

# Bendamustine in Combination With Gemcitabine and Vinorelbine Is an Effective Regimen As Induction Chemotherapy Before Autologous Stem-Cell Transplantation for Relapsed or Refractory Hodgkin Lymphoma: Final Results of a Multicenter Phase II Study

Armando Santoro, Rita Mazza, Alessandro Pulsoni, Alessandro Re, Maurizio Bonfichi, Vittorio Ruggero Zilioli, Flavia Salvi, Francesco Merli, Antonella Anastasia, Stefano Luminari, Giorgia Annechini, Manuel Gotti, Annalisa Peli, Anna Marina Liberati, Nicola Di Renzo, Luca Castagna, Laura Giordano, and Carmelo Carlo-Stella

Armando Santoro, Rita Mazza, Luca Castagna, Laura Giordano, and Carmelo Carlo-Stella, Humanitas Cancer Center; Armando Santoro, Humanitas University, Rozzano; Alessandro Pulsoni and Giorgia Annechini, Sapienza University, Rome; Alessandro Re, Antonella Anastasia, and Annalisa Peli, Spedali Civili, Brescia; Maurizio Bonfichi and Manuel Gotti, Istituto di Ricovero e Cura a Carattere Scientifico (IRCCS) Policlinico San Matteo, Pavia; Vittorio Ruggero Zilioli, Niguarda Ca' Granda Hospital; Carmelo Carlo-Stella, University of Milano, Milan; Flavia Salvi, SS Antonio e Biagio Hospital, Alessandria; Francesco Merli, Arcispedale S. Maria Nuova/IRCCS, Reggio Emilia; Stefano Luminari, University of Modena and Reggio Emilia, Modena; Anna Marina Liberati, A.O. Santa Maria, Terni; and Nicola Di Renzo, Vito Fazzi Hospital, Lecce, Italy.

Published online ahead of print at [www.jco.org](http://www.jco.org) on July 5, 2016.

Support information appears at the end of this article.

A.S. and R.M. contributed equally to this work.

Authors' disclosures of potential conflicts of interest are found in the article online at [www.jco.org](http://www.jco.org). Author contributions are found at the end of this article.

Clinical trial information: NCT01884441, 2010-022169-91 (EudraCT).

Corresponding author: Armando Santoro, MD, Humanitas Cancer Center, Via Manzoni 56, Rozzano (MI), Italy; e-mail: [armando.santoro@cancercenter.humanitas.it](mailto:armando.santoro@cancercenter.humanitas.it).

© 2016 by American Society of Clinical Oncology

0732-183X/16/3427w-3293w/\$20.00

DOI: 10.1200/JCO.2016.66.4466

## ABSTRACT

### Purpose

This multicenter, open-label, phase II study evaluated the combination of bendamustine, gemcitabine, and vinorelbine (BeGEV) as induction therapy before autologous stem-cell transplantation (ASCT) in patients with relapsed or refractory Hodgkin lymphoma (HL).

### Patients and Methods

Patients with HL who were refractory to or had relapsed after one previous chemotherapy line were eligible. The primary end point was complete response (CR) rate after four cycles of therapy. Secondary end points were: overall response rate, stem-cell mobilization activity, and toxicity. Progression-free and overall survival were also evaluated.

### Results

In total, 59 patients were enrolled. After four cycles of therapy, 43 patients (73%) achieved CR, and six (10%) achieved partial response, for an overall response rate of 83%. The most common grade 3 to 4 nonhematologic toxicities included febrile neutropenia (n = 7) and infection (n = 4). Regarding hematologic toxicities, grade 3 to 4 thrombocytopenia and neutropenia were each experienced by eight patients (13.5%). CD34+ cells were successfully harvested in 55 of 57 evaluable patients, and 43 of 49 responding patients underwent ASCT. With a median follow-up of 29 months, the 2-year progression-free and overall survival rates for the total population were 62.2% and 77.6%, respectively. The same figures for patients undergoing autograft were 80.8% and 89.3%, respectively.

### Conclusion

This phase II study demonstrates that BeGEV is an effective salvage regimen able to induce CR in a high proportion of patients with relapsed or refractory HL before ASCT. These data provide a strong rationale for further development of the BeGEV regimen.

*J Clin Oncol* 34:3293-3299. © 2016 by American Society of Clinical Oncology

## INTRODUCTION

First-line chemoradiotherapy yields cure rates approaching 80% in patients with advanced-stage Hodgkin lymphoma (HL).<sup>1,2</sup> Patients who are refractory to or relapse after initial therapy usually have a worse prognosis, and second-line salvage treatment programs are required as early as possible to reduce the risk of treatment failure, avoid unnecessary toxicity, and prolong survival.<sup>3</sup> Two randomized, phase III studies conducted more

than 10 years ago showed an improved failure-free survival rate with high-dose chemotherapy and autologous stem-cell transplantation (ASCT) compared with conventional-dose chemotherapy.<sup>4,5</sup> However, the efficacy of this approach has been challenged by a recent meta-analysis.<sup>3</sup> Therefore, further investigation of the optimal therapeutic strategy in patients with relapsed or refractory HL seems warranted.<sup>6,7</sup>

Achieving complete response (CR) after induction chemotherapy administered before ASCT represents the strongest prognostic factor in

patients receiving second-line salvage chemotherapy.<sup>8</sup> Thus, increasing the rate of CR achieved with induction chemotherapy represents a primary goal in patients with refractory or relapsed HL.

Our group developed the IGEV regimen, consisting of ifosfamide, gemcitabine, and vinorelbine, as pretransplantation salvage chemotherapy.<sup>8</sup> In a study of 91 patients, the overall response rate (ORR) was 81%, with a 54% CR rate and no toxicity concerns.<sup>8</sup> Furthermore, the IGEV regimen demonstrated excellent mobilizing potential of peripheral-blood stem cells.<sup>9</sup>

Bendamustine hydrochloride comprises a 2-chloroethylamine alkylating group and a benzimidazole ring similar to cladribine. Despite its structural similarities to both alkylating agents and purine analogs, the exact mechanism of action of bendamustine is unknown.<sup>10</sup> Retrospective and prospective studies have shown promising activity of bendamustine monotherapy in the treatment of patients with multirelapsed HL who were ineligible ASCT or for whom ASCT had failed, with a remarkable incidence of CR (range, 25% to 35%).<sup>11-15</sup> The use of bendamustine in combination regimens as second-line salvage chemotherapy in patients with relapsed or refractory HL has been proposed to increase the CR rate.<sup>11</sup> Therefore, in this multicenter phase II study, we replaced ifosfamide in the IGEV regimen with bendamustine to evaluate this combination (BeGEV) as induction therapy before ASCT in patients with relapsed or refractory HL.

## PATIENTS AND METHODS

### Patient Eligibility

Consecutive patients with HL age 18 years or older who were refractory to or had relapsed after receiving one previous chemotherapy line were eligible. Refractory disease was defined as disease progression during or within 3 months of doxorubicin-based chemotherapy, and relapsed disease was defined as reappearance of disease after CR lasting 3 months or longer.<sup>16</sup> Other inclusion criteria were as follows: Eastern Cooperative Oncology Group performance status  $\alpha$ 2 or lower, at least one site of measurable nodal disease at baseline of 1.5 cm or larger, absolute neutrophil count of  $1.5 \times 10^9/L$  or greater, platelet count of  $75 \times 10^9/L$  or greater, and negative pregnancy test and agreement on using a method of contraception for women. Patients were excluded if they had received radiation therapy 3 weeks or less before study entry, had evidence of other malignancies or history of malignancy within the 3 years before study entry, had abnormal biochemical tests (creatinine  $\geq 1.5 \times$  ULN, bilirubin  $\geq 1.5 \times$  ULN, or AST/ALT  $\geq 2.5 \times$  ULN or  $\geq 5.0 \times$  ULN if transaminase elevation was due to disease involvement), or had ongoing HIV, hepatitis B virus, or hepatitis C virus infection.

### Setting and Study Design

This was a prospective, open-label, multicenter phase II study. Ten centers from the Fondazione Italiana Linfomi (Italian Lymphoma Foundation), located all over the Italian territory, participated in this study, which started in September 2011 and ended in March 2014. The study was conducted in accordance with the Helsinki Declaration; the ethical committees of the participating centers approved the study protocol. All patients signed an informed consent before inclusion.

### Study Treatment

The BeGEV regimen consisted of gemcitabine 800 mg/m<sup>2</sup> on days 1 and 4, vinorelbine 20 mg/m<sup>2</sup> on day 1, and bendamustine 90 mg/m<sup>2</sup> on days 2 and 3. Prednisolone 100 mg per day was administered on days 1 to 4.

Patients received four cycles of the BeGEV regimen administered every 21 days. Growth factor support with granulocyte colony-stimulating factor (G-CSF) was administered at each cycle. Patients received *Pneumocystis pneumonia* prophylaxis and antiemetics in accordance with institutional guidelines. Treatment was interrupted in case of disease progression, unacceptable toxicity, or withdrawal of consent. Patients who achieved CR or partial response (PR) after completion of the planned four cycles received myeloablative therapy with BEAM (carmustine, etoposide, cytarabine, and melphalan; n = 20) or FEAM (fotemustine, etoposide, cytarabine, and melphalan; n = 23) followed by reinfusion of mobilized CD34+ circulating stem cells. BEAM consisted of carmustine 300 mg/m<sup>2</sup> on day -6, etoposide 200 mg/m<sup>2</sup> on days -5 to -2, cytarabine 400 mg/m<sup>2</sup> intravenously (IV) on days -5 to -2, and melphalan 140 mg/m<sup>2</sup> IV on day -1. FEAM consisted of fotemustine 150 mg/m<sup>2</sup> IV on days -7 and -6, etoposide 200 mg/m<sup>2</sup> on days -5 to -2, cytarabine 400 mg/m<sup>2</sup> IV on days -5 to -2, and melphalan 140 mg/m<sup>2</sup> IV, on day -1. Both myeloablative regimens were followed by the reinfusion of at least  $2 \times 10^6$  per kilogram of body weight of CD34+ cells on day 0 and G-CSF 5  $\mu$ g/kg subcutaneously per day from day +5 until achievement of WBC of 3,000/ $\mu$ L or greater for 3 days. Patients with residual lymphoma ( $> 1.5$  cm on computed tomography [CT] scan) at 100 days after ASCT received 30-Gy involved-field radiotherapy.

### Response Criteria

Responses were assessed according to the International Working Group response criteria.<sup>17</sup> CT and [<sup>18</sup>F]fluorodeoxyglucose-positron emission tomography scans were performed before and after the fourth BeGEV cycle. According to the 2007 criteria of Cheson et al,<sup>17</sup> a metabolic response was scored as CR when positron emission tomography scan results were negative on the basis of visual analysis, independent from the presence of residual masses on CT scan.

### CD34+ Cell Mobilization and Collection

To elicit CD34+ cell mobilization, G-CSF (10  $\mu$ g/kg body weight) was administered once per day beginning on day 7 and continued until completion of the target cell harvesting ( $3 \times 10^6$  CD34+ cells/kg). Collection of CD34+ cells was usually performed after the first or second cycle, when circulating CD34+ cells were 10/ $\mu$ L or greater using a COBE Spectra separator (COBE, Lakewood, CO).

### Data Analysis

The primary end point was CR proportion after four cycles of therapy. Secondary end points were: ORR (ie, CR plus PR), stem-cell mobilization activity, and toxicity (graded according to Common Terminology Criteria for Adverse Events [version 4.0]). Progression-free (PFS; calculated from first BeGEV administration to disease progression, relapse, or death, whichever occurred first, or until last disease assessment for patient alive and without progressive disease) and overall survival (OS; calculated from first BeGEV administration to death or last contact) were also evaluated. The sample size was estimated using a Fleming's single-stage phase II design. A CR proportion of 50% or lower was considered to be clinically unworthy, whereas a proportion of 65% or higher would be assumed to be of potential interest. The drug would be recommended for further study, with a 10% rejection error (one sided) and a power of 85%, if 35 or more of the 59 total patients were to achieve CR. Data were analyzed by descriptive statistics. Differences between groups were estimated with the  $\chi^2$  or Fisher's exact test as appropriate. Kaplan-Meier survival curves were estimated, and the log-rank test was used to assess survival differences. The univariable Cox proportional hazards regression model was used to calculate hazard ratios (HRs) with 95% CIs. Statistical significance was set at *P* less than .05 (two sided) for all secondary evaluations. Statistical analysis was performed using STATA software (version 13; STATA, College Station, TX).

RESULTS

**Patient Characteristics**

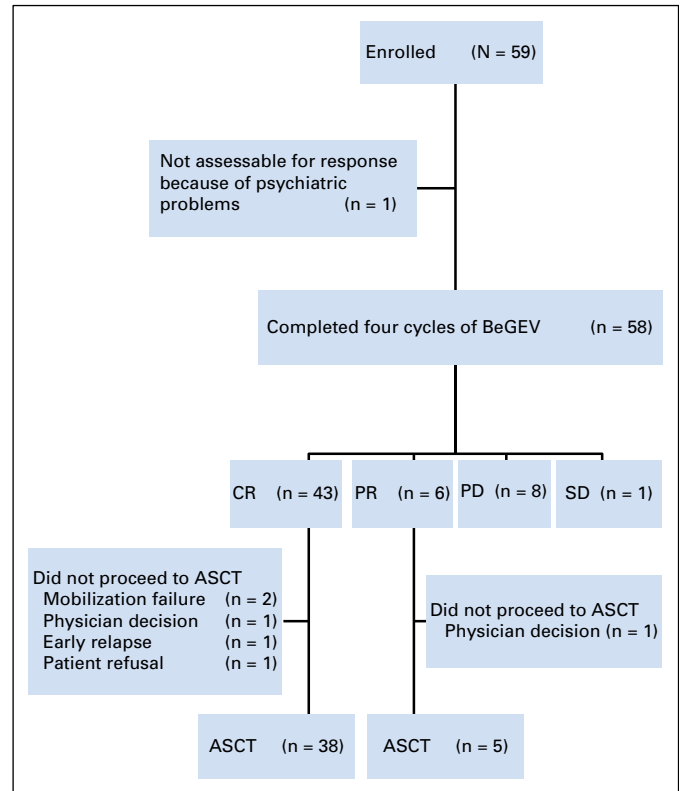
Between September 2011 and March 2014, 59 patients were enrolled (Table 1; Fig 1). The median age was 33 years (range, 18 to 68 years), and 31 patients (53%) were men. Fifty-six patients (95%) had received ABVD (doxorubicin, bleomycin, vinblastine, and dacarbazine) as first-line therapy, and three (5%) had received BEACOPP (bleomycin, etoposide, doxorubicin, cyclophosphamide, vincristine, procarbazine, and prednisolone). Overall, 27 patients (46%) were refractory to and 32 (54%) had experienced relapse after first-line treatment (22 within and 10 after 12 months). Of the 59 patients, one was not evaluable for response. This patient discontinued the study after two cycles of BeGEV because of psychiatric and behavioral problems while he was in clinical response; he was subsequently monitored and died as a result of disease progression.

**Treatment Response and ASCT**

By intention to treat, after four cycles of therapy, 43 patients (73%) achieved CR, and six (10%) achieved PR, for an ORR of 83% (49 of 59; Fig 1). One patient (2%) had stable disease, eight patients (14%) experienced disease progression, and one patient (2%) was not evaluable for response (Table 2). In univariable analysis, the only factor associated with a different probability of achieving CR was disease status at study entry, with CR being achieved by 84% of patients with relapsed disease and 59% of those with refractory disease ( $P = .031$ ; Table 2). Of the 49 responding patients, 43 (73% by intention to treat) proceeded to ASCT (38 of 43 achieving CR and five of six achieving PR); the remaining six patients did not proceed to ASCT because of mobilization failure

Characteristic	No.	%
Age, years		
Median	33	
Range	18-68	
Sex		
Male	31	53
Female	28	48
Response to primary therapy		
Relapsed disease	32	54
CR < 1 year	22	37
CR ≥ 1 year	10	17
Primary refractory	27	46
Extranodal sites of disease		
Yes	24	41
No	35	59
Prior radiotherapy		
Yes	9	15
No	50	85
Prior chemotherapy		
ABVD	56	95
BEACOPP	3	5

NOTE. Sums of percentages may not be equal to 100% as a result of rounding. Abbreviations: ABVD, doxorubicin, bleomycin, vinblastine, and dacarbazine; BEACOPP, bleomycin, etoposide, doxorubicin, cyclophosphamide, vincristine, procarbazine, and prednisolone; CR, complete response.



**Fig 1.** Diagram showing the flow of participants. ASCT, autologous stem-cell transplantation; BeGEV, bendamustine, gemcitabine, and vinorelbine; CR, complete remission; PD, progressive disease; PR, partial remission; SD; stable disease.

(n = 2), physician decision (n = 2), early relapse (n = 1), and patient refusal (n = 1).

**Survival Analysis**

PFS and OS Kaplan-Meier curves for all patients are shown in Figs 2A and 2B. With a median follow-up of 29.1 months (range, 3.4 to 49.1 months), the 2-year PFS and OS rates were 62.2% and 77.6%, respectively. No differences were observed when main prognostic factors were analyzed. In particular, response to first-line chemotherapy did not significantly influence prognosis, with a 2-year PFS of 62.5% versus 62.3% ( $P = .769$ ) and 2-year OS of 79.7% versus 75.9% ( $P = .645$ ) for patients with relapsed and refractory disease, respectively (Figs 2C and 2D). The 2-year PFS and OS rates for patients receiving an autograft during CR or PR were 80.8% and 89.3%, respectively (Figs 2E and 2F).

**CD34+ Cell Mobilization and Harvesting**

Fifty-seven of 59 patients were evaluable for CD34+ cell mobilization. Two patients were excluded: one because of medical decision and one for stem-cell collection before study inclusion. After BeGEV, the median peak value of CD34+ cells (89 cells/ $\mu$ L; range, 1 to 763 cells/ $\mu$ L) was recorded on day 12. Mobilization failure was detected in two (3.5%) of 57 patients; CD34+ cells were successfully harvested in 55 (96.5%) of 57 evaluable patients. Forty-two patients (76%) required one leukapheresis to harvest the planned target CD34+ cell yield ( $3 \times 10^6$  CD34+ cells/kg body

**Table 2.** Clinical Responses to BeGEV Regimen According to ITT and Disease Status at Entry

Parameter	No. of Patients	CR		PR		SD		PD		NE	
		No.	%	No.	%	No.	%	No.	%	No.	%
Response by ITT	59	43	73	6	10	1	2	8	14	1	2
Disease status at study entry											
Relapsed	32	27	84*	3	9	1	3	0	0	1	3
Refractory	27	16	59*	3	11	0	0	8	30	0	0

NOTE. One patient discontinued the study after two cycles of BeGEV because of psychiatric and behavioral problems while he was clinically responding. Two patients were evaluated after the third cycle (but not the fourth), but they continued the study according to protocol. Sums of percentages may not be equal to 100% as a result of rounding.

Abbreviations: BeGEV, bendamustine, gemcitabine, and vinorelbine; CR, complete response; ITT, intention to treat; NE, not evaluable; PD, progressive disease; PR, partial response; SD, stable disease.

\* $P = .031$  (CR  $\nu$  other).

weight), whereas 13 patients (24%) required two leukaphereses. The median total yield of CD34+ cells per kilogram of body weight was  $8.8 \times 10^6$  CD34+ cells (range, 3 to  $56 \times 10^6$  cells). After ASCT, engraftment of neutrophils and platelets was recorded on median day 11 (range, day 9 to 21) and median day 12 (range, day 9 to 26), respectively.

### Toxicity

Adverse events are listed in Table 3. The most common nonhematologic toxicities included grade 1 to 2 nausea, infection, and febrile neutropenia as well as grade 3 to 4 febrile neutropenia (n = 7) and infection (n = 4). Among hematologic toxicities, grade 3 to 4 thrombocytopenia and neutropenia were each experienced by eight patients. Of 223 evaluated cycles, 69 cycles (31%) were delayed because of hematologic toxicity (n = 4), nonhematologic toxicity (n = 5), infection (n = 6), patient-related logistic reasons (n = 49), and other reasons (n = 5). Dose reductions were recorded in 19 cycles (9%) because of poor performance status (n = 1), neutropenia (n = 1), vertigo (n = 1), body weight changes (n = 12), and unknown reasons (n = 4). RBC transfusions were required by 14% (n = 8) and platelet transfusions by 5% of patients (n = 3), respectively. Overall, the median dose-intensity per cycle was more than 98%.

## DISCUSSION

This is the first phase II trial to our knowledge reporting efficacy and toxicity data of a novel bendamustine-containing regimen, namely the BeGEV regimen, administered in an outpatient setting to ASCT-eligible patients with HL who were refractory to or experienced relapse after first-line chemotherapy. Notwithstanding the poor prognostic features of study patients, including primary chemotherapy refractoriness (47%), CR duration of less than 1 year (37%), and extranodal disease (41%), the analysis of clinical response clearly shows the remarkable efficacy of this bendamustine-containing regimen as well as its favorable toxicity profile. Notably, the BeGEV regimen induced a 73% CR proportion, which was far higher than the threshold applied to define clinical interest (65%). This CR rate is substantially higher than that reported for the IGEV regimen (73%  $\nu$  54%)<sup>8</sup> and has never to our knowledge been observed using a variety of second-line salvage

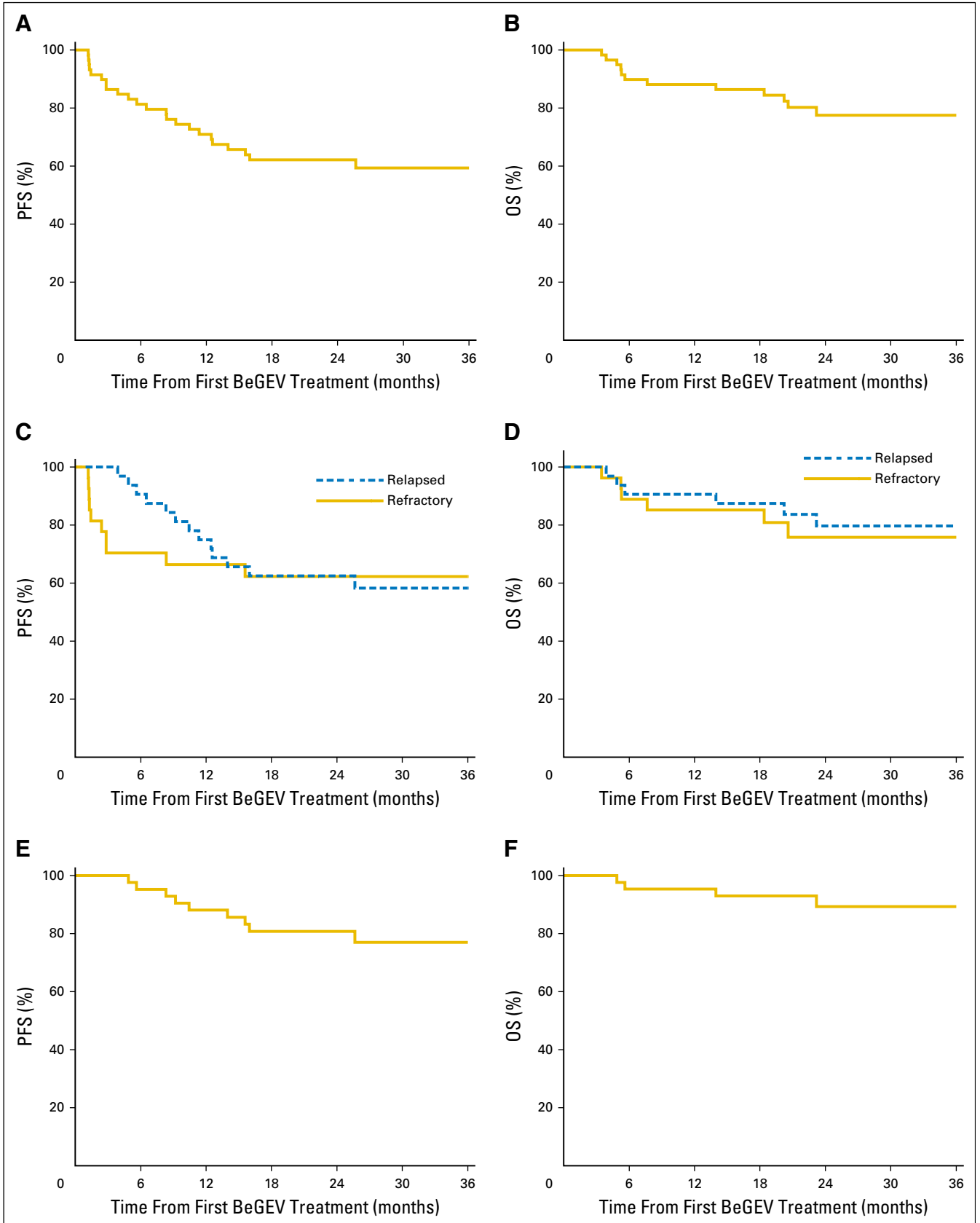
regimens (eg, ICE [ifosfamide, carboplatin, and etoposide],<sup>18</sup> DHAP [dexamethasone, cisplatin, and cytarabine],<sup>19</sup> or GDP [gemcitabine, dexamethasone, and cisplatin]<sup>20</sup>) before ASCT. Additionally, 88% of the patients who responded to the BeGEV regimen were able to proceed to ASCT, showing 2-year PFS and OS rates of 81% and 89%, respectively.

Despite the sample size of our study, which did not allow performance of a multivariable analysis, it seems that completion of the salvage program (BeGEV plus ASCT) overcame the negative prognostic impact of disease status before BeGEV, as shown by lack of significant differences in terms of 2-year PFS and OS in patients with relapsed or refractory disease. However, future studies with larger series will be required to address this issue definitively.

The BeGEV regimen had excellent stem-cell mobilization activity, with only two mobilization failures detected in more than 57 mobilized patients. All patients experienced full hematopoietic engraftment, strongly supporting that BeGEV-mobilized CD34+ cells are fully functional. Thus, these results not only clearly demonstrate that the BeGEV regimen has potent stem-cell mobilizing activity, but also demonstrate that bendamustine does not have any detrimental effect on stem-cell mobilization or stem-cell engraftment.

BeGEV showed a favorable toxicity profile, characterized by limited occurrence of grade 3 to 4 nonhematologic and hematologic toxicities, similar to that observed with the IGEV regimen, without hemorrhagic cystitis. Even more interestingly, BeGEV was administered as an outpatient regimen, further supporting an advantage over other regimens, including IGEV,<sup>8</sup> DHAP,<sup>19</sup> and ICE<sup>18</sup> regimens, which require hydration and hospitalization.

Recently, a variety of novel agents have become available for transplantation-eligible patients with HL as well as patients with relapsed or refractory HL,<sup>21</sup> thus raising the question of whether to incorporate novel agents into conventional chemotherapy regimens or compare these two treatment modalities to optimize treatment strategies for relapsed and refractory HL. Unprecedented efficacy data have been reported for novel agents such as brentuximab vedotin,<sup>22-26</sup> nivolumab,<sup>27-29</sup> and pembrolizumab,<sup>30,31</sup> which target tumor or microenvironmental cells through distinct mechanisms of action. Novel agents have mainly been explored in the setting of ASCT failure, and their use has resulted in CR rates that are far below those observed with the BeGEV regimen in the pretransplantation setting; in contrast, limited data are available on the use of new agents in the pretransplantation



**Fig 2.** Kaplan-Meier curves for (A) progression-free survival (PFS) and (B) overall survival (OS) of the overall population, (C) PFS and (D) OS of patients with relapsed or refractory disease before BeGEV (bendamustine, gemcitabine, and vinorelbine), and (E) PFS and (F) OS of patients who achieved complete or partial response and underwent autologous stem-cell transplantation.



**Table 3.** Adverse Events

Toxicity	No. of Patients (%)	
	Grade 1 and 2	Grade 3 and 4
Anemia	3 (5)	2 (3)
Neutropenia	1 (2)	8 (14)
Thrombocytopenia	0 (0)	8 (14)
Febrile neutropenia	5 (8)	7 (12)
Infection	9 (15)	4 (7)
Nausea	10 (17)	4 (7)
Fatigue	5 (8)	0 (0)
Skin rash	6 (10)	0 (0)
AST/ALT increase	7 (12)	2 (3)

setting.<sup>32-34</sup> Nonetheless, such cross-trial comparisons do not permit firm conclusions to be made regarding the relative efficacy of brentuximab vedotin or nivolumab as compared with the BeGEV regimen.

In conclusion, the results of this multicenter phase II study demonstrate that BeGEV is an effective salvage regimen able to induce CR in a high proportion of patients with relapsed or refractory HL before ASCT. These findings provide a strong rationale for further development of the BeGEV regimen. Because the number of novel agents that may be added in the pre-transplantation therapy setting is growing, direct comparisons of

combinations incorporating novel agents with BeGEV and other regimens will be necessary to identify the best salvage strategy for relapsed and refractory HL.

#### AUTHORS' DISCLOSURES OF POTENTIAL CONFLICTS OF INTEREST

Disclosures provided by the authors are available with this article at [www.jco.org](http://www.jco.org).

#### AUTHOR CONTRIBUTIONS

**Conception and design:** Armando Santoro, Rita Mazza, Carmelo Carlo-Stella

**Provision of study materials or patients:** Flavia Salvi

**Collection and assembly of data:** Armando Santoro, Rita Mazza, Alessandro Pulsoni, Alessandro Re, Maurizio Bonfichi, Vittorio Ruggero Zilioli, Flavia Salvi, Francesco Merli, Antonella Anastasia, Stefano Luminari, Giorgia Annechini, Manuel Gotti, Annalisa Peli, Anna Marina Liberati, Nicola Di Renzo, Luca Castagna, Carmelo Carlo-Stella

**Data analysis and interpretation:** Armando Santoro, Laura Giordano, Carmelo Carlo-Stella

**Manuscript writing:** All authors

**Final approval of manuscript:** All authors

#### REFERENCES

- Santoro A, Bonadonna G, Valagussa P, et al: Long-term results of combined chemotherapy-radiotherapy approach in Hodgkin's disease: Superiority of ABVD plus radiotherapy versus MOPP plus radiotherapy. *J Clin Oncol* 5:27-37, 1987
- Canellos GP, Rosenberg SA, Friedberg JW, et al: Treatment of Hodgkin lymphoma: A 50-year perspective. *J Clin Oncol* 32:163-168, 2014
- Rancea M, von Tresckow B, Monsef I, et al: High-dose chemotherapy followed by autologous stem cell transplantation for patients with relapsed or refractory Hodgkin lymphoma: A systematic review with meta-analysis. *Crit Rev Oncol Hematol* 92:1-10, 2014
- Linch DC, Winfield D, Goldstone AH, et al: Dose intensification with autologous bone-marrow transplantation in relapsed and resistant Hodgkin's disease: Results of a BNLI randomised trial. *Lancet* 341:1051-1054, 1993
- Schmitz N, Pfistner B, Sextro M, et al: Aggressive conventional chemotherapy compared with high-dose chemotherapy with autologous haemopoietic stem-cell transplantation for relapsed chemosensitive Hodgkin's disease: A randomised trial. *Lancet* 359:2065-2071, 2002
- Castagna L, Carlo-Stella C, Mazza R, et al: Current role of autologous and allogeneic stem cell transplantation for relapsed and refractory Hodgkin lymphoma. *Mediterr J Hematol Infect Dis* 7:e2015015, 2015
- Castagna L, Crocchiolo R, Giordano L, et al: High-dose melphalan with autologous stem cell support in refractory Hodgkin lymphoma patients as a bridge to second transplant. *Bone Marrow Transplant* 50:499-504, 2015
- Santoro A, Magagnoli M, Spina M, et al: Ifosfamide, gemcitabine, and vinorelbine: A new induction regimen for refractory and relapsed Hodgkin's lymphoma. *Haematologica* 92:35-41, 2007
- Magagnoli M, Spina M, Balzarotti M, et al: IGEV regimen and a fixed dose of lenograstim: An effective mobilization regimen in pretreated Hodgkin's lymphoma patients. *Bone Marrow Transplant* 40:1019-1025, 2007
- van der Jagt R: Bendamustine for indolent non-Hodgkin lymphoma in the front-line or relapsed setting: A review of pharmacokinetics and clinical trial outcomes. *Expert Rev Hematol* 6:525-537, 2013
- Moskowitz AJ, Hamlin PA Jr, Perales MA, et al: Phase II study of bendamustine in relapsed and refractory Hodgkin lymphoma. *J Clin Oncol* 31:456-460, 2013
- Corazzelli G, Angrilli F, D'Arco A, et al: Efficacy and safety of bendamustine for the treatment of patients with recurring Hodgkin lymphoma. *Br J Haematol* 160:207-215, 2013
- Zinzani PL, Derenzini E, Pellegrini C, et al: Bendamustine efficacy in Hodgkin lymphoma patients relapsed/refractory to brentuximab vedotin. *Br J Haematol* 163:681-683, 2013
- Ghesquières H, Stamatoullas A, Casasnovas O, et al: Clinical experience of bendamustine in relapsed or refractory Hodgkin lymphoma: A retrospective analysis of the French compassionate use program in 28 patients. *Leuk Lymphoma* 54:2399-2404, 2013
- Anastasia A, Carlo-Stella C, Corradini P, et al: Bendamustine for Hodgkin lymphoma patients failing autologous or autologous and allogeneic stem cell transplantation: A retrospective study of the Fondazione Italiana Linfomi. *Br J Haematol* 166:140-142, 2014
- Josting A, Rudolph C, Mapara M, et al: Cologne high-dose sequential chemotherapy in relapsed and refractory Hodgkin lymphoma: Results of a large multicenter study of the German Hodgkin Lymphoma Study Group (GHSG). *Ann Oncol* 16:116-123, 2005 [Erratum: *Ann Oncol* 19:1515, 2008]
- Cheson BD, Pfistner B, Juweid ME, et al: Revised response criteria for malignant lymphoma. *J Clin Oncol* 25:579-586, 2007
- Moskowitz CH, Nimer SD, Zelenetz AD, et al: A 2-step comprehensive high-dose chemoradiotherapy second-line program for relapsed and refractory Hodgkin disease: Analysis by intent to treat and development of a prognostic model. *Blood* 97:616-623, 2001
- Josting A, Müller H, Borchmann P, et al: Dose intensity of chemotherapy in patients with relapsed Hodgkin's lymphoma. *J Clin Oncol* 28:5074-5080, 2010
- Kuruvilla J, Nagy T, Pintilie M, et al: Similar response rates and superior early progression-free survival with gemcitabine, dexamethasone, and cisplatin salvage therapy compared with carmustine, etoposide, cytarabine, and melphalan salvage therapy prior to autologous stem cell transplantation for recurrent or refractory Hodgkin lymphoma. *Cancer* 106:353-360, 2006
- Carbone A, Gloghini A, Castagna L, et al: Primary refractory and early-relapsed Hodgkin's lymphoma: Strategies for therapeutic targeting based on the tumour microenvironment. *J Pathol* 237:4-13, 2015
- Younes A, Gopal AK, Smith SE, et al: Results of a pivotal phase II study of brentuximab vedotin for patients with relapsed or refractory Hodgkin's lymphoma. *J Clin Oncol* 30:2183-2189, 2012
- Younes A, Bartlett NL, Leonard JP, et al: Brentuximab vedotin (SGN-35) for relapsed CD30-positive lymphomas. *N Engl J Med* 363:1812-1821, 2010

24. Gopal AK, Ramchandren R, O'Connor OA, et al: Safety and efficacy of brentuximab vedotin for Hodgkin lymphoma recurring after allogeneic stem cell transplantation. *Blood* 120:560-568, 2012

25. Carlo-Stella C, Ricci F, Dalto S, et al: Brentuximab vedotin in patients with Hodgkin lymphoma and a failed allogeneic stem cell transplantation: Results from a named patient program at four Italian centers. *Oncologist* 20:323-328, 2015

26. Zinzani PL, Viviani S, Anastasia A, et al: Brentuximab vedotin in relapsed/refractory Hodgkin's lymphoma: The Italian experience and results of its use in daily clinical practice outside clinical trials. *Haematologica* 98:1232-1236, 2013

27. Ansell SM, Lesokhin AM, Borrello I, et al: PD-1 blockade with nivolumab in relapsed or refractory Hodgkin's lymphoma. *N Engl J Med* 372:311-319, 2015

28. Hawkes EA, Grigg A, Chong G: Programmed cell death-1 inhibition in lymphoma. *Lancet Oncol* 16: e234-e245, 2015

29. Armand P: Immune checkpoint blockade in hematologic malignancies. *Blood* 125:3393-3400, 2015

30. Moskowitz CH, Ribrag V, Michot J-M, et al: PD-1 blockade with the monoclonal antibody pembrolizumab (MK-3475) in patients with classical Hodgkin lymphoma after brentuximab vedotin failure: Preliminary results from a phase 1b study (KEYNOTE-013). *Blood* 124, 2014 (abstr 290)

31. Armand P, Shipp MA, Ribrag V, et al: PD-1 blockade with pembrolizumab in patients with classical Hodgkin lymphoma after brentuximab vedotin failure: Safety, efficacy, and biomarker assessment. *Blood* 126, 2015 (abstr 584)

32. Garcia-Sanz R, Sureda A, Alonso-Alvarez S, et al: Evaluation of the regimen brentuximab vedotin

plus ESHAP (BRESHAP) in refractory or relapsed Hodgkin lymphoma patients: Preliminary results of a phase I-II trial from the Spanish Group of Lymphoma and Bone Marrow Transplantation (GELTAMO). *Blood* 126, 2015 (abstr 582)

33. LaCasce AS, Bociek G, Sawas A, et al: Brentuximab vedotin plus bendamustine: A highly active salvage treatment regimen for patients with relapsed or refractory Hodgkin lymphoma. *Blood* 126, 2015 (abstr 3982)

34. Sawas A, Connors JM, Kuruvilla JG, et al: The combination of brentuximab vedotin (Bv) and bendamustine (B) demonstrates marked activity in heavily treated patients with relapsed or refractory Hodgkin lymphoma (HL) and anaplastic large T-cell lymphoma (ALCL): Results of an international multi center phase I/II experience. *Blood* 126, 2015 (abstr 586)

### Support

Supported in part by a grant from Mundipharma Pharmaceuticals, which also supplied bendamustine and funded editorial assistance. Mundipharma Pharmaceuticals had no input in the analysis or interpretation of the study data.

## ASCO's Journal of Global Oncology

The American Society of Clinical Oncology and David Kerr, MD, DSc, founding Editor-in-Chief of the Society's *Journal of Global Oncology*, invite you to submit your next article to *JGO*.

This online-only, open access journal fills a growing need for high-quality literature on the array of challenges that health care professionals in resource-limited settings face in caring for patients with cancer and in conducting research. Topics covered include:

- Cancer treatment and diagnosis
- Palliative and supportive care
- Prevention
- Barriers to care
- Epidemiology
- Health policy

Article types that will be considered include original reports, reviews, commentaries, correspondence, special articles, case reports, and editorials.

Submit your article today at [submitjgo.ascopubs.org](http://submitjgo.ascopubs.org).



American Society of Clinical Oncology

## AUTHORS' DISCLOSURES OF POTENTIAL CONFLICTS OF INTEREST

**Bendamustine in Combination With Gemcitabine and Vinorelbine Is an Effective Regimen As Induction Chemotherapy Before Autologous Stem-Cell Transplantation for Relapsed or Refractory Hodgkin Lymphoma: Final Results of a Multicenter Phase II Study**

The following represents disclosure information provided by authors of this manuscript. All relationships are considered compensated. Relationships are self-held unless noted. I = Immediate Family Member, Inst = My Institution. Relationships may not relate to the subject matter of this manuscript. For more information about ASCO's conflict of interest policy, please refer to [www.asco.org/rwc](http://www.asco.org/rwc) or [jco.ascopubs.org/site/ifc](http://jco.ascopubs.org/site/ifc).

**Armando Santoro**

**Consulting or Advisory Role:** Takeda Pharmaceuticals, Eli Lilly, Amgen, Bayer HealthCare Pharmaceuticals, ArQule

**Rita Mazza**

No relationship to disclose

**Alessandro Pulsoni**

No relationship to disclose

**Alessandro Re**

No relationship to disclose

**Maurizio Bonfichi**

**Travel, Accommodations, Expenses:** Takeda Pharmaceuticals, Gilead Sciences

**Vittorio Ruggero Zilioli**

**Consulting or Advisory Role:** Italfarmaco

**Flavia Salvi**

No relationship to disclose

**Francesco Merli**

**Consulting or Advisory Role:** Roche, Celgene, Mundipharma Pharmaceuticals, TEVA Pharmaceuticals Industries

**Antonella Anastasia**

No relationship to disclose

**Stefano Luminari**

**Honoraria:** Pfizer

**Consulting or Advisory Role:** Roche, Celgene, TEVA Pharmaceuticals Industries

**Speakers' Bureau:** Gilead Sciences

**Travel, Accommodations, Expenses:** Mundipharma Pharmaceuticals, Celgene, Takeda Pharmaceuticals

**Giorgia Annechini**

No relationship to disclose

**Manuel Gotti**

No relationship to disclose

**Annalisa Peli**

No relationship to disclose

**Anna Marina Liberati**

No relationship to disclose

**Nicola Di Renzo**

No relationship to disclose

**Luca Castagna**

No relationship to disclose

**Laura Giordano**

No relationship to disclose

**Carmelo Carlo-Stella**

**Consulting or Advisory Role:** Boehringer Ingelheim

**Research Funding:** Rhizen Pharmaceuticals (Inst)

**Travel, Accommodations, Expenses:** Takeda Pharmaceuticals



*Acknowledgment*

Presented in part at the 57th Annual Meeting of the American Society of Hematology, Orlando, FL, December 5-8, 2015. We thank the patients who participated in this study and their families, as well as investigators and staff at clinical sites. Editorial assistance for the preparation of this manuscript was provided by Luca Giacomelli, on behalf of Content Ed Net; this assistance was funded by Mundipharma Pharmaceuticals.