

A Comparative Evaluation of Wave Shaping Methods for AC-DC Power Electronics Converter

Prof. N. D. Mehta

Assistant Professor

Vishwakarma Government Engineering College, Chandkheda
Ahemadabad - India
ndmehta@vgecg.ac.in

Dr. A. M. Haque

Assistant Professor

Vishwakarma Government Engineering College, Chandkheda
Ahemadabad - India
amhaque@vgecg.ac.in

Abstract— Power Electronics is defined as branch of science, engineering and technology which deals with Power Electronics Modulators (PEM) in which efficient conversion, conditioning, processing, controlling and modulating the flow of large electric power using Solid State Power Semiconductor Device (SSPSD) in order to supply high quality power to the load which causes minimum pollution of physical characteristics of electric power with regulating stability and response characteristics of the closed loop system and its application. The comparative study of Passive and Active Wave Shaping (AWS) filter based on Current-Source Fed Switch Mode Rectifier (CSFSMR) converter supplied from single-phase AC supply is carried out in this paper in which two circuit are designed and implemented in MATLAB Simulink. Usually a boost converter is working as Active Harmonic Filter to reduce the harmonics at the main supply by controlling the duty cycle of the filter while Passive wave shaping filter reduce the harmonics at the supply in a simple way. Depending on rating, schematic and control complexities, control performance and cost, there are many possible power factor correction approaches. The suited and cost effective one can be chosen according to the desired performance for specific application.

Keywords- AC-DC Converter, Current Wave Shaping, Power Factor Correction, Harmonics, Switch Mode Rectifier, Power Quality

I. INTRODUCTION

Power Electronics Design is a creative decision making process for identifying needs of Power Electronics Modulators (PEM) in which the basic science, mathematics and engineering science are applied to devising a solution that may be product, a technique, a structure, a project, a method or many other things depending on the problem to fill those needs and use of resource optimally to meet a stated objectives.

Most of the more important international standards define Power Quality (PQ) as a set of electrical boundaries of electric supply provide under normal operating condition that allows equipment to function in its intended manner without significant loss of its performance in ratings, class, efficiency and life expectancy that do not disrupt or disturb consumer's process. Performance degradation results when the electrical power applied to equipment is deficient. [1]

A Power Electronics equipment providing dynamic and adjustable solution to PQ problem to decrease the severity of harmonic pollution in the network is called Active Power Filter (APF) or Power Line Conditioners (PLC). [2]

The PLCs are able to compensate voltage & current harmonic, reactive power, regulate terminal voltage, supply flickers and improve voltage balance in 3- Φ system.[3] Because of the following reason any PEC requires HFSMR in AC- DC Conversion:

1. The proliferation of microelectronics processes in a wide range of equipment have increased the vulnerability of such equipment to PQ problem.
2. PQ problems includes a variety of electrical disturbance which may originate in a several ways and have different effects on various kinds of sensitive loads.
3. PQ problems were considered minor variation in power quality usually unnoticed in the operation of conventional equipment, may bring whole setup to standstill.
4. The proliferation of Non Linear Load (NLL) with large rated power has increased the contamination level in voltage and current waveforms, forcing to improve compensation characteristics required to satisfy more and more stringent harmonic standards.[4]

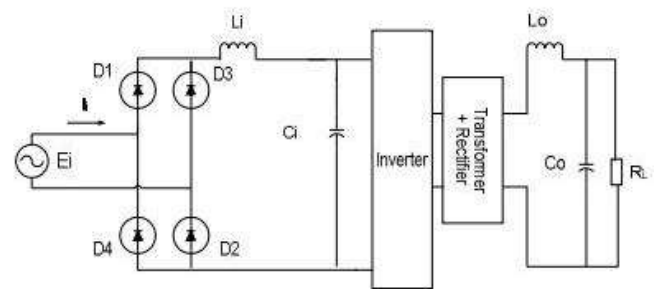


Fig.1 VSF SMR Converter

As a result of this vulnerability, increasing number of industrial and commercial facilities are trying to protect themselves by investing more sophisticated equipment to improve PQ. The main design objective in any High-Frequency SMR converter is to minimize the size and weight while maintaining acceptable component stresses. An increase in the switching frequency is the most basic technique used for size reduction because the volume of the converter depends mainly on the size of the magnetic components and associated filter capacitors. Further reduction in the size of the converter can be obtained by operating the converter with continuous input and output currents and by optimizing the usage of power semiconductor switches,[5], [6].

II. CLASSIFICATION OF SMR

The SMRs possess many categories in circuit topology and switching control approaches. A single-phase boost-type SMR is shown in Fig. 2(a), and the typical waveforms of ac current using low-frequency (LF) and high-frequency (HF) switching are sketched in Figs. 2(b) and 2(c). The features of HF-SMR comparing to LF-SMR are: (i) more complicated in control; (ii) high control performances in line drawn current, power factor and output voltage; (iii) lower efficiency. [7]

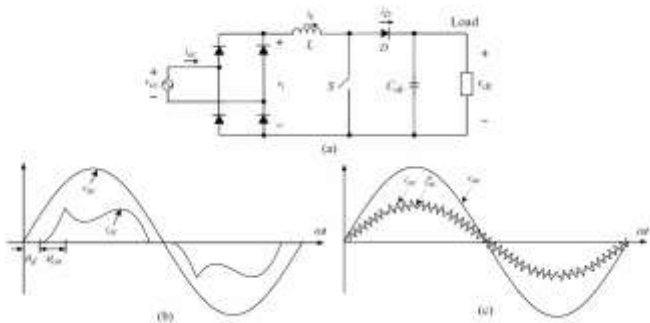


Fig. 2. Boost-type SMR: (a) circuit; (b) sketched key waveforms for low-frequency switching; (c) sketched waveforms for high-frequency switching

Basically, a SMR is formed by inserting a suited AC/DC converter between diode rectifier and capacitive output filter, under well-regulated DC output voltage, the desired AC input line drawn power quality can be achieved. The existing SMRs can be categorized as:

1. Classification based on Schematics

a. *Single-phase or three-phase*: each category still possesses a lot of types of SMR schematics. The three-phase SMR will be a natural choice for larger power plants.

b. *Non-isolated or isolated*: although the former SMR is simpler and more compact, the latter one should be used if the galvanic isolation from mains is required. See for example, the fly back SMR is gradually employed in communication distributed power architecture as a single-stage SMR front-end, or called silver box, to establish -48V DC bus voltage.

c. *Voltage buck, boost or buck/boost*: depending on the input-output relative voltage levels, suited type of SMR and its control scheme should be chosen. Basically, the boost type

SMR possesses the best current control ability subject to having high DC output voltage level.

d. *Single-stage or multi-stage*: generally speaking, the stage number should be kept as small as possible for achieving higher efficiency and system compactness. Hence, single-stage SMR is preferable if possible.

e. *One-quadrant or multi-quadrant*: multiple quadrant SMR may possess reverse power flow from DC side to AC source, such as the regenerative braking of a SMR-fed AC motor drive can be performed by sending braking energy back to the utility grid.

f. *Hard-switching or soft-switching*: Similarly, suited soft switching technique can also be applied to reduce the switching loss, switching stress and EMI of a SMR.

2. Classification based on Control Methods:

a. *Low-frequency control*: only v-loop is needed and only one switching per half AC cycle is applied. It is simple but has limited power quality characteristics.

b. *High-frequency control- voltage-follower control*: without current control loop, only some specific SMRs operating in DCM possess this feature, see for example, buck-boost SMR and fly back SMR.

c. *High-frequency control- standard control*: it belongs to multiplier-based current-mode control approach with both v- and i- control loops.

A growing number of current wave shaping method applied to single phase rectifier are now available including active, passive and hybrid methods [8]. Among the proposed AWS methods, the CSF method as in [9] is superior to the others in reducing the input PF. Also Passive Wave Shaping Method as in [10], [11] proposed by the author to reduced THD_i and increase PF. This paper presents a comparative evaluation of two previous method.

III. HIGH FREQUENCY VOLTAGE SOURCE FED SWITCHED MODE RECTIFIER

PEM typically use a Front End Single Phase Diode Rectifier (FESPDR) feeding the respective DC bus capacitors through a very low inductance path. This approach has many disadvantage including:

1. Higher input Current harmonic components.
2. Lower rectifier efficiency because of the large rms value of the input current.
3. Input ac mains voltage distortion because of the associated higher peak currents.

In this section the VSFSMR converter is designed and analyzed under steady-state condition. The converter is analyzed under the following assumptions:

1. All switching devices are ideal and the forward drop and reverse leakage currents of the diode are negligible.
2. The filter components are lossless;
3. The high frequency transformer turns ration is 1:1.
4. The filter capacitor C is assumed to be sufficiently large so that the DC bus voltage is practically ripple free.
5. The ac source is considered is ideal.

6. The load is modeled as a variable resistance since the effect of high frequency ripple current I is negligible as per assumption 4.

Regarding the Fig.1 the high frequency inverter duty cycle is varied to counter act input voltage and load fluctuations. For minimum input voltage and rated load the inverter switch duty cycle will be maximum. For maximum input voltage and light load the inverter switch duty cycle D will be minimum. The converter is to be analyzed under worst operating conditions and for DC bus voltage of $\pm 20\%$.

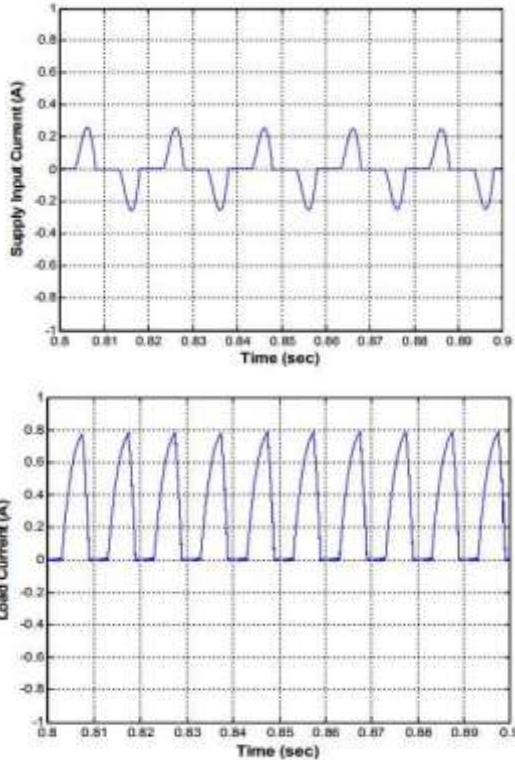


Fig. 3 VSF Supply Input Current and Load Current

In order to illustrate the significance and facilitate the understanding of the characteristics of VSF circuit, the following design example is presented:

The SMR Converter has the following specifications:

TABLE I
SPECIFICATION OF SMR CONVERTER

Output power	15 W = 1.0 p.u.
Minimum rms input voltage	8.5 V = 1.0 p.u.
Inverter Operating frequency	10 KHz
Output Current ripple	10 % peak to peak

From this values parameter of the converter are:

TABLE II
COMPONENT SPECIFICATION OF VSF SMR CONVERTER

1 pu current	1.7647 A
1 pu impedance	4.8167 Ω
1 pu inductance	153. mH
1 pu capacitance	660.85 μ F
Eirms	8.5 V
F	50 Hz
Li	10 mH(parasitic)
Ci	19134 μ F
Lo	0.4 mH
Co	17314 μ F
ZL	2.8 Ω

The supply and load current shown in Fig. 4 and Fig. 5 respectively appeared as pulsed signal so it is high distorted waveform. Also, THDi = 116 % and PF= 0.633.

IV. HIGH FREQUENCY CURRENT SOURCE FED SWITCHED MODE RECTIFIER

In case of CSF SMR converter the duty cycle and the frequency of the boost switch is varied for input voltage variations.

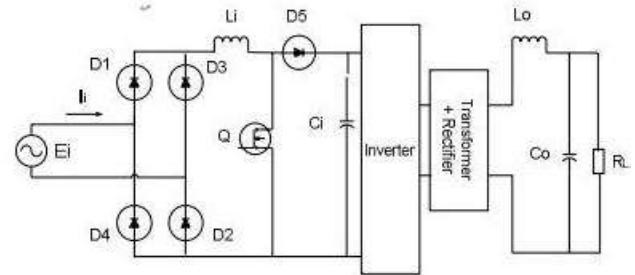


Fig. 4 CSF SMR Converter

The converter is design and analyzed under the following assumptions where application, same as the assumption used for the design of the VSF SMR Converter:

1. All the switching devices are ideal and the forward voltage drop and reverse leakage currents of the diode are negligible.
2. The filter components are lossless.
3. The load voltage and the inverter input voltage are assumed to be ripple free.
4. The high frequency transformer turns ratio is 1:1.
5. The ac source is ideal.

The SMR converter has the same specification as shown in Table 1 the component specification for CSF are as follows:

TABLE III
COMPONENT SPECIFICATION OF CSF SMR CONVERTER

1 pu current	1.7647 A
1 pu impedance	4.8167 Ω
1 pu inductance	153. mH
1 pu capacitance	660.85 μ F
Eirms	8.5 V
F	50 Hz
Li	0.4950 mH (parasitic)
Ci	38924 μ F
Lo	0.104 mH
Co	8260.6 μ F
ZL	2.8 Ω

It is clear seen from Table 4 that by varying D the THD, PF and 3rd harmonics varies. From the Table it is found that at D =0.8 the THD reduced to 69 % and if it is compared with VSF SMR in section II. Authors conclude that CSF SMR reduce the harmonic distortion. Also the PF increase to 0.81 which is higher in the case of VSF SMR.

Compared with passive filter, Active Power Filter (APF) has the higher control ability to compensate load reactive and harmonic current components. Taking the shunt type active power filter as an example, a controlled current is generated from the APF to compensate the load ripple current as far as possible.

TABLE IV
THD, PF and 3rd ORDER HARMONIC FOR DIFFERENT
VALUE OF DUTY CYCLE

Duty Cycle	THD _i (%)	PF	3 rd (%)
0.4	119	0.62	42.85
0.5	128	0.58	50.1
0.6	114	0.61	42.7
0.7	78	0.77	35.2
0.8	69	0.81	31.1
0.9	81	0.76	39.4

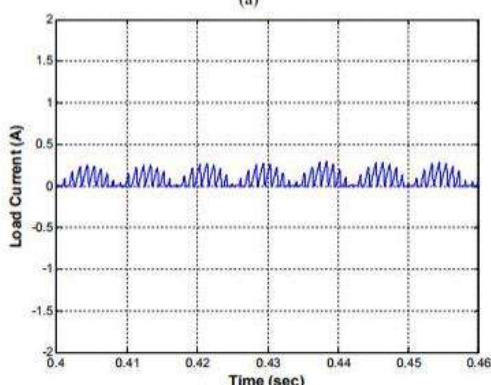
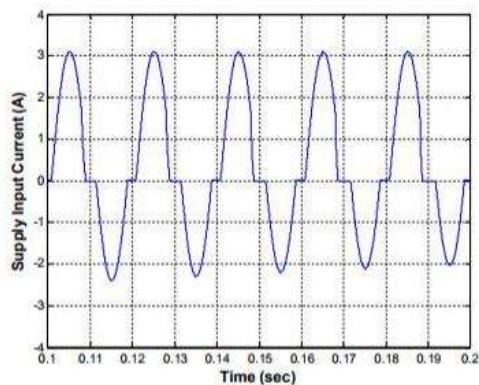


Fig. 5 CSF Supply Input Current and Load Current



Fig. 6 Variation of THD_i and 3rd order harmonic with respect to duty cycle.

V. PASSIVE WAVE SHAPING METHOD

In this section wave shaping method proposed as in [5] used to design passive wave shaping filter to reduce THD_i and improve PF. Assumption 1, 2 and 5 in Section II are valid here. The same input that used for VSF are going to be use here to design passive filter as follows:

TABLE V
COMPONENT SPECIFICATION OF PASSIVE WAVESHAPING
FILTER

1 pu current	1.7647 A
1 pu impedance	4.8167 Ω
1 pu inductance	153. mH
1 pu capacitance	660.85 μF
Eirms	8.5 V
F	50 Hz
Li	4.7 mH
Ci	238 μF
Lo	0.5 mH
Co	3.1 μF
ZL	2.8 Ω

The PF improved to be 0.86 in this case compare with VSF (0.63) and CSF (0.81). Table VI illustrate a comparison between the harmonic distortions of the three methods. It is clear that THD_i in the passive method is 56.2 % which is less in comparison with that of VSF (116%) and CSF (69%).

Also the 3rd harmonic was reduced in the passive method but it seen that the 9th and 11th harmonic are increased. The supply current waveforms in Fig. 5 and Fig. 6 are more close to the sinusoidal waveform in comparison with that of Fig.4 which lead to less harmonic distortion.

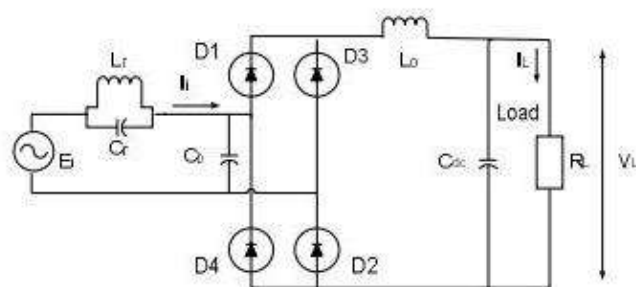


Fig. 7 Passive Wave Shaping Filter

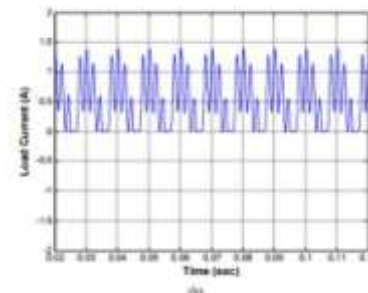
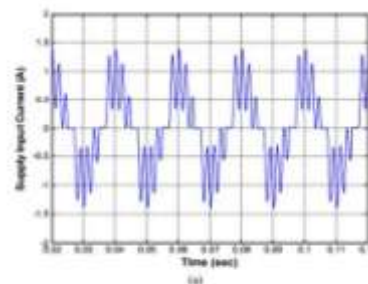


Fig. 8 Passive Wave Shaping method Supply input current and Load Current.

The advantage of Passive Wave Shaping Filter as follows:

1. Well-designed passive filter can be implemented in larger sizes of MVAR of ratings and prove almost maintenance free service.
2. These are more economical to implement than their counter parts like synchronous condenser.
3. A fast response time of the order of one cycle or less can be obtained, which is important for correction of flickering voltage dips due to arc furnace loads.
4. Unlike rotating power capacitors do not contribute to the short circuit current.
5. A single installation can serve many purposes like reactive power compensation, reducing THD to acceptable limits, voltage support on critical buses in case of source outage and reducing the starting impact and voltage drop of large motors.
6. When a choice is available between Active & Passive Wave Shaping Filter, it is more economical, less complex, ease control requirement and not required any PEM.

Although Passive Wave Shaping Method suffered from some of the limitations:

1. Fixed Compensation: It will provide fixed compensation. Tuning is very difficult in case of passive filter.
2. Larger Size: The passive filter is bulkier, heavier, costlier and very noisy.
3. Resonance: Source impedance is not accurately known and varies with the system configuration strongly influences filter characterizes of passive filter. [12]

The Shunt Filter acts as a sink to harmonic current flowing through the source in the worst case, the passive filter falls in series resonance with source impedance. At a specific frequency anti resonance or parallel resonance occurs between the source impedance and the shunt passive filter is called harmonic amplifications.

Various series L-C resonant trap filters are connected across the line terminal to attenuate the specific order harmonics. This approach is simple, rugged, reliable and helpful in reducing EMI. However, it is bulky and cannot completely regulate nonlinear loads, and it is needed the redesign adapted to load changes.

VI. CONCLUSION

A comparison between passive and active input current wave shaping methods for single-phase rectifiers has been proposed and the relevant waveforms of the input and output currents obtained from computer simulation have been shown in this paper.

Also, a comparison between improved PF and reduction in THD was shown that the passive method is better than active one in improving PF and reducing THDi.

It is found that use of Active Harmonic Filter increases the input power factor approximately from 0.63 to 0.81. While, in passive filter the PF increased to 0.86. Moreover, Total Harmonic Distortion THDi was reduced in passive method more in comparison with active one when a choice is available between Active & Passive Wave Shaping Filter, it is

more economical, less complex, ease control requirement and not required any PEM.

REFERENCES

- [1] Nirav D. Mehta, Ashish P. Patel, A. M. Haque, "A Review on Power Quality Improvement via Custom Power Devices", International Journal of Advanced Engineering Management and Science (IJAEMS) Vol. 2 Issue-9 ISSN 2454-1311 pp. 1632-1640 September 2016
- [2] J.B. Pujara, N. D. Mehta "Harmonics and Its Mitigation" in Proceeding of National Conference on Advances in Power System and Energy Management ASPM 2008 Chitakara March 1st – 2nd 2008 pp.20.
- [3] N.D.Mehta, J.B. Pujara "Power Electronics Application to Power System" International Conference on Emerging Technologies and Application in Engineering, Technology and Sciences, Rajkot January 13th – 14th, 2008. ICETATES 2008 vol.2 pp. 2021-26.
- [4] P.H.Jasani, N.D.Mehta, M.A.Patel "Power Quality Improvement using PWM Technique" Proceedings of Power Electronic and Intelligent Control, Jaipur PEIC 2007 March 2007.
- [5] O. Stihl and B. T. Ooi, "A single-phase controlled-current PWM rectifier," IEEE Trans. on Power Electronics, vol. 3, no.4, pp. 453- 459, Oct. 1988.
- [6] H. A. Kazem, A. A. Alblushi, A. S. Aljabri, and K. H. Alsaidi, "Simple and advanced models for calculating single-phase diode rectifier line-side harmonics," Trans. on Engineering, Computing, and technology, vol. 9, pp. 179-183, Nov. 2005.
- [7] Kazem H.A. "A Comparative Evaluation Of Active And Passive Wave shaping Methods For Ac-Dc Converter" Iranian Journal Of Electrical And Computer Engineering (IJECE) Winter-Spring 2011, Volume 10, Number 1; Page(s) 41 To 44.
- [8] H. A. Kazem, "Input current waveshaping methods applied to single-phase rectifier", in Proc. of Int. Conf. on Electrical Machines and Systems, ICEM'07, pp. 54-57, Seoul, Korea, 8-11 Oct. 2007.
- [9] A. R. Prasad, P. D. Ziogas, and S. Manias, "A comparative evaluation of SMR converters with and without active input current wave shaping," IEEE Trans. On Industrial Electronics, vol. 35, no. 3, pp. 461-468, Aug. 1988.
- [10] H. A. Kazem, "An improved method of passive input current wave shaping for single-phase rectifier," in Proc. of IEEE Conf. on Compatibility in Power Electronics, CPE'07, pp. 1-4 pp., Gdansk, Poland, 29 May- 1 Jun. 2007.
- [11] H. A. Kazem, "Single-phase rectifier with novel passive wave shaping filter," Int. J. of Applied Engineering Research, vol. 4, no. 3, pp. 1-6, Mar. 2009.
- [12] Ned Mohan, "Power Electronics: Converters, Application and Design" Ch. 13 pp. 386-387, Wiley India P. Ltd, New Delhi, 2010.