

1907

A Portfolio of Carnegie Libraries : Being a Separate Issue of the Illustrations from "a Book of Carnegie Libraries

Follow this and additional works at: <https://scholarsjunction.msstate.edu/caad-rare-books>

Recommended Citation

"A Portfolio of Carnegie Libraries : Being a Separate Issue of the Illustrations from "a Book of Carnegie Libraries" (1907). *CAAD Rare Book Collections*. 1.
<https://scholarsjunction.msstate.edu/caad-rare-books/1>

This Document is brought to you for free and open access by the Bob and Kathy Luke Architecture, Art, and Design Library at Scholars Junction. It has been accepted for inclusion in CAAD Rare Book Collections by an authorized administrator of Scholars Junction. For more information, please contact scholcomm@msstate.libanswers.com.

A PORTFOLIO
OF
CARNEGIE LIBRARIES

BEING A SEPARATE ISSUE OF THE
ILLUSTRATIONS FROM

"A BOOK OF CARNEGIE LIBRARIES"

BY

THEODORE WESLEY KOCH

LIBRARIAN, UNIVERSITY OF MICHIGAN



ANN ARBOR, MICHIGAN
GEORGE WAHR, PUBLISHER

1907

9005

Copyright, 1907

BY THEODORE W. KOCH

EDITION OF FIVE HUNDRED COPIES

THE UNIVERSITY PRESS, CAMBRIDGE, U. S. A.

P R E F A C E

THE unavoidable delay in the issue of my "Book of Carnegie Libraries," and the fact that the illustrations had been completed some time since, must be the excuse for issuing these plates in advance of the book itself, which will contain both text and illustrations. As the text of the book will by no means be confined to the subject matter of the illustrations, and there are doubtless those to whom the illustrations will appeal more strongly than the historical and descriptive letterpress, it was thought expedient to issue the Portfolio at this time for the especial benefit of such as are more particularly interested in the architectural side of the subject. It was thought, moreover, that the portfolio style, with the loose plates, would be found more acceptable than the book form by those making a comparative study of library designs.

There are a few illustrations in the collection which are not architectural, but have been included here because of their appearance in the book. Such are the views of home library groups, travelling libraries, library clubs, and a few portraits of Mr. Carnegie and of Colonel Anderson, from whose Library Institute Mr. Carnegie borrowed books as a boy and so conceived the initial idea of his library crusade.

THEODORE W. KOCH.

ANN ARBOR, MICHIGAN,
April 11, 1907.

\$ 2.50

Geo. D. Wahr

LIST OF PLATES

NOTE.— The figures in parentheses give the amount of Mr. Carnegie's donation to the various town and city libraries included in the list. In some cases the cost of the building exceeded this amount and the difference was paid from other sources. The money for the branch libraries of the larger cities was given as a lump sum, and the cost of the separate branches is therefore not given in the subjoined list. The names of the architects are given in italics.

Andrew Carnegie. From the oil painting by John W. Alexander

- | | |
|-----|--|
| | <i>Frontispiece</i> |
| 1. | Mr. Carnegie in his private library. Photo by Miss Frances B. Johnston |
| 2. | Colonel James Anderson. From an oil painting |
| 3. | Allegheny, Pennsylvania <i>Smithmyer & Pelz</i>
City Hall Square and the Carnegie Library
Monument in memory of Colonel James Anderson |
| 4. | Book-plate of the Anderson Library |
| 5. | Colonel James Anderson. From bust by D. C. French |
| 6. | "The Working Man." From the model by D. C. French for the
Anderson memorial |
| 7. | New York City Branches: |
| | " Rivington Street. Open-air reading room and roof-garden |
| 8. | " Hudson Park. Two views |
| 9. | " 125th St. and 135th St. <i>McKim, Mead & White</i> |
| 10. | " 125th St. Floor plan |
| 11. | " 67th St. <i>Babb, Cook & Willard</i> |
| | " 79th St. (Yorkville Branch) <i>James Brown Lord</i> |
| 12. | " Yorkville Branch. Floor plan |
| 13. | " Chatham Square. Two interior views |
| 14. | " " " Floor plans <i>McKim, Mead & White</i> |
| 15. | " Mott Haven <i>Babb, Cook & Willard</i> |
| | " Washington Ave. <i>Carrère & Hastings</i> |
| 16. | " Mott Haven. Floor plans |
| 17. | " Suburban Branches: |
| | " Tottenville, Staten Island <i>Carrère & Hastings</i> |
| | " Kingsbridge, New York <i>McKim, Mead & White</i> |
| | " Port Richmond, Staten Island . . . <i>Carrère & Hastings</i> |
| 18. | " Port Richmond Branch. Floor plan |
| 19. | Brooklyn. Williamsburgh Branch. Exterior
and auditorium <i>Walker & Morris</i> |
| 20. | " Williamsburgh Branch. Floor plan |
| 21. | " Bedford Branch <i>Lord & Hewlett</i> |
| | " Flatbush Branch <i>R. L. Daus</i> |
| 22. | " Bedford Branch. Floor plan |
| 23. | " Flatbush Branch. Charging Desk
and Children's Room |
| 24. | " Flatbush Branch. Floor plans |
| 25. | " De Kalb Branch. Exterior and
interior <i>W. B. Tubby</i> |
| 26. | " De Kalb Branch. Floor plan |

LIST OF PLATES

27. Brooklyn. Carroll Park Branch. Exterior and interior *W. B. Tubby*
28. " Carroll Park Branch. Floor plans
29. Melrose, Mass. Front and side view. (\$25,000) . . . *Penn Varney*
30. " " Floor plans
31. Clinton, Mass. Bigelow Library. Exterior and interior. (\$25,000) . . . *Winslow & Bigelow*
32. " " Floor plans
33. Norwalk, Connecticut. (\$20,000) *W. & G. Audsley*
34. " " Floor plan
35. Philadelphia Branches:
 - " West Philadelphia *C. C. Zantzing*
 - " Lehigh Avenue *G. W. & W. D. Hewitt*
 - " Tacony *Lindley Johnson*
36. " West Philadelphia, Lehigh Ave., and Tacony. Interiors
37. Syracuse, New York. (\$200,000) *James A. Randall*
- Binghamton, New York. (\$75,000) *S. O. & H. A. Lacey*
38. Syracuse, New York. Floor plan
39. Johnstown, New York. (\$25,000) *Fuller & Pitcher*
- Amsterdam, New York. (\$25,000) *Fuller & Pitcher*
40. Johnstown, New York. Floor plan
- Amsterdam, New York. Floor plan
41. East Orange, New Jersey. (\$50,000) . . . *Jardine, Kent & Jardine*
42. " " Floor plan
43. " " Two interior views
44. " " Basement plan
45. Washington, D. C. (\$350,000) *Ackerman & Ross*
46. " " Floor plans
47. " " A line at the return desk
- " " Young People's Room
48. Hagerstown, Maryland. Travelling Library Wagon from the Washington County Library
49. Atlanta, Georgia. (\$175,000) *Ackerman & Ross*
50. " " Floor plan
51. " " Marble bust of Andrew Carnegie *Gaetano Trentanove*
52. " " Children's Room
- Travelling Libraries carried by the Seaboard Air Line
53. Nashville, Tennessee. Exterior and interior. (\$100,000) *Ackerman & Ross*
54. " " Floor plans
55. Chattanooga, Tennessee. (\$50,000) *R. H. Hunt*
- Norfolk, Virginia. (\$50,000) *Herbert D. Hale and Henry G. Morse*
56. " " Floor plan
57. Jacksonville, Florida. (\$50,000) *H. J. Klutho*
- " " Reading Room (for colored patrons)
58. " " Floor plans
59. Montgomery, Alabama. (\$50,000) *York & Sawyer*
- Tuskegee, Alabama. Library of Tuskegee Institute. (\$25,000) *R. R. Taylor*
60. Montgomery, Alabama. Floor plan

LIST OF PLATES

- | | | | |
|-----|---|---|---------------------------|
| 61. | Pittsburg, Pennsylvania | | |
| | “ Carnegie Institute | | <i>Alden & Harlow</i> |
| 62. | “ Work with the children of Pittsburg | | |
| 63. | “ East Liberty Street Branch. Ex-
terior and interior | | |
| 64. | “ East Liberty Street Branch. Floor
plan | | |
| 65. | “ Lawrenceville Branch
Work among colored children, Soho
Hill | | |
| 66. | “ Lawrenceville Branch. Floor plans | | |
| 67. | “ Hazelwood Branch. Children’s
Room | | |
| 68. | “ Hazelwood Branch. Floor plans | | |
| 69. | “ Mt. Washington Branch
Library club work in the Jewish
quarter | | |
| 70. | “ Mt. Washington Branch. Floor
plans | | |
| 71. | “ Wylie Avenue Branch
Home library group | | |
| 72. | “ Wylie Avenue Branch. Floor plan | | |
| | “ West End Branch. Floor plan | | |
| 73. | Cincinnati. Walnut Hills Branch. Exterior
and interior | <i>McLaughlin & Gilmore</i> | |
| 74. | Cincinnati. Walnut Hills Branch. Floor
plans | | |
| 75. | Cleveland. Broadway Branch. Exterior and
interior | <i>Charles Morris
(With Lehman & Schmidt)</i> | |
| 76. | Cleveland. Broadway Branch. Children’s room
Home library group | | |
| 77. | Cleveland. Woodland Branch. Exterior and
interior | <i>W. R. Watterson</i> | |
| 78. | Cleveland. Woodland Branch. Floor plan | | |
| 79. | Cleveland. Miles Park Branch. Exterior and
interior | <i>Edward L. Tilton</i> | |
| 80. | Cleveland. Miles Park Branch. Floor plans | | |
| 81. | Port Huron, Michigan. Exterior and interior.
(\$40,000) | <i>Patton & Miller</i> | |
| 82. | “ “ Floor plans | | |
| 83. | Madison, Wisconsin. Exterior and interior . .
(\$75,000) | <i>Frank Miles Day
& Brother</i> | |
| 84. | “ “ Floor plans | | |
| 85. | Elkhart, Indiana. Two exterior views. (\$40,000) | <i>Wing & Mahurin</i> | |
| 86. | “ “ Floor plan | | |
| 87. | Freeport, Illinois. (\$30,000) | <i>Patton & Miller</i> | |
| | Streator, Illinois. (\$35,000) | <i>Patton & Miller</i> | |
| 88. | “ “ Floor plan | | |
| 89. | Darlington, Wisconsin. Exterior and interior.
(\$10,000) | <i>Claude & Starck</i> | |
| 90. | “ “ Floor plans | | |
| 91. | Baraboo, Wisconsin. (\$15,000) | <i>Claude & Starck</i> | |
| | Kaukauna, Wisconsin. (\$10,000) | <i>Claude & Starck</i> | |
| 92. | Baraboo, Wisconsin. Floor plans | | |

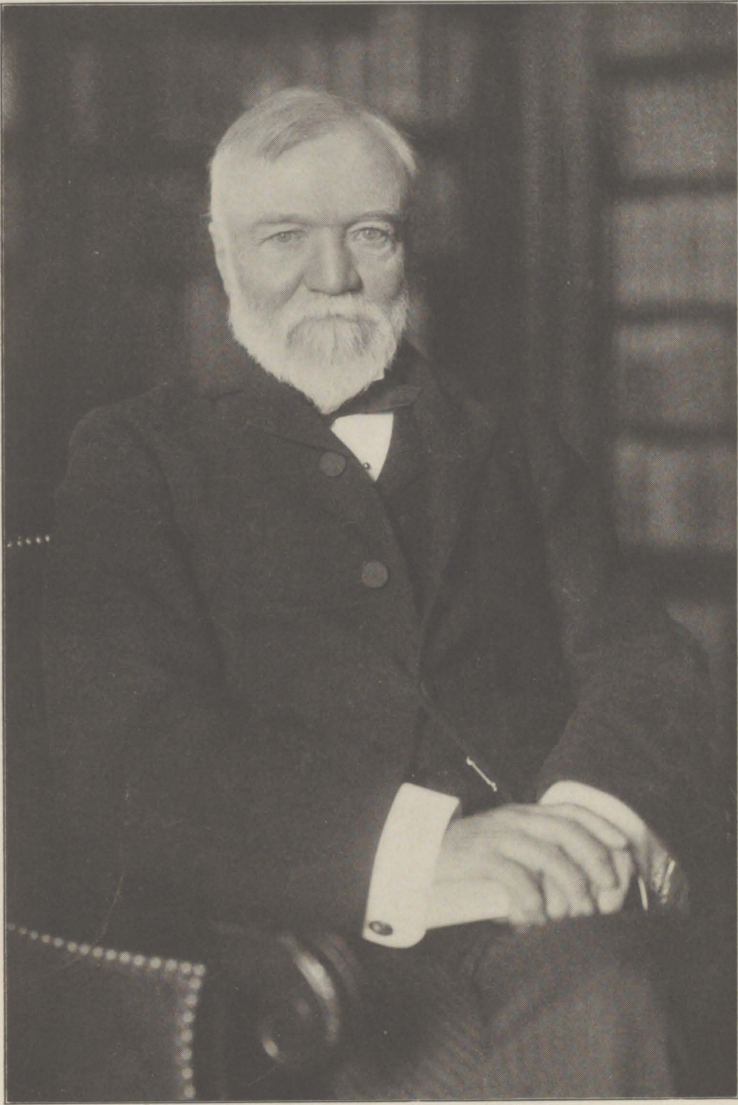
LIST OF PLATES

93. Monticello, Iowa. (\$10,000) *Patton & Miller*
 Marshalltown, Iowa. (\$30,000) *Patton & Miller*
94. " " Floor plans
95. Eldora, Iowa. Exterior and interior. (\$10,000) . *Patton & Miller*
96. " " Floor plan
 Monticello, Iowa. Floor plan
97. Davenport, Iowa. Exterior and interior. (\$75,000) *Calvin Kiessling*
98. " " Floor plan
99. Leavenworth, Kansas. (\$25,000) *M. R. Sanguinet*
 Lincoln, Nebraska. (\$75,000) *Fisher & Lawrie*
100. Leavenworth, Kansas. Floor plan
 Lincoln, Nebraska. Floor plan
101. Springfield, Missouri. (\$50,000) *Patton & Miller*
 Sedalia, Missouri. (\$50,000) *Mauran, Russell & Garden*
102. Springfield, Missouri. Floor plans
103. Dallas, Texas. (\$50,000) *M. R. Sanguinet*
 Fort Worth, Texas. (\$50,000) *Herbert H. Green*
104. Dallas, Texas. Floor plans
105. Cheyenne, Wyoming. (\$50,000) *Patton, Fisher & Miller*
 Tucson, Arizona. (\$25,000) *George C. Frost*
106. Cheyenne, Wyoming. Floor plans
107. Colorado Springs, Colorado. (\$60,000) *Calvin Kiessling*
108. " " " First floor plan
109. Oakland, California. (\$50,000) *Bliss & Faville*
 San José, California. (\$50,000) *William Binder*
110. Oakland, California. Reading Room
111. Pomona, California. (\$15,000) *Burnham & Bliesner*
 Alameda, California. (\$35,000) *Curtis & Wilcox*
112. Riverside, California. (\$20,000) *Burnham & Bliesner*
 Santa Ana, California. (\$15,000) *Dennis & Farwell*
113. San Diego, California. Exterior and interior.
 (\$60,000) *Ackerman & Ross*
114. Art Room in Public Library, Seattle, Wash-
 ington *P. J. Weber*
115. Boys Reading Fraternity, Camden, New Jersey
116. Auditorium in Free Public Library, Schenec-
 tady, New York
 Auditorium in Free Public Library, Cedar
 Rapids, Iowa
117. Margaret Carnegie Library, Mills College,
 California. (\$18,400) *Julia Morgan*
118. Beloit College Library. (\$50,000) *Patton & Miller*
 Iowa College Library. (\$50,000) *Hallett & Rawson*
119. Southern Library School. Carnegie Library,
 Atlanta, Georgia
120. Wisconsin Library School. Free Library,
 Madison, Wisconsin. Two views



ANDREW CARNEGIE

From the oil painting by John W. Alexander



Copyright, 1905, by MISS FRANCES B. JOHNSTON

MR. CARNEGIE IN HIS PRIVATE LIBRARY

PLATE 2

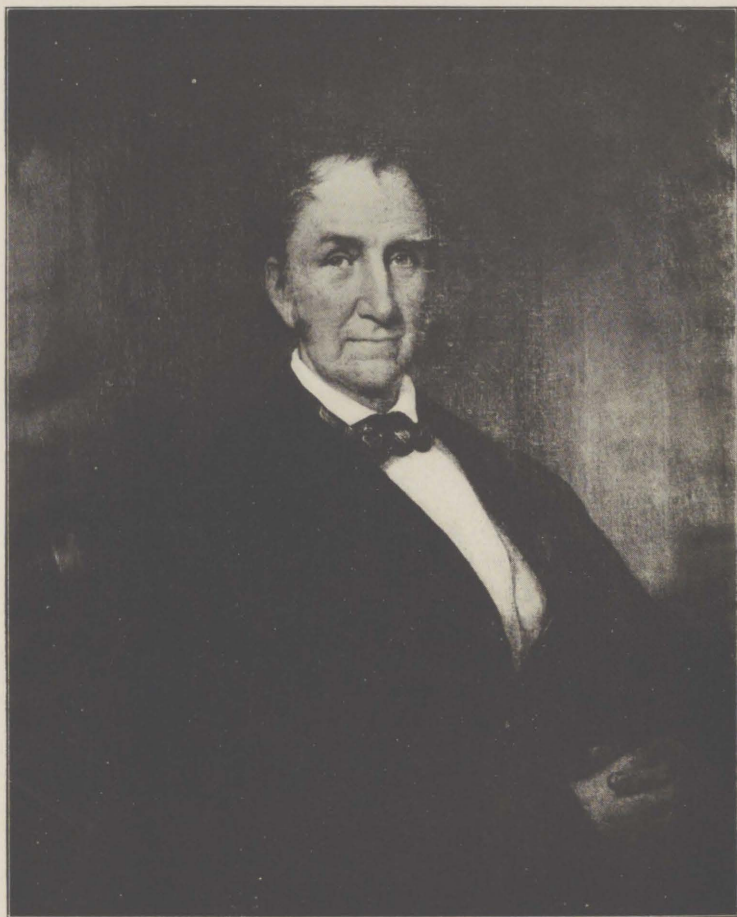


PHOTO. BY ALEX. HUDSON, PITTSBURG

COLONEL JAMES ANDERSON
(1785-1861)

From an oil painting in the office of the warden, Western Penitentiary, Allegheny, Pennsylvania

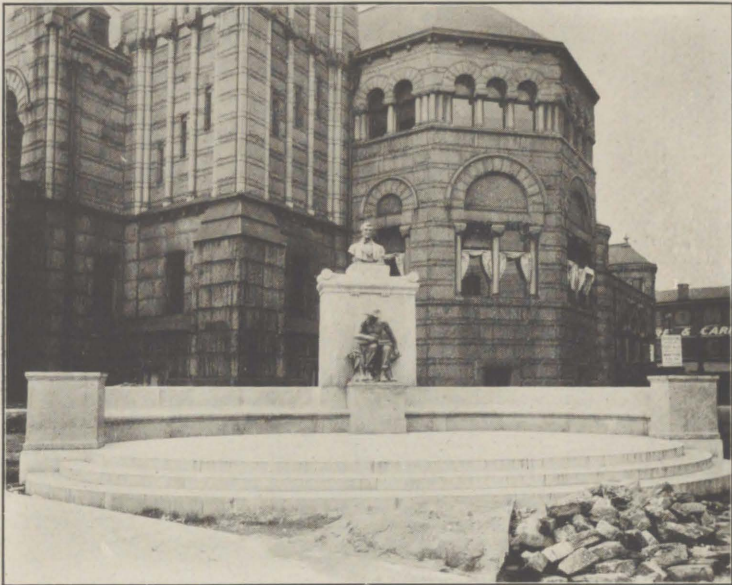
ALLEGHENY, PENNSYLVANIA



SMITHMYER & PELZ, ARCHITECTS,
Washington, D. C.

Copyright, 1905, by DETROIT PUBLISHING COMPANY

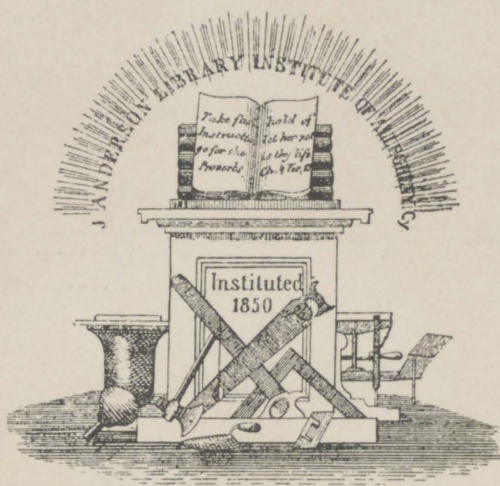
CITY HALL SQUARE AND THE CARNEGIE LIBRARY



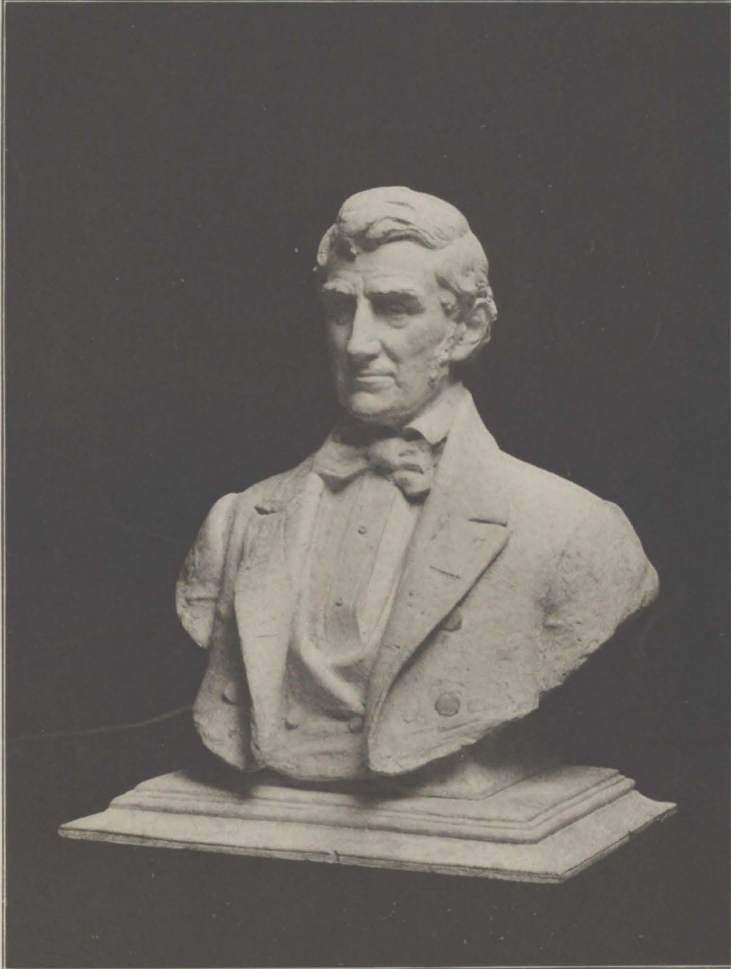
HENRY BACON, ARCHITECT—DANIEL CHESTER FRENCH, SCULPTOR

PHOTO BY CASTOR

MONUMENT IN MEMORY OF COLONEL JAMES ANDERSON



BOOK-PLATE OF THE ANDERSON LIBRARY
From which Mr. Carnegie borrowed books in his boyhood



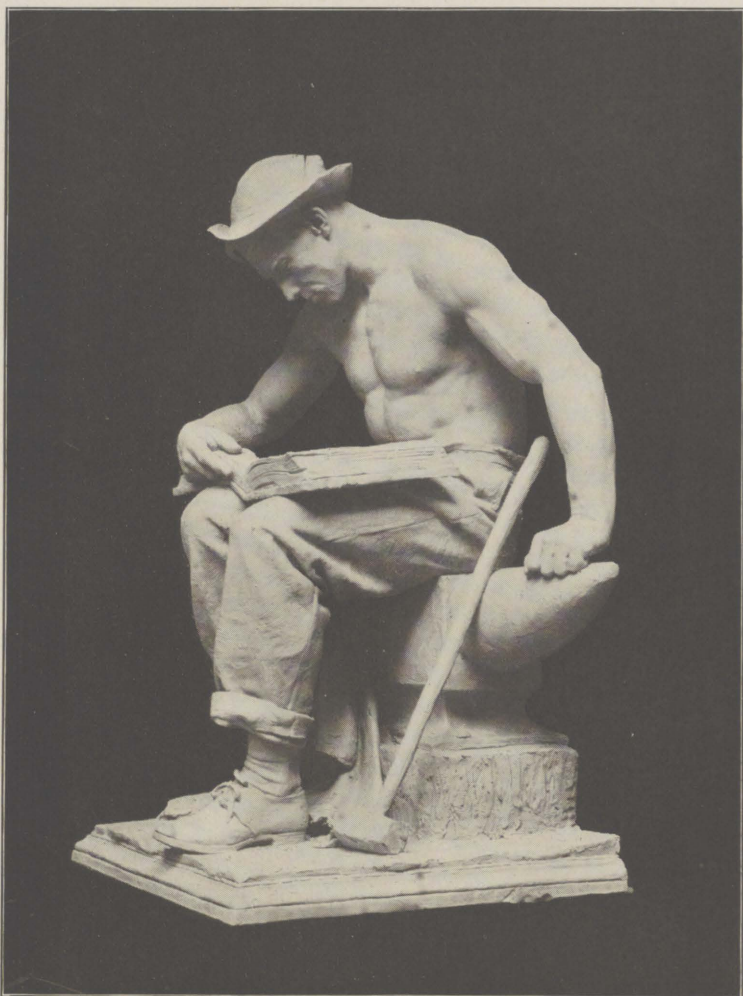
D. C. FRENCH, SCULPT

PHOTO. BY A. B. BOGART, N. Y.

Portrait bust of
COLONEL JAMES ANDERSON,
founder of the

"J. ANDERSON LIBRARY INSTITUTE OF ALLEGHENY CITY"

PLATE 6



D. C. FRENCH, SCULPTIT

PHOTO. BY A. B. BOGART, N. Y.

THE WORKING MAN

From the artist's model for the Anderson Memorial



PHOTOS, BY GEORGE GRANTHAM BAIN

OPEN-AIR READING ROOM AND ROOF-GARDEN,
RIVINGTON STREET BRANCH,
NEW YORK CITY

PLATE 8



HUDSON PARK BRANCH, NEW YORK PUBLIC LIBRARY



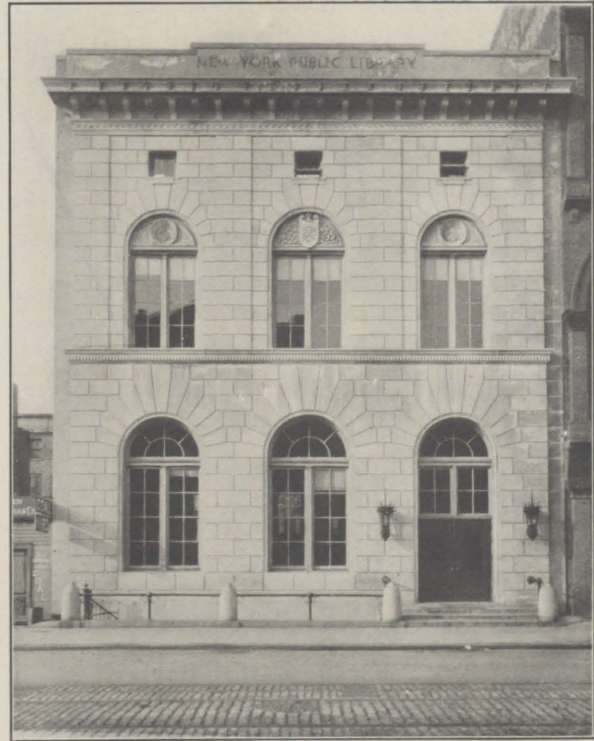
VIEW FROM THE REAR OF THE HUDSON PARK BRANCH

From Charities and the Commons, March 17, 1906

NEW YORK CITY BRANCHES

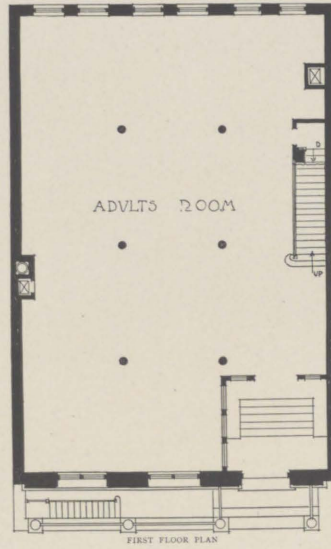
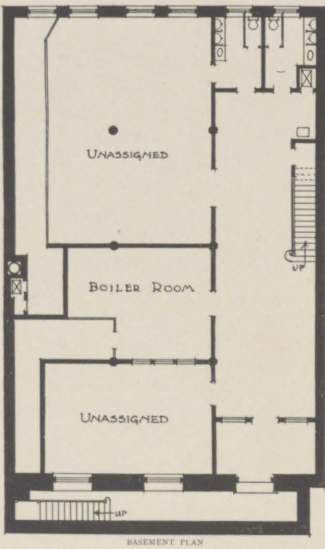
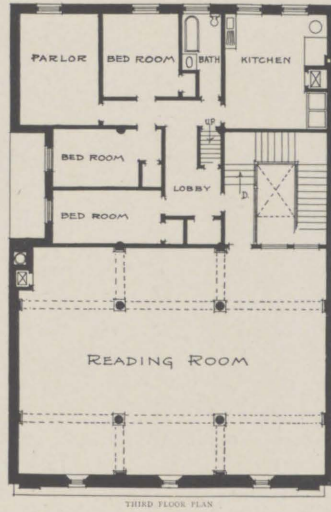
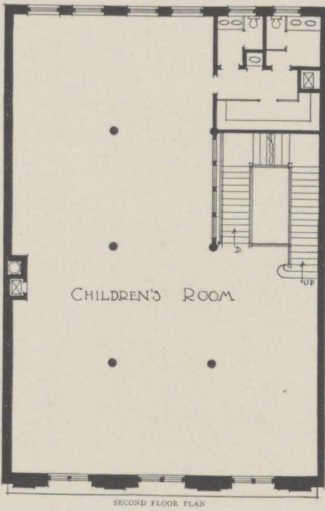


McKIM, MEAD & WHITE, ARCHITECTS PHOTO. BY THE TONNELÉ COMPANY
ONE HUNDRED AND THIRTY-FIFTH STREET



McKIM, MEAD & WHITE, ARCHITECTS PHOTO. BY THE TONNELÉ COMPANY
ONE HUNDRED AND TWENTY-FIFTH STREET

PLATE 10



NEW YORK CITY BRANCHES

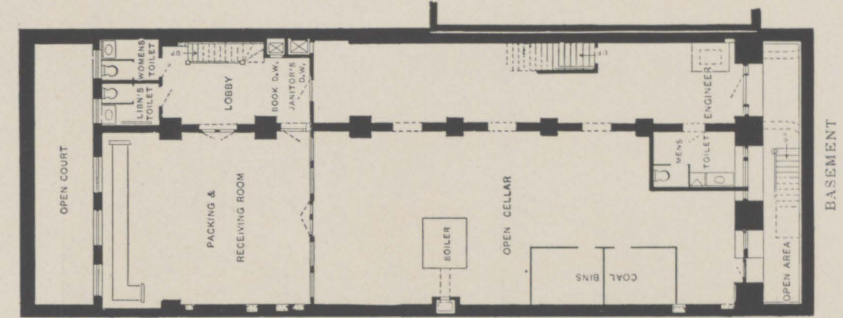


BABB, COOK & WILLARD, ARCHITECTS
PHOTO. BY THE TONNELLÉ COMPANY
SIXTY-SEVENTH STREET

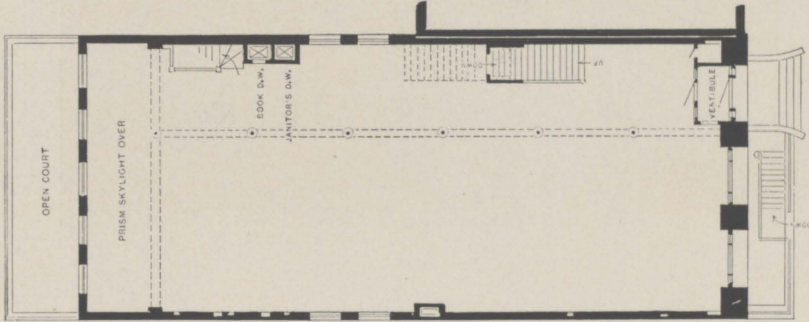


JAS. BROWN LORD, ARCHITECT
PHOTO. BY WURTS BROS.
YORKVILLE BRANCH, SEVENTY-NINTH STREET

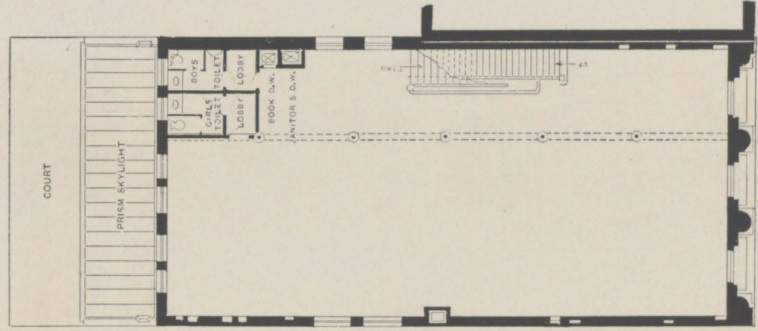
PLATE 12



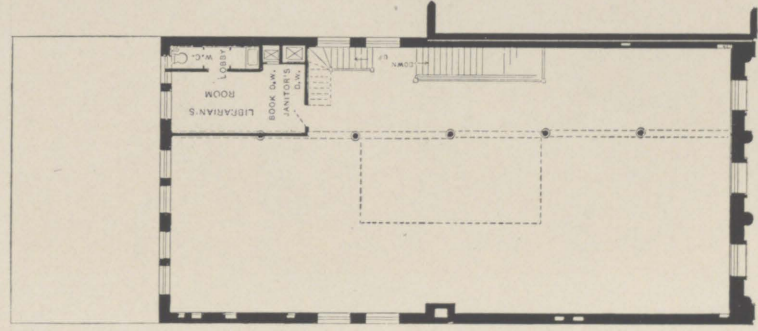
BASEMENT



FIRST STORY



SECOND STORY



THIRD STORY

YORKVILLE BRANCH

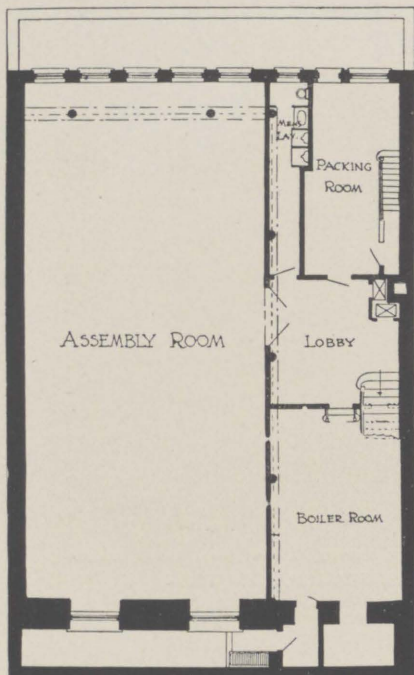


PHOTOS. BY N. L. STEBBINS, BOSTON, FOR LIBRARY BUREAU
THIRD FLOOR, CHATHAM SQUARE BRANCH, NEW YORK
PUBLIC LIBRARY

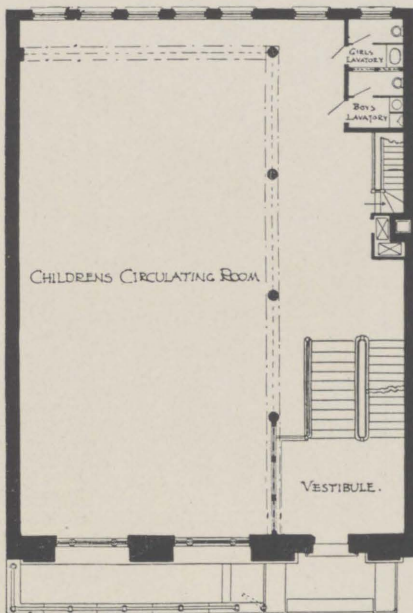


SECOND FLOOR, CHATHAM SQUARE BRANCH, NEW YORK
PUBLIC LIBRARY

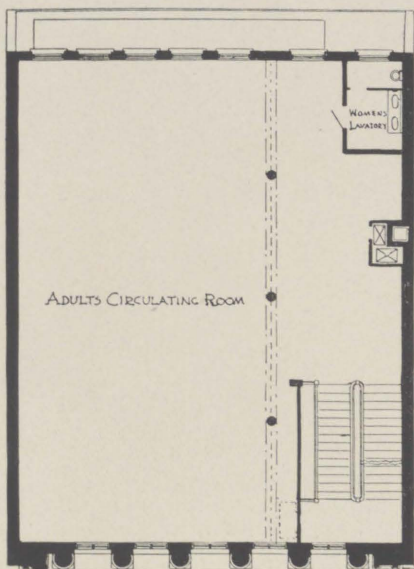
PLATE 14



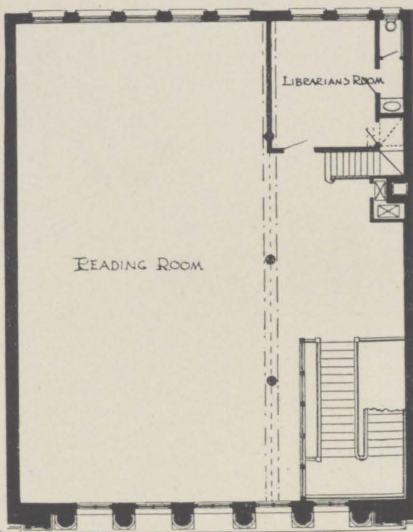
BASEMENT PLAN



FIRST FLOOR



SECOND FLOOR



THIRD FLOOR

MCKIM, MEAD & WHITE, ARCHITECTS, N. Y.

CHATHAM SQUARE BRANCH

NEW YORK CITY BRANCHES



BABB, COOK & WILLARD, ARCHITECTS

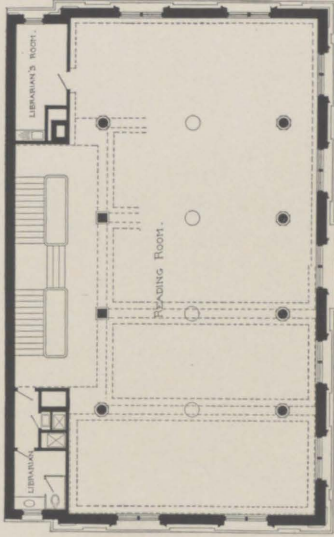
MOTT HAVEN BRANCH, 569 EAST ONE HUNDRED AND FORTIETH STREET,
CORNER OF ALEXANDER AVENUE



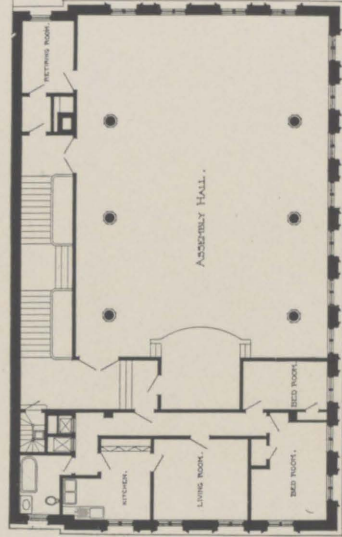
CARRÈRE & HASTINGS, ARCHITECTS

1866 WASHINGTON AVENUE

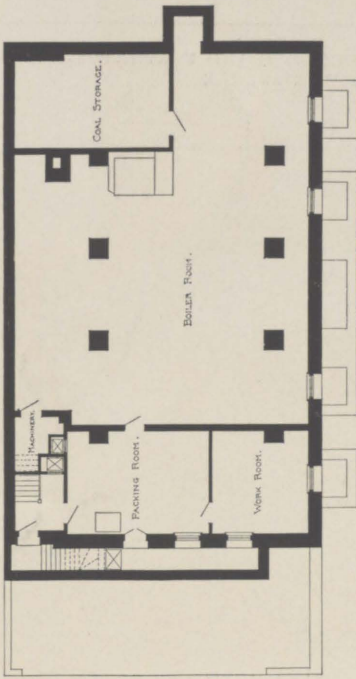
PLATE 16



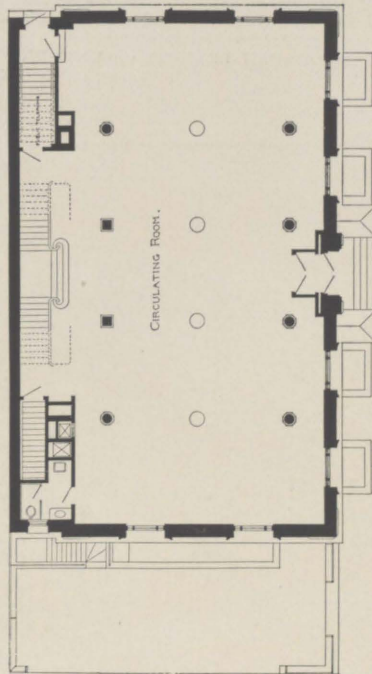
SECOND FLOOR



THIRD FLOOR



BASEMENT



FIRST FLOOR

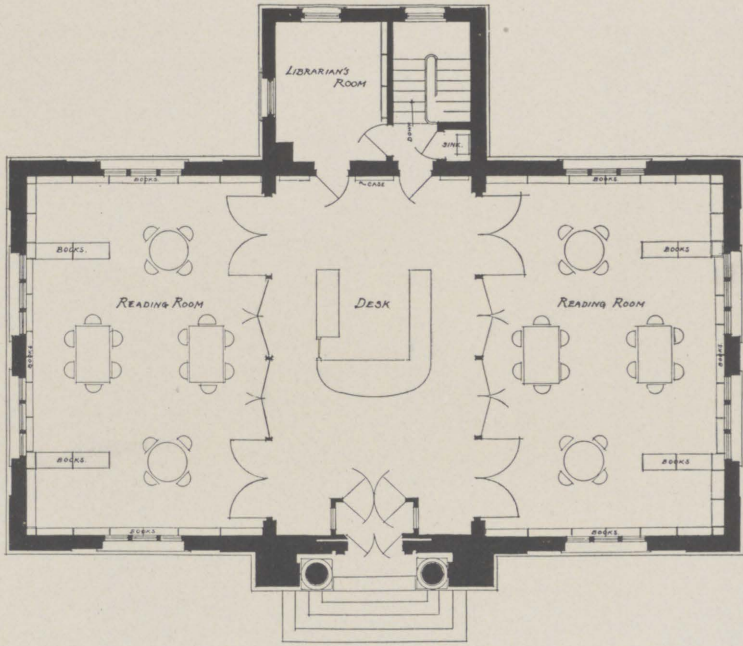
MOTT HAVEN BRANCH, NEW YORK



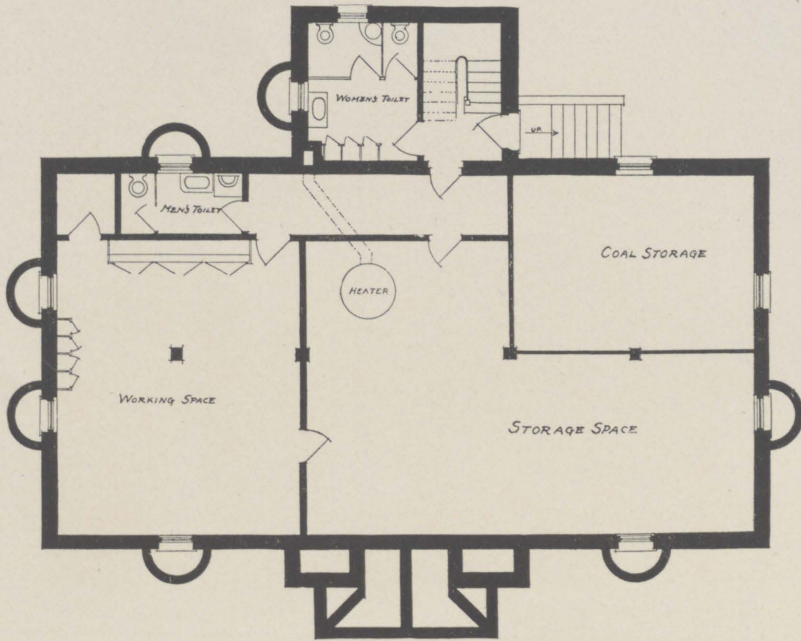
- 1 TOTTENVILLE, STATEN ISLAND
- 2 KINGSBRIDGE, NEW YORK
- 3 PORT RICHMOND, STATEN ISLAND

CARRÈRE & HASTINGS, ARCHITECTS
MCKIM, MEAD & WHITE, ARCHITECTS
CARRÈRE & HASTINGS, ARCHITECTS

NEW YORK SUBURBAN BRANCHES



MAIN FLOOR



BASEMENT

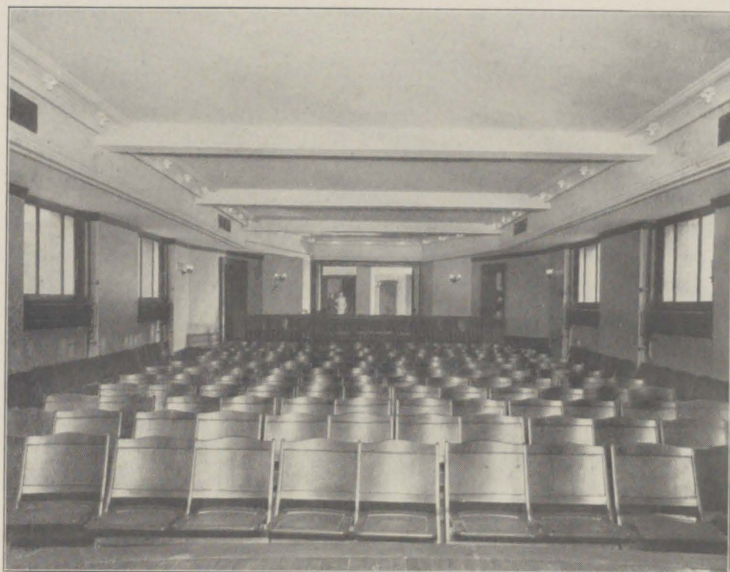
PORT RICHMOND BRANCH



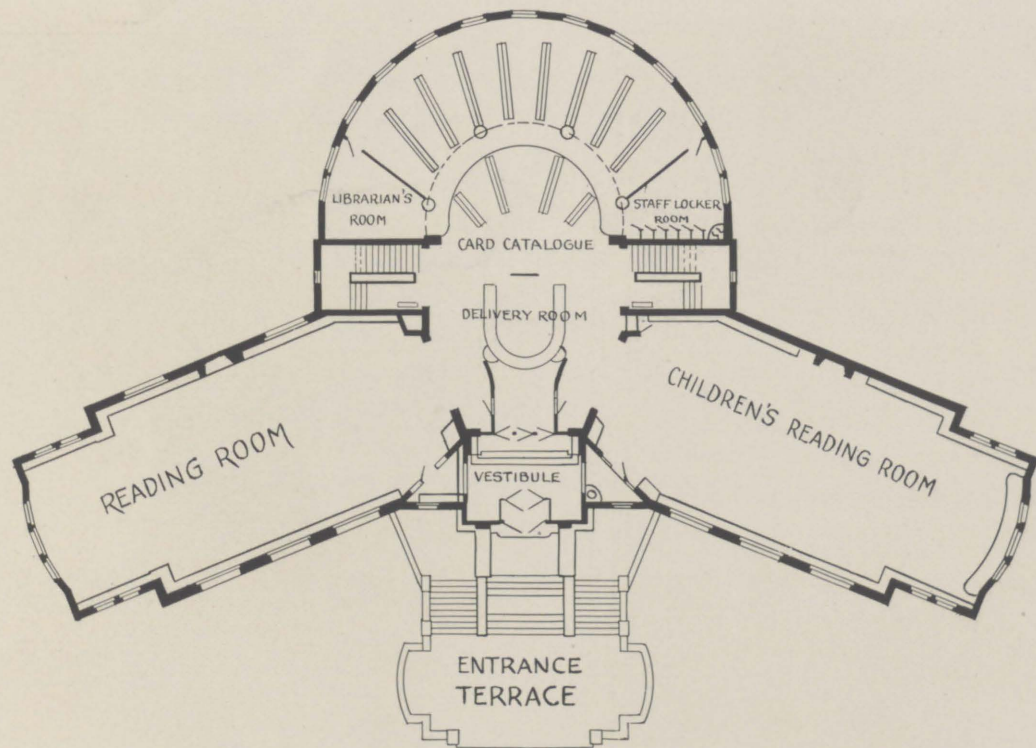
WALKER & MORRIS, ARCHITECTS, N. Y.

PHOTOS. BY FRANK PEARSALL

WILLIAMSBURGH BRANCH, BROOKLYN PUBLIC LIBRARY



AUDITORIUM, WILLIAMSBURGH BRANCH



WILLIAMSBURGH BRANCH, BROOKLYN PUBLIC LIBRARY



LORD & HEWLETT, ARCHITECTS, N. Y.

PHOTO. BY FRANK PEARSALL

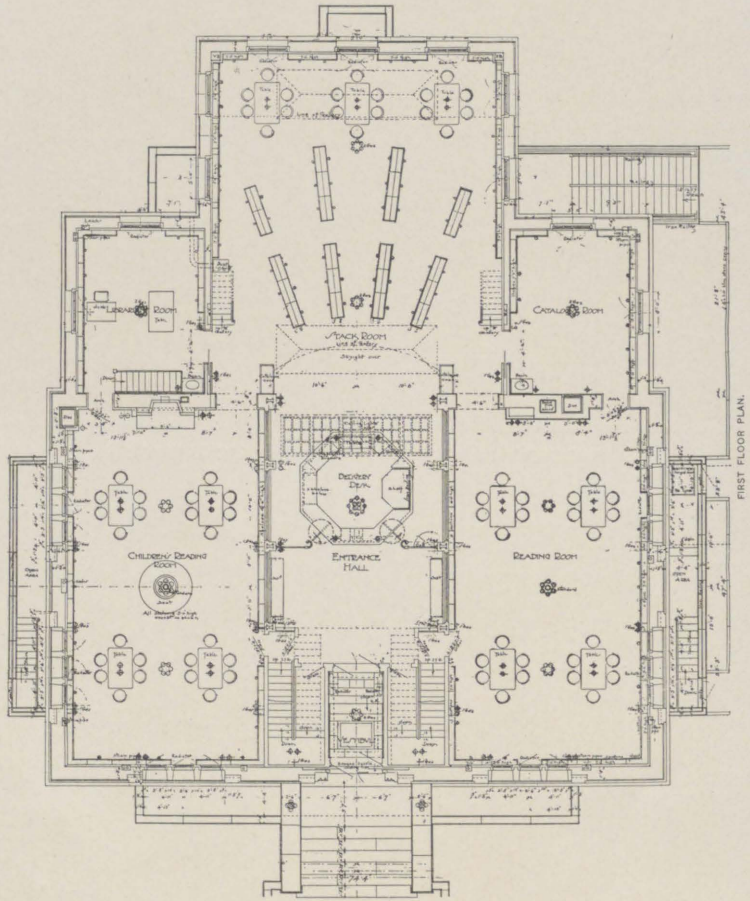
BEDFORD BRANCH, BROOKLYN PUBLIC LIBRARY



R. L. DAUS, ARCHITECT, N. Y.

PHOTO. BY FRANK PEARSALL

FLATBUSH BRANCH, BROOKLYN PUBLIC LIBRARY



BEDFORD BRANCH, BROOKLYN

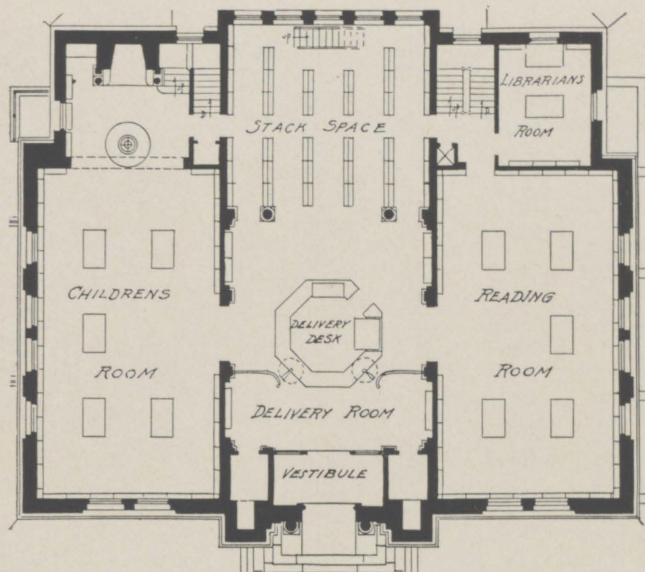


PHOTOS. BY FRANK PEARSALL

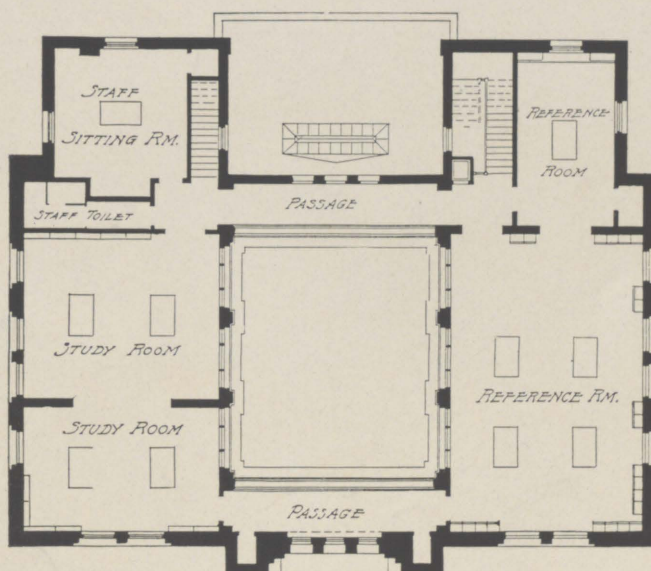
CHARGING DESK, FLATBUSH BRANCH, BROOKLYN



CHILDREN'S ROOM, FLATBUSH BRANCH



FIRST FLOOR PLAN



SECOND FLOOR PLAN

R. L. DAUS, ARCHITECT

FLATBUSH BRANCH



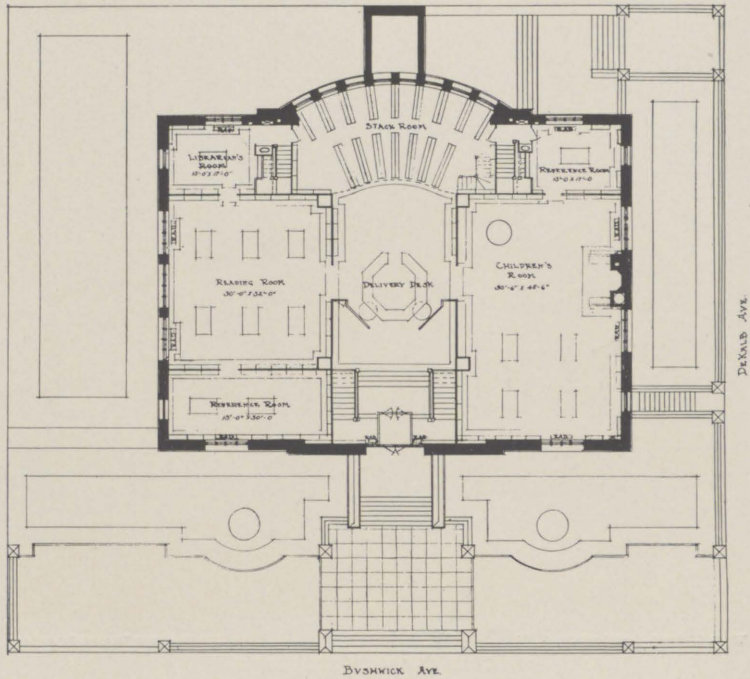
W. B. TUBBY, ARCHITECT, N. Y.

PHOTOS. BY FRANK PEARSALL

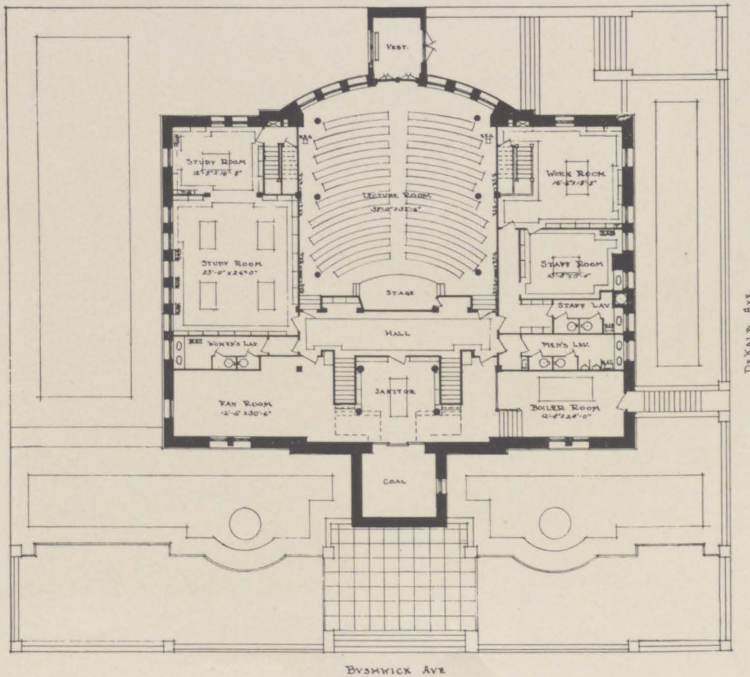
DE KALB BRANCH, BROOKLYN



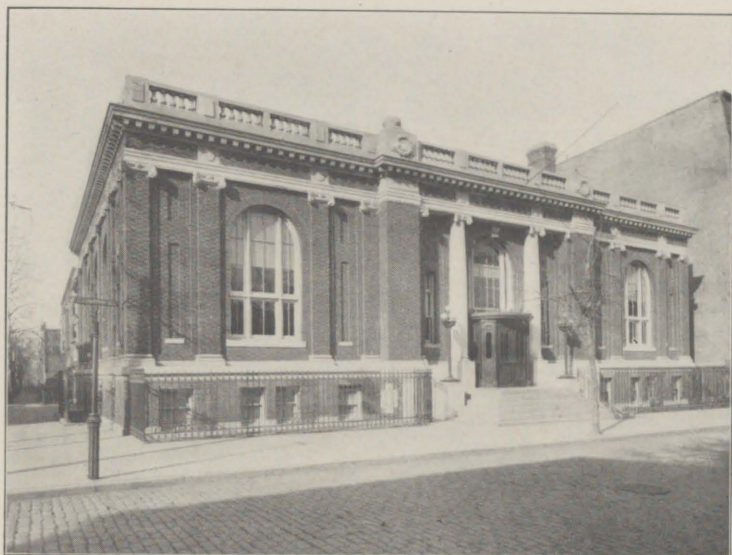
CHARGING DESK, DE KALB BRANCH



PLAN OF FIRST FLOOR



PLAN OF BASEMENT
DE KALB BRANCH



W. B. TUBBY, ARCHITECT, N. Y.

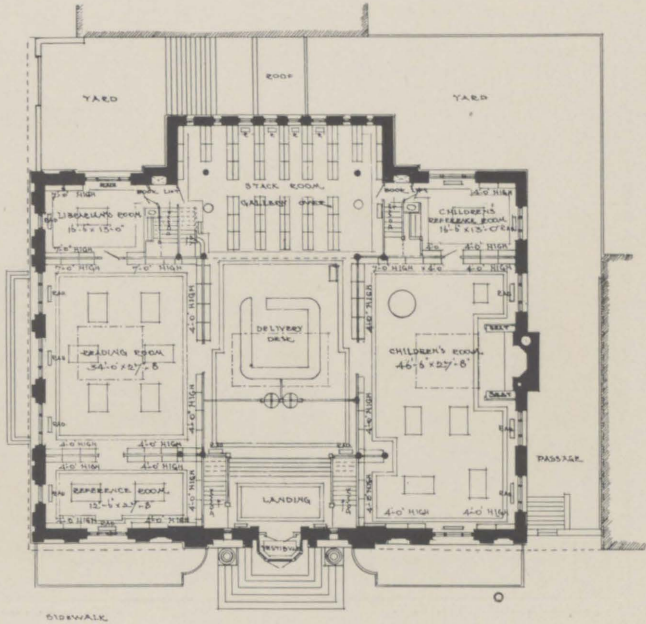
PHOTOS. BY FRANK PEARSALL

CARROLL PARK BRANCH, BROOKLYN



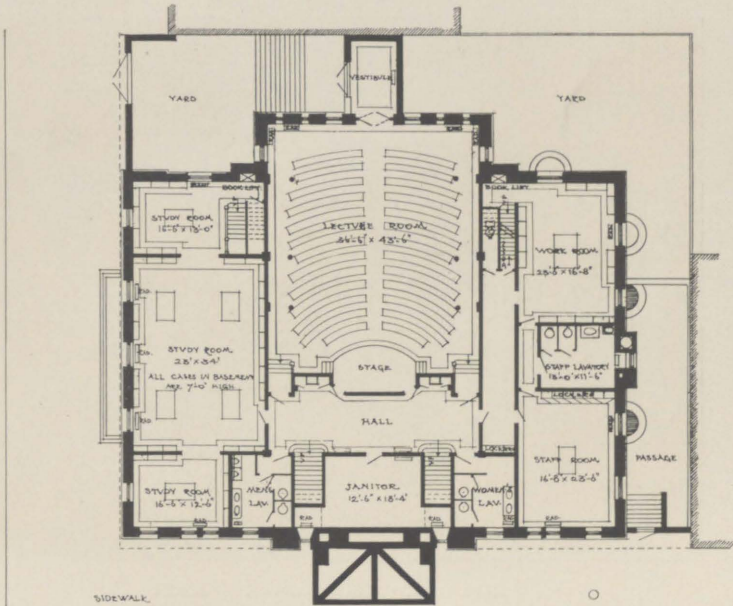
INTERIOR, CARROLL PARK BRANCH

UNION STREET



CLINTON STREET
MAIN FLOOR

UNION STREET

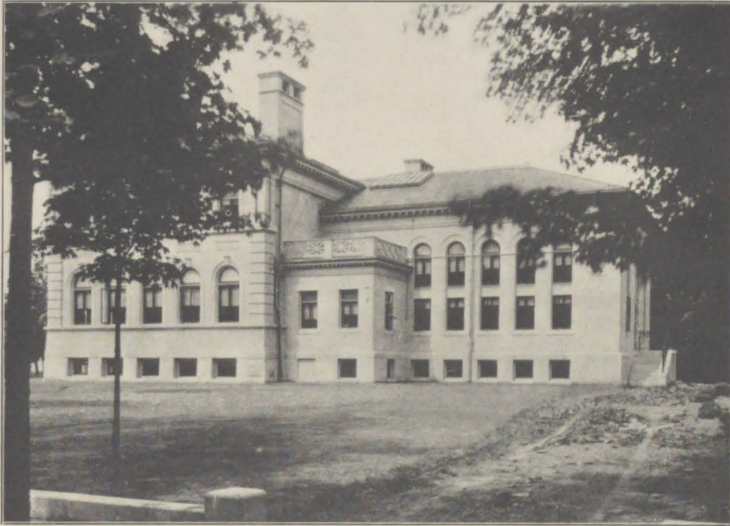


CLINTON STREET
BASEMENT
CARROLL PARK BRANCH

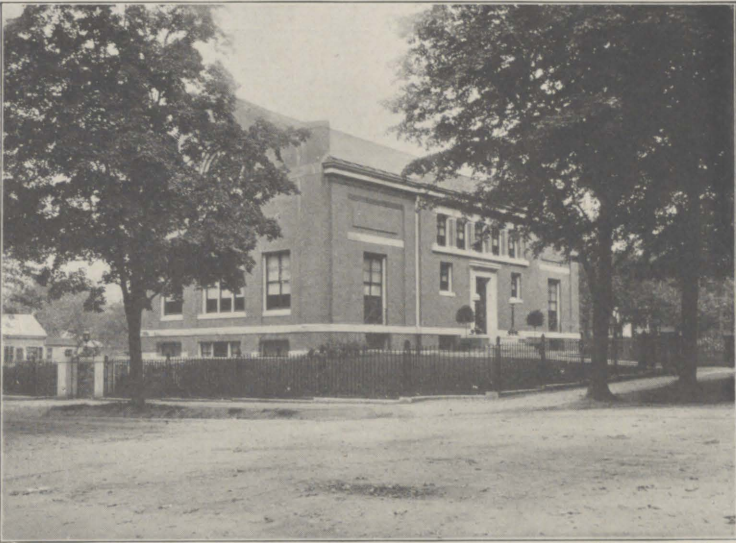


PENN VARNEY, ARCHITECT, LYNN, MASS.

MELROSE, MASSACHUSETTS



SIDE-VIEW OF THE MELROSE LIBRARY, SHOWING THE BOOK-STACK
IN THE REAR



WINSLOW & BIGELOW, ARCHITECTS, BOSTON

PHOTO, BY D. DIAS

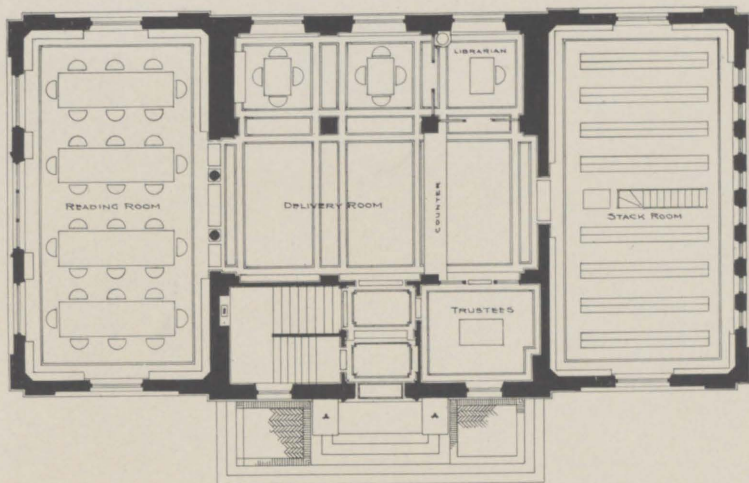
BIGELOW LIBRARY, CLINTON, MASS.



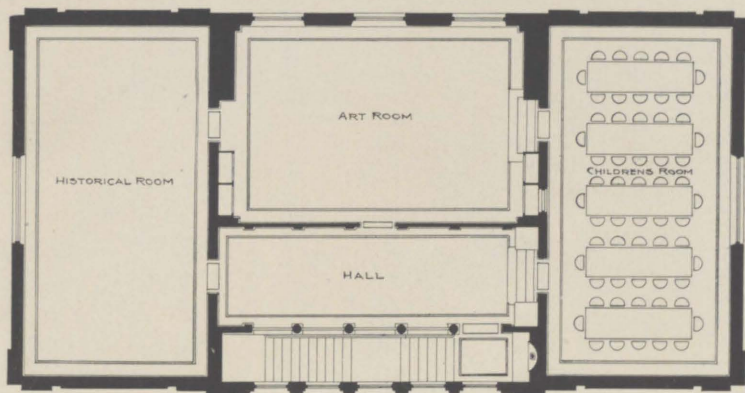
PHOTO, BY N. L. STEBBINS, BOSTON, FOR LIBRARY BUREAU

INTERIOR OF THE BIGELOW LIBRARY, SHOWING GUASTAVINO
FIRE-PROOF CONSTRUCTION

PLATE 32



-FIRST FLOOR PLAN-



-SECOND FLOOR PLAN-

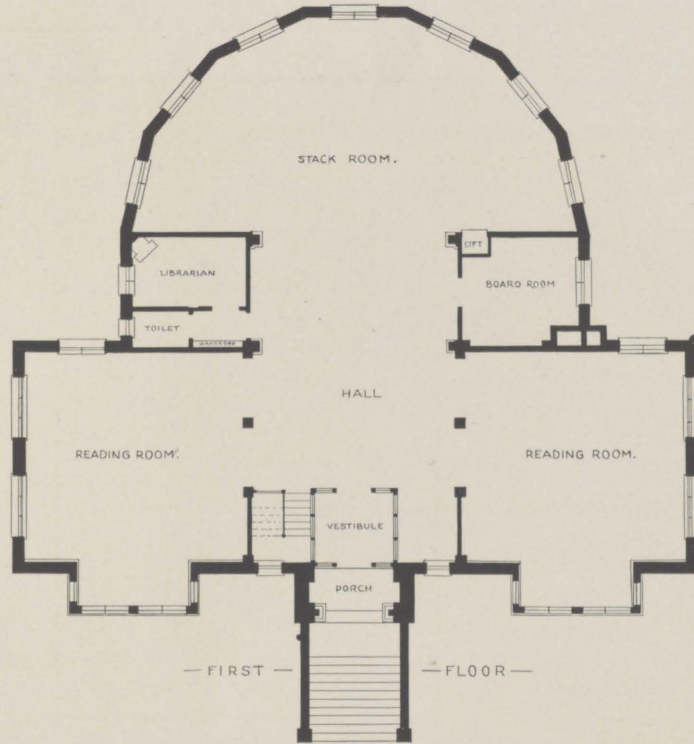
BIGELOW LIBRARY, CLINTON, MASS.



W. & G. AUDSLEY, ARCHITECTS, N. Y.

PHOTO. BY N. L. STEBBINS, BOSTON, FOR LIBRARY BUREAU

NORWALK, CONNECTICUT



NORWALK, CONNECTICUT

PHILADELPHIA BRANCHES

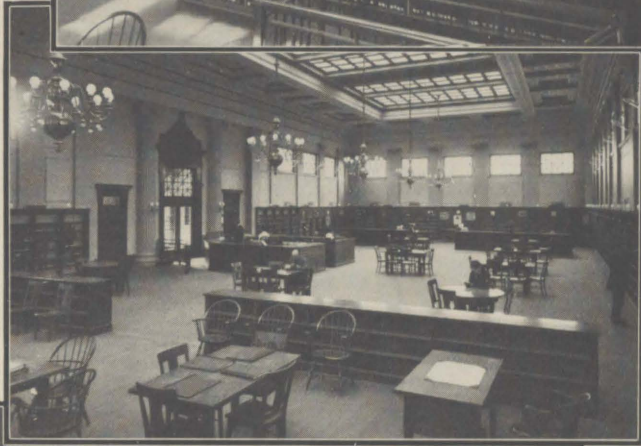


C. C. ZANTZINGER, ARCHITECT
G. W. & W. D. HEWITT, ARCHITECTS
LINDLEY JOHNSON, ARCHITECT

1. WEST PHILADELPHIA
2. LEHIGH AVENUE
3. TACONY

PLATE 36

INTERIORS OF PHILADELPHIA BRANCHES



1. WEST PHILADELPHIA
2. LEHIGH AVENUE
3. TACONY

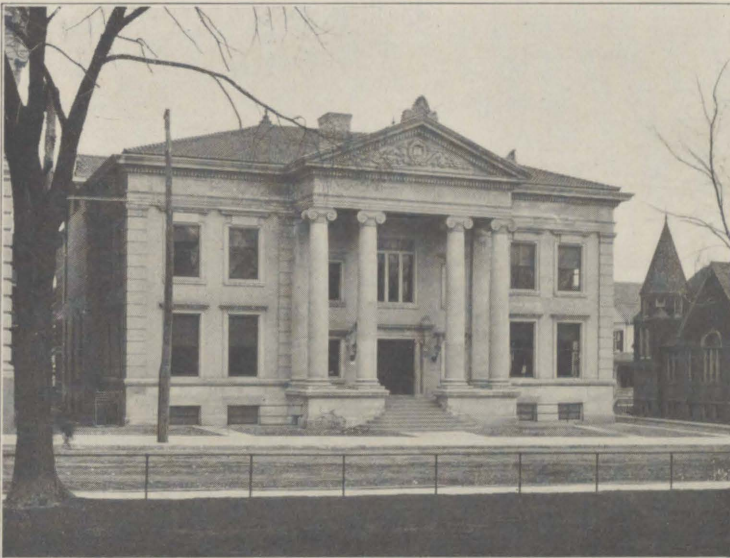
PHOTOS. BY WM. H. RAU



JAMES A. RANDALL, ARCHITECT

PHOTO. BY J. A. SEITZ

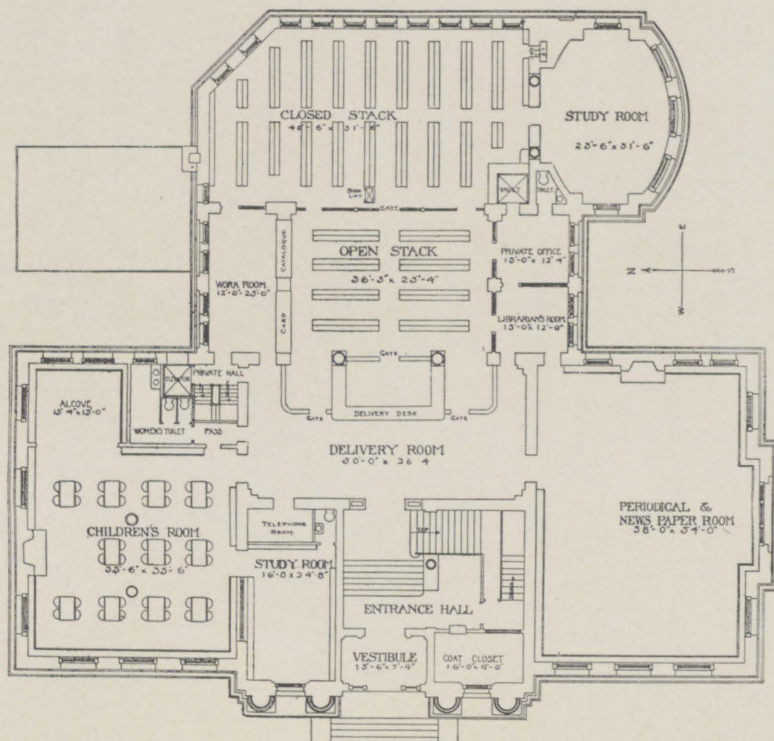
SYRACUSE, NEW YORK



S. O. & H. A. LACEY, ARCHITECTS

PHOTO. BY DETROIT PUBLISHING CO.

BINGHAMTON, NEW YORK



FIRST FLOOR PLAN, SYRACUSE PUBLIC LIBRARY



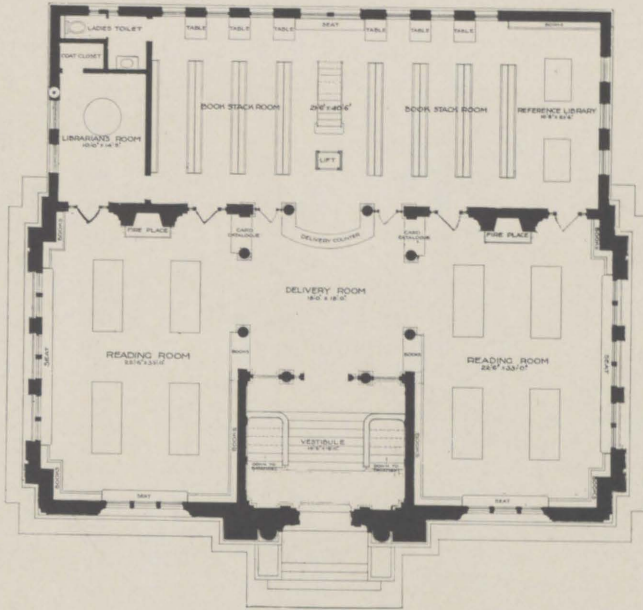
FULLER & PITCHER, ARCHITECTS, ALBANY

JOHNSTOWN, NEW YORK

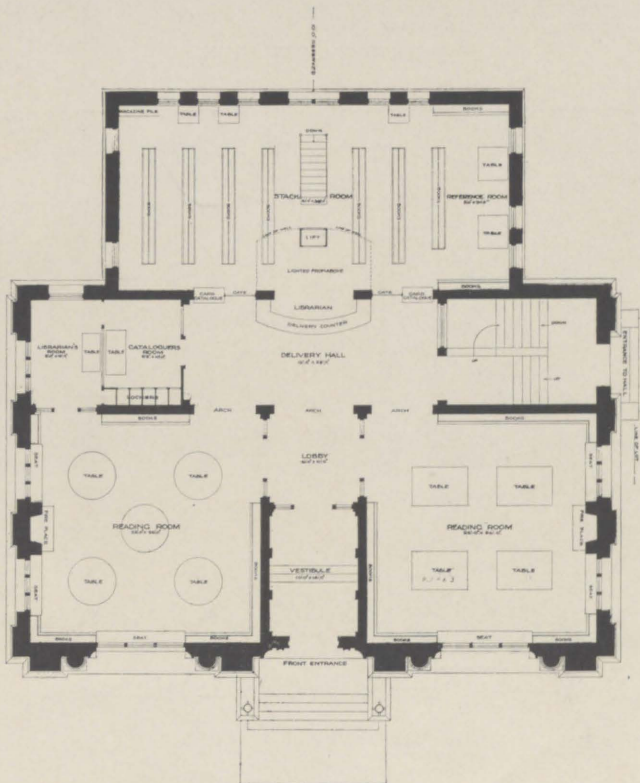


FULLER & PITCHER, ARCHITECTS, ALBANY

AMSTERDAM, NEW YORK



JOHNSTOWN, NEW YORK



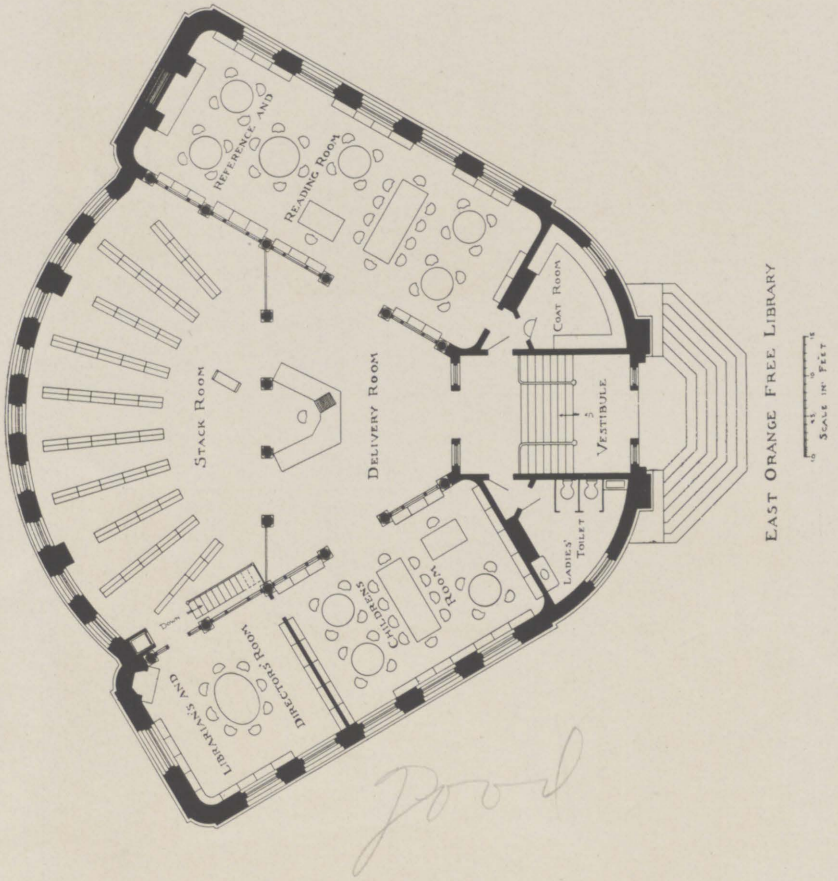
AMSTERDAM, NEW YORK



JARDINE, KENT & JARDINE, ARCHITECTS, N. Y.

PHOTOS. BY N. L. STEBBINS, BOSTON, FOR LIBRARY BUREAU

EAST ORANGE, NEW JERSEY



EAST ORANGE FREE LIBRARY

EAST ORANGE, NEW JERSEY

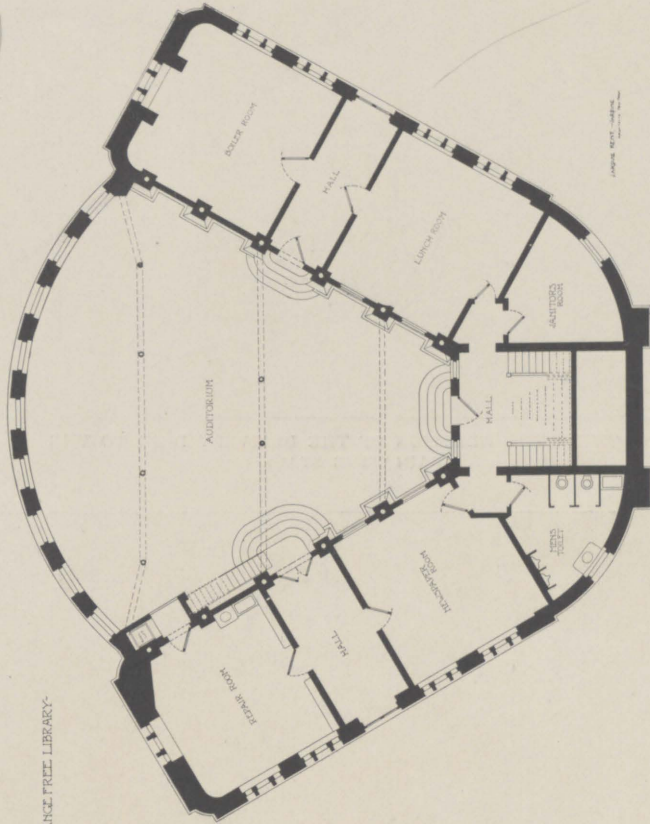


SHOWING THE RELATION OF THE DELIVERY DESK TO THE
RADIATING STACK



SHOWING INTERIOR OF LIBRARY BUREAU DELIVERY DESK, AND THE
ARRANGEMENT OF PILLARS AND GLASS SCREENS

Good



EAST ORANGE FREE LIBRARY

BASEMENT PLAN

ARCHITECT - J. H. W. ...

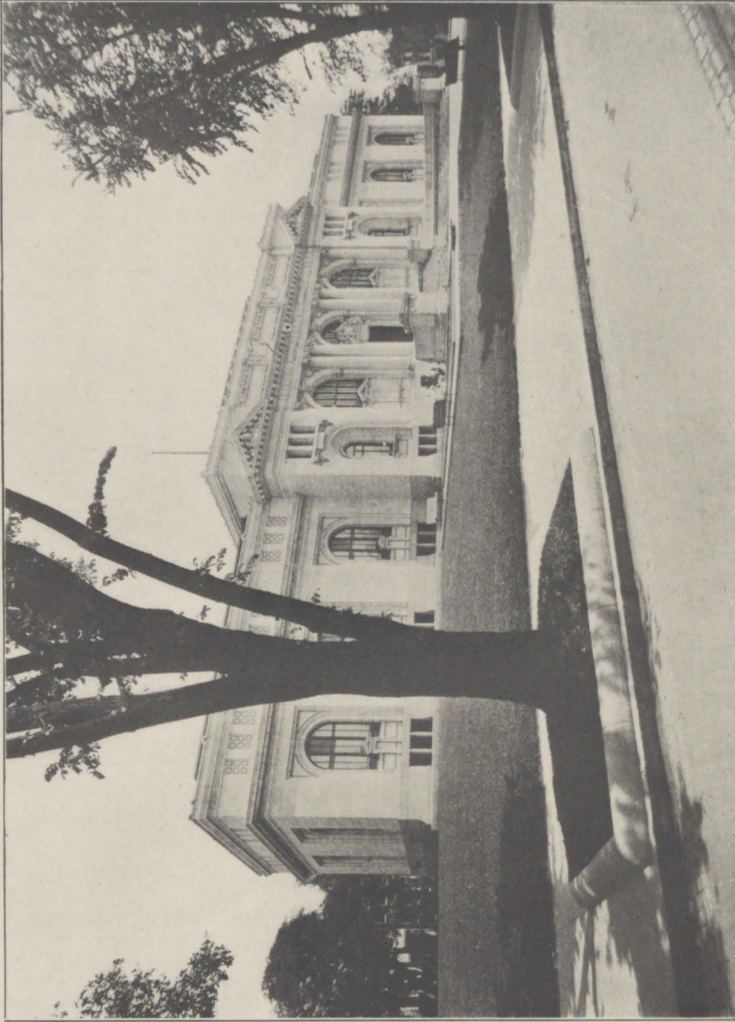
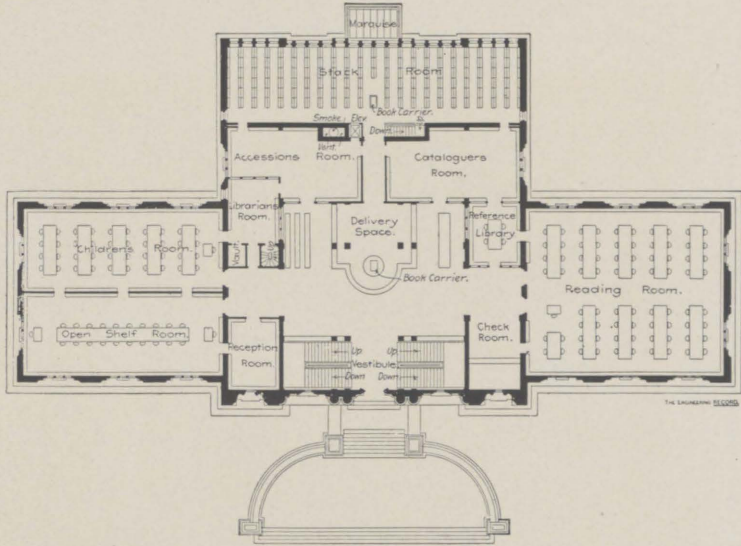


PHOTO BY FRANK M. BOTTLER

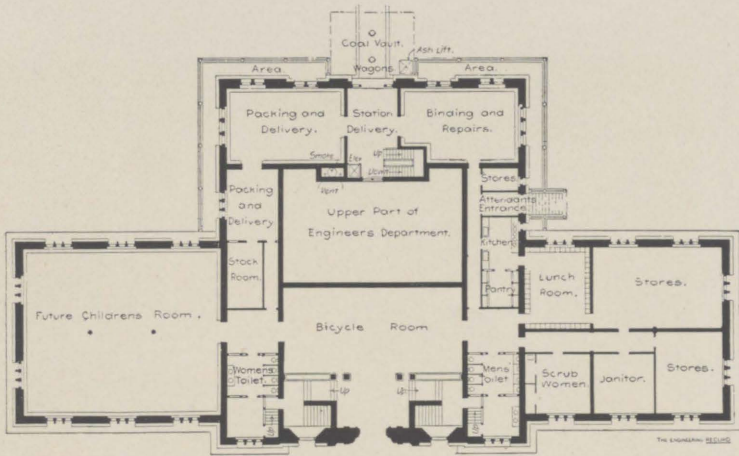
WASHINGTON, D. C.

ACKERMAN & ROSS, ARCHITECTS, NEW YORK

PLATE 46



FIRST FLOOR



BASEMENT

WASHINGTON, D. C.

WASHINGTON, D. C.



A LINE AT THE RETURN DESK



YOUNG PEOPLE'S ROOM

PLATE 48



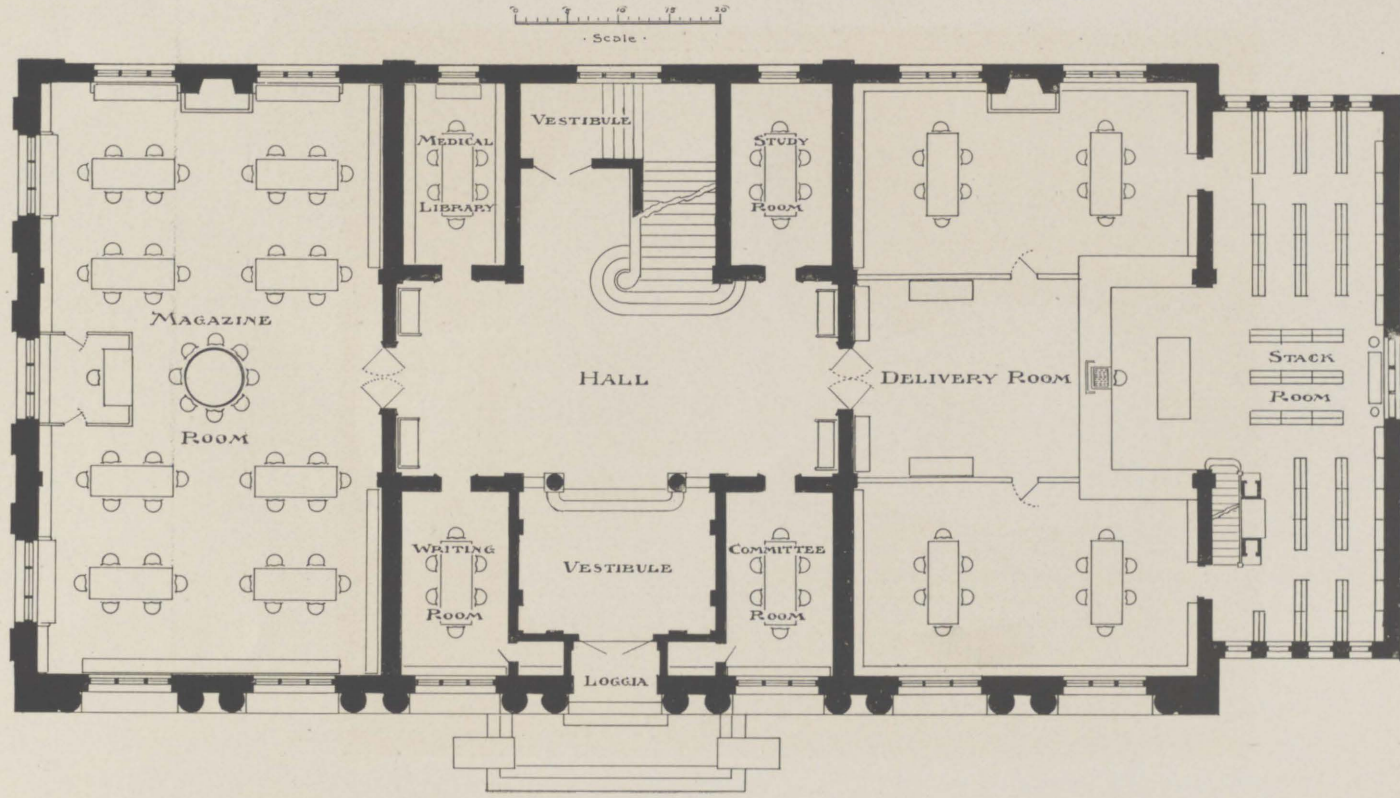
TRAVELLING LIBRARY WAGON FROM THE WASHINGTON COUNTY LIBRARY, HAGERSTOWN, MARYLAND



ACKERMAN & ROSS, ARCHITECTS, N. Y.

ATLANTA, GEORGIA

PHOTO. BY LIBRARY BUREAU



CARNEGIE LIBRARY, ATLANTA, GEORGIA



GAETANO TRENTANOVE, SCULPT

MARBLE BUST OF ANDREW CARNEGIE PRESENTED TO THE CARNEGIE
LIBRARY OF ATLANTA, GEORGIA, BY THE SCHOOL CHILDREN
OF THAT CITY

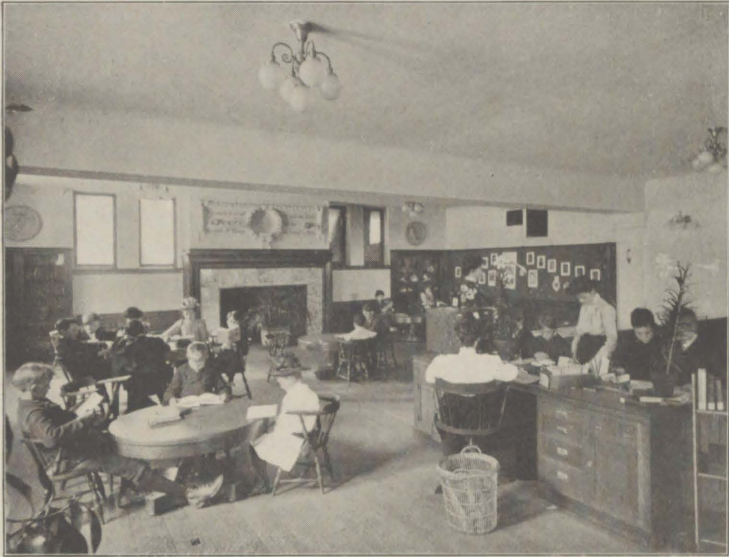


PHOTO. BY LIBRARY BUREAU

CHILDREN'S ROOM, CARNEGIE LIBRARY, ATLANTA



CARNEGIE TRAVELLING LIBRARIES CARRIED BY THE
SEABOARD AIR LINE



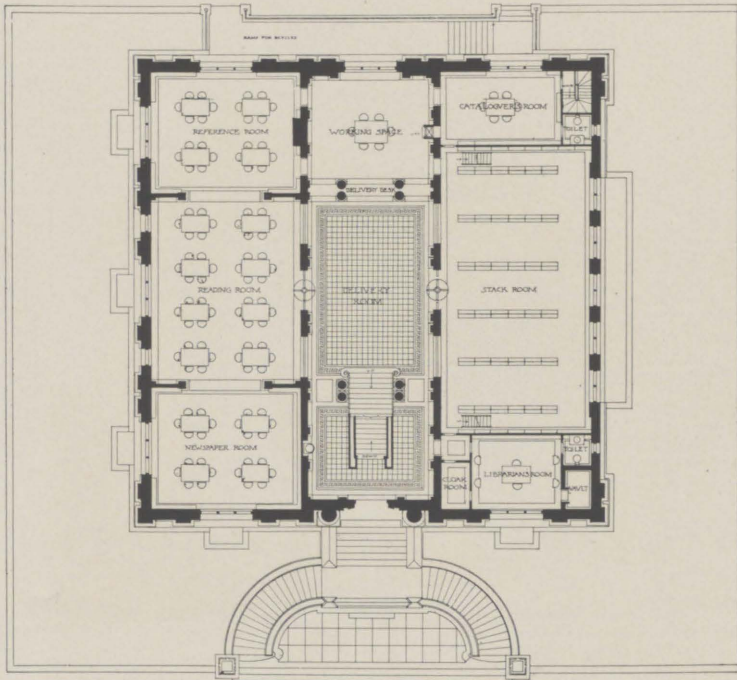
ACKERMAN & ROSS, ARCHITECTS, N. Y.

PHOTOS. BY H. O. FULLER

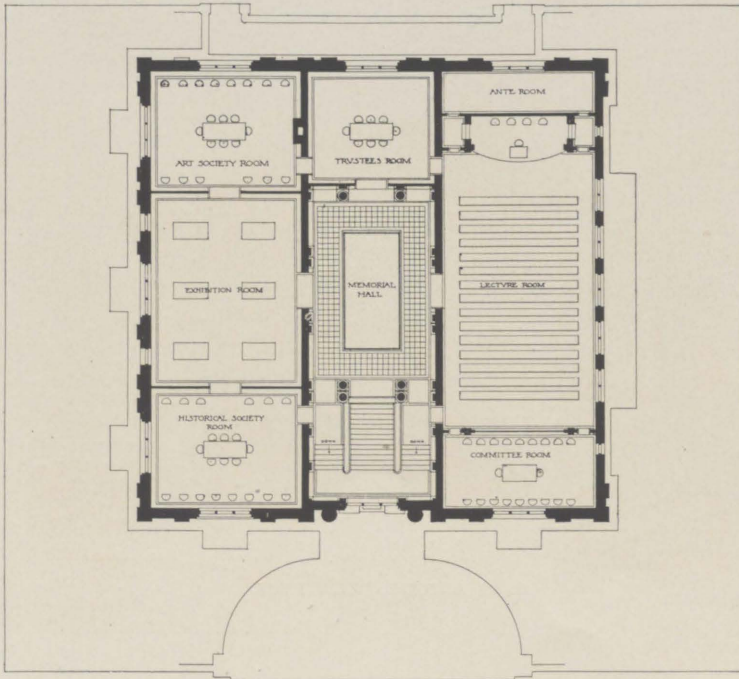
NASHVILLE, TENNESSEE



LOBBY AND DELIVERY DESK



FIRST FLOOR



SECOND FLOOR



R. H. HUNT, ARCHITECT

PHOTO. BY A. W. JUDD

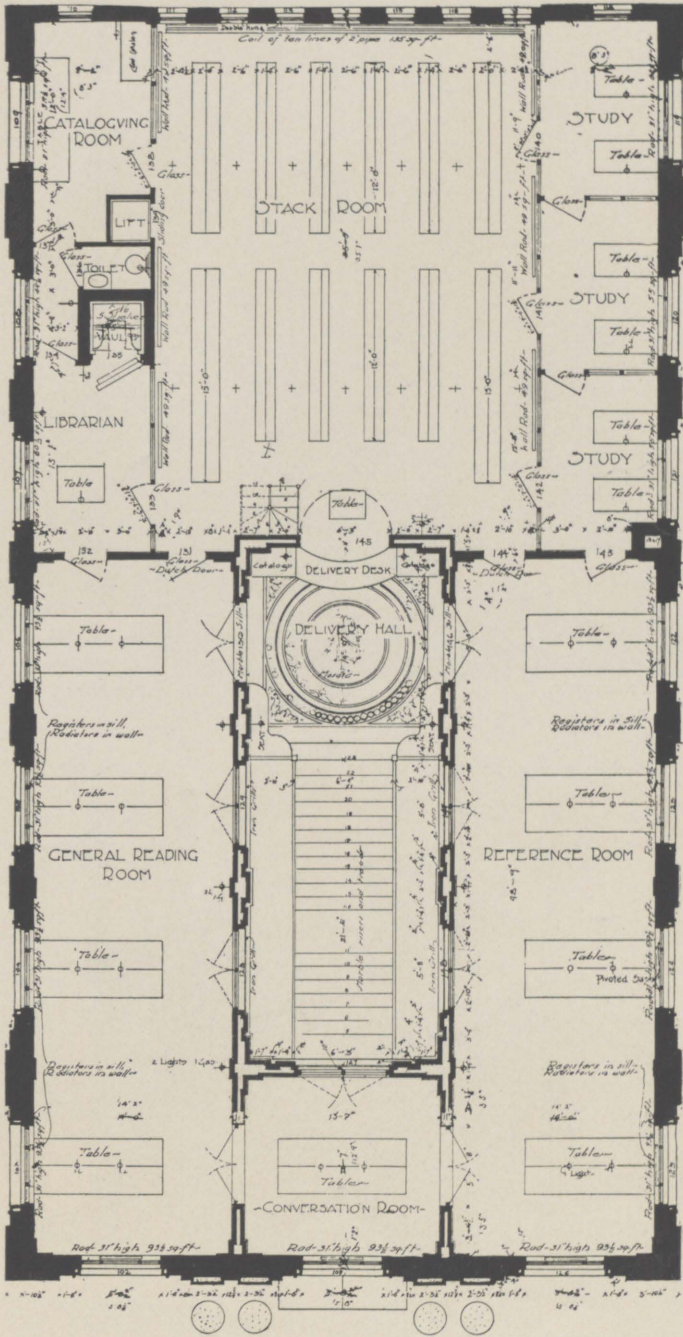
CHATTANOOGA, TENNESSEE



HERBERT D. HALE AND HENRY G. MORSE, ASSOCIATE ARCHITECTS

PHOTO. BY FABER

NORFOLK, VIRGINIA



MAIN FLOOR
NORFOLK, VIRGINIA



H. J. KLUTHO, ARCHITECT

JACKSONVILLE, FLORIDA

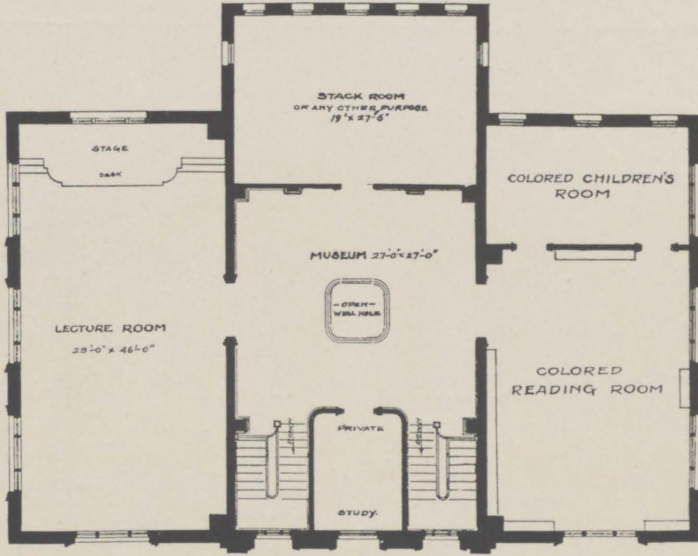
PHOTO. BY MOORE



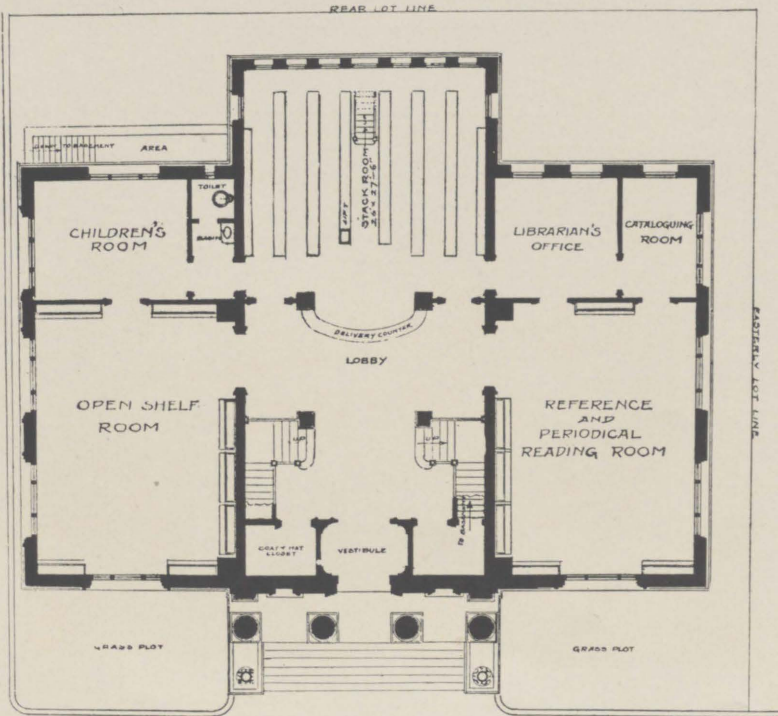
READING ROOM (for colored patrons)

PHOTO. BY HAVENS

PLATE 58

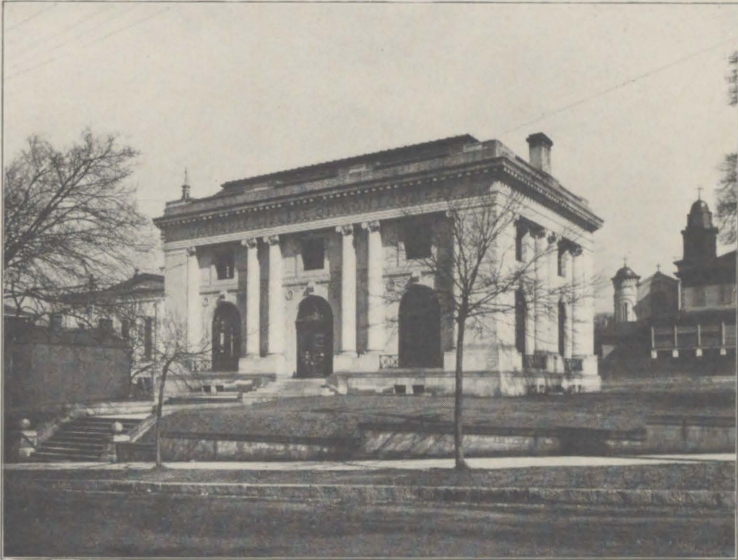


SECOND FLOOR



FIRST FLOOR

JACKSONVILLE, FLORIDA



YORK & SAWYER, ARCHITECTS

Copyright, 1906, by DETROIT PUBLISHING COMPANY

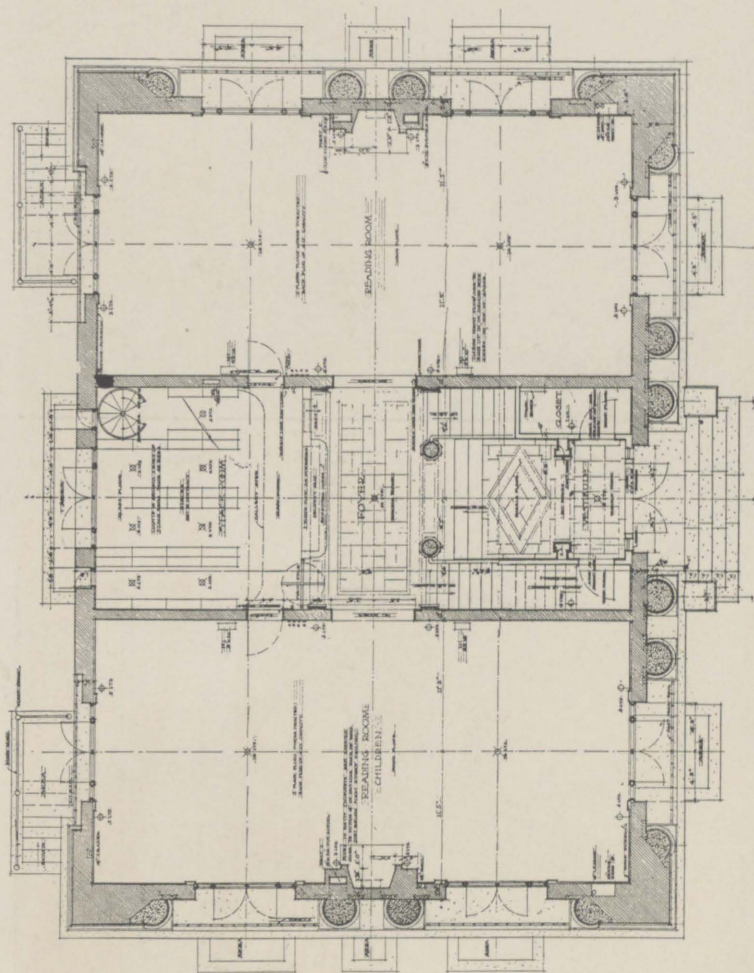
MONTGOMERY, ALABAMA



R. R. TAYLOR, ARCHITECT

PHOTO. BY MISS FRANCES B. JOHNSTON

LIBRARY OF TUSKEGEE INSTITUTE, TUSKEGEE, ALABAMA



FIRST FLOOR PLAN
MONTGOMERY, ALABAMA



ALDEN & HARLOW, ARCHITECTS

PHOTO. BY R. W. JOHNSTON

CARNEGIE INSTITUTE, PITTSBURG

Showing the additions of 1904-1907

PLATE 62

WORK WITH THE CHILDREN OF PITTSBURG



1. Some West End Patrons of the Library

2. A Story Hour at the Central Library

3. A Boys' Book-club and Meeting-place

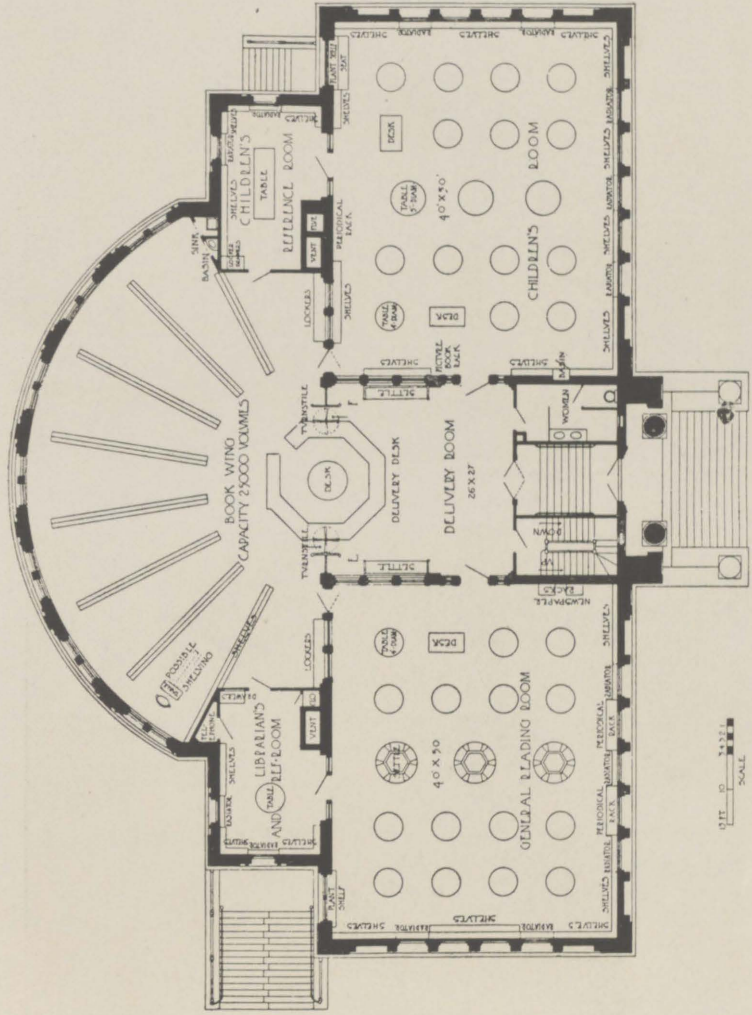


ALDEN & HARLOW, ARCHITECTS, PITTSBURG

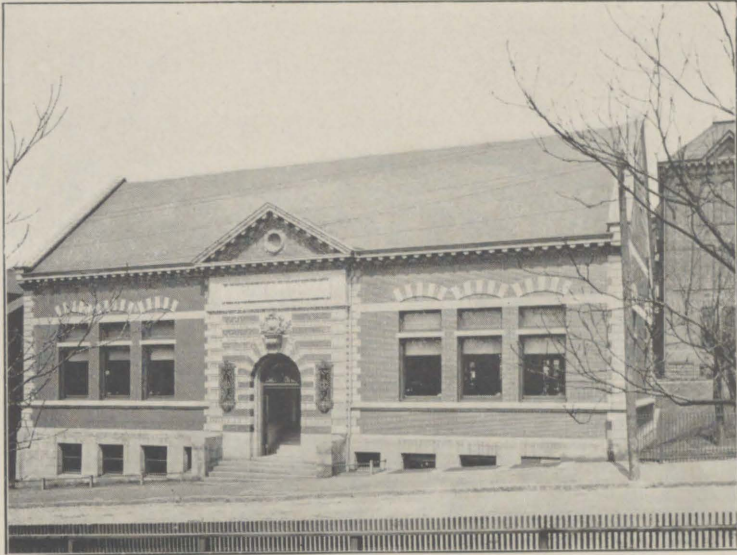
EAST LIBERTY BRANCH, PITTSBURG



READING ROOM



EAST LIBERTY BRANCH, PITTSBURGH



ALDEN & HARLOW, ARCHITECTS, PITTSBURG

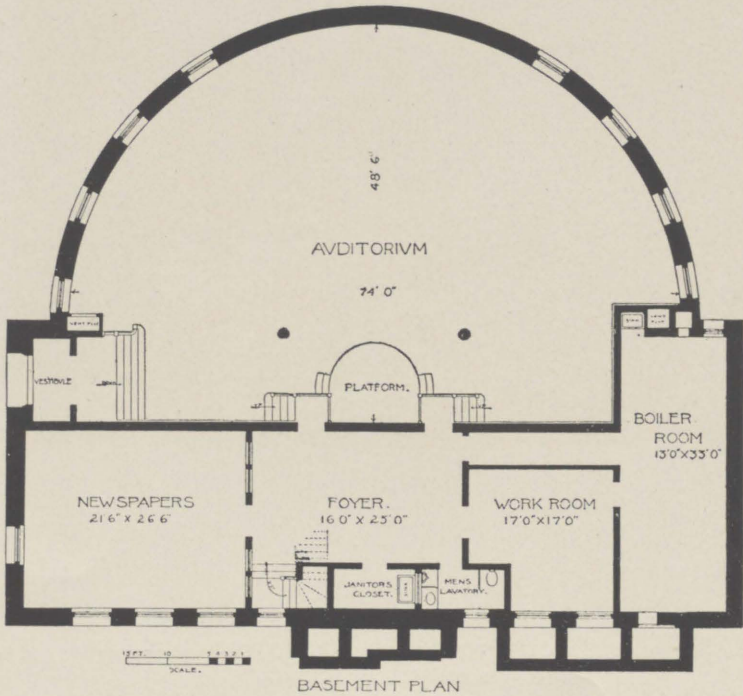
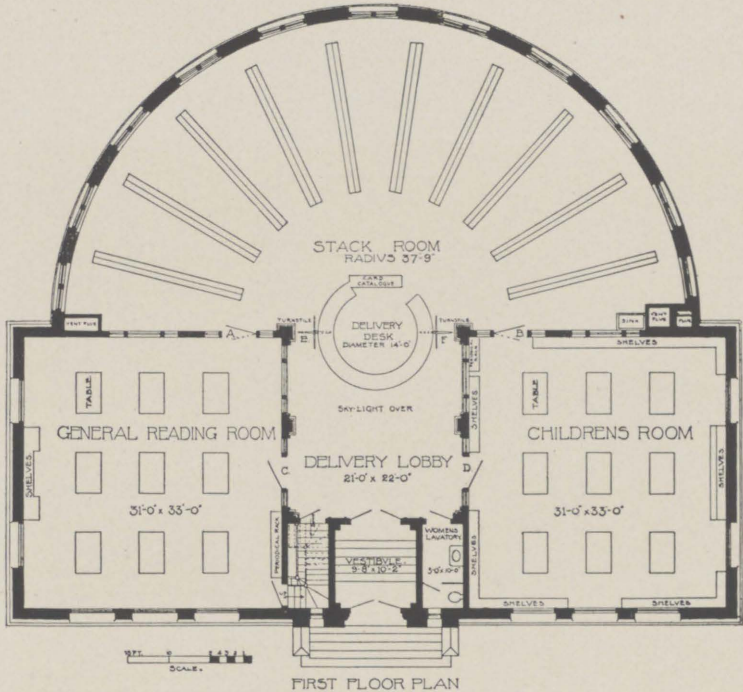
PHOTO. BY R. W. & H. E. JOHNSTON

LAWRENCEVILLE BRANCH, PITTSBURG



CHAUTAUQUA PHOTO. COMPANY

LIBRARY CLUB WORK AMONG THE COLORED CHILDREN
SOHO HILL, PITTSBURG

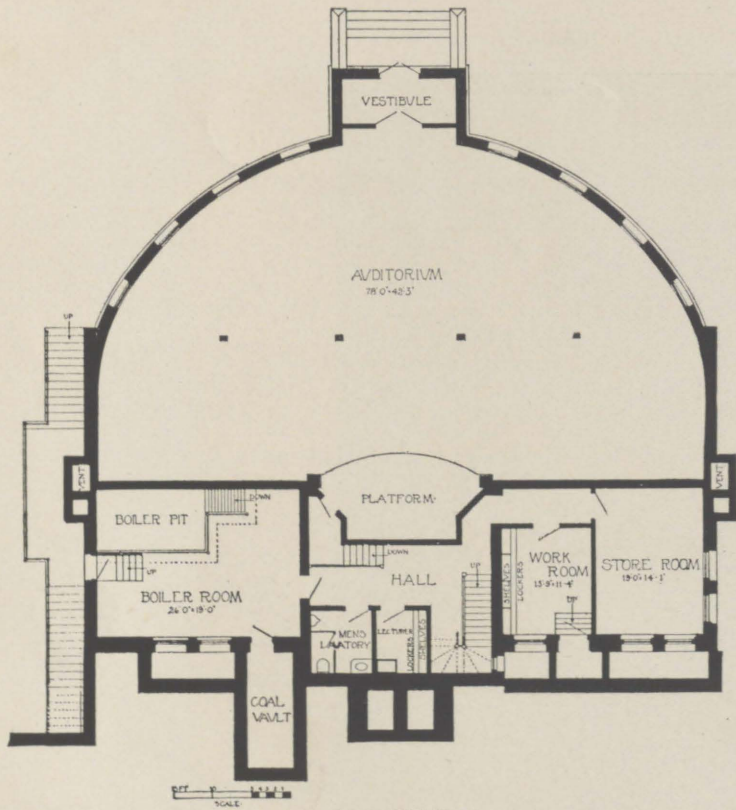


LAWRENCEVILLE BRANCH, PITTSBURG

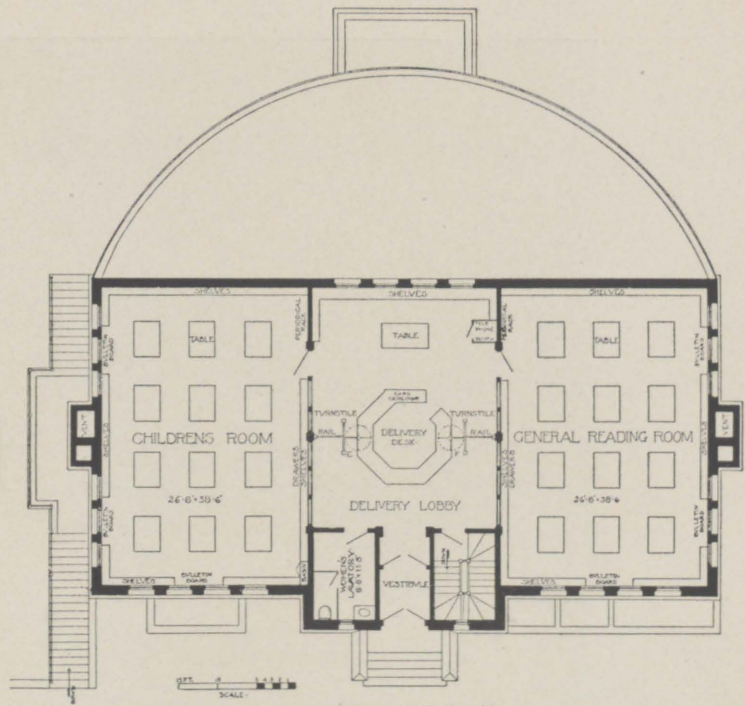


PHOTO. BY R. W. & H. E. JOHNSTON

CHILDREN'S ROOM IN THE HAZELWOOD BRANCH, PITTSBURG

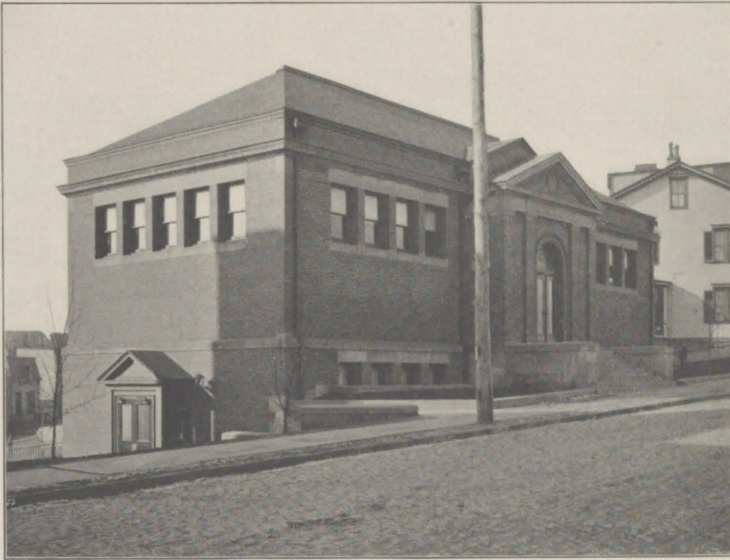


BASEMENT PLAN



FIRST FLOOR PLAN

HAZELWOOD BRANCH, PITTSBURG



ALDEN & HARLOW, ARCHITECTS, PITTSBURG

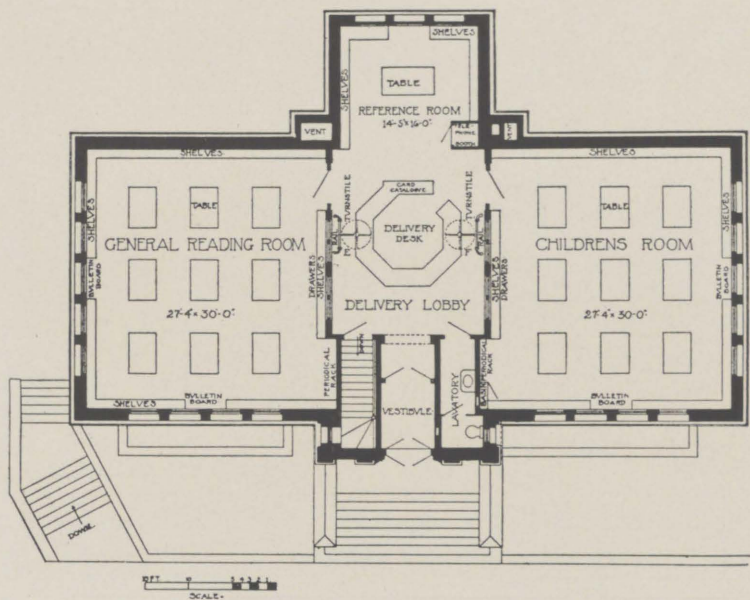
PHOTO. BY R. W. & H. E. JOHNSTON

MT. WASHINGTON BRANCH, PITTSBURG

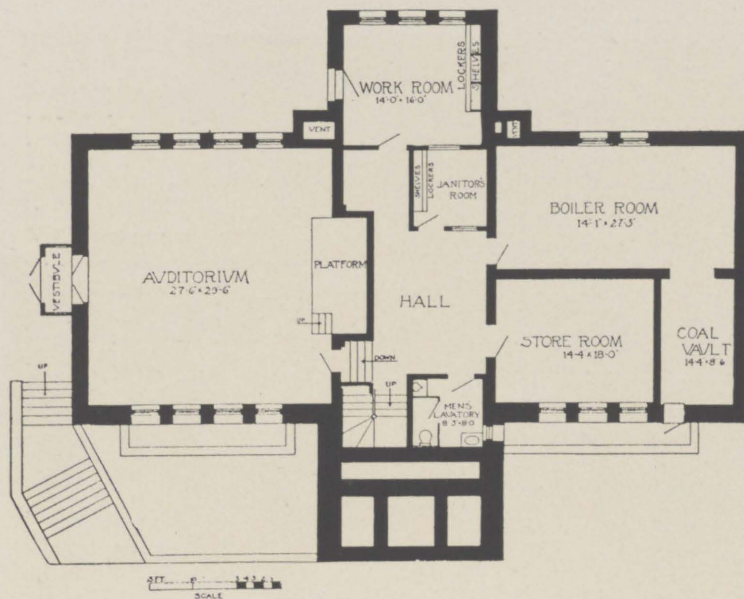


CHAUTAUQUA PHOTO. COMPANY

LIBRARY CLUB WORK IN THE JEWISH QUARTER, PITTSBURG



FIRST FLOOR PLAN



BASEMENT PLAN

MT. WASHINGTON BRANCH, PITTSBURG



ALDEN & HARLOW, ARCHITECTS, PITTSBURG

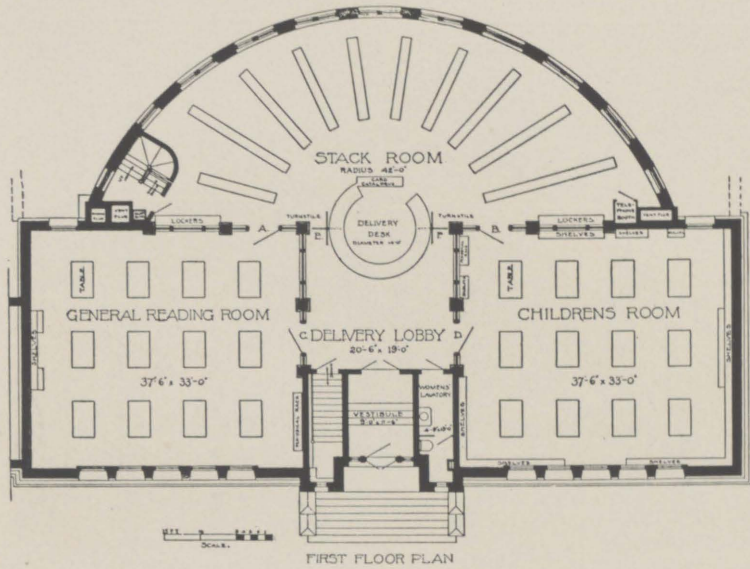
PHOTO. BY R. W. & H. E. JOHNSTON

WYLIE AVENUE BRANCH, PITTSBURG

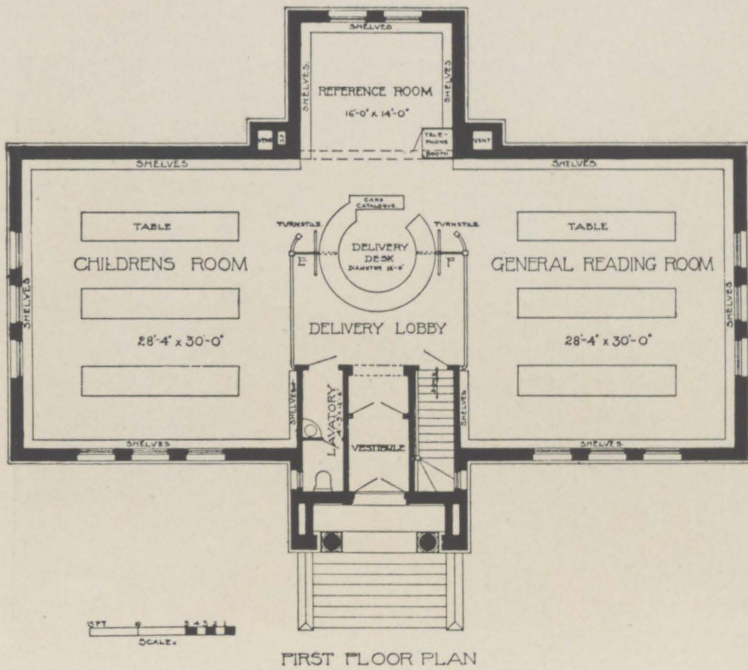


CHAUTAQUA PHOTO. COMPANY

HOME LIBRARY GROUP, PITTSBURG



WYLIE AVENUE BRANCH, PITTSBURG



WEST END BRANCH, PITTSBURG



MCLAUGHLIN & GILMORE, ARCHITECTS, CINCINNATI

WALNUT HILLS BRANCH, CINCINNATI

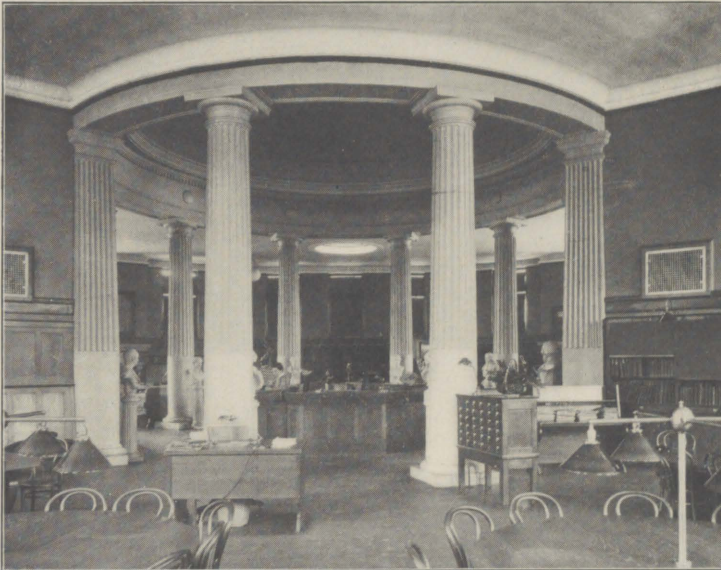


READING ROOM



CHARLES MORRIS, ARCHITECT (associated with Lehman & Schmidt)

BROADWAY BRANCH, CLEVELAND



ROTUNDA OF THE BROADWAY BRANCH

Glass screens have recently been erected between all the columns excepting those in front of the entrance from Wilson Avenue

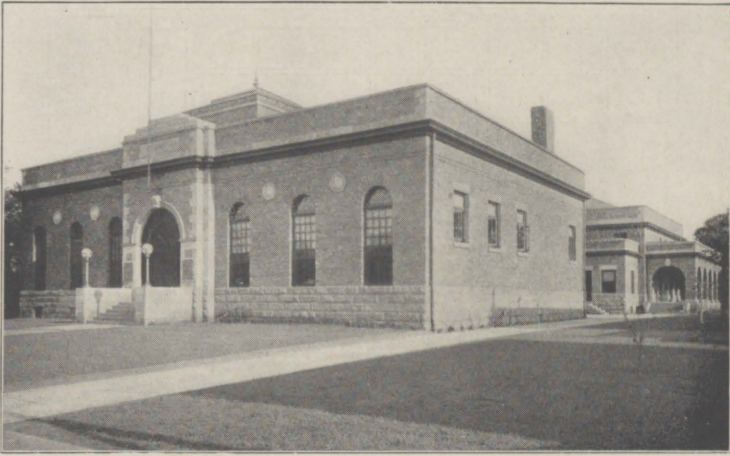
PLATE 76



CORNER OF CHILDREN'S ROOM IN BROADWAY BRANCH, CLEVELAND



HOME LIBRARY GROUP, CLEVELAND



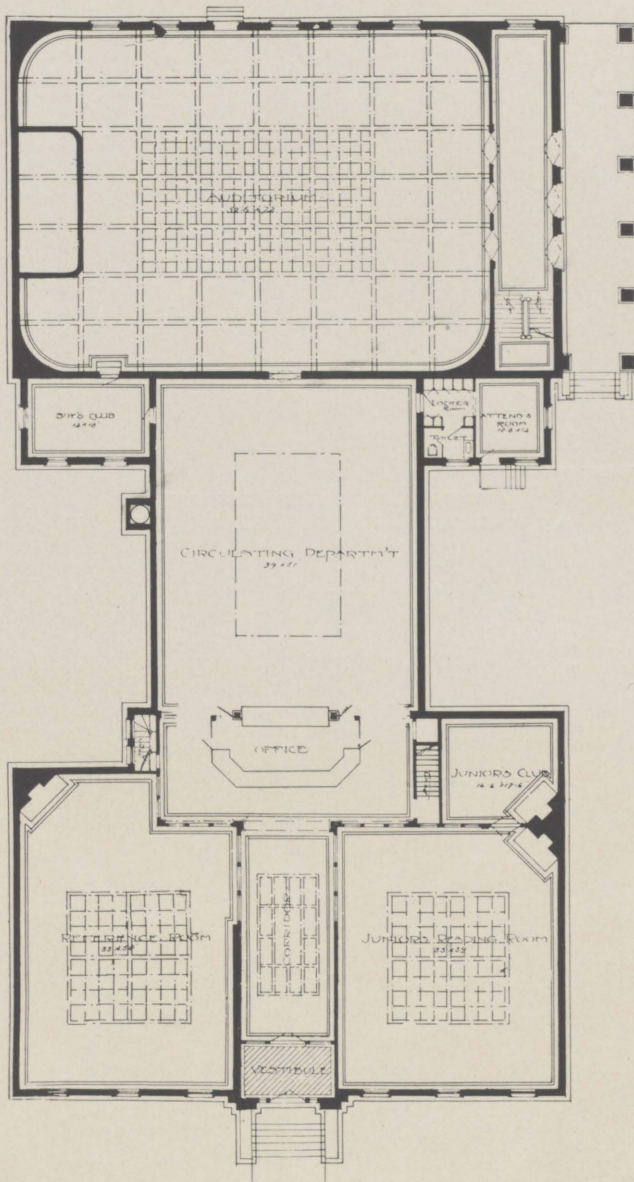
W. R. WATTERSON, ARCHITECT

WOODLAND BRANCH, CLEVELAND
A REMODELLED AND MUCH ENLARGED BUILDING



PHOTO. BY N. L. STEBBINS, BOSTON, MASS.

DELIVERY DESK AND READING ROOM



WOODLAND BRANCH—FLOOR PLAN

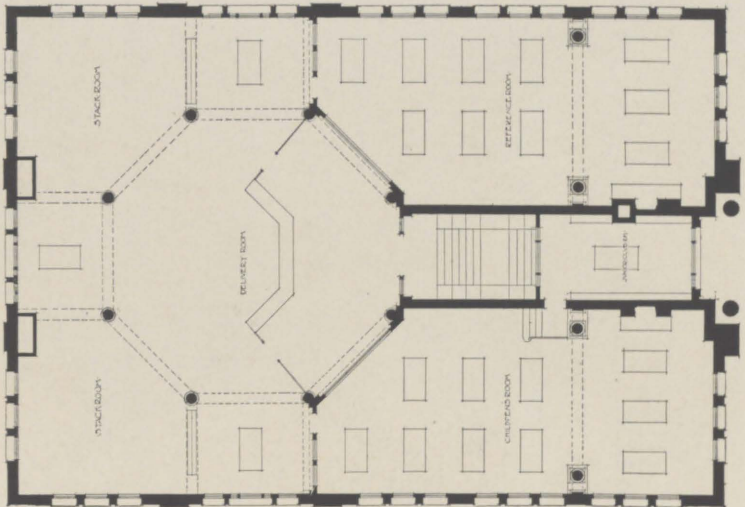
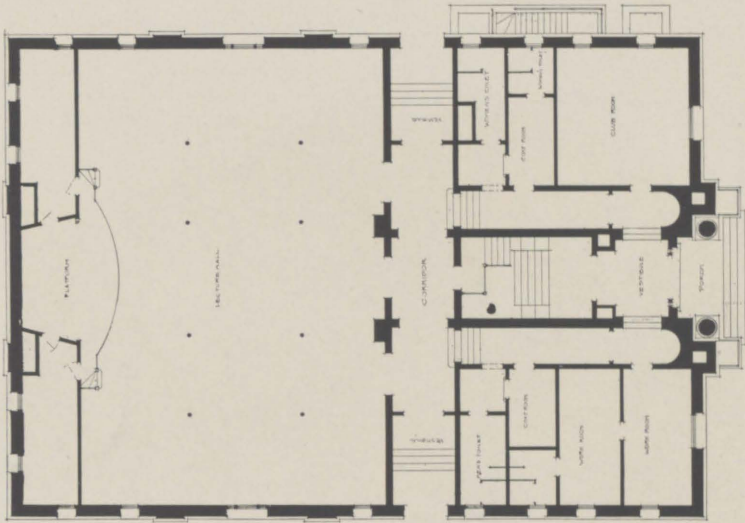


EDWARD L. TILTON, ARCHITECT, NEW YORK

MILES PARK BRANCH, CLEVELAND



CIRCULATING DEPARTMENT



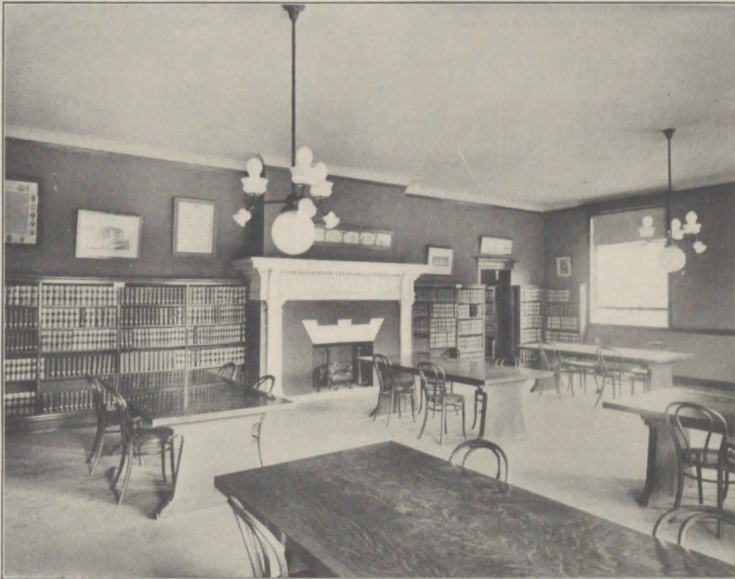
MILES PARK BRANCH, CLEVELAND



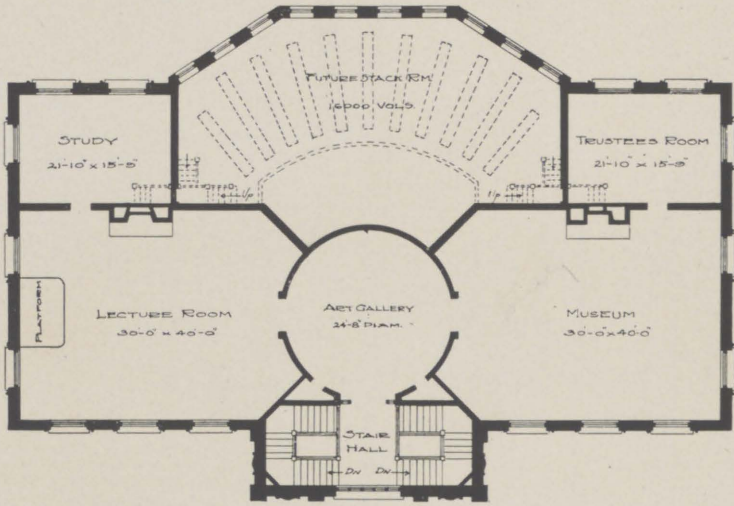
PATTON & MILLER, ARCHITECTS, CHICAGO

PHOTOS. BY N. L. STEBBINS, BOSTON, MASS.

PORT HURON, MICHIGAN

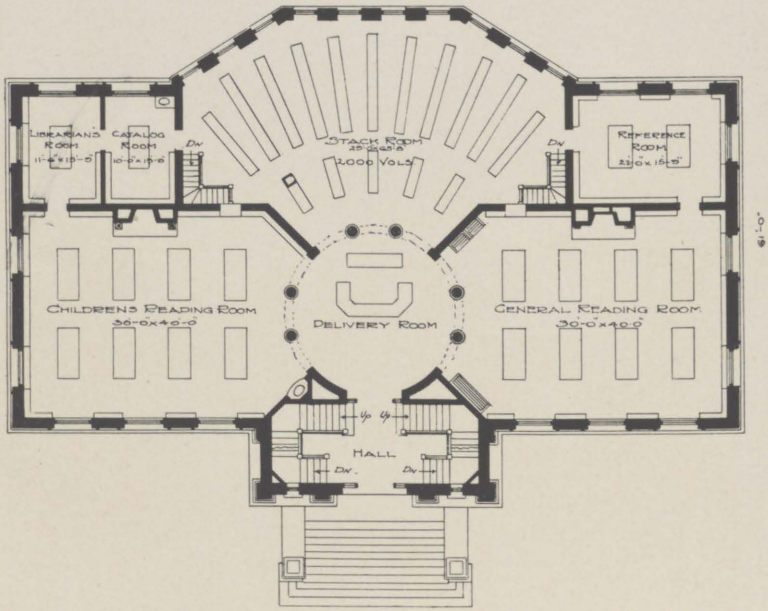


READING ROOM



SECOND FLOOR PLAN

105'-0"



FIRST FLOOR PLAN
PUBLIC LIBRARY
FRET HURON - MICH.

Good



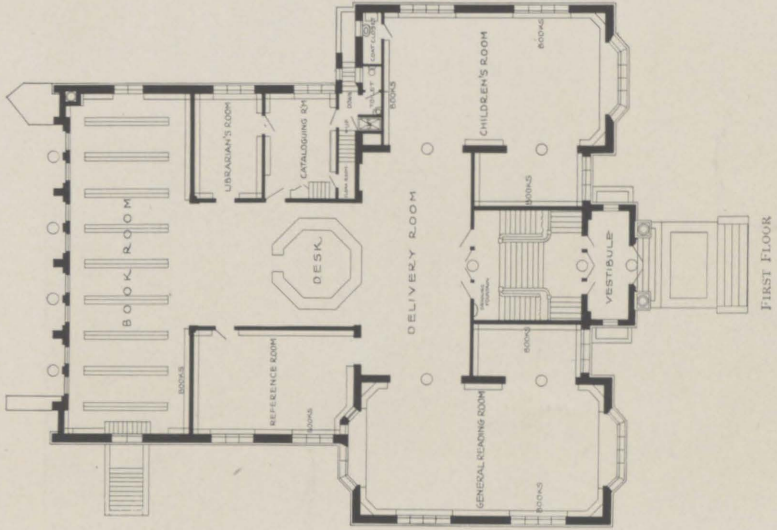
FRANK MILES DAY & BROTHER, ARCHITECTS, PHILA., PA.

PHOTOS. BY J. C. SCHUBERT

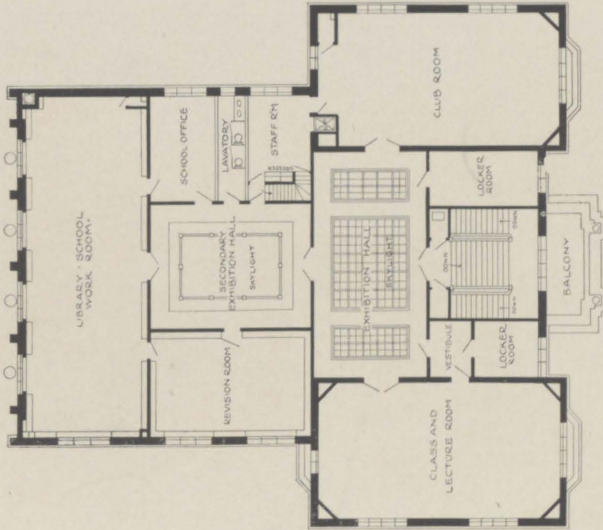
MADISON, WISCONSIN



READING ROOM



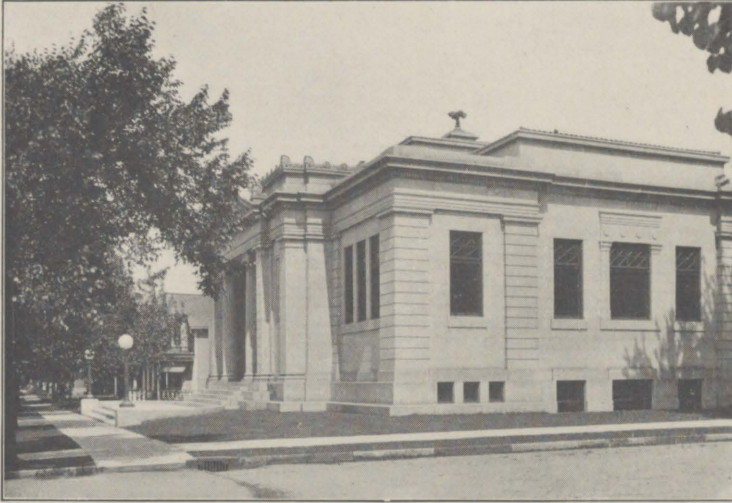
FIRST FLOOR



SECOND FLOOR

MADISON, WISCONSIN

Boyer



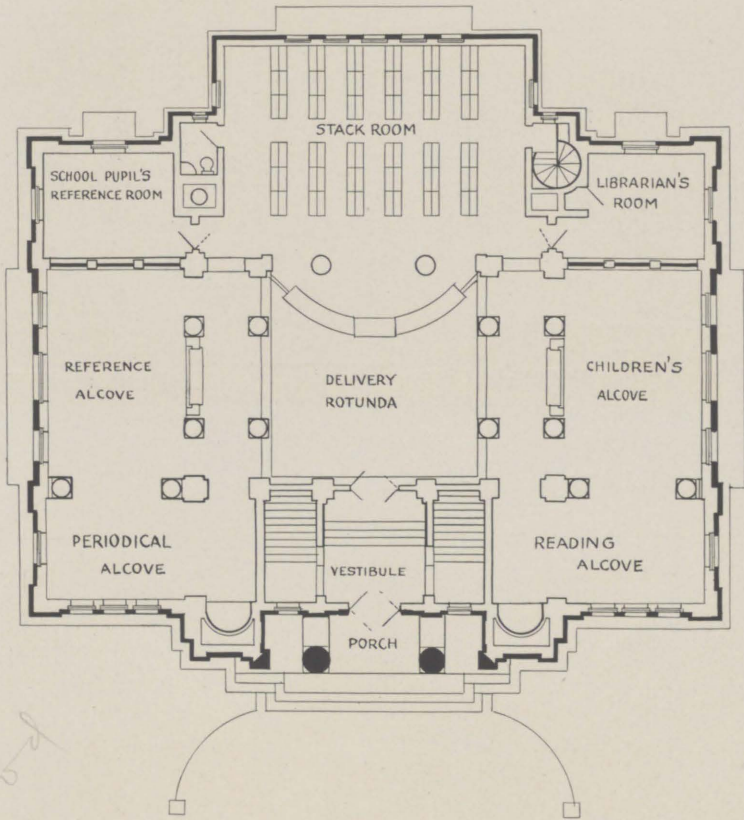
WING & MAHURIN, ARCHITECTS, FORT WAYNE

PHOTOS, BY E. M. MUDGE

ELKHART, INDIANA

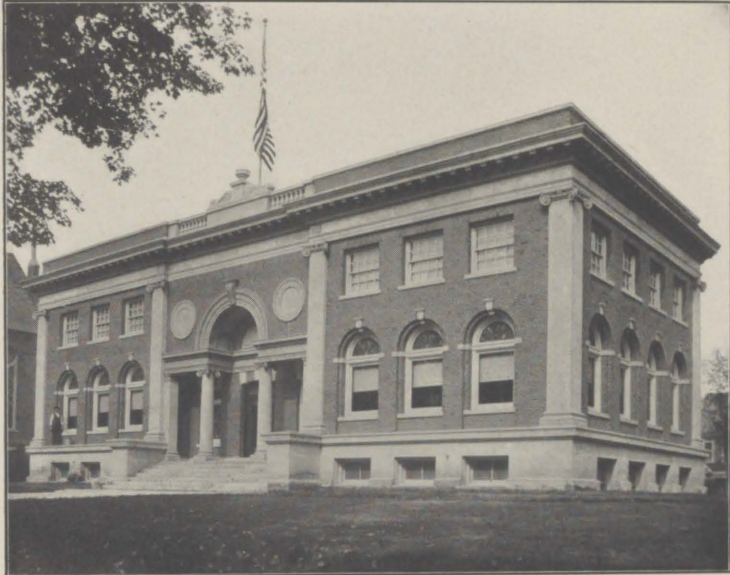


ENTRANCE TO ELKHART LIBRARY



Good

ELKHART, INDIANA



PATTON & MILLER, ARCHITECTS, CHICAGO

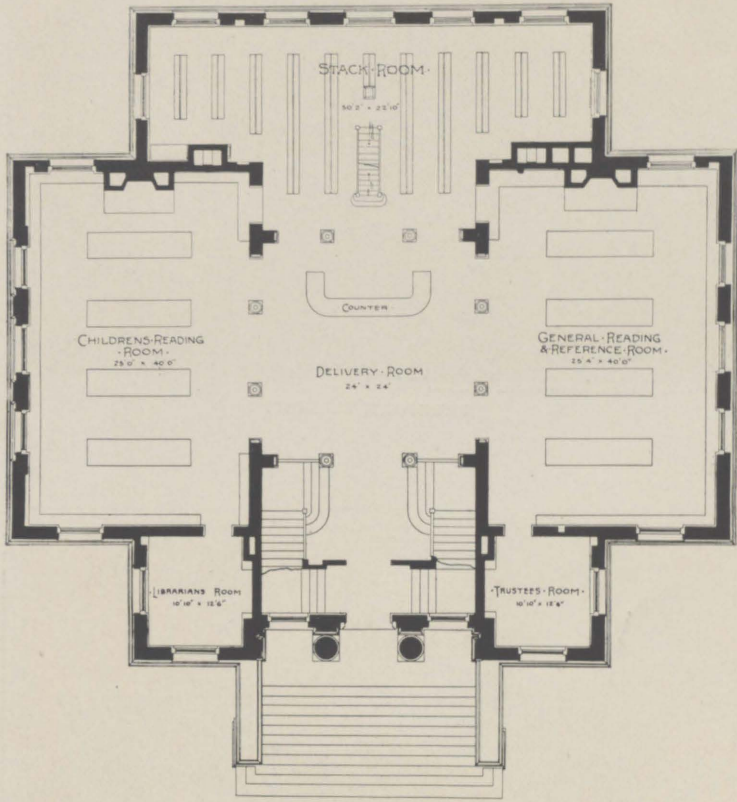
FREEPORT, ILLINOIS



PATTON & MILLER, ARCHITECTS, CHICAGO

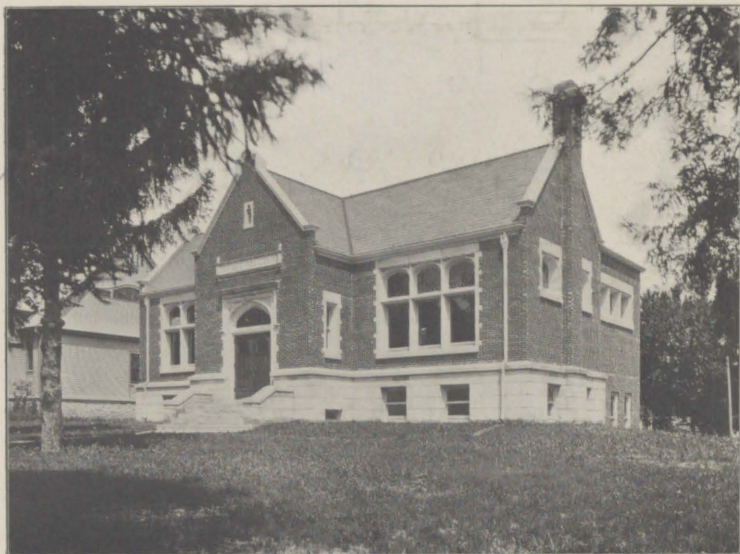
PHOTO, BY J. L. ARTHUR

STREATOR, ILLINOIS



· PUBLIC · LIBRARY · STREATOR · ILL ·

\$10,000



CLAUDE & STARCK, ARCHITECTS, MADISON

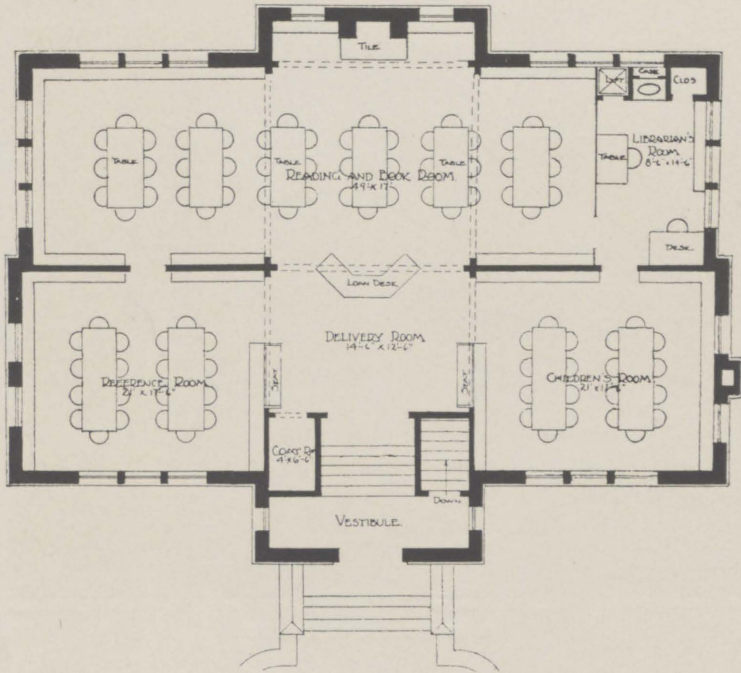
PHOTOS. BY J. C. SCHUBERT, MADISON

DARLINGTON, WISCONSIN

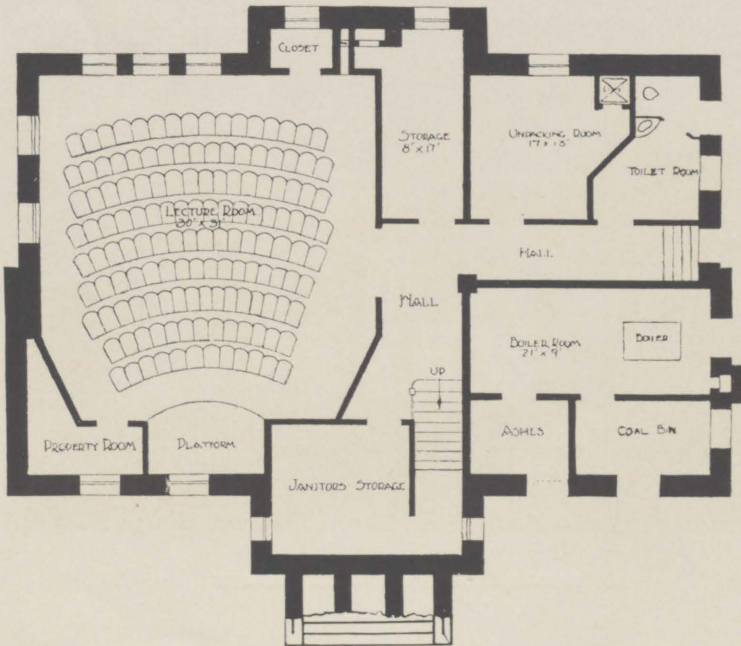


INTERIOR OF DARLINGTON LIBRARY

PLATE 90

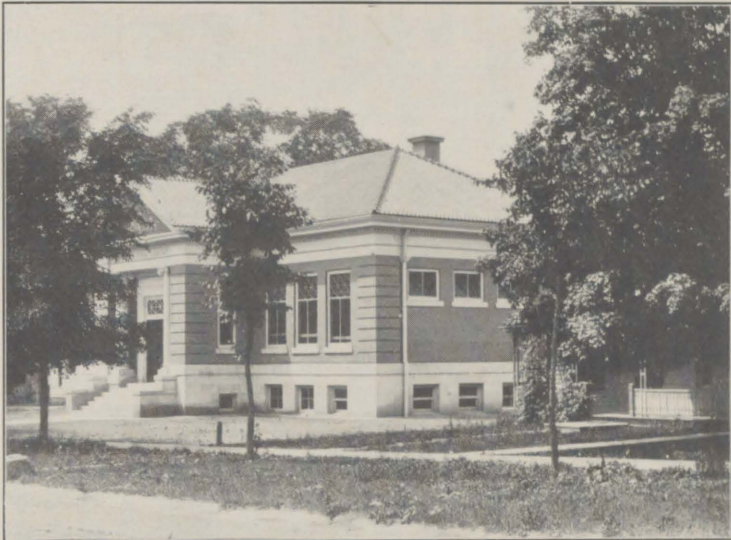


FIRST FLOOR



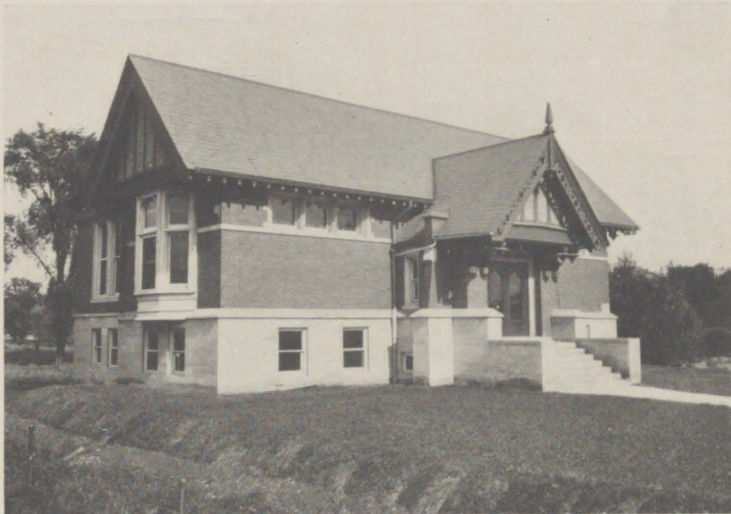
BASEMENT

DARLINGTON, WISCONSIN



CLAUDE & STARCK, ARCHITECTS, MADISON, WIS.

BARABOO, WISCONSIN

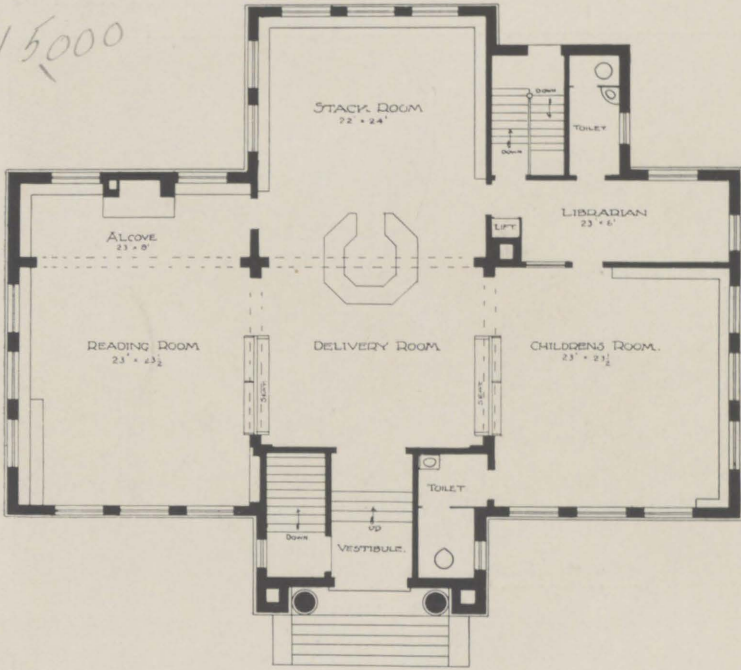


CLAUDE & STARCK, ARCHITECTS, MADISON, WIS.

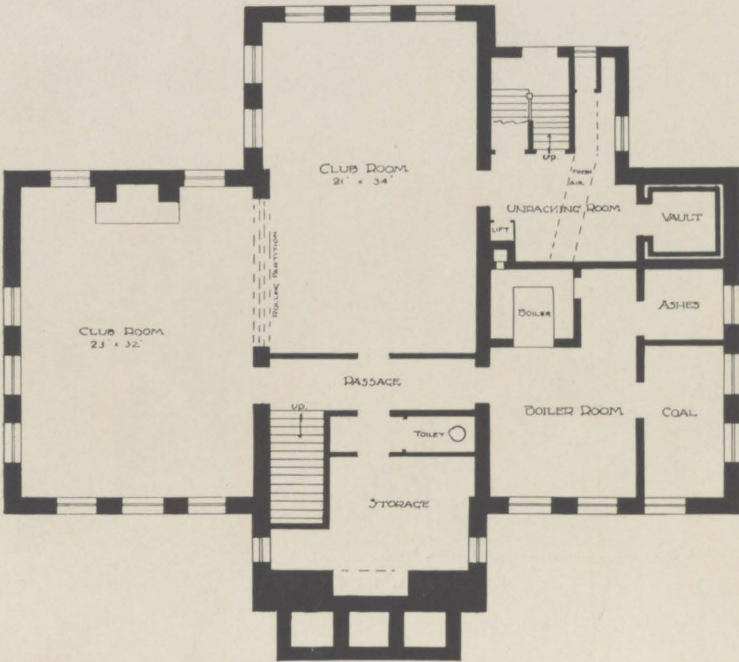
KAUKAUNA, WISCONSIN

PLATE 92

\$15000



FIRST FLOOR
SCALE 1/8" = 1'-0"



BASEMENT
SCALE 1/8" = 1'-0"
BARABOO, WISCONSIN



PATTON & MILLER, ARCHITECTS, CHICAGO

PHOTO. BY C. PAGE

MONTICELLO, IOWA



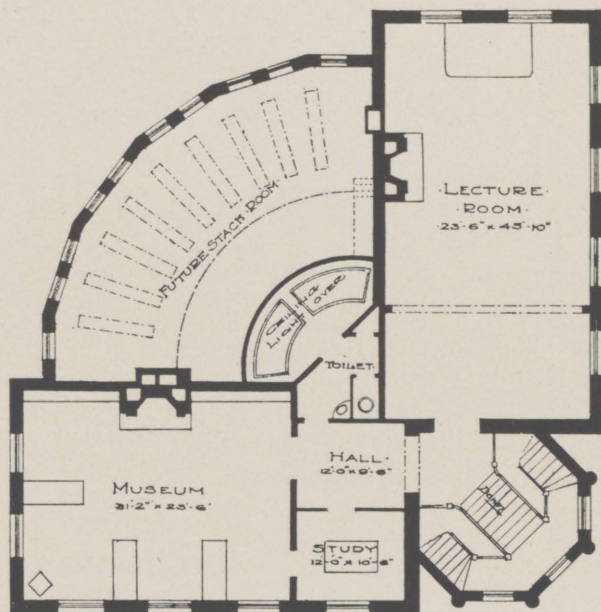
PATTON & MILLER, ARCHITECTS, CHICAGO

PHOTO. BY A. J. W. COPELIN

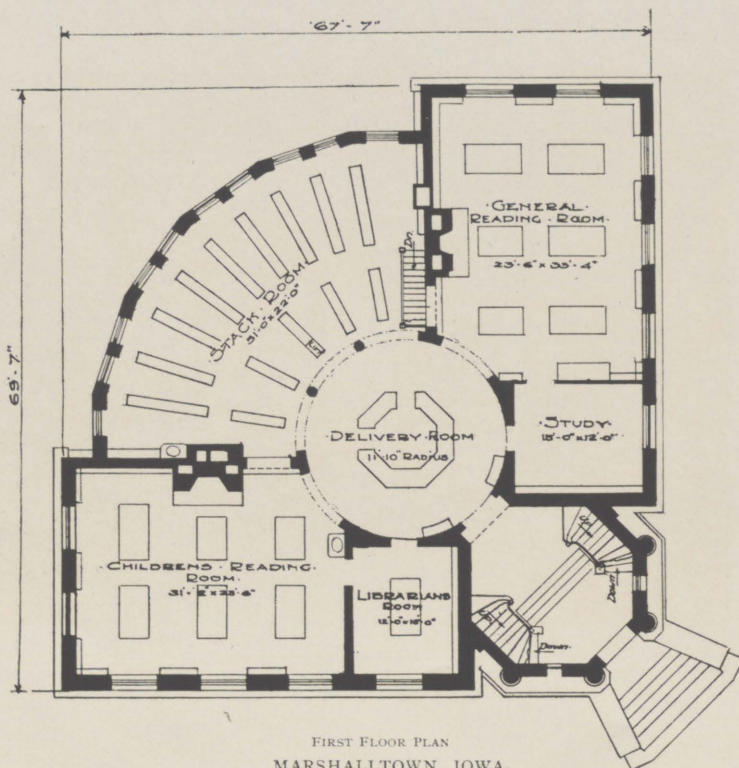
MARSHALLTOWN, IOWA

8/10/00

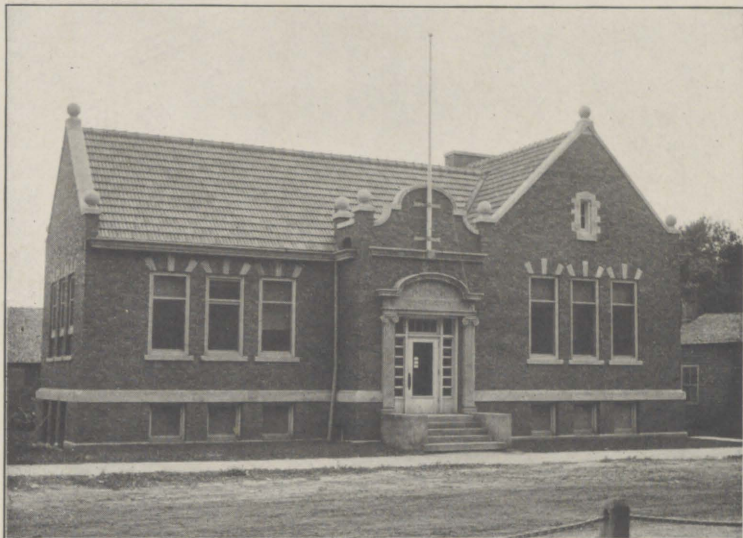
20,000



SECOND FLOOR PLAN



FIRST FLOOR PLAN
MARSHALLTOWN, IOWA



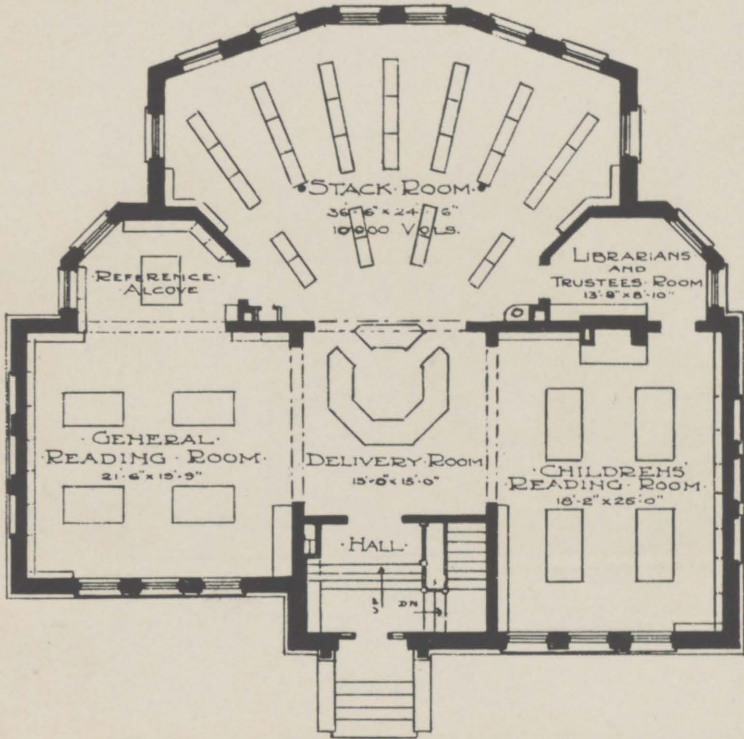
PATTON & MILLER, ARCHITECTS, CHICAGO

PHOTO. BY R. V. ADAMS

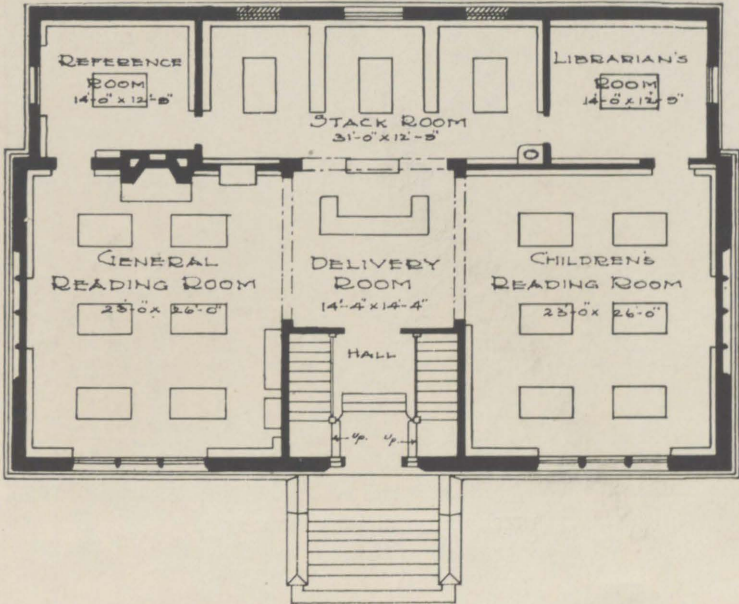
ELDORA, IOWA



INTERIOR OF ELDORA LIBRARY



ELDORA, IOWA



MONTICELLO, IOWA

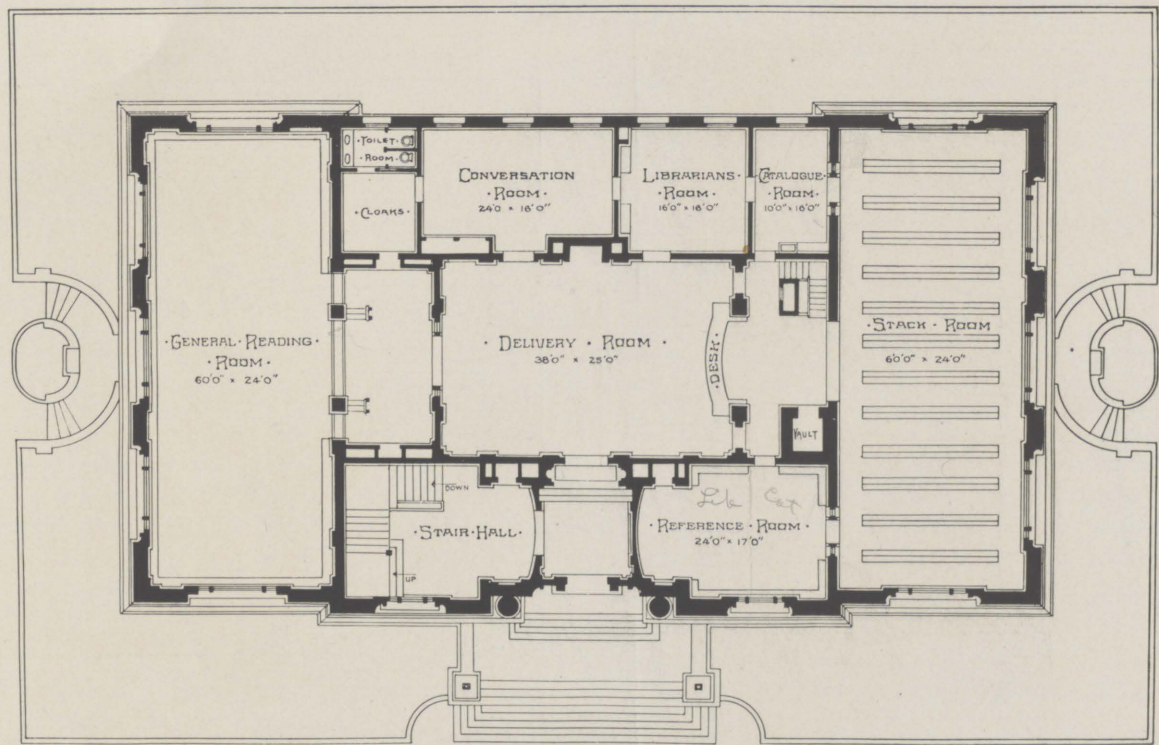


CALVIN KIESSLING, ARCHITECT, BOSTON, MASS.

DAVENPORT, IOWA

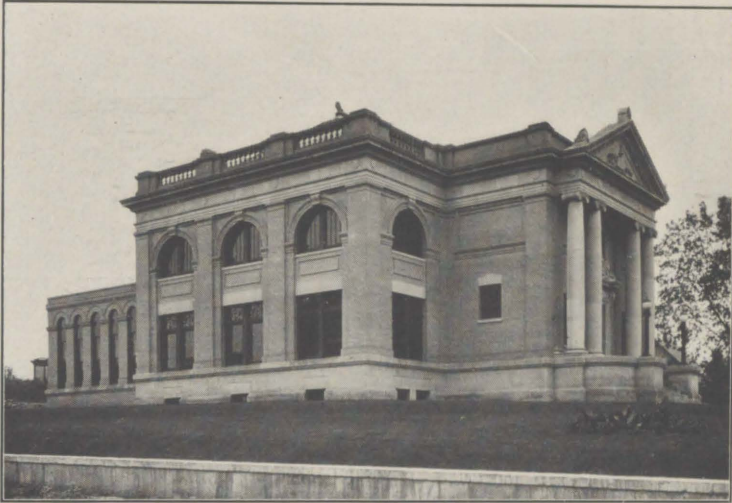


DELIVERY ROOM



DAVENPORT, IOWA

Good



M. R. SANGUINET, ARCHITECT, FORT WORTH, TEX.

PHOTO. BY H. S. STEVENSON

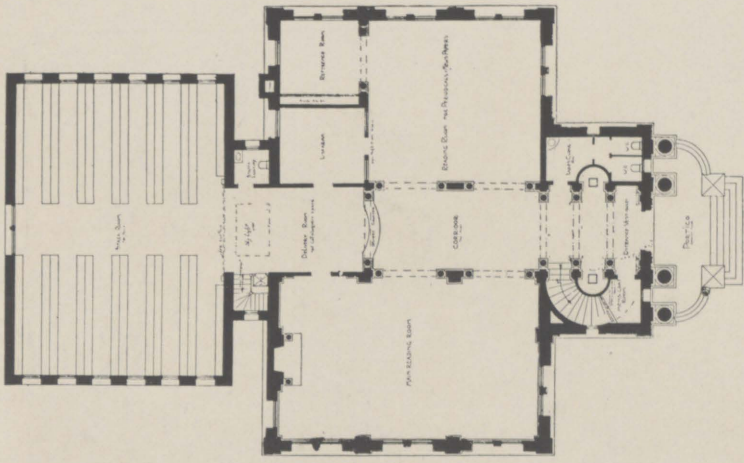
LEAVENWORTH, KANSAS



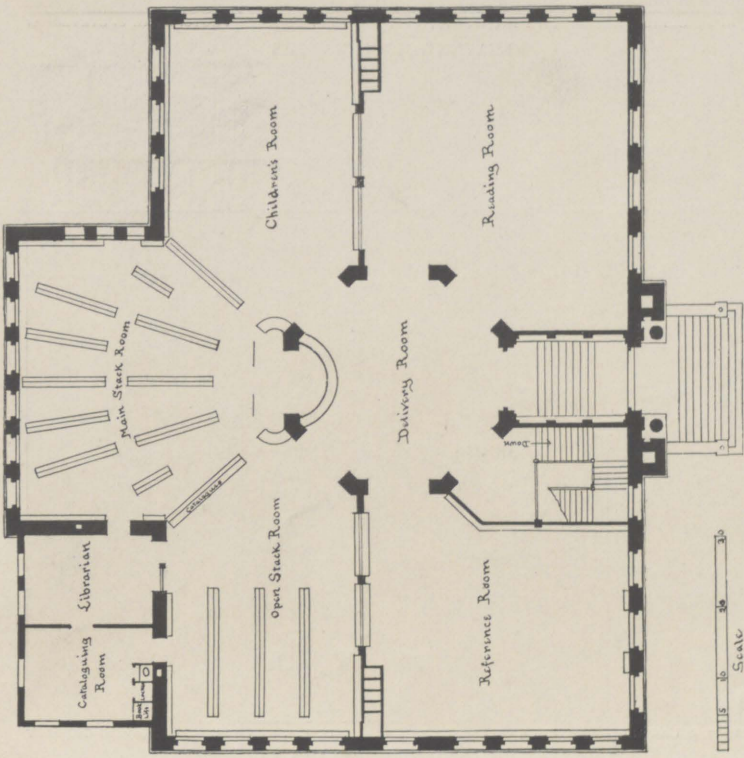
FISHER & LAWRIE, ARCHITECTS, OMAHA, NEB.

PHOTO. BY CORNELL ENGRAVING COMPANY

LINCOLN, NEBRASKA



LEAVENWORTH, KANSAS



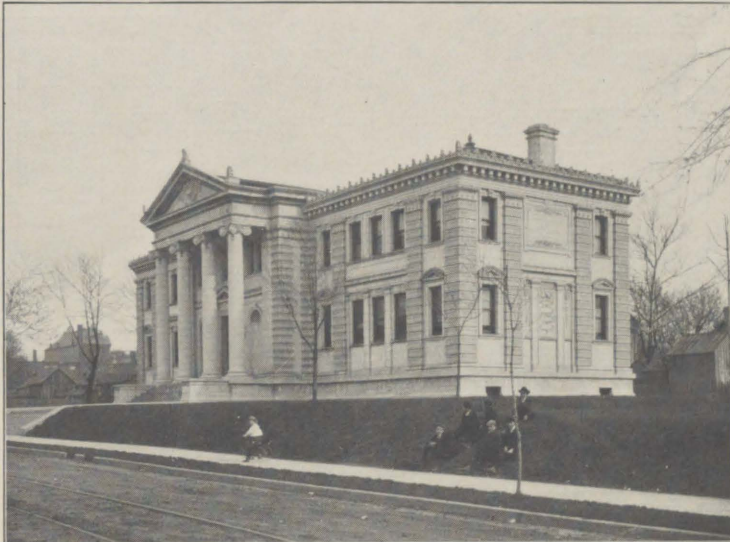
LINCOLN, NEBRASKA



PATTON & MILLER, ARCHITECTS, CHICAGO

PHOTO. BY DUNCAN, ST. LOUIS

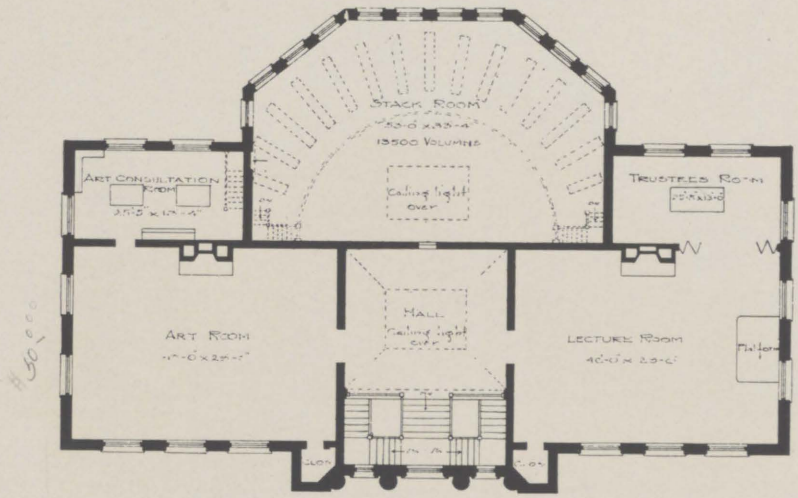
SPRINGFIELD, MISSOURI



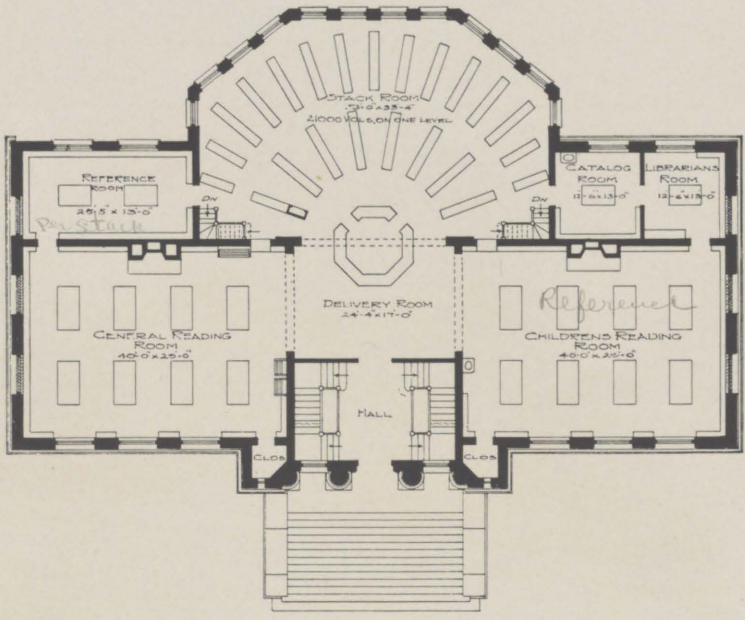
MAURAN, RUSSELL & GARDEN, ARCHITECTS, ST. LOUIS

PHOTO. BY W. H. SHERER

SEDALIA, MISSOURI



SECOND FLOOR PLAN



FIRST FLOOR PLAN
PUBLIC LIBRARY
SPRINGFIELD - MO.



M. R. SANGUINET, ARCHITECT, FORT WORTH

PHOTO. BY C. CHURCH

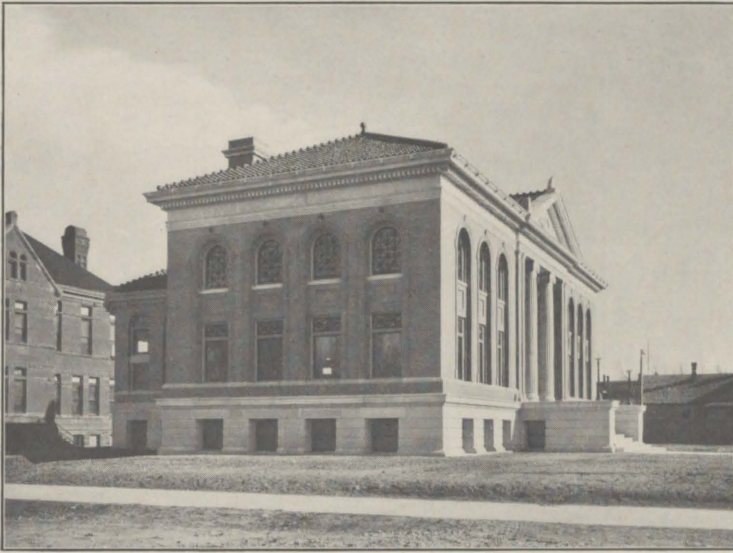
DALLAS, TEXAS



HERBERT H. GREEN, ARCHITECT, DALLAS

PHOTO. BY C. L. SWARTZ

FORT WORTH, TEXAS



PATTON, FISHER & MILLER, ARCHITECTS, CHICAGO

PHOTO. BY J. E. STIMSON

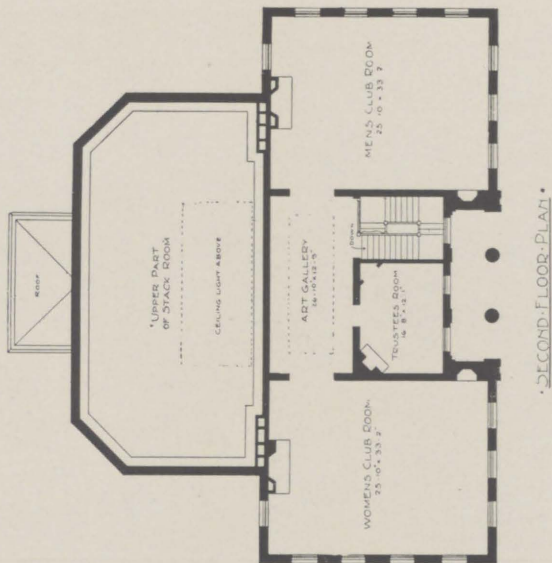
CHEYENNE, WYOMING



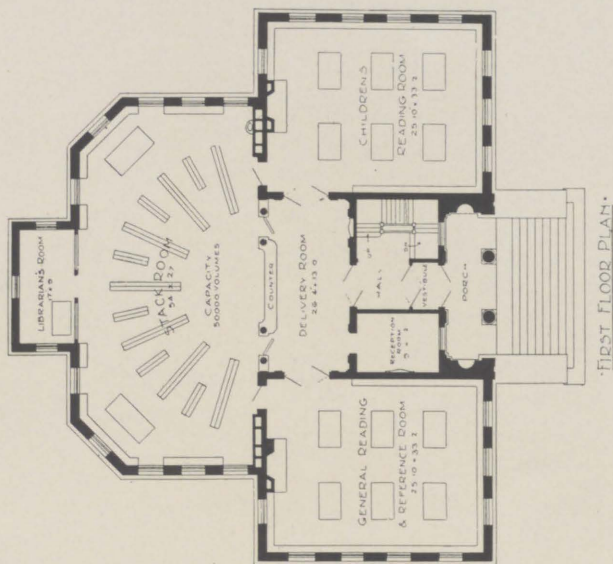
GEORGE C. FROST, ARCHITECT, EL PASO, TEXAS

PHOTO. BY DETROIT PUBLISHING COMPANY

TUCSON, ARIZONA



SECOND FLOOR PLAN



FIRST FLOOR PLAN

CHEYENNE, WYOMING

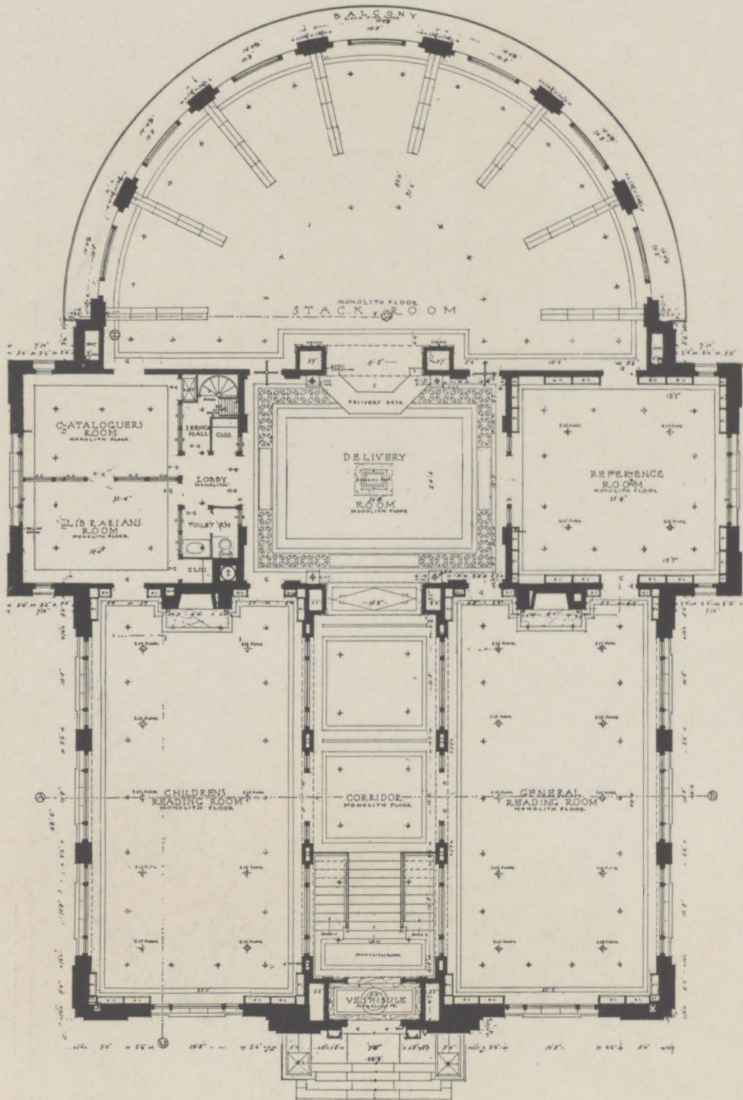


CALVIN KIESSLING, ARCHITECT, BOSTON, MASS.

COLORADO SPRINGS

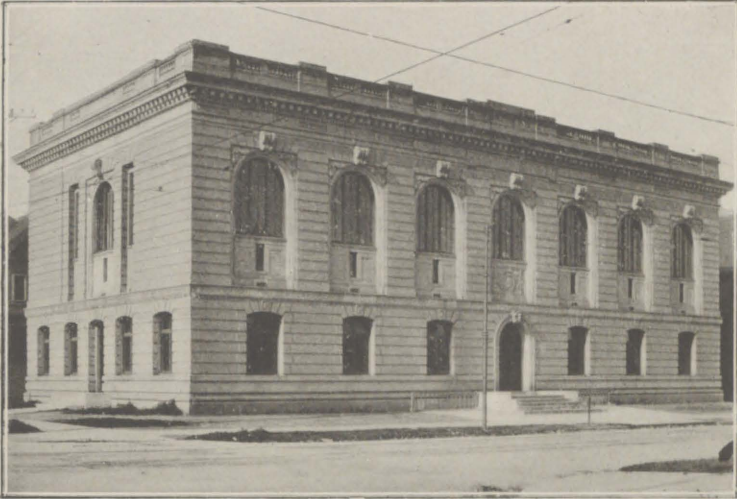
PHOTO. BY F. H. WERKS

Good



From the Brickbuilder, April, 1905

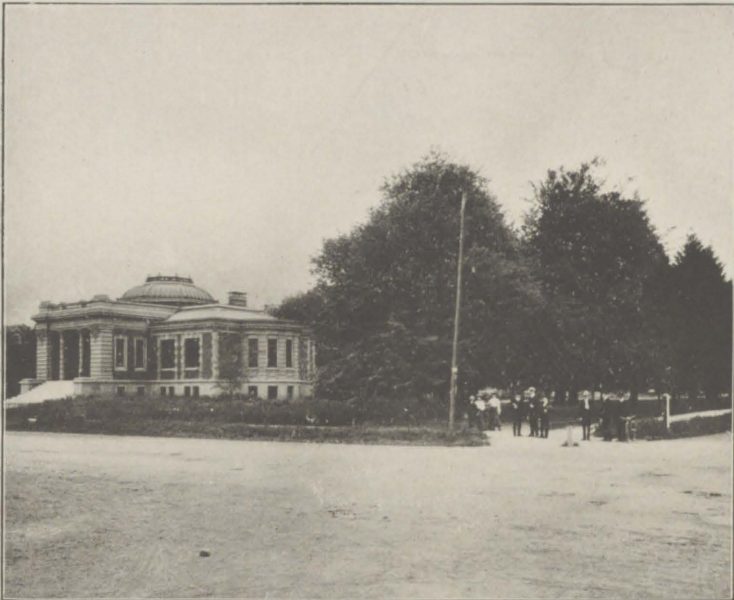
FIRST FLOOR PLAN
COLORADO SPRINGS



BLISS & FAVILLE, ARCHITECTS, SAN FRANCISCO

PHOTO. BY R. J. WATERS & CO.

OAKLAND, CALIFORNIA



WM. BINDER, ARCHITECT

PHOTO. BY A. D. HILL

SAN JOSÉ, CALIFORNIA

Showing the location of the Library in relation to Normal Square

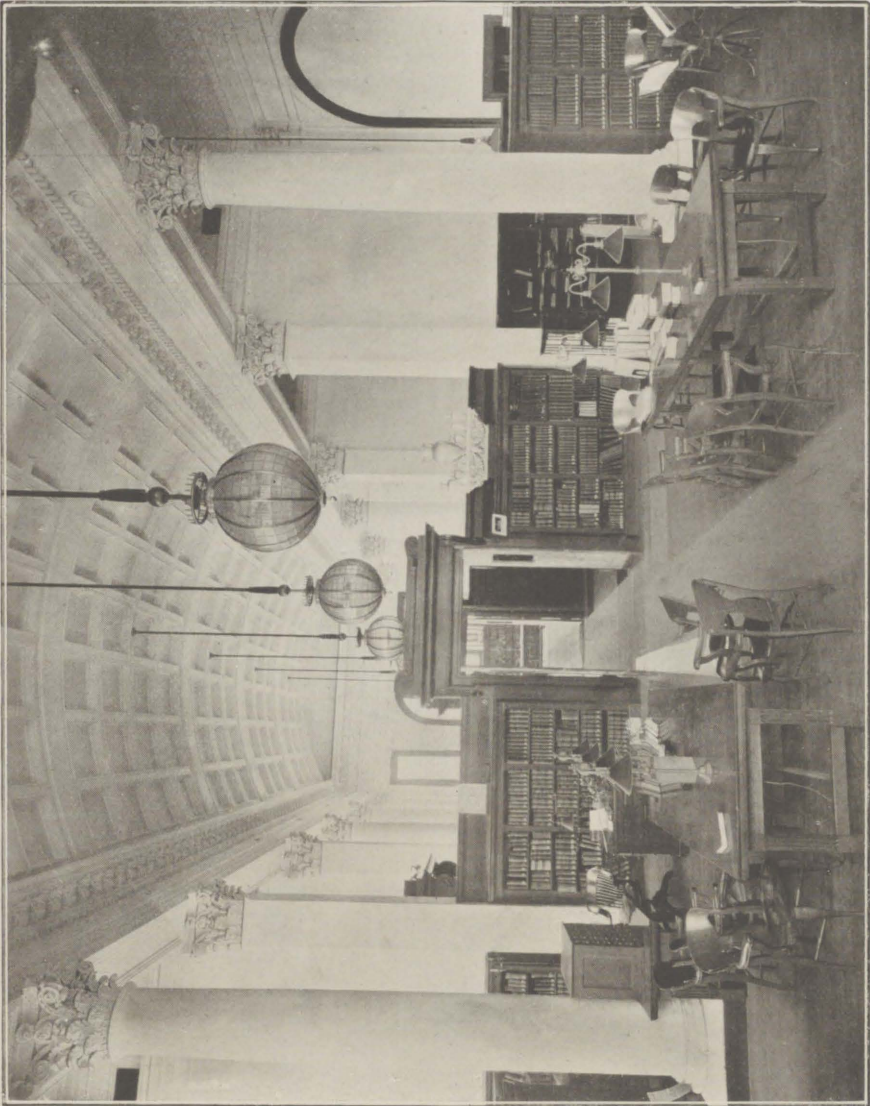


PHOTO. BY R. J. WATERS & CO.

READING ROOM, OAKLAND, CALIFORNIA



BURNHAM & BLIESNER, ARCHITECTS, LOS ANGELES

PHOTO. BY SCHWICHTENBERG

POMONA, CALIFORNIA



CURTIS & WILCOX, ARCHITECTS, SAN FRANCISCO

PHOTO. BY JOSEPH FERNALD

ALAMEDA, CALIFORNIA



BURNHAM & BLIESNER, ARCHITECTS,
LOS ANGELES

Copyright, 1903, by DETROIT PHOTOGRAPHIC COMPANY

RIVERSIDE, CALIFORNIA



DENNIS & FARWELL, ARCHITECTS, LOS ANGELES

PHOTO. BY L. P. HICKOX

SANTA ANA, CALIFORNIA



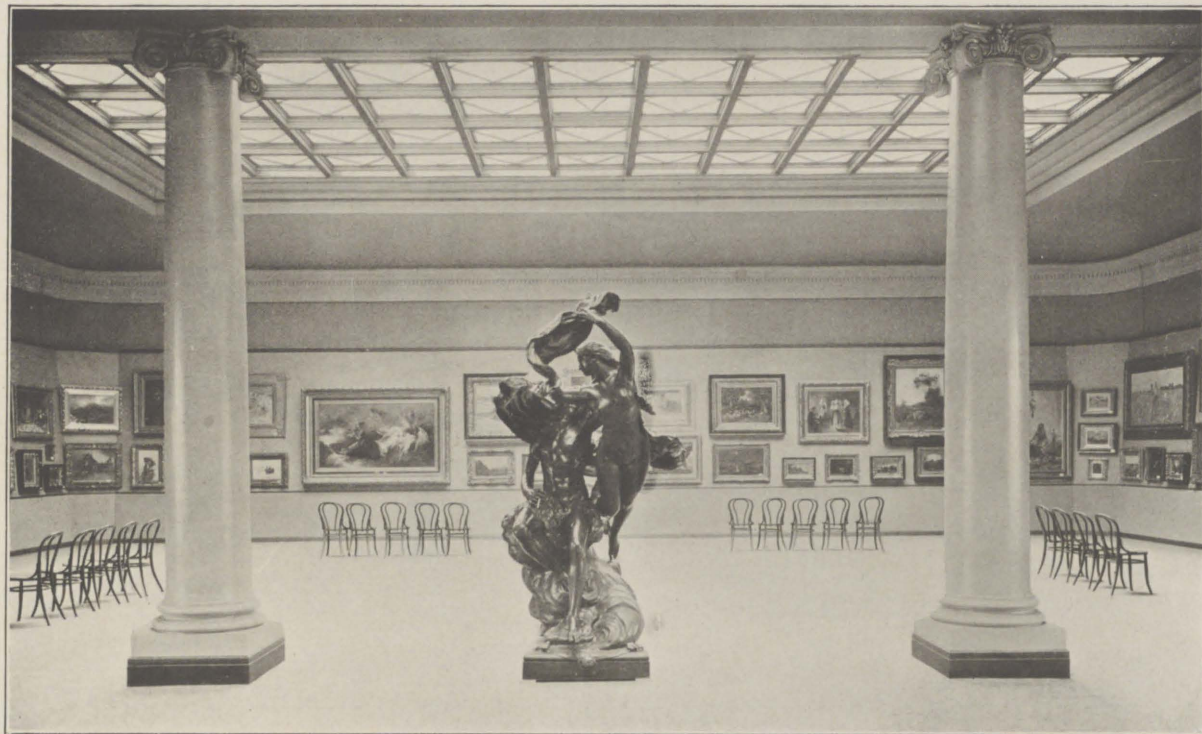
ACKERMAN & ROSS, ARCHITECTS, NEW YORK

PHOTOS. BY H. R. FITCH

SAN DIEGO, CALIFORNIA



CHILDREN'S ROOM AT SAN DIEGO



P. J. WEBER, ARCHITECT, CHICAGO

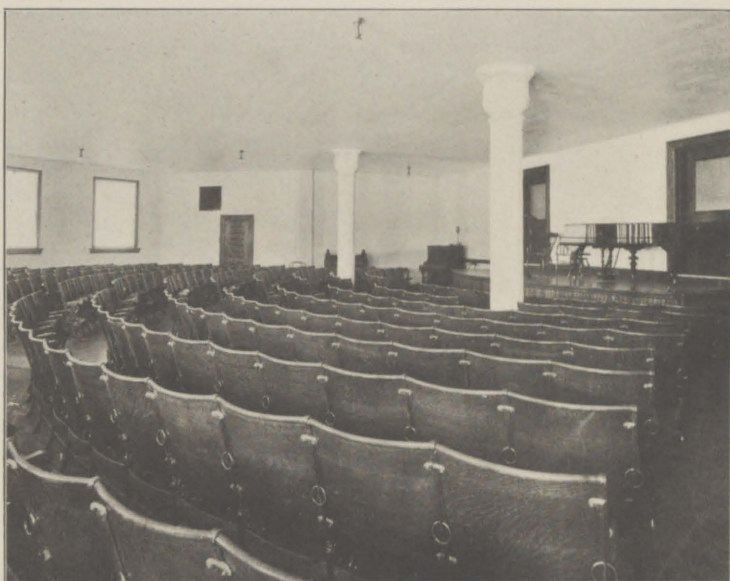
PHOTO. BY WEBSTER & STEVENS

ART ROOM IN PUBLIC LIBRARY, SEATTLE, WASHINGTON



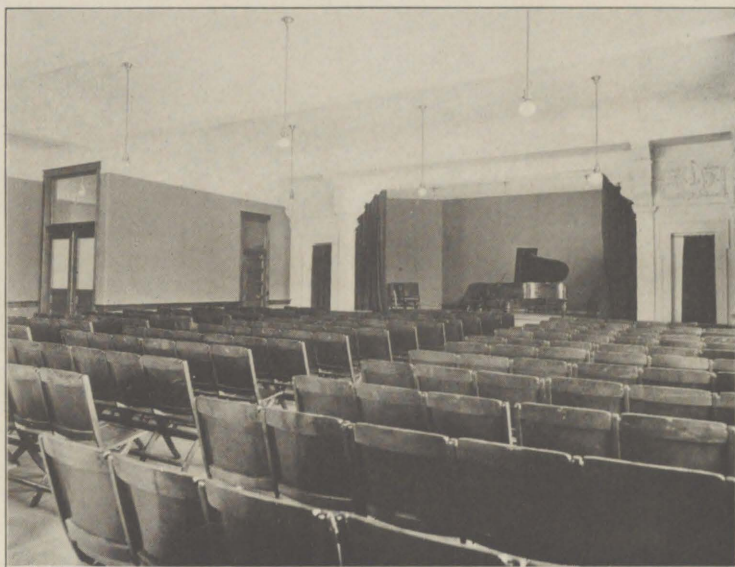
BOYS' READING FRATERNITY, CAMDEN, NEW JERSEY

PLATE 116



AUDITORIUM IN THE FREE PUBLIC LIBRARY
SCHENECTADY, NEW YORK

Seating capacity : 430



AUDITORIUM IN THE FREE PUBLIC LIBRARY
CEDAR RAPIDS, IOWA

Seating capacity : 250

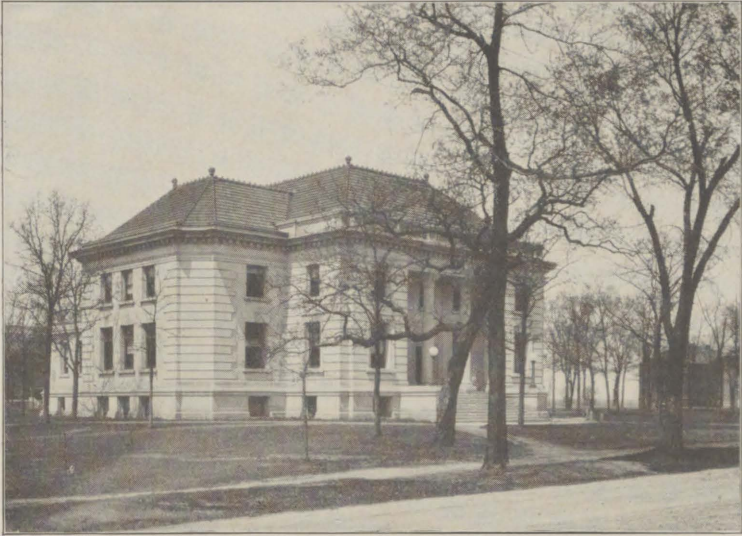


JULIA MORGAN, ARCHITECT, OAKLAND

PHOTO. BY STEWART, OAKLAND

MARGARET CARNEGIE LIBRARY, MILLS COLLEGE, CALIFORNIA

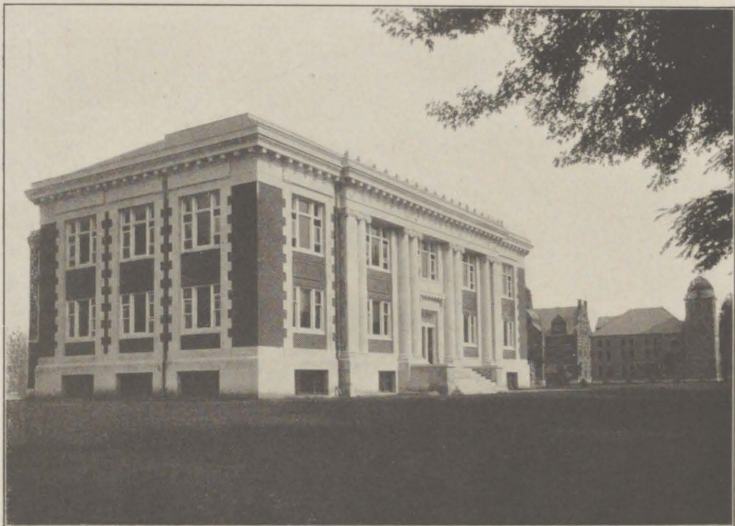
PLATE 118



FATTON & MILLER, ARCHITECTS, CHICAGO

PHOTO. BY E. B. KILBOURN

BELOIT COLLEGE, BELOIT, WISCONSIN



HALLETT & RAWSON, ARCHITECTS, DES MOINES

PHOTO. BY W. S. HENDRIXSON

IOWA COLLEGE, GRINNELL, IOWA



SOUTHERN LIBRARY SCHOOL
Carnegie Library, Atlanta, Georgia

PLATE 120



WISCONSIN LIBRARY SCHOOL

Free Library, Madison, Wisconsin

Maintained by the State in quarters provided by Mr. Carnegie