

University of Texas Rio Grande Valley

**ScholarWorks @ UTRGV**

---

Community Historical Archaeology Project with Schools (CHAPS) Publications

---

2013

## **No.2 - Sekula Report: Arrow, Dart and Fragmented Projectile Points Found Within the Lower Rio Grande Valley Region**

Ashley Leal

University of Texas--Pan American. Community Historical Archaeology Project with Schools Program (CHAPS)

Roseann Bacha-Garza

Follow this and additional works at: <https://scholarworks.utrgv.edu/chapspublications>

---

Danielle Sekula Collection

Arrow, Dart and Fragmented Projectile Points

Found Within the Lower Rio Grande Valley Region

Report prepared by:

Ashley Leal

Report prepared under the supervision of:

Bobbie Lovett – Anthropology Lecturer and Field Archaeologist

Dr. Juan Gonzalez – Professor of Geology and Geomorphologist

Dr. Russell K. Skowronek, Principal Investigator and Professor of History and Anthropology

Community Historical Archaeology Project with Schools

University of Texas – Pan American

Edinburg, TX

Special Report No. 2

2013



## **OUR GOAL**

Our goal at CHAPS is to try to identify evidence for the 10,000 year occupation of the Rio Grande Valley region. This entails photographing, describing and sometimes drawing or casting projectile points and establishing their date within known typologies. Identifying the stone or lithic source materials for the points and locating their place of discovery. With the permission of the “finder” and the landowner we will record sites with the Texas Historical Commission to ensure information on the sites is preserved for future generations. Information gleaned from these descriptive endeavors will be used for scholarly research purposes. All site locations will be kept confidential per the guidelines established by the State of Texas and the larger code of ethics adhered to by the Register of Professional Archaeologists.

## **SITE LOCATIONS**

The points found at the Rio Queen Edinburg, Texas came from various locations owned by the Rio Queen (Paramount) citrus company. One location is located off of Los Ebanos Road and Mile 9. All of the points were found from 2008 to 2012.

The points found on the ground of Rio Queen (Paramount) property outside of Edinburg, Texas have scattered locations. One location that was identifiable by Danielle Sekula is located in Donna, Texas where various points were found near a drainage canal in the orchards. One point in particular was located on flat ground half under soil and other half exposed. All the points were found from 2008 to 2013.

The points located in Zapata County were located on the ranch owned by Mr. Sekula when Danielle Sekula was a young girl. The property has since changed owners but holds great significance to the Sekula family. The points analyzed were found from 2000 to 2004. The ranch is located just north of Roma City, TX and was 1,700 acres in size.

## **LOCATION COORDINATES (degrees, minutes, seconds)**

### **Sekula (Rio Queen Edinburg, Texas Points Location)**

Lat: 26° 20' 36.80" N

Long: 98° 19' 15.82" W

### **Sekula (Rio Queen Various Locations where points were found)**

#### **Donna Property**

1) Lat: 26° 15' 41.34" N

Long: 98° 4' 34.09" W

2) Lat: 26° 22' 39.02" N  
 Long: 98° 16' 3.94" W

3) Lat: 26° 22' 26.55" N  
 Long: 98° 16' 4.72" W

**Sekula (Zapata County Private Ranch)**

Lat: 26° 27' 38.97" N

Long: 99° 0' 4.34" W

Projectile Points: Danielle Sekula Collection (Rio Queen – Edinburg) – March 2013

#	Material	Type	Color	Location	Period
1	Chert	Preform (unfinished)	7/3 Very Pale Brown	Rio Queen – Edinburg	Unidentified – unfinished point or broken tip
2	Chert	Possible Tortugas	7/1 Light Gray	Rio Queen – Edinburg	Middle Archaic 2500BC – 1000BC
3	Chert	Matamoros	6/3 Pale Brown	Rio Queen – Edinburg	Late Archaic 1000 BC – 300 BC
4	Chert	Abasolo	4/6 Dark Yellowish Brown	Rio Queen – Edinburg	Early Archaic 6000-2500 BC
5	Chert	Catan	5/3 Brown	Rio Queen – Edinburg	Late Archaic 1000 BC – 300 BC
6	Chert	Tortugas	8/1 White	Rio Queen – Edinburg	Middle Archaic 2500BC – 1000BC
7	Chert	Possible Tortugas	8/3 Very Pale Brown	Rio Queen – Edinburg	Middle Archaic 2500BC – 1000BC
8	Chert	Possible Tortugas	6/4 Light Yellowish Brown	Rio Queen – Edinburg	Middle Archaic 2500BC – 1000BC
9	Chert	Catan	8/1 White	Rio Queen – Edinburg	Middle Archaic 2500BC – 1000BC
10	Higly Weathered Fine Grain; Possibly a Rhyolite	Guerrero	8/2 Very Pale Brown	Rio Queen – Edinburg	Historic AD1700 – AD1600
11	Chert	Guerrero	6/3 Pale Brown	Rio Queen – Edinburg	Historic AD1700 – AD1600

#	Material	Type	Color	Location	Period
12	Chert	Catan	5/3 Brown	Rio Queen – Edinburg	Late Archaic 1000 BC – 300 BC
13	Chert	Matamoros	7/3 Very Pale Brown	Rio Queen – Edinburg	Late Archaic 1000 BC – 300 BC
14	Chert	Matamoros	3/2 Dusty Red	Rio Queen – Edinburg	Late Archaic 1000 BC – 300 BC
15	Chert	Matamoros	8/2 Pinkish White	Rio Queen – Edinburg	Late Archaic 1000 BC – 300 BC
16	Chert	Matamoros	5/1 Gray	Rio Queen – Edinburg	Late Archaic 1000 BC – 300 BC
17	Chert	Fresno	7/1 Light Gray	Rio Queen – Edinburg	Late Prehistoric AD700 – AD1600
18	Chert	Fresno or Possible preform	8/1 White	Rio Queen – Edinburg	Late Prehistoric AD700 – AD1600
19	Chert	Catan	5/2 Brown	Rio Queen – Edinburg	Late Archaic 1000 BC – 300 BC
20	Chert	Early Triangular	7/4 Very Pale Brown	Rio Queen – Edinburg	Early Archaic 6000-2500 BC
21	Chert	Guerrero	6/4 Light Yellowish Brown	Rio Queen – Edinburg	Historic AD1700 – AD1600
22	Fine Grained highly weathered Volcanic Igneous rock	Matamoros	6/1 Gray	Rio Queen – Edinburg	Late Archaic 1000 BC – 300 BC
23	Chert	Perforator/Drill	6/4 Yellowish Brown	Rio Queen – Edinburg	Archaic Period
24	Chert	Matamoros	6/2 Pinkish Gray	Rio Queen – Edinburg	Late Archaic 1000 BC – 300 BC
25	Chert	Matamoros	6/1 Gray	Rio Queen – Edinburg	Late Archaic 1000 BC – 300 BC
26	Chert	Matamoros	5/2 Grayish Brown	Rio Queen – Edinburg	Late Archaic 1000 BC – 300 BC
27	Chert	Matamoros	4/3 Brown	Rio Queen – Edinburg	Late Archaic 1000 BC – 300 BC
28	Chert	Catan	6/3 Pale Brown	Rio Queen – Edinburg	Late Archaic 1000 BC – 300 BC
29	Chert	Fresno	4/3 Weak Red	Rio Queen – Edinburg	Late Prehistoric AD700 – AD1600

#	Material	Type	Color	Location	Period
30	Chert	Possible blade/scrapper	6/2 Light Brownish Gray	Rio Queen – Edinburg	Various forms from Paleo-Indian to Late Prehistoric
31	Chert	Fresno	6/3 Pale Brown	Rio Queen – Edinburg	Late Prehistoric AD700 – AD1600
32	Chert	Fresno	7/3 Very Pale Brown	Rio Queen – Edinburg	Late Prehistoric AD700 – AD1600
33	Chert	Catan	8/4 Very Pale Brown	Rio Queen – Edinburg	Late Archaic 1000 BC – 300 BC
34	Chert	Possible Tool used for small cutting	6/1 Gray	Rio Queen – Edinburg	Various forms from Paleo-Indian to Late Prehistoric
35	Chert	Catan like	4/1 Dark Gray	Rio Queen – Edinburg	Late Archaic 1000 BC – 300 BC
36	Chert	Catan like	7/4 Very Pale Brown	Rio Queen – Edinburg	Late Archaic 1000 BC – 300 BC
37	Chert	Matamoros	6/2 Light Brownish Gray	Rio Queen – Edinburg	Late Archaic 1000 BC – 300 BC
38	Chert	Guerrero	7/1 Light Gray	Rio Queen – Edinburg	Historic AD1700 – AD1600
39	Chert	Catan/smaller for an average Catan	6/4 Light Yellowish Brown	Rio Queen – Edinburg	Late Archaic 1000 BC – 300 BC
40	Chert	Fresno	2/1 Black	Rio Queen – Edinburg	Late Prehistoric AD700 – AD1600
41	Fine Grained Volcanic; Layered almost like glass*	Cameron	2/2 Very Dark Brown	Rio Queen – Edinburg	Late Prehistoric AD700 – AD1600
42	Chert	Guerrero	8/1 White with very pale brown	Rio Queen – Edinburg	Historic AD1700 – AD1600
43	Chert	Matamoros	6/1 Gray	Rio Queen – Edinburg	Late Archaic 1000 BC – 300 BC
44	Chert	Cameron	8/3 Very Pale Brown	Rio Queen – Edinburg	Late Prehistoric AD700 – AD1600
45	Chert	Cameron	7/1 Light Gray	Rio Queen – Edinburg	Late Prehistoric AD700 – AD1600
46	Chert	Cameron	6/3 Pale Brown	Rio Queen – Edinburg	Late Prehistoric AD700 – AD1600

#	Material	Type	Color	Location	Period
47	Chert	Cameron	6/2 Light Brownish Gray	Rio Queen – Edinburg	Late Prehistoric AD700 – AD1600
48	Chert	Cameron	7/2 Light Gray	Rio Queen – Edinburg	Late Prehistoric AD700 – AD1600
49	Chert	Cameron	7/3 Very Pale Brown	Rio Queen – Edinburg	Late Prehistoric AD700 – AD1600

Projectile Points: Danielle Sekula Collection (Rio Queen Various Locations) – March 2013

#	Material	Type	Color	Location	Period
1	Chert	Pandora	8/4 Very Pale Brown	Rio Queen Various Locations	Middle Archaic 2500 BC – 1000 BC
2	Chert	Early Triangular	7/3 Very Pale Brown	Rio Queen Various Locations	Early Archaic 6000-2500 BC
3	Chert	Catan	3/1 Very Dark Gray with Brown stripes	Rio Queen Various Locations	Late Archaic 1000 BC – 300 BC
4	Chert	Preform	8/2 Very Pale Brown	Rio Queen Various Locations	-
5	Chert	Tool/Serrated Edge	7/2 Light Gray	Rio Queen Various Locations	-
6	Fine Grain Black Chert; Almost like glass*	Catan	3/1 Very Dark Gray	Rio Queen Various Locations	Late Archaic 1000 BC – 300 BC
7	Chert	Early Triangular	6/2 Light Brownish Gray	Rio Queen Various Locations	Early Archaic 6000-2500 BC
8	Chert	Matamoros	4/3 Reddish Brown	Rio Queen Various Locations	Late Archaic 1000 BC – 300 BC
9	Petrified Wood*	Unknown	7/4 Pink	Rio Queen Various Locations	Unidentified – unfinished point or broken tip
10	Fine Grained Volcanic Rock; Dacite	Matamoros	5/1 Gray	Rio Queen Various Locations	Late Archaic 1000 BC – 300 BC

#	Material	Type	Color	Location	Period
11	Chert	Catan like/ edge cut off/ possible small tool	7/4 Very Pale Brown	Rio Queen Various Locations	Late Archaic 1000 BC – 300 BC
12	Chert	Matamoros	7/1 Light Gray	Rio Queen Various Locations	Late Archaic 1000 BC – 300 BC
13	Chert	Cameron/Large	7/2 Light Gray	Rio Queen Various Locations	Late Prehistoric AD700 – AD1600
14	Chert	Fresno	3/1 Very Dark Gray	Rio Queen Various Locations	Late Prehistoric AD700 – AD1600
15	Chert	Fresno	3/6 Dark Yellowish Brown	Rio Queen Various Locations	Late Prehistoric AD700 – AD1600
16	Chert	Fresno	5/4 Yellowish Brown	Rio Queen Various Locations	Late Prehistoric AD700 – AD1600
17	Chert	Guerrero	7/4 Very Pale Brown	Rio Queen Various Locations	Historic AD1700 – AD1600
18	Chert	Clump/ unidentifiable	2/1 Black	Rio Queen Various Locations	Unidentified – unfinished point or broken tip
19	Chert	Frio base	4/1 Dark Gray	Rio Queen Various Locations	Transitional Archaic
20	Chert	Fresno (thick)	5/3 Reddish Brown	Rio Queen Various Locations	Late Prehistoric AD700 – AD1600
21	Chert	Unknown	7/3 Very Pale Brown	Rio Queen Various Locations	Unidentified – unfinished point or broken tip or stem
22	Chert with Inclusions*	Unknown	4/3 Brown	Rio Queen Various Locations	Unidentified – unfinished point or broken tip or stem
23	Chert	Fresno	4/1 Dark Gray	Rio Queen Various Locations	Late Prehistoric AD700 – AD1600
#	Material	Type	Color	Location	Period



24	Chert	Fresno	7/2 Light Gray	Rio Queen Various Locations	Late Prehistoric AD700 – AD1600
25	Chert	Fresno	7/1 Light Gray	Rio Queen Various Locations	Late Prehistoric AD700 – AD1600
26	Chert	Starr	6/4 Light Yellowish Gray	Rio Queen Various Locations	Late Prehistoric AD700 – AD1600
27	Chert	Caracara	6/2 Light Brownish Gray	Rio Queen Various Locations	Late Prehistoric AD700 – AD1600
28	Chert	Tip of point/ type of point unknown	7/1 Light Gray	Rio Queen Various Locations	Unidentified – unfinished point or broken tip or stem
29	Chert	Starr	8/1 White	Rio Queen Various Locations	Late Prehistoric AD700 – AD1600
30	Chert	Starr	5/6 Yellowish Red	Rio Queen Various Locations	Late Prehistoric AD700 – AD1600
31	Chert	Starr	6/6 Brownish Yellow	Rio Queen Various Locations	Late Prehistoric AD700 – AD1600
32	Chert	Tip of point/ type of point Unknown	6/2 Light Brownish Gray	Rio Queen Various Locations	Unidentified – unfinished point or broken tip or stem
33	Chert	Fresno	6/2 Light Brownish Gray	Rio Queen Various Locations	Late Prehistoric AD700 – AD1600
34	Chert	Possible Knife/Blade*	7/3 Very Pale Brown	Rio Queen Various Locations	-
35	Chert	Unknown	7/3 Very Pale Brown	Rio Queen Various Locations	Unidentified – unfinished point or broken tip or stem
36	Chert with Iron Bands	Preform	7/2 Light Gray	Rio Queen Various Locations	-

#	Material	Type	Color	Location	Period
37	Chert	Possible Abasolo Preform	7/4 Very Pale Brown	Rio Queen Various Locations	Early Archaic 6000-2500 BC
38	Weathered Rhyolite	Base of Refugio	5/3 Brown	Rio Queen Various Locations	Middle Archaic 2500 BC – 1000 BC
39	Chert	Unknown	7/4 Very Pale Brown	Rio Queen Various Locations	Unidentified – unfinished point or broken tip or stem
40	Chert with Inclusions*	Unknown	4/2 Dark Grayish Brown	Rio Queen Various Locations	Unidentified – unfinished point or broken tip or stem
41	Chert	Possible Catan	7/6 Yellow	Rio Queen Various Locations	Late Archaic 1000 BC – 300 BC
42	Rhyolite; Igneous Rock	Refugio	7/1 Light Gray	Rio Queen Various Locations	Middle Archaic 2500 BC – 1000 BC
43	Chert	Preform/not complete/possible cutting utensil	8/1 White	Rio Queen Various Locations	-
44	Chert	Refugio	5/2 Grayish Brown (Speckled)	Rio Queen Various Locations	Middle Archaic 2500 BC – 1000 BC
45	Chert	Fresno	7/2 Pinkish Gray	Rio Queen Various Locations	Late Prehistoric AD700 – AD1600
46	Chert	Matamoros	6/1 Gray	Rio Queen Various Locations	Late Archaic 1000 BC – 300 BC
47	Weathered Rhyolite	Cameron	7/8 Yellow	Rio Queen Various Locations	Late Prehistoric AD700 – AD1600
48	Super Fine Grain Volcanic rock; like glass*	Matamoros	2/1 Very Dark Gray	Rio Queen Various Locations	Late Archaic 1000 BC – 300 BC

#	Material	Type	Color	Location	Period
49	Chert	Fresno	6/1 Gray	Rio Queen Various Locations	Late Prehistoric AD700 – AD1600
50	Chert	Catan (thick)	8/3 Very Pale Brown	Rio Queen Various Locations	Late Archaic 1000 BC – 300 BC
51	Chert	Catan base	4/2 Dark Grayish Brown	Rio Queen Various Locations	Late Archaic 1000 BC – 300 BC
52	Chert	Fresno	8/1 White	Rio Queen Various Locations	Late Prehistoric AD700 – AD1600
53	Chert	Matamoros	¾ Dark Yellowish Brown	Rio Queen Various Locations	Late Archaic 1000 BC – 300 BC
54	Chert	Cameron	6/2 Light Brownish Gray	Rio Queen Various Locations	Late Prehistoric AD700 – AD1600
55	Chert	Cameron	6/4 Light Yellowish Brown	Rio Queen Various Locations	Late Prehistoric AD700 – AD1600

Projectile Points: Danielle Sekula Collection (Zapata County) – March 2013

#	Material	Type	Color	Location	Period
1	Chert	Preform	6/3 Pale Brown	Zapata County	-
2	Chert	Possible Tool/Scraper	7/1 Light Gray	Zapata County	-
3	Chert	Preform	7/2 Light Gray	Zapata County	-
4	Chert	Catan	4/6 Dark Yellowish Brown	Zapata County	Late Archaic 1000 BC – 300 BC
5	Chert	Unidentified/ Possible Matamoros	5/3 Brown	Zapata County	Late Archaic 1000 BC – 300 BC
6	Chert	Matamoros	8/1 White	Zapata County	Late Archaic 1000 BC – 300 BC

7	Chert	Matamoros	8/1 White (has speckles around it)	Zapata County	Late Archaic 1000 BC – 300 BC
<b>#</b>	<b>Material</b>	<b>Type</b>	<b>Color</b>	<b>Location</b>	<b>Period</b>
8	Chert	Guerrero	6/3 Pale Brown	Zapata County	Historic AD1700 – AD1600
9	Chert	Matamoros	6/3 Pale Brown	Zapata County	Late Archaic 1000 BC – 300 BC
10	Chert	Guerrero	8/3 Very Pale Brown	Zapata County	Historic AD1700 – AD1600
11	Chert	Fresno	¾ Dark Yellowish Brown	Zapata County	Late Prehistoric AD700 – AD1600
12	Chert	Matamoros	7/1 Light Gray	Zapata County	Late Archaic 1000 BC – 300 BC
13	Chert	Fresno	2/2 Very Dark Brown	Zapata County	Late Prehistoric AD700 – AD1600
14	Chert	Fresno	8/3 Very Pale Brown	Zapata County	Late Prehistoric AD700 – AD1600
15	Chert	Starr	8/1 White	Zapata County	Late Prehistoric AD700 – AD1600

All points with a star symbol at the end of the material will have a special comment below\*

### Descriptions for each type of point:

**Abasolo** (dart point) is a large, triangular point that has a distinctive well rounded base. The lateral edges may be beveled or steeply chipped, and the base is sometimes thinned. It is similar to Catan points but larger in size (Turner and Hester 1999: 68).

**Cameron** (arrow point) is a tiny, usually equilateral, triangular point with straight to slightly convex edges a few are unifacially chipped, and some are made of glass. Similar to *Fresno* type, but smaller (Turner and Hester 1999: 204).

**Caracara** (arrow point) is side-notched, small, very thin point that has been defined by R. K. Saunders. The convex to nearly straight lateral edges of the point are often finely serrated. Flaking is random but usually well executed (Turner and Hester 1999: 205).

**Catán** (dart point) is a triangular, unstemmed point that has straight to slightly convex lateral edges that are sometimes beveled and a convex, well-rounded base that has been thinned by the removal of one or two broad, arch-shaped flakes. The outline is similar to *Abasolo*, but *Catán* points are smaller (Turner and Hester 1999: 89).

**Early Triangular** (dart point) is a triangular point that usually is characterized by careful parallel-oblique flaking, straight to slightly concave bases, and alternately-beveled lateral edges (which may be slightly serrated) (Turner and Hester 1999: 108).

**Fresno** (arrow point) is stemless, triangular that has straight to slightly convex or concave lateral edges, and a convex or slightly concave base. It is similar to *Cameron* but over 20mm in length (Turner and Hester 1999: 213).

**Frio** (dart point) has a triangular body, often short and broad, with wide side or corner-notches and a concave basal indentation that ranges from shallow to deep U-shaped notch (Turner and Hester 1999: 122).

**Guerrero** (arrow point) triangular to lanceolate points made during the Spanish Colonial era (1700's) of Coahuila and Texas, often referred to as "mission" points. They sometimes have very careful parallel-flaking and are often found in mission Indian middens as well as ranchos and at historic Indian occupation sites (Turner and Hester 1999: 216).

**Matamoros** (dart point) is a small, often thick, triangular or sub triangular, point that is similar to *Tortugas*, but markedly smaller. Average length of *Tortugas* is 4.9 mm – 6.7 mm and *Matamoros* ranges from 3.2 mm to 4.7 mm in length (Turner and Hester 1999: 153).

### **Preform**

**Perforator/Drill** is a tool that is characterized by a long and tapered bit that is diamond-shaped in cross-section. The bit and proximal end are bifacially flaked and sometimes exhibit retouching; the tips of drills are often blunted or dulled (Turner and Hester 1999: 270).

**Refugio** (dart point) is unstemmed, elongated-triangular point that sometimes has a needle-like distal tip. The base is convex and often thinned. It is possible that some may be preforms or knives (Turner and Hester 1999: 178).

**Scraper** various forms and quality of workmanship in this category of unifacially flaked artifacts that are traditionally referred to, and presumably functioned, as scrapers. Found in a wide range of shapes and forms; most are made on large flakes or blades and are characterized by a steeply flaked working edge. Scrapers are found throughout the Texas region (Turner and Hester 1999: 280).

**Starr** (arrow point) a triangular point that is distinguished by slightly concave lateral edges and has a pronounced basal concavity (Turner and Hester 1999: 231).

**Tortugas** (dart point) are large, triangular points that have an approximately straight to concave base and alternately beveled edges. It is often thick and crudely flaked in the midsection and well-thinned basally (Turner and Hester 1999: 188).

## **SPECIAL COMMENTS**

Item #9 (Rio Queen Various Areas Collection) has been identified as petrified wood. The point is triangular in shape but is unidentifiable. It is very rare to find a petrified wood projectile point.

Items # 41(Edinburg Collection) #6 and #48 (Rio Queen Various Areas Collection) were found to be very unique in that they both were very fine grained and resembled the material of glass.

Item # 22 (Rio Queen Various Areas Collection) was unidentifiable in point type but showed very fine knapping. Noted because the knapping are almost paper thin, not commonly found in all projectile points.

Item # 40 (Rio Queen Various Areas Collection) was unidentifiable in point type but when viewed under a microscopic lens, the stone shows little specks of something that seems to be metallic. This material type was identified as chert with angular inclusions.

Item # 34 (Rio Queen Various Areas Collection) was unique in that it is a much larger projectile point than the others. At first glance we wanted to place it within the Paleo-Indian era as a Scottsbluff but revisited the point and found that it was most identifiable to a knife or blade of some sort. This is a very unique and large piece.

Special note: Some points within this collection that are comprised of chert could have been made using the materials found at the outcrop of chert just north of Rio Grande City that is referred to as El Sauz Outcrop. Prehistoric people settled in these areas and possibly mined and visited the outcrop.

## **SOURCES**

Munsell Color

2009 Munsell Soil-Color Charts. Munsell Color, Grand Rapids, MI.

Kumpe, Don and Mike Krzywonski

2010 "El Sauz Chert: A Distinctive Lithic Resource on the Lower Rio Grande".  
Southern Texas Archaeological Association, San Antonio.

Turner, Sue and Thomas R. Hester

1999 A Field Guide to Stone Artifacts of Texas Indians. Gulf Publishing, New York.

1



5



9



2



6



10



*Early Triang.*

3



7



11



4



8



Danielle Sekula  
Rio Queen  
March 2013

CM





12



16



20



13



17



21



14



18



22



15

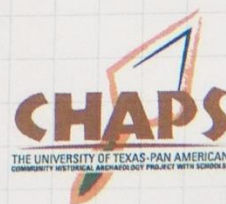


19



*Flint base*

Danielle Sekula  
Rio Queen  
March 2013





23



27



31



~~Frio Base?~~  
Caracara

24



28



32



Tip off po

Tip of point

25



29



33



Starr

26



30



starr

Danielle Sekula  
Rio Queen  
March 2013



1



6



2



7



3



8



4



9



5



Danielle Sekula  
Rio Queen Collection - Edinburg  
March 2013





10



15



11



16



12



17



13



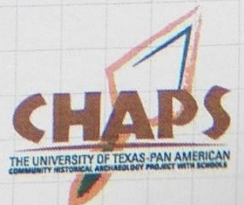
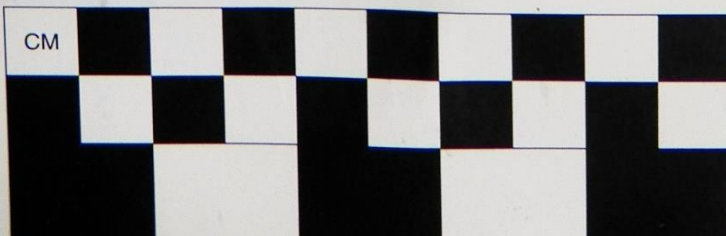
18



14



Danielle Sekula  
Rio Queen Collection - Edinburg  
March 2013



19



24



20



25



21



26



22



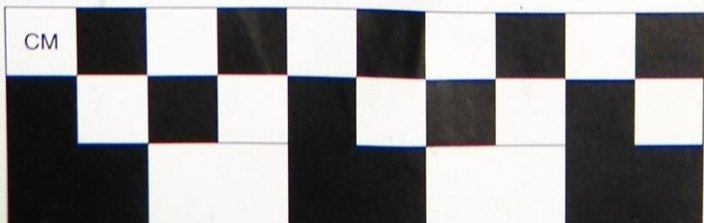
27



23



Danielle Sekula  
Rio Queen Collection - Edinburg  
March 2013





28



33



29



34



30



35



31



36



32



Danielle Sekula  
Rio Queen Collection - Edinburg  
March 2013



37



42



38



43



39



44



40



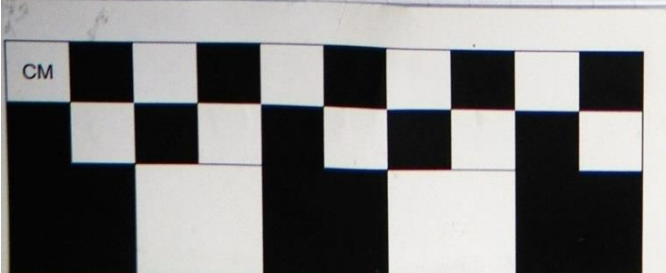
45



41



Danielle Sekula  
Rio Queen Collection - Edinburg  
March 2013





46



51

47



52

48



53

49



54

50

Danielle Sekula  
Rio Queen Collection - Edinburg  
March 2013

CM

