

University of Texas Rio Grande Valley

ScholarWorks @ UTRGV

---

Earth, Environmental, and Marine Sciences  
Faculty Publications and Presentations

College of Sciences

---

9-19-2018

## Particulate metal exposures induce plasma metabolome changes in a commuter panel study

Chandresh N. Ladva

Rachel Golan  
*Ben-Gurion University of the Negev*

Donghai Liang

Roby Greenwald

Douglas I. Walker

*See next page for additional authors*

Follow this and additional works at: [https://scholarworks.utrgv.edu/eems\\_fac](https://scholarworks.utrgv.edu/eems_fac)



Part of the [Earth Sciences Commons](#), [Environmental Sciences Commons](#), and the [Marine Biology Commons](#)

---

### Recommended Citation

Ladva CN, Golan R, Liang D, Greenwald R, Walker DI, Uppal K, et al. (2018) Particulate metal exposures induce plasma metabolome changes in a commuter panel study. PLoS ONE 13(9): e0203468. <https://doi.org/10.1371/journal.pone.0203468>

This Article is brought to you for free and open access by the College of Sciences at ScholarWorks @ UTRGV. It has been accepted for inclusion in Earth, Environmental, and Marine Sciences Faculty Publications and Presentations by an authorized administrator of ScholarWorks @ UTRGV. For more information, please contact [justin.white@utrgv.edu](mailto:justin.white@utrgv.edu), [william.flores01@utrgv.edu](mailto:william.flores01@utrgv.edu).

---

**Authors**

Chandresh N. Ladva, Rachel Golan, Donghai Liang, Roby Greenwald, Douglas I. Walker, Amit U. Raysoni, ViLinh Tran, Tianwei Yu, W. Dana Flanders, and Gary W. Miller

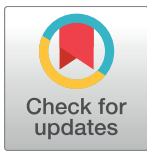
RESEARCH ARTICLE

# Particulate metal exposures induce plasma metabolome changes in a commuter panel study

Chandresh Nanji Ladva<sup>1\*</sup>, Rachel Golan<sup>2</sup>, Donghai Liang<sup>3</sup>, Roby Greenwald<sup>4</sup>, Douglas I. Walker<sup>5</sup>, Karan Uppal<sup>5</sup>, Amit U. Raysoni<sup>3</sup>, ViLinh Tran<sup>5</sup>, Tianwei Yu<sup>5</sup>, W. Dana Flanders<sup>1</sup>, Gary W. Miller<sup>2</sup>, Dean P. Jones<sup>6</sup>, Jeremy A. Sarnat<sup>2</sup>

**1** Department of Epidemiology, Rollins School of Public Health, Emory University, Atlanta, GA, United States of America, **2** Department of Public Health, Ben-Gurion University of the Negev, Beer Sheva, Israel, **3** Department of Environmental Health, Rollins School of Public Health, Emory University, Atlanta, GA, United States of America, **4** Department of Environmental Health, Georgia State University, Atlanta, GA, United States of America, **5** Clinical Biomarkers Laboratory, Division of Pulmonary, Allergy, and Critical Care Medicine, School of Medicine, Emory University, Atlanta, GA, United States of America, **6** Department of Biostatistics and Bioinformatics, Rollins School of Public Health, Emory University, Atlanta, GA, United States of America

\* [chandresh.ladva@emory.edu](mailto:chandresh.ladva@emory.edu)



**OPEN ACCESS**

**Citation:** Ladva CN, Golan R, Liang D, Greenwald R, Walker DI, Uppal K, et al. (2018) Particulate metal exposures induce plasma metabolome changes in a commuter panel study. *PLoS ONE* 13 (9): e0203468. <https://doi.org/10.1371/journal.pone.0203468>

**Editor:** Markus M. Bachschmid, Boston University, UNITED STATES

**Received:** March 5, 2018

**Accepted:** August 21, 2018

**Published:** September 19, 2018

**Copyright:** © 2018 Ladva et al. This is an open access article distributed under the terms of the [Creative Commons Attribution License](https://creativecommons.org/licenses/by/4.0/), which permits unrestricted use, distribution, and reproduction in any medium, provided the original author and source are credited.

**Data Availability Statement:** All relevant de-identified datasets have been included as Supporting Information files. Data are from the Atlanta Commuters Exposures Study, whose authors may be contacted for further information at [jsarnat@emory.edu](mailto:jsarnat@emory.edu).

**Funding:** The presented research was supported by a Clean Air Research Center grant to Emory University and the Georgia Institute of Technology from the US Environmental Protection Agency (USEPA, RD834799) and the Human Exposome

## Abstract

### Introduction

Advances in liquid chromatography-mass spectrometry (LC-MS) have enabled high-resolution metabolomics (HRM) to emerge as a sensitive tool for measuring environmental exposures and corresponding biological response. Using measurements collected as part of a large, panel-based study of car commuters, the current analysis examines in-vehicle air pollution concentrations, targeted inflammatory biomarker levels, and metabolomic profiles to trace potential metabolic perturbations associated with on-road traffic exposures.

### Methods

A 60-person panel of adults participated in a crossover study, where each participant conducted a highway commute and randomized to either a side-street commute or clinic exposure session. In addition to in-vehicle exposure characterizations, participants contributed pre- and post-exposure dried blood spots for 2-hr changes in targeted proinflammatory and vascular injury biomarkers and 10-hr changes in the plasma metabolome. Samples were analyzed on a Thermo QExactive MS system in positive and negative electrospray ionization (ESI) mode. Data were processed and analyzed in R using apLCMS, xMSanalyzer, and limma. Features associated with environmental exposures or biological endpoints were identified with a linear mixed effects model and annotated through human metabolic pathway analysis in mummichog.

### Results

HRM detected 10-hr perturbations in 110 features associated with in-vehicle, particulate metal exposures (Al, Pb, and Fe) which reflect changes in arachidonic acid, leukotriene, and

Research Center (HERCULES) (NIH, P30 ES019776). Shared instrumentation for metabolomics analysis was supported through the National Institutes of Health (NIH, OD018006). CL acknowledges pre-doctoral support from a training grant (NIH, T32 ES012870-13) and the Burroughs Wellcome Fund through the Molecules the Mankind Doctoral Pathway at Emory University. RG gratefully acknowledges support by a post-doctoral fellowship from the Environment and Health Fund, Jerusalem, Israel. The content of this publication is solely the responsibility of the authors and does not necessarily represent the official views of the National Institutes of Health or the USEPA. Further, USEPA does not endorse the purchase of any commercial products or services mentioned in the publication. The funders had no role in study design, data collection and analysis, decision to publish, or preparation of the manuscript.

**Competing interests:** The authors have declared that no competing interests exist.

tryptophan metabolism. Two-hour changes in proinflammatory biomarkers hs-CRP, IL-6, IL-8, and IL-1 $\beta$  were also associated with 10-hr changes in the plasma metabolome, suggesting diverse amino acid, leukotriene, and antioxidant metabolism effects. A putatively identified metabolite, 20-OH-LTB<sub>4</sub>, decreased after in-vehicle exposure to particulate metals, suggesting a subclinical immune response.

## Conclusions

Acute exposures to traffic-related air pollutants are associated with broad inflammatory response, including several traditional markers of inflammation.

## Introduction

Globally, source apportionment studies attribute 25% of urban ambient particulate matter less than 2.5 microns (PM<sub>2.5</sub>) to traffic sources [1]. Nearly ubiquitous, traffic-related pollution (TRP) has been linked to numerous adverse health effects [2]. Despite this, the specific constituents of TRP responsible for these effects and how they contribute to corresponding biological responses are still not well understood [3]. Uncertainty regarding the etiology of TRP-related toxicity is, in part, due to the complexity of exposures to this pollutant source, as well as the numerous biological pathways that may mediate response [4–7]. It is possible that more sensitive measures of both exposure and response may help identify critical components of TRP and their complementary pathways impacting human health.

Environmental metabolomics has emerged as an approach for sensitively quantitating thousands of chemical signals in a biological sample, providing broad spectrum measurements of human metabolism that may be indicative of environmental chemicals [8]. Metabolomic perturbations have been associated with occupational air pollution exposures [9, 10]. Walker, et al., employed high-resolution metabolomics (HRM), using sensitive liquid chromatography-mass spectrometry (LC-MS), coupled with advanced bioinformatics methods, as a platform linking exposure to internal doses and biological responses. Occupational exposures to trichloroethylene and likely metabolic products were measurable in blood and correlated with expected detoxification pathways [10]. Recently, ambient air pollution exposures have also been found to associate with metabolic perturbations in humans using untargeted approaches [11].

Panel studies of commuting populations provide an exceptional platform to observe potential acute effects of traffic pollution in humans using realistic exposures. This design can harbor the strength of high contrasting exposures [12], while limiting risk to participants to what may be experienced in real-world contexts [13]. We have previously employed panel-based designs, with quasi-experimental exposures, in targeted biomarker analyses following exposures to TRP [13–15]. By introducing repeated biological sampling, researchers can disentangle short term changes in key biological endpoints, such as inflammation and lung function [16] and potentially reveal new insights on TRP toxicity in humans.

The present analysis leverages extensive measurement collected within a scripted, longitudinal panel of car commuters and novel HRM profiling to investigate potential perturbations of the plasma metabolome following exposures to TRP. The Atlanta Commuters Exposure (ACE) panel study included a targeted examination of oxidative stress and inflammation for a suite of cardiovascular and respiratory outcomes associated with on-road traffic exposures during morning rush hour car commutes in Atlanta, GA [17, 18]. In-vehicle exposures to

PM<sub>2.5</sub>, its components, and noise were measured for 60 participants along with repeated biological sampling of numerous heart, lung, and inflammation-related endpoints. Here, we present results examining associations between: 1) specific TRPs with known markers of inflammation and lung function, including forced expiratory volume and high sensitivity C-reactive protein; 2) TRP with perturbations of the metabolome measured twice over a 10h duration; and 3) targeted markers of inflammation and lung function with perturbations of the metabolome. The rationale for the approach arose from the breadth and depth of information available to the researchers from the ACE population and a need in the field to compare hypothesis-driven, targeted measures of response to hypothesis-free, untargeted measures of response. The strength of this analysis is centered around the presence of both known, targeted markers of biological response, with unknown, targeted metabolic features critical for establishing discovery-phase science, as well as a highly-specified personal exposure assessment for each participant, often lacking in human observational studies.

## Materials and methods

### Study design

The ACE study was a longitudinal panel of 60 participants conducted in Atlanta, GA from 2011 to 2013. The design, participant characteristics, and exclusion criteria have been previously discussed [17–19]. This analysis focuses on a subset of 49 participants within the complete panel for which plasma samples were available. In brief, the study participants were measured for inflammatory and cardiorespiratory responses before and after conducting two of three distinct exposure scenarios. The three, 2-hr exposure scenarios were highway, side street, and indoor clinic environments during morning rush hours (approximately 7 to 9 AM). Each was scheduled a week apart and one was necessarily a highway exposure. The study protocol and materials were approved by the Institutional Review Board of the Rollins School of Public Health of Emory University (IRB Study Number 47904). All participants provided written informed consent.

### Exposure assessment

In-vehicle and clinic pollutant sampling was conducted during the exposure period as described previously [20] with characterizations previously published [17]. We focused on particulate matter and specific particulate components with the potential to elicit oxidative stress in humans. We measured PM<sub>2.5</sub> mass, black carbon (BC), particle-bound polycyclic aromatic hydrocarbons (pb-PAHs), particle number concentration (PNC), and noise (dB) continuously using instrumentation housed in a sampling apparatus located in the passenger seat or clinic room during sampling periods [21]. These continuous measures, captured in 1-second intervals, were time-averaged to 1-minute concentrations for each TRP. We also extracted particulate mass from either quartz or Teflon substrates to characterize 2-hr integrated elemental metal (Al, Pb, and Fe), total organic carbon (OC), and water-soluble organic carbon (WSOC) concentrations. Elemental concentrations (pg/mL) and carbon fraction concentrations (μg/m<sup>3</sup>) were measured using ICP-MS and TD-GC-MS, respectively. This subset of pollutants was chosen *a priori* based upon previously demonstrated associations with traffic or mobile source emissions [18, 21].

### Biological sampling

Sampling and targeted biomarker analysis are outlined in detail elsewhere [17]. Briefly, a panel of inflammatory and oxidative stress markers was collected at multiple time points before and after each commute. Respiratory markers exhaled nitric oxide (eNO), forced expiratory

volume (FEV<sub>1</sub>) and blood-based markers were collected concurrently at both pre-exposure (7AM) and post-exposure (9AM). Dried blood spots were analyzed for high-sensitive C-reactive protein (hs-CRP), interleukin-6 (IL-6), interleukin-8 (IL-8), interleukin-1 $\beta$  (IL-1 $\beta$ ), tumor necrosis factor  $\alpha$  (TNF- $\alpha$ ), soluble intercellular adhesion molecule (sICAM) and soluble vascular cell adhesion molecule (sVCAM) using multiplexed inflammatory and vascular injury panels (Luminex). eNO was measured using a NIOX Mino (Circassia) and FEV<sub>1</sub> was measured using a handheld spirometer. The present analysis focuses on the differences between post- (9AM) and pre-exposure (7AM) measurements of these respiratory and inflammatory markers ( $\Delta$ Biomarkers). Previously, our group showed that lung function markers changed immediately post-exposure from baseline while temporal patterns of blood-based markers were not statistically significant at any time point [17]. In choosing the 7AM and 9AM measures, we believed to capture a temporal window that most closely matched the exposure measures ( $\Delta$ Biomarkers and Exposure are data combined in [S1 Datasets](#)).

Whole, venous blood was collected pre-commute (7AM) and post-commute (6PM). Blood was collected from the arm, usually the cubital vein, into purple topped containers (containing ethylenediamineacetic acid). Samples were spun, and plasma supernatants were aliquoted immediately after collection. All plasma was stored at -80°C.

### High-resolution metabolomics

Metabolomics was completed using established methods [8, 22]. Plasma samples were diluted two-fold with acetonitrile and analyzed in triplicate using a dual-chromatography, high-resolution mass spectrometry system (Dionex Ultimate 3000; ThermoScientific QExactive). Analyte separation was accomplished using reverse-phase C<sub>18</sub> liquid chromatography (Targa C<sub>18</sub> 2.1mm x 100mm x 2.6 $\mu$ m, Higgins Analytical) with mass spectral detection completed in positive and negative mode electrospray ionization at 70,000 (FWHM) resolution over a mass-to-charge ratio (m/z) range of 85 to 1250. For quality control, all sample batches included two replicates of a pooled reference material. NIST SRM 1950 was also included at the beginning and end of all study samples. Concentrations of select metabolites were determined by reference standardization using the positive mode data only [23].

Raw data files were processed in R for feature extraction and quality control using the hybrid mode of adaptive processing of liquid chromatography mass spectrometry ('apLCMS') [24] with modifications by 'xMSanalyzer' [25] to generate the final feature tables used for analysis (Final tables within [S1 Datasets](#)). To improve detection of low abundance metabolites and environmental chemicals, a reference data base of known metabolites was provided to apLCMS which comprised of blood metabolites from the Human Metabolome Database v. 3.6 and a list of 1,209 compounds from the Environmental Protection Agency's Mobile Source Air Toxics Inventory. Detected features were defined as a unique ion identified by its m/z, retention time (RT), and intensity. This algorithm was run separately for each of the positive and negative mode raw spectrograms with respective lists of ion adducts optimized for the metabolomics platform. Only those features that were reproduced over two, distinct iterations of apLCMS, exhibited median coefficients of variation (CoV) across technical triplicates less than 30%, and were detected in at least 10% of the biological samples were included in the statistical analysis. Values below the analytical limit of detection (LOD) for each feature were imputed with LOD/2.

### Statistical analysis

Microenvironmental concentrations were first compared with corresponding changes in targeted biomarker levels with subject as a random effect using mixed effect models to explore

direct association between exposure and targeted biological responses [17]. Metabolomics data were analyzed in two ways, focusing first on environmental ( $Exposure_{ij}$ ) associations, and then on targeted biomarker ( $\Delta Biomarker_{ij}$ ) associations. The approach comprised feature selection by metabolome wide association (MWAS) and human metabolic pathway enrichment of significant features performed on each ion mode separately [10].

Statistical analyses were conducted using the R Statistical Platform (v. 3.3.1) packages ‘xMSanalyzer,’ ‘apLCMS,’ and ‘limma’ [25–27]. Associations between TRP and the targeted biomarkers were conducted using linear mixed effect regression models described, in detail, previously [17]. HRM data were first log<sub>2</sub>-transformed before being analyzed using the R statistical package ‘limma.’ ‘Limma’ is designed to run mixed effects models on high dimensional data and moderate t-statistics using an empirical Bayes method for shrinking standard errors [26]. The package was created for RNA sequencing analyses; however, the data have structural similarities. For example, RNA sequencing data is a collection of color intensities at specific probes and spectral data is a collection of signal intensities at specific mass to charge ratios.

The chosen model specifications examine the associations between the fluxes of metabolomic profiles at 10 hours apart with either exposure during the ‘commute’ period or the flux of targeted biomarkers around the commute period. All models included categorical co-variates to control for the potential effects of asthma status, age, sex, body mass index (BMI), and race without explicit control of the exposure setting. We first modeled associations between pre- to post-exposure changes in metabolite intensities ( $\Delta Feature_{ij}$ ) and corresponding pollutant exposure metrics ( $Exposure_{ij}$ ) (Model 1). Directly measured pollutants, PM<sub>2.5</sub>, OC, BC, WSOC, pb-PAHs, PNC, noise, Al, Fe, and Pb, were examined, in turn, as continuous variables.

$$\Delta Feature_{ij} = \mu + \theta_i + \beta_1 Exposure_{ij} + \beta_2 Asthma_i + \beta_3 Age_i + \beta_4 Sex_i + \beta_5 BMI_i + \beta_6 Race_i + \epsilon_{ij}, \text{ (Model 1)}$$

where  $j$  indexes commute day,  $i$  indexes subject,  $\theta_i \sim N(0, \pi)$ ,  $\epsilon_{ij} \sim N(0, \sigma^2)$ , and  $\pi =$

$$\left( \frac{\sum_1^k \tau_i^2}{k} \right)_{15\%} \text{ -the trimmed mean of intra-individual variability.}$$

The second model examined associations between  $\Delta Feature_{ij}$  and corresponding pre- and post-exposure changes in eNO, FEV<sub>1</sub>, hs-CRP, TNF- $\alpha$ , IL-1 $\beta$ , IL-6, IL-8, sICAM, and sVCAM ( $\Delta Biomarker$ ) (Model 2).

$$\Delta Feature_{ij} = \mu + \theta_i + \beta_1 \Delta Biomarker_{ij} + \beta_2 Asthma_i + \beta_3 Age_i + \beta_4 Sex_i + \beta_5 BMI_i + \beta_6 Race_i + \epsilon_{ij}, \text{ (Model 2)}$$

where indexing of variables and errors are as described for Model 1.

Each set of results—defined by the combination of primary predictor and ion mode—contained  $p$ -values and moderated t-statistics for all  $\Delta Feature_{ij}$ . The  $p$ -values were adjusted for multiple comparisons using the Benjamini-Hotchberg false discovery rate ( $FDR_{B-H}$ ) at  $FDR_{B-H} < 0.05$  [28]. We used Manhattan plots of the  $-\log_{10}(p)$  over feature retention time with the average direction of change between post- and pre-exposure metabolite intensities as a means of visualizing significant associations from the mixed effects models.

### Human metabolic pathway enrichment and putative feature identification

We conducted pathway analysis using mummichog (v. 1.0.7) and ran separate analyses for each set of features from the linear mixed models using both positive and negative mode

features [29]. Mummichog takes provided features and tests modules of in predefined networks and the biological pathways to statistically test presence of significant features on networks of human metabolism, permitting increased confidence in feature identification. Lists of significant features from MWAS were identified with an  $FDR_{B-H} < 0.05$  and further restricted for peak quality by extracted ion chromatograph (EIC) filtering. The human reference pathway for mapping came from MetaFishNet [29], a compilation of KEGG, Edinburgh Human Metabolism Network, UCSD BiGG, and BioCyC network metabolism models. Matches to the pathways were made within 10 ppm to measured feature m/z ratios. Pathways were considered strong candidates if at least 3 nodes from the experimental data overlapped with pathway nodes and the mummichog permutation-based enrichment score,  $s$ , was less than 0.10. Human metabolic pathway enrichment results were compared within and across exposure and biomarker set lists for overlapping pathway enrichments.

## Results

Forty-nine of 60 participants (82%) in the ACE study provided venous blood over 73 different sampling days. Participants not contributing blood samples were those enrolled in the study prior to the approval of the venous blood collection protocol. Sixty-nine of those 73 sampling days (95%) were complete samplings, meaning blood was collected both pre- and post-exposure for the individual on a given sampling day. This subpopulation formed the final analytical subset, for whom matching respiratory, inflammatory, and oxidative stress markers were also available. Population characteristics and exposures are summarized in Table 1 and Table 2, respectively. Broadly and as reported previously [13, 17], exposures to many of the TRP exposures were elevated in commutes relative to ambient concentrations. Some particulate pollutants and noise differed between highway and non-highway commutes, but not metals or WSOC (Table 2).

Pre-commute concentrations of select plasma metabolites are provided in S2 Table, confirming reliability of metabolomic profiling because the concentrations of known metabolites were within previously reported levels in a human population [30]. Specific amino acids were above or below reported mean ranges in HMDB. Specifically, the study population comparatively lower in asparagine, citrulline, glutamine, leucine/isoleucine, and tryptophan while glutamate and proline were comparatively higher than HMDB values. Plasma concentrations of eight amino acids and carnitine differed between asthmatics and non-asthmatics. The MWAS of exposure included both positive (S4 and S5 Figs) and negative (Fig 1 and S3 Fig) ionization

**Table 1. Participant health characteristics.**

Participant Characteristics	
N	49
Age in years	26 (5)
Female	47%
Race	
White	64%
Asian	20%
Other	16%
Health Status	
BMI ( $\text{kg}\cdot\text{m}^{-2}$ )	23.15 (3.53)
Asthma Diagnosed	53%

Values are mean (SD), unless noted otherwise.

<https://doi.org/10.1371/journal.pone.0203468.t001>



**Table 2. Mean in-vehicle exposures by commute type.**

Exposure Characteristics	
Commute Type (N)	
Highway	36
Non-Highway	37
PM <sub>2.5</sub> (µg·m <sup>-3</sup> ) <sup>a</sup>	
Highway	17.14 (6.18)
Non-Highway	11.18 (8.58)
BC (µg·m <sup>-3</sup> ) <sup>a</sup>	
Highway	5.33 (2.23)
Non-Highway	1.58 (1.43)
OC (µg·m <sup>-3</sup> ) <sup>a</sup>	
Highway	7.66 (1.98)
Non-Highway	6.07 (1.70)
WSOC (µg·m <sup>-3</sup> )	
Highway	8.48 (3.75)
Non-Highway	7.95 (3.45)
PNC (#·m <sup>-3</sup> ) <sup>a</sup>	
Highway	34,808 (12,918)
Non-Highway	10,649 (8,147)
pb-PAH (µg·m <sup>-3</sup> ) <sup>a</sup>	
Highway	113.93 (30.51)
Non-Highway	65.21 (38.94)
Noise (dBA) <sup>a</sup>	
Highway	68.59 (2.73)
Non-Highway	58.40 (11.23)
Aluminum (Al) (ng·m <sup>-3</sup> )	
Highway	29.36 (28.67)
Non-Highway	24.37 (19.71)
Iron (Fe) (ng·m <sup>-3</sup> )	
Highway	176.33 (171.19)
Non-Highway	121.55 (115.99)
Lead (Pb) (ng·m <sup>-3</sup> )	
Highway	0.45 (0.45)
Non-Highway	0.92 (1.64)

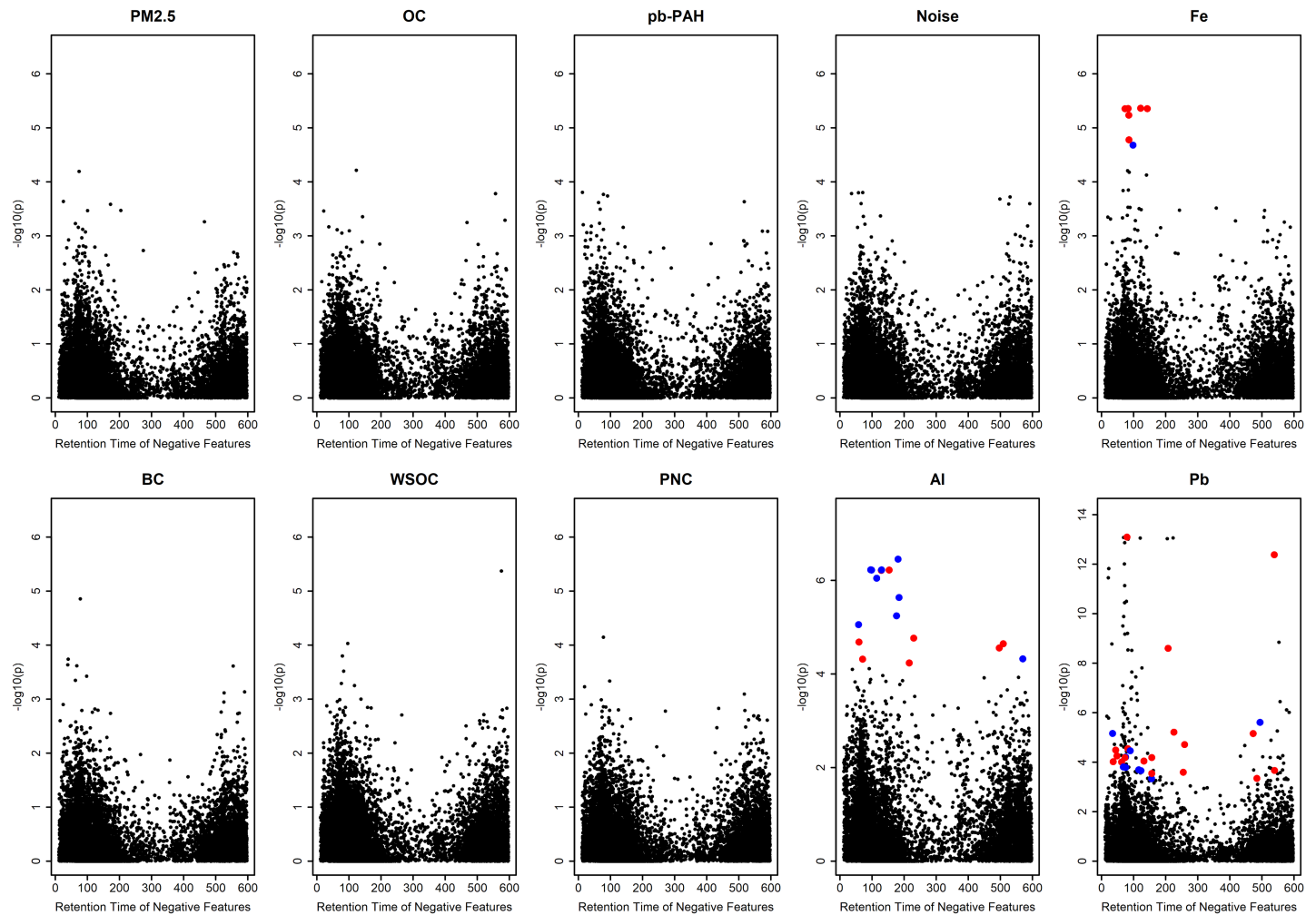
Values are mean (SD), unless noted otherwise.

<sup>a</sup>denotes  $p < 0.05$  for Student's  $t$  test

<https://doi.org/10.1371/journal.pone.0203468.t002>

modes. The positive mode captured 7,390 features with a median CoV of 13.5%. The negative mode included 14,341 detected features with a median CoV of 14.5%.

Associations between TRP and  $\Delta$ Biomarkers were largely consistent with the null (Table 3). Pb, however, was negatively associated with  $\Delta$ hs-CRP ( $\beta = -20.1\%$ ;  $p < 0.005$ ) and  $\Delta$ sICAM ( $\beta = -24.2\%$ ;  $p < 0.001$ ) indicating, on average, a 22% reduction in the acute phase protein and intercellular adhesion molecule-1 per 1 ng/m<sup>3</sup> increase in Pb exposure. We observed smaller reductions in  $\Delta$ IL-8 with increases in pb-PAH, PNC, and noise ( $p < 0.05$ ). We did not observe association with  $\Delta$ IL-6 and any of the exposure measures used. Notably, many IL-6 levels were distributed below analytic detection ( $n = 32$ , 46% below limit of detection) (S2 Table).



**Fig 1. Manhattan plots of associations between changes in negative ionization mode feature intensities with in-vehicle, traffic-related pollutants.** Colored points are significant at  $FDR_{B-H} < 0.05$  and indicate average increase (red) or decrease (blue) in feature intensity.

<https://doi.org/10.1371/journal.pone.0203468.g001>

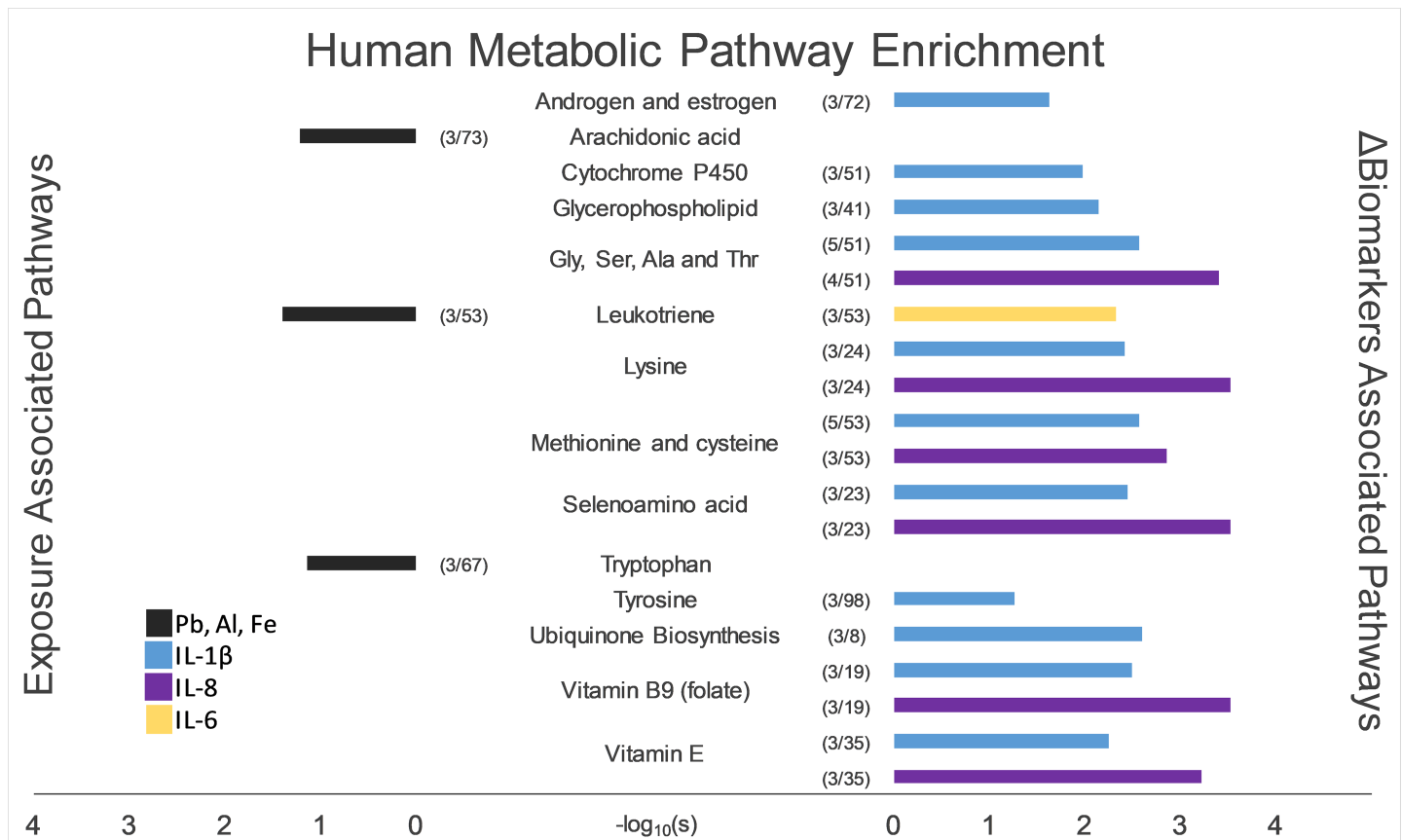
**Table 3. Percent change in biomarker per unit increase in exposure.**

	$\Delta$ hs-CRP	$\Delta$ TNF- $\alpha$	$\Delta$ IL1 $\beta$	$\Delta$ IL6	$\Delta$ IL8	$\Delta$ sICAM	$\Delta$ sVCAM	$\Delta$ eNO	$\Delta$ FEV1
BC	0.87	-2.09	-1.72	-2.18	-2.10	-0.08	0.50	-0.32	-0.32
OC	4.97	-1.53	-8.62	-6.35	-3.21	9.50	9.98	-2.02	-0.47
WSOC	1.88	2.29	-0.57	—	0.05	1.36	2.64	-0.27	0.12
pb-PAH	-0.10	-0.04	-0.16	-0.46	-0.23 <sup>a</sup>	-0.03	0.07	-0.06	-0.02
PNC	0.50	-0.08	<0.01	-0.78	-0.55 <sup>a</sup>	0.58	0.61	-0.20	<-0.01 <sup>a</sup>
Noise	-0.63	-0.77 <sup>a</sup>	-1.07	1.21	-0.80 <sup>a</sup>	-0.85	-0.54	-0.14	-0.02
Al	-0.05	-0.13	0.42	0.37	0.07	-0.30	-0.23	0.05	-0.02
Fe	-0.03	-0.04	0.01	-0.09	-0.01	-0.04	-0.02	<-0.01	-0.01
Pb	-20.14 <sup>a</sup>	0.84	-7.13	-5.15	0.81	-24.21 <sup>a</sup>	-31.09	-0.16	0.07

PNC % change reflect change in concentration in thousands (1,000s) of particles

<sup>a</sup>Indicates p-value significant at  $\alpha < 0.05$ ;—indicates a model that did not converge

<https://doi.org/10.1371/journal.pone.0203468.t003>

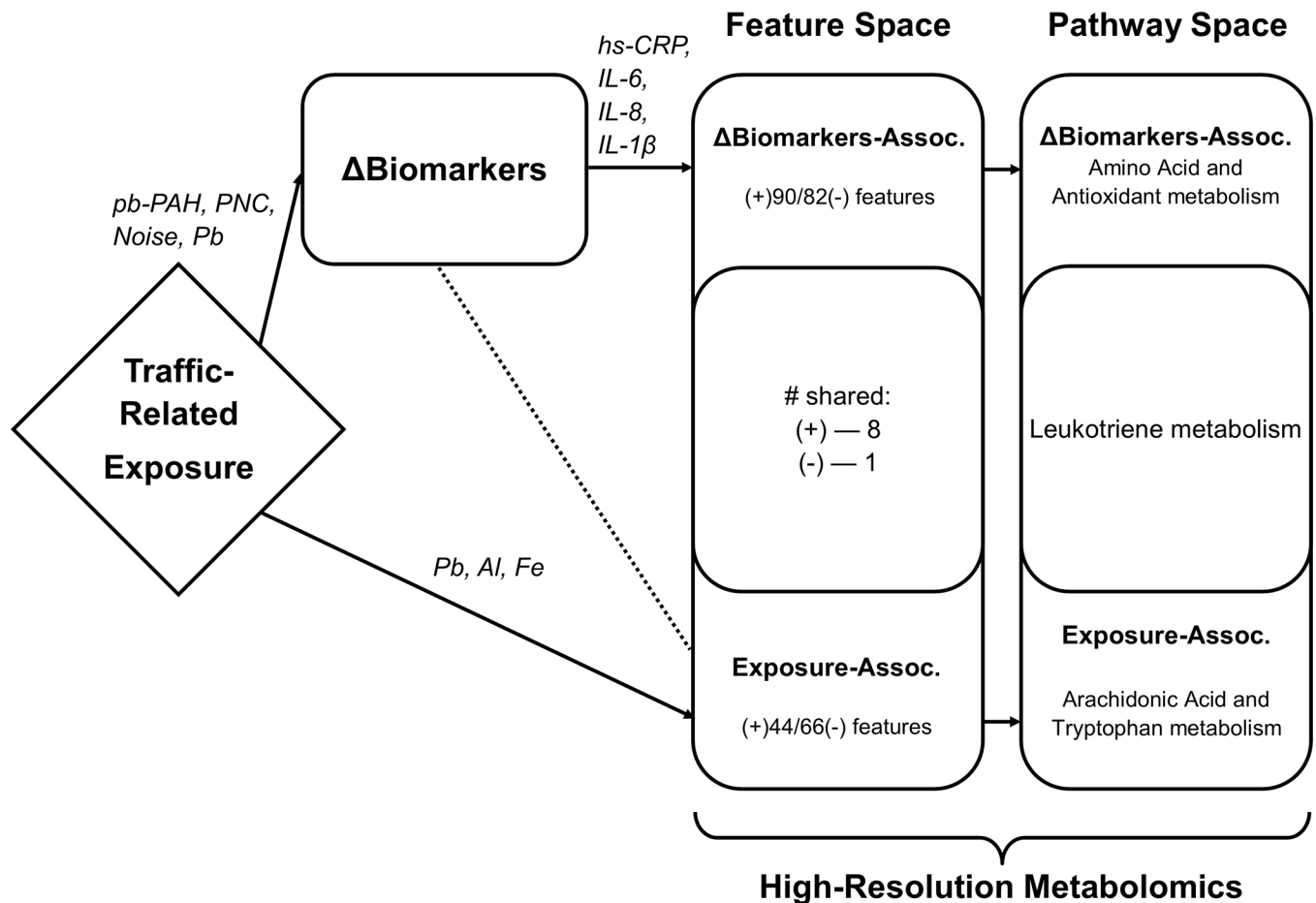


**Fig 2. Pathway enrichment of exposure-based (left) and biomarker-based (right) significant features.** Colored bars indicate the  $-\log_{10}(s)$  of enrichment scores from mummichog, a network-based pathway analysis tool. Numbers in parentheses indicate the ratio of matching features onto a human reference pathway.

<https://doi.org/10.1371/journal.pone.0203468.g002>

Many TRP exposures were not associated with  $\Delta\text{Feature}_{ij}$ ; however, concentrations of particulate metals Al, Fe, and Pb were associated ( $\text{FDR}_{\text{B-H}} < 0.05$ ) (Fig 1; S4 Fig). In the positive mode, 42 total features were associated with either Pb or Fe. MWAS of the negative mode identified 11, 6, and 91 features significantly associated ( $\text{FDR}_{\text{B-H}} < 0.05$ ) with Al, Fe, and Pb, respectively (Fig 1). Overall, the average change in concentrations showed a decrease from pre-commute levels for all metal-associated features. As a means of identification of these significant features, we matched the masses of the features with metabolic networks through a pathway analysis (Negative mode: Fig 2). Mummichog was unable to identify putative pathways with any statistical significance for Al-associated and Pb-associated features ( $p \sim 1.0$ ) from the positive mode nor converge for other pollutant models, likely due to the small number of features identified through the MWAS modeling. However, the negative mode features were more successful at mapping onto reference pathways. Al-associated features enriched for arachidonic acid and leukotriene biosynthesis. Three Al-associated features map onto the leukotriene biosynthesis pathway, which has a membership of 53 nodes ( $s < 0.04$ ). 20-OH-leukotriene B4 (molecular weight: 352.225 Da) was a top predicted metabolite and, on average, decreased in intensity in the population over time.

Prior to the pathway analysis, correlations of  $\Delta\text{Biomarkers}$  with significant features from the combined set of exposure-associated  $\Delta\text{Feature}_{ij}$  was conducted. We did not observe significant correlations with exposure-associated  $\Delta\text{Feature}_{ij}$  after multiple hypothesis test correction. However, in the  $\Delta\text{Biomarkers}$  MWAS, changes in pro-inflammatory cytokines and acute-



**Fig 3. Representation of combined results of MWAS and pathway enrichment of both Exposure and ΔBiomarkers.** Significant predictors or enriched pathways ( $p < 0.05$  or  $s < 0.10$ ) are explicitly named. Particulate metal exposures were the exclusive in-vehicle, traffic related pollutants associated with changes in 110 features of the plasma metabolome. Few significant features overlapped between Exposure-associated and ΔBiomarkers-associated features. Leukotriene metabolism was enriched from Al-associated features and ΔIL-6-associated features.

<https://doi.org/10.1371/journal.pone.0203468.g003>

phase hs-CRP, but not respiratory or lung oxidative stress markers, were associated with  $\Delta$ Feature<sub>ij</sub> (S3 Fig). IL-6, hs-CRP, IL-1 $\beta$ , and IL-8 had 60,47, 47, and 53 significant features across both ionization modes, respectively. There was substantial overlap in features between IL-6 and hs-CRP separately between IL-1 $\beta$  and IL-8. A single feature was shared across all four models. (S2 Fig). Enriched pathways associated with these biomarkers included amino acid metabolism, leukotriene metabolism, and ubiquinone biosynthesis.

We summarized the significant results schematically (Fig 3). Overlap between Exposure-associated and ΔBiomarkers-associated MWAS was minimal, showing very few shared features and only one shared, enriched pathway.

## Discussion

Ascertaining TRP components that elicit adverse health response has been challenging. The absence of exposure science tools capable of cost-effectively capturing both environmental exposures and biological responses in humans may be filled through HRM. In the present study, we augmented exposure characterization of an in-vehicle environment and biomonitoring of oxidative stress and inflammation in a small human panel with plasma HRM. A key

observation was the association between particulate metal exposures, especially Pb, with 2-hr changes in targeted inflammatory markers (hs-CRP and sICAM) and 10-hr associations with metabolic perturbations in lipid mediators of inflammation and nucleotide driven antioxidant. This is one of the first indications of a directly-measured traffic pollutant associated with changes in human metabolomic profiles. Moreover, we believe these current findings support the utility of HRM as creating multi-pollutant indicators of acute xenobiotic exposure within panel study designs [10, 31].

Collectively, we showed that enriched pathways overlap or are complementary to inflammatory and redox reactions (Fig 3). Three key insights arose from these data: 1) particulate metals or sources containing metals from a morning commute are consistent with an oxidative stress response; 2) functional analysis of significant metabolomic features showed 2-hr changes of inflammatory cytokines and acute-phase protein to be associated with antioxidant pathways; and 3) that, in this human panel, HRM reflected some acute effects of traffic exposure, provided a case-crossover design and a narrow temporal window.

Observed associations across exposures from MWAS suggest covariance between particulate metals in the traffic-related exposures. These metals may serve as tracers for a traffic-related dust source. Potential sources identified from commuter studies by our group include 'crustal', 'non-tailpipe emission', 'resuspended road dust', or 'brake pad and tire wear' as descriptors of components of the traffic pollution mixture in vehicle cabins. These similar, complex sources share qualities such as enrichment of Al, Fe, and transition metals [18, 21]. Combining both ACE commuter studies, Krall, et al., reported robust associations of 'non-tailpipe emissions'—enriched with several metals like Fe—with pulmonary response in the susceptible, asthmatic population. Together, these highlight the elevated presence of metals in a roadway commuting environments and the potential for these pollutants to elicit biological responses through oxidative stress.

Particulate metals have been identified as contributors to cardiovascular disease morbidity [32] and mortality [33]. Transition metals, such as Fe, are redox-active—where the metal ion can serve as both electron acceptor and donor in reactions to generate radical ions. Such metals can promote oxidative stress through redox cycling or quenching antioxidant capacity [34]. These toxic processes have demonstrated inductions by near roadway PM. Pardo, et al., found both PM extracts from a roadside monitor and a simulated metal solution, including Al, Fe, and Pb, increased IL-6 and TNF- $\alpha$  in murine bronchoalveolar fluid over a 24-hour period with returns to baseline by the 48-hr measurement [35]. In another mouse model, acute instillation of urban air particles (at 1mg/kg) resulted in 3-hr increases in TNF- $\alpha$  and IL-6 with resolution before a 24-hr measurement [36]. In contrast,  $\Delta$ TNF- $\alpha$  and  $\Delta$ IL-6 were not associated with any metal exposures in our commuting population, but Pb was associated with  $\Delta$ hs-CRP and  $\Delta$ sICAM. For each unit increase in Pb exposure, the percent change in these biomarkers averaged a 22% decrease over a 2-hr period. This decrease is contrary to expectation [37, 38]. One possible explanation may be the potential confluence of circadian patterns of inflammatory markers and the rapid resolution of inflammatory signaling [36] that may result in our observed depression. Our findings indicate that increased short-term metal exposures, specifically Pb, may be responsible for an acute inflammatory response that resolves within a 10-hr window in humans.

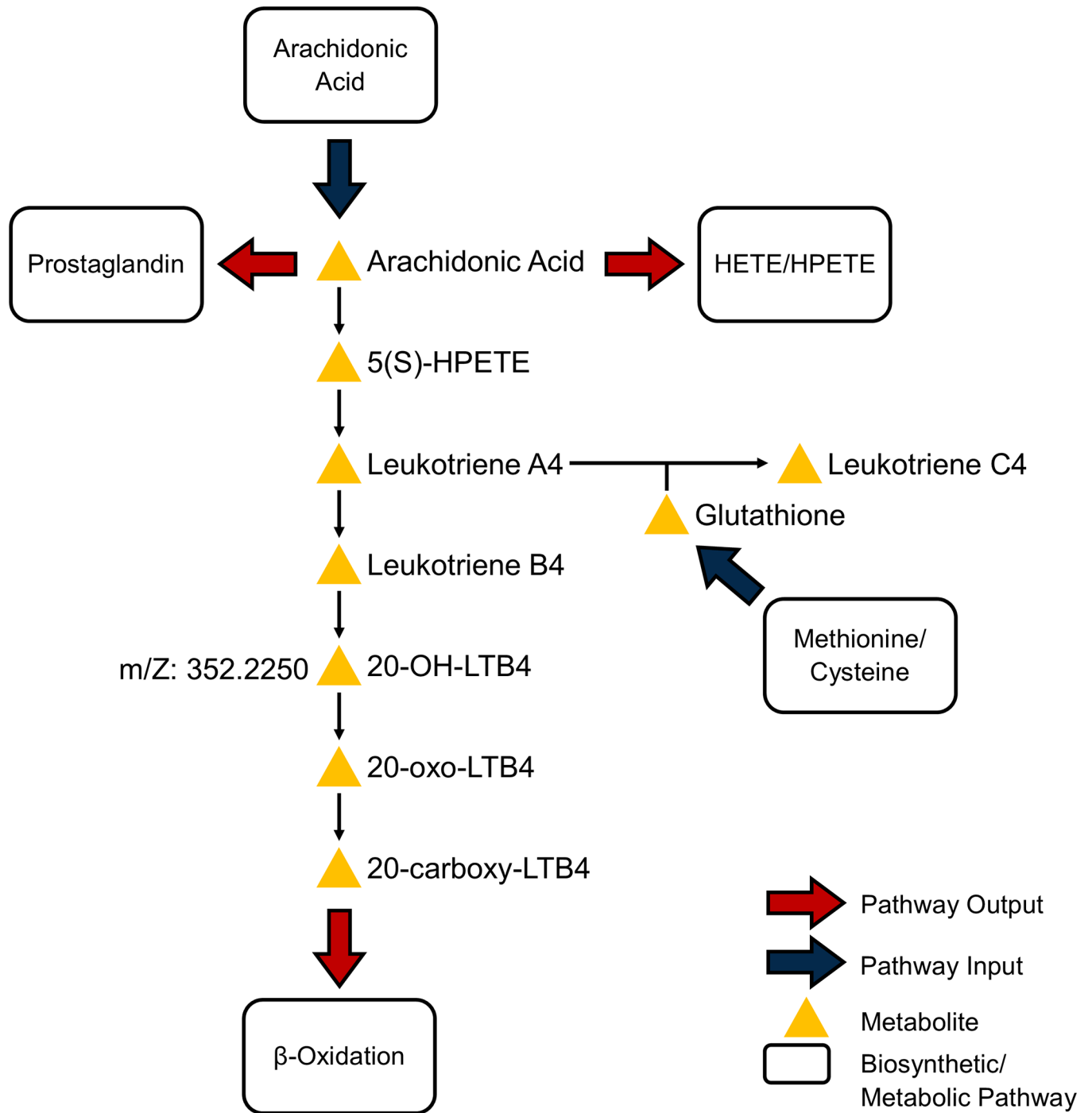
The metabolomics analyses suggest that a morning exposure to particulate metals elicit detectable perturbations in leukotriene, arachidonic acid, and tryptophan metabolism over a 10-hr period. Association of tryptophan metabolism with Pb exposures is consistent with the evidence of lead, although redox-inactive, participating in the depletion of antioxidants [34, 39]. While Al is also redox-inactive, it does demonstrate the ability to shift biological systems into oxidative stress [40]. Of Al-associated features, two (m/z: 350.2105 and 350.2102) drive

the enrichment of leukotriene and arachidonic acid pathways and suggest an average decrease of these features across the study population after controlling for potential confounders and asthma status over the 10-hr period. These two features match a metabolite of proinflammatory chemoattractant leukotriene B4 (LTB4): 20-OH-LTB4. IL-6-associated features also enriched for leukotriene pathways, providing a concordance with the exposure-based enrichments. Metabolites of LTB4, 20-OH-LTB4 and 12-oxo-10,11-dihydro-20-COOH-LTB4, were putatively identified in mummichog.

Leukotriene B4 in breath has been associated with the inflammatory response to traffic exposures [41], where long-term traffic exposures, assessed by land use regression models estimating exposure to PM<sub>2.5</sub>, were shown to be associated with increased LTB4 measured in induced sputum (2µg/m<sup>3</sup> PM<sub>2.5</sub>: ~23% CI<sub>95%</sub>(4%-42%) LTB4). Some attention has grown for leukotrienes in response to TRP exposures. Rabinovitch, et al., (2016) recently reported increases (24% CI<sub>95%</sub>(1.5%,51.5%)) in urinary cysteinyl leukotriene (LTE4) after very short-term exposures to PM<sub>2.5</sub> ≥ 5µg/m<sup>3</sup> in asthmatic children [42]. The cysteinyl leukotrienes, LTC4, LTD4, and LTE4, are created from the enzymatic reactions of LTA4 and glutathione (Fig 4). These leukotrienes operate extracellularly, binding to receptors of neighboring cells and promote vascular permeability [43]. Putatively identified 20-OH-LTB4 was associated with both AI exposures and ΔIL-6 in our metabolomics population. Δhs-CRP-associated features had substantial overlap with ΔIL-6-associated features (S2 Fig), and enriched for leukotriene metabolism, but not with at least 3 features mapping onto the pathway. Together, these results suggest inactivated leukotrienes in various forms are responsive to TRP exposure.

Outside of the metabolomics analysis, associations between TRP exposure and changes in targeted biomarkers (ΔBiomarkers) were not consistent between the entire ACE population and the subset for which plasma blood draws were available (*results not shown*). In the total ACE population, OC was the only pollutant associated with biomarkers in dried blood spots (Δhs-CRP and ΔsVCAM). This association was not reproduced in the blood draw subset. Other pollutants (pb-PAH, PNC, noise, and lead) were associated with ΔIL-8, ΔsICAM, Δhs-CRP, and ΔTNF-α in the blood draw subset and not in the total ACE population. This discrepancy is indicative of the challenges faced in air pollution studies focusing on hypothesized, targeted biomarkers of effect on inflammatory and oxidative stress pathways [3, 44]. Within our study, plausible reasons exist for the discrepancies between the full data and the subset including 1) the presence of false positives due sampling of whole blood after the already study began; 2) technician measurement error in sample handling and processing; or 3) the chance, natural variability of the markers measured. Despite these differences, the addition of HRM with our workflow afforded consistent insights by measuring changes in the human plasma metabolome (ΔFeature) at relevant time scales and capturing markers used in air pollution studies.

There are other caveats and limitations of this analysis that warrant attention and have the potential to inform future air pollution metabolomic study designs. Importantly, metabolic expression is sensitive to inter-personal variability [45]. We controlled, at least in part, for diurnal variation in biomarker levels, participant sex, age, asthma status, obesity, and metro Atlanta residency, although unspecified confounding may be still be present. Our choice to define ΔBiomarkers as the difference in measurements from pre-commute (7AM) to post-commute (9AM) was done to reduce the likelihood of capturing responses due to unmeasured exposures, especially since temporal trends in the cytokine markers were not significant from baseline measures [17]. Sartini, et al., demonstrated in an older male population that IL-6, a key measure of our study, increased almost linearly over a day but without relevant impact on cardiovascular disease risk [46]. In contrast, hs-CRP has been reported to be at most minimally associated with time of day [47, 48]. Repeated measures and contrasting exposures within



**Fig 4. Pathway of leukotriene biosynthesis and catabolism in humans.** Leukotriene metabolism was the only pathway to be enriched for in both exposure-based and biomarker-based models using mummichog (overlap  $\geq 3$  and  $s \leq 0.10$ ). The features selected with Al, Pb, and  $\Delta\Pi$ -6 models have overlapping matches on this pathway with 20-OH-LTB4. The metabolite putatively detected is a biologically inactive form of leukotriene B4. Arachidonic acid metabolism and glutathione synthesis feed into the pathway to generate the variety of signaling molecules on this pathway. Adapted from MetaCore by Thomson Reuters.

<https://doi.org/10.1371/journal.pone.0203468.g004>

study participants was a strength where changes in measurements over time can be explored with partitioning of inter- and intra-individual variability [49], and may have provided analytical improvement over cross-sectional analyses for causal inference [9].

The ACE study protocol included self-reported food intake over the study days, but did not explicitly control diet (except for the consumption of nitrate rich foods and leafy greens). Thus, aspects of diet may still contribute confounding. A future analysis may consider including dietary food logs, nutritional assessments, or standards of common foods known to promote pro-inflammatory responses in humans [50].

As a first step to using HRM in air pollution panel studies, our motivation was to find the strongest evidence of an environmental exposure predicting changes in the metabolomes. At the MWAS stage, features were significant if the FDR < 0.05 and their EICs indicated reasonable quality. For pathway enrichment, we again restricted our examination to pathways with 3 matching nodes and enrichment scores,  $s$ , < 0.10. Our stringent standards likely also hide greater breadth of true human metabolic response to TRP exposure. Relaxing the FDR criterion to < 0.20 would not have appreciably changed the results of our Exposure MWAS findings. However, relaxing the FDR of  $\Delta$ Biomarkers models would have greatly expanded the number of potential pathways to consider at the expense of specificity to traffic exposure.

Only three variables representing particulate metal exposures were associated with metabolic perturbations. Other widely used TRP parameters, such as PM<sub>2.5</sub> mass and PNC, had no association. We explored categorical exposures (e.g., Highway vs. Non-commute exposure scenario) (*data not shown*) and found no significant associations up to an FDR of < 0.20. In our view, rich exposure characterization, which included metal content, at the microenvironmental level aided in our discovery, but also spoke to the importance of actual pollutant measurement in similar human observation designs. Perturbations in plasma metabolomes as a result of ambient air pollution exposures have recently been reported using targeted [51] and untargeted [31] metabolomic profiling. The latter, like the current study, used repeated biological measures and detailed exposure characterization, including trace metal composition, to capture the dynamic nature of high-dimensional exposure and biological responses.

Finally, it is worth reiterating the interpretive challenges involved in an untargeted, HRM analysis. Extracted features are typically matched by  $m/z$  alone to annotation and network databases. This results in 'many-to-many' matches of features to compounds in the databases. For example, 2,716 features, less than 20% of the total supplied to mummichog ( $n = 14,282$ ) for Pb-based enrichment, matched 7,309 compounds on the human metabolic network. This expansion is then reduced by network analysis, vastly improving interpretability [29]. Nevertheless, there remains a large proportion of unknown metabolites that are changing in response to Pb exposure. Relatedly, the use of  $m/z$  alone for matching also belies degeneracy—the presence of isotopic versions of features. Two features may be isotopes of the same metabolite but may match to separate compounds in high-resolution online databases. However, in our approach, we filtered significant features from the MWAS through examination of extracted ion chromatograms. Annotation and pathway analysis was performed on features that had clear, dominant peaks with reasonable tolerance of isotopic peaks. We believe this served to reduce the chance of misspecification of feature annotation. Like others at the stage of pathway enrichment, our data provide strong suggestions of pathway level perturbations, but feature validation is ultimately necessary. Before the substantial investment in chemical standards and reanalysis of samples, examining correlations between leading features and hypothesized, observed outcomes may provide confidence in the putative identification of important compounds [52]. We explored the correlations of the putative 20-OH-LTB<sub>4</sub> features with the remainder of the measured metabolome and clinical changes in neutrophils or eosinophils from complete blood counts in our population and found no significant associations (*results not shown*). We found either no further support for leukotriene metabolite identifications, or, perhaps, observed changes that were subclinical and focused. Either definitive



identification of specific features using MS/MS or reliable reference standards can improve the certainty of our results.

Collectively, we believe the results of this analysis provide evidence that HRM can serve as a sensitive tool of external, air pollution exposures, when used within a quasi-experimental human panel. Our environmental measures went beyond standard air pollution sampling practices used in large population studies. These advantages in study design and data capture enhanced our ability to capture changes in human metabolism with respect to TRP exposure. While there is additional support in the air pollution literature of acute oxidative stress response in humans mediated via exposures to particulate metal exposures, detection of this response using metabolomic profiling around traffic related exposures warrants replication. The general inconsistencies of inflammatory markers and their associations with certain PM<sub>2.5</sub> components necessitate additional studies to provide added confidence in our current findings. For the purposes of bioeffect screening, plasma HRM was useful in providing interpretable results. Further study should improve upon repeated sampling of plasma with shorter windows and multi-day sampling after single exposures in a human population. If our metabolomic sampling of plasma echoed the sampling of dried blood spots—used for targeted biomarkers in this study—then perhaps pro- and anti-inflammatory processes associated with TRP can be tracked over time. Finally, while much of air pollution toxicology research focuses on proinflammatory markers of response, we show cause to study pro-resolving mediators as well. For example, targeting eicosanoids, specifically LTB<sub>4</sub>, in a future iteration of a traffic exposure metabolomics study may improve our understanding of the interplay of systemic inflammation in acute response.

## Conclusions

HRM can detect plausible changes in the plasma metabolome in response to traffic related pollution in a commuter panel study. In-vehicle particulate metal exposures were associated with within-day perturbations of several pathways; however, one metabolic pathway, leukotriene metabolism, was also associated to changes in proinflammatory cytokines.

## Supporting information

**S1 Table. Targeted biomarker levels at pre-commute measurement, by commute type.**  
(DOCX)

**S2 Table. Selected metabolite measures at pre-commute samplings.**  
(DOCX)

**S1 Fig. Venn diagram of features in negative mode ionization associated with variability in in-vehicle Al, Fe, and Pb exposures.**  
(PNG)

**S2 Fig. Venn diagram of features in negative mode ionization associated with pre- to post-exposure changes in inflammatory markers.**  
(PNG)

**S3 Fig. Manhattan plots of associations between changes in negative ionization mode feature intensities with changes in targeted biomarkers ( $\Delta$ Biomarkers).**  
(TIF)

**S4 Fig. Manhattan plots of associations between changes in positive ionization mode feature intensities with in-vehicle, traffic-related pollutants.**  
(TIF)

**S5 Fig. Manhattan plots of associations between changes in positive ionization mode feature intensities with changes in targeted biomarkers ( $\Delta$ Biomarkers).**

(TIF)

**S1 Datasets. Package file with exposure concentrations, positive ionization mode feature table, negative ionization mode feature table, and accompanying data dictionary.**

(ZIP)

## Acknowledgments

The authors extend their gratitude to the participants of this research. The presented research was supported by a Clean Air Research Center grant to Emory University and the Georgia Institute of Technology from the US Environmental Protection Agency (USEPA, RD834799) and the Human Exposome Research Center (HERCULES) (NIH, P30 ES019776). Shared instrumentation for metabolomics analysis was support through the National Institutes of Health (NIH, OD018006). CL acknowledges pre-doctoral support from a training grant (NIH, T32 ES012870-13) and the Burroughs Wellcome Fund through the Molecules the Mankind Doctoral Pathway at Emory University. RG gratefully acknowledges support by a post-doctoral fellowship from the Environment and Health Fund, Jerusalem, Israel. The content of this publication is solely the responsibility of the authors and does not necessarily represent the official views of the National Institutes of Health or the USEPA. Further, USEPA does not endorse the purchase of any commercial products or services mentioned in the publication.

## Author Contributions

**Conceptualization:** Chandresh Nanji Ladva, Jeremy A. Sarnat.

**Formal analysis:** Chandresh Nanji Ladva.

**Funding acquisition:** Jeremy A. Sarnat.

**Investigation:** Chandresh Nanji Ladva, Rachel Golan, Roby Greenwald, Amit U. Raysoni, ViLinh Tran.

**Methodology:** Chandresh Nanji Ladva, Donghai Liang, Douglas I. Walker, Tianwei Yu, W. Dana Flanders.

**Resources:** Dean P. Jones, Jeremy A. Sarnat.

**Software:** Karan Uppal.

**Supervision:** Tianwei Yu, W. Dana Flanders, Gary W. Miller, Dean P. Jones, Jeremy A. Sarnat.

**Visualization:** Chandresh Nanji Ladva.

**Writing – original draft:** Chandresh Nanji Ladva.

**Writing – review & editing:** Chandresh Nanji Ladva, Donghai Liang, Douglas I. Walker, Gary W. Miller, Jeremy A. Sarnat.

## References

1. Karagulian F, Belis CA, Dora CFC, Pruss-Ustun AM, Bonjour S, Adair-Rohani H, et al. Contributions to cities' ambient particulate matter (PM): A systematic review of local source contributions at global level. *Atmospheric Environment*. 2015; 120:475–83. <https://doi.org/10.1016/j.atmosenv.2015.08.087> WOS:000364255700049.

2. Pollution HPotHEoT-RA. Traffic-Related Pollution: A Critical Review of the Literature on Emissions, Exposure, and Health Effects. Boston, MA: Health Effects Institute, 2010 January 2010. Report No.: 17.
3. Steinvil A, Kordova-Biezuner L, Shapira I, Berliner S, Rogowski O. Short-term exposure to air-pollution and inflammation-sensitive biomarkers. *Environmental Research*. 2008; 106(1):51–61. <https://doi.org/10.1016/j.envres.2007.08.006> WOS:000252811300007. PMID: 17915210
4. Zora JE, Sarnat SE, Raysoni AU, Johnson BA, Li WW, Greenwald R, et al. Associations between urban air pollution and pediatric asthma control in El Paso, Texas. *Science of the Total Environment*. 2013; 448:56–65. <https://doi.org/10.1016/j.scitotenv.2012.11.067> WOS:000318132700007. PMID: 23312496
5. Brown MS, Sarnat SE, DeMuth KA, Brown LAS, Whitlock DR, Brown SW, et al. Residential Proximity to a Major Roadway Is Associated with Features of Asthma Control in Children. *Plos One*. 2012; 7(5):9. <https://doi.org/10.1371/journal.pone.0037044> WOS:000305341200036. PMID: 22615884
6. Bates JT, Weber RJ, Abrams J, Verma V, Fang T, Klein M, et al. Reactive Oxygen Species Generation Linked to Sources of Atmospheric Particulate Matter and Cardiorespiratory Effects. *Environmental Science & Technology*. 2015; 49(22):13605–12. <https://doi.org/10.1021/acs.est.5b02967> PMID: 26457347
7. Zanobetti A, Austin E, Coull BA, Schwartz J, Koutrakis P. Health effects of multi-pollutant profiles. *Environ Int*. 2014; 71:13–9. <http://dx.doi.org/10.1016/j.envint.2014.05.023>. PMID: 24950160
8. Ladva CN, Golan R, Greenwald R, Yu T, Sarnat SE, Flanders WD, et al. Metabolomic profiles of plasma, exhaled breath condensate, and saliva are correlated with potential for air toxics detection. *J Breath Res*. 2017. Epub 2017/08/16. <https://doi.org/10.1088/1752-7163/aa863c> PMID: 28808178.
9. Wang Z, Zheng Y, Zhao B, Zhang Y, Liu Z, Xu J, et al. Human metabolic responses to chronic environmental polycyclic aromatic hydrocarbon exposure by a metabolomic approach. *J Proteome Res*. 2015; 14(6):2583–93. <https://doi.org/10.1021/acs.jproteome.5b00134> PMID: 25990285.
10. Walker DI, Uppal K, Zhang LP, Vermeulen R, Smith M, Hu W, et al. High-resolution metabolomics of occupational exposure to trichloroethylene. *Int J Epidemiol*. 2016; 45(5):1517–27. Epub 2016/10/07. <https://doi.org/10.1093/ije/dyw218> WOS:000393184400025; PubMed Central PMCID: PMC45100622. PMID: 27707868
11. Vlaanderen JJ, Janssen NA, Hoek G, Keski-Rahkonen P, Barupal DK, Cassee FR, et al. The impact of ambient air pollution on the human blood metabolome. *Environmental Research*. 2017; 156:341–8. Epub 2017/04/10. <https://doi.org/10.1016/j.envres.2017.03.042> WOS:000403735300041. PMID: 28391173
12. Strak M, Janssen NAH, Godri KJ, Gosens I, Mudway IS, Cassee FR, et al. Respiratory Health Effects of Airborne Particulate Matter: The Role of Particle Size, Composition, and Oxidative Potential-The RAPTES Project. *Environmental Health Perspectives*. 2012; 120(8):1183–9. <https://doi.org/10.1289/ehp.1104389> WOS:000307260500032. PMID: 22552951
13. Sarnat JA, Golan R, Greenwald R, Raysoni AU, Kewada P, Winquist A, et al. Exposure to traffic pollution, acute inflammation and autonomic response in a panel of car commuters. *Environ Res*. 2014; 133:66–76. Epub 2014/06/07. <https://doi.org/10.1016/j.envres.2014.05.004> PMID: 24906070; PubMed Central PMCID: PMC4807398.
14. Ruckerl R, Schneider A, Hampel R, Breitner S, Cyrus J, Kraus U, et al. Association of novel metrics of particulate matter with vascular markers of inflammation and coagulation in susceptible populations—results from a panel study. *Environmental Research*. 2016; 150:337–47. <https://doi.org/10.1016/j.envres.2016.05.037> WOS:000382903100041. PMID: 27344265
15. Shi JJ, Chen RJ, Yang CY, Lin ZJ, Cai J, Xia YJ, et al. Association between fine particulate matter chemical constituents and airway inflammation: A panel study among healthy adults in China. *Environmental Research*. 2016; 150:264–8. <https://doi.org/10.1016/j.envres.2016.06.022> WOS:000382903100033. PMID: 27340812
16. Mirabelli MC, Golan R, Greenwald R, Raysoni AU, Holguin F, Kewada P, et al. Modification of Traffic-related Respiratory Response by Asthma Control in a Population of Car Commuters. *Epidemiology*. 2015; 26(4):546–55. <https://doi.org/10.1097/EDE.0000000000000296> PMID: 25901844; PubMed Central PMCID: PMC4516050.
17. Golan R, Ladva C, Greenwald R, Krall JR, Raysoni AU, Kewada P, et al. Acute pulmonary and inflammatory response in young adults following a scripted car commute. *Air Quality, Atmosphere & Health*. 2017. <https://doi.org/10.1007/s11869-017-0530-8>
18. Krall JR, Ladva CN, Russell AG, Golan R, Peng X, Shi G, et al. Source-specific pollution exposure and associations with pulmonary response in the Atlanta Commuters Exposure Studies. *Journal of Exposure Science & Environmental Epidemiology*. 2018. Epub 2018/01/05. <https://doi.org/10.1038/s41370-017-0016-7> PMID: 29298976.
19. Vreeland H, Weber R, Bergin M, Greenwald R, Golan R, Russell AG, et al. Oxidative potential of PM<sub>2.5</sub> during Atlanta rush hour: Measurements of in-vehicle dithiothreitol (DTT) activity. *Atmospheric Environment*. 2017; 165:169–78. <https://doi.org/10.1016/j.atmosenv.2017.06.044> WOS:000407665500015.

20. Golan R, Ladva CN, Greenwald R, Raysoni AU, Liang D, Winquist A, et al. Acute Pulmonary and Inflammatory Response in Young Adults following a Scripted Car Commute. *Air Quality Atmosphere and Health*. 2017;(Abstracts of the 2015 Conference of the International Society of Environmental Epidemiology (ISEE)). PubMed Central PMCID: PMC2015.
21. Greenwald R, Bergin MH, Yip F, Boehmer T, Kewada P, Shafer MM, et al. On-Roadway In-Cabin Exposure to Particulate Matter: Measurement Results Using Both Continuous and Time-Integrated Sampling Approaches. *Aerosol Sci Technol*. 2014; 48(6):664–75. <https://doi.org/10.1080/02786826.2014.912745> WOS:000335860400004.
22. Soltow QA, Strobel FH, Mansfield KG, Wachtman L, Park Y, Jones DP. High-performance metabolic profiling with dual chromatography-Fourier-transform mass spectrometry (DC-FTMS) for study of the exposome. *Metabolomics*. 2013; 9(1 Suppl):S132–S43. <https://doi.org/10.1007/s11306-011-0332-1> PMID: 26229523; PubMed Central PMCID: PMCPMC4517297.
23. Accardi CJ, Walker DI, Uppal K, Quyyumi AA, Rohrbeck P, Pennell KD, et al. High-Resolution Metabolomics for Nutrition and Health Assessment of Armed Forces Personnel. *J Occup Environ Med*. 2016; 58(8 Suppl 1):S80–8. <https://doi.org/10.1097/JOM.0000000000000770> PMID: 27501108.
24. Yu T, Park Y, Li S, Jones DP. Hybrid feature detection and information accumulation using high-resolution LC-MS metabolomics data. *J Proteome Res*. 2013; 12(3):1419–27. <https://doi.org/10.1021/pr301053d> PMID: 23362826; PubMed Central PMCID: PMCPMC3624888.
25. Uppal K, Soltow QA, Strobel FH, Pittard WS, Gemert KM, Yu T, et al. xMSanalyzer: automated pipeline for improved feature detection and downstream analysis of large-scale, non-targeted metabolomics data. *BMC Bioinformatics*. 2013; 14:15. <https://doi.org/10.1186/1471-2105-14-15> PMID: 23323971; PubMed Central PMCID: PMCPMC3562220.
26. Ritchie ME, Phipson B, Wu D, Hu YF, Law CW, Shi W, et al. limma powers differential expression analyses for RNA-sequencing and microarray studies. *Nucleic Acids Res*. 2015; 43(7):13. <https://doi.org/10.1093/nar/gkv007> WOS:000354722500005. PMID: 25605792
27. Yu T, Jones DP. Improving peak detection in high-resolution LC/MS metabolomics data using preexisting knowledge and machine learning approach. *Bioinformatics*. 2014; 30(20):2941–8. <https://doi.org/10.1093/bioinformatics/btu430> PMID: 25005748; PubMed Central PMCID: PMCPMC4184266.
28. Benjamini Y, Hochberg Y. On the adaptive control of the false discovery rate in multiple testing with independent statistics. *J Educ Behav Stat*. 2000; 25(1):60–83. <https://doi.org/10.3102/10769986025001060> WOS:000087561900004.
29. Li SZ, Park Y, Duraisingham S, Strobel FH, Khan N, Soltow QA, et al. Predicting Network Activity from High Throughput Metabolomics. *PLoS Comput Biol*. 2013; 9(7):11. <https://doi.org/10.1371/journal.pcbi.1003123> WOS:000322320200011. PMID: 23861661
30. Wishart DS, Jewison T, Guo AC, Wilson M, Knox C, Liu Y, et al. HMDB 3.0—The Human Metabolome Database in 2013. *Nucleic Acids Res*. 2013; 41(Database issue):D801–7. <https://doi.org/10.1093/nar/gks1065> PMID: 23161693; PubMed Central PMCID: PMCPMC3531200.
31. Vlaanderen J, Janssen N, Hoek G, Keski-Rahkonen P, Barupal D, Cassee F, et al. The impact of ambient air pollution on the human blood metabolome. *Environmental Research*. 2017; 156:341–8. Epub 2017/04/10. <https://doi.org/10.1016/j.envres.2017.03.042> PMID: 28391173.
32. Sarnat SE, Winquist A, Schauer JJ, Turner JR, Sarnat JA. Fine particulate matter components and emergency department visits for cardiovascular and respiratory diseases in the St. Louis, Missouri-Illinois, metropolitan area. *Environ Health Perspect*. 2015; 123(5):437–44. <https://doi.org/10.1289/ehp.1307776> PMID: 25575028; PubMed Central PMCID: PMCPMC4421761.
33. Brook RD, Rajagopalan S, Pope CA, Brook JR, Bhatnagar A, Diez-Roux AV, et al. Particulate Matter Air Pollution and Cardiovascular Disease An Update to the Scientific Statement From the American Heart Association. *Circulation*. 2010; 121(21):2331–78. <https://doi.org/10.1161/CIR.0b013e3181d8e1> WOS:000278213100012. PMID: 20458016
34. Valko M, Jomova K, Rhodes CJ, Kuca K, Musilek K. Redox- and non-redox-metal-induced formation of free radicals and their role in human disease. *Archives of Toxicology*. 2016; 90(1):1–37. <https://doi.org/10.1007/s00204-015-1579-5> WOS:000370196900001. PMID: 26343967
35. Pardo M, Shafer MM, Rudich A, Schauer JJ, Rudich Y. Single Exposure to near Roadway Particulate Matter Leads to Confined Inflammatory and Defense Responses: Possible Role of Metals. *Environmental Science & Technology*. 2015; 49(14):8777–85. <https://doi.org/10.1021/acs.est.5b01449> WOS:000358557900059. PMID: 26121492
36. Orona NS, Ferraro SA, Astort F, Morales C, Brites F, Boero L, et al. Acute exposure to Buenos Aires air particles (UAP-BA) induces local and systemic inflammatory response in middle-aged mice: A time course study. *Environmental Pollution*. 2016; 208:261–70. <https://doi.org/10.1016/j.envpol.2015.07.020> WOS:000368306400032. PMID: 26255684

37. Ghio AJ, Devlin RB. Inflammatory lung injury after bronchial instillation of air pollution particles. *American Journal of Respiratory and Critical Care Medicine*. 2001; 164(4):704–8. WOS:000170816900035. <https://doi.org/10.1164/ajrccm.164.4.2011089> PMID: 11520740
38. Riva DR, Magalhaes CB, Lopes AA, Lancas T, Mauad T, Malm O, et al. Low dose of fine particulate matter (PM<sub>2.5</sub>) can induce acute oxidative stress, inflammation and pulmonary impairment in healthy mice. *Inhalation Toxicology*. 2011; 23(5):257–67. <https://doi.org/10.3109/08958378.2011.566290> WOS:000289797700002. PMID: 21506876
39. Matovic V, Buha A, Dukic-Cosic D, Bulat Z. Insight into the oxidative stress induced by lead and/or cadmium in blood, liver and kidneys. *Food Chem Toxicol*. 2015; 78:130–40. <https://doi.org/10.1016/j.fct.2015.02.011> WOS:000352663400017. PMID: 25681546
40. Verstraeten S, Aimo L, Oteiza P. Aluminium and lead: molecular mechanisms of brain toxicity. *Archives of Toxicology*. 2008; 82(11):789–802. <https://doi.org/10.1007/s00204-008-0345-3> WOS:000261422200002. PMID: 18668223
41. Vossoughi M, Schikowski T, Vierkotter A, Sugiri D, Hoffmann B, Teichert T, et al. Air pollution and sub-clinical airway inflammation in the SALIA cohort study. *Immunity & Ageing*. 2014;11. <https://doi.org/10.1186/1742-4933-11-5> WOS:000335058300002. PMID: 24645673
42. Rabinovitch N, Adams CD, Strand M, Koehler K, Volckens J. Within-microenvironment exposure to particulate matter and health effects in children with asthma: a pilot study utilizing real-time personal monitoring with GPS interface. *Environmental Health*. 2016; 15. <https://doi.org/10.1186/s12940-016-0181-5> WOS:000385445500001. PMID: 27724963
43. Lewis RA, Austen KF. The biologically active leukotrienes. Biosynthesis, metabolism, receptors, functions, and pharmacology. *The Journal of Clinical Investigation*. 1984; 73(4):889–97. <https://doi.org/10.1172/JCI111312> PMID: 6323538
44. Neophytou AM, Hart JE, Cavallari JM, Smith TJ, Dockery DW, Coull BA, et al. Traffic-related exposures and biomarkers of systemic inflammation, endothelial activation and oxidative stress: a panel study in the US trucking industry. *Environmental Health*. 2013; 12:10. <https://doi.org/10.1186/1476-069X-12-10> PubMed PMID: WOS:000330284100001.
45. Walker DI, Go Y-M, Liu K, Pennell KD, Jones DP. Chapter 7—Population Screening for Biological and Environmental Properties of the Human Metabolic Phenotype: Implications for Personalized Medicine. *Metabolic Phenotyping in Personalized and Public Healthcare*. Boston: Academic Press; 2016. p. 167–211.
46. Sartini C, Whincup PH, Wannamethee SG, Jefferis BJ, Lennon L, Lowe GDO, et al. Associations of time of day with cardiovascular disease risk factors measured in older men: results from the British Regional Heart Study. *BMJ Open*. 2017; 7(11):e018264. <https://doi.org/10.1136/bmjopen-2017-018264> PMC5695475. PMID: 29133328
47. Meier-Ewert HK, Ridker PM, Rifai N, Price N, Dinges DF, Mullington JM. Absence of Diurnal Variation of C-Reactive Protein Concentrations in Healthy Human Subjects. *Clinical Chemistry*. 2001; 47(3):426. PMID: 11238292
48. Rudnicka AR, Rumley A, Lowe GD, Strachan DP. Diurnal, seasonal, and blood-processing patterns in levels of circulating fibrinogen, fibrin D-dimer, C-reactive protein, tissue plasminogen activator, and von Willebrand factor in a 45-year-old population. *Circulation*. 2007; 115(8):996–1003. Epub 2007/02/14. <https://doi.org/10.1161/CIRCULATIONAHA.106.635169> PMID: 17296859.
49. Janes H, Sheppard L, Shepherd K. Statistical Analysis of Air Pollution Panel Studies: An Illustration. *Ann Epidemiol*. 2008; 18(10):792–802. <https://doi.org/10.1016/j.annepidem.2008.06.004> WOS:000260022200008. PMID: 18922395
50. Scalbert A, Brennan L, Fiehn O, Hankemeier T, Kristal BS, van Ommen B, et al. Mass-spectrometry-based metabolomics: limitations and recommendations for future progress with particular focus on nutrition research. *Metabolomics*. 2009; 5(4):435–58. <https://doi.org/10.1007/s11306-009-0168-0> WOS:000272849800006. PMID: 20046865
51. Ward-Caviness CK, Breitner S, Wolf K, Cyrus J, Kastenmuller G, Wang-Sattler R, et al. Short-term NO<sub>2</sub> exposure is associated with long-chain fatty acids in prospective cohorts from Augsburg, Germany: results from an analysis of 138 metabolites and three exposures. *Int J Epidemiol*. 2016; 45(5):1528–38. <https://doi.org/10.1093/ije/dyw247> WOS:000393184400026. PMID: 27892410
52. Walker DI, Mallon TM, Hopke PK, Uppal K, Go YM, Rohrbeck P, et al. Deployment-Associated Exposure Surveillance With High-Resolution Metabolomics. *J Occup Environ Med*. 2016; 58(8):S12–S21. <https://doi.org/10.1097/jom.0000000000000768> WOS:000386345100003. PMID: 27501099