

2022

## New Model for Discussing the Diffusion Phenomena Effect on a Thermoelastic Plate Associated With Three-phase Lag

M. A. Abdou

*Mathematics Department, Faculty of Education, Alexandria University, Alexandria, Egypt,*  
emanebraheem84@yahoo.com

E. M. Abo-Eldahab

*Mathematics Department, Faculty of Science, Helwan University, Cairo, Egypt,*  
emanebraheem84@yahoo.com

M. K. Ammar

*Mathematics Department, Faculty of Science, Helwan University, Cairo, Egypt,*  
emanebraheem84@yahoo.com

E. Ibrahim

*Mathematics Department, Faculty of Science, Helwan University, Cairo, Egypt,*  
emanebraheem84@yahoo.com

Follow this and additional works at: <https://digitalcommons.aaru.edu.jo/isl>

---

### Recommended Citation

A. Abdou, M.; M. Abo-Eldahab, E.; K. Ammar, M.; and Ibrahim, E. (2022) "New Model for Discussing the Diffusion Phenomena Effect on a Thermoelastic Plate Associated With Three-phase Lag," *Information Sciences Letters*: Vol. 11 : Iss. 6 , PP -.

Available at: <https://digitalcommons.aaru.edu.jo/isl/vol11/iss6/23>

This Article is brought to you for free and open access by Arab Journals Platform. It has been accepted for inclusion in Information Sciences Letters by an authorized editor. The journal is hosted on Digital Commons, an Elsevier platform. For more information, please contact [rakan@aarj.edu.jo](mailto:rakan@aarj.edu.jo), [marah@aarj.edu.jo](mailto:marah@aarj.edu.jo), [u.murad@aarj.edu.jo](mailto:u.murad@aarj.edu.jo).

# New Model for Discussing the Diffusion Phenomena Effect on a Thermoelastic Plate Associated With Three-phase Lag

M. A. Abdou<sup>1</sup>, E. M. Abo-Eldahab<sup>2</sup>, M. K. Ammar<sup>2</sup> and E. Ibrahim<sup>2,\*</sup>

<sup>1</sup>Mathematics Department, Faculty of Education, Alexandria University, Alexandria, Egypt

<sup>2</sup>Mathematics Department, Faculty of Science, Helwan University, Cairo, Egypt

Received: 21 May 2022, Revised: 22 Jun. 2022, Accepted: 24 Jul. 2022.

Published online: 1 Nov. 2022.

**Abstract:** Here, a new model was used to discuss the effect of a magnetic field on an isotropic, homogeneous, elastic material with generalized thermoelastic diffusion with two-temperature using a new technique. Most researchers in this domain discussed the behavior of the solution depending on two ways: the Laplace method and the normal mode method. Those two methods fail in explaining some of the physical meaning of the problems, especially the behavior of time. On the other hand, the separation of variables method solves the system of equations and gets the analytical solution directly. Copper material is used to discuss the results found in some detail. Comparisons are made in the presence and absence of a magnetic field.

**Keywords:** Thermoelastic diffusion, Three-phase-lag, Time function, Magnetic Field.

## 1 Introduction

The attention of most researchers has been drawn to studying the generalized thermo elasticity theories due to their relations with many practical applications. The researches on this topic are now obtainable and we can recall some recent interesting researches in [1-3].

Some problems of thermoelastic diffusion in solid materials are discussed in [4-7]. Problems with one relaxation time under the effect of diffusion were solved in [8-9]. Two- temperature theory was discussed in [10-12].

Magnetic field and initial stress under two-temperature discussed in [13]. A new mathematical model of equations was discussed in [14]. The effect of magnetic field and some fields investigated in [15-16]. Three Phase Lag theory and its stability were discussed in [17-18]. Two-dimensional problems are discussed under the theory of Three Phase Lag under some theories discussed in [19-20].

Most of the researches in this domain investigated the behavior of the physical quantities in two ways. The first way is using the Normal Mode method, which is based on the general form of the solution. The time was supposed to be imaginary, which does not give accurate physical meanings to the problems, see [21-22].

The second way is using Laplace Integral Method to separate the time and then discuss the behavior of the solution. This method has two defaults, one is it fails when the inverse of Laplace transform is difficult. The second fail

is not obtaining directly, the function of time, see [23-24].

We adopt a new method in this study to investigate the influence of two-temperature and diffusion on a thermoelastic plate in two dimensions using the Three-Phase-Lag model in the presence and absence of a magnetic field. The general solutions of the physical quantities, under specific boundary conditions of the problem, were found in some detail.

## 2 Nomenclature

$\sigma_{ij}$	Stress tensor components
$e_{ij}$	Strain tensor components
$e = e_{kk}$	Dilatation cubic
$\delta_{ij}$	Kronecker's delta
$u, v$	Vectors of displacement
$T$	Thermodynamic Temperature
$T_o$	Reference Temperature $ (T - T_o) / T_o  < 1$
$\varphi$	Conductive temperature
$P$	Chemical potential
$C$	Distribution of concentration
$\lambda, \mu$	Lame's constants
$\rho$	Density
$\gamma = (3\lambda + 2\mu)\alpha_t, \alpha_t$	Linear thermal expansion coefficient

\*Corresponding author e-mail: [emanebraheem84@yahoo.com](mailto:emanebraheem84@yahoo.com)

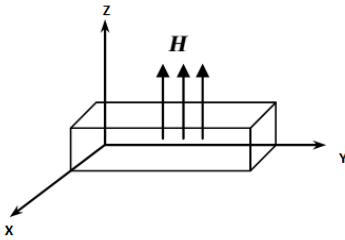
$\beta_1 = (3\lambda + 2\mu)\alpha_c, \alpha_c$  – Diffusion thermal expansion coefficient

- $C_E$  Constant strain at Specific heat
- $K$  Thermal conductivity coefficient
- $K^*$  Material characteristic
- $\tau_v$  Thermal displacement gradient
- $\tau_q$  Phase lag of Heat flux
- $\tau_T$  Phase lag of temperature gradient
- $a$  The measure of thermoelastic diffusion effects constant
- $b_1$  The measure of diffusive effects constant
- $d$  Constant of thermoelastic diffusion
- $\tau$  Relaxation time of diffusion
- $\mu_o$  Magnetic permeability
- $\epsilon_o$  Electric permeability
- $\dot{u}$  Velocity of particle
- $F_i$  Lorentz force

$$\nabla^2 = \frac{\partial^2}{\partial x^2} + \frac{\partial^2}{\partial y^2}$$

### 3 Basic equations

Consider the case of a two-temperature isotropic, homogeneous thermoelastic half-space under the influence of diffusion and a magnetic field. As seen in Fig. 1, an initial constant magnetic field  $\mathbf{H}=(0,0,H_o)$  causes induced magnetic  $\mathbf{h}$  and electric  $\mathbf{E}$  fields



$$\text{curl } \mathbf{h} = \mathbf{J} + \epsilon_o \dot{\mathbf{E}}, \tag{1}$$

$$\text{curl } \mathbf{E} = -\mu_o \dot{\mathbf{h}}, \tag{2}$$

$$\text{div } \mathbf{h} = 0, \tag{3}$$

$$\mathbf{E} = -\mu_o (\dot{\mathbf{u}} \times \mathbf{H}). \tag{4}$$

The equations of constitutive relations

$$\sigma_{ij} = 2\mu e_{ij} + \delta_{ij} [\lambda e - \gamma(T - T_o) - \beta_1 C], \tag{5}$$

$$P = -\beta_1 e + b_1 C - a(T - T_o), \tag{6}$$

$$e_{ij} = \frac{1}{2}(u_{i,j} + u_{j,i}). \tag{7}$$

In the absence of body force, the equation of motion is

$$\rho \ddot{u}_i = \sigma_{ij,j} + F_i, \tag{8}$$

Where,

$$F_i = \mu_o (\mathbf{J} \times \mathbf{H}). \tag{9}$$

Mass diffusion equation

$$d\beta_1 \nabla^2 e + da \nabla^2 T + \dot{C} + \tau \ddot{C} - db \nabla^2 C = 0. \tag{10}$$

The heat conduction equation

$$K^* \nabla^2 \phi + \tau_v^* \nabla^2 \dot{\phi} + K \tau_t \nabla^2 \ddot{\phi} = (1 + \tau_q \frac{\partial}{\partial t} + \frac{\tau_q^2}{2!} \frac{\partial^2}{\partial t^2}) [\rho C_E \ddot{T} + \gamma T_o \ddot{e} + a T_o \ddot{C}], \tag{11}$$

Where,

$$\tau_v^* = (K + K^* \tau_v).$$

The two-temperature equation is as follows:

$$T = (1 - b \nabla^2) \phi. \tag{12}$$

Notice that the symbols are defined in the nomenclature.

### 4 Formulation of the problem

In this paper, all quantities are functions of the coordinates  $x$  and  $y$  and the time variable  $t$ , such that

$$\bar{u} = (u, v, 0). \tag{13}$$

The stress functions take the forms

$$\sigma_{xx} = A \frac{\partial u}{\partial x} + \lambda \frac{\partial v}{\partial y} - \gamma T - \beta_1 C, \tag{14}$$

$$\sigma_{yy} = A \frac{\partial v}{\partial y} + \lambda \frac{\partial u}{\partial x} - \gamma T - \beta_1 C, \tag{15}$$

$$\sigma_{xy} = \mu (\frac{\partial u}{\partial y} + \frac{\partial v}{\partial x}). \tag{16}$$

Then, Eq.(8) can be written as

$$\rho \ddot{u} = A \frac{\partial^2 u}{\partial x^2} + B \frac{\partial^2 v}{\partial x \partial y} + \mu \frac{\partial^2 u}{\partial y^2} - \gamma(1 - b \nabla^2) \phi_{,x} \tag{17}$$

$$-\beta_1 C_{,x} - \mu_o H_o \frac{\partial h}{\partial x} - \mu_o^2 \epsilon_o H_o^2 \ddot{u},$$

$$\rho \ddot{v} = A \frac{\partial^2 v}{\partial y^2} + B \frac{\partial^2 u}{\partial x \partial y} + \mu \frac{\partial^2 v}{\partial x^2} - \gamma(1 - b \nabla^2) \varphi_{,y} \tag{18}$$

$$- \beta_1 C_{,y} - \mu_o H_o \frac{\partial h}{\partial y} - \mu_o^2 \epsilon_o H_o^2 \ddot{v}.$$

Where

$$A = \lambda + 2\mu, \text{ and } B = \lambda + \mu.$$

For aim of numerical evaluation, we introduced some dimensionless quantities

$$(x', y', u', v') = c_1 \eta(x, y, u, v),$$

$$(t', \tau', \tau'_T, \tau'_q, \tau'_v) = c_1^2 \eta(t, \tau, \tau_T, \tau_q, \tau_v), P' = \frac{P}{\beta_1}$$

$$C' = \frac{\beta_1}{A} C, \sigma'_{ij} = \frac{\sigma_{ij}}{A}, (T', \varphi') = \frac{\gamma}{A} (T, \varphi),$$

$$b' = c_1^2 \eta^2 b, h' = \frac{h}{H_o}, \eta = \rho C_E / K \text{ and}$$

$$c_1^2 = A / \rho. \tag{19}$$

Defining the displacement components in terms of potential functions  $q(x, y, t)$  and  $\psi(x, y, t)$  are

$$u = q_{,x} - \psi_{,y}, v = q_{,y} + \psi_{,x}. \tag{20}$$

Eqs. (10), (11), (17), and (18) can be written as using Eqs. (19) and (20). (after suppressing the primes)

$$\nabla^4 q + a_1(1 - b \nabla^2) \nabla^2 \varphi + a_2 \dot{C} + \tau a_2 \ddot{C} - a_3 \nabla^2 C = 0, \tag{21}$$

$$a_4 \nabla^2 \varphi + (1 + a_4 \tau_v) \nabla^2 \dot{\varphi} + \tau_T \nabla^2 \ddot{\varphi} = (1 + \tau_q \frac{\partial}{\partial t} + \frac{1}{2} \tau_q^2 \frac{\partial^2}{\partial t^2}) [(1 - b \nabla^2) \ddot{\varphi} + a_5 \nabla^2 \dot{\varphi} + a_6 \ddot{C}], \tag{22}$$

$$a_7 \ddot{q} = a_{12} \nabla^2 q - (1 - b \nabla^2) \varphi - C, \tag{23}$$

$$a_7 \ddot{\psi} = a_{10} \nabla^2 \psi, \tag{24}$$

In the same way, we can get the stress functions in the dimensional form

$$\sigma_{xx} = \frac{\lambda}{A} \frac{\partial u}{\partial x} + \lambda \frac{\partial v}{\partial y} - \varphi - C, \tag{25}$$

$$\sigma_{yy} = \frac{\partial v}{\partial y} + \frac{\lambda}{A} \frac{\partial u}{\partial x} - \varphi - C, \tag{26}$$

$$\sigma_{xy} = \frac{\mu}{A} (\frac{\partial u}{\partial y} + \frac{\partial v}{\partial x}). \tag{27}$$

Finally, the potential function is

$$P = -\nabla^2 q + a_{13} C - a_{14} T. \tag{28}$$

Where

$$a_1 = \frac{aA}{\beta_1 \gamma}, a_2 = \frac{A}{d \beta_1^2 \eta}, a_3 = \frac{b_1 A}{\beta_1^2}, a_4 = \frac{K^*}{\rho C_E c_1^2},$$

$$a_5 = \frac{\gamma^2 T_o}{\eta AK}, a_6 = \frac{a \gamma T_o}{\eta \beta_1 K}, a_7 = 1 + \frac{\mu_o^2 \epsilon_o H_o^2}{\rho}, a_8 = \frac{1}{\eta c_1},$$

$$a_9 = \frac{B}{\rho c_1^3 \eta}, a_{10} = \frac{\mu}{\rho c_1^3 \eta}, a_{11} = \frac{\mu_o H_o^3}{\rho c_1^2}, a_{12} = a_8 + a_{11},$$

$$a_{13} = \frac{b_1 A}{\beta_1^2}, \text{ and } a_{14} = \frac{aA}{\gamma \beta_1}. \tag{29}$$

### 5 A New model of solution

Here, the solution of the problem is representing as the sum of two functions, the first in position and the second in time. Then, the physical variables are defined as,

$$\begin{aligned} q(x, y, t) &= q_1(x, y) + f(t), \\ \varphi(x, y, t) &= \varphi_1(x, y) + f(t), \\ \psi(x, y, t) &= \psi_1(x, y) + f(t), \\ C(x, y, t) &= C_1(x, y) + f(t), \end{aligned} \tag{30}$$

;  $t \in [0, T], T < 1.$

Where, the amplitudes of the functions  $q, \varphi, \psi, C$  are

$q_1, \varphi_1, \psi_1, C_1$ , respectively, and  $f(t)$  is function in time

that satisfies the following conditions

$$f(0) = T_o, f(\infty) = 0. \tag{31}$$

Using Eq.(30) on Eqs. (21) - (24) become respectively

$$\nabla^4 q_1 + a_1(1 - b \nabla^2) \nabla^2 \varphi_1 - a_3 \nabla^2 C_1 + a_2 (\dot{f} + \tau \ddot{f}) = 0, \tag{32}$$

$$a_4 \nabla^2 \varphi_1 = (1 + \tau_q \frac{\partial}{\partial t} + \frac{1}{2} \tau_q^2 \frac{\partial^2}{\partial t^2}) (\ddot{f} + a_6 \dot{f}), \tag{33}$$

$$a_7 \ddot{f} = a_{12} \nabla^2 q_1 - \varphi_1 + b \nabla^2 \varphi_1 - C_1 - 2f, \tag{34}$$

$$a_7 \ddot{f} = a_{10} \nabla^2 \psi_1. \tag{35}$$

### 6 A suitable time function

In this section, we are discussing the different forms of time functions, and then choosing a suitable function that satisfies the conditions.

The first formula of time can be obtained from (32), and under condition (31), we have

$$f = T_o e^{\frac{t}{\tau}}. \tag{36}$$

This formula fails at  $t \rightarrow \infty$ , where it gives  $f(\infty) = \infty$

II - The second formula of time is obtaining from (33), under (31),

$$f(t) = T_o e^{\frac{-t}{\tau q}} \cos\left(\frac{t}{\tau q}\right). \tag{37}$$

III- The third formula, after using (34) and (31) takes the form

$$f(t) = T_o \cos\left(\sqrt{\frac{2}{a_7}} t\right) \tag{38}$$

This function is finite as  $t \rightarrow \infty$ .

IV- The fourth formula, from (35) and (31) is

$$f = T_o, \tag{39}$$

This formula gives constant values of heat function  $f(t)$  for all times.

From Eqs. (36-39), we will consider the second formula of time, as it is general form of the other forms.

Here, the general form of time function depends on the value of the primary temperature and the type of constants of the properties of the material. For this purpose, we choose the cooper material for numerical computations.

Now, we are seeking to get the solution of the coordinate functions.

### 7 The functions of position

After finding analytically the time function, we are going to discuss the functions of position.

From Eqs. (32)- (35), we get the following

$$\nabla^4 q_1 - a_3 \nabla^2 C_1 = 0, \tag{40}$$

$$\nabla^2 \varphi_1 = 0, \tag{41}$$

$$a_{12} \nabla^2 q_1 - \varphi_1 - C_1 = 0, \tag{42}$$

$$\nabla^2 \psi_1 = 0. \tag{43}$$

Taking in mind that all functions are considered equal zero at  $(x, y) = (0, 0)$ , and

$$\frac{\partial \varphi^*}{\partial y} = 0, \sigma^*_{xx} = f_1, \frac{\partial C^*}{\partial y} = f_2, \sigma^*_{xy} = 0 \tag{44}$$

$$at (x, y) = (0, 0), \varphi^* = 0 \quad at (x, y) = (0, L).$$

Where  $f_1$ , and  $f_2$  is a function in  $y$ .

Using the basic information of partial differential equation of separating the variables, we have the following results.

The temperature function is

$$\varphi(x, y; t) = \sum_{n=0}^{\infty} B_n \sin(s_n y) e^{-s_n x} + T_o e^{\frac{-t}{\tau q}} \cos\left(\frac{t}{\tau q}\right). \tag{45}$$

And, the displacement functions are

$$u(x, y; t) = \sum_{n=0}^{\infty} \left[ \left( \frac{B_n + F_n}{2a_{12}} y - D_n s_n \right) \cos(s_n y) - s_n I_n \sin(s_n y) \right] e^{-s_n x} + T_o e^{\frac{-t}{\tau q}} \cos\left(\frac{t}{\tau q}\right), \tag{46}$$

And,

$$v(x, y; t) = \sum_{n=0}^{\infty} \left[ \left( \frac{B_n + F_n}{2a_{12}} y - D_n s_n \right) \sin(s_n y) + \left( I_n s_n - \frac{B_n + F_n}{2s_n a_{12}} \right) \cos(s_n y) \right] e^{-s_n x} + T_o e^{\frac{-t}{\tau q}} \cos\left(\frac{t}{\tau q}\right). \tag{47}$$

After using the famous relations between the displacement functions and the stress components, one can obtain

$$\sigma_{xx}(x, y; t) = \sum_{n=0}^{\infty} \left\{ \left( \frac{2s_n^2 I_n \mu}{A_\mu} + \frac{(B + F)\lambda}{a_{12} A_\mu} - B_n - F_n \right) (1 - a_2 + a_1) \sin(s_n y) - \frac{2\mu}{A_\mu} \left[ s_n y \left( \frac{B_n + F_n}{2a_{12}} \right) - D_n s_n^2 \right] \cos(s_n y) \right\} e^{-s_n x} + T_o e^{\frac{-t}{\tau q}} \cos\left(\frac{t}{\tau q}\right), \tag{48}$$

$$\sigma_{yy}(x, y; t) = \sum_{n=0}^{\infty} \left\{ \left( \frac{-2\mu s_n^2 I_n}{A_\mu} + \frac{B + F}{a_{12}} - B_n - F_n \right) \sin(s_n y) - \frac{2\mu s}{A_\mu} \left[ \left( \frac{B_n + F_n}{2a_{12}} \right) y - D_n s_n \right] \cos(s_n y) \right\} e^{-s_n x} + T_o e^{\frac{-t}{\tau q}} \cos\left(\frac{t}{\tau q}\right), \tag{49}$$

And,

$$\sigma_{xy}(x, y; t) = \sum_{n=0}^{\infty} \frac{\mu}{A_{\mu}} \left[ \left( \frac{B_n + F_n}{a_{12}} - 2s_n^2 I_n \right) \cos(s_n y) - s_n \left( \frac{B_n + F_n}{a_{12}} y - 2Ds \right) \sin(s_n y) \right] e^{-s_n x} + T_o e^{\frac{-t}{\tau_q}} \cos\left(\frac{t}{\tau_q}\right). \tag{50}$$

Finally, the potential function is

$$P(x, y; t) = \sum_{n=1}^{\infty} \left[ a_{13} F_n - a_{14} B_n - \frac{B_n + F_n}{a_{12}} \right] \sin(s_n y) e^{-s_n x} + T_o e^{\frac{-t}{\tau_q}} \cos\left(\frac{t}{\tau_q}\right). \tag{51}$$

Where

$$s_n = \frac{n\pi}{L}, \quad D_n = \frac{f_1 A_{\mu}}{2\mu s_n^2}, \quad B_n = \frac{f_3}{s_n}, \quad F_n = \frac{f_2}{s_n},$$

$$I_n = \frac{B_n + F_n}{2s_n^2 a_{12}}, \quad n = 0, 1, 2, 3, \dots$$

### 8 Special case

If we consider  $C = a = b_1 = \beta_1 = 0$ , we have the case of absence of diffusion, which means neglecting the effect of diffusion.

Then, the temperature function is

$$\varphi(x, y; t) = \sum_{n=0}^{\infty} B_{1n} \sin(h_n y) e^{-h_n x} + T_o e^{\frac{-t}{\tau_q}} \cos\left(\frac{t}{\tau_q}\right). \tag{52}$$

The displacement functions are

$$u(x, y; t) = \sum_{n=0}^{\infty} \left[ \left( \frac{y B_{1n}}{2a_{12}} - D_{1n} h_n \right) \cos(h_n y) - h_n I_{1n} \sin(h_n y) \right] e^{-h_n x} + T_o e^{\frac{-t}{\tau_q}} \cos\left(\frac{t}{\tau_q}\right), \tag{53}$$

And,

$$v(x, y; t) = \sum_{n=0}^{\infty} \left[ \left( \frac{y B_{1n}}{2a_{12}} - D_{1n} h_n \right) \sin(h_n y) + \left( I_{1n} h_n - \frac{B_{1n}}{2h_n a_{12}} \right) \cos(h_n y) \right] e^{-h_n x} + T_o e^{\frac{-t}{\tau_q}} \cos\left(\frac{t}{\tau_q}\right). \tag{54}$$

The stress functions are

$$\sigma_{xx}(x, y; t) = \sum_{n=0}^{\infty} \left[ 2\mu D_{1n} h_n^2 - \frac{\mu y B_{1n} h_n}{2a_{12} A_{\mu}} \right] \cos(h_n y) + \left[ \frac{2\mu h_n^2 I_{1n}}{A_{\mu}} + \frac{B_{1n} \lambda}{a_{12} A_{\mu}} - B_{1n} \right] \sin(h_n y) e^{-h_n x} + T_o e^{\frac{-t}{\tau_q}} \cos\left(\frac{t}{\tau_q}\right), \tag{55}$$

$$\sigma_{yy}(x, y; t) = \sum_{n=0}^{\infty} \left\{ \frac{2\mu h_n}{A_{\mu}} \left[ \frac{y B_{1n}}{2a_{12}} - D_{1n} h_n \right] \cos(h_n y) + \left[ \frac{B_{1n}}{a_{12}} - \frac{2\mu h_n^2 I_{1n}}{A_{\mu}} - B_{1n} \right] \sin(h_n y) \right\} e^{-h_n x} + T_o e^{\frac{-t}{\tau_q}} \cos\left(\frac{t}{\tau_q}\right), \tag{56}$$

And,

$$\sigma_{xy}(x, y; t) = \sum_{n=0}^{\infty} \left\{ \frac{2\mu}{A_{\mu}} \left[ \left( \frac{B_{1n}}{2a_{12}} - I_{1n} h_n^2 \right) \cos(h_n y) - h \left( \frac{y B_{1n}}{2a_{12}} + h_n D_{1n} \right) \sin(h_n y) \right] \right\} e^{-h_n x} + T_o e^{\frac{-t}{\tau_q}} \cos\left(\frac{t}{\tau_q}\right). \tag{57}$$

Where,

$$h_n = \frac{n\pi}{L}, \quad B_{1n} = \frac{f_3}{h_n}, \quad D_{1n} = \frac{f_1}{2\mu h_n^2}, \quad I_{1n} = \frac{B_{1n}}{2h_n^2 a_{12}}, \quad n = 0, 1, 2, \dots$$

### 9 Numerical results

To explain the problem graphically, we will use copper material as an example for the thermoelastic material, which have the following values of physical constants.

$$\begin{aligned} T_o &= 293 \text{ K}, \quad \lambda = 7.76 \times 10^{10} \text{ kg} / (\text{m.s}^2) \\ \alpha_t &= 1.78 \times 10^{-5} \text{ K}^{-1}, \quad C_E = 383.1 \text{ J} / (\text{kg.K}) \\ \mu &= 3.86 \times 10^{10} \text{ kg} / (\text{m.s}^2), \quad \rho = 8954 \text{ kg} / \text{m}^3 \\ \alpha_c &= 1.98 \times 10^{-4} \text{ m}^3 / \text{kg}, \quad K = 300 \text{ W} \\ a &= 1.2 \times 10^4 \text{ m}^2 / (\text{s}^2.\text{K}), \quad y = 0.6, \quad \tau = 0.01, \\ b_1 &= 0.9 \times 10^6 \text{ m}^5 / (\text{kg.s}^2), \quad d = 0.85 \times 10^{-8} \text{ (kg.s)} / \text{m}^3 \\ K^* &= 2.97 \times 10^{13}, \quad f_1 = 0.1, \quad f_2 = 0.2, \quad f_3 = 0.5, \quad \tau_q = 0.08, \\ \varepsilon_0 &= 36\pi \times 10^{-9}, \quad H_o = 1000, \quad \mu_o = 4\pi \times 10^{-7}. \end{aligned}$$

The numerical calculations were used to show the behavior of  $u$ ,  $\sigma_{xx}$ ,  $\sigma_{xy}$ ,  $\varphi$ , and  $C$  on the vertical axis with  $x$  at  $y = 0.5$ , in presence and absence of magnetic field.

Fig. 1 depicts the distribution of displacement components

$u$  against  $x$  in the presence and absence of a magnetic field. The displacement function has a greater value in the presence of a magnetic field than in the absence of one. The two curves begin with negative values and gradually climb until they attain stability. The stress distribution function  $\sigma_{xx}$  against  $x$  in the presence of a magnetic field is depicted in Fig. 2. The two curves begin with a positive value and gradually decrease until they reach a point of stability at zero. The fluctuation of the stress function  $\sigma_{xy}$  against  $x$  in the presence and absence of a magnetic field is depicted in Fig. 3. The two curves begin with a negative value and gradually increase until they attain stability. The distribution of the temperature function  $\varphi$  and the concentration function  $C$  in presence and absence of magnetic field are shown in Figs. 4 and 5. In the two figures, the two cases are implacable on their others. The curves start from positive value decreasing till reaching zero. Fig. 6 shows the distribution of the potential function  $P$  against  $x$ . The curves start from negative value and then began to increase until they decay to zero.

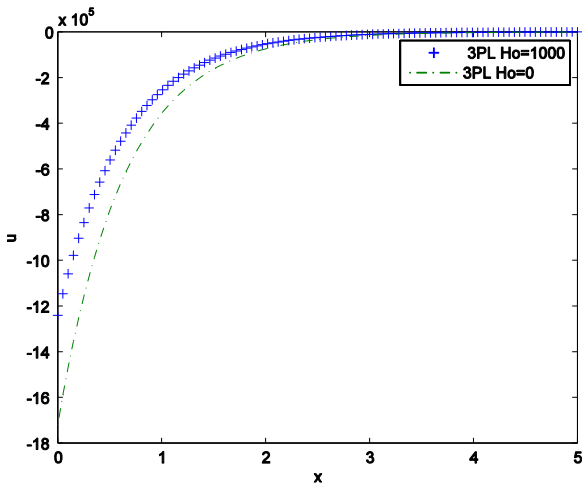


Fig. 1 The displacement distribution  $u$  in presence and absence of magnetic field.

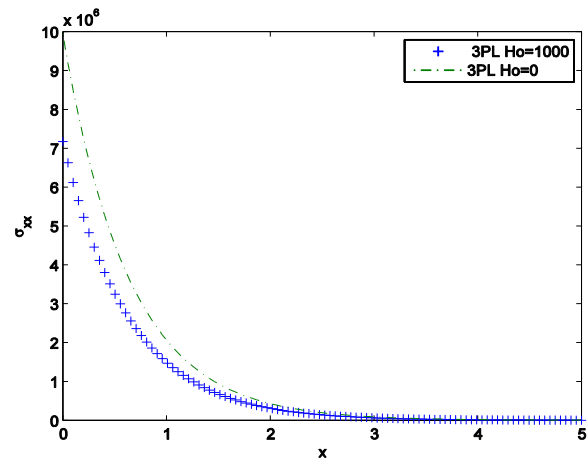


Fig. 2 The stress distribution  $\sigma_{xx}$  in presence and absence of magnetic field.

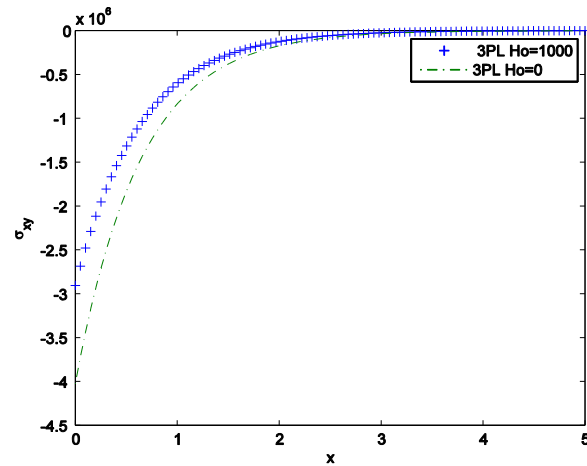


Fig. 3 The stress distribution  $\sigma_{xy}$  in presence and absence of magnetic field.

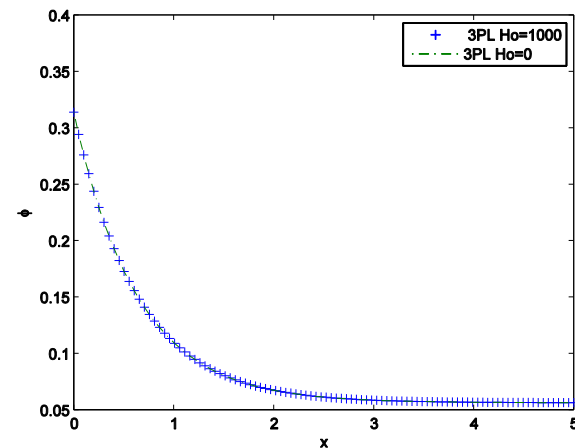


Fig. 4 The temperature distribution  $\varphi$  in presence and absence of magnetic field.

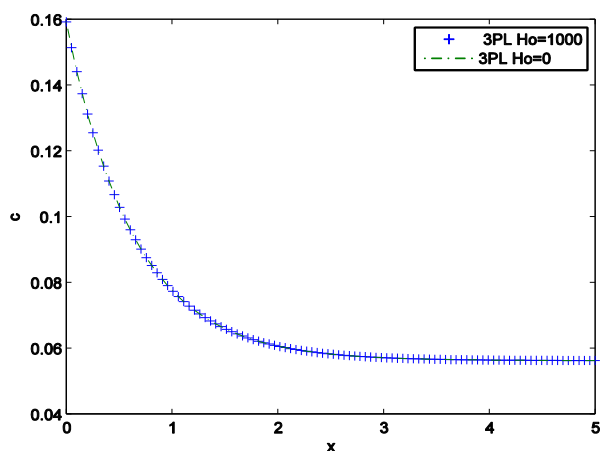


Fig. 5 The concentration distribution  $C$  in presence and absence of magnetic field.

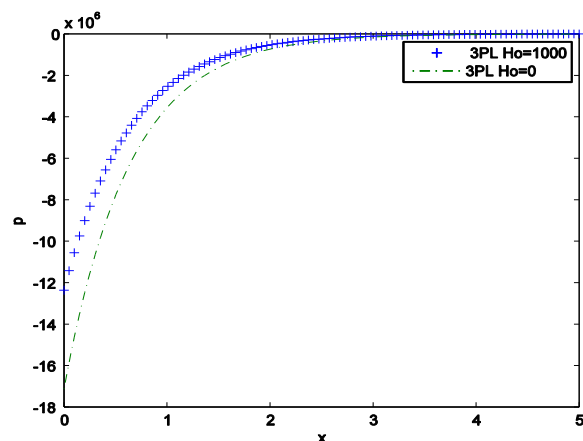


Fig. 6 The potential distribution  $P$  in presence and absence of magnetic field.

## 10 Conclusion and discussion

From previous work, we can deduce the following

1. Isotropic, homogenous, thermoelastic body discussed under the effect of diffusion, magnetic field and two- temperature.
2. Separation of variables is used to get the physical quantities.
3. The displacement was separated from the time, to explain the physical meanings of the problem.
4. Cooper is used to get the numerical values of the quantities we get.
5. The behavior of temperature function were discussed at certain values using programming.

6. The behavior of temperature and diffusion weren't affected by the influence of magnetic field.
7. The physical quantities tends to infinity when the  $H_o > 10^3$ , which means that it vanish.
8. Results discussed numerically and graphically using Matlab program in presence and absence of magnetic field.

**Conflict of interest:** The author declares that there is no conflict regarding the publication of this paper.

## References

- [1] M. A. Abdou, M. I. A. Othman, R. S. Tantawi, N. T. Mansour, Effect of Rotation and Gravity on Generalized Thermoelastic Medium with Double Porosity under L-S Theory, *Journal of Materials Science and Nanotechnology*, 6:1-14(2018).
- [2] M. A. Abdou, M. I. A. Othman, R. S. Tantawi, N. T. Mansour, Exact solutions of generalized thermoelastic medium with double porosity under L-S theory, *Indian Journal of Physics*, <https://doi.org/10.1007/s12648-019-01505-8>(2019).
- [3] M. A. Abdou, M. I. A. Othman, R. S. Tantawi, N. T. Mansour, Effect of magnetic field on generalized thermoelastic medium with double porosity structure under L-S theory, *Indian Journal of Physics*, <https://doi.org/10.1007/s12648-019-01648-8>(2019).
- [4] W. Nowacki, Dynamical problems of thermoelastic diffusion in solids, I *Bulletin of the Polish Academy of Sciences: Technical*, 22:55-64(1974).
- [5] W. Nowacki, Dynamical problems of thermoelastic diffusion in solids II, *Bulletin of the Polish Academy of Sciences: Technical*, 22: 129-135 (1974).
- [6] W. Nowacki, Dynamical problems of thermoelastic diffusion in solids III, *Bulletin of the Polish Academy of Sciences: Technical*, 22: 257-266 (1974).
- [7] W. Nowacki, Dynamical problems of thermoelastic diffusion in elastic solids, *Bulletin of the Polish Academy of Sciences: Technical*, 15: 105-128 (1974).
- [8] H. H. Sherief, and H. A. Salah, A half space problem in the theory of generalized thermoelastic diffusion, *International Journal of Solids Structure*, 42: 4484-4493(2005).
- [9] H. H. Sherief, N. M. El-Maghraby, "A thick plate problem



- in the theory of generalized thermoelastic diffusion," *International Journal of Thermophysics*, 30: 2044-2057(2009).
- [10] P. J. Chen, M. E Gurtin, , Z. Anzew, *Journal of Mathematical Physics*, 19: 614-622(1968).
- [11] P. J. Chen, M. E Gurtin, W.O. Williams, A note on non-simple heat conduction, *Zeitschrift für angewandte Mathematik und Physik*, 19: 969-985(1968).
- [12] P. J. Chen, M. E Gurtin, W.O. Williams, *Zeitschrift für angewandte Mathematik und Physik*, 20: 107-121(1969).
- [13] S. Y. Atwa. Generalized magneto-thermoelasticity with two temperature and initial stress under Green-Naghdi theory, *Applied Mathematical Modeling*, 38:5217–30(2014).
- [14] M. A. Ezzat, A. S. El-Karamany, A. A. El-Bary, Magneto-thermoelasticity with two fractional order heat transfer. *Journal of Associative Arab Universities for basic and applied science*, 19: 70–79 (2016).
- [15] A. M. Abd-Alla, S. M. Abo-Dahab, F. S. Bayones. Propagation of Rayleigh waves in magneto-thermo-elastic half-space of a homogeneous orthotropic material under the effect of rotation, initial stress and gravity field., *Journal of Vibration Control*, 19: 1395–420(2013).
- [16] A. Baksi, B. K. Roy, R. K. Bera, Eigenvalue approach to study the effect of rotation and relaxation time in generalized magneto-thermo-viscoelastic medium in one dimension, *Mathematics and Computational Modelling*, 44:1069–79(2003).
- [17] S. K. Roychoudhuri, "On thermoelastic three phase lag model", *Journal of Thermal Stresses*, 30: 231-238(2007).
- [18] R. Quintanilla and R. Racke, "A note on stability in three-phase-lag heat conduction", *International Journal of Heat and Mass transfer*, 51:24-29(2008).
- [19] M. I. A. Othman, S. M. Said, "2-D problem of magneto-thermoelasticity fiber-reinforced medium under temperature dependent properties with three-phase-lag model", *Meccanica*, 49: 1225-1241(2014).
- [20] M. I. A. Othman, W. M. Hasona, Nehal T. Mansour, Effect of Rotation and Initial Stress on Generalized Thermoelastic Medium with Two-Temperature under Three-Phase-Lag Model. *International Journal of Innovative Research in Science, Engineering and Technology*, 4-2327: 2337(2015).
- [21] M. I. A. Othman, Y. Q. Song, Effect of rotation on plane waves of the generalized electro magneto-thermo-viscoelasticity with two relaxation times, *Applied Mathematical Modeling*, 32:811-825(2008).
- [22] M. I. A. Othman, S. M. Said, " The effect of rotation on two- dimensional problem of a fiber- reinforced thermoelastic with one relaxation time, *International Journal of Thermophysics*, 33:160-171(2012).
- [23] R. S. Dhaliwal, H. H. Sherif, A reciprocity theorem and integral representations for generalized thermoelasticity, *Journal of Mathematics and Physics Science*, 15:537-549.
- [24] R. Kumar, V. Gupta, Uniqueness, reciprocity theories and plane wave propagation in different theories of thermoelasticity, *International Journal of Applied Mechanics and Engineering*, 18: 1067-1086(2013).