



## Crop Production Modeling System for Diverse Physiographical Areas in Nueva Vizcaya

By Rodemelia B. Bangat, Fidel G. Patricio Jr & Joan Hazel V. Tiongson

*Nueva Vizcaya State University*

**Abstract-** The wide range of environmental factors affecting cropping is very difficult to ascertain most especially with the absence of climate monitoring equipment and dissemination of an up-to-date weather data forecasting. Due to climate change, irregular weather patterns cause major disruptions in agricultural activities and heavy damage to crop yields. There is limited data available to anticipate and adapt to climatic changes due to insufficiency of monitoring systems.

The proposed system entitled "Crop Production Modeling System" then integrates the use of available state-of-the-art climate sensing and monitoring system to gather and interpret data and establish current pattern of weather. Portable and unique Field Monitoring Systems (FMS) installed in strategic locations of the different municipalities of Nueva Vizcaya will be utilized to effectively monitor variations in the weather patterns. These weather patterns will be used as a tool to determine the optimal cropping season. In addition, the system provides different graphical presentations as reports readable and understandable to the users especially to the agricultural sectors. Moreover, the said system will be accessible and portable to the users in all cases because of its internet dependability.

**Keywords:** *crop modeling system, field modeling system, portable, weather pattern, nueva vizcaya.*

**GJCST-G Classification:** *C.0*



*Strictly as per the compliance and regulations of:*



# Crop Production Modeling System for Diverse Physiographical Areas in Nueva Vizcaya

Rodemelia B. Bangat <sup>α</sup>, Fidel G. Patricio Jr <sup>σ</sup> & Joan Hazel V. Tiongson <sup>ρ</sup>

**Abstract-** The wide range of environmental factors affecting cropping is very difficult to ascertain most especially with the absence of climate monitoring equipment and dissemination of an up-to-date weather data forecasting. Due to climate change, irregular weather patterns cause major disruptions in agricultural activities and heavy damage to crop yields. There is limited data available to anticipate and adapt to climatic changes due to insufficiency of monitoring systems.

The proposed system entitled "Crop Production Modeling System" then integrates the use of available state-of-the-art climate sensing and monitoring system to gather and interpret data and establish current pattern of weather. Portable and unique Field Monitoring Systems (FMS) installed in strategic locations of the different municipalities of Nueva Vizcaya will be utilized to effectively monitor variations in the weather patterns. These weather patterns will be used as a tool to determine the optimal cropping season. In addition, the system provides different graphical presentations as reports readable and understandable to the users especially to the agricultural sectors. Moreover, the said system will be accessible and portable to the users in all cases because of its internet dependability.

The present system can be customized to address not only agriculture concerns but also health and safety, and disaster and risk management. The system has the potential for up scaling and adoption by other provinces or municipalities due to its very promising capabilities.

**CCS Concepts:** • Hardware → Communication hardware, interfaces and storage → Sensor applications and deployments •

CCS → Information systems → Information retrieval → Evaluation of retrieval results → Presentation of retrieval results

**Keywords:** crop modeling system, field modeling system, portable, weather pattern, nueva vizcaya.

## I. INTRODUCTION

Computer is one of the powerful electronic devices, which have abridged the world by bringing its practicality and usefulness to people of all ages regardless of the status of living. It performs a wide range of functions that it became part of one's life whether in business, education, medical field, and the like. Recently, innovations have been accelerating the convergence between these industries including

agriculture. With these emerging technologies, farmers can use them to increase their productivity or improve their farming strategies that could lead to increase their crop yields.

According to study of (Sun Chin, et.al, 2009), environmental factors such as temperature, humidity, solar radiation, CO<sub>2</sub>, and soil moisture are essential elements which influence on growth rate, productivity of crops produce in agricultural field. If we manage these environmental factors efficiently, we can increase the production of agricultural products. One significant invention that greatly helped the agricultural industry that will monitor these environmental factors is the use of a field monitoring system. The system collects environmental data directly obtained from environment sensors, soil sensor and CCTV camera. To implement a stand-alone system, the researchers will apply a solar cell panel to operate this system without power source. A Global Positioning System (GPS) module will be installed on the system to indicate the location of this system. So, the FMS will monitor the field conditions by using various facilities and correctly operates without helping external supports.

In the early 1980s, researchers began to apply knowledge-based approaches to problems in agriculture and Natural Resources Management. In recent years, interest has intensified in the integration of knowledge-based approaches with conventional computer methodologies to increase the power, utility, and user friendliness of these systems. However, implementing the technology in a dispersed and computer-poor industry is difficult.

Nueva Vizcaya is located in the northcentral part of Luzon in Region 2. It is surrounded by notable mountain ranges such as the Sierra Madre on the east, Caraballo on the south, and Cordillera on the west. The province has several principal rivers: Magat, Matuno, Marang, Sta. Fe, and Sta. Cruz. All these rivers are tributaries of the Magat River which flows into the Cagayan River. The province is bounded on the north and northeast by the province of Ifugao and Isabela, on the east and southeast by Quirino and Aurora, on the south by Nueva Ecija, and on the west by Benguet and Pangasinan.

Nueva Vizcaya is relatively dry from November to April and relatively wet during the rest of the year. Maximum temperature ranges from 22-25 degrees

Author <sup>α</sup>: Kalinga State University

Author <sup>σ</sup> <sup>ρ</sup>: Nueva Vizcaya State University.

e-mail: jtiongson@nvsu.edu.ph

Celsius. December and January are the coldest months when temperature falls to about 20 degrees Celsius while the warmest months are April and May. Nueva Vizcaya is often referred to as lowland Baguio because of its pleasant climate.

Among the crops produced in the province of Nueva Vizcaya, rice and corn are the primary crops that contribute more than half of the total food grain production in the province. Thus, the study on the various impacts of climate changes on these crop yields is urgently required for planning the future food supply in the province.

In this research project, the researchers intend to develop a crop production modeling system that will analyze and interpret the data collected from the field monitoring system that will serve as guide for the farmers to design and improve their farming strategies in order to produce more crops yield.

## II. METHODOLOGY

### a) Research Design

There are already existing FMS installed and maintained by NVSU in the selected municipalities of Nueva Vizcaya. Mainly, the FMS consists of (1) field router, which collects data from the data logger and sends to the server through an Internet connection; (2) data logger, which stores primary data; and (3) weather elements sensors that take measurements of different weather elements at a pre-programmed interval. These sensors include thermometer, rain gauge, solar radiation sensor, soil sensor, wind vane and anemometer.

### b) Instrumentation

The fundamental principle of a monitoring system is to capture data, process it and disseminate results in a systematic way. These monitoring systems enable us to measure trends of various indicators based on the data collected in the field. With our proposed system, different FMSs that were installed will be utilized to gather data as a basis in determining the optimal cropping season of a particular crop in a specific location. These FMS data contain temperature, humidity, soil moisture, wind direction and rain readings.

### c) Data Gathering Procedures

The response of crops to climatic changes is the takeoff point in designing adaptation strategies for crops on climate change that is why it is an imperative and is useful to design adaptation strategies in agriculture like adjustment of cropping calendar, timing of cultural and management activities, and attempts to minimize agricultural damage due to natural calamities. Data monitoring and establishment of climatic patterns in the different micro-climatic zones (MCZs) are essential for localized weather forecasting and development of early warning system for agricultural production. Thus, the modification of existing cropping

and farming systems shall be the key to adaptation strategies that will be adopted in the different land utilization types (LUTs).

Cagayan Valley, particularly the province of Nueva Vizcaya has heterogeneous elevation because it is bounded by different mountain systems. This indicates great variability in weather between just small adjacent areas. Using elevation as reference, the province will be mapped and delineated into conceptual MCZs. These MCZs are assumed to have differing weather patterns due to differences in their elevation.

Different FMSs were installed in each of the MCZs. The FMS will then monitor the different weather elements i.e. atmospheric temperature, rainfall, relative humidity, solar radiation, among others. Most importantly, soil data such as soil pH, organic matter, and other chemical properties will be regularly monitored since it is the main element in crop production. The FMS is composed of sensors that collect climate data from the different weather elements and stores it into the data logger. The field router (FR) collects photographs of the current environmental condition and collects the data from the data logger and transmit it to the database server through the use of internet. It is self-sustaining and requires a very minimal user intervention. With these weather elements, software will be developed to interpret and analyze data from the FMS to support decision-making of farmers in their agricultural activities, and for other users such as planners and policy makers in the formulation of adaptation strategies in the local level.

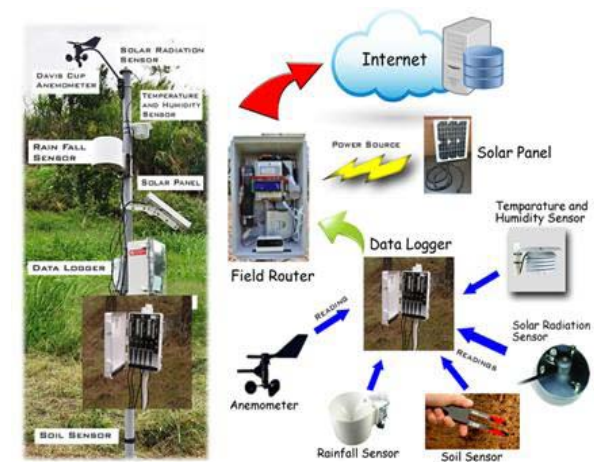


Fig. 1: The data collection schema of FMS

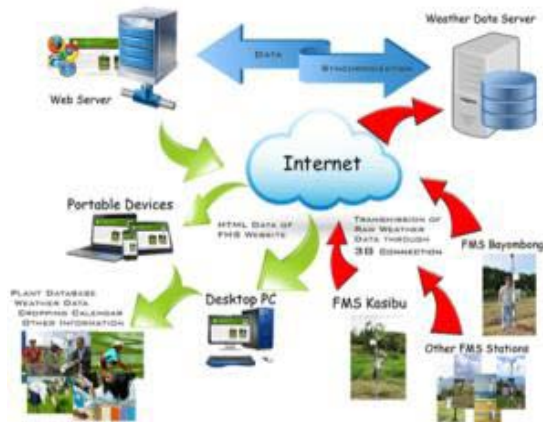


Fig. 2: The data transmission schema of FMS

The CPMS is dependent on the data coming from the different FMS devices installed in the selected municipalities of Nueva Vizcaya. Data is generated from the weather sensors of the said FMS device. These weather sensor elements include: thermometer, rain gauge, solar radiation sensor, soil sensor, wind vane and anemometer. The following figures then are sample data coming from the FMS device.

EM29256	Port 1	Port 1	Port 2	Port 3	Port 4	Port 4	Port 4	Port 5	Port 5	Port 5
17160 records	VP-3 Hur	VP-3 Hur	ECRN-10	PYR	Sol	Davis Cu	Davis Cu	STE Moir	STE Moir	STE Moir
Measurement Time	RH	°C Temp	mm Prec	Solar	W/m <sup>2</sup>	Wind's Gust	° Directic	m/m <sup>2</sup>	VA	°C Temp
29 Jun 2015 2:00 PM	0	0	0.0	0.0	0.0	0.0	0	0	0	0
30 Jun 2015 11:00 AM	0	0	0.0	0.0	0.0	0.0	0	0	0	0
30 Jun 2015 12:00 PM	3.426	104.0	0.4	895.7	0.9	1.5	40	0.046	36.8	0.00
30 Jun 2015 1:00 PM	2.056	104.0	0.0	983.3	0.9	1.4	7	0.076	30.8	0.00
30 Jun 2015 2:00 PM	0.343	104.0	0.0	913.7	0.8	1.8	41	0.076	30.4	0.00
30 Jun 2015 3:00 PM	2.056	104.0	0.0	767.2	1.0	1.9	45	0.075	30.3	0.00
30 Jun 2015 4:00 PM	1.370	104.0	0.0	575.0	0.8	1.8	29	0.075	30.2	0.00
30 Jun 2015 5:00 PM	2.741	104.0	0.0	355.2	0.6	1.2	19	0.075	30.3	0.00
30 Jun 2015 6:00 PM	0.343	104.0	0.0	78.7	0.5	2.2	123	0.076	30.4	0.00
30 Jun 2015 7:00 PM	2.741	104.0	0.0	3.7	0.6	2.2	123	0.076	30.5	0.00
30 Jun 2015 8:00 PM	0.343	104.0	0.0	0.0	0.2	0.9	195	0.076	30.7	0.00
30 Jun 2015 9:00 PM	0.343	104.0	0.0	0.0	0.2	0.6	195	0.076	30.8	0.00
30 Jun 2015 10:00 PM	0.343	104.0	0.0	0.0	0.1	0.5	218	0.076	30.9	0.00
30 Jun 2015 11:00 PM	0.343	104.0	0.0	0.0	0.1	0.5	221	0.076	30.9	0.00
1 Jul 2015 12:00 AM	0.343	104.0	0.0	0.0	0.1	0.6	245	0.076	31.0	0.00
1 Jul 2015 1:00 AM	0.343	104.0	0.0	0.0	0.1	0.4	272	0.076	31.0	0.00
1 Jul 2015 2:00 AM	0.343	104.0	0.0	0.0	0.0	0.4	261	0.076	31.0	0.00
1 Jul 2015 3:00 AM	0.343	104.0	0.0	0.0	0.1	0.5	255	0.076	30.9	0.00
1 Jul 2015 4:00 AM	0.343	104.0	0.0	0.0	0.0	0.3	255	0.076	30.9	0.00
1 Jul 2015 5:00 AM	0.343	104.0	0.0	0.0	0.1	0.4	255	0.076	30.9	0.00
1 Jul 2015 6:00 AM	1.713	104.0	0.0	5.5	0.1	0.5	255	0.076	30.8	0.00
1 Jul 2015 7:00 AM	0.343	104.0	0.0	159.3	0.0	0.4	271	0.076	30.8	0.00
1 Jul 2015 8:00 AM	0.343	104.0	0.0	408.3	0.2	0.8	71	0.076	30.7	0.00
1 Jul 2015 9:00 AM	1.028	104.0	0.0	635.4	0.6	1.8	26	0.076	30.6	0.00

Fig. 3: Sample XLS data from the FMS device

This data was created from the FMS device situated at Diadi, Nueva Vizcaya. The recorded data was generated starting June 2015 at an hourly basis as presented in the first column of the table. The succeeding columns are utilized for the ten (10) sensors in an FMS device. Table now shows the different results established by each sensor. It can be noted in the given table that zero (Ø) values are also recorded. This would mean that a particular sensor loses its signal during data transmission. Another reason would be the physical device is non-functional at all. A picture interpretation of the data collected in each sensor is then provided below for better understanding of the patterns provided by the sensors.

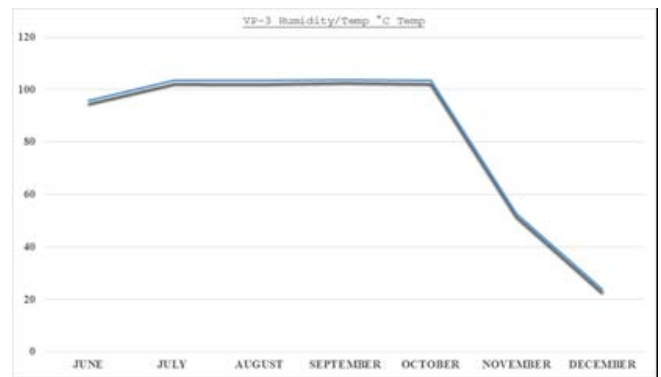


Fig. 4: Sample graph for humidity

The provided graph shows that humidity in the months of June to October is at 100% then slowly going down by the end of October until December. This would mean a cold or rainy season for the months of October to December, which is not suitable for planting palay.

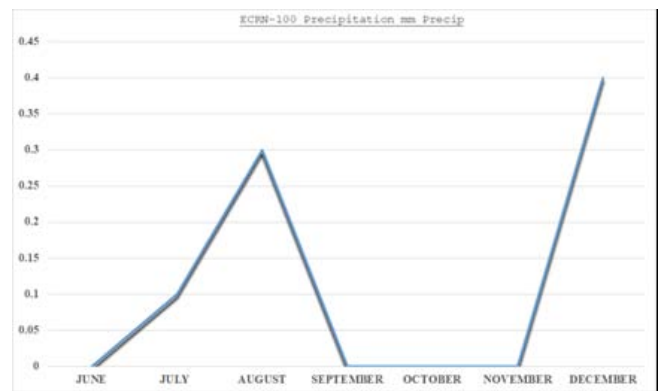


Fig. 5: Sample graph for rain gauge

The graph in Figure 5 shows the amount of rain (water) being measured. It can be observed that by the end of June, no amount of water was recorded as that in the mid of September to mid of November.

### III. RESULTS AND DISCUSSION

Climate change refers to significant changes in global temperature, precipitation, wind patterns and other measures of climate that occur over several decades or longer. These significant changes in the environment contribute a great impact most especially in the agricultural sector. That is why climate change adaptation requires more than simply maintaining the current level of performance from the agricultural sector, but rather developing a set of responses that allow the sector to improve performance under the changing conditions climate change implies. Because agricultural production remains the main source of income for most rural communities, adaptation of the agricultural sector to the adverse effects of climate change will be imperative to protect and improve the livelihoods of every human being. Today, crop production is increasingly vulnerable to risks associated with climate

change. This is because climate change is causing variations in environmental conditions that are posing significant challenges to farmers, over and beyond those that are experienced “normally”. Even under population pressure and the dwindling productive agricultural areas, crop yields should be maintained still. This explains why the agricultural sector bears one of the heaviest burdens to adapt and mitigate climate change. However, with the availability of the state-of-the-art technology like the FMS and the Crop Production Modeling System, there is a huge potential for crop production practices to adapt to, and contribute to the mitigation of climate change. With this study, different FMSs installed in strategic locations of the province will effectively monitor variations in weather patterns that will be used as a basis in determining the optimal cropping season of a particular crop in a specific location. For easier understanding on the part of the farmers, different reports in graphical presentations and heat maps will be created by the system proposing the optimal crop to plant including the target location. As a result, the interface of the Crop Production Modeling System is provided below for easier understanding.

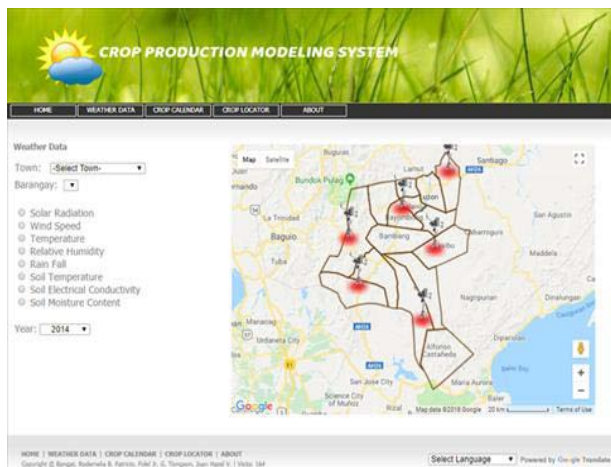


Fig. 6: CPMS Weather Data Screen

As mentioned in this study, six FMSs were installed in the selected municipalities of Nueva Vizcaya namely: Bayombong, Diadi, Dupax del Sur, Kasibu, Kayapa and Santa Fe. The said FMSs consist of (1) field router; (2) data logger; and (3) weather elements sensors that take measurements of different weather elements at a pre-programmed interval.



Fig. 7: Weather Data with Graph

This screen shows the graphical representation of the data coming from the sensors of a particular FMS device situated at a strategic location. Data gathered were in CSV or XLS format that will be interpreted/converted in a human readable format like the graph for easier understanding. This report is generated by the system that can be used as one tool in the decision-making process of the farmers.

	A	B	C	D	E	F	G	H	I	J	K
1	EM29256	Port 1	Port 1	Port 2	Port 3	Port 4	Port 4	Port 4	Port 5	Port 5	Port 5
2	17160 records	VP-3	Hur	ECRN-10	PYR	Soli	Davis	Cu	Davis	Cu	5TE
3	Measurement Time	RH	°C	Temp	mm	Prec	Solar	W/m <sup>2</sup>	W/m <sup>2</sup>	W/m <sup>2</sup>	W/m <sup>2</sup>
4	29 Jun 2015 2:00 PM	0	0	0	0	0	0	0	0	0	0
5	30 Jun 2015 11:00 AM	0	0	0	0	0	0	0	0	0	0
6	30 Jun 2015 12:00 PM	3.426	104.0	0.4	805.7	0.9	1.5	40	0.046	36.8	0.00
7	30 Jun 2015 1:00 PM	2.056	104.0	0.0	983.3	0.9	1.4	7	0.076	30.8	0.00
8	30 Jun 2015 2:00 PM	0.343	104.0	0.0	913.7	0.8	1.8	41	0.076	30.4	0.00
9	30 Jun 2015 3:00 PM	2.056	104.0	0.0	767.2	1.0	1.9	45	0.075	30.3	0.00
10	30 Jun 2015 4:00 PM	1.370	104.0	0.0	575.0	0.8	1.8	29	0.075	30.2	0.00
11	30 Jun 2015 5:00 PM	2.741	104.0	0.0	355.2	0.6	1.2	19	0.075	30.3	0.00
12	30 Jun 2015 6:00 PM	0.343	104.0	0.0	78.7	0.5	2.2	123	0.076	30.4	0.00
13	30 Jun 2015 7:00 PM	2.741	104.0	0.0	3.7	0.6	2.2	171	0.076	30.5	0.00
14	30 Jun 2015 8:00 PM	0.343	104.0	0.0	0.0	0.2	0.9	174	0.076	30.7	0.00
15	30 Jun 2015 9:00 PM	0.343	104.0	0.0	0.0	0.2	0.6	195	0.076	30.8	0.00
16	30 Jun 2015 10:00 PM	0.343	104.0	0.0	0.0	0.1	0.5	218	0.076	30.9	0.00
17	30 Jun 2015 11:00 PM	0.343	104.0	0.0	0.0	0.1	0.5	221	0.076	30.9	0.00
18	1 Jul 2015 12:00 AM	0.343	104.0	0.0	0.0	0.1	0.6	245	0.076	31.0	0.00
19	1 Jul 2015 1:00 AM	0.343	104.0	0.0	0.0	0.1	0.4	272	0.076	31.0	0.00
20	1 Jul 2015 2:00 AM	0.343	104.0	0.0	0.0	0.0	0.4	261	0.076	31.0	0.00
21	1 Jul 2015 3:00 AM	0.343	104.0	0.0	0.0	0.1	0.5	255	0.076	30.9	0.00
22	1 Jul 2015 4:00 AM	0.343	104.0	0.0	0.0	0.0	0.3	255	0.076	30.9	0.00
23	1 Jul 2015 5:00 AM	0.343	104.0	0.0	0.0	0.1	0.4	255	0.076	30.9	0.00
24	1 Jul 2015 6:00 AM	1.713	104.0	0.0	5.5	0.1	0.5	255	0.076	30.8	0.00
25	1 Jul 2015 7:00 AM	0.343	104.0	0.0	159.3	0.0	0.4	271	0.076	30.8	0.00
26	1 Jul 2015 8:00 AM	0.343	104.0	0.0	408.3	0.2	0.8	71	0.076	30.7	0.00
27	1 Jul 2015 9:00 AM	1.028	104.0	0.0	635.4	0.6	1.8	26	0.076	30.6	0.00

Fig. 8: Sample XLS data collected from the FMS device

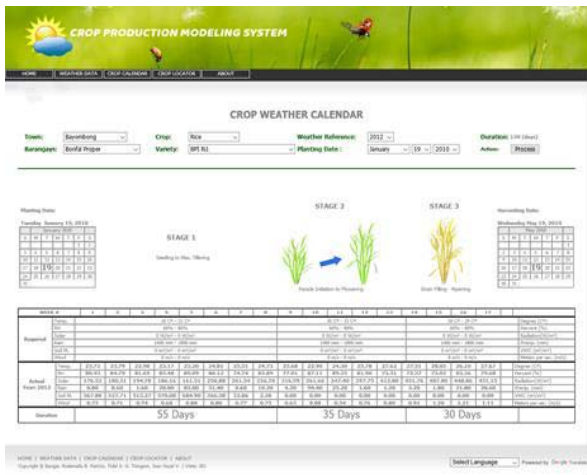


Fig. 9: Crop Weather Calendar

The above picture is also a system generated report that shows a pattern of growth of a particular crop in a particular location. This will be of great help to the farmers because specific calendar dates are provided to determine the optimal cropping season. Also, the patterns of data gathered from the FMS device are presented in this report to serve as a tool for the farmers to decide in their next cropping endeavor.

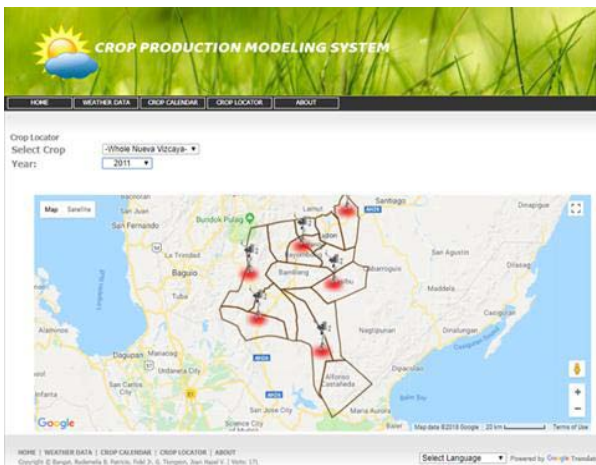


Fig. 10: Heat Map of Nueva Vizcaya

This figure presents the map of Nueva Vizcaya containing the selected municipalities where the different FMS devices are situated. This part of the system then serves as a reference for the farmer on what particular crop gave the best production in a particular year given the data coming from the FMS device. Also, with this report, farmers now can decide what crop to plant and when to plant in order to obtain the optimal harvest.

#### IV. CONCLUSIONS

In conclusion, the developed portable, mobile, and easy to maintain internet-based weather monitoring system is useful to establish weather differences in Nueva Vizcaya. This system allows small spatial scale

weather databases which could be transformed into usable data essential to create a localized climate change adaptation strategy for agriculture in Nueva Vizcaya. Also, the data parsing software (FMS parser) written allows the FMS raw data to be interpreted and translated into forms usable by intended users and beneficiaries of information.

#### ACKNOWLEDGMENTS

We give credit to Dr. Maria Visitation N. Gumabay who pushed us with this piece of work.

#### REFERENCES RÉFÉRENCES REFERENCIAS

1. Climate Smart Agriculture. (n.d.). Module 4: Crop Production Systems, <http://www.climatesmartagriculture.org/3517507d0134636334c0167d3294be8fd6855.pdf>
2. Ani Dath(2013). "Development of an Expert System for Agricultural Commodities". The International Journal of Computer Science & Applications (TIJCSA). ISSN – 2278-1080 Volume 2, No. 07.
3. Department of Tourism. (2009). Philippine Sites. <http://www.tourism.gov.ph/SitePages/InteractiveSitesPage.aspx?siteID=7>
4. Wilfredo A. Dumale and Masaru Mizoguchi. (2013). Potential applications of the field monitoring system (FMS) for local and farmer-level climate change adaptation in agriculture. In: Second International Workshop on Climatic Changes and their Effects on Agriculture in the Asian Monsoon Region. Forest Lodge, Baguio City, Philippines
5. Jeonghwan Hwang, et.al., (2010). Study on an Agricultural Environment Monitoring Server System using Wireless Sensor Networks. School of Information and Communication Engineering, Suncheon National University, Maegok-dong, Suncheon-si, Jeollanam-do, Korea.
6. Imtinungla, et.al. (2017). "Embedded System based Agricultural Field Monitoring System". International Journal of Electronics Engineering Research. ISSN 0975-6450 Volume 9, Number 7 (2017) pp. 977-984 © Research India Publications <http://www.ripublication.com>
7. National Institute of Food and Agriculture, Agriculture Technology. (2017). United States Department of Agriculture. March 13, 2018: <https://nifa.usda.gov/topic/agriculture-technology>
8. Monitoring Information System. (n.d.). [http://www.fukuoka.unhabitat.org/docs/publications/pdf/peoples\\_process/ChapterVII\\_Monitoring\\_Information\\_System.pdf](http://www.fukuoka.unhabitat.org/docs/publications/pdf/peoples_process/ChapterVII_Monitoring_Information_System.pdf)
9. Aykut Sevim. (2004). Expert Systems in Agriculture. [http://saksagan.ceng.metu.edu.tr/courses/ceng568/ann/survey\\_paper/Aykut\\_Sevim\\_Expert\\_Systems\\_in\\_Agriculture.pdf](http://saksagan.ceng.metu.edu.tr/courses/ceng568/ann/survey_paper/Aykut_Sevim_Expert_Systems_in_Agriculture.pdf) on March 21, 2018

10. Soja, A.M. and Soja G. (2007). Effects of weather conditions on agricultural crop production in Austria between 1869 and 2003. *Die Bodenkultur* 58 (1–4)
11. S. R. Nandurkar, V. R. Thool and R. C. Thool “Design and Development of Precision Agriculture System Using Wireless Sensor Network”.
12. Sun Shin, et.al., (2009). Development of Field Monitoring Server System and Its Application in Agriculture. IFIP International Workshop on Software Technologies for Embedded and Ubiquitous Systems. *Software Technologies for Embedded and Ubiquitous Systems* pp 121-130. [https://link.springer.com/chapter/10.1007/978-3-642-10265-3\\_12](https://link.springer.com/chapter/10.1007/978-3-642-10265-3_12)
13. K.C. Vining. (2007). Effects of Weather on Agricultural Crops and Livestock: An Overview. *International Journal of Environmental Studies* Vol 36, 1990 – Issue 1-2. February 24, 2007. <https://www.tandfonline.com/doi/abs/10.1080/00207239008710581?journalCode=genv20>.