



GLOBAL JOURNAL OF COMPUTER SCIENCE AND TECHNOLOGY: C
SOFTWARE & DATA ENGINEERING
Volume 22 Issue 2 Version 1.0 Year 2022
Type: Double Blind Peer Reviewed International Research Journal
Publisher: Global Journals
Online ISSN: 0975-4172 & Print ISSN: 0975-4350

Steam Package Boiler Expert System for Control and Maintenance of Fertilizer Plants using Rule-Base Fuzzy Logic

By Aziboledia F. Boye, Nuka D. Nwiabu & Bennett E. Okoni

Rivers State University

Abstract- Generally, expert systems have been found very useful and even in fertilizer plants it has been deployed in handling operations in critical sections, such as material handling systems, online detection systems, granulation, air compressor among others. This paper presents research work for steam package boiler expert system for control and maintenance of fertilizer plants using rule-base fuzzy logic hybrid system, which has not been benefited much from expert system. The system handles cause of boiler failures in terms of controlling and maintaining the functional chemical components of the boiler drum and feed water parameters. validation on the system consistency, correctness, and its precision with six (6) steam package boiler parameters test value cases was conducted involving fourteen (14) fertilizer plant boiler domain partitioners. The boiler drum and feed water qualities with less or higher test value worst-cases validates the boiler system, showing each of the parameter's bar turns red, as displayed on the boiler's panel, while on test value best-cases, validates the system, displaying green on the boiler's panel bar as users entered the right value of parameters as design specification.

Keywords: expert system, rule-base system, fuzzy logic, steam package boilers, dynamic simulation.

GJCST-C Classification: DDC Code: 623.873 LCC Code: VM741



STEAMPACKAGEBOILEREXPERTSYSTEMFORCONTROLANDMAINTENANCEOFFERTILIZERPLANTSUSINGRULEBASEFUZZYLOGIC

Strictly as per the compliance and regulations of:



RESEARCH | DIVERSITY | ETHICS

© 2022. Aziboledia F. Boye, Nuka D. Nwiabu & Bennett E. Okoni. This research/review article is distributed under the terms of the Attribution-NonCommercial-NoDerivatives 4.0 International (CC BY-NC-ND 4.0). You must give appropriate credit to authors and reference this article if parts of the article are reproduced in any manner. Applicable licensing terms are at <https://creativecommons.org/licenses/by-nc-nd/4.0/>.

Steam Package Boiler Expert System for Control and Maintenance of Fertilizer Plants using Rule-Base Fuzzy Logic

Aziboledia F. Boye ^α, Nuka D. Nwiabu ^ο & Bennett E. Okoni ^ρ

Abstract- Generally, expert systems have been found very useful and even in fertilizer plants it has been deployed in handling operations in critical sections, such as material handling systems, online detection systems, granulation, air compressor among others. This paper presents research work for steam package boiler expert system for control and maintenance of fertilizer plants using rule-base fuzzy logic hybrid system, which has not been benefited much from expert system. The system handles cause of boiler failures in terms of controlling and maintaining the functional chemical components of the boiler drum and feed water parameters. validation on the system consistency, correctness, and its precision with six (6) steam package boiler parameters test value cases was conducted involving fourteen (14) fertilizer plant boiler domain partitioners. The boiler drum and feed water qualities with less or higher test value worst-cases validates the boiler system, showing each of the parameter's bar turns red, as displayed on the boiler's panel, while on test value best-cases, validates the system, displaying green on the boiler's panel bar as users entered the right value of parameters as design specification. The expert system prevents damaged and malfunctioning as control the alkalinity, prevent scaling, both mechanical & chemical corrosion, forming, correct pH values and then the conductivity which deals with the feed boiler water and monitored the level in the boiler drum using the industry parameters (pressure, temperature, level and flow).

Keywords: expert system, rule-base system, fuzzy logic, steam package boilers, dynamic simulation.

I. INTRODUCTION

The discovery and development of expert systems recorded since in the early 1970s until today. Expert systems are an offspring of the more general area of study known as artificial intelligence (AI) (Pandit, 2013). An expert system is computer program that contains a significant portion of the specialized knowledge of a human expert in a specific, narrow domain, and emulates the decision-making ability of the human expert in that area (Emmanuel & Adekunle, 2012). Expert systems are one area of artificial intelligence. Expert system is computer software had been designed for Simulates human expert in acts and activates , by the system's capability to find new facts

Author α ρ: Department of Computer Science, Rivers State University, Port Harcourt, Nigeria.
e-mails: bayelsaforprogress2022@gmail.com,
nwiabu.nuka@ust.edu.ng, bennet.okoni@ust.edu.ng

from available facts and render advice, to teach and execute intelligent tasks (Jabbar & Khan, 2015). Expert system answer to questions about specific problems by inference, including inference of human knowledge that is experts in the field. expert systems should be able to explain the reasoning process and conclusion for the final user contributed by Simin et al., (2013). In expert systems, the knowledge to develop the system is derived from human experts (hence the name) (Tripathi, 2011). According to (Pandit, 2013), one of the principal attractions of expert systems is that they enable computers to assist humans in many fields. These systems are rule-based systems are used to store and manipulate knowledge to interpret. A rule consists of two parts: condition (antecedent) part and conclusion (action, consequent) part, i.e.: IF (conditions) THEN (actions) Antecedent part of the rule describes the facts or conditions that must exist for the rule to fire. Consequent describes the facts that will be established, or the action that will be taken or conclusion that will be made. Information in a useful way. They are often used in artificial intelligence applications and research (Pandit, 2013). Knowledge is the key success in the performance of an expert system. Acquisition of the desired knowledge for the problem domain was obtained from intelligent human experts, said Adekunle et al., (2018). Expert Systems have been designed to assist in solving set of various problems, for instance, expert systems for designing and planning, classification & identification, prediction, Repairs, forecasting, discovery, diagnosis, monitoring control (Tan et al., 2016) etc. however, expert system for control and maintenance of steam package boiler is new as this was not benefitted and so specifically deployed in fertilizer plants.

II. LITERATURE REVIEW

Mrudula (2013) gives reasons on his experts review article, that expert system models the knowledge of the human expert, both in terms of content and structure. His conclusion remains that one of the principal attractions of expert systems is that they enable computers to assist humans in many fields, and that these systems are rule-based systems are used to store and manipulate knowledge to interpret. According

to Amit (2012), the impurities found in boiler water depend on the untreated feed water quality, the treatment process used and the boiler operating procedures.

a) *Expert System Theory*

Generally, the higher the boiler operating pressure, the greater will be the sensitivity to impurities. Therefore, the American Trainco, Inc. (2006), states operators (users) are responsible for control and maintaining the boiler in a safe and efficient manner with sound engineering practices and manufacturer's specified maintenance procedures. Mrudula (2013) describes different types of expert systems. They are rule-based expert system, fuzzy expert system, frame based expert system, and hybrid expert systems, many expert systems are in real use and in the future one is likely to see more expert systems packaged with domain knowledge being sold. Amit (2012) added that boiler devices comprise of feed water system, steam system and fuel system, and that industries worldwide are going through an increasing and stiff competition and increased automation of plants, like the Ovation expert system. Seán et al., (2014) suggested in their paper that an expert system performance could discover excessive levels of blow down in steam package boilers, and diagnose the reason, which could be related to feed water conductivity, or component issues, which becomes necessary and in line with the main area were this dissertation is providing solutions.

b) *Expert System Research on Maintenance*

Edgar et al., (2010), contributed by developing an expert system for fault diagnostics in condition-based maintenance and that the goal of the system is provided to the non-experts in industrial maintenance with a list of possible failure modes, decisions to be adopted. Affirmed by Nwaibu & Adeyanjo (2012), is the development of user centered design approach to situation awareness which if applied to system will certainly aid the operation of the system.

Cucu et al., (2009) examining the causes of equipment failure and malfunction been a central application field of expert systems or of data bases, in general, Chee et al.,(2016), exploits the enhancement of expert systems in engineering, and therefore, an expert system implies into the engineering and manufacturing process can provide greatest assistance for operational workers during performances and deal with critical and important tasks. Bretz (1990) discussed on a comprehensive expert system that assists in power plant boiler failure analysis and the maintenance planning subsystem automatically prepares daily repair schedules, a work estimation plan, and work specifications. Konstantin, et al., (2020) discussed that ES are very advantageous for steam turbine unit (STU) diagnosis.

c) *Expert System Research on Control*

Emerson Process Management Power and Water Solution Inc (2011), Ovation expert system was designed to help you achieve operational excellence and create a sustainable competitive advantage, with standard hardware platforms, operating systems, and network architectures.

Krishan (2016), proposed a fuzzy expert system, using fuzzy control design a simulation system of fuzzy logic controller for water tank level control by using simulation package which is Fuzzy Logic Toolbox and Simulink in MATLAB. Anabik & Denis (2012), on boiler temperature and water control, designing an expert system, using fuzzy logic on FLC based boiler control, the proposed method consists of two sections. first section is to develop a steam temperature monitoring and control system and the second section consists of water level control. For both sections Fuzzy Logic Control will be used. Celin et al., (2016) proposed modeling and control of a 200 MW power plant using the embedded fuzzy approach. The embedded fuzzy based boiler control consists of models, and the output of the network is the interpolation of the models' using memberships.

In line with power evaluation and control, a fuzzy based expert system named Nuclear Power Plant Operator Evaluation Expert System (NPPOEX) is one of the latest expert systems which shows the use of expert system techniques in the personal evaluation process, Yangping et al., (2011).

Harald & Georg (2015) proposed Expert Systems (ES)– Smart Solutions for Power Plants that can support operators and engineers in different areas. Monitoring systems like SR::EPOS enable continuous gathering and analyzing of data and thus can help to detect various problems very fast to avoid a reduction of efficiency or damages

Marco et al., (2003) and Tavira-Mondragón et al.,(2011) agreed that Control remaining the center of operations in the industries, Seán et al., (2014) said operator expertise is generally capable of reacting to faults and performing corrective measures, guidance using expert systems will improve operation and reduce downtime.

III. METHODOLOGY

According to Anne (2013), when conducting research or degree projects, methods and methodologies are essential to plan and steer the work to achieve proper, correct, and well-founded results, and on disciplines within computer sciences, the focus is often on the work with the research rather than methods.

To produce a good system that will meet functionality and performance for users in boiler control and maintenance for fertilizer plants, the researcher

brought in his computing and instrumentation engineering knowledge geared towards his working experience of more than ten (10) years alongside with the domain practitioners to understand more of the activities of the plant. To attain these task or objectives, is by integrating action research method and object-oriented development (OODA) for the modelling.

a) Action Research Method

According to Bryman and Bell (2011), action research is “an approach in which the action researcher and a client collaborate in the diagnosis of the problem and in the development of a solution based on the diagnosis. One of the main characteristic traits of action research relates to collaboration between researcher and member of organization to solve organizational problems. In line with the quantitative and qualitative research approach proposed by Kusumarasyati, (2016), the method has advantages added Bryman & Bell (2011).

Both the numerical values for the quantitative and non-numerical values for the qualitative were all under technical, practical, and emancipatory action research. The numerical values are from the boiler drum recommended quality and feed water recommended quality, whereas the non-numerical entails the boiler problems and causes extracted from the O&M of fertilizer plant manual. Also, the researcher conducted one-on-one interview with fourteen (14) of the fertilizer plant boiler domain practitioners, carrying out dynamic simulations during the design of proposed system, changes were made based on their recommendations on the application on consistency, correctness, and its precision. The dataset numeric values are corresponding to the physical or chemical state of the boiler system, control measures such as shutdown, bidirectional or one directional flow, open on excess fluid, or close on excess fluid can be used to control the performance of the steam package boiler to keep it in a workable condition. The performance and health of the steam package boiler can be control, measured and monitored using process measuring, control and sensing devices such as pressure gauges, temperature sensor (transducers), flow and level gauges, actuating valve etc. which are incorporated in the proposed system designed. The idea is to take all the useful dataset from the boiler manual according to its performance and capability in different operation points to model better system for plant control and maintenance as stated by Michael (2016), same as applied in user centered design approach to situation awareness, Nwiabu & Adeyanju (2012).

b) Objective-Oriented Development Approach

Nabil & Govardhan (2012) describe object-oriented (OO) approach as a system development methodology that follows an iterative and incremental approach to systems development. In each increment or phase, the developers move through the activities of gathering requirements, analyzing the requirements, designing the system, implementing the design, and testing the system. Adetokunbo et al., (2013) added that object-oriented approach models its processes using objects. That is, the solution of problems can be seen as a set of objects or computations performed in the context of objects. Data and the processes that act on the data are encapsulated within every object. Each object's data (attributes or states) are the properties that relate to the object.

Nabil & Govardhan, (2012), added that object-oriented development approach (OODA) uses a set of diagramming techniques known as the Unified Modeling Language or UM and focuses on the three architectural views of a system: functional, static, and dynamic, makes use of iterative and incremental steps, it gives opportunity to manage changes as they occur to user requirements. So, it is more prone to user satisfaction. In this research work, the steam package boiler is object to be controlled and maintained. The Java programming language is suitable for the proposed system development because each module in the system is seen as classes, this gives the environment to develop a user interface for interaction with the system.

IV. EXPERT SYSTEM ARCHITECTURE

The expert system architecture of the steam package boiler rule-base system and fuzzy logic is shown in Fig1. It shows the encoded knowledge of the domain expert put into the system's database where the inference engine would make use of it to process and determine the working state and errors of the system.

When the system runs on the manual operation mode (MOM), the user (field operators/engineer) enters the correct parameter set points which enable a corresponding output from the input signal and expected value of the affected plant system as authorized by their plant shift-in-charge (SIC) or plant operations manager. In the expert system shell, data flow bi-directional to check values from plant (field instruments) and from field operator or process system engineer navigating the system.

The description of the system architecture as shown in Figure1 below, has the processes of both fuzzification and defuzzification, which plays major roles in the system architecture. The fuzzy logic is found in the part of the inference engine, where the software system converts rules to code and codes back to rules.

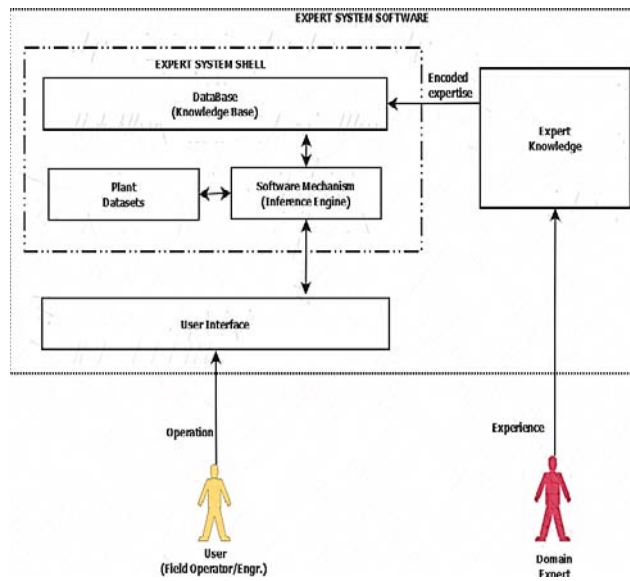


Figure 1: The Expert System Architecture

Domain Expert: The domain expert is the personnel either designing the ES shell or putting in his/her knowledge into the system. It has a ready and mostly accurate knowledge and experience on the proposed system shell to be designed. The expert then encodes their knowledge into the system, by making it understandable for the machine to read by fuzzification.

Knowledge Base (KB): The KB is the part of the ES shell which holds the encoded expert knowledge where the inference engine gets its own knowledge. It is knowledge warehouse or library of the entire ES shell.

Datasets/Software Mechanism (Rule of Engine): This is the process of converting a fuzzy system statement or expression into a software usable or understandable language. The fuzzified expression or language is in the form of a fuzzy system membership form. This is the process where the software makes use of the datasets in the system as encoded by the domain expert.

Plant Datasets: The plant datasets are then extracted from the inference engine (core of the fuzzy system) to be used for proper working of the plant. This process is bi-directional where the plant gets its datasets from the inference engine and gives its current datasets working condition to the inference engine for control.

User interface: this is the part of expert system architecture that helps the user to be in contact with the system so we can consider it as the main engine of expert system.

The User (Field Operators/Panel Engineers): The user on operations logs into the main system with an authenticated username and password. Users carried out required corrections of errors on the UI when the system is running on MOM and monitor and maintained the progress of the system on AMOs.

a) *Steam Package Boiler Rule-Base Fuzzy Logic*

The system has a inference kernel and a knowledge-based linked. The inference kernel (engine) is executed periodically to determine system output based on current system input. The knowledge-based contains membership functions and rules.

Fuzzification: The current input values are compared against stored input membership functions, usually in a program loop structure to determine the degree to which each linguistic variable of each system is true.

Defuzzification: Dissolves multiple degree ambiguous by putting raw fuzzy outputs into a composite numerical output.

Rule-Base Evaluation: on the rule-base evaluation, this processes a list of rules from the knowledge-based using current fuzzy input values to produce a list of fuzzy output linguistic variable.

Therefore, the system has the processes of both fuzzification and defuzzification, which plays major role in the proposed system architecture. The fuzzy logic is found in the part of the inference engine, where the software system converts rules to code and codes back to rules.

V. STEAM PACKAGE BOILER EXPERT SYSTEM DESIGN

a) *Datasets*

The datasets used are extracted from Section C, Boiler Manual (2020). Boiler drum water and Feed water recommended qualities datasets are used for the design of the fuzzy logic system. According to Amit (2012), the impurities found in boiler water depend on the untreated feed water quality, the treatment process used and the boiler operating procedures. As a rule, the

higher the boiler operating pressure, the greater will be the sensitivity to impurities. The boiler safety, emergency procedures datasets are used because that area is where fault solutions are placed. The datasets are placed in a tabular form as shown below in table 1 and 2.

Table 1: Boiler Drum Water Recommended Quality

Parameters	Unit	Value
Ph Value	-	10.8 - 11.4
Alkalinity as CaCO ₃	ppm	190
Sodium Phosphate as PO ₄	ppm	29 - 34
Total Dissolved solids	ppm	143
Silica SiO ₂	ppm	4
Oil and Organic matters	ppm	Nil

Table 2. Feed Water Recommendation Quality

Parameter	Unit	Value
General appearance		Clear and Colourless
Total hardness as CaCO ₃	ppm	Commercial zero
Total Fe	ppm	<0.025
Total Cu	ppm	<0.02
Oil and Organic	ppm	<0.1
Ph Value At 25°C	ppm	8.5 - 9.5
Total dissolved solid	ppm	<1.5
Reactive SiO ₂ max	ppm	<0.20

b) System Use Case Diagram

Use case diagram give simple overview of an interaction of the proposed system users can have more about what is happening. This detail can either be a simple textual, a structural description in a table or a sequence diagram and it is used to support requirement elicitation. This use case diagram shows the user's (field operator/engineer's) interaction with the proposed system, here the user navigates the proposed system and get the expected results/output.

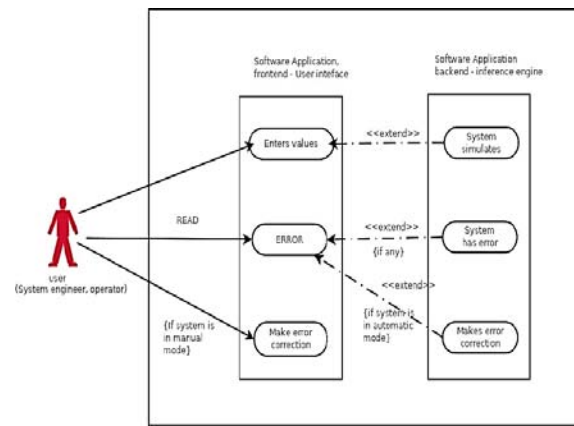


Figure 2: Use Case Diagram of the System

The use case diagram shows the actors (field operator/engineer) using the system. The user enters values required for the steam package boiler, to keeps the system on control, maintaining the required set points of pH values, feed water and boiler drum water level qualities etc., reduced downtime and boiler damages. When the system panel indicator displays red on either side of panels due to drifting of the steam boiler parameter set points, the user (field operator/engineer) should be able to see it and effect changes. On a MOM, the user makes more corrections during navigating the system, while the system on AOM, restores system errors on either boiler drum or feed water qualities as parameters drifted from their set points which effect system and make changes to keeps the boiler working efficiently.

c) System Activity Diagram

The activity diagram reveals the events of the user (field operator/Engineer) using the system. The user opens the app, check the system values. if the boiler runs with correct values as design specifications, the system runs smoothly and efficiently, otherwise, the user inputs the required parameter values to control and maintain the steam boiler system.

This system using the rule-base system & fuzzy logic technologies was designed to run in two modes, manual operation mode (MOM) and automatic operation mode (AOM). The auto run was selected due to faster and quicker response for equipment operations as instrument air is on FO/FC condition.

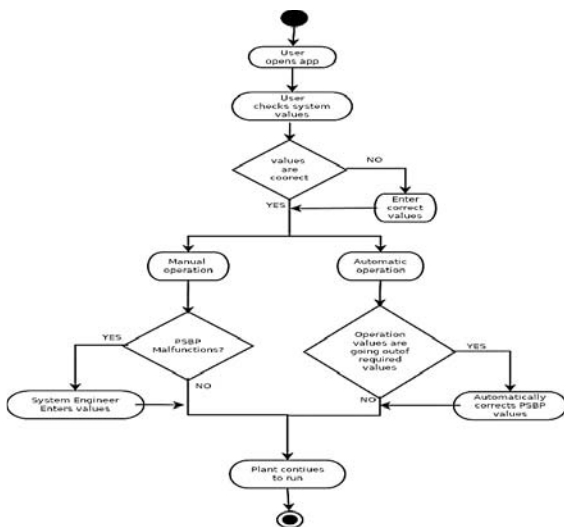


Figure 3: System Activity Diagram

On MOM, when the system malfunctioning is detected by a drift in setpoint parameters the user (field operator/engineer) inputs values for corrections which enables efficient control and smooth running of the steam boiler device, otherwise, the plant operation manager required for the maintenance team (Mech, Electrical and Instrument) to carry out maintenance by bye-passing required field equipment's. If the system is runs on AOM, and there is erratic or faults detections, and values are drifting from required default parameter setpoints, the system would automatically make corrections which aid continues running of boiler plant.

The process of designing this system, is aimed at providing detailed dataset from Table1 and Table2and other system elements that enable the development and implementation reliable. The system is designed is such a way that, the output variables or condition of the steam package boiler controls its input variables or condition of the boiler device. The pH value at 25oCin the table above has a range of value suitable for the application of fuzzy logic system. The FLS is designed as follows.

Algorithm

1. Define linguistic variables and terms (start)
2. Construct membership function for the terms (start)

Table 4: Membership function table -membership function replaced with actual numeric values. The actual rule from the inference engine will be as follows:

State	Target (s)				
-	Very/L	Low	Normal	High	Very/H
Very/L	No/C	8.75	9	9.25	9.5
Low	8.5	No/C	9	9.25	9.5
Normal	8.5	5.75	No/C	9.25	9.5
High	8.5	8.75	9	No/C	9.5
Very/H	8.5	8.75	9	9.25	No/C

3. Construct knowledge base of the rules (start)
4. Construct crisp data into fuzzy datasets using membership functions (Fuzzification).
5. Evaluate rules in the Rule Base (Inference Engine)
6. Combine results from each rule (Inference Engine)
7. Convert output data into non-fuzzy values (Defuzzification)

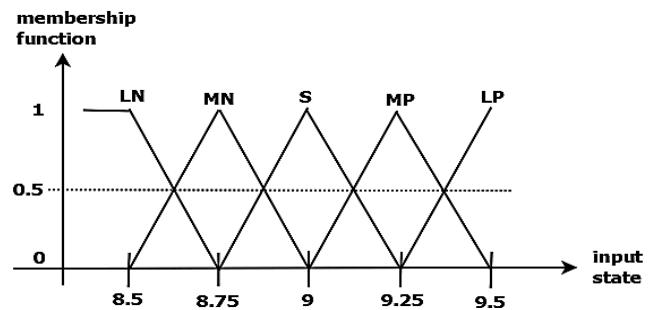
Development

1. State(s) = {very-low, low, normal, high, very-high}
2. Constructing membership function

Table 3: Ph Value at 25oc Showing Membership Values

M/Class	Class/R	Grade
LP	x = 9.5	L/value
MP	x = 9.25	H/Average
S	x = 9	Average
MN	x = 8.75	Lower/Average
LN	x = 8.5	Smallest/Value

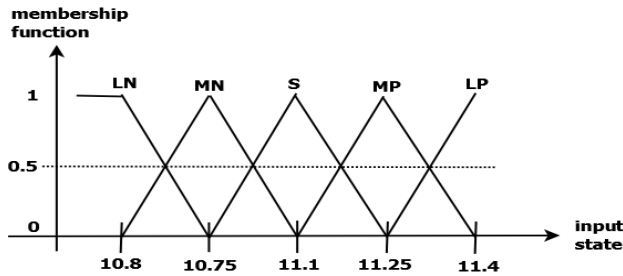
The above table3 has been used to design a membership function graph for the membership values in the table, as calculated with the datasets of pH value at 25oC ranging between8.5ppm (actual minimum value) to 9.5ppm (actual maximum value).



Graph 1: A graph of membership function of pH value at 25oC ranging between 8.5ppm (Mini value) to 9.5ppm (maxi value). 1and 4. Constructing a Knowledge Based Rule from the membership function.

From the boiler drum water recommended quantity and following the same steps of 1, the pH value (10.8 - 11.4) and the Sodium Phosphate as PO₄ (29 - 34) Fuzzy Logic Rule Base System will be developed using the parameters from table1.

The steps in the algorithm of 1a are followed in the system design and development of the pH value and Sodium Phosphate as PO₄ membership function and fuzzy logic rule base system.



Graph 2: Show above is a graph of the membership function of pH ranging between 10.8 ppm (min value) to 11.4 ppm (maxi value).

R1: IF STATE= (10.8 OR 10.75) AND TARGET = 11. THEN ALERT

R5: IF STATE= (10.8 OR 10.75 OR 11.1 OR 11.25) AND TARGET = 11.4 THEN ALERT

Listing 5.a

R1: IF STATE= (10.8 OR 10.75) AND TARGET = 11.1 THEN SET STATE=11.1

R5: IF STATE= (10.8 OR 10.75 OR 11.1 OR 11.25) AND TARGET = 11.4

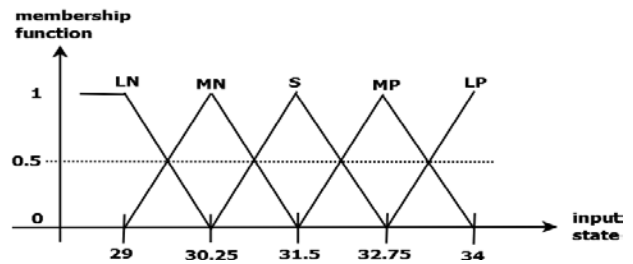
THEN SET STATE=11.1

Listing 5.b

Listing 5. Listing 5.a Manual mode, and Listing 5.b Automatic mode, are both the final Rule-Base System used in the Inference Engine of Sodium Phosphate as PO₄ ranging between 10.8ppm (mini value) to 11.5ppm (maxi value).

Table 5: Membership Function of Numeric Values of pH Ranging Between 10.8 ppm (mini value) to 11.4 ppm (maxi value) table.

State	Target(s)				
	V/Low	Low	Normal	High	V/High
-	No/C	10.75	11.1	11.25	11.4
V/Low	No/C	10.75	11.1	11.25	11.4
Low	10.8	No/C	11.1	11.25	11.4
Normal	10.8	10.75	No/C	11.25	11.4
High	10.8	10.75	11.1	No/C	11.4
V/High	10.8	10.75	11.1	11.25	No/C



Graph 3: A Graph of Membership Function of Sodium Phosphate as PO₄ ranging between 29ppm (minimum value) to 34ppm (maximum value).

Table 6: Membership Function of Numeric Values of Sodium Phosphate as PO₄ Ranging

between 29ppm (Min value) to 34ppm (Maxi value).

State	Target(s)				
	V/low	Low	Normal	High	V/high
-	No/C	30.25	30.5	32.75	34
V/Low	No/C	30.25	30.5	32.75	34
Low	29	No/C	30.5	32.75	34
Normal	29	30.25	No/C	32.75	34
High	29	30.25	30.5	No/C	34
V/High	29	30.25	30.5	32.75	No/C

R1: IF STATE= (29 OR 8.5) AND TARGET = 9 THEN ALERT

R5: IF STATE= (29 OR 8.75 OR 9 OR 9.25) AND TARGET = 9.5 THEN ALERT

Listing 6.a

R1: IF STATE= (29 OR 30.25) AND TARGET = 30.5 THEN SET STATE=30.5

R5: IF STATE= (29 OR 30.35 OR 30.5 OR 32.75) AND TARGET = 34

THEN SET STATE=30.5

Listing 6.b

Listing 6. Listing 4.a Manual mode, and Listing 4.b Automatic mode, are both the final Rule Base System used in the Inference Engine of pH value at 25oC ranging between 29ppm (mini value) to 34ppm (maxi value).

d) MembershipData and Fuzzy Logic System Class Diagram

The class diagram of the designed project class files is written in Java programming language (JPL). The diagram shows the private, public methods and variables of each class. It also shows how each class relates to one another, through inheritance (i.e., extension) or implementation (the use of interface class) as show by the lines. The expert system of the proposed system has two major selected class for the purposed of this research, which is the Membership Data class, and the Fuzzy Logic System are shown below.

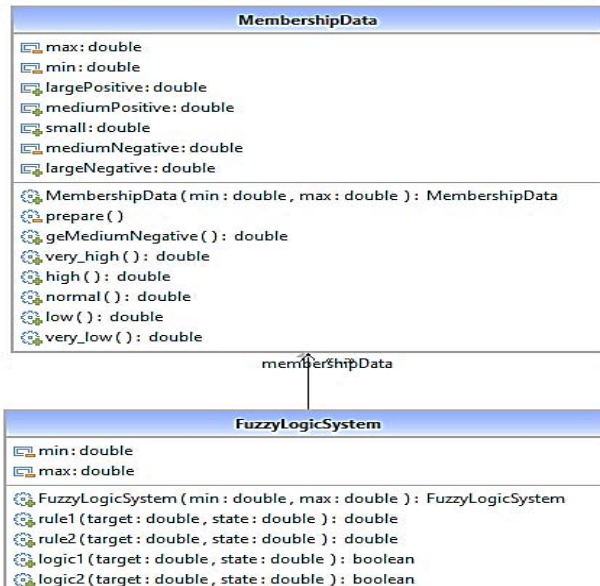


Figure 4: MembershipData and Fuzzy Logic System Class Diagram

e) System User Interface

The main purpose of this application user interface is to enhance the field operator/engineers with less effort to navigate and receive maximum desired outcome from the system. The steam package boiler ES Graphical user interface is menu-driven type and is shown in Fig7 below. Functions of the system were carried out with a dynamics simulation process in this research work.

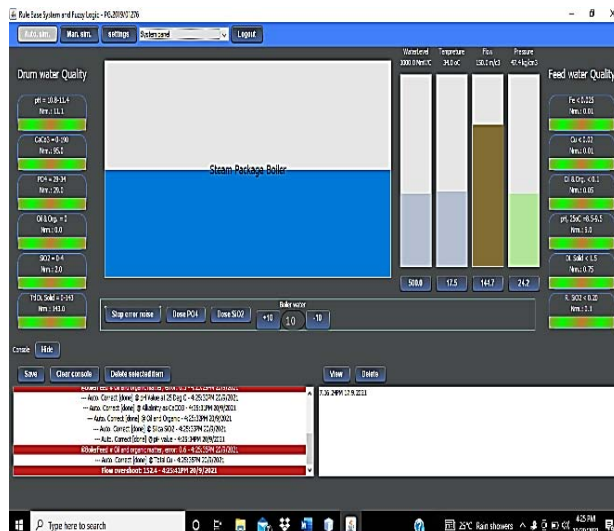


Figure 5: System User Interface

All manual and auto operations take place on this UI, it shows the window style view of the entire structure of the proposed system. Schematically it shows the drum water quality and feed water quality panels, steam package boiler drum, water level, temperature, flow, pressure, console etc. on its panel. Also, on the menu bar of the application shows the Auto sim button, manual sim button, setting button, system panel dropdown and logout menu button (Figure7).

f) Admin and User login Interface

This is the interface for both admin authorization and user login to have access to the main application.

The UI is designed to enable admin to provide his login details before the user (field operator/engineers) can have access to the main application. The Exit button is clicked to close the application. When credentials are correct the system gives access to the user to access the main application screen as shown in Figure 8.

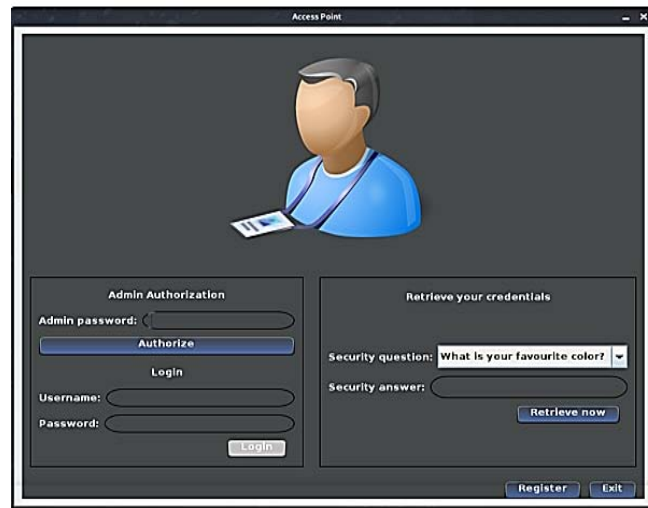


Figure 6: Admin and User Login Interface

g) User Registration Window

On the registration window, the admin double clicking on the Expert System icon on the Desktop and splash up of the user access point window comprising of register and exit button.

The system is design for the admin to grant access to the user before he/she can have access to the system. An evaluated and validated window result for a successful registration process of a New User (Field operator/Process Engineer) carried out by the admin is shown in Figure7 below:

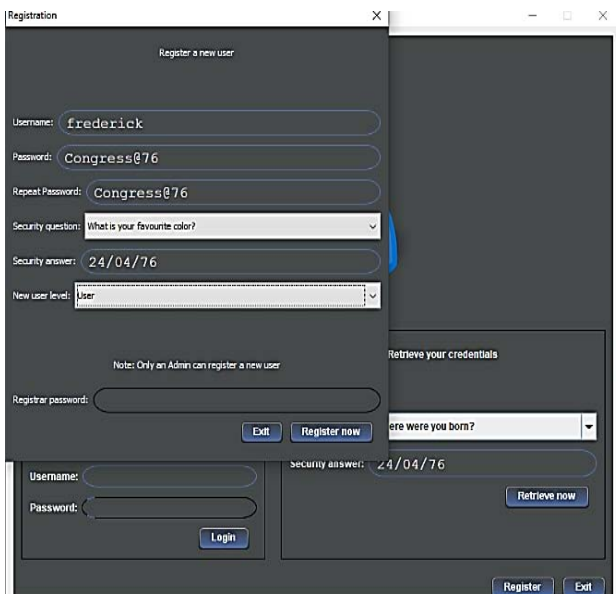


Figure 7: User Registration Window

Admin Authorization Window: This comprises of the following textbox, Admin password and authorize button, the (field operator/Engineer) username, password, and login button. **Retrieve your credentials Window:** it also comprises of the text boxes, security question, security answer and retrieve now button.

The above window interface also assist user with a forgotten login credentials, user (field operator/engineer) is expected to choose a security question and type the answer in the given text box and click the "Retrieve Now" button as shown in figure 6.

h) The Main System Control Panel Interfaces

The main control panel interface is where the users will navigate, monitor, controlled, and maintained the real-time conditions and readings (default parameters of the steam package boiler expert system with their operating setpoints for better efficiency, reliability, performance, and product throughput. The main control panel interface comprises of seven (7) panels as shown on Fig7. above.

- The Top Control Panel
- The Drum Water Quality Display Panel
- The Feed Water Quality Display Panel
- The Level, Temperature, Flow and Pressure Bars
- The Steam Package Drum
- The Bottom Control Panel

Each of these operational panels are describe below for better understanding.

The top control panel: This is menu situated on top of the main application comprises of simple "automatic and manual sim" buttons", "setting" button, panel selection drops down menu bar and "logout" button. The automatic simulation button is used to run and navigate the steam package boiler in an Auto Mode where all errors are corrected by the designed fuzzy logic system.

The Drum Water Quality Display Panel: This drum panel on the main application displays the real-time parameter values of the Total Hardness as CaCO₃ in ppm, TI (ppm Fe), TC (ppm Cu), Oil & Organic, pH value at 25 Deg. C, total dissolved solids (ppm TDS), and the Reactive Silica max (ppm SiO₂) of the water in the boiler drum, in their respective range of values. When there are low or high

values in the drum water quality parameters as calibrated setpoints desired for running of the steam package boiler ES, the green horizontal bars on the drum water panel turned red or green as shown fig8. Also, the boiler drum water quality should be continuously monitored and suitable adjustment in blowdown is carried out to maintain the drum water real-time values as per the steam package boiler design recommendations.

The Feed Water Quality Display Panel: This feed water panel on the main steam package boiler displays the real-time values of running plant with the setpoint of pH value, alkalinity of CaCO₃ in ppm, Sodium Phosphate as PO₄, total dissolved solids (ppm TDS), Reactive Silica max (ppm SiO₂), and Oil & Organic matters present in the feed as it goes into the steam package boiler drum, in their respective range of values. When there are low or high values in the feed water quality parameters as setpoints desired for the functional operation and running of the boiler system, error will be seen as the horizontal bar indicator turned red on the panel on the feed water quality panel.

The Steam Package Boiler Process Measurement Parameters

The four (4) bars on the main application interface represent these four main process measurements in the industry, first is the water Level in the drum (1000 MmWc), Temperature of the drum (34 Deg. C), Flow of the feed water (150 m/c3), and the Pressure that is built up in the drum as it is heated up (47.4 kg/cm³). These four (4) PMP can be seen on the main SPB main application interface as shown in Figure5. Each of the PMP values on the bar can be reset by mouse clicking the button below each of the parameter bars to get an input popup box. The user input textbox receives only the calibrated range specifies. Inputting right range values into the textbox will remove the red colour indicator on any of four parameter bars as required.

The Steam Package Boiler Drum: The steam package boiler is one the main fertilizer section that is monitored during operations. The boiler system drum can be seen on the main application interface. The water level is monitor with the result obtained from the four industry measurement parameters vertical bars representing pressure, temperature, level, and flow.

The Bottom Control Panel: This panel comprises of the "Stop Error Noise" used to stop any error noise during operations, the noise is coming due to system error, "Dose PO₄" and "Dose SiO₂" buttons are used for dosing as required to maintain feed & boiler water qualities at a desirable level, on clicking either of this button will bring a pop-up window with an input textbox which receives the value from any user (field operator/engineers) of the system.

The Console Panel: This panel is another important located on the bottom control. The result of using the console panel button is seen when it is mouse clicked, it comprises of the save, hide, view, and delete buttons. Each result of these buttons shown in fig10 below.

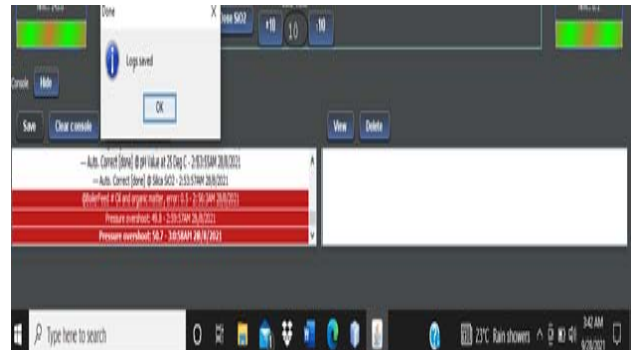


Figure 8: The Control Button

VI. EVALUATION AND RESULTS

The performance of every system after design and installation will be monitored to check if it's working properly, meaning to check if the system meets the design specifications. In other to evaluate, validate the correctness of proposed system by the boiler domain practitioners, the following parameters were used for dynamic simulation, Actual Minimum Range, Actual Maximum Range, Test values Worst-case and Test values Best-case were tested with the following conditions.

Actual Values: These values range are the boiler parameters from minimum to the maximum required limits of the system design specification. The healthy, proper, and effective performance on control and maintenance of the steam package boiler depends on these parameters operating within the required range and limits as shown below on the tabulated Table7 of worst-case and best-case test values.

Test Values: There are two type of test values used in this discussion, the worst-case and the best-case test values.

1. *Worst-Case:* The worst-case value are the values outside the expected functional range of the required plant parameters value. This worst-case value is used to monitor, examine, and evaluate the behaviour of the SPB if the water chemical component quality exceeds or falls below the required set value.
2. *Best Case:* The best-case values are the values which are set within the required functional range of the plant water chemical components.

Table 8: Parameters Test values (Worst-case/Best case) used for the dynamic simulation process to validate the system consistency, correctness, and its precision.

Parameters	AMR	AMR	Tv/Wc	Tv/Bc
BDWQ				
Ph Value	10.8	11.4	10	11.2
Po ₄ (Ppm)	29	34	43	32
Silica SiO ₂	0	4	6	2
FWQ				
Total Fe	0	0.025	2	0.010
Ph@25Deg C	8.5	9.5	8.2	8.9
TDS (ppm)	0	1.50	1.8	1.2

a) Dynamic Simulation of Operational Steam Boiler Drum Water Quality Parameters

The researcher explores a dynamic simulation process alongside fourteen (14) fertilizer boiler domain practitioners on three (3) qualities as displayed on the drum water panel of the boiler system comprising on its pH value, Sodium Phosphate (PO₄) and Silica max (SiO₂).



Figure 9: Drum Water Quality Display Panel

i. Dynamic Simulation for Worst-case and Best-case values for Drum Water Quality on pH value

The results of the dynamic simulation process of the parameter of pH value range of 10.8-11.4 with worst-case pH of 10. The system displaying this value, less than the designed setpoint (10.8), turns red the boiler parameter indicator bar and user clicking gives the system popup request to enter the right value to validate that the pH value of 10 is erratic. Also, the boiler panel displays green as the user enters best-case functional of pH value of 11.2 and this validates the system after evaluation.

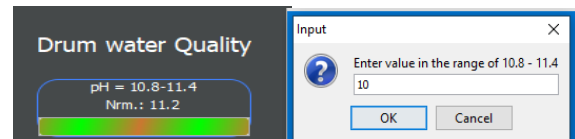


Figure 10: Ph Value of 10

ii. Dynamic Simulation for Worst-case and Best-case values for drum water quality on Sodium Phosphate as PO₄

On the dynamic simulation process of sodium phosphate as PO₄, the user views boiler panel displaying 43ppm of PO₄ as a worst-case value, verifying erratic value, and this turns boiler parameter indicator red. A popup request shows as user clicked on the indicator bar to enters best-case value of 32ppm, which turns the indicator of the PO₄parametergreen, validating the boiler operating in healthy condition. The PO₄systemdesign specification is between 29-32ppm.



Figure 11: PO₄ Simulation Result

iii. Dynamic Simulations for Worst-case and Best-case values for Boiler Drum Water quality on SiO₂

The parameter design range of Silica max (SiO₂) value is 0.0-4.0 ppm. The boiler water quality must remain within its setpoint for the boiler to function efficiently as per design specifications. The results of the simulation with a worst-case of 6ppm, shows erratic display, verifying that SiO₂is high, showing red on the indicator bar. Its requires a user to right value, 2ppm of SiO₂, was entered, which turns parameter indicator bar green, validating the steam boiler running normally.

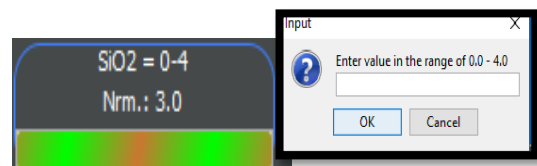


Figure 12: Silica Max Simulation Result

b) Dynamic Simulation for Operational Feed Water Quality Parameters

A dynamic simulation with test value worst-case and best-cases on feed water quality for iron (Fe) ppm, pH value at 25DegC and total dissolved solid (TDS) ppm were carried out and parameters displayed on the panel as evaluated and verified by fourteen (14) fertilizer boiler domain practitioners.



Figure 13: Feed Water Quality Display Panel

i. *Dynamic Simulation for Worst-Case and Best-Case Test Values on Iron Fe (Ppm)*

The iron (Fe) as a default parameter with range of 0.0-0.025ppm was simulated, and the feed water erratically displays worst-case of 2ppm a higher value of Fe, this turns the indicator parameter red. The erratic value was removed as a user clicking and system requesting right value to be entered. The user entered a test value best-case of 0.010 Fe (ppm), which is within the parameter setpoint range, and the parameter bar turns green, validating that the boiler device is enabled and working efficiently.

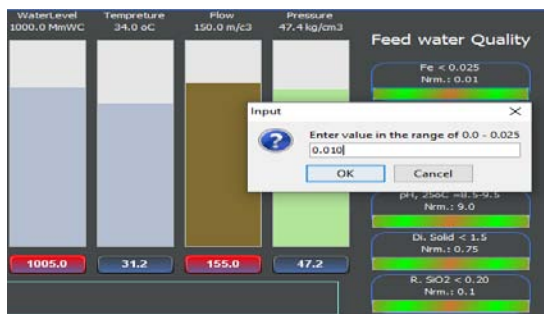


Figure 14: Fe (iron) Simulation Result

ii. *Dynamic Simulation for Worst-case and Best-case values on pH value at 25DegC*

The dynamic simulation results of the feed water quality for pH value at 25 DegC displaying pH value parameters of test value worst-case of 8.2-9.5 is shown below. The boiler system displaying a test value worst-case pH value of 8.2, less than the designed setpoint, turns indicator panel red, a user then clicked on the indicator bar and entered the right value range of pH value of say 8.9 to validate the system. The best-case value simulation which is a pH value of 8.9 @25DegC, turns indicator green, meaning value entered is within the boiler system designed specification.

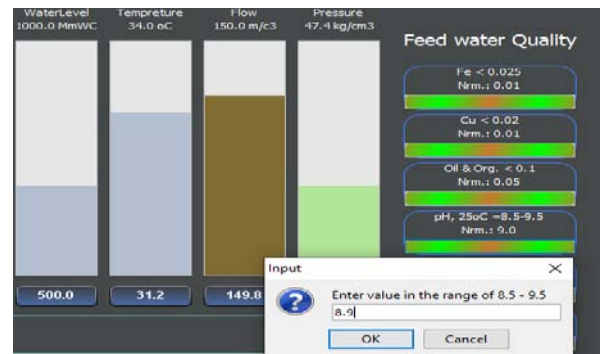


Figure 15: Ph Value at 25degC Simulation Result

iii. *Dynamic Simulation for Worst-Case and Best-Case Values for Feed Water Quality on (TDS) In Ppm*

Finally, a dynamic simulation for total dissolved solid (TDS) parameter was carried out with worst-case value of 1.80ppm and best-case value of 1.20ppm TDS. The feed water TDS panel indicator bar turns red at 1.80ppm which is erratic. A user is requested to enter correct value of the feed water quality at 1.20ppm which turns the TDS bar indicator green, this keeps boiler device in healthy operation.



Figure 16: TDS Simulation Result

c) *Analysis for Mean, Mean Absolute Deviation and Standard Deviation System Errors*

The researcher computes the mean, mean absolute deviation (MAD) and the standard deviation errors (SDE) of both manual and auto running with different time intervals to evaluate and verify which mode of the boiler system was preferable and the number of errors generated. The action research method deployed with quantitative observation of ten (10) consecutive run times of the boiler system on Table 8, comprising system running in manual and auto run. Each time corresponds with the number of errors generated.

Table 9: Proposed System Running on Manual and Auto Errors with Time (Minutes)

System Error Time (Minutes)	System Running on Manual	System Running on Auto
1	3	1
2	6	2
3	6	2
4	6	1
5	6	1
6	8	2
7	9	1
8	11	1
9	11	2
10	12	2

Table 10: Proposed Run System for Mean and Mean Deviation Error on Auto Run

Auto Run True System Error (x)	Mean Deviation Error on Auto Run x - μ
1	0.5
2	0.5
2	0.5
1	0.5
1	0.5
2	0.5
1	0.5
1	0.5
2	0.5
2	0.5
Mean (μ) E = $\frac{\sum x}{n} = 1.5$	(MAD) $\sum x - \mu = 5$

The mean (μ) error of the proposed system running on automatic mode is computed as follows:

$$\text{Mean } (\mu)\text{Error} = (\sum x)/n = (1+2+2+1+1+2+1+1+2+2)/10 = 1.5 \dots (1)$$

Therefore, the mean (μ) error of automatic system run mode is 1.5

The mean deviation error of the steam package boiler system running on auto mode is computed as follows:

$$\text{The Mean Deviation Error} = (\sum |x - \mu|)/n, \dots (2)$$

where x is the true mean error, μ is the mean error and n the sum of system errors in auto run of the proposed system.

$$\begin{aligned} \text{Standard Déviation} &= \sqrt{(\sum |x - \mu|^2)/n}, \dots (3) \\ &= \sqrt{(5^2/10)} = \sqrt{(25/10)} = 1.58113883 \approx 1.58 \end{aligned}$$

From Table10 of the error analysis, the auto run, minimum error is 1 in 1 minute while the maximum error is 2 in 10 minutes. The errors in minute are deduced from the log save error view button on the console and viewing the save logs screen.

On auto run mode, Error needed correction = overshoot + errors, this is subtracted from the errors correction done by the system, i.e., Correction Done-Needed correction = System errors, for instance in 2-minute, the system error gives 2 error on auto run. The overshoot was 8, error was 4, error needed correction is 12, correction was 14. This is the same with 4 minutes etc.

On manual run mode, the minimum error is 3 in 1 minute while the maximum error is 12 in 10 minutes analyzed from the log save error clicking view button on the console. Error margins were not considered during the MOM, since system runs efficiently on auto, whereas maintenance is done more on manual run of the

The Mean Absolute Deviation

$$\text{(MAD) Error} = (\sum |x - \mu|)/n = 5/10 = 0.5$$

In computing the standard deviation of the proposed system error on auto run, we must take the square root of the mean absolute deviation (MAD) squares it, divides by the total number of system errors (n) in auto run.

Table 11: Proposed Run System Mean and Mean Absolute Deviation Error on Manual Run

Manual True System Error (x)	Mean Deviation Error x - μ
3	4.8
6	1.8
6	1.8
6	1.8
6	1.8
8	0.2
9	1.2
11	3.2
11	3.2
12	4.2
Mean (μ) Error = $\frac{\sum x}{n} = 7.8$	(MADE) $\sum x - \mu = 2.4$

The mean deviation error of the proposed system running on manual mode is computed using the formula below:

$$\text{The Mean Deviation Error} = (\sum |x - \mu|) / n, \dots$$

Mean (μ) Error

$$= (\sum x) / n = (3+6+6+6+6+8+9+11+11+12) / 10 = 7.8$$

Therefore, the mean (μ) error of the proposed system running on manual mode is 7.8

The mean deviation error of the proposed system running on manual mode is computed using the formula below:

$$\text{The Mean Deviation Error} = (\sum |x - \mu|) / n,$$

where x is the true mean error, μ is the mean error and n the sum of system errors in auto run of the proposed system.

$$\begin{aligned} \text{The Mean Deviation Error (MAD)} \\ = (\sum |x - \mu|) / n = 24 / 10 = 2.4 \end{aligned}$$

In computing the standard deviation of the proposed system error on auto run, we must take the square root of the mean absolute deviation error (MADE) squares it, divide by the total number of system errors (n) in auto run.

$$\begin{aligned} \text{Standard Déviation} &= \sqrt{((\sum [|x - \mu|])^2) / n} = \\ &= \sqrt{(24^2) / 10} = \sqrt{576 / 10} = 57.6 \end{aligned}$$

Therefore, the SD of proposed system error is 57.6

where x is the true mean error, μ is the mean error and n, the sum of system errors in manual run of the proposed system.

The mean (μ) of the errors for the proposed system running on manual mode is computed as follows:

VII. CONCLUSION

This paper is focused on expert system for control and maintaining steam package boiler parameters of the feed water and boiler drum recommended qualities using a hybrid technology of rule-base system and fuzzy logic. The dynamics simulation performs showed relatively high performance of consistency, correctness, and its precision of the system. The system can be modified, used as a platform by boiler trainers, especially for new intakes in all boilers operated allied industries.

The design system will prevent damaged and malfunctioning as control the alkalinity, prevent scaling, both mechanical & chemical corrosion, forming, correct pH values and then the conductivity which deals with the feed boiler water. Acceptable error margined were not considered during this research work.

Furthermore, we discovered in this paper that from 1 to 10minutesrun time for AUTO RUN form figure17 gives 2.8% errors as compared to the 1 to 10 minutes time interval on MANUAL RUN that gives 80.2% error. This speaks more for users less effort in user interface application usage on AUTO operations better than MANUAL operations, leading with a recommendation that AUTOMATION in industrial plant processes (fertilizer plant) for control and maintenance make it more consistence, correct and precise than MANUAL process of operations.

REFERENCES RÉFÉRENCES REFERENCIAS

1. Amit, K. J. (2012). An Approach towards Efficient Operation of Boilers. International Journal of Scientific & Engineering Research, 3(6).
2. Adetokunbo et al, (2012), Software Engineering Methodologies: A Review of the Waterfall Model and Object-Oriented Approach, International Journal of Scientific & Engineering Research, 4(7).
3. American Trainco Inc. (2006). Boiler Operation Maintenance & Safety Study Guide American Trainco Real World Training, American Trainco, In. www.AmericanTrainco.com
4. Anne Håkansson (2013), Portal of Research Methods and Methodologies for Research Projects and Degree Projects, WORLDCOMP'13 - The 2013 World Congress in Computer Science, Computer Engineering, and Applied Computing, 22-25 July

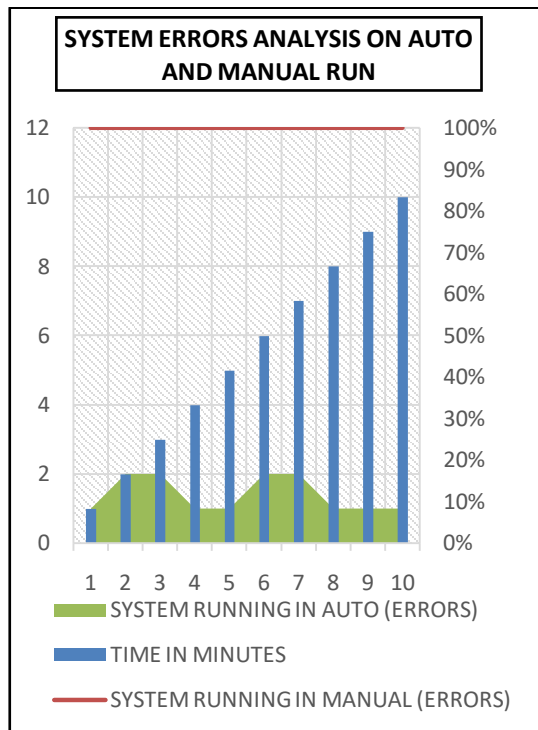


Figure 17: System Error Graphical Analysis on Manual and Auto Run

- 2013, FECS'13 - The 2013 International Conference on Frontiers in Education: Computer Science and Computer Engineering
5. Adefemi A. Adekunle, Peter P. Ikubanni² & Olayinka O. Agboola (2018), An Expert System for Automobile Repairs and Maintenance, *Mindanao Journal of Science and Technology*, Vol.16 (2018) 41-5
 6. Anabik, S. & Ashok, S. D. (2012). Fuzzy Logic Approach for Boiler temperature and water level. *International Journal of Scientific and Engineering Research*, 3(6).
 7. Asabere, N. Y. & Kusi-Sarpong, S. (2012). A Mobile Vehicle Expert System for the Automobile Industry. *International Journal of Engineering Research and Applications*, 2(6), 1108-1123.
 8. Bretz, E.A. (1990), Expert System Enhance Decision Making Abilities of O&M Permission *Electrical world*, 39-48.
 9. Celin S, Anne Frank Joe, Rajalakshmi G, Thaj Mary Delsy T, Jamuna Rani D (2016), Embedded Fuzzy Based Boiler Control, *International Journal of Robotics and Automation(IJRA)*, 5(2).
 10. Cucu I, Codruța D, and Imola D. (2009), Using Expert Systems in The Management of Industrial Equipment Maintenance, *Annals of the University of Petroșani, Economics*, 9(1), 2009, 191-198
 11. Castantio, M. J. P., Hermandes, F. Dedres, A. M., Rantenberge, S. & Billis, A. (2013). Expert Systems with Applications, Fuzzy expert system for predicting pathological stages of prostate cancer, 40, 466-470
 12. Emmanuel C. Ogu, Adekunle, Y.A. (2013), Basic Concepts of Expert System Shells and an Efficient Model for Knowledge Acquisition, *International Journal of Science and Research (IJSR)*, India Online ISSN: 2319-7064, Vol. 2 (4).
 13. Edgar Amaya Simeón & Ricardo Ribeiro Gudwin, (2010), An Expert System for Fault Diagnostics in Condition Based Maintenance, *ABCM Symposium Series in Mechatronics - Vol. 4 - pp.304-313*.
 14. Tripathi, K. P. (2011), "A Review on Knowledge-based Expert System: Concept and Architecture," *Artif. Intell. Tech. - Nov. Approaches Pract. Appl.*, vol. 4, no. 4, pp. 19–23.
 15. JabbarH. K. &R. Z.; Khan, "Survey on development of expert system in the areas of Medical, Education, Automobile and Agriculture," *Comput. Sustain. Glob. Dev. (INDIACom)*, 2015 2nd Int. Conf., vol., no., pp.776- 780, 11-13 March 2015
 16. Krishan K. (2016), Fuzzy Logic Execution in Boiler Control, *IJSRD - International Journal for Scientific Research & Development* | Vol. 4, Issue 05, 2016 | ISSN (online): 2321-0613.
 17. Konstantin E. Aronson, Boris E. Murmanskii, Ilia B. Murmanskii & Yuri M. Brodov, (2020), An Expert System for Diagnostics and Estimation of Steam Turbine Components' Condition, *Int. J. of Energy Prod. & Mgmt.*, Vol. 5, No. 1 (2020) 70-81
 18. Haider, K. J. & Rafiqul, Z. K. (2016). Tools of Development of Expert Systems: A comparative study, *Proceedings of the 10th INDIACom; INDIACom-2016; IEEE Conference ID: 37465 2016 3rd International Conference on "Computing for Sustainable Global Development"*, 16th - 18th March, 2016 Bharati Vidyapeeth's Institute of Computer Applications and Management (BVICAM), New Delhi (INDIA).
 19. Mrudula, P. (2013). Expert System-A Review Article, *International Journal of Engineering Sciences & Research Technology*, 2(6).
 20. Seán, H., Ken, B. & Dominic, O, (2014). Application of Expert Systems to Industrial Utility Equipment Optimisation, *Proceedings of the 14th International Conference for Enhanced Building Operations*, Beijing, China, September 14-17.
 21. Simin, S. S., Fatemeh, M., Fatemeh, A., Marjan, T. & Afsaneh, A. (2013). Investigate the Effect of Expert Systems Application on Management Performance. *Institute of Interdisciplinary Business Research. Interdisciplinary Journal of Contemporary Research in Business*, 478 4(1).
 22. Chee T. et al., (2016), The Application of Expert System: A Review of Research and Applications, *ARPN Journal of Engineering and Applied Sciences*, ISSN 1819-6608, VOL. 11, NO. 4, February 2016.
 23. Jarraya, Y., Souhrie, B., Adel, M. A. & Ajith, A. (2013). Fuzzy Modelling System Based on Hybrid Evolutionary Approach, *ResearchGate*.
 24. Krishan, K. (2016). Fuzzy Logic Execution in Boiler Control, *IJSRD - International Journal for Scientific Research & Development*, 4(05), 2321-0613.
 25. Michael, A. B. B. (2016). Model Predictive Fuzzy Control of a Steam Boiler, Master's degree in Automàtic and Robotics. *Escola Tècnica Superior d'Enginyeria Industrial de Barcelona*.
 26. Muhammad, A., Suleman, A., Humza, W. & Nuka Nwiabu and Ibrahim Adeyanju (2012), User Centered Approach to Situation Awareness, *International Journal of Computer Applications*, (0975-8887), Vol.49-No17, July 2012.
 27. Yunusoglua, M. G. & Selim, H. (2013). Expert System with Applications, A fuzzy rule-base expert system for stores evaluation and portfolio construction: Approach to Istanbul Stock Exchange, 40(3), 908-920.
 28. Yangping Zhou, Xiang Fang and Xu Hong He (2011). "Use of an expert system in a personnel evaluation process". *Proceedings of IEEE International Conference Quality and Reliability*, Beijing. 2011: 15-19