

COLLAB WORKS

2019

Recipe

**Mamas Boys Project:
Brothers Book Club**

The Dark Room

HLX Documentation

Contents:

Lighting Plan

Patch Sheets

Bump-in plan

Instrument Schedule

Returns List

Equipment List

Colour Cut List

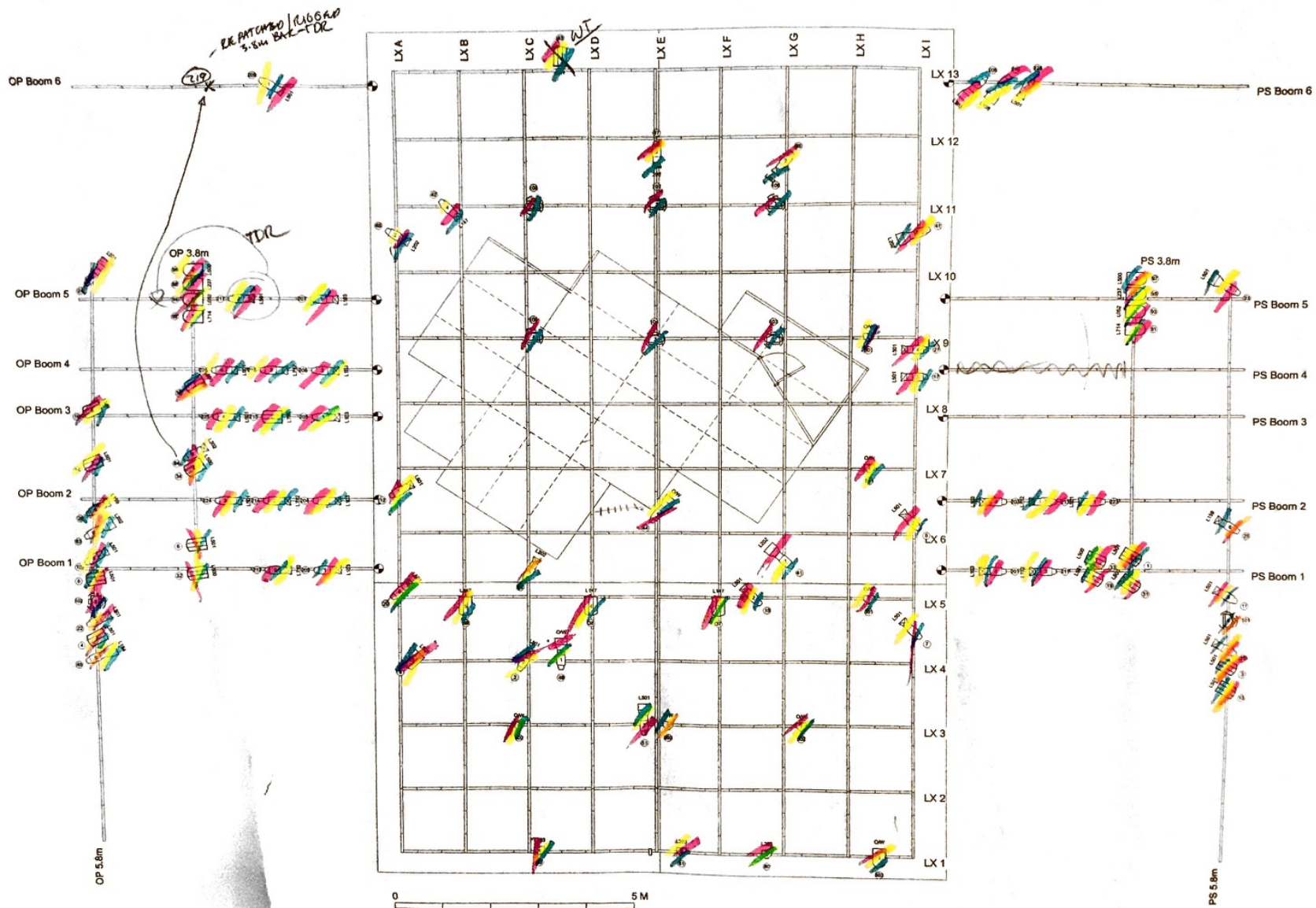
Changeover List

Recipe: HLX Show Plot

MBP: HLX Show Plot

The Dark Room: HLX Show Plot

Troubleshooting Document



1 CW Master LX Plan
Scale: 1:50

RIGGED
FOCUS RD
PATCHED

Notes
- A selection of diffusion including R119 & R132 is required S4 and PC's
- All PC's to have hangers G indicates Gobo use
- Gets Vary Between Shows
- Boom units are measured to the centre of the lens.

Boom heights
PS & OP Boom 1: Unit #1 1m Unit #2 2m
PS & OP Boom 2: Unit #1 1m Unit #2 2m Unit #3 3m
OP Boom 3: Unit #1 1m Unit #2 2m Unit #3 3m
OP Boom 4: Unit #1 1m Unit #2 2m Unit #3 3m
OP Boom 5: Unit #1 1m Unit #3 3m
PS & OP Boom 6: Unit #1 0.5m Unit #2 1m Unit #3 1.5m Unit #4 2m

- Light
- ETC Source4 10deg @ 575w
 - ETC Source4 19deg @ 575w
 - ETC Source4 26deg @ 575w
 - ETC Source4 PARNet @ 575/750w
 - Selecon 1200 PC @ 750/1000w
 - USITT PAR64-MFL @ 1kw
- Moving Light
- Robe Robin 300 LEDWash @ 200w

Typical

COLLAB WORKS
2019

Production Title
Collab Works 2019

Drawing Title	
Master LX Plan	
Designer	Shari Indriani Ann Pistori Matt Schoffen
Client	Meika Clark
Scale	1:50 @ A1
Project	The Loft, Kelvin Grove
Date	18/05/2019
Sheet No	1 of 5

Position: Bar Above Bio Box

Fixture #	Fixture	Colour	Channel	Circuit	Dimmer	Address	Notes
1	Par64 MFL	O/W	503	81	9	107	House Light
2	Parnel	L203	80	-	-	-	Unpatched – emergency face light
3	Parnel	L203	81	82	9	108	Emergency face light
4	Par16 Birdie		505	87	2	24	Spotting light
5	Parnel	L203	82	88	9	97	Emergency face light

Position: LX-3

Fixture #	Fixture	Colour	Channel	Circuit	Dimmer	Address	Notes
1	Parnel	O/W	502	C11	1	2	House light
2	Parnel	O/W	502	C7	1	3	House light
3	Source 4 10deg	L501	51	C6	2	13	MBP Special
4	Parnel	O/W	502	29	1	8	House light

Position: LX-4

Fixture #	Fixture	Colour	Channel	Circuit	Dimmer	Address	Notes
1	Source 4 10deg	O/W	46	C3	4	40	
2	Source 4 19deg	L501	2	23	4	43	
3	Selecon PC	L501	9	C1	2	14	

Position: LX-5

Fixture #	Fixture	Colour	Channel	Circuit	Dimmer	Address	Notes
1	Parnel	O/W	501	C23	2	19	House light
2	Source 4 26deg	L501	15	C22	2	20	

Position: LX-7

Fixture #	Fixture	Colour	Channel	Circuit	Dimmer	Address	Notes
1	Parnel	O/W	501	C35	1	11	House lights

Position: LX-9

Fixture #	Fixture	Colour	Channel	Circuit	Dimmer	Address	Notes
1	Parnel	OW	501	C59	7	76	House light
2	Robe Robin 300		103	C58	Hot Power	366-386	
3	Robe Robin 300		104	C56	Hot Power	408-428	
4	Robe Robin 300		105	C52	Hot Power	450-470	

Position: LX-11

Fixture #	Fixture	Colour	Channel	Circuit	Dimmer	Address	Notes
1	Robe Robin 300		106	C64	Hot Power	345-365	
2	Robe Robin 300		107	3	Hot Power	387-407	
3	Robe Robin 300		108	C70	Hot Power	429-449	
4	Source 4 19deg	L147	42	C61	7	79	

Position: LX-A

Fixture #	Fixture	Colour	Channel	Circuit	Dimmer	Address	Notes
1	Source 4 19deg	L501	20	C13	3	25	
2	Source 4 19deg	L501	12	C26	1	9	
3	Source 4 26deg	L202	65	C49	7	73	TDR Gobo

Position: LX-B

Fixture #	Fixture	Colour	Channel	Circuit	Dimmer	Address	Notes
1	Selecon PC	L147	39	C14	3	26	

Position: LX-C

Fixture #	Fixture	Colour	Channel	Circuit	Dimmer	Address	Notes
1	Source 4 19deg	L202	62	C15	1	1	TDR Gobo

Position: LX-D

Fixture #	Fixture	Colour	Channel	Circuit	Dimmer	Address	Notes
1	Selecon PC	L147	38	C17	3	27	

Position: LX-E

Fixture #	Fixture	Colour	Channel	Circuit	Dimmer	Address	Notes
1	Source 4 10deg	O/W	44	C31	1	10	Recipe special
2	Source 4 19deg	L202	67	4	5	52	TDR Gobo (medium breaker)

Position: LX-F

Fixture #	Fixture	Colour	Channel	Circuit	Dimmer	Address	Notes
1	Selecon PC	L147	37	C20	1	4	

Position: LX-G

Fixture #	Fixture	Colour	Channel	Circuit	Dimmer	Address	Notes
1	Source 4 10deg	L202	61	C21	1	7	TDR special
2	Source 4 26deg	L202	66	C1	4	37	TDR Gobo (medium breaker)

Position: LX-I

Fixture #	Fixture	Colour	Channel	Circuit	Dimmer	Address	Notes
1	Source 4 19deg	L501	7	78	8	91	
2	Source 4 26deg	L501	5	C36	1	12	
3	Source 4 26deg	L501	17	C47	7	74	
4	Source 4 19deg	L501	27	C60	7	77	
5	Source 4 10deg	L202	41	C72	7	82	Recipe Gobo (window)

Position: PS 5.8m Side Bar

Fixture #	Fixture	Colour	Channel	Circuit	Dimmer	Address	Notes
1	Selecon PC	L501	13	73	6	70	
2	Selecon PC	L501	3	74	6	67	
3	Source 4 26deg	L501	21	70	9	102	
4	Robe Robin 300		101		Hot Power	471-491	
5	Source 4 26deg	L501	11	69	8	89	
6	Source 4 19deg	L159	25	63	6	68	
7	Source 4 10deg	L501	23	75	7	81	

Position: PS 3.8m Side Bar

Fixture #	Fixture	Colour	Channel	Circuit	Dimmer	Address	Notes
1	Selecon PC	L500	31	67	5	56	
2	Selecon PC	L501	1	71	8	90	
3	Par64 MFL	L714	91	44	7	83	
4	Par64 MFL	L052	93	43	7	84	
5	Par64 MFL	L237	95	42	8	22	
6	Par64 MFL	L500	97	41	9	23	

Position: OP 5.8m Side Bar

Fixture #	Fixture	Colour	Channel	Circuit	Dimmer	Address	Notes
1	Source 4 10deg	L154	45	89	4	47	
2	Selecon PC	L501	4	61	5	59	
3	Source 4 26deg	L501	22	91	9	100	
4	Robe Robin 300		102	92	Hot Power	492-512	
5	Selecon PC	L501	6	95	5	57	
6	Source 4 26deg	L501	10	97	9	103	
7	Source 4 10deg	L202	63	104	4	45	
8	Source 4 26deg	L159	26	103	9	105	
9	Selecon PC	L501	14	98	9	104	
10	Selecon PC	L501	16	109	4	48	
11	Source 4 10deg	L501	24	110	9	98	

Position: OP 3.8m Side Bar

Fixture #	Fixture	Colour	Channel	Circuit	Dimmer	Address	Notes
1	Selecon PC	L500	32	C28	3	31	
2	Selecon PC	L501	8	C27	3	32	
3	Selecon PC	L500	34	102	8	93	
4	Source 4 19deg	L202	64	101	8	94	TDR Gobo
5	Selecon PC	L500	36	108	5	55	
6	Par64 MFL	L714	92	38	7	75	
7	Par64 MFL	L052	94	39	7	78	
8	Par64 MFL	L237	96	37	8	85	
9	Par64 MFL	L500	98	40	8	86	

Position: PS Boom 1

Fixture #	Fixture	Colour	Channel	Circuit	Dimmer	Address	Notes
1	Source 4 19deg	L103	201	72	3	28	
2	Source 4 19deg	L712	211	77	6	69	
3	Selecon PC	L500	33	62	7	80	
4	Selecon PC	L501	19	90	5	58	

Position: PS Boom 2

Fixture #	Fixture	Colour	Channel	Circuit	Dimmer	Address	Notes
1	Source 4 19deg	L103	203	65	2	21	
2	Source 4 19deg	L712	213	66	3	29	
3	Source 4 26deg	L501	223	60	3	30	

Position: PS Boom 6

Fixture #	Fixture	Colour	Channel	Circuit	Dimmer	Address	Notes
1	Source 4 10deg	L363	208	53	2	17	
2	Source 4 10deg	L108	218	54	2	16	
3	Source 4 19deg	L501	228	48	1	6	

Position: OP Boom 1

Fixture #	Fixture	Colour	Channel	Circuit	Dimmer	Address	Notes
1	Source 4 19deg	L103	202	99	9	106	
2	Source 4 19deg	L712	212	100	8	92	

Position: OP Boom 2

Fixture #	Fixture	Colour	Channel	Circuit	Dimmer	Address	Notes
1	Source 4 19deg	L103	204	93	8	88	
2	Source 4 19deg	L712	214	94	4	46	
3	Source 4 26deg	L501	224	106	8	96	

Position: OP Boom 3

Fixture #	Fixture	Colour	Channel	Circuit	Dimmer	Address	Notes
1	Source 4 19deg	L103	205	105	8	95	
2	Selecon PC	L789	215	51	3	35	
3	Source 4 26deg	L501	225	54	3	34	

Position: OP Boom 4

Fixture #	Fixture	Colour	Channel	Circuit	Dimmer	Address	Notes
1	Source 4 19deg	L103	206	112	9	101	
2	Source 4 26deg	L712	216	53	3	36	
3	Source 4 26deg	L501	226	50	3	33	

Position: OP Boom 5

Fixture #	Fixture	Colour	Channel	Circuit	Dimmer	Address	Notes
1	Source 4 19deg	L103	207	11	9	99	
2	Source 4 19deg	L501	217	62	4	44	TDR Gobo

Position: OP Boom 6

Fixture #	Fixture	Colour	Channel	Circuit	Dimmer	Address	Notes
1	Source 4 19deg	L501	209	118	6	5	Recipe
2	Source 4 19deg	L500	219	117	6	60	Recipe

Position: FLOOR LX

Fixture #	Fixture	Colour	Channel	Circuit	Dimmer	Address	Notes
1	Par16 Birdie	L287	112	42	6	64	Fire Pit
2	Par16 Birdie	L158	111	35	4	41	Fire Pit
3	Par16 Birdie	L022	110	36	4	66	Fire Pit
4	Par16 Birdie	L507	112	42	6	64	Fire Pit
5	Par16 Birdie	L164	111	35	4	41	Fire Pit
6	Pat16 Birdie	L019	110	36	4	66	Fire Pit
7	LED Strip Horizontal	RGB	118-120	Hot Power	RC4	111-113	Wardrobe light
8	LED Strip Vertical	RGB	118-120	Hot Power	RC4	111-113	Wardrobe light
9	Bedside Lamp	O/W	112	48	1	6	
10	Bedside Lamp	O/W	113	47	5	49	
11	LED tube	CW 5K	114	52	2	16	Bathroom light
12	Hazer		510	Hot Power	-	300-301	

Position: BACKSTAGE BLUES

Fixture #	Fixture	Colour	Channel	Circuit	Dimmer	Address	Notes
1	Par16 Birdie	L716	600	41	5	50	
2	Par16 Birdie	L716	600	41	5	50	
3	Par16 Birdie	L716	600	41	5	50	
4	Par16 Birdie	L716	600	41	5	50	

Fixture No.	Fixture	Colour
Bar Above Bio Box		
1	Par64 MFL	L202 O/W
2	Parnel	L203
3	Parnel	L203
4	Parnel	L203
LX 3		
1	Source 4 10deg	L154
2 (1)	Parnel	O/W
3	Selecon PC	L501
4 (2)	Parnel	O/W
5 (3)	Source 4 19deg Source 4 10deg	L501
6 (4)	Parnel	O/W
LX 4		
1	Source 4 26deg	L103
2	Source 4 19deg	L501
3	Source 4 19deg	L134
4	Source 4 10deg	L501
5 (1)	Source 4 19deg	L134 L501
6 (2)	Selecon PC	L501
LX 5		
1	Selecon PC Parnel	O/W
2	Source 4 26deg	L501
LX 7		
1	Selecon PC Parnel	O/W
LX 9		
1	Selecon PC Parnel	O/W
2	Robe Robin 300	
3	Robe Robin 300	
4	Robe Robin 300	
LX 11		
1	Robe Robin 300	
2	Robe Robin 300	
3	Robe Robin 300	
4	Source 4 26deg Source 4 19deg	L200 L147

Fixture No.	Fixture	Colour
LX A		
1	Source 4 19deg	L501
(2)	Selecon PC	L501
2 (3)	Selecon PC	L708 L501
3 (4)	Source 4 19deg	L501
4	Source 4 19deg	L501
5	Source 4 26deg	L501 L202
LX B		
1	Selecon PC	L147
LX C		
1	Source 4 19deg	L202
LX D		
1	Selecon PC	L147
LX E		
1	Source 4 10deg	O/W
2	Source 4 26deg	L202
LX F		
1	Selecon PC	L147
LX G		
1	Source 4 10deg	L202
2	Source 4 26deg	L202
LX I		
1	Source 4 19deg	L501
2	Source 4 19deg	L501
(2)	Selecon PC	L501
3	Selecon PC	L708 L501
4	Source 4 19deg	L501
5	Source 4 19deg	L501
6	Source 4 10deg	L202
(4)	Source 4 26deg	L501
7 (5)	Source 4 19deg	L501
8 (6)	Source 4 10deg	L202

	All New Fixtures	Legend
	De-rig	
	Change - Richard III	
	Change - CW19	

Fixture No.	Fixture	Colour
PS 5.8m Bar		
1	Par64 MFL	L202
2	Par64 MFL	L202
3 (1)	Source 4 26deg	L501
4 (2)	Robe Robin 300	
5	Par64 MFL	L202
6 (3)	Source 4 26deg	L501
(4)	Source 4 19deg	L159
7	Source 4 26deg	L501
8 (5)	Selecon PC	L501
9	Source 4 26deg	L501
10	Selecon PC	L501
11	Selecon PC	L501
12 (6)	Selecon PC	O/W
		L501

Fixture No.	Fixture	Colour
PS 3.8m Bar		
1	Selecon PC	L501
		L500
2	Source 4 19deg	L202
	Selecon PC	L501
3	Selecon PC	L501
(4)	Selecon PC	L500
4	Source 4 19deg	L202
5	Source 4 19deg	L203
6 (5)	Par64 MFL	L500
7 (6)	Par64 MFL	L500
8 (7)	Par64 MFL	L500
9 (8)	Par64 MFL	L500

Fixture No.	Fixture	Colour
OP 5.8m Bar		
1	Par64 MFL	L202
2	Par64 MFL	L202
(1)	Source 4 10deg	
3 (2)	Source 4 26deg	L501
4 (3)	Robe Robin 300	
5	Par64 MFL	L202
6 (4)	Source 4 26deg	L501
(5)	Source 4 10deg	L202
(6)	Source 4 26deg	L159
7 (7)	Selecon PC	L501
8 (8)	Selecon PC	L501
9	Source 4 26deg	L501
10	Selecon PC	L501
11 (9)	Selecon PC	L501

Fixture No.	Fixture	Colour
OP 3.8m Bar		
1	Selecon PC	L501
		L500
(2)	Selecon PC	L501
2 (3)	Selecon PC	L501
		L500
3 (4)	Source 4 19deg	L180
		L202
4 (5)	Source 4 19deg	L203
	Selecon PC	L500
5 (6)	Par64 MFL	L500
6 (7)	Par64 MFL	L500
7 (8)	Par64 MFL	L500
8 (9)	Par64 MFL	L500
		L202

	All New Fixtures	Legend
	De-rig	
	Change - Richard III	
	Change - CW19	

Fixture No.	Fixture	Colour
PS Boom 1		
(1)	Source 4 19deg	L103
1 (2)	Source 4 19deg	L202
		L712
PS Boom 2		
(1)	Source 4 19deg	L103
(2)	Source 4 19deg	L712
1 (3)	Source 4 26deg	L202
		L103
PS Boom 3		
1	Source 4 19deg	L202
PS Boom 4		
1	Source 4 26deg	L709
PS Boom 6		
1	Source 4 10deg	
2	Source 4 10deg	
3	Source 4 19deg	L501
4	Source 4 26deg	L202

Fixture No.	Fixture	Colour
OP Boom 1		
1	Source 4 19deg	L202
		L103
2	Source 4 19deg	L202
		L712
OP Boom 2		
(1)	Source 4 19deg	L103
1 (2)	Source 4 19deg	L202
		L712
(3)	Source 4 26deg	L103
OP Boom 3		
(1)	Source 4 19deg	L103
(2)	Selecon PC	L789
1 (3)	Source 4 26deg	L202
		L103
OP Boom 4		
(1)	Source 4 19deg	L103
1 (2)	Source 4 26deg	L709
		L712
OP Boom 5		
(1)	Source 4 19deg	L103
1 (2)	Source 4 19deg	L202
OP Boom 6		
1	Source 4 19deg	L501
2	Source 4 26deg	L501

	All New Fixtures	Legend
	De-rig	
	Change - Richard III	
	Change - CW19	

Position: Bar Above Bio Box

Fixture #	Fixture	Colour	Channel	Circuit	Dimmer	Address	Focus Notes	Notes
1	Par64 MFL	O/W	503	81	9	107	DSPS corner	House Light
2	Parnel	L203	80	-	-	-	Front stage wash	Unpatched – emergency face light
3	Parnel	L203	81	82	9	108	Front stage wash	Emergency face light
4	Par16 Birdie		505	87	2	24	CS	Spotting light
5	Parnel	L203	82	88	9	97	Front stage wash	Emergency face light

Position: LX-3

Fixture #	Fixture	Colour	Channel	Circuit	Dimmer	Address	Focus Notes	Notes
1	Parnel	O/W	502	C11	1	2	Over seating bank	House light
2	Parnel	O/W	502	C7	1	3	Over seating bank	House light
3	Source 4 10deg	L501	51	C6	2	13	DSC special	MBP Special
4	Parnel	O/W	502	29	1	8	Over seating bank	House light

Position: LX-4

Fixture #	Fixture	Colour	Channel	Circuit	Dimmer	Address	Focus Notes	Notes
1	Source 4 10deg	O/W	46	C3	4	40	Chair DSC (Area 2/3/4). Shutter to sides of chair, above head and below feet	
2	Source 4 19deg	L501	2	23	4	43	Area 1, Shutter to edge of rostra	
3	Selecon PC	L501	9	C1	2	14	Centre between Area 2/3/4.	Barndoors

Position: LX-5

Fixture #	Fixture	Colour	Channel	Circuit	Dimmer	Address	Focus Notes	Notes
1	Parnel	O/W	501	C23	2	19	Straight down, audience entrance corridor	House light
2	Source 4 26deg	L501	15	C22	2	20	Centre on Area 8, cut to edges and walls	

Position: LX-7

Fixture #	Fixture	Colour	Channel	Circuit	Dimmer	Address	Focus Notes	Notes
1	Parnel	O/W	501	C35	1	11	Straight down, audience entrance corridor	House lights

Position: LX-9

Fixture #	Fixture	Colour	Channel	Circuit	Dimmer	Address	Focus Notes	Notes
1	Parnel	O/W	501	C59	7	76	Straight down, audience entrance corridor	House light
2	Robe Robin 300		103	C58	Hot Power	366-386		
3	Robe Robin 300		104	C56	Hot Power	408-428		
4	Robe Robin 300		105	C52	Hot Power	450-470		

Position: LX-11

Fixture #	Fixture	Colour	Channel	Circuit	Dimmer	Address	Focus Notes	Notes
1	Robe Robin 300		106	C64	Hot Power	345-365		
2	Robe Robin 300		107	3	Hot Power	387-407		
3	Robe Robin 300		108	C70	Hot Power	429-449		
4	Source 4 19deg	L147	42	C61	7	79	Centered on 2x actors sitting against front of the rostra US edge of Area 11	

Position: LX-A

Fixture #	Fixture	Colour	Channel	Circuit	Dimmer	Address	Focus Notes	Notes
1	Source 4 19deg	L501	20	C13	3	25	Area 10, cut to edges of section	
2	Source 4 19deg	L501	12	C26	1	9	Area 6, cut to wall and edges of section	
3	Source 4 26deg	L202	65	C49	7	73		TDR Gobo

COLLAB WORKS

2019

Collab Works 19
Instrument Schedule
 The Loft – QUT Kelvin Grove
 Version 2.0

Position: LX-B

Fixture #	Fixture	Colour	Channel	Circuit	Dimmer	Address	Focus Notes	Notes
1	Selecon PC	L147	39	C14	3	26	OP wash	

Position: LX-C

Fixture #	Fixture	Colour	Channel	Circuit	Dimmer	Address	Focus Notes	Notes
1	Source 4 19deg	L202	62	C15	1	1		TDR Gobo

Position: LX-D

Fixture #	Fixture	Colour	Channel	Circuit	Dimmer	Address	Focus Notes	Notes
1	Selecon PC	L147	38	C17	3	27	CS wash	

Position: LX-E

Fixture #	Fixture	Colour	Channel	Circuit	Dimmer	Address	Focus Notes	Notes
1	Source 4 10deg	O/W	44	C31	1	10	Tight focus on urn sitting on cabinet PS	Recipe special, Iris
2	Source 4 19deg	L202	67	4	5	52		TDR Gobo (medium breaker)

Position: LX-F

Fixture #	Fixture	Colour	Channel	Circuit	Dimmer	Address	Focus Notes	Notes
1	Selecon PC	L147	37	C20	1	4	PS wash	

Position: LX-G

Fixture #	Fixture	Colour	Channel	Circuit	Dimmer	Address	Focus Notes	Notes
1	Source 4 10deg	L202	61	C21	1	7		TDR special
2	Source 4 26deg	L202	66	C1	4	37		TDR Gobo (medium breaker)

Position: LX-I

Fixture #	Fixture	Colour	Channel	Circuit	Dimmer	Address	Focus Notes	Notes
1	Source 4 19deg	L501	7	78	8	91	Centre on Area 4, shutter to front and PS edge of Rostra	
2	Source 4 26deg	L501	5	C36	1	12	Centre on Area 3, shutter from other sections	
3	Source 4 26deg	L501	17	C47	7	74	Area 9, cut off walls	
4	Source 4 19deg	L501	27	C60	7	77	DS section of area 7	
5	Source 4 10deg	L202	41	C72	7	82	DSOP between walls	Recipe Gobo (window)

Position: PS 5.8m Side Bar

Fixture #	Fixture	Colour	Channel	Circuit	Dimmer	Address	Focus Notes	Notes
1	Selecon PC	L501	13	73	6	70	OP side of Area 7, cut to US wall and DS edge	
2	Selecon PC	L501	3	74	6	67	Centre on Area 2. Cut to edge of stage. Cut from other sections	Barndoors
3	Source 4 26deg	L501	21	70	9	102	Area 11, cut to edges of section	
4	Robe Robin 300		101	64	Hot Power	471-491		
5	Source 4 26deg	L501	11	69	8	89	Area 6 cut to wall and edges of section	
6	Source 4 19deg	L159	25	63	6	68	DS Area 2	
7	Source 4 10deg	L501	23	75	7	81	1m behind back wall OP of centre. Shutter off walls	

Position: PS 3.8m Side Bar

Fixture #	Fixture	Colour	Channel	Circuit	Dimmer	Address	Focus Notes	Notes
1	Selecon PC	L500	31	67	5	56	High side light, cut off floor	
2	Selecon PC	L501	1	71	8	90	Area 1, Cut to edge of the stage	Barndoors
3	Par64 MFL	L714	91	44	7	83	Fabric	
4	Par64 MFL	L052	93	43	7	84	Fabric	
5	Par64 MFL	L237	95	42	8	22	Fabric	
6	Par64 MFL	L500	97	41	9	23	Fabric	

Position: OP 5.8m Side Bar

Fixture #	Fixture	Colour	Channel	Circuit	Dimmer	Address	Focus Notes	Notes
1	Source 4 10deg	L154	45	89	4	47	PS side of coffee table (area 3/4)	
2	Selecon PC	L501	4	61	5	59	Centre on Area 2. Cut to edge of the stage. Cut from other sections	Barndoors
3	Source 4 26deg	L501	22	91	9	100	Area 11, cut to edge of section	
4	Robe Robin 300		102	92	Hot Power	492-512		
5	Selecon PC	L501	6	95	5	57	Centre on Area 3, cut from other sections	Barndoors
6	Source 4 26deg	L501	10	97	9	103	Area 5, cut to edge of rostra	
7	Source 4 10deg	L202	63	104	4	45		
8	Source 4 26deg	L159	26	103	9	105	DS Area 2	
9	Selecon PC	L501	14	98	9	104	Cut top and bottom to wall and edge of area	
10	Selecon PC	L501	16	109	4	48	Cut off front and back	
11	Source 4 10deg	L501	24	110	9	98	1m behind back wall OP centre. Shutter off wall	

Position: OP 3.8m Side Bar

Fixture #	Fixture	Colour	Channel	Circuit	Dimmer	Address	Focus Notes	Notes
1	Selecon PC	L500	32	C28	3	31	High side light. Cut off floor	
2	Selecon PC	L501	8	C27	3	32	Centre on Area 4, cut to front and PS edge of Rostra	Barndoors
3	Selecon PC	L500	34	102	8	93	High side light. Cut off floor	
4	Source 4 19deg	L202	64	101	8	94	Bed special	TDR Gobo
5	Selecon PC	L500	36	108	5	55	High side light. Cut off floor	
6	Par64 MFL	L714	92	38	7	75	Fabric	
7	Par64 MFL	L052	94	39	7	78	Fabric	
8	Par64 MFL	L237	96	37	8	85	Fabric	
9	Par64 MFL	L500	98	40	8	86	Fabric	

Position: PS Boom 1

Fixture #	Fixture	Colour	Channel	Circuit	Dimmer	Address	Focus Notes	Notes
1	Source 4 19deg	L103	201	72	3	28	Shuttered to a square, off boom pole and floor	
2	Source 4 19deg	L712	211	77	6	69	Shuttered to a square, off boom pole and floor	
3	Selecon PC	L500	33	62	7	80	Shuttered off set wall	
4	Selecon PC	L501	19	90	5	58	Cut to setting line	

Position: PS Boom 2

Fixture #	Fixture	Colour	Channel	Circuit	Dimmer	Address	Focus Notes	Notes
1	Source 4 19deg	L103	203	65	2	21	Shuttered to a square, off boom pole and floor	
2	Source 4 19deg	L712	213	66	3	29	Shuttered to a square, off boom pole and floor	
3	Source 4 26deg	L501	223	60	3	30	Shuttered to a square, off boom pole and floor	

Position: PS Boom 6

Fixture #	Fixture	Colour	Channel	Circuit	Dimmer	Address	Focus Notes	Notes
1	Source 4 10deg	L363	208	53	2	17		
2	Source 4 10deg	L108	218	54	2	16	Fabric	
3	Source 4 19deg	L501	228	48	1	6		

Position: OP Boom 1

Fixture #	Fixture	Colour	Channel	Circuit	Dimmer	Address	Focus Notes	Notes
1	Source 4 19deg	L103	202	99	9	106	Shuttered to a square, off boom pole and floor	
2	Source 4 19deg	L712	212	100	8	92	Shutter off PS Boom 1 pole	

Position: OP Boom 2

Fixture #	Fixture	Colour	Channel	Circuit	Dimmer	Address	Focus Notes	Notes
1	Source 4 19deg	L103	204	93	8	88	Shuttered off venue wall	
2	Source 4 19deg	L712	214	94	4	46	Shuttered to a square, off boom pole and floor	
3	Source 4 26deg	L501	224	106	8	96	Shutter off PS Boom 1 pole. Shutter off speaker	

Position: OP Boom 3

Fixture #	Fixture	Colour	Channel	Circuit	Dimmer	Address	Focus Notes	Notes
1	Source 4 19deg	L103	205	105	8	95	Shuttered off stage	
2	Selecon PC	L789	215	51	3	35	Cut to shape of hole in set wall	
3	Source 4 26deg	L501	225	54	3	34	Shuttered off stage	

COLLAB WORKS

2019

Collab Works 19
Instrument Schedule
 The Loft – QUT Kelvin Grove
 Version 2.0

Position: OP Boom 4

Fixture #	Fixture	Colour	Channel	Circuit	Dimmer	Address	Focus Notes	Notes
1	Source 4 19deg	L103	206	112	9	101	Shuttered off stage	
2	Source 4 26deg	L712	216	53	3	36	Shuttered off stage	
3	Source 4 26deg	L501	226	50	3	33	Shuttered to set wall	

Position: OP Boom 5

Fixture #	Fixture	Colour	Channel	Circuit	Dimmer	Address	Focus Notes	Notes
1	Source 4 19deg	L103	207	11	9	99	Shuttered off stage	
2	Source 4 19deg	L501	217	62	4	44	Shuttered off stage	TDR Gobo

Position: OP Boom 6

Fixture #	Fixture	Colour	Channel	Circuit	Dimmer	Address	Focus Notes	Notes
1	Source 4 19deg	L501	209	118	6	5	Area 9 back light. Shutter to bathroom walls	Recipe
2	Source 4 19deg	L500	219	117	6	60		Recipe

Position: FLOOR LX

Fixture #	Fixture	Colour	Channel	Circuit	Dimmer	Address	Focus Notes	Notes
1	Par16 Birdie	L287	112	42	6	64		Fire Pit
2	Par16 Birdie	L158	111	35	4	41		Fire Pit
3	Par16 Birdie	L022	110	36	4	66		Fire Pit
4	Par16 Birdie	L507	112	42	6	64		Fire Pit
5	Par16 Birdie	L164	111	35	4	41		Fire Pit
6	Par16 Birdie	L019	110	36	4	66		Fire Pit
7	LED Strip Horizontal	RGB	118-120	Hot Power	RC4	111-113		Wardrobe light
8	LED Strip Vertical	RGB	118-120	Hot Power	RC4	111-113		Wardrobe light
9	Bedside Lamp	O/W	112	48	1	6		
10	Bedside Lamp	O/W	113	47	5	49		
11	LED tube	CW 5K	114	52	2	16		Bathroom light
12	Hazer		510	Hot Power	-	300-301		

Position: BACKSTAGE BLUES

Fixture #	Fixture	Colour	Channel	Circuit	Dimmer	Address	Focus Notes	Notes
1	Par16 Birdie	L716	600	41	5	50		
2	Par16 Birdie	L716	600	41	5	50		
3	Par16 Birdie	L716	600	41	5	50		
4	Par16 Birdie	L716	600	41	5	50		

COLLAB WORKS

2019

Collab Works 19
 Lighting Returns List
 The Loft – QUT Kelvin Grove
 Version 1.5

Item	Quantity	Pick Up Date	Pick Up Location	Return Date	Return Location
Gobos	8	09/05/19	Gardens Theatre	11/06/19	Gardens Theatre
Par16 Birdies	4	13/05/19	Gardens Theatre	11/06/19	Gardens Theatre
Smoke Factory – Tour Haze II	1	20/05/19	QUT KG Z9 ELC	10/06/19	QUT KG Z9 ELC
Par16 Birdies	2	23/05/19	Gardens Theatre	11/06/19	Gardens Theatre
5-tail Wieland	2	23/05/19	Gardens Theatre	10/06/19	Gardens Theatre
12v transformers	2	31/05/19	Tom Edmiston	11/06/19	Gardens Theatre
12v bulbs	2	31/05/19	Tom Edmiston	11/06/19	Gardens Theatre
RC4 (wireless DMX)	1	31/05/19	Tom Edmiston	11/06/19	Gardens Theatre

Fixture	Quantity
Profiles	
Source 4 10deg	8
Source 4 19deg	23
Source 4 26deg	16
PCs	
Parnel	9
Selecon PC	22
Par Cans	
Par16	9
Par64	9
Intelligent Lights	
Robe Robin 300	8
Set Electrics	
Bedside Lamps	2
LED fluoro tube	1
RGB LED strip	2

Fixture	Gel	Quantity
Profiles		
Source 4 19deg Source 4 26deg	L103	7
	L147	1
	L159	2
	L202	6
	L501	26
	L712	4
Source 4 10deg	L108	1
	L154	1
	L202	3
	L363	1
	L501	2
PCs		
Parnel	L203	3
Selecon PC	L103	3
	L106	1
	L147	3
	L500	5
	L501	10
	L789	1
Par Cans		
Par16 MFL	L116	2
Par64 MFL	L052	2
	L142	2
	L202	1
	L237	2
	L500	2
	L714	2

Fixture	Frame Size
Source 4 10deg	30.48 x 30.48 cm
Source 4 19deg	15.875 x 15.875 cm
Source 4 26deg	15.875 x 15.875 cm
Parnel	19.05 x 19.05 cm
Selecon PC	18.6 x 19.0 cm
Par64 MFL	25.4 x 25.4 cm
Par16 Birdie	7.3025 x 7.3025 cm

RECIPE —→ MAMAS BOYS PROJECT

Gel Changes:

- ✓ L103 changed to **L501** on all booms 1-5 Fixture #1 – Source 4 19deg (Ch. 201, 202, 203, 204, 205, 206, 207)
- ✓ L789 changed to **L106** in OP Boom 3 Fixture #2 – Selecon PC (Ch. 215)
- ✓ Diffusion taken out of 8x Par64s on PS 3.8m Bar Fixtures #3, #4, #5, #6 (Ch. 91, 93, 95, 97) and OP 3.8m Bar Fixtures #6, #7, #8, #9 (Ch. 92, 94, 96, 98)
- ✓ L changed to **L** in 3rd Par64 on PS and OP 3.8m Bar (Ch. 95, 96)

Fixture Changes:

- ✓ **Strike** PS Boom 6 Fixtures #1 and #2 – Source 4 10deg (Ch. 208, 218)
- ✓ **Strike** OP Boom 6 Fixture #1 – Source 4 19deg (Ch. 209)
- ✓ **Strike** Floor LX Fixtures #1 and #6 – Par16 Birdies (Ch. 112)
- ✓ **Add** 3x Par16 Birdies as Backstage Blues (Ch. 600)
- ✓ **Replace** Fixture #4 on OP 3.8m Bar – Source 4 19deg (Ch. 64)
- ✓ **Replace** Par16 Birdie spotting light (Ch. 505)

MAMAS BOYS PROJECT —→ THE DARK ROOM

Gel Changes:

- ✓ L147 changed to **L102** on LXB, LXD, LXF, Fixture #1 – Selecon PC (Ch. 37, 38, 39)
- ✓ L501 changed to **L103** on all Booms 1-5 Fixture #1 – Source 4 19deg (Ch. 201, 202, 203, 204, 205, 206, 207)
- ✓ L106 changed to **L789** in OP Boom 3 Fixture #2 – Selecon PC (Ch. 215)

Fixture Changes:

- ✓ **Add** Fixture #1 on LX C – Source 4 26deg (Ch. 68) L501
- ✓ **Move** Fixture #2 on OP Boom 5 to above 3.8m Bar – Source 4 19deg (Ch. 217)

Set Electrics (in consultation with Set department):

- ✓ **Install** LED Fluoro tube on top of the medicine cabinet in the Bathroom
- ✓ **Install** LED strip lights on inside of wardrobe, along top and down centre of door side.
- ✓ **Install** GPOs next to bed side tables, for lamps
- ✓ **Switch** out bulbs in lamps with 9v bulbs



CW19: Recipe
HLX Show Plot
 The Loft – QUT Kelvin Grove
 Version 1.1

PRE-SHOW	
Action	Notes
Hour Call	
Power up:	
Turn on Dimmers	Wait for DT to be onsite. Switch 9x three phase power switches on back of dimmer cage wall to on
Turn on Movers	The power points next to the dimmer racks have cables running into them labelled Movers . Switch them on.
Turn on stair lights	Flip down the two switches labelled Aisle Stair Lights on the metal box on the left wall of the dimmer cage.
Lighting Desk	Check the LX Op has powered on and is on comms
Fix ups	Action any notes given in the previous show report
Lamp check:	
Ask LX Op to G-O on pre-show cues as you go	
Go to cue 0.5	Glow all lights at 20%. Check they are all working and that the gels are intact. Troubleshoot/fix any issues.
Boom Check	Individually bring up bottom fixtures on the booms at 100%. Check focus in consultation with boom focus notes and fix any issues as required.
15-minute Call	
Haze:	
Smoke Factory Tour Hazer II	
Clearance	Check with Duty Technician that venue is isolated
Check fluid	On the PS edge of the Hazer. Undo the Velcro on the bottle. Pull it out and make sure there is plenty of fluid in the bottle.
Turn on Hazer	Hot powered into USPS wall hatch, labelled Hazer
Check connection	Make sure yellow DMX light is glowing
Turn Hazer up	Ask LX Op to bring up Hazer sub to 70% until room is filled with haze and then bring down to 50%. Any issues view troubleshooting page on Hazer manual .
Beginners	
Final Checks:	
Black Out check (cue 0.6)	Bring all lights out. Check for light spill from dock. Fix any issues. Bring up Backstage Blues and check for light spill onto stage. Fix any issues.
Pre-show state	Ask LX Op to go into preshow state
Clearance	Hand space over to DSM
DURING SHOW	
Action	Notes
Stand by	Remain on comms and be ready to resolve any issues.



CW19: Recipe
HLX Show Plot
The Loft – QUT Kelvin Grove
Version 1.1

POST SHOW	
Action	Notes
Turn on Fluoro's	Wait for clearance. Turn on switch on PS, US of black flats
Power Down	
Hazer	Ensure LX Op has turned off Hazer at the desk. On the Hazer, press the option button until the LED screen says OFF and press enter . Wait until screen displays one dot, then turn power off at the wall and disconnect the cable.
Lights	Ensure LX Op has turned off all lights and powered down the desk. Turn off moving lights. Turn off dimmers.
Notes	Give any notes to PSM for show report



PRE-SHOW	
Action	Notes
Hour Call	
Power up:	
Turn on Dimmers	Wait for DT to be onsite. Switch 9x three phase power switches on back of dimmer cage wall to on
Turn on Movers	The power points next to the dimmer racks have cables running into them labelled Movers . Switch them on.
Turn on stair lights	Flip down the two switches labelled Aisle Stair Lights on the metal box on the left wall of the dimmer cage.
Lighting Desk	Check the LX Op has powered on and is on comms
Fix ups	Action any notes given in the previous show report
Lamp check:	
Ask LX Op to G-O on pre-show cues as you go	
Go to cue 0.1	Glow all lights at 20%. Check they are all working and that the gels are intact. Troubleshoot/fix any issues.
Boom Check	Individually bring up bottom fixtures on the booms at 100%. Check focus in consultation with boom focus notes and fix any issues as required.
15-minute Call	
Haze:	
Smoke Factory Tour Hazer II	
Clearance	Check with Duty Technician that venue is isolated
Check fluid	On the PS edge of the Hazer. Undo the Velcro on the bottle. Pull it out and make sure there is plenty of fluid in the bottle.
Turn on Hazer	Hot powered into USPS wall hatch, labelled Hazer
Check connection	Make sure yellow DMX light is glowing
Turn Hazer up	Ask LX Op to bring up Hazer sub to 70% until room is filled with haze and then bring down to 50%. Any issues view troubleshooting page on Hazer manual .
Beginners	
Final Checks:	
Black Out check (cue 0.1 Vis, cue 0.3 LX)	Bring all lights out. Check for light spill from dock. Fix any issues. Bring up Backstage Blues and check for light spill onto stage. Fix any issues.
Pre-show state	Ask LX Op to go into preshow state
Clearance	Hand space over to DSM
DURING SHOW	
Action	Notes
Stand by	Remain on comms and be ready to resolve any issues.



POST SHOW	
Action	Notes
Turn on Fluoro's	Wait for clearance. Turn on switch on PS, US of black flats
Power Down	
Hazer	Ensure LX Op has turned off Hazer at the desk. On the Hazer, press the option button until the LED screen says OFF and press enter . Wait until screen displays one dot, then turn power off at the wall and disconnect the cable.
Lights	Ensure LX Op has turned off all lights and powered down the desk. Turn off moving lights. Turn off dimmers.
Notes	Give any notes to PSM for show report



PRESHOW	
Action	Notes
Hour Call	
Power up:	
Turn on Dimmers	Wait for DT to be onsite. Switch 9x three phase power switches on back of dimmer cage wall to on
Turn on Movers	The power points next to the dimmer racks have cables running into them labelled Movers . Switch them on.
Turn on Stair lights	Flip down the two switches labelled Aisle Stair Lights on the metal box on the left wall of the dimmer cage.
Lighting desk	Check the LX Op has powered on and is on comms
Set Electrics:	
Bathroom Light	Turn on light by flipping the switch on the tube to I .
Bedside Lamps	Turn on switches at the wall and make sure the lamps are plugged in.
LED strip	Turn on Hot Power switch in USOP Hatch labelled RC4 (receiver). Turn on Hot Power switch in PSUS Hatch labelled RC4 (transmitter).
Fix ups	Action any notes given in the previous show report
Lamp check:	
Go to cue ??	Ask LX Op to G-O on pre-show cues as you go Glow all lights at 20%/ Check they are all working and that the gels are intact. Troubleshoot/fix any issues.
Boom Check	Individually bring up bottom fixtures on the booms at 100%. Check focus in consultation with boom focus notes and fix any issues as required.
Beginners	
Final Checks:	
Black Out check (cue 0.1 Vis, cue 0.2 LX)	Bring all lights out. Check for light spill from dock. Fix any issues. Bring up Backstage Blues (Ch. 600) and check for light spill onto stage. Fix any issues
Pre-show state	Ask LX Op to go into preshow state
Clearance	Hand space over to DSM
DURING SHOW	
Action	Notes
Stand by	Remain on comms and be ready to resolve any issues.



CW19: The Dark Room
Show Plot
The Loft – QUT Kelvin Grove
Version 2.0

POST SHOW

Action	Notes
Turn on Fluoro's	Wait for clearance. Turn on switch on PS, US of black flats
Power Down:	
Set Electrics	Switch off bathroom light, bedside lamps and LED strip as per power on.
Lights	Ensure LX Op has turned off all lights and powered down the desk. Turn off moving lights. Turn off dimmers.
Notes	Give any notes to PSM for show report

FOG SMOKE FACTORY & HAZE

FOG AND HAZE GENERATORS

7. Trouble-Shooting

The Tour Hazer II does not produce any haze

- Check the external control
- Check the power supply
- Check, if there is enough fluid in the canister
- Check if the connection is permeable
- Check if fluid tube is unclean



The Tour Hazer II hazes uncontrolledly

- Check the external control
- Check the humidity (High humidity can cause uncontrolled hazing)
- Sinterfilter in the canister clogged?



The Tour Hazer II deactivates itself

The over temperature protection device is activated. Remove external heat sources, to maintain air supply. The device will reactivate as soon as the normal operating temperature is reached.



Loud humming noise during hazing

- The pump runs dry. Avoid generating fog without fluid. Refill fluid!
- Check fluid tube, disconnect and reconnect.
- Fluid tube bent down or defect?



Error report E-4 on the display

- The machine is getting too hot. The heating switches off and the machine cools down.
- Solution: Disconnect the machine from the mains supply for a moment and then re-connect it.



Error report E-8 on the display

- The heating element is clogged
- Please return the Tour Hazer II for maintenance.



If the Hazer does not produce any haze:

- Check fluid level
- Check if yellow DMX light is on next to LED panel
- Check connection points for air gaps
- Disconnect DMX and check if it works with Manual control
- Swap out cables one at a time, to check for faults
- Check the desk and the Hazer has the same DMX address (300)

Allow machine to power down before turning off to allow it to purge

Any other issues, please consult [full manual](#)