

MaineHealth

MaineHealth Knowledge Connection

Costas T. Lambrew Research Retreat 2021

Costas T. Lambrew Research Retreat

2021

An Evaluation of the Rollout of Aunt Bertha, a Community-Centered Directory, Across the MaineHealth Network

Samantha Dinsdale
Maine Medical Center

Lisbeth Wierda
Maine Medical Center

Kerri Barton
Maine Medical Center

Ellen Freedman
Maine Medical Center

Follow this and additional works at: <https://knowledgeconnection.mainehealth.org/lambrew-retreat-2021>



Part of the [Health Information Technology Commons](#)

Recommended Citation

Dinsdale, Samantha; Wierda, Lisbeth; Barton, Kerri; and Freedman, Ellen, "An Evaluation of the Rollout of Aunt Bertha, a Community-Centered Directory, Across the MaineHealth Network" (2021). *Costas T. Lambrew Research Retreat 2021*. 5.

<https://knowledgeconnection.mainehealth.org/lambrew-retreat-2021/5>

This Book is brought to you for free and open access by the Costas T. Lambrew Research Retreat at MaineHealth Knowledge Connection. It has been accepted for inclusion in Costas T. Lambrew Research Retreat 2021 by an authorized administrator of MaineHealth Knowledge Connection.

An evaluation of the rollout of Aunt Bertha, a community-centered directory, across the MaineHealth network

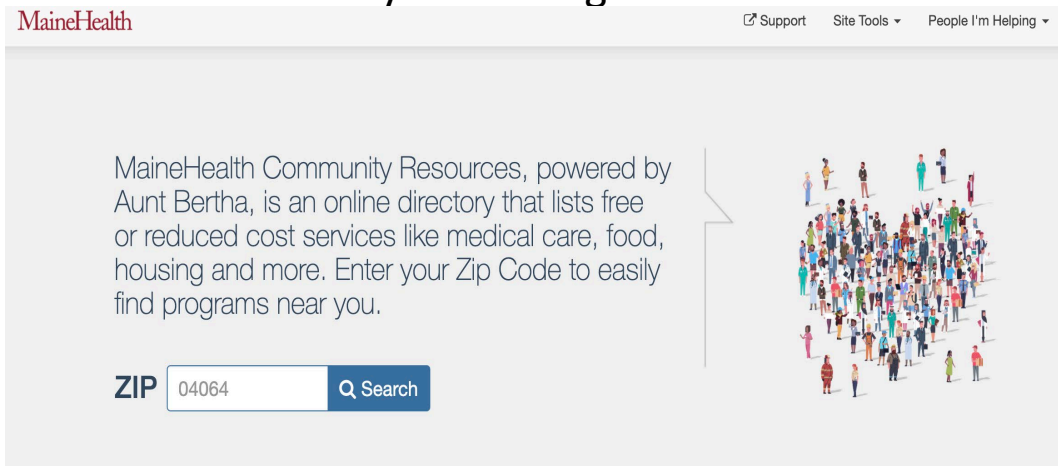


Samantha Dinsdale^{1,2} | Lisbeth Wierda,¹ MPH | Kerri Barton,¹ MPH | Ellen Freedman,³ MPH

1. Maine Medical Center Research Institute, Center for Outcomes Research and Evaluation, Portland, Maine
2. University of New England, College of Graduate and Professional Studies, Portland, Maine
3. MaineHealth, Center for Health Improvement, Portland, Maine

Aunt Bertha

- Aunt Bertha is a community-resource directory MaineHealth adopted in January 2020.
- The platform covers federal, state, and local free or reduced-cost services offered to community members in Maine.
- The directory is categorized by social determinants of health needs.
 - It provides programs and services offered by community-based organizations.



Project Analysis

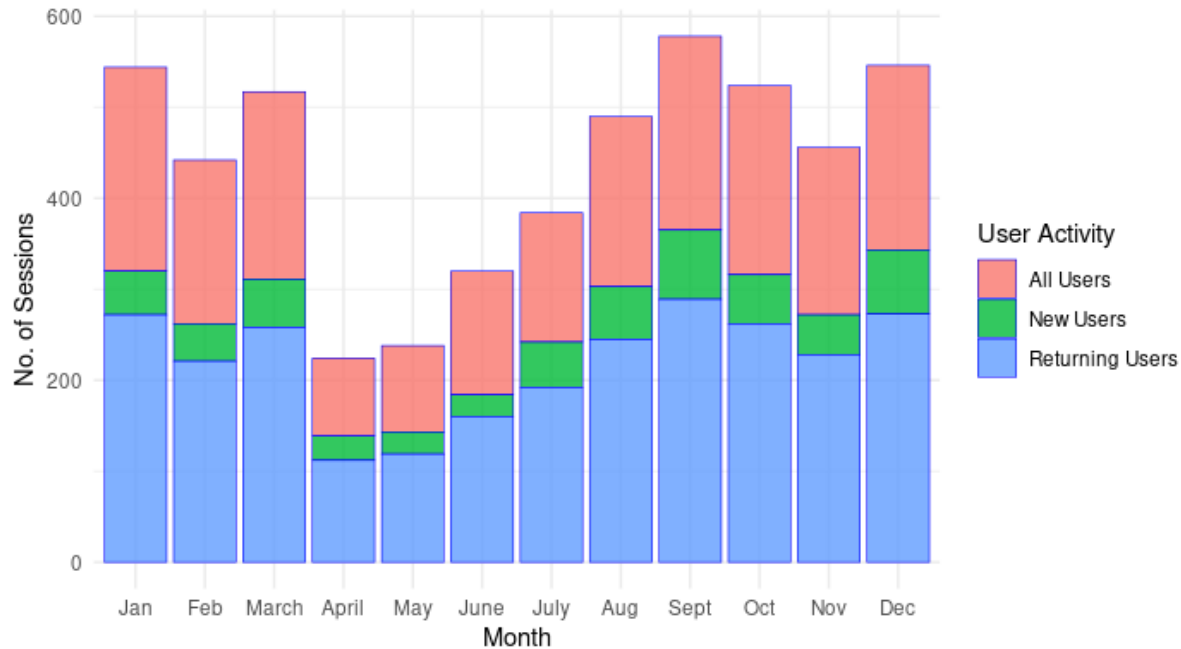
Quantitative and qualitative data analysis was conducted.

- Quantitative: Using the program R, site analytics were exported from the Aunt Bertha platform.
 - Programs added, claimed, and user activity were analyzed across several Maine counties.
- Qualitative: Remote interviews were conducted with community-based organizations across Maine to gain insight to their perspective of Aunt Bertha's use and potential.

QUANTITATIVE DATA

Oxford County's User Activity

Monthly User Sessions on Aunt Bertha in 2020:
Oxford County



QUALITATIVE DATA

Opinions of Aunt Bertha



Barriers to Aunt Bertha

