

2022-02-01

## Detecting Patches on Road Pavement Images acquired with 3D Laser Sensors using Object Detection and Deep Learning

Syed Ibrahim Hassan  
*Technological University Dublin*

Dympna O'Sullivan  
*Technological University Dublin, dympna.osullivan@tudublin.ie*

Susan McKeever  
*Technological University Dublin, susan.mckeever@tudublin.ie*

*See next page for additional authors*

Follow this and additional works at: <https://arrow.tudublin.ie/scschcomart>



Part of the [Computer Sciences Commons](#)

---

### Recommended Citation

Ibrahim Syed Hassan, Susan McKeever, Dympna O'Sullivan, David Power, Ray McGowan, Kieran Feighan. Detecting Patches on Road Pavement Images acquired with 3D Laser Sensors using Object Detection and Deep Learning. Proceedings of VISAPP, International Conference on Image Processing and Vision Engineering, online, February 2022, DOI: 10.21427/T5MM-F347

This Article is brought to you for free and open access by the School of Computer Sciences at ARROW@TU Dublin. It has been accepted for inclusion in Articles by an authorized administrator of ARROW@TU Dublin. For more information, please contact [arrow.admin@tudublin.ie](mailto:arrow.admin@tudublin.ie), [aisling.coyne@tudublin.ie](mailto:aisling.coyne@tudublin.ie), [gerard.connolly@tudublin.ie](mailto:gerard.connolly@tudublin.ie).



This work is licensed under a [Creative Commons Attribution-NonCommercial-Share Alike 4.0 License](#)

---

**Authors**

Syed Ibrahim Hassan, Dympna O'Sullivan, Susan McKeever, Kieran Feighan, David Power, and Ray McGowan

# Pavement Patch Detection using Synchronized Range and Intensity Images Captured by 3D Laser Profiling Sensors

Syed Ibrahim Hassan<sup>1</sup><sup>a</sup>, Dympna O’Sullivan<sup>1</sup><sup>b</sup>, Susan Mckeever<sup>1</sup><sup>c</sup>, Kieran Feighan<sup>2</sup>, David Power<sup>2</sup> and Ray McGowan<sup>2</sup>

<sup>1</sup>*Department of Computer Science, Technological University, Dublin, Ireland*

<sup>2</sup>*Pavement Management Services Ltd. Ireland*

*ibrahim.h.syed@mytudublin.ie, dympna.osullivan@tudublin.ie, susan.mckeever@tudublin.ie*

**Keywords:** Object Detection, Pavement Inspection, LCMS, Deep Learning.


**Abstract:** Regular pavement inspections are key to good road maintenance and road defect corrections. Advanced pavement inspection systems such as LCMS (Laser Crack Measurement System) can automatically detect the presence of different defects using 3D lasers. However, such systems still require manual involvement to complete the detection of pavement defects. This paper proposes an automatic patch detection system using object detection technique. To our knowledge, this is the first time state-of-the-art object detection models Faster RCNN, and SSD MobileNet-V2 have been used to detect patches inside images acquired by LCMS. Results show that the object detection model can successfully detect patches inside LCMS images and suggest that the proposed approach could be integrated into the existing pavement inspection systems. The contribution of this paper are (1) an automatic pavement patch detection models for LCMS images and (2) comparative analysis of RCNN, and SSD MobileNet-V2 models for automatic patch detection.


## 1 INTRODUCTION


Transport and road infrastructure departments usually perform regular inspection of pavements to record aspects of the surface condition such as potholes, cracking and rutting. These inspections are used to make decisions about pavement maintenance planning, including cost considerations (Koch and Brilakis, 2011). Pavement inspection can be achieved in two ways, either manually or automatically. Current pavement inspection techniques typically consist of three main steps: 1) data collection, 2) defect identification, and 3) defect assessment. The first step is largely automatic using specially adapted vehicles; however, the other two steps are usually manual. Manual pavement inspection relies on structural engineers or certified inspectors who assess pavement surface conditions based on the images acquired through pavement assessment vehicles such as RSP (Road Surface Profiler). Based on engineers’ recommendations, government authorities can decide which roads to maintain, what maintenance treatments to apply,

and when to apply them. Manual inspection is time-consuming and incurs high labour costs, putting pressure on limited resources for pavement inspection.

One way of capturing pavement condition data is through the use of advanced pavement inspection systems such as LCMS (Laser Crack Measurement System) developed by Pavemetrics (Laurent et al., 2012). Pavemetrics is a leading company that develop sensors and software for pavement data collection vehicles. LCMS is composed of two high-performance 3D lasers profilers on the back of a vehicle (figure 2), which simultaneously acquire "Range" (height of each pixel) and "Intensity" (the intensity of the reflected light for each pixel) images of the scanned surface. Range images display different types of cracks and expansion joints. Additionally, range images also exhibit potholes, patches and micro-texture. Intensity data finds road markings, sealed cracks, and lane lines. The data acquired by LCMS is then processed using algorithms developed to automatically extract distress data, including different types of defects such as transverse, longitudinal, alligator, potholes, etc. Patches are a common pavement defect. Patches are used to provide a permanent restoration of the stability and quality of the pavement, for example after installing, replacing, or repairing underground utili-

<sup>a</sup> <https://orcid.org/0000-0002-0480-989X>

<sup>b</sup> <https://orcid.org/0000-0003-2841-9738>

<sup>c</sup> <https://orcid.org/0000-0003-1766-2441>

ties. Improperly installed patches and deterioration of the surrounding pavement, combined with challenging weather, can reduce the life of a patch and turn patches into defects.

The shape of pavement patches is different from other defects such as potholes or cracks, and the color of patches is close to the intact pavement. Thus, LCMS still faces challenges in detecting pavement patches and often requires manual involvement whereby engineers manually label/draw bounding boxes around each patch.

In this study, we aim to address the patch detection problem by answering the following research question. “To what extent can object detection methods accurately detect patches on images acquired using LCMS?” To the best of our knowledge, this is the first time object detection models has been used to detect pavement patches on images acquired using LCMS (Laser Crack Measurement System). The dataset used in this study was acquired from Pavement Management System (PMS) Ltd. PMS is a civil engineering consultancy firm in Ireland, specializing in testing, evaluation, and management of roads, airports, and ports.

## 2 RELATED WORK

Automatic pavement defect detection has attracted the interest of many researchers and several studies propose various approaches to improve the current manual visual inspection of pavements. 3D laser profiling technology (Zhang et al., 2018) (Tsai and Chatterjee, 2018) is widely used in the assessment of pavement surfaces which includes highways and airport runways (Laurent et al., 2012) (Mulry et al., 2015). 3D laser profiling technology such as LCMS provides detailed information about pavement defects and automatically detects pavement defects, including cracks, raveling, rutting, roughness, etc. The detection of pavement patches using LCMS requires manual involvement and has not been significantly addressed. Nevertheless, some researchers propose different approaches to automatically detect and localize pavement patches, but they use images or videos acquired through conventional imaging devices such as digital or smartphone cameras. However these common imaging devices are not commonly used in the professional pavement inspection process. Therefore, it is necessary to build an automatic patch detection system that can integrate into the existing professional visual inspection systems. For example, (AA and Kumar, ) propose an automatic patch detection using an active contour segmentation technique. The proposed

method consists of three main steps; 1) image pre-processing, 2) detection of patches using active contour segmentation, and 3) video tracking. In the first step, the image is passed through multiple filters for image enhancement and to remove unnecessary objects; in the second step, patches from the intact pavement are segmented using active contouring. Moreover, to trace the patch in subsequent video frames, the detected patches are passed to the kernel tracker to avoid detection and report the patch only once. The proposed method achieved an overall 82.75% precision and 92.31% recall. (Hadjidemetriou et al., 2018) propose a method for classifying patch and non-patch images using Support Vector Machines (SVM). The authors recorded road surface video frames using a smartphone camera mounted inside and outside on a vehicle. The method trains the SVM classifier to distinguish patch and non-patch areas inside images. The proposed classification system was evaluated on video frames and achieved a detection accuracy of 87.3% and 82.5%, respectively.

Other techniques used in the automatic pavement inspection process are based on the object detection approach (Hassan et al., 2021). The goal of object detection is to detect and localize pavement defects, such as potholes, patches and cracks by drawing a bounding box around the above defects. For example, (Maeda et al., 2018) propose a multiple pavement defect detection and localization system. The author collected 9053 images using a smartphone camera mounted on a vehicle windscreen. The proposed defect detection system was trained with a state-of-the-art object localization model with eight pavement defects and achieves overall precision and recall 75% using SSD MobileNet (Liu et al., 2016) and Inception V2 (Szegedy et al., 2016).

Using 3D laser profiling data, different methods have been proposed for automatic pavement defect detection. For example, (Zhang et al., 2018) propose an automatic pavement defect detection method by utilizing 3D laser scanned pavement data. The proposed approach was developed to detect pavement cracks and pavement deformation defects. Their results show that using 3D laser scanning data, pavement defects can be effectively detected with an overall detection accuracy of 98%. (Mathavan et al., 2014) proposed a method for automatic detection and quantification of pavement raveling using synchronized intensity and range images. The author adopted image processing techniques to segment the pavement surface from painted areas like road markings. The overall results show that the proposed method can differentiate and quantify pavement areas that may consist of raveling. In attempt to detect potholes using

3D pavement data, (Tsai and Chatterjee, 2018) proposed an automatic pothole detection using 3D range data by applying a watershed segmentation method (Roerdink and Meijster, 2000), the proposed method achieved 94.79% detection accuracy, 90.80% precision and 98.75% recall.

The cited research on pavement defect detection utilizes object localizing and image processing techniques to detect different types of pavement defects. However, the detection of pavement patches has not been significantly addressed especially on images that acquired using LCMS technology. The current LCMS system can automatically detect patches but still face challenges where it cannot draw a bounding box around the detected patch. Inspired by the object localization technique, we propose an object detection approach in the pavement patch detection domain that can further automate patch detection process using LCMS.

The following sections discusses the proposed approach, experimental implementation, results, discussion, and conclusion

### 3 METHODOLOGY

This paper proposes a method for automatically detecting the presence and location of pavement patches in images acquired using LCMS. We consider this problem as an object detection task because we aim to detect and localize each patch by drawing a bounding box around the patch. Using a supervised machine learning technique, we have trained two state-of-the-art object detection models - Faster RCNN (Ren et al., 2016) and SSD MobileNet V2 (Sandler et al., 2018), and compare the detection results of both models across range and intensity images. This section will describe the complete process of the automatic pavement patch detection approach including a description of the dataset and implementation details of the object detection models.

#### 3.1 Dataset

This research utilizes asphalt pavement images acquired by LCMS (Laser Crack Measurement System). LCMS takes images of pavements with high-speed, high-resolution transverse profiles. LCMS surveys at speeds around 80 km/h, allowing a transverse profile to be captured every 4 mm. LCMS provide two image outputs; a sample of both images is shown in figure 2. The right image (ImageRng) is a range image - a visual representation of the height data collected from the lasers. The left image (ImageInt) is an in-

tensity image - a visual representation of the intensity data collected from the lasers. Intensity data detects lane markings and sealed cracks, whereas range data detects other features such as cracks. The two images are greyscaled, and the size of each image is 1040x1250. The dataset contains 2,242 positive samples of each image type, i.e. range and intensity images. Each image was labeled by a certified engineer at PMS by drawing bounding box around patches in each image. In this paper, 70% of the data was used to train the model, and the remaining 30% was used to evaluate model performance. Since the group of images are identical, stratification of the dataset was not required. Table 1 shows the details of the dataset, and Table 2 shows the breakdown of the testing set. Each image contains more than one patch; therefore, the total number of patches equates to the number of ground truth boxes inside the entire testing set.



Figure 1: Pavement assessment van with LCMS mounted on the backside.

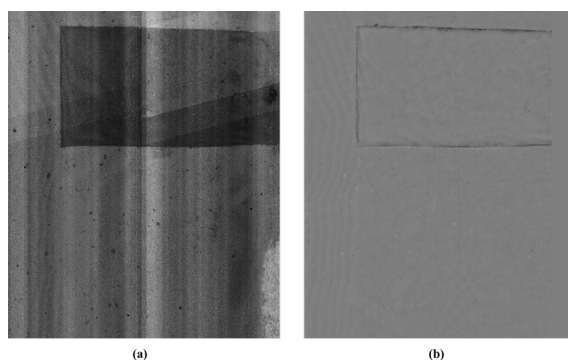


Figure 2: (a) Intensity image (b) Corresponding Grayscale Range image.

Table 1: Details of the entire training and testing set

Image Type	Total Images	Training Set	Testing Set
LCMS Range	2,242	1636	603
LCMS Intensity	2,242	1636	601

Table 2: Breakdown of the testing set

Image Type	Total # of images	Total # of patches in testing set
LCMS Range	603	856
LCMS Intensity	601	853

### 3.2 Network Architecture

Two network architecture was utilized in this study to get comparative result sets with the specified dataset. The network architectures used were SSD (Single Shot Detector) with the MobileNet-V2 backbone and Faster RCNN (Region-based CNN) with Inception-V2 backbone. The choice of networks was motivated by the fact that they achieved good results on different benchmark datasets such as Microsoft Common Object Context (MS COCO) (Lin et al., 2014) and PASCAL VOC (Everingham et al., 2010). Furthermore, it offers a structure that can be modified according to specific task needs. Additionally, these architectures have been used in the automatic pavement inspection domain such as detection of road markings (Alzraiee et al., 2021), potholes (Kumar et al., 2020) and other pavement distress detection (Arman et al., 2020)

#### 3.2.1 Faster RCNN

Faster R-CNN has two stages for detection. In the first stage, images are processed using a feature extractor (e.g., VGG, Inception-V2) called the Region Proposal Network (RPN), and simultaneously, intermediate level layers (e.g., "conv5") are used to predict class bounding box proposals. In the second stage, these box proposals are used to crop features from the same intermediate feature map, which are subsequently input to the remainder of the feature extractor to predict a class label and its bounding box modification for each proposal. Furthermore, Inception-V2 architecture is used as a backbone of the Faster RCNN model. Inception architecture has yielded better results than a conventional CNN architecture. Additionally, the Faster R-CNN model combined with Inception CNN architecture shows an improvement in detection accuracy.

#### 3.2.2 SSD MobileNet-V2

The SSD (Single Shot MultiBox Detector) is a fast detection model based on a single deep neural network. It was released in 2017 as an efficient CNN architecture designed for mobile and embedded vision applications. This architecture uses proven depth-wise separable convolutions to build lightweight deep

neural networks that can be used in embedded devices for real-time object detection tasks. However, SSD network's drawback is that its performance is directly proportional to object sizes, meaning that it does not perform well on object categories with small sizes compared to other approaches such as the Faster RCNN.

In our experiments, model training and testing are done using Python and the Tensorflow object detection API. For training, an NVIDIA GeForce RTX 2070 GPU was used. All experiments are performed under Windows 10 on Intel Core i7-9750 with 16GB of DDR4 RAM.

## 4 EXPERIMENTAL RESULTS

In this section, we address the following research question. How accurately can object detection methods detect patches on images acquired using LCMS? The metrics used to answer this question are the Precision and Recall using IoU (Intersection over Union).

### 4.1 Evaluation of Designed Solution

Several researchers have proposed different evaluation methods for the object detection task (Padilla et al., 2020) (Zhao et al., 2019). This paper uses precision and recall using the Intersection over Union (IoU), also known as the Jaccard index, to evaluate the trained models. This evaluation method was preferred over standard object detection metrics that measure the performance at a global level, usually based on Average Precision (AP). However, the standard metrics do not provide enough insights regarding how good the detection was in each image, which is critical if we deploy a system in the real world. A more granular evaluation help us answer questions such as "Does the model perform significantly better on range and intensity images?", "How many patches are automatically detected versus how many actual patches have been identified by certified engineers?" To get these insights, first we need to compute the confusion matrix using the actual ground truth boxes and predicted boxes. Confusion matrix can be calculated by defining the IoU and confidence threshold. IoU will measure the overlap between the actual ground truth box and the predicted bounding box, and the confidence score helps to draw the predicted bounding box according to a pre-defined threshold. For example, if we define the IoU threshold of 0.5, it means that if the overlap between an actual and predicted bounding box is  $<0.5$ , the model will consider it as false positive whereas, if the overlap between actual and pre-

dicted bounding box is  $>0.5$ , the model will consider it as true positive. In this way we can compute the confusion matrix. Once the confusion matrix is computed, we can use it to calculate precision and recall. Figure 3 illustrates examples of IoU and confidence score.

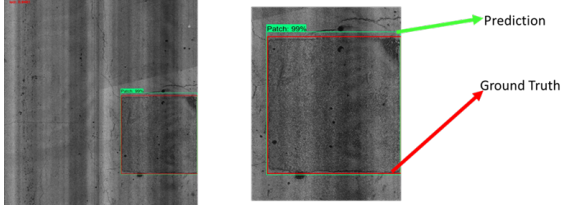


Figure 3: Example of Intersection over Union (IoU).

$$Precision = \frac{TP}{TP + FP} \quad (1)$$

Where  $TP+FP$  is the total number of ROI generated from the model.

$$Recall = \frac{TP}{TP + FN} \quad (2)$$

Where  $FN$  is the total number of ground truth boxes.

As a first step, the optimal value of IoU needs to be identified. This was done by calculating precision and recall at different IoU thresholds to check whether the different IoU threshold impacts the detection performance. Figures 4 illustrate the results achieved by the Faster RCNN model at different IoU thresholds using a 0.6 confidence score.

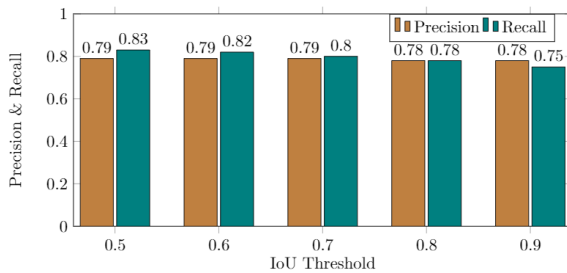


Figure 4: Comparison of Precision and Recall at different IoU threshold values using Range Images.

The analysis found that the detection performance is considerably better using 0.5 IoU with a 0.6 confidence score. Hence, these values were used across all subsequent experiments. Also, it is worth noting that if we keep the IoU threshold high, the model will consider a patch as a false negative. Furthermore, for the task of patch detection, a higher IoU threshold is not required, as the exact placement of the patch relative to the predicted area only needs to be enough to

say that a patch exists in the area. The task does not require precise patch perimeter discovery.

## 4.2 Experiment 1 (Patch Detection using Range Images)

The purpose of this experiment was to analyze the performance of object detection models on the range images. Faster RCNN and SSD MobileNet V2 were trained and tested with range images. Table 3 shows the detection performance of both models. Compared to the SSD, Faster RCNN detects more patches, as shown by the higher recall rate. However, Faster RCNN generates more false positives. In contrast, SSD has a lower recall rate and higher precision, which means SSD detects less patches by drawing fewer incorrect boxes but missing the actual patches.

Table 3: Detection performance on Range images

Model	Backbone	Precision@0.5IoU	Recall@0.5IoU
Faster RCNN	Inception-V2	0.79	0.83
SSD	MobileNet-V2	0.87	0.70

## 4.3 Experiment 2 (Patch Detection using Intensity Images)

This experiment aims to determine the performance of the same models on intensity images; the same models were retrained with intensity images. Table 4 shows the detection performance of two models across intensity images. Compared to experiment 1, the results on intensity images are lower because intensity images contain much noise, and patches are not so visible when compared to range images. Figure 5 shows the visual results of intensity and range images. As shown in the figure some patches were detected in range images that not identified in intensity images and vice versa.

Table 4: Detection performance on Intensity images

Model	Backbone	Precision@0.5IoU	Recall@0.5IoU
Faster RCNN	Inception-V2	0.67	0.74
SSD	MobileNet-V2	0.84	0.39

## 4.4 Combined Model

Having examined the performance of patch detection using each of the range and intensity images separately, we see that range images show better patch detection performance. However, given that we have two image types for each area of road, it is worth investigating whether intensity images can be useful where the range model fails and vica versa. In other



Table 5: Comparative analysis on Range and Intensity images

Model	# patches detected in Range images but not in equivalent Intensity images	# patches detected in Intensity images but not in equivalent Range images
Faster RCNN	142	46
SSD MobileNet-V2	292	31

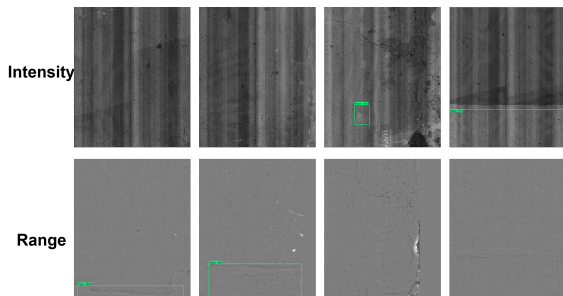


Figure 5: Visual analysis of Range and Intensity images.

words, can a combined model approach provide better patch detection results than each of the two separate range and intensity models? In order to answer this question we analysed the underlying image level results for Tables 3 and 4 to examine the following (1) the number of patches detected by Faster RCNN and SSD on range images, that are not detected on intensity images and (2) the number of patches detected by Faster RCNN and SSD on intensity images, that are not detected on range images. Table 5 shows the results of this analysis, indicating the number of patches detected by one model but not the other: 188 for the Faster RCNN and 323 for SSD MobileNet. For the combined model, we take the output patch prediction per image from each of range and intensity models. If *either* or *both* of the models identify a patch, we count that patch as a detection. This leads to a higher true positive rate as more patches are found using results from both models, as indicated by Table 5. The counter-side is that we also raise the false positive rate, as false positives in either model are counted. We recomputed precision and recall and the prediction accuracy of the combined model is shown in Table 6. Using the combined model approach, recall increases, but precision has decreased. The combined model identifies more patches overall including more false positives. The choice of optimal model - range or combined - depends on the priorities of the pavement assessment task at hand. If the cost of missing a patch is significant, more false positives may be tolerated. This decision of accuracy over precision may be made by the task owner.

Table 6: Detection performance on Combined Model

Model	Backbone	Precision	Recall
Faster RCNN	Inception-V2	0.6%	0.88%
SSD	MobileNet-V2	0.79%	0.7%

## 5 CONCLUSION

This paper proposes an automatic patch detection system for intensity and range images captured using LCMS. We trained two object detection models with intensity and range images. The current findings show that models using range images can provide better patch detection than those with intensity images with 0.79% precision and recall 0.83%. Using range images, both models can detect more patches compare to intensity images. While Faster RCNN can detect complex patches compared to SSD, it has a high false-positive rate on both image types. Whereas SSD detects fewer patches than the Faster RCNN with fewer false positives. Additionally, we analysed that by combining patch detection from both range and image to create a combined model, we can boost detection rates. Specifically, the combined model decreases precision but increases recall by identifying more patches overall but by increasing false positives. According to domain experts at PMS, this trade off needs to be considered in the context of the requirements of the patch detection task. False positives can be tolerated in exchange for higher recall, towards their aim of detecting as many of the actual patches as possible. In future work, we suggest that these results can be further improved through: the application of image pre-processing techniques; further tuning of model hyperparameters; creating a new feature extraction network for better results. Further investigation is required to understand the characteristics of patches with the domain experts. Additionally, the automatic patch detection system will be compared with manually rated patch conditions to check the robustness of automatic pavement assessment systems.

## ACKNOWLEDGEMENTS

This work was funded by Science Foundation Ireland through the SFI Centre for Research Training in Machine Learning (18/CRT/6183).



## REFERENCES

- AA, A. and Kumar, A. Efficient road patch detection based on active contour segmentation.
- Alzraiee, H., Leal Ruiz, A., and Sprotte, R. (2021). Detecting of pavement marking defects using faster r-cnn. *Journal of Performance of Constructed Facilities*, 35(4):04021035.
- Arman, M. S., Hasan, M. M., Sadia, F., Shakir, A. K., Sarker, K., and Himu, F. A. (2020). Detection and classification of road damage using r-cnn and faster r-cnn: a deep learning approach. In *International Conference on Cyber Security and Computer Science*, pages 730–741. Springer.
- Everingham, M., Van Gool, L., Williams, C. K., Winn, J., and Zisserman, A. (2010). The pascal visual object classes (voc) challenge. *International journal of computer vision*, 88(2):303–338.
- Hadjidemetriou, G. M., Vela, P. A., and Christodoulou, S. E. (2018). Automated pavement patch detection and quantification using support vector machines. *Journal of Computing in Civil Engineering*, 32(1):04017073.
- Hassan, S. I., O’Sullivan, D., and McKeever, S. (2021). Pothole detection under diverse conditions using object detection models. In *IMPROVE*, pages 128–136.
- Koch, C. and Brilakis, I. (2011). Pothole detection in asphalt pavement images. *Advanced Engineering Informatics*, 25(3):507–515.
- Kumar, A., Kalita, D. J., Singh, V. P., et al. (2020). A modern pothole detection technique using deep learning. In *2nd International Conference on Data, Engineering and Applications (IDEA)*, pages 1–5. IEEE.
- Laurent, J., Hébert, J. F., Lefebvre, D., and Savard, Y. (2012). Using 3d laser profiling sensors for the automated measurement of road surface conditions. In *7th RILEM international conference on cracking in pavements*, pages 157–167. Springer.
- Lin, T.-Y., Maire, M., Belongie, S., Hays, J., Perona, P., Ramanan, D., Dollár, P., and Zitnick, C. L. (2014). Microsoft coco: Common objects in context. In *European conference on computer vision*, pages 740–755. Springer.
- Liu, W., Anguelov, D., Erhan, D., Szegedy, C., Reed, S., Fu, C.-Y., and Berg, A. C. (2016). Ssd: Single shot multibox detector. In *European conference on computer vision*, pages 21–37. Springer.
- Maeda, H., Sekimoto, Y., Seto, T., Kashiya, T., and Omata, H. (2018). Road damage detection using deep neural networks with images captured through a smartphone. *arXiv preprint arXiv:1801.09454*.
- Mathavan, S., Rahman, M., Stonecliffe-Jones, M., and Kamal, K. (2014). Pavement raveling detection and measurement from synchronized intensity and range images. *Transportation Research Record*, 2457(1):3–11.
- Mulry, B., Jordan, M., O’Brien, D., et al. (2015). Automated pavement condition assessment using laser crack measurement system (lcms) on airfield pavements in ireland. In *9th International Conference on Managing Pavement Assets*.
- Padilla, R., Netto, S. L., and da Silva, E. A. (2020). A survey on performance metrics for object-detection algorithms. In *2020 International Conference on Systems, Signals and Image Processing (IWSSIP)*, pages 237–242. IEEE.
- Ren, S., He, K., Girshick, R., and Sun, J. (2016). Faster r-cnn: towards real-time object detection with region proposal networks. *IEEE transactions on pattern analysis and machine intelligence*, 39(6):1137–1149.
- Roerdink, J. B. and Meijster, A. (2000). The watershed transform: Definitions, algorithms and parallelization strategies. *Fundamenta informaticae*, 41(1, 2):187–228.
- Sandler, M., Howard, A., Zhu, M., Zhmoginov, A., and Chen, L.-C. (2018). Mobilenetv2: Inverted residuals and linear bottlenecks. In *Proceedings of the IEEE conference on computer vision and pattern recognition*, pages 4510–4520.
- Szegedy, C., Vanhoucke, V., Ioffe, S., Shlens, J., and Wojna, Z. (2016). Rethinking the inception architecture for computer vision. In *Proceedings of the IEEE conference on computer vision and pattern recognition*, pages 2818–2826.
- Tsai, Y.-C. and Chatterjee, A. (2018). Pothole detection and classification using 3d technology and watershed method. *Journal of Computing in Civil Engineering*, 32(2):04017078.
- Zhang, D., Zou, Q., Lin, H., Xu, X., He, L., Gui, R., and Li, Q. (2018). Automatic pavement defect detection using 3d laser profiling technology. *Automation in Construction*, 96:350–365.
- Zhao, Z.-Q., Zheng, P., Xu, S.-t., and Wu, X. (2019). Object detection with deep learning: A review. *IEEE transactions on neural networks and learning systems*, 30(11):3212–3232.