



Broad band flux-density monitoring of radio sources with the Onsala twin telescopes

Downloaded from: <https://research.chalmers.se>, 2022-10-11 19:47 UTC

Citation for the original published paper (version of record):

Varenius, E., Maio, F., le Bail, K. et al (2022). Broad band flux-density monitoring of radio sources with the Onsala twin telescopes. *Experimental Astronomy*, In Press.

<http://dx.doi.org/10.1007/s10686-022-09867-4>

N.B. When citing this work, cite the original published paper.



Broad band flux-density monitoring of radio sources with the Onsala twin telescopes

Eskil Varenius¹ · Francesco Maio² · Karine Le Bail¹ · Rüdiger Haas¹

Received: 22 March 2022 / Accepted: 9 August 2022
© The Author(s) 2022

Abstract

The Onsala twin telescopes (OTT) are two 13 m telescopes located at the Onsala Space Observatory in Sweden. With dual linear polarized broad-band (3–14 GHz) receivers, they are part of the next generation Very Long Baseline Interferometry (VLBI) Global Observing System (VGOS) for geodesy and astrometry. In addition to purely geodetic data products, VGOS will regularly produce full-polarisation images of hundreds of radio sources. These rich monitoring data will be valuable for both astronomy and geodesy. In this pilot study we aimed at monitoring ten bright radio sources to search for flares or similar activity, and at testing the instrument calibration on long (months) and short (hours) time scales. Using the OTT as a standalone instrument, we observed and analysed 91 short (<30 min) sessions spanning seven months. We monitored seven potentially variable radio sources (0059+581, 0552+398, 1144+402, 1156+295, 1617+229, 3C418, OJ287) and three reference calibrators (3C147, 3C286, 3C295). We used the Common Astronomy Software Applications (CASA) package to fringe-fit, bandpass-correct and scale the data to obtain flux densities in the four standard VGOS bands: 3.0–3.5 GHz (band 1), 5.2–5.7 GHz (band 2), 6.3–6.8 GHz (band 3), and 10.2–10.7 GHz (band 4). We obtained simultaneous multi-frequency light curves for ten radio sources. A bright multi-frequency flare is observed in the radio source 0059+581. OJ287 and 1156+295 show significant long-term variability in their light curves. After correcting for instrumental biases, we determine the empirical flux density uncertainty as ~5 %.

Keywords Telescopes · Onsala twin telescopes – techniques · Interferometric – galaxies · Individual · OJ287 · 0059+581 · 0552+398 · 1144+402 · 3C418 · 1156+295 · 1617+229

✉ Eskil Varenius
eskil.varenius@chalmers.se

¹ Department of Space, Earth and Environment, Chalmers University of Technology, Onsala Space Observatory, 43992 Onsala, Sweden

² Enrico Fermi Department of Physics, University of Pisa, Largo Bruno Pontecorvo 3, 56127 Pisa, Italy

1 Introduction

VGOS is an international collaboration to provide highly accurate terrestrial and celestial reference frames, as well as highly accurate Earth orientation parameters (EOP), i.e. polar motion, universal time and celestial pole offsets. Several of the EOPs can only be determined with geodetic VLBI and are essential for the operation of satellite systems, including the widely used Global Navigation Satellite Systems such as GPS and Galileo. Geodetic VLBI, and thus VGOS, is therefore crucial for positioning and navigation applications. For further details about geodetic VLBI in general and VGOS in particular, we refer the reader to [16, 19, 22] and references therein.

VGOS aims to significantly improve the accuracy of geodetic data products, compared to traditional legacy (S/X-band) observations. This means new technical challenges and requirements, for example the need for continuous monitoring of telescope system temperatures, often referred to as T_{sys} , during observations. Continuous T_{sys} monitoring is required to provide up-to-date flux densities for optimal scheduling of VLBI observations [8], and to account for source structure effects in geodetic analysis [21, 25].

The Onsala twin telescopes, ONSA13NE (Oe) and ONSA13SW (Ow), separated by 75 m, are currently the only fully operational VGOS twin telescopes in the world [5]. They offer a unique setup to verify and explore the new broad-band VGOS capabilities in terms of hardware and software. In particular, the OTT are since spring 2021 able to monitor T_{sys} during observations [8]. This capability does, however, need to be verified by commissioning observations. While single-dish observations can offer some guidance, proper verification of the system performance require interferometric observations, as would be the case in full VGOS observing. This can be achieved by using the OTT as a single-baseline interferometer, where the output data streams are correlated to form complex visibilities which can then be appropriately calibrated to obtain flux densities of celestial sources. By comparing the results with known reference sources, the stability and accuracy of the telescope observing systems can be assessed. If done successfully, we also obtain (the first) simultaneously measured light curves of sources in the four VGOS bands.

In this paper, we report on the results of commissioning observations carried out with the OTT during 7 months in 2021. In Section 2 we describe the observations and the methods used to analyse the data. The results are presented in Section 3 and are discussed in Section 4. Finally, we present our conclusions in Section 5.

2 Observations and data analysis

We scheduled 102 short (< 30 min) experiments from May 2021 to December 2021 including between two and ten sources in each experiment. Two series of experiments were scheduled: the Flux Monitoring (FM) sessions spanning 7

months, and the Intra-Day Variability Monitoring (IDVM) sessions spanning 3 days. Eleven of the scheduled experiments failed in different ways and were excluded from our analysis. A list of the 91 experiments analysed in this work is presented in Table 1. Due to limited observing time and/or correlator time, not all sources were included in all observations. For cross-checking purposes, at least one absolute flux-density reference source was included in all experiments starting with FM2110. We note that initially the campaign was planned for the period May to August, but a few additional observations were made in December to verify the system performance after maintenance work (see Sections 2.3 and 2.4).

The OTT are equipped with DBBC3 backends [24], sampling the analog waveform and producing VLBI Data Interchange Format (VDIF) packets which we record on disk using `jive5ab`¹. We use the standard VGOS observing setup recording 8 Gbps per telescope. Each telescope recorded 32 intermediate frequencies of 32 MHz width (see Table 2), both polarizations using 2-bit sampling. In this work we label the perpendicular linear polarisation axes as horizontal (H) and vertical (V), referring to the polarisation basis with respect to the telescope receiver plane. This is similar to X and Y which are often used to denote linear polarisation axes in the celestial source reference system. While these can be momentarily the same, they are generally different due to feed rotation relative to the source. Accurate transformations between the (H,V) and (X,Y) require absolute polarisation angle calibration which is beyond the scope of this study.

2.1 Sample selection

We selected seven sources based on their properties in existing literature. Starting from the VGOS standard source catalog used in regular observations, we used the Bordeaux VLBI Image Database (BVID)² to identify sources with different brightness and variability, and the NRAO/VLA Sky Survey (NVSS)³ to identify sources with significant structure and/or other nearby companions. A summary of the properties for the selected sources are given in Table 3. We note that while the OTT baseline length of 75 m in theory can achieve a maximum synthesised resolution of about 3 arc minutes at 5 GHz, the actual projected baseline length may often be significantly shorter. The corresponding maximum field-of view for the 13 m single dish is about 20 arc minutes. *Structure* in Table 3 hence mean that we find significant structure on scales of 3 arc minutes or larger in the respective NVSS field image, and *Isolated* means that we find other bright sources within a 10 arc minute radius. We also note that while NVSS is a good match for the OTT angular scales, it is a significantly lower frequency (1.4 GHz) than the VGOS bands. The structure of our selected sources and nearby sources may hence differ at the VGOS bands. Similarly, the BVID flux densities include 8.4 GHz (X-band) measurements which does not overlap directly with the VGOS observing setup. Nevertheless, we selected

¹ <https://github.com/jive-vlbi/jive5ab>

² <http://bvid.astrophy.u-bordeaux.fr/database.html>

³ <https://www.cv.nrao.edu/nvss/postage.shtml>

Table 1 The 91 experiments analysed in this work

Exp. code	Start [MJD]	0059+581	0552+398	1144+402	1156+295	1617+229	3C418	OJ287	3C147	3C286	3C295
FM2102	59345.5212	X	X	X	X		X				
FM2103	59346.5532	X	X	X	X		X				
FM2104	59353.5532	X	X	X	X		X				
FM2105	59354.5532	X	X	X	X		X				
FM2106	59355.5532	X	X	X	X		X				
FM2107	59358.5532	X	X	X	X		X				
FM2108	59359.5532	X	X	X	X		X				
FM2109	59360.5532	X	X	X	X		X				
FM2110	59361.5579	X	X	X	X		X	X	X	X	X
FM2111	59365.5580	X	X	X	X		X	X	X	X	X
FM2112	59366.5580	X	X	X	X		X	X	X	X	X
FM2113	59367.5580	X	X	X	X		X	X	X	X	X
FM2115	59369.5580	X	X	X	X		X	X	X	X	X
FM2116	59372.5482	X	X	X	X		X	X	X	X	X
FM2117	59373.5483	X	X	X	X		X	X	X	X	X
FM2119	59376.5483	X	X	X	X		X	X	X	X	X
FM2120	59379.6757	X	X	X	X	X	X	X	X	X	X
FM2122	59381.4699	X	X	X	X		X	X	X	X	X
FM2123	59382.6793	X	X	X	X	X	X	X	X	X	X
FM2124	59383.5520	X	X	X	X		X	X	X	X	X
FM2125	59385.5103	X	X	X	X		X	X	X	X	X
FM2126	59386.6770	X	X	X	X		X	X	X	X	X
FM2127	59387.6376	X	X	X	X	X	X	X	X	X	X
FM2128	59388.6793	X	X	X	X	X	X	X	X	X	X

Table 1 (continued)

Exp. code	Start [MJD]	0059+581	0552+398	1144+402	1156+295	1617+229	3C418	OJ287	3C147	3C286	3C295
FM2129	59389.5961	X	X	X	X	X	X	X	X	X	X
FM2130	59393.6369	X	X	X	X	X	X	X	X	X	X
FM2131	59394.5538	X	X	X	X	X	X	X	X	X	X
FM2132	59395.5538	X	X	X	X	X	X	X	X	X	X
FM2133	59397.5538	X	X	X	X	X	X	X	X	X	X
IDVM01	59397.6340	X	X	X	X	X	X	X	X	X	X
IDVM02	59397.7174	X	X	X	X	X	X	X	X	X	X
IDVM03	59397.8007	X	X	X	X	X	X	X	X	X	X
IDVM04	59397.8840	X	X	X	X	X	X	X	X	X	X
IDVM05	59397.9673	X	X	X	X	X	X	X	X	X	X
IDVM06	59398.0463	X	X	X	X	X	X	X	X	X	X
IDVM07	59398.1273	X	X	X	X	X	X	X	X	X	X
IDVM08	59398.2107	X	X	X	X	X	X	X	X	X	X
IDVM09	59398.2942	X	X	X	X	X	X	X	X	X	X
IDVM10	59398.3817	X	X	X	X	X	X	X	X	X	X
IDVM11	59398.4673	X	X	X	X	X	X	X	X	X	X
FM2134	59398.5538	X	X	X	X	X	X	X	X	X	X
IDVM12	59398.6340	X	X	X	X	X	X	X	X	X	X
IDVM13	59398.7174	X	X	X	X	X	X	X	X	X	X
IDVM14	59398.8007	X	X	X	X	X	X	X	X	X	X
IDVM15	59398.8840	X	X	X	X	X	X	X	X	X	X
IDVM16	59398.9673	X	X	X	X	X	X	X	X	X	X
IDVM17	59399.0463	X	X	X	X	X	X	X	X	X	X
IDVM18	59399.1273	X	X	X	X	X	X	X	X	X	X

Table 1 (continued)

Exp. code	Start [MJD]	0059+581	0552+398	1144+402	1156+295	1617+229	3C418	OJ287	3C147	3C286	3C295
IDVM19	59399.2107	X									X
IDVM20	59399.2942	X									X
IDVM21	59399.3795	X			X						X
IDVM22	59399.4673	X			X					X	X
FM2135	59399.5538	X	X		X			X		X	X
IDVM23	59399.6340	X		X	X					X	X
IDVM24	59399.7174	X			X					X	X
IDVM25	59399.8007	X			X					X	X
IDVM26	59399.8840	X			X					X	X
IDVM27	59399.9673	X			X					X	X
IDVM28	59400.0463	X								X	X
IDVM29	59400.1273	X									X
IDVM30	59400.2107	X									X
IDVM31	59400.2942	X									X
IDVM32	59400.3795	X			X						X
IDVM33	59400.4673	X			X					X	X
FM2136	59400.5538	X	X		X					X	X
FM2137	59402.6161	X	X		X				X	X	X
FM2138	59403.5953	X	X		X				X	X	X
FM2140	59408.5543	X	X		X				X	X	X
FM2141	59409.5546	X	X		X				X	X	X
FM2142	59410.5546	X	X		X				X	X	X
FM2143	59411.5546	X	X		X				X	X	X
FM2144	59414.5546	X	X		X				X	X	X

Table 1 (continued)

Exp. code	Start [MJD]	0059+581	0552+398	1144+402	1156+295	1617+229	3C418	OJ287	3C147	3C286	3C295
FM2146	59416.5546	X	X	X	X	X	X	X	X	X	X
FM2147	59417.5546	X	X	X	X	X	X	X	X	X	X
FM2148	59421.5546	X	X	X	X	X	X	X	X	X	X
FM2151	59424.5538	X	X	X	X	X	X	X	X	X	X
FM2152	59428.5538	X	X	X	X	X	X	X	X	X	X
FM2153	59429.5538	X	X	X	X	X	X	X	X	X	X
FM2154	59430.5538	X	X	X	X	X	X	X	X	X	X
FM2155	59443.5538	X	X	X	X	X	X	X	X	X	X
FM2156	59445.5548	X	X	X	X	X	X	X	X	X	X
FM2157	59449.5549	X	X	X	X	X	X	X	X	X	X
FM2158	59457.3882	X	X	X	X	X	X	X	X	X	X
FM2159	59457.4299	X	X	X	X	X	X	X	X	X	X
FM2163	59548.3257	X	X	X	X	X	X	X	X	X	X
FM2164	59549.2841	X	X	X	X	X	X	X	X	X	X
FM2165	59550.2841	X	X	X	X	X	X	X	X	X	X
FM2166	59551.3257	X	X	X	X	X	X	X	X	X	X
FM2167	59554.2841	X	X	X	X	X	X	X	X	X	X
FM2168	59555.3049	X	X	X	X	X	X	X	X	X	X
FM2169	59557.3257	X	X	X	X	X	X	X	X	X	X

Table 2 The frequency setup used in standard VGOS observations. Each spectral window is 32 MHz wide and was observed in both horizontal and vertical polarization. Horizontal lines define the four VGOS bands (1) 3.0-3.5 GHz, (2) 5.2-5.7 GHz, (3) 6.3-6.8 GHz, and (4) 10.2-10.7 GHz. The spectral window (SPW) IDs and order is given as reported by CASA, which also corresponds to the SPW ID in the ASCII files with flux density measurements available in the supplementary material of this article

SPW	Center freq. [MHz]
0	3464.35
1	3432.35
2	3368.35
3	3304.35
4	3208.35
5	3080.35
6	3048.35
7	3016.35
8	5704.35
9	5672.35
10	5608.35
11	5544.35
12	5448.35
13	5320.35
14	5288.35
15	5256.35
16	6824.35
17	6792.35
18	6728.35
19	6664.35
20	6568.35
21	6440.35
22	6408.35
23	6376.35
24	10664.35
25	10632.35
26	10568.35
27	10504.35
28	10408.35
29	10280.35
30	10248.35
31	10216.35

Table 3 Summary of properties for the selected radio sources

Source	Brightness	Structure	Isolated	Variable
0552+398	Bright	Point	Yes	No
1144+402	Medium	Point	Yes	Yes
3C418	Bright	Extended	No	No
OJ287	Bright	Point	No	Yes
0059+581	Bright	Point	No	Yes
1156+295	Medium	Point	No	Yes
1617+229	Faint	Point	Yes	No

the seven sources based on these BVID and NVSS data as no corresponding VGOS-catalog exists.

2.2 Obtaining flux densities from raw telescope data

We used DiFX 2.6 [2, 3] to correlate the VDIF data and obtain complex visibilities, which were exported to FITSIDI-format using the DiFX tool *difx2fits*. Since the antennas share the same clock, and normally use a 5 MHz spaced pulse-calibration system for geodetic VLBI corrections, the pulse-cal tones correlate and produce strong interference in the visibility spectra. To allow sharp removal of these tones, and to account for any unknown significant instrumental effects, we correlated with high (0.1 MHz=320 channels per SPW) spectral resolution, and 1 second time resolution. Astronomical VLBI telescopes often distribute Tsys measurements in antab format⁴. To make use of existing software, we hence stored our Tsys measurements (and gain curve models) as antab files. The amplitude calibration information (Tsys+gain) was then appended to the FITSIDI using the CASA VLBI Tools developed by JIVE⁵.

We developed a calibration script in python to process all our data using CASA tools [14]. First, the data were imported to Measurement Set (MS) format using the CASA task *importfitsidi*. We used *accor* to normalise the visibility amplitudes using auto-correlations, *fringefit* to determine delay, rate and phase corrections (with 30 sec solution interval, one solution per SPW per polarisation), and *bandpass* to adjust for instrumental bandpass effects (using 3C295 or, if missing, instead OJ287). In addition to removing the predictable pulse-cal tones, the task *rflag* was used to mitigate other radio frequency interference (RFI), in particular in the lowest band 1. For the interested reader, the full python script used for the CASA processing (the same for all experiments) is available as online material attached to this paper.

After processing, the data were averaged to obtain, for each source, one flux density value per SPW and polarisation. All values obtained for all experiments are available as online material attached to this paper. An example is shown in Fig. 1. While there is generally good agreement between the measured values and values from the literature for the three flux density calibrators, a few particular aspects needed further attention.

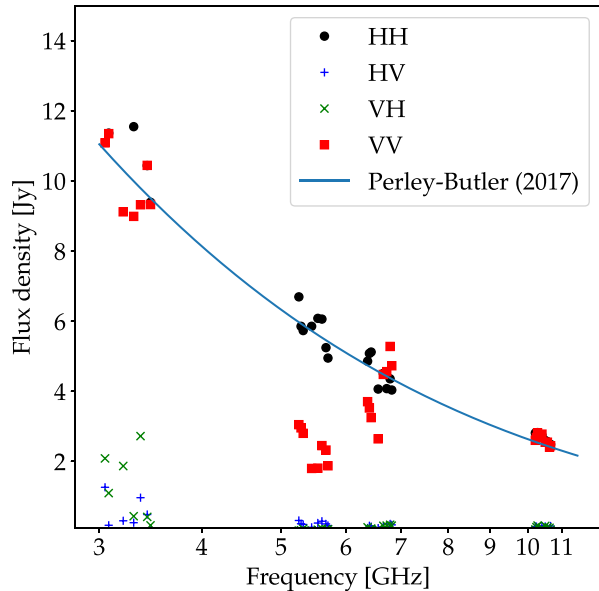
2.3 Empirical scaling factors

From first analysis it was clear that band 2 VV-polarisation amplitudes were consistently lower than expected, see Fig. 1. This was eventually determined to be due to a faulty down-conversion board in the Oe DBBC3. We therefore determined an empirical correction factor for band 2 by comparing our data with the [18] models for 3C147, 3C286 and 3C295. After repairing the board, in September 2021, the

⁴ <http://www.aips.nrao.edu/cgi-bin/ZXHLP2.PL?ANTAB>

⁵ <https://github.com/jive-vlbi/casa-vlbi>

Fig. 1 The measured full-polarisation spectrum, per spectral window, as obtained in experiment FM2142 for the absolute flux density reference source 3C295. The solid line shows the model from [18]. Some of the points in band 1 (3.0-3.5 GHz) are outside the scale of this plot, likely due to residual RFI. The non-zero cross-polarisation amplitudes (HV and VH) in band 1 is also likely (at least partially) due to RFI. A significant offset of the VV-flux densities in band 2 (5.2-5.7 GHz) is clear, and was significantly improved by repairing a faulty down-conversion board (see Section 2.3)



VV-level (from FM2160) improved significantly. The scaling factors applied to our band 2-data were 1.4 before the repair, and 1.1 after the repair.

To account for other apparent systematics we also scaled, again from comparing with the reference source models, band 3 by a factor 1.05 before FM2160 and band 4 by a factor 0.95 after FM2160.

These empirical scaling factors have been included in the figures presented in this paper, but not in the machine readable tables of flux density values available electronically. A side-by-side comparison of the data with/without the scaling factors applied can be seen in Fig. 2.

2.4 Noise diode power supply failures

In September 2021 the noise diode signals of both telescopes failed within a few weeks of each other. First gradually, with unstable levels and non-linear on/off behaviour, and then completely with no signal received. The problem was faulty power supplies used for sending the on/off signal from the control building to the telescopes, and nothing faulty with the actual noise sources themselves. After replacing the power supplies with new units, the noise reference level returned to its previously stable value. The last experiments, from FM2163, all behaved as expected.

2.5 Removing outliers and forming Stokes I

Despite using *rflag* in our CASA processing to mitigate RFI, there are still (broader) RFI signals affecting some SPWs in our data. This is most severe in the lowest band 1, but sometimes also affect higher frequencies. Either directly in the data, or

Table 4 Reduced χ^2 values for the three reference sources, using data from the FM-sessions shown in Fig. 2 and the models of [18]

Band	3C147	3C286	3C295
1	0.89	1.16	0.69
2	0.44	0.46	0.18
3	0.25	0.48	0.17
4	0.21	0.33	0.92

indirectly via the Tsys measurements. We also suspect there may be minor residual instrumental biases for some SPWs, which cause abnormally high or low values. To mitigate the impact of these outliers, we employed two filter conditions when averaging the HH and VV SPW flux densities together to provide one Stokes I value per VGOS band. Firstly, we excluded any SPWs where the cross-polarisation correlation amplitudes (HV or VH) were higher than 15 % of either HH or VV values. The exception was for 3C286, which is known to be linearly polarised at the 10 % level, where we empirically (with good results) put the cutoff at 30 % of HV or VH. Secondly, we calculated the median of the SPWs in each band and excluded values deviating more than a factor of 2 from the median value. This procedure turned out to provide robust results, at the expense of losing some data - in particular in band 1. This was most severe for the weakest source 1617+229 where no usable data were recovered for band 1. However, we decided this loss is acceptable.

2.6 Estimating uncertainties

Based on the empirical scatter in our time series for the reference sources, see Fig. 2, we adopt an empirical uncertainty of 5 % for all bands. With this, we obtain the reduced χ^2 values for our reference calibrator sources given in Table 4. For most bands, except 3C286 band 1 and 3C295 band 4 (which could potentially be explained by excess emission from other field sources), 5 % uncertainty appears too pessimistic. However, the antenna gain curves are only known with 5-10 % uncertainties, and hence residual direction-dependent gain errors could affect our data. Detailed modelling to account for these effects is beyond the scope of this work. For simplicity, we therefore adopt a 5 % uncertainty for all bands based on our reduced χ^2 analysis.

3 Results

After processing the data using the methods and corrections described in Section 2, we obtained one Stokes I flux density value per source per experiment. These values are shown in Figs. 2, 3 and 4 for the FM-experiments, and in Fig. 5 for the IDVM experiments. Machine-readable tables with all values used to make the figures are available in the online material attached to this paper.

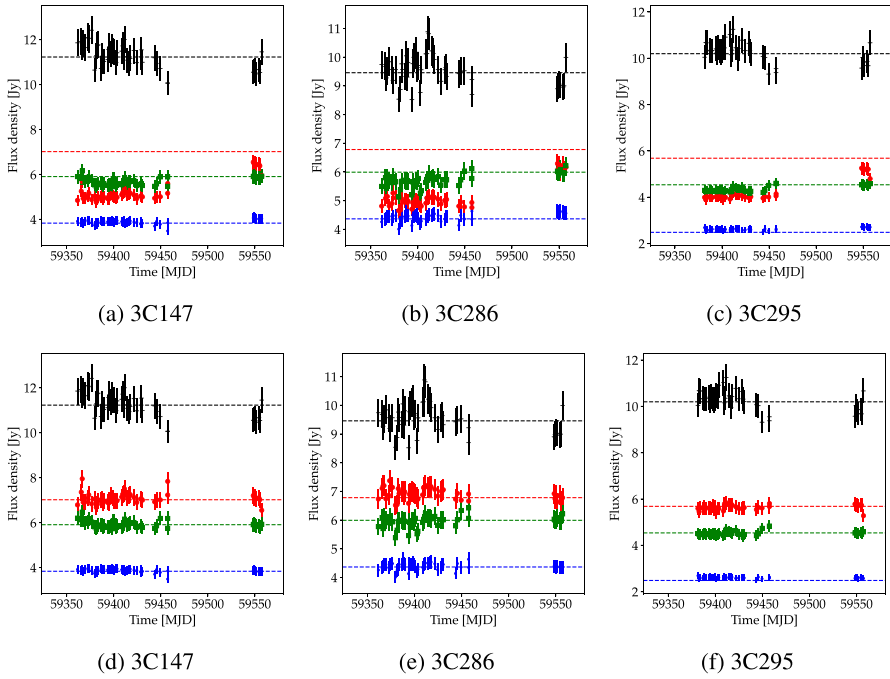


Fig. 2 Light curves for the three flux density calibrator sources observed in the FM-sessions. The dashed line represent the model from [18]. Flux densities in the four VGOS bands 1, 2, 3 and 4 are shown with black crosses, red circles, green squares and blue dots respectively. Note that the vertical scale is different for the different sources. Panels a, b, and c show the data before applying scaling corrections as described in Section 2.3. Panels d, e, and f show the same data after applying the empirical corrections

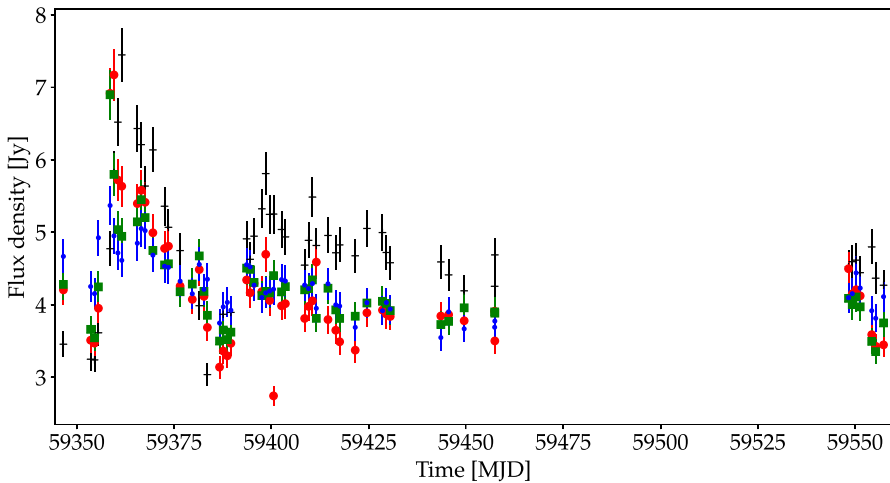


Fig. 3 The multi-frequency light curve of the source 0059+581, as observed in the FM-sessions, shown separately to appreciate the rich variability. Flux densities in the four VGOS bands 1, 2, 3 and 4 are shown with black crosses, red circles, green squares and blue dots respectively

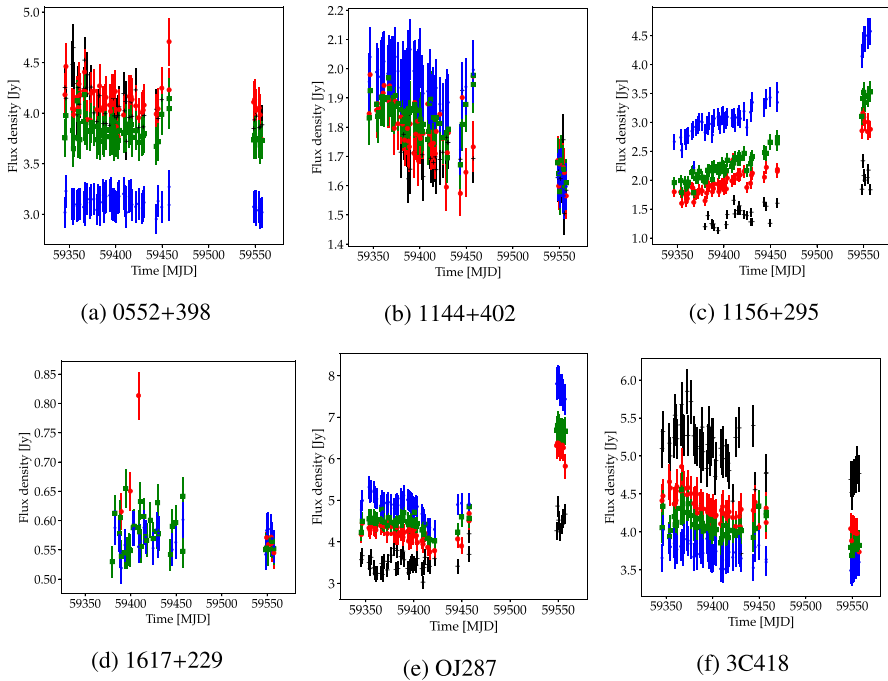


Fig. 4 Multi-frequency light curves of six sources observed in the FM-sessions. Flux densities in the four VGOS bands 1, 2, 3 and 4 are shown with black crosses, red circles, green squares and blue dots respectively. Note that the vertical scale is different for the different sources

4 Discussion

In this section we discuss the limitations of this study, and compare our results with other data from literature.

4.1 Known limitations in scheduling and analysis

In this work we were restricted to short experiments, i.e. a small number of sources, due to limited processing (correlation) power. We used a single 10-core machine, where each experiment took a few hours to process. This enabled one FM-session in the afternoon, and correlation in the evening or following day, before the next session. Some IDVM sessions, which were more closely spaced in time, only included 2 sources to decrease processing time. With more computing power available in the future, we expect to be able to process, and hence also observe, more sources.

We formed Stokes I as the average of the parallel linear polarisation products, i.e. $(HH+VV)/2$. This does not correct for neither parallactic angle differences, nor instrumental leakage. In principle, this could be accounted for by using e.g. PolConvert [12, 13], but this is beyond the scope of this work. Instead we note that since the

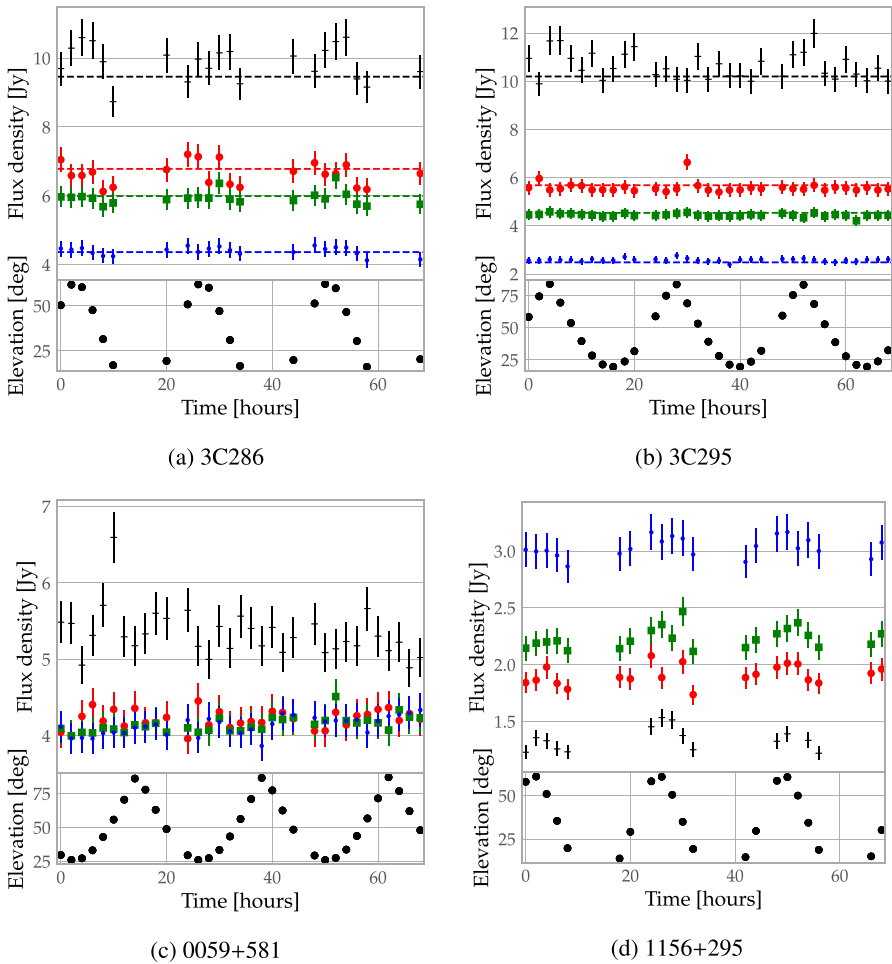


Fig. 5 The top part of each panel show the multi-frequency light curves of the four sources observed in the IDVM-sessions. The bottom part of each panel shows the local elevation angle at observing time. Flux densities in the four VGOS bands 1, 2, 3 and 4 are shown with black crosses, red circles, green squares and blue dots respectively. Note that the vertical scale is different for the different sources. The starting time, given as 0 on the horizontal axis above, was MJD 59397.626

telescopes are so close, the differential parallactic angle is negligible. Furthermore, we empirically find that (for most SPWs and sources), the cross-polarisation products are negligible compared to HH and VV, implying that any instrumental leakage is not significant. We therefore obtain Stokes I directly from HH and VV, ignoring any (empirically negligible) leakage effects.

In this work we conservatively scheduled relatively long scans of 180 s for the flux density reference sources 3C286, 3C295, 3C147, 120 s for the weak 1617+229, and 60 s for the remaining six sources. We find, however, that fringes can be obtained in 30 sec solution intervals for >1 Jy level sources in 32 MHz bandwidth.

This means we could significantly shorten the scan length if combining multiple spectral windows together in fringe-fitting. This is routinely done in geodetic VGOS processing, by correcting for instrumental phase and delay offsets for each SPW so they can all be aligned for the broad-band fringe-fitting. In principle, both instrumental SPW-specific phase and delay offsets, and directional-dependent offsets tracked using the pulse-calibration system, could be incorporated in our analysis. However, these SPW-specific corrections are challenging to apply in a in CASA, since there are not yet standard tasks to include e.g. pulse-calibration data. Since the single-SPW fitting worked sufficiently well to fulfil our aims, we did not pursue the issue of combining multiple SPWs further.

Finally, our RFI-mitigation using *rflag* and filtering SPWs as outliers could be improved. Still, the strategy employed here appears to give robust results in all four VGOS bands.

4.2 Notes on individual sources

We find our sources to be a mix of both stable and variable in time, as well as a range of spectral signatures. In this section we briefly discuss our results for the seven sources in relation to existing literature.

4.2.1 0059+581

0059+581 has been used as a bright and compact fringe finder during VGOS commissioning work. It does however exhibit significant flux density variability on short and long timescales, and has been included in multiple monitoring campaigns at radio [9, 11], gamma-ray [17] and optical [1] wavelengths. This source was the one most often included in our monitoring, already from the start and our FM-results are shown in Fig. 3. We detect at least one apparent flare of emission, in all four bands, with the peak around MJD 59361. We do not detect any significant short-term variability in our IDVM sessions, presented in Fig. 5c. We find our data to be consistent with a flat spectrum, where the tentative excess emission at the lowest band 1 (which has the largest field of view) could be due to other nearby synchrotron sources in the field.

4.2.2 OJ287

OJ287 may host a supermassive black hole binary system [4]. It is known to be variable and has been monitored at multiple wavelengths for over a century (see e.g. [6, 7, 11] and references therein). Our measurements are presented in Figs. 4e. We find OJ287 to exhibit some moderate variability during the first months. However, the significant increase in power observed in our final data points, taken in December 2021, suggest that it has entered an active phase. Continued monitoring of this source at VGOS frequencies could give valuable data for future multi-wavelengths studies.

4.2.3 1156+295

This source has also been included in monitoring campaigns, e.g. [10], and studied with dedicated VLBI observations [27]. As evident from Fig. 4c, the flux density of 1156+295 increases by a factor 2 in a linear fashion during the 7 months spanned by our monitoring. The four bands follow each other, keeping the inverted (more power at higher frequencies) spectrum from start to end. We do not detect significant variability in our short IDVM sessions, see Fig. 5d.

4.2.4 1617+229

The blazar 1617+229 has also been included in monitoring campaigns [10, 20]. It is the weakest source in our sample, with a relatively stable and flat spectrum of about 0.5 Jy as can be seen in Fig. 4d. We note that after the maintenance work (Section 2.3) it appears that we obtain robust estimates of the flux density also in band 2. Although our measurements are internally consistent, and consistent with literature, the results - in particular for the lowest band 1 - could be improved with refined calibration procedures (e.g. combining multiple SPWs in fringe-fitting).

4.2.5 1144+402

1144+402 is identified as a flat-spectrum radio source in the MOJAVE monitoring campaign [11], in good agreement with our results presented in Fig. 4b. We find this source to be stable over our measurement period, with similar flux densities obtained in all four bands.

4.2.6 3C418

3C418 has significant structure both on large (NVSS) and small (VLBI) scales and of interest to astronomers for many years (e.g. [15]). It has been observed frequently in VGOS sessions, and it has been demonstrated that the structure significantly impacts geodetic data analysis [26]. We find this source to be relatively stable, see Fig. 4f, with band 2, 3, 4 flux densities of about 4 Jy. This is consistent with e.g. the S/X-band monitoring from the BVID, which shows a slow increase over time.

4.2.7 0552+398

This source has also been the subject of VLBI observations for many years (e.g. [10, 23]). We find it to be slowly varying with a flat spectrum in bands 1, 2 and 3. The multi-frequency lightcurve given in Fig. 4a is consistent with the past monitoring data available via the BVID.

5 Conclusions

In this work, we have arrived at the following conclusions:

1. The electronics and calibration tables used to monitor system temperatures for the Onsala twin telescopes are working as expected within the nominal 10 % uncertainty.
2. With minor improvements to the model of antenna gain vs. elevation, and corrections for backend systematics, flux densities of ~ 500 mJy-sources could in the future be monitored to within a few % in the 3 to 15 GHz band.
3. We observed a bright multi-frequency flare in the source 0059+581.
4. Once the full international VGOS network is capable of routinely monitoring system temperatures during observations, the astronomical community may get regular broad band flux-density monitoring (and mapping) of hundreds of sources “for free” during geodetic VLBI observations.

Supplementary Information In addition to the manuscript, we will provide for electronic storage: 1. ASCII-text files with full-polarisation flux density measurements obtained for all analysed observations. 2. ASCII-text files with Stokes I flux density values used to create the figures in the paper. 3. A python script used to obtain the full-polarisation flux density measurements from the FITSID1+antab data, as explained in the paper.

Supplementary Information The online version contains supplementary material available at <https://doi.org/10.1007/s10686-022-09867-4>.

Acknowledgements The authors thank Leonid Petrov for constructive comments on a preliminary version of this manuscript. The authors also thank the journal reviewers for constructive comments which improved the final manuscript.

Author contributions All authors contributed to the study conception and design. All authors contributed to the planning of observations. Eskil Varenius, Karine Le Bail, and Rüdiger Haas carried out the observations. Eskil Varenius and Rüdiger Haas correlated the raw voltage data. Eskil Varenius and Francesco Maio analysed the data using CASA. The first draft of the manuscript was written by Eskil Varenius and all authors commented on previous versions of the manuscript. All authors contributed to the interpretation of the data. All authors read and approved the final manuscript.

Funding Open access funding provided by Chalmers University of Technology. F. M. acknowledges funding from the Chalmers Astrophysics and Space Sciences Summer (CASSUM) research program.

Data availability The full-polarisation (HH,HV,VH,VV) and Stokes I flux densities obtained and analysed in this study are included in the supplementary information files of this article. The FITS and antab files generated and analysed in this study are available from the corresponding author on reasonable request.

Code availability The python-script used to analyse the FITS and antab data with CASA is included in the supplementary information files of this article.

Declarations

Conflicts of interest Not applicable.

Ethics approval Not applicable.

Consent to participate Not applicable.

Consent for publication All authors approve the publication of this study.

Open Access This article is licensed under a Creative Commons Attribution 4.0 International License, which permits use, sharing, adaptation, distribution and reproduction in any medium or format, as long as you give appropriate credit to the original author(s) and the source, provide a link to the Creative Commons licence, and indicate if changes were made. The images or other third party material in this article are included in the article's Creative Commons licence, unless indicated otherwise in a credit line to the material. If material is not included in the article's Creative Commons licence and your intended use is not permitted by statutory regulation or exceeds the permitted use, you will need to obtain permission directly from the copyright holder. To view a copy of this licence, visit <http://creativecommons.org/licenses/by/4.0/>.

References

1. Blinov, D., Kiehlmann, S., Pavlidou, V., et al.: RoboPol: AGN polarimetric monitoring data. *Mon. Not. R. Astron. Soc.* **501**(3), 3715–3726 (2021). [arXiv:2012.00008](https://arxiv.org/abs/2012.00008) [astro-ph.HE] <https://doi.org/10.1093/mnras/staa3777>
2. Deller, A.T., Tingay, S., Bailes, M., et al.: DiFX: A Software Correlator for Very Long Baseline Interferometry Using Multi-processor Computing Environments. *Publications of the Astronomical Society of the Pacific* **119**(853), 318–336 (2007). <https://doi.org/10.1086/513572>
3. Deller, A.T., Brisken, W.F., Phillips, C.J., et al.: DiFX-2: A More Flexible, Efficient, Robust, and Powerful Software Correlator. *Publications of the Astronomical Society of the Pacific* **123**(901), 275 (2011). <https://doi.org/10.1086/658907>
4. Dey, L., Valtonen, M.J., Gopakumar, A., et al.: Explaining temporal variations in the jet PA of the blazar OJ 287 using its BBH central engine model. *Mon. Not. R. Astron. Soc.* **503**(3), 4400–4412 (2021). [arXiv:2103.05274](https://arxiv.org/abs/2103.05274) [astro-ph.HE] <https://doi.org/10.1093/mnras/stab730>
5. Haas, R., Casey, S., Conway, J., et al.: Status of the Onsala Twin Telescopes — Two Years After the Inauguration. In: Haas, R., Garcia-Espada, S., López Fernández, J.A. (eds) *Proceedings of the 24th European VLBI for Geodesy and Astrometry (EVGA) working meeting*. ISBN: 978-84-416-5634-5, pp 5–9 (2019)
6. Hudec, R., Bašta, M., Pihajoki, P., et al.: The historical 1900 and 1913 outbursts of the binary blazar candidate OJ287. *Astron. Astrophys.* **559**, A20 (2013). <https://doi.org/10.1051/0004-6361/201219323>
7. Komossa, S., Grupe, D., Parker, M.L., et al.: The 2020 April–June super-outburst of OJ 287 and its long-term multiwavelength light curve with Swift: binary supermassive black hole and jet activity. *Mon. Not. R. Astron. Soc.* **498**(1), L35–L39 (2020). [arXiv:2008.01826](https://arxiv.org/abs/2008.01826) [astro-ph.HE] <https://doi.org/10.1093/mnras/slaa125>
8. Le Bail, K., Varennius, E., Haas, R.: Source flux-density monitoring in the VGOS era. In: Haas, R. (ed) *Proceedings of the 25th European VLBI Group for Geodesy and Astrometry Working Meeting*, pp 90–94 (2021)
9. Lister, M.L., Aller, M.F., Aller, H.D., et al.: MOJAVE. XV. VLBA 15 GHz Total Intensity and Polarization Maps of 437 Parsec-scale AGN Jets from 1996 to 2017. *Astrophys. J. Suppl. Ser.* **234**(1), 12 (2018). [arXiv:1711.07802](https://arxiv.org/abs/1711.07802) [astro-ph.GA] <https://doi.org/10.3847/1538-4365/aa9c44>
10. Lister, M.L., Homan, D.C., Hovatta, T., et al.: MOJAVE. XVII. jet kinematics and parent population properties of relativistically beamed radio-loud blazars. *The Astrophysical Journal* **874**(1), 43 (2019). <https://doi.org/10.3847/1538-4357/ab08ee>.
11. Lister, M.L., Homan, D.C., Kellermann, K.I., et al.: Monitoring Of Jets in Active Galactic Nuclei with VLBA Experiments. XVIII. Kinematics and Inner Jet Evolution of Bright Radio-loud Active Galaxies. *Astrophys. J.* **923**(1), 30 (2021). [arXiv:2108.13358](https://arxiv.org/abs/2108.13358) [astro-ph.HE] <https://doi.org/10.3847/1538-4357/ac230f>

12. Martí-Vidal, I., Roy, A., Conway, J., et al.: Calibration of mixed-polarization interferometric observations. Tools for the reduction of interferometric data from elements with linear and circular polarization receivers. *Astro. Astrophys.* **587**, A143 (2016). [arXiv:1601.04266](https://arxiv.org/abs/1601.04266) [astro-ph.IM] <https://doi.org/10.1051/0004-6361/201526063>
13. Martí-Vidal, I., Mus, A., Janssen, M., et al.: Polarization calibration techniques for the new-generation VLBI. *Astron. Astrophys.* **646**, A52 (2021). [arXiv:2012.05581](https://arxiv.org/abs/2012.05581) [astro-ph.IM] <https://doi.org/10.1051/0004-6361/202039527>
14. McMullin, J.P., Waters, B., Schiebel, D., et al.: CASA Architecture and Applications. In: Shaw, R.A., Hill, F., Bell, D.J. (eds) *Astronomical Data Analysis Software and Systems XVI*, p 127 (2007)
15. Muxlow, T.W.B., Jullian, M., Linfield, R. The Radio Jet in 3C418. In: Fanti, R., Kellermann, K.I., Setti, G. (eds) *VLBI and Compact Radio Sources*, p 141 (1984)
16. Nothnagel, A., Artz, T., Behrend, D., et al.: International VLBI Service for Geodesy and Astrometry. Delivering high-quality products and embarking on observations of the next generation. *J. Geod.* **91**(7), 711–721 (2017) <https://doi.org/10.1007/s00190-016-0950-5>
17. Paliya, V.S., Domínguez, A., Ajello, M., et al.: The Central Engines of Fermi Blazars. *Astrophys. J. Suppl. Ser.* **253**(2), 46 (2021). [arXiv:2101.10849](https://arxiv.org/abs/2101.10849) [astro-ph.HE] <https://doi.org/10.3847/1538-4365/abe135>
18. Perley, R.A., Butler, B.J.: An Accurate Flux Density Scale from 50 MHz to 50 GHz. *Astrophys. J. Suppl. Ser.* **230**(1), 7 (2017). [arXiv:1609.05940](https://arxiv.org/abs/1609.05940) [astro-ph.IM] <https://doi.org/10.3847/1538-4365/aa6df9>
19. Petrachenko, W.T., Niell, A.E., Corey, B.E., et al.: Vlb1 2010: Next generation vlbi system for geodesy and astrometry. In: Kenyon, S., Pacino, M.C., Marti, U. (eds.) *Geodesy for Planet Earth*, pp. 999–1005. Springer, Berlin (2012)
20. Richards, J.L., Hovatta, T., Max-Moerbeck, W., et al.: Connecting radio variability to the characteristics of gamma-ray blazars. *Mon. Not. R. Astron. Soc.* **438**(4), 3058–3069 (2014). [arXiv:1312.3634](https://arxiv.org/abs/1312.3634) [astro-ph.HE] <https://doi.org/10.1093/mnras/stt2412>
21. Shabala, S.S., Rogers, J.G., McCallum, J.N., et al.: The effects of frequency-dependent quasar variability on the celestial reference frame. *Journal of Geodesy* **88**(6), 575–586 (2014). [arXiv:1306.0696](https://arxiv.org/abs/1306.0696) [astro-ph.CO] <https://doi.org/10.1007/s00190-014-0706-z>
22. Sovers, O.J., Fanselow, J.L., Jacobs, C.S.: Astrometry and geodesy with radio interferometry: experiments, models, results. *Reviews of Modern Physics* **70**(4), 1393–1454 (1998). [arXiv:astro-ph/9712238](https://arxiv.org/abs/astro-ph/9712238) [astro-ph] <https://doi.org/10.1103/RevModPhys.70.1393>
23. Spangler, S.R., Mutel, R.L., Benson, J.M.: VLBI observations of the radio sources 0552+398 and 1848+283: measurements of the departure from equipartition. *Astrophys. J.* **271**, 44–50 (1983). <https://doi.org/10.1086/161174>
24. Tuccari, G., Alef, W., Dornbusch, S., et al.: DBBC3 the new wide-band backend for VLBI. In: *14th European VLBI Network Symposium & Users Meeting (EVN 2018)*, p 140 (2018)
25. Xu, M.H., Anderson, J.M., Heinkelmann, R., et al.: Structure effects for 3417 celestial reference frame radio sources. *Astrophys. J. Suppl. Ser.* **242**(1), 5 (2019). <https://doi.org/10.3847/1538-4365/ab16ea>
26. Xu, M.H., Anderson, J.M., Heinkelmann, R., et al.: Observable quality assessment of broadband very long baseline interferometry system. *Journal of Geodesy* **95**(5), 51 (2021). [arXiv:2102.12750](https://arxiv.org/abs/2102.12750) [astro-ph.IM] <https://doi.org/10.1007/s00190-021-01496-7>
27. Zhao, W., Hong, X.Y., An, T., et al.: Radio structure of the blazar 1156 + 295 with sub-pc resolution. *Astron. Astrophys.* **529**, A113 (2011). [arXiv:1102.3046](https://arxiv.org/abs/1102.3046) [astro-ph.CO] <https://doi.org/10.1051/0004-6361/201016192>

Publisher's note Springer Nature remains neutral with regard to jurisdictional claims in published maps and institutional affiliations.