



UNIVERSITÀ DI PARMA

ARCHIVIO DELLA RICERCA

University of Parma Research Repository

Porous Silicon Nanoparticles Embedded in Poly(lactic-co-glycolic acid) Nanofiber Scaffolds Deliver Neurotrophic Payloads to Enhance Neuronal Growth

This is the peer reviewed version of the following article:

Original

Porous Silicon Nanoparticles Embedded in Poly(lactic-co-glycolic acid) Nanofiber Scaffolds Deliver Neurotrophic Payloads to Enhance Neuronal Growth / Zuidema, Jonathan M.; Dumont, Courtney M.; Wang, Joanna; Batchelor, Wyndham M.; Lu, Yi-Sheng; Kang, Jinyoung; Bertucci, Alessandro; Ziebarth, Noel M.; Shea, Lonnie D.; Sailor, Michael J.. - In: ADVANCED FUNCTIONAL MATERIALS. - ISSN 1616-301X. - 30:25(2020), p. 2002560. [10.1002/adfm.202002560]

Availability:

This version is available at: 11381/2887872 since: 2021-12-17T10:32:48Z

Publisher:

Wiley-VCH Verlag

Published

DOI:10.1002/adfm.202002560

Terms of use:

openAccess

Anyone can freely access the full text of works made available as "Open Access". Works made available

Publisher copyright

(Article begins on next page)

Porous Silicon Nanoparticles Embedded in Poly(lactic-co-glycolic acid) Nanofiber Scaffolds Deliver Neurotrophic Payloads to Enhance Neuronal Growth

*Jonathan M. Zuidema, Courtney M. Dumont, Joanna Wang, Wyndham M. Batchelor, Yi-Sheng Lu, Jinyoung Kang, Alessandro Bertucci, Noel M. Ziebarth, Lonnie D. Shea, and Michael J. Sailor**

Dr. J.M. Zuidema, Dr. A. Bertucci, Prof.
M. J. Sailor

Department of Chemistry and
Biochemistry
University of California San Diego
9500 Gilman Drive
La Jolla, CA 92093, USA

E-mail: msailor@ucsd.edu

Prof. C.M. Dumont
Department of Biomedical Engineering

University of Miami
1251 Memorial Drive
Coral Gables, FL 33146, USA

Prof. C.M. Dumont
John T. Macdonald Foundation
Biomedical Nanotechnology Institute

University of Miami
1951 NW 7th Avenue
Miami, FL 33136, USA

J. Wang, Y. Lu
Materials Science and Engineering
University of California San Diego
9500 Gilman Drive

La Jolla, CA 92093, USA

Prof. N.M. Ziebarth, W.M. Batchelor
Department of Biomedical Engineering

University of Miami
1251 Memorial Drive

Dr. J. Kang

Department of Nanoengineering
University of California San Diego
9500 Gilman Drive
La Jolla, CA 92093, CA

Dr. A. Bertucci

Department of Chemical Sciences and
Technologies

University of Rome Tor Vergata
Via della Ricerca Scientifica 1

00133 Rome, Italy

Prof. L.D. Shea

Department of Biomedical Engineering
University of Michigan

2200 Bonisteel Boulevard
Ann Arbor, MI 48109, USA

Prof. L.D. Shea

Department of Chemical Engineering
University of Michigan

2200 Bonisteel Boulevard
Ann Arbor, MI 48109, USA

Keywords: neuron guidance; tissue engineering; controlled release; PTEN inhibitor;
RNAaptamer; tropomyosin-related kinase receptor type B; Nerve Growth Factor

Abstract

1
2 Scaffolds made from biocompatible polymers provide physical cues to direct the extension of
3 neurites and to encourage repair of damaged nerves. The inclusion of neurotrophic payloads
4 in these scaffolds can substantially enhance regrowth and repair processes. However, many
5 promising neurotrophic candidates are excluded from this approach due to incompatibilities
6 with the polymer or with the polymer processing conditions. This work provides one solution
7 to this problem by incorporating porous silicon nanoparticles (pSiNPs) that are pre-loaded
8 with the therapeutic into a polymer scaffold during fabrication. The nanoparticle-drug-
9 polymer hybrids are prepared in the form of oriented poly(lactic-co-glycolic acid) nanofiber
10 scaffolds. We test three different therapeutic payloads: bpV(HOpic), a small molecule
11 inhibitor of phosphatase and tensin homolog (PTEN); an RNA aptamer specific to
12 tropomyosin-related kinase receptor type B (TrkB); and the protein nerve growth factor
13 (NGF). Each therapeutic is loaded using a loading chemistry that is optimized to slow the rate
14 of release of these water-soluble payloads. The drug-loaded pSiNP-nanofiber hybrids release
15 approximately half of their TrkB aptamer, bpV(HOpic), or NGF payload in 2, 10, and >40
16 days, respectively. The nanofiber hybrids increase neurite extension relative to drug-free
17 control nanofibers in a dorsal root ganglion explant assay.
18
19
20
21
22
23
24

25 Polymer nanofibers are used in numerous tissue engineering, regenerative medicine,
26 and *in vitro* applications due to the ease of their fabrication and their obvious morphological
27 and functional topographical influences on stem cell differentiation,^[1] neuron guidance,^[2]
28 cardiomyocyte contractility,^[3] oligodendrocyte myelination,^[4] and many other cellular
29 processes. However, polymer nanofibers have yet to demonstrate utility in the clinic^[5-6], and
30 the limitations of polymer nanofiber interventions relying solely on topographical structures
31 for their therapeutic impact have driven a push to imbue nanofibers with additional beneficial
32 properties.^[7-9] Of these, tunable drug release is emerging as a necessary component for state-
33 of-the-art tissue engineering scaffolds. While many different fabrication techniques have been
34 devised, these methods still do not allow for the creation of nanofibers that can be readily
35 modified to release distinct types of drugs at tunable rates.
36
37
38
39
40
41
42
43
44
45
46
47
48
49
50
51

52 There are now many approaches to incorporate active pharmaceutical ingredients
53 (APIs) into polymer nanofibers. Because organic solvents are used in the preparation of most
54 polymer scaffolds of interest, hydrophobic drugs can be dispersed throughout polymer
55 nanofibers by simply adding them to the organic solvent during fabrication.^[10] For
56
57
58
59
60
61
62
63
64
65

1 hydrophilic drugs or sensitive biologics, which typically are not compatible with organic
2 solvents, other approaches are required. One relatively simple method is to coat or conjugate
3 the drug to the surface of the polymer nanofibers, although this generally leads to a rapid
4 (burst) release of drug from the scaffold over the course of a few hours to a few days.^[11]
5
6 Emulsion electrospinning has been used to disperse biologics throughout the polymer matrix,
7 which results in a relatively quick release profile of the incorporated payload (days).^[12-14] Co-
8 axial/tri-axial electrospinning produces core-shell nanofibers and affords more control over
9 the fabrication process and drug release profiles.^[15-20] These techniques have been used to
10 generate materials that release sensitive biologics over varying time scales (hours to weeks).
11 However, throughput is low because fabrication parameters must be optimized for each new
12 drug to ensure consistency of the fibers produced.

13
14 Hybrid polymer scaffolds that contain drug-loaded nanoparticles dispersed throughout
15 the polymer nanofiber matrix have demonstrated the ability to hold and slowly release
16 hydrophilic drugs in their active forms. For example, chitosan nanoparticles, loaded with
17 nucleic acid therapeutics and incorporated into an electrospinning solution, have been shown
18 to form nanofiber composites that release active RNA over multiple weeks.^[21] Similarly,
19 silica nanoparticles loaded with hydrophilic small molecules and incorporated into polymer
20 nanofibers displayed release from hours to multiple days.^[22-23] Most relevant to the present
21 study, porous silicon particles have been incorporated into polymer fibers for tissue
22 engineering applications,^[24-26] including hybrid nanofibers that incorporated lysozyme-loaded
23 porous silicon nanoparticles (pSiNPs) into polycaprolactone (PCL) nanofibers.^[27] Fabricated
24 using a spray nebulization method rather than electrospinning, these latter pSiNP-PCL
25 nanofibers exhibited uniaxial orientation and they released active protein (lysozyme) over 8
26 weeks. Attractive features of pSiNPs in this context include their low toxicity,
27 degradability,^[28-29] intrinsic photoluminescent properties,^[30-31] high drug loading capacity,<sup>[32-
28 34]</sup> and a set of chemistries that tolerate various classes of drugs and biologics.^[35-39]

1 While the prior work demonstrated the potential for tissue engineering applications
2 using a surrogate protein, the ability of hybrid pSiNP-polymer systems to deliver an API that
3 can impact a real biological response (e.g., tissue growth) has not been established. Here we
4 report the effective delivery of three different neurotrophic agents: the small molecule
5 bpV(HOpic) which is an inhibitor of phosphatase and tensin homolog (PTEN); an RNA
6 aptamer that binds to tropomyosin-related kinase receptor type B (TrkB); and the protein
7 nerve growth factor (NGF). We quantify the release rates of each of these agents from
8 polymer/pSiNP nanofiber hybrids, using poly(lactic-*co*-glycolic acid) (PLGA) as the polymer
9 scaffold. We demonstrate the bioactivity of the released payloads using a dorsal root ganglion
10 (DRG) neurite extension assay. We find that all three API formulations demonstrate guidance
11 of DRG explant neurite outgrowth and enhancement of DRG neurite extension relative to
12 control polymer/pSiNP nanofibers that contain no API. This work represents the first time
13 pSiNP/PLGA nanofiber hybrids have been used to deliver neurotrophic factors to enhance
14 neurite extension—a critically important biological process needed to effect repair of
15 traumatically injured nerves.

16 The three different payloads were chosen for loading into pSiNPs based on their
17 known ability to enhance neurite extension when administered as free molecules. The small
18 molecule bpV(HOpic) is an inhibitor of PTEN, and PTEN inhibition has previously been
19 shown to increase neurite outgrowth.^[40-41] RNA aptamers are single stranded oligonucleotides
20 that fold into defined secondary structures and bind to their targets, such as proteins and cell
21 surface receptors.^[42] Activation of the transmembrane receptor, TrkB, leads to the expression
22 of the extracellular signal-regulated kinases (ERK) and mitogen-activated protein kinase
23 kinases (MEK) signaling pathway, which is implicated in sustaining neurite outgrowth.^[43]
24 RNA aptamers have been designed that function as ligands for the TrkB receptor, and these
25 aptamers lead to increased neuronal survival in culture and improved functional outcomes in
26 seizure animal models.^[44] Nerve growth factor (NGF) is part of the neurotrophin family of

1
2
3
4
5
6
7
8
9
10
11
12
13
14
15
16
17
18
19
20
21
22
23
24
25
26
27
28
29
30
31
32
33
34
35
36
37
38
39
40
41
42
43
44
45
46
47
48
49
50
51
52
53
54
55
56
57
58
59
60
61
62
63
64
65

molecules, and it binds with high affinity to the transmembrane receptor TrkA, signaling through a similar MEK-ERK pathway as TrkB activation.^[45] Many studies have shown the ability of free NGF to increase neurite extension.^[46-48] Because of differences in size, shape, and electrostatic charge of the three APIs, three distinct chemistries were used to load them into pSiNPs (**Figure 1**).

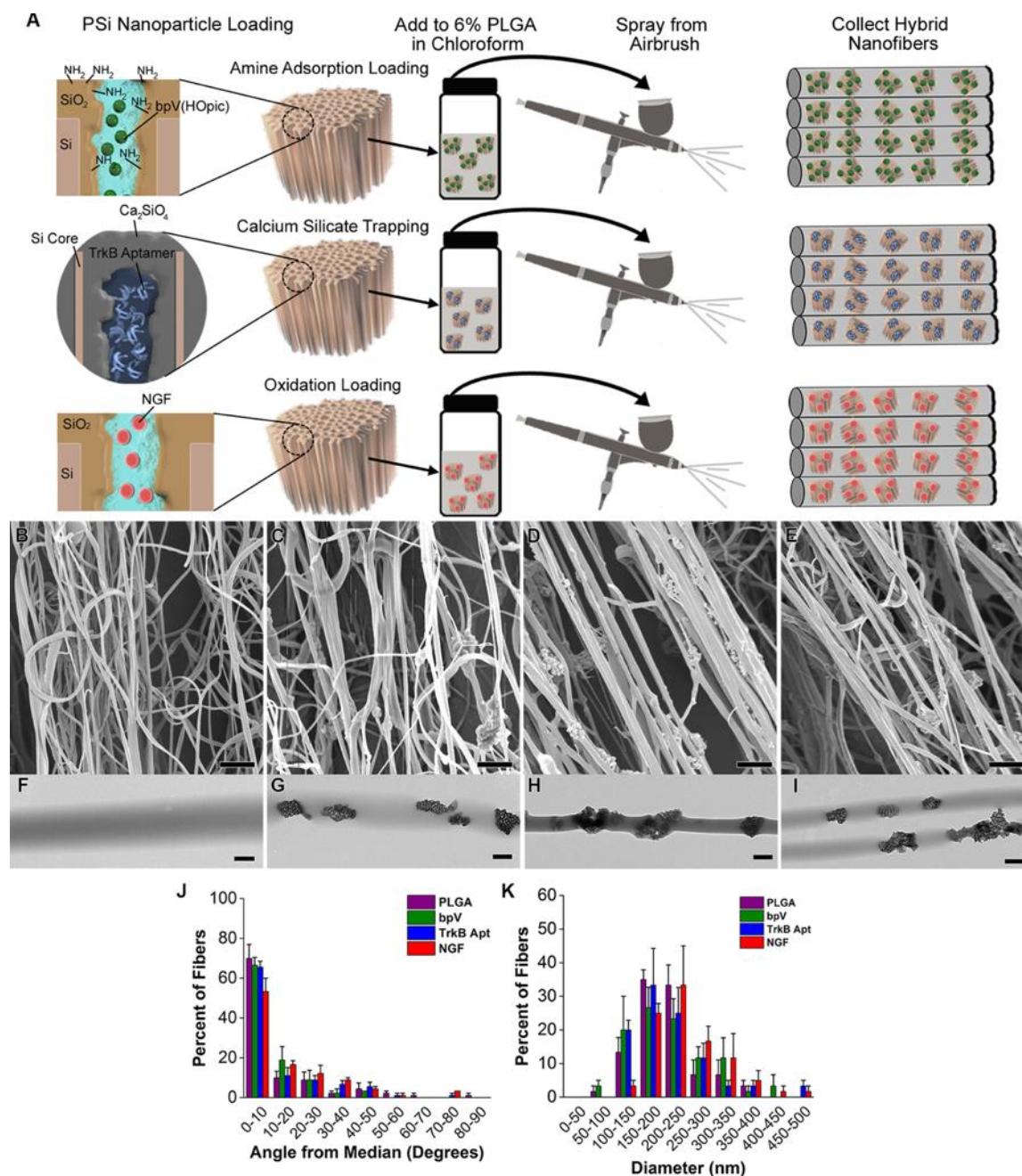


Figure 1. Preparation of drug-loaded pSiNP/PLGA nanofiber scaffolds. (A) Schematic depicting chemistries used to load each drug: “Amine Adsorption Loading” (top) involves pSiNPs whose inner pore walls have been grafted to a primary amine that binds the small molecule drug bpV(HOpic) via electrostatic interactions; “Calcium Silicate Trapping”

1 (middle) involves condensation of the highly negatively charged TrkB aptamer in a calcium
2 silicate matrix contained within the pSiNPs; and “Oxidation Loading” (bottom) involves mild
3 oxidation of the silicon skeleton on the pSiNPs that physically traps the NGF protein within
4 the nanostructure. The relevant particle type is then loaded into a chloroform solution of
5 PLGA and the nanofiber scaffolds are generated by spray nebulization through an airbrush.
6 (B-E) SEM images of (B) PLGA nanofiber controls, (C) bpV(HOpic)-pSiNP/PLGA nanofiber
7 hybrids, (D) TrkB aptamer-pSiNP/PLGA nanofiber hybrids, and (E) NGF-pSiNP/PLGA
8 nanofiber hybrids. (F-I) TEM images of (F) PLGA nanofiber controls, (G) bpV(HOpic)-
9 pSiNP/PLGA nanofiber hybrids, (H) TrkB aptamer-pSiNP/PLGA nanofiber hybrids, and (I)
10 NGF-pSiNP/PLGA nanofiber hybrids. (J) Degree of alignment of nanofibers calculated by
11 measuring the angle of individual fibers relative to the median angle of alignment. All fiber
12 types show similar, uniaxial alignment (n=3). (K) Diameter of nanofibers calculated by
13 measuring the diameter of 30 fibers in each image. Similar diameter ranges are seen between
14 all groups (n=3).
15
16

17
18
19 The pSiNP carriers were prepared in a similar fashion for all APIs, following the
20 previously reported “perforation etching” procedure.^[49] Briefly, the process involved
21 electrochemical anodization of single crystal silicon to generate a stratified porous silicon
22 layer, removal of the porous layer and creation of the pSiNPs *via* ultrasonic fracture. As-
23 prepared pSiNPs (prior to drug loading) displayed mean diameters of 187 ± 3 nm, zeta
24 potential of -45 ± 1 mV, nominal porosity of $47 \pm 3\%$, and pore diameters ranging from 10-20
25 nm (Figure S1 and Table S1, Supplementary Information). Each API was then loaded into the
26 pSiNPs using chemistries specifically suited to its particular molecular class.
27
28
29
30
31
32
33
34
35
36
37

38
39 The small molecule drug bpV(HOpic) was loaded *via* an electrostatic adsorption
40 process. Due to the net negative charge of bpV(HOpic), the inner pore walls of the pSiNPs
41 were first chemically modified to display a positive surface charge. The chemistry involved a
42 ring-opening click-reaction of the cyclic diazasilane 2,2-dimethoxy-1,6-diaza-2-
43 silacyclooctane, which generates a primary amine at the surface of the pSiNPs.^[50] Zeta
44 potential measurement (35 ± 5 mV) confirmed the positive surface charge. These amine-
45 functionalized pSiNPs were then loaded with bpV(HOpic) from deionized (DI) water to a
46 mass loading of $16 \pm 1\%$, which resulted in a reduction of the zeta potential to 4 ± 2 mV. The
47 bpV(HOpic)-loaded pSiNPs displayed an average size (by dynamic light scattering, DLS) of
48 262 ± 1 nm.
49
50
51
52
53
54
55
56
57
58
59
60
61
62
63
64
65

1 The TrkB aptamer was loaded into as-etched pSiNPs *via* a calcium silicate
2 condensation chemistry previously described.^[51] Because the process employs high
3 concentrations of Ca (II) ions, this chemistry is particularly well suited for stabilization and
4 trapping of negatively charged, highly water-soluble nucleic acids in porous silicon
5 nanostructures; in the present case the TrkB aptamer was loaded to a mass percentage of $14 \pm$
6 0.3%. The loaded particles displayed an average particle size of 257 ± 2 nm and a zeta
7 potential of 3.7 ± 0.4 mV.
8
9

10 The NGF protein was loaded using an oxidative trapping technique, where the protein
11 becomes trapped in the pSiNP pores as the pore walls are oxidized in an aqueous buffer.^[27, 50]
12 Overnight loading of NGF into pSiNPs from phosphate buffered saline (PBS) resulted in a
13 mass loading of $0.21 \pm 0.07\%$, average particle size of 206 ± 2 nm, and zeta potential of -24
14 ± 4 mV. The mass loading of NGF was substantially lower than what was obtained for the
15 other two techniques due to the low concentration of NGF used in the loading solution. A
16 higher mass loading was not necessary because of the high potency of this molecule. It was
17 estimated that this loading level would result in an *in vitro* concentration of NGF in excess of
18 the ED₅₀ concentration of 0.3 ng mL^{-1} (0.01 nM) required to induce neurite outgrowth in
19 cultured sensory neurons.^[52]
20
21

22 Each of the API-loaded-pSiNPs were then incorporated into uniaxial PLGA nanofibers
23 using an airbrush nebulization technique, following a previously reported method.^[27]
24 Scanning electron microscope (SEM) images revealed uniaxial alignment of the collected
25 nanofibers (Figure 1B-E), with average angles from the median angle of alignment of 12.3
26 $\pm 17.6^\circ$, $9.6 \pm 11.3^\circ$, $12.6 \pm 15.6^\circ$, and $15.3 \pm 16.7^\circ$ for PLGA, bpV(HOpic)-PLGA, TrkB
27 aptamer-PLGA, and NGF-PLGA nanofibers, respectively (Figure 1J). For all the nanofiber
28 hybrids, more than 70% of the fibers were within 20° of the median angle of alignment, and
29 more than 80% of the fibers were within 30° of the median angle of alignment. SEM
30 measurements (Figure 1F-I) indicated average nanofiber diameters of 209 ± 60 nm, 211 ± 78
31
32
33
34
35
36
37
38
39
40
41
42
43
44
45
46
47
48
49
50
51
52
53
54
55
56
57
58
59
60
61
62
63
64
65

1 nm, 213 ± 78 nm, and 250 ± 79 nm for PLGA, bpV(HOpic)-PLGA, TrkB aptamer-PLGA, and
2 NGF-PLGA nanofibers, respectively (Figure 1K). The diameters of the nanofibers were
3
4 similar to the diameter of the pSiNPs, and some isolated nanoparticles were observed outside
5 the nanofiber structures in both the SEM (Figure 1C-E) and transmission electron microscope
6 (TEM) (Figure 1G-I) micrographs, although the majority of the nanoparticles appeared to be
7 encapsulated by polymer. In lower magnification TEM images, pSiNPs can be found both
8 dispersed as isolated particles or consolidated into clusters in different regions of the
9 nanofibers (Figure S2, Supplemental Information). Water contact angle values ($137 \pm 7^\circ$, 136
10 $\pm 4^\circ$, and $133 \pm 4^\circ$ for bpV(HOpic)-PLGA, TrkB aptamer-PLGA, and NGF-PLGA
11 nanofibers, respectively, (Figure S3, Supplemental Information) were similar to the value
12 measured on pure PLGA nanofibers ($134 \pm 1.8^\circ$), indicating that the nanoparticles exerted
13 little impact on the water contact angle of the nanofibers.
14
15
16
17
18
19
20
21
22
23
24
25
26
27
28

29 The pSiNPs used in these studies displayed intrinsic photoluminescence (PL) derived
30 from quantum confinement in the silicon nanocrystallites comprising the silicon skeleton.^[30]
31 This property has interesting applications in biosensing,^[53] self-reporting drug release,^[54] two-
32 photon imaging,^[55] and time-gated *in vivo* imaging,^[56-57] and in this work it is used to
33 definitively identify the pSiNPs in the polymer fibers. Previously, we showed that
34 photoluminescent pSiNPs incorporated into PCL nanofibers displayed broad PL emission (λ_{em}
35 = 600-1000nm), and long emission lifetimes. This latter property allowed separation of the
36 luminescent pSiNPs from polymer autofluorescence and light scattering phenomena using
37 time-gated imaging.^[27] All three of the loading chemistries used here generate
38 photoluminescent pSiNPs with emission quantum yields ranging from 8-23%.^[27, 50-51, 58]
39
40
41
42
43
44
45
46
47
48
49
50
51
52

53 Using UV excitation ($\lambda_{ex} = 365$ nm), bpV(HOpic)-PLGA, TrkB aptamer-PLGA, and
54 NGF-PLGA nanofibers all exhibited the broad photoluminescence emission spectra
55 characteristic of pSiNPs (Figure S4A-E, Supplemental Information). In order to benchmark
56 the ability of time-gated imaging to discriminate these nanoparticles from autofluorescent
57
58
59
60
61
62
63
64
65

1 tissues, images were collected from the pSiNP/PLGA materials and from the excised brain of
2 a mouse. When a 5 μ s time gate was used to collect the images, the high level of
3
4 autofluorescence characteristic of brain tissue was completely removed, while the
5
6 pSiNP/polymer scaffolds were readily observed (Figure S4F,G, Table S1, Supplemental
7
8 Information). Measurements of pristine PLGA nanofiber controls (containing no SiNPs) also
9
10 showed no image contrast in the time-gated images, confirming the presence of pSiNPs in the
11
12 hybrid scaffolds.
13
14

15
16
17 Because of the wide range of indications for which drug-delivering polymer scaffolds
18
19 might play a role, there is a wide range of temporal release profiles desired. Furthermore, an
20
21 optimal scaffold chemistry needs to balance potency, duration of action, and side
22
23 effects/toxicity for a given API. In the present case, we employed three distinct loading
24
25 chemistries that were previously optimized for specific classes of molecules. For the small
26
27 molecule drug, bpV(HOpic), a pSi adsorption loading technique was used because this
28
29 method has previously shown a burst release profile for hydrophilic small molecules over
30
31 short (minutes-hours) time scales.^[59] Calcium-silicate trapping was used for the TrkB
32
33 aptamer, as this pSi loading chemistry has a release profile in the range of a few hours to 1
34
35 day.^[60] The oxidation trapping method was used for NGF because it has previously been
36
37 shown to release proteins over multiple days with minimal loss in activity.^[27, 50]
38
39
40
41
42

43
44 Payload release from each of the pSiNP/PLGA nanofiber systems was determined as a
45
46 function of time incubated in a PBS buffer at 37 °C. The small molecule API bpV(HOpic)
47
48 released from the scaffold over a 10 day period (**Figure 2**), with a pronounced burst release
49
50 (584 ± 55 pmoles mg^{-1} nanofibers) during the first 2 days (Fig. S5A, Supplemental
51
52 Information). The release then slowed to a steady, relatively linear profile for the remaining 8
53
54 days, and after 10 days of incubation a total of 744 ± 16 pmoles of API per mg of nanofibers
55
56 was released. Of the incorporated bpV(HOpic), $38 \pm 4\%$ was released over the first 2 days,
57
58 with $49 \pm 6\%$ released over the 10 day study period (Figure 2B). The nanofibers containing
59
60
61
62
63
64
65

TrkB aptamer-loaded pSiNPs released $77 \pm 5\%$ of the aptamer payload over a 20 day period (Fig. 2C). A relatively large quantity was released in the first 2 days (326 ± 5 pmoles mg^{-1} nanofibers), which slowed between days 2-4 (67 ± 5 pmoles mg^{-1} nanofibers), and then a slower, linear release was observed for the remaining 20 days (average of 9 ± 3 pmoles mg^{-1} nanofibers 48h^{-1}), for a total of 464 ± 17 pmoles mg^{-1} nanofibers released over 20 days (Fig. 2C and Fig. S5B, Supplemental Information). Nanofibers containing NGF-loaded pSiNPs released the protein growth factor payload over a 6 week period (Fig. 2D and Fig. S5C, Supplemental Information). The temporal release profile for this chemistry showed a delayed burst: 0.30 ± 0.05 ng NGF mg^{-1} nanofibers was released in the first 2 days, 3 ± 2 ng mg^{-1} nanofibers released between days 2-4, and 10 ± 5 ng mg^{-1} nanofibers released between days 4-6. Release slowed again at later times, with an average of 4 ± 1 ng mg^{-1} nanofibers released between days 6 to 12 and 1.5 ± 0.9 ng mg^{-1} nanofibers 48h^{-1} for the remaining time of the release study (cumulative release of 48 ± 16 ng mg^{-1} nanofibers, or $32 \pm 11\%$ of the incorporated NGF was released over the 6 week study period).

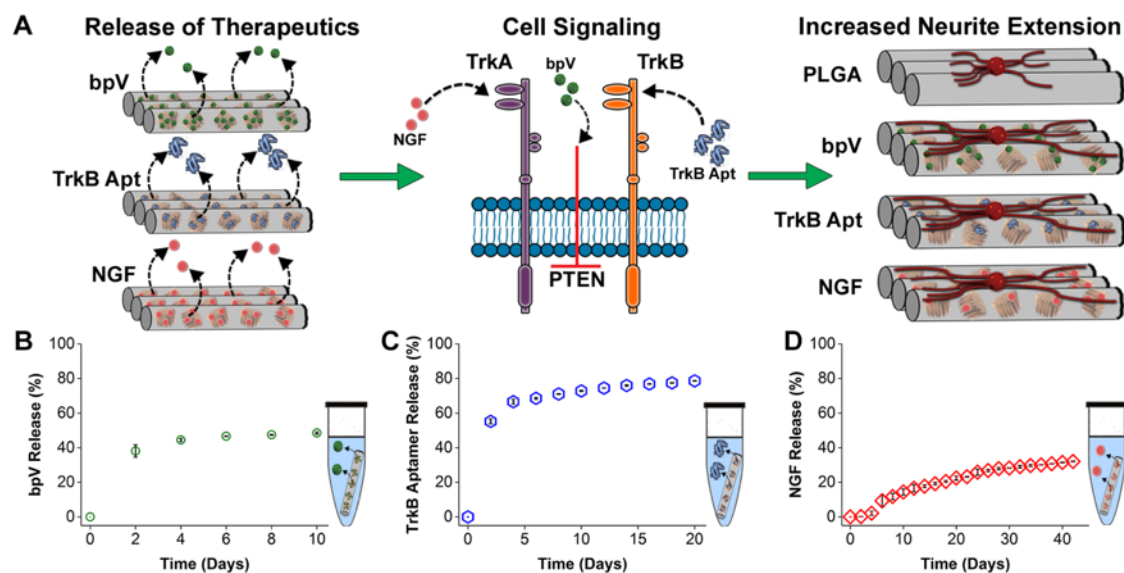


Figure 2. Mode of action of the three neurotrophic agents studied in this work and their temporal release characteristics from hybrid pSiNP/PLGA nanofibers. (A) Schematic depicting the different modes of action of each of the three payloads released from the hybrid nanofiber scaffolds. Once released from the relevant scaffold (left), bpV(HOPic) blocks PTEN intracellularly, TrkB aptamer acts as a ligand for TrkB, and NGF binds to its receptor (TrkA) (middle). Growth of neurites from DRG explants placed on these nanofibers is hypothesized to be enhanced compared to a PLGA nanofiber control (right). (B-D) Percent of API payload released from hybrid PLGA nanofibers as a function of time in PBS buffer at

37 °C. (A) $49 \pm 5.6\%$ of incorporated bpV(HOpic) was released over the 10-day release period. (B) $77 \pm 4.9\%$ of incorporated TrkB aptamer was released over the 20 day release period. (C) $32 \pm 11\%$ of incorporated NGF was released over the 42 day release period.

Previously, it was demonstrated that the 75:25 (L:G) composition of PLGA nanofibers used in this work show very small changes in mass over an 8-week time period when in PBS solutions at 37°C.^[61-62] We used SEM and AFM measurements to probe how inclusion of pSiNPs alters the nanofiber surface after 7 days in PBS at 37°C. Control PLGA nanofibers showed minimal surface roughness at both 0 and 7 days in PBS at 37°C (Figure S6A, B,E,F Supplemental Information). By contrast, the pSiNP/PLGA hybrid nanofibers displayed obvious evidence of degradation (Figure S6C,D, Supplemental Information). The porous nanoparticle structure is evident in the SEM images prior to degradation (Figure S6C, Supplemental Information). After 7 days in PBS the pSiNPs have visibly degraded (Figure S6D, Supplemental Information) and the polymer fibers displayed a marked increase in surface roughness, with surface indentations (measured by AFM) of 10-40 nm in depth (Figure S6G, H, Supplemental Information). Prior to degradation, PLGA and pSiNP/PLGA hybrid nanofibers demonstrated similar Young's moduli of 122 ± 33 kPa and 90 ± 4 kPa, respectively (Figure S6I, Supplemental Information). These values lie in the range of PLGA moduli previously reported using similar AFM nanoindentation methods.^[63] Interestingly, while the PLGA nanofibers actually displayed a lower Young's modulus after 7 days (32 ± 8 kPa), pSiNP/PLGA hybrid nanofibers showed an increase in Young's modulus (to 198 ± 41 kPa). The degradation of the pSiNPs at the surface of the nanofibers observed following the 1 week incubation period is consistent with the rapid release of bpV(HOpic) and the TrkB aptamer observed in the first week of PBS exposure.

We next evaluated the impact of the released therapeutics on neurite extension using whole DRG explants from P2 C57BL/6J mouse pups. DRG seeded onto the pSiNP/PLGA nanofiber hybrids were immersed in neurobasal media supplemented with B27 and N2, but no

1 additional neurotrophic factors, so that the media itself had a limited capacity to encourage the
2 outgrowth of neurites from the DRG. In addition, the PLGA scaffolds were coated with
3
4 laminin ($5\mu\text{g mL}^{-1}$) to improve the adhesion of DRG explants to the hydrophobic scaffolds.
5
6 Following 7 days in culture, the DRG were fixed and stained with NF200 (neurites) and
7
8 Hoechst (nuclei) for analysis.
9
10

11 The alignment of the neurites extending on the hybrid nanofibers was analyzed and the
12 results are presented in **Figure 3**. Degree of alignment is an important parameter because
13
14 neurite growth alignment has been shown to improve nerve regeneration following injury.<sup>[64-
15
16
17
18
19
20
21
22
23
24
25
26
27
28
29
30
31
32
33
34
35
36
37
38
39
40
41
42
43
44
45
46
47
48
49
50
51
52
53
54
55
56
57
58
59
60
61
62
63
64
65</sup> Neurites growing from the DRG were uniaxially oriented due to the uniaxial alignment of
the hybrid nanofiber scaffolds (Fig. 3A-E), with $54 \pm 8\%$, $64 \pm 13\%$, $69 \pm 3\%$, and $59 \pm 2\%$ of
the extending neurites aligned within 15° of the median angle of neurite alignment for PLGA,
bpV(HOpic)-PLGA, TrkB aptamer-PLGA, and NGF-PLGA nanofibers, respectively (Fig.
3F). When DRG explants were cultured on flat PLGA films, a significantly lower percentage
($16 \pm 6.5\%$) of the extending neurites were within 15° of the median angle of neurite
alignment compared to all the nanofiber groups. There were also significantly fewer neurites
extending between $75-90^\circ$ from the median angle of alignment (Fig. 3F). These results
demonstrate the ability of the topography created by the hybrid nanofibers to uniaxially orient
the outgrowth of extending neurites from cultured DRG explants.

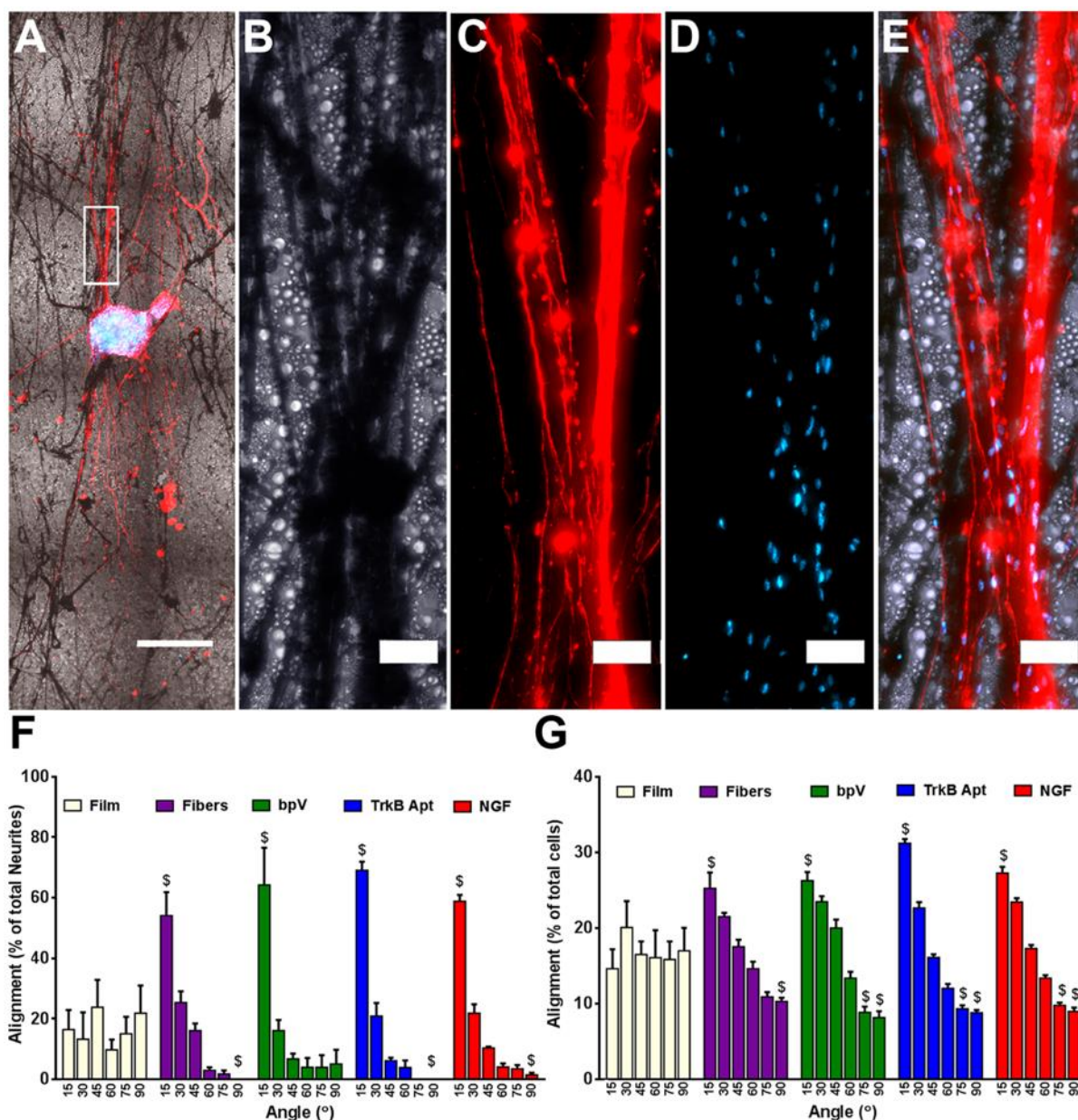


Figure 3. Alignment of extending neurites and migrating cells cultured on the different nanofiber scaffolds. (A) Low magnification (5x) image of NF200 stained DRG explant growing along pure PLGA nanofibers. (B) High magnification bright field image of nanofibers, (C) neurites, (D) Hoechst stained nuclei, and (E) the merged image of all three. (F) Alignment of extending neurites from DRG explants. When compared to DRG explants grown on flat PLGA films, significantly more neurites extended within 15° and significantly fewer grew between 75-90° of the median angle of neurite alignment on all four fiber groups. No differences were seen between any of the fiber groups. (G) Angle of the long axis of cells migrating away from the DRG explants. When compared to DRG explants grown on films, significantly more long axes of cells were within 15° and significantly fewer grew between 75-90° of the median angle of cellular alignment on all four fiber groups. For bpV(HOPic), TrkB aptamer, and NGF pSiNP/PLGA hybrid nanofibers, significantly fewer cellular long axes were with 60-75° of the median angle of cellular alignment compared to explants on PLGA films. Scale Bar=500 μm (A), 50 μm (B-E); n=5; \$= p < 0.05 compared to PLGA films.

1
2
3
4
5
6
7
8
9
10
11
12
13
14
15
16
17
18
19
20
21
22
23
24
25
26
27
28
29
30
31
32
33
34
35
36
37
38
39
40
41
42
43
44
45
46
47
48
49
50
51
52
53
54
55
56
57
58
59
60
61
62
63
64
65

DRG explants are not composed entirely of DRG neurons, and the other cells present in the explants are known to be mainly Schwann cells and fibroblasts.^[67] We also examined the ability of the nanofibers to alter the alignment of the longest axis of cells that migrated out of the DRG explant using a previously published image analysis technique.^[68] We found that the nanofibers induced orientation of the longest axis of migrating cell nuclei, with $25 \pm 2\%$, $26 \pm 2\%$, $31 \pm 0.6\%$, and $27 \pm 0.8\%$ of the longest axes within 15° of the median angle of nuclei alignment for PLGA, bpV(HOpic)-PLGA, TrkB aptamer-PLGA, and NGF-PLGA nanofibers, respectively (Fig. 3G). When DRG explants were cultured on PLGA films, a significantly lower percentage ($14 \pm 3\%$) of the longest axes on the migrating cell nuclei were within 15° of the median angle of nuclei alignment. Again, there were fewer migrating cell nuclei with their longest axes between $75\text{--}90^\circ$ of the median angle of alignment compared to DRG explants on films (Fig. 3G). Taken together, these results demonstrate that the orientation of both neurite outgrowth and migrating cell nuclei are uni-axially aligned due to the presentation of the nanofiber topography for all the different hybrid nanofiber scaffolds tested.

We next evaluated the ability of the neurotrophic APIs to enhance neurite extension (**Figure 4**). It should first be pointed out that nanofibers can induce neurite extension even in the absence of a neurotrophic factor. This has been attributed to the topological features of nanofibers, which offer adhesion points and direct the process of neurite elongation along the nanofiber scaffolds.^[69] Such elongation was also observed in the present system, and DRG explants cultured on pure PLGA nanofiber scaffolds (Fig. 4B) showed significantly longer neurite extension compared to those cultured on pure PLGA films (Fig. 4A). Both the range of neurite extension (Fig. 4F), and the average of the 10 longest neurites on each scaffold (Fig. 4H) were larger, consistent with previous reports.^[69]

In order to test if the incorporation of a neurotrophic payload in the nanofibers would further enhance neurite extension, the nanofibers and their nanoparticle delivery vehicles were

1
2
3
4
5
6
7
8
9
10
11
12
13
14
15
16
17
18
19
20
21
22
23
24
25
26
27
28
29
30
31
32
33
34
35
36
37
38
39
40
41
42
43
44
45
46
47
48
49
50
51
52
53
54
55
56
57
58
59
60
61
62
63
64
65

engineered such that each API would reach a steady state concentration *in vitro* that would be effective in enhancing neuronal growth. The inputs to these designs were: culture conditions (2 mg of nanofiber scaffolds, 0.5 mL neurobasal media); the measured release rate of the API (Figure S5, Supporting Information); and the published minimum concentration needed to elicit a therapeutic impact on DRG extension,^[40, 44, 52] which allowed us to calculate estimates of the concentration of API in the DRG cultures for the duration of the culture period (Figure S7, Supporting Information). Importantly, because these concentrations were an estimate using the entire volume of the culture media, DRG explants were potentially exposed to higher local concentrations of the therapeutics due to their proximity to the scaffolds.

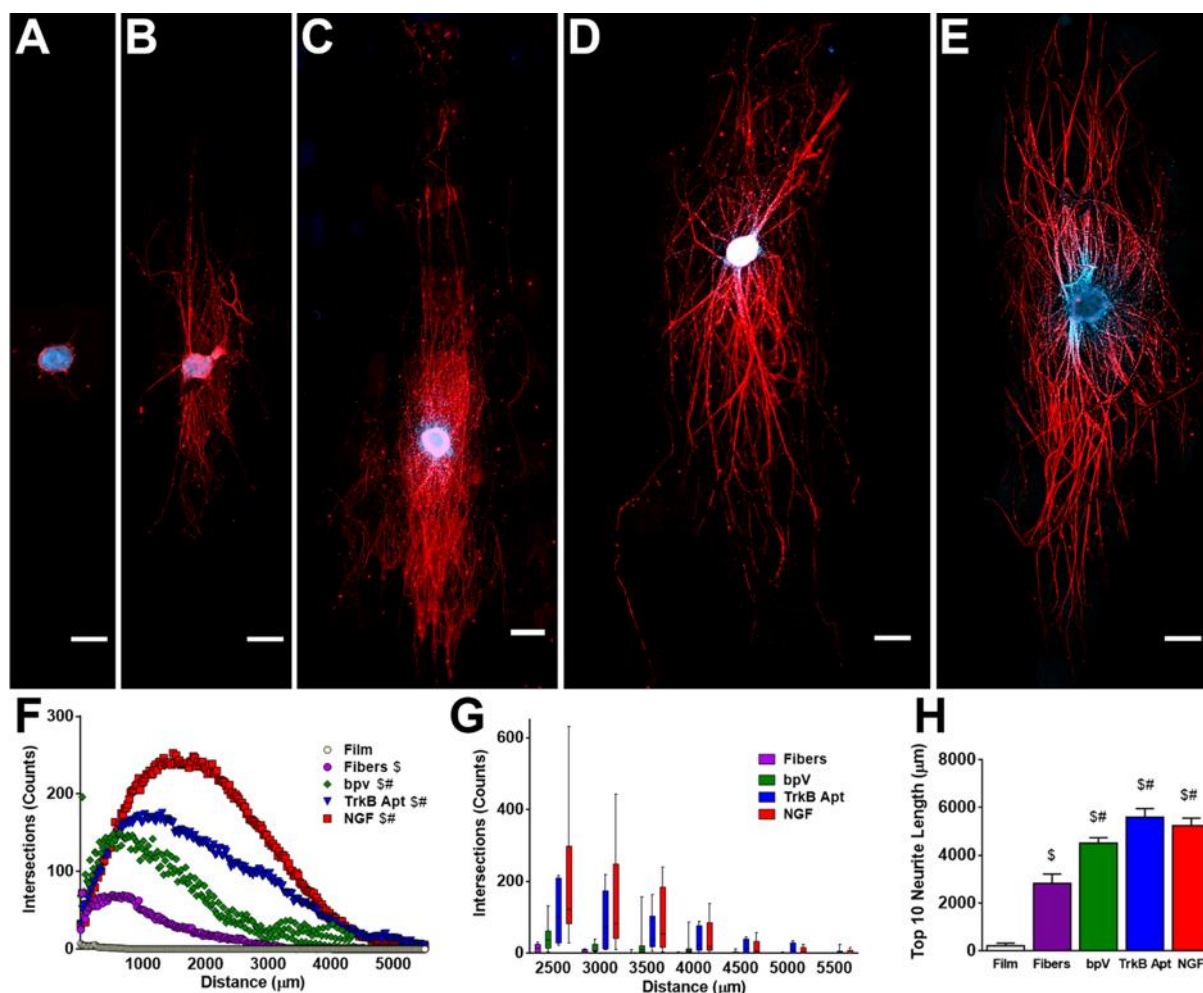


Figure 4. Enhancement of neurite extension induced by release of therapeutics from hybrid PLGA nanofibers. (A-E) DRG explants cultured on (A) PLGA film control, (B) PLGA fiber control, (C) bpV(HOpic)-pSiNP/PLGA nanofiber hybrids, (D) TrkB aptamer-pSiNP/PLGA nanofibers, and (E) NGF-PSiNP/PLGA nanofiber hybrids. (F) Range of neurite extension on each scaffold type. Pure PLGA fibers caused more robust growth of neurite extension from

1 DRG explants compared to PLGA films. The addition of bpV(HOpic)-pSiNPs, TrkB aptamer-
2 pSiNPS, or NGF-pSiNPs further increased the number of neurite intersections over the range
3 of neurite extension. (G) Box and whisker plot of select ranges beyond 2500 μm of neurite
4 extension, showing that few neurite intersections were counted from any PLGA nanofiber
5 scaffold controls at these distances from the DRG explants. (H) Average of the ten longest
6 extending neurites on each scaffold. PLGA fibers alone induced longer neurite extension from
7 DRG explants compared to PLGA films. The addition of bpV(HOpic)-pSiNPs, TrkB aptamer-
8 pSiNPS, or NGF-pSiNPs further increased the length of neurite intersection. Scale Bar = 500
9 μm ; n = 5; \$ = p < 0.05 compared to PLGA film; # = p < 0.05 compared to PLGA fibers.
10
11
12
13

14 A series of control experiments designed to eliminate the possibility that surface
15 chemistry, surface charge, or other factors played a role in enhancement of neurite extension
16 were then performed. We tested PLGA nanofibers containing empty pSiNPs grafted with the
17 same amine surface chemistry used to load bpV(HOpic) but with no small molecule payload
18 (Figure S8, Supporting Information), PLGA nanofibers containing pSiNPs loaded with a
19 control DNA sequence using the same calcium silicate chemistry used to load the aptamer
20 (Figure S9, Supporting Information), and PLGA nanofibers containing pSiNPs that had been
21 loaded with bovine serum albumin (BSA) using the same oxidative trapping procedure used
22 to load the NGF protein (Figure S10, Supporting Information). All of these controls showed
23 no significant difference in the average of the 10 longest neurites or in overall DRG extension
24 as measured by the number of neurites that intersected with radiating outlines of the DRG
25 body at 50 μm intervals from each scaffold. These results showed that the pSiNPs and all of
26 the loading chemistries used in the formulations did not alter neurite extension from DRG
27 explants on nanofiber scaffolds.
28
29
30
31
32
33
34
35
36
37
38
39
40
41
42
43
44
45
46
47

48 The presence of a neurotrophic payload in the nanofiber scaffold substantially
49 enhanced neurite extension relative to pure PLGA nanofibers, for all three of the APIs
50 studied. Neurites extending from DRG cultured on bpV(HOpic)-loaded pSiNP/nanofiber
51 scaffolds (Fig. 4C), TrkB aptamer-loaded pSiNP/nanofiber scaffolds (Fig. 4D), and NGF-
52 loaded pSiNP/nanofiber scaffolds (Fig. 4E) all showed significantly more NF200 stained
53 intersections across the range of distances when compared to pure PLGA nanofiber controls
54
55
56
57
58
59
60
61
62
63
64
65

(Fig. 4B,F) and their respective nanoparticle scaffold controls (Supplemental Figures S8, S9, S10, Supplemental Information). Using a box and whisker plot, distances over 2500 μm were further depicted in 500 μm intervals to demonstrate NF200 counts far from the body of the DRG explant. Few neurite intersections from DRG explants on PLGA nanofibers were seen beyond 3000 μm , whereas neurites extending on all 3 API-releasing nanofibers had intersections out to 4500 μm (Fig. 4G). TrkB aptamer and NGF releasing scaffolds showed neurite intersections even out to 5500 μm .

In order to analyze changes in the extension of the longest neurites, the average length of the 10 longest neurites in each scaffold was determined. The longest neurites extending on bpV(HOpic)-loaded pSiNP/nanofibers averaged $4511 \pm 241 \mu\text{m}$, on TrkB aptamer-loaded pSiNP/nanofibers averaged $5592 \pm 360 \mu\text{m}$, and on NGF-loaded pSiNP/nanofibers averaged $5248 \pm 323 \mu\text{m}$, all of which were significantly longer than the longest neurites extending on control PLGA nanofibers ($2835 \pm 389 \mu\text{m}$) (Figure 4H). Neurites from DRG explants extending on NH_2 pSiNP control nanofibers ($2653 \pm 605 \mu\text{m}$) (Figure S8, Supplemental Information), DNA control pSiNP nanofibers ($3732 \pm 394 \mu\text{m}$) (Figure S9, Supplemental Information), and BSA pSiNP control nanofibers ($3262 \pm 511 \mu\text{m}$) (Figure S10, Supplemental Information), were all significantly shorter than their corresponding API-releasing nanofiber scaffolds, and they showed no difference compared to neurites extending on PLGA nanofiber control scaffolds. These data demonstrate that all three API-releasing nanofibers promote more robust neurite growth as determined by an increase in the number of neurite intersections (Figure 4F), and the length of neurite extension (Figure 4G,H). Importantly, these results verify the retention of activity of all three payloads, showing that each of these drug-loading chemistries is suitable for payload incorporation into polymer nanofibers.

Cellular migration out of the DRG explants was quantified in order to assess how the various hybrid scaffolds changed the growth of Schwann cells and fibroblasts (**Figure 5**). Cells migrating from DRG cultured on bpV(HOpic)-loaded pSiNP/nanofibers (Fig. 5C),

1
2
3
4
5
6
7
8
9
10
11
12
13
14
15
16
17
18
19
20
21
22
23
24
25
26
27
28
29
30
31
32
33
34
35
36
37
38
39
40
41
42
43
44
45
46
47
48
49
50
51
52
53
54
55
56
57
58
59
60
61
62
63
64
65

TrkB aptamer-loaded pSiNP/nanofibers (Fig. 5D), and NGF-loaded pSiNP/nanofibers (Fig. 5E) all showed significantly more Hoechst stained intersections across the range of distances when compared to PLGA nanofiber and film controls (Figure 5B,F), as well as their respective nanoparticle scaffold controls (Supplemental Figure S11, S12, S13, Supplemental Information). This signifies that there were generally more cells migrating out of the DRG explants in the presence of the three APIs. We then looked at the average length of the cells that migrated farthest from each DRG explant. The farthest cells migrated 2794 ± 174 μm on bpV(HOpic)-loaded pSiNP/nanofibers, 4290 ± 764 μm on TrkB aptamer-loaded pSiNP/nanofibers, and 3847 ± 347 μm on NGF-loaded pSiNP/nanofibers (Fig. 5G). Cells migrated significantly farther on TrkB aptamer and NGF-loaded pSiNP/nanofiber scaffolds compared to PLGA nanofiber controls (1867 ± 195 μm) (Fig. 5B,G), the DNA-pSiNP control nanofibers (1968 ± 172 μm) (Figure S12, Supplemental Information), and BSA-pSiNP control nanofibers (2668 ± 563 μm) (Figure S13, Supplemental Information). However, no statistically significant differences were seen between bpV(HOpic)-loaded pSiNP/nanofibers and PLGA controls or NH_2 -pSiNP control nanofibers (1967 ± 22 μm) (Figure S11, Supplemental Information). Previously, inhibition of PTEN was shown to increase fibroblast cellular migration.^[70] While the bpV(HOpic) results here show that cells are not migrating significantly farther than DRG explants on control scaffolds, more cells are migrating out of the DRG explants on bpV(HOpic) scaffolds demonstrating mobilization of cells from the DRG explants (Figure 5F,G).

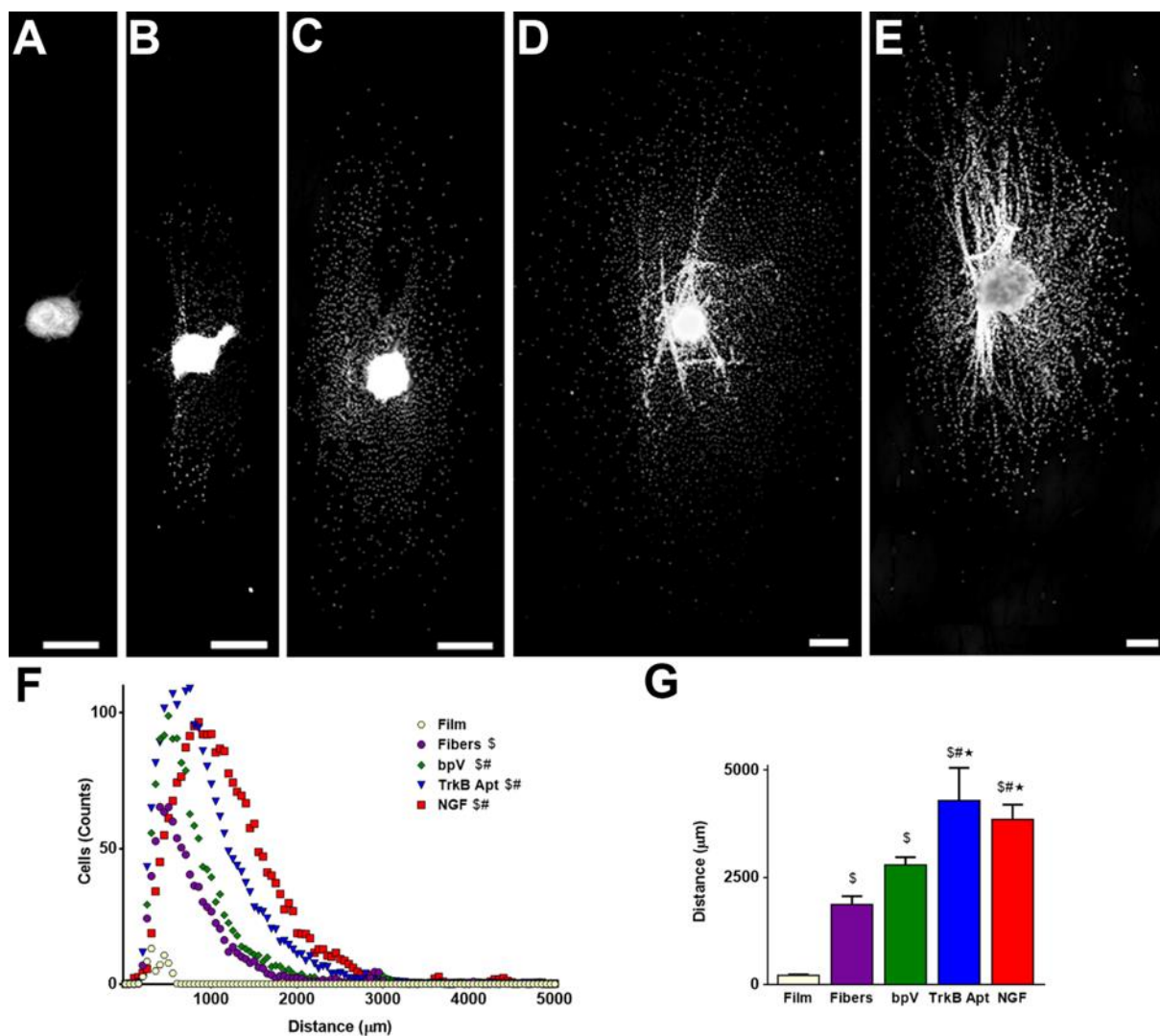


Figure 5. Increase in neurite migration induced on hybrid PLGA nanofibers. (A-E) Hoechst stained DRG explants cultured on (A) pure PLGA film control, (B) pure PLGA fiber control, (C) bpV(HOpic)-pSiNP/PLGA nanofiber hybrids, (D) TrkB Aptamer-pSiNP/PLGA nanofibers, and (E) NGF-PSiNP/PLGA nanofiber hybrids. (F) Range of cellular migration from DRG explants on each scaffold type. Pure PLGA fibers showed more counts of cellular migration from DRG explants compared to pure PLGA films. Scaffolds containing bpV(HOpic)-pSiNPs, TrkB aptamer-pSiNPs, or NGF-pSiNPs showed further increase in the number of nuclei intersections over the range of cellular migration. (G) Average of the ten farthest migrating nuclei on each scaffold. PLGA fibers alone induced more extensive cellular migration from DRG explants compared to PLGA films. Scaffolds containing TrkB aptamer-pSiNPs or NGF-pSiNPs, but not bpV(HOpic)-pSiNPs, further increased the distance of cellular migration compared to pure PLGA fibers. Scale Bar = 500 μm ; n = 5; \$ = p < 0.05 compared to PLGA film; # = p < 0.05 compared to PLGA fibers; * = p < 0.05 compared to bpV(HOpic)-pSiNP/PLGA nanofiber hybrids.

This work provides one solution to the problem of formulating and delivering therapeutic agents in conventional biocompatible/biodegradable polymers by incorporating

1 porous silicon nanoparticles (pSiNPs) that are pre-loaded with the therapeutic into the
2 polymer scaffold during fabrication. The pSiNPs were loaded with three classes of
3
4 compounds: a highly water-soluble small molecule, a nucleic acid construct (RNA aptamer),
5
6 and a protein. The three molecules allowed the evaluation of three distinct pSiNP loading
7
8 chemistries, and the ability of these chemistries to control payload release profiles from
9
10 PLGA nanofibers. We found that the nanofiber topography directs the growth of cells and
11
12 extending neurites in a DRG explant culture system, and that the small molecule drug, the
13
14 RNA aptamer, and the protein growth factor all retained their function and were able to
15
16 enhance DRG explant neurite extension when formulated with the pSiNP/PLGA nanofiber
17
18 system. Additionally, this work represents the first example of release of an RNA aptamer
19
20 from polymer nanofibers to enhance neurite extension. The ultimate goal of these studies was
21
22 to develop implantable scaffolds that incorporate slow release of therapeutic agents to
23
24 enhance nerve repair after traumatic injury. This study demonstrates a versatile, modular
25
26 approach to deliver a variety of therapeutic payloads from polymer scaffolds for such an
27
28 application; the approach may also be applicable to other tissue engineering problems.
29
30
31
32
33
34
35
36
37
38

39 **Supporting Information**

40 Supporting Information is available from the Wiley Online Library or from the author.
41

42 **Acknowledgements**

43 JMZ and CMD contributed equally to this work. The authors thank Dr. Kendell Pawelec and
44 Prof. Jeff Sakamoto for helpful discussions regarding this research. This study was supported
45 by the National Science Foundation under Grant No. CBET-1603177 (MJS), and *in vitro*
46 DRG studies were supported in part by the National Institutes of Health under Grant No.
47 NIBIB-RO1-EB005678 (LDS). Transmission electron micrographs were obtained in the
48 Cellular and Molecular Medicine Electron microscopy core facility, which is supported in part
49 by National Institutes of Health Award number S10OD023527. This work was performed in
50 part at the San Diego Nanotechnology Infrastructure (SDNI) of UCSD, a member of the
51 National Nanotechnology Coordinated Infrastructure, which is supported by the National
52 Science Foundation (Grant ECCS-1542148). This project received funding from the European
53 Union's Horizon 2020 research and innovation program under the Marie Skłodowska-Curie
54 grant agreement No 704120 ("MIRNANO"). Dr. AB is a Global Marie Skłodowska-Curie
55 Fellow. Dr. JK acknowledges financial support from the UCSD Frontiers of Innovation
56 Scholars Program (FISP) fellowship. JW thanks the NIH for the predoctoral training grant
57 2T32CA1539106A1 (CRIN).
58
59
60
61
62
63
64
65

Conflict Disclosure

MJS holds an appointment as a “High-Level Talent” at the Key Laboratory of Organosilicon Chemistry and Material Technology of Hangzhou Normal University, China, he is a Guest Professor at Zhejiang University, China, and he is a scientific founder of Spinnaker Biosciences, Inc., a member of the Board of Directors, and has an equity interest in the company. Although one or more of the grants that supported this research has been identified for conflict of interest management based on the overall scope of the project and its potential benefit to Spinnaker Biosciences, Inc., the research findings included in this particular publication may not necessarily relate to the interests of Spinnaker Biosciences, Inc. The terms of this arrangement have been reviewed and approved by the University of California, San Diego in accordance with its conflict of interest policies.

Received: ((will be filled in by the editorial staff))

Revised: ((will be filled in by the editorial staff))

Published online: ((will be filled in by the editorial staff))

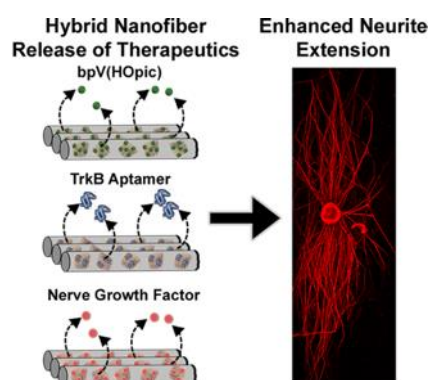
References

- [1] J. W. Xie, S. M. Willerth, X. R. Li, M. R. Macewan, A. Rader, S. E. Sakiyama-Elbert, Y. N. Xia, *Biomaterials* **2009**, *30*, 354.
- [2] F. Yang, R. Murugan, S. Wang, S. Ramakrishna, *Biomaterials* **2005**, *26*, 2603.
- [3] X. H. Zong, H. Bien, C. Y. Chung, L. H. Yin, D. F. Fang, B. S. Hsiao, B. Chu, E. Entcheva, *Biomaterials* **2005**, *26*, 5330.
- [4] S. Lee, M. K. Leach, S. A. Redmond, S. Y. C. Chong, S. H. Mellon, S. J. Tuck, Z. Q. Feng, J. M. Corey, J. R. Chan, *Nat. Methods* **2012**, *9*, 917.
- [5] G. C. Ingavle, J. K. Leach, *Tissue Eng. Part B Rev.* **2014**, *20*, 277.
- [6] L. E. Sperling, K. P. Reis, P. Pranke, J. H. Wendorff, *Drug Discov. Today* **2016**, *21*, 1243.
- [7] D. Kai, M. J. Tan, M. P. Prabhakaran, B. Q. Y. Chan, S. S. Liow, S. Ramakrishna, X. J. Loh, *Colloid Surf. B* **2016**, *148*, 557.
- [8] M. K. Smith, V. Singh, K. Kalaitzidou, B. A. Cola, *ACS Appl. Mater. Interfaces* **2016**, *8*, 14788.
- [9] M. L. Chen, Y. F. Li, F. Besenbacher, *Adv. Healthc. Mater.* **2014**, *3*, 1721.
- [10] X. L. Lin, D. Y. Tang, H. F. Du, *J. Pharm. Pharmacol.* **2013**, *65*, 673.
- [11] M. S. Lee, T. Ahmad, J. Lee, H. K. Awada, Y. D. Wang, K. Kim, H. Shin, H. S. Yang, *Biomaterials* **2017**, *124*, 65.
- [12] T. Briggs, T. L. Arinzeh, *J. Biomed. Mater. Res. A* **2014**, *102*, 674.
- [13] X. Q. Li, Y. Su, S. P. Liu, L. J. Tan, X. M. Mo, S. Ramakrishna, *Colloid Surf. B* **2010**, *75*, 418.
- [14] G. Yazgan, A. M. Popa, R. M. Rossi, K. Maniura-Weber, J. Puigmarti-Luis, D. Crespy, G. Fortunato, *Polymer* **2015**, *66*, 268.
- [15] H. L. Jiang, L. Q. Wang, K. J. Zhu, *J. Control. Release* **2014**, *193*, 296.
- [16] Y. Su, Q. Q. Su, W. Liu, M. Lim, J. R. Venugopal, X. M. Mo, S. Ramakrishna, S. S. Al-Deyab, M. El-Newehy, *Acta Biomater.* **2012**, *8*, 763.
- [17] C. Yang, D. G. Yu, D. Pan, X. K. Liu, X. Wang, S. W. A. Bligh, G. R. Williams, *Acta Biomater.* **2016**, *35*, 77.
- [18] D. Han, S. Sherman, S. Filocamo, A. J. Steckl, *Acta Biomater.* **2017**, *53*, 242.
- [19] Y. Yang, T. Xia, W. Zhi, L. Wei, J. Weng, C. Zhang, X. H. Li, *Biomaterials* **2011**, *32*, 4243.

- [20] D. Han, A. J. Steckl, *ACS Appl. Mater. Inter.* **2013**, *5*, 8241.
- [21] M. L. Chen, S. Gao, M. D. Dong, J. Song, C. X. Yang, K. A. Howard, J. Kjems, F. Besenbacher, *ACS Nano* **2012**, *6*, 4835.
- [22] M. Ke, J. A. Wahab, B. Hyunsik, K. H. Song, J. S. Lee, M. Gopiraman, I. S. Kim, *RSC Adv.* **2016**, *6*, 4593.
- [23] K. X. Qiu, C. L. He, W. Feng, W. Z. Wang, X. J. Zhou, Z. Q. Yin, L. Chen, H. S. Wang, X. M. Mo, *J Mater Chem B* **2013**, *1*, 4601.
- [24] S. Kashanian, F. Harding, Y. Irani, S. Klebe, K. Marshall, A. Loni, L. Canham, D. Fan, K. A. Williams, N. H. Voelcker, J. L. Coffey, *Acta Biomater.* **2010**, *6*, 3566.
- [25] D. Fan, G. R. Akkaraju, E. F. Couch, L. T. Canham, J. L. Coffey, *Nanoscale* **2011**, *3*, 354.
- [26] S. J. P. McInnes, T. J. Macdonald, I. P. Parkin, T. Nann, N. H. Voelcker, *Nanomaterials* **2018**, *8*, 205.
- [27] J. M. Zuidema, T. Kumeria, D. Kim, J. Y. Kang, J. A. N. Wang, G. Hollett, X. Zhang, D. S. Roberts, N. Chan, C. Dowling, E. Blanco-Suarez, N. J. Allen, M. H. Tuszynski, M. J. Sailor, *Adv. Mater.* **2018**, *30*, 1706785.
- [28] J.-H. Park, L. Gu, G. v. Maltzahn, E. Ruoslahti, S. N. Bhatia, M. J. Sailor, *Nat. Mater.* **2009**, *8*, 331.
- [29] S. P. Low, N. H. Voelcker, L. T. Canham, K. A. Williams, *Biomaterials* **2009**, *30*, 2873.
- [30] A. G. Cullis, L. T. Canham, *Nature* **1991**, *353*, 335.
- [31] R. A. Bley, S. M. Kauzlarich, J. E. Davis, H. W. H. Lee, *Chem. Mat.* **1996**, *8*, 1881.
- [32] C. F. Wang, M. P. Sarparanta, E. M. Makila, M. L. K. Hyvonen, P. M. Laakkonen, J. J. Salonen, J. T. Hirvonen, A. J. Airaksinen, H. A. Santos, *Biomaterials* **2015**, *48*, 108.
- [33] E. Secret, K. Smith, V. Dubljevic, E. Moore, P. Macardle, B. Delalat, M. L. Rogers, T. G. Johns, J. O. Durand, F. Cunin, N. H. Voelcker, *Adv. Healthc. Mater.* **2013**, *2*, 718.
- [34] E. Tasciotti, X. W. Liu, R. Bhavane, K. Plant, A. D. Leonard, B. K. Price, M. M. C. Cheng, P. Decuzzi, J. M. Tour, F. Robertson, M. Ferrari, *Nat. Nanotechnol.* **2008**, *3*, 151.
- [35] K. R. Beavers, T. A. Werfel, T. W. Shen, T. E. Kavanaugh, K. V. Kilchrist, J. W. Mares, J. S. Fain, C. B. Wiese, K. C. Vickers, S. M. Weiss, C. L. Duvall, *Adv. Mater.* **2016**, *28*, 7984.
- [36] E. J. Anglin, M. P. Schwartz, V. P. Ng, L. A. Perelman, M. J. Sailor, *Langmuir* **2004**, *20*, 11264.
- [37] A. Cifuentes-Rius, A. Ivask, E. Sporleder, I. Kaur, Y. Assan, S. Rao, D. Warther, C. A. Prestidge, J. O. Durand, N. H. Voelcker, *Small* **2017**, *13*, 1701201.
- [38] M. A. Shahbazi, P. V. Almeida, A. Correia, B. Herranz-Blanco, N. Shrestha, E. Makila, J. Salonen, J. Hirvonen, H. A. Santos, *J. Control. Release* **2017**, *249*, 111.
- [39] E. J. Kwon, M. Skalak, A. Bertucci, G. Braun, F. Ricci, E. Ruoslahti, M. J. Sailor, S. N. Bhatia, *Adv. Mater.* **2017**, *29*, 1701527.
- [40] K. J. Christie, C. A. Webber, J. A. Martinez, B. Singh, D. W. Zochodne, *J. Neurosci.* **2010**, *30*, 9306.
- [41] M. S. Kim, A. El-Fiqi, J. W. Kim, H. S. Ahn, H. Kim, Y. J. Son, H. W. Kim, J. K. Hyun, *ACS Appl. Mater. Inter.* **2016**, *8*, 18741.
- [42] A. D. Keefe, S. Pai, A. Ellington, *Nat. Rev. Drug Discov.* **2010**, *9*, 537.
- [43] A. H. Nagahara, M. H. Tuszynski, *Nat. Rev. Drug Discov.* **2011**, *10*, 209.
- [44] Y. Z. Huang, F. J. Hernandez, B. Gu, K. R. Stockdale, K. Nanapaneni, T. E. Scheetz, M. A. Behlke, A. S. Peek, T. Bair, P. H. Giangrande, J. O. McNamara, *Mol. Pharm.* **2012**, *82*, 623.
- [45] M. V. Sofroniew, C. L. Howe, W. C. Mobley, *Annu. Rev. Neurosci.* **2001**, *24*, 1217.
- [46] R. W. Gundersen, J. N. Barrett, *Science* **1979**, *206*, 1079.

- 1 [47] A. Baron-Van Evercooren, H. K. Kleinman, S. Ohno, P. Marangos, J. P. Schwartz, M.
2 E. Dubois-Dalcq, *J. Neurosci. Res.* **1982**, *8*, 179.
- 3 [48] X. J. Yu, G. P. Dillon, R. V. Bellamkonda, *Tissue Eng.* **1999**, *5*, 291.
- 4 [49] Z. Qin, J. Joo, L. Gu, M. J. Sailor, *Part. Part. Syst. Charact.* **2014**, *31*, 252.
- 5 [50] D. Kim, J. M. Zuidema, J. Kang, Y. Pan, L. Wu, D. Warther, B. Arkles, M. J. Sailor,
6 *J. Am. Chem. Soc.* **2016**, *138*, 15106.
- 7 [51] J. Kang, J. Joo, E. J. Kwon, M. Skalak, S. Hussain, Z. G. She, E. Ruoslahti, S. N.
8 Bhatia, M. J. Sailor, *Adv. Mater.* **2016**, *28*, 7962.
- 9 [52] L. Mohiuddin, K. Fernandez, D. R. Tomlinson, P. Fernyhough, *Neurosci. Lett.* **1995**,
10 *185*, 20.
- 11 [53] M. J. Sailor, E. C. Wu, *Adv. Funct. Mater.* **2009**, *19*, 3195.
- 12 [54] J. Wang, T. Kumeria, M. T. Bezem, J. Wang, M. J. Sailor, *ACS Appl. Mater. Inter.*
13 **2018**, *10*, 3200.
- 14 [55] D. Kim, J. Kang, T. Wang, H. G. Ryu, J. M. Zuidema, J. Joo, M. Kim, Y. Huh, J.
15 Jung, K. H. Ahn, K. H. Kim, M. J. Sailor, *Adv. Mater.* **2017**, *29*, 1703309.
- 16 [56] J. Joo, X. Liu, V. R. Kotamraju, E. Ruoslahti, Y. Nam, M. J. Sailor, *ACS Nano* **2015**,
17 *9*, 6233.
- 18 [57] L. Gu, D. J. Hall, Z. Qin, E. Anglin, J. Joo, D. J. Mooney, S. B. Howell, M. J. Sailor,
19 *Nat. Commun.* **2013**, *4*, 2326.
- 20 [58] J. Joo, J. F. Cruz, S. Vijayakumar, J. Grondek, M. J. Sailor, *Adv. Funct. Mater.* **2014**,
21 *24*, 5688.
- 22 [59] J. Salonen, L. Laitinen, A. M. Kaukonen, J. Tuura, M. Bjorkqvist, T. Heikkila, K.
23 Vaha-Heikkila, J. Hirvonen, V. P. Lehto, *J. Control. Release* **2005**, *108*, 362.
- 24 [60] S. Hussain, J. Joo, J. Kang, B. Kim, G. B. Braun, Z. G. She, D. Kim, A. P. Mann, T.
25 Molder, T. Teesalu, S. Carnazza, S. Guglielmino, M. J. Sailor, E. Ruoslahti, *Nat.*
26 *Biomed. Eng.* **2018**, *2*, 95.
- 27 [61] F. von Burkersroda, L. Schedl, A. Gopferich, *Biomaterials* **2002**, *23*, 4221.
- 28 [62] H. J. Shin, C. H. Lee, I. H. Cho, Y. J. Kim, Y. J. Lee, I. A. Kim, K. D. Park, N. Yui, J.
29 W. Shin, *J. Biomat. Sci-Polym. E* **2006**, *17*, 103.
- 30 [63] X. J. Xin, M. Hussain, J. J. Mao, *Biomaterials* **2007**, *28*, 316.
- 31 [64] C. M. Dumont, M. A. Carlson, M. K. Munsell, A. J. Ciciriello, K. Strnadova, J. Park,
32 B. J. Cummings, A. J. Anderson, L. D. Shea, *Acta Biomater.* **2019**, *86*, 312.
- 33 [65] J. Koffler, W. Zhu, X. Qu, O. Platoshyn, J. N. Dulin, J. Brock, L. Graham, P. Lu, J.
34 Sakamoto, M. Marsala, S. C. Chen, M. H. Tuszynski, *Nat. Med.* **2019**, *25*, 263.
- 35 [66] K. M. Pawelec, J. Koffler, D. Shahriari, A. Galvan, M. H. Tuszynski, J. Sakamoto,
36 *Biomed. Mater.* **2018**, *13*, 044104.
- 37 [67] P. Almqvist, H. Pschera, E. B. Samuelsson, N. O. Lunell, A. Seiger, *Exp. Neurol.*
38 **1994**, *125*, 1.
- 39 [68] J. M. Zuidema, M. C. Hyzinski-Garcia, K. Van Vlasselaer, N. W. Zaccor, G. E.
40 Plopper, A. A. Mongin, R. J. Gilbert, *Biomaterials* **2014**, *35*, 1439.
- 41 [69] A. Hurtado, J. M. Cregg, H. B. Wang, D. F. Wendell, M. Oudega, R. J. Gilbert, J. W.
42 McDonald, *Biomaterials* **2011**, *32*, 6068.
- 43 [70] M. Tamura, J. G. Gu, K. Matsumoto, S. Aota, R. Parsons, K. M. Yamada, *Science*
44 **1998**, *280*, 1614.
- 45
46
47
48
49
50
51
52
53
54
55
56
57
58
59
60
61
62
63
64
65

TOC



Porous silicon nanoparticles are loaded with bpV(HOpic), a TrkB RNA aptamer, or nerve growth factor using three distinct loading chemistries. They are incorporated into aligned poly(lactic-*co*-glycolic acid) nanofibers using an airbrush, and the nanofiber hybrids release their payloads over varying timescales. The three released payloads maintain their bioactivity as shown by enhanced neurite extension of dorsal root ganglion explants cultured on the hybrid nanofiber scaffolds.

Keywords: neuron guidance; tissue engineering; controlled release; PTEN inhibitor; RNA aptamer; tropomyosin-related kinase receptor type B; Nerve Growth Factor

*Jonathan M. Zuidema, Courtney M. Dumont, Joanna Wang, Wyndham M. Batchelor, Yi-Sheng Lu, Jinyoung Kang, Alessandro Bertucci, Noel M. Ziebarth, Lonnie D. Shea, and Michael J. Sailor**

Porous Silicon Nanoparticles Embedded in Poly(lactic-*co*-glycolic acid) Nanofiber Scaffolds Deliver Neurotrophic Payloads to Enhance Neuronal Growth

Copyright WILEY-VCH Verlag GmbH & Co. KGaA, 69469 Weinheim, Germany, 2018.



Click here to access/download
Supporting Information
Triple_Release_SI_v12.pdf



Porous Silicon Nanoparticles Embedded in Poly(lactic-co-glycolic acid) Nanofiber Scaffolds Deliver Neurotrophic Payloads to Enhance Neuronal Growth

*Jonathan M. Zuidema, Courtney M. Dumont, Joanna Wang, Wyndham M. Batchelor, Yi-Sheng Lu, Jinyoung Kang, Alessandro Bertucci, Noel M. Ziebarth, Lonnie D. Shea, and Michael J. Sailor**

Dr. J.M. Zuidema, Dr. A. Bertucci, Prof.
M. J. Sailor

Department of Chemistry and
Biochemistry
University of California San Diego
9500 Gilman Drive
La Jolla, CA 92093, USA

E-mail: msailor@ucsd.edu

Prof. C.M. Dumont

Department of Biomedical Engineering

University of Miami

1251 Memorial Drive

Coral Gables, FL 33146, USA

Prof. C.M. Dumont

John T. Macdonald Foundation

Biomedical Nanotechnology Institute

University of Miami

1951 NW 7th Avenue

Miami, FL 33136, USA

J. Wang, Y. Lu

Materials Science and Engineering

University of California San Diego

9500 Gilman Drive

La Jolla, CA 92093, USA

Prof. N.M. Ziebarth, W.M. Batchelor

Department of Biomedical Engineering

University of Miami

1251 Memorial Drive

Dr. J. Kang

Department of Nanoengineering

University of California San Diego

9500 Gilman Drive

La Jolla, CA 92093, CA

Dr. A. Bertucci

Department of Chemical Sciences and

Technologies

University of Rome Tor Vergata

Via della Ricerca Scientifica 1

00133 Rome, Italy

Prof. L.D. Shea

Department of Biomedical Engineering

University of Michigan

2200 Bonisteel Boulevard

Ann Arbor, MI 48109, USA

Prof. L.D. Shea

Department of Chemical Engineering

University of Michigan

2200 Bonisteel Boulevard

Ann Arbor, MI 48109, USA

Keywords: neuron guidance; tissue engineering; controlled release; PTEN inhibitor; RNAaptamer; tropomyosin-related kinase receptor type B; Nerve Growth Factor

Abstract

Scaffolds made from biocompatible polymers provide physical cues to direct the extension of neurites and to encourage repair of damaged nerves. The inclusion of neurotrophic payloads in these scaffolds can substantially enhance regrowth and repair processes. However, many promising neurotrophic candidates are excluded from this approach due to incompatibilities with the polymer or with the polymer processing conditions. This work provides one solution to this problem by incorporating porous silicon nanoparticles (pSiNPs) that are pre-loaded with the therapeutic into a polymer scaffold during fabrication. The nanoparticle-drug-polymer hybrids are prepared in the form of oriented poly(lactic-co-glycolic acid) nanofiber scaffolds. We test three different therapeutic payloads: bpV(HOpic), a small molecule inhibitor of phosphatase and tensin homolog (PTEN); an RNA aptamer specific to tropomyosin-related kinase receptor type B (TrkB); and the protein nerve growth factor (NGF). Each therapeutic is loaded using a loading chemistry that is optimized to slow the rate of release of these water-soluble payloads. The drug-loaded pSiNP-nanofiber hybrids release approximately half of their TrkB aptamer, bpV(HOpic), or NGF payload in 2, 10, and >40 days, respectively. The nanofiber hybrids increase neurite extension relative to drug-free control nanofibers in a dorsal root ganglion explant assay.

Polymer nanofibers are used in numerous tissue engineering, regenerative medicine, and *in vitro* applications due to the ease of their fabrication and their obvious morphological and functional topographical influences on stem cell differentiation,^[1] neuron guidance,^[2] cardiomyocyte contractility,^[3] oligodendrocyte myelination,^[4] and many other cellular processes. However, polymer nanofibers have yet to demonstrate utility in the clinic^[5-6], and the limitations of polymer nanofiber interventions relying solely on topographical structures for their therapeutic impact have driven a push to imbue nanofibers with additional beneficial properties.^[7-9] Of these, tunable drug release is emerging as a necessary component for state-of-the-art tissue engineering scaffolds. While many different fabrication techniques have been devised, these methods still do not allow for the creation of nanofibers that can be readily modified to release distinct types of drugs at tunable rates.

There are now many approaches to incorporate active pharmaceutical ingredients (APIs) into polymer nanofibers. Because organic solvents are used in the preparation of most polymer scaffolds of interest, hydrophobic drugs can be dispersed throughout polymer nanofibers by simply adding them to the organic solvent during fabrication.^[10] For

hydrophilic drugs or sensitive biologics, which typically are not compatible with organic solvents, other approaches are required. One relatively simple method is to coat or conjugate the drug to the surface of the polymer nanofibers, although this generally leads to a rapid (burst) release of drug from the scaffold over the course of a few hours to a few days.^[11] Emulsion electrospinning has been used to disperse biologics throughout the polymer matrix, which results in a relatively quick release profile of the incorporated payload (days).^[12-14] Co-axial/tri-axial electrospinning produces core-shell nanofibers and affords more control over the fabrication process and drug release profiles.^[15-20] These techniques have been used to generate materials that release sensitive biologics over varying time scales (hours to weeks). However, throughput is low because fabrication parameters must be optimized for each new drug to ensure consistency of the fibers produced.

Hybrid polymer scaffolds that contain drug-loaded nanoparticles dispersed throughout the polymer nanofiber matrix have demonstrated the ability to hold and slowly release hydrophilic drugs in their active forms. For example, chitosan nanoparticles, loaded with nucleic acid therapeutics and incorporated into an electrospinning solution, have been shown to form nanofiber composites that release active RNA over multiple weeks.^[21] Similarly, silica nanoparticles loaded with hydrophilic small molecules and incorporated into polymer nanofibers displayed release from hours to multiple days.^[22-23] Most relevant to the present study, porous silicon particles have been incorporated into polymer fibers for tissue engineering applications,^[24-26] including hybrid nanofibers that incorporated lysozyme-loaded porous silicon nanoparticles (pSiNPs) into polycaprolactone (PCL) nanofibers.^[27] Fabricated using a spray nebulization method rather than electrospinning, these latter pSiNP-PCL nanofibers exhibited uniaxial orientation and they released active protein (lysozyme) over 8 weeks. Attractive features of pSiNPs in this context include their low toxicity, degradability,^[28-29] intrinsic photoluminescent properties,^[30-31] high drug loading capacity,^[32-34] and a set of chemistries that tolerate various classes of drugs and biologics.^[35-39]

While the prior work demonstrated the potential for tissue engineering applications using a surrogate protein, the ability of hybrid pSiNP-polymer systems to deliver an API that can impact a real biological response (e.g., tissue growth) has not been established. Here we report the effective delivery of three different neurotrophic agents: the small molecule bpV(HOpic) which is an inhibitor of phosphatase and tensin homolog (PTEN); an RNA aptamer that binds to tropomyosin-related kinase receptor type B (TrkB); and the protein nerve growth factor (NGF). We quantify the release rates of each of these agents from polymer/pSiNP nanofiber hybrids, using poly(lactic-*co*-glycolic acid) (PLGA) as the polymer scaffold. We demonstrate the bioactivity of the released payloads using a dorsal root ganglion (DRG) neurite extension assay. We find that all three API formulations demonstrate guidance of DRG explant neurite outgrowth and enhancement of DRG neurite extension relative to control polymer/pSiNP nanofibers that contain no API. This work represents the first time pSiNP/PLGA nanofiber hybrids have been used to deliver neurotrophic factors to enhance neurite extension—a critically important biological process needed to effect repair of traumatically injured nerves.

The three different payloads were chosen for loading into pSiNPs based on their known ability to enhance neurite extension when administered as free molecules. The small molecule bpV(HOpic) is an inhibitor of PTEN, and PTEN inhibition has previously been shown to increase neurite outgrowth.^[40-41] RNA aptamers are single stranded oligonucleotides that fold into defined secondary structures and bind to their targets, such as proteins and cell surface receptors.^[42] Activation of the transmembrane receptor, TrkB, leads to the expression of the extracellular signal-regulated kinases (ERK) and mitogen-activated protein kinase kinases (MEK) signaling pathway, which is implicated in sustaining neurite outgrowth.^[43] RNA aptamers have been designed that function as ligands for the TrkB receptor, and these aptamers lead to increased neuronal survival in culture and improved functional outcomes in seizure animal models.^[44] Nerve growth factor (NGF) is part of the neurotrophin family of

molecules, and it binds with high affinity to the transmembrane receptor TrkA, signaling through a similar MEK-ERK pathway as TrkB activation.^[45] Many studies have shown the ability of free NGF to increase neurite extension.^[46-48] Because of differences in size, shape, and electrostatic charge of the three APIs, three distinct chemistries were used to load them into pSiNPs (**Figure 1**).

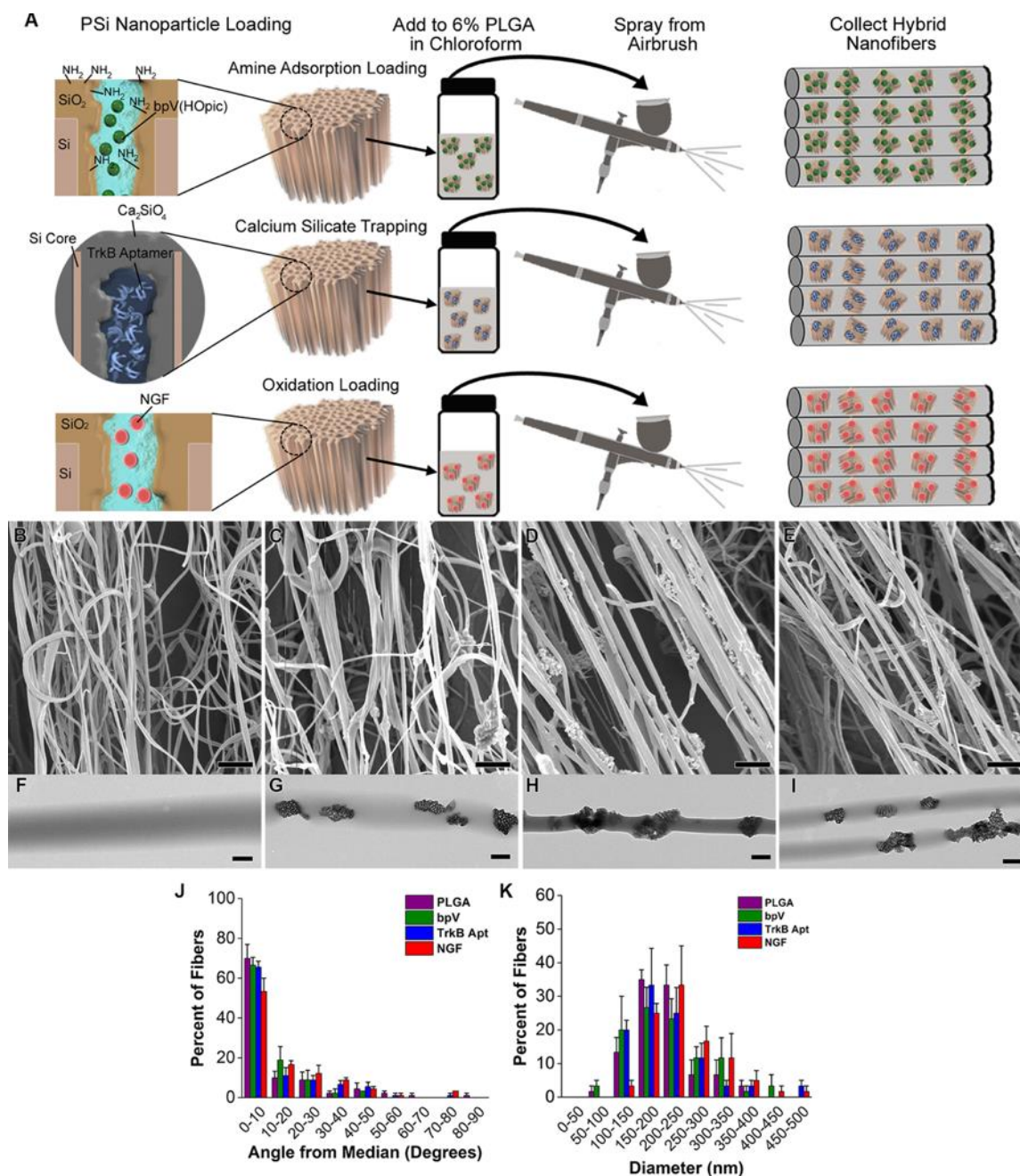


Figure 1. Preparation of drug-loaded pSiNP/PLGA nanofiber scaffolds. (A) Schematic depicting chemistries used to load each drug: “Amine Adsorption Loading” (top) involves pSiNPs whose inner pore walls have been grafted to a primary amine that binds the small molecule drug bpV(HOpic) via electrostatic interactions; “Calcium Silicate Trapping”

(middle) involves condensation of the highly negatively charged TrkB aptamer in a calcium silicate matrix contained within the pSiNPs; and “Oxidation Loading” (bottom) involves mild oxidation of the silicon skeleton on the pSiNPs that physically traps the NGF protein within the nanostructure. The relevant particle type is then loaded into a chloroform solution of PLGA and the nanofiber scaffolds are generated by spray nebulization through an airbrush. (B-E) SEM images of (B) PLGA nanofiber controls, (C) bpV(HOpic)-pSiNP/PLGA nanofiber hybrids, (D) TrkB aptamer-pSiNP/PLGA nanofiber hybrids, and (E) NGF-pSiNP/PLGA nanofiber hybrids. (F-I) TEM images of (F) PLGA nanofiber controls, (G) bpV(HOpic)-pSiNP/PLGA nanofiber hybrids, (H) TrkB aptamer-pSiNP/PLGA nanofiber hybrids, and (I) NGF-pSiNP/PLGA nanofiber hybrids. (J) Degree of alignment of nanofibers calculated by measuring the angle of individual fibers relative to the median angle of alignment. All fiber types show similar, uniaxial alignment ($n=3$). (K) Diameter of nanofibers calculated by measuring the diameter of 30 fibers in each image. Similar diameter ranges are seen between all groups ($n=3$).

The pSiNP carriers were prepared in a similar fashion for all APIs, following the previously reported “perforation etching” procedure.^[49] Briefly, the process involved electrochemical anodization of single crystal silicon to generate a stratified porous silicon layer, removal of the porous layer and creation of the pSiNPs *via* ultrasonic fracture. As-prepared pSiNPs (prior to drug loading) displayed mean diameters of 187 ± 3 nm, zeta potential of -45 ± 1 mV, nominal porosity of $47 \pm 3\%$, and pore diameters ranging from 10-20 nm (Figure S1 and Table S1, Supplementary Information). Each API was then loaded into the pSiNPs using chemistries specifically suited to its particular molecular class.

The small molecule drug bpV(HOpic) was loaded *via* an electrostatic adsorption process. Due to the net negative charge of bpV(HOpic), the inner pore walls of the pSiNPs were first chemically modified to display a positive surface charge. The chemistry involved a ring-opening click-reaction of the cyclic diazasilane 2,2-dimethoxy-1,6-diaza-2-silacyclooctane, which generates a primary amine at the surface of the pSiNPs.^[50] Zeta potential measurement (35 ± 5 mV) confirmed the positive surface charge. These amine-functionalized pSiNPs were then loaded with bpV(HOpic) from deionized (DI) water to a mass loading of $16 \pm 1\%$, which resulted in a reduction of the zeta potential to 4 ± 2 mV. The bpV(HOpic)-loaded pSiNPs displayed an average size (by dynamic light scattering, DLS) of 262 ± 1 nm.

The TrkB aptamer was loaded into as-etched pSiNPs *via* a calcium silicate condensation chemistry previously described.^[51] Because the process employs high concentrations of Ca (II) ions, this chemistry is particularly well suited for stabilization and trapping of negatively charged, highly water-soluble nucleic acids in porous silicon nanostructures; in the present case the TrkB aptamer was loaded to a mass percentage of $14 \pm 0.3\%$. The loaded particles displayed an average particle size of 257 ± 2 nm and a zeta potential of 3.7 ± 0.4 mV.

The NGF protein was loaded using an oxidative trapping technique, where the protein becomes trapped in the pSiNP pores as the pore walls are oxidized in an aqueous buffer.^[27, 50] Overnight loading of NGF into pSiNPs from phosphate buffered saline (PBS) resulted in a mass loading of $0.21 \pm 0.07\%$, average particle size of 206 ± 2 nm, and zeta potential of -24 ± 4 mV. The mass loading of NGF was substantially lower than what was obtained for the other two techniques due to the low concentration of NGF used in the loading solution. A higher mass loading was not necessary because of the high potency of this molecule. It was estimated that this loading level would result in an *in vitro* concentration of NGF in excess of the ED₅₀ concentration of 0.3 ng mL^{-1} (0.01 nM) required to induce neurite outgrowth in cultured sensory neurons.^[52]

Each of the API-loaded-pSiNPs were then incorporated into uniaxial PLGA nanofibers using an airbrush nebulization technique, following a previously reported method.^[27] Scanning electron microscope (SEM) images revealed uniaxial alignment of the collected nanofibers (Figure 1B-E), with average angles from the median angle of alignment of $12.3 \pm 17.6^\circ$, $9.6 \pm 11.3^\circ$, $12.6 \pm 15.6^\circ$, and $15.3 \pm 16.7^\circ$ for PLGA, bpV(HOpic)-PLGA, TrkB aptamer-PLGA, and NGF-PLGA nanofibers, respectively (Figure 1J). For all the nanofiber hybrids, more than 70% of the fibers were within 20° of the median angle of alignment, and more than 80% of the fibers were within 30° of the median angle of alignment. SEM measurements (Figure 1F-I) indicated average nanofiber diameters of 209 ± 60 nm, 211 ± 78

nm, 213 ± 78 nm, and 250 ± 79 nm for PLGA, bpV(HOpic)-PLGA, TrkB aptamer-PLGA, and NGF-PLGA nanofibers, respectively (Figure 1K). The diameters of the nanofibers were similar to the diameter of the pSiNPs, and some isolated nanoparticles were observed outside the nanofiber structures in both the SEM (Figure 1C-E) and transmission electron microscope (TEM) (Figure 1G-I) micrographs, although the majority of the nanoparticles appeared to be encapsulated by polymer. In lower magnification TEM images, pSiNPs can be found both dispersed as isolated particles or consolidated into clusters in different regions of the nanofibers (Figure S2, Supplemental Information). Water contact angle values ($137 \pm 7^\circ$, $136 \pm 4^\circ$, and $133 \pm 4^\circ$ for bpV(HOpic)-PLGA, TrkB aptamer-PLGA, and NGF-PLGA nanofibers, respectively, (Figure S3, Supplemental Information) were similar to the value measured on pure PLGA nanofibers ($134 \pm 1.8^\circ$), indicating that the nanoparticles exerted little impact on the water contact angle of the nanofibers.

The pSiNPs used in these studies displayed intrinsic photoluminescence (PL) derived from quantum confinement in the silicon nanocrystallites comprising the silicon skeleton.^[30] This property has interesting applications in biosensing,^[53] self-reporting drug release,^[54] two-photon imaging,^[55] and time-gated *in vivo* imaging,^[56-57] and in this work it is used to definitively identify the pSiNPs in the polymer fibers. Previously, we showed that photoluminescent pSiNPs incorporated into PCL nanofibers displayed broad PL emission ($\lambda_{em} = 600-1000\text{nm}$), and long emission lifetimes. This latter property allowed separation of the luminescent pSiNPs from polymer autofluorescence and light scattering phenomena using time-gated imaging.^[27] All three of the loading chemistries used here generate photoluminescent pSiNPs with emission quantum yields ranging from 8-23%.^[27, 50-51, 58] Using UV excitation ($\lambda_{ex} = 365\text{nm}$), bpV(HOpic)-PLGA, TrkB aptamer-PLGA, and NGF-PLGA nanofibers all exhibited the broad photoluminescence emission spectra characteristic of pSiNPs (Figure S4A-E, Supplemental Information). In order to benchmark the ability of time-gated imaging to discriminate these nanoparticles from autofluorescent

tissues, images were collected from the pSiNP/PLGA materials and from the excised brain of a mouse. When a 5 μ s time gate was used to collect the images, the high level of autofluorescence characteristic of brain tissue was completely removed, while the pSiNP/polymer scaffolds were readily observed (Figure S4F,G, Table S1, Supplemental Information). Measurements of pristine PLGA nanofiber controls (containing no SiNPs) also showed no image contrast in the time-gated images, confirming the presence of pSiNPs in the hybrid scaffolds.

Because of the wide range of indications for which drug-delivering polymer scaffolds might play a role, there is a wide range of temporal release profiles desired. Furthermore, an optimal scaffold chemistry needs to balance potency, duration of action, and side effects/toxicity for a given API. In the present case, we employed three distinct loading chemistries that were previously optimized for specific classes of molecules. For the small molecule drug, bpV(HOpic), a pSi adsorption loading technique was used because this method has previously shown a burst release profile for hydrophilic small molecules over short (minutes-hours) time scales.^[59] Calcium-silicate trapping was used for the TrkB aptamer, as this pSi loading chemistry has a release profile in the range of a few hours to 1 day.^[60] The oxidation trapping method was used for NGF because it has previously been shown to release proteins over multiple days with minimal loss in activity.^[27, 50]

Payload release from each of the pSiNP/PLGA nanofiber systems was determined as a function of time incubated in a PBS buffer at 37 °C. The small molecule API bpV(HOpic) released from the scaffold over a 10 day period (**Figure 2**), with a pronounced burst release (584 ± 55 pmoles mg^{-1} nanofibers) during the first 2 days (Fig. S5A, Supplemental Information). The release then slowed to a steady, relatively linear profile for the remaining 8 days, and after 10 days of incubation a total of 744 ± 16 pmoles of API per mg of nanofibers was released. Of the incorporated bpV(HOpic), $38 \pm 4\%$ was released over the first 2 days, with $49 \pm 6\%$ released over the 10 day study period (Figure 2B). The nanofibers containing

TrkB aptamer-loaded pSiNPs released $77 \pm 5\%$ of the aptamer payload over a 20 day period (Fig. 2C). A relatively large quantity was released in the first 2 days (326 ± 5 pmoles mg^{-1} nanofibers), which slowed between days 2-4 (67 ± 5 pmoles mg^{-1} nanofibers), and then a slower, linear release was observed for the remaining 20 days (average of 9 ± 3 pmoles mg^{-1} nanofibers 48h^{-1}), for a total of 464 ± 17 pmoles mg^{-1} nanofibers released over 20 days (Fig. 2C and Fig. S5B, Supplemental Information). Nanofibers containing NGF-loaded pSiNPs released the protein growth factor payload over a 6 week period (Fig. 2D and Fig. S5C, Supplemental Information). The temporal release profile for this chemistry showed a delayed burst: 0.30 ± 0.05 ng NGF mg^{-1} nanofibers was released in the first 2 days, 3 ± 2 ng mg^{-1} nanofibers released between days 2-4, and 10 ± 5 ng mg^{-1} nanofibers released between days 4-6. Release slowed again at later times, with an average of 4 ± 1 ng mg^{-1} nanofibers released between days 6 to 12 and 1.5 ± 0.9 ng mg^{-1} nanofibers 48h^{-1} for the remaining time of the release study (cumulative release of 48 ± 16 ng mg^{-1} nanofibers, or $32 \pm 11\%$ of the incorporated NGF was released over the 6 week study period).

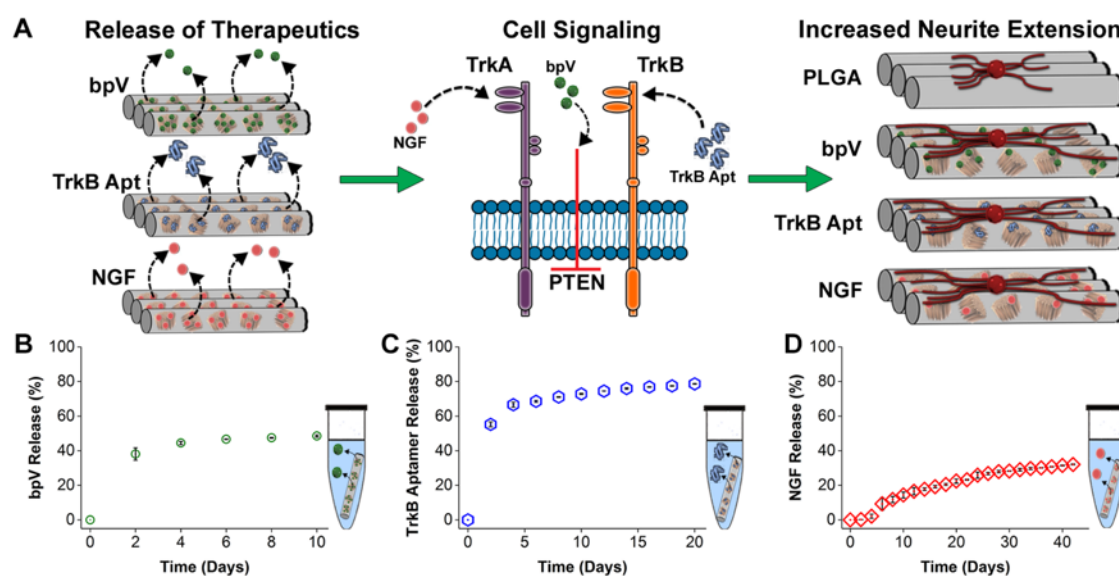


Figure 2. Mode of action of the three neurotrophic agents studied in this work and their temporal release characteristics from hybrid pSiNP/PLGA nanofibers. (A) Schematic depicting the different modes of action of each of the three payloads released from the hybrid nanofiber scaffolds. Once released from the relevant scaffold (left), bpV(HOPic) blocks PTEN intracellularly, TrkB aptamer acts as a ligand for TrkB, and NGF binds to its receptor (TrkA) (middle). Growth of neurites from DRG explants placed on these nanofibers is hypothesized to be enhanced compared to a PLGA nanofiber control (right). (B-D) Percent of API payload released from hybrid PLGA nanofibers as a function of time in PBS buffer at

37 °C. (A) $49 \pm 5.6\%$ of incorporated bpV(HOpic) was released over the 10-day release period. (B) $77 \pm 4.9\%$ of incorporated TrkB aptamer was released over the 20 day release period. (C) $32 \pm 11\%$ of incorporated NGF was released over the 42 day release period.

Previously, it was demonstrated that the 75:25 (L:G) composition of PLGA nanofibers used in this work show very small changes in mass over an 8-week time period when in PBS solutions at 37°C.^[61-62] We used SEM and AFM measurements to probe how inclusion of pSiNPs alters the nanofiber surface after 7 days in PBS at 37°C. Control PLGA nanofibers showed minimal surface roughness at both 0 and 7 days in PBS at 37°C (Figure S6A, B,E,F Supplemental Information). By contrast, the pSiNP/PLGA hybrid nanofibers displayed obvious evidence of degradation (Figure S6C,D, Supplemental Information). The porous nanoparticle structure is evident in the SEM images prior to degradation (Figure S6C, Supplemental Information). After 7 days in PBS the pSiNPs have visibly degraded (Figure S6D, Supplemental Information) and the polymer fibers displayed a marked increase in surface roughness, with surface indentations (measured by AFM) of 10-40 nm in depth (Figure S6G, H, Supplemental Information). Prior to degradation, PLGA and pSiNP/PLGA hybrid nanofibers demonstrated similar Young's moduli of 122 ± 33 kPa and 90 ± 4 kPa, respectively (Figure S6I, Supplemental Information). These values lie in the range of PLGA moduli previously reported using similar AFM nanoindentation methods.^[63] Interestingly, while the PLGA nanofibers actually displayed a lower Young's modulus after 7 days (32 ± 8 kPa), pSiNP/PLGA hybrid nanofibers showed an increase in Young's modulus (to 198 ± 41 kPa). The degradation of the pSiNPs at the surface of the nanofibers observed following the 1 week incubation period is consistent with the rapid release of bpV(HOpic) and the TrkB aptamer observed in the first week of PBS exposure.

We next evaluated the impact of the released therapeutics on neurite extension using whole DRG explants from P2 C57BL/6J mouse pups. DRG seeded onto the pSiNP/PLGA nanofiber hybrids were immersed in neurobasal media supplemented with B27 and N2, but no

additional neurotrophic factors, so that the media itself had a limited capacity to encourage the outgrowth of neurites from the DRG. In addition, the PLGA scaffolds were coated with laminin ($5\mu\text{g mL}^{-1}$) to improve the adhesion of DRG explants to the hydrophobic scaffolds. Following 7 days in culture, the DRG were fixed and stained with NF200 (neurites) and Hoechst (nuclei) for analysis.

The alignment of the neurites extending on the hybrid nanofibers was analyzed and the results are presented in **Figure 3**. Degree of alignment is an important parameter because neurite growth alignment has been shown to improve nerve regeneration following injury.^[64-66] Neurites growing from the DRG were uniaxially oriented due to the uniaxial alignment of the hybrid nanofiber scaffolds (Fig. 3A-E), with $54 \pm 8\%$, $64 \pm 13\%$, $69 \pm 3\%$, and $59 \pm 2\%$ of the extending neurites aligned within 15° of the median angle of neurite alignment for PLGA, bpV(HOpic)-PLGA, TrkB aptamer-PLGA, and NGF-PLGA nanofibers, respectively (Fig. 3F). When DRG explants were cultured on flat PLGA films, a significantly lower percentage ($16 \pm 6.5\%$) of the extending neurites were within 15° of the median angle of neurite alignment compared to all the nanofiber groups. There were also significantly fewer neurites extending between $75\text{-}90^\circ$ from the median angle of alignment (Fig. 3F). These results demonstrate the ability of the topography created by the hybrid nanofibers to uniaxially orient the outgrowth of extending neurites from cultured DRG explants.

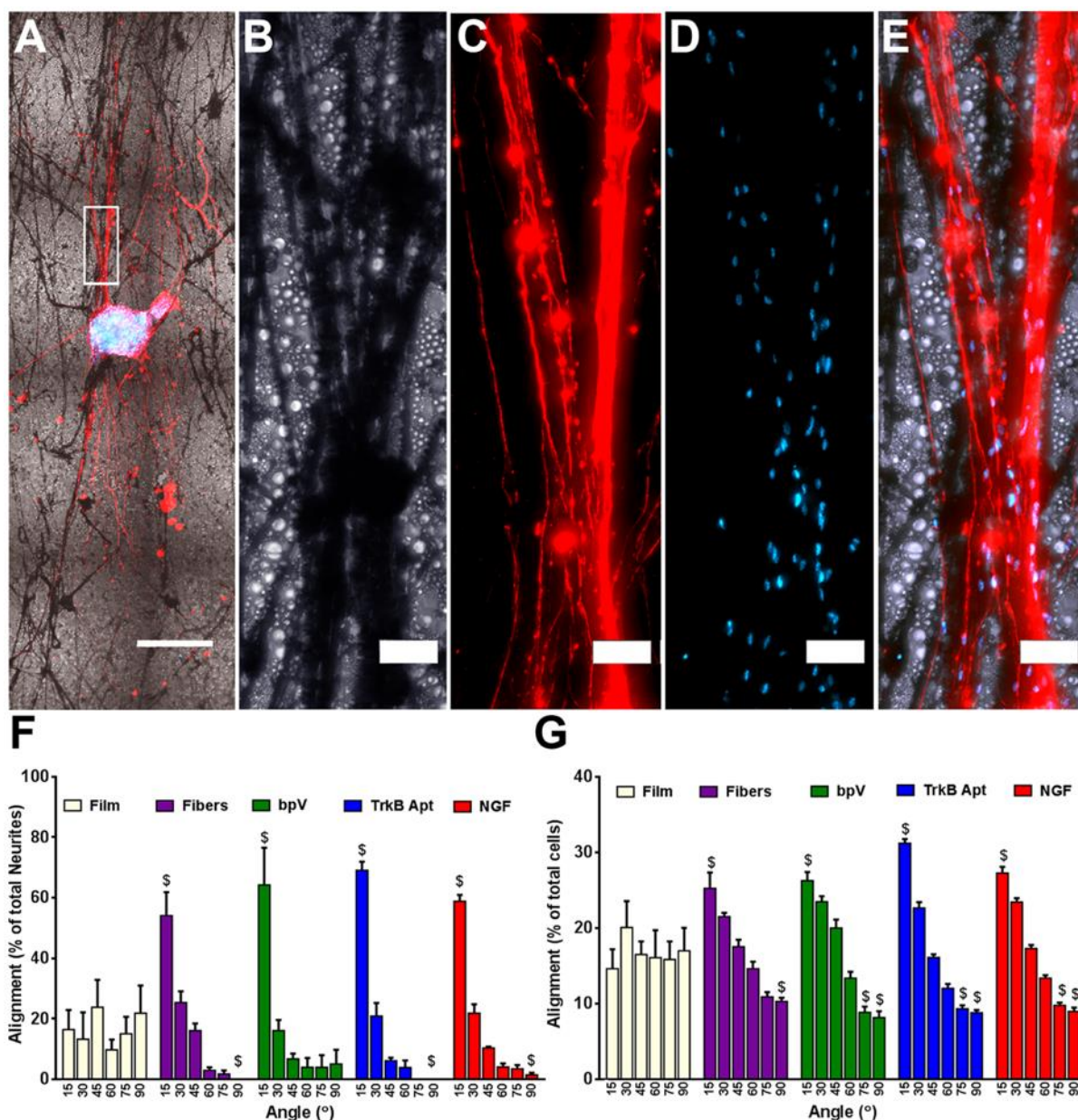


Figure 3. Alignment of extending neurites and migrating cells cultured on the different nanofiber scaffolds. (A) Low magnification (5x) image of NF200 stained DRG explant growing along pure PLGA nanofibers. (B) High magnification bright field image of nanofibers, (C) neurites, (D) Hoechst stained nuclei, and (E) the merged image of all three. (F) Alignment of extending neurites from DRG explants. When compared to DRG explants grown on flat PLGA films, significantly more neurites extended within 15° and significantly fewer grew between 75-90° of the median angle of neurite alignment on all four fiber groups. No differences were seen between any of the fiber groups. (G) Angle of the long axis of cells migrating away from the DRG explants. When compared to DRG explants grown on films, significantly more long axes of cells were within 15° and significantly fewer grew between 75-90° of the median angle of cellular alignment on all four fiber groups. For bpV(HOPic), TrkB aptamer, and NGF pSiNP/PLGA hybrid nanofibers, significantly fewer cellular long axes were with 60-75° of the median angle of cellular alignment compared to explants on PLGA films. Scale Bar=500 μm (A), 50 μm (B-E); n=5; \$= p < 0.05 compared to PLGA films.

DRG explants are not composed entirely of DRG neurons, and the other cells present in the explants are known to be mainly Schwann cells and fibroblasts.^[67] We also examined the ability of the nanofibers to alter the alignment of the longest axis of cells that migrated out of the DRG explant using a previously published image analysis technique.^[68] We found that the nanofibers induced orientation of the longest axis of migrating cell nuclei, with $25 \pm 2\%$, $26 \pm 2\%$, $31 \pm 0.6\%$, and $27 \pm 0.8\%$ of the longest axes within 15° of the median angle of nuclei alignment for PLGA, bpV(HOpic)-PLGA, TrkB aptamer-PLGA, and NGF-PLGA nanofibers, respectively (Fig. 3G). When DRG explants were cultured on PLGA films, a significantly lower percentage ($14 \pm 3\%$) of the longest axes on the migrating cell nuclei were within 15° of the median angle of nuclei alignment. Again, there were fewer migrating cell nuclei with their longest axes between $75\text{--}90^\circ$ of the median angle of alignment compared to DRG explants on films (Fig. 3G). Taken together, these results demonstrate that the orientation of both neurite outgrowth and migrating cell nuclei are uni-axially aligned due to the presentation of the nanofiber topography for all the different hybrid nanofiber scaffolds tested.

We next evaluated the ability of the neurotrophic APIs to enhance neurite extension (**Figure 4**). It should first be pointed out that nanofibers can induce neurite extension even in the absence of a neurotrophic factor. This has been attributed to the topological features of nanofibers, which offer adhesion points and direct the process of neurite elongation along the nanofiber scaffolds.^[69] Such elongation was also observed in the present system, and DRG explants cultured on pure PLGA nanofiber scaffolds (Fig. 4B) showed significantly longer neurite extension compared to those cultured on pure PLGA films (Fig. 4A). Both the range of neurite extension (Fig. 4F), and the average of the 10 longest neurites on each scaffold (Fig. 4H) were larger, consistent with previous reports.^[69]

In order to test if the incorporation of a neurotrophic payload in the nanofibers would further enhance neurite extension, the nanofibers and their nanoparticle delivery vehicles were

engineered such that each API would reach a steady state concentration *in vitro* that would be effective in enhancing neuronal growth. The inputs to these designs were: culture conditions (2 mg of nanofiber scaffolds, 0.5 mL neurobasal media); the measured release rate of the API (Figure S5, Supporting Information); and the published minimum concentration needed to elicit a therapeutic impact on DRG extension,^[40, 44, 52] which allowed us to calculate estimates of the concentration of API in the DRG cultures for the duration of the culture period (Figure S7, Supporting Information). Importantly, because these concentrations were an estimate using the entire volume of the culture media, DRG explants were potentially exposed to higher local concentrations of the therapeutics due to their proximity to the scaffolds.

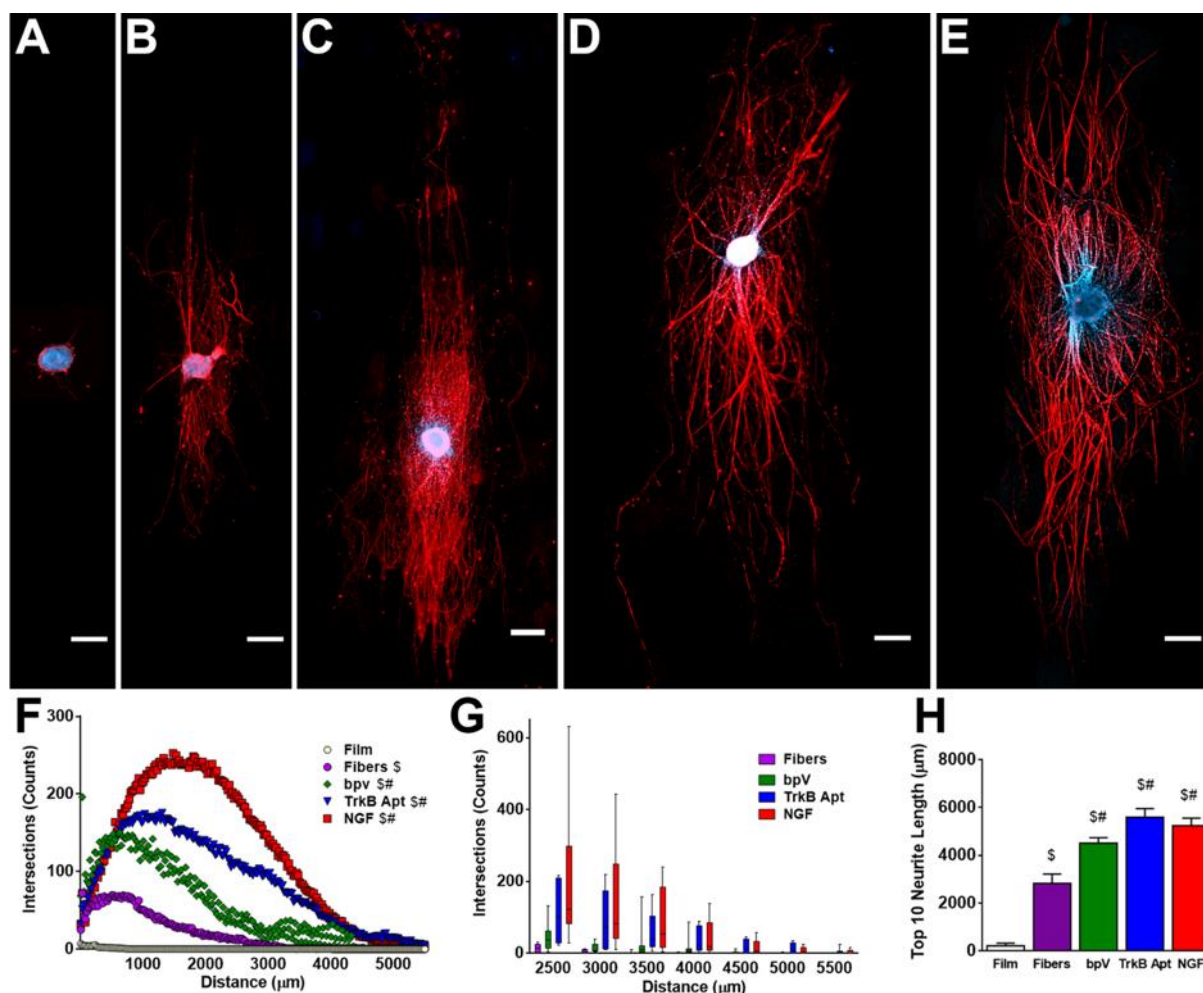


Figure 4. Enhancement of neurite extension induced by release of therapeutics from hybrid PLGA nanofibers. (A-E) DRG explants cultured on (A) PLGA film control, (B) PLGA fiber control, (C) bpV(HOpic)-pSiNP/PLGA nanofiber hybrids, (D) TrkB aptamer-pSiNP/PLGA nanofibers, and (E) NGF-PSiNP/PLGA nanofiber hybrids. (F) Range of neurite extension on each scaffold type. Pure PLGA fibers caused more robust growth of neurite extension from

DRG explants compared to PLGA films. The addition of bpV(HOpic)-pSiNPs, TrkB aptamer-pSiNPs, or NGF-pSiNPs further increased the number of neurite intersections over the range of neurite extension. (G) Box and whisker plot of select ranges beyond 2500 μm of neurite extension, showing that few neurite intersections were counted from any PLGA nanofiber scaffold controls at these distances from the DRG explants. (H) Average of the ten longest extending neurites on each scaffold. PLGA fibers alone induced longer neurite extension from DRG explants compared to PLGA films. The addition of bpV(HOpic)-pSiNPs, TrkB aptamer-pSiNPs, or NGF-pSiNPs further increased the length of neurite intersection. Scale Bar = 500 μm ; $n = 5$; $\$ = p < 0.05$ compared to PLGA film; $\# = p < 0.05$ compared to PLGA fibers.

A series of control experiments designed to eliminate the possibility that surface chemistry, surface charge, or other factors played a role in enhancement of neurite extension were then performed. We tested PLGA nanofibers containing empty pSiNPs grafted with the same amine surface chemistry used to load bpV(HOpic) but with no small molecule payload (Figure S8, Supporting Information), PLGA nanofibers containing pSiNPs loaded with a control DNA sequence using the same calcium silicate chemistry used to load the aptamer (Figure S9, Supporting Information), and PLGA nanofibers containing pSiNPs that had been loaded with bovine serum albumin (BSA) using the same oxidative trapping procedure used to load the NGF protein (Figure S10, Supporting Information). All of these controls showed no significant difference in the average of the 10 longest neurites or in overall DRG extension as measured by the number of neurites that intersected with radiating outlines of the DRG body at 50 μm intervals from each scaffold. These results showed that the pSiNPs and all of the loading chemistries used in the formulations did not alter neurite extension from DRG explants on nanofiber scaffolds.

The presence of a neurotrophic payload in the nanofiber scaffold substantially enhanced neurite extension relative to pure PLGA nanofibers, for all three of the APIs studied. Neurites extending from DRG cultured on bpV(HOpic)-loaded pSiNP/nanofiber scaffolds (Fig. 4C), TrkB aptamer-loaded pSiNP/nanofiber scaffolds (Fig. 4D), and NGF-loaded pSiNP/nanofiber scaffolds (Fig. 4E) all showed significantly more NF200 stained intersections across the range of distances when compared to pure PLGA nanofiber controls

(Fig. 4B,F) and their respective nanoparticle scaffold controls (Supplemental Figures S8, S9, S10, Supplemental Information). Using a box and whisker plot, distances over 2500 μm were further depicted in 500 μm intervals to demonstrate NF200 counts far from the body of the DRG explant. Few neurite intersections from DRG explants on PLGA nanofibers were seen beyond 3000 μm , whereas neurites extending on all 3 API-releasing nanofibers had intersections out to 4500 μm (Fig. 4G). TrkB aptamer and NGF releasing scaffolds showed neurite intersections even out to 5500 μm .

In order to analyze changes in the extension of the longest neurites, the average length of the 10 longest neurites in each scaffold was determined. The longest neurites extending on bpV(HOpic)-loaded pSiNP/nanofibers averaged $4511 \pm 241 \mu\text{m}$, on TrkB aptamer-loaded pSiNP/nanofibers averaged $5592 \pm 360 \mu\text{m}$, and on NGF-loaded pSiNP/nanofibers averaged $5248 \pm 323 \mu\text{m}$, all of which were significantly longer than the longest neurites extending on control PLGA nanofibers ($2835 \pm 389 \mu\text{m}$) (Figure 4H). Neurites from DRG explants extending on NH_2 pSiNP control nanofibers ($2653 \pm 605 \mu\text{m}$) (Figure S8, Supplemental Information), DNA control pSiNP nanofibers ($3732 \pm 394 \mu\text{m}$) (Figure S9, Supplemental Information), and BSA pSiNP control nanofibers ($3262 \pm 511 \mu\text{m}$) (Figure S10, Supplemental Information), were all significantly shorter than their corresponding API-releasing nanofiber scaffolds, and they showed no difference compared to neurites extending on PLGA nanofiber control scaffolds. These data demonstrate that all three API-releasing nanofibers promote more robust neurite growth as determined by an increase in the number of neurite intersections (Figure 4F), and the length of neurite extension (Figure 4G,H). Importantly, these results verify the retention of activity of all three payloads, showing that each of these drug-loading chemistries is suitable for payload incorporation into polymer nanofibers.

Cellular migration out of the DRG explants was quantified in order to assess how the various hybrid scaffolds changed the growth of Schwann cells and fibroblasts (Figure 5). Cells migrating from DRG cultured on bpV(HOpic)-loaded pSiNP/nanofibers (Fig. 5C),

TrkB aptamer-loaded pSiNP/nanofibers (Fig. 5D), and NGF-loaded pSiNP/nanofibers (Fig. 5E) all showed significantly more Hoechst stained intersections across the range of distances when compared to PLGA nanofiber and film controls (Figure 5B,F), as well as their respective nanoparticle scaffold controls (Supplemental Figure S11, S12, S13, Supplemental Information). This signifies that there were generally more cells migrating out of the DRG explants in the presence of the three APIs. We then looked at the average length of the 10 cells that migrated farthest from each DRG explant. The farthest cells migrated 2794 ± 174 μm on bpV(HOpic)-loaded pSiNP/nanofibers, 4290 ± 764 μm on TrkB aptamer-loaded pSiNP/nanofibers, and 3847 ± 347 μm on NGF-loaded pSiNP/nanofibers (Fig. 5G). Cells migrated significantly farther on TrkB aptamer and NGF-loaded pSiNP/nanofiber scaffolds compared to PLGA nanofiber controls (1867 ± 195 μm) (Fig. 5B,G), the DNA-pSiNP control nanofibers (1968 ± 172 μm) (Figure S12, Supplemental Information), and BSA-pSiNP control nanofibers (2668 ± 563 μm) (Figure S13, Supplemental Information). However, no statistically significant differences were seen between bpV(HOpic)-loaded pSiNP/nanofibers and PLGA controls or NH₂-pSiNP control nanofibers (1967 ± 22 μm) (Figure S11, Supplemental Information). Previously, inhibition of PTEN was shown to increase fibroblast cellular migration.^[70] While the bpV(HOpic) results here show that cells are not migrating significantly farther than DRG explants on control scaffolds, more cells are migrating out of the DRG explants on bpV(HOpic) scaffolds demonstrating mobilization of cells from the DRG explants (Figure 5F,G).

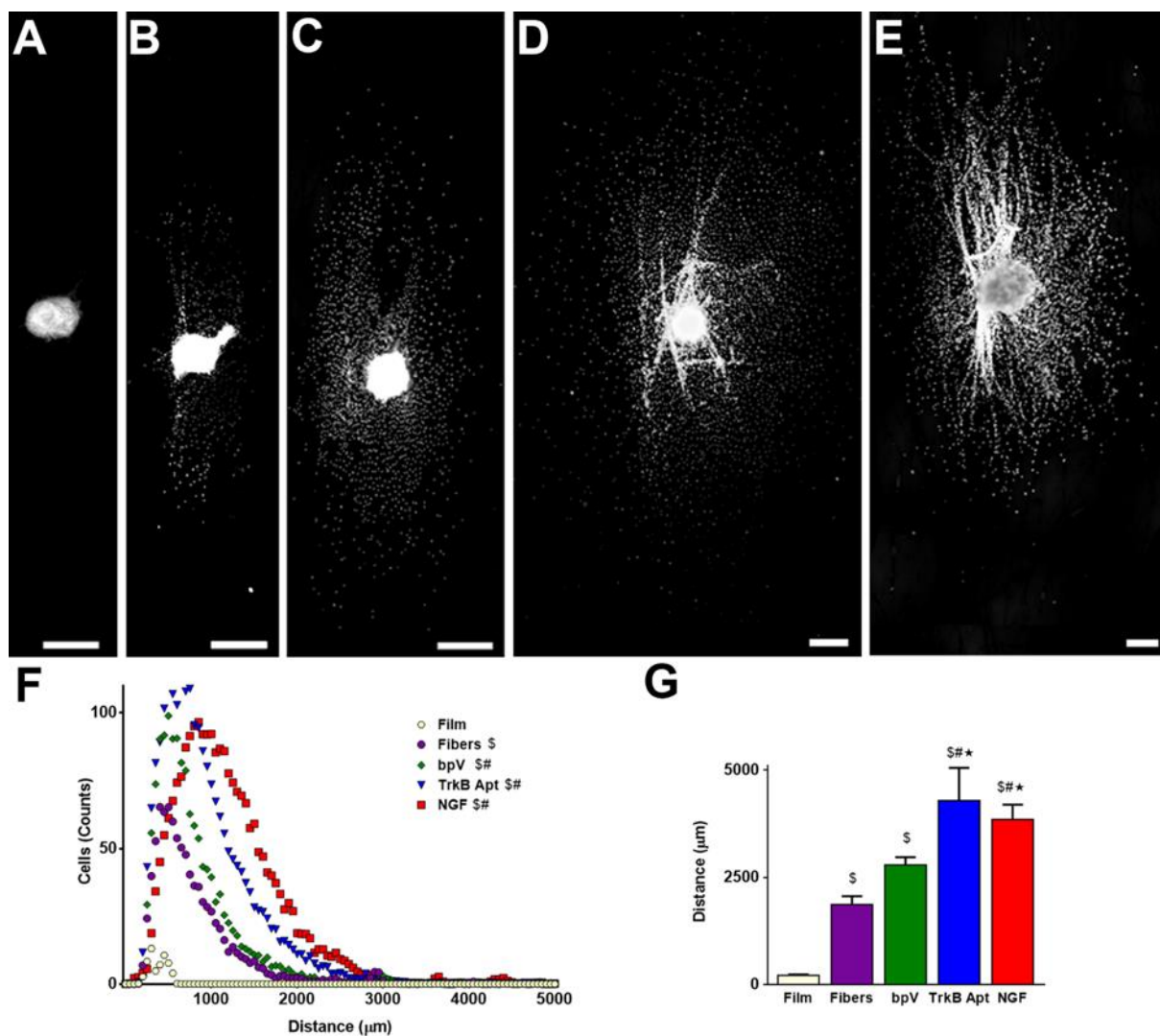


Figure 5. Increase in neurite migration induced on hybrid PLGA nanofibers. (A-E) Hoechst stained DRG explants cultured on (A) pure PLGA film control, (B) pure PLGA fiber control, (C) bpV(HOpic)-pSiNP/PLGA nanofiber hybrids, (D) TrkB Aptamer-pSiNP/PLGA nanofibers, and (E) NGF-PSiNP/PLGA nanofiber hybrids. (F) Range of cellular migration from DRG explants on each scaffold type. Pure PLGA fibers showed more counts of cellular migration from DRG explants compared to pure PLGA films. Scaffolds containing bpV(HOpic)-pSiNPs, TrkB aptamer-pSiNPs, or NGF-pSiNPs showed further increase in the number of nuclei intersections over the range of cellular migration. (G) Average of the ten farthest migrating nuclei on each scaffold. PLGA fibers alone induced more extensive cellular migration from DRG explants compared to PLGA films. Scaffolds containing TrkB aptamer-pSiNPs or NGF-pSiNPs, but not bpV(HOpic)-pSiNPs, further increased the distance of cellular migration compared to pure PLGA fibers. Scale Bar = 500 μm ; n = 5; \$ = p < 0.05 compared to PLGA film; # = p < 0.05 compared to PLGA fibers; * = p < 0.05 compared to bpV(HOpic)-pSiNP/PLGA nanofiber hybrids.

This work provides one solution to the problem of formulating and delivering therapeutic agents in conventional biocompatible/biodegradable polymers by incorporating

porous silicon nanoparticles (pSiNPs) that are pre-loaded with the therapeutic into the polymer scaffold during fabrication. The pSiNPs were loaded with three classes of compounds: a highly water-soluble small molecule, a nucleic acid construct (RNA aptamer), and a protein. The three molecules allowed the evaluation of three distinct pSiNP loading chemistries, and the ability of these chemistries to control payload release profiles from PLGA nanofibers. We found that the nanofiber topography directs the growth of cells and extending neurites in a DRG explant culture system, and that the small molecule drug, the RNA aptamer, and the protein growth factor all retained their function and were able to enhance DRG explant neurite extension when formulated with the pSiNP/PLGA nanofiber system. Additionally, this work represents the first example of release of an RNA aptamer from polymer nanofibers to enhance neurite extension. The ultimate goal of these studies was to develop implantable scaffolds that incorporate slow release of therapeutic agents to enhance nerve repair after traumatic injury. This study demonstrates a versatile, modular approach to deliver a variety of therapeutic payloads from polymer scaffolds for such an application; the approach may also be applicable to other tissue engineering problems.

Supporting Information

Supporting Information is available from the Wiley Online Library or from the author.

Acknowledgements

JMZ and CMD contributed equally to this work. The authors thank Dr. Kendell Pawelec and Prof. Jeff Sakamoto for helpful discussions regarding this research. This study was supported by the National Science Foundation under Grant No. CBET-1603177 (MJS), and *in vitro* DRG studies were supported in part by the National Institutes of Health under Grant No. NIBIB-RO1-EB005678 (LDS). Transmission electron micrographs were obtained in the Cellular and Molecular Medicine Electron microscopy core facility, which is supported in part by National Institutes of Health Award number S10OD023527. This work was performed in part at the San Diego Nanotechnology Infrastructure (SDNI) of UCSD, a member of the National Nanotechnology Coordinated Infrastructure, which is supported by the National Science Foundation (Grant ECCS-1542148). This project received funding from the European Union's Horizon 2020 research and innovation program under the Marie Skłodowska-Curie grant agreement No 704120 ("MIRNANO"). Dr. AB is a Global Marie Skłodowska-Curie Fellow. Dr. JK acknowledges financial support from the UCSD Frontiers of Innovation Scholars Program (FISP) fellowship. JW thanks the NIH for the predoctoral training grant 2T32CA1539106A1 (CRIN).

Conflict Disclosure

MJS holds an appointment as a “High-Level Talent” at the Key Laboratory of Organosilicon Chemistry and Material Technology of Hangzhou Normal University, **he is a Guest Professor at Zhejiang University, China**, and he is a scientific founder of Spinnaker Biosciences, Inc., a member of the Board of Directors, and has an equity interest in the company. Although one or more of the grants that supported this research has been identified for conflict of interest management based on the overall scope of the project and its potential benefit to Spinnaker Biosciences, Inc., the research findings included in this particular publication may not necessarily relate to the interests of Spinnaker Biosciences, Inc. The terms of this arrangement have been reviewed and approved by the University of California, San Diego in accordance with its conflict of interest policies.

Received: ((will be filled in by the editorial staff))

Revised: ((will be filled in by the editorial staff))

Published online: ((will be filled in by the editorial staff))

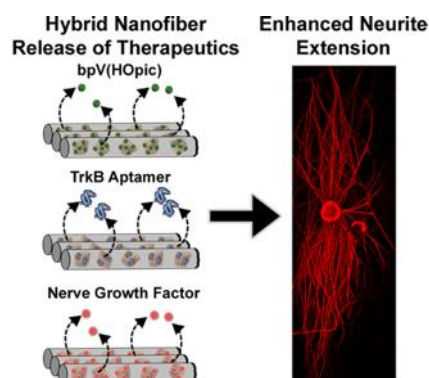
References

- [1] J. W. Xie, S. M. Willerth, X. R. Li, M. R. Macewan, A. Rader, S. E. Sakiyama-Elbert, Y. N. Xia, *Biomaterials* **2009**, *30*, 354.
- [2] F. Yang, R. Murugan, S. Wang, S. Ramakrishna, *Biomaterials* **2005**, *26*, 2603.
- [3] X. H. Zong, H. Bien, C. Y. Chung, L. H. Yin, D. F. Fang, B. S. Hsiao, B. Chu, E. Entcheva, *Biomaterials* **2005**, *26*, 5330.
- [4] S. Lee, M. K. Leach, S. A. Redmond, S. Y. C. Chong, S. H. Mellon, S. J. Tuck, Z. Q. Feng, J. M. Corey, J. R. Chan, *Nat. Methods* **2012**, *9*, 917.
- [5] G. C. Ingavle, J. K. Leach, *Tissue Eng. Part B Rev.* **2014**, *20*, 277.
- [6] L. E. Sperling, K. P. Reis, P. Pranke, J. H. Wendorff, *Drug Discov. Today* **2016**, *21*, 1243.
- [7] D. Kai, M. J. Tan, M. P. Prabhakaran, B. Q. Y. Chan, S. S. Liow, S. Ramakrishna, X. J. Loh, *Colloid Surf. B* **2016**, *148*, 557.
- [8] M. K. Smith, V. Singh, K. Kalaitzidou, B. A. Cola, *ACS Appl. Mater. Interfaces* **2016**, *8*, 14788.
- [9] M. L. Chen, Y. F. Li, F. Besenbacher, *Adv. Healthc. Mater.* **2014**, *3*, 1721.
- [10] X. L. Lin, D. Y. Tang, H. F. Du, *J. Pharm. Pharmacol.* **2013**, *65*, 673.
- [11] M. S. Lee, T. Ahmad, J. Lee, H. K. Awada, Y. D. Wang, K. Kim, H. Shin, H. S. Yang, *Biomaterials* **2017**, *124*, 65.
- [12] T. Briggs, T. L. Arinzeh, *J. Biomed. Mater. Res. A* **2014**, *102*, 674.
- [13] X. Q. Li, Y. Su, S. P. Liu, L. J. Tan, X. M. Mo, S. Ramakrishna, *Colloid Surf. B* **2010**, *75*, 418.
- [14] G. Yazgan, A. M. Popa, R. M. Rossi, K. Maniura-Weber, J. Puigmarti-Luis, D. Crespy, G. Fortunato, *Polymer* **2015**, *66*, 268.
- [15] H. L. Jiang, L. Q. Wang, K. J. Zhu, *J. Control. Release* **2014**, *193*, 296.
- [16] Y. Su, Q. Q. Su, W. Liu, M. Lim, J. R. Venugopal, X. M. Mo, S. Ramakrishna, S. S. Al-Deyab, M. El-Newehy, *Acta Biomater.* **2012**, *8*, 763.
- [17] C. Yang, D. G. Yu, D. Pan, X. K. Liu, X. Wang, S. W. A. Bligh, G. R. Williams, *Acta Biomater.* **2016**, *35*, 77.
- [18] D. Han, S. Sherman, S. Filocamo, A. J. Steckl, *Acta Biomater.* **2017**, *53*, 242.
- [19] Y. Yang, T. Xia, W. Zhi, L. Wei, J. Weng, C. Zhang, X. H. Li, *Biomaterials* **2011**, *32*, 4243.

- [20] D. Han, A. J. Steckl, *ACS Appl. Mater. Inter.* **2013**, *5*, 8241.
- [21] M. L. Chen, S. Gao, M. D. Dong, J. Song, C. X. Yang, K. A. Howard, J. Kjems, F. Besenbacher, *ACS Nano* **2012**, *6*, 4835.
- [22] M. Ke, J. A. Wahab, B. Hyunsik, K. H. Song, J. S. Lee, M. Gopiraman, I. S. Kim, *RSC Adv.* **2016**, *6*, 4593.
- [23] K. X. Qiu, C. L. He, W. Feng, W. Z. Wang, X. J. Zhou, Z. Q. Yin, L. Chen, H. S. Wang, X. M. Mo, *J Mater Chem B* **2013**, *1*, 4601.
- [24] S. Kashanian, F. Harding, Y. Irani, S. Klebe, K. Marshall, A. Loni, L. Canham, D. Fan, K. A. Williams, N. H. Voelcker, J. L. Coffey, *Acta Biomater.* **2010**, *6*, 3566.
- [25] D. Fan, G. R. Akkaraju, E. F. Couch, L. T. Canham, J. L. Coffey, *Nanoscale* **2011**, *3*, 354.
- [26] S. J. P. McInnes, T. J. Macdonald, I. P. Parkin, T. Nann, N. H. Voelcker, *Nanomaterials* **2018**, *8*, 205.
- [27] J. M. Zuidema, T. Kumeria, D. Kim, J. Y. Kang, J. A. N. Wang, G. Hollett, X. Zhang, D. S. Roberts, N. Chan, C. Dowling, E. Blanco-Suarez, N. J. Allen, M. H. Tuszynski, M. J. Sailor, *Adv. Mater.* **2018**, *30*, 1706785.
- [28] J.-H. Park, L. Gu, G. v. Maltzahn, E. Ruoslahti, S. N. Bhatia, M. J. Sailor, *Nat. Mater.* **2009**, *8*, 331.
- [29] S. P. Low, N. H. Voelcker, L. T. Canham, K. A. Williams, *Biomaterials* **2009**, *30*, 2873.
- [30] A. G. Cullis, L. T. Canham, *Nature* **1991**, *353*, 335.
- [31] R. A. Bley, S. M. Kauzlarich, J. E. Davis, H. W. H. Lee, *Chem. Mat.* **1996**, *8*, 1881.
- [32] C. F. Wang, M. P. Sarparanta, E. M. Makila, M. L. K. Hyvonen, P. M. Laakkonen, J. J. Salonen, J. T. Hirvonen, A. J. Airaksinen, H. A. Santos, *Biomaterials* **2015**, *48*, 108.
- [33] E. Secret, K. Smith, V. Dubljevic, E. Moore, P. Macardle, B. Delalat, M. L. Rogers, T. G. Johns, J. O. Durand, F. Cunin, N. H. Voelcker, *Adv. Healthc. Mater.* **2013**, *2*, 718.
- [34] E. Tasciotti, X. W. Liu, R. Bhavane, K. Plant, A. D. Leonard, B. K. Price, M. M. C. Cheng, P. Decuzzi, J. M. Tour, F. Robertson, M. Ferrari, *Nat. Nanotechnol.* **2008**, *3*, 151.
- [35] K. R. Beavers, T. A. Werfel, T. W. Shen, T. E. Kavanaugh, K. V. Kilchrist, J. W. Mares, J. S. Fain, C. B. Wiese, K. C. Vickers, S. M. Weiss, C. L. Duvall, *Adv. Mater.* **2016**, *28*, 7984.
- [36] E. J. Anglin, M. P. Schwartz, V. P. Ng, L. A. Perelman, M. J. Sailor, *Langmuir* **2004**, *20*, 11264.
- [37] A. Cifuentes-Rius, A. Ivask, E. Sporleder, I. Kaur, Y. Assan, S. Rao, D. Warther, C. A. Prestidge, J. O. Durand, N. H. Voelcker, *Small* **2017**, *13*, 1701201.
- [38] M. A. Shahbazi, P. V. Almeida, A. Correia, B. Herranz-Blanco, N. Shrestha, E. Makila, J. Salonen, J. Hirvonen, H. A. Santos, *J. Control. Release* **2017**, *249*, 111.
- [39] E. J. Kwon, M. Skalak, A. Bertucci, G. Braun, F. Ricci, E. Ruoslahti, M. J. Sailor, S. N. Bhatia, *Adv. Mater.* **2017**, *29*, 1701527.
- [40] K. J. Christie, C. A. Webber, J. A. Martinez, B. Singh, D. W. Zochodne, *J. Neurosci.* **2010**, *30*, 9306.
- [41] M. S. Kim, A. El-Fiqi, J. W. Kim, H. S. Ahn, H. Kim, Y. J. Son, H. W. Kim, J. K. Hyun, *ACS Appl. Mater. Inter.* **2016**, *8*, 18741.
- [42] A. D. Keefe, S. Pai, A. Ellington, *Nat. Rev. Drug Discov.* **2010**, *9*, 537.
- [43] A. H. Nagahara, M. H. Tuszynski, *Nat. Rev. Drug Discov.* **2011**, *10*, 209.
- [44] Y. Z. Huang, F. J. Hernandez, B. Gu, K. R. Stockdale, K. Nanapaneni, T. E. Scheetz, M. A. Behlke, A. S. Peek, T. Bair, P. H. Giangrande, J. O. McNamara, *Mol. Pharm.* **2012**, *82*, 623.
- [45] M. V. Sofroniew, C. L. Howe, W. C. Mobley, *Annu. Rev. Neurosci.* **2001**, *24*, 1217.
- [46] R. W. Gundersen, J. N. Barrett, *Science* **1979**, *206*, 1079.

- [47] A. Baron-Van Evercooren, H. K. Kleinman, S. Ohno, P. Marangos, J. P. Schwartz, M. E. Dubois-Dalcq, *J. Neurosci. Res.* **1982**, *8*, 179.
- [48] X. J. Yu, G. P. Dillon, R. V. Bellamkonda, *Tissue Eng.* **1999**, *5*, 291.
- [49] Z. Qin, J. Joo, L. Gu, M. J. Sailor, *Part. Part. Syst. Charact.* **2014**, *31*, 252.
- [50] D. Kim, J. M. Zuidema, J. Kang, Y. Pan, L. Wu, D. Warther, B. Arkles, M. J. Sailor, *J. Am. Chem. Soc.* **2016**, *138*, 15106.
- [51] J. Kang, J. Joo, E. J. Kwon, M. Skalak, S. Hussain, Z. G. She, E. Ruoslahti, S. N. Bhatia, M. J. Sailor, *Adv. Mater.* **2016**, *28*, 7962.
- [52] L. Mohiuddin, K. Fernandez, D. R. Tomlinson, P. Fernyhough, *Neurosci. Lett.* **1995**, *185*, 20.
- [53] M. J. Sailor, E. C. Wu, *Adv. Funct. Mater.* **2009**, *19*, 3195.
- [54] J. Wang, T. Kumeria, M. T. Bezem, J. Wang, M. J. Sailor, *ACS Appl. Mater. Inter.* **2018**, *10*, 3200.
- [55] D. Kim, J. Kang, T. Wang, H. G. Ryu, J. M. Zuidema, J. Joo, M. Kim, Y. Huh, J. Jung, K. H. Ahn, K. H. Kim, M. J. Sailor, *Adv. Mater.* **2017**, *29*, 1703309.
- [56] J. Joo, X. Liu, V. R. Kotamraju, E. Ruoslahti, Y. Nam, M. J. Sailor, *ACS Nano* **2015**, *9*, 6233.
- [57] L. Gu, D. J. Hall, Z. Qin, E. Anglin, J. Joo, D. J. Mooney, S. B. Howell, M. J. Sailor, *Nat. Commun.* **2013**, *4*, 2326.
- [58] J. Joo, J. F. Cruz, S. Vijayakumar, J. Grondek, M. J. Sailor, *Adv. Funct. Mater.* **2014**, *24*, 5688.
- [59] J. Salonen, L. Laitinen, A. M. Kaukonen, J. Tuura, M. Bjorkqvist, T. Heikkila, K. Vaha-Heikkila, J. Hirvonen, V. P. Lehto, *J. Control. Release* **2005**, *108*, 362.
- [60] S. Hussain, J. Joo, J. Kang, B. Kim, G. B. Braun, Z. G. She, D. Kim, A. P. Mann, T. Molder, T. Teesalu, S. Carnazza, S. Guglielmino, M. J. Sailor, E. Ruoslahti, *Nat. Biomed. Eng.* **2018**, *2*, 95.
- [61] F. von Burkersroda, L. Schedl, A. Gopferich, *Biomaterials* **2002**, *23*, 4221.
- [62] H. J. Shin, C. H. Lee, I. H. Cho, Y. J. Kim, Y. J. Lee, I. A. Kim, K. D. Park, N. Yui, J. W. Shin, *J. Biomat. Sci-Polym. E* **2006**, *17*, 103.
- [63] X. J. Xin, M. Hussain, J. J. Mao, *Biomaterials* **2007**, *28*, 316.
- [64] C. M. Dumont, M. A. Carlson, M. K. Munsell, A. J. Ciciriello, K. Strnadova, J. Park, B. J. Cummings, A. J. Anderson, L. D. Shea, *Acta Biomater.* **2019**, *86*, 312.
- [65] J. Koffler, W. Zhu, X. Qu, O. Platoshyn, J. N. Dulin, J. Brock, L. Graham, P. Lu, J. Sakamoto, M. Marsala, S. C. Chen, M. H. Tuszynski, *Nat. Med.* **2019**, *25*, 263.
- [66] K. M. Pawelec, J. Koffler, D. Shahriari, A. Galvan, M. H. Tuszynski, J. Sakamoto, *Biomed. Mater.* **2018**, *13*, 044104.
- [67] P. Almqvist, H. Pschera, E. B. Samuelsson, N. O. Lunell, A. Seiger, *Exp. Neurol.* **1994**, *125*, 1.
- [68] J. M. Zuidema, M. C. Hyzinski-Garcia, K. Van Vlasselaer, N. W. Zaccor, G. E. Plopper, A. A. Mongin, R. J. Gilbert, *Biomaterials* **2014**, *35*, 1439.
- [69] A. Hurtado, J. M. Cregg, H. B. Wang, D. F. Wendell, M. Oudega, R. J. Gilbert, J. W. McDonald, *Biomaterials* **2011**, *32*, 6068.
- [70] M. Tamura, J. G. Gu, K. Matsumoto, S. Aota, R. Parsons, K. M. Yamada, *Science* **1998**, *280*, 1614.

TOC



Porous silicon nanoparticles are loaded with bpV(HOpic), a TrkB RNA aptamer, or nerve growth factor using three distinct loading chemistries. They are incorporated into aligned poly(lactic-*co*-glycolic acid) nanofibers using an airbrush, and the nanofiber hybrids release their payloads over varying timescales. The three released payloads maintain their bioactivity as shown by enhanced neurite extension of dorsal root ganglion explants cultured on the hybrid nanofiber scaffolds.

Keywords: neuron guidance; tissue engineering; controlled release; PTEN inhibitor; RNA aptamer; tropomyosin-related kinase receptor type B; Nerve Growth Factor

*Jonathan M. Zuidema, Courtney M. Dumont, Joanna Wang, Wyndham M. Batchelor, Yi-Sheng Lu, Jinyoung Kang, Alessandro Bertucci, Noel M. Ziebarth, Lonnie D. Shea, and Michael J. Sailor**

Porous Silicon Nanoparticles Embedded in Poly(lactic-*co*-glycolic acid) Nanofiber Scaffolds Deliver Neurotrophic Payloads to Enhance Neuronal Growth

Copyright WILEY-VCH Verlag GmbH & Co. KGaA, 69469 Weinheim, Germany, 2018.