

University of Groningen

The learning curve of laparoscopic, robot-assisted and transanal total mesorectal excisions

Burghgraef, Thijs A.; Sikkenk, Daan J.; Verheijen, Paul M.; El Moumni, Mostafa; Hompes, Roel; Consten, Esther C. J.

Published in:
Surgical endoscopy and other interventional techniques

DOI:
[10.1007/s00464-022-09087-z](https://doi.org/10.1007/s00464-022-09087-z)

IMPORTANT NOTE: You are advised to consult the publisher's version (publisher's PDF) if you wish to cite from it. Please check the document version below.

Document Version
Publisher's PDF, also known as Version of record

Publication date:
2022

[Link to publication in University of Groningen/UMCG research database](#)

Citation for published version (APA):

Burghgraef, T. A., Sikkenk, D. J., Verheijen, P. M., El Moumni, M., Hompes, R., & Consten, E. C. J. (2022). The learning curve of laparoscopic, robot-assisted and transanal total mesorectal excisions: a systematic review. *Surgical endoscopy and other interventional techniques*, 36, 6337–6360. <https://doi.org/10.1007/s00464-022-09087-z>

Copyright

Other than for strictly personal use, it is not permitted to download or to forward/distribute the text or part of it without the consent of the author(s) and/or copyright holder(s), unless the work is under an open content license (like Creative Commons).

The publication may also be distributed here under the terms of Article 25fa of the Dutch Copyright Act, indicated by the "Taverne" license. More information can be found on the University of Groningen website: <https://www.rug.nl/library/open-access/self-archiving-pure/taverne-amendment>.

Take-down policy

If you believe that this document breaches copyright please contact us providing details, and we will remove access to the work immediately and investigate your claim.

Downloaded from the University of Groningen/UMCG research database (Pure): <http://www.rug.nl/research/portal>. For technical reasons the number of authors shown on this cover page is limited to 10 maximum.



The learning curve of laparoscopic, robot-assisted and transanal total mesorectal excisions: a systematic review

Thijs A. Burghgraef^{1,2} · Daan J. Sikkenk¹ · Paul M. Verheijen¹ · Mostafa El Moumni² · Roel Hompes³ · Esther C. J. Consten^{1,2}

Received: 21 October 2021 / Accepted: 29 January 2022
© The Author(s) 2022

Abstract

Background The standard treatment of rectal carcinoma is surgical resection according to the total mesorectal excision principle, either by open, laparoscopic, robot-assisted or transanal technique. No clear consensus exists regarding the length of the learning curve for the minimal invasive techniques. This systematic review aims to provide an overview of the current literature regarding the learning curve of minimal invasive TME.

Methods A systematic literature search was performed. PubMed, Embase and Cochrane Library were searched for studies with the primary or secondary aim to assess the learning curve of either laparoscopic, robot-assisted or transanal TME for rectal cancer. The primary outcome was length of the learning curve per minimal invasive technique. Descriptive statistics were used to present results and the MINORS tool was used to assess risk of bias.

Results 45 studies, with 7562 patients, were included in this systematic review. Length of the learning curve based on intra-operative complications, postoperative complications, pathological outcomes, or a composite endpoint using a risk-adjusted CUSUM analysis was 50 procedures for the laparoscopic technique, 32–75 procedures for the robot-assisted technique and 36–54 procedures for the transanal technique. Due to the low quality of studies and a high level of heterogeneity a meta-analysis could not be performed. Heterogeneity was caused by patient-related factors, surgeon-related factors and differences in statistical methods.

Conclusion Current high-quality literature regarding length of the learning curve of minimal invasive TME techniques is scarce. Available literature suggests equal lengths of the learning curves of laparoscopic, robot-assisted and transanal TME. Well-designed studies, using adequate statistical methods are required to properly assess the learning curve, while taking into account patient-related and surgeon-related factors.

Keywords Total mesorectal excision · Laparoscopy · Robot-assisted · Transanal · Learning curve

The cornerstone of therapeutic management of rectal cancer is surgical resection by total mesorectal excision (TME). This can be performed using several surgical approaches: open, laparoscopic (L-TME), robot-assisted (R-TME) and transanal TME (TaTME) [1–4]. Whereas the first TME was

performed using open surgery, minimal invasive approaches are increasingly used since the introduction of laparoscopic rectal resections in the mid 90's. The R-TME and TaTME technique were introduced in the beginning of the 00's and 10's respectively, in order to overcome technical limitations of the L-TME procedure.

With the introduction and implementation of a new surgical approach, surgeons need to climb a learning curve. This is the amount of procedures required to achieve an adequate surgical performance, regarding safety, efficacy and efficiency [5]. The ideal minimal invasive procedure has a short learning curve, and is therefore easy to master. In addition, the period in which the surgeon 'climbs' the learning curve should not result in additional morbidity, worsened oncological outcomes or mortality for the patient [6, 7].

✉ Thijs A. Burghgraef
ta.burghgraef@umcg.nl

¹ Department of Surgery, Meander Medical Center, Maatweg 3, 3813 TZ Amersfoort, the Netherlands

² Department of Surgery, University of Groningen, University Medical Center Groningen, Hanzeplein 1, 9713 GZ Groningen, the Netherlands

³ Department of Surgery, University Medical Center Amsterdam, Location AMC, Amsterdam, the Netherlands

It is suggested that L-TME and TaTME have a relatively long learning curve of around 50–90 procedures per surgeon [8–12], while R-TME is suggested to have a shorter learning curve [13–15]. Despite the number of papers reporting on learning curves of these approaches, the quality of evidence is limited. Patient populations are heterogeneous by including both benign and malignant diseases. Experience with previous techniques is mostly not taken into account, and some studies do not make a clear distinction between colonic and rectal resections. Additionally, multiple designs and statistical methods are used to assess the learning curve. Finally, although systematic reviews are available, some are outdated, or not restricted to rectal cancer surgery, while others do not evaluate the learning curve of all three minimal invasive techniques [16–20].

The aim of this systematic review is two-fold: First, we aim to create an overview of the current available literature regarding the learning curve of L-TME, R-TME and TaTME for patients with rectal carcinoma. Second, we aim to explore the impact of the learning curve on clinical outcomes in L-TME, R-TME and TaTME.

Materials and methods

This systematic review was conducted and reported according to the PRISMA 2020 statement [21]. Approval of the Institutional Review Board (IRB) was deemed unnecessary, due to the nature of the study. Inclusion and exclusion criteria, as well as search strategies, the used critical appraisal tool, and outcomes of interest were prespecified. We did not register a review protocol in advance.

Eligibility criteria

In order to create an overview of studies regarding the learning curve of L-TME, R-TME, and TaTME, studies were deemed eligible if: (1) the studies included patients with primary rectal cancer, or patients with colorectal cancer in which rectal cancer patients could be distinguished, (2) the patients underwent a TME, (3) the primary or secondary aim of the paper was to obtain the learning curve of either L-TME, R-TME or TaTME. Studies were excluded if they: (1) were written in other languages than English, German, French or Dutch, or if the studies (2) did not resemble an original article.

Literature search and study selection

Two researchers independently conducted a systematic search (TAB and DJS) in PubMed, Embase and Cochrane Library on August 10, 2021. The following search terms were used: (rectum cancer OR colorectal cancer OR rectal

OR colorectal) AND (learning curve OR learning), without limiting the search (for example to year of publication). After undoubling, title and abstract of all studies were screened for inclusion, and full text reading of the remaining studies was performed by two researchers independently. Finally, the reference lists of included studies were screened for possible eligible studies. Systematic reviews emerging in the literature search were excluded, but reference lists were screened for possible eligible studies. Disagreement between the two independent researchers was resolved through discussion until consensus was reached.

Data collection

The primary outcome was length of the learning curve for L-TME, R-TME, and TaTME. Secondary outcomes included intraoperative, postoperative and oncological outcomes of patients operated during the learning curve, compared with patients operated after completion of the learning curve. In addition, statistical methods used to obtain the learning curve, as well as the outcome variables used to obtain the learning curve were recorded. A prespecified form was used to capture data of studies. This form contained the following data: author, year, country, study design, surgical technique, number of participating centers and surgeons, number of patients included, exclusion criteria and aim of the study. Additionally, surgeon-based or institute-based learning curve analysis, prior experience with the surgical technique, length of the learning curve based on intraoperative complications, length of the learning curve based on postoperative complications, length of the learning curve based on positive pathological circumferential margin (CRM), length of the learning curve based on operative time, length of the learning curve based on other variables or a compound variable, and used statistical methods for learning curve analysis were registered. Finally, if a comparison was performed between patients operated during the learning curve and after the learning curve was achieved, the following outcomes were compared: intraoperative complications, postoperative complications, positive CRM rate and operative time. All data was extracted by two researchers independently and disagreement was resolved through discussion.

Outcomes

Length of the learning curve was specified as the number of procedures necessary to reach proficiency as identified by the specific study. Since studies used different clinical outcomes and statistical methods to assess proficiency of the surgical technique, length of the learning curve was reported per clinical outcome and statistical method used. Used clinical outcomes were: intraoperative complications; postoperative complications within 30 days; positive CRM

rate, defined as a margin ≤ 1 mm; operative time, defined as time from incision to skin closure, or a composite of multiple clinical outcomes (i.e., conversion, local recurrence and postoperative complications). We registered length of the learning curve for each specific statistical method, and for CUSUM or RA-CUSUM analyses we differentiated between length of the learning curve based on deflection of the graph and stabilization of the graph, as the point at which the learning curve was achieved. Furthermore, a final conclusion per technique regarding length of the learning curve was defined as the reported lengths of the learning curve per technique as estimated only by RA-CUSUM analyses.

Risk of bias

The MINORS tool [22] was used to assess the quality of the studies. Both researchers (TAB and DJS) recorded the data independently. Disagreement was resolved through discussion until consensus was reached.

Results

Study selection

PubMed, Embase and Cochrane Library were searched on August 10, 2021 and yielded 3701 records. After undoubling 2851 records remained. Screening title and abstract for eligibility resulted in 298 records. After full text screening, an additional 253 records were excluded. This resulted in 45 records that were included in this systematic review. Studies were too heterogeneous, both clinically and methodologically, to perform a meta-analysis (Fig. 1).

Study characteristics

The characteristics of included studies are presented in Table 1. Studies were published between 2009 and 2021, with a total of six prospective studies [11, 23–27], 34

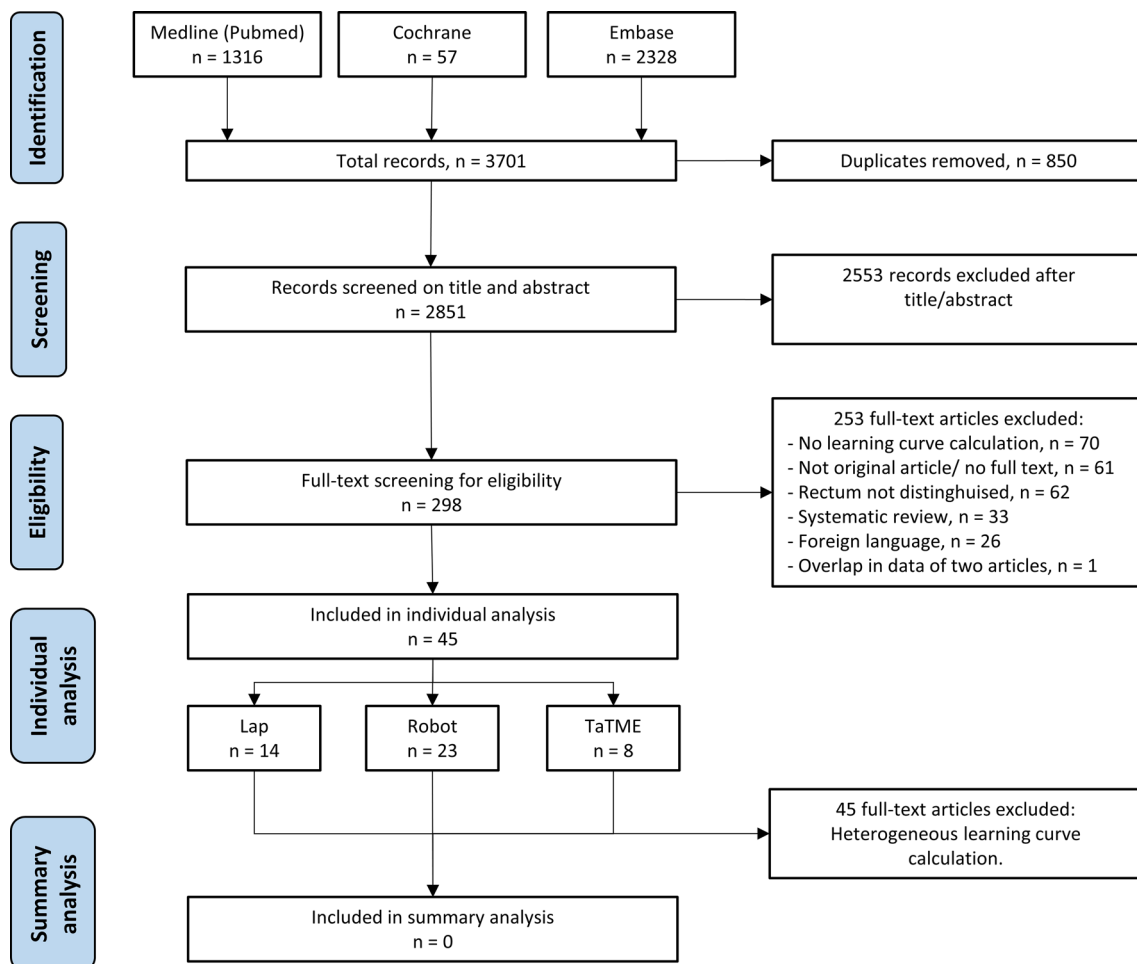


Fig. 1 Flow diagram of study selection. *Lap* Studies involving laparoscopic total mesorectal excision, *Robot* Studies involving robot-assisted total mesorectal excision, *TaTME* Studies involving transanal total mesorectal excision

retrospective studies [9, 10, 12, 14, 15, 28–56], and five studies in which the design was not clearly described [8, 13, 57–59]. Thirteen studies reported on the learning curve of L-TME [10–12, 26, 27, 39–44, 58, 59], twenty on the learning curve of R-TME [13–15, 23–25, 28–35, 52–57], eight on the learning curve of TaTME [8, 9, 36–38, 48–50], and four reported on the comparison of the learning curve of two approaches [45–47, 51].

In total 7562 patients were included in this systematic review. The average number of included patients was 150 for R-TME studies, 168 for TaTME studies and 205 for L-TME studies. Most studies' primary aim was to define the learning curve, though for nine studies it was a secondary aim [26, 27, 29–31, 42, 43, 46, 59]. Thirteen studies reported on institutional learning curves [8, 9, 11, 13, 31–33, 39, 41–43, 49, 59], while the others reported on surgeons' individual learning curves. Previous experience with colorectal surgery was mentioned in twenty-one studies [8–10, 13, 15, 24, 25, 28, 29, 31, 35, 37, 39–42, 45–47, 51–56]. The majority of studies defined exclusion criteria, while seventeen did not exclude patients during the learning curve [8, 13, 14, 23, 27, 29–32, 37, 46, 48, 49, 53–57].

Risk of bias

None of the studies scored high on all criteria of the MINORS tool. Nineteen out of 41 non-comparative studies adequately reported more than half of the required criteria [9–12, 15, 24, 25, 27, 33, 35, 37, 38, 48–50, 53, 55]. Study quality was highest among the TaTME studies, and varied most among the R-TME and L-TME studies. All comparative studies adequately reported more than half of the MINORS criteria [45–47]. One study prospectively calculated the study size [9] and seventeen used adequate statistical analyses [8–10, 12–14, 24, 35, 37, 38, 44, 45, 47, 50, 52, 55]. Regarding the use of adequate definitions of clinical outcome variables, nineteen studies adequately reported unbiased assessment of endpoints [8, 10, 15, 24, 25, 27, 33, 35, 38, 39, 47–57, 60] (Table 2).

Statistical methods of learning curve analyses

Most studies used a combination of different learning curve analyses. No clear learning curve analysis was used in three studies [23, 36, 54], eleven studies used split group analyses (SGA) or sequence analysis for one or more clinical outcome variables [12, 25–28, 39, 41–43, 49, 58, 59] and twelve studies used the moving average analysis (MAA) [10, 12, 14, 30, 40, 44, 45, 47, 58, 60]. Eighteen studies used the CUSUM analysis based on operative time [8, 9, 13, 15, 24, 29, 31–34, 37, 44, 46, 47, 50–53, 55–57]. Two studies used the CUSUM analysis based on intraoperative complications [12, 37], six studies used the CUSUM analysis based on postoperative

complications [11, 12, 32, 37, 45, 48], one study based the CUSUM analysis on positive CRM rate [45] and seven studies used the CUSUM analysis based on a composite outcome [9, 11, 13–15, 34, 35].

One or more risk-adjusted CUSUM analyses (RA-CUSUM) were used in eight studies: three studies used postoperative morbidity [8, 9, 35, 38], two studies used positive CRM rate [10, 35], one study used local recurrence [10]. Another study used conversion [12] and three studies used a composite outcome [14, 15, 35]. Finally, some studies used the first deflection in the (RA-)CUSUM or MAA graph as the point at which proficiency was reached [8, 10, 12, 14, 15, 27, 29, 31, 33, 34, 44, 46, 47, 52, 53, 55–57], while others defined proficiency as the point at which stabilization was reached [9, 13, 24, 30, 35, 37, 38, 40, 58] (Tables 3 and 4).

Length of the learning curve

Despite the fact that all studies assessed the learning curve as their primary or secondary outcome, only 31 studies defined the number of procedures necessary to complete the learning curve based on their results [8, 9, 11, 13–15, 24, 25, 29, 30, 32, 34, 35, 37, 38, 40, 48, 50–53, 55, 56]. CUSUM analyses for length of the learning curve based on operative time differed between 19 and 128 for R-TME, between 51 and 95 for TaTME and between 36 and 42 for L-TME. The only study using RA-CUSUM for length of the learning curve based on operative time showed 87 procedures to be the learning curve for TaTME [38].

Length of the learning curve based on specific clinical outcomes differed widely. Two studies used intraoperative complications as the variable for the calculation of the learning curve: a TaTME study and a L-TME study estimated the learning curve to be respectively 40 and 243 patients using the CUSUM method [12, 37]. Additionally, two studies used positive CRM as oncological variable for the analyses of the learning curve, both using RA-CUSUM analyses: Length of the learning curve was 418 in a R-TME study [35] and 50–70 in a L-TME study [10]. Most studies calculated the learning curve based on postoperative morbidity: using CUSUM analyses lengths differed between 45 and 79 for L-TME studies [11, 12], 40–191 for R-TME studies [32, 35], and 21–108 for TaTME studies [8, 9, 37, 38]. When only taking into account RA-CUSUM analyses, lengths were 191 for R-TME [35] and between 24 and 54 for TaTME [8, 9, 38]. No RA-CUSUM analysis was conducted for L-TME.

Lengths of the learning curve using (RA-)CUSUM analyses based on compound outcome of clinical variables, were 11, 32, 75 and 177 for four R-TME studies and 36 for a TaTME study. No RA-CUSUM analysis was conducted for L-TME. A CUSUM analysis based on compound outcomes showed a length of 50 procedures in a L-TME study [9, 11, 35, 61]. When only taking into account RA-CUSUM

Table 1 Study characteristics of included studies

Author, year	Country	Study design	Technique	Centers	Surgeons	Patients	Exclusion criteria	Learning curve study aim
Kim (2014) [14]	South Korea	Retrospective	R-TME	1	1	167	None	Primary aim
Akmal (2012) [23]	South Korea	Prospective	R-TME	1	1	80	None	Primary aim
Foo (2015) [24]	Hong Kong	Prospective	R-TME	1	1	39	Abdominoperineal resection, Hartmann resection	Primary aim
Sng (2013) [52]	South Korea	Retrospective	R-TME	1	1	197	Low rectal tumor, > 5 cm size Male, T4b, anterior invasion	Primary aim
Jiménez-Rodríguez (2013) [13]	Spain	Not mentioned	R-TME	1	3	43	None	Primary aim
Yamaguchi (2015) [53]	Japan	Retrospective	R-TME	1	1	80	None	Primary aim
Kim (2014) [54]	South Korea	Retrospective	R-TME	1	2	200	None	Primary aim
Odermatt (2017) [55]	United Kingdom	Retrospective	R-TME	1	2	90	None	Primary aim
Kawai (2018) [56]	Japan	Retrospective	R-TME	1	1	131	None	Primary aim
Park (2014) [15]	South Korea	Retrospective	R-TME	1	1	130	Synchronous procedure Lateral lymph node dissection	Primary aim
Byrn (2014) [28]	United States	Retrospective	R-TME	1	1	51	History of laparotomy for abdominopelvic surgery Large risk of conversion, extreme age or comorbidities	Primary aim
Morelli (2016) [29]	Italy	Retrospective	R-TME	1	1	50	None	Secondary aim
Kim (2012) [25]	South Korea	Prospective	R-TME	1	1	62	Acute surgery, acute obstruction History of abdominal surgery, severe cardiopulmonary disease	Primary aim
Kuo (2014) [30]	Taiwan	Retrospective	R-TME	1	1	36	None	Secondary aim
D'Annibale (2013) [31]	Italy	Retrospective	R-TME	1	1	50	None	Secondary aim
Lee (2020) [35]	South Korea	Retrospective	R-TME	1	1	506	No adenocarcinoma, palliative intent	Primary aim
Olthof (2020) [32]	The Netherlands	Retrospective	R-TME	1	2	100	None	Primary aim
Aghayeva (2020) [33]	Turkey	Retrospective	R-TME	1	unclear	96	Abdominoperineal resection Missing value for operative time	Primary aim

Table 1 (continued)

Author, year	Country	Study design	Technique	Centers	Surgeons	Patients	Exclusion criteria	Learning curve study aim
Gachabayov (2020) [57]	USA, South Korea, Spain, Taiwan, Italy, Russia	Not mentioned	R-TME	5	5	235	None	Primary aim
Noh (2020) [34]	South Korea	Retrospective	R-TME	1	5	662	Abdominoperineal resection, other synchronous surgical procedures Palliative intent, R2 resection for macroscopic residual disease	Primary aim
Koedam (2018) [8]	The Netherlands	Not mentioned	TaTME	1	3	138	None	Primary aim
Lee (2018) [9]	United States	Retrospective	TaTME	1	4	87	High rectum carcinoma Benign lesions or lesions fit for local excision	Primary aim
Mege (2018) [36]	France	Retrospective	TaTME	1	1	34	Tumor in mid or high rectum, Abdominoperineal resection	Primary aim
Rubinkiewicz (2020) [37]	Poland	Retrospective	TaTME	1	1	66	None	Primary aim
Persiani, 2020 [38]	Italy	Retrospective	TaTME	1	1	121	TaTME for IBD or locoregional recurrence after previous rectal surgery High rectal cancer	Primary aim
Caycedo-Marulanda (2020) [48]	Canada	Retrospective	TaTME	1	1	100	High rectal cancer	Primary aim
Zeng (2021) [50]	China	Retrospective	TaTME	1	1	171	T4b, stage IV tumors, emergency surgery	Primary aim
Oostendorp, 2021 [49]	The Netherlands	Retrospective	TaTME	6	Unclear	624	None	Primary aim
Balik (2010) [39]	Turkey	Retrospective	L-TME	1	3	284	Emergency surgery, inoperability	Primary aim
Tsai (2015) [40]	Taiwan	Retrospective	L-TME	1	1	39	Abdominoperineal resection, Hartmann resection Conversion and single port laparoscopy	Primary aim

Table 1 (continued)

Author, year	Country	Study design	Technique	Centers	Surgeons	Patients	Exclusion criteria	Learning curve study aim
Bege (2010) [11]	France	Prospective	L-TME	1	1	127	T4 or fixed tumor, synchronous liver resection Abdominoperineal resection Medical contraindication or refusal for laparoscopy	Primary aim
Lujan (2014) [41]	Spain	Retrospective	L-TME	1	2	120	BMI > 35, carcinoma in lower 1/3 of the rectum	Primary aim
Kayano (2011) [58]	Japan	Not mentioned	L-TME	1	1	250	Combined resections (cholecystectomy, hepatectomy, hysterectomy)	Primary aim
Agha, 2008[42]	Germany	Retrospective	L-TME	1	6	300	Acute resection, transanal local resections Local recurrent disease	Secondary aim
Ito (2009) [59]	Japan	Not mentioned	L-TME	1	Multiple	200	T3-T4 tumor, T2 carcinoma in middle or lower rectum	Secondary aim
Son (2010) [12]	South Korea	Retrospective	L-TME	1	1	431	Inoperable disease	Primary aim
Fukunaga (2008) [26]	Japan	Prospective	L-TME	1	1	97	Emergency resection, abdominoperineal resection, obstruction Morbid obesity, prior major lower abdominal surgery Tumor occupying most of the pelvis, carcinoma below peritoneal deflection Lateral lymph node dissection,	Secondary aim
Kim (2014) [10]	South Korea	Retrospective	L-TME	1	1	512	Palliative resection, Abdominoperineal resection, Hartmann resection	Primary aim
Park (2009) [27]	South Korea	Prospective	L-TME	1	1	Unknown	None	Secondary aim
Kuo (2013) [43]	Taiwan	Retrospective	L-TME	1	2	28	Low anterior resection without need for intersphincteric resection	Secondary aim

Table 1 (continued)

Author, year	Country	Study design	Technique	Centers	Surgeons	Patients	Exclusion criteria	Learning curve study aim
Wu (2017) [44]	China	Retrospective	L-TME	1	3	281	ASA 4, BMI > 35, Neoadjuvant therapy, pregnancy History of major abdominal surgery, malignancy within 5 years Metastatic or in situ disease, palliative resection, emergency resection	Primary aim
Melich (2015) [45]	South Korea	Retrospective	R-TME vs L-TME	1	1	92 vs 106	Combined procedure	Primary aim
Morelli (2018) [46]	Italy	Retrospective	R-TME Si vs R-TME Xi	1	1	40 vs 40	None	Secondary aim
Park (2014) [47]	South Korea	Retrospective	R-TME vs L-TME	1	1	89 vs 89	Synchronous operation Lateral lymph node dissection	Primary aim
Wang (2021) [51]	China	Retrospective	R-TME vs L-TME	1	1	40 vs 65	Combined resections, palliative resections, ASA IV, previous abdominal pelvic surgery	Primary aim

TME Total mesorectal excision, *L-TME* Laparoscopic TME, *R-TME* Robot-assisted TME, *TaTME* Transanal TME, *ASA* American Society of Anesthesiology classification, *BMI* Body mass index

analyses based on a compound outcome, length of the learning curve was between 32 and 177 for R-TME, 36 for TaTME, while this was not performed for L-TME.

Finally, taking into account all RA-CUSUM analyses of clinical outcomes only, length of the learning curve was between 50 and 70 for L-TME, 32–418 for R-TME and 36–54 for TaTME.

Before-after learning curve comparison

After establishing a learning curve, 23 studies reported on the comparison of outcomes between patients that had been operated during the learning curve and patients that had been operated after completing the learning curve [8, 9, 11, 13–15, 24, 25, 29, 30, 32, 35, 37, 38, 43, 46, 47, 51–53, 56–58]. Bege et al., who used postoperative complications to assess the learning curve, showed a decline in postoperative morbidity after the learning curve for L-TME was reached [11]. Rubinkiewicz et al., who used postoperative morbidity, intraoperative morbidity, operative time and a composite outcome to assess the learning curve of TaTME, showed a

significant decline in postoperative morbidity and intraoperative morbidity after the learning curve was reached [37]. Operative times were significantly reduced in thirteen studies after the learning curve was reached [8, 14, 15, 24, 33, 37, 38, 46, 47, 51–53, 56, 57] (Table 5). Eight of these studies used operative time to assess the learning curve. While in three R-TME studies and two TaTME studies the learning curve was based on clinical outcomes [8, 14, 15, 35, 38].

Discussion

This systematic review aimed to provide an overview of the current literature regarding the learning curve of L-TME, R-TME and TaTME, and reveals the paucity of high-quality studies. The few available studies using a high-quality RA-CUSUM analysis based on intraoperative complications, postoperative complications or oncological outcomes show similar lengths of the learning curve for L-TME, R-TME, and TaTME. Additionally, although length of the learning curve is suggested to be similar, L-TME and TaTME might

Table 2 Risk of bias assessment according to MINORS tool

Author/year	Clearly stated aim	Inclusion of consecutive patients	Prospective collection of data	Endpoints appropriate to the aim	Unbiased assessment of endpoints	FU appropriate for study aim	Loss to follow up < 5%	Prospective calculation of the study size	Adequate control group	Contemporary groups	Baseline equivalence of groups	Adequate statistical analyses
Kim (2014) [14]	2	0	1	2	1	0	0	0	NA	NA	NA	2
Akmal (2012) [23]	2	2	2	1	0	NA	0	0	NA	NA	NA	1
Foo (2015) [24]	2	1	2	1	2	NA	0	0	NA	NA	NA	2
Sng (2013) [52]	2	1	1	1	2	NA	0	0	NA	NA	NA	2
Jiménez-Rodríguez (2013) [13]	2	2	0	2	1	0	0	0	NA	NA	NA	2
Yamaguchi (2015) [53]	2	2	1	1	2	NA	0	0	NA	NA	NA	2
Kim (2014) [54]	2	2	1	1	2	NA	0	0	NA	NA	NA	2
Odermatt (2017) [55]	2	2	1	2	2	2	0	0	NA	NA	NA	2
Kawai (2018) [56]	2	2	1	1	2	NA	0	0	NA	NA	NA	2
Park (2014) [15]	2	2	1	2	2	1	0	0	NA	NA	NA	2
Byrn (2014) [28]	1	1	1	1	0	NA	0	0	NA	NA	NA	1
Morelli (2016) [29]	2	2	1	1	1	NA	0	0	NA	NA	NA	2
Kim (2012) [25]	2	2	2	1	2	NA	0	0	NA	NA	NA	1
Kuo (2014) [30]	2	0	1	1	1	NA	0	0	NA	NA	NA	1
D'Annibale (2013) [31]	2	2	1	1	1	NA	0	0	NA	NA	NA	1
Lee (2020) [35]	2	2	1	2	2	2	0	0	NA	NA	NA	2
Olthof (2020) [32]	2	2	1	2	2	NA	0	0	NA	NA	NA	2
Aghayeva (2020) [33]	2	2	1	1	2	NA	0	0	NA	NA	NA	2
Gachabayov (2020) [57]	2	2	0	1	2	NA	0	0	NA	NA	NA	2

Table 2 (continued)

Author/year	Clearly stated aim	Inclusion of consecutive patients	Prospective collection of data	Endpoints appropriate to the aim	Unbiased assessment of endpoints	FU appropriate for study aim	Loss to follow up < 5%	Prospective calculation of the study size	Adequate control group	Contemporary groups	Baseline equivalence of groups	Adequate statistical analyses
Noh (2020) [34]	2	2	1	2	2	2	0	0	NA	NA	NA	2
Koedam (2018) [8]	2	2	0	2	2	2	0	0	NA	NA	NA	2
Lee (2018) [9]	2	2	1	2	1	2	0	2	NA	NA	NA	2
Caycedo-Marulanda (2020) [48]	2	2	1	1	2	2	0	0	NA	NA	NA	2
Mege (2018) [36]	2	2	1	1	1	NA	0	0	NA	NA	NA	1
Rubinkiewicz (2020) [37]	2	2	1	2	1	NA	0	0	NA	NA	NA	2
Persiani (2020) [38]	2	2	2	2	2	2	0	0	NA	NA	NA	2
Zeng (2021) [50]	2	2	1	1	2	NA	0	0	NA	NA	NA	2
Oostendorp (2021) [49]	2	2	1	2	2	2	0	0	NA	NA	NA	1
Balik (2010) [39]	2	0	1	1	2	1	0	0	NA	NA	NA	1
Tsai (2015) [40]	2	1	1	1	1	NA	0	0	NA	NA	NA	1
Bege (2010) [11]	1	1	2	2	1	1	0	0	NA	NA	NA	2
Lujan (2014) [41]	2	1	1	1	1	2	0	0	NA	NA	NA	1
Kayano (2011) [58]	2	2	0	1	1	0	0	0	NA	NA	NA	1
Agha (2008) [42]	1	0	1	1	1	NA	0	0	NA	NA	NA	1
Ito (2009) [59]	2	0	0	1	0	0	0	0	NA	NA	NA	1
Son (2010) [12]	2	2	1	2	1	0	0	0	NA	NA	NA	2
Fukunaga (2008) [26]	1	1	2	1	1	NA	0	0	NA	NA	NA	1

Table 2 (continued)

Author/year	Clearly stated aim	Inclusion of consecutive patients	Prospective collection of data	Endpoints appropriate to the aim	Unbiased assessment of endpoints	FU appropriate for study aim	Loss to follow up < 5%	Prospective calculation of the study size	Adequate control group	Contemporary groups	Baseline equivalence of groups	Adequate statistical analyses
Kim (2014) [10]	2	1	0	2	2	2	2	0	NA	NA	NA	2
Park (2009) [27]	1	0	2	2	2	2	0	0	NA	NA	NA	1
Kuo (2013) [43]	2	0	1	1	0	1	0	0	NA	NA	NA	1
Wu (2017) [44]	2	1	1	1	1	NA	0	0	NA	NA	NA	2
Melich (2015) [45]	2	2	1	2	1	0	0	0	2	2	1	2
Morelli (2018) [46]	2	2	1	1	1	NA	0	0	2	1	1	1
Park (2014) [47]	2	1	1	1	2	NA	0	0	2	2	1	2
Wang (2021) [51]	2	1	1	1	2	NA	0	0	2	2	2	1

NA not applicable (Assessment score: 2 = adequately reported, 1 = inadequately reported, 0 = not reported)

Table 3 Results of individual studies regarding statistical analysis and learning curve

Author, year	Technique	Learning curve characteristics				Learning curve analysis				Conclusion according to article			
		Analysis	Previous experience with surgical technique	Variable (IOC)	Analysis	Variable (POC)	Analysis	CRM rate	Analysis		Operative time	Analysis	Other variable
Kim (2014) [14]	R-TIME	Per surgeon	Not mentioned	-	-	-	-	-	Operative time	MAA _p : 33 MAA _s : 72	Combination: Conversion, IOC, POC, CRM+, OT > 2 SD	RA-CUSUM _p : 32	32
Akmal (2012) [23]	R-TIME	Per surgeon	Not mentioned	-	-	-	-	-	-	-	-	-	-
Foo (2015) [24]	R-TIME	Per surgeon	30 robotic RR assisted < 5 open/lap RR	-	-	-	-	-	Operative time	CUSUM _p : 8 CUSUM _s : 25	-	-	25
Sng (2013) [52]	R-TIME	Per surgeon	> 2000 lap CRR > 1000 lap RR	-	-	-	-	-	Console time	CUSUM _p : 35 CUSUM _s : 128	-	-	35
Jiménez-Rodriguez (2013) [13]	R-TIME	Per institute	Long experience in lap Robot training	-	-	-	-	-	Operative time	CUSUM _p : 11 CUSUM _s : 21	Combination: Conversion, IOC, POC, mortality	CUSUM _p : 11 CUSUM _s : 23	23
Yamaguchi (2015) [53]	R-TIME	Per surgeon	Expert in RR	-	-	-	-	-	Operative time	CUSUM _p : 25 CUSUM _s : 50	-	-	25
Kim (2014) [54]	R-TIME	Per surgeon	Surg A 200 open CRR, < 30 lap Surg B 800 open CRR, > 300 lap Robot training	-	-	-	-	-	Operative time	-	-	-	-
Odermatt (2017) [55]	R-TIME	Per surgeon	Surg A: 1500 CRR Surg B: 400 CRR Robot training	-	-	-	-	-	Operative time	CUSUM _p : 7 (Surg A) CUSUM _p : 15 (Surg B)	Morbidity (CD 3b-5)	-	15
Kawai (2018) [56]	R-TIME	Per surgeon	Substantial lap CRR Robot training	-	-	-	-	-	Console time	CUSUM _p : 19 CUSUM _s : 78	-	-	19
Park (2014) [15]	R-TIME	Per surgeon	2 year CRC fellowship 6 lap, 10 open CRR	-	-	-	-	-	Operative time	CUSUM _p : 44 CUSUM _s : 78	Combination: Conversion, RI, < 12 LN, LR, POC	RA-CUSUM _p : 75	75
Byrn (2014) [28]	R-TIME	Per surgeon	1 year staff level experience of lap pelvic dissection	-	-	-	-	-	Operative time	SGA: -	-	-	-

Table 3 (continued)

Author, year	Technique	Learning curve characteristics			Learning curve analysis			Conclusion according to article	
		Analysis	Previous experience with surgical technique	Variable (IOC)	Analysis	Variable (POC)	Analysis		
Morelli (2016) [29]	R-TIME	Per surgeon	> 500 lap procedures	-	-	-	CUSUM _p : 19	-	19
Kim (2012) [25]	R-TIME	Per surgeon	> 20 year experience in open RR	-	-	-	SGA: 20	-	20
Kuo (2014) [30]	R-TIME	Per surgeon	Not mentioned	-	-	-	MAA: 19	-	19
D'Annibale (2013) [31]	R-TIME	Per institute	Not mentioned	-	-	-	Sequence: 25 CUSUM _p : 22	-	-
Lee (2020) [35]	R-TIME	Per surgeon	3000 lap TMEs	-	Morbidity (CD 3-5)	RA-CUSUM _s : 191 CRM+DRM+RA-CUSUM _s : 418	-	Combination: Conversion, CD 3-5, R1, <12 LN or <8 LN (CRT)	RA-CUSUM _p : 177
Olthof (2020) [32]	R-TIME	Per Institute	Intuitive training program Experienced colorectal center	-	CCI Major morbidity (CD 3-5)	CUSUM: 40 CUSUM: 40	Operative time	Anastomotic leakage	CUSUM: 30-40 40
Aghayeva (2020) [33]	R-TIME	Per institute	Not mentioned	-	-	-	Operative time	-	CUSUM _p : 52 52
Gachabayov (2020) [57]	R-TIME	Per surgeon	Not mentioned	-	-	-	Operative time	-	CUSUM _p : 8-25 CUSUM _s : 12-56 -
Noh (2020) [34]	R-TIME	Per surgeon	Not mentioned Different previous lap experience	-	-	-	Operative time	Local failure (CRM +, LR) Surgical failure (conversion, AL)	CUSUM _p : - CUSUM _p : - CUSUM _s : - CUSUM _s : - 23-110
Koedam (2018) [8]	TaTME	Per institute	> 75 lap CRR respect annual > 30 TAMIS annual	-	Morbidity (CD 3b-5)	RA-CUSUM _p : 40	Operative time	-	CUSUM _p : 80 40
Lee (2018) [9]	TaTME	Per institute	Proficient in lap RR Proficient in TAMIS	-	Morbidity RA-CUSUM _s : 36	RA-CUSUM _p : 29 RA-CUSUM _s : 36	Operative time	Combination: R1, incomplete TME quality.	CUSUM _p : 36 CUSUM _s : 51 CUSUM _s : 51 51

Table 3 (continued)

Author, year	Technique	Learning curve characteristics				Learning curve analysis				Conclusion according to article			
		Analysis	Previous experience with surgical technique	Variable (IOC)	Analysis	Variable (POC)	Analysis	CRM rate	Analysis		Operative time	Analysis	Other variable
Caycedo-Marulanda (2020) [48]	TaTME	Per institute	Not mentioned	-	-	-	-	-	-	-	Anastomotic leakage	CUSUM: 50	45–51
Mege (2018) [36]	TaTME	Per surgeon	Not mentioned	-	-	-	-	-	-	-	-	-	-
Rubinkiewicz (2020) [37]	TaTME	Per surgeon	Training in reference centers	Yes	CUSUM _S : 40	Morbidity	CUSUM _S : 30	-	-	Operative time	TME quality	CUSUM _S : -	40
Persiani (2020) [38]	TaTME	Per institute	Not mentioned	-	-	Morbidity	RA- CUSUM _p : 24 RA- CUSUM _S : 69 Bernoulli CUSUM: 21 Reference CUSUM: 108	-	-	Operative time	Reoperation rate	RA- CUSUM _p : 54 RA- CUSUM _S : 54 Bernoulli CUSUM: 31 Reference CUSUM: 69	71
Zeng (2021) [50]	TaTME	Per surgeon	Not mentioned	-	-	Major Morbidity	RA- CUSUM _p : 54 RA- CUSUM _S : 54 Bernoulli CUSUM: 55 Reference CUSUM: 54	-	-	Operative time	Anastomotic leakage	RA- CUSUM _p : 78 RA- CUSUM _S : 78 Bernoulli CUSUM: 42 Reference CUSUM: 42	42–95
Oostendorp (2021) [49]	TaTME	Per institute	Not mentioned	-	-	-	-	-	-	-	Local recurrence	SGA: -	-

POC Postoperative complication, *IOC* Intraoperative complication, *RR* Rectal resection, *CRR* Colorectal resection, *CR* Colon resection, *R-TME* robot-assisted TME, *TaTME* transanal TME, *TAMIS* Transanal minimal invasive surgery, *CUSUM* Cumulative sum analysis, *RA-CUSUM* Risk-adjusted cumulative sum analysis, *CUSUMD* Deflection point in CUSUM, *CUSUMS* Stabilization point in CUSUM, *MAA* Moving average analysis, *MAAS* Moving average stabilization point, *MAAD* Moving average deflection point, *SGA* Split group analysis, *CD* Clavien–Dindo classification, *CRM* Circumferential resection margin, *LN* Lymph nodes, *AL* Anastomotic leakage, *LR* Local recurrence, *AL* Anastomotic leakage, *SSJ* Surgical site infection, *LR* Local recurrence, *CRT* Neoadjuvant chemoradiotherapy, *CCI* Comprehensive complication index

Table 4 Results of individual studies regarding statistical analysis and learning curve

Author, year	Technique	Learning curve characteristics		Learning curve analysis		Variable (IOC)	Variable (POC)	CRM rate	Analysis	Operative time	Analysis	Other variable	Analysis	Conclusion according to article	Length
		Analysis	Previous experience with surgical technique	Analysis	Analysis										
Balik (2010) [39]	L-TME	Per institute	305 open + lap CR	-	-	-	-	-	-	Operative time	-	-	-	-	-
Tsai (2015) [40]	L-TME	Per surgeon	Fellowship completed Little experience in lap	-	-	-	-	-	-	Operative time	MAA: 22	-	-	-	22
Bege (2010) [11]	L-TME	Per Institute	Not mentioned	-	-	Morbidity	CUSUM _p :45	-	-	-	-	Combination (comb): POC, LR, Conversion, R1	CUSUM _p : 50	-	50
Lujan (2014) [41]	L-TME	Per institute	Ample experience in open CR Skilled advanced lap	-	-	-	-	-	-	Operative time	Sequence: - SGA: -	-	-	-	-
Kayano (2011) [58]	L-TME	Per surgeon	Not mentioned	-	-	Morbidity	SGA: 200	-	-	Operative time	MAA: 50	Conversion	SGA: 150	-	-
Agha (2008) [42]	L-TME	Per institute	Experience with lap CR No experience with lap RR	-	-	SSI	SGA: 20	-	-	Operative time	SGA: 40	-	-	-	-
Ito (2009) [59]	L-TME	Per institute	Not mentioned	-	-	Morbidity	SGA: -	-	-	Operative time	SGA: 40	-	-	-	-

Table 4 (continued)

Author, year	Technique	Learning curve analysis										Conclusion according to article	Length	
		Learning curve characteristics	Learning curve characteristics	Learning curve characteristics	Learning curve characteristics	Learning curve characteristics	Learning curve characteristics	Learning curve characteristics	Learning curve characteristics	Learning curve characteristics	Learning curve characteristics			Learning curve characteristics
		Analysis	Previous experience with surgical technique	Variable (IOC)	Analysis	Variable (POC)	Analysis	CRM rate	Analysis	Operative time	Analysis	Other variable	Analysis	
Son (2010) [12]	L-TME	Per surgeon	Not mentioned	Yes	CUSUM _p : 243	Morbidity	CUSUM _p : 79	-	-	Operative time	MAA:61	Conversion	RA-CUSUM _p : 61 (Conv)	79
Fukunaga (2008) [26]	L-TME	Per surgeon	Not mentioned	-	-	-	-	-	-	Operative time	Sequence: -	Transfusion volume	SGA:75 (Transfusion volume)	-
Kim (2014) [10]	L-TME	Per surgeon	A: Fast experience B: Trained by A	-	-	-	CRM+	RA-CUSUM _p :50 (A) RA-CUSUM _p :70 (B)	MAA _A : 90 MAA _B : 90	Operative time	LR	LR	RA-CUSUM _p :110 (A) RA-CUSUM _p : 110 (B)	110
Park (2009) [27]	L-TME	Per surgeon	Not mentioned	-	-	-	-	-	MAA: 30	Operative time	LR	Conversion	SGA: 69 (LR) CUSUM _p : 13 (Conversion)	69
Kuo (2013) [43]	L-TME	Per institute	Not mentioned	-	-	-	-	-	SGA: 17	Operative time	-	-	-	17
Wu (2017) [44]	L-TME	Unclear	Not mentioned	-	-	-	-	-	CUSUM _p : 36-42 MAA: 36-47	Operative time	-	-	-	40
Melich (2015) [45]	R-TME vs L-TME	Per surgeon	700 open CR, 50 open RR, 150 lap CR	-	-	AL, intra-abdominal abscess	CRM+	CUSUM: -	MAA: -	Operative time	-	-	-	-
Morelli (2018) [46]	R-TMESi vs R-TME Xi	Per surgeon	> 100 RR > 100 lap surgery	-	-	-	-	-	CUSUM _p : 19	Operative time	-	-	-	19

Table 4 (continued)

Author, year	Technique	Learning curve characteristics		Learning curve analysis				Conclusion according to article					
		Analysis	Previous experience with surgical technique	Variable (IOC)	Analysis	Variable (POC)	Analysis	CRM rate	Operative time	Analysis	Other variable	Analysis	Length
Park (2014) [47]	R-TME vs L-TME	Per surgeon	2 year lap CRR fellowship	-	-	-	-	-	Operative time	CUSUM _D : 44 (robot) MAA: 21 (robot) MAA: 69 (lap) CUSUM _D : 41 (lap)	-	-	44 (robot) 41 (lap)
	R-TME vs L-TME	Per surgeon	> 300 open CRR > 150 lap CRR Robot training	-	-	-	-	-	Operative time	CUSUM _D : 17 (rob) CUSUM _D : 34 (lap)	-	-	17 (rob) 34 (lap)

POC Postoperative complication, IOC Intraoperative complication, RR Rectal resection, CRR Colorectal resection, lap Laparoscopy, TAMIS Transanal minimal invasive surgery, CUSUM Cumulative sum analysis, RA-CUSUM Risk-adjusted cumulative sum analysis, CUSUMD Deflection point in CUSUM, CUSUMS Stabilization point in CUSUM, MAA Moving average analysis, MAAS Moving average stabilization point, MAAD Moving average deflection point, SGA Split group analysis, CD Clavien-Dindo classification, CRM Circumferential resection margin, LN Lymph nodes, AL Anastomatic leakage, LR Local recurrence, SSJ Surgical site infection, LR Local recurrence, CRT Neoadjuvant chemoradiotherapy, R-TME robot assisted TME, L-TME laparoscopic TME

Table 5 Comparison of outcomes during the learning curve and after the learning curve

Author, year	Comparison	Technique	During learning curve				After learning curve			
			Intraop complications	Postop complications	CRM+	Operative time	Intraop complications	Postop complications	CRM+	Operative time
Kim (2014) [14]	32 vs 135	R-TME	3 (9.4%)	5 (15.6%)	3 (9.4%)	252 (42) *	7 (5.2%)	23 (17.0%)	5 (3.7%)	203 (46) *
Foo (2015) [24]	25 vs 14	R-TME	–	4 (16%)	0	446 (102) *	–	0	2 (14.3%)	311 (165) *
Sng (2013) [52]	35 vs 162	R-TME	–	6 (17.1%)	0	265 (190–470) *	–	68 (42.0%)	2 (1.2%)	270 (145–515) *
Jiménez-Rodríguez (2013) [13]	23 vs 20	R-TME	3 (13.0%)	5 (21.7%)	–	189 (39)	0	1 (5.0%)	–	208 (44)
Yamaguchi (2015) [53]	25 vs 55	R-TME	–	3 (12.0%)	–	415 (156–683) *	–	5 (9.1%)	–	240 (135–529) *
Kawai (2018) [56]	19 vs 111	R-TME	–	2 (11.8%)	–	305 (111) *	–	13 (11.7%)	–	227 (112) *
Park (2014) [15]	78 vs 52	R-TME	–	8 (10.3%)	6 (7.7%)	212 (110–338) *	–	15 (28.8%)	3 (5.8%)	182 (109–376) *
Morelli, 2016[29]	19 vs 31	R-TME	–	7 (35.0%)	–	–	–	9 (29.0%)	–	–
Kim (2012) [25]	20 vs 42	R-TME	–	3 (15.0%)	–	454 (112)	–	5 (11.9%)	–	359 (62)
Kuo (2014) [30]	19 vs 17	R-TME	–	–	1 (5.3%)	520 (360–720)	–	–	3 (17.6%)	448 (315–585)
Lee (2020) [35]	177 vs 329	R-TME	–	48 (27.1%)	10 (5.4%)	361 (313–432)	–	77 (23.5%)	19 (5.9%)	337 (292–398)
Aghayeva (2020) [33]	52 vs 44	R-TME	–	15 (28.8%)	2 (3.9%)	380 (109) *	–	7 (15.9%)	1 (2.7%)	323 (103) *
Gachabayov (2020) [57]	83 vs 152	R-TME	–	20 (24.1%)	–	244 (123) *	–	51 (33.5%)	–	192 (100) *
Koedam (2018) [8]	40 vs 98	TaTME	–	23 (57.5%)	1 (2.5%)	199 (95–329) *	–	53 (54.1%)	1 (1.0%)	153 (80–261) *
Lee (2018) [9]	51 vs 36	TaTME	6 (12%)	23 (45%)	2 (4%)	278 (84)	2 (6%)	15 (42%)	0	270 (73)
Rubinkiewicz (2020) [37]	40 vs 26	TaTME	5 (20%) *	13 (33%) *	–	270 (240–300) *	1 (13%) *	2 (8%) *	–	210 (170–240) *
Persiani (2020) [38]	69 vs 52 87 vs 34	TaTME	–	31 (45%)	–	–	–	15 (25%)	–	–
Bege (2010) [11]	50 vs 77	L-TME	–	26 (52%) *	5 (10%)	445 (117)	–	27 (35.1%) *	7 (9%)	414 (97)
Kayano (2011) [58]	50 vs 200	L-TME	–	14 (28%)	0	–	–	44 (22%)	0	–
Kuo (2013) [43]	17 vs 11	L-TME	–	–	3 (17.6%)	402 (210–570) *	–	–	1 (9.1%)	331 (210–450)
Morelli (2018) [46](Si)	19 vs 21	R-TME	–	7 (36.8%)	–	335 (64) *	–	7 (33.3%)	–	289 (42) *
Morelli (2018) [46](Xi)	19 vs 21	R-TME	–	4 (21.1%)	–	305 (51) *	–	6 (28.6%)	–	264 (39) *
Park (2014) [47]	44 vs 45	R-TME	–	5 (11.4%)	4 (9.1%)	230 (49) *	–	4 (8.9%)	2 (4.4%)	188 (53) *
Park (2014) [47]	41 vs 48	L-TME	–	8 (19.5%)	2 (4.9%)	242 (81) *	–	15 (31.3%)	4 (8.3%)	169 (53) *
Wang (2021) [51]	17 vs 23	R-TME	–	1 (5.9%)	1 (5.9%)	361 (41) *	–	2 (8.7%)	1 (4.3%)	324 (43) *
Wang (2021) [51]	34 vs 31	L-TME	–	2 (5.9%)	0 (0.0%)	338 (47) *	–	2 (6.5%)	0 (0.0%)	302 (53) *

CRM Circumferential resection margin 1 is composed outcome of CRM and DRM. * Significant difference between during and after learning curve. L-TME laparoscopic TME, R-TME robot-assisted TME, TaTME transanal TME

bear the risk of additional morbidity while obtaining the learning curve.

Only one L-TME study, three R-TME studies and three TaTME studies used the RA-CUSUM analysis based on clinically relevant outcomes such as intraoperative morbidity, postoperative morbidity or oncological outcomes [8, 9, 12, 14, 15, 35, 38]. Length of the learning curve was 50–70 for L-TME, 32–418 for R-TME and 36–54 for TaTME. This might suggest that the learning curve for R-TME is considerably longer than the learning curve of L-TME and TaTME. However, the results are influenced by the study of Lee et al., who found a learning curve of 177–418 procedures for R-TME [35]. As the authors state in their discussion, the substantial length of the learning curve might be due to the high number of examined cases: with increasing number of consecutive cases, length of the learning curve increases as well [5, 35, 62]. Taking this into account, the learning curve shows similar lengths between techniques: 50–70 procedures for L-TME, 32–75 procedures for R-TME and 36–54 procedures for TaTME [9, 11, 13–15]. This is in line with other systematic reviews evaluating the learning curve of minimal invasive techniques. A systematic review estimated the learning curve to be between 30 and 50 procedures in TaTME [16], and another systematic review estimated the learning curve of R-TME to be 37 procedures [17]. Furthermore, two systematic reviews compared length of the learning curve between L-TME and R-TME. One included studies with colorectal patients, both having benign and malign disease and reported a length between 5 and 310 for L-TME and 15–30 for R-TME [19]. A more recent systematic review only included studies with surgeons without laparoscopic experience and showed equal length of the learning curve: 44–55 for L-TME, and 41–55 for R-TME [20].

Although the length of the learning curve might not differ between the three techniques, L-TME and TaTME might bear the risk of additional morbidity while obtaining the learning curve. A L-TME and a TaTME study show higher rates of intraoperative and postoperative complications before reaching the learning curve, while no R-TME study shows a difference between these two phases [11, 18, 37]. Additionally, a systematic review comparing outcomes before and after the learning curve of TaTME showed less intraoperative complications, less anastomotic leakages and better quality of the TME specimen after the learning curve was obtained [16]. The evidence is scarce, but this might be in line with recently published data showing additional morbidity and higher local recurrence rates during the learning curve of TaTME [49, 50, 63–65]. This has also been suggested in a study assessing the learning curve of L-TME [10]. Perhaps the learning curve of L-TME and TaTME bear the risk of worsened oncological outcomes as these techniques differ significantly from the preceding ‘standard’ technique, while R-TME shows a high degree of similarity

with the preceding L-TME technique. Subsequently, since most surgeons starting with R-TME have preceding experience with the L-TME technique, this influences the learning curve. While, on the other hand, surgeons starting with L-TME or TaTME start with a completely new technique, which might cause the additional morbidity during the learning curve.

The statements regarding length of the learning curve and additional morbidity during the learning curve should be interpreted cautious. Since, only limited amount of high-quality evidence exists, with lack of comparative studies, and a large amount of heterogeneity among studies. This is mainly caused by differences in patient-related factors, surgeon-related factors and statistical methods. First, regarding patient-related factors, inclusion- and exclusion criteria differ among studies, resulting in selection bias between studies. Furthermore, case-mix changes over the course of the learning curve: mostly an overrepresentation of “easy” patients is seen while climbing the learning curve, and more “difficult” patients are operated at the middle of the learning curve [14, 15]. Although case-mix can be controlled for by using a risk-adjusted analysis using the RA-CUSUM, this is only performed in a small number of studies.

Secondly, heterogeneity due to surgeon-related factors among studies exists as well: while some studies report on learning curves for individual surgeons, others report on institutional learning curves. As institutional learning curves might indicate the experience of the whole surgical team, they fail to address differences between individual surgeons. In addition, it is known that the first surgeon mastering the technique within an institution has a longer learning curve than the ones following, due to the institutional experience [66]. Furthermore, as experience with the minimal invasive technique and TME in general influences the learning curve, it is important to describe this. And although most studies reported the experience of the surgeon with the minimal invasive technique, details were lacking. Young surgeons who are at the start of their career, might have a longer learning curve than senior surgeons mastering minimal invasive surgery since the latter might have experience in performing open or L-TME [67]. Additionally, as R-TME and TaTME have been introduced 10–15 years later than L-TME, most studies addressing the learning curve of R-TME and TaTME included surgeons who already had experience with L-TME. This might be an important confounder while assessing the learning curve of L-TME with R-TME or TaTME, but it is inherent to the clinical practice. Finally, since TaTME is generally not used for an abdominoperineal resection, while this is performed using L-TME or R-TME, differences regarding the indication of the technique complicate the comparability of these techniques.

Thirdly, regarding heterogeneity among studies caused by the used statistical analyses, differences could be due to

the used outcome measure to establish the learning curve, the used statistical technique and the used cut-off point. Regarding the used outcome measure to establish the learning curve, operative time is often used for the learning curve. However the outcome is said to be a poor surrogate for clinical outcomes, and mere a reflection of efficiency [5, 68]. Instead, clinical outcomes that are of interest for patients should be used to assess the learning curve [5, 68]. For example, intraoperative complications, major postoperative complications [69], positive CRM rate and for the long term local recurrence rate [70]. Additionally, in order to provide comparable outcomes, clear definitions according to international standards should be used [71].

Regarding the used statistical technique, several methods for the analyses are used: split group analysis (SGA), moving average analysis (MAA), CUSUM and RA-CUSUM. For SGA, patients are arbitrarily divided into two or more groups, based on the chronological order. Since these learning curves are dependent on how groups were divided, it could be doubted whether SGA is suitable for analyzing learning curves [5, 28, 39, 41]. MAA learning curves are based on operative time alone. As operative time might not be an adequate indicator of proficiency, this technique might not be suitable either [72]. CUSUM and RA-CUSUM analyses are more complex methods used to continuously monitor outcomes. The CUSUM is a chronically ordered cumulative sum of the difference between the outcome of the procedure and the average of the studied cohort or a predefined cut-off point based on literature [14, 15]. The RA-CUSUM analysis is the more sophisticated method, correcting for case-mix that may influence the risk of an event [14, 15, 35, 73]. However, both methods have been developed to monitor processes known to be adequate, while signaling inadequacy. For surgeons carrying out a procedure they have not yet performed regularly the learning curve CUSUM (LC-CUSUM) might be more suitable. This analysis assumes inadequacy of the surgeon, while signaling adequacy [62]. This method could be used when the surgeon has no experience with the procedure, as is the case with young surgeons starting with L-TME or R-TME. Or it can be used for describing the learning curve of an experienced colorectal surgeon starting with TaTME, since this procedure is to a large extent different from the “top-down” approach used in open, L-TME and R-TME.

Finally, regarding the used cut-off points, all CUSUM methods can be performed using limits based on averages of the cohort or using literature-based limits. Using averages of the cohort complicates comparison with other studies. And, as mentioned earlier, using averages causes the length of the learning curve to increase with larger cohort size [5, 62]. Therefore, literature-based limits are preferred. Furthermore, the point at which ‘proficiency’ is reached influences the length of the learning curve as well.

Studies used two different points to identify proficiency: the point at which the graph deflects or the point at which a stabilization occurs. Both methods are used, while different outcomes are produced [13, 24, 52]. Therefore, it has been proposed that a learning plateau (i.e., stabilization) should reach a predefined competency level, based on estimates available in literature [5]. As not all studies included in this systematic review provided the point of stabilization, while the point of deflection was provided in every study, this was used in our analysis for assessing the length of the learning curve.

Although this is the first systematic review to provide an overview of the literature regarding the learning curves of all three minimal invasive techniques of TME and the methods used to establish them, it cannot draw a definite conclusion regarding differences in length of the learning curves and differences in additional morbidity during the learning curve of L-TME, R-TME and TaTME. Clearly, more high-quality studies are necessary to shed light on the learning curve of minimally invasive techniques for rectal resections. We suggest that this should preferably be performed with comparative studies, while controlling for patient-related factors (i.e., risk-adjusted analysis), and surgeon-related factors such as experience with TME in general and experience with the specific minimal invasive technique. In addition, if former experience with the TME procedure is limited (i.e., beginning surgeon or adhering to a new technique like TaTME) the LC-CUSUM should be used. Furthermore, we propose that learning curves should be established for individual surgeons, based on the following clinically relevant outcome variables: intraoperative morbidity, (major) postoperative morbidity and positive CRM. Additionally, clear outcome definitions should be reported and learning curves should be estimated using literature-based limits. Finally, comparison of outcomes during and after the learning curve should be performed, to investigate whether the learning curve is associated with additional morbidity.

Author contributions TAB, ECJC, PMV, MeIM and RH contributed to the study conception and design, literature search and data analysis was performed by TAB and DJS. The first draft was written by TAB, and all authors critically revised the work.

Funding No funding was received for conducting this study.

Data availability Data is available on request, this includes template data collection forms, data extracted from included studies, data used for analyses and any other materials used in the review.

Code availability Not applicable.

Declarations

Disclosure Paulus Menno Verheijen and Esther Catharina Josephina Consten receive fees from Intuitive Surgical. Roel Hompes receives fees from Applied Medical. Thijs Adriaan Burghgraef, Daan Jeroen Sikkenk and Mostafa El Moumni have no relevant financial or non-financial interests to disclose.

Ethical approval Not applicable.

Consent to participate Not applicable.

Consent for publication Not applicable.

Open Access This article is licensed under a Creative Commons Attribution 4.0 International License, which permits use, sharing, adaptation, distribution and reproduction in any medium or format, as long as you give appropriate credit to the original author(s) and the source, provide a link to the Creative Commons licence, and indicate if changes were made. The images or other third party material in this article are included in the article's Creative Commons licence, unless indicated otherwise in a credit line to the material. If material is not included in the article's Creative Commons licence and your intended use is not permitted by statutory regulation or exceeds the permitted use, you will need to obtain permission directly from the copyright holder. To view a copy of this licence, visit <http://creativecommons.org/licenses/by/4.0/>.

References

1. Heald RJ, Ryall RDH (1986) Recurrence and survival after total mesorectal excision for rectal cancer. *Lancet*. [https://doi.org/10.1016/S0140-6736\(86\)91510-2](https://doi.org/10.1016/S0140-6736(86)91510-2)
2. van der Pas MHGM, Haglind E, Cuesta MA, Fürst A, Lacy AM, Hop WCJ, Bonjer HJ (2013) Laparoscopic versus open surgery for rectal cancer (COLOR II): Short-term outcomes of a randomised, phase 3 trial. *Lancet Oncol* 14:210–218. [https://doi.org/10.1016/S1470-2045\(13\)70016-0](https://doi.org/10.1016/S1470-2045(13)70016-0)
3. Jayne D, Pigazzi A, Marshall H, Croft J, Corrigan N, Copeland J, Quirke P, West N, Rautio T, Thomassen N, Tilney H, Gudgeon M, Pietro BP, Edlin R, Hulme C, Brown J (2017) Effect of robotic-assisted vs conventional laparoscopic surgery on risk of conversion to open laparotomy among patients undergoing resection for rectal cancer. *JAMA* 318:1569. <https://doi.org/10.1001/jama.2017.7219>
4. Detering R, Roodbeen SX, van Oostendorp SE, Dekker JWT, Sietses C, Bemelman WA, Tanis PJ, Hompes R, Tuynman JB, Aalbers AGJ, Beets-Tan RGH, den Boer FC, Breukink SO, Coene PPLO, Doornebosch PG, Gelderblom AJ, Karsten TM, Ledebor M, Manusama ER, Marijnen CAM, Nagtegaal ID, Peeters KCMJ, Tollenaar RAEM, van de Velde CJH, Wagner A, Westerterp M, van Westreenen HL (2019) Three-year nationwide experience with transanal total mesorectal excision for rectal cancer in the netherlands: a propensity score-matched comparison with conventional laparoscopic total mesorectal excision. *J Am Coll Surg* 228:235–244.e1. <https://doi.org/10.1016/j.jamcollsurg.2018.12.016>
5. Khan N, Abboudi H, Khan MS, Dasgupta P, Ahmed K (2014) Measuring the surgical “learning curve”: methods, variables and competency. *BJU Int* 113:504–508. <https://doi.org/10.1111/bju.12197>
6. State of New York Department of Health Memorandum - series 92–20. <https://www.health.ny.gov/professionals>. Accessed 22 Jun 2021
7. Le Morvan P, Stock B (2005) Medical learning curves and the Kantian ideal. *J Med Ethics* 31:513–518. <https://doi.org/10.1136/jme.2004.009316>
8. Koedam TWA, Velcamp Helbach M, van de Ven PM, Kruij PM, van Heek NT, Bonjer HJ, Tuynman JB, Sietses C (2018) Transanal total mesorectal excision for rectal cancer: evaluation of the learning curve. *Tech Coloproctol* 22:279–287. <https://doi.org/10.1007/s10151-018-1771-8>
9. Lee L, Kelly J, Nassif GJ, DeBeche-Adams TC, Albert MR, Monson JRTT (2018) Defining the learning curve for transanal total mesorectal excision for rectal adenocarcinoma. *Surg Endosc Other Interv Tech*. <https://doi.org/10.1007/s00464-018-6360-4>
10. Kim CH, Kim HJ, Huh JW, Kim YJ, Kim HR (2014) Learning curve of laparoscopic low anterior resection in terms of local recurrence. *J Surg Oncol* 110:989–996. <https://doi.org/10.1002/jso.23757>
11. Bege T, Lelong B, Esterni B, Turrini O, Guiramand J, Francon D, Mokart D, Houvenaeghel G, Giovannini M, Delperro JR (2010) The learning curve for the laparoscopic approach to conservative mesorectal excision for rectal cancer: Lessons drawn from a single institution's experience. *Ann Surg* 251:249–253. <https://doi.org/10.1097/SLA.0b013e3181b7fdb0>
12. Son G-M, Kim J-G, Lee J-C, Suh Y-J, Cho H-M, Lee Y-S, Lee I-K, Chun C-S (2010) Multidimensional analysis of the learning curve for laparoscopic rectal cancer surgery. *J Laparoendosc Adv Surg Tech* 20:609–617
13. Jiménez-Rodríguez RM, Díaz-Pavón JM, de la Portilla de Juan F, Prendes-Sillero E, Dussort HC, Padillo J (2013) Learning curve for robotic-assisted laparoscopic rectal cancer surgery. *Int J Colorectal Dis* 28:815–821. <https://doi.org/10.1007/s00384-012-1620-6>
14. Kim HJ, Choi G-SS, Park JS, Park SY (2014) Multidimensional analysis of the learning curve for robotic total mesorectal excision for rectal cancer: Lessons from a single surgeon's experience. *Dis Colon Rectum* 57:1066–1074. <https://doi.org/10.1097/DCR.000000000000174>
15. Park EJ, Kim CW, Cho MS, Baik SH, Kim DW, Min BS, Lee KY, Kim NK (2014) Multidimensional analyses of the learning curve of robotic low anterior resection for rectal cancer: 3-phase learning process comparison. *Surg Endosc* 28:2821–2831. <https://doi.org/10.1007/s00464-014-3569-8>
16. Lau SYC, Choy KT, Yang TWW, Heriot A, Warrior SK, Guest GD, Kong JC (2021) Defining the learning curve of transanal total mesorectal excision: a systematic review and meta-analysis. *ANZ J Surg*.
17. Jiménez-rodríguez RM, Rubio-Dorado-Manzanares M, Díaz-pavón JM, Reyes-díaz ML, Vazquez-Monchul JM, Garcia-Cabrera AM, Padillo J, De la Portilla F, Portilla F De, R.M. J-R, M. R-D-M, J.M. D-P, M.L. R-D, J.M. V-M, A.M. G-C, J. P, F. D la P, Jiménez-rodríguez RM, Rubio-Dorado-Manzanares M, Díaz-pavón JM, Reyes-díaz ML, Vazquez-Monchul JM, Garcia-Cabrera AM, Padillo J, De la Portilla F, Jimenez-Rodriguez RM, Rubio-Dorado-Manzanares M, Diaz-Pavon JM, Reyes-Diaz ML, Vazquez-Monchul JM, Garcia-Cabrera AM, Padillo J, De la Portilla F (2016) Learning curve in robotic rectal cancer surgery: current state of affairs. *Int J Colorectal Dis* 31:1807–1815. <https://doi.org/10.1007/s00384-016-2660-0>
18. Gachabayov M, You K, Kuo LJ, Kim SH, Cianchi F, Yamaguchi T, Staderini F, Jimenez-Rodriguez R, Bergamaschi R (2019) Meta-analysis of the impact of the learning curve in robotic rectal cancer surgery on histopathologic outcomes. *Surg Technol Int* 34:139–155

19. Barrie J, Jayne DG, Wright J, Murray CJC, Collinson FJ, Pavitt SH (2014) Attaining surgical competency and its implications in surgical clinical trial design: a systematic review of the learning curve in laparoscopic and robot-assisted laparoscopic colorectal cancer surgery. *Ann Surg Oncol* 21:829–840
20. Flynn J, Larach JT, Kong JCH, Waters PS, Warriar SK, Heriot A (2021) The learning curve in robotic colorectal surgery compared with laparoscopic colorectal surgery: a systematic review. *Color Dis* 23:2806–2820
21. Page MJ, McKenzie JE, Bossuyt PM, Boutron I, Hoffmann TC, Mulrow CD, Shamseer L, Tetzlaff JM, Akl EA, Brennan SE, Chou R, Glanville J, Grimshaw JM, Hróbjartsson A, Lalu MM, Li T, Loder EW, Mayo-Wilson E, McDonald S, McGuinness LA, Stewart LA, Thomas J, Tricco AC, Welch VA, Whiting P, Moher D (2021) The PRISMA 2020 statement: An updated guideline for reporting systematic reviews. *BMJ* 372
22. Slim K, Nini E, Forestier D, Kwiatkowski F, Panis Y, Chipponi J (2003) Methodological index for non-randomized studies (Minors): development and validation of a new instrument. *ANZ J Surg* 73:712–716. <https://doi.org/10.1046/j.1445-2197.2003.02748.x>
23. Akmal Y, Baek J-HH, McKenzie S, Garcia-Aguilar J, Pigazzi A (2012) Robot-assisted total mesorectal excision: is there a learning curve? *Surg Endosc* 26:2471–2476. <https://doi.org/10.1007/s00464-012-2216-5>
24. Foo CC, Law WL (2015) The learning curve of robotic-assisted low rectal resection of a novice rectal surgeon. *World J Surg* 40:456–462. <https://doi.org/10.1007/s00268-015-3251-x>
25. Kim YW, Lee HM, Kim NK, Min BS, Lee KY (2012) The learning curve for robot-assisted total mesorectal excision for rectal cancer. *Surg Laparosc Endosc Percutaneous Tech* 22:400–405. <https://doi.org/10.1097/SLE.0b013e3182622c2d>
26. Fukunaga Y, Higashino M, Tanimura S, Takemura M, Osugi H (2008) Laparoscopic colorectal surgery for neoplasm. A large series by a single surgeon. *Surg Endosc Other Interv Tech* 22:1452–1458
27. Park IJ, Choi G-S, Lim K-H, Kang B-M, Jun S-H (2009) Multi-dimensional analysis of the learning curve for laparoscopic colorectal surgery: lessons from 1,000 cases of laparoscopic colorectal surgery. *Surg Endosc Other Interv Tech* 23:839–846. <https://doi.org/10.1007/s00464-008-0259-4>
28. Byrn JC, Hrabe JE, Charlton ME (2014) An initial experience with 85 consecutive robotic-assisted rectal dissections: improved operating times and lower costs with experience. *Surg Endosc* 28:3101–3107. <https://doi.org/10.1007/s00464-014-3591-x>
29. Morelli L, Guadagni S, Lorenzoni V, Di Franco G, Cobuccio L, Palmeri M, Caprili G, D'Isidoro C, Moglia A, Ferrari V, Di Candio G, Mosca F, Turchetti G, D'Isidoro C, Moglia A, Ferrari V, Di Candio G, Mosca F, Turchetti G (2016) Robot-assisted versus laparoscopic rectal resection for cancer in a single surgeon's experience: a cost analysis covering the initial 50 robotic cases with the da Vinci Si. *Int J Colorectal Dis* 31:1639–1648. <https://doi.org/10.1007/s00384-016-2631-5>
30. Kuo L-JJ, Lin Y-KK, Chang C-CC, Tai C-JJ, Chiou J-FF, Chang Y-JJ (2014) Clinical outcomes of robot-assisted intersphincteric resection for low rectal cancer: Comparison with conventional laparoscopy and multifactorial analysis of the learning curve for robotic surgery. *Int J Colorectal Dis* 29:555–562. <https://doi.org/10.1007/s00384-014-1841-y>
31. D'Annibale A, Pernazza G, Monsellato I, Pende V, Lucandri G, Mazzocchi P, Alfano G, D'Annibale A, Pernazza G, Monsellato I, Pende V, Lucandri G, Mazzocchi P, Alfano G (2013) Total mesorectal excision: a comparison of oncological and functional outcomes between robotic and laparoscopic surgery for rectal cancer. *Surg Endosc* 27:1887–1895. <https://doi.org/10.1007/s00464-012-2731-4>
32. Olthof PB, Giesen LJJ, Vijfvinkel TS, Roos D, Dekker JWT (2020) Transition from laparoscopic to robotic rectal resection: outcomes and learning curve of the initial 100 cases. *Surg Endosc* 1:3. <https://doi.org/10.1007/s00464-020-07731-0>
33. Aghayeva A, Baca B (2020) Robotic sphincter saving rectal cancer surgery: a learning curve analysis. *Int J Med Robot Comput Assist Surg*. <https://doi.org/10.1002/rcs.2112>
34. Noh GT, Han M, Hur H, Baik SH, Lee KY, Kim NK, Min BS (2020) Impact of laparoscopic surgical experience on the learning curve of robotic rectal cancer surgery. *Surg Endosc* 1:3. <https://doi.org/10.1007/s00464-020-08059-5>
35. Lee JM, Yang SY, Han YD, Cho MS, Hur H, Min BS, Lee KY, Kim NK (2020) Can better surgical outcomes be obtained in the learning process of robotic rectal cancer surgery? a propensity score-matched comparison between learning phases. *Surg Endosc* 1:3. <https://doi.org/10.1007/s00464-020-07445-3>
36. Mege D, Hain E, Lakkis Z, Maggiori L, Prost à la Denise J, Panis Y, D. M, E. H, Z. L, L. M, J. P à la D, Y. P, Mege D, Hain E, Lakkis Z, Maggiori L, Prost à la Denise J, Panis Y (2018) Is trans-anal total mesorectal excision really safe and better than laparoscopic total mesorectal excision with a perineal approach first in patients with low rectal cancer? a learning curve with case-matched study in 68 patients. *Color Dis* 20:O143–O151. <https://doi.org/10.1111/codi.14238>
37. Rubinkiewicz M, Truszkiewicz K, Wysocki M, Witowski J, Torbic G, Nowakowski MM, Budzynski A, Pędziwiatr M (2020) Evaluation of the learning curve of transanal total mesorectal excision: single-centre experience. *Wideochirurgia I Inne Tech Maloinwazyjne* 15:36–42. <https://doi.org/10.5114/wiitm.2019.82733>
38. Persiani R, Agnes A, Belia F, D'Ugo D, Biondi A (2020) The learning curve of TaTME for mid-low rectal cancer: a comprehensive analysis from a five-year institutional experience. *Surg Endosc* 1:3. <https://doi.org/10.1007/s00464-020-08115-0>
39. Balik E, Asoglu O, Saglam S, Yamaner S, Akyuz A, Buyukuncu Y, Gulluoglu M, Bulut T, Bugra D (2010) Effects of surgical laparoscopic experience on the short-term postoperative outcome of rectal cancer: results of a high volume single center institution. *Surg Laparosc Endosc Percutan Tech* 20:93–99. <https://doi.org/10.1097/SLE.0b013e3181d83e20>
40. Tsai K-YY, Kiu K-TT, Te H-T, Wu C-HH, Chang T-CC (2015) The learning curve for laparoscopic colectomy in colorectal cancer at a new regional hospital. *Asian J Surg* 39:34–40. <https://doi.org/10.1016/j.asjsur.2015.03.008>
41. Lujan J, Gonzalez A, Abrisqueta JJ, Hernandez Q, Valero G, Abellan I, Frutos MDMD, Parrilla P, Luján J, Gonzalez A, Abrisqueta JJ, Hernandez Q, Valero G, Abellán I, Frutos MDMD, Parrilla P (2014) The Learning Curve of Laparoscopic Treatment of Rectal Cancer Does Not Increase Morbidity. *Cirugía Española (English Ed)* 92:485–490. <https://doi.org/10.1016/j.cireng.2013.03.008>
42. Agha A, Furst A, Iesalnieks I, Fichtner-Feigl S, Ghali N, Krenz D, Anthuber M, Jauch KW, Piso P, Schlitt HJ (2008) Conversion rate in 300 laparoscopic rectal resections and its influence on morbidity and oncological outcome. *Int J Colorectal Dis* 23:409–417
43. Kuo L-J, Hung C-S, Wang W, Tam K-W, Lee H-C, Liang H-H, Chang Y-J, Huang M-T, Wei P-L (2013) Intersphincteric resection for very low rectal cancer: clinical outcomes of open versus laparoscopic approach and multidimensional analysis of the learning curve for laparoscopic surgery. *J Surg Res* 183:524–530. <https://doi.org/10.1016/j.jss.2013.01.049>
44. Wu Y, Sun X, Qi J, Wei G, Cui F, Gao Q, Yu J, Wang K, Zheng J (2017) Comparative study of short- and long-term outcomes of laparoscopic-assisted versus open rectal cancer resection during and after the learning curve period. *Medicine (Baltimore)*. <https://doi.org/10.1097/MD.0000000000006909>

45. Melich G, Hong YK, Kim J, Hur H, Baik SH, Kim NK, Sender Liberman A, Min BS (2015) Simultaneous development of laparoscopy and robotics provides acceptable perioperative outcomes and shows robotics to have a faster learning curve and to be overall faster in rectal cancer surgery: analysis of novice MIS surgeon learning curves. *Surg Endosc* 29:558–568. <https://doi.org/10.1007/s00464-014-3698-0>
46. Morelli L, Di Franco G, Lorenzoni V, Guadagni S, Palmeri M, Furbetta N, Gianardi D, Bianchini M, Caprili G, Mosca F, Turchetti G, Cuschieri A (2018) Structured cost analysis of robotic TME resection for rectal cancer: a comparison between the da Vinci Si and Xi in a single surgeon's experience. *Surg Endosc Other Interv Tech*. <https://doi.org/10.1007/s00464-018-6465-9>
47. Park EJ, Kim CW, Cho MS, Kim DW, Min BS, Baik SH, Lee KY, Kim NK (2014) Is the learning curve of robotic low anterior resection shorter than laparoscopic low anterior resection for rectal cancer?: a comparative analysis of clinicopathologic outcomes between robotic and laparoscopic surgeries. *Med (United States)*. <https://doi.org/10.1097/MD.000000000000109>
48. Caycedo-Marulanda A, Verschoor CP (2020) Experience beyond the learning curve of transanal total mesorectal excision (taTME) and its effect on the incidence of anastomotic leak. *Tech Coloproctol* 24:309–316. <https://doi.org/10.1007/s10151-020-02160-6>
49. Van Oostendorp S, Belgers H, Hol J, Doornebosch P, Belt E, Oosterling S, Kusters M, Bonjer H, Sietses C, Tuynman J (2021) Learning curve of TaTME for rectal cancer is associated with local recurrence; results from a multicentre external audit. *Color Dis*. <https://doi.org/10.1111/codi.15722>
50. Zeng Z, Liu Z, Huang L, Liu H, Jie H, Luo S, Zhang X, Kang L (2021) Transanal total mesorectal excision in mid-low rectal cancer: evaluation of the learning curve and comparison of short-term results with standard laparoscopic total mesorectal excision. *Dis Colon Rectum* 64:380–388. <https://doi.org/10.1097/DCR.0000000000001816>
51. Wang Y, Wang G, Li Z, Ling H, Yi B, Zhu S (2021) Comparison of the operative outcomes and learning curves between laparoscopic and “Micro Hand S” robot-assisted total mesorectal excision for rectal cancer: a retrospective study. *BMC Gastroenterol*. <https://doi.org/10.1186/s12876-021-01834-1>
52. Sng KK, Hara M, Shin J-WW, Yoo B-EE, Yang K-SS, Kim S-HH (2013) The multiphasic learning curve for robot-assisted rectal surgery. *Surg Endosc* 27:3297–3307. <https://doi.org/10.1007/s00464-013-2909-4>
53. Yamaguchi T, Kinugasa Y, Shiomi A, Sato S, Yamakawa Y, Kagawa H, Tomioka H, Mori K (2015) Learning curve for robotic-assisted surgery for rectal cancer: use of the cumulative sum method. *Surg Endosc* 29:1679–1685. <https://doi.org/10.1007/s00464-014-3855-5>
54. Kim I, Kang J, Park YA, Kim NK, Sohn S-K, Lee KY (2014) Is prior laparoscopy experience required for adaptation to robotic rectal surgery?: feasibility of one-step transition from open to robotic surgery. *Int J Colorectal Dis* 29:693–699. <https://doi.org/10.1007/s00384-014-1858-2>
55. Odermatt M, Ahmed J, Panteleimonitis S, Khan J, Parvaiz A (2017) Prior experience in laparoscopic rectal surgery can minimise the learning curve for robotic rectal resections: a cumulative sum analysis. *Surg Endosc* 31:4067–4076. <https://doi.org/10.1007/s00464-017-5453-9>
56. Kawai K, Hata K, Tanaka T, Nishikawa T, Otani K, Murono K, Sasaki K, Kaneko M, Emoto S, Nozawa H (2018) Learning curve of robotic rectal surgery with lateral lymph node dissection: cumulative sum and multiple regression analyses. *J Surg Educ* 75:1598–1605. <https://doi.org/10.1016/j.jsurg.2018.04.018>
57. Gachabayov M, Kim SH, Jimenez-Rodriguez R, Kuo LJ, Cianchi F, Tulina I, Tsarkov P, Bergamaschi R (2020) Impact of robotic learning curve on histopathology in rectal cancer: a pooled analysis. *Surg Oncol* 34:121–125. <https://doi.org/10.1016/j.suronc.2020.04.011>
58. Kayano H, Okuda J, Tanaka K, Kondo K, Tanigawa N (2011) Evaluation of the learning curve in laparoscopic low anterior resection for rectal cancer. *Surg Endosc* 25:2972–2979
59. Ito M, Sugito M, Kobayashi A, Nishizawa Y, Tsunoda Y, Saito N (2009) Influence of learning curve on short-term results after laparoscopic resection for rectal cancer. *Coloproctology* 23:403–408
60. Gkionis IG, Flamourakis ME, Tsagkatakis ES, Kaloeidi EI, Spiridakis KG, Kostakis GE, Aleggkakis AK, Christodoulakis MS (2020) Multidimensional analysis of the learning curve for laparoscopic colorectal surgery in a regional hospital: the implementation of a standardized surgical procedure counterbalances the lack of experience. *BMC Surg*. <https://doi.org/10.1186/s12893-020-00975-6>
61. Jeong SY, Park JW, Nam BH, Kim S, Kang SB, Lim SB, Choi HS, Kim DW, Chang HJ, Kim DY, Jung KH, Kim TY, Kang GH, Chie EK, Kim SY, Sohn DK, Kim DH, Kim JS, Lee HS, Kim JH, Oh JH (2014) Open versus laparoscopic surgery for mid-rectal or low-rectal cancer after neoadjuvant chemoradiotherapy (COREAN trial): Survival outcomes of an open-label, non-inferiority, randomised controlled trial. *Lancet Oncol* 15:767–774. [https://doi.org/10.1016/S1470-2045\(14\)70205-0](https://doi.org/10.1016/S1470-2045(14)70205-0)
62. Biau DJ, Porcher R (2010) A method for monitoring a process from an out of control to an in control state: application to the learning curve. *Stat Med* 29:1900–1909. <https://doi.org/10.1002/sim.3947>
63. van Oostendorp SE, Belgers HJ, Bootsma BT, Hol JC, Belt EJTH, Bleeker W, Den Boer FC, Demirkiran A, Dunker MS, Fabry HFJ, Graaf EJR, Knol JJ, Oosterling SJ, Slooter GD, Sonneveld DJA, Talsma AK, Van Westreenen HL, Kusters M, Hompes R, Bonjer HJ, Sietses C, Tuynman JB (2020) Locoregional recurrences after transanal total mesorectal excision of rectal cancer during implementation. *Br J Surg*. <https://doi.org/10.1002/bjs.11525>
64. Wasmuth HH, Færden AE, Myklebust T, Pfeffer F, Norderval S, Riis R, Olsen OC, Lambrecht JR, Kørner H, Larsen SG, Forsmo HM, Bækkelund O, Lavik S, Knapp JC, Sjo O, Rashid G (2020) Transanal total mesorectal excision for rectal cancer has been suspended in Norway. *Br J Surg* 107:121–130. <https://doi.org/10.1002/bjs.11459>
65. Atallah S, Sylla P, Wexner SD (2019) Norway versus The Netherlands: will taTME stand the test of time? *Tech Coloproctol* 23:803–806
66. Guend H, Widmar M, Patel S, Nash GM, Paty PB, Guillem JGJG, Temple LK, Garcia-Aguilar J, Weiser MR (2017) Developing a robotic colorectal cancer surgery program: understanding institutional and individual learning curves. *Surg Endosc* 31:2820–2828. <https://doi.org/10.1007/s00464-016-5292-0>
67. Zhang X-M, Wang Z, Liang J-W, Zhou Z-X (2014) Seniors have a better learning curve for laparoscopic colorectal cancer resection. *Asian Pac J Cancer Prev* 15:5395–5399. <https://doi.org/10.7314/apjcp.2014.15.13.5395>
68. Soomro NA, Hashimoto DA, Porteous AJ, Ridley CJA, Marsh WJ, Ditto R, Roy S (2020) Systematic review of learning curves in robot-assisted surgery. *BJS open* 4:27–44
69. Dindo D, Demartines N, Clavien P-A (2004) Classification of surgical complications. *Ann Surg* 240:205–213. <https://doi.org/10.17116/hirurgia2018090162>
70. Couwenberg AM, de Beer FSA, Intven MPW, Burbach JPM, Smits AB, Consten ECJ, Schiphorst AHW, Wijffels NAT, de Roos MAJ, Hamaker ME, van Grevenstein WMU, Verkooijen HM (2018) The impact of postoperative complications on health-related quality of life in older patients with rectal cancer; a prospective cohort study. *J Geriatr Oncol* 9:102–109. <https://doi.org/10.1016/j.jgo.2017.09.005>

71. Kassite I, Bejan-Angoulvant T, Lardy H, Binet A (2019) A systematic review of the learning curve in robotic surgery: range and heterogeneity. *Surg Endosc* 33:353–365. <https://doi.org/10.1007/s00464-018-6473-9>
72. Kirchoff P, Clavien PA, Hahnloser D (2010) Complications in colorectal surgery: risk factors and preventive strategies. *Patient Saf Surg* 4:1–13
73. Novick RJ, Fox SA, Stitt LW, Forbes TL, Steiner S (2006) Direct comparison of risk-adjusted and non-risk-adjusted CUSUM analyses of coronary artery bypass surgery outcomes. *J Thorac Cardiovasc Surg* 132:386–391. <https://doi.org/10.1016/j.jtcvs.2006.02.053>

Publisher's Note Springer Nature remains neutral with regard to jurisdictional claims in published maps and institutional affiliations.