

CentraCare Health

DigitalCommons@CentraCare Health

Nursing Posters

Posters and Scholarly Works

2022

It's Time to Break Old Habits: Admitting STEMIs to the Telemetry Unit

Teresa Jahn

St. Cloud Hospital, CentraCare Health, teresa.jahn@centracare.com

Tanya Glenz

St. Cloud Hospital, CentraCare Health, glenzt@centracare.com

Follow this and additional works at: https://digitalcommons.centracare.com/nursing_posters



Part of the [Other Nursing Commons](#)

Recommended Citation

Jahn, Teresa and Glenz, Tanya, "It's Time to Break Old Habits: Admitting STEMIs to the Telemetry Unit" (2022). *Nursing Posters*. 125.

https://digitalcommons.centracare.com/nursing_posters/125

This Book is brought to you for free and open access by the Posters and Scholarly Works at DigitalCommons@CentraCare Health. It has been accepted for inclusion in Nursing Posters by an authorized administrator of DigitalCommons@CentraCare Health. For more information, please contact schlepers@centracare.com.



Goal

Beginning December 2020 uncomplicated ST-Elevated MI patients will be admitted directly to Telemetry following intervention instead of CICU.

Preparation

- June 2020:** Review and develop evidence-based exclusion criteria for admission to Telemetry
- June 2020:** Create a process for communication between the nursing supervisor, cath lab, Telemetry Unit and CICU for patient placement
- Fall 2020:** Meeting with Telemetry and CICU charge nurse, nursing supervisor and cath lab RN to discuss communication process
- Dec 2020:** Begin tracking STEMI patients
 - ❖ Unit admitted to (Telemetry or CICU/ICU)
 - ❖ Requiring transfer to CICU/ICU from Telemetry

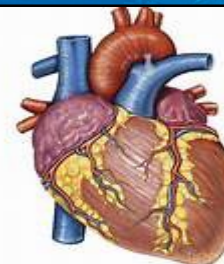
Team Members

- Wade Schmidt- Interventional Cardiology Physician
- Brian Stegman- Interventional Cardiology Physician
- David Miranda- Advanced Heart Failure Physician
- Scott Scepaniak- RN Cath Lab/CT Supervisor
- Tanya Glenz- CCRN CHIP/SHOCK Coordinator

Implementation Plan

Exclusion Criteria Developed by the Multidisciplinary Team

- ❖ Aldrete < 8
- ❖ <TMI III flow
- ❖ Respiratory Distress
- ❖ Anterior Infarct (Proximal LAD)
- ❖ HR > 100 mmHg or SBP < 110 mmHg
- ❖ High risk non-culprit lesion requiring staged intervention
- ❖ Ongoing moderate-severe chest pain
- ❖ High risk arrhythmias (heart block needing temp pacer or V-Tach)
- ❖ First medical contact to intervention > 120 min

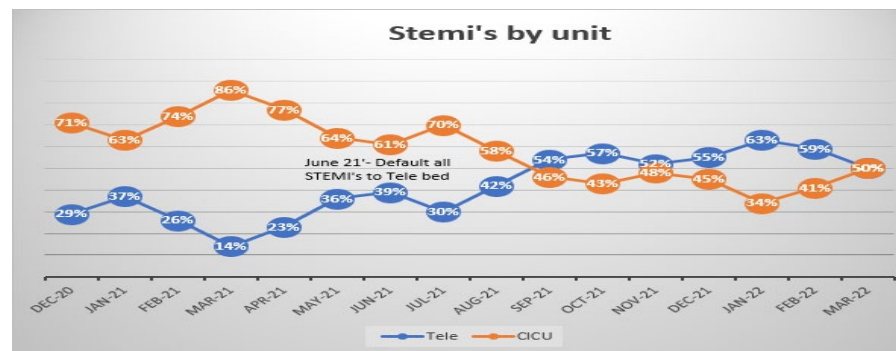


Communication Plan Between Cath Lab, CICU, and Telemetry December 2020

- ❖ STEMI line notifies Tele/CICU charge nurses of STEMI
- ❖ Nursing supervisor will notify both Tele and CICU of STEMI
- ❖ When final decision re: patient's admitting unit has been made, Cath Lab RN will call nursing supervisor for a bed
- ❖ Cath lab will then alert Tele or CICU of admission
- ❖ Tele and CICU will always keep one bed available for a STEMI admit

Re-evaluation After 6 Months: June 2021

- ❖ All STEMI patients default to a Tele admission (if criteria met)



Results

Between December 2020 and March 2022 474 patients were admitted to SCH with Dx of STEMI

- ❖ 286 (59%) admitted to CICU or ICU
- ❖ 188 (40%) admitted to Telemetry
- ❖ 4 (1%) of the 188 admitted to Telemetry required transfer later to CICU due to complications

Change takes time...

The first 6 months of implementation

- ❖ 72% of patients admitted to Telemetry
- ❖ 28% of patients admitted to CICU

The past 6 months...

- ❖ 56% of patients admitted to Telemetry
- ❖ 44% of patients admitted to CICU

References

Prueksaritanond, S. & Abdel-Latif, A. (2019). ST-Segment elevation myocardial infarction patients in the coronary care unit: Is it time to break old habits? *Journal of American College of Cardiology*, 12(8), 718-720. <http://doi.org/10.1016/j.jcin.2019.02.028>

Shavadia, J. S., Chen, A. Y., Fanaroff, A. C., De Lemos, J. A., Kontos, M. C., & Wang, T. Y. (2019). Intensive care utilization in stable patients with ST-Segment elevation myocardial infarction treated with rapid reperfusion. *Journal of American College of Cardiology*, 12(8), 709-717. <http://doi.org/10.1016/j.jcin.2019.02.028>