

DH2020: Lightning talk

Creating Structured and Reusable
Data for Tourism and Commerce
Images of Edo:
Using IIF Curation Platform to Extract
Information from Historical Materials

Chikahiko SUZUKI, Asanobu KITAMOTO

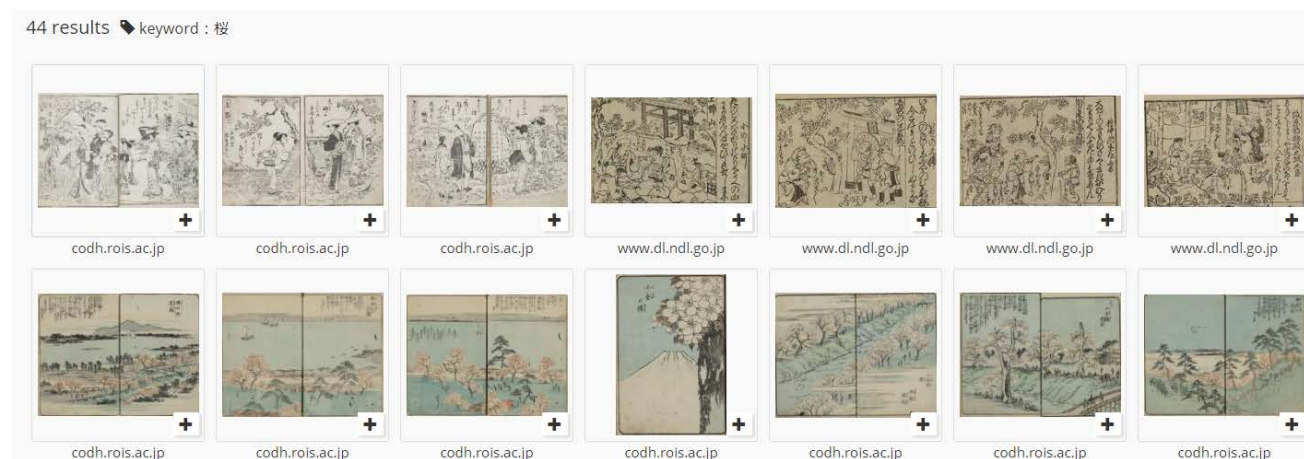
ROIS-DS Center for Open Data in the Humanities (CODH) / National Institute of
Informatics

Our Purpose

- Restore Edo's historical city conditions
 - Edo is Tokyo's former name before the late 19th century.
 - Edo is the Capital of the Tokugawa Shogunate.
- Using historical materials as Data
 - A large number of books published in the Edo period (17th - 19th) images are being released based on IIIF.
 - We focus on non-textual materials.
 - For textual materials, TEI is the de facto standard.
 - For non-textual materials, we need to find new ways.
- We used [IIIF Curation Platform](#) to gather Images, add metadata and organize reusable data.

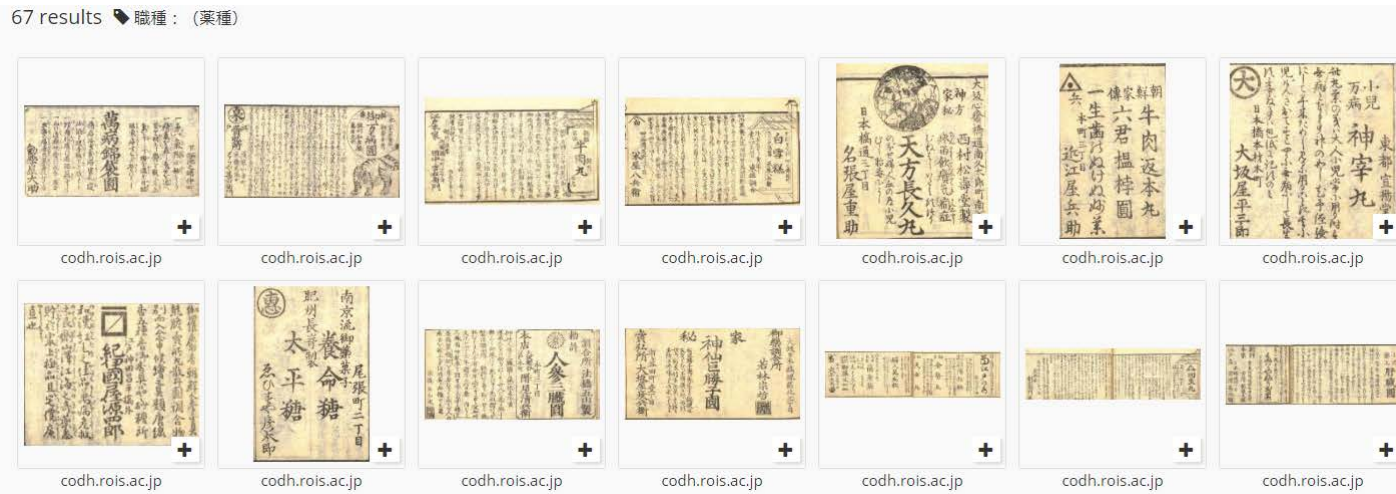
Material 1: Guidebooks of famous places

- *Meisho-Ki* 名所記 and *Meisho-Zue* 名所図会 are books which contain information about famous places like guidebooks today.
- We picked up illustrations contained in these guidebooks and added metadata.
- Provided as “[Illustration of Edo Famous Places](#)”
 - We can search famous places with guidebooks' titles, keywords, place names.
- Example: Famous places related to cherry blossoms 桜



Material 2: Shopping guidebook of Edo

- *Edo-Hitori-Kaimono-Annai* 江戸独買物案内 is a shopping guide of Edo. This book has names of merchants, address, occupations, trademarks (*Yagou-mon* 屋号紋) and advertising statements. The book design is focusing on images.
- We picked up all merchants' information from this book.
- Provided as "[Curation of Merchant in Edo](#)"
 - We can search merchants with names, address, occupations and guilds (*Nakama* 仲間).
- Example: Illustrated advertisement of medicine dealers



Next step of our project

- We can reproduce the situation of the city. The current data confirmed the relationship between tourist sites and commerce.
 - We found the frequency of famous places with plants.
 - [“Pre-modern Japanese Books as Data of Humanities: Finding Image of Edo Famous Place from Meisho-Ki 名所記 and Meisho-Zue 名所図会 using IIF”](#), JADH2019
 - Also we found relations between famous places and merchants.
 - [“Using Pre Modern Japanese Book“江戸買物独案内” as Microcontents for Reconstruction the City of Edo”](#), Jinmonkon2019
- Our next step is connecting non-textual information with geographical information.
 - We need to select place name dictionaries that matches the material.
 - Guidebooks of Famous places have only place name.
 - On the other hand, shopping guide has town and area name in the Edo period.
 - CODH provides [“Edo Map β version”](#) covers place names extracted from *Edo Kiriezu* 江戸切絵図.
 - We can visualize them on the map of the Edo period.