

Wofford College

## Digital Commons @ Wofford

---

Broadus R. Littlejohn, Jr. Manuscript and  
Ephemera Collection

Sandor Teszler Library Archives and Special  
Collections

---

11-21-1924

### Map of Carver Heights, Spartanburg, S.C.

Newbury Realty & Auction, Co.

W. H. Stiff C.E.

Follow this and additional works at: <https://digitalcommons.wofford.edu/littlejohnmss>



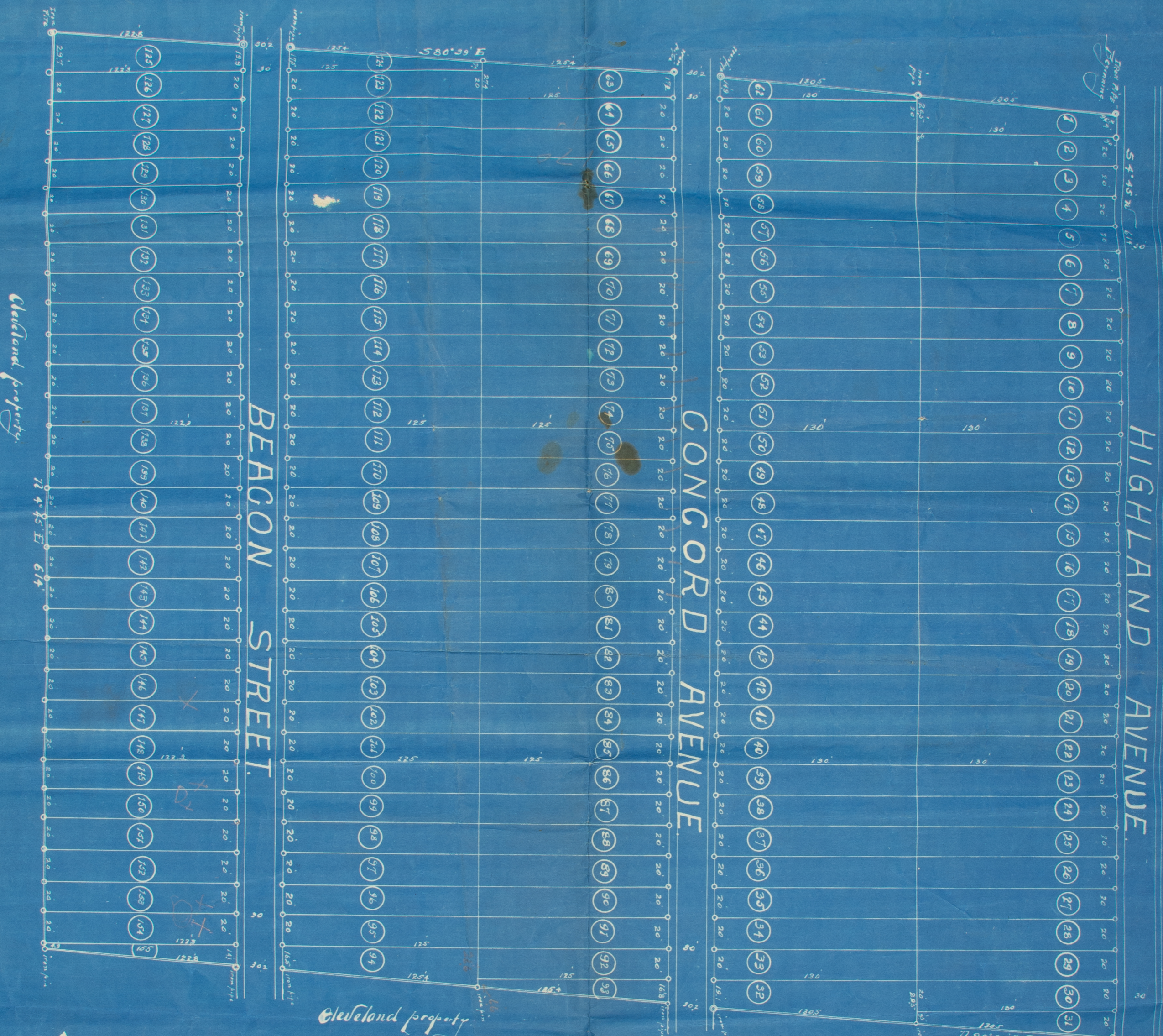
Part of the [Business Administration, Management, and Operations Commons](#), [History Commons](#), [Real Estate Commons](#), and the [Urban, Community and Regional Planning Commons](#)

---

#### Recommended Citation

Newbury Realty & Auction, Co. and Stiff, W. H. C.E., "Map of Carver Heights, Spartanburg, S.C." (1924). *Broadus R. Littlejohn, Jr. Manuscript and Ephemera Collection*. 339. <https://digitalcommons.wofford.edu/littlejohnmss/339>

This Manuscript is brought to you for free and open access by the Sandor Teszler Library Archives and Special Collections at Digital Commons @ Wofford. It has been accepted for inclusion in Broadus R. Littlejohn, Jr. Manuscript and Ephemera Collection by an authorized administrator of Digital Commons @ Wofford. For more information, please contact [stonerp@wofford.edu](mailto:stonerp@wofford.edu).



MAP  
OF  
**CARVER HEIGHTS**  
SPARTANBURG, S.C.  
OWNED BY  
W.W. LANCASTER, W.B. HARRISON,  
AND DR. J.T. MONTGOMERY,  
SUBDIVIDED BY

**NEWBURY REALTY & AUCTION Co.,**  
SPARTANBURG, S.C.

NOVEMBER 21 1924

W.H. Stiff, C.E.  
Scale 50'-1 inch

Magnetic Meridian, Talcott's 2<sup>d</sup>, 1934  
Scale 50'-1 inch

Cleveland Property

Cleveland Property

