

University of Groningen

Cardiac remodelling - Part 2

Aimo, Alberto; Vergaro, Giuseppe; Gonzalez, Arantxa; Barison, Andrea; Lupon, Josep; Delgado, Victoria; Richards, A. Mark; de Boer, Rudolf A.; Thum, Thomas; Arfsten, Henrike

Published in:
European Journal of Heart Failure

DOI:
[10.1002/ejhf.2522](https://doi.org/10.1002/ejhf.2522)

IMPORTANT NOTE: You are advised to consult the publisher's version (publisher's PDF) if you wish to cite from it. Please check the document version below.

Document Version
Publisher's PDF, also known as Version of record

Publication date:
2022

[Link to publication in University of Groningen/UMCG research database](#)

Citation for published version (APA):

Aimo, A., Vergaro, G., Gonzalez, A., Barison, A., Lupon, J., Delgado, V., Richards, A. M., de Boer, R. A., Thum, T., Arfsten, H., Hulsmann, M., Falcao-Pires, I., Diez, J., Foo, R. S. Y., Chan, M. Y. Y., Anene-Nzelu, C. G., Abdelhamid, M., Adamopoulos, S., Anker, S. D., ... Emdin, M. (2022). Cardiac remodelling - Part 2: Clinical, imaging and laboratory findings. A review from the Study Group on Biomarkers of the Heart Failure Association of the European Society of Cardiology. *European Journal of Heart Failure*, 24(6), 944-958. <https://doi.org/10.1002/ejhf.2522>

Copyright

Other than for strictly personal use, it is not permitted to download or to forward/distribute the text or part of it without the consent of the author(s) and/or copyright holder(s), unless the work is under an open content license (like Creative Commons).

The publication may also be distributed here under the terms of Article 25fa of the Dutch Copyright Act, indicated by the "Taverne" license. More information can be found on the University of Groningen website: <https://www.rug.nl/library/open-access/self-archiving-pure/taverne-amendment>.

Take-down policy

If you believe that this document breaches copyright please contact us providing details, and we will remove access to the work immediately and investigate your claim.

Downloaded from the University of Groningen/UMCG research database (Pure): <http://www.rug.nl/research/portal>. For technical reasons the number of authors shown on this cover page is limited to 10 maximum.

Cardiac remodelling – Part 2: Clinical, imaging and laboratory findings. A review from the Study Group on Biomarkers of the Heart Failure Association of the European Society of Cardiology

Alberto Aimo^{1,2}, Giuseppe Vergaro^{1,2}, Arantxa González^{3,4}, Andrea Barison^{1,2}, Josep Lupón⁵, Victoria Delgado⁵, A Mark Richards⁶, Rudolf A. de Boer⁷, Thomas Thum^{8,9}, Henrike Arfsten^{8,9}, Martin Hülsmann⁸, Inês Falcao-Pires¹⁰, Javier Díez¹¹, Roger S.Y. Foo¹², Mark Yan Yee Chan¹², Chukwuemeka G. Anene-Nzeli¹², Magdy Abdelhamid¹³, Stamatis Adamopoulos¹⁴, Stefan D. Anker¹⁵, Yuri Belenkov¹⁶, Tuvia B. Gal¹⁷, Alain Cohen-Solal¹⁸, Michael Böhm¹⁹, Ovidiu Chioncel²⁰, Ewa A. Jankowska²¹, Finn Gustafsson²², Loreena Hill²³, Tiny Jaarsma²⁴, James L. Januzzi²⁵, Pardeep Jhund²⁶, Yuri Lopatin²⁷, Lars H. Lund²⁸, Marco Metra²⁹, Davor Milicic³⁰, Brenda Moura^{10,31}, Christian Mueller³², Wilfried Mullens³³, Julio Núñez³⁴, Massimo F. Piepoli³⁵, Amina Rakisheva³⁶, Arsen D. Ristic^{37,38}, Patrick Rossignol³⁹, Gianluigi Savarese²⁸, Carlo G. Tocchetti⁴⁰, Sophie van Linthout⁴¹, Maurizio Volterrani⁴², Petar Seferovic^{38,43}, Giuseppe Rosano⁴⁴, Andrew J.S. Coats⁴⁵, Michele Emdin^{1,2}, and Antoni Bayes-Genis^{4,5,46*}

¹Scuola Superiore Sant'Anna, Pisa, Italy; ²Cardiology Division, Fondazione Toscana Gabriele Monasterio, Pisa, Italy; ³CIMA Universidad de Navarra, and IdiSNA, Navarra Institute for Health Research, Pamplona, Spain; ⁴CIBERCV, Carlos III Institute of Health, Madrid, Spain; ⁵Institut del Cor, Hospital Universitari Germans Trias i Pujol Badalona, Barcelona, Spain; ⁶University of Otago, Dunedin, New Zealand; ⁷Department of Cardiology, University Medical Centre Groningen, Groningen, The Netherlands; ⁸Clinical Division of Cardiology, Department of Internal Medicine II, Medical University of Vienna, Vienna, Austria; ⁹German Centre for Cardiovascular Research (DZHK), Partner Site Berlin, Berlin, Germany; ¹⁰Faculty of Medicine, University of Porto, Porto, Portugal; ¹¹Center for Applied Medical Research, Pamplona, Spain; ¹²Department of Medicine, Yong Loo-Lin School of Medicine, National University Hospital, Singapore; ¹³Faculty of Medicine, Cairo University, Cairo, Egypt; ¹⁴2nd Department of Cardiovascular Medicine, Onassis Cardiac Surgery Center, Athens, Greece; ¹⁵Department of Cardiology (CVK), and Berlin Institute of Health Center for Regenerative Therapy (BCRT), German Center for Cardiovascular Research (DZHK) partner site Berlin, Charité Universitätsmedizin, Berlin, Germany; ¹⁶Lomonosov Moscow State University, Moscow, Russia; ¹⁷Cardiology Department, Rabin Medical Center, Beilinson, Israel; ¹⁸Hospital Lariboisière, Paris, France; ¹⁹University of the Saarland, Homburg/Saar, Germany; ²⁰Emergency Institute for Cardiovascular Diseases 'Prof. C.C. Iliescu' Bucharest, University of Medicine Carol Davila, Bucharest, Romania; ²¹Institute of Heart Disases, Wroclaw Medical University, Wroclaw, Poland; ²²Heart Centre, Department of Cardiology, Rigshospitalet - Copenhagen University Hospital, Copenhagen, Denmark; ²³Queen's University Belfast, Belfast, UK; ²⁴Linköping University, Linköping, Sweden; ²⁵Massachusetts General Hospital and Bain Institute for Clinical Research, Boston, MA, USA; ²⁶University of Glasgow, Glasgow, UK; ²⁷Volgograd State Medical University, Volgograd, Russia; ²⁸Department of Medicine, Karolinska Institutet, and Department of Cardiology, Karolinska University Hospital, Stockholm, Sweden; ²⁹Cardiology, ASST Spedali Civili; Department of Medical and Surgical Specialties, Radiological Sciences and Public Health, University of Brescia, Brescia, Italy; ³⁰University of Zagreb School of Medicine, Zagreb, Croatia; ³¹Cardiology Department, Porto Armed Forces Hospital, Porto, Portugal; ³²Department of Cardiology, University Hospital, Basel, Switzerland; ³³Hospital Oost-Limburg, Genk, Belgium; ³⁴Hospital Clínico Universitario de Valencia, INCLIVA, Universidad de Valencia, Valencia, Spain; ³⁵Cardiology Division, Castelsangiovanni Hospital, Castelsangiovanni, Italy; ³⁶Scientific Research Institute of Cardiology and Internal Medicine, Almaty, Kazakhstan; ³⁷Department of Cardiology, University Clinical Center of Serbia, Belgrade, Serbia; ³⁸Faculty of Medicine, University of Belgrade, Belgrade, Serbia; ³⁹Université de Lorraine, Centre d'Investigations Cliniques-Plurithématique 1433 and Inserm U1116, CHRU Nancy, F-CRIN INI-CRCT, Nancy, France; ⁴⁰Cardio-Oncology Unit, Department of Translational Medical Sciences, Center for Basic and Clinical Immunology Research (CISI), Interdepartmental Center of Clinical and Translational Sciences (CIRCET), Interdepartmental Hypertension Research Center (CIRIAPA), Federico II University, Naples, Italy;

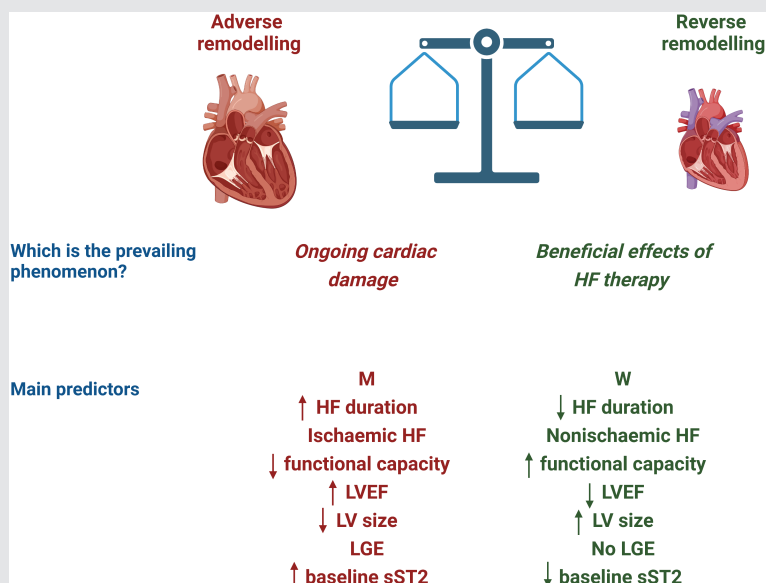
*Corresponding author. Hospital Universitari Germans Trias i Pujol, 08916 Badalona, Spain. Email: abayesgenis@gmail.com

⁴¹Berlin Institute of Health (BIH) at Charité - Universitätsmedizin Berlin, BIH Center for Regenerative Therapies (BCRT), Berlin, Germany; German Center for Cardiovascular Research (DZHK), Partner Site Berlin, Berlin, Germany; ⁴²IRCCS San Raffaele, Rome, Italy; ⁴³Serbian Academy of Sciences and Arts, Belgrade, Serbia; ⁴⁴St. George's Hospitals, NHS Trust, University of London, London, UK; ⁴⁵University of Warwick, Coventry, UK; and ⁴⁶Department of Medicine, Universitat Autònoma de Barcelona, Barcelona, Spain

Received 6 January 2022; revised 14 April 2022; accepted 15 April 2022

In patients with heart failure, the beneficial effects of drug and device therapies counteract to some extent ongoing cardiac damage. According to the net balance between these two factors, cardiac geometry and function may improve (reverse remodelling, RR) and even completely normalize (remission), or *vice versa* progressively deteriorate (adverse remodelling, AR). RR or remission predict a better prognosis, while AR has been associated with worsening clinical status and outcomes. The remodelling process ultimately involves all cardiac chambers, but has been traditionally evaluated in terms of left ventricular volumes and ejection fraction. This is the second part of a review paper by the Study Group on Biomarkers of the Heart Failure Association of the European Society of Cardiology dedicated to ventricular remodelling. This document examines the proposed criteria to diagnose RR and AR, their prevalence and prognostic value, and the variables predicting remodelling in patients managed according to current guidelines. Much attention will be devoted to RR in patients with heart failure with reduced ejection fraction because most studies on cardiac remodelling focused on this setting.

Graphical Abstract



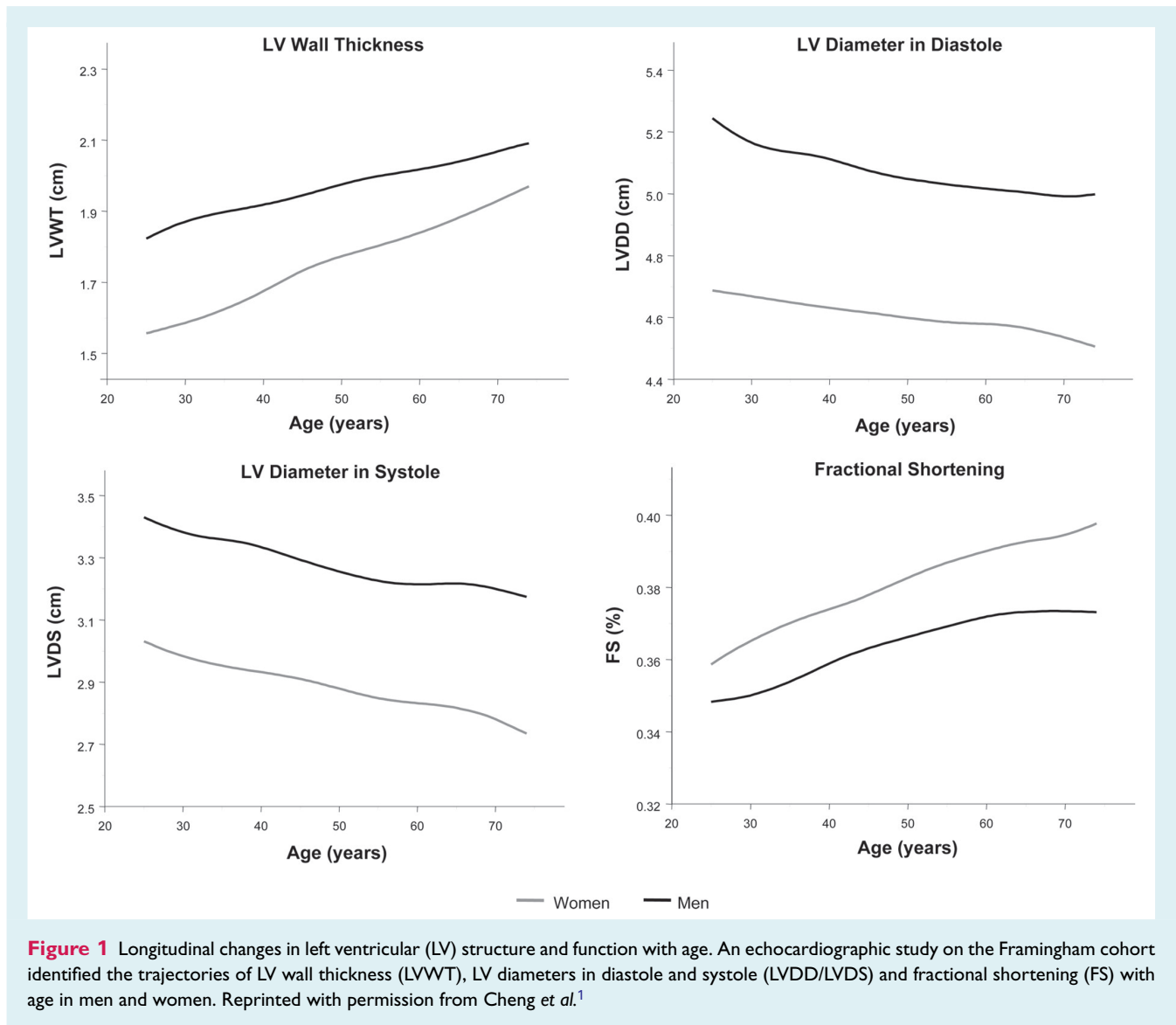
Basic mechanism and main predictors of cardiac remodelling. The net balance between the effects of ongoing cardiac damage and heart failure (HF) therapies will drive cardiac geometry and function towards a further worsening (adverse remodelling) or an improvement (reverse remodelling). The main predictors of adverse versus reverse remodelling are listed; see text for further details. Increased left ventricular (LV) size has been associated with a greater likelihood of reverse remodelling, although very dilated left ventricles are unlikely to undergo reverse remodelling. Lower baseline values of soluble suppression of tumorigenesis-2 (sST2) correspond to <48 ng/ml, which was reported to independently predict reverse remodelling. LGE, late gadolinium enhancement; LVEF, left ventricular ejection fraction; M, men; W, women.

Keywords

Heart failure • Ejection fraction • Remodelling • Predictors • Imaging • Biomarkers • Therapies

The shape, size and wall thickness of cardiac chambers change physiologically during the adult life. This evolution is characterized by a progressive increase in left ventricular (LV) wall thickness, decreasing LV dimensions, and increasing fractional shortening

with advancing age, and is more prominent in women than men.¹ The notion that LV size and function change over time even in healthy individuals is reflected by the identification of age-specific normal values for echocardiographic (Figure 1)¹ and



cardiac magnetic resonance (CMR) measures.^{2–4} Furthermore, a physiological cardiac remodelling may occur to meet the increasing metabolic demands related to pregnancy or exercise training. Pregnant women experience significant changes in the cardiovascular system that include increased blood volume and cardiac output, decreased systemic vascular resistance, and physiological cardiac hypertrophy.⁵ Endurance athletes tend to have large eccentrically remodelled hearts, with large ventricular volumes, modest wall thickening, and a low relative wall thickness, while power athletes present with concentric remodelling, with thick ventricular walls, relatively small ventricular volumes, and a high relative wall thickness.^{6,7} Physiological remodelling is reversed when the cause of increasing cardiovascular demands is no longer present.^{5,7} Pathological cardiac remodelling occurs in response to stressors such as myocardial infarction (MI), various causes of cardiomyopathy, or a chronically increased afterload.⁸ These stressors have direct and indirect (i.e. mediated by the activation of compensatory

mechanisms such as neurohormonal systems) effects on the heart. These effects persist over time and elicit changes that are initially compensatory, but on the long term may become maladaptive. For example, cardiomyocyte hypertrophy help maintain cardiac output following an MI at the expense of a worsening balance between oxygen supply and demand, which ultimately leads to further disease progression.

Although all chambers undergo dynamic changes over time, the process of cardiac remodelling is usually evaluated in terms of changes in LV volumes and/or ejection fraction, considering just sporadically the contextual changes in LV mass, diastolic function, or left atrial (LA) size. In community-based studies, cardiac remodelling has been associated with worse outcome. For example, in the Cardiovascular Health Study, increased LV mass, assessed at echocardiography, was associated with the development of LV systolic dysfunction (LV ejection fraction [LVEF] <55%).⁹ Among Framingham study participants, heart failure (HF)

risk was influenced by LV hypertrophy pattern, since eccentric and concentric hypertrophy predisposed to HF with reduced (HFrEF) or preserved ejection fraction (HFpEF), respectively.¹⁰ Moreover, LA volumes and function were the best echocardiographic predictors of a composite of atrial fibrillation and congestive HF.¹¹ The Multi-Ethnic Study of Atherosclerosis (MESA) has pointed out the association between LV dilatation (LV end-diastolic diameter [LVEDD] >52 mm or >95th percentile) and incident HF,¹² and between asymptomatic LV systolic dysfunction and increased all-cause mortality.¹³

In the setting of HF, the process of remodelling has been investigated most extensively in patients with HFrEF, who can follow four trajectories: (i) a progressive worsening in LV volumes and function (adverse remodelling [AR]), when cardiac damage progresses unopposed; (ii) a substantial stability over time, when cardiac protective therapies balance the detrimental effects of ongoing cardiac insults; (iii) a recovery (reverse remodelling [RR]), (iv) or even a normalization (remission).¹⁴ RR or remission usually require a drug or device therapy or correction of mitral regurgitation, although the removal of the underlying cause may even be sufficient (as in some cases of tachycardia-induced cardiomyopathy, alcohol abuse, cardiotoxic drugs, or peripartum cardiomyopathy).¹⁵ AR has been associated with worsening clinical status and outcome, while RR or remission predict a better prognosis, unless HF medications are withdrawn.¹⁶

This is the second part of a review paper by the Study Group on Biomarkers of the Heart Failure Association of the European Society of Cardiology dedicated to ventricular remodelling. Following the characterization of remodelling at the cellular and subcellular levels in Part 1, this Part 2 examines the proposed criteria to diagnose RR and AR, their prevalence and prognostic value, and the variables predicting remodelling in patients managed according to current guidelines (*Graphical Abstract*). Much attention will be devoted to RR in patients with HFrEF because most studies on cardiac remodelling focused on this setting.

Diagnostic criteria of reverse and adverse remodelling

The definition of RR has not been standardized.¹⁷ A dedicated search for diagnostic criteria of RR identified as many as 25 criteria from 42 studies (online supplementary *Table 1*),¹⁸ some of them quite elaborate and difficultly applicable in everyday clinical practice. All these criteria considered changes in LV diameters or volumes, LVEF or fractional shortening (FS), either alone or in combination, and with the use of arbitrarily defined cut-offs, and just one criterion considered changes in LV mass over time. The most frequently used criterion was LV end-systolic volume (LVESV) reduction $\geq 15\%$ (12 studies out of 42).¹⁸

Adverse remodelling was first described as the progression of the left ventricle with large transmural infarctions towards HF.¹⁶ A more progressive deterioration of LV geometry and function can be encountered in patients with HF, although progresses in drug and device therapy are making such deterioration increasingly

rare. Contrary to RR, most studies on AR considered absolute or percent changes in LV volumes or function over time.¹⁹ MI studies proposed heterogeneous criteria such as 5% decrease in LVEF, or 10 ml increase in LV end-diastolic volume (LVEDV) or LVESV over 20 months,²⁰ and LVEDV increase $>20\%$ ²¹ or $\geq 15\%$,²² LVEF reduction $>10\%$ and $<50\%$ or a $>10\%$ increase in LVEDV to above the normal range.²³ The transition from HFpEF to HF with mildly reduced ejection fraction (HFmrEF) or HFrEF has been evaluated.²⁴ With this possible exception, we are not aware of HF studies proposing diagnostic criteria for AR (*Table 1*).^{19,24–67}

In summary, no standardized definition of RR exists, and definitions of AR in HF have not been proposed so far.

Prevalence and prognostic value of reverse and adverse remodelling

The frequency of RR has been variably estimated from 29% to 60% in cohorts with different characteristics and using heterogeneous criteria for RR.⁶⁷ When applying all the RR criteria on a same cohort of HF outpatients with baseline LVEF $<50\%$, as many as 52% of patients had RR when using the criterion 'final LVEF $>35\%$ ' (although 43% of patients had a baseline LVEF $>35\%$), and just 2% with an elaborate criterion (LVEDD decrease >5 mm to a final LVEDD <55 mm AND FS increase $>5\%$ to a final FS $>25\%$ AND LV mass decrease $>10\%$). Thirty-one percent of patients were categorized as having RR when using the most common criterion for RR (LVESV reduction $\geq 15\%$).¹⁸

Broadly speaking, RR predicts a better long-term outcome, as indirectly confirmed by a meta-analytic assessment of drug and device trials reporting a proportional relationship between short-term changes in LV parameters and longer-term effects on survival.⁶⁸ The strength of the relationship between RR and outcome is also influenced by the definition of RR. In a cohort of 927 outpatients with baseline LVEF $<50\%$ undergoing two echocardiograms over 1 year and followed up thereafter, LVESV reduction $\geq 15\%$ proved less effective in risk reclassification than two LVEF-based criteria: LVEF increase >10 U, and LVEF increase ≥ 1 category (severe [LVEF $\leq 30\%$], moderate [LVEF 31%–40%], mild LV dysfunction [LVEF 41%–55%] and normal LV function [LVEF $\geq 56\%$]). Similar results were found in subgroups with more severe systolic dysfunction (LVEF $<40\%$ and $\leq 35\%$).¹⁸

The prevalence of AR in HF is surprisingly difficult to estimate from serial imaging studies because of biased indications for repeat imaging tests (e.g. clinical suspicion of worsening or improvement)⁶⁷ and because of the lack of diagnostic criteria in HF studies. It is intuitive that a deterioration in LV volumes and function portends a worse outcome, as confirmed by the consistent decline of LVEF shortly before patient death (*Figure 2*).²⁶

To summarize, the prevalence of RR has been variably estimated also because of the multitude of diagnostic criteria. The prevalence of AR in HF has not been defined; for this reason, the following sections will consider only RR.

Predictors of reverse remodelling

Clinical findings

Many factors affect the likelihood of RR in patients on guideline-recommended HF therapy. These include patient demographics, HF duration and aetiology, electrocardiographic (ECG) findings, blood pressure values, comorbidities, and exercise capacity (Table 1).⁶⁷

Women have often been reported to have a greater propensity to RR. For example, female sex was an independent predictor of RR in a large nationwide registry.²⁴ Furthermore, female sex independently predicted RR over 1 year in patients with baseline LVEF <50%, which was confirmed in different LVEF ranges, and in patients with either ischaemic or non-ischaemic HF.²⁵ Sex-related differences in the response to cardiac injury and HF therapies might contribute to these differences.⁶⁹ Conversely, patient age did not emerge as a predictor of RR.²⁷

In a retrospective study on 304 patients with HF_{rEF}, lower HF duration and non-ischaemic aetiology emerged as independent predictors of recovery.²⁷ Other studies confirmed that patients with recent-onset HF^{24,26} and those with non-ischaemic HF are more prone to RR.^{25,26,28,42} RR is also more common in patients with non-genetic or non-familial dilated cardiomyopathy (DCM) than those with genetic or familial DCM (40% vs. 25%; $p = 0.04$).⁷⁰ Furthermore, among patients with genetic DCM, those with truncating mutations in the titin gene have a lower likelihood of RR than those with mutations in lamin A/C, sarcomere, or cytoskeleton genes.⁷¹

The main ECG finding associated with the likelihood of RR outside of cardiac resynchronization therapy (CRT) studies is the absence of left bundle branch block (LBBB).^{27,29} Baseline heart rate did not emerge as a predictor even in patients starting beta-blockers.³⁰ A single study found a higher propensity of RR in patients with atrial fibrillation or flutter.²⁴ Higher systolic blood pressure at baseline was reported to predict RR in response

Table 1 Main predictors of reverse remodelling in patients with heart failure with reduced ejection fraction

Predictor category	Predictor	Ref.	
Clinical variables	Female sex	24,25	
	Lower HF duration	24,26,27	
	Non-ischaemic aetiology	25,27,28	
	Higher systolic BP	29–32	
	Hypertension	24,32	
	Anaemia	24	
	COPD	24	
	No diabetes	24,32	
	Atrial fibrillation/flutter	24	
	NYHA class I–II	24	
	Higher peak oxygen consumption, better exercise performance	24,33	
	Echo/CMR findings	Lower LVEF, greater LV diameters	19,27,28
		Greater contractility on strain imaging	34
LV dyssynchrony, lower LV volumes, preserved LV contractile reserve, lower degree of MR, lower LA dimensions, preserved right heart geometry and function		35–41	
LGE absence		42–44	
Lower ECV		45,46	
Higher dobutamine LV contractile reserve		47	
Biomarkers	Lower sST2	27,48	
	Lower Gal-3, emerging biomarkers (miRNAs, mimecan, etc.)	49–52	
Therapies	Start of HF therapy	26	
	Beta-blocker therapy	27,53–55	
	Ivabradine	56	
	Omecantiv mecarbil	57	
	SGLT2i (++)empagliflozin	58	
	CRT	59	
	MR correction	60–62	
	TAVR	63	
Myocardial revascularization	64–66		

See text for details. ACEi, angiotensin-converting enzyme inhibitor; ARB, angiotensin receptor blocker; BNP, B-type natriuretic peptide; BP, blood pressure; CMR, cardiac magnetic resonance; COPD, chronic obstructive pulmonary disease; CRT, cardiac resynchronization therapy; ECV, extracellular volume; Gal-3, galectin-3; HF, heart failure; LA, left atrial; LBBB, left bundle branch block; LGE, late gadolinium enhancement; LV, left ventricular; LVEF, left ventricular ejection fraction; miRNA, micro-RNA; MR, mitral regurgitation; MRA, mineralocorticoid receptor antagonist; NT-proBNP, N-terminal pro-B-type natriuretic peptide; NYHA, New York Heart Association; SGLT2i, sodium–glucose cotransporter 2 inhibitor; sST2, soluble suppression of tumorigenesis-2; TAVR, transcatheter aortic valve replacement. Modified with permission from Aimò *et al.*⁶⁷

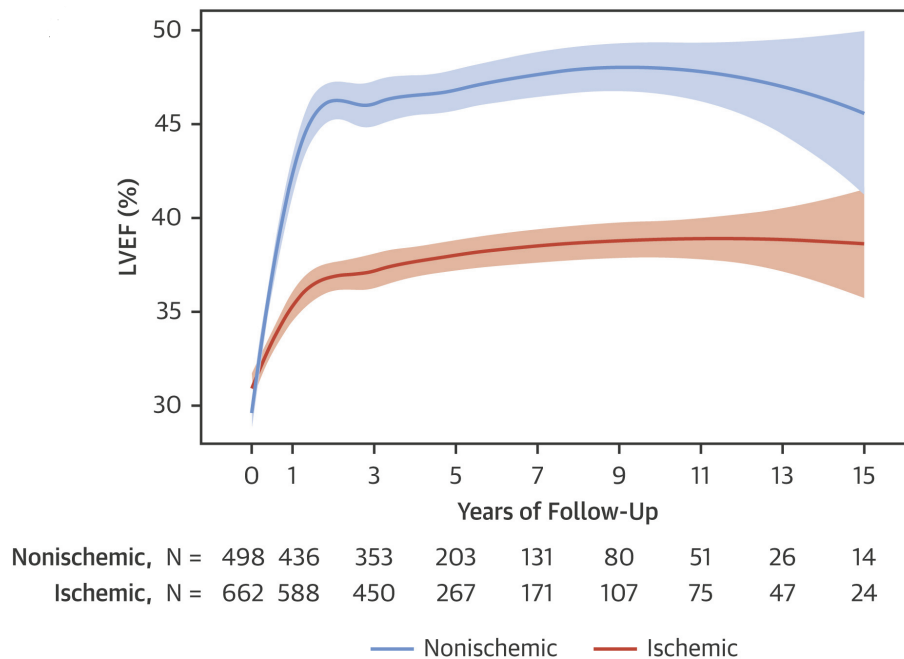


Figure 2 Dynamic trajectories of left ventricular ejection fraction (LVEF) after the start of guideline-directed medical therapy, according to heart failure aetiology. Loess spline curves are reported. Ischaemic versus non-ischaemic aetiology. $p < 0.001$ for LVEF trajectory changes for both groups; $p < 0.001$ for comparison between groups. Shaded regions represent 95% confidence interval. Reprinted with permission from Lupón et al.²⁶

to HF therapy.^{29–32} Furthermore, hypertension, anaemia, chronic obstructive pulmonary disease, but also absence of diabetes, were associated with a higher likelihood of RR.^{24,32}

Functional status at baseline could hypothetically display some relationship with the response to HF therapy and the occurrence of RR. New York Heart Association (NYHA) functional class I–II predicted RR in a nationwide study,²⁴ but NYHA class did not independently predict RR in a model including HF aetiology and duration and LVEF, among others.²⁷ Among patients undergoing CRT implantation, those showing an echocardiographic response over 6 months had higher peak oxygen consumption and an overall better exercise performance at baseline than non-responders. CRT responders also showed a significant improvement over time in metrics of exercise capacity, while non-responders had relatively stable results.³³

In conclusion, the likelihood of RR is higher in women, in patients with a short history of HF, those with non-ischaemic HF, no LBBB (if we do not consider cohorts of patients referred to CRT), hypertension, and better functional capacity.

Imaging

Patients with a larger and more dysfunctional left ventricle at baseline seem to have a greater propensity to RR.^{19,27,28} This may simply reflect that RR is usually defined based on relative proportional changes in LV volumes and/or LVEF, and that any change can be achieved more easily when starting from larger LV

volumes and a worse systolic function. This relationship between HF severity and frequency of RR is likely retained until LV function is so severely depressed that cannot recover following the start of therapy.⁶⁷

Transthoracic echocardiography represents the first-line imaging tool for assessment of cardiac chamber size, wall thickness, systolic and diastolic function. It includes two/three-dimensional echocardiography, pulsed and continuous wave Doppler, colour flow Doppler, tissue Doppler imaging, contrast echocardiography and deformation imaging (strain and strain rate); despite its wide availability, its reproducibility is operator-dependent, particularly for volumetric measurements and in patients with a poor acoustic window. Speckle-tracking analysis provide an assessment of LV contractility that is relatively independent of LV volumes and shape. A better preserved LV deformation has been associated with greater propensity to RR,^{34,72,73} which supports the notion that a functional reserve of the left ventricle is needed to respond favourably to HF therapies. Patients with greater degrees of LV dyssynchrony are more likely to develop RR following CRT.^{35,36} For example, the strain delay index across LV segments correlated with LVESV reduction 6 months after CRT ($r = 0.61$, $p < 0.001$), as confirmed in patients with either ischaemic or non-ischaemic HF.³⁷ Even radial dyssynchrony was associated with LVESV reduction after CRT regardless of QRS duration or morphology.³⁸ Three-dimensional echocardiography and speckle-tracking analysis allow rapid quantification of LV dyssynchrony and may predict RR after CRT.⁷⁴ Even in patients who already experienced RR (i.e.

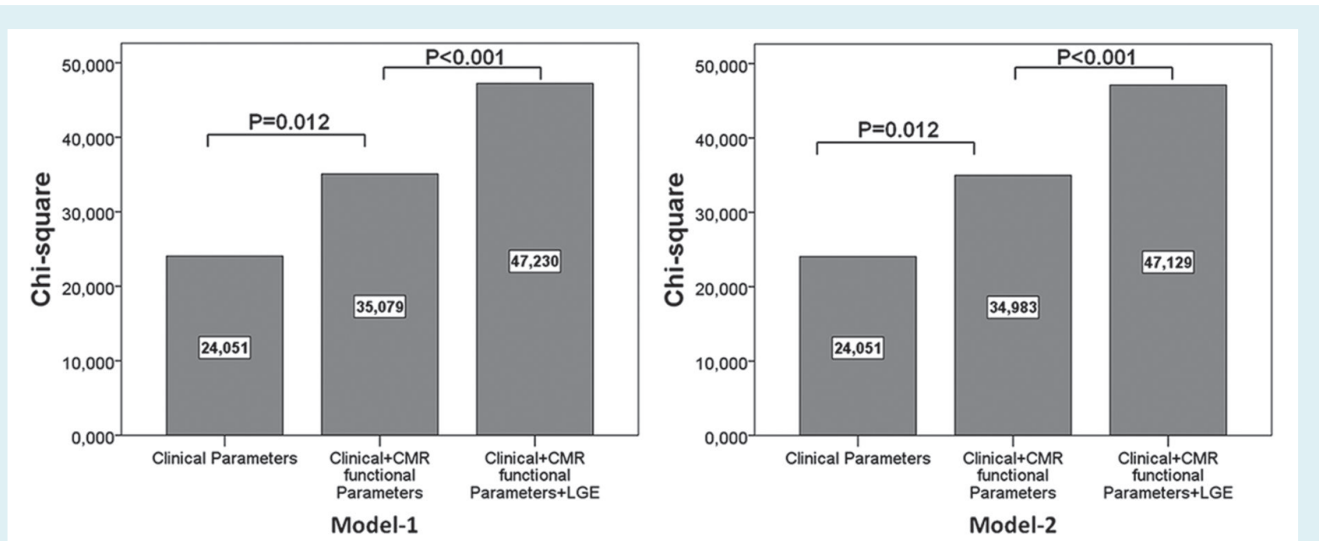


Figure 3 Prognostic value of late gadolinium enhancement (LGE) in non-ischæmic dilated cardiomyopathy. Incremental value of LGE in predicting left ventricular reverse remodelling compared with models including only clinical parameters or clinical plus cardiac magnetic resonance (CMR) functional parameters. Model 1 includes age, heart rate, and New York Heart Association class >I (clinical variables), left ventricular end-diastolic and end-systolic volume index, and right ventricular ejection fraction (CMR functional parameters), and LGE absence. Compared with Model 1, Model 2 includes left ventricular ejection fraction and not left ventricular end-systolic volume index. Reprinted with permission from Masci *et al.*⁴²

HF patients with improved ejection fraction), global longitudinal strain at two-dimensional speckle-tracking echocardiography has been demonstrated to predict the occurrence of cardiovascular mortality or HF hospitalization.⁷⁵

Cardiac magnetic resonance presents greater contrast resolution than echocardiography, higher reproducibility and independence from the acoustic window, and informs on tissue changes with specific sequences such as late gadolinium enhancement (LGE),⁷⁶ T1-, T2- and extracellular volume (ECV) mapping. CMR has proved able to accurately track the remodelling process in patients with reperfused MI.⁷⁷ In the setting of HF, LGE absence or a lower LGE extent are strong predictors of RR.^{42–44,78–84} For example, LGE absence predicted RR in patients with non-ischæmic DCM with a high specificity (92%) and positive predictive value (91%),⁴³ and regardless of the severity of LV dilatation and dysfunction (Figure 3).^{42,44} In a recent study on 138 patients with recent-onset DCM and an initial LVEF <45%, re-worsening of LVEF was defined as an initial RR (to an intermediate LVEF \geq 45%) followed by AR (LVEF decrease >5% to a final value <45% after the initial LVEF recovery). High LGE burden, higher B-type natriuretic peptide (BNP) level, and lower LVEF at the initial LVEF recovery were independent predictors of LVEF re-worsening.⁸⁵ Moreover, patients with LVEF re-worsening ($n = 39$, 28%) showed a clinical prognosis (incidence of HF hospitalization and sudden death during a median 6-year follow-up) that was intermediate between those with RR ($n = 83$, 60%) and AR ($n = 16$, 12%).⁸⁵

A lower myocardial T2 and a lower ECV have been demonstrated to predict RR^{45,46}; nevertheless, only a lower LVEF and LGE absence remained independent predictors of RR at multivariable

analysis.⁴⁶ In another small study on 56 DCM patients, only LV contractile reserve at dobutamine stress CMR independently predicted RR, while LGE presence and extent, T1 and ECV did not.⁴⁷

Baseline and follow-up CMR scans allow to track myocardial tissue changes over time. LGE shows little or no increase during follow-up, its increase being associated with AR.^{42,44,45} Moreover, native T1, absolute ECV and absolute cellular volume decrease significantly in patients on optimized medical therapy, while T2 and percentage ECV seem to remain stable over time,⁴⁵ suggesting a balanced regression of both the cellular and the extracellular compartments during RR, mirroring the regression of LV volumes and mass.

To summarize, strain analysis at echocardiography and tissue characterization at CMR, including LGE, native T1, T2 and ECV mapping, have emerged as imaging predictors of RR, compared with traditional parameters such as LV volumes and ejection fraction.

Circulating biomarkers

Circulating biomarkers related to cardiac remodelling have been described in depth in the first part of the document. Herein, we will focus on their use to predict and monitor the process of remodelling.

B-type natriuretic peptide and N-terminal proBNP (NT-proBNP) are produced in equimolar fashion from the cleavage of the 108-aminoacid precursor proBNP by proprotein convertases such as corin and furin. The biologically active BNP is rapidly degraded by several peptidases, including neprilysin.⁸⁶

Natriuretic peptides are mainly released by ventricular cardiomyocytes in response to myocardial wall stretch due to volume or pressure overload. BNP plays a major role in HF pathophysiology given its diuretic, natriuretic, vasodilator and anti-hypertrophic properties.⁸⁶ BNP and NT-proBNP are routinely used for HF management in a large variety of clinical settings, from diagnosis to risk prediction.⁸⁷ Changes in natriuretic peptide levels across serial measurements reflect the variations of LV wall stretch over time, which is related with the evolution of LV volumes and systolic function, and then to RR. A pre-specified echocardiographic analysis of the Guiding Evidence Based Therapy Using Biomarker Intensified Treatment in Heart Failure (GUIDE-IT) trial examined the relationship between changes in NT-proBNP and RR in 268 HFrEF patients receiving medical therapy. The reduction in LV volumes and LVEF recovery were proportional to the magnitude of NT-proBNP decrease.⁸⁸ The Prospective Study of Biomarkers, Symptom Improvement, and Ventricular Remodeling During Sacubitril/Valsartan Therapy for Heart Failure (PROVE-HF) prospectively enrolled 794 patients with HFrEF starting sacubitril/valsartan. Changes in log-transformed NT-proBNP over 12 months correlated with changes in LVEF ($r = -0.381$), LVEDV index ($r = 0.320$), or LVESV index ($r = 0.405$) (Figure 4).⁸⁹ In a study on 732 patients with HFrEF and cardiac dyssynchrony randomized to CRT or medical therapy alone, NT-proBNP in the CRT arm decreased dramatically by 3 months (from baseline 1920 ng/L [interquartile range 744–4288] to 1112 ng/L [482–3053]) compared with the control arm (from baseline 1809 ng/L [719–3949] to 1649 ng/L [609–3704]), with sustained reductions to 18 months. NT-proBNP reductions following CRT were associated with significant improvements in LVESV, LVEDV and LVEF.⁹⁰

A relatively large fraction of patients with HF have elevated plasma troponin T and I. For example, in the Valsartan Heart Failure Trial (Val-HeFT), only 10% showed measurable troponin T with the conventional, non-high-sensitivity (hs) assays, and this fraction increased to up to 92% when samples were reassessed with a hs method.⁹¹ Circulating levels of troponins, particularly when measured through hs assays, allow accurately quantifying the intensity of ongoing cardiomyocyte damage.⁹² This damage may derive from the underlying myocardial insult (for example, a gene mutation) as well as chronic neurohormonal activation and haemodynamic overload.^{92,93} The relationship between hs-troponin levels and the severity of cardiac damage may explain the strong prognostic value of hs-troponins in HF patients,⁹⁴ and the possible relationship between serial hs-troponin values and cardiac remodelling. Limited information is available regarding the latter point. Patients with hs-troponin I in the lowest tertile (≤ 29 ng/L) 6 months after an episode of acute HF displayed a more prominent RR over the same time-span.⁹⁵ The ProBNP Outpatient Tailored Chronic Heart Failure Therapy (PROTECT) study evaluated 151 patients with HFrEF over 10 months, with visits every 3 months or more often if needed. A longer percent time with hs-troponin I ≤ 10.9 ng/L (i.e. the median value at baseline) was associated with a decrease in LVEDV index from baseline to follow-up; furthermore, patients with hs-troponin I ≤ 10.9 ng/L during all visits had

the highest frequency of LVEF improvement, and those with all values >10.9 ng/L had the lowest rates of LVEF increase.⁹⁶ Conversely, the time spent with hs-troponin T <14 ng/L (i.e. the upper reference limit) did not display an association with RR.⁹⁷

Soluble suppression of tumorigenesis-2 (sST2) is the soluble form of the receptor of interleukin-33 (IL-33). sST2 sequesters IL-33 and blocks its positive anti-hypertrophic and antifibrotic effects.⁹⁸ sST2 is released in the heart and extra-cardiac tissues (particularly the lung and vessels) in response to inflammatory and profibrotic stimuli and vascular congestion, and are strong predictors of outcome in patients with HF.⁹⁹ sST2 has been studied in several cardiac disorders, particularly MI and HF. sST2 correlates with the clinical severity of HF, LVEF and natriuretic peptide levels.^{100,101} In the PROTECT cohort, more time spent with sST2 <35 ng/ml predicted a decrease in LV end-diastolic index (odds ratio [OR] 1.22; 95% confidence interval [CI] 1.04–1.43; $p = 0.01$) after adjusting for relevant baseline variables.⁹⁷ Even lower baseline sST2 predicts the future occurrence of RR. Lupón *et al.*²⁷ developed a score to predict RR, named ST2-R2 score and including sST2 <48 ng/ml (3 points) together with non-ischaemic aetiology (5 points), absence of LBBB (4 points), HF duration <12 months (2 points), beta-blocker treatment (2 points), and baseline LVEF $<24\%$ (1 point). The frequency of RR ranged from 10% in patients scoring 2–5% to 86% in patients scoring 15–17. The score had area under the curve values of 0.79 and 0.73 in the derivation and validation cohorts, respectively.²⁷ Furthermore, a graded increase in LVEF (from +5.6% to +17.3%; $p < 0.001$), and a progressive reduction in LVESV index (from -6.1% to -32.1% ; $p < 0.001$) and in LV end-systolic diameter index (from -1.1% to -18.6% ; $p < 0.001$) were observed across ST2-R2 score values.⁴⁸ The ST2-R2 score then represents a valuable tool for the prediction of RR, and becomes even more appealing following the demonstration of a relationship between score values and all-cause mortality up to 4 years.⁴⁸

Galectin-3 (Gal-3) is a lectin secreted by macrophages and able to interact with several extracellular matrix proteins.¹⁰² Higher Gal-3 levels were associated with AR after MI^{103,104} and in patients with HFrEF.^{105,106} Conversely, a longer time spent with Gal-3 ≤ 20 ng/ml independently predicted a recovery from systolic dysfunction in HFrEF,⁴⁹ although Gal-3 seemed to have a lower prognostic value than sST2.²⁷ High preoperative Gal-3 was also independently associated with the lack of functional recovery after mitral valve repair.⁵⁰ Finally, Gal-3 concentrations were not found associated with CRT response in a Cardiac Resynchronization-Heart Failure (CARE-HF) trial sub-study.¹⁰⁷

Many circulating biomarkers related to myocardial fibrosis and hypertrophy have been reported to predict the evolution of LV volumes and function, such as several micro-RNAs,^{108,109} matrix metalloproteinases and their tissue inhibitors,¹¹⁰ osteoglycin (also known as mimecan, a protein regulating matrix remodelling and bone formation, and associated with myocardial hypertrophy¹¹¹),⁵¹ and orexin (a regulator of sleep/awake balance, blood pressure, heart rate, and sympathetic nerve activity).^{112,113} The evidence is too fragmentary to allow any definite

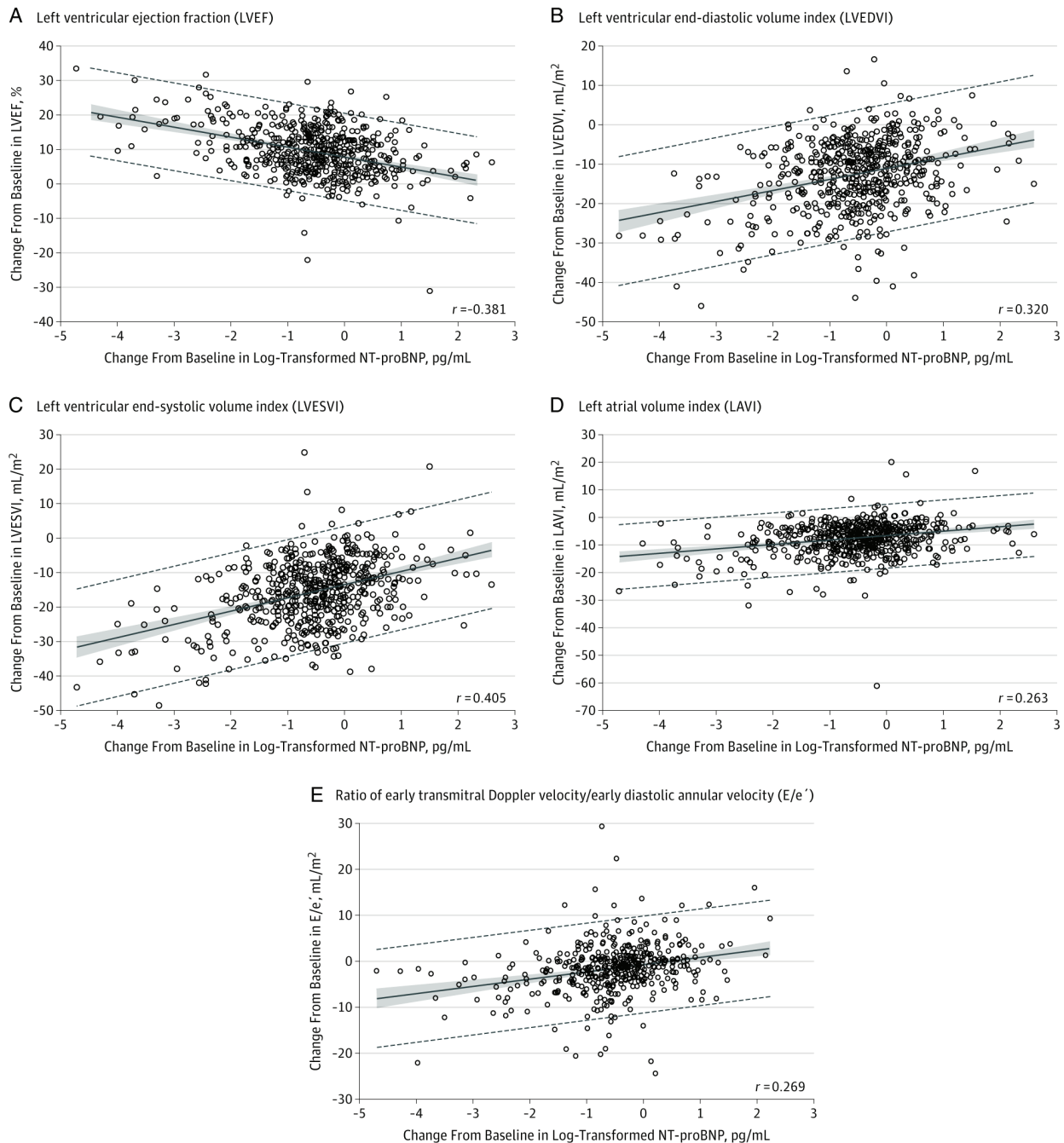


Figure 4 Relationship between changes in N-terminal pro-B-type natriuretic peptide (NT-proBNP) and left ventricular remodelling in patients on sacubitril/valsartan. Scatterplots detailing correlations between baseline and 12-month concentrations of log₂-transformed NT-proBNP and changes in left ventricular ejection fraction (LVEF), left ventricular end-diastolic volume index (LVEDVI), left ventricular end-systolic volume index (LVESVI), left atrial volume index (LAVI), and E/e' ratio. A mean regression line is detailed with 95% prediction limits demonstrated in dashed lines. The shaded regions indicate 95% confidence limits. Reprinted with permission from Januzzi *et al.*⁸⁹

conclusions about these molecules as remodelling biomarkers. Interestingly, a lower degree of cardiac fibrosis, as assessed by lower procollagen type I C-terminal propeptide (PICP; see Part 1) was found associated with a positive response after CRT implantation.¹¹⁴

To summarize, circulating levels of several biomarkers (most notably natriuretic peptides, hs-troponins, and sST2) reflect the severity of ongoing cardiac damage, and therefore allow to follow the remodelling process. The prognostic value of these biomarkers at baseline seems more limited.

Heart failure treatment and reverse remodelling

Drug therapy

Until recently, the pharmacological treatment of HFrEF relied on the combination of beta-blockers, angiotensin-converting enzyme inhibitors/angiotensin receptor blockers (ACEi/ARB) and possibly mineralocorticoid receptor antagonists (MRA). The historical trials on these therapies focused more on hard endpoints than RR.^{115–127} The Survival and Ventricular Enlargement (SAVE) trial provided some evidence that treatment with ACEi was effective in preventing RR after acute MI.¹²⁸ After the demonstration of a significant mortality benefit from enalapril in severe congestive HF from the data from the Cooperative North Scandinavian Enalapril Survival Study (CONSENSUS),¹²⁹ the Treatment Trial of Studies of Left Ventricular Dysfunction (SOLVD) showed that treatment with enalapril was also associated with a reversible reduction in LVEDV and LVESV and increase in LVEF (assessed by serial radionuclide ventriculograms), compared to placebo, in patients with mild to moderate HF.¹³⁰ Even in asymptomatic patients enrolled in the prevention arm of the SOLVD, enalapril administration appeared to slow ventricular dilatation.¹³¹ Such beneficial effects of ACEi on RR were additive to other strategies of neurohormonal antagonism.¹³² Furthermore, beta-blockers were found to independently predict RR in patients with asymptomatic LV systolic dysfunction¹³³ or HFrEF,^{27,53–55} starting after at least 1 month of therapy.⁵³ The prognostic value of drugs for neurohormonal antagonism did not emerge clearly in studies where most patients are on beta-blockers and ACEi/ARB, and many on MRA. For example, in a cohort where 94.4% of patients were on beta-blockers, 94.1% on ACEi/ARB, and 46.1% on MRA, these therapies did not independently predict RR.²⁷ Nonetheless, an early increase in LVEF following the start of HF therapies was observed in the same cohort (Figure 2), supporting the notion that beta-blockers, ACEi/ARB and MRA promote RR.²⁶ Based on an analysis of the A systems BIOlogy Study to Tailored Treatment in Chronic Heart Failure (BIOSAT-CHF) registry, different remodelling patterns could be associated with a different response to therapy in patients with HFrEF. Indeed, up-titration of beta-blockers conferred a mortality benefit to patients with HFrEF and eccentric LV hypertrophy, but not to those with concentric hypertrophy (p for interaction < 0.001), while ACEi/ARB tended to be more effective in patients with concentric hypertrophy. MRA were not specifically analysed.¹³⁴ Spironolactone has been evaluated in patients at risk of developing HF (namely individuals with or at high risk of coronary artery disease and with raised natriuretic peptides), and patients with HFpEF. In the first setting, spironolactone treatment for 9 months had no appreciable effects on cardiac geometry or function except for a reduction in LA volume compared with controls.¹³⁵ As for HFpEF, 12 to 18 months of therapy with spironolactone was not associated with alterations in cardiac structure or function in a sub-analysis of the Treatment Of Preserved Cardiac Function Heart Failure with an Aldosterone Antagonist (TOPCAT) trial.¹³⁶

More recent studies examined the additive benefit of novel drugs such as sacubitril/valsartan or sodium–glucose cotransporter 2

inhibitors (SGLT2i). The non-randomized PROVE-HF study demonstrated a significant 37% reduction in NT-proBNP after initiation of sacubitril/valsartan; reduction in NT-proBNP was strongly associated with reverse cardiac remodelling. For example, from a baseline LVEF of 28%, by 12 months LVEF increased an average of 9.4%; many patients had even more dramatic improvement.⁸⁹ In a similar fashion, there were decreases in indexed LV and LA volumes, LV mass index, and improvement in diastolic function as reflected in reduction of E/e' ratio. Results were consistent between those with new-onset HF and/or those not taking an ACEi or ARB at enrolment ($n = 118$ at baseline), or those not achieving the target sacubitril/valsartan dose ($n = 264$).⁸⁹ Interestingly, among patients eligible to cardioverter-defibrillator implantation for primary prevention at baseline, 32% improved their ejection fraction to $>35\%$ by 6 months and 62% to $>35\%$ by 12 months after initiation of sacubitril/valsartan therapy.¹³⁷ The randomized Study of Effects of Sacubitril/Valsartan vs. Enalapril on Aortic Stiffness in Patients With Mild to Moderate HF With Reduced Ejection Fraction (EVALUATE-HF) trial compared sacubitril/valsartan with enalapril, on top of beta-blocker therapy in most patients, and MRA in one quarter of patients. Sacubitril/valsartan proved more effective in reducing LV volumes as well as in relieving diastolic dysfunction and LA dilatation, while it did not cause a greater recovery in LVEF.¹³⁸

A meta-analysis on SGLT2i and RR included 13 trials and a total of 1251 patients. SGLT2i therapy was found to significantly improve LVEF (standardized mean difference [SMD] 0.35, 95% CI 0.04–0.65; $p = 0.03$), LV mass index (SMD -0.27 , 95% CI -0.49 to -0.05 ; $p = 0.02$), LVESV index (SMD -0.35 ml/m², 95% CI -0.64 to -0.05 ; $p = 0.02$), and E-wave deceleration time (SMD -0.37 , 95% CI -0.70 to -0.05 ; $p = 0.02$) in the overall population. The favourable effects of SGLT2i on LV remodelling were particularly evident in patients with HFrEF, with no interaction with glycaemic status. Among the four SGLT2i included, empagliflozin was associated with a greater improvement of LV mass index, LVESV index and LVEDV index (all $p < 0.05$).⁵⁸

Sparse evidence is available on other HF drugs. A sub-analysis of the Systolic Heart Failure Treatment with the I_f Inhibitor Ivabradine Trial (SHIFT) found that ivabradine reverses cardiac remodelling in patients with HF and LV systolic dysfunction (LVEF $\leq 35\%$).⁵⁶ Even a 20-week treatment with cardiac myosin activator omecamtiv mecarbil improved cardiac systolic function (as assessed through global longitudinal and circumferential strain) on top of optimal medical therapy for HFrEF.⁵⁷

In a meta-analysis of randomized controlled trials, the magnitude of remodelling effects induced by drug or device therapy has been associated with a decreased risk of death on the long term.⁶⁸ HF therapy should be continued even after RR has been reached. Indeed, the small Therapy withdrawal in REcovered Dilated cardiomyopathy-Heart Failure (TRED-HF) trial showed that withdrawing HF therapy leads to a rapid reduction in biventricular systolic function and an increase in LV mass in patients recovering from HFrEF.²³

To summarize, optimal medical therapy (now including sacubitril/valsartan and SGLT2i) promote RR, and therapy should not be withdrawn after recovery.

Interventional procedures and devices

Coronary revascularization, either surgical or percutaneous, has been demonstrated to induce RR in patients with chronic ischaemic cardiomyopathy,^{139,140} particularly in the presence of viable myocardium as assessed through dobutamine stress echocardiography, myocardial perfusion nuclear scan or CMR.^{64–66} Mitral valve surgical repair⁶⁰ and percutaneous mitral valve interventions⁶¹ reduce volume overload to the left ventricle and might potentially lead to RR. Nonetheless, percutaneous mitral valve repair just slowed down the decline of LVEF and the increase in LV volumes even in the Cardiovascular Outcomes Assessment of the MitraClip Percutaneous Therapy for Heart Failure Patients With Functional Mitral Regurgitation Trial (COAPT),¹⁴¹ where the intervention conferred a prognostic benefit,¹⁴² contrary to the Multicentre Study of Percutaneous Mitral Valve Repair MitraClip Device in Patients With Severe Secondary Mitral Regurgitation (MITRA-FR).¹⁴³ An appreciable RR was found only in trials using the CARILLON[®] device, particularly in the Carillon Mitral Contour System for Reducing Functional Mitral Regurgitation (REDUCE-FMR).⁶²

In the general population, RR after surgical aortic valve surgery for either stenosis or regurgitation is predicted by a higher pre-operative LVEF and lower LVESV, while patients with severe LV dysfunction usually do not experience RR.^{144–146} A variable degree of RR, affecting LV function, size and mass, has been reported also in patients undergoing transcatheter aortic valve replacement (TAVR), following afterload reduction.^{147,148} Even patients with low-flow, low-gradient aortic stenosis may experience RR after TAVR,⁶³ reasonably until the left ventricle has not been irreversibly damaged by the longstanding elevation of LV afterload. The presence of myocardial oedema¹⁴⁹ and the absence of myocardial fibrosis¹⁵⁰ have been shown to predict RR after TAVR, but further larger studies are needed to identify reliable predictors of RR after TAVR.

Patients receiving CRT may experience a substantial recovery of LV volumes and function, occasionally with a ‘super-response’ (defined as absolute LVEF increase $\geq 15\%$), which in turn is associated with better quality of life and survival. Predictors of ‘super-response’ to CRT include female sex (OR 1.96, 95% CI 1.32–2.90, $p = 0.001$), absence of prior MI (OR 1.80, 95% CI 1.20–2.71, $p = 0.005$), presence of LBBB (OR 2.05, 95% CI 1.24–3.40, $p = 0.006$), QRS duration ≥ 150 ms (OR 1.79, 95% CI 1.17–2.73, $p = 0.007$), absence of obesity (OR 1.51, 95% CI 1.03–2.20, $p = 0.035$), smaller baseline LA volume index (OR 1.47, 95% CI 1.21–1.79, $p < 0.001$),⁵⁹ absence of LGE in the LV pacing region,^{151,152} and also myocardial contractile reserve assessed by dobutamine stress echocardiography.¹⁵³

In summary, surgical or percutaneous correction of mitral regurgitation may improve outcomes in selected patients without inducing a significant RR. Several predictors of super-response to CRT have been identified.

Future perspectives

The therapeutic approach to HFrEF (and to a lesser extent to the other forms of HF) is quite standardized,¹⁵⁴ but some choices

between alternative drug options, the timing of drug up-titration, follow-up visits and device implantation must be decided on an individual basis according to patient history and the predicted evolution of disease.

Cardiac dysfunction develops following an insult to the heart (such as a MI, a myocarditis, or the effects of a gene mutation), and the detrimental consequences of a sustained activation of compensatory mechanisms (such as the sympathetic and renin–angiotensin–aldosterone systems). Conversely, disease-modifying therapies mitigate cardiac damage. The net effect of these opposing forces will drive cardiac geometry and function towards a further decline (AR), a substantial stability, an improvement (RR), or even a normalization. Many factors influence the individual response to cardiac damage and HF therapies, and multiple clinical, imaging and laboratory findings may help predict functional recovery. The search for reliable predictors has been hampered by the lack of definitions of AR, and the plethora of definitions of RR. There is a clear need for large studies with core lab reading of serial echocardiograms (to limit the intrinsic variability of transthoracic echocardiography) or repeated CMR exams. These studies should lead to standardized definitions of RR and AR, which could be used in clinical practice and as surrogate endpoints in clinical trials. Preference should be given to simple criteria that can be readily employed and hold prognostic value for hard endpoints. The most commonly used definition of RR is percent LVESV decrease $\geq 15\%$. Although two LVEF-based criteria (LVEF increase > 10 U, and LVEF increase ≥ 1 category) were more predictive of cardiovascular death,¹⁸ it is reasonable to consider percent LVESV decrease $\geq 15\%$ as a standardized definition of RR. Proposing a definition of AR is more challenging. Future studies may consider the following three criteria: (1) the change in category from HFpEF to HFmrEF or HFrEF, or from HFmrEF to HFrEF,²⁴ (2) percent LVEDV increase $\geq 15\%$ (a criterion proposed in a study on post-MI remodelling,²² and easy to remember because the change value is the same as in the proposed definition of RR), or (3) percent LVESV decrease $\geq 15\%$ (simply as the inverse of RR).

As other suggestions for future research, we may envisage a better understanding of cardiac remodelling as a process involving dynamic changes in LV mass, diastolic function, as well as the LA and also right heart chambers. We may also advocate for a more extensive application of serial echocardiography and biomarker measurements in clinical practice, to refine the management strategy according to the evolution of cardiac geometry and function over time and the intensity of ongoing cardiac damage, the latter evaluated based on natriuretic peptides and possibly also hs-troponins.

Supplementary Information

Additional supporting information may be found online in the Supporting Information section at the end of the article.

Conflict of interest: none declared.

References

- Cheng S, Xanthakis V, Sullivan LM, Lieb W, Massaro J, Aragam J, et al. Correlates of echocardiographic indices of cardiac remodeling over the adult life

- course: longitudinal observations from the Framingham heart study. *Circulation* 2010;**122**:570–8.
2. Maceira AM, Prasad SK, Khan M, Pennell DJ. Reference right ventricular systolic and diastolic function normalized to age, gender and body surface area from steady-state free precession cardiovascular magnetic resonance. *Eur Heart J*. 2006;**27**:2879–88.
 3. Maceira AM, Prasad SK, Khan M, Pennell DJ. Normalized left ventricular systolic and diastolic function by steady state free precession cardiovascular magnetic resonance. *J Cardiovasc Magn Reson*. 2006;**8**:417–26.
 4. Kawel-Boehm N, Hetzel SJ, Ambale-Venkatesh B, Captur G, Francois CJ, Jerosch-Herold M, et al. Reference ranges ("normal values") for cardiovascular magnetic resonance (CMR) in adults and children: 2020 update. *J Cardiovasc Magn Reson* 2020;**22**:87.
 5. Sanghavi M, Rutherford JD. Cardiovascular physiology of pregnancy. *Circulation*. 2014;**130**:1003–8.
 6. Morganroth J, Maron BJ, Henry WL, Epstein SE. Comparative left ventricular dimensions in trained athletes. *Ann Intern Med*. 1975;**82**:521–4.
 7. Brosnan MJ, Rakhit D. Differentiating athlete's heart from cardiomyopathies – the left side. *Heart Lung Circ*. 2018;**27**:1052–62.
 8. Carbone A, D'Andrea A, Riegler L, Scarafie R, Pezzullo E, Martone F, et al. Cardiac damage in athlete's heart: when the "supernormal" heart fails! *World J Cardiol*. 2017;**9**:470–80.
 9. Drazner MH, Rame JE, Marino EK, Gottdiener JS, Kitzman DW, Gardin JM, et al. Increased left ventricular mass is a risk factor for the development of a depressed left ventricular ejection fraction within five years: the Cardiovascular Health Study. *J Am Coll Cardiol* 2004;**43**:2207–15.
 10. Velagaleti RS, Gona P, Pencina MJ, Aragam J, Wang TJ, Levy D, et al. Left ventricular hypertrophy patterns and incidence of heart failure with preserved versus reduced ejection fraction. *Am J Cardiol* 2014;**113**:117–22.
 11. von Jeinsen B, Short MI, Larson MG, Xanthakis V, McManus DD, Benjamin EJ, et al. Prognostic significance of echocardiographic measures of cardiac remodeling. *J Am Soc Echocardiogr*. 2020;**33**:72–81.e6.
 12. Yeboah J, Bluemke DA, Hundley WG, Rodriguez CJ, Lima JA, Herrington DM. Left ventricular dilation and incident congestive heart failure in asymptomatic adults without cardiovascular disease: Multi-Ethnic Study of Atherosclerosis (MESA). *J Card Fail*. 2014;**20**:905–11.
 13. Yeboah J, Rodriguez CJ, Stacey B, Lima JA, Liu S, Carr JJ, et al. Prognosis of individuals with asymptomatic left ventricular systolic dysfunction in the Multi-Ethnic Study of Atherosclerosis (MESA). *Circulation* 2012;**126**:2713–9.
 14. Koitabashi N, Kass DA. Reverse remodeling in heart failure – mechanisms and therapeutic opportunities. *Nat Rev Cardiol*. 2011;**9**:147–57.
 15. Merlo M, Caiffa T, Gobbo M, Adamo L, Sinagra G. Reverse remodeling in dilated cardiomyopathy: insights and future perspectives. *Int J Cardiol Heart Vasc*. 2018;**18**:52–7.
 16. Konstam MA, Kramer DG, Patel AR, Maron MS, Udelson JE. Left ventricular remodeling in heart failure: current concepts in clinical significance and assessment. *JACC Cardiovasc Imaging*. 2011;**4**:98–108.
 17. Halliday BP, Wassall R, Lota AS, Khalique Z, Gregson J, Newsome S, et al. Withdrawal of pharmacological treatment for heart failure in patients with recovered dilated cardiomyopathy (TRED-HF): an open-label, pilot, randomised trial. *Lancet* 2019;**393**:61–73.
 18. Aimo A, Fabiani I, Vergaro G, Arzilli C, Chubuchny V, Pasanisi EM, et al. Prognostic value of reverse remodelling criteria in heart failure with reduced or mid-range ejection fraction. *ESC Heart Fail* 2021;**8**:3014–25.
 19. Wong M, Staszewsky L, Latini R, Barlera S, Glazer R, Aknay N, et al. Severity of left ventricular remodeling defines outcomes and response to therapy in heart failure: Valsartan Heart Failure Trial (Val-HeFT) echocardiographic data. *J Am Coll Cardiol* 2004;**43**:2022–7.
 20. Solomon SD, Skali H, Anavekar NS, Bourgoun M, Barvik S, Ghali JK, et al. Changes in ventricular size and function in patients treated with valsartan, captopril, or both after myocardial infarction. *Circulation* 2005;**111**:3411–9.
 21. Bolognese L, Neskovic AN, Parodi G, Cerisano G, Buonamici P, Santoro GM, et al. Left ventricular remodeling after primary coronary angioplasty: patterns of left ventricular dilation and long-term prognostic implications. *Circulation* 2002;**106**:2351–7.
 22. Pezel T, des Besseyre Horts T, Schaaf M, Croisille P, Bière L, Garcia-Dorado D, et al. Predictive value of early cardiac magnetic resonance imaging functional and geometric indexes for adverse left ventricular remodelling in patients with anterior ST-segment elevation myocardial infarction: a report from the CIRCUS study. *Arch Cardiovasc Dis*. 2020;**113**:710–20.
 23. Halliday BP, Owen R, Gregson J, Vassiliou VS, Chen X, Wage R, et al. Myocardial remodelling after withdrawing therapy for heart failure in patients with recovered dilated cardiomyopathy: insights from TRED-HF. *Eur J Heart Fail*. 2021;**23**:293–301.
 24. Savarese G, Vedin O, D'Amario D, Uijl A, Dahlström U, Rosano G, et al. Prevalence and prognostic implications of longitudinal ejection fraction change in heart failure. *JACC Heart Fail* 2019;**7**:306–17.
 25. Aimo A, Vergaro G, Castiglione V, Barison A, Pasanisi E, Petersen C, et al. Effect of sex on reverse remodeling in chronic systolic heart failure. *JACC Heart Fail* 2017;**5**:735–42.
 26. Lupón J, Gavidia-Bovadilla G, Ferrer E, de Antonio M, Perera-Lluna A, López-Ayerbe J, et al. Dynamic trajectories of left ventricular ejection fraction in heart failure. *J Am Coll Cardiol* 2018;**72**:591–601.
 27. Lupón J, Gaggin HK, de Antonio M, Domingo M, Galan A, Zamora E, et al. Biomarker-assist score for reverse remodeling prediction in heart failure: the ST2-R2 score. *Int J Cardiol*. 2015;**184**:337–43.
 28. Wilcox JE, Fonarow GC, Yancy CV, Albert NM, Curtis AB, Heywood JT, et al. Factors associated with improvement in ejection fraction in clinical practice among patients with heart failure: findings from IMPROVE HF. *Am Heart J* 2012;**163**:49–56.e2.
 29. Merlo M, Pyxaras SA, Pinamonti B, Barbati G, Di Lenarda A, Sinagra G. Prevalence and prognostic significance of left ventricular reverse remodeling in dilated cardiomyopathy receiving tailored medical treatment. *J Am Coll Cardiol*. 2011;**57**:1468–76.
 30. Eichhorn EJ, Heesch CM, Risser RC, Marcoux L, Hatfield B. Predictors of systolic and diastolic improvement in patients with dilated cardiomyopathy treated with metoprolol. *J Am Coll Cardiol*. 1995;**25**:154–62.
 31. Teeter WA, Thibodeau JT, Rao K, Brickner ME, Toto KH, Nelson LL, et al. The natural history of new-onset heart failure with a severely depressed left ventricular ejection fraction: implications for timing of implantable cardioverter-defibrillator implantation. *Am Heart J* 2012;**164**:358–64.
 32. Metra M, Nodari S, Parrinello G, Giubbini R, Manca C, Dei Cas L. Marked improvement in left ventricular ejection fraction during long-term beta-blockade in patients with chronic heart failure: clinical correlates and prognostic significance. *Am Heart J*. 2003;**145**:292–9.
 33. Mastenbroek MH, Van't Sant J, Versteeg H, Cramer MJ, Doevendans PA, Pedersen SS, et al. Relationship between reverse remodeling and cardiopulmonary exercise capacity in heart failure patients undergoing cardiac resynchronization therapy. *J Card Fail*. 2016;**22**:385–94.
 34. Park SM, Kim YH, Ahn CM, Hong SJ, Lim DS, Shim WJ. Relationship between ultrasonic tissue characterization and myocardial deformation for prediction of left ventricular reverse remodelling in non-ischaemic dilated cardiomyopathy. *Eur J Echocardiogr*. 2011;**12**:887–94.
 35. Pitzalis MV, Iacoviello M, Romito R, Massari F, Rizzon B, Luzzi G, et al. Cardiac resynchronization therapy tailored by echocardiographic evaluation of ventricular asynchrony. *J Am Coll Cardiol* 2002;**40**:1615–22.
 36. Bax JJ, Bleeker GB, Marwick TH, Molhoek SG, Boersma E, Steendijk P, et al. Left ventricular dyssynchrony predicts response and prognosis after cardiac resynchronization therapy. *J Am Coll Cardiol* 2004;**44**:1834–40.
 37. Lim P, Donal E, Lafitte S, Derumeaux G, Habib G, Reant P, et al. Multicentre study using strain delay index for predicting response to cardiac resynchronization therapy (MUSIC study). *Eur J Heart Fail*. 2011;**13**:984–91.
 38. Bank AJ, Gage RM, Marek JJ, Onishi T, Burns KV, Schwartzman D, et al. Mechanical dyssynchrony is additive to ECG criteria and independently associated with reverse remodelling and clinical response to cardiac resynchronization therapy in patients with advanced heart failure. *Open Heart* 2015;**2**:e000246.
 39. Chung ES, Leon AR, Tavazzi L, Sun JP, Nihoyannopoulos P, Merlino J, et al. Results of the Predictors of Response to CRT (PROSPECT) trial. *Circulation* 2008;**117**:2608–16.
 40. Gorcsan J 3rd, Sogaard P, Bax JJ, Singh JP, Abraham WT, Borer JS, et al. Association of persistent or worsened echocardiographic dyssynchrony with unfavourable clinical outcomes in heart failure patients with narrow QRS width: a subgroup analysis of the EchoCRT trial. *Eur Heart J*. 2016;**37**:49–59.
 41. Mor-Avi V, Lang RM, Badano LP, Belohlavek M, Cardim NM, Derumeaux G, et al. Current and evolving echocardiographic techniques for the quantitative evaluation of cardiac mechanics: ASE/EAE consensus statement on methodology and indications endorsed by the Japanese Society of Echocardiography. *Eur J Echocardiogr* 2011;**12**:167–205.
 42. Masci PG, Schuurman R, Andrea B, Ripoli A, Coceani M, Chiappino S, et al. Myocardial fibrosis as a key determinant of left ventricular remodeling in idiopathic dilated cardiomyopathy: a contrast-enhanced cardiovascular magnetic study. *Circ Cardiovasc Imaging* 2013;**6**:790–9.
 43. Kida K, Yoneyama K, Kobayashi Y, Takano M, Akashi YJ, Miyake F. Late gadolinium enhancement on cardiac magnetic resonance images predicts reverse remodeling in patients with nonischemic cardiomyopathy treated with carvedilol. *Int J Cardiol*. 2013;**168**:1588–9.
 44. Barison A, Aimo A, Ortalda A, Todiere G, Grigoratos C, Passino C, et al. Late gadolinium enhancement as a predictor of functional recovery, need for

- defibrillator implantation and prognosis in non-ischemic dilated cardiomyopathy. *Int J Cardiol* 2018;**250**:195–200.
45. Xu Y, Li W, Wan K, Liang Y, Jiang X, Wang J, et al. Myocardial tissue reverse remodeling after guideline-directed medical therapy in idiopathic dilated cardiomyopathy. *Circ Heart Fail* 2021;**14**:e007944.
 46. Inui K, Asai K, Tachi M, Yoshinaga A, Izumi Y, Kubota Y, et al. Extracellular volume fraction assessed using cardiovascular magnetic resonance can predict improvement in left ventricular ejection fraction in patients with dilated cardiomyopathy. *Heart Vessels* 2018;**33**:1195–203.
 47. Tayal U, Wage R, Newsome S, Manivarmane R, Izgi C, Muthumala A, et al. Predictors of left ventricular remodelling in patients with dilated cardiomyopathy – a cardiovascular magnetic resonance study. *Eur J Heart Fail* 2020;**22**:1160–70.
 48. Lupon J, Sanders-van Wijk S, Januzzi JL, de Antonio M, Gaggin HK, Pfisterer M, et al. Prediction of survival and magnitude of reverse remodeling using the ST2-R2 score in heart failure: a multicenter study. *Int J Cardiol*. 2016;**204**:242–7.
 49. Motiwala SR, Szymonifka J, Belcher A, Weiner RB, Baggish AL, Sluss P, et al. Serial measurement of galectin-3 in patients with chronic heart failure: results from the ProBNP Outpatient Tailored Chronic Heart Failure Therapy (PROTECT) study. *Eur J Heart Fail* 2013;**15**:1157–63.
 50. Kortekaas KA, Hoogslag GE, de Boer RA, Dokter MM, Versteegh MI, Braun J, et al. Galectin-3 and left ventricular reverse remodelling after surgical mitral valve repair. *Eur J Heart Fail*. 2013;**15**:1011–8.
 51. Motiwala SR, Szymonifka J, Belcher A, Weiner RB, Baggish AL, Gaggin HK, et al. Measurement of novel biomarkers to predict chronic heart failure outcomes and left ventricular remodeling. *J Cardiovasc Transl Res* 2014;**7**:250–61.
 52. Ono K. microRNAs and cardiovascular remodeling. *Adv Exp Med Biol*. 2015;**888**:197–213.
 53. Hall SA, Cigarroa CG, Marcoux L, Risser RC, Grayburn PA, Eichhorn EJ. Time course of improvement in left ventricular function, mass and geometry in patients with congestive heart failure treated with beta-adrenergic blockade. *J Am Coll Cardiol*. 1995;**25**:1154–61.
 54. Doughty RN, Whalley GA, Gamble G, MacMahon S, Sharpe N. Left ventricular remodeling with carvedilol in patients with congestive heart failure due to ischemic heart disease. Australia-New Zealand Heart Failure Research Collaborative Group. *J Am Coll Cardiol*. 1997;**29**:1060–6.
 55. Palazzuoli A, Bruni F, Puccetti L, Pastorelli M, Angori P, Pasqui AL, et al. Effects of carvedilol on left ventricular remodeling and systolic function in elderly patients with heart failure. *Eur J Heart Fail* 2002;**4**:765–70.
 56. Tardif JC, O'Meara E, Komajda M, Böhm M, Borer JS, Ford I, et al.; SHIFT Investigators. Effects of selective heart rate reduction with ivabradine on left ventricular remodelling and function: results from the SHIFT echocardiography substudy. *Eur Heart J* 2011;**32**:2507–15.
 57. Biering-Sørensen T, Minamisawa M, Claggett B, Liu J, Felker GM, McMurray JJV, et al. Cardiac myosin activator omecamtiv mecarbil improves left ventricular myocardial deformation in chronic heart failure: the COSMIC-HF trial. *Circ Heart Fail*. 2020;**13**:e008007.
 58. Zhang N, Wang Y, Tse G, Korantzopoulos P, Letsas KP, Zhang Q, et al. Effect of sodium-glucose cotransporter-2 inhibitors on cardiac remodelling: a systematic review and meta-analysis. *Eur J Prev Cardiol*. 2022;**28**:1961–73.
 59. Hsu JC, Solomon SD, Bourgoun M, McNitt S, Goldenberg I, Klein H, et al. Predictors of super-response to cardiac resynchronization therapy and associated improvement in clinical outcome: the MADIT-CRT (Multicenter Automatic Defibrillator Implantation Trial with Cardiac Resynchronization Therapy) study. *J Am Coll Cardiol* 2012;**59**:2366–73.
 60. Song BG, On YK, Jeon ES, Kim DK, Lee SC, Park SW, et al. Atrioventricular reverse remodeling after valve repair for chronic severe mitral regurgitation: 1-year follow-up. *Clin Cardiol* 2010;**33**:630–7.
 61. Scandura S, Ussia GP, Capranzano P, Caggegi A, Sarkar K, Cammalleri V, et al. Left cardiac chambers reverse remodeling after percutaneous mitral valve repair with the MitraClip system. *J Am Soc Echocardiogr* 2012;**25**:1099–105.
 62. Giallauria F, Di Lorenzo A, Parlato A, Testa C, Bobbio E, Vigorito C, et al. Individual patient data meta-analysis of the effects of the CARILLON® mitral contour system. *ESC Heart Fail*. 2020;**7**:3383–91.
 63. Kamperidis V, Joyce E, Debonnaire P, Katsanos S, van Rosendaal PJ, van der Kley F, et al. Left ventricular functional recovery and remodeling in low-flow low-gradient severe aortic stenosis after transcatheter aortic valve implantation. *J Am Soc Echocardiogr* 2014;**27**:817–25.
 64. Skala T, Hutyrá M, Vaclavík J, Kamínek M, Horák D, Novotný J, Zapletalová J, et al. Prediction of long-term reverse left ventricular remodeling after revascularization or medical treatment in patients with ischemic cardiomyopathy: a comparative study between SPECT and MRI. *Int J Cardiovasc Imaging* 2011;**27**:343–53.
 65. Chan J, Khafagi F, Young AA, Cowan BR, Thompson C, Marwick TH. Impact of coronary revascularization and transmural extent of scar on regional left ventricular remodelling. *Eur Heart J*. 2008;**29**:1608–17.
 66. Kim RJ, Wu E, Rafael A, Chen EL, Parker MA, Simonetti O, et al. The use of contrast-enhanced magnetic resonance imaging to identify reversible myocardial dysfunction. *N Engl J Med* 2000;**343**:1445–53.
 67. Aimo A, Gaggin HK, Barison A, Emdin M, Januzzi JL Jr. Imaging, biomarker, and clinical predictors of cardiac remodeling in heart failure with reduced ejection fraction. *JACC Heart Fail*. 2019;**7**:782–94.
 68. Kramer DG, Trikalinos TA, Kent DM, Antonopoulos GV, Konstam MA, Udelson JE. Quantitative evaluation of drug or device effects on ventricular remodeling as predictors of therapeutic effects on mortality in patients with heart failure and reduced ejection fraction: a meta-analytic approach. *J Am Coll Cardiol*. 2010;**56**:392–406.
 69. Piro M, Della Bona R, Abbate A, Biasucci LM, Crea F. Sex-related differences in myocardial remodeling. *J Am Coll Cardiol*. 2010;**55**:1057–65.
 70. Hazebroek MR, Moors S, Dennert R, van den Wijngaard A, Krapels I, Hoos M, et al. Prognostic relevance of gene-environment interactions in patients with dilated cardiomyopathy: applying the MOGE(S) classification. *J Am Coll Cardiol* 2015;**66**:1313–23.
 71. Dal Ferro M, Stolfo D, Altinier A, Gigli M, Perrieri M, Ramani F, et al. Association between mutation status and left ventricular reverse remodelling in dilated cardiomyopathy. *Heart* 2017;**103**:1704–10.
 72. Jung IH, Park JH, Lee JA, Kim GS, Lee HY, Byun YS, et al. Left ventricular global longitudinal strain as a predictor for left ventricular reverse remodeling in dilated cardiomyopathy. *JACC Cardiovasc Imaging* 2020;**28**:137–49.
 73. Huttin O, Coiro S, Selton-Suty C, Juillièrè Y, Donal E, Magne J, et al. Prediction of left ventricular remodeling after a myocardial infarction: role of myocardial deformation: a systematic review and meta-analysis. *PLoS One* 2016;**11**:e0168349.
 74. Marsan NA, Breithardt OA, Delgado V, Bertini M, Tops LF. Predicting response to CRT. The value of two- and three-dimensional echocardiography. *Europace*. 2008; **10** Suppl 3:iii73–9.
 75. Janwanishstaporn S, Cho JY, Feng S, Brann A, Seo JS, Narezkina A, et al. Prognostic value of global longitudinal strain in patients with heart failure with improved ejection fraction. *JACC Heart Fail* 2022;**10**:27–37.
 76. Barison A, Grigoratos C, Todiere G, Aquaro GD. Myocardial interstitial remodelling in non-ischaemic dilated cardiomyopathy: insights from cardiovascular magnetic resonance. *Heart Fail Rev*. 2015;**20**:731–49.
 77. Mewton N, Roubille F, Bresson D, Prieur C, Bouleti C, Bochaton T, et al.; COVERT-MI Study Investigators. Effect of colchicine on myocardial injury in acute myocardial infarction. *Circulation* 2021;**144**:859–69.
 78. Leong DP, Chakrabarty A, Shipp N, Molaei P, Madsen PL, Joerg L, et al. Effects of myocardial fibrosis and ventricular dyssynchrony on response to therapy in new-presentation idiopathic dilated cardiomyopathy: insights from cardiovascular magnetic resonance and echocardiography. *Eur Heart J* 2012;**33**:640–8.
 79. Kubanek M, Sramko M, Maluskova J, Kautznerova D, Weichet J, Lupinek P, et al. Novel predictors of left ventricular reverse remodeling in individuals with recent-onset dilated cardiomyopathy. *J Am Coll Cardiol* 2013;**61**:54–63.
 80. Nabeta T, Inomata T, Iida Y, Ikeda Y, Iwamoto M, Ishii S, et al. Baseline cardiac magnetic resonance imaging versus baseline endomyocardial biopsy for the prediction of left ventricular reverse remodeling and prognosis in response to therapy in patients with idiopathic dilated cardiomyopathy. *Heart Vessels* 2014;**29**:784–92.
 81. Ikeda Y, Inomata T, Fujita T, Iida Y, Nabeta T, Ishii S, et al. Cardiac fibrosis detected by magnetic resonance imaging on predicting time course diversity of left ventricular reverse remodeling in patients with idiopathic dilated cardiomyopathy. *Heart Vessels* 2016;**31**:1817–25.
 82. Ishii S, Inomata T, Fujita T, Iida Y, Ikeda Y, Nabeta T, et al. Clinical significance of endomyocardial biopsy in conjunction with cardiac magnetic resonance imaging to predict left ventricular reverse remodeling in idiopathic dilated cardiomyopathy. *Heart Vessels* 2016;**31**:1960–8.
 83. Chimura M, Onishi T, Tsukishiro Y, Sawada T, Kiuchi K, Shimane A, et al. Longitudinal strain combined with delayed-enhancement magnetic resonance improves risk stratification in patients with dilated cardiomyopathy. *Heart* 2017;**103**:679–86.
 84. Merlo M, Masè M, Vitrella G, Belgrano M, Faganello G, Di Giusto F, et al. Usefulness of addition of magnetic resonance imaging to echocardiographic imaging to predict left ventricular reverse remodeling in patients with nonischemic cardiomyopathy. *Am J Cardiol*. 2018;**122**:490–7.
 85. Nabeta T, Ishii S, Ikeda Y, Maemura K, Oki T, Yazaki M, et al. Late gadolinium enhancement for re-worsening left ventricular ejection fraction in patients with dilated cardiomyopathy. *ESC Heart Fail* 2021;**8**:615–24.
 86. Goetze JP, Bruneau BG, Ramos HR, Ogawa T, de Bold MK, de Bold AJ. Cardiac natriuretic peptides. *Nat Rev Cardiol*. 2020;**17**:698–717.
 87. Ponikowski P, Voors AA, Anker SD, Bueno H, Cleland JG, Coats AJ, et al. 2016 ESC Guidelines for the diagnosis and treatment of acute and chronic heart

- failure: The Task Force for the diagnosis and treatment of acute and chronic heart failure of the European Society of Cardiology (ESC). Developed with the special contribution of the Heart Failure Association (HFA) of the ESC. *Eur J Heart Fail* 2016;**18**:891–975.
88. Daubert MA, Adams KF, Yow E, Barnhart HX, Douglas PS, Rimmer S, et al. NT-proBNP goal achievement is associated with significant reverse remodeling and improved clinical outcomes in HFrEF. *JACC Heart Fail*. 2019;**7**:158–68.
 89. Januzzi JL Jr, Prescott MF, Butler J, Felker GM, Maisel AS, McCague K, et al.; PROVE-HF Investigators. Association of change in N-terminal pro-B-type natriuretic peptide following initiation of sacubitril-valsartan treatment with cardiac structure and function in patients with heart failure with reduced ejection fraction. *JAMA* 2019;**322**:1085–95.
 90. Fruhwald FM, Fahrleitner-Pammer A, Berger R, Leyva F, Freemantle N, Erdmann E, et al. Early and sustained effects of cardiac resynchronization therapy on N-terminal pro-B-type natriuretic peptide in patients with moderate to severe heart failure and cardiac dyssynchrony. *Eur Heart J* 2007;**28**:1592–7.
 91. Latini R, Masson S, Anand IS, Missov E, Carlson M, Vago T, et al.; Val-HeFT Investigators. Prognostic value of very low plasma concentrations of troponin T in patients with stable chronic heart failure. *Circulation* 2007;**116**:1242–9.
 92. Januzzi JL Jr, Filippatos G, Nieminen M, Gheorghiade M. Troponin elevation in patients with heart failure: on behalf of the Third Universal Definition Of Myocardial Infarction Global Task Force: heart failure section. *Eur Heart J*. 2012;**33**:2265–71.
 93. Passino C, Aimo A, Masotti S, Musetti V, Prontera C, Emdin M, et al. Cardiac troponins as biomarkers for cardiac disease. *Biomark Med* 2019;**13**:325–30.
 94. Aimo A, Januzzi JL Jr, Vergaro G, Ripoli A, Latini R, Masson S, et al. Prognostic value of high-sensitivity troponin T in chronic heart failure: an individual patient data meta-analysis. *Circulation* 2018;**137**:286–97.
 95. Wallenborn J, Marx A, Störk S, Güder G, Brenner S, Ertl G, et al. Prognostic significance of serial high-sensitivity troponin I measurements following acute cardiac decompensation-correlation with longer-term clinical outcomes and reverse remodelling. *Int J Cardiol* 2017;**232**:199–207.
 96. Motiwala SR, Gaggin HK, Gandhi PU, Belcher A, Weiner RB, Baggish AL, et al. Concentrations of highly sensitive cardiac troponin-I predict poor cardiovascular outcomes and adverse remodeling in chronic heart failure. *J Cardiovasc Transl Res* 2015;**8**:164–72.
 97. Gaggin HK, Szymonifka J, Bhardwaj A, Belcher A, De Berardinis B, Motiwala S, et al. Head-to-head comparison of serial soluble ST2, growth differentiation factor-15, and highly-sensitive troponin T measurements in patients with chronic heart failure. *JACC Heart Fail*. 2014;**2**:65–72.
 98. Pascual-Figal DA, Januzzi JL. The biology of ST2: the international ST2 consensus panel. *Am J Cardiol*. 2015;**115**:3b–7b.
 99. Aimo A, Januzzi JL Jr, Bayes-Genis A, Vergaro G, Sciarone P, Passino C, et al. Clinical and prognostic significance of sST2 in heart failure: JACC review topic of the week. *J Am Coll Cardiol* 2019;**74**:2193–203.
 100. Rehman SU, Mueller T, Januzzi JL Jr. Characteristics of the novel interleukin family biomarker ST2 in patients with acute heart failure. *J Am Coll Cardiol*. 2008;**52**:1458–65.
 101. Shah RV, Chen-Tournoux AA, Picard MH, van Kimmenade RR, Januzzi JL. Serum levels of the interleukin-1 receptor family member ST2, cardiac structure and function, and long-term mortality in patients with acute dyspnea. *Circ Heart Fail*. 2009;**2**:311–9.
 102. Gehlken C, Suthahar N, Meijers WC, de Boer RA. Galectin-3 in heart failure: an update of the last 3 years. *Heart Fail Clin*. 2018;**14**:75–92.
 103. Perea RJ, Morales-Ruiz M, Ortiz-Perez JT, Bosch X, Andreu D, Borrás R, et al. Utility of galectin-3 in predicting post-infarct remodeling after acute myocardial infarction based on extracellular volume fraction mapping. *Int J Cardiol* 2016;**223**:458–64.
 104. Meijers WC, van der Velde AR, Pascual-Figal DA, de Boer RA. Galectin-3 and post-myocardial infarction cardiac remodeling. *Eur J Pharmacol*. 2015;**763**:115–21.
 105. Lok DJ, Lok SI, Bruggink-André de la Porte PW, Badings E, Lipsic E, van Wijngaarden J, et al. Galectin-3 is an independent marker for ventricular remodeling and mortality in patients with chronic heart failure. *Clin Res Cardiol* 2013;**102**:103–10.
 106. Lin YH, Lin LY, Wu YW, Chien KL, Lee CM, Hsu RB, et al. The relationship between serum galectin-3 and serum markers of cardiac extracellular matrix turnover in heart failure patients. *Chin Chim Acta* 2009;**409**:96–9.
 107. Lopez-Andrés N, Rossignol P, Iraqi W, Fay R, Nuée J, Ghio S, et al. Association of galectin-3 and fibrosis markers with long-term cardiovascular outcomes in patients with heart failure, left ventricular dysfunction, and dyssynchrony: insights from the CARE-HF (Cardiac Resynchronization in Heart Failure) trial. *Eur J Heart Fail* 2012;**14**:74–81.
 108. Shah RV, Rong J, Larson MG, Yeri A, Ziegler O, Tanriverdi K, et al. Associations of circulating extracellular RNAs with myocardial remodeling and heart failure. *JAMA Cardiol* 2018;**3**:871–6.
 109. Viereck J, Thum T. Circulating noncoding RNAs as biomarkers of cardiovascular disease and injury. *Circ Res*. 2017;**120**:381–99.
 110. Ahmed SH, Clark LL, Pennington WR, Webb CS, Bonnema DD, Leonardi AH, et al. Matrix metalloproteinases/tissue inhibitors of metalloproteinases: relationship between changes in proteolytic determinants of matrix composition and structural, functional, and clinical manifestations of hypertensive heart disease. *Circulation* 2006;**113**:2089–96.
 111. Petretto E, Sarwar R, Grieve I, Lu H, Kumaran MK, Muckett PJ, et al. Integrated genomic approaches implicate osteoglycin (Ogn) in the regulation of left ventricular mass. *Nat Genet* 2008;**40**:546–52.
 112. Ibrahim NE, Rabideau DJ, Gaggin HK, Belcher AM, Conrad MJ, Jarolim P, et al. Circulating concentrations of orexin a predict left ventricular myocardial remodeling. *J Am Coll Cardiol* 2016;**68**:2238–40.
 113. Perez MV, Pavlovic A, Shang C, Wheeler MT, Miller CL, Liu J, et al. Systems genomics identifies a key role for hypocretin/orexin receptor-2 in human heart failure. *J Am Coll Cardiol* 2015;**66**:2522–33.
 114. Massoulié G, Sapin V, Ploux S, Rossignol P, Mulliez A, Jean F, et al. Low fibrosis biomarker levels predict cardiac resynchronization therapy response. *Sci Rep* 2019;**9**:6103.
 115. Swedberg K, Eneroth P, Kjekshus J, Snapinn S. Effects of enalapril and neuroendocrine activation on prognosis in severe congestive heart failure (follow-up of the CONSENSUS trial). CONSENSUS Trial Study Group. *Am J Cardiol*. 1990;**66**:40D–4D.
 116. Garg R, Yusuf S. Overview of randomized trials of angiotensin-converting enzyme inhibitors on mortality and morbidity in patients with heart failure. Collaborative Group on ACE Inhibitor Trials. *JAMA*. 1995;**273**:1450–6.
 117. Packer M, Poole-Wilson PA, Armstrong PW, Cleland JG, Horowitz JD, Massie BM, et al. Comparative effects of low and high doses of the angiotensin-converting enzyme inhibitor, lisinopril, on morbidity and mortality in chronic heart failure. ATLAS Study Group. *Circulation*. 1999;**100**:2312–8.
 118. Yusuf S, Pitt B, Davis CE, Hood WB, Cohn JN; SOLVD Investigators. Effect of enalapril on survival in patients with reduced left ventricular ejection fractions and congestive heart failure. *N Engl J Med*. 1991;**325**:293–302.
 119. Granger CB, McMurray JJ, Yusuf S, Held P, Michelson EL, Olofsson B, et al.; CHARM Investigators and Committees. Effects of candesartan in patients with chronic heart failure and reduced left-ventricular systolic function intolerant to angiotensin-converting-enzyme inhibitors: the CHARM-Alternative trial. *Lancet* 2003;**362**:772–6.
 120. Pitt B, Zannad F, Remme WJ, Cody R, Castaigne A, Perez A, et al. The effect of spironolactone on morbidity and mortality in patients with severe heart failure. Randomized Aldactone Evaluation Study Investigators. *N Engl J Med* 1999;**341**:709–17.
 121. Zannad F, McMurray JJ, Krum H, van Veldhuisen DJ, Swedberg K, Shi H, et al.; EMPHASIS-HF Study Group. Eplerenone in patients with systolic heart failure and mild symptoms. *N Engl J Med*. 2011;**364**:11–21.
 122. Effect of metoprolol CR/XL in chronic heart failure: Metoprolol CR/XL Randomised Intervention Trial in Congestive Heart Failure (MERIT-HF). *Lancet*. 1999;**353**:2001–7.
 123. Packer M, Bristow MR, Cohn JN, Colucci WS, Fowler MB, Gilbert EM, et al. The effect of carvedilol on morbidity and mortality in patients with chronic heart failure. U.S. Carvedilol Heart Failure Study Group. *N Engl J Med* 1996;**334**:1349–55.
 124. Packer M, Coats AJ, Fowler MB, Katus HA, Krum H, Mohacs P, et al.; Carvedilol Prospective Randomized Cumulative Survival Study Group. Effect of carvedilol on survival in severe chronic heart failure. *N Engl J Med*. 2001;**344**:1651–8.
 125. Packer M, Fowler MB, Roecker EB, Coats AJ, Katus HA, Krum H, et al.; Carvedilol Prospective Randomized Cumulative Survival (COPERNICUS) Study Group. Effect of carvedilol on the morbidity of patients with severe chronic heart failure: results of the Carvedilol Prospective Randomized Cumulative Survival (COPERNICUS) study. *Circulation* 2002;**106**:2194–9.
 126. Flather MD, Shibata MC, Coats AJ, Van Veldhuisen DJ, Parkhomenko A, Borbola J, et al. Randomized trial to determine the effect of nebivolol on mortality and cardiovascular hospital admission in elderly patients with heart failure (SENIORS). *Eur Heart J*. 2005;**26**:215–25.
 127. The Cardiac Insufficiency Bisoprolol Study II (CIBIS-II): a randomised trial. *Lancet*. 1999;**353**:9–13.
 128. St John Sutton M, Pfeffer MA, Moye L, Plappert T, Rouleau JL, Lamas G, et al. Cardiovascular death and left ventricular remodeling two years after myocardial infarction: baseline predictors and impact of long-term use of captopril: information from the Survival and Ventricular Enlargement (SAVE) trial. *Circulation*. 1997;**96**:3294–9.

129. Effects of enalapril on mortality in severe congestive heart failure. Results of the Cooperative North Scandinavian Enalapril Survival Study (CONSENSUS). *N Engl J Med*. 1987;**316**:1429–35.
130. Konstam MA, Rousseau MF, Kronenberg MW, Udelson JE, Melin J, Stewart D, et al. Effects of the angiotensin converting enzyme inhibitor enalapril on the long-term progression of left ventricular dysfunction in patients with heart failure. SOLVD Investigators. *Circulation* 1992;**86**:431–8.
131. Pouleur HG, Konstam MA, Udelson JE, Rousseau MF. Changes in ventricular volume, wall thickness and wall stress during progression of left ventricular dysfunction. The SOLVD Investigators. *J Am Coll Cardiol*. 1993;**22**:A43–8.
132. McKelvie RS, Rouleau JL, White M, Afzal R, Young JB, Maggioni AP, et al. Comparative impact of enalapril, candesartan or metoprolol alone or in combination on ventricular remodelling in patients with congestive heart failure. *Eur Heart J*. 2003;**24**:1727–34.
133. Colucci WS, Koliás TJ, Adams KF, Armstrong WF, Ghali JK, Gottlieb SS, et al.; REVERT Study Group. Metoprolol reverses left ventricular remodeling in patients with asymptomatic systolic dysfunction: the REversal of VEntricular remodeling with Toprol-XL (REVERT) trial. *Circulation* 2007;**116**:49–56.
134. Nauta JF, Hummel YM, Tromp J, Ouwerkerk W, van der Meer P, Jin X, et al. Concentric vs. eccentric remodelling in heart failure with reduced ejection fraction: clinical characteristics, pathophysiology and response to treatment. *Eur J Heart Fail* 2020;**22**:1147–55.
135. Cleland JGF, Ferreira JP, Mariottoni B, Pellicori P, Cuthbert J, Verdonschot JAJ, et al. The effect of spironolactone on cardiovascular function and markers of fibrosis in people at increased risk of developing heart failure: the Heart 'OMics' in AGEing (HOMAGE) randomized clinical trial. *Eur Heart J* 2021;**42**:684–96.
136. Shah AM, Claggett B, Sweitzer NK, Shah SJ, Deswal A, Anand IS, et al. Prognostic importance of changes in cardiac structure and function in heart failure with preserved ejection fraction and the impact of spironolactone. *Circ Heart Fail* 2015;**8**:1052–8.
137. Felker GM, Butler J, Ibrahim NE, Piña IL, Maisel A, Bapat D, et al.; PROVE-HF Investigators. Implantable cardioverter-defibrillator eligibility after initiation of sacubitril/valsartan in chronic heart failure: insights from PROVE-HF. *Circulation* 2021;**144**:180–2.
138. Desai AS, Solomon SD, Shah AM, Claggett BL, Fang JC, Izzo J, et al.; EVALUATE-HF Investigators. Effect of sacubitril-valsartan vs enalapril on aortic stiffness in patients with heart failure and reduced ejection fraction: a randomized clinical trial. *JAMA* 2019;**322**:1077–84.
139. Elefteriades J, Edwards R. Coronary bypass in left heart failure. *Semin Thorac Cardiovasc Surg*. 2002;**14**:125–32.
140. Adachi Y, Kiyosue A, Ando J, Kawahara T, Kodera S, Minatsuki S, et al. Factors associated with left ventricular reverse remodeling after percutaneous coronary intervention in patients with left ventricular systolic dysfunction. *Sci Rep* 2021;**11**:239.
141. Asch FM, Grayburn PA, Siegel RJ, Kar S, Lim DS, Zaroff JG, et al. Echocardiographic outcomes after transcatheter leaflet approximation in patients with secondary mitral regurgitation: the COAPT trial. *J Am Coll Cardiol* 2019;**74**:2969–79.
142. Stone GW, Lindenfeld J, Abraham WT, Kar S, Lim DS, Mishell JM, et al.; COAPT Investigators. Transcatheter mitral-valve repair in patients with heart failure. *N Engl J Med* 2018;**379**:2307–18.
143. Obadia JF, Messika-Zeitoun D, Leurent G, Lung B, Bonnet G, Piriou N, et al.; MITRA-FR Investigators. Percutaneous repair or medical treatment for secondary mitral regurgitation. *N Engl J Med* 2018;**379**:2297–306.
144. Toya T, Fukushima S, Shimahara Y, Kasahara S, Kobayashi J, Fujita T. Reverse left ventricular remodeling after aortic valve replacement for severe aortic insufficiency. *Interact Cardiovasc Thorac Surg*. 2021;**32**:846–54.
145. Koga-Ikuta A, Fukushima S, Kawamoto N, Saito T, Shimahara Y, Yajima S, et al. Reverse remodeling after aortic valve replacement for chronic aortic regurgitation. *Interact Cardiovasc Thorac Surg* 2021;**33**:10–8.
146. Vollema EM, Singh GK, Prihadi EA, Regeer MV, Ewe SH, Ng ACT, et al. Time course of left ventricular remodeling and mechanics after aortic valve surgery: aortic stenosis vs. aortic regurgitation. *Eur Heart J Cardiovasc Imaging* 2019;**20**:1105–11.
147. Harrington CM, Sorour N, Gottbrecht M, Nagy A, Kovell LC, Truong V, et al. Effect of transaortic valve intervention for aortic stenosis on myocardial mechanics. *Am J Cardiol* 2021;**146**:56–61.
148. Magalhaes MA, Koifman E, Torguson R, Minha S, Gai J, Kiramijyan S, et al. Outcome of left-sided cardiac remodeling in severe aortic stenosis patients undergoing transcatheter aortic valve implantation. *Am J Cardiol*. 2015;**116**:595–603.
149. Gastl M, Behm P, Haberkorn S, Holzbach L, Veulemans V, Jacoby C, et al. Role of T2 mapping in left ventricular reverse remodeling after TAVR. *Int J Cardiol* 2018;**266**:262–8.
150. Puls M, Beuthner BE, Topci R, Vogelgesang A, Bleckmann A, Sitte M, et al. Impact of myocardial fibrosis on left ventricular remodeling, recovery, and outcome after transcatheter aortic valve implantation in different haemodynamic subtypes of severe aortic stenosis. *Eur Heart J* 2020;**41**:1903–14.
151. Wong JA, Yee R, Stirrat J, Scholl D, Krahn AD, Gula LJ, et al. Influence of pacing site characteristics on response to cardiac resynchronization therapy. *Circ Cardiovasc Imaging* 2013;**6**:542–50.
152. Taylor RJ, Umar F, Panting JR, Stegemann B, Leyva F. Left ventricular lead position, mechanical activation, and myocardial scar in relation to left ventricular reverse remodeling and clinical outcomes after cardiac resynchronization therapy: a feature-tracking and contrast-enhanced cardiovascular magnetic resonance study. *Heart Rhythm*. 2016;**13**:481–9.
153. Vukajlovic D, Milasinovic G, Angelkov L, Ristic V, Tomovic M, Jurcevic R, et al. Contractile reserve assessed by dobutamine test identifies super-responders to cardiac resynchronization therapy. *Arch Med Sci* 2014;**10**:684–91.
154. McDonagh TA, Metra M, Adamo M, Gardner RS, Baumgartner H, Böhm M, et al. 2021 ESC Guidelines for the diagnosis and treatment of acute and chronic heart failure: developed by the task force for the diagnosis and treatment of acute and chronic heart failure of the European Society of Cardiology (ESC). With the special contribution of the Heart Failure Association (HFA) of the ESC. *Eur J Heart Fail*. 2022;**24**:4–131.