



Published in final edited form as:

J Pathol. 2015 June ; 236(2): 133–135. doi:10.1002/path.4526.

Feeding cancer's sweet tooth: specialized tumor vasculature shuttles glucose in Pancreatic ductal adenocarcinoma

Andrew C. Dudley^{1,2,3} and Victoria L. Bautch^{2,3,4}

¹Department of Cell Biology & Physiology, The University of North Carolina at Chapel Hill, Chapel Hill, NC 27599, USA

²Lineberger Comprehensive Cancer Center, Chapel Hill, NC 27599, USA

³McAllister Heart Institute, Chapel Hill, NC 27599, USA

⁴Department of Biology, The University of North Carolina at Chapel Hill, Chapel Hill, NC 27599, USA

Abstract

Pancreatic ductal adenocarcinoma (PDAC) is a highly lethal neoplasm characterized by a “fortress” of thick collagen fibers, abundant myofibroblasts and paradoxically reduced vascularization compared to normal pancreas. Despite these features, PDAC shows no reduction in the uptake of glucose that fuels tumor cell survival. In new work published in *The Journal of Pathology*, Hexige and colleagues have identified a novel adaptation of PDAC tumor endothelium; namely, “hairy-like” basal microvilli that increase the total vascular surface area and correlate with regions of highest glucose uptake. Since basal microvilli are not present on normal pancreatic blood vessels, their presence may add diagnostic value and blocking their function is a potential new treatment strategy for PDAC. This novel finding of basal microvilli on PDAC endothelium is a striking example of how phenotypic plasticity in tumor blood vessels contributes to tumor growth and progression, independent of conventional modes of angiogenesis.

Keywords

Tumor angiogenesis; tumor endothelial cells; endothelial heterogeneity; endothelial plasticity; tumor microenvironment; pancreatic cancer

Structural and functional abnormalities of tumor blood vessels

Morphological differences in the vascular endothelium between tissues and organs have been long-recognized. For example, fenestrated capillaries in the kidney and liver contrast with the continuous and tightly adjoined endothelium of the blood-brain-barrier. Some of

Correspondence: Dr. Andrew C. Dudley, Dept. of Cell Biology & Physiology, University of North Carolina at Chapel Hill, 3340C Medical Biomolecular Research Building, Chapel Hill, NC 27599, Tel: (919) 966-4419, Fax: (919) 966-6927, acdudley@med.unc.edu.

There are no conflicts of interest to disclose

Author contributions

ACD and VLB wrote and edited the manuscript.

these phenotypic characteristics are encoded during development, but most are transmitted by paracrine and juxtacrine-dependent signaling specific to the organ microenvironment [1,2]. In the “tumor organ”, the microenvironment is aberrant and characterized by nutrient deprivation, hypoxia, acidosis and chaotic blood flow [3]. This environment co-ordinates with well-characterized morphological and functional abnormalities in the tumor vasculature, including excessive sprouting, intercellular gaps and a defective endothelial cell barrier [4]. Microarray studies of freshly isolated tumor-derived endothelial cells from different tumor types show changes in expression of hundreds of genes and numerous cytogenetic and epigenetic anomalies [4,5]. It is presumed that many of these abnormalities in tumor blood vessels result from inappropriate signaling from tumor cells and other stromal cells in the tumor microenvironment.

Identification of “hairy-like” projections on PDAC tumor vessels

PDAC is a notoriously lethal cancer that is refractory to therapy [6]. A cardinal feature of PDAC is the accumulation of a dense “fortress” of desmoplastic stroma consisting of myofibroblasts, inflammatory cells and extracellular matrix which contributes to their “rock hard” texture and deficient vascularization [7]. Indeed, unlike other tumor types, angiogenesis inhibitors are virtually ineffective for the treatment of PDAC. Hypo-vascularization of PDAC may impair the delivery of chemotherapy such as gemcitabine, which has motivated treatment strategies that promote vascularization and improve drug perfusion by attacking the stromal cells (e.g. myofibroblasts) [8]. In the study by Hexige et al., the authors found fewer proliferating endothelial cells and sprouting tip cells in PDAC tumors compared to normal pancreas or liver tumors [9]. If PDAC tumors are poorly vascularized, how then do they acquire sufficient nutrients to support their growth? Using thick (45 μM) sections and 3D construction imaging, the authors noticed numerous “hairy-like” projections (0.8–1.2 μM in diameter and 3–41 μM in length) on the surface of PDAC micro vessels. After careful characterization of these structures using immunohistochemistry for markers typically used to identify cilia, the authors termed these structures “basal microvilli.” Remarkably, basal microvilli were only found in aggressive and metastatic PDAC tumors, but were not present in non-invasive precursor lesions or normal pancreas. Although sprouting tumor endothelial cells extend abluminal filopodia during tip cell specification, basal microvilli appear to be unique because they do not express VEGFR-2, the tip cell marker UNC5B, nor are they actively proliferating, as indicated by the absence of Ki67 staining.

Basal microvilli are CD34⁺ but do not express CD31/PECAM. They do not contain tubulin, but they do contain actin microfilaments that are linked to actin fibers within the cell body. Importantly, basal microvilli express clathrin and β -COP, two markers of transporter vesicles. Further analysis by TEM showed that basal microvilli also harbor pinocytic and exocytic vesicles as well as rough ER and mitochondria. These features led the authors to reason that these structures might be involved in the uptake of glucose, other nutrients, and/or aid in the clearance of waste products. Conventional ¹⁸F¹⁸FDG-PET was used to semi-quantitatively measure glucose uptake in PDAC tumors *in vivo*. In seven patients, tumors with the highest glucose uptake had longer and denser basal microvilli, while tumors with lower glucose uptakes had shorter and fewer basal microvilli. Notably, neoplastic cells

closely positioned to basal microvilli had lower GLUT-1 expression, presumably because the glucose concentration was highest, whereas the highest GLUT-1 expression was found in tumor cells more distant from the structures. Thus, basal microvilli may impart novel functions to the tumor endothelium directly, and they might also impact the growth and behavior of nearby tumor cells by distributing glucose. While correlative, these results indicate that basal microvilli may be a unique adaptation of the PDAC tumor vasculature that supports tumor growth independent of other well-characterized modes of tumor angiogenesis (figure 1).

Perspective

A lingering question is how and why basal microvilli form only in PDAC capillaries but not in normal pancreas or blood vessels of other tumor types. The distribution of cilia in the cardiovascular system may offer a clue. In other vascular beds, ciliated endothelium functions as a mechanosensor and is thought to mediate responses to shear stress. In good accord with this idea, the distribution of cilia in the cardiovascular system depends on the pattern of blood flow [10]. Interestingly, endothelial cell cilia have been linked to shear stress induced endothelial-to-mesenchymal transition, providing a functional relationship between cilia and flow-mediated changes in EC behavior [11]. Thus, there may be chaotic blood flow patterns or reperfusion injury in dysfunctional PDAC vessels that mediate the formation of basal microvilli, with an obvious difference being that cilia are positioned at the luminal vascular surface whereas basal microvilli are localized to the abluminal side.

Could basal microvilli therefore represent a novel adaptation of PDAC tumor vessels resulting from specific features of the PDAC tumor microenvironment? PDAC tumors are distinct in that vessels are sparse and the stroma is replete with collagen-producing myofibroblasts that distort and contract the extracellular matrix (ECM). These features alone might be sufficient to alter gene expression patterns in the underlying endothelial cells, which are intimately associated with and receive signals from the ECM. It would be interesting to characterize the gene expression signature of freshly isolated PDAC tumor endothelial cells, as has been done for other tumor types, to shed light into why PDAC vessels display their unique phenotype. Because the authors have also identified basal microvilli in the KPC (LSL-Kras^{G12D/+}; LSL-Trp^{53R172H/+}; Pdx1-Cre) murine model which closely mirrors human PDAC pathology, this should allow for deeper mechanistic or genomics-type studies that will provide insight into how basal microvilli are acquired [12]. Moreover, a murine model of PDAC that recapitulates human disease creates an exciting prospect for developing new therapeutic strategies that specifically target the basal microvilli.

Finally, exactly how glucose might be transferred from basal microvilli into the PDAC tumor microenvironment is uncertain. Although basal microvilli are tethered to GLUT-1 positive endothelium and contain GLUT-1⁺ vesicles, GLUT-1 typically transports glucose *inside* the cell from the external microenvironment, not the other way around. Glucose may exit basal microvilli via conventional mechanisms of nutrient transport, and the enhanced spatial uptake of glucose may be related to the increased surface area created by these structures. It is noted that the oncogenic KRas^{G12D} mutation itself, which is present in more

than 90% of PDAC patients, is known to reprogram tumor metabolism and stimulate ribose biogenesis [13]. Thus, both the cancer cells and the stroma, in this case specialized tumor vasculature, may join forces to shuttle and utilize glucose as a fuel for PDAC tumor growth.

Acknowledgments

ACD is supported by a grant from the National Institute of Health/NCI (RO1-CA177875), and VLB by grants from the NIH (R01HL-43174; HL116719). We thank Kristin Johnson for the excellent artwork.

References

1. Nolan DJ, Ginsberg M, Israely E, et al. Molecular signatures of tissue-specific microvascular endothelial cell heterogeneity in organ maintenance and regeneration. *Dev Cell*. 2013; 26:204–219. [PubMed: 23871589]
2. Aird WC. Phenotypic heterogeneity of the endothelium: I. Structure, function, and mechanisms. *Circ Res*. 2007; 100:158–173. [PubMed: 17272818]
3. Egeblad M, Nakasone ES, Werb Z. Tumors as organs: complex tissues that interface with the entire organism. *Dev Cell*. 2010; 18:884–901. [PubMed: 20627072]
4. Dudley AC. Tumor endothelial cells. *Cold Spring Harb Perspect Med*. 2012; 2:a006536. [PubMed: 22393533]
5. Aird WC. Molecular heterogeneity of tumor endothelium. *Cell Tissue Res*. 2009; 335:271–281. [PubMed: 18726119]
6. Hidalgo M. Pancreatic cancer. *N Engl J Med*. 2010; 362:1605–1617. [PubMed: 20427809]
7. Olson P, Hanahan D. Breaching the cancer fortress. *Science*. 2009; 324:1400–1401. [PubMed: 19520948]
8. Olive K, Jacobetz M, Davidson C, et al. Inhibition of Hedgehog signaling enhances delivery of chemotherapy in a mouse model of pancreatic cancer. *Science*. 2009; 324:1457–1461. [PubMed: 19460966]
9. Hexige S, Ardito-Abraham CM, Wu Y, et al. Identification of novel vascular projections with cellular trafficking abilities on the microvasculature of pancreatic ductal adenocarcinoma. *J Pathol*. 2015; 1002/path.4506
10. Egorova AD, van der Heiden K, Poelmann RE, Hierck BP. Primary cilia as biomechanical sensors in regulating endothelial function. *Differentiation*. 2012; 83:S56–S61. [PubMed: 22169885]
11. Egorova AD, Khedoe PPSJ, Goumans MJTH, Yoder BK, Nauli SM, Dijke ten P, et al. Lack of primary cilia primes shear-induced endothelial-to-mesenchymal transition. *Circ Res*. 2011; 108:1093–1101. [PubMed: 21393577]
12. Hingorani SR, Wang L, Multani AS, et al. Trp53R172H and KrasG12D cooperate to promote chromosomal instability and widely metastatic pancreatic ductal adenocarcinoma in mice. *Cancer Cell*. 2005; 7:469–483. [PubMed: 15894267]
13. Ying H, Kimmelman AC, Lyssiotis CA, et al. Oncogenic Kras maintains pancreatic tumors through regulation of anabolic glucose metabolism. *Cell*. 2012; 149:656–670. [PubMed: 22541435]

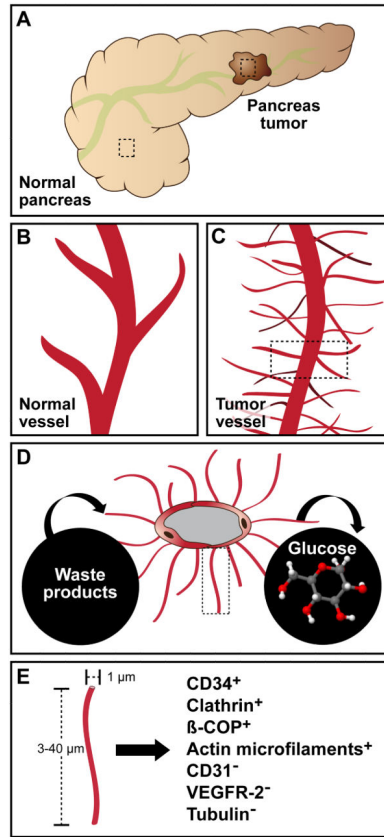


Figure 1.

Identification of basal microvilli in PDAC tumor vasculature. (A) Schematic showing regions of normal pancreas (boxed and zoomed in panel B) and pancreas tumor (boxed and zoomed in panel C). To identify basal microvilli, the authors used thick tissue sections and 3D construction imaging. Basal microvilli appear as “arborescent-like” projections extending from the abluminal endothelial cell surface. (D) Based on ^{18}F FDG-PET analysis, the authors conclude that basal microvilli act as a conduit for the transport of glucose to nearby tumor cells and may also facilitate the uptake and clearance of metabolic waste products. (E) Basal microvilli range $\sim 3\text{--}40\ \mu\text{m}$ in length and $\sim 1\ \mu\text{m}$ in diameter and express markers including CD34, clathrin, $\beta\text{-COP}$ and actin microfilaments but do not express CD31, VEGFR-2, or tubulin.