



Western Michigan University
ScholarWorks at WMU

Legacy Color Lithology Strip Logs

5-16-2022

MGRRE_LithStripLog_ROUEN, J. O. 1_21107021950000

MGRRE Western Michigan University

Follow this and additional works at: <https://scholarworks.wmich.edu/lith>



Part of the Geology Commons

WMU ScholarWorks Citation

Western Michigan University, MGRRE, "MGRRE_LithStripLog_ROUEN, J. O. 1_21107021950000" (2022).

Legacy Color Lithology Strip Logs. 530.

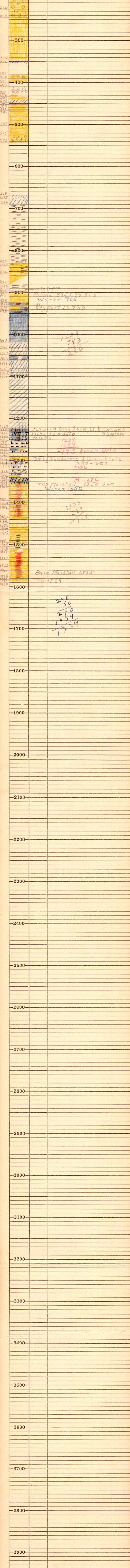
<https://scholarworks.wmich.edu/lith/530>

This Document is brought to you for free and open access by ScholarWorks at WMU. It has been accepted for inclusion in Legacy Color Lithology Strip Logs by an authorized administrator of ScholarWorks at WMU. For more information, please contact wmu-scholarworks@wmich.edu.



Permit # 2195

STATE Michigan		COMPANY Daily Crude Oil Co.	
COUNTY Mecosta		FARM Rowen	WELL NO. 1
T. 16N	R. 10W	COMMENCED 10-8-34	
24		COMPLETED 11-26-34	
REMARKS SW SE SW Sec. 24-16N-10W			
ELEV. 1053.8		Record = O.F. Poindexter From driller's Log + sample	
PRODUCTION D + F			



Casing
16" 460
10" 760
8 1/4" 1095

no sample
Parma 895? to 923
Water 705
Bayport LS 923

1229
943
286

1223-29 Gray Shale, LS, Brown dol
1229-LS + dol + gypsum
70253

1229
1084
-175 Brown Dol

Gray Sandstone + Gray Shale
1290-1300
-336

M-276
Top Marshall 1350 SLN
Water 1350

1353
1229
124

Base Marshall 1585
TD 1589

240
250
290
254
1454
1724