

# BMJ Open Perceptions of generic medicines and medication adherence after percutaneous coronary intervention: a prospective multicentre cohort study

Trond Røed Pettersen <sup>1,2</sup>, Jan Schjøtt,<sup>2,3</sup> Heather G Allore,<sup>4,5</sup> Bjørn Bendz,<sup>6,7</sup> Britt Borregaard <sup>8,9</sup>, Bengt Fridlund,<sup>1,10</sup> Alf Inge Larsen,<sup>2,11</sup> Jan Erik Nordrehaug,<sup>2</sup> Svein Rotevatn,<sup>1</sup> Tore Wentzel-Larsen,<sup>12,13</sup> Tone Merete Norekvål <sup>1,2</sup>

**To cite:** Pettersen TR, Schjøtt J, Allore HG, *et al*. Perceptions of generic medicines and medication adherence after percutaneous coronary intervention: a prospective multicentre cohort study. *BMJ Open* 2022;**12**:e061689. doi:10.1136/bmjopen-2022-061689

► Prepublication history and additional supplemental material for this paper are available online. To view these files, please visit the journal online (<http://dx.doi.org/10.1136/bmjopen-2022-061689>).

Received 02 February 2022  
Accepted 16 August 2022



© Author(s) (or their employer(s)) 2022. Re-use permitted under CC BY-NC. No commercial re-use. See rights and permissions. Published by BMJ.

For numbered affiliations see end of article.

## Correspondence to

Professor Tone Merete Norekvål; [tone.merete.norekval@helse-bergen.no](mailto:tone.merete.norekval@helse-bergen.no)

## ABSTRACT

**Objective** To determine patient perceptions of generic medicines 2 and 6 months after percutaneous coronary intervention (PCI), and to determine whether these perceptions moderate medication adherence.

**Design** Prospective multicentre cohort study with repeated measures of perceptions of generic medicines and medication adherence.

**Setting** The CONCARD<sup>PCI</sup> study conducted at seven large referral PCI centres in Norway and Denmark between June 2017 and May 2020.

**Participants** A total of 3417 adults (78% men), using both generic and brand name medicines, with a mean age of 66 years (SD 11) who underwent PCI were followed up 2 and 6 months after discharge from hospital.

**Main outcome measures** Perceptions of generic medicines were the main outcome. The secondary outcome was medication adherence.

**Results** Perceptions of generic medicines were significantly more negative at 2 than at 6 months (1.10, 95% CI 0.41 to 1.79,  $p=0.002$ ). Female sex ( $-4.21$ , 95% CI  $-6.75$  to  $-1.71$ ,  $p=0.001$ ), older age ( $-0.12$ , 95% CI  $-0.23$  to  $-0.02$ ,  $p=0.020$ ), lower education level (overall  $p<0.001$ ), ethnicity (overall  $p=0.002$ ), Norwegian nationality (10.27, 95% CI 8.19 to 12.40,  $p<0.001$ ) and reduced self-reported health status (0.19, 95% CI 0.09 to 0.41,  $p=0.003$ ) were significantly associated with negative perceptions of generic medicines. There was no evidence to suggest that perceptions of generic medicines moderate the association between sociodemographic and clinical variables and medication adherence ( $p\geq 0.077$  for all covariates). Moreover, self-reported medication adherence was high, with 99% scoring at or above the Medication Adherence Report Scale midpoint at both time points. There were no substantial correlations between negative perceptions of generic medicines and medication non-adherence at 2 months ( $r=0.041$ , 95% CI 0.002 to 0.081,  $p=0.037$ ) or 6 months ( $r=0.038$ , 95% CI  $-0.005$  to 0.081,  $p=0.057$ ).

**Conclusions** Mistrust and uncertainty about the safety and efficacy of generic medicines remains in a sizeable proportion of patients after PCI. This applies especially to those of lower socioeconomic status, older age, female sex, immigrants and those with poorer mental health. However, this study demonstrated a shift towards more

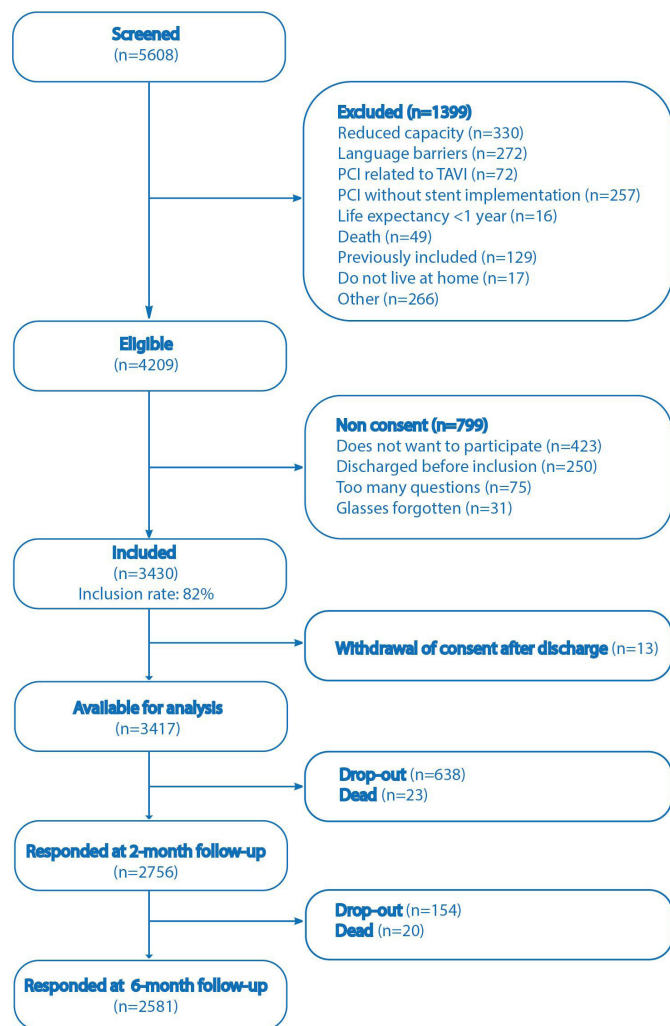
## STRENGTHS AND LIMITATIONS OF THIS STUDY

- ⇒ Large-scale prospective multicentre cohort study, based on real-world data, with a high inclusion rate (82%) and with serial measures of patient-reported outcomes.
- ⇒ Age and sex distribution in our study are comparable with data provided by national health registries for this patient population, strengthening generalisability of results.
- ⇒ As we assessed perceptions of generic medicines in general, and did not distinguish between different classes of medicines or therapeutic use, our results may not reflect all aspects of patients' perceptions of generic medicines.

positive perceptions of generic medicines in the longer term.

## INTRODUCTION

Generic medicines are bioequivalents to brand name medicines. Thus, they contain the same active substance(s) as brand name medicines, are used at the same dosage(s) to treat the same disease(s) and are used interchangeably once approved by the health authorities. Nevertheless, their inactive ingredients, name, appearance and packaging may differ from the brand name medicines.<sup>1</sup> Most studies have demonstrated evidence of the safety and efficacy of generic medicines.<sup>2–5</sup> However, a recent large-scale retrospective observational study found that generic losartan, valsartan and candesartan were associated with higher rates of adverse events (defined as any causes of emergency room consultations or hospitalisations) than brand name medicines.<sup>6</sup> Furthermore, some manufacturing issues have raised concerns about the quality and production of generic medicines.<sup>7</sup> In 2008, contaminated heparin caused



**Figure 1** Patient flow through the study. PCI, percutaneous coronary intervention.

serious adverse events in countries in the European Union, the USA and Asia, making quality an international issue.<sup>8</sup> However, as global spending on prescription medicines may exceed €1.3 trillion by 2023,<sup>9</sup> cost-containment measures, such as generic substitution, could play a part in reducing healthcare expenditure.<sup>10</sup> Moreover, generic substitution is among the most cost-effective interventions to implement when healthcare expenditure increases to unaffordable levels.<sup>11</sup>

Nonetheless, there is public scepticism about the safety and efficacy of generic medicines.<sup>12–15</sup> Further, acceptance of generic medicines is significantly higher in patients with transient conditions, such as headaches and fever, than in patients with chronic and more severe conditions, such as diabetes and hypertension.<sup>16</sup> This is concerning because negative perceptions of generic medicines can reduce medication adherence, and thereby the efficacy of the treatment.<sup>17–19</sup> The results are inconsistent, however.<sup>20</sup> Adherence to prescribed therapy, including dual antiplatelet therapy and other medicines used for secondary prevention of cardiovascular diseases, is of crucial importance to patients after

percutaneous coronary intervention (PCI) to improve the patient risk profile and avoid adverse events.<sup>21</sup> Nevertheless, regardless of whether generic or brand name medicines are prescribed, adherence rates to prescribed therapy are often suboptimal in patients with cardiovascular diseases.<sup>22–25</sup>

Mistrust in the efficacy, safety and quality of generic medicines remains a barrier that is essential to overcome if their utilisation is to be increased.<sup>26 27</sup> Previous studies have used either a cross-sectional survey design, focus groups or qualitative interview studies to investigate perceptions of generic medicines.<sup>12 13 17</sup> However, few longitudinal studies have been conducted to assess whether patients' perceptions change over time or to determine associations between perceptions and clinical characteristics. To address this gap in the literature, we determined perceptions of generic medicines in patients 2 and 6 months after PCI. Furthermore, we determined whether these perceptions moderate medication adherence.

## METHODS

### Study design and setting

CONCARD<sup>PCI</sup> is a prospective multicentre cohort study based on real-world data, including patients after PCI. Patient-reported outcomes were collected between June 2017 and May 2020 at seven large referral PCI centres in Norway and Denmark. On average, the centres perform 1700 (range 900 to >2000) PCI procedures annually, have 629 to 1400 beds (mean 943) and are referral centres for coronary angiography and PCI for 37 local hospitals.<sup>28</sup>

### STUDY POPULATION

The study population comprised all patients included in CONCARD<sup>PCI</sup>. To identify eligible patients, daily admission records and operating programmes were reviewed. In total, 5608 patients were screened for eligibility during index hospitalisation by trained CONCARD<sup>PCI</sup> study nurses based on the following inclusion criteria: patients undergoing PCI according to diagnostic criteria set out in the European Society of Cardiology revascularisation guidelines,<sup>21</sup> ≥ 18 years of age, and community-dwelling. Of these, 1399 patients were excluded based on the following exclusion criteria: (1) inability to speak Norwegian/Danish, (2) unable to fill in the questionnaires due to impaired capacity or needed a proxy to complete the questionnaires, (3) institutionalised, (4) life expectancy less than 1 year, (5) undergoing PCI without stent implantation, (6) PCI related to transcatheter aortic valve implantation or a MitraClip examination and (7) previously enrolled in CONCARD<sup>PCI</sup> (readmissions) (figure 1). If cognitive impairment was suspected in patients with no previous medical record of the problem, the Confusion Assessment Scale<sup>29</sup> and the 4AT<sup>30</sup> were used to determine whether patients should be excluded. Patients who were delirious or too clinically unstable to give informed

consent after PCI, and who would otherwise be eligible for inclusion, were reassessed before discharge. Non-participants were compared with participants on a limited number of variables from the Norwegian Registry on Invasive Cardiology to account for potential selection bias.

### SOCIODEMOGRAPHIC CHARACTERISTICS

Sociodemographic characteristics were obtained by self-reporting during index hospitalisation after PCI: sex, age, marital status (married or never married, and widow or widower), cohabitation status (living alone or with someone), ethnicity (categorised as native born, born to immigrant parents or immigrant), educational level (primary school, vocational school, upper secondary school, college or university <4 years, college or university  $\geq 4$  years), work status (full/part-time work, retired, sick leave full time/part time, disability pension, job seeker, student/initial compulsory military service, homemaker, unpaid leave) and total household gross income (denominated in EUR).

### CLINICAL CHARACTERISTICS

Disease-related outcomes were collected from patients' medical records and national quality registries. They included the number and class of discharge medications, clinical status on admission (blood pressure, heart rate and rhythm, body weight, height, waist and upper arm circumference), medical history including comorbidity (cardiovascular and medical) and previous hospital admissions for cardiovascular diseases, procedural and angiographic findings, complications during hospital stay, procedures additional to PCI and length of hospital stay. In addition, standard laboratory tests provided data on disease severity and comorbidities (full blood count, electrolytes, creatine, C reactive protein, glucose, cardiac troponin T/troponin I, total density lipoprotein, low-density lipoprotein and high-density lipoprotein cholesterol). All laboratory tests were analysed using standard hospital assays. Information about the use of healthcare services after discharge (consultation with a general practitioner, cardiologist, physiotherapist, psychologist or psychiatrist, admission to a hospital or private hospital, follow-up by community care nursing services, short-term stay at a nursing home, participation in cardiac rehabilitation programmes, or outpatient consultation) was obtained at the 2-month (T1) and 6-month follow-up (T2).

### Assessment of perceptions of generic medicines

We adapted four questions about perceptions of generic medicines from Kesselheim *et al.*<sup>31</sup> to strengthen the comparability of results. Patients were asked whether they perceived generic medicines being as effective, as safe, as producing the same side effects, and consisting of the same active ingredients as brand name medicines. All items were answered on a 5-point Likert response scale

(definitely yes=1, probably yes=2, unsure=3, probably not=4, definitely not=5). To avoid misunderstandings of the term generic medicines, patients were provided with a written explanation of the term in the questionnaire. For our study, the internal consistency of the scale was satisfactory at both T1 ( $\alpha=0.88$ ) and T2 ( $\alpha=0.89$ ).

### Assessment of medication adherence

The Medication Adherence Report Scale (MARS-5) is a five-item scale assessing intentional and unintentional, self-reported non-adherence to medicines in a non-threatening and non-judgemental way. Each item is scored on a Likert scale ranging from 1 (always) to 5 (never). The total score is scaled to range from 1 to 5, with higher scores indicating higher self-reported adherence. This implies that patients are categorised in terms of their position on the dynamic adherence continuum, rather than categorised as being 'adherent/non-adherent'. The instrument has shown good psychometric properties.<sup>32</sup> For our study, the internal consistency of the scale was satisfactory at both T1 ( $\alpha=0.85$ ) and T2 ( $\alpha=0.87$ ).

### Assessment of self-reported health status

The RAND-12 is a 12-item scale used to assess self-reported health status, to estimate the disease burden and evaluate disease-specific benchmarks compared with other populations. Furthermore, the scale corresponds to eight physical and mental health domains, which are summarised in a physical and mental component score. The instrument has shown good psychometric properties.<sup>33</sup> For this study, we used the two component scores as measures of self-reported health status.

### DATA COLLECTION

Data were collected from medical records, national quality registries and patient-reported outcome measures at baseline registration during index hospitalisation after PCI (T0). To ensure that extracted data were standardised, a comprehensive data dictionary and case report form (CRF) were used. For the Danish centres, electronic CRFs were used.

Vital status was identified before conducting the large-scale survey to avoid sending questionnaires to deceased patients or their families. Non-responders received one reminder. Postal or electronic questionnaires were distributed at T1 and T2. The time intervals were chosen to ensure that a sufficient amount of time had elapsed for prescription refills to be necessary.

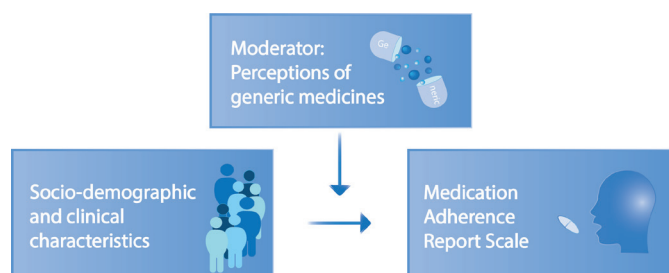
For the Norwegian centres, responses from the patient-reported outcome measures were entered manually in the statistical software platform by trained study nurses. For the Danish centres, patient-reported outcomes were collected either electronically via a questionnaire-based survey tool (SurveyXact V.12.9) or by postal questionnaires, as requested by the patient. Collected data were entered in the SurveyXact database by trained study

nurses before being transferred to the statistical software platform.

## STATISTICAL ANALYSIS

Descriptive statistics were used to depict patients' socio-demographic and clinical characteristics, perceptions of generic medicines and self-reported medication adherence. Means, SDs and ranges were calculated for continuous variables, and absolute numbers and percentages were used for categorical variables. Mean scores were computed for perceptions of generic medicines and medication adherence. In the event of missing data, the 'half rule' was applied, whereby scale scores were computed based on the means of valid items if at least half the items were valid.<sup>34</sup> Thus, patients were excluded from the scale scores if more than two items were missing from the questions on generic medicine, and if more than three items were missing from the questions on medication adherence.

Consistent with the coding scheme used by Kesselheim *et al.*,<sup>31</sup> we initially categorised patients who answered 'unsure', 'probably not' or 'definitely not' to any of the four questions about generic medicines as having negative perceptions of generic medicines compared with their brand name counterparts. However, for the linear regression analysis, the scale was converted to a 0–100 scale, with higher scores indicating more positive perceptions of generic medicines. Mixed effect models were used to compare the difference in perceptions of generic medicines at T1 and T2. Pearson's correlation was used to assess whether negative perceptions of generic medicines were correlated with low self-reported medication adherence. Bootstrap CIs were calculated using 10 000 replications. Linear regression analysis was performed at both time points to determine associations between socio-demographic and clinical characteristics as independent variables and perceptions of generic medicines as the dependent variable. Due to a strong ceiling effect and the skewness of the data on both scales, bootstrapping (5000 samples) was performed. To determine the potential moderation effect of perceptions of generic medicines on the association between sociodemographic and clinical variables (independent variables) and medication adherence (dependent variable), a moderator analysis was performed (figure 2). All the models included known and potential factors associated with negative perceptions



**Figure 2** Moderator analysis.

of generic medicines as covariates (sex, age, education, ethnicity, nationality, self-reported health status measured by the physical and mental components of RAND-12,<sup>33</sup> consultation with a general practitioner, comorbidities and polypharmacy ( $\geq 5$  medications)), together with perceptions of generic medicines and their interaction with these variables. In the moderation analysis, centring within the main range of the data of the values for the continuous variables was applied.

The following subgroup analyses were performed:  $\chi^2$  test was applied to determine if perceptions of generic medicines differed between participating countries. Logistic regression analysis was performed to investigate relationships of sex, age and indication for PCI with participation. Statistical significance was set at a  $p < 0.05$ . Analyses were conducted using SPSS V.26 (Released 2016. IBM SPSS Statistics for Windows, V.26), the R nlme package (V.3.1–152; Pinheiro *et al*) and the R boot package (V.1.3–27; Canty and Ripley).

## Patient and public involvement

Two patient representatives with a history of coronary artery disease (CAD), who had been trained as patient representatives in healthcare and research settings, were involved in setting the research question and outcome measures, as well as in the reporting of the results from the study. They were also asked to advise on the interpretation of results.

## RESULTS

### Population characteristics

At baseline, 4209 patients were eligible for inclusion. Of these, 3430 gave informed consent and were included in the study (inclusion rate 82%). Thirteen patients withdrew their consent after discharge from hospital. Thus, 3417 patients were available for analysis at baseline (figure 1). The majority were men (78%), with a mean age of 66 years (SD 11, range 20–96 years), native born (92%), married or living with a partner (75%) and retired (42%). Seventeen per cent were current smokers, 21% had previously suffered a myocardial infarction, 52% had hypertension and 47% had high cholesterol levels. Twenty-six per cent had previously undergone PCI and 9% had undergone coronary artery bypass grafting. Most admissions for PCI were due to acute coronary syndrome (62%), while 61% were currently using five or more medicines. Table 1 shows the baseline characteristics of patients.

### Perceptions of generic medicines at T1 and T2

At T1, generic medicines were perceived to be as effective (70%), as safe (68%), as producing the same side effects (64%), and containing the same active ingredients as brand name medicines (64%) (table 2). The percentage of patients who answered 'unsure', 'probably not' or 'definitely not' to any of the four questions and were categorised as having negative perceptions of generic medicines,

**Table 1** Baseline characteristics of patients undergoing percutaneous coronary intervention (N=3417)

Characteristics N (%)	
Sex	
Men	2673 (78)
Age, mean (SD)	
	66 (11)
Cohabitation status	
Married/cohabitating	2389 (75)
Separated/divorced	272 (9)
Widow/widower	263 (8)
Never married	262 (8)
Living alone	
	750 (24)
Ethnicity	
Native born	2829 (92)
Born of immigrant parents	114 (4)
Immigrant	135 (4)
Education	
Primary school	640 (20)
Vocational school	1375 (43)
Upper secondary school	298 (9)
University college or university, <4 years	488 (15)
University college or university, ≥4 years	380 (12)
Employment	
Full-time work	957 (28)
Part-time work	134 (4)
Retired	1422 (42)
Sick-leave (100% or partial)	41 (1)
Disability benefits	181 (5)
Total household gross income (in Euro)	
No information	370 (11)
≤15 000	68 (2)
15 000+ –22 000	255 (8)
22 000+ –33 000	449 (15)
33 000+ –44 000	425 (14)
44 000+ –60 000	507 (17)
66 000+ –77 000	448 (15)
77 000+ –93 000	307 (10)
>93 000	590 (19)
Smoking status	
Never smoker	943 (30)
Former smoker	1712 (54)
Current smoker	529 (17)
Indication for PCI	
Stable coronary artery disease	1020 (30)
Unstable angina pectoris	437 (13)
Non-ST-segment elevation myocardial infarction	912 (27)

Continued

**Table 1** Continued

Characteristics N (%)	
ST-segment elevation myocardial infarction	739 (22)
Other	295 (9)
Previous PCI	873 (26)
Previous CABG	312 (9)
Previous cardiovascular comorbidities	
Atrial fibrillation/flutter	406 (12)
Coronary artery disease	1156 (34)
Chronic heart failure	264 (8)
Hypercholesterolaemia	1569 (47)
Hypertension	1773 (52)
Myocardial infarction	699 (21)
Peripheral artery disease	205 (6)
Previous medical comorbidities	
Anxiety and depression	333 (10)
Cancer	395 (12)
Cerebrovascular disease	215 (6)
Chronic obstructive pulmonary disease	247 (7)
Chronic renal failure	156 (5)
Diabetes (type I or II)	701 (21)
Medications at discharge	
ACE-inhibitors	925 (27)
Anticoagulants	715 (21)
ARB-inhibitors	805 (24)
Acetylsalicylic acid	3285 (96)
Beta-blockers	1790 (53)
Calcium channel blockers	700 (21)
Clopidogrel	1596 (47)
Diuretics	613 (18)
Prasugrel	89 (3)
Statins	3151 (92)
Ticagrelor	1613 (47)
≥5 medications	2084 (61)

ACE-inhibitors, angiotensin-converting-enzyme inhibitors; ARB-inhibitors, angiotensin II receptor blockers; CABG, coronary artery bypass grafting; CAD, coronary artery disease; PCI, percutaneous coronary intervention; PCI, Previous CABG.

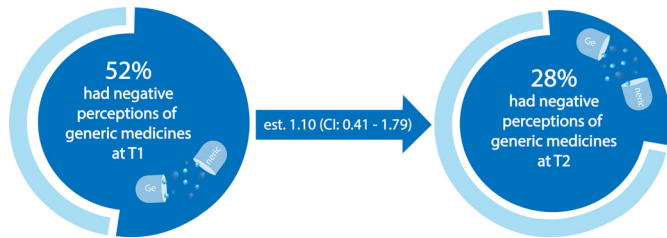
was 52% at T1 (figure 3). The percentage of patients who were categorised as having negative perceptions of generic medicines decreased to 28% at T2 (figure 3). At T2, 73% perceived generic medicines to be as effective, as safe (71%), as producing the same side effects (65%) and containing the same active ingredients as brand name medicines (66%) (table 2).

Mixed effect models showed a statistically significant shift towards more positive perceptions of generic


**Table 2** Perceptions of generic medicines at 2-month and 6-month follow-up

	T1 – 2 months after discharge from hospital					T2 – 6 months after discharge from hospital					Low trust in generic medicines* n (%)
	Definitely yes n (%)	Probably yes n (%)	Unsure n (%)	Probably not n (%)	Definitely not n (%)	Definitely yes n (%)	Probably yes n (%)	Unsure n (%)	Probably not n (%)	Definitely not n (%)	
All centres	752 (29)	1054 (41)	523 (20)	116 (5)	138 (5)	778 (31)	1049 (42)	467 (19)	89 (4)	132 (5)	688 (27)
Do you believe generic medicines to be as effective as brand name medicines?	707 (27)	1048 (41)	571 (22)	121 (5)	129 (5)	740 (30)	1042 (42)	501 (20)	99 (4)	126 (5)	726 (29)
Do you believe generic medicines to be as safe as brand name medicines?	589 (23)	1053 (41)	772 (30)	90 (4)	66 (3)	619 (25)	1013 (40)	710 (28)	94 (4)	71 (3)	878 (35)
Do you believe generic medicines to have the same side effects as brand name medicines?	571 (22)	1073 (42)	713 (28)	129 (5)	91 (4)	620 (25)	1022 (41)	654 (26)	114 (5)	96 (4)	867 (34)

\*Combined percentage of patients who answered 'Unsure', 'Probably not' or 'Definitely not'.



**Figure 3** Perceptions of generic medicines at 2-month and 6-month follow-up.

medicines from T1 to T2 ( $p=0.002$ ); however, the fixed effect estimate was low (1.10, 95% CI 0.41 to 1.79).

At T1, female sex ( $-3.94$ , 95% CI  $-6.39$  to  $-1.41$ ,  $p=0.002$ ), lower education level (overall  $p<0.001$ ), ethnicity (overall  $p=0.009$ ), Norwegian nationality (10.42, 95% CI 8.34 to 12.50,  $p<0.001$ ) and lower mental

component score on the RAND-12<sup>33</sup> (0.25, 95% CI 0.09 to 0.41,  $p=0.003$ ) were significantly associated with negative perceptions of generic medicines (table 3 and figure 4).

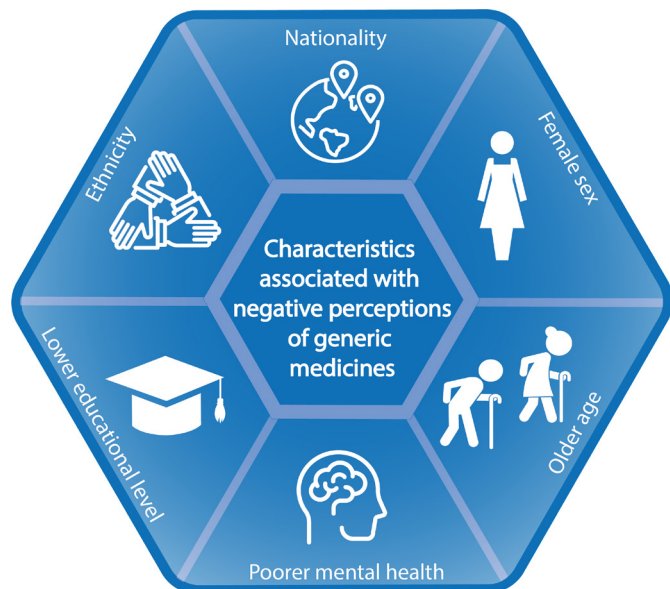
Statistically significant differences in perceptions of generic medicines were found between the two countries at both time points, with Danish patients having more positive perceptions of generic medicines than Norwegian patients (online supplemental table 1).

At T2, female sex ( $-4.21$ , 95% CI  $-6.75$  to  $-1.71$ ,  $p=0.001$ ), age ( $-0.12$ , 95% CI  $-0.23$  to  $-0.02$ ,  $p=0.020$ ), lower education level (overall  $p<0.001$ ), ethnicity (overall  $p=0.002$ ), Norwegian nationality (10.27, 95% CI 8.19 to 12.40,  $p<0.001$ ) and a lower mental component score on the RAND-12<sup>33</sup> (0.19, 95% CI 0.01 to 0.37,  $p=0.033$ ) were significantly associated with negative perceptions of generic medicines (table 4 and figure 4).

**Table 3** Association between sociodemographic and clinical characteristics and perceptions of generic medicines 2 months after discharge from hospital

	95% CI*			P value
	Coefficient	Lower	Upper	
Female sex	-3.94	-6.39	-1.41	0.002
Age	0.08	-0.02	0.18	0.131
Living alone	-2.26	-4.67	0.05	0.063
Education				<0.001†
Primary school	-9.8	-13.24	-6.32	<0.001
Vocational school	-8.39	-11.13	-5.59	0.001
Upper secondary school	-3.9	-7.5	-0.3	0.036
College/university <4 years	-4.57	-7.73	-1.53	0.004
versus college/university >4 years				
Ethnicity				0.009†
Immigrant	-4.89	-10.87	0.94	0.1
Born of immigrant parents	-6.56	-12.44	-0.94	0.019
versus native-born				
Norwegian nationality	10.42	8.34	12.5	<0.001
Comorbidities				0.619†
No comorbidities	0.61	-2.24	3.42	0.676
One comorbidity	1.62	-1.08	4.39	0.243
Two comorbidities	-0.47	-2.99	2.03	0.719
versus Three or more comorbidities				
Polypharmacy‡	1.45	-0.45	3.35	0.158
Consultation with general practitioner				0.180†
Before 4 weeks	-0.47	-2.8	1.75	0.681
Within 4–8 weeks	-2.35	-4.91	0.19	0.08
versus no consultation				
Self-reported health status				
Physical component score RAND-12	-0.04	-0.219	0.14	0.67
Mental component score RAND-12	0.25	0.09	0.41	0.003

\*Bootstrap results are based on 5000 bootstrap samples.  
 †Overall p values for education, ethnicity, comorbidities and consultation with general practitioner.  
 ‡Currently using five or more medications.



**Figure 4** Characteristics associated with negative perceptions of generic medicines.

In the moderation analysis, polypharmacy was a potential moderator of the association between sociodemographic and clinical variables and medication adherence. However, the interaction was not statistically significant ( $p=0.077$ ). No significant interactions were found for age, sex, living alone, level of education, ethnicity, nationality, comorbidities, consultation with general practitioner or self-reported health status ( $p\geq 0.11$ ).

#### Medication adherence at T1 and T2

The mean MARS-5 total score was 4.83 (SD 0.41) at T1. In addition, more than 99% scored at or above the MARS-5 midpoint, indicating high levels of self-reported medication adherence. No significant difference was found in self-reported medication adherence between the measuring time points, as the mean total score for MARS-5 was 4.78 (SD 0.50) and 99% scored at or above the MARS-5 midpoint at T2 (table 5).

There were no substantial correlations between negative perceptions of generic medicines and low self-reported medication adherence at T1 ( $r=0.041$ , 95% CI 0.002 to 0.081,  $p=0.037$ ) or T2 ( $r=0.038$ , 95% CI  $-0.005$  to 0.081,  $p=0.057$ ).

#### DISCUSSION

In this prospective multicentre cohort study of patients after PCI, a sizeable proportion of the patients had negative perceptions of generic medicines or were uncertain about the safety and efficacy of generic medicines. Significant improvement in perceptions of generic medicines were found between T1 and T2; however, the estimated improvement was low. Female sex, older age, lower education level, ethnicity, Norwegian nationality, and poorer mental health were significantly associated with negative perceptions of generic medicines. There was no

evidence to suggest that perceptions of generic medicines moderate the association between sociodemographic and clinical characteristics and medication adherence. The overall self-reported medication adherence was high at both time points. However, the negative perceptions of generic medicines were not significantly correlated with low self-reported medication adherence.

A sizeable proportion of the patients in our study had negative perceptions of generic medicines. Global spending on prescription medicines is steadily increasing, largely driven by the high cost of brand name medicines, market exclusivity and monopoly rights, and it has become a major concern for patients, prescribers and policy-makers.<sup>35</sup> Thus, this lingering mistrust in generic medicines is concerning and important for policy-makers to consider as healthcare expenditure increases to unaffordable levels. A possible explanation for the persisting negative perceptions of generic medicines might be the set-up of the healthcare systems in the participating countries. All the Nordic countries have a tax-supported healthcare system founded on the principle of universal access to both hospital-based and primary healthcare services, which secures access to medicines regardless of the patients' financial situation.<sup>36</sup> For medicines that are available for reimbursement (by the hospital or national insurance scheme), the pharmacies are obliged at all times to have at least one of the cheapest generic medicines available in both Norway and Denmark. Furthermore, they are obliged to offer the cheapest generic competitor to the patients, if the physician has not opposed to such substitution for any (medical) reason, and to inform them about the safety and efficacy of generic medicines. The premise for generic substitution is that the medicines have been considered interchangeable in terms of bioequivalence and therapeutic equivalence by the countries' medicines agencies. Which medicines that should be considered interchangeable are regularly evaluated, and the list of interchangeable medicines are updated monthly. The rationale behind the introduction of generic substitution was primarily cost containment, since a sizeable proportion of the patients' pharmaceutical expenditure is covered by the government in the Nordic countries. This is unlike the USA, where private healthcare insurance is the predominant source of healthcare coverage, and, as a result, 9 out of 10 prescriptions filled are for generic medicines.<sup>37</sup> Universal healthcare, combined with a high standard of living, means that switching to a generic medicine leads to no or small personal savings.<sup>38</sup> Thus, patients may need stronger financial incentives to increase their acceptance and use of generic medicines. Furthermore, a recent systematic literature review<sup>27</sup> found that a lack of communication between patients and healthcare professionals contributed negatively to perceptions and the utilisation of generic medicines. Although we did not investigate the extent to which patients were informed about the possibility of generic substitution, these results are consistent with findings from our recent qualitative interview



**Table 4** Association between sociodemographic and clinical characteristics and perceptions of generic medicines 6 months after discharge from hospital

	95% CI*			P value
	Coefficient	Lower	Upper	
Female sex	-4.21	-6.75	-1.71	0.001
Age	-0.12	-0.23	-0.02	0.02
Living alone	-1.7	-4.15	0.77	0.186
Education				<0.001†
Primary school	-9.13	-12.64	-5.63	<0.001
Vocational school	-7.23	-9.96	-4.45	<0.001
Upper secondary school	-5.15	-8.85	-1.56	0.008
College/university <4 years versus college/university >4 years	-1.83	-4.72	1.03	0.239
Ethnicity				0.002†
Immigrant	-7.33	-13.1	-1.8	<0.001
Born of immigrant parents versus native-born	-6.54	-12.98	-0.59	0.028
Norwegian nationality	10.27	8.19	12.4	<0.001
Comorbidities				0.222†
No comorbidities	1.77	-1.15	4.45	0.236
One comorbidity	2.98	0.28	5.67	0.033
Two comorbidities	1.21	-1.38	3.76	0.372
Three or more comorbidities				
Polypharmacy‡	1.85	-0.15	3.91	0.071
Consultation with general practitioner				0.030†
Before 4 weeks	-2.02	-4.44	0.5	0.09
Within 4–8 weeks	-3.73	-6.43	-1.07	0.008
Versus no consultation				
Self-reported health status				
Physical component score RAND-12	-0.01	-0.18	0.18	0.937
Mental component score RAND-12 <sup>34</sup>	0.19	0.01	0.37	0.033

\*Bootstrap results are based on 5000 bootstrap samples.  
 †Overall p values for education, ethnicity, comorbidities and consultation with general practitioner.  
 ‡Currently using five or more medications.

study.<sup>18</sup> As patients' knowledge is a prerequisite for acceptance and use of generic medicines, physicians should be encouraged to inform patients about the possibility of generic substitution before discharge from hospital in order to avoid confusion, misunderstandings and subsequent negative perceptions of generic medicines when they are offered generic substitutes by pharmacies.<sup>39</sup>

Our finding that perceptions of generic medicines are associated with sociodemographic characteristics such as sex, age, socioeconomic status and ethnicity is in line with previous studies in other patient populations.<sup>12 16 27</sup> Surprisingly, significant differences in perceptions were found between the two countries despite comparable healthcare systems. This could be explained by a historic difference as regards generic substitution, which is reflected in a lower prescription rate for generic medicines

in Norway (54%) than in Denmark (67%).<sup>40 41</sup> Generic substitution was first allowed in Denmark in the early 1990s. However, in 1997, the legislation was amended and pharmacists were expected to offer generic substitution unless the prescribing physician was explicitly opposed to this. In Norway, generic substitution was not introduced until 2001.

In our study, a lower mental component score, reflecting poorer mental health, was significantly associated with negative perceptions of generic medicines. This is an important finding since poorer mental health is common among patients with CAD and is significantly associated with low self-reported medication adherence.<sup>42</sup> Moreover, poorer mental health has not been reported to be significantly associated with negative perceptions of generic medicines in previous systematic reviews.<sup>12 13 16 27</sup>



**Table 5** Responses to the medication adherence report scale at 2-month and 6-month follow-up

	T1—2 months after discharge from hospital					T2—6 months after discharge from hospital				
	Always n (%)	Often n (%)	Sometimes n (%)	Rarely n (%)	Never n (%)	Always n (%)	Often n (%)	Sometimes n (%)	Rarely n (%)	Never n (%)
Forget to take medications	22 (1)	5 (0.2)	94 (4)	895 (35)	1571 (61)	37 (2)	14 (1)	109 (4)	980 (39)	1375 (55)
Modify doses	21 (1)	6 (0.2)	47 (2)	126 (5)	2365 (92)	34 (1)	6 (0.2)	60 (2)	131 (5)	2266 (91)
Stop taking medications during a certain period	18 (1)	4 (0.2)	25 (1)	71 (3)	2445 (95)	35 (1)	4 (0.2)	37 (2)	75 (3)	2338 (94)
Decide to miss a dose	17 (1)	4 (0.2)	25 (1)	96 (4)	2420 (95)	31 (1)	4 (0.2)	53 (2)	96 (4)	2310 (93)
Take less than what is prescribed	29 (1)	11 (0.4)	26 (1)	87 (3)	2416 (94)	40 (2)	7 (0.3)	34 (1)	86 (3)	2326 (93)
Mean total score MARS-5 (SD)	4.83 (0.41)									
MARS-5, Medication Adherence Report Scale.										

Thus, this important finding seems to be underinvestigated and is an area for future research.

Contrary to our hypothesis, clinical characteristics were not significantly associated with perceptions of generic medicines. A recent study investigating physician-related factors associated with opposing generic substitution for 18 distinct therapeutic classes (including antiplatelet agents, lipid-lowering agents, ACE inhibitors, angiotensin II receptor blockers and beta blockers) found that patients' clinical characteristics, such as comorbidity and polypharmacy, negatively influenced prescription rates for generic medicines.<sup>43</sup> Thus, comorbidity may be an influencing factor in the physician's decision not to allow generic substitution. However, results are inconclusive, warranting further research.

Unlike previous studies where adherence to secondary preventive medicines have been found to be poor in patients after PCI,<sup>44 45</sup> the overall self-reported medication adherence in our study was high at both time points, with more than 99% scoring at or above the MARS-5<sup>32</sup> midpoint. Furthermore, perceptions of generic medicines were not significantly correlated with low self-reported medication adherence and did not significantly moderate the association between sociodemographic and clinical variables and medication adherence. Studies investigating the impact of generic medicines on medication adherence have produced conflicting results. A recent large-scale study to determine the effect of generic substitution on persistence and medication adherence found that patients' medication adherence decreased with an increase in generic substitution.<sup>46</sup> Furthermore, a cross-sectional study found that generic substitution complicated medication adherence.<sup>17</sup> This is in contrast to a large retrospective study analysing healthcare claims from 45 large employers, which found that prescribing generic medicines was associated with improved medication adherence.<sup>47</sup> In addition, a large-scale retrospective cohort study analysing claims data for ambulatory prescriptions of ramipril, found that physician-induced generic substitution did not affect prescription refill adherence.<sup>48</sup>

The perfect method to measure medication adherence does not exist as all methods have their advantages and disadvantages. In our study, medication adherence was assessed by self-report. Although self-reported measures may overestimate medication adherence compared with objective measures, patient-reported outcomes are found to be powerful tools valued by patients, clinicians and policy-makers.<sup>49</sup> Thus, results from our cohort study add important results to the existing literature on medication adherence and generic substitution.

### Strengths and limitations

Our study has several strengths. It was a large-scale (N=3417) prospective multicentre cohort study, based on real-world data, with a high inclusion rate (82%) and with serial measures of patient-reported outcomes. In addition, we achieved a high response rate of 81% and 76% at T1

and T2, respectively. Age and sex distribution in our study are comparable with data provided by the Norwegian Registry of Invasive Cardiology<sup>50</sup> and the Danish Heart Registry<sup>51</sup> for this patient population, strengthening the generalisability of results. Finally, patient representatives were involved in setting the research question and outcome measures. Furthermore, they provided invaluable input to the development of the CRF, including the choice of self-report questionnaires, thereby ensuring the relevance of the questionnaire.

Despite these strengths, our study is not without limitations. First, as language barriers were an exclusion criterion, our results may not be extrapolated to all segments of the target population. Most Western countries advocate the use of generic medicines and impose strict control on their pharmaceutical markets regarding the quality of generic medicines. However, many low-income and middle-income countries struggle with an insufficient regulatory system for their pharmaceutical markets and lack bioequivalence testing facilities.<sup>52</sup> Furthermore, studies have shown that physicians in low- and middle-income countries tend to have mixed perceptions of generic medicines.<sup>53</sup> Thus, immigrants from low-income and middle-income countries may also have different perceptions of generic medicines compared with the population at large. Second, we assessed perceptions of generic medicines in general, and did not distinguish between different classes of medicines or therapeutic use (eg, transient vs severe conditions). As patients tend to be more susceptible to using generic medicines for what they perceive to be mild conditions compared with severe conditions,<sup>16</sup> our results may not reflect all aspects of patients' perceptions of generic medicines. Thirdly, Norwegian patients who declined to participate in the study were older and more often had other indications for PCI compared with participants (online supplemental table 2). However, the propensity to complete the questionnaire at T1 and T2 increased with age for those remaining in the study (online supplemental tables 3 and 4). Fourth, we categorised those answering 'unsure' as having negative perceptions of generic medicines. Fifth, despite being validated for patients with chronic conditions, we found that 99% scored at or above the MARS-5<sup>32</sup> midpoint. This indicates that the use of both generic and disease-specific instruments are needed to obtain a correct picture of patients' medication adherence after PCI. In addition, the skewed distribution of the instrument may have affected the results of the moderation analysis as a higher number of non-adherent patients would be needed to adequately test the hypothesis. However, given the large study sample, this limitation is reduced. Finally, due to legislation in the Nordic countries in question, patients can freely choose to use generic or brand name medicines regardless of what is prescribed. Thus, the only way to collect data on whether patients filled their prescription for generic or brand name medicines is through prescription registries. However, due to restructuring of the Norwegian Prescription Database, these

data are currently not available. Thus, we were unable to compare clinical outcomes or investigate correlations between perceptions of generic medicines and clinical outcomes between those using generic medicines and those using brand name medicines.

## CONCLUSION

Mistrust and uncertainty about the safety and efficacy of generic medicines remains in a sizeable proportion of patients after PCI. This applies especially to those of lower socioeconomic status, older age, female sex, immigrants and those with poorer mental health. However, this study demonstrates a shift towards more positive perceptions of generic medicines in the longer term.

### Author affiliations

<sup>1</sup>Department of Heart Disease, Haukeland University Hospital, Bergen, Norway

<sup>2</sup>Department of Clinical Science, University of Bergen Faculty of Medicine and Dentistry, Bergen, Norway

<sup>3</sup>Department of Medical Biochemistry and Pharmacology, Haukeland University Hospital, Bergen, Norway

<sup>4</sup>Department of Internal Medicine, Yale School of Medicine, New Haven, Connecticut, USA

<sup>5</sup>Department of Biostatistics, Yale University School of Public Health, New Haven, Connecticut, USA

<sup>6</sup>Department of Cardiology, Oslo University Hospital, Oslo, Norway

<sup>7</sup>Institute of Clinical Medicine, University of Oslo Faculty of Medicine, Oslo, Oslo, Norway

<sup>8</sup>Department of Cardiothoracic and Vascular Surgery, Odense Universitetshospital, Odense, Denmark

<sup>9</sup>Department of Clinical Research, University of Southern Denmark, Odense, Denmark

<sup>10</sup>Centre of Interprofessional Collaboration within Emergency Care (CICE), Linnaeus University, Kalmar, Sweden

<sup>11</sup>Department of Cardiology, Stavanger University Hospital, Stavanger, Norway

<sup>12</sup>Centre for Clinical Research, Haukeland University Hospital, Bergen, Norway

<sup>13</sup>Centre for Child and Adolescent Mental Health Eastern and Southern Norway, Oslo, Norway

**Twitter** Trond Røed Pettersen @EdTrond, Britt Borregaard @BorregaardBritt and Tone Merete Norekvål @TNorekval

**Acknowledgements** The authors thank all participating centres for supporting this project and for their considerable in-house contributions. Furthermore, we are grateful for the assistance provided by Marie Hayes for the development of the figures.

**Contributors** TMN, TRP and JS contributed to the study design. HGA is chairing the Scientific Advisory Board in CONCARDPCI, and provided advice on the study design and statistical analyses. TW-L and TRP analysed and interpreted the data. TRP wrote the first draft of the paper. TRP, JS, HGA, BBe, BBo, BF, ALL, JEN, SR, TW-L and TMN revised the manuscript critically, and read and approved the final draft. The corresponding author attests that all listed authors meet authorship criteria and no others meeting the criteria have been omitted. TMN is the guarantor of this study.

**Funding** The CONCARDPCI study is financed through a major research grant from the Western Norway Health Authority (no 912184). In addition, TRP is financed through a PhD-fellowship from the Western Norway Health Authority (no 912295). We acknowledge the in-house contributions of all the cohort study centres.

**Disclaimer** The funders had no role in the study design; in the collection, analysis, and interpretation of data; in the writing of the report; or in the decision to submit the article for publication.

**Competing interests** None declared.

**Patient and public involvement** Patients and/or the public were involved in the design, or conduct, or reporting, or dissemination plans of this research. Refer to the Methods section for further details.

**Patient consent for publication** Not applicable.

**Ethics approval** This study involves human participants and was approved by the Norwegian Regional Committee for Ethics in Medical Research in Western Norway (REK 2015/57), and the Data Protection Agency in the Zealand region for the Danish centres (REG-145-2017). Participants gave informed consent to participate in the study before taking part.

**Provenance and peer review** Not commissioned; externally peer reviewed.

**Data availability statement** No data are available.

**Supplemental material** This content has been supplied by the author(s). It has not been vetted by BMJ Publishing Group Limited (BMJ) and may not have been peer-reviewed. Any opinions or recommendations discussed are solely those of the author(s) and are not endorsed by BMJ. BMJ disclaims all liability and responsibility arising from any reliance placed on the content. Where the content includes any translated material, BMJ does not warrant the accuracy and reliability of the translations (including but not limited to local regulations, clinical guidelines, terminology, drug names and drug dosages), and is not responsible for any error and/or omissions arising from translation and adaptation or otherwise.

**Open access** This is an open access article distributed in accordance with the Creative Commons Attribution Non Commercial (CC BY-NC 4.0) license, which permits others to distribute, remix, adapt, build upon this work non-commercially, and license their derivative works on different terms, provided the original work is properly cited, appropriate credit is given, any changes made indicated, and the use is non-commercial. See: <http://creativecommons.org/licenses/by-nc/4.0/>.

#### ORCID iDs

Trond Røed Pettersen <http://orcid.org/0000-0002-3757-4847>

Britt Borregaard <http://orcid.org/0000-0003-2702-0231>

Tone Merete Norekvål <http://orcid.org/0000-0003-3640-2119>

#### REFERENCES

- The European medicines Agency. generic and hybrid medicines, December 2012. Available: <https://www.ema.europa.eu/en/human-regulatory/marketing-authorisation/generic-hybrid-medicines>
- Jackevicius CA, Tu JV, Krumholz HM, et al. Comparative effectiveness of generic atorvastatin and Lipitor® in patients hospitalized with an acute coronary syndrome. *J Am Heart Assoc* 2016;5:e003350.
- Ko DT, Krumholz HM, Tu JV, et al. Clinical outcomes of Plavix and generic clopidogrel for patients hospitalized with an acute coronary syndrome. *Circ Cardiovasc Qual Outcomes* 2018;11:e004194.
- Tian Y, Reichardt B, Dunkler D, et al. Comparative effectiveness of branded vs. generic versions of antihypertensive, lipid-lowering and hypoglycemic substances: a population-wide cohort study. *Sci Rep* 2020;10:5964.
- Manzoli L, Flacco ME, Boccia S, et al. Generic versus brand-name drugs used in cardiovascular diseases. *Eur J Epidemiol* 2016;31:351–68.
- Leclerc J, Blais C, Rochette L, et al. Impact of the Commercialization of three generic angiotensin II receptor blockers on adverse events in Quebec, Canada: a population-based time series analysis. *Circ Cardiovasc Qual Outcomes* 2017;10:e003891.
- Eban K, Medicine D, May FM, 2013. Available: <https://fortune.com/2013/05/15/dirty-medicine/>
- Liu H, Zhang Z, Linhardt RJ. Lessons learned from the contamination of heparin. *Nat Prod Rep* 2009;26:313–21.
- The IQVIA Institute. The global use of medicine in 2019 and outlook to 2023, 2019. Available: <https://www.iqvia.com/insights/the-iqvia-institute/reports/the-global-use-of-medicine-in-2019-and-outlook-to-2023>
- Vincent Rajkumar S, Rajkumar SV. The high cost of prescription drugs: causes and solutions. *Blood Cancer J* 2020;10:71.
- Wouters OJ, Kanavos PG, McKEE M. Comparing generic drug markets in Europe and the United States: prices, volumes, and spending. *Milbank Q* 2017;95:554–601.
- Colgan S, Faasse K, Martin LR, et al. Perceptions of generic medication in the general population, doctors and pharmacists: a systematic review. *BMJ Open* 2015;5:e008915.
- Dunne SS. What do users of generic medicines think of them? A systematic review of consumers' and patients' perceptions of, and experiences with, generic medicines. *Patient* 2016;9:499–510.
- MacKrell K, Petrie KJ. What is associated with increased side effects and lower perceived efficacy following switching to a generic medicine? a new Zealand cross-sectional patient survey. *BMJ Open* 2018;8:e023667.
- Kesselheim AS, Misono AS, Lee JL, et al. Clinical equivalence of generic and brand-name drugs used in cardiovascular disease: a systematic review and meta-analysis. *JAMA* 2008;300:2514–26.
- Dunne SS, Dunne CP. What do people really think of generic medicines? A systematic review and critical appraisal of literature on stakeholder perceptions of generic drugs. *BMC Med* 2015;13:173.
- Olsson E, Svensberg K, Wallach-Kildemoes H. Swedish patients' trust in the bioequivalence of interchangeable generics. *What factors are important for low trust? Pharm Pract* 2018;16:1298.
- Pettersen TR, Fridlund B, Bendz B, et al. Challenges adhering to a medication regimen following first-time percutaneous coronary intervention: a patient perspective. *Int J Nurs Stud* 2018;88:16–24.
- Goldszmidt RB, Buttendorf AR, Schuldt Filho G, et al. The impact of generic labels on the consumption of and adherence to medication: a randomized controlled trial. *Eur J Public Health* 2019;29:12–17.
- Corrao G, Soranna D, La Vecchia C, et al. Medication persistence and the use of generic and brand-name blood pressure-lowering agents. *J Hypertens* 2014;32:1146–53.
- Neumann F-J, Sousa-Uva M, Ahlsson A, et al. 2018 ESC/EACTS guidelines on myocardial revascularization. *Eur Heart J* 2019;40:87–165.
- Chen H-Y, Saczynski JS, Lapane KL, et al. Adherence to evidence-based secondary prevention pharmacotherapy in patients after an acute coronary syndrome: a systematic review. *Heart Lung* 2015;44:299–308.
- Mathews R, Wang W, Kaltenbach LA, et al. Hospital variation in adherence rates to secondary prevention medications and the implications on quality. *Circulation* 2018;137:2128–38.
- Zanchin T, Temperli F, Karagiannis A, et al. Frequency, reasons, and impact of premature ticagrelor discontinuation in patients undergoing coronary revascularization in routine clinical practice: results from the Bern percutaneous coronary intervention registry. *Circ Cardiovasc Interv* 2018;11:e006132. May.
- Khatib R, Marshall K, Silcock J, et al. Adherence to coronary artery disease secondary prevention medicines: exploring modifiable barriers. *Open Heart* 2019;6:e000997.
- Ferrario A, Dedet G, Humbert T, et al. Strategies to achieve fairer prices for generic and biosimilar medicines. *BMJ* 2020;368:l5444.
- Howard JN, Harris I, Frank G, et al. Influencers of generic drug utilization: a systematic review. *Res Social Adm Pharm* 2018;14:619–27.
- Norekvål TM, Allore HG, Bendz B, et al. Rethinking rehabilitation after percutaneous coronary intervention: a protocol of a multicentre cohort study on continuity of care, health literacy, adherence and costs at all care levels (the CONCARD<sup>PC</sup>). *BMJ Open* 2020;10:e031995.
- Inouye SK, van Dyck CH, Alessi CA, et al. Clarifying confusion: the confusion assessment method. A new method for detection of delirium. *Ann Intern Med* 1990;113:941–8.
- Bellelli G, Morandi A, Davis DHJ, et al. Validation of the 4AT, a new instrument for rapid delirium screening: a study in 234 hospitalised older people. *Age Ageing* 2014;43:496–502.
- Kesselheim AS, Gagne JJ, Franklin JM, et al. Variations in Patients' Perceptions and Use of Generic Drugs: Results of a National Survey. *J Gen Intern Med* 2016;31:609–14.
- Chan AHY, Horne R, Hankins M, et al. The Medication Adherence Report Scale: A measurement tool for eliciting patients' reports of nonadherence. *Br J Clin Pharmacol* 2020;86:1281–8.
- Ware J, Kosinski M, Keller SD. A 12-Item short-form health survey: construction of scales and preliminary tests of reliability and validity. *Med Care* 1996;34:220–33.
- Fairclough D. *Design and analysis of quality of life studies in clinical trials*. 2nd Edition ed. Chapman and Hall/CRC, 2010.
- Kesselheim AS, Avorn J, Sarpatwari A. The high cost of prescription drugs in the United States: origins and prospects for reform. *JAMA* 2016;316:858–71.
- Laugesen K, Ludvigsson JF, Schmidt M, et al. Nordic health registry-based research: a review of health care systems and key registries. *Clin Epidemiol* 2021;13:533–54.
- Darrow JJ, Chong JE, Kesselheim AS. Reconsidering the scope of US state laws allowing pharmacist substitution of generic drugs. *BMJ* 2020;369:m2236.
- Nokelainen H, Lämsä E, Ahonen R, et al. Reasons for allowing and refusing generic substitution and factors determining the choice of an interchangeable prescription medicine: a survey among pharmacy customers in Finland. *BMC Health Serv Res* 2020;20:82.
- Alrasheedy A, Hassali MA, Stewart K. Patient knowledge, perceptions, and acceptance of generic medicines: a comprehensive review of the current literature. *Patient Intell* 2014;6:1–29.

- 40 Association of the pharmaceutical industry in Norway (LMI). numbers and facts, 2021. Available: <https://www.lmi.no/lmi/nyttige-lenker/tall-og-fakta/>
- 41 The Danish Health Data Authority. 5-Year statistics for pharmaceutical sales, 2021. Available: [https://sundhedsdatastyrelsen.dk/da/tal-og-analyser/analyser-og-rapporter/laegemidler/5\\_aars\\_laegemiddelstatistik](https://sundhedsdatastyrelsen.dk/da/tal-og-analyser/analyser-og-rapporter/laegemidler/5_aars_laegemiddelstatistik)
- 42 Sreenivasan J, Khan MS, Khan SU, *et al.* Mental health disorders among patients with acute myocardial infarction in the United States. *Am J Prev Cardiol* 2021;5:100133.
- 43 Beauvais V, Marque A, Ferté G, *et al.* Factors influencing the use of the "not for generic substitution" mention for prescriptions in primary care: a survey with general practitioners. *BMC Health Serv Res* 2018;18:850.
- 44 Morita F, Wajngarten M, Katz M, *et al.* Short- and midterm adherence to platelet P2Y<sub>12</sub> receptor inhibitors after percutaneous coronary intervention with drug-eluting stents. *J Cardiovasc Pharmacol Ther* 2020;25:466–71.
- 45 Fosbøl EL, Ju C, Anstrom KJ, *et al.* Early cessation of adenosine diphosphate receptor inhibitors among acute myocardial infarction patients treated with percutaneous coronary intervention: insights from the TRANSLATE-ACS study (treatment with adenosine diphosphate receptor inhibitors: longitudinal assessment of treatment patterns and events after acute coronary syndrome). *Circ Cardiovasc Interv* 2016;9:e003602.
- 46 Colombo GL, Agabiti-Rosei E, Margonato A, *et al.* Impact of substitution among generic drugs on persistence and adherence: a retrospective claims data study from 2 local healthcare units in the Lombardy region of Italy. *Atheroscler Suppl* 2016;21:1–8.
- 47 Briesacher BA, Andrade SE, Fouayzi H, *et al.* Medication adherence and use of generic drug therapies. *Am J Manag Care* 2009;15:450–6.
- 48 Ude M, Schuessel K, Quinzler R, *et al.* Generic switch after ramipril patent expiry is not associated with decreased pharmacy refill compliance: a retrospective study using the DAPI database. *J Hypertens* 2011;29:1837–45.
- 49 Anker SD, Agewall S, Borggreve M, *et al.* The importance of patient-reported outcomes: a call for their comprehensive integration in cardiovascular clinical trials. *Eur Heart J* 2014;35:2001–9.
- 50 Norwegian Registry of Invasive Cardiology (NORIC). Annual report for 2019, 2020. Available: <https://www.kvalitetsregistre.no/sites/default/files/2021-02/%C3%85rsrapport%202019%20NORIC.pdf>
- 51 The Danish Heart Registry. Annual report for 2019, 2020. Available: [https://www.sdu.dk/da/sif/rapporter/2020/dansk\\_hjerterejesters\\_aarsberetning\\_2019](https://www.sdu.dk/da/sif/rapporter/2020/dansk_hjerterejesters_aarsberetning_2019)
- 52 Alemayehu C, Mitchell G, Nikles J, *et al.* Views and perceptions about locally manufactured medicines in Ethiopia: a qualitative study of physicians, patients and regulatory authorities. *BMC Health Serv Res* 2018;18:624.
- 53 Hassali MA, Wong ZY, Alrasheedy AA, *et al.* Perspectives of physicians practicing in low and middle income countries towards generic medicines: a narrative review. *Health Policy* 2014;117:297–310.

**Supplementary Table 1. Perceptions of generic medicines by country at two- and six-month follow-up.**

	T1 – two months after discharge from hospital			T2 – six months after discharge from hospital		
	Norwegian centres Low trust in generic medicines* n (%)	Danish centres Low trust in generic medicines* n (%)	<i>p</i> -value	Norwegian centres Low trust in generic medicines* n (%)	Danish centres Low trust in generic medicines* n (%)	<i>p</i> -value
Do you believe generic medicines to be as effective as brand-name medicines?	557 (37)	220 (20)	<0.001	505 (34)	183 (18)	<0.001
Do you believe generic medicines to be as safe as brand-name medicines?	592 (39)	229 (21)	<0.001	536 (36)	190 (18)	<0.001
Do you believe generic medicines to have the same side effects as brand-name medicines?	648 (43)	280 (26)	<0.001	601 (41)	274 (26)	<0.001
Do you believe generic medicines to be made of the same active ingredients as brand-name medicines?	635 (42)	298 (28)	<0.001	593 (40)	271 (26)	<0.001

\*Combined percentage of patients who answered “Unsure”, “Probably not” or “Definitely not”.

Chi-square test was applied to determine if perceptions of generic medicines differed between participating countries.

**Supplementary Table 2. Comparison of participants and those declining participation in the study for the Norwegian centres.**

	Participants (n=1970) n (%)	Non-participants (n=582) n (%)	OR	95% CI	p-value	OR	95% CI	p-value
	Descriptives		Unadjusted analysis			Adjusted analysis		
<b>Sex</b>								
Female vs male (ref)	1543 (78)	428 (73)	0.77	0.62 – 0.95	0.016	0.85	0.68 – 1.06	0.151
<b>Age</b> (mean, SD) <sup>a</sup>	66 (11)	69 (12)	0.87	0.83 – 0.90	<0.001	0.87	0.83 – 0.91	<0.001
<b>Indication for percutaneous coronary intervention</b>					<0.001			<0.001
Stable coronary artery disease (ref)	535 (27)	120 (21)						
Unstable angina pectoris	306 (16)	86 (15)	0.80	0.59 – 1.09	0.155	0.79	0.57 – 1.08	0.133
Non-ST-segment elevation myocardial infarction	578 (29)	183 (31)	0.71	0.55 – 0.92	0.009	0.74	0.57 – 0.96	0.022
ST-segment elevation myocardial infarction	406 (21)	105 (18)	0.87	0.65 – 1.16	0.339	0.79	0.59 – 1.07	0.127
Other <sup>b</sup>	145 (7)	84 (14)	0.39	0.28 – 0.54	<0.001	0.37	0.27 – 0.52	<0.001

Abbreviations: CI: confidence intervals, OR: odds ratio, ref: reference, SD: standard deviation.

<sup>a</sup>Odds ratio per 5 years.

<sup>b</sup>Other include arrhythmia examination, completion of previous percutaneous coronary intervention, heart failure/cardiomyopathy, non-specific chest pain, risk assessment following successful thrombolysis, suspected complications following angiography/percutaneous coronary intervention, valvular heart disease.

Logistic regression was performed to investigate relationships of sex, age and indication for percutaneous coronary intervention with participation.

**Supplementary Table 3. Comparison of responders and non-responders at two-month follow-up.**

	Responders T1 (n=2675) n (%)	Non-responders T1 (n=661) n (%)	OR	95% CI	p-value	OR	95% CI	p-value
	Descriptives		Unadjusted analysis			Adjusted analysis		
<b>Sex</b>								
Female vs male	2094 (78)	496 (75)	0.97	0.80 – 1.18	0.763	0.90	0.73 – 1.09	0.276
<b>Age (mean, SD)<sup>a</sup></b>	66 (10)	64 (12)	1.12	1.08 – 1.17	<0.001	1.12	1.08 – 1.17	<0.001
<b>Indication for percutaneous coronary intervention</b>								
Stable coronary artery disease (ref)	825 (31)	198 (27)			0.094			0.182
Unstable angina pectoris	335 (13)	106 (14)	0.76	0.58 – 0.99	0.043	0.80	0.61 – 1.05	0.104
Non-ST-segment elevation myocardial infarction	721 (27)	195 (26)	0.89	0.71 – 1.11	0.291	0.90	0.72 – 1.12	0.331
ST-segment elevation myocardial infarction	575 (22)	167 (23)	0.83	0.66 – 1.04	0.107	0.89	0.70 – 1.12	0.318
Other <sup>b</sup>	219 (8)	76 (10)	0.69	0.51 – 0.94	0.017	0.70	0.52 – 0.95	0.022

Abbreviations: CI: confidence intervals, OR: odds ratio, ref: reference, SD: standard deviation.

<sup>a</sup>Odds ratio per 5 years.

<sup>b</sup>Other include arrhythmia examination, completion of previous percutaneous coronary intervention, heart failure/cardiomyopathy, non-specific chest pain, risk assessment following successful thrombolysis, suspected complications following angiography/percutaneous coronary intervention, valvular heart disease.

Logistic regression was performed to investigate relationships of sex, age and indication for percutaneous coronary intervention with participation.



**Supplementary Table 4. Comparison of responders and non-responders at six-month follow-up.**

	Responders T2 (n=2581) n (%)	Non-responders T2 (n=836) n (%)	OR	95% CI	p-value	OR	95% CI	p-value
	Descriptives		Unadjusted analysis			Adjusted analysis		
<b>Sex</b>								
Female vs male	554 (22)	192 (23)	0.95	0.78 – 1.14	0.552	0.87	0.72 – 1.05	0.149
<b>Age</b> (mean, SD) <sup>a</sup>	66 (10)	64 (12)	1.12	1.08 – 1.16	<0.001	1.11	1.07 – 1.15	<0.001
<b>Indication for percutaneous coronary intervention</b>								
Stable coronary artery disease (ref)	806 (31)	217 (25)			0.004			0.024
Unstable angina pectoris	317 (12)	124 (15)	0.69	0.53 – 0.89	0.004	0.72	0.56 – 0.93	0.013
Non-ST-segment elevation myocardial infarction	696 (27)	220 (26)	0.85	0.69 – 1.05	0.140	0.86	0.69 – 1.06	0.164
ST-segment elevation myocardial infarction	532 (21)	210 (25)	0.68	0.55 – 0.85	0.001	0.73	0.58 – 0.91	0.004
Other <sup>b</sup>	215 (8)	80 (9)	0.72	0.54 – 0.97	0.033	0.73	0.54 – 0.99	0.041

Abbreviations: CI: confidence intervals, OR: odds ratio, ref: reference, SD: standard deviation.

<sup>a</sup>Odds ratio per 5 years.

<sup>b</sup>Other include arrhythmia examination, completion of previous percutaneous coronary intervention, heart failure/cardiomyopathy, non-specific chest pain, risk assessment following successful thrombolysis, suspected complications following angiography/percutaneous coronary intervention, valvular heart disease.

Logistic regression was performed to investigate relationships of sex, age and indication for percutaneous coronary intervention with participation.