



ORIGINAL ARTICLE

Impact of contact lens wear on epithelial alterations in keratoconus



Luigina Sorbara^{a,*}, Jose Carlos Lopez Lopez^f, Maud Gorbet^b, Kostadinka Bizheva^{a,c}, Jose Mateu Lamarca^e, José-Carlos Pastor^d, Miguel José Maldonado López^{a,b,c,d,e,f}, Denise Hileeto^a

^a School of Optometry & Vision Science, University of Waterloo, Waterloo, Ontario, Canada

^b Department of System Design Engineering, University of Waterloo, Waterloo, Ontario, Canada

^c Department of Physics and Astronomy, University of Waterloo, Waterloo, Ontario, Canada

^d IOBA, University of Valladolid, Spain

^e Barraquer Ophthalmology Institute, Barcelona, Spain

^f Barking Havering and Redbridge University Hospitals, Romford, UK

Received 3 September 2019; accepted 29 February 2020

Available online 4 May 2020

KEYWORDS

Keratoconus;
Epithelial corneal thickness;
Corneal histology;
Contact lens wear

Abstract

Purpose: The purpose of this study was to characterize the central epithelial thickness (CET) of penetrating keratoplasty corneal specimens obtained from patients with keratoconus (KC) and correlate the histological patterns with their clinical history.

Methods: Ex vivo histological imaging was performed to measure CET and total corneal thickness (TCT) in 56 patients with KC. Microscopic slides from penetrating keratoplasty corneal specimens, stained with hematoxylin and eosin were evaluated using bright field microscopy. CET and TCT were measured, and morphological features were studied. Clinical history regarding duration of KC prior to surgery and length of and tolerance to contact lens wear were compared and analyzed.

Results: The microscopic slides of all patients available for follow up ($n=48$) were analyzed and CET and TCT were measured. The histological evaluation revealed 3 distinctive epithelial patterns. Pattern 1 with central hypertrophic and hydropic changes ($n=19$) measured $70.89 \pm 25.88 \mu\text{m}$ in CET and $308.63 \pm 100.74 \mu\text{m}$ in TCT; Pattern 2 ($n=14$) had not changed, similar to normal epithelium CET and TCT measuring $36.5 \pm 7.02 \mu\text{m}$ and $260.14 \pm 87.93 \mu\text{m}$ respectively. Pattern 3 ($n=15$) demonstrated thinner central epithelium characterized by atrophy and focal hydropic changes measuring $19.93 \pm 4.60 \mu\text{m}$ and $268.00 \pm 79.39 \mu\text{m}$ in CET and TCT respectively (all $p < 0.0001$). The presence of Pattern 2 characterized by similar to normal CET was correlated with the duration of the condition ($R=0.600$, $p=0.030$). There was a significant difference in the length of CL wear comparing those with patterns 1 and 2 versus 3 (least no. of CL years) ($p=0.05$ and $p=0.33$ respectively).

* Corresponding author at: University of Waterloo, School of Optometry and Vision Science, Waterloo, Ontario N2L 3G1, Canada.
E-mail address: gsorbara@uwaterloo.ca (L. Sorbara).

Conclusions: Patients with advanced disease have various central corneal epithelial changes detected with histology. Although each central epithelial pattern type was distinctive comparing the 3 patterns, there was no correlation with years of CL wear but only with the duration of the condition.

© 2020 Spanish General Council of Optometry. Published by Elsevier España, S.L.U. This is an open access article under the CC BY-NC-ND license (<http://creativecommons.org/licenses/by-nc-nd/4.0/>).

Introduction

Keratoconus (KC) is a bilateral degenerative disease characterized by a non-inflammatory, progressive central or nearly central corneal ectasia (typically asymmetric) and decreased vision.^{1,2} Once diagnosed the progression of KC, if in the early stages, can be slowed down with corneal crosslinking, when available.³ KC is managed mainly with the use of either corneal rigid contact lenses^{4–6} or scleral rigid contact lenses.⁷ The back surface of these contact lenses will form a spherical front surface of the tear film thereby correcting the corneal irregularity that KC induces as the cornea thins and becomes more ectatic with time.⁸ The effect of corneal or scleral contact lenses on the morphological characteristics of the KC cornea or its progression is not well known.

The measurement of corneal thickness as an indicator of KC progression is common with the use of optical and ultrasound pachymeters.^{9,10} Central epithelial and total corneal thicknesses have been recently measured with optical coherence tomography and histology for higher resolution images that offer more precise measurements.^{11–15} These higher resolution images can more clearly detect morphological changes that can help categorize if KC is mainly an epithelial or a stromal condition or both.

The cornea consists of multiple layers that include the epithelium, anterior limiting membrane, the stroma, pre-Descemet's layer, Descemet's membrane and the endothelium.^{16,17} Histological studies have identified that each of these layers can be affected by KC.¹⁸ Normal corneal epithelium consists of 5–6 layers of squamous non-keratinizing epithelium arranged fairly uniformly thereby providing smooth anterior corneal surface. The stroma consists of a regularly arranged collagen matrix lamellar structure.¹⁹

Histopathological changes in KC include progressive thinning and irregularity of the cornea, Bowman membrane breaks, increased stromal density, spatial disorganization, and epithelial abnormalities.^{18,20} Thinning of the corneal stroma is an established fact in KC.²¹ However, significant differences and conflicting evidence has been presented in terms of the histopathological characteristics of the corneal epithelium and their impact on treatment approaches and rates of complications. Some studies involving histological analysis of corneas with KC demonstrate significant thinning of the central epithelium.²² On the contrary, other studies report thickened epithelia in KC^{23–25} or no difference in epithelial thickness between KC and normal controls.²⁶

Analysis of corneal buttons obtained after penetrating keratoplasty in our laboratory revealed the existence of

three patterns in the corneal epithelium of patients with keratoconus which have not been previously described. These patterns could have an important role in a more accurate interpretation of the new imaging techniques used for in vivo early diagnosis of the disease.²⁷

The purpose of this study was to first characterize the central thickness of keratoconic corneae (ex vivo) and then to correlate these morphological patterns with their clinical history.

Methods

This study is a retrospective examination of corneal penetrating keratoplasty specimens. The clinical decision to perform a penetrating keratoplasty was taken based on clinical criteria after all conservative measures had been exhausted. None of the patients having keratoplasty were immunocompromised, had chronic autoimmune conditions or were placed on prolonged immunosuppressive therapy. None of the patients were on topical eye or systemic medication that would affect the progression or long term health of the corneal epithelium. 56 penetrating keratoplasty specimens were selected from the archives of IOBA Ocular Pathology Laboratory of the University of Valladolid in Spain. All paraffin blocks were retrieved, 5 μ m-thick sections were made using a microtome (Leica Biosystems, Nussloch, Germany) and stained with hematoxylin and eosin (H&E) and periodic acid of Schiff (PAS). Histological slides of a section of the corneal buttons in their entirety were evaluated by two independent pathologists in a blind fashion using bright field microscopy (Leica DMLB4000, Leica Microsystems, Wetzlar Germany). Thickness measurements were taken from the microscopic slides and represent an average of 5 evenly spaced vertical measurements encompassing a high power view of the central area of corneal buttons. This study was performed in accordance with tenets of the Declaration of Helsinki and all procedures were approved by the University of Valladolid ethics committee.

Central corneal epithelial thickness was measured, and morphological features of the epithelium were studied in order to identify differences and possible patterns of alteration that were previously noted by the authors. Clinical history regarding duration of the condition prior to surgery and length of and tolerance to contact lens wear were compared and analyzed to find if a relationship was present with the pattern type.

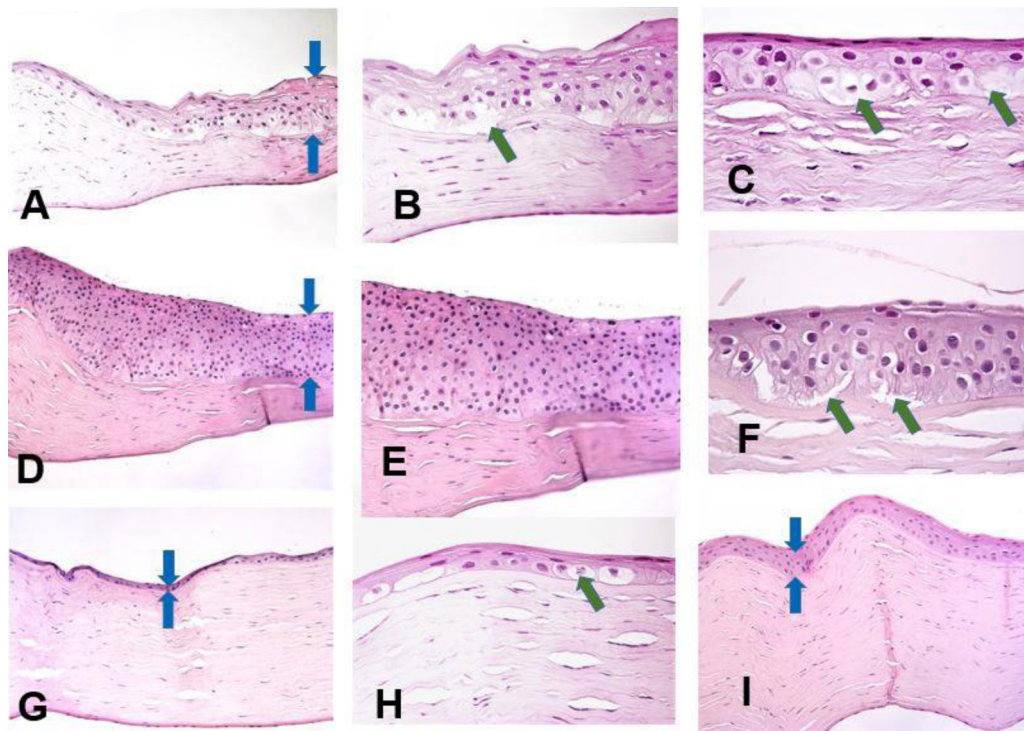


Figure 1 Histopathology preparation of H&E stained penetrating keratoplasty specimens of patients with keratoconus. Distinctive patterns of epithelial alteration of the central cornea.

- [a)] Increased central corneal epithelial thickness (blue arrows) with hypertrophy and pronounced hydropic changes. Original magnification 20 \times .
- b) Increased central corneal epithelial thickness (green arrow) with hypertrophy and pronounced hydropic changes. Original magnification 40 \times .
- c) Pronounced hydropic changes (green arrows) in the central corneal epithelium in keratoconus. Original magnification 63 \times .
- d) Increased central corneal epithelial thickness with marked hyperplasia of the epithelium (blue arrows). Original magnification 20 \times .
- e) Marked hyperplasia of the central corneal epithelium. Original magnification 40 \times .
- f) Focal hydropic changes with partial epithelial detachment in the central corneal epithelium (green arrows). Original magnification 63 \times .
- g) Patient with advanced keratoconus with unchanged central epithelial thickness (blue arrows). Original magnification 20 \times .
- h) Markedly reduced central epithelial thickness with atrophy (blue arrows). Original magnification 20 \times .
- i) Markedly reduced central epithelial thickness with atrophy and focal cell swelling (green arrow). Original magnification 63 \times .

Results

Three distinctive patterns of epithelial alteration of the central cornea were established. The most common pattern (Pattern 1) accounting for 19 of the cases was characterized by statistically significant increase in central cornea epithelial thickness with hypertrophy and pronounced hydropic changes (Fig. 1A–C) or hyperplasia with focal hydropic change (Fig. 1D–F, central epithelium indicated by blue arrows). The hydropic changes ranged from focal cellular swelling to patchy vacuolar degeneration to complete ballooning with cell loss and partial intraepithelial and sub-epithelial detachment (indicated by green arrows).

The second pattern ($n=14$) was characterized by an unaltered central epithelial thickness ($36.5 \pm 1.75 \mu\text{m}$), with morphological features of the central corneal epithelium comparable to those of healthy corneae (Fig. 1I). There were no hydropic, hypertrophic, hyperplastic or atrophic

alterations present in this subset of cases. In these cases the overall central corneal thinning was due to stromal thinning, with little to no contribution from the epithelial component.

The third pattern ($n=15$) constituted of markedly reduced central epithelial thickness ($19.9 \pm 1.2 \mu\text{m}$) with frank atrophy (Fig. 1G) or atrophy with focal swelling (Fig. 1H). The central corneal epithelium was composed of 1–2 layers of epithelial cells with focal degenerative changes. The epithelial thinning contributed significantly to the overall central corneal thinning.

In the second part of the study that included all 48 patients for whom we had sufficient clinical history, 36 male and 14 female patients, and examined the relationship of clinical history and pattern type as shown in Table 1. Clinical factors that were examined included: age at the time of keratoplasty, contact lens tolerance and duration of lens wear. All specimens were derived from patients that either wore no contact lenses as they were intolerant but were previous corneal gas permeable lens wearers or were

Table 1 Table of central epithelium and total thicknesses comparing the 3 pattern types.

Parameter	Pattern 1		Pattern 2		Pattern 3	
	Mean	±SD	Mean	±SD	Mean	±SD
Overall Thickness Central cornea (μm)	308.63	100.74	260.14	87.93	268.00	79.39
Epithelial Thickness Central cornea (μm)	70.78*	25.88	36.5*	7.02	19.93*	4.60
Age	31.37	12.97	38.86	16.62	27.80	12.38
Time between Diagnosis and PKP (years)	8.84	5.75	11.08	9.95	8.54	5.90
Years of CL Wear	4.92**	6.70	7.65**	9.11	1.46**	2.44
Gender	Males = 10:females = 9		Males = 12:females = 2		Males = 12:females = 3	

* Indicates significant differences ($p < 0.0001$).

** Indicates significant difference (1 vs 3: $p = 0.05$, 2 vs 3: $p = 0.033$).

Bold indicates a significant +ve Correlation ($p = 0.03$).

currently wearing corneal gas permeable lenses at the time of the keratoplasty. The results of central epithelial thickness (CET) were significantly different comparing each pattern ($p < 0.0001$). Significant changes in CET having pattern 2 was correlated only with the duration of the condition taken from the first recorded visit ($p = 0.03$) (Table 1).

For the 48 corneae examined, within the central area of the cornea, the thickened (hypertrophic and hydroptic) epithelium thickness (pattern 1, $n = 19$) was $70.89 \pm 25.88 \mu\text{m}$ and the total thickness was $308.63 \pm 100.74 \mu\text{m}$. The epithelial thickness and total thickness centrally was $36.5 \pm 7.02 \mu\text{m}$ and $260.14 \pm 87.93 \mu\text{m}$ with pattern 2, having moderate hyperplastic and focal hydroptic changes ($n = 14$). The epithelial and total corneal thicknesses were $19.93 \pm 4.60 \mu\text{m}$ and $268.00 \pm 79.39 \mu\text{m}$, respectively with pattern 3, having atrophy and atrophy with focal swelling ($n = 15$).

There were no significant differences among the three pattern types when compared ($p > 0.05$) considering the duration of the disorder from initial diagnosis to keratoplasty (Fig. 2). There was a positive correlation between the time of the first visit to keratoplasty for those with pattern 2 compared to corneal epithelial thickness ($R = 0.600$, $p = 0.03$) (Fig. 3).

There was a significant difference in the age at the time of keratoplasty (Fig. 4), comparing those with pattern 3 (atrophic epithelium) to patterns 1 and 2 ($p < 0.02$) (Fisher $p < 0.03$).

There was a significant difference in the length of CL wear (Fig. 5) comparing those with patterns 1 and 2 versus 3 (least number of CL years) (Pattern 1 versus 3: $p = 0.05$ and $p = 0.033$ Pattern 2 versus 3).

Those with pattern 3 were found to be significantly less tolerant to contact lenses ($p < 0.03$) as shown in Fig. 6.

Discussion

Normally the thickness of the corneal epithelium of approximately 48 ± 5 microns does not vary across the cornea from limbus to limbus (whereas the stromal layer does as it thickens toward the periphery).²⁸ This study attempted to categorize central epithelial thickness in keratoconus affected pathological corneae where the epithelial thickness did not

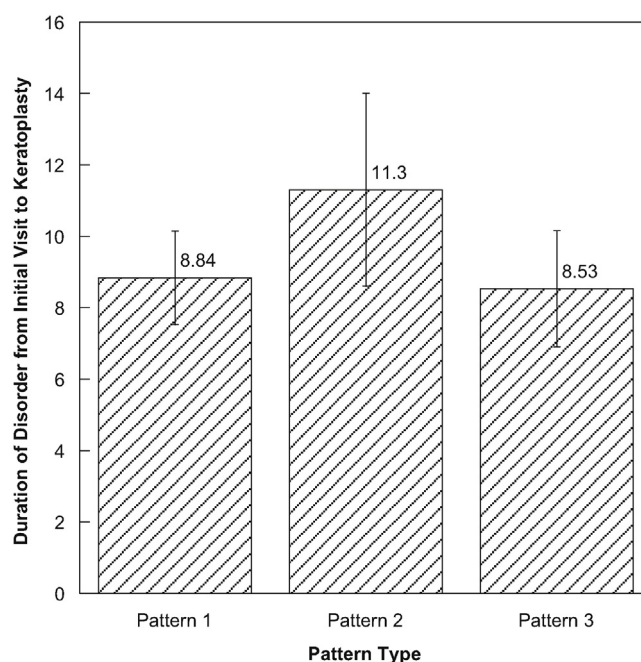


Figure 2 Figure showing the duration of the disorder from initial visit to the time of keratoplasty by pattern type.

appear to be consistent across its entirety. The variation in central epithelial thickness lead to the characterization of 3 distinct central corneal epithelial thickness patterns where there was thickening of the epithelium (pattern 1), to unaltered of the epithelium (pattern 2), to significantly thinner epithelium (pattern 3), all compared theoretically²⁹ to average eye. Central corneal epithelium in keratoconus responds with characteristic compensatory changes ranging from hypertrophy and hyperplasia to atrophy.²² This study has found 3 distinctive histologic patterns that could potentially have a diagnostic and prognostic value. To the best of our knowledge these patterns have not been previously described in the literature. The stroma in keratoconus undergoes changes in a progressive stepwise fashion therefore the particular measurements that were found may represent varying degrees of alterations at different stages. Stromal changes in keratoconus involve spacial disorgani-

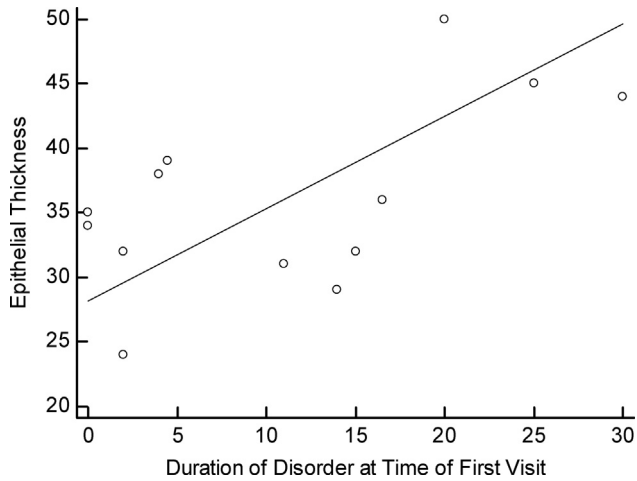
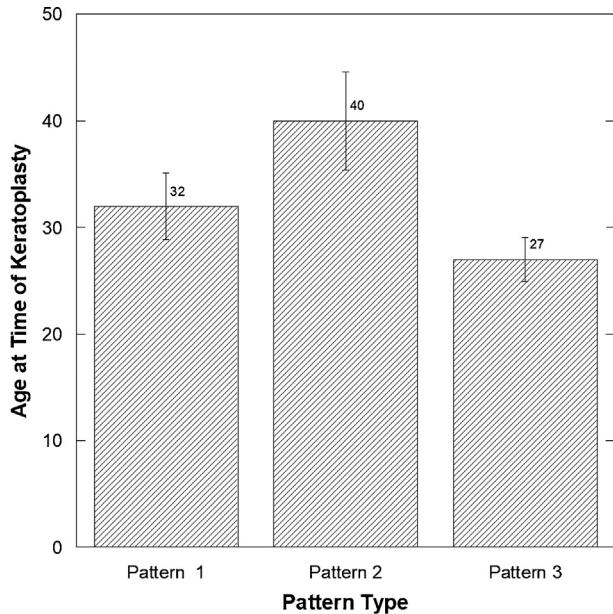


Figure 3 Figure showing the correlation of the duration of the disorder from initial visit to the time of keratoplasty by pattern type.



Pattern 1: increased thickness Pattern 2: average thickness Pattern 3 atrophic

Figure 4 Figure showing the age at the time of keratoplasty comparing the three pattern types.

zation of collagen fibers and abnormal extracellular matrix remodeling resulting in overall thinner, more compact, but weaker stroma. Multiple factors could be responsible for the similar overall central thickness of the cornea found with Pattern 2, one being varying degrees of swelling of the stroma likely due to impaired barrier function and Bowman membrane breaks even if normal appearing in thickness and morphology. Morphologically healthy but functionally impaired epithelium could cause stromal changes through facilitating the exposure to mechanical, chemical and biological environmental agents including the normal flora. The thicker stroma in the atrophic epithelium group (Pattern 3) could be attributed to a possible compensatory mechanism to the increased sheer stress from the mechanical friction of the protruded area with less epithelial cushioning, which

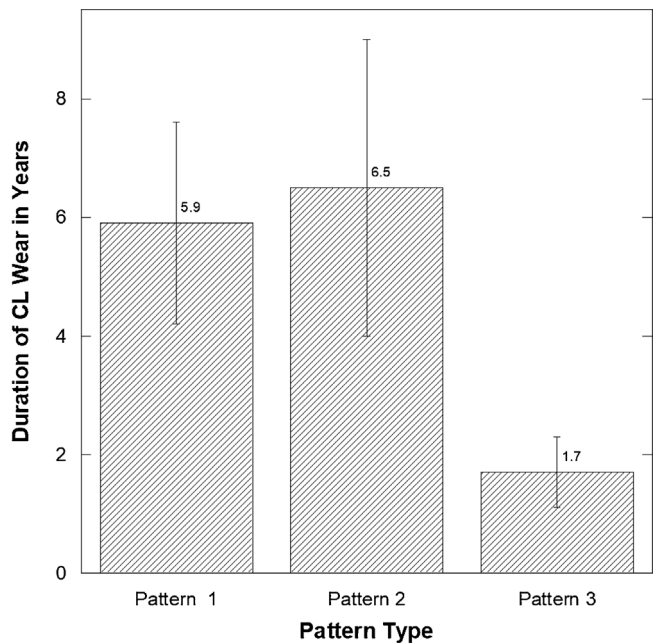
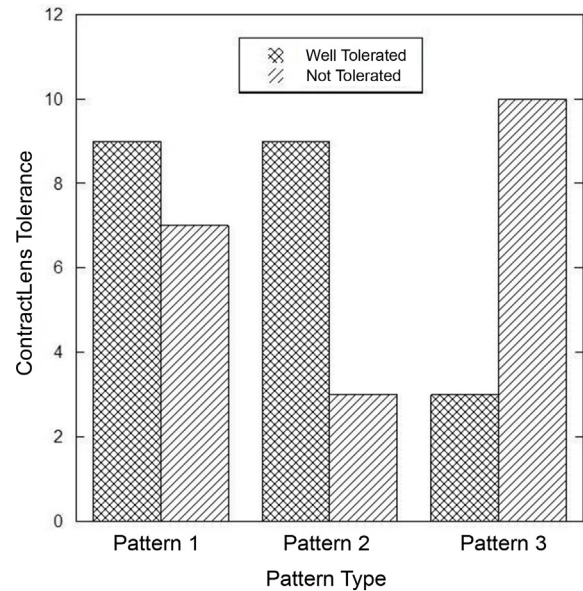


Figure 5 Figure showing the length of CL wear comparing the three pattern types.



Pattern 1: increased thickness Pattern 2: average thickness Pattern 3 atrophic

Figure 6 Figure showing the tolerance to contact lenses comparing the three pattern types.

could have caused a compensatory stromal re-enforcement through alternative matrix and fiber remodeling. Contact lenses may impact the changes found in the epithelium but there are other potential factors that remain unaccounted for in this small retrospective study of histological patterns including sex (women) where the majority had Pattern 1, characterized by thickened epithelium.

Nowadays, the use of in vivo techniques such as ultra-high resolution OCT have increased interest in the study of the corneal epithelial layer and new therapeutic procedures have also been developed. However, the application

of these innovations in the prognosis and treatment of KC has not been explored in detail.^{30–33} On the other hand, the advantage of this histological study is that there is no eye movement and no disturbances, unlike OCT where these would degrade the image resolution. Histology also provides a precise visualization of the morphology of the epithelial cells, not visible with OCT, which could subsequently reveal potential mechanisms of disease progression.

Contact lens fitting as well as other treatment methods like corneal cross-linking are highly dependent on the epithelial properties and involve epithelium based variations in the techniques with different degrees of treatment success and failure.^{34–36}

In a study performed by Mathew et al. the authors describe similar outcomes in 12 corneae examined histologically.²⁰ They found a range for the central epithelial thickness from 13.5 to 91.6 μm with an average of 42.2 μm ; the average in this study was 42.4 μm across our three patterns. Our results also provide more evidence that keratoconus affects a wide area of the central cornea. This has been shown in a study by Brautaset et al. using commercially available instrumentation examining overall corneal thickness and comparing central thicknesses compared to controls.³⁷ Using a higher resolution OCT and topographical measurements, Li et al., found only in the inferior zone that the epithelial thinning was significantly different than the normals he measured and related their results to the difficulty in OCT detecting the back surface of the epithelium due to the lack of Bowman's membrane in most cases.³⁸ They could not relate epithelial thinning due to the lack of information regarding age and contact lens wear. There was also a large amount of variability in epithelial thickness apically using OCT in a study by Rocha et al. who concluded that regional irregularity of the epithelium should be directly measured when considering corneal cross-linking where the underlying stroma which consequently will also be variable in thickness may be clinically relevant.³⁹

Our results are unique as we have collected clinical data to find whether these differences in epithelial thickness are related to the duration of contact lens wear and of the condition, lens tolerance and age at the time of the PKP. The atrophic epithelial pattern (pattern 3) tends to be present in significantly younger patients who are significantly less likely to tolerate lenses. This implies that central epithelial atrophy is not the natural progression of the disorder in all cases because patients with atrophic epithelial pattern are not older than the rest of the study population. The implication of this study may be that younger patients with the atrophic pattern are as mentioned less likely to tolerate lenses and therefore may benefit from different treatments and strategies for conservative management, of their keratoconus since they have significantly lower contact lens wear time and or tolerance.

The limitations of the study is its relatively small sample size and the limited data included in the clinical history at the time of the keratoplasty. One of the possible benefits of our work could be a greater use of cost-effective conservative techniques such as cross-linking.⁴⁰ A significant decrease in the number of keratoplasties performed in patients with keratoconus was found in those patients treated with cross-linking which is normally performed on younger patients. Another technique that could

be influenced would be the use of intrastromal corneal ring segments, which were approved by the FDA for the treatment of keratoconus in 2004.⁴¹

Further studies are necessary to determine the accuracy of the current imaging techniques in determination of progressive epithelial changes in keratoconus and establish their value in terms of patient management. Future work is also necessary to establish the significance of these morphological patterns by using ultra-high resolution optical coherence tomography (UHR-OCT). Also, its potential use of some of our findings as predictive factors in the progression of keratoconus needs to be elucidated.

Conclusion

Patients with advanced keratoconus have various central corneal epithelial changes that can be detected with histology. Although each central epithelial pattern type was distinctive and different comparing the three patterns, there was no correlation with years of CL wear but only with the duration of the condition. Patients with atrophic epithelium showed significantly reduced tolerance to contact lens wear compared to patients with intact or hypertrophic central epithelium.

Funding sources

Funding provided through the International European Union Partnership Grant.

Conflict of interest

No author has any conflicts of interest associated with any of the information or products discussed in this manuscript.

Acknowledgements

We are grateful to the Office of Research of the University of Waterloo (Waterloo, Ontario, Canada) for the funding provided to us through the International European Union Partnership Grant. We also would like to thank Centro de Oftalmología Barraquer (Barcelona, Spain) and IOBA, University of Valladolid (Valladolid, Spain) for providing us with the corneal samples for diagnosis.

References

1. Krachmer JH, Feder RS, Belin MW. Keratoconus and related noninflammatory corneal thinning disorders. *Surv Ophthalmol.* 1984;28:293–322.
2. Lawless M, Coster DJ, Phillips AJ, Loane M. Keratoconus: diagnosis and management. *Aust NZJ Ophthalmol.* 1989;17:33–60.
3. Kymionis G, Portaliou D. Corneal crosslinking with riboflavin and UVA for the treatment of keratoconus. *J Cat Refract Surg.* 2007;33:1143–1144.
4. Sorbara L, Dalton K. The use of video-keratoscopy in predicting contact lens parameters for keratoconic fitting. *Cont Lens Anter Eye.* 2010;33:112–118.
5. Sorbara L, Luong J. Contact lens fitting guidelines for the keratoconic patient using videokeratographic data. *Pract Optom.* 1999;10:238–243.

6. Sorbara L, Mueller K. Effect of lens diameter on lens performance and initial comfort of two types of GP lenses for keratoconus: a pilot study. *J Optom.* 2011;4:22–29.
7. Dalton K, Sorbara L. Fitting an MSD (mini scleral design) rigid contact lens in advanced keratoconus with INTACS. *Cont Lens Anter Eye.* 2011;34:274–281.
8. Mandell RB. Contemporary management of keratoconus. *Int Cont Lens Clin.* 1997;24:43–58.
9. Reinstein DZ, Archer TJ, Gobbe M. Corneal epithelial thickness profile in the diagnosis of keratoconus. *J Refract Surg.* 2009;25:604–610.
10. Owen H, Watters GA. An evaluation of the keratoconic cornea using computerised corneal mapping and ultrasonic measurements of corneal thickness. *Ophthalm Physiol Opt.* 1996;16:115–123.
11. Catalan S, Cadarso L, Esteves F, Salgado-Borges J, Lopez M, Cadarso C. Assessment of corneal epithelial thickness in asymmetric keratoconic eyes and normal eyes using Fourier domain optical coherence tomography. *J Ophthalmol.* 2016;2016.
12. Xu Z, Jiang J, Yang C, et al. Value of corneal epithelial and Bowman's layer vertical thickness profiles generated by UHR-OCT for sub-clinical keratoconus diagnosis. *Scient Rep.* 2016;6:31550, <http://dx.doi.org/10.1038/srep31550>.
13. Kanellopoulos AJ, Asimellis G. Comparison of high-resolution Scheimpflug and high-frequency ultrasound biomicroscopy to anterior-segment OCT corneal thickness measurements. *Clin Ophthalmol.* 2013;7:2239–2247, <http://dx.doi.org/10.2147/OPTH.S53718>.
14. Rocha KM, Perez-Straziota CE, Stulting RD, Randleman JB. SD-OCT analysis of regional epithelial thickness profiles in keratoconus, postoperative corneal ectasia, and normal eyes. *J Refract Surg.* 2013;29:173–179, <http://dx.doi.org/10.3928/1081597X-20130129-08>.
15. Bizheva K, Tan B, MacLellan B, et al. Sub-micrometer axial resolution OCT for in-vivo imaging of the cellular structure of healthy and keratoconic human corneas. *Biomed Opt Expr.* 2017;8:800–812.
16. Binder PS, Rock ME, Schmidt KC, Anderson JA. High-voltage electron microscopy of normal human cornea. *Invest Ophthalmol Vis Sci.* 1991;32:2234–2243.
17. Jalbert I, Stapleton F, Papas E, Sweeney DF, Coroneo M. In vivo confocal microscopy of the human cornea. *Br J Ophthalmol.* 2003;87:225–236.
18. Sherwin T, Brookes NH. Morphological changes in keratoconus: pathology or pathogenesis. *Clin Exp Ophthalmol.* 2004;32:211–217, <http://dx.doi.org/10.1111/j.1442-9071.2004.00805.x>.
19. Komai Y, Ushiki T. The three-dimensional organization of collagen fibrils in the human cornea and sclera. *Invest Ophthalmol Vis Sci.* 1991;32:2244–2258.
20. Mathew JH, Goosey JD, Bergmanson JP. Quantified histopathology of the keratoconic cornea. *Optom Vis Sci: Off Publ Am Acad Optom.* 2011;88:988–997.
21. Rabinowitz YS. Keratoconus. *Surv Ophthalmol.* 1998;42:297–319, [http://dx.doi.org/10.1016/S0039-6257\(97\)00119-7](http://dx.doi.org/10.1016/S0039-6257(97)00119-7).
22. Scroggs MW, Proia AD. Histopathological variation in keratoconus. *Cornea.* 1992;11:553–559.
23. Kim WJ, Rabinowitz YS, Meisler DM, Wilson SE. Keratocyte apoptosis associated with keratoconus. *Exp Eye Res.* 1999;69:475–481.
24. Sherwin T, Brookes N, Loh I-P, Poole C, Clover G. Cellular incursion into Bowman's membrane in the peripheral cone of the keratoconic cornea. *Exp Eye Res.* 2002;74:473–482.
25. Dillon EC, Eagle RC, Laibson PR. Compensatory epithelial hyperplasia in human corneal disease. *Ophthalm Surg Lasers Imaging Ret.* 1992;23:729–732.
26. Erie JC, Patel SV, McLaren JW, Nau CB, Hodge DO, Bourne WM. Keratocyte density in keratoconus. A confocal microscopy study. *Am J Ophthalmol.* 2002;134:689–695.
27. Hollingsworth JG, Bonshek RE, Efron N. Correlation of the appearance of the keratoconic cornea in vivo by confocal microscopy and in vitro by light microscopy. *Cornea.* 2005;24:397–405.
28. Zadnik K, Steger-May K, Fink BA, et al. Between-eye asymmetry in keratoconus. *Cornea.* 2002;21:671–679, <http://dx.doi.org/10.1097/01.IC0.0000027334.66060.E1>.
29. Feng Y, Simpson TL. Comparison of human central cornea and limbus in vivo using optical coherence tomography. *Optom Vis Sci.* 2005;82:416–419.
30. Haque S, Simpson T, Jones L. Corneal and epithelial thickness in keratoconus: a comparison of ultrasonic pachymetry, Orbscan II, and optical coherence tomography. *J Refract Surg.* 2006;22:486–493.
31. Bizheva K, Hutchings N, Sorbara L, Moayed AA, Simpson T. In vivo volumetric imaging of the human corneal-scleral limbus with spectral domain OCT. *Biomed Opt Expr.* 2011;2:1702–1794, <http://dx.doi.org/10.1364/BOE.2.001794>.
32. Bizheva K, Lee P, Sorbara L, Hutchings N, Simpson T. In vivo volumetric imaging of the human upper eyelid with ultrahigh-resolution optical coherence tomography. *J Biomed Opt.* 2010;15:040508, <http://dx.doi.org/10.1117/1.3475957>.
33. Hutchings N, Simpson TL, Hyun C, et al. Swelling of the human cornea revealed by high-speed, ultrahigh-resolution optical coherence tomography. *Invest Ophthalmol Vis Sci.* 2010;51:4579–4584, <http://dx.doi.org/10.1167/iovs.09-4676>.
34. Antoun J, Slim E, el Hachem R, et al. Rate of corneal collagen crosslinking redo in private practice: risk factors and safety. *J Ophthalmol.* 2015;2015.
35. Hirji N, Sykakis E, Lam FC, et al. Corneal collagen crosslinking for keratoconus or corneal ectasia without epithelial debridement. *Eye.* 2015;29:764.
36. Ziaei M, Barsam A, Shamie N, et al. Reshaping procedures for the surgical management of corneal ectasia. *J Cat Refract Surg.* 2015;41:842–872.
37. Brautaset RL, Nilsson M, Miller WL, Leach NE, Tukler JH, Bergmanson JPG. Central and peripheral corneal thinning in keratoconus. *Cornea.* 2013;32:257–261.
38. Li Y, Tan O, Brass R, Weiss JL, Huang D. Corneal epithelial thickness mapping by Fourier-domain optical coherence tomography in normal and keratoconic eyes. *Ophthalmology.* 2012;119:2425–2433.
39. Rocha KM, Perez-Straziota CE, Stulting RD, Randleman JB. SD-OCT analysis of regional epithelial thickness profiles in keratoconus, postoperative corneal ectasia, and normal eyes. *J Refract Surg.* 2013;29:173–179.
40. Godefrooij DA, Gans R, Imhof SM, Wisse RP. Nationwide reduction in the number of corneal transplantations for keratoconus following the implementation of cross-linking. *Acta Ophthalmol.* 2016;94:675–678.
41. Saib N, Bonnel S, Fenolland J-R, et al. Intrastromal corneal rings and corneal collagen crosslinking for progressive keratoconus: comparison of two sequences. *Eye.* 2015;29:294.