

2-17-2015

## **Risk of adverse events among older adults following co-prescription of clarithromycin and statins not metabolized by cytochrome P450 3A4**

Daniel Q. Li  
*Western University*

Richard Kim  
*Western University, richard.kim@lhsc.on.ca*

Eric McArthur  
*Western University*

Jamie L. Fleet  
*Western University*

David G. Bailey  
*London Health Sciences Centre*

*See next page for additional authors*

Follow this and additional works at: <https://ir.lib.uwo.ca/paedpub>

---

### **Citation of this paper:**

Li, Daniel Q.; Kim, Richard; McArthur, Eric; Fleet, Jamie L.; Bailey, David G.; Juurlink, David; Shariff, Salimah Z.; and Gomes, Tara, "Risk of adverse events among older adults following co-prescription of clarithromycin and statins not metabolized by cytochrome P450 3A4" (2015). *Paediatrics Publications*. 2473.

<https://ir.lib.uwo.ca/paedpub/2473>

---

**Authors**

Daniel Q. Li, Richard Kim, Eric McArthur, Jamie L. Fleet, David G. Bailey, David Juurlink, Salimah Z. Shariff, and Tara Gomes

# Risk of adverse events among older adults following co-prescription of clarithromycin and statins not metabolized by cytochrome P450 3A4

Daniel Q. Li BSc, Richard Kim MD, Eric McArthur MSc, Jamie L. Fleet BHSc, David G. Bailey PhD, David Juurlink MD PhD, Salimah Z. Shariff PhD, Tara Gomes MHSc, Muhammad Mamdani PharmD MPH, Sonja Gandhi BSc, Stephanie Dixon PhD, Amit X. Garg MD PhD

See also commentary on page 163 and at [www.cmaj.ca/lookup/doi/10.1503/cmaj.150030](http://www.cmaj.ca/lookup/doi/10.1503/cmaj.150030)

**Competing interests:** Tara Gomes has received grant funding for the Ontario Drug Policy Research Network from the Ontario Ministry of Health and Long-Term Care. Muhammad Mamdani serves on *CMAJ's* Editorial Advisory Board (but had no role in the decision to publish this paper) and has been on advisory boards for AstraZeneca, Bristol-Myers Squibb, Eli Lilly and Company, GlaxoSmithKline, Hoffman-La Roche, Novartis, Novo Nordisk and Pfizer. Amit Garg received an investigator-initiated grant from Astellas and Roche to support a Canadian Institutes of Health Research study involving living kidney donors; his institution received unrestricted research funding from Pfizer. No other competing interests were declared.

This article has been peer reviewed.

**Correspondence to:** Amit Garg, [amit.garg@lhsc.on.ca](mailto:amit.garg@lhsc.on.ca)

*CMAJ* 2015, DOI:10.1503/cmaj.140950

## ABSTRACT

**Background:** The cytochrome P450 3A4 (CYP3A4) inhibitor clarithromycin may also inhibit liver-specific organic anion-transporting polypeptides (OATP1B1 and OATP1B3). We studied whether concurrent use of clarithromycin and a statin not metabolized by CYP3A4 was associated with an increased frequency of serious adverse events.

**Methods:** Using large health care databases, we studied a population-based cohort of older adults (mean age 74 years) who were taking a statin not metabolized by CYP3A4 (rosuvastatin [76% of prescriptions], pravastatin [21%] or fluvastatin [3%]) between 2002 and 2013 and were newly prescribed clarithromycin ( $n = 51\,523$ ) or azithromycin ( $n = 52\,518$ ), the latter an antibiotic that inhibits neither CYP3A4 nor OATP1B1 and OATP1B3. Outcomes were hospital admission with a diagnostic code for rhabdomyolysis, acute kidney injury or hyperkalemia, and all-cause mortality. All outcomes were assessed within 30 days after co-prescription.

**Results:** Compared with the control group, patients co-prescribed clarithromycin and a statin not metabolized by CYP3A4 were at increased risk of hospital admission with acute kidney injury (adjusted relative risk [RR] 1.65, 95% confidence interval [CI] 1.31 to 2.09), admission with hyperkalemia (adjusted RR 2.17, 95% CI 1.22 to 3.86) and all-cause mortality (adjusted RR 1.43, 95% CI 1.15 to 1.76). The adjusted RR for admission with rhabdomyolysis was 2.27 (95% CI 0.86 to 5.96). The absolute increase in risk for each outcome was small and likely below 1%, even after we considered the insensitivity of some hospital database codes.

**Interpretation:** Among older adults taking a statin not metabolized by CYP3A4, co-prescription of clarithromycin versus azithromycin was associated with a modest but statistically significant increase in the 30-day absolute risk of adverse outcomes.

Statins may soon be recommended for more than a billion people worldwide.<sup>1</sup> Although past clinical trials have generally proven statins to be safe,<sup>2</sup> a 2012 Internet-based survey suggested that almost one-third of statin users experience adverse effects.<sup>3</sup> In a small number of individuals, statin use has been associated with serious effects, including rhabdomyolysis, acute kidney injury, hyperkalemia and death.<sup>4–6</sup> The risk of statin toxicity increases with higher blood statin concentrations, which can arise when concurrent medications alter the pharmacokinetics of statins.<sup>7</sup> Traditional pharmacokinetic models attribute this increase to the inhibition of the drug-metabolizing enzyme cytochrome P450 3A4 (CYP3A4).

More recent evidence supports an additional cause that involves reduced drug transporter-

mediated hepatic uptake of statins.<sup>8–13</sup> For example, several haplotypes of commonly occurring genetic polymorphisms in the liver-specific organic anion-transporting polypeptide 1B1 (OATP1B1) were associated with increased blood concentrations of the non-CYP3A4-metabolized statins rosuvastatin and pravastatin in humans.<sup>13–16</sup> Clarithromycin has been shown to inhibit OATP1B1 and OATP1B3 in hepatocyte cell cultures.<sup>10</sup> However, we found no data to show the effect of clarithromycin on the clinical pharmacokinetics of rosuvastatin, pravastatin and fluvastatin.

All of these findings provided us with the opportunity to investigate the interaction between clarithromycin and statins not metabolized by CYP3A4 in the context of frequency of serious adverse events.<sup>17</sup> We compared the

risk of statin-associated adverse events (rhabdomyolysis, acute kidney injury, hyperkalemia and death) when rosuvastatin, pravastatin or fluvastatin is co-prescribed with clarithromycin (a macrolide antibiotic and inhibitor of OATPs<sup>18–20</sup>) versus azithromycin (a macrolide antibiotic that does not inhibit OATPs<sup>10</sup>).

## Methods

### Study design and setting

We conducted a population-based, retrospective cohort study at the Institute for Clinical Evaluative Sciences (ICES) according to an established protocol approved by the Research Ethics Board at the Sunnybrook Health Sciences Centre (Toronto, Canada). Data on adults 66 years of age and older between June 2002 and March 2013 were obtained and analyzed through linked health care databases in the province of Ontario. The province has about 13.6 million residents, 16% of whom are 65 years or older and have universal coverage for prescription drugs.<sup>21</sup> We followed guidelines for observational studies for the reporting of this study.<sup>22</sup>

### Data sources

We ascertained patient characteristics, drug use, covariate information and outcome data using records from 5 large administrative databases housed at ICES. The Ontario Registered Persons Database contains demographic and vital status information for all residents of the province who have ever been issued a health card. We used the database of the Ontario Drug Benefit Program to identify prescription drug use. The database contains accurate records (error rate < 1%) for all outpatient prescriptions dispensed to people 65 years or older.<sup>23</sup> We obtained detailed diagnostic and procedural information on all hospital admissions in the province, including up to 25 unique diagnostic codes assigned per admission, from the Canadian Institute for Health Information's Discharge Abstract Database. We collected covariate information from the Ontario Health Insurance Plan (OHIP) database. This database includes fee-for-service health claims for inpatient and outpatient physician services. Finally, we obtained information on antibiotic prescribers from the ICES Physician Database, which comprises data from the Corporate Provider Database, the Ontario Physician Human Resource Data Centre database and the OHIP database of physician billings. All of the data were linked anonymously with the use of encrypted health card numbers, a method that has been used previously for studies on adverse drug events, health outcomes and health services.<sup>24–29</sup>

All variables used in this study were complete except for neighbourhood income (missing

for 0.25% of patients) and prescriber specialty (missing for 13.21%). We used the International Classification of Diseases, 9th revision (ICD-9) codes before April 2002 and ICD-10 codes after Apr. 1, 2002, to assess baseline comorbidities in the 5 years before the co-prescriptions (Appendix 1, available at [www.cmaj.ca/lookup/suppl/doi:10.1503/cmaj.140950/-/DC1](http://www.cmaj.ca/lookup/suppl/doi:10.1503/cmaj.140950/-/DC1)). We used ICD-10 codes to ascertain outcomes (Appendix 2, available at [www.cmaj.ca/lookup/suppl/doi:10.1503/cmaj.140950/-/DC1](http://www.cmaj.ca/lookup/suppl/doi:10.1503/cmaj.140950/-/DC1)), because all events would have occurred after the implementation of this coding system.

### Study population

Our cohort comprised all older adults in Ontario who had continuous prescriptions for statins not metabolized by CYP3A4 (study statins: rosuvastatin, fluvastatin and pravastatin) and who received a co-prescription for either clarithromycin or azithromycin (control group) between June 2002 and March 2013. Azithromycin is an antibiotic with indications similar to those of clarithromycin, but it does not substantially inhibit CYP3A4 or OATP1B1 and OATP1B3.<sup>10,30,31</sup> In a previous study of provincial data, we showed that clarithromycin and azithromycin have similar indications, clinical use patterns and rates of adverse events when used independently.<sup>32</sup> Thus, we felt that the comparison of outcomes among older adults prescribed these antibiotics would serve as a useful model for studying drug interactions in routine clinical practice.

The date of the first co-prescription of a study antibiotic served as the index date. We confirmed that all patients in the study were continuously taking a study statin ( $\geq 2$  prescriptions in the 210 days before the index date) and that the most recent statin prescription covered the index date. This ensured that a study statin and macrolide antibiotic were co-prescribed.

We excluded patients if they met any of the following criteria: (a) they were in their first year of eligibility for provincial coverage of prescription drugs (aged 65 years), to avoid incomplete medication records; (b) they received a prescription for more than one type of antibiotic or statin on the index date, to compare mutually exclusive groups; (c) they received any antibiotic in the 30 days before the index date, to ensure new antibiotic use and to exclude patients with severe infections that failed to respond to initial antibiotic treatment; (d) they had one or more prescriptions for a non-study statin (including CYP3A4-metabolized statins) in the 180 days before antibiotic prescription, to ensure that any observed adverse events were associated with the study drugs; (e) they were discharged from hospital in the 2 days before their

index date, to ensure inclusion of new outpatient antibiotic prescriptions (in Ontario, patients continuing antibiotic treatment started in hospital have their outpatient antibiotic prescription dispensed on the same day or the day after discharge); or (f) they had a prescription for a potent CYP3A4 inhibitor (protease inhibitor, chloramphenicol or antifungal) dispensed in the 6 months before the index date, to exclude drugs that are often also potent inhibitors of OATPs.<sup>33,34</sup>

A patient could be entered into the cohort only once. We restricted analysis to the first prescription of a study antibiotic that the patient received in follow-up (subsequent prescriptions were not considered).

### Outcome measures

We followed patients for 30 days after the index date to assess outcomes. We examined the 4 outcomes specified in a previous study of statin toxicity from drug interactions:<sup>24</sup> hospital admission because of rhabdomyolysis, admission because of acute kidney injury, admission because of hyperkalemia, and all-cause mortality (the diagnostic codes are shown in Appendix 2). Patients with multiple hospital admission codes were accounted for in the assessment of each type of admission.

In Ontario, we have previously observed that a hospital diagnostic code for rhabdomyolysis identifies patients with a median peak creatine kinase level of 1835 (interquartile range [IQR] 680 to 3986) U/L, whereas the absence of such a code

indicates patients without a creatine kinase level or with a measured median level of 130 (IQR 60 to 368) U/L (unpublished data). Similarly, a hospital diagnostic code for acute kidney injury identifies a median absolute increase in serum creatinine of 98 (IQR 43 to 200)  $\mu\text{mol/L}$  from the most recent value before admission, and the absence of such a code represents a median increase of 6 (IQR  $-4$  to 20)  $\mu\text{mol/L}$ .<sup>35</sup> A code for hyperkalemia identifies a median serum potassium concentration of 6.0 (IQR 5.1 to 6.7) mmol/L, and its absence defines a median concentration of 4.1 (IQR 3.8 to 4.5) mmol/L.<sup>36</sup> These validation studies showed a spectrum bias in coding: as a condition becomes more extreme, a code is more likely to be present for that diagnosis. The overall incidence is therefore underestimated, particularly for milder forms of the conditions. For example, the incidence of acute kidney injury can be underestimated up to five-fold when assessed by diagnostic code, as compared with laboratory values.<sup>35</sup>

### Statistical analysis

We compared baseline characteristics between statin users co-prescribed clarithromycin and those co-prescribed azithromycin using standardized differences.<sup>37,38</sup> This metric describes differences between group means relative to the pooled standard deviation and is considered a clinically meaningful difference if greater than 10%. We expressed the risk of an outcome in both relative and absolute terms, and we used multivariable logistic regression analyses to estimate odds ratios and 95% confidence intervals (95% CIs). We adjusted for 15 potential confounding variables based on clinical relevance: age, sex, year of cohort entry; baseline evidence of chronic kidney disease, stroke or transient ischemic attack, peripheral vascular disease, coronary artery disease, congestive heart failure, major cancer and diabetes; baseline use, in the 120 days before the index date, of  $\beta$ -blockers, calcium-channel blockers, diuretics, angiotensin-converting-enzyme inhibitors or angiotensin II receptor blockers, and nonsteroidal anti-inflammatory drugs.

In all outcome analyses, we interpreted 2-tailed *p* values of less than 0.05 as statistically significant. We interpreted odds ratios as relative risks (RR; appropriate given the incidences observed). We conducted all statistical analyses using SAS version 9.3 (SAS Institute).

### Results

We identified 104 041 people who met the eligibility criteria, with almost equal numbers in the clarithromycin (*n* = 51 523) and azithromycin (*n* = 52 518) groups (Figure 1). The most commonly

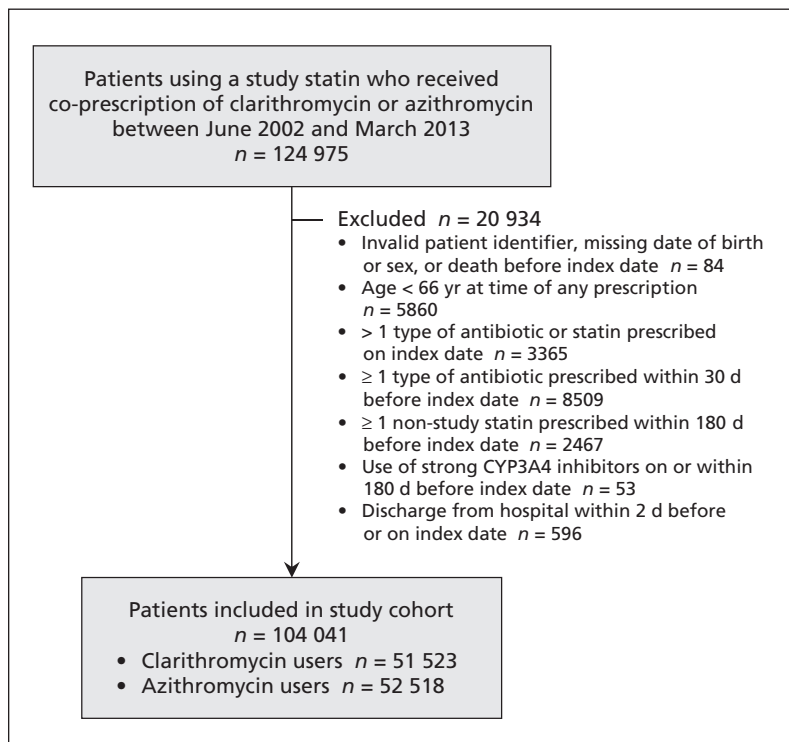


Figure 1: Selection of the study cohort.

prescribed statin was rosuvastatin (76%), followed by pravastatin (21%) and fluvastatin (3%). Baseline characteristics of the 2 groups were similar, including type and dose of statin used (Table 1). The median dosage was 1000 mg/d for 10 days for clarithromycin prescriptions and 300 mg/d for 5 days for azithromycin prescriptions, which was consistent with drug-prescribing references.<sup>41</sup> Co-prescriptions of study statins and clarithromycin continued to occur in each year of the study period, including the most recent years of data accrual (Table 1).

Patient outcomes are presented in Table 2. Co-prescription of clarithromycin with a study statin was associated with a higher risk of most of the outcomes: hospital admission with acute kidney injury (RR 1.46, 95% CI 1.16 to 1.84), hospital admission with hyperkalemia (RR 1.87, 95% CI 1.05 to 3.32) and all-cause mortality (RR 1.32, 95% CI 1.07 to 1.62). The number of admissions with rhabdomyolysis was limited (clarithromycin 13, azithromycin 6); the confidence intervals around the estimate of this adverse event were wide, and the increase in relative risk was not statistically significant (RR 2.21, 95% CI 0.84 to 5.81). All of the results were consistent after adjustment for the confounders (Table 2). The absolute increase in risk for each outcome was small. Even under the assumption that the diagnostic codes underestimated the incidence by five-fold, the absolute increase in risk for each outcome would remain less than 1%.

## Interpretation

In this population-based cohort study, we observed that co-prescription of clarithromycin versus azithromycin in older adults taking a statin not metabolized by CYP3A4 was associated with a modest but statistically significant increase in the absolute risk of hospital admission with acute kidney injury or hyperkalemia and in the absolute risk of all-cause mortality. The population impact of this preventable drug-drug interaction can be considered in the context of the high frequency of clarithromycin and statin co-prescription (rosuvastatin, or Crestor, was the second most commonly dispensed drug in Canada in 2010<sup>42</sup>).

The main mechanism underlying interactions between macrolide antibiotics and statins is often ascribed to the inhibition of the drug-metabolizing enzyme CYP3A4.<sup>43-45</sup> For this reason, the US Food and Drug Administration (FDA) currently warns against the co-administration of strong CYP3A4 inhibitors, including clarithromycin, with CYP3A4-metabolized

**Table 1 (part 1 of 2):** Baseline characteristics of patients co-prescribed clarithromycin or azithromycin with a statin not metabolized by CYP3A4

Characteristic	Antibiotic; no. (%) or mean $\pm$ SD		Standardized difference, %*
	Clarithromycin <i>n</i> = 51523	Azithromycin <i>n</i> = 52 518	
<b>General</b>			
Age, yr	73.5 $\pm$ 6.3	73.8 $\pm$ 6.4	4
Sex, female	27 756 (53.9)	28 386 (54.1)	0
Income quintile†			
1 (lowest)	10 708 (20.8)	10 385 (19.8)	3
2	11 414 (22.2)	11 214 (21.4)	2
3	10 312 (20.0)	10 624 (20.2)	1
4	9 783 (19.0)	10 408 (19.8)	2
5 (highest)	9 180 (17.8)	9 750 (18.6)	2
Rural residence	6 502 (12.6)	6 522 (12.4)	1
Residence in long-term care facility	1 204 (2.3)	896 (1.7)	4
Year of cohort entry‡			
2002–2003	3 911 (7.6)	3 598 (6.9)	3
2004–2005	6 266 (12.2)	6 175 (11.8)	1
2006–2007	7 539 (14.6)	6 913 (13.2)	4
2008–2009	11 006 (21.4)	10 423 (19.8)	4
2010–2011	15 367 (29.8)	15 421 (29.4)	1
2012	7 434 (14.4)	9 948 (18.9)	12
Antibiotic prescriber			
Family physician	43 293 (84.0)	43 599 (83.0)	3
Internist	269 (0.5)	284 (0.5)	0
Surgeon	200 (0.4)	51 (0.1)	6
Other	1 552 (3.0)	1 704 (3.2)	1
Missing data	6 209 (12.1)	6 880 (13.1)	3
Charlson Comorbidity Index§			
0	38 669 (75.1)	38 870 (74.0)	2
1	5 556 (10.8)	5 855 (11.1)	1
2	3 680 (7.1)	3 914 (7.5)	1
$\geq$ 3	3 618 (7.0)	3 879 (7.4)	1
<b>Comorbidity¶</b>			
Major cancer**	6 688 (13.0)	6 919 (13.2)	1
Chronic kidney disease	4 292 (8.3)	4 660 (8.9)	2
Coronary artery disease††	19 163 (37.2)	20 903 (39.8)	5
Diabetes mellitus‡‡	14 838 (28.8)	15 116 (28.8)	0
Heart failure	6 423 (12.5)	7 023 (13.4)	3
Peripheral vascular disease	1 067 (2.1)	1 107 (2.1)	0
Stroke or TIA	1 323 (2.6)	1 567 (3.0)	3
<b>Medication use§§</b>			
ACE inhibitor	20 106 (39.0)	20 696 (39.4)	1
ARB	11 930 (23.2)	11 585 (22.1)	3
$\beta$ -Blocker	16 357 (31.7)	17 572 (33.5)	4
Potassium-sparing diuretic	2 395 (4.6)	2 487 (4.7)	0
Loop diuretic	5 242 (10.2)	5 677 (10.8)	2
NSAID (excluding ASA)	8 978 (17.4)	8 911 (17.0)	1
Thiazide diuretic	9 243 (17.9)	9 782 (18.6)	2
Any diuretic	15 771 (30.6)	16 655 (31.7)	2
$\beta_2$ -Agonist	8 905 (17.3)	8 378 (16.0)	4
Anticholinergic	4 178 (8.1)	3 743 (7.1)	4
Corticosteroid	4 083 (7.9)	3 917 (7.5)	2

continued



**Table 1 (part 2 of 2):** Baseline characteristics of patients co-prescribed clarithromycin or azithromycin with a statin not metabolized by CYP3A4

Characteristic	Antibiotic; no. (%) or mean $\pm$ SD		Standardized difference, %*
	Clarithromycin n = 51523	Azithromycin n = 52 518	
<b>Health care use in prior year</b>			
Hospital admissions			
0	44 677 (86.7)	45 184 (86.0)	2
1	5 021 (9.7)	5 272 (10.0)	1
2	1 211 (2.4)	1 398 (2.7)	2
$\geq 3$	614 (1.2)	664 (1.3)	1
Emergency department visits			
0	34 922 (67.8)	34 983 (66.6)	2
1	9 554 (18.5)	9 979 (19.0)	1
2	3 689 (7.2)	3 825 (7.3)	0
$\geq 3$	3 358 (6.5)	3 731 (7.1)	2
Family physician visits			
0	892 (1.7)	1 090 (2.1)	3
1–2	3 195 (6.2)	3 135 (6.0)	1
3–4	6 438 (12.5)	6 368 (12.1)	1
5–6	8 419 (16.3)	8 430 (16.1)	1
7–8	7 990 (15.5)	7 726 (14.7)	2
9–10	6 148 (11.9)	6 119 (11.7)	1
$\geq 11$	18 441 (35.8)	19 650 (37.4)	3
Cardiologist visits			
0	29 097 (56.5)	28 251 (53.8)	5
1	9 656 (18.7)	10 003 (19.0)	1
2	4 748 (9.2)	5 086 (9.7)	2
$\geq 3$	8 022 (15.6)	9 178 (17.5)	5
<b>Procedure</b>			
Echocardiography	25 575 (49.6)	27 682 (52.7)	6
Holter monitoring	11 082 (21.5)	12 670 (24.1)	6
Cardiac stress test	23 822 (46.2)	25 262 (48.1)	4
Carotid endarterectomy	263 (0.5)	317 (0.6)	1
Cardiac catheterization	5 558 (10.8)	6 304 (12.0)	4
Carotid ultrasound	10 560 (20.5)	11 471 (21.8)	3
Chest radiograph	40 573 (78.7)	41 189 (78.4)	1
Pulmonary function test	16 293 (31.6)	16 667 (31.7)	0
<b>Statin use</b>			
Rosuvastatin	39 082 (75.9)	40 460 (77.0)	3
Pravastatin	11 172 (21.7)	10 931 (20.8)	2
Fluvastatin	1 269 (2.5)	1 127 (2.1)	2
<b>Statin daily dose, mg</b>			
Rosuvastatin	12.8 $\pm$ 7.8	12.8 $\pm$ 7.8	1
Pravastatin	26.0 $\pm$ 12.2	26.2 $\pm$ 12.2	2
Fluvastatin	36.9 $\pm$ 19.5	37.9 $\pm$ 19.6	5
Note: ACE = angiotensin-converting-enzyme, ARB = angiotensin II receptor blocker, ASA = acetylsalicylic acid, CYP3A4 = cytochrome P450 3A4, NSAID = non-steroidal anti-inflammatory drug, SD = standard deviation, TIA = transient ischemic attack.			
*Standardized differences are less sensitive to sample size than traditional hypothesis tests. They provide a measure of the difference between groups divided by the pooled standard deviation; a value greater than 10% is interpreted as a meaningful difference between the groups.			
†Income was categorized into quintiles of average neighbourhood income on the index date (co-prescription of antibiotic).			
‡The date of cohort entry is also referred to as the index date.			
§Charlson Comorbidity Index <sup>39,40</sup> was calculated using 5 years of data on hospital admissions; patients who had no admissions were given a score of 0.			
¶Assessed using administrative database codes for the 5 years before the index date.			
**Cancers of the esophagus, lung, bowel, liver, pancreas, breast, male or female reproductive organs, as well as leukemia and lymphomas.			
††Includes angina and coronary artery revascularization.			
‡‡Assessed using prescriptions for antidiabetic medications.			
§§Within the 120 days before the index date.			

statins.<sup>46</sup> However, the inhibition of CYP3A4 cannot explain the increased risk of statin toxicity observed in our study, because we examined interactions with statins not metabolized by CYP3A4.

A growing body of evidence highlights the role of transporter-mediated mechanisms in such interactions, notably the inhibition of human OATPs.<sup>19,47–50</sup> Pharmacogenetics research as well as in vitro and clinical drug experiments have shown that reduced activity of OATP1B1 and OATP1B3 is associated with increased systemic exposure of non-CYP3A4-metabolized statins.<sup>10,14–16,51,52</sup> In addition, we now know that statins are substrates of a liver-specific bile acid transporter known as sodium taurocholate co-transporting polypeptide (NTCP). Available data suggest that nearly 30% of statin transport into the liver may be mediated by this polypeptide. Thus, observed in vivo inhibitory effects may reflect not only the inhibition of OATP1B1 and OATP1B3, but also the inhibition of NTCP.<sup>53,54</sup> However, the OATPs are still considered to be the key rate-limiting transporters that govern the hepatic uptake of statins.<sup>55</sup>

### Limitations

Our study's findings must be interpreted in the context of its limitations. Prospective collection of data and independent adjudication of outcomes would be the preferred methodology. However, conduct of such a study might not be possible if physicians were required to intervene after learning about concurrent use of drugs with the potential to interact. The increases in absolute risk are underestimated owing to limited sensitivity of the diagnostic codes. However, we preferentially captured the most severe forms of the conditions (i.e., requiring hospital admission), which made these findings of particular interest to clinicians and policy decision-makers. Our findings can be generalized only to older adults, because younger patients are often healthier and may not be as susceptible to drug–drug interactions.<sup>56</sup> As with all observational studies, we may have failed to account for important unmeasured confounding variables. Given the complex nature of drug–drug interactions, we also cannot be entirely certain that the observed associations were causal or attributable to the mechanisms we suggest. This limitation may be offset by the comparable usage patterns and risk of adverse events between clarithromycin and azithromycin when used independently, although we did observe a small absolute difference in all-cause mortality with clarithromycin compared with azithromycin in the absence of potentially interacting drugs.<sup>32</sup>

**Table 2:** Outcomes within 30 days after co-prescription of clarithromycin or azithromycin with a statin not metabolized by CYP3A4

Outcome	No. of events (%)*		Absolute risk difference (95% CI), %	Relative risk (95% CI)	
	Clarithromycin n = 51 523	Azithromycin† n = 52 518		Unadjusted	Adjusted‡
Hospital admission with rhabdomyolysis	13 (0.03)	6 (0.01)	0.02 (−0.03 to 0.03)	2.21 (0.84 to 5.81)	2.27 (0.86 to 5.96)
Hospital admission with acute kidney injury	175 (0.34)	122 (0.23)	0.11 (0.04 to 0.17)	1.46 (1.16 to 1.84)	1.65 (1.31 to 2.09)
Hospital admission with hyperkalemia	33 (0.06)	18 (0.03)	0.03 (0.00 to 0.06)	1.87 (1.05 to 3.32)	2.17 (1.22 to 3.86)
All-cause mortality	200 (0.39)	155 (0.30)	0.09 (0.02 to 0.16)	1.32 (1.07 to 1.62)	1.43 (1.15 to 1.76)

Note: CI = confidence interval, CYP3A4 = cytochrome P450 3A4.  
 \*The number of events (and the proportion of patients who experienced an event) for all outcomes except all-cause mortality were assessed with the use of hospital diagnostic codes. This underestimates the true event rate, because these codes have high specificity but low sensitivity.  
 †Patients prescribed azithromycin served as the referent group.  
 ‡Adjusted for 15 covariates (age, sex, year of cohort entry; baseline evidence of chronic kidney disease, stroke or transient ischemic attack, peripheral vascular disease, coronary artery disease, congestive heart failure, major cancer and diabetes; baseline use, in the 120 days before the index date, of β-blockers, calcium-channel blockers, diuretics, angiotensin-converting-enzyme inhibitors or angiotensin II receptor blockers, and nonsteroidal anti-inflammatory drugs) using logistic regression model (see Methods section). To reduce concerns about model over-fitting, we repeated the analysis adjusting for only age and sex; the results did not differ.

## Conclusion

Co-prescription of clarithromycin and a statin not metabolized by CYP3A4 was associated with a modest increase in the number of deaths and hospital admissions because of adverse events that may reflect statin toxicity among older adults. Although the US FDA recommends the use of non-CYP3A4-metabolized statins as a safer alternative when taken concurrently with CYP3A4 inhibitors,<sup>9,50,57</sup> our findings indicate that unintended adverse events may still occur, possibly because of additional mechanisms of drug interactions independent of the CYP3A4 pathway. To prevent toxicity, the use of azithromycin or another antibiotic that does not interact with statins can be considered.

## References

- Ioannidis JP. More than a billion people taking statins? Potential implications of the new cardiovascular guidelines. *JAMA* 2014; 311:463-4.
- Baigent C, Blackwell L, Emberson J, et al.; Cholesterol Treatment Trialists' (CTT) Collaboration. Efficacy and safety of more intensive lowering of LDL cholesterol: a meta-analysis of data from 170 000 participants in 26 randomised trials. *Lancet* 2010; 376:1670-81.
- Cohen JD, Brinton E, Ito M, et al. Understanding Statin Use in America and Gaps in Patient Education (USAGE): an Internet-based survey of 10 138 current and former statin users. *J Clin Lipidol* 2012;6:208-15.
- Trieu J, Emmett L, Perera C, et al. Rhabdomyolysis resulting from interaction of simvastatin and clarithromycin demonstrated by Tc-99m MDP scintigraphy. *Clin Nucl Med* 2004;29:803-4.
- Campbell G, Jayakumar U, Mccracken S, et al. A cautionary tale: delayed onset rhabdomyolysis due to erythromycin/simvastatin interaction. *Age Ageing* 2007;36:597.
- Mah Ming JB, Gill M. Case report: drug-induced rhabdomyolysis after concomitant use of clarithromycin, atorvastatin, and lopinavir/ritonavir in a patient with HIV. *AIDS Patient Care STDS* 2003;17:207-10.
- Mancini GB, Baker S, Bergeron J, et al. Diagnosis, prevention, and management of statin adverse effects and intolerance: proceedings of a Canadian Working Group Consensus Conference. *Can J Cardiol* 2011;27:635-62.
- Dresser GK, Spence J, Bailey D. Pharmacokinetic-pharmacodynamic consequences and clinical relevance of cytochrome P450 3A4 inhibition. *Clin Pharmacokinet* 2000;38:41-57.
- Kellick KA, Bottorff M, Toth P. A clinician's guide to statin drug-drug interactions. *J Clin Lipidol* 2014;8:S30-46.
- Seithel A, Eberl S, Singer K, et al. The influence of macrolide antibiotics on the uptake of organic anions and drugs mediated by OATP1B1 and OATP1B3. *Drug Metab Dispos* 2007;35:779-86.
- Niemi M. Role of OATP transporters in the disposition of drugs. *Pharmacogenomics* 2007;8:787-802.
- DeGorter MK, Xia C, Yang J, et al. Drug transporters in drug efficacy and toxicity. *Annu Rev Pharmacol Toxicol* 2012;52:249-73.
- Higgins JW, Bao J, Ke A, et al. Utility of OATP1A/1B-knockout and OATP1B1/3-humanized mice in the study of OATP-mediated pharmacokinetics and tissue distribution: case studies with pravastatin, atorvastatin, simvastatin, and carboxydichlorofluorescein. *Drug Metab Dispos* 2014;42:182-92.
- Choi JH, Lee MG, Cho JY, et al. Influence of OATP1B1 genotype on the pharmacokinetics of rosuvastatin in Koreans. *Clin Pharmacol Ther* 2008;83:251-7.
- Niemi M, Schaeffeler E, Lang T, et al. High plasma pravastatin concentrations are associated with single nucleotide polymorphisms and haplotypes of organic anion transporting polypeptide-C (OATP-C, SLCO1B1). *Pharmacogenetics* 2004;14:429-40.
- Nishizato Y, Ieiri I, Suzuki H, et al. Polymorphisms of OATP-C (SLC21A6) and OAT3 (SLC22A8) genes: consequences for pravastatin pharmacokinetics. *Clin Pharmacol Ther* 2003;73:554-65.
- Ming EE, Davidson M, Hi S, et al. Concomitant use of statins and CYP3A4 inhibitors in administrative claims and electronic medical records databases. *J Clin Lipidol* 2008;2:453-63.
- Gelissen IC, Mclachlan A. The pharmacogenomics of statins. *Pharmacol Res* 2014;88:99-106.
- Kalliokoski A, Niemi M. Impact of OATP transporters on pharmacokinetics. *Br J Pharmacol* 2009;158:693-705.
- Hanna I, Pelis R. Drug transporters in drug interactions and disposition. In: Zhang D, Surapaneni S, editors. *ADME — enabling technologies in drug design and development*. Hoboken (NJ): John Wiley & Sons; 2012:29.
- Population by sex and age group, by province and territory (number, both sexes), 2014 [Table 051-0001]. Ottawa: Statistics Canada. Available: [www.statcan.gc.ca/tables-tableaux/sum-som/101/cst01/demo31a-eng.htm](http://www.statcan.gc.ca/tables-tableaux/sum-som/101/cst01/demo31a-eng.htm) (modified 2014 Sept. 26; accessed 2014 Feb. 14).
- von Elm E, Altman D, Egger M, et al. The Strengthening the Reporting of Observational Studies in Epidemiology (STROBE) statement: guidelines for reporting observational studies. *Prev Med* 2007;45:247-51.
- Levy AR, O'Brien B, Sellors C, et al. Coding accuracy of administrative drug claims in the Ontario Drug Benefit database. *Can J Clin Pharmacol* 2003;10:67-71.
- Patel AM, Shariff S, Bailey D, et al. Statin toxicity from macro-



- lide antibiotic coprescription: a population based cohort study. *Ann Intern Med* 2013;158:869-76.
25. Zhao YY, Weir M, Manno M, et al. New fibrate use and acute renal outcomes in elderly adults: a population-based study. *Ann Intern Med* 2012;156:560-9.
  26. Shih AW, Weir M, Clemens K, et al. Oral bisphosphonate use in the elderly is not associated with acute kidney injury. *Kidney Int* 2012;82:903-8.
  27. Molnar AO, Coca S, Devereaux P, et al. Statin use associates with a lower incidence of acute kidney injury after major elective surgery. *J Am Soc Nephrol* 2011;22:939-46.
  28. Jain AK, Cuerden M, Mcleod I, et al. Reporting of the estimated glomerular filtration rate was associated with increased use of angiotensin-converting enzyme inhibitors and angiotensin-II receptor blockers in CKD. *Kidney Int* 2012;81:1248-53.
  29. Gandhi S, Fleet J, Bailey D, et al. Calcium-channel blocker — clarithromycin drug interactions and acute kidney injury. *JAMA* 2013;310:2544-53.
  30. Pai MP, Graci D, Amsden G. Macrolide drug interactions: an update. *Ann Pharmacother* 2000;34:495-513.
  31. Westphal JF. Macrolide-induced clinically relevant drug interactions with cytochrome P-450A (CYP) 3A4: an update focused on clarithromycin, azithromycin and dirithromycin. *Br J Clin Pharmacol* 2000;50:285-95.
  32. Fleet JL, Shariff S, Bailey D, et al. Comparing two types of macrolide antibiotics for the purpose of assessing population-based drug interactions. *BMJ Open* 2013;3:pii:e002857.
  33. CYP3A and P-gp inhibitors and their relative potency [Table 14]. In: *Drug development and drug interactions: table of substrates, inhibitors and inducers*. Silver Spring (MD): Food and Drug Administration; 2011. Available: [www.fda.gov/drugs/developmentapprovalprocess/developmentresources/druginteractionslabeling/ucm093664.htm#potency](http://www.fda.gov/drugs/developmentapprovalprocess/developmentresources/druginteractionslabeling/ucm093664.htm#potency) (accessed 2014 Jan. 24).
  34. Hartkoorn RC, San Kwan W, Shallcross V, et al. HIV protease inhibitors are substrates for OATP1A2, OATP1B1 and OATP1B3 and lopinavir plasma concentrations are influenced by SLCO1B1 polymorphisms. *Pharmacogenet Genomics* 2010;20:112-20.
  35. Hwang YJ, Shariff S, Gandhi S, et al. Validity of the *International Classification of Diseases, Tenth Revision* code for acute kidney injury in elderly patients at presentation to the emergency department and at hospital admission. *BMJ Open* 2012;2:e001821.
  36. Fleet JL, Shariff S, Gandhi S, et al. Validity of the *International Classification of Diseases 10th revision* code for hyperkalaemia in elderly patients at presentation to an emergency department and at hospital admission. *BMJ Open* 2012;2:e002011.
  37. Jha P, Deboer D, Sykora K, et al. Characteristics and mortality outcomes of thrombolysis trial participants and nonparticipants: a population-based comparison. *J Am Coll Cardiol* 1996;27:1335-42.
  38. Mamdani M, Sykora K, Li P, et al. Reader's guide to critical appraisal of cohort studies: 2. Assessing potential for confounding. *BMJ* 2005;330:960-2.
  39. Charlson ME, Pompei P, Ales K, et al. A new method of classifying prognostic comorbidity in longitudinal studies: development and validation. *J Chronic Dis* 1987;40:373-83.
  40. Quan H, Sundararajan V, Halfon P, et al. Coding algorithms for defining comorbidities in ICD-9-CM and ICD-10 administrative data. *Med Care* 2005;43:1130-9.
  41. Repchinsky C, Welbanks L, Bisson R. *Compendium of pharmaceuticals and specialties*. Ottawa: Canadian Pharmacists Association; 2002.
  42. Pharmaceutical trends: top 50 dispensed medications in Canada. Kanata (ON): IMS Health 2010. Available: [www.imshealth.com/deployedfiles/ims/Global/North%20America/Canada/Home%20Page%20Content/Pharma%20Trends/Top50Dispensed\\_En\\_11.pdf](http://www.imshealth.com/deployedfiles/ims/Global/North%20America/Canada/Home%20Page%20Content/Pharma%20Trends/Top50Dispensed_En_11.pdf) (accessed 2014 Jan. 24).
  43. Zhou SF. Drugs behave as substrates, inhibitors and inducers of human cytochrome P450 3A4. *Curr Drug Metab* 2008;9:310-22.
  44. Ito K, Ogihara K, Kanamitsu S, et al. Prediction of the in vivo interaction between midazolam and macrolides based on in vitro studies using human liver microsomes. *Drug Metab Dispos* 2003;31:945-54.
  45. Polasek TM, Miners J. Quantitative prediction of macrolide drug-drug interaction potential from in vitro studies using testosterone as the human cytochrome P4503A substrate. *Eur J Clin Pharmacol* 2006;62:203-8.
  46. FDA Drug Safety Communication: Interactions between certain HIV or hepatitis C drugs and cholesterol-lowering statin drugs can increase the risk for muscle injury. Silver Spring (MD): US Food and Drug Administration; 2012. Available: [www.fda.gov/Drugs/DrugSafety/ucm293877.htm](http://www.fda.gov/Drugs/DrugSafety/ucm293877.htm) (accessed 2014 Dec. 1).
  47. Fahrmayr C, Fromm M, König J. Hepatic OATP and OCT uptake transporters: their role for drug-drug interactions and pharmacogenetic aspects. *Drug Metab Rev* 2010;42:380-401.
  48. Kindla J, Fromm M, König J. In vitro evidence for the role of OATP and OCT uptake transporters in drug-drug interactions. *Expert Opin Drug Metab Toxicol* 2009;5:489-500.
  49. Ho RH, Kim R. Transporters and drug therapy: implications for drug disposition and disease. *Clin Pharmacol Ther* 2005;78:260-77.
  50. Neuvonen PJ, Niemi M, Backman J. Drug interactions with lipid-lowering drugs: mechanisms and clinical relevance. *Clin Pharmacol Ther* 2006;80:565-81.
  51. Simonson SG, Raza A, Martin P, et al. Rosuvastatin pharmacokinetics in heart transplant recipients administered an antirejection regimen including cyclosporine. *Clin Pharmacol Ther* 2004;76:167-77.
  52. Park JW, Siekmeier R, Latke P, et al. Pharmacokinetics and pharmacodynamics of fluvastatin in heart transplant recipients taking cyclosporine A. *J Cardiovasc Pharmacol Ther* 2001;6:351-61.
  53. Ho RH, Tirona R, Leake B, et al. Drug and bile acid transporters in rosuvastatin hepatic uptake: function, expression, and pharmacogenetics. *Gastroenterology* 2006;130:1793-806.
  54. Bi YA, Qiu X, Rotter C, et al. Quantitative assessment of the contribution of sodium-dependent taurocholate co-transporting polypeptide (NTCP) to the hepatic uptake of rosuvastatin, pitavastatin and fluvastatin. *Biopharm Drug Dispos* 2013;34:452-61.
  55. Shitara Y, Maeda K, Ikejiri K, et al. Clinical significance of organic anion transporting polypeptides (OATPs) in drug disposition: their roles in hepatic clearance and intestinal absorption. *Biopharm Drug Dispos* 2013;34:45-78.
  56. Higashi T, Shekelle P, Solomon D, et al. The quality of pharmacologic care for vulnerable older patients. *Ann Intern Med* 2004;140:714-20.
  57. *Biaxin Filmtab (clarithromycin tablets, USP), Biaxin XL Filmtab (clarithromycin extended-release tablets), Biaxin Granules (clarithromycin for oral suspension, USP)*. Silver Spring (MD): US Food and Drug Administration; 2013. Available: [www.fda.gov/Safety/MedWatch/SafetyInformation/ucm258816.htm](http://www.fda.gov/Safety/MedWatch/SafetyInformation/ucm258816.htm) (accessed 2014 Dec. 9).

**Affiliations:** Divisions of Nephrology (Li, McArthur, Fleet, Shariff, Gandhi, Dixon, Garg) and Clinical Pharmacology (Kim), Department of Medicine, Western University, London, Ont.; Institute for Clinical Evaluative Sciences (ICES) Western (McArthur, Juurlink, Shariff, Gomes, Dixon, Garg), London, Ont.; Lawson Health Research Institute (Bailey), London Health Sciences Centre, London, Ont.; Sunnybrook Health Sciences Centre (Juurlink), Toronto, Ont.; Li Ka Shing Knowledge Institute (Gomes, Mamdani), St. Michael's Hospital, Toronto, Ont.; Institute of Health Policy, Management and Evaluation (Mamdani), University of Toronto, Toronto, Ont.; Department of Epidemiology and Biostatistics (Gandhi), Western University, London, Ont.

**Contributors:** Daniel Li and Amit Garg drafted the manuscript. Eric McArthur conducted the statistical analysis. All of the authors contributed to the study concept and design and the interpretation of data, revised the manuscript for important intellectual content, approved the final version submitted for publication and agreed to act as guarantors of the work.

**Funding:** This study was supported by ICES Western. ICES is funded by an annual grant from the Ontario Ministry of Health and Long-Term Care. Core funding for ICES Western is provided by the Academic Medical Organization of Southwestern Ontario, the Schulich School of Medicine and Dentistry, Western University, and the Lawson Health Research Institute. This project was conducted with members of the provincial ICES Kidney, Dialysis and Transplantation Research Program, which receives programmatic grants from the Canadian Institutes of Health Research. The opinions, results and conclusions are those of the authors and are independent from the funding sources. No endorsement by ICES, the Academic Medical Organization of Southwestern Ontario, the Schulich School of Medicine and Dentistry, Western University, the Lawson Health Research Institute or the Ontario Ministry of Health and Long-Term Care is intended or should be inferred.