

Washington University School of Medicine

Digital Commons@Becker

2020-Current year OA Pubs

Open Access Publications

6-21-2022

Activation of the rat $\alpha 1\beta 2\epsilon$ GABAA receptor by orthosteric and allosteric agonists

Allison L Germann

Ariel B Burbridge

Spencer R Pierce

Gustav Akk

Follow this and additional works at: https://digitalcommons.wustl.edu/oa_4

Article

Activation of the Rat $\alpha 1\beta 2\epsilon$ GABA_A Receptor by Orthosteric and Allosteric Agonists

Allison L. Germann [†], Ariel B. Burbridge [†], Spencer R. Pierce and Gustav Akk ^{*}

Department of Anesthesiology, Washington University School of Medicine, St. Louis, MO 63110, USA; germanna@wustl.edu (A.L.G.); arielburbridge@wustl.edu (A.B.B.); spencerp@wustl.edu (S.R.P.)

^{*} Correspondence: akk@morpheus.wustl.edu[†] These authors contributed equally to this work.

Abstract: GABA_A receptors are a major contributor to fast inhibitory neurotransmission in the brain. The receptors are activated upon binding the transmitter GABA or allosteric agonists including a number of GABAergic anesthetics and neurosteroids. Functional receptors can be formed by various combinations of the nineteen GABA_A subunits cloned to date. GABA_A receptors containing the ϵ subunit exhibit a significant degree of constitutive activity and have been suggested to be unresponsive to allosteric agents. In this study, we have characterized the functional properties of the rat $\alpha 1\beta 2\epsilon$ GABA_A receptor. We confirm that the $\alpha 1\beta 2\epsilon$ receptor exhibits a higher level of constitutive activity than typical of GABA_A receptors and show that it is inefficaciously activated by the transmitter and the allosteric agonists propofol, pentobarbital, and allopregnanolone. Manipulations intended to alter ϵ subunit expression and receptor stoichiometry were largely without effect on receptor properties including sensitivity to GABA and allosteric agonists. Surprisingly, amino acid substitutions at the conserved 9' and 6' positions in the second transmembrane (TM2) domain in the ϵ subunit did not elicit the expected functional effects of increased constitutive activity and resistance to the channel blocker picrotoxin, respectively. We tested the accessibility of TM2 residues mutated to cysteine using the cysteine-modifying reagent 4-(hydroxymercuri)benzoic acid and found a unique pattern of water-accessible residues in the ϵ subunit.

Keywords: GABA_A receptor; activation; potentiation; orthosteric agonist; allosteric agonist



Citation: Germann, A.L.; Burbridge, A.B.; Pierce, S.R.; Akk, G. Activation of the Rat $\alpha 1\beta 2\epsilon$ GABA_A Receptor by Orthosteric and Allosteric Agonists. *Biomolecules* **2022**, *12*, 868. <https://doi.org/10.3390/biom12070868>

Academic Editor: Giambattista Bonanno

Received: 11 May 2022

Accepted: 17 June 2022

Published: 21 June 2022

Publisher's Note: MDPI stays neutral with regard to jurisdictional claims in published maps and institutional affiliations.



Copyright: © 2022 by the authors. Licensee MDPI, Basel, Switzerland. This article is an open access article distributed under the terms and conditions of the Creative Commons Attribution (CC BY) license (<https://creativecommons.org/licenses/by/4.0/>).

1. Introduction

The γ -aminobutyric acid type A (GABA_A) receptor is an anion-conducting ion channel that plays a major role in mediating ionotropic inhibition in the central nervous system. The receptor is normally gated by the transmitter GABA, but it can also be directly activated or its activity potentiated by taurine, neurosteroids, and a number of sedatives and anesthetics [1]. The GABA_A receptor is a pentameric protein of homologous subunits, most frequently composed of two α subunits, two β subunits, and either a γ or a δ subunit; however, the α and β subunits can also assemble with the ϵ subunit to form a functional receptor with distinct properties [2,3]. The primary structure of the ϵ subunit most closely resembles that of mammalian γ subunits [2–5]. Expression of the ϵ subunit is restricted to a limited number of brain regions, including the amygdala, subthalamic nucleus, thalamus, hypothalamic nuclei, and the hilus of the hippocampus [2,3,5]. There is also evidence of ϵ subunit expression in peripheral tissue including the heart, pancreas, spleen, and prostate [3,4]. The physiological significance of the ϵ subunit and its role in normal brain function are demonstrated by the findings that nonsense and missense mutations in the ϵ subunit are linked to epileptic phenotypes [6].

Co-assembly of the ϵ subunit with α and β subunits produces receptors with a higher than typical level of constitutive activity [7–10]. The ϵ -containing GABA_A receptors also display slow deactivation and desensitization in response to pulses of GABA [11]. The

pharmacological properties of ϵ subunit-containing receptors have not been fully established. Specifically, there has been some controversy regarding sensitivity to GABAergic anesthetics such as pentobarbital and propofol for which some studies [2,12] but not others [3] have reported the lack of a modulatory effect. A later study [13] proposed that differences in the level of ϵ subunit expression, resulting in receptor isoforms with different stoichiometries, may account for these conflicting findings.

The goal of the present study was to quantitatively characterize the activation and potentiation parameters of the $\alpha 1\beta 2\epsilon$ GABA_A receptor. We have found that the $\alpha 1\beta 2\epsilon$ receptor exhibits unusually high constitutive activity and is only weakly activated by the transmitter GABA and the allosteric agonists propofol, pentobarbital, and the neurosteroid allopregnanolone (3 α 5 α P). Changes in the relative amount of ϵ subunit cRNA injected had minimal effect on receptor properties. We also present evidence that the ϵ subunit is unique in how mutations to conserved hydrophobic and polar residues in the second transmembrane (TM2) domain affect activation by GABA and inhibition by picrotoxin.

2. Materials and Methods

2.1. Receptors and Expression

The receptors were expressed in oocytes from *Xenopus laevis* (African clawed frog). The oocytes were purchased from Xenopus 1 (Dexter, MI) as quarter ovaries. The ovaries were digested in a 2% *w/v* (mg/mL) solution of collagenase A in ND96 solution (96 mM NaCl, 2 mM KCl, 1.8 mM CaCl₂, 1 mM MgCl₂, 5 mM HEPES; pH 7.4) with 100 U/mL penicillin and 100 μ g/mL streptomycin while shaking at 150 RPM for 30 to 40 min at 37 °C. The oocytes were then rinsed in ND96 solution and incubated in ND96 solution with supplements (2.5 mM Na pyruvate, 100 U/mL penicillin, 100 μ g/mL streptomycin, 50 μ g/mL gentamycin) at 15 °C for at least 4 h prior to injection of cRNA.

The cDNAs for rat $\alpha 1$ (accession no. NM_183326.2), $\beta 2$ (NM_012957.2), and ϵ subunits (NM_023091.1) were subcloned into the pcDNA3 vector and linearized using either XbaI or ApaI (NEB labs, Ipswich, MA, USA). The cDNA for the ϵ subunit was provided by Dr. M. Garret (University of Bordeaux). The ϵ subunit clone used in this study did not contain the ~400 Pro/Glx repeat in the extracellular domain [4,5,14]. The cDNAs for mutant subunits were synthesized and cloned into pcDNA3 by Twist BioScience (San Francisco, CA, USA). The $\alpha 1$ (V257C) and $\alpha 1$ (T261C) subunits were made on the basis of the human $\alpha 1$ sequence (NM_000806.5) that differs from the rat sequence by one extra amino acid residue in the extracellular domain.

The cRNAs were generated using mMessage mMachine T7 and Poly(A) Tailing Kit (Invitrogen, Waltham, MA, USA). The oocytes were injected with a total of 3 to 12 ng cRNA per oocyte. The cRNA ratio was 1:1:5 (α : β : ϵ) unless specified otherwise. Some experiments were conducted on oocytes injected with 1:1:1 or 1:1:10 (α : β : ϵ) cRNA ratios. Additional control experiments were done on $\alpha 1\beta 2$ receptors (cRNA ratio 1:1), and on wild-type and mutant $\alpha 1\beta 2\gamma 2L$ receptors (1:1:5). The injected oocytes were stored in ND96 with supplements at 15 °C for 2–3 days prior to conducting electrophysiological recordings.

2.2. Electrophysiology

The electrophysiological recordings were conducted at room temperature using standard two-electrode voltage clamp. The borosilicate pipets (G120F-4, Warner Instruments, Hamden, CT, USA) were filled with 3 M KCl. The oocytes were placed in the recording chamber (RC-1Z, Warner Instruments) where they were voltage-clamped at -60 mV. Bath and drug solutions were gravity applied to the recording chamber at a rate of 5–8 mL/min from 30 mL syringes with glass luer slips via Teflon tubing. Solutions were switched manually using a medium pressure 6-port bulkhead valve (IDEX Health and Science, Rohnert Park, CA, USA).

In a typical experiment, the bath solution was applied for 10–20 s to establish baseline activity, followed by a 10–60 s application of a drug solution to assess the peak response, or a 5 min drug application to assess the steady-state response. After each application,

bath solution was applied for 2–5 min to verify recovery to baseline. Since the current responses under several conditions were small (<20 nA), special care was taken to avoid contamination and false-positive responses. For example, test applications of bath or low GABA were done to verify the lack of current response or constant current response from all syringes. This was done as appropriate on each day of recordings.

Current responses were amplified with OC-725C (Warner Instruments, Hamden, CT, USA) or Axoclamp 900A (Molecular Devices, Sunnyvale, CA, USA) amplifiers, digitized with a Digidata 1200 or 1320 series digitizer (Molecular Devices), and stored electronically using pClamp (Molecular Devices).

2.3. Data Analysis

The current traces were analyzed using Clampfit (Molecular Devices) to determine the peak and steady-state amplitudes. If a current response failed to reach steady-state (defined as $\Delta I < 2\%$ during the last 20 s of agonist application), the steady-state current level was estimated by the exponential fitting of the current response.

Descriptive analysis of receptor activation by agonist was done by normalizing the response amplitudes to the peak response to saturating agonist or the combination of GABA + propofol in the same cell, and fitting the normalized responses to Equation (1):

$$Y = Y_{\min} + (Y_{\max} - Y_{\min}) \frac{[\text{agonist}]^{n_H}}{[\text{agonist}]^{n_H} + EC_{50}^{n_H}} \quad (1)$$

where Y_{\min} and Y_{\max} are the low- and high-concentration asymptotes, [agonist] is the concentration of agonist used, EC_{50} is the concentration of agonist producing a half-maximal effect, and n_H is the Hill slope. The fitting parameters were determined for each cell individually and are presented as mean \pm S.D.

Mechanistic analysis of receptor activity was done in the framework of a concerted transition model [15,16]. The raw peak amplitudes were converted to values of probability of being in the active state (P_A) by comparing the peak responses to the agonist to the current response produced by 200 μ M picrotoxin that is expected to block all surface GABA_A receptors (P_A approaches 0), and the peak response to 1 mM GABA + 10 μ M propofol that is expected to activate all surface GABA_A receptors (P_A approaches 1). The approach has been described in detail previously [17].

The P_A data were fitted to the state equation [15,16]:

$$P_A = \frac{1}{1 + L \left[\frac{1 + [\text{agonist}]/K_{R,\text{agonist}}}{1 + [\text{agonist}]/(K_{R,\text{agonist}} c_{\text{agonist}})} \right]^{N_{\text{agonist}}}} \quad (2)$$

where [agonist] is the concentration of agonist, $K_{R,\text{agonist}}$ is the equilibrium dissociation constant for the agonist in the resting receptor, c_{agonist} is the ratio of the equilibrium dissociation constant for the agonist in the active receptor to K_R , and N_{agonist} is the number of agonist binding sites. L is set by the level of background activity and is calculated as $L = (1 - P_{A,\text{background}})/P_{A,\text{background}}$. The fitting parameters were determined for each cell individually, and are presented as mean \pm S.D.

Statistical analyses (*t*-test or ANOVA with Dunnett's or Bonferroni's correction, as appropriate) were done using Excel 2016 (Microsoft, Redmond, WA, USA) or Stata 12.1 (StataCorp, College Station, TX, USA). Curve fitting was done using Origin 2020 (OriginLab Corp., Northampton, MA, USA).

2.4. Cysteine Modification Experiments

To identify the residues lining the ion permeation pathway, we employed the scanning cysteine accessibility method [18,19]. In this approach, residues in the region of interest are individually mutated to cysteine, and the mutant receptors are exposed to a small, charged

sulfhydryl-specific reagent. Covalent labeling of a cysteine residue, and by extension its aqueous accessibility, are deduced from irreversible alteration of receptor function. Cysteine modification was tested on wild-type (control) and cysteine-mutant $\alpha 1\beta 2\gamma 2L$ and $\alpha 1\beta 2\epsilon$ receptors by measuring and comparing the peak amplitudes of responses to 10–20 s applications of saturating GABA before and after exposure to a 1 min application of 100 μM of the cysteine-modifying reagent 4-(hydroxymercuri)benzoic acid sodium salt (pCMB) or pCMB + saturating (10 μM –1 mM) GABA. Prior to exposure to pCMB, up to five applications of saturating GABA were done until a stable (<10% change) response was obtained. All drug applications were followed by at least 4 min washouts in ND96. Modification of the introduced cysteines was determined by comparing the immediate post- and pre-pCMB exposure peak amplitudes of responses to GABA. If a significant difference was observed, then the residue mutated to cysteine was considered to be accessible and labeled by pCMB.

2.5. Materials

The salts and HEPES used in the ND96 solution, GABA, pentobarbital, picrotoxin, and pCMB were purchased from Sigma-Aldrich (St. Louis, MO, USA). Propofol was purchased from MP Biomedicals (Solon, OH, USA). The steroid $3\alpha 5\alpha P$ was purchased from Tocris Bioscience (Bristol, UK).

GABA was dissolved in ND96 to a concentration of 500 mM and stored in aliquots at $-20\text{ }^{\circ}C$. Picrotoxin was dissolved in ND96 to a concentration of 2 mM and stored at $4\text{ }^{\circ}C$. The steroid $3\alpha 5\alpha P$ was dissolved in DMSO at 10–20 mM and stored at room temperature. The stock solution of pentobarbital was made in ND96 to a concentration of 3 mM, pH-adjusted, and stored at room temperature. The stock solution of propofol was made in DMSO at 200 mM and stored at room temperature. The stock solution of pCMB was made in DMSO at 20 mM and stored at room temperature. Dilutions were made daily as needed to a maximal final concentration of DMSO of 0.5%, which has been shown to have no effect on holding current or GABA_A receptor responses to the transmitter [20].

3. Results

3.1. GABA Is a Weak Agonist of the $\alpha 1\beta 2\epsilon$ GABA_A Receptor

We commenced the studies by conducting a basic characterization of activation of the $\alpha 1\beta 2\epsilon$ receptor by the transmitter. The receptors were expressed in the cRNA injection ratio of 1:1:5 ($\alpha 1:\beta 2:\epsilon$). To gain insight into the extent of constitutive activity, we compared responses to GABA and the channel blocker picrotoxin. In 14 cells, the ratio of the response to 200 μM picrotoxin was -0.36 ± 0.20 (mean \pm S.D.) of the response to 1 mM GABA. The ratio is negative to indicate the opposite direction of picrotoxin- and GABA-elicited currents. Sample current traces in the presence of picrotoxin and GABA are given in Figure 1A. The concentrations of picrotoxin and GABA used here are saturating based on previous reports [7,9]. The observed picrotoxin to GABA response ratio is similar to those reported previously [9,11,13].

Next, we compared the peak responses to saturating GABA applied alone or in the presence of 10 μM propofol (Figure 1B) or 1 μM $3\alpha 5\alpha P$. The relative peak responses to 1 mM GABA were 0.64 ± 0.11 ($n = 8$) of the response to 1 mM GABA + 10 μM propofol, and 0.67 ± 0.07 ($n = 5$) of the response to 1 mM GABA + 1 μM $3\alpha 5\alpha P$ ($p > 0.05$ for the ratios; *t*-test). From the GABA to GABA + propofol, and picrotoxin to GABA response ratios, we calculate that the probability of being constitutively active ($P_{A, \text{constitutive}}$) is 0.18 ± 0.08 ($n = 14$), and the peak probability of being in the active state (P_A) in the presence of 1 mM GABA is 0.71 ± 0.09 ($n = 8$). In these calculations, we have assumed that exposure to picrotoxin blocks all constitutively-active surface receptors ($P_A = 0$), and that exposure to GABA + propofol activates all surface receptors ($P_A = 1$) [17].

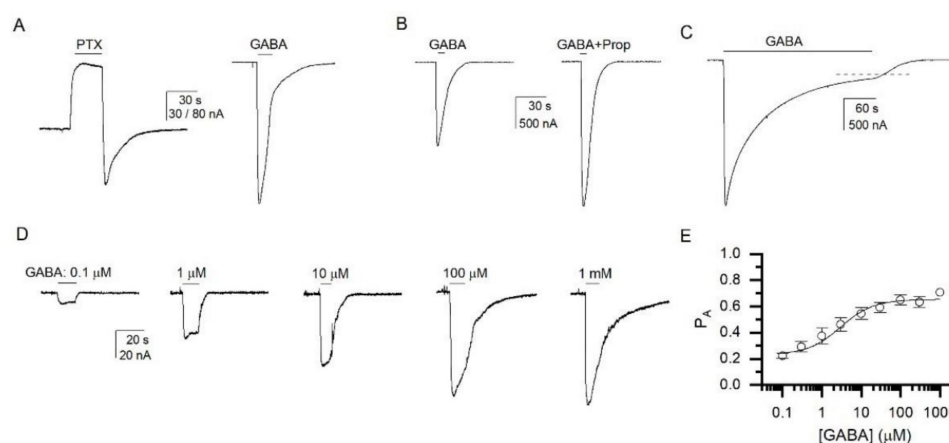


Figure 1. Basic characterization of properties of the $\alpha 1\beta 2\varepsilon$ GABA_A receptor. (A) Sample current responses to 200 μ M picrotoxin (PTX) and 1 mM GABA. (B) Sample current responses to 1 mM GABA and 1 mM GABA + 10 μ M propofol (Prop). In panels (A,B), the paired current responses are from the same cells. (C) Sample current response to a prolonged application of 1 mM GABA. The dashed line shows the fitted level of steady-state current. (D) Sample current responses to 0.1 μ M, 1 μ M, 10 μ M, 100 μ M, and 1 mM GABA. All traces are from the same cell. (E) The GABA concentration-response relationship. The data are expressed in the units of P_A . The data points give means \pm S.D. from seven cells. The curve is calculated using the mean $K_{R,GABA}$ (4.2 μ M) and c_{GABA} (0.399) values with the number of GABA binding sites constrained to 2.

Desensitization properties of the $\alpha 1\beta 2\varepsilon$ receptor were examined by exposing the cells to 5 min applications of 1 mM GABA. In five cells, the steady-state to peak ratio was 0.23 ± 0.17 . Desensitization decay was fitted to sums of two exponentials. The fitted time constants were 16.1 ± 2.4 s (23%) and 155 ± 81 s ($\tau_{\text{weighted}} = 120 \pm 54$ s). A sample current trace is given in Figure 1C. The steady-state to peak ratio is similar to that in the $\alpha 1\beta 2\gamma 2L$ receptor [21].

The GABA concentration-response relationship was measured by exposing cells expressing $\alpha 1\beta 2\varepsilon$ receptors to 0.1 μ M to 1 mM GABA (Figure 1D). Fitting the concentration-response data for each cell individually with Equation (1) yielded an EC_{50} of 2.9 ± 1.7 μ M and a Hill coefficient of 0.66 ± 0.12 ($n = 7$). The estimated EC_{50} is within the range of previously reported GABA EC_{50} s (1–11 μ M) for ε -containing receptors [2,3,7,9].

We also analyzed the GABA concentration-response data in the framework of a concerted transition model [15,16]. The response amplitudes were converted to P_A units as described previously [17]. Fitting the P_A data with Equation (2), with the number of GABA binding sites constrained to two [1], yielded a $K_{R,GABA}$ of 4.2 ± 2.0 μ M and a c_{GABA} of 0.399 ± 0.022 . The summary of the concentration-response analysis is given in Figure 1E. The calculated ΔG provided by GABA to stabilize the active state is -1.09 ± 0.07 kcal/mol. For comparison, GABA provides -5.8 to -6.7 kcal/mol of activation energy in the $\alpha 1\beta 2\gamma 2L$ receptor [22,23].

Receptors comprising α and β subunits are functional [24]. To verify the expression and incorporation of the ε subunit in surface receptors, we compared the properties of receptors expressed upon the injection of $\alpha 1$ and $\beta 2$ subunits to the properties of receptors expressed upon the injection of $\alpha 1$, $\beta 2$, and ε subunits. We have assumed that differences in the properties of $\alpha 1\beta 2$ and nominal $\alpha 1\beta 2\varepsilon$ receptors indicate the presence of the ε subunit in the receptor complex.

We conducted two tests. First, we compared the levels of constitutive activity and peak responses to saturating GABA. The $P_{A,\text{constitutive}}$ and $P_{A,1\text{mM GABA}}$ were estimated by comparing the amplitudes of current responses to 200 μ M picrotoxin, 1 mM GABA, and 1 mM GABA + 10 μ M propofol (see above; [17]). In the $\alpha 1\beta 2$ GABA_A receptor, the estimated $P_{A,\text{constitutive}}$ was 0.0013 ± 0.0019 ($n = 11$), and the $P_{A,1\text{mM GABA}}$ was 0.59 ± 0.18 ($n = 6$). The $P_{A,\text{constitutive}}$ in $\alpha 1\beta 2$ and $\alpha 1\beta 2\varepsilon$ receptors are significantly different ($p < 0.001$;

t-test). Sample traces showing responses to picrotoxin and GABA in the $\alpha 1\beta 2$ receptor are given in Figure 2A.

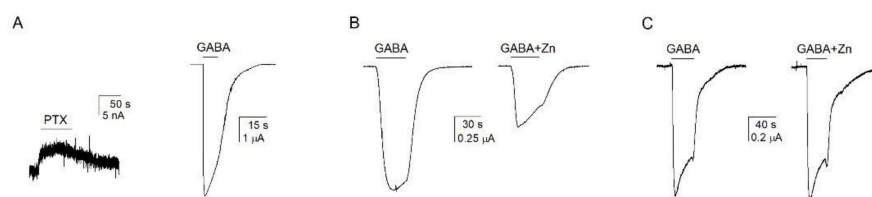


Figure 2. Comparison of properties of $\alpha 1\beta 2$ and $\alpha 1\beta 2\epsilon$ GABA_A receptors. (A) Sample current responses to 200 μM picrotoxin (PTX) and 1 mM GABA in a cell expressing $\alpha 1\beta 2$ receptors. Analogous comparison for the $\alpha 1\beta 2\epsilon$ receptor is given in Figure 1A. (B) Sample current responses to 3 μM GABA and 3 μM GABA + 3 μM ZnCl₂ in a cell expressing $\alpha 1\beta 2$ receptors. (C) Sample current responses to 3 μM GABA and 3 μM GABA + 3 μM ZnCl₂ in a cell expressing $\alpha 1\beta 2\epsilon$ receptors. In all panels, the paired recordings are from the same cells.

In the second test, we measured the inhibitory effect of Zn²⁺. Ternary GABA_A receptors and specifically the $\alpha\beta\epsilon$ receptor are less sensitive to Zn²⁺ than the binary $\alpha\beta$ receptor (IC₅₀s at tens to hundreds of micromolar vs. sub-micromolar concentrations; [3,7,25]). Here, we compared the effect of 3 μM Zn²⁺ on currents elicited by an $\sim\text{EC}_{50}$ concentration of GABA in $\alpha 1\beta 2$ and $\alpha 1\beta 2\epsilon$ receptors. The peak and residual (at the end of a 30 s application) responses to GABA + Zn²⁺ were compared to control GABA responses measured before exposure to Zn²⁺. In the $\alpha 1\beta 2$ receptor, exposure to Zn²⁺ reduced the peak response to 3 μM GABA (EC_{54±14}) to 42 ± 20% of control and the residual response to 28 ± 19% (*n* = 5) of control. In contrast, in the nominal $\alpha 1\beta 2\epsilon$ receptor the peak and residual responses to 3 μM GABA (EC_{67±23}) in the presence of Zn²⁺ were 96 ± 9% and 79 ± 15% (*n* = 6) of control, respectively. The effects of Zn²⁺ on both peak and residual currents are significantly (*p* < 0.001) different in the $\alpha 1\beta 2$ and $\alpha 1\beta 2\epsilon$ receptors. Sample current responses to GABA and GABA + Zn²⁺ are shown in Figure 2B,C. We infer that the ϵ subunit is incorporated into receptor complexes and that this results in receptors with distinct properties.

3.2. Activation of the $\alpha 1\beta 2\epsilon$ GABA_A Receptor by Allosteric Agonists

Some prior work has indicated that ϵ subunit-containing receptors may be insensitive to the potentiating effects of allosteric agents including neurosteroids and GABAergic anesthetics ([2] but see [3,7]). Here, we have investigated activation and potentiation of the $\alpha 1\beta 2\epsilon$ receptor by the allosteric agonists propofol, 3 α 5 α P, and pentobarbital.

Cells expressing $\alpha 1\beta 2\epsilon$ receptors were exposed to 0.2–50 μM propofol (Figure 3A). Fitting of the concentration-response data with Equation (1) yielded an EC₅₀ of 4.4 ± 0.9 μM and a Hill coefficient of 1.22 ± 0.18 (*n* = 5). Mechanistic analysis (Equation (2)) of the propofol concentration-response data, with the number of propofol binding sites constrained to six [26], yielded a K_{R,propofol} of 4.1 ± 0.9 μM and a c_{propofol} of 0.771 ± 0.011. The calculated activation energy provided by propofol is −0.92 ± 0.05 kcal/mol. (We note that the calculated ΔG is not sensitive to the number of imposed binding sites for the agonist.) For comparison, propofol provides −5.3 to −6.5 kcal/mol of free energy change in the $\alpha 1\beta 2\gamma 2\text{L}$ receptor [26,27]. Thus, the $\alpha 1\beta 2\epsilon$ receptor is weakly activated by propofol.

Next, we investigated potentiation of GABA-elicited currents by the neurosteroid 3 α 5 α P. Co-application of 1 μM 3 α 5 α P enhanced the response to 0.1 μM GABA (EC₆; P_A = 0.22) to 222 ± 13% (*n* = 5) of control (Figure 3B). In previous work, we have shown that high P_{A, constitutive} is associated with reduced potentiation but increased direct activation [28]. We, therefore, measured 3 α 5 α P-induced direct activation of the $\alpha 1\beta 2\epsilon$ receptor. The cells were exposed to 0.03 to 3 μM 3 α 5 α P. For normalization purposes, each cell was additionally exposed to 1 mM GABA + 10 μM propofol. No meaningful current responses were observed in the presence of 0.03 to 0.3 μM 3 α 5 α P (not shown). Consistent and robust currents were recorded only upon the application of 1 or 3 μM steroid, while the relative

amplitudes were indistinguishable indicating that direct activation is saturated at 1 μM 3 α 5 α P. The relative response to 1 μM 3 α 5 α P was $2.0 \pm 2.1\%$ ($n = 11$) of the peak response to 1 mM GABA + 10 μM propofol, translating into a $P_{A,1 \mu\text{M} 3\alpha 5\alpha\text{P}}$ of 0.20 ± 0.02 (Figure 3C). From here, we could estimate the value of $c_{3\alpha 5\alpha\text{P}}$, assuming that the response to 1 μM steroid is saturating:

$$c_{\text{agonist}} = \left[\frac{(1/P_A) - 1}{L} \right]^{1/N_{\text{agonist}}} \quad (3)$$

where L reflects the level of constitutive activity ($L = (1 - P_{A,\text{constitutive}})/P_{A,\text{constitutive}}$) and N_{agonist} is the number of steroid-binding sites. With the number of steroid-binding sites constrained to two [29,30], the calculated $c_{3\alpha 5\alpha\text{P}}$ is 0.951 ± 0.047 , and the free energy change contributed by the steroid -0.06 ± 0.06 kcal/mol. This is drastically less than the free energy change in the $\alpha 1\beta 2\gamma 2\text{L}$ GABA $_A$ receptor (~ -2.00 kcal/mol [31,32]). The 3 α 5 α P direct activation data are in general agreement with potentiation data; the $c_{3\alpha 5\alpha\text{P}}$ of 0.951 predicts potentiation to 150% of control at 0.1 μM GABA. In sum, we infer that the neurosteroid 3 α 5 α P is a very inefficacious agonist of the $\alpha 1\beta 2\epsilon$ receptor.

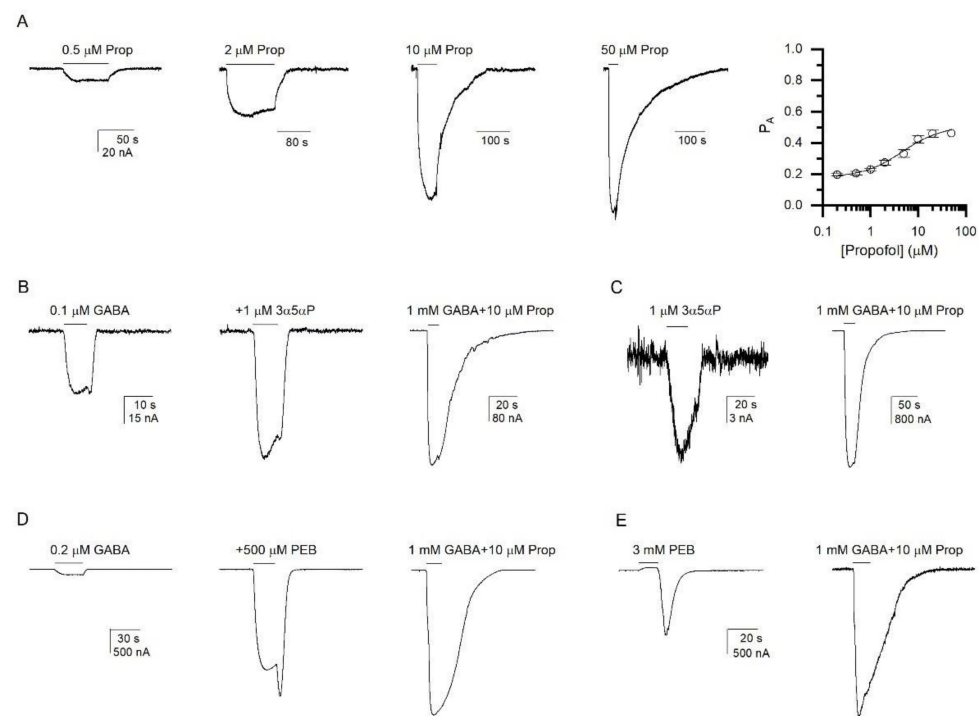


Figure 3. Activation and potentiation of the $\alpha 1\beta 2\epsilon$ GABA $_A$ receptor by allosteric agonists.

(A) Sample current responses to 0.5, 2, 10, and 50 μM propofol (Prop). All traces are from the same cell. The right panel gives the propofol concentration-response relationship. The data are expressed in the units of P_A . The data points give means \pm S.D. from five cells. The curve is calculated using the mean $K_{R,\text{propofol}}$ (4.1 μM) and c_{propofol} (0.771) values with the number of propofol binding sites constrained to 6. (B) Sample current responses to 0.1 μM GABA and 0.1 μM GABA + 1 μM 3 α 5 α P. For comparison, a response to 1 mM GABA + 10 μM propofol (Prop) is given. All traces are from the same cell. (C) Sample current responses to 1 μM 3 α 5 α P and 1 mM GABA + 10 μM propofol (Prop), from the same cell. (D) Sample current responses to 0.2 μM GABA and 0.2 μM GABA + 500 μM pentobarbital (PEB). For comparison, a response to 1 mM GABA + 10 μM propofol (Prop) is given. All traces are from the same cell. The amplitude of rebound current upon washout of GABA + PEB was used for analysis. (E) Sample current responses to 3 mM pentobarbital (PEB) and 1 mM GABA + 10 μM propofol (Prop), from the same cell. The amplitude of rebound current upon washout of PEB was used for analysis.

Coapplication of 500 μM pentobarbital with 0.2 μM GABA ($3 \pm 1\%$ of the response to 1 mM GABA + 10 μM propofol; $P_A = 0.20 \pm 0.01$; $n = 5$) enhanced the response amplitude by 28 ± 5 -fold ($P_A = 0.85 \pm 0.07$). Sample current traces are shown in Figure 3D. Assuming that the potentiating effect of pentobarbital is saturated at 500 μM [7], the calculated (Equation (3)) $c_{\text{pentobarbital}}$, with $N_{\text{pentobarbital}}$ constrained to two [33], is 0.210 ± 0.057 . The ΔG provided by pentobarbital to stabilize the active state is -1.88 ± 0.33 kcal/mol. Pentobarbital is therefore a weaker agonist of the $\alpha 1\beta 2\epsilon$ than the $\alpha 1\beta 2\gamma 2\text{L}$ receptor ($\Delta G = -6.0$ to -6.5 kcal/mol [31,33]). A complementary attempt to estimate the gating efficacy of pentobarbital was made from the analysis of $\alpha 1\beta 2\epsilon$ receptors directly activated by pentobarbital. From the comparison of the rebound response upon the washout of 3 mM pentobarbital and the peak response to 1 mM GABA + 10 μM propofol (Figure 3E), we estimated that $P_{A,3\text{ mM pentobarbital}}$ is 0.60 ± 0.11 ($n = 6$). Using Equation (3), we then calculated a $c_{\text{pentobarbital}}$ of 0.384 ± 0.086 , and $\Delta G_{\text{pentobarbital}}$ of -1.15 ± 0.27 kcal/mol. The value of $c_{\text{pentobarbital}}$ calculated from direct activation data is greater than that calculated from potentiation data, implying lower efficacy. Potential explanations for this are that direct activation is not saturated at 3 mM pentobarbital and/or that the peak amplitude measured as the rebound current upon the termination of application of pentobarbital underestimates the true current response due to concurrent channel block.

3.3. Changes in the Expression of ϵ Subunit Have Minor Effect on Receptor Function

It has been proposed previously that the properties of the $\alpha\beta\epsilon$ receptor depend on the relative expression level of the ϵ subunit. Overexpression of the ϵ subunit has been associated with enhanced constitutive activity, increased sensitivity to GABA, and reduced sensitivity to the potentiating actions of anesthetics and neurosteroids [8,13].

Here, we compared the properties of $\alpha 1\beta 2\epsilon$ receptors expressed under the injection ratios of 1:1:1, 1:1:5, and 1:1:10. We measured the levels of constitutive activity, GABA $\text{EC}_{50\text{S}}$, peak P_A of saturating GABA, and P_A of the responses to 50 μM propofol or 1 μM $3\alpha 5\alpha\text{P}$. We estimate that the $P_{A,\text{constitutive}}$ are 0.16 ± 0.12 ($n = 10$) and 0.31 ± 0.13 ($n = 13$) in cells injected with 1:1:1 and 1:1:10 cRNA ($\alpha:\beta:\epsilon$) ratios, respectively. As shown above, the $P_{A,\text{constitutive}}$ is 0.18 ± 0.08 at 1:1:5 injection ratio. The $P_{A,\text{constitutive}}$ at 1:1:10 injection ratio significantly ($p < 0.05$) differs from the $P_{A,\text{constitutive}}$ at 1:1:5 and 1:1:1 injection ratios.

The GABA $\text{EC}_{50\text{S}}$ were 2.6 ± 1.2 μM ($n = 5$) at 1:1:1, 2.9 ± 1.2 μM at 1:1:5 (see above), and 2.4 ± 1.0 μM ($n = 5$) at 1:1:10 injection ratio. The estimated peak $P_{A,1\text{ mM GABA}}$ were 0.63 ± 0.13 ($n = 8$), 0.71 ± 0.09 (see above), and 0.79 ± 0.05 μM ($n = 6$) at 1:1:1, 1:1:5, and 1:1:10 injection ratios, respectively. The differences in GABA $\text{EC}_{50\text{S}}$ and $P_{A,1\text{ mM GABA}}$ are not statistically significant ($p > 0.05$).

The peak P_A in the presence of 50 μM propofol was 0.54 ± 0.18 ($n = 6$), 0.46 ± 0.09 ($n = 5$), and 0.66 ± 0.03 ($n = 5$) in cells injected at 1:1:1, 1:1:5, and 1:1:10 cRNA ratios, respectively. Note that the values include constitutive activity, so the higher constitutive P_A contributed to the higher $P_{A,50\text{ }\mu\text{M propofol}}$ at 1:1:10.

The ratios of responses to 1 μM $3\alpha 5\alpha\text{P}$ and 1 mM GABA + 10 μM propofol were indistinguishable for all injection ratios ($1.3 \pm 0.7\%$, $2.0 \pm 2.1\%$, $1.5 \pm 1.3\%$ at 1:1:1, 1:1:5, and 1:1:10, respectively). The peak P_A in the presence of 1 μM $3\alpha 5\alpha\text{P}$ was 0.17 ± 0.01 ($n = 5$) at 1:1:1, 0.20 ± 0.02 (see above) at 1:1:5, and 0.32 ± 0.01 ($n = 5$) at 1:1:10 injection ratio. The $P_{A,1\text{ }\mu\text{M } 3\alpha 5\alpha\text{P}}$ were different ($p < 0.01$) for any pairwise comparison. The apparent increase in gating efficacy for $3\alpha 5\alpha\text{P}$ is, however, almost fully due to the increase in $P_{A,\text{constitutive}}$.

We also compared the potentiating effect of $3\alpha 5\alpha\text{P}$ at different injection ratios. Coapplication of 1 μM $3\alpha 5\alpha\text{P}$ with 0.1–0.3 μM GABA enhanced the current response to $313 \pm 87\%$ ($n = 6$), $222 \pm 13\%$ ($n = 5$), or $173 \pm 19\%$ ($n = 5$) of control at 1:1:1, 1:1:5, and 1:1:10 injection ratios, respectively. The effects observed at 1:1:1 and 1:1:10 injection ratios were significantly ($p < 0.01$) different.

The overall finding is that overexpression of the ϵ subunit leads to an increase in $P_{A,\text{constitutive}}$ without affecting other tested activation parameters, including the efficacy of the transmitter GABA or the allosteric agonists propofol and $3\alpha 5\alpha\text{P}$. An increase in

$P_{A, \text{constitutive}}$ upon overexpression of the ϵ subunit has been reported previously [13]. This, however, was accompanied by a loss of apparent potentiation of low GABA responses by allosteric agonists including a neurosteroid. One potential explanation for this apparent discrepancy is that overexpression of the ϵ subunit in our hands leads to the presence of a class of surface receptors that are constitutively active and can be blocked by picrotoxin, but which do not respond to GABA or allosteric agonists.

3.4. Atypical Properties of the $\alpha 1\beta 2\epsilon$ Receptor

To gain further insight into the properties of the $\alpha 1\beta 2\epsilon$ receptor, we examined the effects of mutations in the TM2 region of the ϵ subunit. First, we mutated the conserved 9' leucine residue to serine (L299S in the ϵ subunit). In previous work on γ and δ subunit-containing receptors, the TM2-L9'S mutation has been shown to increase the level of constitutive activity and sensitivity to agonists while the magnitude of the effect is dependent on the number of mutated subunits [34–36]. In contrast, the $\alpha 1\beta 2\epsilon$ (L299S) receptor did not demonstrate elevated constitutive activity or higher sensitivity to GABA. In the mutant receptor, the estimated $P_{A, \text{constitutive}}$ was 0.06 ± 0.08 ($n = 11$), and the $P_{A, 1 \text{ mM GABA}}$ was 0.53 ± 0.22 ($n = 11$), indicating significant decreases in constitutive activity ($p < 0.001$) and maximal P_A for GABA ($p < 0.05$). To gain initial insight into the position of the transmitter concentration-response relationship, we tested the ratio of peak responses to 3 μM and 1 mM GABA. In the $\alpha 1\beta 2\epsilon$ receptor, this ratio is 0.54 ± 0.10 ($n = 7$). In the $\alpha 1\beta 2\epsilon$ (L299S) receptor, the 3 μM /1 mM GABA response ratio was 0.36 ± 0.04 ($n = 5$), indicating a small right-shift, rather than the expected left-shift, in the GABA concentration-response relationship. The data are summarized in Figure 4A–C.

To verify the presence of the ϵ (L299S) subunit in surface receptors, we compared the $P_{A, \text{constitutive}}$ and sensitivity to Zn^{2+} in $\alpha 1\beta 2$ and $\alpha 1\beta 2\epsilon$ (L299S) receptors. We reasoned that differences in the properties of $\alpha 1\beta 2$ and nominal $\alpha 1\beta 2\epsilon$ (L299S) receptors would serve as proof of the presence of the ϵ (L299S) subunit. The estimated $P_{A, \text{constitutive}}$ in $\alpha 1\beta 2$ and $\alpha 1\beta 2\epsilon$ (L299S) (0.0013 and 0.06, respectively) were significantly ($p < 0.05$) different. In the $\alpha 1\beta 2\epsilon$ (L299S) receptor, co-application of 3 μM Zn^{2+} with 3 μM GABA ($\text{EC}_{49 \pm 14}$) reduced the peak and residual currents at the end of a 30 s drug application to $70 \pm 12\%$ and $41 \pm 5\%$ ($n = 5$) of control, respectively. The observed inhibitory effect of Zn^{2+} on the peak response in $\alpha 1\beta 2\epsilon$ (L299S) is significantly ($p < 0.05$) different from its effect on the peak response in the $\alpha 1\beta 2$ receptor (42); above). The effects on residual current were indistinguishable in $\alpha 1\beta 2\epsilon$ (L299S) and $\alpha 1\beta 2$ receptors.

We also measured the effect of the homologous $\alpha 1$ (L263S) mutation on receptor properties (Figure 4A–C). The $P_{A, \text{constitutive}}$ was increased to 0.35 ± 0.08 ($n = 6$) in the $\alpha 1$ (L263S) $\beta 2\epsilon$ receptor. This is significantly ($p < 0.001$) different from the level of constitutive activity in wild-type $\alpha 1\beta 2\epsilon$. The estimated $P_{A, 1 \text{ mM GABA}}$ was 1.04 ± 0.15 ($n = 5$), and the 3 μM /1 mM GABA response ratio was 1.00 ± 0.13 ($n = 5$). The observed changes in receptor parameters are indicative of an increase in gating efficacy and are in agreement with previous data on how the TM2-L9'S mutation modifies GABA_A receptor function [34,36].

Second, we tested the effect of the ϵ (S296F) mutation on inhibition by picrotoxin. Substitution of this residue (TM2-6') in other subunits has been shown to drastically reduce inhibition by picrotoxin; specifically, mutation of even a single 6' residue to phenylalanine in the $\alpha 1\beta 2\gamma 2$ receptor has been shown to render the receptor resistant to picrotoxin [37,38].

The experiments were done by exposing a cell to short applications of 1 mM GABA separated by 4–5 min washes until a stable response to GABA was obtained. We then applied 100 μM picrotoxin for 10 s, followed by co-application of 1 mM GABA + 100 μM picrotoxin. The peak amplitude of the response to GABA + picrotoxin was compared to that of the control response to GABA alone applied before exposure to picrotoxin to calculate a response ratio. In the $\alpha 1\beta 2\epsilon$ receptor, the GABA response ratio was 0.55 ± 0.14 ($n = 5$), indicating that 45% of receptors were blocked by picrotoxin. In contrast with reported findings of other GABA_A TM2-6' mutants, the GABA response ratio in the $\alpha 1\beta 2\epsilon$ (S296F)

mutant was 0.12 ± 0.05 ($n = 7$), indicating increased sensitivity (88% blocked) to picrotoxin. The data are summarized in Figure 4D.

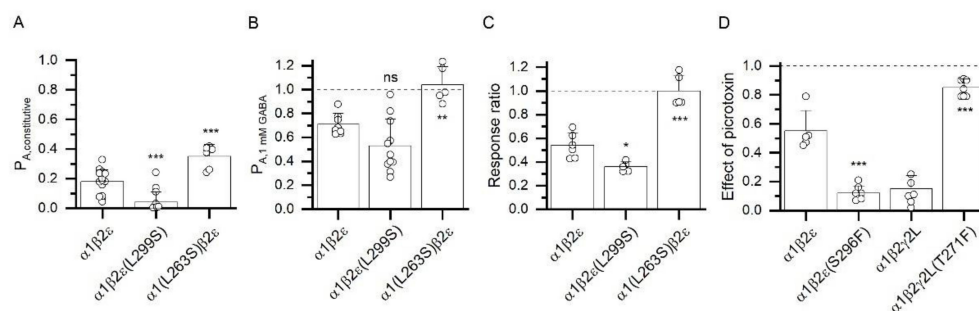


Figure 4. Divergent consequences of homologous mutations in the TM2 regions of ϵ subunits and $\alpha 1$ or $\gamma 2L$ subunits. (A) $P_{A, \text{constitutive}}$ in $\alpha 1\beta 2\epsilon$, $\alpha 1\beta 2\epsilon(L299S)$, and $\alpha 1(L263S)\beta 2\epsilon$ receptors. (B) $P_{A, 1 \text{ mM GABA}}$ in $\alpha 1\beta 2\epsilon$, $\alpha 1\beta 2\epsilon(L299S)$, and $\alpha 1(L263S)\beta 2\epsilon$ receptors. (C) Response ratio gives the ratio of peak responses to applications of 3 μM and 1 mM GABA in $\alpha 1\beta 2\epsilon$, $\alpha 1\beta 2\epsilon(L299S)$, and $\alpha 1(L263S)\beta 2\epsilon$ receptors. Lower values of the ratio are indicative of a right-shifted concentration-response relationship. (D) Effect of picrotoxin describes the ratio of responses to 1 mM GABA + 100 μM picrotoxin and 1 mM GABA tested before exposure to picrotoxin in $\alpha 1\beta 2\epsilon$ and $\alpha 1\beta 2\epsilon(S296F)$ receptors, and in $\alpha 1\beta 2\gamma 2L$ and $\alpha 1\beta 2\gamma 2L(T271F)$ receptors. Lower values of the ratio are indicative of higher sensitivity to channel blocker picrotoxin (1 indicates no effect). Statistical analysis was done using ANOVA with Dunnett's post hoc correction (A–C) or *t*-test (D) comparing the properties of mutant receptors to the respective wild-type receptor. The $\epsilon(L299)$ and $\alpha 1(L263)$ residues are homologous 9' residues in TM2. The $\epsilon(S296)$ and $\gamma 2L(T271)$ residues are homologous 6' residues in TM2. *, $p < 0.05$; **, $p < 0.01$; ***, $p < 0.001$; ns, not significant.

To confirm the incorporation of the $\epsilon(S296F)$ subunit in surface receptors, we compared sensitivity to Zn^{2+} in $\alpha 1\beta 2$ and $\alpha 1\beta 2\epsilon(S296F)$ receptors. In $\alpha 1\beta 2\epsilon(S296F)$, co-application of 3 μM Zn^{2+} with 5 μM GABA ($\text{EC}_{58 \pm 11}$) reduced the peak and residual currents at the end of a 30 s drug application to $77 \pm 10\%$ and $49 \pm 8\%$ ($n = 5$) of control, respectively. The observed inhibitory effect of Zn^{2+} on the peak response is significantly different ($p < 0.01$) in $\alpha 1\beta 2$ and $\alpha 1\beta 2\epsilon(S296F)$ receptors. The effect of Zn^{2+} on residual current is indistinguishable in $\alpha 1\beta 2$ and $\alpha 1\beta 2\epsilon(S296F)$ receptors.

As a positive control, we verified the effect of the $\gamma 2(T271F)$ (TM2-6') mutation on inhibition by picrotoxin. Pre-application followed by co-application of 100 μM picrotoxin with 1 mM GABA reduced the GABA response ratio to 0.15 ± 0.09 ($n = 7$) in the $\alpha 1\beta 2\gamma 2L$ receptor. In the $\alpha 1\beta 2\gamma 2(T271F)$ receptor, the GABA response ratio was 0.85 ± 0.06 ($n = 7$), indicating reduced sensitivity to picrotoxin (Figure 4D).

In sum, the $\alpha 1\beta 2\epsilon(L299S)$ receptor exhibits low $P_{A, \text{constitutive}}$ while the $\alpha 1\beta 2\epsilon(S296F)$ receptor retains high sensitivity to picrotoxin. Both findings are remarkably different from how mutations in homologous positions in other subunits modify GABA_A receptor function [34–38].

3.5. Accessibility of TM2 Residues in the ϵ Subunit

Given the surprising effects of mutations of the 6' and 9' residues, in the next set of experiments we employed the scanning cysteine accessibility method to identify residues in TM2 of the ϵ subunit that line the ion channel. Residues in TM2 were individually mutated to cysteine, and the effect of exposure to the sulfhydryl-specific reagent pCMB, alone or coapplied with GABA, on peak response to saturating GABA was measured (Figure 5A). The overall goal was to determine the accessibility of ϵ -TM2 residues to pCMB and to identify any differences in the labeling of ϵ -TM2 and $\gamma 2L$ -TM2.

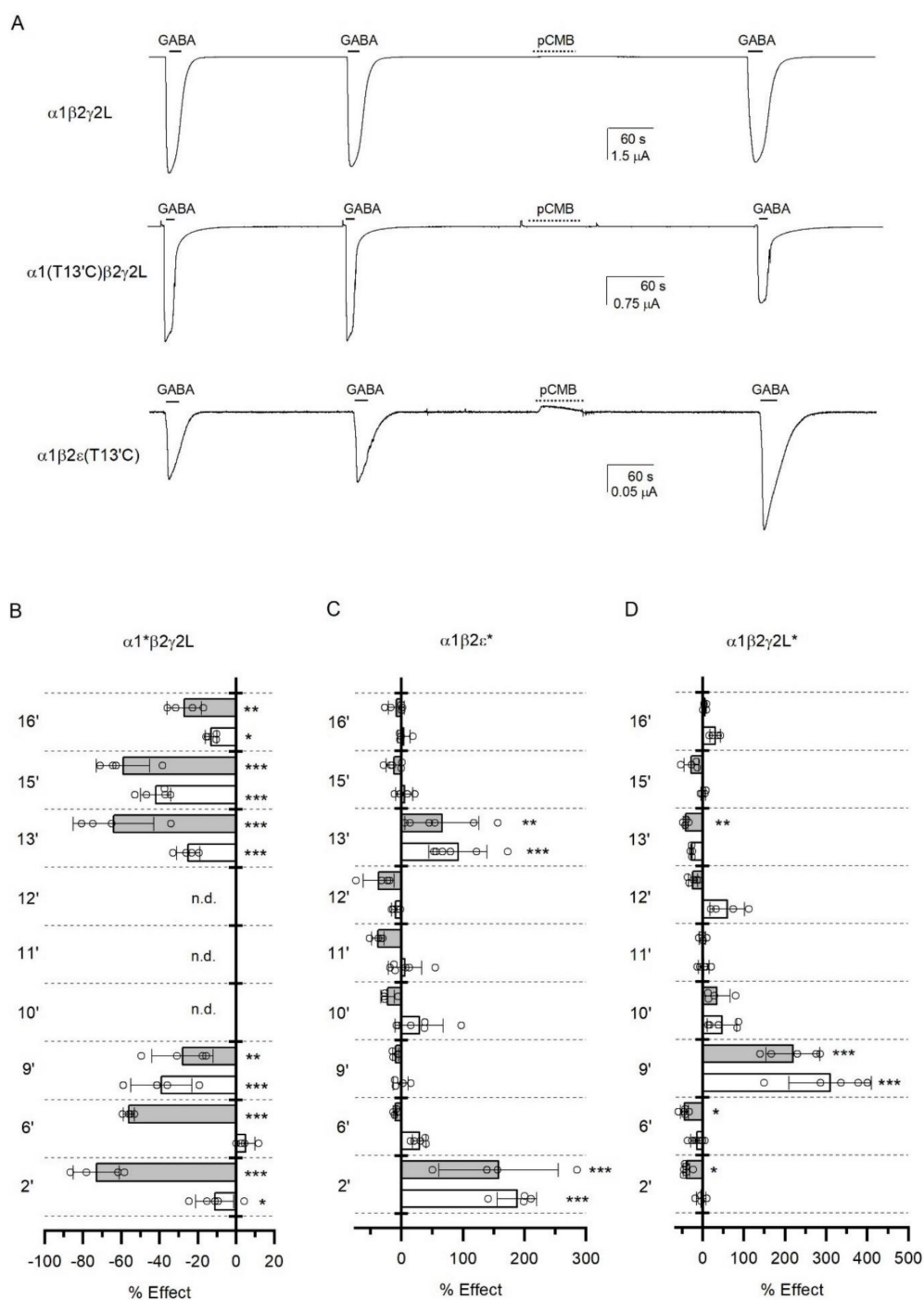


Figure 5. Accessibility of residues in TM2 in $\alpha 1$, ϵ , and $\gamma 2L$ subunits. (A) Sample traces showing the lack of effect of pCMB on response to GABA in the $\alpha 1\beta 2\gamma 2L$ receptor (top trace), the inhibitory effect of pCMB on response to GABA in the $\alpha 1(T13'C)\beta 2\gamma 2L$ receptor (middle trace), and potentiating effect of pCMB on response to GABA in the $\alpha 1\beta 2\epsilon(T13'C)$ receptor (bottom trace). In each trace, the concentration of pCMB was 100 μM and the concentration of GABA was 1 mM. (B) Summary of effects of pCMB on $\alpha 1*\beta 2\gamma 2L$ receptor ($\alpha 1\beta 2\gamma 2L$ containing the TM2 mutations in the $\alpha 1$ subunit) function. (C) Summary of effects of pCMB on $\alpha 1\beta 2\epsilon*$ receptor function. (D) Summary of effects of pCMB on $\alpha 1\beta 2\gamma 2L*$ receptor function. In (B–D), the graphs show modulation of responses to saturating GABA upon exposure to pCMB alone (white) or pCMB + saturating GABA (grey). n.d., not done. Statistical tests were conducted using pairwise comparison of means with Dunnett’s correction. *, $p < 0.05$; **, $p < 0.01$; ***, $p < 0.001$.

In initial control experiments, we measured the accessibility of selected $\alpha 1$ -TM2 residues. The $\alpha 1\beta 2\gamma 2L$ receptors containing cysteine substitutions in the $\alpha 1$ subunit ($\alpha 1^*\beta 2\gamma 2L$) demonstrated significant changes in current responses to GABA upon labeling with pCMB at $\alpha 1(I16'C)$ (residue number in mature peptide: 270), $\alpha 1(S15'C)$, $\alpha 1(T13'C)$, and $\alpha 1(L9'C)$. Labeling was similar in the absence and presence of GABA, indicating that these residues are accessible to pCMB in resting and active/desensitized receptors. With the exception of modification of the current response in $\alpha 1(S15'C)$, these data are in agreement with those previously reported [19]. We also tested the effect of labeling at $\alpha 1(T6'C)$ and $\alpha 1(V2'C)$. In agreement with a previous report [19], the $\alpha 1(T6'C)$ - and $\alpha 1(V2'C)$ -containing receptors were labeled with pCMB in the presence of GABA. Exposure to pCMB in the absence of GABA did not modify the current response in the $\alpha 1(T6'C)\beta 2\gamma 2L$ receptor, and had a small, although statistically significant, effect in $\alpha 1(V2'C)\beta 2\gamma 2L$. In control experiments on the wild-type $\alpha 1\beta 2\gamma 2L$ receptor, exposure to pCMB alone or pCMB in the presence of saturating GABA had no effect on response to subsequent application of GABA, indicating lack of modification of native cysteines. The data are summarized in Figure 5B.

Exposure to pCMB in the absence or presence of GABA modified current responses in the $\alpha 1\beta 2\epsilon(T13'C)$ (mutated residue number in ϵ : 303) and $\alpha 1\beta 2\epsilon(S2'C)$ receptors. No statistically significant modification of current response was observed in $\alpha 1\beta 2\epsilon$ wild-type, $\alpha 1\beta 2\epsilon(T16'C)$, $\alpha 1\beta 2\epsilon(G15'C)$, $\alpha 1\beta 2\epsilon(A12'C)$, $\alpha 1\beta 2\epsilon(M11'C)$, or $\alpha 1\beta 2\epsilon(T10'C)$. Notably, exposure to pCMB + GABA did not lead to modification of current responses in $\alpha 1\beta 2\epsilon(L9'C)$ or $\alpha 1\beta 2\epsilon(S6'C)$. One explanation for this is that the secondary structure of ϵ -TM2 differs from that of $\alpha 1$ -TM2, rendering the TM2-9' and TM2-6' residues in the ϵ subunit inaccessible to pCMB. This would be consistent with our findings that the $\epsilon(L299S)$ (TM2-9') and $\epsilon(S296F)$ (TM2-6') mutations are ineffective at increasing sensitivity to GABA and decreasing sensitivity to picrotoxin, respectively, in the $\alpha 1\beta 2\epsilon^*$ receptor. An alternative explanation is that covalent labeling of cysteines at these positions in ϵ -TM2 does not result in a functional effect. The data are summarized in Figure 5C.

In the $\alpha\beta\gamma$ and $\alpha\beta\delta$ ternary GABA_A receptors, the transmitter binding sites are formed at the interfaces between the two β/α subunit pairs. The fifth subunit, i.e., a γ or a δ , does not directly contribute to transmitter-induced activation, and at least in the related nicotinic receptor makes a smaller energetic contribution than the transmitter-binding subunits towards channel activation [39]. Due to their sequence homology, the ϵ subunit may substitute for the $\gamma 2$ subunit in the ternary GABA_A receptor. We reasoned that if reduced involvement in channel activation underlies the lack of functional effect upon cysteine modification in ϵ -TM2, then an analogous pattern may be observed in the $\alpha 1\beta 2\gamma 2L$ receptor in which modifications are made in $\gamma 2L$ -TM2.

We tested the effects of labeling with pCMB in $\alpha 1\beta 2\gamma 2L(T16'C)$ (mutated residue number in $\gamma 2L$: 281), $\alpha 1\beta 2\gamma 2L(S15'C)$, $\alpha 1\beta 2\gamma 2L(T13'C)$, $\alpha 1\beta 2\gamma 2L(T12'C)$, $\alpha 1\beta 2\gamma 2L(M11'C)$, $\alpha 1\beta 2\gamma 2L(T10'C)$, $\alpha 1\beta 2\gamma 2L(L9'C)$, $\alpha 1\beta 2\gamma 2L(T6'C)$, and $\alpha 1\beta 2\gamma 2L(L2'C)$ receptors. These data are summarized in Figure 5D. Significant effects were observed upon pCMB-modification in the $\alpha 1\beta 2\gamma 2L(L9'C)$ receptor in the absence of GABA, and in the $\alpha 1\beta 2\gamma 2L(T13'C)$, $\alpha 1\beta 2\gamma 2L(L9'C)$, $\alpha 1\beta 2\gamma 2L(T6'C)$, and $\alpha 1\beta 2\gamma 2L(L2'C)$ receptors in the presence of GABA. Thus, the pattern of modification in $\gamma 2L$ -TM2 is more similar to that in $\alpha 1$ -TM2 in the $\alpha 1^*\beta 2\gamma 2L$ receptor but differs from the pattern of modification in ϵ -TM2 in $\alpha 1\beta 2\epsilon^*$. Most notably, pCMB-labeling of the TM2-9' and TM2-6' residues in the $\gamma 2L$ and $\alpha 1$ subunits, but not in the ϵ subunit results in functional effect.

4. Discussion

In this study, we have investigated the functional properties of the rat $\alpha 1\beta 2\epsilon$ GABA_A receptor. We show that the receptor is inefficaciously activated by orthosteric and allosteric agonists, including the transmitter GABA, anesthetics propofol and pentobarbital, and the neurosteroid $3\alpha 5\alpha P$. Despite the remarkably high constitutive activity ($P_{A, \text{constitutive}} = 0.18$), the peak P_A in the presence of saturating GABA is only 0.71. Quantitative analysis of the current responses indicates that the binding of GABA provides -1.09 kcal/mol free energy

change to stabilize the active state in the $\alpha 1\beta 2\epsilon$ receptor, compared to ~ -6 kcal/mol in the $\alpha 1\beta 2\gamma 2L$ receptor. The anesthetics propofol and pentobarbital, and the neurosteroid $3\alpha 5\alpha P$ are likewise low-efficacy agonists. The free energy changes in the presence of propofol and pentobarbital were -0.92 kcal/mol and -1.88 kcal/mol, respectively, which is 3–6-fold less than the ΔG in the $\alpha 1\beta 2\gamma 2L$ receptor. The $\alpha 1\beta 2\epsilon$ receptor was virtually unresponsive to $3\alpha 5\alpha P$ ($\Delta G = -0.06$ kcal/mol).

Weak sensitivity of the ϵ -containing receptor to GABAergic neurosteroids may have physiological significance. During pregnancy, the levels of hormone-derived neurosteroids including $3\alpha 5\alpha P$ increase by up to 100-fold [40], yet this is not accompanied by changes in respiratory function or behavior in the sedation spectrum. Conversely, it has been shown that pregnant rats exhibit a ~ 4 -fold increase in the expression of the ϵ subunit in medullary neurons of the ventral respiratory column [41]. Thus, the increased expression of the ϵ subunit may be an adaptive response to increased neurosteroid concentrations in pregnancy to preserve normal physiological function.

A high level of constitutive activity has been observed in heterologously expressed $\alpha\beta\epsilon$ receptors [7,9–11,13]. In contrast, studies of ϵ subunit-expressing neurons in *locus coeruleus*, and hypothalamic and cardiac vagal neurons that express the ϵ subunit have reported no or minimal picrotoxin-sensitive constitutive activity [12,42,43]. The reason for this discrepancy is unclear.

Reduced sensitivity to allosteric agonists has been reported previously. Our data indicating a mere doubling of the response to low GABA in the presence of saturating $3\alpha 5\alpha P$ is in excellent agreement with previous work on recombinant and native ϵ -containing receptors with neurosteroids [2,13,42]. Lower sensitivity to propofol and pentobarbital has been reported previously for recombinant ϵ -containing receptors [2,13]. Although direct comparison of the results is not trivial due to differences in the concentrations of GABA and/or the allosteric agonist, our data are in qualitative agreement with the previous reports. We note, however, that we did not observe significant differences in receptor properties upon overexpression of the ϵ subunit [13].

Transfection of rat cardiac parasympathetic neurons with the human ϵ subunit abolishes prolongation of sIPSCs in the presence of pentobarbital [12]. Likewise, the increased expression of the ϵ subunit in the medullary ventral respiratory column during torpor in hibernating 13-lined squirrel has been linked to resistance to pentobarbital-elicited depression of spontaneous neuronal activity [44,45]. Thus, the pharmacological properties of recombinant and native ϵ subunit-containing receptors are in agreement.

Previous studies of recombinant $\alpha\beta\epsilon$ receptors have employed a variety of subunit combinations including $\alpha 1\beta 1\epsilon$, $\alpha 1\beta 3\epsilon$, $\alpha 2\beta 1\epsilon$, $\alpha 2\beta 3\epsilon$, and $\alpha 3\beta 1\epsilon$ [2,3,7–11,13]. To the best of our knowledge, this is the first study of the rat $\alpha 1\beta 2\epsilon$ receptor. The reported properties of different subtypes of ϵ -containing receptors are generally consistent. The partners of the ϵ subunit in native receptors are not fully clear, although $\alpha 3$ and θ , or $\alpha 3$ and $\beta 1/3$ have been proposed [42,46,47]. In HEK 293 cells, the ϵ subunit can co-assemble with $\alpha 1\beta 3\gamma 2$ subunits to form a functionally distinct $\alpha\beta\gamma\epsilon$ receptor [48].

Studies of the effects of mutations of residues in TM2 provided some surprising results. The TM2-L9'S and TM2-S6'F mutations had atypical effects on receptor properties. The substitution of the conserved leucine at TM2-9' in any subunit of the receptor normally leads to increased constitutive activity and sensitivity to agonists [34–36]. Introduction of the TM2-L9'S mutation to the $\alpha 1$ subunit $\alpha 1\beta 2\epsilon$ receptor increased constitutive activity and sensitivity to GABA while in the ϵ subunit the mutation significantly reduced constitutive activity. Phenylalanine substitution at the TM2-6' location decreases sensitivity to picrotoxin when introduced in $\alpha 1$, $\beta 2$, or $\gamma 2$ subunits [37,38]. However, when introduced in the ϵ subunit, the mutation significantly increased inhibition by picrotoxin. We note that receptors containing wild-type or mutated ϵ subunits showed reduced sensitivity to inhibition by Zn^{2+} compared to $\alpha 1\beta 2$ receptors, an effect thought to be mediated by residues at the external end of TM2.

These findings motivated us to test the accessibility of TM2 residues to the cysteine-modifying reagent pCMB. The major finding of these experiments is that accessibility, as determined by changes in function, of ϵ -TM2 residues differs from that in $\alpha 1$ -TM2 or $\gamma 2L$ -TM2. Most relevantly, changes in function upon exposure to pCMB were observed in receptors containing the TM2-L9'C mutation in $\alpha 1$ and $\gamma 2L$ subunits but not in the ϵ subunit. At this time, we are unable to distinguish between the two most parsimonious possibilities: that the ϵ subunit differs in its secondary structure in TM2, or that the labeling of TM2-L9'C in the ϵ subunit lacks functional effect. Based on a previous report of the $\gamma 2S$ subunit serving as an external accessory subunit to modulate receptor properties in addition to acting as an integral subunit of the GABA_A receptor [49], we note the possibility of the ϵ subunit acting solely as an external modulatory subunit to the $\alpha 1\beta 2\epsilon$ receptor in oocytes injected with cRNA for $\alpha 1\beta 2\epsilon$.

In sum, we have shown here that the constitutively active rat $\alpha 1\beta 2\epsilon$ GABA_A receptor is inefficaciously activated by a number of orthosteric and allosteric agonists. Overexpression of the ϵ subunit was largely without effect on receptor properties. Results from mutagenesis and SCAM studies indicate significant differences in the properties of the TM2 domain in $\alpha 1$, $\gamma 2L$, and ϵ subunits.

Author Contributions: Conceptualization, G.A.; data curation, A.L.G., A.B.B. and S.R.P.; formal analysis, A.L.G., A.B.B. and S.R.P.; writing—original draft preparation, G.A.; writing—review and editing, A.L.G., A.B.B. and S.R.P.; funding acquisition, G.A. All authors have read and agreed to the published version of the manuscript.

Funding: This work was supported by the National Institutes of Health National Institute of General Medical Sciences [Grants GM108580; GM140947]; and funds from the Taylor Family Institute for Innovative Psychiatric Research.

Institutional Review Board Statement: Not applicable.

Informed Consent Statement: Not applicable.

Acknowledgments: We thank Maurice Garret for kindly providing the rat ϵ subunit clone, and Joe Henry Steinbach for valuable comments and advice during the course of the study.

Conflicts of Interest: The authors declare no conflict of interest.

Abbreviations

3 α 5 α P: 5 α -pregnan-3 α -ol-20-one (allopregnanolone); GABA, γ -aminobutyric acid; P_A, probability of being in the active state; P_{A, constitutive}, constitutive probability of being in the active state; pCMB, 4-(hydroxymercuri)benzoic acid sodium salt; TM, transmembrane.

References

1. Chua, H.C.; Chebib, M. GABA_A Receptors and the Diversity in their Structure and Pharmacology. *Adv. Pharmacol.* **2017**, *79*, 1–34. [[PubMed](#)]
2. Davies, P.A.; Hanna, M.C.; Hales, T.G.; Kirkness, E.F. Insensitivity to anaesthetic agents conferred by a class of GABA_A receptor subunit. *Nature* **1997**, *385*, 820–823. [[CrossRef](#)] [[PubMed](#)]
3. Whiting, P.J.; McAllister, G.; Vassilatis, D.; Bonnert, T.P.; Heavens, R.P.; Smith, D.W.; Hewson, L.; O'Donnell, R.; Rigby, M.R.; Sirinathsinghji, D.J.; et al. Neuronally restricted RNA splicing regulates the expression of a novel GABA_A receptor subunit conferring atypical functional properties [corrected; erratum to be published]. *J. Neurosci.* **1997**, *17*, 5027–5037. [[CrossRef](#)] [[PubMed](#)]
4. Sinkkonen, S.T.; Hanna, M.C.; Kirkness, E.F.; Korpi, E.R. GABA_A receptor ϵ and θ subunits display unusual structural variation between species and are enriched in the rat locus ceruleus. *J. Neurosci.* **2000**, *20*, 3588–3595. [[CrossRef](#)]
5. Moragues, N.; Ciofi, P.; Lafon, P.; Odessa, M.F.; Tramu, G.; Garret, M. cDNA cloning and expression of a γ -aminobutyric acid A receptor ϵ -subunit in rat brain. *Eur. J. Neurosci.* **2000**, *12*, 4318–4330.
6. Markus, F.; Angelini, C.; Trimouille, A.; Rudolf, G.; Lesca, G.; Goizet, C.; Lasseaux, E.; Arveiler, B.; van Slegtenhorst, M.; Brooks, A.S.; et al. Rare variants in the GABA_A receptor subunit ϵ identified in patients with a wide spectrum of epileptic phenotypes. *Mol. Genet. Genomic Med.* **2020**, *8*, e1388. [[CrossRef](#)]

7. Neelands, T.R.; Fisher, J.L.; Bianchi, M.; Macdonald, R.L. Spontaneous and γ -aminobutyric acid (GABA)-activated GABA_A receptor channels formed by ϵ subunit-containing isoforms. *Mol. Pharmacol.* **1999**, *55*, 168–178. [[CrossRef](#)]
8. Jones, B.L.; Henderson, L.P. Trafficking and potential assembly patterns of ϵ -containing GABA_A receptors. *J. Neurochem.* **2007**, *103*, 1258–1271. [[CrossRef](#)]
9. Mortensen, M.; Wafford, K.A.; Wingrove, P.; Ebert, B. Pharmacology of GABA_A receptors exhibiting different levels of spontaneous activity. *Eur. J. Pharmacol.* **2003**, *476*, 17–24. [[CrossRef](#)]
10. Ranna, M.; Sinkkonen, S.T.; Moykkynen, T.; Uusi-Oukari, M.; Korpi, E.R. Impact of ϵ and θ subunits on pharmacological properties of $\alpha 3\beta 1$ GABA_A receptors expressed in *Xenopus* oocytes. *BMC Pharmacol.* **2006**, *6*, 1. [[CrossRef](#)]
11. Wagner, D.A.; Goldschen-Ohm, M.P.; Hales, T.G.; Jones, M.V. Kinetics and spontaneous open probability conferred by the ϵ subunit of the GABA_A receptor. *J. Neurosci.* **2005**, *25*, 10462–10468. [[CrossRef](#)] [[PubMed](#)]
12. Irnaten, M.; Walwyn, W.M.; Wang, J.; Venkatesan, P.; Evans, C.; Chang, K.S.; Andresen, M.C.; Hales, T.G.; Mendelowitz, D. Pentobarbital enhances GABAergic neurotransmission to cardiac parasympathetic neurons, which is prevented by expression of GABA_A ϵ subunit. *Anesthesiology* **2002**, *97*, 717–724. [[CrossRef](#)]
13. Thompson, S.A.; Bonnert, T.P.; Cagetti, E.; Whiting, P.J.; Wafford, K.A. Overexpression of the GABA_A receptor ϵ subunit results in insensitivity to anaesthetics. *Neuropharmacology* **2002**, *43*, 662–668. [[CrossRef](#)]
14. Davies, P.A.; McCartney, M.R.; Wang, W.; Hales, T.G.; Kirkness, E.F. Alternative transcripts of the GABA_A receptor ϵ subunit in human and rat. *Neuropharmacology* **2002**, *43*, 467–475. [[CrossRef](#)]
15. Steinbach, J.H.; Akk, G. Applying the Monod-Wyman-Changeux Allosteric Activation Model to Pseudo-Steady-State Responses from GABA_A Receptors. *Mol. Pharmacol.* **2019**, *95*, 106–119. [[CrossRef](#)]
16. Forman, S.A. Monod-Wyman-Changeux allosteric mechanisms of action and the pharmacology of etomidate. *Curr. Opin. Anaesthesiol.* **2012**, *25*, 411–418. [[CrossRef](#)]
17. Eaton, M.M.; Germann, A.L.; Arora, R.; Cao, L.Q.; Gao, X.; Shin, D.J.; Wu, A.; Chiara, D.C.; Cohen, J.B.; Steinbach, J.H.; et al. Multiple Non-Equivalent Interfaces Mediate Direct Activation of GABA_A Receptors by Propofol. *Curr. Neuropharmacol.* **2016**, *14*, 772–780. [[CrossRef](#)]
18. Akabas, M.H.; Stauffer, D.A.; Xu, M.; Karlin, A. Acetylcholine receptor channel structure probed in cysteine-substitution mutants. *Science* **1992**, *258*, 307–310. [[CrossRef](#)]
19. Xu, M.; Akabas, M.H. Identification of channel-lining residues in the M2 membrane-spanning segment of the GABA_A receptor $\alpha 1$ subunit. *J. Gen. Physiol.* **1996**, *107*, 195–205. [[CrossRef](#)]
20. Germann, A.L.; Shin, D.J.; Manion, B.D.; Edge, C.J.; Smith, E.H.; Franks, N.P.; Evers, A.S.; Akk, G. Activation and modulation of recombinant glycine and GABA_A receptors by 4-halogenated analogues of propofol. *Br. J. Pharmacol.* **2016**, *173*, 3110–3120. [[CrossRef](#)]
21. Germann, A.L.; Pierce, S.R.; Senneff, T.C.; Burbridge, A.B.; Steinbach, J.H.; Akk, G. Steady-state activation and modulation of the synaptic-type $\alpha 1\beta 2\gamma 2L$ GABA_A receptor by combinations of physiological and clinical ligands. *Physiol. Rep.* **2019**, *7*, e14230. [[CrossRef](#)] [[PubMed](#)]
22. Akk, G.; Shin, D.J.; Germann, A.L.; Steinbach, J.H. GABA Type A Receptor Activation in the Allosteric Coagonist Model Framework: Relationship between EC₅₀ and Basal Activity. *Mol. Pharmacol.* **2018**, *93*, 90–100. [[CrossRef](#)] [[PubMed](#)]
23. Rusch, D.; Zhong, H.; Forman, S.A. Gating allosterism at a single class of etomidate sites on $\alpha 1\beta 2\gamma 2L$ GABA_A receptors accounts for both direct activation and agonist modulation. *J. Biol. Chem.* **2004**, *279*, 20982–20992. [[CrossRef](#)] [[PubMed](#)]
24. Lolait, S.J.; O'Carroll, A.M.; Kusano, K.; Muller, J.M.; Brownstein, M.J.; Mahan, L.C. Cloning and expression of a novel rat GABA_A receptor. *FEBS Lett.* **1989**, *246*, 145–148. [[CrossRef](#)]
25. Smart, T.G.; Moss, S.J.; Xie, X.; Huganir, R.L. GABA_A receptors are differentially sensitive to zinc: Dependence on subunit composition. *Br. J. Pharmacol.* **1991**, *103*, 1837–1839. [[CrossRef](#)]
26. Shin, D.J.; Germann, A.L.; Johnson, A.D.; Forman, S.A.; Steinbach, J.H.; Akk, G. Propofol is an allosteric agonist with multiple binding sites on concatemeric ternary GABA_A receptors. *Mol. Pharmacol.* **2018**, *93*, 178–189. [[CrossRef](#)]
27. Ruesch, D.; Neumann, E.; Wulf, H.; Forman, S.A. An allosteric coagonist model for propofol effects on $\alpha 1\beta 2\gamma 2L$ γ -aminobutyric acid type A receptors. *Anesthesiology* **2012**, *116*, 47–55. [[CrossRef](#)]
28. Germann, A.L.; Shin, D.J.; Kuhrau, C.R.; Johnson, A.D.; Evers, A.S.; Akk, G. High Constitutive Activity Accounts for the Combination of Enhanced Direct Activation and Reduced Potentiation in Mutated GABA_A Receptors. *Mol. Pharmacol.* **2018**, *93*, 468–476. [[CrossRef](#)]
29. Hosie, A.M.; Wilkins, M.E.; da Silva, H.M.; Smart, T.G. Endogenous neurosteroids regulate GABA_A receptors through two discrete transmembrane sites. *Nature* **2006**, *444*, 486–489. [[CrossRef](#)]
30. Bracamontes, J.; McCollum, M.; Esch, C.; Li, P.; Ann, J.; Steinbach, J.H.; Akk, G. Occupation of Either Site for the Neurosteroid Allopregnanolone Potentiates the Opening of the GABA_A Receptor Induced from Either Transmitter Binding Site. *Mol. Pharmacol.* **2011**, *80*, 79–86. [[CrossRef](#)]
31. Shin, D.J.; Germann, A.L.; Covey, D.F.; Steinbach, J.H.; Akk, G. Analysis of GABA_A receptor activation by combinations of agonists acting at the same or distinct binding sites. *Mol. Pharmacol.* **2019**, *95*, 70–81. [[CrossRef](#)]
32. Germann, A.L.; Pierce, S.R.; Tateiwa, H.; Sugawara, Y.; Reichert, D.E.; Evers, A.S.; Steinbach, J.H.; Akk, G. Intrasubunit and Intersubunit Steroid Binding Sites Independently and Additively Mediate $\alpha 1\beta 2\gamma 2L$ GABA_A Receptor Potentiation by the Endogenous Neurosteroid Allopregnanolone. *Mol. Pharmacol.* **2021**, *100*, 19–31. [[CrossRef](#)]

33. Ziemba, A.M.; Forman, S.A. Correction for Inhibition Leads to an Allosteric Co-Agonist Model for Pentobarbital Modulation and Activation of $\alpha 1\beta 3\gamma 2L$ GABA_A Receptors. *PLoS ONE* **2016**, *11*, e0154031. [[CrossRef](#)] [[PubMed](#)]
34. Chang, Y.; Wang, R.; Barot, S.; Weiss, D.S. Stoichiometry of a recombinant GABA_A receptor. *J. Neurosci.* **1996**, *16*, 5415–5424. [[CrossRef](#)]
35. Patel, B.; Mortensen, M.; Smart, T.G. Stoichiometry of δ subunit containing GABA_A receptors. *Br. J. Pharmacol.* **2014**, *171*, 985–994. [[CrossRef](#)] [[PubMed](#)]
36. Chang, Y.; Weiss, D.S. Allosteric activation mechanism of the $\alpha 1\beta 2\gamma 2$ γ -aminobutyric acid type A receptor revealed by mutation of the conserved M2 leucine. *Biophys. J.* **1999**, *77*, 2542–2551. [[CrossRef](#)]
37. Gurley, D.; Amin, J.; Ross, P.C.; Weiss, D.S.; White, G. Point mutations in the M2 region of the α , β , or γ subunit of the GABA_A channel that abolish block by picrotoxin. *Recept. Channels* **1995**, *3*, 13–20. [[PubMed](#)]
38. Sedelnikova, A.; Erkkila, B.E.; Harris, H.; Zakharkin, S.O.; Weiss, D.S. Stoichiometry of a pore mutation that abolishes picrotoxin-mediated antagonism of the GABA_A receptor. *J. Physiol.* **2006**, *577*, 569–577. [[CrossRef](#)]
39. Akk, G.; Eaton, M.; Li, P.; Zheng, S.; Lo, J.; Steinbach, J.H. Energetic contributions to channel gating of residues in the muscle nicotinic receptor $\beta 1$ subunit. *PLoS ONE* **2013**, *8*, e78539. [[CrossRef](#)]
40. Backstrom, T.; Andersson, A.; Andree, L.; Birzniece, V.; Bixo, M.; Bjorn, I.; Haage, D.; Isaksson, M.; Johansson, I.M.; Lindblad, C.; et al. Pathogenesis in menstrual cycle-linked CNS disorders. *Ann. N. Y. Acad. Sci.* **2003**, *1007*, 42–53. [[CrossRef](#)]
41. Hengen, K.B.; Nelson, N.R.; Stang, K.M.; Johnson, S.M.; Crader, S.M.; Watters, J.J.; Mitchell, G.S.; Behan, M. Increased GABA_A receptor ϵ -subunit expression on ventral respiratory column neurons protects breathing during pregnancy. *PLoS ONE* **2012**, *7*, e30608.
42. Belujon, P.; Baufreton, J.; Grandoso, L.; Boue-Grabot, E.; Batten, T.F.; Ugedo, L.; Garret, M.; Taupignon, A.I. Inhibitory transmission in locus coeruleus neurons expressing GABA_A receptor ϵ subunit has a number of unique properties. *J. Neurophysiol.* **2009**, *102*, 2312–2325. [[CrossRef](#)]
43. Sergeeva, O.A.; Andreeva, N.; Garret, M.; Scherer, A.; Haas, H.L. Pharmacological properties of GABA_A receptors in rat hypothalamic neurons expressing the ϵ -subunit. *J. Neurosci.* **2005**, *25*, 88–95. [[CrossRef](#)]
44. Hengen, K.B.; Behan, M.; Carey, H.V.; Jones, M.V.; Johnson, S.M. Hibernation induces pentobarbital insensitivity in medulla but not cortex. *Am. J. Physiol. Regul. Integr. Comp. Physiol.* **2009**, *297*, R1028–R1036. [[CrossRef](#)] [[PubMed](#)]
45. Hengen, K.B.; Gomez, T.M.; Stang, K.M.; Johnson, S.M.; Behan, M. Changes in ventral respiratory column GABA_AR ϵ - and δ -subunits during hibernation mediate resistance to depression by EtOH and pentobarbital. *Am. J. Physiol. Regul. Integr. Comp. Physiol.* **2011**, *300*, R272–R283. [[CrossRef](#)] [[PubMed](#)]
46. Pape, J.R.; Bertrand, S.S.; Lafon, P.; Odessa, M.F.; Chaigniau, M.; Stiles, J.K.; Garret, M. Expression of GABA_A receptor $\alpha 3$ -, θ -, and ϵ -subunit mRNAs during rat CNS development and immunolocalization of the ϵ subunit in developing postnatal spinal cord. *Neuroscience* **2009**, *160*, 85–96. [[CrossRef](#)]
47. Moragues, N.; Ciofi, P.; Tramu, G.; Garret, M. Localisation of GABA_A receptor ϵ -subunit in cholinergic and aminergic neurones and evidence for co-distribution with the θ -subunit in rat brain. *Neuroscience* **2002**, *111*, 657–669. [[CrossRef](#)]
48. Davies, P.A.; Kirkness, E.F.; Hales, T.G. Evidence for the formation of functionally distinct $\alpha\beta\gamma\epsilon$ GABA_A receptors. *J. Physiol.* **2001**, *537*, 101–113. [[CrossRef](#)]
49. Boileau, A.J.; Pearce, R.A.; Czajkowski, C. The short splice variant of the $\gamma 2$ subunit acts as an external modulator of GABA_A receptor function. *J. Neurosci* **2010**, *30*, 4895–4903. [[CrossRef](#)]