

Washington University School of Medicine

Digital Commons@Becker

2020-Current year OA Pubs

Open Access Publications

1-1-2022

The structural basis of long-term potentiation in hippocampal synapses, revealed by electron microscopy imaging of lanthanum-induced synaptic vesicle recycling

John E Heuser

Follow this and additional works at: https://digitalcommons.wustl.edu/oa_4



The Structural Basis of Long-Term Potentiation in Hippocampal Synapses, Revealed by Electron Microscopy Imaging of Lanthanum-Induced Synaptic Vesicle Recycling

John E. Heuser*

Department of Cell Biology and Physiology, Washington University School of Medicine, St. Louis, MO, United States

OPEN ACCESS

Edited by:

Shigeki Watanabe,
Johns Hopkins University,
United States

Reviewed by:

Naomi Kamasawa,
Max Planck Florida Institute
for Neuroscience (MPFI),
United States
Serap Sirvanci,
Marmara University, Turkey
Mark Terasaki,
University of Connecticut Health
Center, United States

*Correspondence:

John E. Heuser
jheuser@wustl.edu

Specialty section:

This article was submitted to
Cellular Neurophysiology,
a section of the journal
Frontiers in Cellular Neuroscience

Received: 14 April 2022

Accepted: 05 May 2022

Published: 01 August 2022

Citation:

Heuser JE (2022) The Structural Basis of Long-Term Potentiation in Hippocampal Synapses, Revealed by Electron Microscopy Imaging of Lanthanum-Induced Synaptic Vesicle Recycling. *Front. Cell. Neurosci.* 16:920360. doi: 10.3389/fncel.2022.920360

Hippocampal neurons in dissociated cell cultures were exposed to the trivalent cation lanthanum for short periods (15–30 min) and prepared for electron microscopy (EM), to evaluate the stimulatory effects of this cation on synaptic ultrastructure. Not only were characteristic ultrastructural changes of exaggerated synaptic vesicle turnover seen within the presynapses of these cultures—including synaptic vesicle depletion and proliferation of vesicle-recycling structures—but the overall architecture of a large proportion of the synapses in the cultures was dramatically altered, due to large postsynaptic “bulges” or herniations into the presynapses. Moreover, in most cases, these postsynaptic herniations or protrusions produced by lanthanum were seen by EM to distort or break or “perforate” the so-called postsynaptic densities (PSDs) that harbor receptors and recognition molecules essential for synaptic function. These dramatic EM observations lead us to postulate that such PSD breakages or “perforations” could very possibly create essential substrates or “tags” for synaptic growth, simply by creating fragmented free edges around the PSDs, into which new receptors and recognition molecules could be recruited more easily, and thus, they could represent the physical substrate for the important synaptic growth process known as “long-term potentiation” (LTP). All of this was created simply in hippocampal dissociated cell cultures, and simply by pushing synaptic vesicle recycling way beyond its normal limits with the trivalent cation lanthanum, but we argued in this report that such fundamental changes in synaptic architecture—given that they can occur at all—could also occur at the extremes of normal neuronal activity, which are presumed to lead to learning and memory.

Keywords: hippocampal synapses, synaptic vesicle, endocytosis, lanthanum, long-term potentiation, postsynaptic densities (PSDs)

INTRODUCTION

Of all the important structural features of the synapse that have been viewed in the electron microscope over the decades, a feature that has been the most correlated with long-term potentiation (LTP), especially in the context of electron microscopy (EM) preparations generated from hippocampal tissues that were experimentally manipulated into LTP conditions,

would have to be the *perforated postsynaptic density* (or *perforated PSD*).

It was the research work of one of the leading electron microscopists of the hippocampus, Yuri Geinisman, to establish this correlation (Geinisman et al., 1986, 1987a,b, 1991, 1992a,b, 1993, 1994, 1996; Geinisman, 1993, 2000). Another top electron microscopist of the hippocampus, Kirsten Harris, reported *perforated PSDs* almost as often, but remained more agnostic about their role in hippocampal LTP (Harris and Stevens, 1989; Chicurel and Harris, 1992; Spacek and Harris, 1997; Sorra et al., 1998; Fiala et al., 2002; Harris et al., 2003; Spacek and Harris, 2004; Bourne and Harris, 2011; Bailey et al., 2015; Watson et al., 2016). Likewise, two other top EM labs that published a lot on the hippocampus, Michael Stewart's in Milton Keynes, England (Dhanrajan et al., 2004; Popov et al., 2004; Stewart et al., 2005a,b; Medvedev et al., 2010), and Dominique Muller's in Geneva, Switzerland (Stoppini et al., 1991; Toni et al., 1999, 2001; Luscher et al., 2000), reported finding *perforated PSDs* in a lot of publications and also made outstanding contributions toward understanding how these might be involved in LTP or "synaptic learning" (Stoppini et al., 1991; Toni et al., 1999, 2001; Luscher et al., 2000; Dhanrajan et al., 2004; Popov et al., 2004; Stewart et al., 2005a,b; Medvedev et al., 2010). All this history culminated with the later, outstandingly beautiful cryo-EM work on this same topic, which came from Michael Frotscher's lab in Freiberg, Germany (Zhao et al., 2012a,b,c). Along the way, and right up to the present day, many other EM labs have weighed in with valuable correlative data and their own ideas on how LTP might come about (Tarrant and Routtenberg, 1977; Calverley and Jones, 1987a,b; Petit et al., 1989; Markus et al., 1994; Neuhoff et al., 1999; Kennedy, 2016, 2018; Sun et al., 2021), and numerous reviews of perforated synapses have been published (although without any serious attempt to correlate them with learning or memory) (Petralia et al., 2015, 2016, 2017, 2018, 2021).

At hippocampal synapses, the postsynaptic densities or PSDs are ordinarily disk-shaped entities that are generally located directly across from presynaptic neurotransmitter release sites (Gray, 1959, 1976; Blomberg et al., 1977; Cohen et al., 1977; Cohen and Siekevitz, 1978; Carlin et al., 1980; Dosemeci et al., 2001; Tao-Cheng et al., 2009; High et al., 2015). They generally appear almost *continuous* in thickness and density across the breadth of the disk, and even though recent close inspections have begun to suggest that each PSD disk may have a sub-structure, and may be composed of sub-modules or "nanomodules" (MacGillavry et al., 2013; Broadhead et al., 2016; Zeng et al., 2016; Biederer et al., 2017; Chen et al., 2018, 2020; Crosby et al., 2019; Trotter et al., 2019; Obashi et al., 2021; Ramsey et al., 2021; Wegner et al., 2022), these PSD components pack closely enough together to create the general impression in the EM of a continuous plaque or a disk.

"Perforated" PSDs, in contrast, are variable in outline. They look more like irregular and discontinuous patches in the EM, but they are presumed to be composed of the same components that are found in the more normal, continuous PSD disks. Reviewing the aforementioned references, one can find a wide range of thoughts about them, everything from conclusions that such "perforated" PSDs are in the process of division of one plaque

into two (ultimately to form two different postsynaptic spines, in some of the bolder claims), to conclusions that they are simply a by-product of synaptic activity. But overall, "perforated" PSDs have generally been interpreted as synapses-in-augmentation, as would be expected if they were the structural correlates of the synaptic enhancement that is presumed by everyone to be the fundamental basis of LTP (Bliss and Gardner-Medwin, 1973; Bliss and Lomo, 1973; Carlin and Siekevitz, 1983; Lomo, 2003, 2018; Bailey et al., 2015).

In this report, we presented serendipitous observations that could help to explain exactly how "bursts" of presynaptic activity could cause perforated PSDs to form, in the first place. Specifically, we argued that these bursts of presynaptic activity could create delays in the process of synaptic vesicle recycling, which could make the presynapse expand in surface area, and do in such a manner that it could actually strain and break the normal plaque-like PSD into a "perforated" PSD.

Our EM images were obtained from primary (dissociated cell) hippocampal cultures prepared by classical techniques (Skrede and Westgaard, 1971; Schwartzkroin and Wester, 1975; Ransom et al., 1977; Mayer et al., 1989; Lu et al., 1998; Scott et al., 2001; Blanpied et al., 2002). These were chemically stimulated *via* direct application of low doses (0.1 mM) of the trivalent cation, lanthanum (La + + +). This magical trivalent cation has been used to stimulate spontaneous neurosecretion in many different preparations over the past half century (Miledi, 1971; Curtis et al., 1986; Coniglio et al., 1993; Powis et al., 1994; Powis and Clark, 1996; Lerner et al., 2006; Chung et al., 2008; Wasser and Kavalali, 2009; Ramirez and Kavalali, 2011), but still, no one knows exactly *how or why* it does so, especially because it is generally considered to be a "super calcium" that actually *blocks* most calcium channels, and thus blocks most calcium-evoked neurosecretory phenomena, it does not *stimulate* them (dos Remedios, 1981; Lansman, 1990; Reichling and MacDermott, 1991; Meir et al., 1998).

When we first faced this conundrum 50 years ago (the conundrum of why lanthanum blocks calcium-induced neurosecretion but hugely stimulates *spontaneous* transmitter release, in the form of huge bursts of miniature endplate potentials or "m.e.p.p.'s" at the NMJ), we simply could not explain it, but nevertheless we "used" the phenomenon to deplete synaptic vesicles from frog neuromuscular junctions, and thus to expose for the first time the resultant membranous transformations that turned out to represent synaptic vesicle recycling (Heuser and Miledi, 1971; Heuser, 1976, 1989a,b). Our scientific colleagues in those days quickly followed suit, and also used lanthanum to show that a dramatic expansion of the presynaptic membrane can accompany this spontaneous lanthanum-induced transmitter discharge, due to a slowdown of synaptic vesicle recycling and accumulation of vesicle membrane on the presynaptic surface (von Wedel et al., 1981; Jones et al., 1982; Segal et al., 1985; Robitaille and Tremblay, 1987; Torri-Tarelli et al., 1987, 1990; Valtorta et al., 1988). In fact, we intend to show here—by classical thin-section EM—that it is this presynaptic *expansion*, which is most dramatic in hippocampal cultures, and furthermore, that the unique distortion(s) which this expansion creates on the postsynaptic side of hippocampal

synapses can greatly help to explain *how and why* their PSDs can become perforated during enhanced synaptic activity.

RESULTS

Structural Evidence of Lanthanum's Stimulatory Effects

A total of 57 separate experiments were performed with lanthanum on hippocampal cultures, adjusting the time of exposure (5–30 min), the dose of lanthanum (0.1–1 mM), the level of calcium counter ions (0–1 mM), and the method of fixation for EM (glutaraldehyde in cacodylate buffer vs. in Hepes buffer). Such classical dissociated cell hippocampal cultures invariably display a huge range of synaptic types, only vaguely reflecting the characteristic and stereotypical forms of synapses observed in the intact hippocampus or in hippocampal slices (Skrede and Westgaard, 1971; Schwartzkroin and Wester, 1975; Ransom et al., 1977; Mayer et al., 1989; Lu et al., 1998; Scott et al., 2001; Blanpied et al., 2002). Nevertheless, most of the synapses that manage to reform in such dissociated cell cultures fall into two major categories: bouton-like (e.g., onto dendritic protrusions that are generally described as primitive “spines”), and plaque-like (e.g., directly onto the shafts of the primitive, disoriented dendrites in such cultures). The former types of synapses typically have single PSD plaques that are generally considered to be “excitatory.” These are the so-called “*asymmetric*” synapses, due to their relatively thick PSDs. The latter typically display 2 or 3 adjacent plaques in the dendritic shaft and are generally considered “inhibitory.” These are the so-called “*symmetric*” synapses, due to their relatively thin and often barely perceptible PSDs (Gray, 1959, 1976; Blomberg et al., 1977; Cohen et al., 1977; Cohen and Siekevitz, 1978; Carlin et al., 1980; Dosemeci et al., 2001; Tao-Cheng et al., 2009; High et al., 2015).

Lanthanum promptly changes the appearance of both bouton-like and plaque-like presynaptic terminals, replacing many of their synaptic vesicles with clathrin-coated vesicles, even in the first 5–10 min after application, and at later times, leaves many of these presynaptic terminals almost empty, or at best, partially filled with irregular membrane forms (as well as residual clathrin-coated vesicles and “empty cages”) (Figures 1–6). Essentially, these are the structural changes that we observed originally at the frog NMJ (Heuser and Miledi, 1971; Heuser, 1976, 1989a,b), which initiated the whole idea that synaptic vesicle membrane could be recycled, and that we have recently been able to observe in mammalian NMJs as well (Heuser and Tenkova, 2020).

Consequences of Lanthanum's Stimulatory Effects Projected Onto the Postsynapse

Most unexpected, however, was the dramatic change in the overall configuration of these cultured synapses, a configuration that began to appear in lanthanum at 10 min, and peaked in abundance at 20 min (and seemed to die down by 30 min). This was manifested as a discrete “bulge” of the postsynapse, directly into the midst of the presynaptic terminal (Figures 1–6).

Generally, the postsynaptic protrusions observed in lanthanum occupy a considerable portion of the presynaptic cytoplasm, and draw a considerable mass of postsynaptic cytoplasm into them. In the EM, this bolus of cytoplasm generally appears featureless, or appears finely mesh-like in appearance. It does not look like an active, actin-based growth from the postsynapse, but more like a passive inclusion, only occasionally containing any recognizable postsynaptic membranous organelle.

It is important to consider one clue as to *how or why* these protrusions form in the first place. This comes from closely examining the membrane of the *presynapse* that forms the protrusion (or we could say in the *invagination*, when considered from the presynaptic side). It typically displays all the “spikes” and “clathrin cage fragments” seen in other regions of the presynapse that are undergoing rapid and abundant clathrin-coated vesicle formation. That is, it looks in the EM as if the presynaptic membrane is “committed to endocytosis” in these involutions, or is “trying” to perform endocytosis in the regions that have been drawn inwards into the protrusion.

Unique Positioning of the Postsynaptic Protrusions and Distortions

Perhaps the most important aspect of these postsynaptic protrusions in the present context, however,—that of considering their possible role in LTP—is that they typically occur *right in the midst* of the PSD. As a consequence, they occasionally drag portions of the PSD inward as they form, depositing these PSD fragments along the “necks” of the invaginations. More often, however, PSD components appear to be excluded from these invaginations—to somehow “hang back”—such that the PSD becomes perforated or partitioned by the invagination.

How or why these invaginations form *right in the midst* of the PSD—rather than around its edges, for example, where one might imagine the membranes to be more “flexible”—is one of the great mysteries that emerges from this study, and remains to be answered.

DISCUSSION

Clues About How and Why the Postsynaptic Protrusions Develop

The hypothesis that emerges from these observations is that overly exuberant presynaptic expansion and attempts at endocytosis are “deforming” their active zones and producing the inward membrane bulges that perforate the PSD (Figure 7). Support for this hypothesis came from our attempts to duplicate the effects of lanthanum on these cultures with other sorts of chemical stimulation of them (either by the applying the excitatory neurotransmitter NMDA, or by elevating potassium to depolarize all the cells in the culture). But neither of these forms of stimulation induced any such protrusions or inward invaginations of their postsynapses, but the most they showed was the slight change in PSD curvature that has

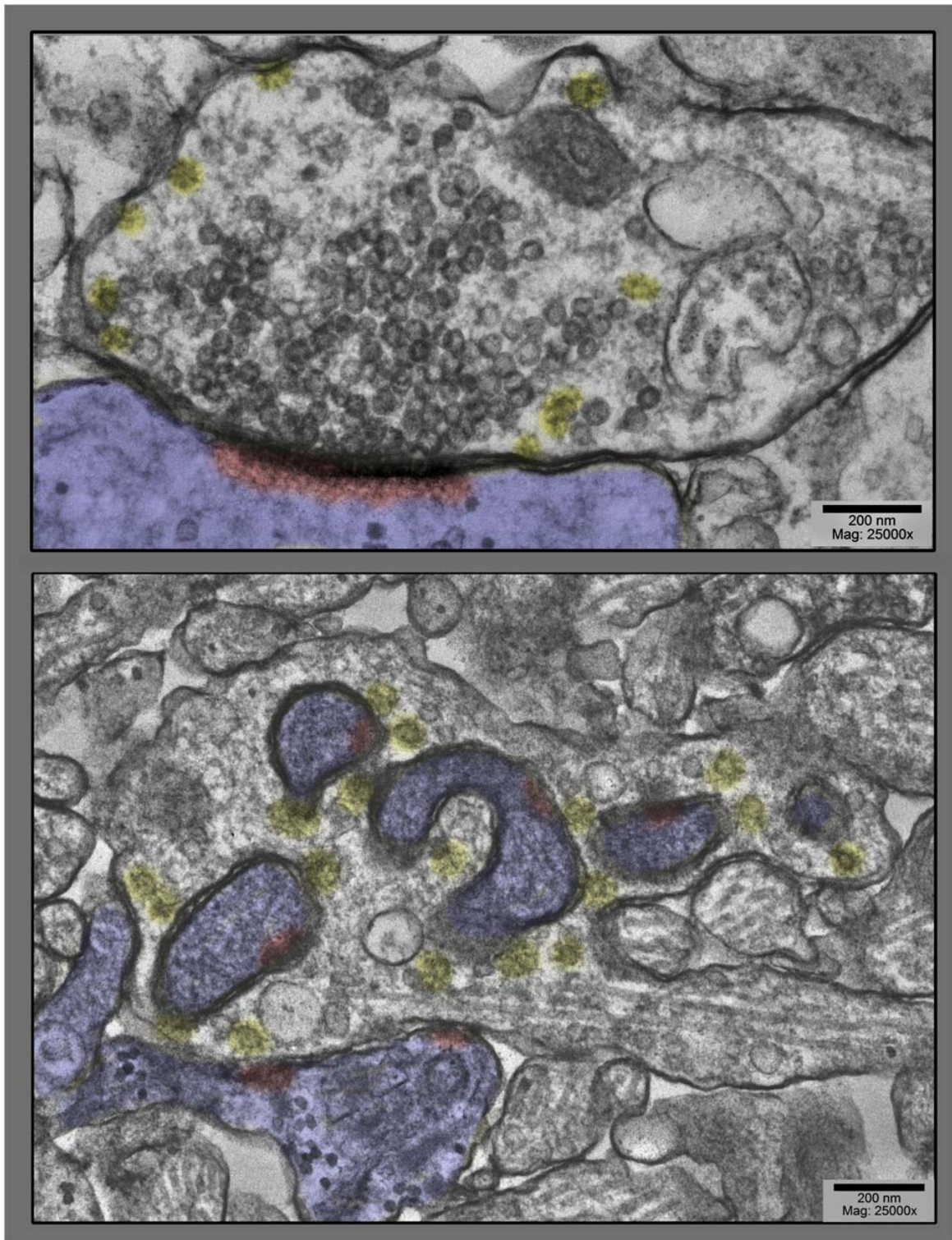


FIGURE 1 | Upper panel shows a prototypical spine synapse from a control hippocampal culture, a culture not stimulated at all. Abundant synaptic vesicles are collected on the presynaptic side, converging on a solid, disk or plaque-like postsynaptic density (highlighted in red, inside the postsynapse, which is highlighted in blue in this and all subsequent figures). Only a few clathrin-coated vesicles are present (highlighted in yellow), and only at the periphery of the vesicle cluster. Lower panel shows, by way of contrast, a dramatically different spine synapse from a hippocampal culture exposed to 0.1 mM La + + + for 20 min at 37°C. Synaptic vesicles are severely depleted, clathrin-coated vesicles (yellow) are unusually abundant, and the postsynapse (highlighted in blue) has “protruded” into the presynapse at several places, dragging along only fragments of the PSD (highlighted in red).

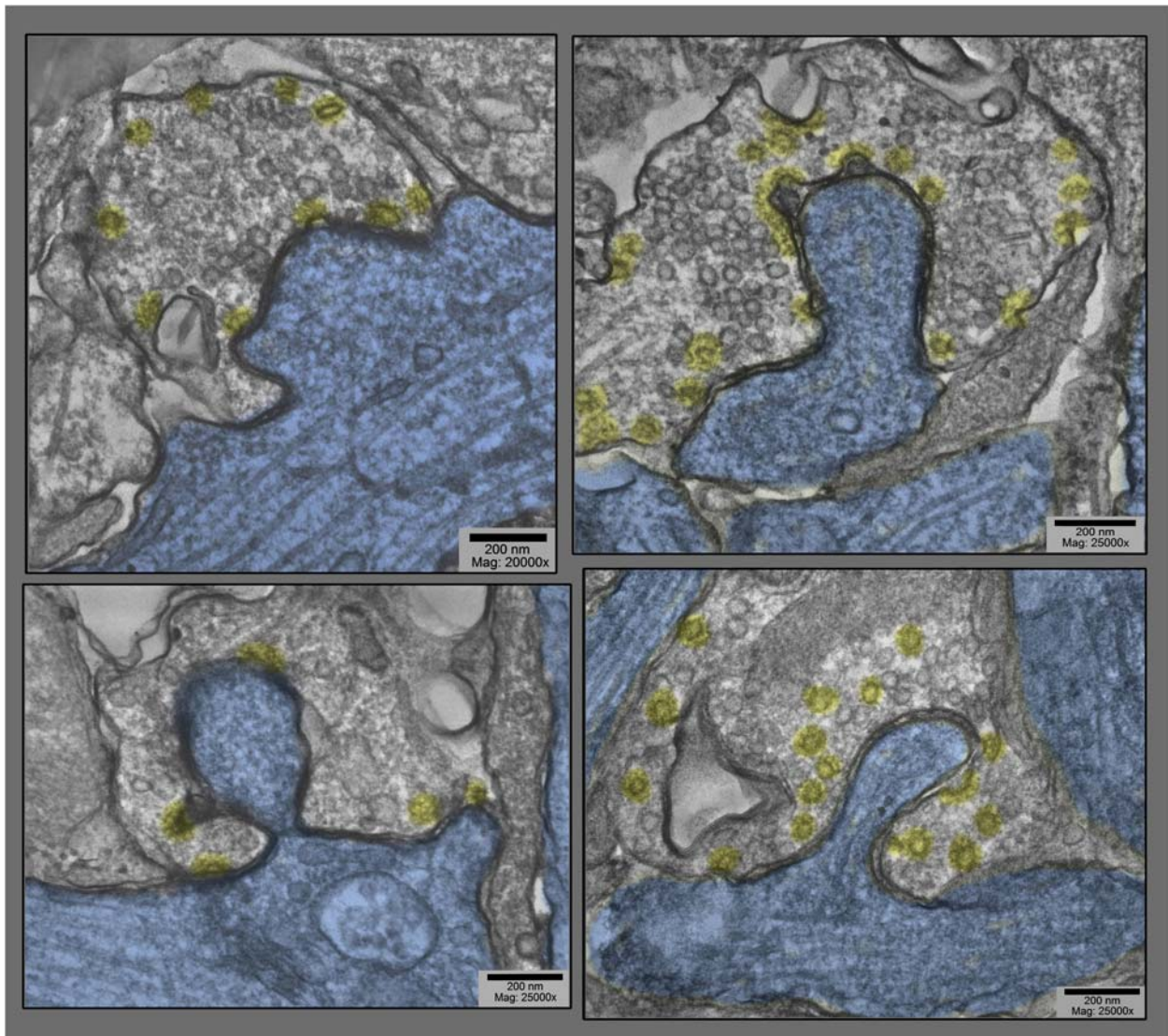


FIGURE 2 | Examples of dendritic shaft synapses in hippocampal cultures exposed to 0.1 mM La⁺⁺⁺ for 10–20 min at 37°C. Synaptic vesicles are more or less depleted, but in all cases, clathrin-coated vesicles (presumably involved in the recycling of synaptic vesicle membrane) are increased in abundance, especially along the borders of the postsynaptic “protrusions” (highlighted in blue). Being shaft synapses (thus presumably inhibitory or Gray’s type II), the PSDs are not prominent in these fields and thus are not highlighted in red.

been reported earlier (Dyson and Jones, 1980; Markus and Petit, 1989; Petit et al., 1989; Markus et al., 1994; Tao-Cheng et al., 2007; Tao-Cheng, 2019). We would argue that this was probably because the synapses in these NMDA or K⁺-stimulated cultures were not driven out of their “comfort zones,” the zones where they could adequately compensate for their enhanced transmitter release (and their enhanced synaptic vesicle exocytosis) by commensurately accelerating their membrane recycling processes, so that they stayed effectively “in balance,” and did not develop any net accumulation of synaptic vesicle membrane on their surfaces, and thus did not expand in surface area (and consequently, did not attempt to “embrace” the postsynapse or support any postsynaptic protrusions).

Indeed, we may learn someday that the most important reason for why lanthanum stimulation is so effective at expanding the surfaces of nerve terminals and bringing out signs of synaptic vesicle recycling is that it somehow slows down this membrane recycling, at the same time that it stimulates transmitter release, itself. This may someday be explained by several different mechanisms: for example, by some sort of “stiffening” of the presynaptic membrane or by La⁺⁺⁺ tending to “glue” the presynaptic membrane to the extracellular matrix, or possibly by blocking sodium and calcium entry through the presynaptic membrane, which may in some way *directly* slow down some aspect of the recycling process. Indeed, there is a large body of evidence, which suggests that clathrin-coated vesicle formation

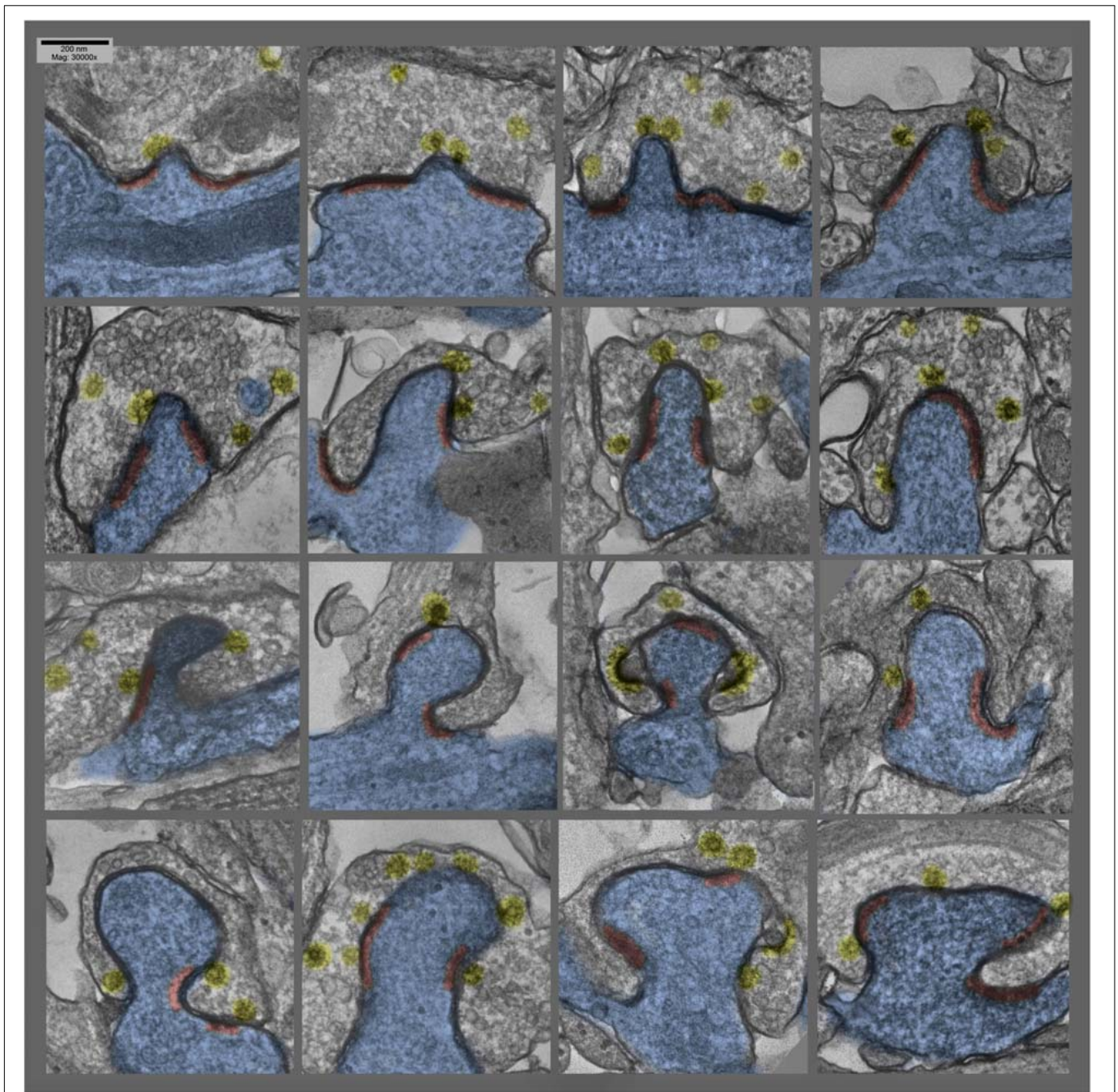


FIGURE 3 | Montage of several different postsynaptic “protrusions” (or presynaptic “hugs,” depending on one’s vantage point) in hippocampal cultures exposed to 0.1 mM La +++ for 10–20 min at 37°C. Synaptic vesicles are more or less depleted, and clathrin-coated vesicles (again highlighted in yellow) are relatively abundant, and PSDs (highlighted in red) are hanging back or are fragmented and “holding on” to the edges of the postsynaptic protrusions.

and/or synaptic vesicle recycling is somehow dependent on intracellular Ca^{++} being at just the right level (Henkel and Betz, 1995; Neale et al., 1999; Vogel et al., 1999; Teng and Wilkinson, 2003; Zefirov et al., 2006; Yao et al., 2009; Morton et al., 2015; Miyano et al., 2019; Bourgeois-Jaarsma et al., 2021; Jiang et al., 2021). In any case, it is abundantly clear from the present observations and from the past work that lanthanum somehow creates a greater imbalance between exocytosis and endocytosis

than any other form of synaptic stimulation, and consequently, produces the most enhanced accumulation of synaptic vesicle membrane on the presynaptic surface, and thus, the greatest expansion of the presynaptic membrane.

In this respect, these synaptic perturbations in lanthanum-stimulated hippocampal cultures show a remarkable parallel with the abundant, multiple, and florid invaginations of the presynaptic membrane that were seen so many decades ago in

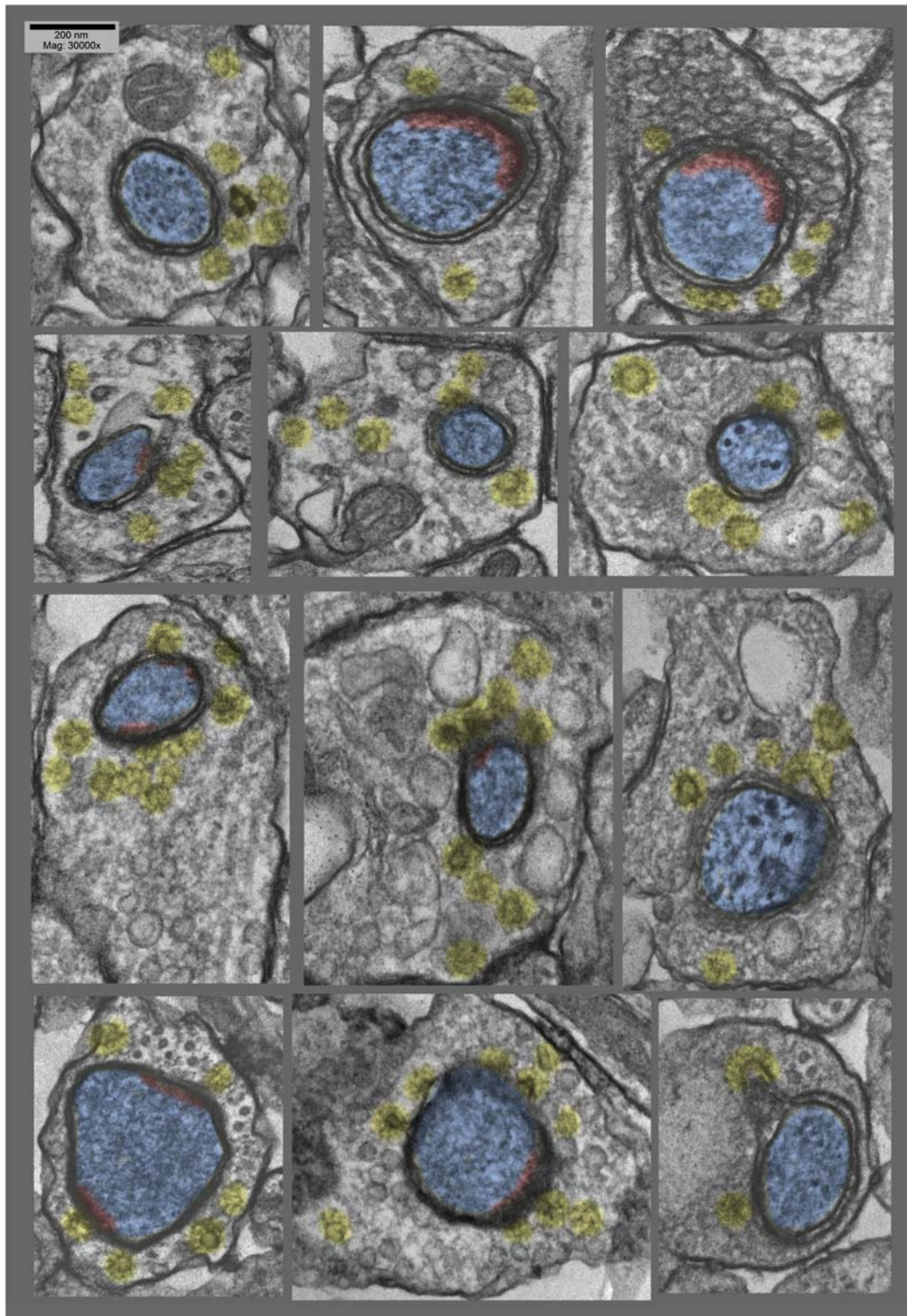


FIGURE 4 | Montage of cross sections of several other postsynaptic “protrusions” or presynaptic “hugs,” from the same hippocampal cultures as in **Figure 3** (exposed to 0.1 mM La⁺⁺⁺ for 10–20 min at 37°C). Again, it is quite apparent that synaptic vesicles are more or less depleted, compared with the relative abundance of clathrin-coated vesicles (highlighted in yellow). Again, PSDs (highlighted in red) appear to be relatively fragmented or absent from these deeper regions of the postsynaptic involutions.

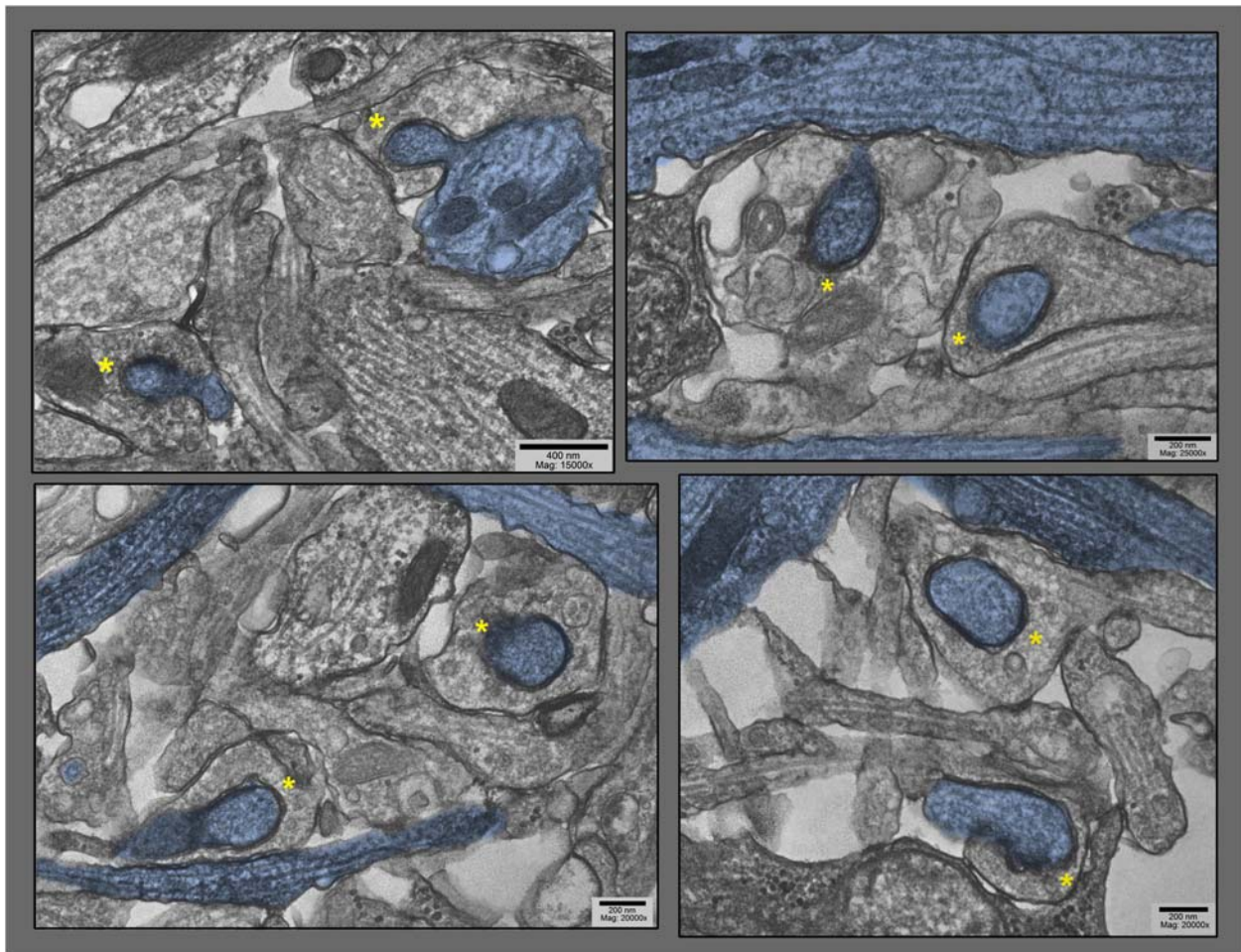


FIGURE 5 | Lower magnification survey views of hippocampal cultures exposed to 0.1 mM La + + + for 10–20 min at 37°C), where only the particular dendrites that are invading into their apposed synapses are highlighted in blue (other dendrites are also present in these fields). These views were chosen specifically to demonstrate the old adage that George Palade, the great “founder” of biological electron microscopy, always stressed: namely, that if a structural feature could be found *two or more times in one and the same field of view* in the electron microscope, then it must be generally present, and must be not an artifact. Two postsynaptic “protrusions” are indicated by asterisks in each field.

frog NMJs treated with lanthanum (Heuser and Miledi, 1971; Heuser, 1976, 1989a,b). These were *also* studied with endocytic profiles, and the thinking at that time was the same as today—that lanthanum caused such an unremitting stimulation of the NMJ that endocytosis became exhausted and “blocked” at that point, or at least greatly slowed down, such that it left much of the discharged synaptic vesicle membrane on the surface of the presynaptic terminal, and thereby *expanding* that surface. A lot of good immunocytochemistry was done in the ensuing decades, which entirely supported this view (von Wedel et al., 1981; Jones et al., 1982; Segal et al., 1985; Robitaille and Tremblay, 1987; Torri-Tarelli et al., 1987, 1990; Valtorta et al., 1988).

The important difference between the changes seen here, in lanthanum-stimulated hippocampal synapses, compared with the old NMJ observations, is that the *postsynapse proper* is pulled into the presynapse. This cannot happen at the NMJ, where the presynapse is separated from the postsynapse by a thick

and rigid basal lamina. Instead, at the NMJ, the surrounding Schwann cell gets pulled into the invaginations—or one could say, the Schwann cell ends up “protruding” into the presynaptic terminal. (In this regard, it is worth noting that we observed no such “drawing inward” of surrounding glial processes in any of our lanthanum-stimulated hippocampal cultures. This at least partly due to the simple fact that there are not very many glial processes around the synapses in our cultures, in the first place; and the few glial cells that do happen to be there may have very little “give.”) Quite different is the situation at all NMJs, where Schwann cells totally embrace the whole nerve terminal, except at its immediate contact with the muscle, and where the Schwann cells are highly redundant and “plastic,” so they actively fill in any convolutions of the presynaptic membrane that develop during stimulation. Interestingly, in the primary neuron cultures from the De Camilli lab, their endocytosis-inhibited genotypes show both glial and postsynaptic involutions when the synapses are

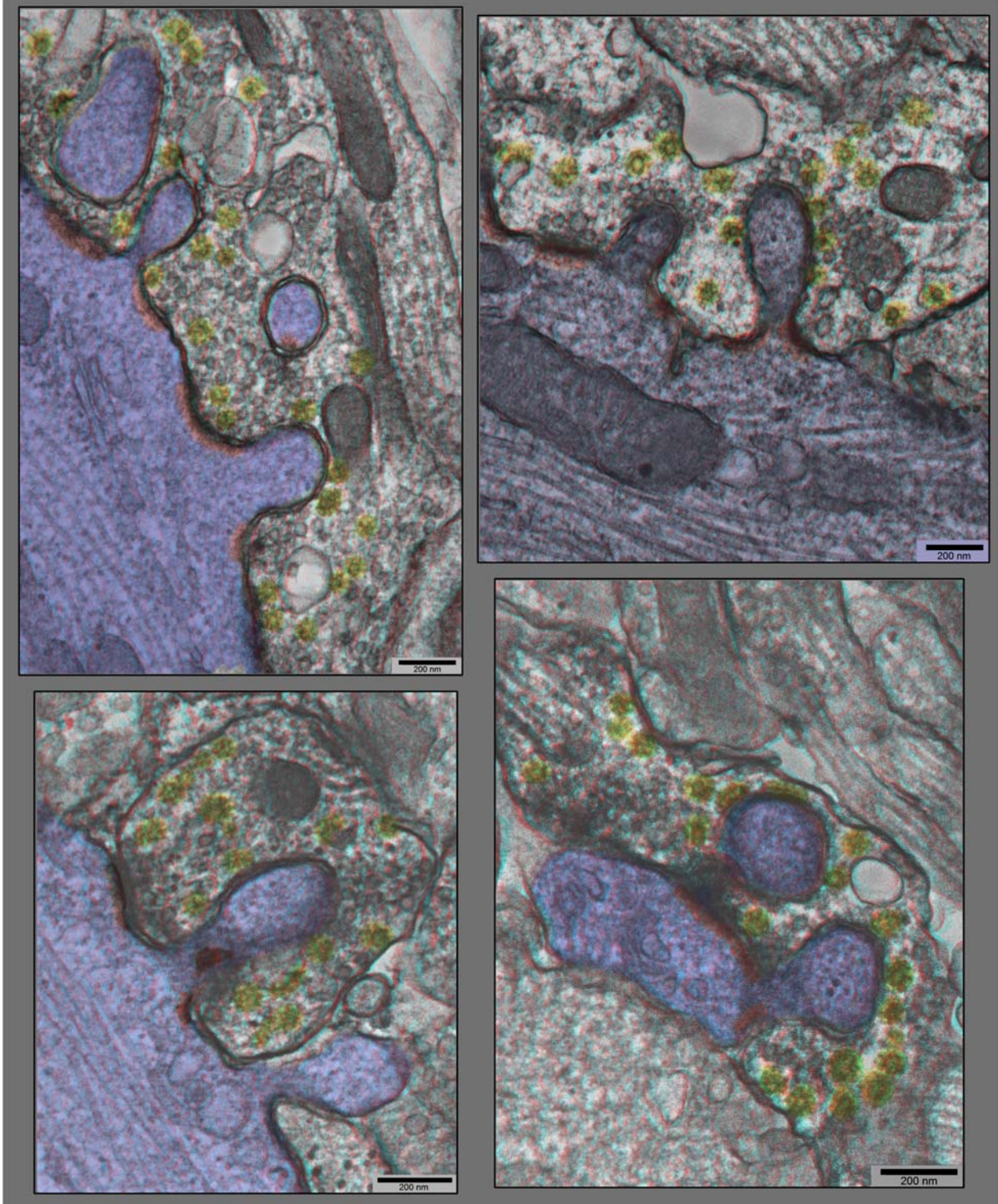
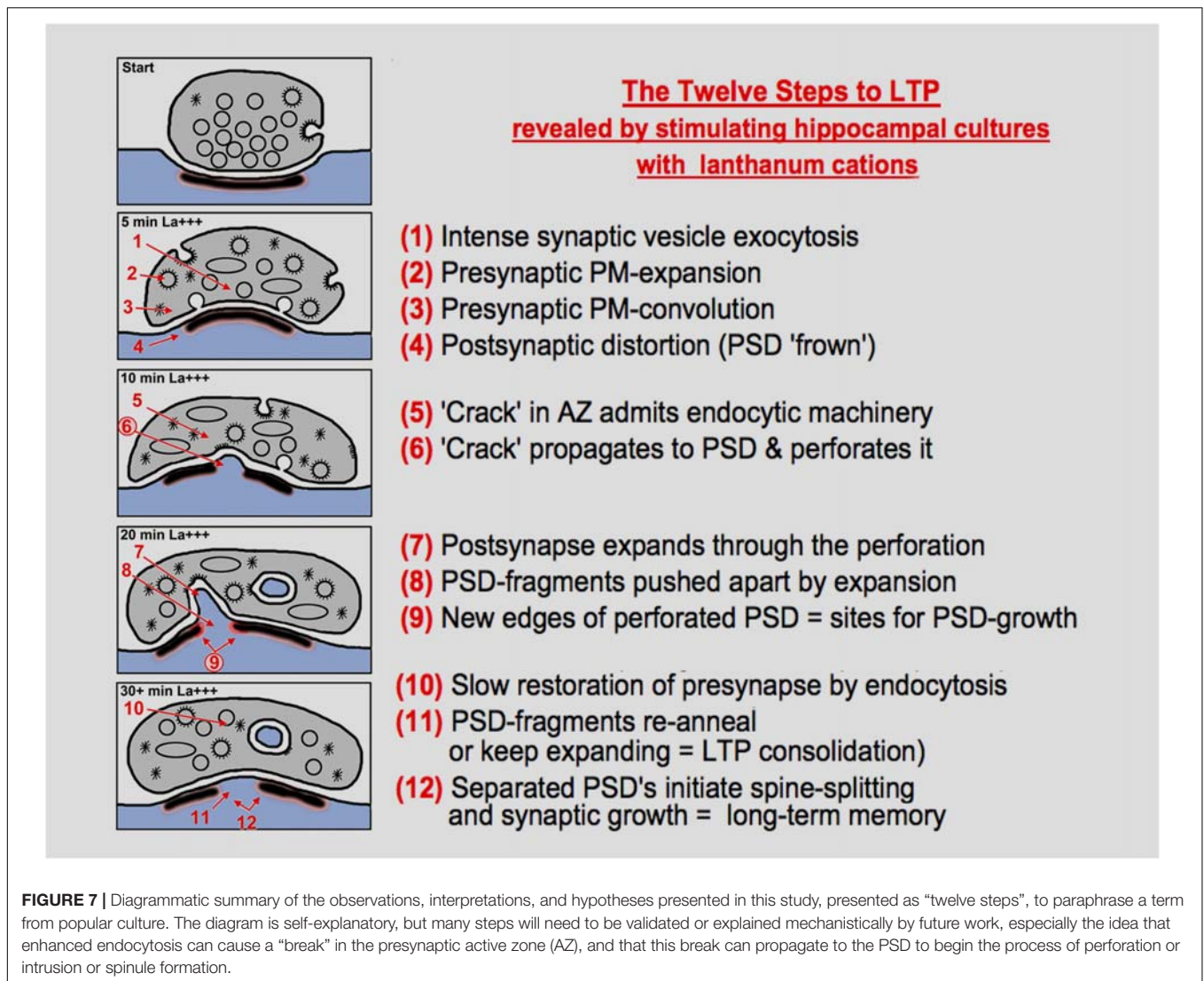


FIGURE 6 | “Anaglyph” 3D views of additional synapses in hippocampal cultures exposed to 0.1 mM La⁺⁺⁺ for 10–20 min at 37°C, from plastic blocks that were cut thicker (at 120–150 nm), and photographed at +20° and –20° of tilt in the EM, then superimposed to make the 3–D “anaglyphs”. These require red/green “anaglyph” glasses to fully appreciate, but even without, it is still readily apparent that synaptic vesicles are relatively depleted, coated vesicles are relatively abundant (yellow), and postsynaptic densities are relatively fragmented (PSDs highlighted in red, and dendrites highlighted in blue).



stimulated (Hayashi et al., 2008, Milosevic et al., 2011, Wu et al., 2014).

Comparing Classical Postsynaptic “Spinules” With the Protrusions and Distortions Seen Here in Lanthanum

There is no good reason to think that the so-called synaptic “spinules” described in many previous studies of hippocampal synapses (referenced in paragraph 1, above) can or should be differentiated from the *fatter* postsynaptic protrusions into the presynapse that we described here, as being the consequences of lanthanum stimulation. *Neither* type of invagination contains any postsynaptic structure that would suggest they were “active” invasions into the presynapse. In other words, *neither* type contains any signs of actin, nor any other cytoskeletal component might suggest that they actively push their way into the presynapse. Instead, the EMs presented here show clearly that both “spinules” and their fatter counterparts invade regions of the

presynapse that show all the signs of being engaged in clathrin-mediated endocytosis. As explained above, this dedication to endocytosis is reason enough to understand why the presynapse should be involuted at those sites. But it also suggests that the spinules and their fatter counterparts, the postsynaptic protrusions, are not *actively splitting* the PSDs as they invade the presynapse. Again, their lack of contractile/propulsive machinery would seem to rule this out. Instead, this PSD splitting appears to be a *passive* process, almost an inadvertent consequence of the presynaptic involution, itself (inadvertent, except that it perhaps was selected by nature to be the fundamental “growth” event of LTP!!).

It is worth stressing here that both “spinules” and the fatter protrusions display uniformly close approximations of pre- and post-membranes, in their midst—the important point being that these are *closer* approximations than those observed at the AZ/PSD differentiations of the synapse *per se*, where so many spanning and attachment molecules are known to be located (and are known to be so abundant and strong that

they can even hold the pre- and post-membranes together during homogenization of nervous tissue) (Blomberg et al., 1977; Cohen et al., 1977; Cohen and Siekevitz, 1978; Carlin et al., 1980; Dosemeci et al., 2001). All these specific synaptic attachment proteins have spanning lengths of ~15–20 nm, which are *greater* than the pre-to-post-membrane separation seen at the protrusions/involutions under question (~10 nm). Indeed, this 10 nm separation distance that we observed in all the protrusion sites is the normal “minimum” found everywhere in the neuropil of our hippocampal cultures, e.g., between glia and neuronal elements, and between undifferentiated neural elements and each other. (Of course, this “minimum” is not *nearly* close enough to suggest electrical coupling, or anything of that sort.) In any case, this is one more indication that the protrusions are not pulling in the PSDs and their associated attachment proteins with them; rather, they are *splitting* the PSDs, and leaving these attachment proteins behind.

Here, we should add the qualification that despite the obvious structural parallels between synaptic spinules and their fatter counterparts displayed here, nothing in our studies to date would suggest that a precursor/product relationship exists between them. While both seem clearly to be exacerbated or accentuated by synaptic stimulation, the *timing* of this stimulation varies over several orders of magnitude (from just a few minutes in the present study of acute, ongoing chemical stimulation) to hours or longer, in previous studies characterizing the long-term aftereffects of LTP induction, as listed above. In other words, it is not (yet) possible to suggest that spinules grow into fatter protrusions as they invade, or that fat protrusions shrink down to spinules as they withdraw. These possibilities await further experimental discussion and analysis.

CONCLUSION AND FUTURE PERSPECTIVES

The simple observations and interpretations offered here provide a rationale for why such discontinuous or broken-apart PSDs could very likely represent the physical substrate of the temporary “tagging” of synapses that is generally thought to be so important for *initiating* the whole process of LTP (Frey and Morris, 1997, 1998a,b; Martin and Kosik, 2002; Redondo and Morris, 2011; Shires et al., 2012; Evans et al., 2021). This initiation is thought to prepare the synapse for later, long-term enhancement *via* new protein synthesis, which is presumed by all to be the consolidating event that culminates LTP (Bliss and Gardner-Medwin, 1973; Bliss and Lomo, 1973; Carlin and Siekevitz, 1983; Lomo, 2003, 2018; Bailey et al., 2015).

The rationale would be that the breakup of solid plaques or disks of PSD would create *new edges* where “modules” or molecular components of postsynaptic receptors, channels, and signaling molecules could be added, to enlarge or even create completely new PSD plaques. In other words, that the discontinuities and irregularities in the PSD created by the act of perforation, due to the exacerbation of synaptic vesicle recycling in the presynapse, would create additional (and new) *free edges* around the plaques—which originally had, by the simple fact

that they were disk-like—had the *minimum* number of free edges possible, for a given collection of receptors (Figure 7).

The logical conclusion to draw from this seems to be that newly generated PSD “free edges” represent the synaptic “tags” that initiate LTP (Frey and Morris, 1997, 1998a,b; Martin and Kosik, 2002; Redondo and Morris, 2011; Shires et al., 2012; Evans et al., 2021). Although we did not attempt in this study to provide the complete structural evidence for this hypothesis, we predict that it should soon become available from many of the new LM and EM methods that are being developed to “tag” various presynaptic and postsynaptic proteins and protein complexes (MacGillavry et al., 2013; Broadhead et al., 2016; Zeng et al., 2016; Biederer et al., 2017; Chen et al., 2018, 2020; Crosby et al., 2019; Trotter et al., 2019; Obashi et al., 2021; Ramsey et al., 2021; Wegner et al., 2022). Here, we focused only on providing direct EM images that demonstrated how (and why) enhanced bursts of presynaptic secretory activity apparently *create* or *cause* the perforation of otherwise plaque-like postsynaptic densities, in the first place.

MATERIALS AND METHODS

Cell Culture

Dissociated cell hippocampal cultures were prepared from papain-dissociated hippocampi, which were harvested from embryonic day 20 rat fetuses, then plated onto confluent glial feeder cultures on 22 mm glass coverslips, and grown for 3–4 weeks before use. Throughout this growth period, the culture medium was half-exchanged 3 × weekly with fresh medium containing MEM (with Earle’s salts, 6 g/L glucose, and 3.7 g/L sodium bicarbonate) supplemented with 5% (v/v) heat-inactivated horse serum, 2% (v/v) fetal bovine serum, and 2 mM Glutamax (all from Life Technologies), along with 136 μM uridine and 54 μM 2-deoxy-5-fluoro-uridine (from Sigma), plus N3 supplement from Sigma (which contains BSA, apotransferrin, putrescine, selenium, T3, insulin, progesterone, and corticosterone) (for further details, see Ransom et al., 1977; Mayer et al., 1989). Throughout this time, the coverslips were maintained in P35 culture dishes in a 36°C incubator with 10% CO₂.

Culture Treatments

To conduct the experiments, the culture dishes containing the coverslips were removed from the CO₂ incubator and *immediately* washed with a bicarbonate and phosphate-free “Ringers” solution. [removing bicarbonate so that the cultures did not alkalinize in room air, with its low CO₂, and removing phosphate so that the subsequent application of lanthanum did not just precipitate as La(PO₄)₃]. Henceforth, they were maintained on a rotating platform in a 37°C water bath. After three more washes in HCO₃ and PO₄-free “Ringers,” for a total time of 12 min, the cultures were then exposed to a “Ringers” solution containing 0.1 mM LaCl₃ (with its usual CaCl₂ reduced from the usual 2 mM CaCl₂ to only 1 mM, to minimize any competition of Ca + + with the La + + +). Alternatively, cultures were treated for 5–15 min at 37°C with high K⁺ [a

“Ringers” containing 90 mM KCl (whose osmolarity had been compensated by reducing the concentration of NaCl)], or treated for 5–10 min at 37°C with 50–60 μ M of N-methyl-D-aspartic acid (NMDA) in normal HCO₃-free “Ringers,” but containing our usual 2 mM of CaCl₂ and 3 mM of NaH₂PO₄.

Fixation and Processing

Primary fixation was accomplished by replacing the Ringers solution in the culture dishes with 2% glutaraldehyde, freshly dissolved from a 50% stock (from EMS, Inc.) into a “substitute Ringer’s,” where the normal 5 mM Hepes buffer concentration was increased 6 \times for fixation purposes (and NaCl was decreased commensurately, to keep the solution isotonic). Most important at this point was to wash away the La + + + and restore the normal 2 mM calcium in the medium, to prevent any La + + + precipitates in the extracellular spaces of the cultures. (Indeed, this 2 mM calcium is maintained *throughout* primary fixation and postfixation, because we believe that it helps to minimize cellular membrane deterioration).

Immediately after the exchange into the glutaraldehyde, the culture dishes were placed on a vigorously rotating table, and the fixative was exchanged one or two more times, to ensure rapid and uniform fixation. (Even though this aldehyde fixation was probably complete in just a few minutes, we still left the cultures in fixative for another 1–2 h, or even overnight, before initiating postfixation).

The sequence of postfixation was as follows. (This was all done at room temperature, because we believe that cooling biological membranes to 4°C at any time during fixation damages cellular membranes.) First, the glutaraldehyde and Hepes buffer was washed away with 100 mM cacodylate buffer, with two exchanges over a period of at least 15–30 min. (This buffer always contained the same 2 mM Ca + +, in this and all subsequent steps, so it will henceforth be termed “Cacodylate-Ca”). Next, the cultures were postfixed with 0.25% OsO₄ and 0.25% potassium ferocyanide in Cacodylate-Ca buffer (made fresh, by mixing 0.5% OsO₄ with 0.5% KFeCN₆ immediately before use) for exactly 30 min, no longer. Then, after washing away the OsO₄ with fresh Cacodylate-Ca buffer (for 5–10 min), the cultures were “mordanted” with 0.5% tannic acid (mw 1,700) in Cacodylate-Ca buffer (making sure to use a batch of tannic acid from EMS or from Polysciences that did not precipitate over time), for 30 min only, no longer. Finally, after washing away the tannate with fresh Cacodylate-Ca buffer, the pH over the cultures was dropped by a brief wash in 100 mM acetate buffer at pH 5.2, to prepare them for “block-staining” with 0.5% uranyl acetate in this acetate buffer (pH 5.2 being the natural pH of dissolved UA, anyway). Then, after this block-staining, they were very briefly washed again in acetate buffer to remove the UA, and finally progressively dehydrated with ethanol in the usual manner (sequential 5–10 min rinses in 50, 75, 95, and 100% ethanol).

Epoxy Embedding and Thin-Sectioning

Thereafter, the coverslips were removed from the P35 culture dishes to polypropylene bottles, where they could be embedded in Araldite 502 epoxy resin (the old “English Araldite”), *via* an intermediate transfer from ethanol into propylene oxide, then

into two-thirds of Araldite and one-third of propylene oxide. (The bottles were needed because the propylene oxide would have dissolved in the original P35 culture dishes). Finally, the fully infiltrated cultures still in their polypropylene bottles were covered with a 10–12 mm deep layer of freshly prepared Araldite 502 epoxy resin and vacuum-embedded in a 70°C vacuum oven, using a strong mechanical pump to draw off all air until the Araldite formed small bubbles (from release of residual propylene oxide and ethanol), and after readmission of air, were left for 24–48 h to fully polymerize.

When fully hardened, the polypropylene bottles were removed from the oven, broken with pliers to release the Araldite blocks, and the blocks were cut with a jeweler’s saw into pieces appropriate for mounting at the desired orientation of the ultramicrotome. Finally, the original glass coverslips on which the cultures were grown were dissolved off of the Araldite by a brief (5–10) min dip into full-strength hydrofluoric acid (47% HF), followed by a number of washes.

Blocks were initially sectioned at 0.5–1.0 μ m and stained with 1% toluidine blue and 1% sodium borate in water for 15 s on a hot plate, to examine in the LM and to orient further block-trimming for thin-sectioning.

Electron Microscopy

Thin sections were cut at 40 nm to obtain the crispest views of membranes, at 90 nm for best general overviews, and at 150–200 nm to obtain 3D information about the overall deployment of synapses in the cultures. Thin sections were picked up on high-transmission fine hexagonal 200-mesh copper grids (made in England by Guilder, Ltd., and sold in the US by Ladd Industries, cat. no. G200HHC), after the grids had been coated with a silver thin film of Formvar, and then carbon-coated by 10 s of vacuum-evaporated carbon, for maximum specimen stability. Finally, sections were stained for 5 min drops of 1% lead citrate (in a closed dish with NaOH pellets around to prevent CO₂ precipitation of the lead).

They were then examined in a standard TEM operated at 80 kV and mounted with the smallest available objective aperture, for maximum contrast (and maximum removal of chromatic aberration from the thicker sections). They were photographed with the highest resolution digital camera possible, regardless of sensitivity, as such Araldite sections were essentially indestructible and could tolerate endless electron bombardment. (We generally used the AMT “BioSprint” 29 Megapixel Camera, due to its many superior operating features, as well as its very clear 6.5k \times 4.5k images). The final digital images were processed and colorized with Photoshop, taking special advantage of its “high-pass” filter when very dark features happened to be located next to very light areas in the images, which made details hard to see. (We typically set the high-pass filter at 40 pixels for our 6,500 \times 4,500 pixel AMT images, and layered this filtered image on top of the original image, at 50% density).

Postscript

We find it absolutely marvelous that over 45 years ago, Sally Tarrant and Aryeh Routtenberg, from Northwestern University’s

Neuroscience Laboratory in Chicago, had the prescience and foresight to add the following *tiny and obscure footnote* to their fine study, a study in which they described and discussed “synaptic spinules” in the brains of rats they had prepped for EM by perfusion with Karnovsky’s fixative. The footnote was as follows:

P.S. “It is also possible that the ‘synaptic spinule’ represents an active synapse and that the presynaptic invagination represents the coalescence of synaptic vesicles and the coated vesicle a device for membrane recycling (Heuser and Reese, 1973). The spine apparatus might contribute to the postsynaptic membrane as it protrudes into the presynaptic membrane invagination.” Tarrant and Routtenberg (1977).

DATA AVAILABILITY STATEMENT

The raw data supporting the conclusions of this article will be made available by the authors, without undue reservation.

ETHICS STATEMENT

The animal study was reviewed and approved by the Animal Use and Care Committee of the National Institute of Neurological Disorders and Stroke (NINDS) (Animal protocol Number: ASP1159).

REFERENCES

- Bailey, C. H., Kandel, E. R., and Harris, K. M. (2015). Structural components of synaptic plasticity and memory consolidation. *Cold Spring Harb. Perspect. Biol.* 7:a021758. doi: 10.1101/cshperspect.a021758
- Biederer, T., Kaeser, P. S., and Blanpied, T. A. (2017). Transcellular nanoalignment of synaptic function. *Neuron* 96, 680–696. doi: 10.1016/j.neuron.2017.10.006
- Blanpied, T. A., Scott, D. B., and Ehlers, M. D. (2002). Dynamics and regulation of clathrin coats at specialized endocytic zones of dendrites and spines. *Neuron* 36, 435–449. doi: 10.1016/s0896-6273(02)00979-0
- Bliss, T. V., and Gardner-Medwin, A. R. (1973). Long-lasting potentiation of synaptic transmission in the dentate area of the unanaesthetized rabbit following stimulation of the perforant path. *J. Physiol.* 232, 357–374. doi: 10.1113/jphysiol.1973.sp010274
- Bliss, T. V., and Lomo, T. (1973). Long-lasting potentiation of synaptic transmission in the dentate area of the anaesthetized rabbit following stimulation of the perforant path. *J. Physiol.* 232, 331–356. doi: 10.1113/jphysiol.1973.sp010273
- Blomberg, F., Cohen, R. S., and Siekevitz, P. (1977). The structure of postsynaptic densities isolated from dog cerebral cortex. II. Characterization and arrangement of some of the major proteins within the structure. *J. Cell Biol.* 74, 204–225. doi: 10.1083/jcb.74.1.204
- Bourgeois-Jaarsma, Q., Miaja Hernandez, P., and Groffen, A. J. (2021). Ca(2+) sensor proteins in spontaneous release and synaptic plasticity: limited contribution of Doc2c, rabphilin-3a and synaptotagmin 7 in hippocampal glutamatergic neurons. *Mol. Cell Neurosci.* 112:103613. doi: 10.1016/j.mcn.2021.103613
- Bourne, J. N., and Harris, K. M. (2011). Coordination of size and number of excitatory and inhibitory synapses results in a balanced structural plasticity along mature hippocampal CA1 dendrites during LTP. *Hippocampus* 21, 354–373. doi: 10.1002/hipo.20768

AUTHOR CONTRIBUTIONS

JH wrote, read, and approved the final manuscript.

FUNDING

This study was supported by the National Institute of Neurological Disorders and Stroke (NINDS) intramural funds and the National Institute of Child Health and Human Development (NICHD) intramural funds.

ACKNOWLEDGMENTS

We thank Christine A. Winters (from the Laboratory of Neurobiology, NINDS, NIH) for kindly producing and supplying us with all the gorgeous and healthy hippocampal dissociated cell cultures that were used in this study. We thank Tatyana Tenkova-Heuser, M.D., for preparing all these cultures for electron microscopy, and for cutting all the thin-sections used in this study. We thank Thomas S. Reese for providing workspace and reagents to carry out these experiments in his Laboratory of Neurobiology, NINDS, NIH. Finally, for our salary support, we also thank Joshua Zimmerberg, head of the Section on Integrative Biophysics in the National Institute of Child Health and Human Development (NICHD).

- Broadhead, M. J., Horrocks, M. H., Zhu, F., Muresan, L., Benavides-Piccione, R., DeFelipe, J., et al. (2016). PSD95 nanoclusters are postsynaptic building blocks in hippocampus circuits. *Sci. Rep.* 25:24626. doi: 10.1038/srep24626
- Calverley, R. K., and Jones, D. G. (1987a). A serial-section study of perforated synapses in rat neocortex. *Cell Tissue Res.* 247, 565–572. doi: 10.1007/BF00215750
- Calverley, R. K., and Jones, D. G. (1987b). Determination of the numerical density of perforated synapses in rat neocortex. *Cell Tissue Res.* 248, 399–407. doi: 10.1007/BF00218208
- Carlin, R. K., and Siekevitz, P. (1983). Plasticity in the central nervous system: do synapses divide? *Proc. Natl. Acad. Sci. U.S.A.* 80, 3517–3521. doi: 10.1073/pnas.80.11.3517
- Carlin, R. K., Grab, D. J., Cohen, R. S., and Siekevitz, P. (1980). Isolation and characterization of postsynaptic densities from various brain regions: enrichment of different types of postsynaptic densities. *J. Cell Biol.* 86, 831–845. doi: 10.1083/jcb.86.3.831
- Chen, H., Tang, A., and Blanpied, T. A. (2018). Subsynaptic spatial organization as a regulator of synaptic strength and plasticity. *Curr. Opin. Neurobiol.* 51, 147–153. doi: 10.1016/j.conb.2018.05.004
- Chen, J. H., Blanpied, T. A., and Tang, A. H. (2020). Quantification of trans-synaptic protein alignment: a data analysis case for single-molecule localization microscopy. *Methods* 174, 72–80. doi: 10.1016/j.ymeth.2019.07.016
- Chicurel, M. E., and Harris, K. M. (1992). Three-dimensional analysis of the structure and composition of ca3 branched dendritic spines and their synaptic relationships with mossy fiber boutons in the rat hippocampus. *J. Comp. Neurol.* 325, 169–182. doi: 10.1002/cne.903250204
- Chung, C., Deak, F., and Kavalali, E. T. (2008). Molecular substrates mediating lanthanide-evoked neurotransmitter release in central synapses. *J. Neurophysiol.* 100, 2089–2100. doi: 10.1152/jn.90404.2008
- Cohen, R. S., and Siekevitz, P. (1978). Form of the postsynaptic density. A serial section study. *J. Cell Biol.* 78, 36–46. doi: 10.1083/jcb.78.1.36

- Cohen, R. S., Blomberg, F., Berzins, K., and Siekevitz, P. (1977). The structure of postsynaptic densities isolated from dog cerebral cortex. I. Overall morphology and protein composition. *J. Cell Biol.* 74, 181–203. doi: 10.1083/jcb.74.1.181
- Coniglio, L. M., Hendricks, G. M., and Parsons, R. L. (1993). Effects of lanthanum at snake twitch and tonic muscle fibre endplates. *J. Physiol.* 466, 405–419.
- Crosby, K. C., Gookin, S. E., Garcia, J. D., Hahm, K. M., Dell'Acqua, M. L., and Smith, K. R. (2019). Nanoscale subsynaptic domains underlie the organization of the inhibitory synapse. *Cell Rep.* 26, 3284.e3–3297.e3. doi: 10.1016/j.celrep.2019.02.070
- Curtis, M. J., Quastel, D. M., and Saint, D. A. (1986). Lanthanum as a surrogate for calcium in transmitter release at mouse motor nerve terminals. *J. Physiol.* 373, 243–260. doi: 10.1113/jphysiol.1986.sp016045
- Dhanrajani, T. M., Lynch, M. A., Kelly, A., Popov, V. I., Rusakov, D. A., and Stewart, M. G. (2004). Expression of long-term potentiation in aged rats involves perforated synapses but dendritic spine branching results from high-frequency stimulation alone. *Hippocampus* 14, 255–264. doi: 10.1002/hipo.10172
- dos Remedios, C. G. (1981). Lanthanide ion probes of calcium-binding sites on cellular membranes. *Cell Calcium* 2, 29–51. doi: 10.1016/0143-4160(81)90044-0
- Dosemeci, A., Tao-Cheng, J. H., Vinade, L., Winters, C. A., Pozzo-Miller, L., and Reese, T. S. (2001). Glutamate-induced transient modification of the postsynaptic density. *Proc. Natl. Acad. Sci. U.S.A.* 98, 10428–10432. doi: 10.1073/pnas.181336998
- Dyson, S. E., and Jones, D. G. (1980). Quantitation of terminal parameters and their inter-relationships in maturing central synapses: a perspective for experimental studies. *Brain Res.* 183, 43–59. doi: 10.1016/0006-8993(80)90118-3
- Evans, H. T., Blackmore, D., Gotz, J., and Bodea, L. G. (2021). De novo proteomic methods for examining the molecular mechanisms underpinning long-term memory. *Brain Res. Bull.* 169, 94–103. doi: 10.1016/j.brainresbull.2020.12.015
- Fiala, J. C., Allwardt, B., and Harris, K. M. (2002). Dendritic spines do not split during hippocampal LTP or maturation. *Nat. Neurosci.* 5, 297–298. doi: 10.1038/nn830
- Frey, U., and Morris, R. G. (1997). Synaptic tagging and long-term potentiation. *Nature* 385, 533–536. doi: 10.1038/385533a0
- Frey, U., and Morris, R. G. (1998a). Synaptic tagging: implications for late maintenance of hippocampal long-term potentiation. *Trends Neurosci.* 21, 181–188. doi: 10.1016/s0166-2236(97)01189-2
- Frey, U., and Morris, R. G. (1998b). Weak before strong: dissociating synaptic tagging and plasticity-factor accounts of late-LTP. *Neuropharmacology* 37, 545–552. doi: 10.1016/s0028-3908(98)00040-9
- Geinisman, Y. (1993). Perforated axospinous synapses with multiple, completely partitioned transmission zones: probable structural intermediates in synaptic plasticity. *Hippocampus* 3, 417–433. doi: 10.1002/hipo.450030404
- Geinisman, Y. (2000). Structural synaptic modifications associated with hippocampal LTP and behavioral learning. *Cereb. Cortex* 10, 952–962. doi: 10.1093/cercor/10.10.952
- Geinisman, Y., de Toledo-Morrell, L., and Morrell, F. (1986). Aged rats need a preserved complement of perforated axospinous synapses per hippocampal neuron to maintain good spatial memory. *Brain Res.* 398, 266–275. doi: 10.1016/0006-8993(86)91486-1
- Geinisman, Y., deToledo-Morrell, L., and Morrell, F. (1991). Induction of long-term potentiation is associated with an increase in the number of axospinous synapses with segmented postsynaptic densities. *Brain Res.* 566, 77–88. doi: 10.1016/0006-8993(91)91683-r
- Geinisman, Y., deToledo-Morrell, L., and Morrell, F. (1994). Comparison of structural synaptic modifications induced by long-term potentiation in the hippocampal dentate gyrus of young adult and aged rats. *Ann. N.Y. Acad. Sci.* 747, 452–466. doi: 10.1111/j.1749-6632.1994.tb44428.x
- Geinisman, Y., deToledo-Morrell, L., Morrell, F., Heller, R. E., Rossi, M., and Parshall, R. F. (1993). Structural synaptic correlate of long-term potentiation: formation of axospinous synapses with multiple, completely partitioned transmission zones. *Hippocampus* 3, 435–445. doi: 10.1002/hipo.450030405
- Geinisman, Y., deToledo-Morrell, L., Morrell, F., Persina, I. S., and Rossi, M. (1992a). Structural synaptic plasticity associated with the induction of long-term potentiation is preserved in the dentate gyrus of aged rats. *Hippocampus* 2, 445–456. doi: 10.1002/hipo.450020412
- Geinisman, Y., Morrell, F., and deToledo-Morrell, L. (1992b). Increase in the number of axospinous synapses with segmented postsynaptic densities following hippocampal kindling. *Brain Res.* 569, 341–347. doi: 10.1016/0006-8993(92)90649-t
- Geinisman, Y., Detoleto-Morrell, L., Morrell, F., Persina, I. S., and Beatty, M. A. (1996). Synapse restructuring associated with the maintenance phase of hippocampal long-term potentiation. *J. Comp. Neurol.* 368, 413–423. doi: 10.1002/(SICI)1096-9861(19960506)368:3<413::AID-CNE7<3.0.CO;2-8
- Geinisman, Y., Morrell, F., and de Toledo-Morrell, L. (1987a). Synapses on dendritic shafts exhibit a perforated postsynaptic density. *Brain Res.* 422, 352–356. doi: 10.1016/0006-8993(87)90943-7
- Geinisman, Y., Morrell, F., and de Toledo-Morrell, L. (1987b). Axospinous synapses with segmented postsynaptic densities: a morphologically distinct synaptic subtype contributing to the number of profiles of 'perforated' synapses visualized in random sections. *Brain Res.* 423, 179–188. doi: 10.1016/0006-8993(87)90838-9
- Gray, E. G. (1959). Axo-somatic and axo-dendritic synapses of the cerebral cortex: an electron microscope study. *J. Anat.* 93(Pt 4), 420–333.
- Gray, E. G. (1976). Problems of understanding the substructure of synapses. *Prog. Brain Res.* 45, 207–234. doi: 10.1016/S0079-6123(08)60992-9
- Harris, K. M., and Stevens, J. K. (1989). Dendritic spines of CA 1 pyramidal cells in the rat hippocampus: serial electron microscopy with reference to their biophysical characteristics. *J. Neurosci.* 9, 2982–2997. doi: 10.1523/JNEUROSCI.09-08-02982.1989
- Harris, K. M., Fiala, J. C., and Ostroff, L. (2003). Structural changes at dendritic spine synapses during long-term potentiation. *Philos. Trans. R. Soc. Lond. B Biol. Sci.* 358, 745–748. doi: 10.1098/rstb.2002.1254
- Hayashi, M., Raimondi, A., O'Toole, E., Paradise, S., Collesi, C., Cremona, O., et al. (2008). Cell and stimulus dependent heterogeneity of synaptic vesicle endocytic recycling mechanisms revealed by studies of dynamin 1-null neurons. *Proc. Natl. Acad. Sci. U.S.A.* 105, 2175–2180. doi: 10.1073/pnas.0712171105
- Henkel, A. W., and Betz, W. J. (1995). Monitoring of black widow spider venom (BWSV) induced exo- and endocytosis in living frog motor nerve terminals with FM1-43. *Neuropharmacology* 34, 1397–1406. doi: 10.1016/0028-3908(95)00126-q
- Heuser, J. E. (1976). "Morphology of synaptic vesicle discharge and reformation at the frog neuromuscular junction," in *The Motor Innervation of Muscle*, ed. S. Thesleff (London: Academic Press), 51–115. doi: 10.1113/jphysiol.1975.sp010926
- Heuser, J. E. (1989a). The role of coated vesicles in recycling of synaptic vesicle membrane. *Cell Biol. Int. Rep.* 13, 1063–1076. doi: 10.1016/0309-1651(89)90020-9
- Heuser, J. E. (1989b). Review of electron microscopic evidence favouring vesicle exocytosis as the structural basis for quantal release during synaptic transmission. *Q. J. Exp. Physiol.* 74, 1051–1069. doi: 10.1113/expphysiol.1989.sp003333
- Heuser, J. E., and Miledi, R. (1971). Effects of lanthanum ions on function and structure of frog neuromuscular junctions. *Proc. R. Soc. Lond. B Biol. Sci.* 179, 247–260. doi: 10.1098/rspb.1971.0096
- Heuser, J. E., and Reese, T. S. (1973). Evidence for recycling of synaptic vesicle membrane during transmitter release at the frog neuromuscular junction. *J. Cell Biol.* 57, 315–344. doi: 10.1083/jcb.57.2.315
- Heuser, J. E., and Tenkova, T. I. (2020). Introducing a mammalian nerve-muscle preparation ideal for physiology and microscopy, the transverse auricular muscle in the ear of the mouse. *Neuroscience* 439, 80–105. doi: 10.1016/j.neuroscience.2019.07.028
- High, B., Cole, A. A., Chen, X., and Reese, T. S. (2015). Electron microscopy tomography reveals discrete transact elements at excitatory and inhibitory synapses. *Front. Synaptic Neurosci.* 7:9. doi: 10.3389/fnsyn.2015.00009
- Jiang, Z. J., Li, W., Yao, L. H., Saed, B., Rao, Y., Grewe, B. S., et al. (2021). TRPM7 is critical for short-term synaptic depression by regulating synaptic vesicle endocytosis. *Elife* 10:e66709. doi: 10.7554/eLife.66709
- Jones, R. T., Walker, J. H., Stadler, H., and Whittaker, V. P. (1982). Immunohistochemical localization of a synaptic-vesicle antigen in a cholinergic neuron under conditions of stimulation and rest. *Cell Tissue Res.* 223, 117–126. doi: 10.1007/BF00221503
- Kennedy, M. B. (2016). Synaptic signaling in learning and memory. *Cold Spring Harb. Perspect. Biol.* 8:a016824. doi: 10.1101/cshperspect.a016824
- Kennedy, M. B. (2018). The protein biochemistry of the postsynaptic density in glutamatergic synapses mediates learning in neural networks. *Biochemistry* 57, 4005–4009. doi: 10.1021/acs.biochem.8b00496

- Lansman, J. B. (1990). Blockade of current through single calcium channels by trivalent lanthanide cations. Effect of ionic radius on the rates of ion entry and exit. *J. Gen. Physiol.* 95, 679–696. doi: 10.1085/jgp.95.4.679
- Lerner, I., Trus, M., Cohen, R., Yizhar, O., Nussinovitch, I., and Atlas, D. (2006). Ion interaction at the pore of Lc-type Ca²⁺ channel is sufficient to mediate depolarization-induced exocytosis. *J. Neurochem.* 97, 116–127. doi: 10.1111/j.1471-4159.2006.03709.x
- Lomo, T. (2003). The discovery of long-term potentiation. *Philos. Trans. R. Soc. Lond. B Biol. Sci.* 358, 617–620. doi: 10.1098/rstb.2002.1226
- Lomo, T. (2018). Discovering long-term potentiation (LTP)-recollections and reflections on what came after. *Acta Physiol.* 222:e12921. doi: 10.1111/apha.12921
- Lu, Z., McLaren, R. S., Winters, C. A., and Ralston, E. (1998). Ribosome association contributes to restricting mRNAs to the cell body of hippocampal neurons. *Mol. Cell Neurosci.* 12, 363–375. doi: 10.1006/mcne.1998.0723
- Luscher, C., Nicoll, R. A., Malenka, R. C., and Muller, D. (2000). Synaptic plasticity and dynamic modulation of the postsynaptic membrane. *Nat. Neurosci.* 3, 545–550. doi: 10.1038/75714
- MacGillavry, H. D., Song, Y., Raghavachari, S., and Blanpied, T. A. (2013). Nanoscale scaffolding domains within the postsynaptic density concentrate synaptic AMPA receptors. *Neuron* 78, 615–622. doi: 10.1016/j.neuron.2013.03.009
- Markus, E. J., and Petit, T. L. (1989). Synaptic structural plasticity: role of synaptic shape. *Synapse* 3, 1–11. doi: 10.1002/syn.890030102
- Markus, E. J., Petit, T. L., LeBoutillier, J. C., and Brooks, W. J. (1994). Morphological characteristics of the synapse and their relationship to synaptic type: an electron microscopic examination of the neocortex and hippocampus of the rat. *Synapse* 17, 6548–6558. doi: 10.1002/syn.890170108
- Martin, K. C., and Kosik, K. S. (2002). Synaptic tagging—who's it? *Nat. Rev. Neurosci.* 3, 813–820. doi: 10.1038/nrn942
- Mayer, M. L., Vyklicky, L. Jr., and Westbrook, G. L. (1989). Modulation of excitatory amino acid receptors by group IIB metal cations in cultured mouse hippocampal neurones. *J. Physiol.* 415, 329–350. doi: 10.1113/jphysiol.1989.sp017724
- Medvedev, N. I., Popov, V. I., Dallarac, G., Davies, H. A., Laroche, S., Kraev, I. V., et al. (2010). Alterations in synaptic curvature in the dentate gyrus following induction of long-term potentiation, long-term depression, and treatment with the N-methyl-D-aspartate receptor antagonist CPP. *Neuroscience* 171, 390–397. doi: 10.1016/j.neuroscience.2010.09.014
- Meir, A., Ginsburg, S., Butkevich, A., Kachalsky, S. G., Kaiserman, I., Ahdut, R., et al. (1998). Ion channels in presynaptic nerve terminals and control of transmitter release. *Physiol. Rev.* 79, 1019–1088. doi: 10.1152/physrev.1999.79.3.1019
- Miledi, R. (1971). Lanthanum ions abolish the “calcium response” of nerve terminals. *Nature* 229, 410–411. doi: 10.1038/229410a0
- Milosevic, I., Giovedi, S., Lou, X., Raimondi, A., Collesi, C., Shen, H., et al. (2011). Recruitment of endophilin to clathrin-coated pit necks is required for efficient vesicle uncoating after fission. *Neuron* 72, 587–601. doi: 10.1016/j.neuron.2011.08.029
- Miyano, R., Miki, T., and Sakaba, T. (2019). Ca-dependence of synaptic vesicle exocytosis and endocytosis at the hippocampal mossy fibre terminal. *J. Physiol.* 597, 4373–4386. doi: 10.1113/jp278040
- Morton, A., Marland, J. R., and Cousin, M. A. (2015). Synaptic vesicle exocytosis and increased cytosolic calcium are both necessary but not sufficient for activity-dependent bulk endocytosis. *J. Neurochem.* 134, 405–415. doi: 10.1111/jnc.13132
- Neale, E. A., Bowers, L. M., Jia, M., Bateman, K. E., and Williamson, L. C. (1999). Botulinum neurotoxin A blocks synaptic vesicle exocytosis but not endocytosis at the nerve terminal. *J. Cell Biol.* 147, 1249–1260. doi: 10.1083/jcb.147.6.1249
- Neuhoff, H., Roeper, J., and Schweizer, M. (1999). Activity-dependent formation of perforated synapses in cultured hippocampal neurons. *Eur. J. Neurosci.* 11, 4241–4250. doi: 10.1046/j.1460-9568.1999.00856.x
- Obashi, K., Taraska, J. W., and Okabe, S. (2021). The role of molecular diffusion within dendritic spines in synaptic function. *J. Gen. Physiol.* 153:e202012814. doi: 10.1085/jgp.202012814
- Petit, T. L., LeBoutillier, J. C., Markus, E. J., and Milgram, N. W. (1989). Synaptic structural plasticity following repetitive activation in the rat hippocampus. *Exp. Neurol.* 105, 72–79. doi: 10.1016/0014-4886(89)90173-8
- Petralia, R. S., Wang, Y. X., Mattson, M. P., and Yao, P. J. (2015). Structure, distribution, and function of neuronal/synaptic spinules and related invaginating projections. *Neuromol. Med.* 17, 211–240. doi: 10.1007/s12017-015-8358-6
- Petralia, R. S., Wang, Y. X., Mattson, M. P., and Yao, P. J. (2016). The diversity of spine synapses in animals. *Neuromol. Med.* 18, 497–539. doi: 10.1007/s12017-016-8405-y
- Petralia, R. S., Wang, Y. X., Mattson, M. P., and Yao, P. J. (2017). Invaginating presynaptic terminals in neuromuscular junctions, photoreceptor terminals, and other synapses of animals. *Neuromol. Med.* 19, 193–240. doi: 10.1007/s12017-017-8445-y
- Petralia, R. S., Wang, Y. X., Mattson, M. P., and Yao, P. J. (2018). Invaginating structures in mammalian synapses. *Front. Synaptic Neurosci.* 10:4. doi: 10.3389/fnsyn.2018.00004
- Petralia, R. S., Yao, P. J., Kapogiannis, D., and Wang, Y. X. (2021). Invaginating structures in synapses—perspective. *Front. Synaptic Neurosci.* 13:685052. doi: 10.3389/fnsyn.2021.685052
- Popov, V. I., Davies, H. A., Rogachevsky, V. V., Patrushev, I. V., Errington, M. L., Gabbott, P. L., et al. (2004). Remodelling of synaptic morphology but unchanged synaptic density during late phase long-term potentiation (LTP): a serial section electron micrograph study in the dentate gyrus in the anaesthetised rat. *Neuroscience* 128, 251–262. doi: 10.1016/j.neuroscience.2004.06.029
- Powis, D. A., and Clark, C. L. (1996). A difference in the cellular mechanisms of secretion of adrenaline and noradrenaline revealed with lanthanum in bovine chromaffin cells. *Neurosci. Lett.* 203, 131–134. doi: 10.1016/0304-3940(95)12289-3
- Powis, D. A., Clark, C. L., and O'Brien, K. J. (1994). Lanthanum can be transported by the sodium-calcium exchange pathway and directly triggers catecholamine release from bovine chromaffin cells. *Cell Calcium* 16, 377–390. doi: 10.1016/0143-4160(94)90031-0
- Ramirez, D. M., and Kavalali, E. T. (2011). Differential regulation of spontaneous and evoked neurotransmitter release at central synapses. *Curr. Opin. Neurobiol.* 21, 275–282. doi: 10.1016/j.conb.2011.01.007
- Ramsey, A. M., Tang, A. H., LeGates, T. A., Gou, X. Z., Carbone, B. E., Thompson, S. M., et al. (2021). Subsynaptic positioning of AMPARs by LRRTM2 controls synaptic strength. *Sci. Adv.* 7:eabf3126. doi: 10.1126/sciadv.abf3126
- Ransom, B. R., Neale, E., Henkart, M., Bullock, P. N., and Nelson, P. G. (1977). Mouse spinal cord in cell culture. I. Morphology and intrinsic neuronal electrophysiological properties. *J. Neurophysiol.* 40, 1132–1150. doi: 10.1152/jn.1977.40.5.1132
- Redondo, R. L., and Morris, R. G. (2011). Making memories last: the synaptic tagging and capture hypothesis. *Nat. Rev. Neurosci.* 12, 17–30. doi: 10.1038/nrn2963
- Reichling, D. B., and MacDermott, A. B. (1991). Lanthanum actions on excitatory amino acid-gated currents and voltage-gated calcium currents in rat dorsal horn neurons. *J. Physiol.* 441, 199–218. doi: 10.1113/jphysiol.1991.sp018746
- Robitaille, R., and Tremblay, J. P. (1987). Incorporation of vesicular antigens into the presynaptic membrane during exocytosis at the frog neuromuscular junction: a light and electron microscopy immunochemical study. *Neuroscience* 21, 619–629. doi: 10.1016/0306-4522(87)90147-3
- Schwartzkroin, P. A., and Wester, K. (1975). Long-lasting facilitation of a synaptic potential following tetanization in the *in vitro* hippocampal slice. *Brain Res.* 89, 107–119. doi: 10.1016/0006-8993(75)90138-9
- Scott, D. B., Blanpied, T. A., Swanson, G. T., Zhang, C., and Ehlers, M. D. (2001). An NMDA receptor ER retention signal regulated by phosphorylation and alternative splicing. *J. Neurosci.* 21, 3063–3072. doi: 10.1523/JNEUROSCI.21-09-03063.2001
- Segal, J. R., Ceccarelli, B., Fesce, R., and Hurlbut, W. P. (1985). Miniature endplate potential frequency and amplitude determined by an extension of Campbell's theorem. *Biophys. J.* 47, 183–202. doi: 10.1016/s0006-3495(85)83891-1
- Shires, K. L., Da Silva, B. M., Hawthorne, J. P., Morris, R. G., and Martin, S. J. (2012). Synaptic tagging and capture in the living rat. *Nat. Commun.* 3:1246. doi: 10.1038/ncomms2250

- Skrede, K. K., and Westgaard, R. H. (1971). The transverse hippocampal slice: a well-defined cortical structure maintained in vitro. *Brain Res.* 35, 589–593. doi: 10.1016/0006-8993(71)90508-7
- Sorra, K. E., Fiala, J. C., and Harris, K. M. (1998). Critical assessment of the involvement of perforations, spinules, and spine branching in hippocampal synapse formation. *J. Comp. Neurol.* 398, 225–240.
- Spacek, J., and Harris, K. M. (1997). Three-dimensional organization of smooth endoplasmic reticulum in hippocampal CA1 dendrites and dendritic spines of the immature and mature rat. *J. Neurosci.* 17, 190–203. doi: 10.1523/JNEUROSCI.17-01-00190.1997
- Spacek, J., and Harris, K. M. (2004). Trans-endocytosis *via* spinules in adult rat hippocampus. *J. Neurosci.* 24, 4233–4241. doi: 10.1523/JNEUROSCI.0287-04.2004
- Stewart, M. G., Davies, H. A., Sandi, C., Kraev, I. V., Rogachevsky, V. V., Peddie, C. J., et al. (2005a). Stress suppresses and learning induces plasticity in ca3 of rat hippocampus: a three-dimensional ultrastructural study of thorny excrescences and their postsynaptic densities. *Neuroscience* 131, 43–54. doi: 10.1016/j.neuroscience.2004.10.031
- Stewart, M. G., Medvedev, N. I., Popov, V. I., Schoepfer, R., Davies, H. A., Murphy, K., et al. (2005b). Chemically induced long-term potentiation increases the number of perforated and complex postsynaptic densities but does not alter dendritic spine volume in CA1 of adult mouse hippocampal slices. *Eur. J. Neurosci.* 21, 3368–3378. doi: 10.1111/j.1460-9568.2005.04174.x
- Stoppini, L., Buchs, P. A., and Muller, D. (1991). A simple method for organotypic cultures of nervous tissue. *J. Neurosci. Methods* 37, 173–182. doi: 10.1016/0165-0270(91)90128-m
- Sun, Y., Smirnov, M., Kamasawa, N., and Yasuda, R. (2021). Rapid ultrastructural changes in the psd and surrounding membrane after induction of structural LTP in single dendritic spines. *J. Neurosci.* 41, 7003–7014. doi: 10.1523/JNEUROSCI.1964-20.2021
- Tao-Cheng, J. H. (2019). Stimulation induces gradual increases in the thickness and curvature of postsynaptic density of hippocampal CA1 neurons in slice cultures. *Mol. Brain* 12:44. doi: 10.1186/s13041-019-0468-x
- Tao-Cheng, J. H., Dosemeci, A., Gallant, P. E., Miller, S., Galbraith, J. A., Winters, C. A., et al. (2009). Rapid turnover of spinules at synaptic terminals. *Neuroscience* 160, 42–50. doi: 10.1016/j.neuroscience.2009.02.031
- Tao-Cheng, J. H., Gallant, P. E., Brightman, M. W., Dosemeci, A., and Reese, T. S. (2007). Structural changes at synapses after delayed perfusion fixation in different regions of the mouse brain. *J. Comp. Neurol.* 501, 731–740. doi: 10.1002/cne.21276
- Tarrant, S. B., and Routtenberg, A. (1977). The synaptic spinule in the dendritic spine: electron microscopic study of the hippocampal dentate gyrus. *Tissue Cell* 9, 461–473. doi: 10.1016/0040-8166(77)90006-4
- Teng, H., and Wilkinson, R. S. (2003). “Delayed” endocytosis is regulated by extracellular Ca²⁺ in snake motor boutons. *J. Physiol.* 551(Pt 1), 103–114. doi: 10.1113/jphysiol.2003.041152
- Toni, N., Buchs, P. A., Nikonenko, I., Bron, C. R., and Muller, D. (1999). LTP promotes formation of multiple spine synapses between a single axon terminal and a dendrite. *Nature* 402, 421–425. doi: 10.1038/46574
- Toni, N., Buchs, P. A., Nikonenko, I., Povolaitte, P., Parisi, L., and Muller, D. (2001). Remodeling of synaptic membranes after induction of long-term potentiation. *J. Neurosci.* 21, 6245–6251. doi: 10.1523/JNEUROSCI.21-16-06245.2001
- Torri-Tarelli, F., Haimann, C., and Ceccarelli, B. (1987). Coated vesicles and pits during enhanced quantal release of acetylcholine at the neuromuscular junction. *J. Neurocytol.* 16, 205–214. doi: 10.1007/BF01795304
- Torri-Tarelli, F., Villa, A., Valtorta, F., De Camilli, P., Greengard, P., and Ceccarelli, B. (1990). Redistribution of synaptophysin and synapsin I during alpha-latrotoxin-induced release of neurotransmitter at the neuromuscular junction. *J. Cell Biol.* 110, 449–459. doi: 10.1083/jcb.110.2.449
- Trotter, J. H., Hao, J., Maxeiner, S., Tsetsenis, T., Liu, Z., Zhuang, X., et al. (2019). Synaptic neurexin-1 assembles into dynamically regulated active zone nanoclusters. *J. Cell Biol.* 218, 2677–2698. doi: 10.1083/jcb.201812076
- Valtorta, F., Jahn, R., Fesce, R., Greengard, P., and Ceccarelli, B. (1988). Synaptophysin (p38) at the frog neuromuscular junction: its incorporation into the axolemma and recycling after intense quantal secretion. *J. Cell Biol.* 107(6 Pt 2), 2717–2727. doi: 10.1083/jcb.107.6.2717
- Vogel, S. S., Smith, R. M., Baibakov, B., Ikebuchi, Y., and Lambert, N. A. (1999). Calcium influx is required for endocytotic membrane retrieval. *Proc. Natl. Acad. Sci. U.S.A.* 96, 5019–5024. doi: 10.1073/pnas.96.9.5019
- von Wedel, R. J., Carlson, S. S., and Kelly, R. B. (1981). Transfer of synaptic vesicle antigens to the presynaptic plasma membrane during exocytosis. *Proc. Natl. Acad. Sci. U.S.A.* 78, 1014–1018. doi: 10.1073/pnas.78.2.1014
- Wasser, C. R., and Kavalali, E. T. (2009). Leaky synapses: regulation of spontaneous neurotransmission in central synapses. *Neuroscience* 158, 177–188. doi: 10.1016/j.neuroscience.2008.03.028
- Watson, D. J., Ostroff, L., Cao, G., Parker, P. H., Smith, H., and Harris, K. M. (2016). LTP enhances synaptogenesis in the developing hippocampus. *Hippocampus* 26, 560–576. doi: 10.1002/hipo.22536
- Wegner, W., Steffens, H., Gregor, C., Wolf, F., and Willig, K. I. (2022). Environmental enrichment enhances patterning and remodeling of synaptic nanoarchitecture as revealed by STED nanoscopy. *Elife* 11:e73603. doi: 10.7554/eLife.73603
- Wu, Y., O’Toole, E. T., Girard, M., Ritter, B., Messa, M., Liu, X., et al. (2014). A dynamin 1-, dynamin 3- and clathrin-independent pathway of synaptic vesicle recycling mediated by bulk endocytosis. *Elife* 3:e01621. doi: 10.7554/eLife.01621
- Yao, C. K., Lin, Y. Q., Ly, C. V., Ohyama, T., Haueter, C. M., Moiseenkova-Bell, V. Y., et al. (2009). A synaptic vesicle-associated Ca²⁺ channel promotes endocytosis and couples exocytosis to endocytosis. *Cell* 138, 947–960. doi: 10.1016/j.cell.2009.06.033
- Zefirov, A. L., Abdrakhmanov, M. M., Mukhamedyarov, M. A., and Grigoryev, P. N. (2006). The role of extracellular calcium in exo- and endocytosis of synaptic vesicles at the frog motor nerve terminals. *Neuroscience* 143, 905–910. doi: 10.1016/j.neuroscience.2006.08.025
- Zeng, M., Shang, Y., Araki, Y., Guo, T., Hugarir, R. L., and Zhang, M. (2016). Phase transition in postsynaptic densities underlies formation of synaptic complexes and synaptic plasticity. *Cell* 166, 1163.e12–1175.e12. doi: 10.1016/j.cell.2016.07.008
- Zhao, S., Studer, D., Graber, W., Nestel, S., and Frotscher, M. (2012a). Fine structure of hippocampal mossy fiber synapses following rapid high-pressure freezing. *Epilepsia* 53(Suppl. 1), 4–8. doi: 10.1111/j.1528-1167.2012.03469.x
- Zhao, S., Studer, D., Chai, X., Graber, W., Brose, N., Nestel, S., et al. (2012b). Structural plasticity of hippocampal mossy fiber synapses as revealed by high-pressure freezing. *J. Comp. Neurol.* 520, 2340–2351. doi: 10.1002/cne.23040
- Zhao, S., Studer, D., Chai, X., Graber, W., Brose, N., Nestel, S., et al. (2012c). Structural plasticity of spines at giant mossy fiber synapses. *Front. Neural Circuits* 6:103–134. doi: 10.3389/fncir.2012.00103

Conflict of Interest: The author declares that the research was conducted in the absence of any commercial or financial relationships that could be construed as a potential conflict of interest.

Publisher’s Note: All claims expressed in this article are solely those of the authors and do not necessarily represent those of their affiliated organizations, or those of the publisher, the editors and the reviewers. Any product that may be evaluated in this article, or claim that may be made by its manufacturer, is not guaranteed or endorsed by the publisher.

Copyright © 2022 Heuser. This is an open-access article distributed under the terms of the Creative Commons Attribution License (CC BY). The use, distribution or reproduction in other forums is permitted, provided the original author(s) and the copyright owner(s) are credited and that the original publication in this journal is cited, in accordance with accepted academic practice. No use, distribution or reproduction is permitted which does not comply with these terms.