




Search for lepton flavour violating muon decay mediated by a new light particle in the MEG experiment

The MEG Collaboration

A. M. Baldini^{1a}, F. Berg^{2,3}, M. Biasotti^{4a,4b}, G. Boca^{5a,5b}, P. W. Cattaneo^{5a}, G. Cavoto^{6a,6b}, F. Cei^{1a,1b}, M. Chiappini^{1a,1b}, G. Chiarello^{6a,6b}, C. Chiri^{7a,7b}, A. Corvaglia^{7a,7b}, A. de Bari^{5a,5b}, M. De Gerone^{4a}, M. Francesconi^{1a}, L. Galli^{1a}, F. Gatti^{4a,4b}, F. Grancagnolo^{7a}, M. Grassi^{1a}, D. N. Grigoriev^{8,9,10}, M. Hildebrandt², Z. Hodge^{2,3}, K. Ieki¹¹, F. Ignatov^{8,10}, R. Iwai¹¹, T. Iwamoto¹¹, S. Kobayashi¹¹, P.-R. Kettle², W. Kyle¹², N. Khomutov¹³, A. Kolesnikov¹³, N. Kravchuk¹³, N. Kuchinskiy¹³, T. Libeiro¹², G. M. A. Lim¹², V. Malyshev¹³, N. Matsuzawa¹¹, M. Meucci^{6a,6b}, S. Mihara¹⁴, W. Molzon¹², Toshinori Mori¹¹, A. Mtchedilishvili², M. Nakao^{11,a} , H. Natori¹¹, D. Nicolò^{1a,1b}, H. Nishiguchi¹⁴, M. Nishimura¹¹, S. Ogawa¹¹, R. Onda¹¹, W. Ootani¹¹, A. Oya¹¹, D. Palo¹², M. Panareo^{7a,7b}, A. Papa^{1a,1b,2}, V. Pettinacci^{6a}, G. Pizzigoni^{4a,4b}, A. Popov^{8,10}, F. Renga^{6a}, S. Ritt², A. Rozhdestvensky¹³, M. Rossella^{5a}, R. Sawada¹¹, P. Schwendimann², G. Signorelli^{1a}, A. Stoykov², G. F. Tassielli^{7a}, K. Toyoda¹¹, Y. Uchiyama¹¹, M. Usami¹¹, C. Voena^{6a}, K. Yanai¹¹, Yu. V. Yudin^{8,10}

¹ Dipartimento di Fisica^b, INFN Sezione di Pisa^a dell'Università, Largo B. Pontecorvo 3, 56127 Pisa, Italy

² Paul Scherrer Institut PSI, 5232 Villigen, Switzerland

³ Swiss Federal Institute of Technology ETH, 8093 Zurich, Switzerland

⁴ Dipartimento di Fisica^b, INFN Sezione di Genova^a dell'Università, Via Dodecaneso 33, 16146 Genoa, Italy

⁵ Dipartimento di Fisica^b, INFN Sezione di Pavia^a dell'Università, Via Bassi 6, 27100 Pavia, Italy

⁶ Dipartimento di Fisica^b, INFN Sezione di Roma^a dell'Università "Sapienza", Piazzale A. Moro, 00185 Rome, Italy

⁷ Dipartimento di Matematica e Fisica^b, INFN Sezione di Lecce^a dell'Università del Salento, Via per Arnesano, 73100 Lecce, Italy

⁸ Budker Institute of Nuclear Physics of Siberian Branch of Russian Academy of Sciences, 630090 Novosibirsk, Russia

⁹ Novosibirsk State Technical University, 630092 Novosibirsk, Russia

¹⁰ Novosibirsk State University, 630090 Novosibirsk, Russia

¹¹ ICEPP, The University of Tokyo, 7-3-1 Hongo, Bunkyo-ku, Tokyo 113-0033, Japan

¹² University of California, Irvine, CA 92697, USA

¹³ Joint Institute for Nuclear Research, 141980 Dubna, Russia

¹⁴ KEK, High Energy Accelerator Research Organization, 1-1 Oho, Tsukuba, Ibaraki 305-0801, Japan

Received: 5 May 2020 / Accepted: 15 August 2020

© The Author(s) 2020

Abstract We present the first direct search for lepton flavour violating muon decay mediated by a new light particle X , $\mu^+ \rightarrow e^+X$, $X \rightarrow \gamma\gamma$. This search uses a dataset resulting from 7.5×10^{14} stopped muons collected by the MEG experiment at the Paul Scherrer Institut in the period 2009–2013. No significant excess is found in the mass region 20–45 MeV/ c^2 for lifetimes below 40 ps, and we set the most stringent branching ratio upper limits in the mass region of 20–40 MeV/ c^2 , down to $\mathcal{O}(10^{-11})$ at 90% confidence level.

Contents

1 Introduction	2
2 Detector	2
3 Search strategy	4
4 Simulation	5
5 Event reconstruction	6
6 Dataset and event selection	11
7 Single event sensitivity	12
8 Statistical treatment of background and signal	14
9 Results and discussion	15
10 Conclusions	17
Appendix A: Detailed results for different lifetimes	17
References	20

^a e-mail: mitsutaka.r.nakao@gmail.com

1 Introduction

The search for charged lepton flavour violating (CLFV) processes is one of the key tools to probe for physics beyond the Standard Model (SM) of elementary particles and interactions. The observation of neutrino oscillations [1–3] showed that lepton flavour is not conserved in nature. As a consequence, charged lepton flavour is violated, even though the rate is unobservably small ($< 10^{-50}$) in an extension of the SM accounting for measured neutrino mass differences and mixing angles [4,5]. In the context of new physics, in the framework of grand unified theories for example, CLFV processes can occur at an experimentally observable rate [6]. Therefore, such processes are free from SM physics backgrounds and a positive signal would constitute unambiguous evidence for physics beyond the SM. This motivates the effort to search for evidence of new physics through CLFV processes [7,8].

The MEG experiment at the Paul Scherrer Institut (PSI) in Switzerland searched for one such CLFV process, $\mu^+ \rightarrow e^+\gamma$ decay, with the highest sensitivity in the world. No evidence of the decay was found yet, leading to an upper limit on the branching ratio $\mathcal{B}(\mu^+ \rightarrow e^+\gamma) < 4.2 \times 10^{-13}$ at 90% confidence level (C.L.) [9]. Models that allow $\mu^+ \rightarrow e^+\gamma$ decay at an observable rate usually assume that CLFV couplings are introduced through an exchange of new particles much heavier than the muon. Negative results by CLFV searches leave open another possibility: new physics exists at a lighter scale but with very weak coupling to SM particles.

If a new particle X (with mass m_X and lifetime τ_X) lighter than the muon exists, the CLFV two-body decay $\mu \rightarrow eX$ may be a good probe for such new physics. The experimental signature depends on how the new particle X decays. In this paper, we report a search for $\mu^+ \rightarrow e^+X, X \rightarrow \gamma\gamma$ (MEx2G) decay using the full dataset collected in the MEG experiment. Here, we assume that X is an on-shell scalar or pseudo-scalar particle. Axion-like particles [10–13], Majoron [14,15], familon [16–19], flavon [20,21], flaxion [22,23], hierarchion [24], and strongly interacting massive particles [25,26] are candidates for X.

A dedicated search for the MEx2G decay has never been done, although some constraints on the X particle parameter space can be deduced by experimental results from both related muon decay modes and non-muon experiments; these are discussed below.

Current upper limits on the inclusive decay $\mu^+ \rightarrow e^+X$ are given at $\mathcal{O}(10^{-5})$ for m_X in the range 13–80 MeV/c² [27].¹ However, the current limits do not impose any constraints on the MEx2G decay in the target region of this search. They are complementary, relevant for cases where X is either stable or decays invisibly. For X resulting

¹ In these searches, only e^+ is looked at.

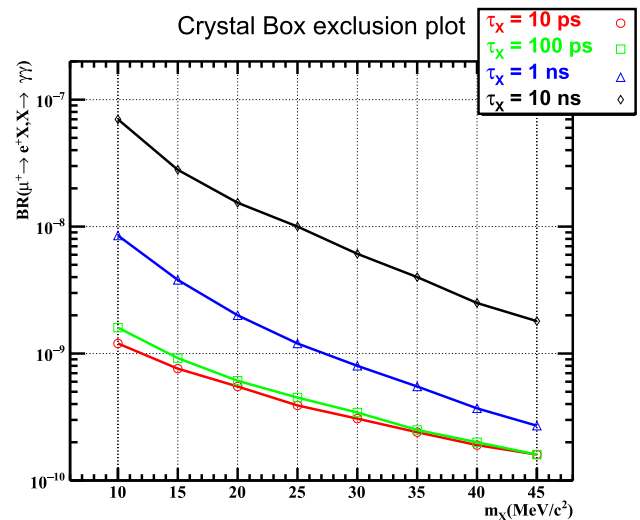


Fig. 1 Upper limits on MEx2G decay estimated by converting the upper limits on $\mu^+ \rightarrow e^+\gamma\gamma$ from the Crystal Box experiment as a function of m_X . Lines with different markers and colours correspond to different τ_X

from muon decays, the only kinematically allowed visible decay channels are $X \rightarrow e^+e^-$ and $X \rightarrow \gamma\gamma$. The former can occur at tree level while the latter can occur via a fermion loop. The current upper limit on $\mu^+ \rightarrow e^+X, X \rightarrow e^+e^-$ at a level of $\mathcal{O}(10^{-12})$ [28] give stringent constraints on the MEx2G decay if we assume that X is more likely to decay into an e^+e^- pair. However, there is a possibility for X to be electrophobic, as pointed out in [29,30], and searches for both decay modes can hint at the model behind these decay modes.

The current upper limit on the decay $\mu^+ \rightarrow e^+\gamma\gamma$, $\mathcal{B}(\mu^+ \rightarrow e^+\gamma\gamma) < 7.2 \times 10^{-11}$ (90% C.L.) from the Crystal Box experiment [31] can be converted into an equivalent MEx2G upper limit by taking into account the difference in detector efficiencies [32]; the converted limits are shown in Fig. 1.

Axion-like particle searches from collider and beam dump experiments and from supernova observations also constrain the branching ratio $X \rightarrow \gamma\gamma$ if the axion-like particles are generated from coupling to photons [33]. Figure 2 summarises the parameter regions excluded by these experiments. A region with decay length $c\tau_X\gamma < 1$ cm and $m_X > 20$ MeV/c² still has room for the MEx2G decay.

Based on limits discussed above, we define the target parameter space of this search in the τ_X – m_X plane as shown in Fig. 3.

2 Detector

The MEG detector is briefly presented in the following, emphasising aspects relevant to this search; a detailed description is available in [37].

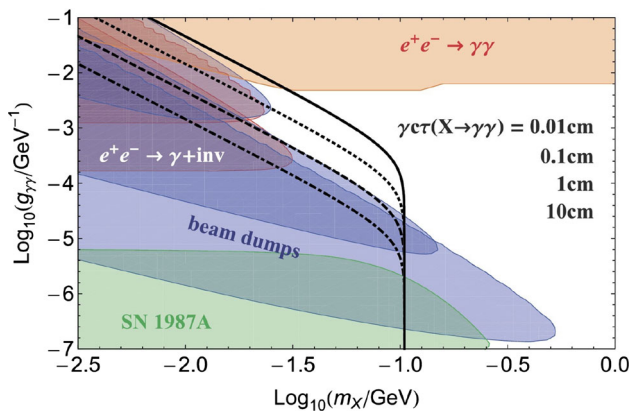


Fig. 2 Excluded parameter regions for a scalar X with mass m_X and coupling $g_{\gamma\gamma}$ to 2γ s from collider, beam dumps, and supernova [34–36] (from [33]). In black we show contours of the boosted decay length $\gamma c\tau_X$ of $X \rightarrow \gamma\gamma$, assuming X to be produced from an at-rest muon decay $\mu^+ \rightarrow e^+X$. The solid black line corresponds to $\gamma c\tau_X = 0.01$ cm, the dotted one to 0.1 cm, the dashed one to 1 cm and the dot-dashed line to 10 cm

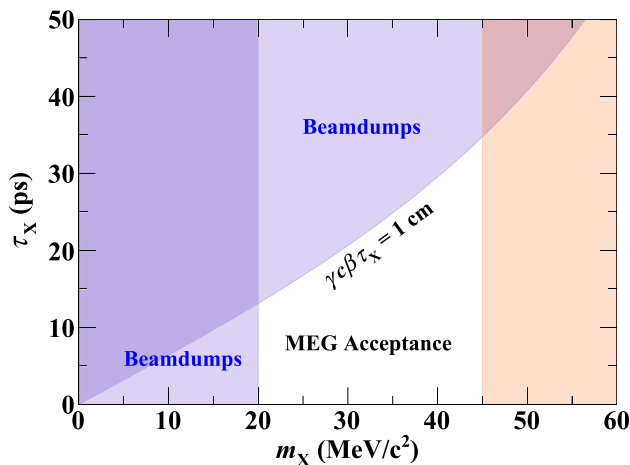


Fig. 3 Allowed X particle parameter space (white). The blue region has already been excluded [35] and the red shaded region on the right ($m_X \gtrsim 45 \text{ MeV}/c^2$) is inaccessible to MEG

In this paper we adopt a Cartesian coordinate system (x, y, z) shown in Fig. 4 with the origin at the centre of the magnet. When necessary, we also refer to the cylindrical coordinate system (r, ϕ, z) as well as the polar angle θ .

Multiple intense μ^+ beams are available at the πE5 channel in the 2.2-mA PSI proton accelerator complex. We use a beam of *surface muons*, produced by π^+ decaying near the surface of a production target. The beam intensity is tuned to a μ^+ stopping rate of 3×10^7 , limited by the rate capabilities of the tracking system and the rate of accidental backgrounds in the $\mu^+ \rightarrow e^+\gamma$ search. The muons at the production target are fully polarised ($P_{\mu^+} = -1$), and they reach a stopping target with a residual polarisation $P_{\mu^+} = -0.86 \pm 0.02$ (stat) $^{+0.05}_{-0.06}$ (syst) [38].

The positive muons are stopped and decay in a thin target placed at the centre of the spectrometer at a slant angle of $\approx 20^\circ$ from the μ^+ beam direction. The target is composed of a 205 μm thick layer of polyethylene and polyester (density 0.895 g/cm^3).

Positrons from the muon decays are detected with a magnetic spectrometer, called the COBRA (standing for CONSTANT BENDING RADIUS) spectrometer, consisting of a thin-walled superconducting magnet, a drift chamber array (DCH), and two scintillating timing counter (TC) arrays.

The magnet [39] is made of a superconducting coil with three different radii. It generates a gradient magnetic field of 1.27 T at the centre and 0.49 T at each end. The diameter of an emitted e^+ trajectory depends on the absolute momentum, independent of the polar angle due to the gradient field. This allows us to select e^+ s within a specific momentum range by placing the TC detectors in a specific radial range; e^+ s whose momenta are larger than $\sim 45 \text{ MeV}/c$ fall into the acceptance of the TC. Furthermore, the gradient field prevents e^+ s emitted nearly perpendicular to the μ^+ beam direction from looping many times in the spectrometer. This results in a suppression of hit rates in the DCH. The thickness of the central part of the magnet is 0.2 radiation length to maximise transparency to γ ; 85% of the signal γ s penetrate the magnet without interaction and reach the photon detector.

Positrons are tracked in the DCH [40]. It is composed of 16 independent modules. Each module has a trapezoidal shape with base lengths of 104 cm (at smaller radius, close to the stopping target) and 40 cm (at larger radius). These modules are installed in the bottom hemisphere in the magnet at 10.5° intervals. The DCH covers the azimuthal region between 191.25° and 348.75° and the radial region between 19.3 cm and 27.9 cm. It is composed of low mass materials and helium-based gas ($\text{He} : \text{C}_2\text{H}_6 = 1 : 1$) to suppress Coulomb multiple scattering; 2.0×10^{-3} radiation length path is achieved for the e^+ from $\mu^+ \rightarrow e^+\gamma$ decay at energy of $E_{e^+} = 52.83 \text{ MeV}$ ($= m_\mu c^2/2$, where m_μ is the mass of muon).

The TC [41,42] is designed to measure precisely the e^+ hit time. Fifteen scintillator bars are placed at each end of the COBRA. They are made of $4 \times 4 \times 80 \text{ cm}^3$ plastic scintillators with fine-mesh PMTs attached to both ends of the bars.

The efficiency of the spectrometer significantly depends on E_{e^+} as shown in Fig. 5. The e^+ energy from the MEX2G decay is lower than that from $\mu^+ \rightarrow e^+\gamma$ depending on m_X , and the efficiency is correspondingly lower. The large m_X search range is limited by this effect as shown in Fig. 3.

The photon detector is a homogeneous liquid-xenon (LXe) detector relying on scintillation light² for energy, position, and timing measurement [43,44]. As shown in Fig. 4, it has

² In the high rate MEG environment, only scintillation light with its fast signal, is detected.

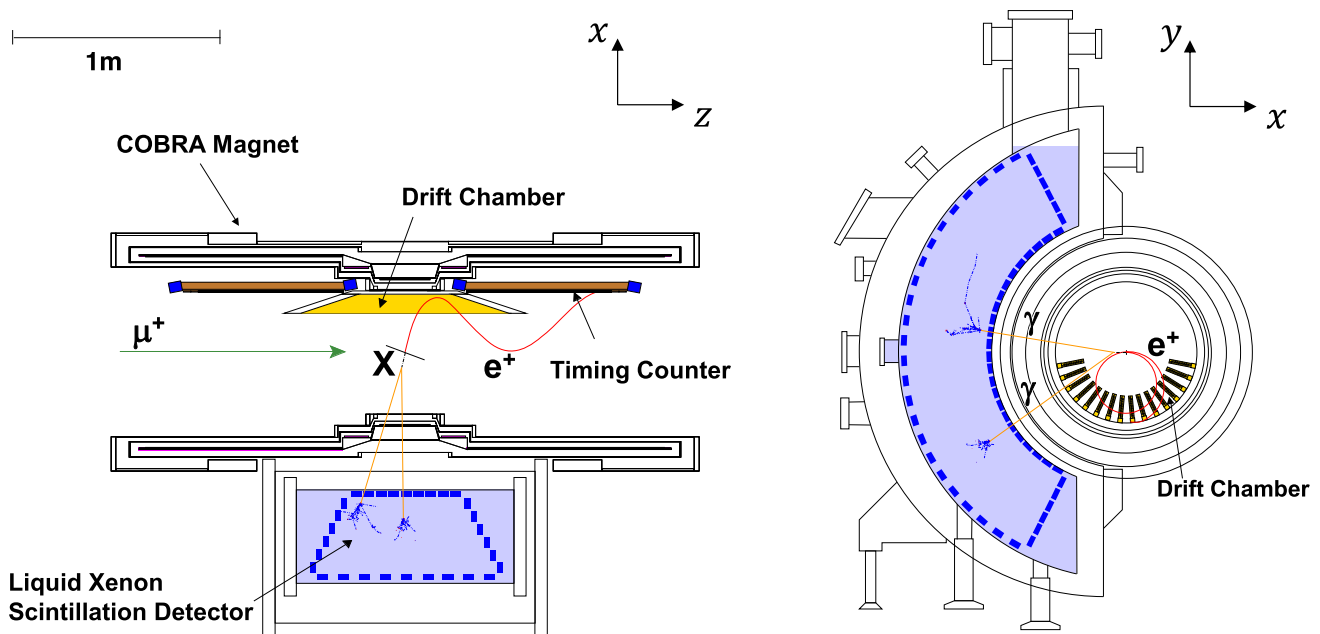


Fig. 4 The figure shows a schematic view of the MEG detector with a simulated MEx2G event emitted from the target. The top view is shown on the left, the view from downstream on the right

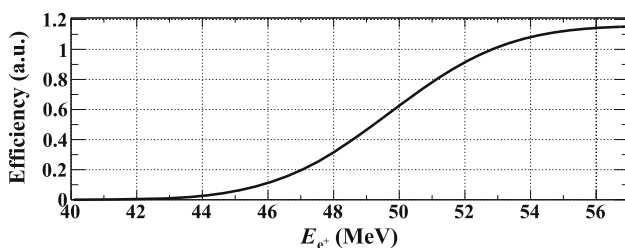


Fig. 5 COBRA spectrometer relative efficiency as a function of E_{e^+} normalised to $\epsilon_{e^+}(52.83 \text{ MeV}) = 1$

a C-shaped structure fitting the outer radius of the magnet. The fiducial volume is $\approx 800 \text{ l}$, covering 11% of the solid angle viewed from the centre of the stopping target in the radial range of $67.85 < r < 105.9 \text{ cm}$, corresponding to ≈ 14 radiation length. It is able to detect a 52.83-MeV γ with high efficiency and to contain the electromagnetic shower induced by it. The scintillation light is detected by 846 2-inch PMTs submerged directly in the liquid xenon. They are placed on all six faces of the detector, with different PMT coverage on different faces. On the inner face, which is the densest part, the PMTs align at intervals of 6.2 cm.

One of the distinctive features of the MEG experiment is that it digitises and records all waveforms from the detectors using the Domino Ring Sampler v4 (DRS4) chip [45]. The sampling speeds are set to 1.6 GSPS for TC and LXe photon detector and 0.8 GSPS for DCH. This lower value for DCH is selected to match the drift velocity and the required precision.

The DAQ event rate was kept below 10 Hz in order to acquire the full waveform data ($\approx 1 \text{ MB/event}$). It was accomplished using a highly efficient online trigger system [46, 47].

Several types of trigger logic were implemented and activated during the physics data-taking each with its own prescaling factor. However, a dedicated trigger for the MEx2G events was neither foreseen nor implemented. Thus, we rely on the $\mu^+ \rightarrow e^+\gamma$ triggered data in this search.

The main $\mu^+ \rightarrow e^+\gamma$ trigger, with a prescaling of 1, used the following observables: γ energy, time difference between e^+ and γ , and relative direction of e^+ and γ . The DC was not used in the trigger due to the slow drift velocity. The condition on the relative direction is designed to select back-to-back events. To calculate the relative direction, the PMT that detects the largest amount of scintillation light is used for the γ , while the hit position at the TC is used for the e^+ . This direction match requirement results in inefficient selection of the MEx2G signal because, unlike the $\mu^+ \rightarrow e^+\gamma$ decay, the MEx2G decay has 2γ s with a finite opening angle, resulting in events often failing to satisfy the direction trigger. The selection inefficiency for MEx2G events is 10–50% depending on m_X as shown in Fig. 6.

Finally, the detector has been calibrated and monitored over all data-taking period with various methods [48, 49], ensuring that the detector performances have been under control over the duration of the experiment.

3 Search strategy

The MEx2G signal results from the sequential decays of $\mu^+ \rightarrow e^+X$ followed by $X \rightarrow \gamma\gamma$. The first part is a two-body decay of a muon at rest, signalled by a mono-energetic

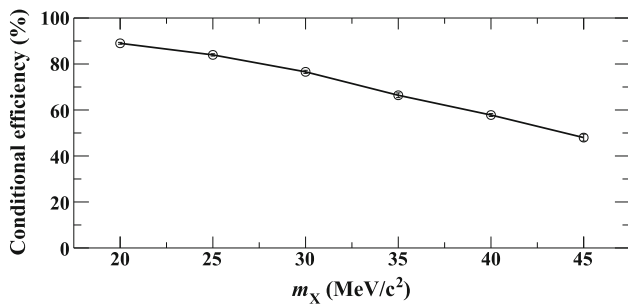


Fig. 6 Trigger direction match efficiency for the MEX2G decay conditional to e^+ and 2γ detection as a function of m_X evaluated with a Monte Carlo simulation (Sect. 4)

e^+ . The energy E_{e^+} is determined by m_X : $E_{e^+}(m_X = 0) = 52.83$ MeV and is a decreasing function of m_X . The sum of energies of the two γ s is also mono-energetic and an increasing function of m_X . The momenta of the two γ s are Lorentz-boosted along the direction of X, which increases the acceptance in the LXe photon detector compared to the three-body decay $\mu^+ \rightarrow e^+\gamma\gamma$. The final-state three particles is expected to have an invariant mass of 105.7 MeV/c²(= m_μ) and the total momentum vector equal to 0.

A physics background that generates time-coincident $e^+\gamma\gamma$ in the final state is $\mu^+ \rightarrow e^+\nu\bar{\nu}\gamma\gamma$. This mode has not yet been measured but exists in the SM. The branching ratio is calculated to be $\sim \mathcal{O}(10^{-14})$ for the MEG detector configuration without any cut on E_{e^+} [50,51]. Therefore, its contribution is certainly negligible in this search where we apply cuts on E_{e^+} .

The dominant background is the accidental pileup of multiple μ^+ s decays. There are three types of accidental background events:

- Type 1** The e^+ and one of the γ s originate from one μ^+ , and the other γ from a different one.
- Type 2** The two γ s share the same origin, and the e^+ is accidental.
- Type 3** All the particles are accidental.

The main source of a time-coincident $e^+\gamma$ pair in type 1 is the radiative muon decay $\mu^+ \rightarrow e^+\nu\bar{\nu}\gamma$ [52]. The sources of time-coincident $\gamma\gamma$ pairs in type 2 are $e^+e^- \rightarrow \gamma\gamma$ (e^+ from μ^+ decay and e^- from material along the e^+ trajectory), $\mu^+ \rightarrow e^+\nu\bar{\nu}\gamma$ with an additional γ , e.g. by a bremsstrahlung from the e^+ ³, or a cosmic-ray induced shower.

Figure 7 shows the decay kinematics and the kinematic variables. The muon decay vertex and the momentum of the e^+ are obtained by reconstructing the e^+ trajectory using the hits in DCH and TC and the intersection of the trajectory with the plane of the muon beam stopping target (Sect. 5.1). The

³ In the case of type 2, the e^+ can have low energy and be undetected.

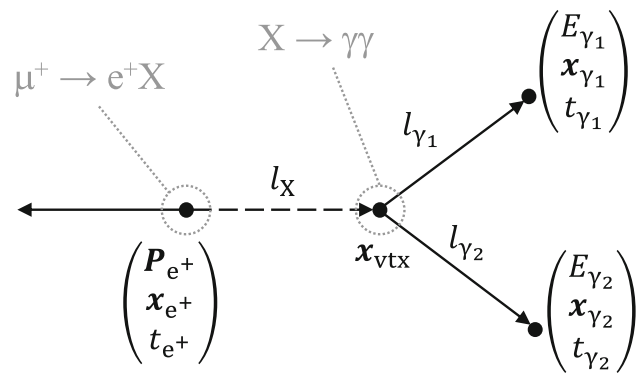


Fig. 7 Decay kinematics and kinematic variables

interaction positions and times of the two γ s within the LXe photon detector and their energies are individually reconstructed using the PMT charge and time information of the LXe photon detector (Sect. 5.2).

Given the muon decay vertex, the two γ s' energies and positions, and m_X , the X decay vertex x_{vtx} can be computed. Therefore, we reconstruct x_{vtx} by scanning the assumed value of m_X (Sect. 5.3.1). If the final-state three particles do not originate at a single muon decay vertex, these variables will be inconsistent with originating from a single point. After reconstructing x_{vtx} , the relative time and angles (momenta) between X and e^+ are tested for consistency with a muon decay (Sects. 5.3.2 and 5.3.3).

The MEX2G decay search analysis is performed within the mass range 20 MeV/c² < m_X < 45 MeV/c² at 1 MeV/c² step. This step is chosen small enough not to miss signals in the gaps. Therefore, adjacent mass bins are not statistically independent. The analysis was performed assuming lifetimes $\tau_X = 5, 20,$ and 40 ps; the value affects only the signal efficiency.

We estimate the accidental background by using the data in which the particles are not time coincident. To reduce the possibility of experimental bias, a blind analysis is adopted; the blind region is defined in the plane of the relative times of the three particles (Sect. 6).

The signal efficiency is evaluated on the basis of a Monte Carlo simulation (Sect. 4). Its tuning and validation are performed using pseudo- 2γ data as described in Sect. 4.1.

4 Simulation

The technical details of the program of Monte Carlo (MC) simulation are presented in [53] and an overview of the physics and detector simulation is available in [37]. In the following we report a brief summary.

The first step of the simulation is the generation of the physics events. That is realised with custom written code for

a large number of relevant physics channels. The MEX2G decay is simulated starting from a muon at rest in the target; the decay products are generated in accordance with the decay kinematics for the given m_X and τ_X .

The muon beam transport, interaction in the target, and propagation of the decay products in the detector are simulated with a MC program based on GEANT3.21 [54] that describes the detector response. Between the detector simulation and the reconstruction program, an intermediate program processes the MC information, adding readout simulation and allowing event mixing to study the detector performance under combinatorial background events. Particularly, the μ^+ beam, randomly distributed in time at a decay rate of $3 \times 10^7 \mu^+ s^{-1}$, is mixed with the MEX2G decay to study the e^+ spectrometer performance. The detectors' operating condition, such as the active layers of DCH and the applied high-voltages, are implemented with the known time dependence.

In order to simulate the accidental activity in the LXe photon detector, data collected with a random-time trigger are used. A MC event and a random-trigger event are overlaid by summing the numbers of photo-electrons detected by each PMT.

4.1 Pseudo two γ data

To study the performance of the 2γ reconstruction, we built pseudo 2γ events using calibration data. The following γ -ray lines are obtained in calibration runs:

- 54.9 MeV and 82.9 MeV from $\pi^- p \rightarrow \pi^0 n \rightarrow \gamma\gamma n$ reaction,
- 17.6 MeV and 14.6 MeV from ${}^7\text{Li}(p, \gamma){}^8\text{Be}$ reaction,
- 11.7 MeV from ${}^{11}\text{B}(p, 2\gamma){}^{12}\text{C}$ reaction.

The selection criteria for those calibration events are detailed in [48] and [55]. We take two events from the above calibration data and overlay them, summing the number of photo-electrons PMT by PMT. These pseudo 2γ events are generated using both data and MC events.

5 Event reconstruction

We describe here the reconstruction methods and their performance, focusing on high-level objects; descriptions of the manipulation of low-level objects, including waveform analysis and calibration procedures, are available in [9, 37]. The e^+ reconstruction (Sect. 5.1) is identical to that used in the $\mu^+ \rightarrow e^+ \gamma$ decay analysis in [9]. The 2γ reconstruction was developed originally for this analysis (Sect. 5.2). After reconstructing the e^+ and two γ s, the reconstructed variables are combined to reconstruct the X decay vertex (Sect. 5.3).

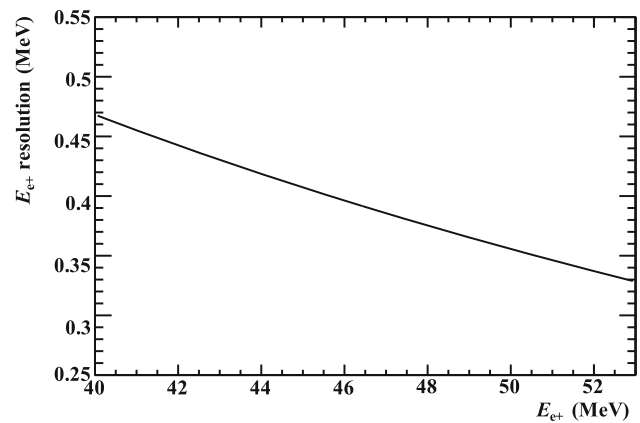


Fig. 8 E_{e^+} resolution as a function of E_{e^+}

5.1 Positron reconstruction

Positron trajectories in the DCH are reconstructed using the Kalman filter technique [56, 57] based on the GEANE software [58]. This technique takes the effect of materials into account. After the first track fitting in DCH, the track is propagated to the TC region to test matching with TC hits. The matched TC hits are connected to the track and then the track is refined using the TC hit time. Finally, the fitted track is propagated back to the stopping target, and the point of intersection with the target defines the muon decay vertex position (\mathbf{x}_{e^+}) and momentum vector that defines the e^+ emission angles (θ_{e^+} , ϕ_{e^+}). The e^+ emission time (t_{e^+}) is reconstructed from the TC hit time minus the e^+ flight time.

Positron tracks satisfying the following criteria are selected: the number of hits in DCH is more than six, the reduced chi-square of the track fitting is less than 12, the track is matched with a TC hit, and the track is successfully propagated back to the fiducial volume of the target. If multiple tracks in an event pass the criteria, only one track is selected and passed to the following analysis, based on the covariance matrix of the track fitting as well as the number of hits and the reduced chi-square.

The resolutions are evaluated based on the MC, tuned to data using double-turn events; tracks traversing DCH twice (two turns) are selected and reconstructed independently by using hits belonging to each turn. The difference in the reconstruction results by the two turns indicates the resolution. The MC results are smeared so that the double-turn results become the same as those with the data. Figure 8 shows the E_{e^+} resolution as a function of E_{e^+} . The angular resolutions also show a similar E_{e^+} dependence. The ϕ_{e^+} and θ_{e^+} -resolutions for $m_X = 20$ (45) MeV/ c^2 are $\sigma_{\phi_{e^+}} \sim 12$ (15) mrad and $\sigma_{\theta_{e^+}} \sim 10$ (11) mrad, respectively. The time resolution is $\sigma_{t_{e^+}} \sim 100$ (130) ps.

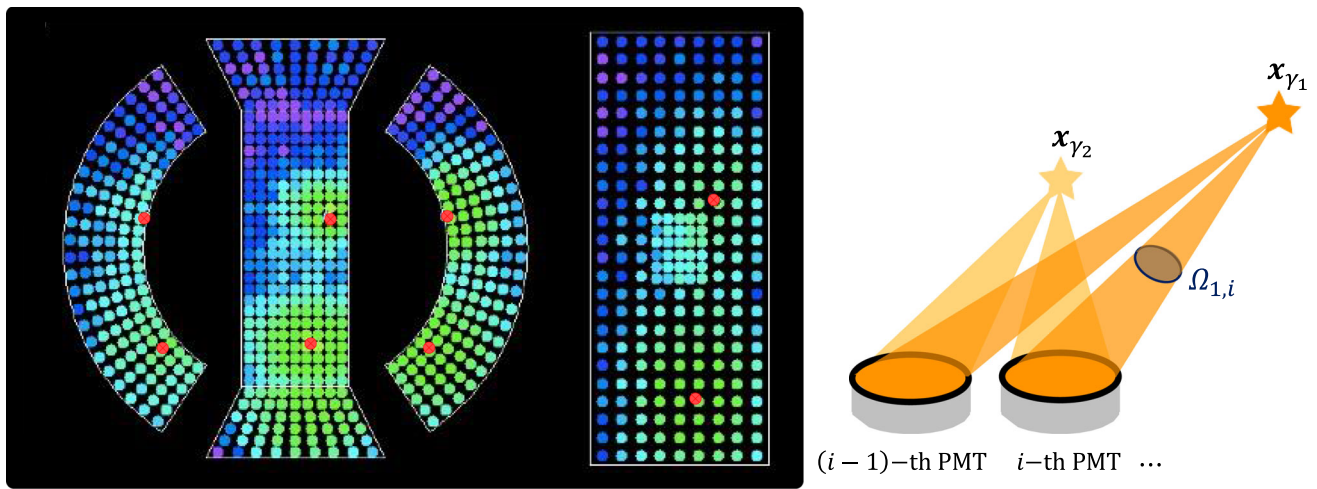


Fig. 9 Event display of the LXe photon detector for a 2γ event (in a development view). The red points show the interaction positions of the two γ s projected to each face. Each circular marker denotes a PMT. The

colour indicates the measured light yield, which is the sum of photons from the two showers induced by the two γ s as depicted in the right figure

5.2 Photon reconstruction

Coordinates (u, v, w) are used in the LXe photon detector local coordinate system rather than the global coordinates (x, y, z) : u coincides with z , $v = r_{in}(\pi - \phi)$ where $r_{in} = 67.85$ cm is the radius of the inner face, and $w = r - r_{in}$ is the depth measured from the inner face.

5.2.1 Multiple photon search

A peak search is performed based on the light distributions on the LXe photon detector inner and outer faces by using *TSpectrum2* [59,60]. The threshold of the peak light yield is set to 200 photons. Events that have more than one peak are identified as multiple- γ events.

5.2.2 Position and energy

Hereafter, only the multiple- γ events are analysed. When more than two γ s are found, we select the two with the largest energy by performing the position-energy fitting described in this subsection on different combinations of two γ s.

Figure 9 shows a typical event display of a 2γ event. Each PMT detects photons from the two γ s. The key point of the 2γ reconstruction is how to divide the number of photons detected in each PMT into a contribution from each γ .

Calculation of initial values First, the positions of the detected peaks in (u, v) are used as the initial estimate with $w = 1.5$ cm. Given the interaction point of each γ within the LXe photon detector, the contribution from each γ to each PMT can be calculated as follows. Assuming the ratio of the

energy of γ_1 to that of γ_2 to be $E_{\gamma_1} : E_{\gamma_2} = R_1 : (1 - R_1)$ ($0 < R_1 < 1$, at first R_1 is set to 0.5), the fractions of the number of photons from γ_1 is calculated as

$$R_{1,i} = \frac{R_1 \Omega_{1,i}}{R_1 \Omega_{1,i} + (1 - R_1) \Omega_{2,i}}, \tag{1}$$

where $\Omega_{1,i}$ is the solid angle subtended by the i -th PMT from the γ_1 interaction point. The total number of photons generated by $\gamma_{1(2)}$, $M_{\text{pho},1(2)}$, is calculated from the ratio $R_{1,i}$ and the number of photons at each PMT $N_{\text{pho},i}$ as

$$M_{\text{pho},1(2)} = \sum_i^{n_{\text{PMT}}^{\text{all}}} (R_{1,i} \times N_{\text{pho},i}). \tag{2}$$

Then, R_1 is updated to $R_1 = M_{\text{pho},1} / (M_{\text{pho},1} + M_{\text{pho},2})$ and calculations (1) and (2) are repeated with the updated R_1 . This procedure is iterated four times.

Position pre-fitting Inner PMTs that detect more than 10 photons are selected to perform a position pre-fitting. The following quantity is minimised during the fitting:

$$\chi_{2\gamma}^2 = \sum_i^{n_{\text{PMT}}^{\text{selected}}} \frac{(N_{\text{pho},i} - M_{\text{pho},1} \Omega_i(\mathbf{x}_{\gamma_1}) - M_{\text{pho},2} \Omega_i(\mathbf{x}_{\gamma_2}))^2}{\sigma_{\text{pho},i}^2(N_{\text{pho},i})}, \tag{3}$$

where $\sigma_{\text{pho},i}^2(N_{\text{pho},i}) = N_{\text{pho},i} / \epsilon_{\text{PMT},i}$ with $\epsilon_{\text{PMT},i}$ being the product of quantum and collection efficiencies of the PMT. This fitting is performed⁴ separately for each γ : first, the

⁴ This fitting is performed by a grid search in $\mathbf{x}_{\gamma_{1(2)}} = (u, v, w)_{\gamma_{1(2)}}$ space for good stability, while subsequent fittings are performed with MINUIT [61] for better precision.

light distribution is fitted with $\{x_{\gamma_1}, M_{\text{pho},1}\}$ as free parameters, while the other parameters are fixed; next, the light distribution is fitted with $\{x_{\gamma_2}, M_{\text{pho},2}\}$ as free parameters, while the other parameters are fixed.

Energy pre-fitting To improve the energy estimation, $M_{\text{pho},1(2)}$ are fitted while the other parameters are fixed. The same $\chi^2_{2\gamma}$ (Eq. (3)) is used but only with PMTs that detect more than 200 photo-electrons.

The γ with the larger M_{pho} is defined as γ_1 and the second largest one is defined as γ_2 in the later analysis.

Position and energy fitting At the final step, all the parameters are fitted simultaneously to eliminate the dependence of the fitted positions on the value of $M_{\text{pho},1(2)}$ initially assumed. The best-fit value of $M_{\text{pho},1(2)}$ is used to update R_1 and calculations (1) and (2) are repeated again to obtain the final value of $M_{\text{pho},1(2)}$. Finally, it is converted into $E_{\gamma_{1(2)}}$:

$$E_{\gamma_{1(2)}} = U(x_{\gamma_{1(2)}}) \times H(T) \times S \times M_{\text{pho},1(2)}, \quad (4)$$

where $U(x_{\gamma_{1(2)}})$ is a uniformity correction factor, $H(T)$ is a time variation correction factor with T being the calendar time when the event was collected, and S is a factor to convert the number of photons to energy. The functions $U(x_{\gamma_{1(2)}})$ and $H(T)$ are mainly derived from the 17.6-MeV line from ${}^7\text{Li}(p, \gamma){}^8\text{Be}$ reaction, which was measured twice per week. The factor S is calibrated using the 54.9-MeV line from π^0 decay, taken once per year.

Energy-ratio correction Both the MC data and the pseudo- 2γ data show an anti-correlation between the errors⁵ in E_{γ_1} and E_{γ_2} as shown in Fig. 10a, while their sum is not biased. Defining R_1^{true} as the R_1 for true energies for MC data and that for energies reconstructed without the overlay for real data, the reconstruction bias in both the MC data and the pseudo- 2γ data is apparent by the linear dependence of R_1/R_1^{true} on R_1 as shown in Fig. 10b. This bias is removed by applying a correction to the reconstructed energies; the correction coefficients are evaluated from the pseudo- 2γ data with different combinations of calibration data.

Position correction Oblique incidence of γ s to the inner face results in a bias of the fitted positions. This bias was checked and corrected for using the MC simulation. No bias is observed in the v direction while a significant bias is observed in the u direction. This is because the γ s from the MEx2G decay enter the LXe photon detector almost perpendicularly in the x - y view but enter with angles in the z - r view. Since the u bias arises from the direction and the size of the shower, it depends on the u coordinate and the energy. Therefore, the correction function is prepared as a function of $u_{\gamma_{1(2)}}$ and $E_{\gamma_{1(2)}}$.

⁵ Error is defined as the difference between the reconstructed energy and the true energy deposit for MC data and between the reconstructed one with 2γ and that with single γ for pseudo- 2γ data.

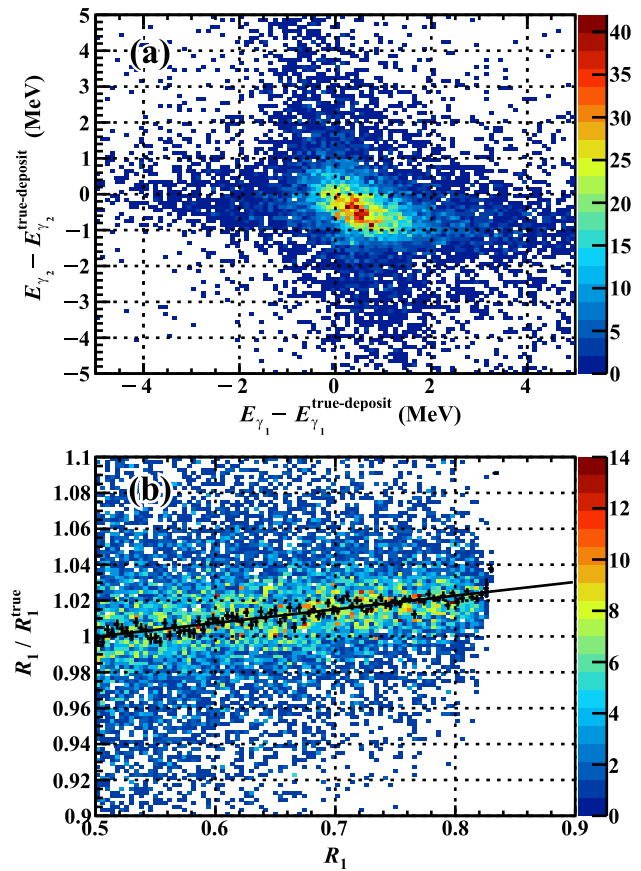


Fig. 10 **a** Scatter plot of the energy reconstruction errors (MC). $E_{\gamma_{1(2)}}^{\text{true-deposit}}$ is the MC true value of the energy deposited in the LXe. **b** Dependence of the reconstructed energy ratio bias as a function of the reconstructed energy ratio (MC)

Selection criteria To guarantee the quality of the reconstruction, the following criteria are imposed on the reconstruction results: the fits for both γ s converge; the two γ positions are both within the detector fiducial volume defined as $|u| < 25 \text{ cm} \wedge |v| < 71 \text{ cm}$; the distance between the two γ s on the inner face is $d_{uv} > 20 \text{ cm}$; $E_{\gamma_{1(2)}} > 10 \text{ MeV}$; and $E_{\gamma_1} + E_{\gamma_2} > 40 \text{ MeV}$.

Probability density function for E_γ The probability density function (PDF) for $E_{\gamma_{1(2)}}$ is evaluated by means of the MC simulation. To tune the MC, the pseudo- 2γ data of MC and data are used. It is asymmetric with a lower tail and modelled as follows:

$$P(E_\gamma | E_\gamma^{\text{true}}) = f \cdot F(E_\gamma; E_\gamma^{\text{true}}, E_t^{\text{narrow}}, \sigma_{E_\gamma}^{\text{narrow}}) + (1 - f) \cdot F(E_\gamma; E_\gamma^{\text{true}}, E_t^{\text{wide}}, \sigma_{E_\gamma}^{\text{wide}}), \quad (5)$$

where

$$F(E_\gamma; E_\gamma^{\text{true}}, E_t, \sigma_{E_\gamma})$$

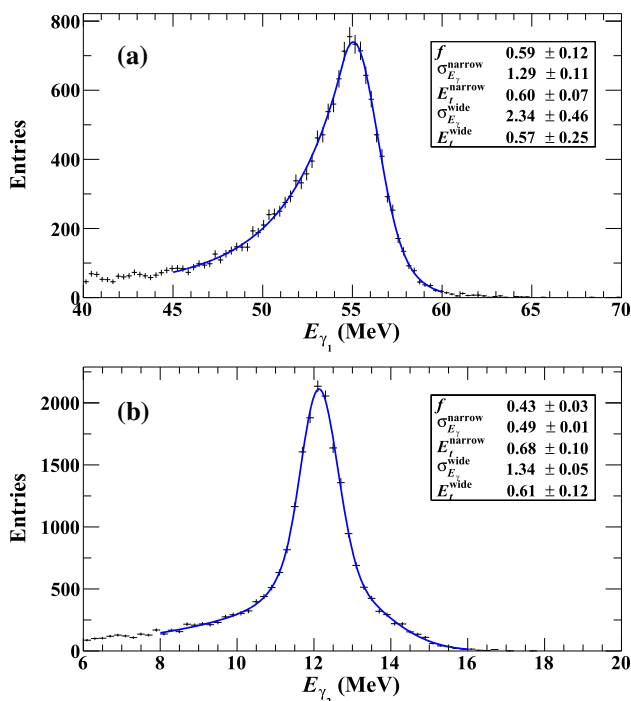


Fig. 11 Energy response to MC 2γ events with $E_{\gamma_1}^{\text{true}} = 55$ MeV and $E_{\gamma_2}^{\text{true}} = 12$ MeV. The blue curves are the PDFs fit to the distributions. See text for the formula of the PDFs

$$= \begin{cases} A \exp\left(-\frac{(E_\gamma - E_\gamma^{\text{true}})^2}{2\sigma_{E_\gamma}^2}\right) & E_\gamma > E_\gamma^{\text{true}} - E_t \\ A \exp\left(\frac{E_t}{\sigma_{E_\gamma}^2} \left(\frac{E_t}{2} + (E_\gamma - E_\gamma^{\text{true}})\right)\right) & E_\gamma \leq E_\gamma^{\text{true}} - E_t \end{cases}, \quad (6)$$

E_γ is a reconstructed γ energy, E_γ^{true} is the true value, f is the fraction of the narrow component, A is a normalisation parameter, E_t is the transition parameter between the Gaussian and exponential components, and σ_{E_γ} is the standard deviation of the Gaussian component describing the width on the high-energy side. The parameters E_t and σ_{E_γ} are correlated with each other, different for the narrow and wide components, and are dependent on E_γ^{true} . Figure 11 shows an example of the PDFs for 2γ events with $E_{\gamma_1}^{\text{true}} = 55$ MeV and $E_{\gamma_2}^{\text{true}} = 12$ MeV.

Probability density functions for γ position The PDFs of γ position are almost independent of $E_{\gamma_{1(2)}}$ and hence (m_X, τ_X). They are represented by double Gaussians with fractions of tail components of $\sim 20\%$. The standard deviations of the core components are $\sigma_{x_{\gamma_{1(2)}}^{\text{core}}} = (5.4, 4.7, 6.5)$ mm in (u, v, w) coordinates, those of the tail components are $\sigma_{x_{\gamma_{1(2)}}^{\text{tail}}} = (29, 19, 45)$ mm.

5.2.3 Time

The interaction time of $\gamma_1(\gamma_2)$ can be reconstructed using the pulse time measured by each PMT ($t_{\text{PMT},i}$) by correcting for a delay time ($t_{\text{delay},\gamma_{1(2)},i}$) including the propagation time of the light between the interaction point and the PMT and the time-walk effect, and a time offset due to the readout electronics ($t_{\text{offset},i}$):

$$t_{\gamma_{1(2)},i} = t_{\text{PMT},i} - t_{\text{delay},\gamma_{1(2)},i} - t_{\text{offset},i}. \quad (7)$$

The single PMT time resolution $\sigma_{t,i}$ is approximately proportional to $1/\sqrt{N_{\text{pe},\gamma_{1(2)},i}}$ with $\sigma_{t,i}(N_{\text{pe},\gamma_{1(2)},i} = 500) \approx 500$ ps, where $N_{\text{pe},\gamma_{1(2)},i}$ is the number of photo-electrons from $\gamma_1(\gamma_2)$.

These individual PMT measurements are combined to obtain the best estimate of the interaction time of $\gamma_1(\gamma_2)$ ($t_{\gamma_{1(2)}}$). The following χ^2 is minimised:

$$\chi_{\text{time}}^2 = \sum_i^{n_{\text{PMT}}^{\text{selected}}} \frac{(t_{\gamma_{1(2)},i} - t_{\gamma_{1(2)}})^2}{\sigma_{t,i}^2(N_{\text{pe},\gamma_{1(2)},i})}. \quad (8)$$

We use PMTs whose light yield from $\gamma_1(\gamma_2)$ is 5 times higher than that from $\gamma_2(\gamma_1)$ excluding PMTs whose light yield is less than 100 photons or which give large χ^2 contribution in the fitting.

The E_γ -dependent time resolution for single γ event is evaluated with the calibration runs and corrected for 2γ events using the MC:

$$\sigma_{t_{\gamma_{1(2)}}} = \sqrt{338^2/E_{\gamma_{1(2)}}(\text{MeV}) + 45^2} \text{ (ps)}. \quad (9)$$

5.3 Combined reconstruction

In this section, we present the reconstruction method for the $X \rightarrow \gamma\gamma$ vertex assuming a value for m_X in the reconstruction. We scan m_X in 20–45 MeV/ c^2 at 1 MeV/ c^2 intervals; each assumed mass results in a different reconstructed $X \rightarrow \gamma\gamma$ vertex position.

5.3.1 X decay vertex

A maximum likelihood fit is used in the reconstruction, with the following observables:

$$X = (E_{\gamma_1}, E_{\gamma_2}, \mathbf{x}_{\gamma_1}, \mathbf{x}_{\gamma_2}, \mathbf{x}_{e^+}, \theta_{e^+}, \phi_{e^+}). \quad (10)$$

The fit parameters are the following:

$$\Theta = (\cos \theta_{\text{rest}}, \phi_{\text{rest}}, \mathbf{x}_{\text{vtx}}), \quad (11)$$

where θ_{rest} is the γ emission angle in the X rest frame, ϕ_{rest} is the angle of the photons in the X rest frame with respect to the X momentum direction in the MEG coordinate system, and \mathbf{x}_{vtx} is the X decay vertex position. The function $L(\Theta)$

is defined as follows:

$$\begin{aligned}
 L(\Theta) &= P(E_{\gamma_1} | \cos \theta_{\text{rest}}, m_X) \\
 &\times P(E_{\gamma_2} | \cos \theta_{\text{rest}}, m_X) \\
 &\times P(\mathbf{x}_{\gamma_1} | \cos \theta_{\text{rest}}, \phi_{\text{rest}}, \mathbf{x}_{\text{vtx}}, \mathbf{x}_{e^+}, m_X) \\
 &\times P(\mathbf{x}_{\gamma_2} | \cos \theta_{\text{rest}}, \phi_{\text{rest}}, \mathbf{x}_{\text{vtx}}, \mathbf{x}_{e^+}, m_X) \\
 &\times P(\theta_{e^+} | \mathbf{x}_{\text{vtx}}, \mathbf{x}_{e^+}) \\
 &\times P(\phi_{e^+} | \mathbf{x}_{\text{vtx}}, \mathbf{x}_{e^+}) \\
 &\times P(l_X | \mathbf{x}_{\text{vtx}}, \mathbf{x}_{e^+}, \tau_X, m_X), \tag{12}
 \end{aligned}$$

where l_X is the X decay length. The term $P(\mathbf{x}_{e^+} | \mathbf{x}_{e^+}^{\text{true}})$ is omitted by approximating $\mathbf{x}_{e^+}^{\text{true}}$ by \mathbf{x}_{e^+} to reduce the fitting parameters.

The energy dependence of the $E_{\gamma_{1(2)}}$ PDF Eq. (5) is modelled with a morphing technique [62] using two quasi-monoenergetic calibration lines: the 11.7 MeV line from the nuclear reaction of $^{11}\text{B}(p, 2\gamma)^{12}\text{C}$ and the 54.9 MeV line from π^0 decay.

The PDFs of the γ position are approximated as double Gaussians to fit better tails in the PDF.

The positron angles are compared with those of the flipped direction of the X momentum ($-(\mathbf{x}_{\text{vtx}} - \mathbf{x}_{e^+})$) with PDFs approximated as single Gaussians.

The decay length is defined as $l_X = |\mathbf{x}_{\text{vtx}} - \mathbf{x}_{e^+}|$.⁶ Under the approximation $\sigma_{x_{e^+}} \rightarrow 0$, the PDF is

$$P(l_X | \mathbf{x}_{e^+}, \mathbf{x}_{\text{vtx}}, \tau_X, m_X) = \frac{1}{\gamma\beta c\tau_X} \cdot \exp\left(-\frac{l_X}{\gamma\beta c\tau_X}\right), \tag{13}$$

which is defined and normalised for $l_X \geq 0$. The approximation is justified because the transverse component of $\sigma_{x_{e^+}}$ is $\sim 1\text{--}2$ mm [55] while the longitudinal component is largely driven by the target thickness (~ 0.2 mm), which is to be compared with $\gamma\beta c\tau_X$ ranging between $\sim 6\text{--}30$ mm.

We fix $\tau_X = 20$ ps since the vertex reconstruction performance is almost independent of τ_X in the assumed range. This likelihood term effectively penalizes non-zero decay lengths using a scale that is fixed to the average expected decay length of 20 ps.

The \mathbf{x}_{vtx} resolution of the maximum-likelihood fit is evaluated via the MC to be $\sigma_{\mathbf{x}_{\text{vtx}}} = (8, 12)$ mm in the transverse and longitudinal directions.

We define an expression to quantify the goodness of the vertex fit as

$$\chi_{\text{vtx}}^2 = \sum_{\gamma=\gamma_1, \gamma_2} \left(\frac{E_\gamma - E_\gamma^{\text{best}}}{\sigma_{E_\gamma}}\right)^2 + \sum_{\gamma=\gamma_1, \gamma_2} \left(\frac{\mathbf{x}_\gamma - \mathbf{x}_\gamma^{\text{best}}}{\sigma_{\mathbf{x}_\gamma}}\right)^2$$

⁶ From the fifth and sixth terms in Eq. (12), the reason for using the absolute value of l_X rather than the signed value with the sign of $-(\mathbf{x}_{\text{vtx}} - \mathbf{x}_{e^+}) \cdot \mathbf{P}_{e^+}$ becomes apparent. If the signed value of the decay length were negative, the X angle would be flipped by π and the penalty would be huge preventing the fit to succeed.

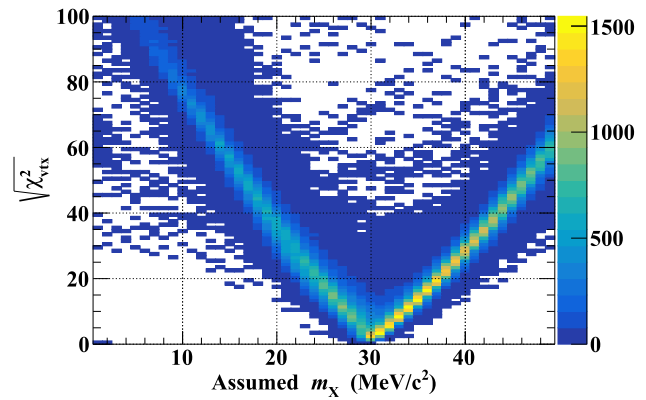


Fig. 12 $\sqrt{\chi_{\text{vtx}}^2}$ distribution for the MC signal events at $(m_X, \tau_X) = (30 \text{ MeV}/c^2, 20 \text{ ps})$ as a function of m_X assumed in the reconstruction

$$+ \left(\frac{\theta_X - \theta_X^{\text{best}}}{\sigma_{\theta_X}}\right)^2 + \left(\frac{\phi_X - \phi_X^{\text{best}}}{\sigma_{\phi_X}}\right)^2 + \left(\frac{l_X^{\text{best}}}{\gamma\beta c\tau_X}\right)^2. \tag{14}$$

The variables with the superscript ‘‘best’’ indicate the best-fitted parameters in the maximum likelihood fit and the variables with no superscript indicate the measured ones. Here, $(\theta_X, \phi_X) = (\pi - \theta_{e^+}, \pi + \phi_{e^+})$ is the direction opposite to $(\theta_{e^+}, \phi_{e^+})$.

The σ of each variable is the corresponding resolution when the distribution is approximated as a single Gaussian. This expression is not expected to follow a χ^2 distribution because the PDFs of the variables are not in general Gaussian. The last term is quadratic by analogy with the other terms and its expression has been found to be effective in separating signal from background. The rationale for using Eq. (14) is to provide a powerful discriminator between signal and background as shown later in Fig. 14f.

Figure 12 shows the dependence of χ_{vtx}^2 ⁷ on the assumed value of m_X for the MC signal events, providing another rationale for Eq. (14). When the assumed value is the same as the true value ($m_X = 30 \text{ MeV}/c^2$ in this case), the resultant χ_{vtx}^2 becomes minimum on average. The effective m_X resolution is $\sim 2.5 \text{ MeV}/c^2$.

5.3.2 Momentum

Given the vertex position, the momentum of each γ can be calculated. The sum of the final-state three particles momenta,

$$\mathbf{P}_{\text{sum}} \equiv \mathbf{P}_{e^+} + \mathbf{P}_{\gamma_1} + \mathbf{P}_{\gamma_2}, \tag{15}$$

should be 0 for the MEX2G events.

⁷ For better display, we take the square root of χ_{vtx}^2 here.

5.3.3 Relative time

The time difference between the 2γ s at the X vertex is calculated as

$$t_{\gamma\gamma} = \left(t_{\gamma_1} - \frac{l_{\gamma_1}}{c} \right) - \left(t_{\gamma_2} - \frac{l_{\gamma_2}}{c} \right), \tag{16}$$

where $l_{\gamma_{1(2)}}$ is the distance between the $\gamma_{1(2)}$ interaction point in the LXe photon detector and the X vertex position, $l_{\gamma_{1(2)}} = |\mathbf{x}_{\gamma_{1(2)}} - \mathbf{x}_{\text{vtx}}|$. The relative position of the vertices is such that this definition is identical to the signed distance defined according to the X direction and therefore the distribution is centred at 0 for MEX2G events.

The time difference between γ_1 and e^+ at the muon vertex is calculated as

$$t_{\gamma_1 e^+} = \left(t_{\gamma_1} - \frac{l_{\gamma_1}}{c} - \frac{l_X}{\beta c} \right) - t_{e^+}. \tag{17}$$

With the unsigned definition of l_X the distribution is slightly offset with respect to 0 for MEX2G events as visible in Fig. 14d.

6 Dataset and event selection

We use the full MEG dataset, collected in 2009–2013, as was used in the $\mu^+ \rightarrow e^+\gamma$ search reported in [9]. As described in Sect. 2, the $\mu^+ \rightarrow e^+\gamma$ trigger data are used in this analysis. In total, $7.5 \times 10^{14} \mu^+$ s were stopped on the target.

A pre-selection was applied at the first stage of the $\mu^+ \rightarrow e^+\gamma$ decay analysis, requiring that at least one positron track is reconstructed and the time difference between signals in the LXe photon detector and TC is in the range $-6.9 < t_{\text{LXe-TC}} < 4.4$ ns. At this stage, aiming to select the $\mu^+ \rightarrow e^+\gamma$ decays, the time of the LXe photon detector is reconstructed with PMTs around the largest peak found in the peak search (Sect. 5.2.1). This retained $\sim 16\%$ of the dataset, on which the full event reconstruction for the $\mu^+ \rightarrow e^+\gamma$ decay analysis was performed. Before processing the MEX2G dedicated reconstruction, we applied an additional event selection using the $\mu^+ \rightarrow e^+\gamma$ reconstruction results. It was based on the existence of multiple (≥ 2) γ s and the total energy of the γ s⁸ and e^+ (E_{total}) being $|E_{\text{total}} - m_\mu| < 0.2m_\mu$. This selection reduces the dataset by an additional factor of ~ 300 . We applied the MEX2G dedicated reconstruction (Sects. 5.2.2, 5.2.3, and 5.3) to this selected dataset.

A blind region was defined containing the events satisfying the cuts $|t_{\gamma_1 e^+}| < 1 \text{ ns} \wedge |t_{\gamma\gamma}| < 1 \text{ ns}$. This blind region is large enough to hide the signal. Those events were sent in

⁸ At this stage, the sum of the multiple γ s' energy is reconstructed without being separated into each γ .

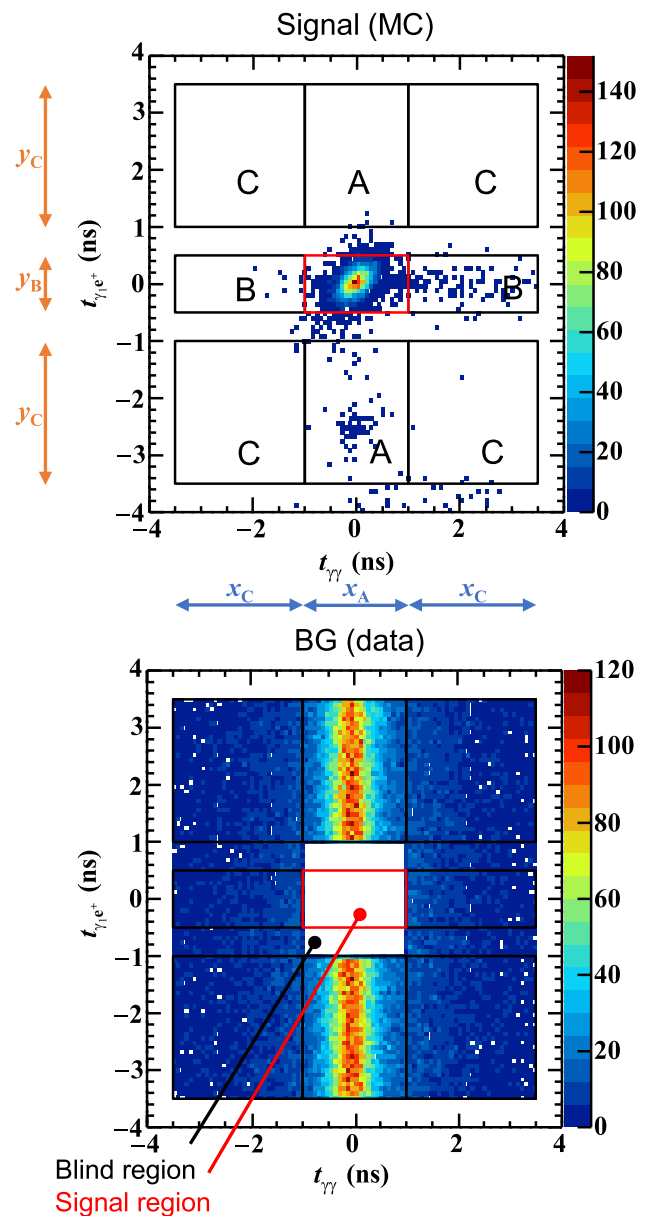


Fig. 13 Top: Signal (MC) and bottom: background (sideband data) event distributions in the $t_{\gamma_1 e^+} - t_{\gamma\gamma}$ plane before the signal selection criteria are applied. (20MeV/c², 20ps) case is shown as an example. The time sideband regions (A, B, C) and the signal region (the red box) are also shown

a separated data-stream and were not used in the definition of the analysis strategy including cuts; background events in the signal region were estimated without using events in the blind region. After the analysis strategy was defined, the blind region was opened and events in this region were added to perform the last step of analysis.

The accidental background can be estimated from the off-time sideband regions defined in Fig. 13. There are three such regions: A, B, and C; each containing a different combination of the types of background as defined in Sect. 3. The outer

boundary of the time sidebands, $|t_{\gamma_1 e^+}| < 3.5 \text{ ns} \wedge |t_{\gamma\gamma}| < 3.5 \text{ ns}$, are determined so that the background distribution is not deformed by the time-coincidence trigger condition. The widths x_A and y_B in Fig. 13 are the same as the outer boundary of the signal region defined depending on m_X by the signal selection criteria described below.

The following seven variables are used for the signal selection:

1. E_{e^+} : the e^+ energy.
2. E_{sum} : the total energy of the three particles.
3. $|\mathbf{P}_{\text{sum}}|$: the magnitude of the sum of the three particles' momenta.
4. d_{uv} : the distance between the 2γ positions on the LXe photon detector inner face.
5. $t_{\gamma_1 e^+}$: the time difference between γ_1 and e^+ calculated in Eq. (17).
6. $t_{\gamma\gamma}$: the time difference between 2γ s calculated in Eq. (16).
7. χ_{vtx}^2 : the goodness of vertex fitting calculated in Eq. (14).

First, we fix the E_{e^+} selection to require $|E_{e^+} - E_{e^+}^{m_X}| < 1 \text{ MeV}$, where $E_{e^+}^{m_X}$ is the e^+ energy for the MEx2G decay with m_X . This selection is also used in the Michel normalisation described in Sect. 7.

Next, we optimise the cut thresholds for the other variables to maximise the experimental outcomes. Distributions of these variables for the signal and background at a parameter set (20 MeV/c², 20 ps) are shown in Fig. 14. All other selection criteria, such as trigger and reconstruction conditions as well as the E_{e^+} selection, are applied. The time sideband events are used for the background distribution, while MC samples are used for the signal distribution.

Punzi's expression [63] is used as a figure of merit

$$F_{\text{Punzi}} = \frac{\epsilon_{\text{selection}}}{b^2 + 2a\sqrt{N_{\text{BG}}} + b\sqrt{b^2 + 4a\sqrt{N_{\text{BG}}} + 4N_{\text{BG}}}}, \tag{18}$$

where a and b are the significance and the power of a test, respectively, $\epsilon_{\text{selection}}$ is the selection efficiency for the signal, and N_{BG} is the expected number of background events. The values of a and b should be defined before the analysis, and we set $a = 3$, $b = 1.28$ (= 90%), where b is set to the value appropriate to the confidence level being used to set the upper limit when a non-significant result is obtained.

The optimisation process is divided into two steps. In the first step, we optimise the cut thresholds of variables 2–6, independently for each variable in order to maintain high statistics in the sidebands. Because the absolute value of N_{BG} does not make sense in this independent optimisation process, we approximate N_{BG} to ϵ_{BG} , a selection efficiency for the background events calculated using the time sideband

samples selected up to this point. Because of this approximation, the first step leads to suboptimal criteria.

In the second step, after all other selection criteria are applied, the threshold for χ_{vtx}^2 is optimised to give the highest F_{Punzi} . In this step, to estimate N_{BG} from the low statistics in the sideband regions, we use a kernel-density-estimation method [64] to model the continuous event distribution.

The cut thresholds are optimised at 5 MeV/c² intervals in m_X , while the same thresholds are used for different τ_X for each m_X . The optimised thresholds for $m_X = 20 \text{ MeV}/c^2$ are shown as black lines in Fig. 14. These cuts result in $\epsilon_{\text{selection}} = 67\%$ ($m_X = 45 \text{ MeV}/c^2$) – 51% ($m_X = 20 \text{ MeV}/c^2$).

7 Single event sensitivity

The single event sensitivity of the MEx2G decay s is defined as follows:

$$\mathcal{B}_{\text{MEx2G}} = s \times N_{\text{MEx2G}}, \tag{19}$$

where N_{MEx2G} is the expected number of signal events in the signal region. We calculate it using Michel decay ($\mu^+ \rightarrow e^+ \nu \bar{\nu}$) events taken at the same time with the $\mu^+ \rightarrow e^+ \gamma$ trigger. This Michel normalisation is beneficial for the following reasons. First, systematic uncertainties coming from the muon beam are cancelled because beam instability is included in both Michel triggered and the $\mu^+ \rightarrow e^+ \gamma$ triggered events. Moreover, we do not need to know the μ^+ stopping rate nor the live DAQ time. Second, most of the systematic uncertainties coming from e^+ detection are also cancelled. The absolute value of e^+ efficiency is not needed.

The number of Michel events is given by

$$N_{\text{Michel}} = N_{\mu^+} \cdot \frac{\mathcal{B}_{\text{Michel}} \cdot f_{\text{Michel}}}{p_{\text{Michel}} \cdot p_{\text{correction}}} \cdot A_{\text{Michel}} \cdot \epsilon_{\text{Michel}}, \tag{20}$$

where

- N_{μ^+} : the number of stopped μ^+ s;
- $\mathcal{B}_{\text{Michel}}$: branching ratio of the Michel decay (≈ 1);
- f_{Michel} : branching fraction of the selected energy region (7%–10% depending on m_X);
- p_{Michel} : prescaling factor of the Michel trigger ($= 10^7$);
- $p_{\text{correction}}$: correction factor of p_{Michel} depending on the muon beam intensity;
- A_{Michel} : geometrical acceptance of the spectrometer for Michel e^+ s;
- ϵ_{Michel} : e^+ efficiency for Michel events within the geometrical acceptance of the spectrometer.

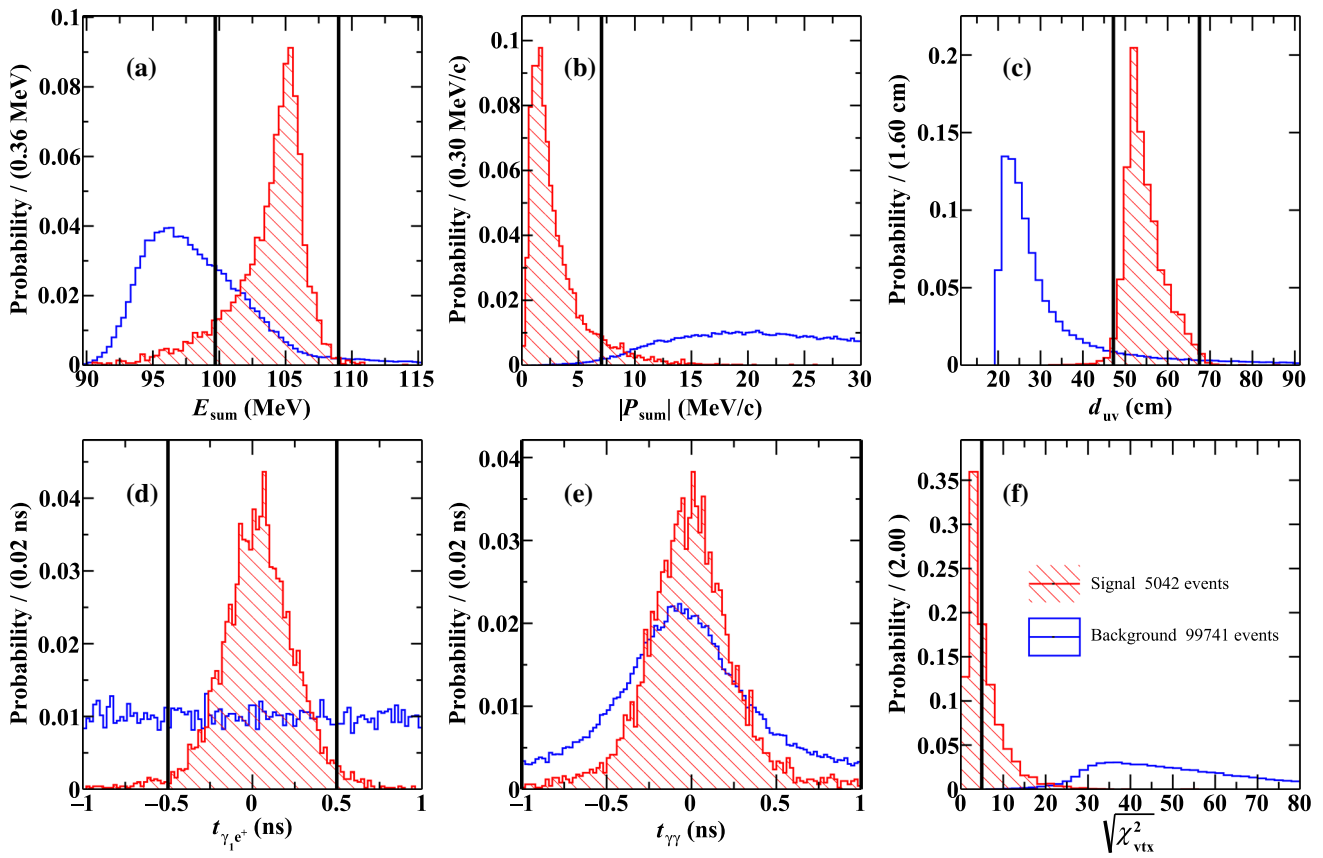


Fig. 14 Distributions of variables used in the event selection for $(m_X, \tau_X) = (20 \text{ MeV}/c^2, 20 \text{ ps})$ case. The hatched histograms show the distribution of MC signal events while the blank histograms that of background events; each histogram is normalised to 1. The vertical lines show the optimised thresholds. **a** The peak value of the signal

distribution is at m_μ with $\text{FWHM}_{E_{\text{sum}}} = 2.7 \text{ MeV}$. **c** Cut-off at 20 cm in the background distribution comes from one of the 2γ reconstruction conditions. **e** The threshold lines are not visible because they are set to $\pm 1 \text{ ns}$. For a detailed definition of the variables see Sect. 6

The number of MEx2G events is given by

$$N_{\text{MEx2G}} = N_{\mu^+} \cdot \frac{\mathcal{B}_{\text{MEx2G}}}{P_{\text{MEG}}} \cdot A_{e^+} \cdot \epsilon_{e^+} \cdot \epsilon_{2\gamma} \cdot \epsilon_{\text{DM}} \cdot \epsilon_{\text{selection}}, \quad (21)$$

where

- P_{MEG} : prescaling factor of the $\mu^+ \rightarrow e^+\gamma$ trigger (=1);
- A_{e^+} : geometrical acceptance of the spectrometer for MEx2G e^+ s;
- ϵ_{e^+} : e^+ efficiency for MEx2G events conditional to e^+ s in the geometrical acceptance of the spectrometer;
- $\epsilon_{2\gamma}$: the product of 2γ geometrical acceptance and 2γ trigger, detection, and reconstruction efficiency, conditional to the e^+ detection;
- ϵ_{DM} : the trigger direction match efficiency conditional to the e^+ and 2γ detection (Fig. 6);
- $\epsilon_{\text{selection}}$: the signal selection efficiency.

Using Eqs. (19)–(21), an estimate of the SES (s_0) is given by

$$s_0^{-1} = N_{\text{Michel}} \frac{1}{\mathcal{B}_{\text{Michel}} \cdot f_{\text{Michel}}} \cdot \frac{P_{\text{Michel}} \cdot P_{\text{correction}}}{P_{\text{MEG}}} \cdot \frac{A_{e^+}}{A_{\text{Michel}}} \cdot \frac{\epsilon_{e^+}}{\epsilon_{\text{Michel}}} \cdot \epsilon_{2\gamma} \cdot \epsilon_{\text{DM}} \cdot \epsilon_{\text{selection}}. \quad (22)$$

The geometrical acceptance of the spectrometer is common, hence $A_{e^+}/A_{\text{Michel}} = 1$; the estimate of the relative e^+ efficiency is $\epsilon_{e^+}/\epsilon_{\text{Michel}} = 89\%$ ($m_X = 45 \text{ MeV}/c^2$) – 97% ($m_X = 20 \text{ MeV}/c^2$) increasing monotonically with m_X . The estimate of $\epsilon_{2\gamma}$ is shown in Fig. 15; $\epsilon_{2\gamma} = 0.6\%$ ($m_X = 45 \text{ MeV}/c^2$) – 2.9% ($m_X = 20 \text{ MeV}/c^2$), decreasing monotonically with m_X . This dependence comes mainly from the 2γ acceptance: for increasing m_X , the opening angle between the 2γ s becomes larger, resulting in a decreasing efficiency.

The systematic uncertainties are summarised in Table 1. The uncertainty in the 2γ detection efficiency and that in the MC smearing parameters are the dominant components.

Table 1 Systematic uncertainties in the single event sensitivity ($\tau_X = 20$ ps)

m_X (MeV/c ²)	20	25	30	35	40	45
Michel e ⁺ counting	0.99%	1.1%	1.1%	0.93%	1.6%	2.8%
Relative e ⁺ efficiency	1.4%	0.18%	0.31%	0.55%	0.89%	1.3%
2 γ acceptance	1.3%	2.0%	3.4%	2.9%	5.4%	1.9%
γ trigger efficiency	0.98%	0.32%	0.26%	0.52%	1.4%	3.2%
2 γ detection efficiency	7.9%	7.9%	7.9%	7.9%	7.9%	7.9%
MC statistics	1.8%	1.9%	2.2%	3.1%	1.9%	4.7%
MC smearing	4.8%	3.4%	3.8%	5.3%	3.3%	14%
Total	9.7%	9.1%	9.7%	11%	10%	17%

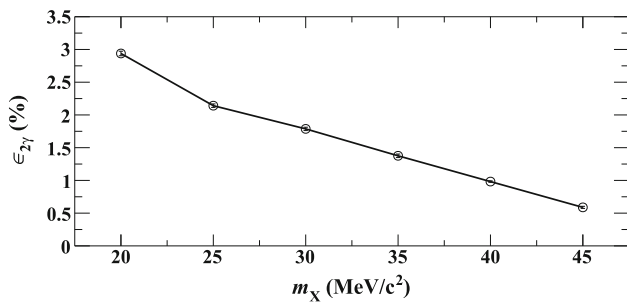


Fig. 15 $\epsilon_{2\gamma}$ (see the text for the definition) versus m_X for $\tau_X = 20$ ps

The estimated value of SES is $s_0 = (2.9 \pm 0.3) \times 10^{-12}$ (20 MeV/c²) – $(6.3 \pm 1.1) \times 10^{-10}$ (45 MeV/c²) for $\tau_X = 20$ ps increasing monotonically with m_X . The e⁺ efficiency is $\epsilon_{e^+} = 1\%$ (45 MeV/c²) – 36% (20 MeV/c²) decreasing monotonically with m_X , estimated with the MC, although this quantity is not necessary for the normalisation. The overall efficiency for the MEx2G events conditional to the e⁺ in the geometrical acceptance of the spectrometer is therefore $\epsilon_{\text{MEx2G}} = 2.0 \times 10^{-5}$ (45 MeV/c²) – 4.7×10^{-3} (20 MeV/c²) decreasing monotonically with m_X .

8 Statistical treatment of background and signal

In the following, we describe how we estimate the expected number of background events in the signal region (N_{BG}) from the numbers of events observed in sidebands A, B, and C ($N_{\text{A}}^{\text{obs}}$, $N_{\text{B}}^{\text{obs}}$, and $N_{\text{C}}^{\text{obs}}$).

There are three types of accidental background events defined in Sect. 3. The expected number of background events in the signal region is given by

$$N_{\text{BG}} = N_1 + N_2 + N_3, \tag{23}$$

where N_1, N_2, N_3 are the expected numbers of background events in the signal region from the types 1, 2, and 3, respectively. Sideband A has the contributions from types 2 and 3,

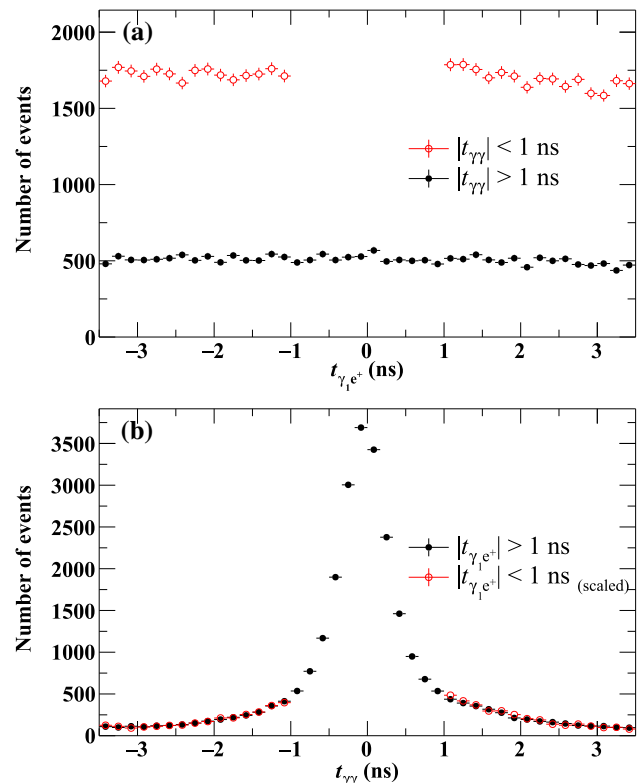


Fig. 16 Time distributions in the sideband regions for (20 MeV/c², 20 ps). (a) $t_{\gamma_1 e^+}$ distributions for $|t_{\gamma\gamma}| < 1$ ns (red open circles) and for $1 < |t_{\gamma\gamma}| < 3.5$ ns (black closed circles). (b) $t_{\gamma\gamma}$ distributions for $|t_{\gamma_1 e^+}| < 1$ ns (red open circles) and for $1 < |t_{\gamma_1 e^+}| < 3.5$ ns scaled by the ratio of the time ranges (black closed circles). A loose cut is applied: $|E_{e^+} - E_{e^+}^{m_X}| < 1$ MeV \wedge $E_{\text{sum}} < 115$ MeV \wedge $|\mathbf{p}_{\text{sum}}| < 30$ MeV/c \wedge $d_{uv} < 90$ cm \wedge $\chi_{\text{vtx}}^2 < 80$

B has the contributions from types 1 and 3, and C has the contribution from type 3.

Figure 16 shows the time distributions in the sideband regions. A peak of type 2 on a flat component of type 3 is observed in the $t_{\gamma\gamma}$ distribution, while a peak of type 1 is not clearly visible in the $t_{\gamma_1 e^+}$ distribution. The uniformity of the accidental backgrounds is examined using these distributions; the number of events in $(|t_{\gamma_1 e^+}| < 1 \text{ ns} \wedge 1 < |t_{\gamma\gamma}| <$

3.5 ns) is compared to the the number of events interpolated from the region ($1 < |t_{\gamma_1 e^+}| < 3.5 \text{ ns} \wedge 1 < |t_{\gamma\gamma}| < 3.5 \text{ ns}$) scaled by the ratio of the widths of the time ranges (2 ns/5 ns). They agree within 1.7% (the central part, including type 1, is 1.7% larger than the interpolation). In Fig. 16b, $t_{\gamma\gamma}$ the distribution for $1 < |t_{\gamma_1 e^+}| < 3.5 \text{ ns}$ is superimposed on that for $|t_{\gamma_1 e^+}| < 1 \text{ ns}$ after scaling by the time range ratio. The tail component of type 2 is consistent in these regions. The errors on the background estimations by the interpolation are thus negligibly small compared with the statistical uncertainties in $N_A^{\text{obs}}, N_B^{\text{obs}}, N_C^{\text{obs}}$.

Using N_1, N_2, N_3 , the expected numbers of events in sidebands A, B, C can be calculated as follows:

$$N_A^{\text{exp}} = N_2 \times \frac{2y_C}{y_B} + N_3 \times \frac{2y_C}{y_B}, \tag{24}$$

$$N_B^{\text{exp}} = N_1 \times \frac{2x_C}{x_A} + N_3 \times \frac{2x_C}{x_A} + N_2 \times f_{\text{escape}}, \tag{25}$$

$$N_C^{\text{exp}} = N_3 \times \frac{2y_C}{y_B} \times \frac{2x_C}{x_A} + N_2 \times f_{\text{escape}} \times \frac{2y_C}{y_B}, \tag{26}$$

where $x_{A(C)}$ and $y_{B(C)}$ are the sizes of the signal regions (sideband regions) in $t_{\gamma\gamma}$ and $t_{\gamma_1 e^+}$, respectively, as defined in Fig. 13, and $f_{\text{escape}} = 0.171 \pm 0.003$ is the fraction of type 2 events in $|t_{\gamma\gamma}| > 1 \text{ ns}$.

The likelihood function for N_{BG} is given from the Poisson statistics as,

$$\begin{aligned} &\mathcal{L}(N_{BG} | N_A^{\text{obs}}, N_B^{\text{obs}}, N_C^{\text{obs}}) \\ &= P_{\text{Poi}}(N_A^{\text{obs}} | N_A^{\text{exp}}) P_{\text{Poi}}(N_B^{\text{obs}} | N_B^{\text{exp}}) P_{\text{Poi}}(N_C^{\text{obs}} | N_C^{\text{exp}}). \end{aligned} \tag{27}$$

The best estimate of N_{BG} can be obtained by maximising Eq. (27) (listed in Table 2). However, we do not use this estimated N_{BG} in the inference of the signal but use $(N_A^{\text{obs}}, N_B^{\text{obs}}, N_C^{\text{obs}})$ as discussed in the following.

Our goal is to estimate the branching ratio of the MEx2G decay ($\mathcal{B}_{\text{MEx2G}}$). The likelihood function Eq. (27) is extended to include $\mathcal{B}_{\text{MEx2G}}$ as a parameter and the number of events in the signal region (N_S^{obs}) as an observable. In addition, to incorporate the uncertainty in the SES into the $\mathcal{B}_{\text{MEx2G}}$ estimation, the estimated SES (s_0) and the true value (s) are included into the likelihood function:

$$\mathcal{L}(\mathcal{B}_{\text{MEx2G}}, N_{BG}, s | N_S^{\text{obs}}, N_A^{\text{obs}}, N_B^{\text{obs}}, N_C^{\text{obs}}, s_0). \tag{28}$$

Using N_1, N_2, N_3 and a Gaussian PDF for the inverse of SES, it can be written as,

$$\begin{aligned} &\mathcal{L}(\mathcal{B}_{\text{MEx2G}}, N_1, N_2, N_3, s | N_S^{\text{obs}}, N_A^{\text{obs}}, N_B^{\text{obs}}, N_C^{\text{obs}}, s_0) \\ &= P_{\text{Poi}}(N_S^{\text{obs}} | N_S^{\text{exp}}) P_{\text{Poi}}(N_A^{\text{obs}} | N_A^{\text{exp}}) P_{\text{Poi}}(N_B^{\text{obs}} | N_B^{\text{exp}}) \\ &\quad \times P_{\text{Poi}}(N_C^{\text{obs}} | N_C^{\text{exp}}) P_{\text{Gaus}}(s_0^{-1} | s^{-1}), \end{aligned} \tag{29}$$

where $N_S^{\text{exp}} = N_1 + N_2 + N_3 + \mathcal{B}_{\text{MEx2G}}/s$ is the expected number of events in the signal region.

The best estimated values of the parameter set $\{\mathcal{B}_{\text{MEx2G}}, N_1, N_2, N_3, s\}$ are obtained by maximising Eq. (29). Among them, only $\mathcal{B}_{\text{MEx2G}}$ is the interesting parameter, while the others are regarded as nuisance parameters $\mathbf{v} = (N_1, N_2, N_3, s)$.

A frequentist test of the null (background-only) hypothesis is performed with the following profile likelihood ratio λ_p as the test statistic [3]:

$$\lambda_p(\mathcal{B}_{\text{MEx2G}}) = \frac{\mathcal{L}(\mathcal{B}_{\text{MEx2G}}, \hat{\mathbf{v}})}{\mathcal{L}(\hat{\mathcal{B}}_{\text{MEx2G}}, \hat{\mathbf{v}})}, \tag{30}$$

where $\hat{\mathcal{B}}_{\text{MEx2G}}$ and $\hat{\mathbf{v}}$ are the best-estimated values, and $\hat{\mathbf{v}}$ is the value of \mathbf{v} that maximises the likelihood at the fixed $\mathcal{B}_{\text{MEx2G}}$. The systematic uncertainties of the background estimation and the SES are incorporated into the test by profiling the likelihood about \mathbf{v} . The local⁹ significance is quantified by the p-value p_{local} , defined as the probability to find λ_p that is equally or less compatible with the null hypothesis than that observed with the data when the signal does not exist.

Since m_X is unknown, we need to take the look-elsewhere effect [3] into account to calculate the global significance. We estimate this effect following the approaches in [65,66], in which the trial factor of the search is estimated using an asymptotic property of λ_p , obeying the chi-square distribution. The smallest p_{local} in the m_X scan is converted into the global p-value p_{global} assuming that the signal can appear only at one m_X .

The range of $\mathcal{B}_{\text{MEx2G}}$ at 90% C.L. is constructed based on the Feldman–Cousins unified approach [67] extended to use the profile-likelihood ratio as the ordering statistic in order to incorporate the systematic uncertainties [68].

9 Results and discussion

Table 2 summarises the numbers of events in the signal region and the sidebands as well as the expected number of background events in the signal region. We observe non-zero events in the signal region for some masses. Note that the adjacent m_X bins are not statistically independent. Summing up the observed events gives nine events but five of them are unique events. One event appears in four bins ($m_X = 34, 35, 36, 37 \text{ MeV}/c^2$) and another event appears in two bins ($m_X = 35, 36 \text{ MeV}/c^2$).

We discuss the results for $\tau_X = 20 \text{ ps}$ below. The results for other τ_X are similar, with small changes in the efficiency. The results are presented in detail in Appendix A.

Figure 17 shows 90% confidence intervals on $\mathcal{B}_{\text{MEx2G}}$ obtained from this analysis together with the sensitivities and the previous upper limits due to Crystal Box. The sensitivity

⁹ Assuming that the signal is at the assumed m_X .

Table 2 The number of observed events in the sideband regions and the signal region and the expected number of background events in the signal region

m_X (MeV/c ²)	N_A^{obs}	N_B^{obs}	N_C^{obs}	N_{BG}	N_S^{obs}
20	0	0	1	$0.048^{+0.202}_{-0.046}$	1
21	0	0	3	$0.146^{+0.198}_{-0.084}$	0
22	1	0	5	$0.292^{+0.211}_{-0.140}$	0
23	3	0	3	$0.622^{+0.425}_{-0.330}$	0
24	2	0	1	$0.414^{+0.346}_{-0.260}$	1
25	2	0	3	$0.414^{+0.346}_{-0.261}$	0
26	0	0	3	$0.150^{+0.189}_{-0.091}$	0
27	0	0	1	$0.050^{+0.200}_{-0.049}$	0
28	0	0	1	$0.048^{+0.202}_{-0.046}$	0
29	0	0	1	$0.048^{+0.202}_{-0.046}$	1
30	0	0	0	$0.000^{+0.170}_{-0.000}$	0
31	0	0	1	$0.048^{+0.202}_{-0.046}$	0
32	0	0	0	$0.000^{+0.170}_{-0.000}$	0
33	0	0	0	$0.000^{+0.210}_{-0.000}$	0
34	0	0	0	$0.000^{+0.210}_{-0.000}$	1
35	0	0	0	$0.000^{+0.210}_{-0.000}$	2
36	0	0	0	$0.000^{+0.210}_{-0.000}$	2
37	1	0	0	$0.400^{+0.517}_{-0.301}$	1
38	0	0	2	$0.168^{+0.183}_{-0.105}$	0
39	0	0	1	$0.084^{+0.201}_{-0.084}$	0
40	0	0	0	$0.000^{+0.210}_{-0.000}$	0
41	0	0	0	$0.000^{+0.210}_{-0.000}$	0
42	0	0	0	$0.000^{+0.210}_{-0.000}$	0
43	0	0	1	$0.084^{+0.201}_{-0.084}$	0
44	0	0	0	$0.000^{+0.210}_{-0.000}$	0
45	0	0	0	$0.000^{+0.210}_{-0.000}$	0

ties are evaluated by the mean of the branching ratio limits at 90% C.L. under the null hypothesis. Note that since we adopt the Feldman–Cousins unified approach, a one-sided or two-sided interval is automatically determined according to the data. Therefore, lower limits can be set in m_X regions where non-zero events are observed with small N_{BG} .

The statistical significance of the excesses is tested against the null hypothesis. Figure 18 shows p_{local} versus m_X . We observe the lowest $p_{\text{local}} = 0.012$ at $m_X = 35$ MeV/c², which corresponds to 2.2σ significance. The global p-value is calculated to be $p_{\text{global}} \approx 0.10$ by taking the look-elsewhere effect into account. This corresponds to 1.3σ , that is not statistically significant.

Owing to the large statistics of the MEG dataset, the branching ratio upper limits have been reduced to the level of $\mathcal{O}(10^{-11})$. Our results improves the upper limits from the

Crystal Box experiment for $m_X < 40$ MeV/c², by a factor of 60 at most.

This publication reports results from the full MEG dataset. Hence, new experiments will be needed for further exploration of this decay, e.g. to test whether the small excess observed in this search grows. An upgraded experiment, MEG II, is currently being prepared [69]. A brief prospect for improved sensitivity to MEx2G in MEG II is discussed below. In this analysis the sensitivity worsens with increasing m_X , mainly due to the 2γ acceptance and direction match efficiencies. The acceptance is determined by the geometry of the LXe photon detector and is not changed by the upgrade. The direction match efficiency can even worsen if we only consider the $\mu^+ \rightarrow e^+\gamma$ search; the γ position resolution is expected to improve by a factor two, which enables tightening the direction match trigger condition. However, the MEG II trigger development is underway and the trigger efficiency

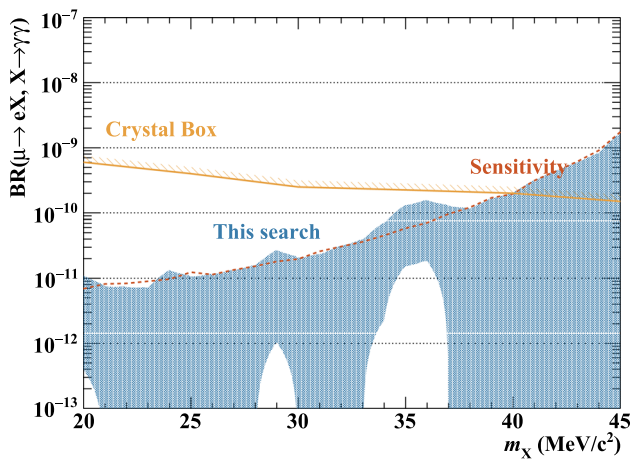


Fig. 17 Confidence intervals (90% C.L.) on $\mathcal{B}_{\text{MEG2G}}$ (blue band) for $\tau_X = 20$ ps. The red broken line shows the expected upper limits under the null hypothesis and the yellow line shows the limits extracted by Crystal Box analysis

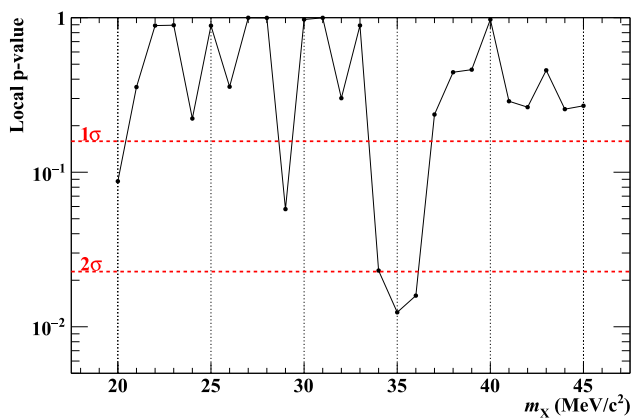


Fig. 18 Local p-value under null hypothesis as a function of assumed m_X

for high mass can be improved up to a factor ~ 2 if a dedicated trigger is prepared. Basically, MEG II will collect ten times more μ^+ decays and the resolutions of each kinematic variable will improve by roughly a factor two, leading to higher efficiency while maintaining low background. It is therefore possible to improve the sensitivity by one order of magnitude.

10 Conclusions

We have searched for a lepton-flavour-violating muon decay mediated by a new light particle, $\mu^+ \rightarrow e^+X, X \rightarrow \gamma\gamma$ decay, for the first time using the full dataset (2009–2013) of the MEG experiment. No significant excess was found in the mass range $m_X = 20\text{--}45$ MeV/ c^2 and $\tau_X < 40$ ps, and we set new branching ratio upper limits in the mass range $m_X = 20\text{--}40$ MeV/ c^2 . In particular, the upper limits are lowered to the level of $\mathcal{O}(10^{-11})$ for $m_X = 20\text{--}30$ MeV/ c^2 . The result is up to 60 times more stringent than the bound converted from the previous experiment, Crystal Box.

Acknowledgements We are grateful for the support and co-operation provided by PSI as the host laboratory and to the technical and engineering staff of our institutes. This work is supported by DOE DEFG02-91ER40679 (USA); INFN (Italy); MIUR Montalchini D.M. 2014 n. 975 (Italy); JSPS KAKENHI numbers JP22000004, JP26000004, JP17J04114, and JSPS Core-to-Core Program, A. Advanced Research Networks JPJSCCA20180004 (Japan); Schweizerischer Nationalfonds (SNF) Grant 200021_137738 and Grant 200020_172706; the Russian Federation Ministry of Education and Science, and Russian Fund for Basic Research grant RFBR-14-22-03071.

Data Availability Statement This manuscript has no associated data or the data will not be deposited. [Authors’ comment: The data used in this study can be provided by the authors upon reasonable request.]

Open Access This article is licensed under a Creative Commons Attribution 4.0 International License, which permits use, sharing, adaptation, distribution and reproduction in any medium or format, as long as you give appropriate credit to the original author(s) and the source, provide a link to the Creative Commons licence, and indicate if changes were made. The images or other third party material in this article are included in the article’s Creative Commons licence, unless indicated otherwise in a credit line to the material. If material is not included in the article’s Creative Commons licence and your intended use is not permitted by statutory regulation or exceeds the permitted use, you will need to obtain permission directly from the copyright holder. To view a copy of this licence, visit <http://creativecommons.org/licenses/by/4.0/>.
Funded by SCOAP³.

Appendix A: Detailed results for different lifetimes

The detailed results for different lifetimes τ_X are summarised in Tables 3, 4, 5.

Table 3 Results for $\tau_X = 5$ ps. LL and UL denote the lower limit and upper limit of the 90% confidence interval

m_X (MeV/c ²)	s_0	LL	UL
20	$(3.29 \pm 0.31) \times 10^{-12}$	4.60×10^{-13}	1.28×10^{-11}
21	$(3.56 \pm 0.44) \times 10^{-12}$	–	7.78×10^{-12}
22	$(3.73 \pm 0.44) \times 10^{-12}$	–	8.30×10^{-12}
23	$(3.96 \pm 0.45) \times 10^{-12}$	–	7.72×10^{-12}
24	$(4.26 \pm 0.49) \times 10^{-12}$	–	1.43×10^{-11}
25	$(5.41 \pm 0.55) \times 10^{-12}$	–	1.08×10^{-11}
26	$(5.16 \pm 0.61) \times 10^{-12}$	–	1.13×10^{-11}
27	$(5.81 \pm 0.70) \times 10^{-12}$	–	1.39×10^{-11}
28	$(6.62 \pm 0.81) \times 10^{-12}$	–	1.58×10^{-11}
29	$(7.67 \pm 0.95) \times 10^{-12}$	8.53×10^{-13}	2.93×10^{-11}
30	$(8.62 \pm 0.85) \times 10^{-12}$	–	2.26×10^{-11}
31	$(1.07 \pm 0.14) \times 10^{-11}$	–	2.54×10^{-11}
32	$(1.29 \pm 0.17) \times 10^{-11}$	–	3.20×10^{-11}
33	$(1.59 \pm 0.21) \times 10^{-11}$	–	4.00×10^{-11}
34	$(1.97 \pm 0.26) \times 10^{-11}$	1.97×10^{-12}	7.66×10^{-11}
35	$(2.60 \pm 0.31) \times 10^{-11}$	1.65×10^{-11}	1.40×10^{-10}
36	$(3.18 \pm 0.42) \times 10^{-11}$	1.98×10^{-11}	1.72×10^{-10}
37	$(4.12 \pm 0.53) \times 10^{-11}$	–	1.43×10^{-10}
38	$(5.43 \pm 0.70) \times 10^{-11}$	–	1.27×10^{-10}
39	$(7.25 \pm 0.93) \times 10^{-11}$	–	1.79×10^{-10}
40	$(9.01 \pm 0.93) \times 10^{-11}$	–	2.20×10^{-10}
41	$(1.35 \pm 0.19) \times 10^{-10}$	–	3.37×10^{-10}
42	$(1.88 \pm 0.27) \times 10^{-10}$	–	4.72×10^{-10}
43	$(2.66 \pm 0.39) \times 10^{-10}$	–	6.47×10^{-10}
44	$(3.81 \pm 0.57) \times 10^{-10}$	–	1.01×10^{-9}
45	$(6.25 \pm 0.88) \times 10^{-10}$	–	1.59×10^{-9}

Table 4 Results for $\tau_X = 20$ ps. LL and UL denote the lower limit and upper limit of the 90% confidence interval

m_X (MeV/c ²)	s_0	LL	UL
20	$(2.92 \pm 0.28) \times 10^{-12}$	3.94×10^{-13}	1.10×10^{-11}
21	$(3.18 \pm 0.39) \times 10^{-12}$	–	7.54×10^{-12}
22	$(3.35 \pm 0.39) \times 10^{-12}$	–	7.36×10^{-12}
23	$(3.57 \pm 0.40) \times 10^{-12}$	–	7.14×10^{-12}
24	$(3.86 \pm 0.43) \times 10^{-12}$	–	1.33×10^{-11}
25	$(4.74 \pm 0.43) \times 10^{-12}$	–	1.06×10^{-11}
26	$(4.71 \pm 0.53) \times 10^{-12}$	–	1.15×10^{-11}
27	$(5.31 \pm 0.62) \times 10^{-12}$	–	1.33×10^{-11}
28	$(6.07 \pm 0.72) \times 10^{-12}$	–	1.58×10^{-11}
29	$(7.04 \pm 0.85) \times 10^{-12}$	1.04×10^{-12}	2.70×10^{-11}
30	$(7.94 \pm 0.78) \times 10^{-12}$	–	2.07×10^{-11}
31	$(9.86 \pm 1.26) \times 10^{-12}$	–	2.33×10^{-11}
32	$(1.19 \pm 0.15) \times 10^{-11}$	–	3.14×10^{-11}
33	$(1.46 \pm 0.19) \times 10^{-11}$	–	3.92×10^{-11}

Table 4 continued

m_X (MeV/c ²)	s_0	LL	UL
34	$(1.82 \pm 0.23) \times 10^{-11}$	2.25×10^{-12}	7.10×10^{-11}
35	$(2.38 \pm 0.25) \times 10^{-11}$	1.53×10^{-11}	1.31×10^{-10}
36	$(2.93 \pm 0.37) \times 10^{-11}$	1.85×10^{-11}	1.56×10^{-10}
37	$(3.79 \pm 0.47) \times 10^{-11}$	–	1.29×10^{-10}
38	$(4.99 \pm 0.62) \times 10^{-11}$	–	1.16×10^{-10}
39	$(6.65 \pm 0.83) \times 10^{-11}$	–	1.66×10^{-10}
40	$(8.20 \pm 0.87) \times 10^{-11}$	–	2.04×10^{-10}
41	$(1.23 \pm 0.20) \times 10^{-10}$	–	3.15×10^{-10}
42	$(1.71 \pm 0.28) \times 10^{-10}$	–	4.44×10^{-10}
43	$(2.41 \pm 0.41) \times 10^{-10}$	–	5.98×10^{-10}
44	$(3.44 \pm 0.61) \times 10^{-10}$	–	8.25×10^{-10}
45	$(6.29 \pm 1.12) \times 10^{-10}$	–	1.63×10^{-9}

Table 5 Results for $\tau_X = 40$ ps. LL and UL denote the lower limit and upper limit of the 90% confidence interval

m_X (MeV/c ²)	s_0	LL	UL
20	$(3.02 \pm 0.29) \times 10^{-12}$	3.78×10^{-13}	1.19×10^{-11}
21	$(3.28 \pm 0.39) \times 10^{-12}$	–	7.44×10^{-12}
22	$(3.44 \pm 0.39) \times 10^{-12}$	–	7.80×10^{-12}
23	$(3.66 \pm 0.40) \times 10^{-12}$	–	7.41×10^{-12}
24	$(3.94 \pm 0.43) \times 10^{-12}$	–	1.43×10^{-11}
25	$(4.83 \pm 0.43) \times 10^{-12}$	–	1.04×10^{-11}
26	$(4.76 \pm 0.54) \times 10^{-12}$	–	1.09×10^{-11}
27	$(5.35 \pm 0.61) \times 10^{-12}$	–	1.33×10^{-11}
28	$(6.09 \pm 0.71) \times 10^{-12}$	–	1.51×10^{-11}
29	$(7.03 \pm 0.83) \times 10^{-12}$	9.22×10^{-13}	2.71×10^{-11}
30	$(7.87 \pm 0.78) \times 10^{-12}$	–	1.88×10^{-11}
31	$(9.78 \pm 1.21) \times 10^{-12}$	–	2.33×10^{-11}
32	$(1.18 \pm 0.15) \times 10^{-11}$	–	2.92×10^{-11}
33	$(1.44 \pm 0.18) \times 10^{-11}$	–	3.57×10^{-11}
34	$(1.78 \pm 0.22) \times 10^{-11}$	1.97×10^{-12}	6.81×10^{-11}
35	$(2.30 \pm 0.23) \times 10^{-11}$	1.47×10^{-11}	1.26×10^{-10}
36	$(2.84 \pm 0.34) \times 10^{-11}$	1.78×10^{-11}	1.54×10^{-10}
37	$(3.67 \pm 0.43) \times 10^{-11}$	–	1.28×10^{-10}
38	$(4.80 \pm 0.56) \times 10^{-11}$	–	1.12×10^{-10}
39	$(6.37 \pm 0.75) \times 10^{-11}$	–	1.51×10^{-10}
40	$(7.94 \pm 0.78) \times 10^{-11}$	–	1.90×10^{-10}
41	$(1.17 \pm 0.18) \times 10^{-10}$	–	2.84×10^{-10}
42	$(1.62 \pm 0.25) \times 10^{-10}$	–	4.28×10^{-10}
43	$(2.27 \pm 0.37) \times 10^{-10}$	–	5.94×10^{-10}
44	$(3.23 \pm 0.54) \times 10^{-10}$	–	8.31×10^{-10}
45	$(5.65 \pm 0.97) \times 10^{-10}$	–	1.53×10^{-9}

References

1. Y. Fukuda et al. (Super-Kamiokande Collaboration), Evidence for oscillation of atmospheric neutrinos. *Phys. Rev. Lett.* **81**(8), 1562 (1998). <https://doi.org/10.1103/PhysRevLett.81.1562>, [arXiv:9807003](https://arxiv.org/abs/9807003)
2. Q.R. Ahmad et al., (SNO Collaboration), Direct evidence for neutrino flavor transformation from neutral-current interactions in the Sudbury Neutrino Observatory. *Phys. Rev. Lett.* **89**(1), 011301 (2002). <https://doi.org/10.1103/PhysRevLett.89.011301>, [arXiv:nucl-ex/0204008](https://arxiv.org/abs/nucl-ex/0204008)
3. M. Tanabashi et al. (Particle Data Group), Review of Particle Physics. *Phys. Rev. D* **98**, 3 (2018). <https://doi.org/10.1103/PhysRevD.98.030001>
4. S.T. Petcov, The processes $\mu^+ \rightarrow e^+\gamma$, $\mu^+ \rightarrow 3e$, $\nu' \rightarrow \nu + \gamma$ in the Weinberg-Salam model with neutrino mixing. *Sov. J. Nucl. Phys.* **25**, 340 (1977). (Erratum *ibid.* **25**, 698 (1977))
5. T.P. Cheng, L.-F. Li, $\mu^+ \rightarrow e^+\gamma$ in theories with Dirac and Majorana neutrino-mass terms. *Phys. Rev. Lett.* **45**(24), 1908–1911 (1980). <https://doi.org/10.1103/PhysRevLett.45.1908>
6. R. Barbieri, L.J. Hall, Signals for supersymmetric unification. *Phys. Lett. B* **338**(2–3), 212–218 (1994). [https://doi.org/10.1016/0370-2693\(94\)91368-4](https://doi.org/10.1016/0370-2693(94)91368-4), [arXiv:hep-ph/9408406](https://arxiv.org/abs/hep-ph/9408406)
7. T. Mori, W. Ootani, Flavour violating muon decays. *Prog. Part. Nucl. Phys.* **79**, 57–94 (2014). <https://doi.org/10.1016/j.pnpnp.2014.09.001>
8. L. Calibbi, G. Signorelli, Charged lepton flavour violation: an experimental and theoretical introduction. *Riv. Nuovo Cim.* **41**(2), 71–174 (2018). <https://doi.org/10.1393/ncr/i2018-10144-0>
9. A.M. Baldini et al., (MEG Collaboration), Search for the lepton flavour violating decay $\mu^+ \rightarrow e^+\gamma$ with the full dataset of the MEG experiment. *Eur. Phys. J. C* **76**(8), 434 (2016). <https://doi.org/10.1140/epjc/s10052-016-4271-x>
10. R.D. Peccei, H.R. Quinn, CP conservation in the presence of pseudoparticles. *Phys. Rev. Lett.* **38**(25), 1440–1443 (1977). <https://doi.org/10.1103/PhysRevLett.38.1440>
11. S. Weinberg, A new light boson? *Phys. Rev. Lett.* **40**(4), 223–226 (1978). <https://doi.org/10.1103/PhysRevLett.40.223>
12. F. Wilczek, Problem of strong P and T invariance in the presence of instantons. *Phys. Rev. Lett.* **40**(5), 279–282 (1978). <https://doi.org/10.1103/PhysRevLett.40.279>
13. C. Cornella, P. Paradisi, O. Sumensari, Hunting for ALPs with lepton flavor violation. *J. High Energy Phys.* **2020**, 158 (2020). [arXiv:1911.06279v1](https://arxiv.org/abs/1911.06279v1)
14. Y. Chikashige, R.N. Mohapatra, R.D. Peccei, Are there real goldstone bosons associated with broken lepton number? *Phys. Lett. B* **98**(4), 265–268 (1981). [https://doi.org/10.1016/0370-2693\(81\)90011-3](https://doi.org/10.1016/0370-2693(81)90011-3)
15. G.B. Gelmini, M. Roncadelli, Left-handed neutrino mass scale and spontaneously broken lepton number. *Phys. Lett. B* **99**(5), 411–415 (1981). [https://doi.org/10.1016/0370-2693\(81\)90559-1](https://doi.org/10.1016/0370-2693(81)90559-1)
16. D.B. Reiss, Can the family group be a global symmetry? *Phys. Lett. B* **115**(3), 217–220 (1982). [https://doi.org/10.1016/0370-2693\(82\)90647-5](https://doi.org/10.1016/0370-2693(82)90647-5)
17. F. Wilczek, Axions and family symmetry breaking. *Phys. Rev. Lett.* **49**(21), 1549–1552 (1982). <https://doi.org/10.1103/PhysRevLett.49.1549>
18. Z. Berezhiani, M. Khlopov, Physical and astrophysical consequences of breaking of the symmetry of families (In Russian). *Sov. J. Nucl. Phys.* **51**, 1479–1491 (1990)
19. J. Jaeckel, A family of WISPy dark matter candidates. *Phys. Lett. B* **732**, 1–7 (2014). <https://doi.org/10.1016/j.physletb.2014.03.005>, [arXiv:1311.0880](https://arxiv.org/abs/1311.0880)
20. K. Tsumura, L. Velasco-Sevilla, Phenomenology of flavon fields at the LHC. *Phys. Rev. D* **81**, 3 (2010). <https://doi.org/10.1103/PhysRevD.81.036012>
21. M. Bauer, T. Schell, T. Plehn, Hunting the flavon. *Phys. Rev. D* **94**, 5 (2016). <https://doi.org/10.1103/PhysRevD.94.056003>, [arXiv:1603.06950](https://arxiv.org/abs/1603.06950)
22. Y. Ema et al., Flaxion: a minimal extension to solve puzzles in the standard model. *J. High Energy Phys.* **2017**, 1 (2017). [https://doi.org/10.1007/JHEP01\(2017\)096](https://doi.org/10.1007/JHEP01(2017)096), [arXiv:1612.05492](https://arxiv.org/abs/1612.05492)
23. L. Calibbi et al., Minimal axion model from flavor. *Phys. Rev. D* **95**(9), 095009 (2017). <https://doi.org/10.1103/PhysRevD.95.095009>
24. O. Davidi et al., The hierarchion, a relaxion addressing the Standard Model's hierarchies. *J. High Energy Phys.* **2018**, 8 (2018). [https://doi.org/10.1007/JHEP08\(2018\)153](https://doi.org/10.1007/JHEP08(2018)153), [arXiv:1806.08791](https://arxiv.org/abs/1806.08791)
25. Y. Hochberg et al., Mechanism for thermal relic dark matter of strongly interacting massive particles. *Phys. Rev. Lett.* **113**, 17 (2014). <https://doi.org/10.1103/PhysRevLett.113.171301>
26. Y. Hochberg et al., Model for thermal relic dark matter of strongly interacting massive particles. *Phys. Rev. Lett.* **115**, 2 (2015). <https://doi.org/10.1103/PhysRevLett.115.021301>
27. R. Bayes et al., Search for two body muon decay signals. *Phys. Rev. D* **91**, 5 (2015). <https://doi.org/10.1103/PhysRevD.91.052020>, [arXiv:1409.0638](https://arxiv.org/abs/1409.0638)
28. R. Eichler et al., Limits for short-lived neutral particles emitted in μ^+ or π^+ decay. *Phys. Lett. B* **175**(1), 101–104 (1986). [https://doi.org/10.1016/0370-2693\(86\)90339-4](https://doi.org/10.1016/0370-2693(86)90339-4)
29. D.L. Anderson, C.D. Carone, M. Sher, Probing the light pseudoscalar window. *Phys. Rev. D* **67**, 11 (2003). <https://doi.org/10.1103/PhysRevD.67.115013>
30. Y.S. Liu, D. McKeen, G.A. Miller, Electrophobic scalar boson and muonic puzzles. *Phys. Rev. Lett.* **117**, 10 (2016). <https://doi.org/10.1103/PhysRevLett.117.101801>, [arXiv:1605.04612](https://arxiv.org/abs/1605.04612)
31. R.D. Bolton et al., Search for rare muon decays with the Crystal Box detector. *Phys. Rev. D* **38**(7), 2077–2101 (1988). <https://doi.org/10.1103/PhysRevD.38.2077>
32. H. Natori, Search for a lepton flavor violating muon decay mediated by a new light neutral particle with the MEG detector. PhD thesis, The University of Tokyo (2012). http://meg.web.psi.ch/docs/theses/natori_phd.pdf
33. J. Heeck, W. Rodejohann, Lepton flavor violation with displaced vertices. *Phys. Lett. B* **776**, 385–390 (2018). <https://doi.org/10.1016/J.PHYSLETB.2017.11.067>
34. M.J. Dolan et al., Revised constraints and Belle II sensitivity for visible and invisible axion-like particles. *J. High Energy Phys.* **2017**, 12 (2017). [https://doi.org/10.1007/JHEP12\(2017\)094](https://doi.org/10.1007/JHEP12(2017)094), [arXiv:1709.00009](https://arxiv.org/abs/1709.00009)
35. B. Döbrich et al., ALPtraum: ALP production in proton beam dump experiments. *J. High Energy Phys.* **2016**(2), 1–27 (2016). [https://doi.org/10.1007/JHEP02\(2016\)018](https://doi.org/10.1007/JHEP02(2016)018), [arXiv:1512.03069](https://arxiv.org/abs/1512.03069)
36. J. Jaeckel, M. Spannowsky, Probing MeV to 90 GeV axion-like particles with LEP and LHC. *Phys. Lett. B* **753**, 482–487 (2016). <https://doi.org/10.1016/j.physletb.2015.12.037>
37. J. Adam et al., The MEG detector for $\mu^+ \rightarrow e^+\gamma$ decay search. *Eur. Phys. J. C* **73**, 2365 (2013). <https://doi.org/10.1140/epjc/s10052-013-2365-2>, [arXiv:1303.2348](https://arxiv.org/abs/1303.2348)
38. A. M. Baldini et al. (MEG Collaboration), Muon polarization in the MEG experiment: predictions and measurements. *Eur. Phys. J. C* **76**(4), 223 (2016). <https://doi.org/10.1140/epjc/s10052-016-4047-3>, [arXiv:1510.04743](https://arxiv.org/abs/1510.04743) [hep-ex]
39. W. Ootani et al., Development of a thin-wall superconducting magnet for the positron spectrometer in the MEG experiment. *IEEE Trans. Appl. Superconduct.* **14**(2), 568–571 (2004). <https://doi.org/10.1109/TASC.2004.829721>

40. M. Hildebrandt, The drift chamber system of the MEG experiment. *Nucl. Instrum. Methods A* **623**(1), 111–113 (2010). <https://doi.org/10.1016/j.nima.2010.02.165>
41. M. De Gerone et al., The MEG timing counter calibration and performance. *Nucl. Instrum. Methods A* **638**(1), 41–46 (2011). <https://doi.org/10.1016/j.nima.2011.02.044>
42. M. De Gerone et al., Development and commissioning of the timing counter for the MEG experiment. *IEEE Trans. Nucl. Sci.* **59**(2), 379–388 (2012). <https://doi.org/10.1109/TNS.2012.2187311>
43. R. Sawada, Performance of liquid xenon gamma ray detector for MEG. *Nucl. Instrum. Methods A* **623**(1), 258–260 (2010). <https://doi.org/10.1016/j.nima.2010.02.214>
44. A. Baldini et al., Absorption of scintillation light in a 100 l liquid xenon γ -ray detector and expected detector performance. *Nucl. Instrum. Methods A* **545**(3), 753–764 (2005). <https://doi.org/10.1016/j.nima.2005.02.029>. [arXiv:0407033](https://arxiv.org/abs/0407033)
45. S. Ritt, R. Dinapoli, U. Hartmann, Application of the DRS chip for fast waveform digitizing. *Nucl. Instrum. Methods A* **623**(1), 486–488 (2010). <https://doi.org/10.1016/j.nima.2010.03.045>
46. L. Galli et al., An FPGA-based trigger system for the search of $\mu^+ \rightarrow e^+ \gamma$ decay in the MEG experiment. *J. Instrum.* **8**, P01008 (2013). <https://doi.org/10.1088/1748-0221/8/01/P01008>
47. L. Galli et al., Operation and performance of the trigger system of the MEG experiment. *J. Instrum.* **9**, P04022 (2014). <https://doi.org/10.1088/1748-0221/9/04/P04022>
48. J. Adam et al., (MEG Collaboration), Calibration and monitoring of the MEG experiment by a proton beam from a Cockcroft-Walton accelerator. *Nucl. Instrum. Methods A* **641**, 19–32 (2011). <https://doi.org/10.1016/j.nima.2011.03.048>
49. A. Papa, The CW accelerator and the MEG monitoring and calibration methods. *Nuovo Cim. B* **122**(6), 627–640 (2007). <https://doi.org/10.1393/ncb/i2008-10401-6>
50. G. Pruna, A. Signer, Y. Ulrich, Fully differential NLO predictions for the radiative decay of muons and taus. *Phys. Lett. B* **772**, 452–458 (2017). <https://doi.org/10.1016/j.physletb.2017.07.008>. [arXiv:1705.03782](https://arxiv.org/abs/1705.03782)
51. P. Banerjee et al., QED at NNLO with McMule (2020). [arXiv:2007.01654](https://arxiv.org/abs/2007.01654)
52. A.M. Baldini et al., (MEG Collaboration), Measurement of the radiative decay of polarized muons in the MEG experiment. *Eur. Phys. J. C* **76**, 108 (2016). <https://doi.org/10.1140/epjc/s10052-016-3947-6>, [arXiv:1312.3217](https://arxiv.org/abs/1312.3217)
53. P.W. Cattaneo et al., The architecture of MEG simulation and analysis software. *Eur. Phys. J. Plus* **126**(7), 1–12 (2011). <https://doi.org/10.1140/epjp/i2011-11060-6>
54. CERN CN division, GEANT: Detector description and simulation tool. CERN program Library Long Writeups W5013 (1993). <https://cds.cern.ch/record/1073159/files/cer-002728534.pdf>
55. J. Adam et al., The MEG detector for $\mu^+ \rightarrow e^+ \gamma$ decay search. *Eur. Phys. J. C* **73**(4), 2365 (2013). <https://doi.org/10.1140/epjc/s10052-013-2365-2>
56. P. Billoir, Track fitting with multiple scattering: A new method. *Nucl. Instrum. Methods A* **225**(2), 352–366 (1984). [https://doi.org/10.1016/0167-5087\(84\)90274-6](https://doi.org/10.1016/0167-5087(84)90274-6)
57. R. Frühwirth, Application of Kalman filtering to track and vertex fitting. *Nucl. Instrum. Methods A* **262**(2–3), 444–450 (1987). [https://doi.org/10.1016/0168-9002\(87\)90887-4](https://doi.org/10.1016/0168-9002(87)90887-4)
58. A. Fontana et al., Use of GEANE for tracking in virtual Monte Carlo. *J. Phys. Conf. Ser.* **119**, 032018 (2008). <https://doi.org/10.1088/1742-6596/119/3/032018>
59. M. Morhac, ROOT: TSpectrum2 Class Reference (2019). <https://root.cern.ch/doc/master/classTSpectrum2.html>
60. M. Morhac et al., Identification of peaks in multidimensional coincidence γ -ray spectra. *Nucl. Instrum. Methods A* **443**(1), 108–125 (2000). [https://doi.org/10.1016/S0168-9002\(99\)01005-0](https://doi.org/10.1016/S0168-9002(99)01005-0)
61. F. James, M. Roos, MINUIT – a system for function minimization and analysis of the parameter errors and correlations. *Comput. Phys. Commun.* **10**, 343–367 (1975). [https://doi.org/10.1016/0010-4655\(75\)90039-9](https://doi.org/10.1016/0010-4655(75)90039-9)
62. A. Read, Linear interpolation of histograms. *Nucl. Instrum. Methods A* **425**(1–2), 357–360 (1999). [https://doi.org/10.1016/S0168-9002\(98\)01347-3](https://doi.org/10.1016/S0168-9002(98)01347-3)
63. G. Punzi, Sensitivity of searches for new signals and its optimization. *eConf C030908*, MODT002 (2003). [arXiv:physics/0308063](https://arxiv.org/abs/physics/0308063)
64. K. Cranmer, Kernel estimation in high-energy physics. *Comput. Phys. Commun.* **136**(3), 198–207 (2001). [https://doi.org/10.1016/S0010-4655\(00\)00243-5](https://doi.org/10.1016/S0010-4655(00)00243-5). [arXiv:0011057](https://arxiv.org/abs/0011057)
65. E. Gross, O. Vitells, Trial factors for the look elsewhere effect in high energy physics. *Eur. Phys. J. C* **70**(1), 525–530 (2010). <https://doi.org/10.1140/epjc/s10052-010-1470-8>. [arXiv:1005.1891](https://arxiv.org/abs/1005.1891)
66. R.B. Davies, Hypothesis testing when a nuisance parameter is present only under the alternatives. *Biometrika* **74**(1), 33 (1987). <https://doi.org/10.2307/2336019>
67. G.J. Feldman, R.D. Cousins, Unified approach to the classical statistical analysis of small signals. *Phys. Rev. D* **57**(7), 3873–3889 (1998). <https://doi.org/10.1103/PhysRevD.57.3873>. [arXiv:97111021](https://arxiv.org/abs/97111021)
68. K. Cranmer, Statistical challenges for searches for new physics at the LHC. in *Proceedings of Statistical Problems in Particle Physics, Astrophysics and Cosmology (PHYSTAT 05)*, Oxford, UK, pp. 112–123 (2005). [arXiv:physics/0511028](https://arxiv.org/abs/physics/0511028)
69. A. M. Baldini et al. (MEG II Collaboration), The design of the MEG II experiment. *Eur. Phys. J. C* **78**, 5 (2018). <https://doi.org/10.1140/epjc/s10052-018-5845-6>