

# Unpacking the BUILD treasure box at NADDEC

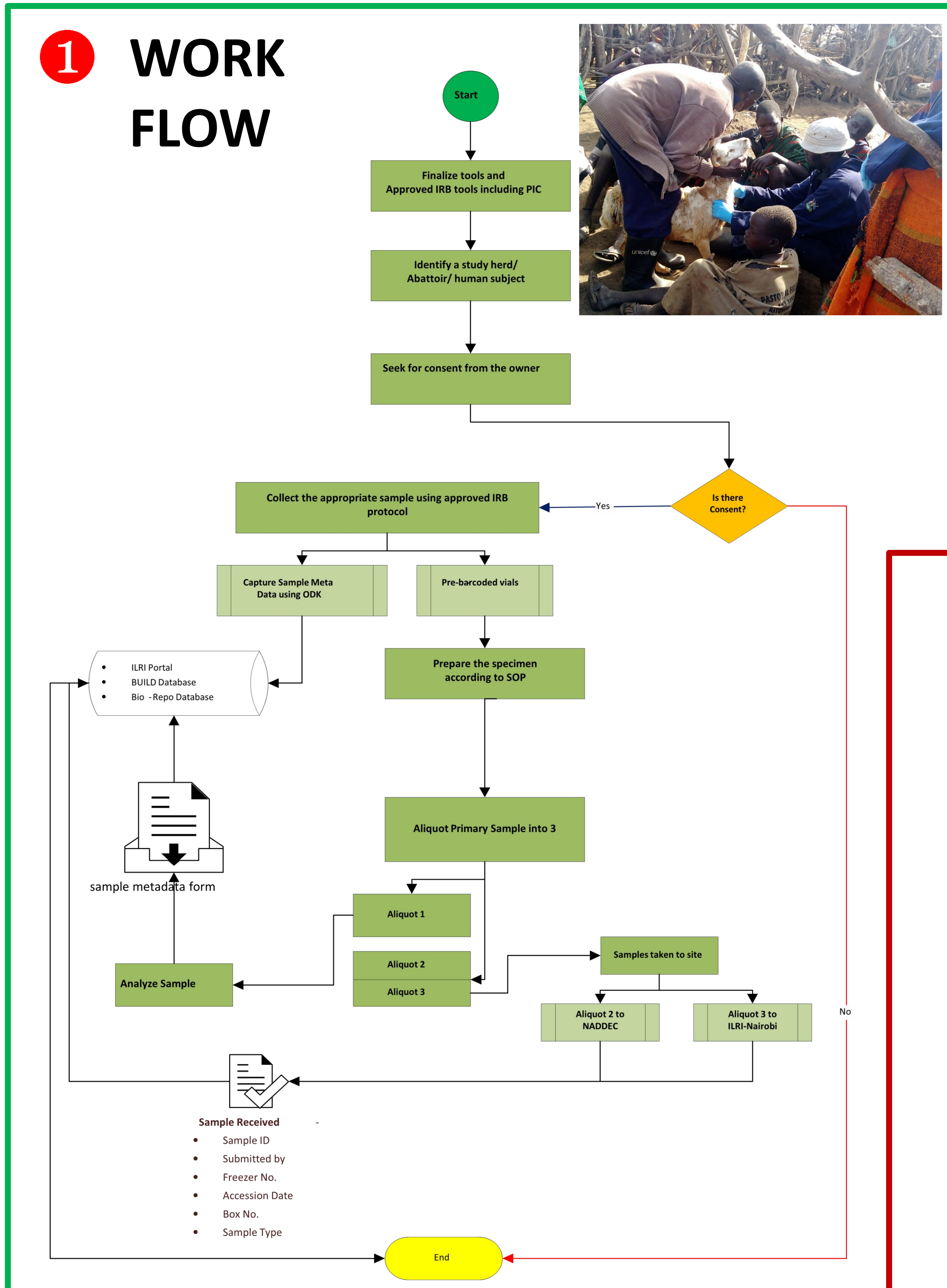


Denis Mugizi<sup>1</sup>, Innocent Obilil<sup>1</sup>, Paul Lumu<sup>2</sup>, Dan Tumusiime<sup>1,2</sup>, Joseph Nkamwesiga<sup>1</sup>, Alex Mabirizi<sup>1</sup>, Kristina Roesel<sup>1</sup>

22 September 2022

<sup>1</sup> International Livestock Research Institute, Kampala, Uganda

<sup>2</sup> National Animal Disease Diagnostics and Epidemiology Centre (NADDEC), Uganda



### 2 SAMPLE METADATA



- Location
- Breed
- Age
- Sex
- Vaccination status
- Clinical status
- Sample type

### 4 HARDWARE

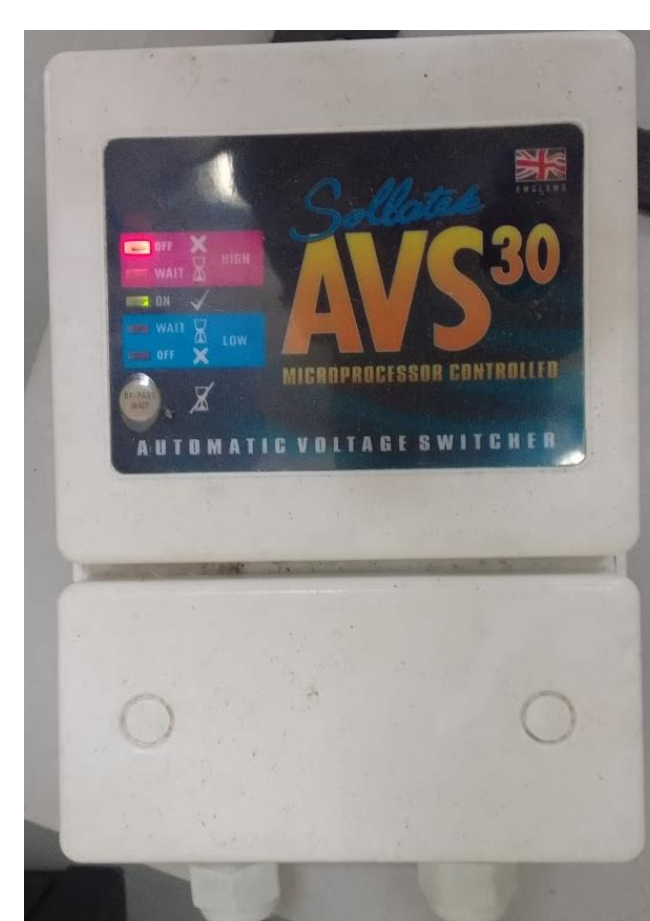
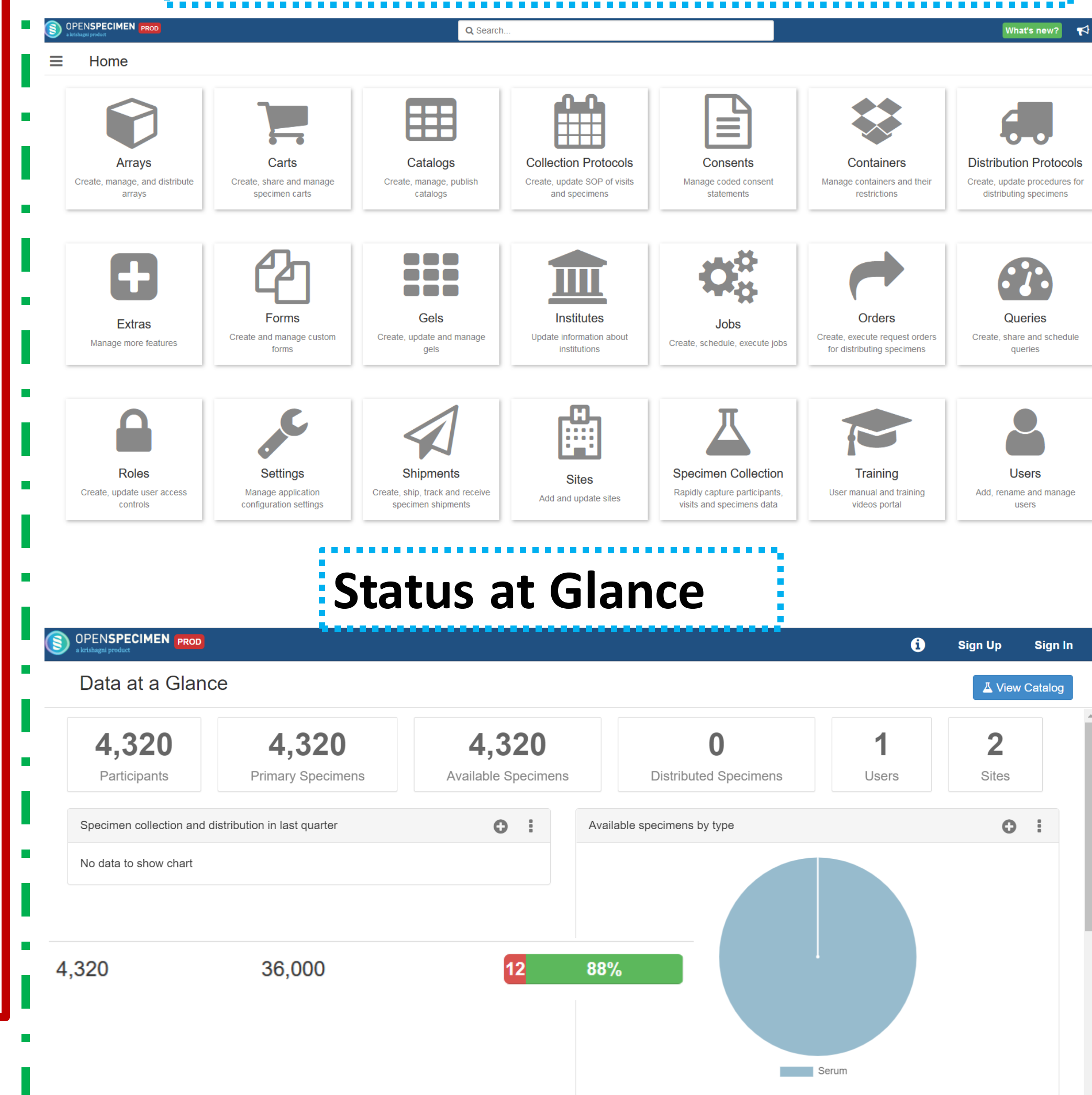
- 2 Freezers -80 °C
- 1 freezers -20 °C
- 1 fridge 4 °C to keep consumables and reagents
- Desktop computer & Barcode Scanner
- Lab jacks
- Fridge guards 4x
- 2 power stabilizers for freezers the -80 °C
- Repairs of automated generator + fuel
- Vials and cryo-boxes
- Freezer racks
- Door and burglar bars

**EUR 200,000**



### 3 BIO-BANKING SOFTWARE

- Open Specimen
- Hosted on ILRI Cloud infrastructure
- Production Server (<https://openspecimen.ilri.org>)
- Test Server (<https://test.openspecimen.ilri.org>)
- Annual Support



### WAY FORWARD

- Capacity building of NADDEC to generate summary reports for the DAR and CAH (and the graduate fellows for their theses, scientists for their reports)
- Secure maintenance of the repository: monthly upkeep = generator fuel, servicing, OpenSpecimen
- Interested in accessing the samples and/or data? Contact the BUILD project management committee [k.roesel@cgiar.org](mailto:k.roesel@cgiar.org)
- Interested in learning more about the repository? Leave your contact information!

Corresponding author: Kristina Roesel  
k.roesel@cgiar.org  
ILRI c/o Bioversity International  
P.O. Box 24384, Kampala Uganda  
+256 392 081 154/155



This document is licensed for use under the Creative Commons Attribution 4.0 International Licence. September 2022.

ILRI thanks all donors and organizations which globally support its work through their contributions to the CGIAR Trust Fund.