

7-1-2022

**Association between ambient air pollution and hospital admissions, length of hospital stay and hospital cost for patients with cardiovascular diseases and comorbid diabetes mellitus: Base on 1,969,755 cases in Beijing, China, 2014–2019**

Zhiwei Li

Mengyang Liu

Zhiyuan Wu

Yue Liu

Weiming Li

*See next page for additional authors*

Follow this and additional works at: <https://ro.ecu.edu.au/ecuworks2022-2026>



Part of the [Public Health Commons](#)

---

[10.1016/j.envint.2022.107301](https://doi.org/10.1016/j.envint.2022.107301)

Li, Z., Liu, M., Wu, Z., Liu, Y., Li, W., Liu, M., ... & Liu, X. (2022). Association between ambient air pollution and hospital admissions, length of hospital stay and hospital cost for patients with cardiovascular diseases and comorbid diabetes mellitus: Base on 1,969,755 cases in Beijing, China, 2014-2019. *Environment International*, 165, 107301. <https://doi.org/10.1016/j.envint.2022.107301>

This Journal Article is posted at Research Online.

<https://ro.ecu.edu.au/ecuworks2022-2026/916>

---

**Authors**

Zhiwei Li, Mengyang Liu, Zhiyuan Wu, Yue Liu, Weiming Li, Mengmeng Liu, Shiyun Lv, Siqi Yu, Yanshuang Jiang, Bo Gao, Xiaonan Wang, Xia Li, Wei Wang, Hualiang Lin, Xiuhua Guo, and Xiangtong Liu



Full length article



## Association between ambient air pollution and hospital admissions, length of hospital stay and hospital cost for patients with cardiovascular diseases and comorbid diabetes mellitus: Base on 1,969,755 cases in Beijing, China, 2014–2019

Zhiwei Li<sup>a,b</sup>, Mengyang Liu<sup>a,b,g</sup>, Zhiyuan Wu<sup>a,b</sup>, Yue Liu<sup>a,b</sup>, Weiming Li<sup>a,b</sup>, Mengmeng Liu<sup>a,b</sup>, Shiyun Lv<sup>a,b</sup>, Siqi Yu<sup>a,b</sup>, Yanshuang Jiang<sup>a</sup>, Bo Gao<sup>a,b</sup>, Xiaonan Wang<sup>a,b</sup>, Xia Li<sup>c</sup>, Wei Wang<sup>d</sup>, Hualiang Lin<sup>e,\*</sup>, Xiuhua Guo<sup>a,b,d,f,\*</sup>, Xiangtong Liu<sup>a,b,\*</sup>

<sup>a</sup> Department of Epidemiology and Health Statistics, School of Public Health, Capital Medical University, Beijing, China

<sup>b</sup> Beijing Municipal Key Laboratory of Clinical Epidemiology, Capital Medical University, Beijing, China

<sup>c</sup> Department of Mathematics and Statistics, La Trobe University, Melbourne 3086, Australia

<sup>d</sup> School of Medical Sciences and Health, Edith Cowan University, WA6027 Perth, Australia

<sup>e</sup> Department of Epidemiology, School of Public Health, Sun Yat-Sen University, Guangzhou, Guangdong, China

<sup>f</sup> National Institute for Data Science in Health and Medicine, Capital Medical University, China

<sup>g</sup> Department of Nutrition and Food Hygiene, School of Public Health, Hebei Medical University, Shijiazhuang, China;

## ARTICLE INFO

Handling Editor: Adrian Covaci

## Keywords:

Air pollutants  
Hospital admissions  
Length of stay  
Hospital cost  
Comorbidities

## ABSTRACT

**Background:** Evidence on the effects of the air pollutants on the hospital admissions, hospital cost and length of stay (LOS) among patients with comorbidities remains limited in China, particularly for patients with cardiovascular diseases and comorbid diabetes mellitus (CVD-DM).

**Methods:** We collected daily data on CVD-DM patients from 242 hospitals in Beijing between 2014 and 2019. Generalized additive model was employed to quantify the associations between admissions, LOS, and hospital cost for CVD-DM patients and air pollutants. We further evaluated the attributable risk posed by air pollutants to CVD-DM patients, using both Chinese and WHO air quality guidelines as reference.

**Results:** Per 10  $\mu\text{g}/\text{m}^3$  increase of particles with an aerodynamic diameter  $< 2.5 \mu\text{m}$  (PM<sub>2.5</sub>), particles with an aerodynamic diameter  $< 10 \mu\text{m}$  (PM<sub>10</sub>), sulfur dioxide (SO<sub>2</sub>), nitrogen dioxide (NO<sub>2</sub>), carbonic oxide (CO) and ozone (O<sub>3</sub>) corresponded to a 0.64% (95% CI: 0.57 to 0.71), 0.52% (95% CI: 0.46 to 0.57), 0.93% (95% CI: 0.67 to 1.20), 0.98% (95% CI: 0.81 to 1.16), 1.66% (95% CI: 1.18 to 2.14) and 0.53% (95% CI: 0.45 to 0.61) increment for CVD-DM patients' admissions. Among the six pollutants, particulate pollutants (PM<sub>2.5</sub> and PM<sub>10</sub>) in most lag days exhibited adverse effects on LOS and hospital cost. For every 10  $\mu\text{g}/\text{m}^3$  increase in PM<sub>2.5</sub> and PM<sub>10</sub>, the absolute increase with LOS will increase 62.08 days (95% CI: 28.93 to 95.23) and 51.77 days (95% CI: 22.88 to 80.66), respectively. The absolute increase with hospital cost will increase 105.04 Chinese Yuan (CNY) (95% CI: 49.27 to 160.81) and 81.76 CNY (95% CI: 42.01 to 121.51) in PM<sub>2.5</sub> and PM<sub>10</sub>, respectively. Given WHO 2021 air quality guideline as the reference, PM<sub>2.5</sub> had the maximum attributable fraction of 3.34% (95% CI: 2.94% to 3.75%), corresponding to an avoidable of 65,845 (95% CI: 57,953 to 73,812) patients with CVD-DM.

**Abbreviations:** LOS, Length of hospital stay; CVD-DM, Cardiovascular disease comorbid with diabetes; PM<sub>2.5</sub>, particles with an aerodynamic diameter  $< 2.5 \mu\text{m}$ ; PM<sub>10</sub>, particles with an aerodynamic diameter  $< 10 \mu\text{m}$ ; SO<sub>2</sub>, Sulfur dioxide; NO<sub>2</sub>, Nitrogen dioxide; O<sub>3</sub>, Ozone; CO, Carbonic Oxide; ICD-10, International Classification of Diseases 10th Revision; BMHCIC, Beijing were collected from Beijing Municipal Health Commission Information Center; BEPB, Beijing Environmental Protection Bureau; CMDSSS, China Meteorological Data Sharing Service System online; GAM, Generalize additive model; PC, Percentage change; df, Degree of freedom; AIC, Akaike information criterion; CI, Confidence interval; AN, Attributable number; PAF, Population attributable fraction; AQG, Air quality guideline; AOD, aerosol optical depth; LUR, Land use regression.

\* Corresponding authors at: Department of Epidemiology and Health Statistics, School of Public Health, Capital Medical University, 10 Xi-Tou-Tiao, You-An-Men Street, Fengtai District, Beijing 100069, China (Xiangtong Liu). Department of Epidemiology and Health Statistics, School of Public Health, Capital Medical University, 10 Xi-Tou-Tiao, You-An-Men Street, Fengtai District, Beijing 100069, China (Xiuhua Guo). Department of Epidemiology, School of Public Health, Sun Yat-Sen University, Guangzhou, Guangdong 510080, China (Hualiang Lin).

E-mail addresses: [linhualiang@mail.sysu.edu.cn](mailto:linhualiang@mail.sysu.edu.cn) (H. Lin), [statguo@ccmu.edu.cn](mailto:statguo@ccmu.edu.cn) (X. Guo), [lxiangtong@163.com](mailto:lxiangtong@163.com) (X. Liu).

<https://doi.org/10.1016/j.envint.2022.107301>

Received 27 November 2021; Received in revised form 10 May 2022; Accepted 11 May 2022

Available online 16 May 2022

0160-4120/© 2022 The Authors. Published by Elsevier Ltd. This is an open access article under the CC BY-NC-ND license (<http://creativecommons.org/licenses/by-nc-nd/4.0/>).

*Conclusion:* PM<sub>2.5</sub> and PM<sub>10</sub> are positively associated with hospital admissions, hospital cost and LOS for patients with CVD-DM. Policy changes to reduce air pollutants exposure may reduce CVD-DM admissions and substantial savings in health care spending and LOS.

## 1. Introduction

As one of the leading causes of morbidity and mortality, cardiovascular disease (CVD) and diabetes mellitus (DM) have caused a huge health burden worldwide (Joseph et al., 2017; Strain and Paldánus, 2018). According to the Global Burden of Disease (GBD) Study 2019, an estimated 523 million adults were living with CVD and 463 million adults were living with DM (Roth et al., 2020; Saeedi et al., 2019). CVD often coexists with DM in clinical practice (Rodríguez-Araujo and Nakagami, 2018). People with diabetes have a higher prevalence rate of CVD than people without diabetes (Sarwar, 2010), and the risk of CVD continues to increase as fasting plasma glucose levels rise, even before reaching levels sufficient for a diagnosis of diabetes (Singh, 2013). CVD and comorbid DM imposes a tremendous burden on patients (Low Wang, 2016; Einarson, 2018). To reduce the prevalence of comorbid CVD and DM, it is vital to examine modifiable risk factors to formulate appropriate measures for prevention and control.

Ambient air pollutants are common modifiable risk factors for both CVD and DM (Vallianou, 2021; Bhatnagar, 2017). For example, growing evidence showed that particulate matters are associated with CVD and DM (Aryal et al., 2021; Esposito, 2016). Etiological studies found patients with diabetes mellitus can have reduced vascular elasticity due to the large amount of glucose adhering to the inner walls of blood vessels (Alemayehu et al., 2020). At the same time, most patients with cardiovascular disease develop atherosclerosis of small blood vessels, which exacerbates the damage to vascular endothelial function caused by air pollution (Franchini, 2012). However, few studies have estimated the effect of air pollution in patients with cardiovascular diseases and comorbid diabetes mellitus (CVD-DM) (Aturinde, 2021; Hu, 2021), and could not completely reflect the burden of diseases using morbidity and mortality as indicators (Wang, 2018). Recently, the effect of air pollution on length of stay (LOS) and hospital cost have attracted increasing attention (Cao, 2021).

CVD and DM are more common and frequently less well-controlled in China due to low use of cardio-protective and glucose-control medications (Ma, 2020). Beijing, the capital of China, suffers from more serious air pollution than some cities in western developed countries, and studies have shown that the toxic composition of air pollutants varies from region to region (Yang, 2018). Therefore, we aimed to estimate the association of air pollutants with hospital admissions, LOS and hospital cost for CVD-DM patients in Beijing, China. Furthermore, we also discussed the attributable fraction of CVD-DM due to exposure to air pollution under different Air Quality Guidelines (AQG), such as the WHO AQG 2021 which has tightened the recommendation on all air pollutants (Hoffmann, 2021). We hypothesized that air pollution would be positively associated with hospital admissions, LOS and hospital cost for CVD-DM patients.

## 2. Material and methods

### 2.1. Data collection

#### 2.1.1. Patient data

CVD-DM patients data between January, 1, 2014 and December, 31, 2019 from 242 Second-class hospital or higher across Beijing were collected from Beijing Municipal Health Commission Information Center (BMHCIC, <https://www.phic.org.cn/>) which is a government agency that implements the specific work of integrating health information resources in Beijing and is responsible for the statistics and analysis of relevant health information data (Fig. S3). We have acquired a

cooperation agreement with BMHCIC. During the cooperation period we are authorized to perform data analysis at the Information Statistics Department of BMHCIC. Due to the sensitivity of the data, the raw data can only be obtained and used on a dedicated computer at BMHCIC.

The original database was individual data with patient ID, gender, age, date in hospital, length of stay, hospital cost and admission diagnosis. Then we reshaped the original database into time series data to get daily number of admissions, length of stay and hospital cost of CVD-DM patients with different demographic characteristics (e.g., age and gender). The admission diagnosis was determined by the International Classification of Diseases 10th Revision (ICD-10). The CVD-DM patient was defined as the admission diagnosis with an ICD-10 code between I00 and I99 and E12. More specific information about the data can be found in our previously published articles (Liu, 2021; Li, 2018; Akliu, 2020).

#### 2.1.2. Air pollutants and meteorology factors data

We collected air pollution data from 35 fixed monitoring stations set up by Beijing Environmental Protection Bureau (BEPB, <https://zx.bjmec.com.cn/?timestamp=1621413941009>), which is one of the first environmental professional monitoring institutions to obtain national-level metrological certification and a certificate of conformity for metrological certification granted by the China Technical Supervision Bureau. Air pollution data were monitored according to the standard methods specified in “Ambient Air Quality Standards GB 3095–2012” (China, 2016). All monitoring equipment follows the “Measures for On-site Supervision and Inspection of Pollution Source Automatic Monitoring Facilities” (China, 2012), and the air pollutant monitoring system was regularly calibrated dynamically using calibrators and analyzers certified by national metrology institutions. All the above documents were released by the Ministry of Ecological Protection of China. The variables include particulate matter <2.5 μm in diameter (PM<sub>2.5</sub>, μg/m<sup>3</sup>), particulate matter <10 μm in diameter (PM<sub>10</sub>, μg/m<sup>3</sup>), carbon monoxide (CO, mg/m<sup>3</sup>), ozone (O<sub>3</sub>, μg/m<sup>3</sup>), nitrogen dioxide (NO<sub>2</sub>, μg/m<sup>3</sup>) and sulfur dioxide (SO<sub>2</sub>, μg/m<sup>3</sup>) (Fig. S3). Meteorology factors data including temperature (°C) and relative humidity (%) were collected from China Meteorological Data Sharing Service System online (CMDSSS, <https://data.cma.cn/en>). We matched the average data aggregated across all monitoring sites with total hospital admissions data from 242 hospitals by date.

### 2.2. Statistical analysis

First, we used means, standard deviations (SD), quartiles, maximum, and minimum to describe the distribution of air pollutants and meteorology factors and used the calendar heat map to show the daily variation in the number of hospital admissions, LOS and hospital cost for CVD-DM patients.

Then, we used generalized additive model (GAM) to explore the relationship between daily CVD-DM patients admissions, LOS, hospital cost and air pollutions, respectively. GAM model was proposed by Hastie and Tibshirani and can be used in time series analysis (Prata et al., 2020; Qi, 2020). It is an extension of the generalized linear model and can deal with the complex nonlinear relationship of various variables using smooth function. We determined the parameters of GAM model and then calculated the Percentage change (%), PC for daily admissions and Absolute increase for LOS and hospital cost referred as previous study (Cao, 2021; Wang, 2020). The process of building the GAM model and the calculation methods of PC and Absolute increase can be found in Section S1 and Section S2 in supplementary.

We then explored the non-linear relationship using the `plot.gam()`

function from mgcv package. Its requirement is that the link function of the model be a log function, so we only explored the nonlinear relationship between air pollution and hospital admissions.

Next, we used two different lag structures to explore the delayed effect of air pollution (Byrne, 2020). Single lag is expressed as lag1, lag2, ..., lag3. Cumulative lag is shown as lag01, lag02 lag03. Lag1 denotes the concentration of air pollutants on the previous day. Lag01 denotes the 2-day moving average concentration of air pollutants concentrations on the present day and previous day. Considering that we are focus on acute effect of air pollution, we chose a maximum lag period of 7 days both for single lag and moving lag.

Following that, to better measure the burden of CVD-DM (e.g., admissions, LOS and hospital cost) attributable to air pollutants exposure, we used attributable number (AN) and population attributable fraction (PAF) based on the previous established GAM model. The method proposed by Lin et al. has been widely used in time series studies related to the assessment of the disease burden of air pollution (Wang, 2018; Cao, 2021; Lin, 2016). Three different standards were obtained as the reference concentration, including China's air quality guideline (AQG), WHO's 2005 AQG and WHO's 2021 AQG. The detailed procedures are shown in Section S3 in supplementary.

We also did subgroup analyses. Age and gender stratified subgroup analyses were used to explore differences in effect values across populations both in GAM model and attributable risk calculation. The Z test was adopted to test the differences between the different subgroups, where Z was calculated by the estimates of the two groups and compared to the standard normal distribution (Wang, 2020).

Finally, multiple sensitivity analyses were performed to confirm the stability of the results. For example, using single and multiple pollutant model, changing the *df* of time trend and excluding hospital that were far away from fixed air pollutant monitoring. All sensitivity analysis methods used in our study are shown in Section S4.

All statistical analyses were conducted in R software (version 4.0.2) using the MGCV, DLNM and TERRA packages. Arcmap software (version 10.5) was used for spatial mapping. The statistical tests were two-sided, and  $P < 0.05$  was considered statistically significant.

### 3. Result

#### 3.1. Basic descriptive results

A total of 1,969,755 CVD-DM patients were included in our study (Table S1), which related to 19.7 million length of hospital stay days and 24.7 billion CNY hospital cost. The daily range for CVD-DM admission, LOS and hospital cost were from 5 to 2,543 patients, 4,638.97 to 24,792.00 days and 6,714.65 to 36,588.83 thousand CNY, respectively. For the air pollutants, particulate pollutants had the widest concentration range which correspond to from 67.08  $\mu\text{g}/\text{m}^3$  to 444.09  $\mu\text{g}/\text{m}^3$  for  $\text{PM}_{2.5}$  and from 72.04  $\mu\text{g}/\text{m}^3$  to 901.24  $\mu\text{g}/\text{m}^3$  for  $\text{PM}_{10}$  (Table 1). Fig. S2 indicates that there were positive correlations between  $\text{PM}_{2.5}$ ,  $\text{PM}_{10}$ ,

$\text{SO}_2$ , CO and relative humidity among which  $\text{PM}_{2.5}$  and  $\text{PM}_{10}$ ,  $\text{PM}_{2.5}$  and CO had a strong correlation (correlation coefficient  $> 0.80$ ).  $\text{O}_3$ , average temperature and other pollutants showed a negative correlation.

#### 3.2. Effect of air pollution on CVD-DM

Fig. 1 shows the PC value in each air pollutants with different lag days in CVD-DM admissions in the multi-pollutant model. All six air pollutants show statistically different adverse effects. The best lag day varies among six pollutants for total population in which  $\text{PM}_{2.5}$  is 0.64% (95% CI: 0.57 to 0.71) at lag 06,  $\text{PM}_{10}$  is 0.52% (95% CI: 0.46 to 0.57) at lag 06,  $\text{SO}_2$  is 0.93% (95% CI: 0.67 to 1.20) at lag 01,  $\text{NO}_2$  is 0.98% (95% CI: 0.81 to 1.16) at lag 02, CO is 1.66% (95% CI: 1.18 to 2.14) at lag 03 and  $\text{O}_3$  is 0.53% (95% CI: 0.45 to 0.61) at lag 7. In age subgroup analysis, the effect is stronger in young adult than those over 65 years old.

Fig. 2 and Fig. 3 show the absolute increase with LOS and hospital cost in six air pollutants, respectively. Among the six pollutants, particulate pollutants ( $\text{PM}_{2.5}$  and  $\text{PM}_{10}$ ) in most lag days exhibited adverse effects on LOS and hospital cost. More specifically, for every 10  $\mu\text{g}/\text{m}^3$  of increase in  $\text{PM}_{2.5}$  and  $\text{PM}_{10}$  concentration, the absolute increase with LOS will increase 62.08 days (95% CI: 28.93 to 95.23) at lag 03 and 51.77 days (95% CI: 22.88 to 80.66) at lag 06, respectively. The absolute increase with hospital cost will increase 105.04 CNY (95% CI: 49.27 to 160.81) and 81.76 CNY (95% CI: 42.01 to 121.51) in  $\text{PM}_{2.5}$  and  $\text{PM}_{10}$ , respectively.

#### 3.3. Attributable risk of CVD-DM due to air pollution

We further estimated the attributable risk of air pollutants on CVD-DM for admissions, LOS and hospital cost based on China's AQG, WHO's 2005 AQG and WHO's 2021 AQG. More admissions, LOS and hospital cost will be avoided, in using the latest WHO 2021 AQG as the standard (Table 2 to Table 4).

Table 2 displays avoidable value and population attributable fraction for admissions in total population. The maximum attributable fraction in all pollutants is  $\text{PM}_{2.5}$  using WHO 2021 AQG as the reference which we estimated that about 3.34% (95% CI: 2.94% to 3.75%) corresponding to an avoidable of 65,845 (95% CI: 57,953 to 73,812) CVD-DM patients. Similar results were found in subgroup populations (Table S15 and Table S16).

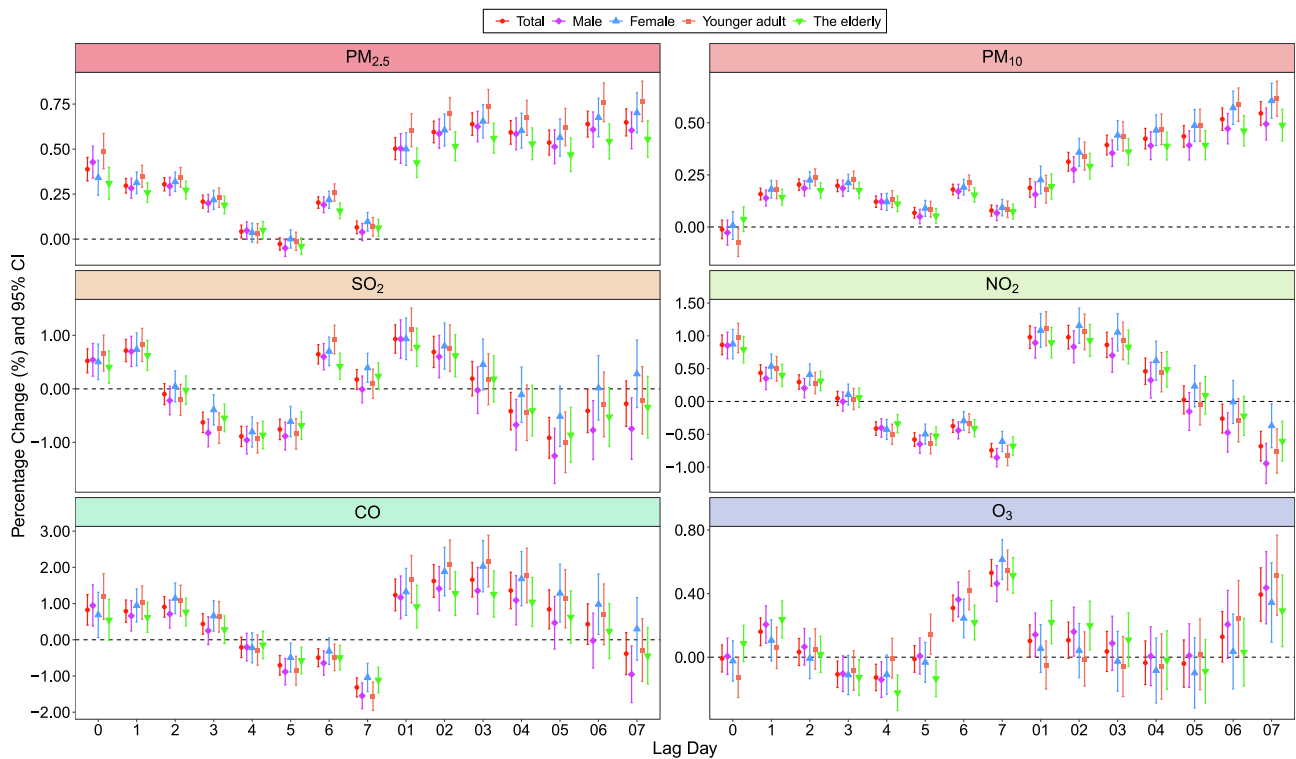
Table 3 and Table 4 displays avoidable value and population attributable fraction for LOS and hospital cost, respectively. Overall,  $\text{PM}_{10}$ ,  $\text{PM}_{2.5}$  and  $\text{O}_3$  will significantly avoid more LOS and hospital cost using WHO 2021 as the reference, compared to other air pollutants. However, the population attributable fraction of particulate pollutants is higher than that of  $\text{O}_3$ . Subgroup analyses stratified by age and sex found similar results (Table 17 to Table S20).

**Table 1**

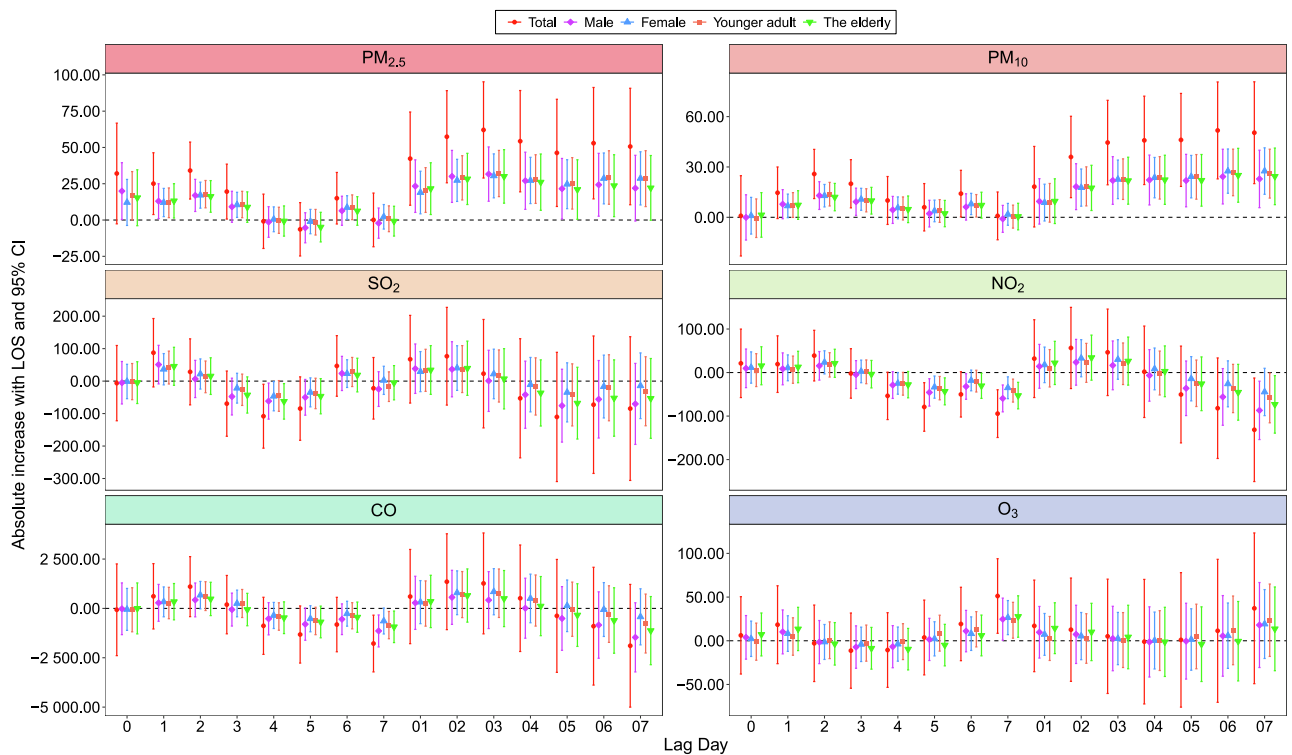
Distribution characteristics of daily cases of CVD-DM, air pollutants and meteorological factors in Beijing from 2014 to 2019.

Variables	Mean	SD	Min	P <sub>25</sub>	P <sub>50</sub>	P <sub>75</sub>	Max
Case number	899.02	475.60	5.00	386.00	975.00	1258.00	2543.00
LOS	8995.84	4638.97	77.00	3958.50	10081.00	12592.50	24792.00
Hospital cost (Thousand CNY)	13508.85	6714.65	33.68	5638.45	15071.67	18436.17	36588.83
$\text{PM}_{2.5}$	67.08	60.24	4.31	26.09	49.53	87.62	444.09
$\text{PM}_{10}$	99.08	72.04	5.63	51.98	81.80	123.84	901.24
$\text{SO}_2$	45.91	21.25	8.55	31.29	41.62	55.59	146.00
$\text{NO}_2$	11.17	13.82	2.03	3.34	6.34	12.36	127.79
CO	1.08	0.87	0.20	0.56	0.83	1.20	7.72
$\text{O}_3$	59.99	36.58	3.26	31.01	55.00	82.06	189.24
Temperature	12.64	12.51	-31.99	1.36	14.20	23.74	38.06
Humidity	53.77	19.16	11.30	38.26	53.47	69.76	95.43

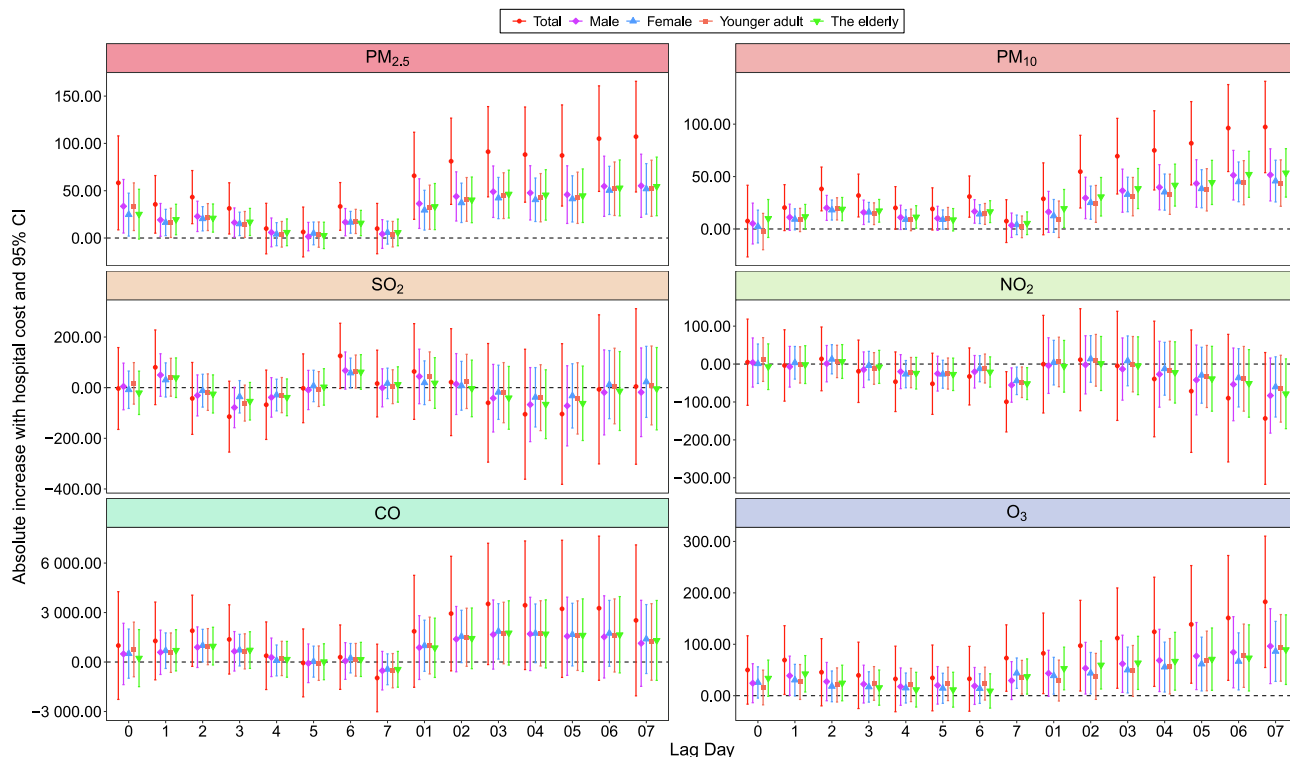
SD: Standard deviation; LOS: length of hospital stay; The hospital cost data is only available for 2014 to 2018.



**Fig. 1.** The effect of six air pollutants on admission with multiple pollutant model. Note: Percentage Change for PM<sub>2.5</sub>, PM<sub>10</sub>, SO<sub>2</sub>, NO<sub>2</sub> and O<sub>3</sub> were per 10 ug/m<sup>3</sup> increase and 1 mg/m<sup>3</sup> for CO. Younger Adult: Age less than or equal to 65 years old. The elderly: Age over 65 years old.



**Fig. 2.** The effect of six air pollutants on LOS with multiple pollutant model. Note: Absolute increase for PM<sub>2.5</sub>, PM<sub>10</sub>, SO<sub>2</sub>, NO<sub>2</sub> and O<sub>3</sub> were per 10 ug/m<sup>3</sup> increase and 1 mg/m<sup>3</sup> for CO. Younger Adult: Age less than or equal to 65 years old. The elderly: Age over 65 years old.



**Fig. 3.** The effect of six air pollutants on hospital cost with multiple pollutant model. Note: Absolute increase for PM<sub>2.5</sub>, PM<sub>10</sub>, SO<sub>2</sub>, NO<sub>2</sub> and O<sub>3</sub> were per 10 ug/m<sup>3</sup> increase and 1 mg/m<sup>3</sup> for CO. Younger Adult: Age less than or equal to 65 years old. The elderly: Age over 65 years old.

**Table 2**  
The admission attributable risk for different population with different air quality guideline.

Type	Air Pollution	Guideline	Avoidable value	Population attributable fraction (%)
China	PM <sub>2.5</sub>	75	31,728 (27916, 35577)	1.61 (1.42, 1.81)
	PM <sub>10</sub>	150	18,133 (16171, 20116)	0.92 (0.82, 1.02)
	SO <sub>2</sub>	150	NA	NA
	NO <sub>2</sub>	80	2471 (2032, 2911)	0.13 (0.1, 0.15)
	CO <sup>#</sup>	4	561 (399, 724)	0.03 (0.02, 0.04)
	O <sub>3</sub>	160	NA	NA
WHO 2005	PM <sub>2.5</sub>	25	61,074 (53753, 68466)	3.1 (2.73, 3.48)
	PM <sub>10</sub>	50	63,373 (56575, 70230)	3.22 (2.87, 3.57)
	SO <sub>2</sub>	20	4411 (3152, 5683)	0.22 (0.16, 0.29)
	O <sub>3</sub> <sup>*</sup>	100	4369 (3676, 5063)	0.22 (0.19, 0.26)
WHO 2021	PM <sub>2.5</sub>	15	65,845 (57953, 73812)	3.34 (2.94, 3.75)
	PM <sub>10</sub>	45	72,261 (64509, 80079)	3.67 (3.27, 4.07)
	SO <sub>2</sub>	40	1862 (1331, 2399)	0.09 (0.07, 0.12)
	NO <sub>2</sub>	25	42,120 (34613, 49681)	2.14 (1.76, 2.52)

<sup>#</sup>: China and WHO 2021 have the same standards for CO.  
<sup>\*</sup>: WHO 2005 and WHO 2021 have the same standards for ozone.  
 NA: The number of days over the recommended threshold during the study period was too small to calculate results.

**Table 3**  
The LOS attributable risk for different population with different air quality guideline.

Type	Air Pollution	Guideline	Avoidable value	Population attributable fraction (%)
China	PM <sub>2.5</sub>	75	255,473 (119053, 391894)	1.3 (0.6, 1.99)
	PM <sub>10</sub>	150	135,013 (59662, 210365)	0.69 (0.3, 1.07)
	SO <sub>2</sub>	150	NA	NA
	NO <sub>2</sub>	80	15,761 (-10251, 41772)	0.08 (-0.05, 0.21)
	CO <sup>#</sup>	4	5797 (-4616, 16209)	0.03 (-0.02, 0.08)
	O <sub>3</sub>	160	NA	NA
WHO 2005	PM <sub>2.5</sub>	25	605,022 (281945, 928098)	3.07 (1.43, 4.71)
	PM <sub>10</sub>	50	599,754 (265029, 934478)	3.04 (1.34, 4.74)
	SO <sub>2</sub>	20	49,296 (-10163, 108756)	0.25 (-0.05, 0.55)
	O <sub>3</sub> <sup>*</sup>	100	44,473 (7407, 81539)	0.23 (0.04, 0.41)
WHO 2021	PM <sub>2.5</sub>	15	718,244 (334708, 1101780)	3.64 (1.7, 5.59)
	PM <sub>10</sub>	45	644,654 (284870, 1004437)	3.27 (1.45, 5.1)
	SO <sub>2</sub>	40	18,039 (-3719, 39797)	0.09 (-0.02, 0.2)
	NO <sub>2</sub>	25	267,831 (-174195, 709857)	1.36 (-0.88, 3.6)

<sup>#</sup>: China and WHO 2021 have the same standards for CO.  
<sup>\*</sup>: WHO 2005 and WHO 2021 have the same standards for ozone.  
 NA: The number of days over the recommended threshold during the study period was too small to calculate results.

**Table 4**  
The hospital cost attributable risk for different population with different air quality guideline.

Type	Air pollution	Guideline	Avoidable value	Population attributable fraction (%)
China	PM <sub>2.5</sub>	75	424,389 (192691, 656087)	1.72 (0.78, 2.66)
	PM <sub>10</sub>	150	245,429 (135461, 355398)	0.99 (0.55, 1.44)
	SO <sub>2</sub>	150	NA	NA
	NO <sub>2</sub>	80	3775 (−19513, 27062)	0.02 (−0.08, 0.11)
	CO <sup>#</sup>	4	15,109 (−662, 30880)	0.06 (0, 0.13)
WHO 2005	O <sub>3</sub>	160	NA	NA
	PM <sub>2.5</sub>	25	963,217 (437343, 1489091)	3.9 (1.77, 6.04)
	PM <sub>10</sub>	50	1,029,877 (568425, 1491330)	4.18 (2.3, 6.05)
	SO <sub>2</sub>	20	70,866 (−1813, 143546)	0.29 (−0.01, 0.58)
WHO 2021	O <sub>3</sub> <sup>*</sup>	100	128,844 (38677, 219011)	0.52 (0.16, 0.89)
	PM <sub>2.5</sub>	15	1,129,671 (512921, 1746422)	4.58 (2.08, 7.08)
	PM <sub>10</sub>	45	1,101,928 (608192, 1595664)	4.47 (2.47, 6.47)
	SO <sub>2</sub>	40	25,932 (−664, 52528)	0.11 (0, 0.21)
	NO <sub>2</sub>	25	58,765 (−303771, 421302)	0.24 (−1.23, 1.71)

#: China and WHO 2021 have the same standards for CO.

\*: WHO 2005 and WHO 2021 have the same standards for ozone.

NA: The number of days over the recommended threshold during the study period was too small to calculate results.

### 3.4. The exposure–response curve between air pollution and hospital admissions

The exposure–response curve between six air pollutants and CVD-DM patient admissions are shown in Fig. S23. Approximately U-shaped curves with different degrees of curvature were observed in each air pollutant, which indicated that the effect of air pollution on CVD-DM patient admissions tend to be nonlinear. For example, high risks were observed for high NO<sub>2</sub> concentrations, with flat slopes at low concentrations and steeper slopes for concentrations  $\geq 60 \mu\text{g}/\text{m}^3$ .

### 3.5. Sensitivity analysis

Our sensitivity analyses by varying the time and air pollution degrees of freedom did not substantially change the effect estimates (Fig. S8 to Fig. S10), and the E-value calculated for the total population and each subpopulation did not exceed the original RR (Table S21). The results were very close between 6 air pollutants and 3 different outcomes (hospital admissions, length of stay and hospital cost) in single and multiple pollutant model using the screened hospital data and all hospital data (Fig. S11 to Fig. S16). The model results from CHAP data were mostly consistent with the results using 35 fixed monitoring stations (Fig. S17 to Fig. S22).

## 4. Discussion

Most previous studies have examined the separate associations between air pollutants and CVD or DM, and few studies have investigated the association between air pollutants and patients with CVD-DM. This is the first study, to our knowledge, to examine the relationship between

the six air pollutants and hospital admissions, LOS and hospital cost among patients with CVD-DM, synchronously, as well as the burden of CVD-DM attributable to air pollutants exposure. We observed that daily air pollution especially particulate matter pollutants are associated with an increased risk of hospital admissions, LOS and hospital cost for patients with CVD-DM.

For most air pollutants, the effects of air pollutants at lag 0 are already statistically significant for patients with CVD-DM and reached maximum effect at lag 03 or lag 06 in our study. However, other epidemiological studies have found a general 2–6 days lag in the effect of air pollutants on patients with CVD or DM alone (Kuzma, 2020). A study based on 8084 Italian municipalities reported that the effect of PM<sub>2.5</sub> and PM<sub>10</sub> on cardiovascular mortality is not statistically significant until at lag 6 averagely (Stafoggia, 2020). Mojtaba et al. found that there were a statistically significant effects on emergency hospital admissions of cardiovascular patients only at lag 2 for PM<sub>2.5</sub> and lag 4 for CO (Sepandi, 2021). Similar findings also have been found in other countries or other subpopulations (Ishii, 2021; Ribeiro, 2019). On the other hand, the effects of air pollutants on hospital admissions for patients with CVD-DM were stronger. For example, we found that increases of 10  $\mu\text{g}/\text{m}^3$  in PM<sub>2.5</sub> was associated with 0.64% (95% CI: 0.57 to 0.71) increases in hospital admissions for CVD-DM patients with best lag day in multiple pollutants model. A study based on a population of 28 million, also conducted in China, found that each 10  $\mu\text{g}/\text{m}^3$  in PM<sub>2.5</sub> was associated with 0.34% (95% CI: 0.20 to 0.48), which were slightly lower than the effect in the CVD-DM patients in our study (Tian, 2018).

There are several reasons to interpret the observed faster and stronger effects of air pollutants in patients with CVD-DM, comparing with the previous epidemiology studies. First, patients with CVD-DM have weaker immune systems. In patients with CVD, plasma lipoproteins are more likely to retain in the subendothelial wall of arteries triggering the formation of atherosclerotic plaques by T helper type 1 (Th1) cells and monocyte-derived macrophages, thereby weakening the immune system's resistance to other toxic substances, such as heavy metals carried in particulate matter (Muhammad et al., 2021). Other studies have also shown that high glucose levels can also damage the immune system. These mechanisms include suppression of cytokine production, defects in phagocytosis, dysfunction of immune cells, and failure to kill microbials (Berbudi, 2020). Second, our study site is still at high levels of air pollution. Compared to developed countries in Europe and the Americas, air pollutant levels in China, especially in the northern regions (e.g., Beijing), are still high. For example, the average PM<sub>2.5</sub> concentration in a survey of air pollutant levels and population health conducted in Canada was only 8.9  $\mu\text{g}/\text{m}^3$  (Crouse, 2015), while the value in our study was 67.1  $\mu\text{g}/\text{m}^3$ , which is 7.5 times higher than the Canadian level. In addition, particulate matter is a complex mixture and the toxicology of each chemical component may vary by time and locations which shows different effect sizes in different regions (Yang, 2018).

We also observed in the age-stratified subgroup analysis that the effect of air pollutions on people older than 65 years were slightly lower than those younger adults. This may be related to the time spent outdoors. In China, outdoor physical activity has been a traditional practice (Li, 2015), which makes young people more likely to inhale air pollutants compared to the elderly, thus showing a stronger effect of air pollutants on young people (Kim, 2021).

We observed that the relationship between six air pollutants and LOS and hospital cost were mainly significant in particulate pollutants for CVD-DM patients, which were in line with a few other studies. Xuayan et al. reported that after adjusting for multiple confounding factors, exposures to PM<sub>2.5</sub> and PM<sub>10</sub> were associated with increased LOS for all ischemic heart disease patients in both single- and multi-pollutant models (Voorhees, 2014). In Shanghai, Voorhees et al. founded that avoided hospital admissions had an estimated value from 20 to 43 million yuan for PM<sub>10</sub> (Pinault, 2018). One similar study conducted in Unites States reported that in multivariable analyses, a 1  $\text{mg}/\text{m}^3$



increase in monthly PM<sub>2.5</sub> led to a \$47 increase in LOS (Fann, et al., 2017).

The attributable risk estimated both using China's AQG and WHO's AQG in our study was in line with a few studies (Bennett, 2019; Organization, 2021). And the associations remained similar when using WHO's AQG 2005 and WHO's AQG 2021, respectively. For example, when the recommended concentration of PM<sub>2.5</sub> was reduced from 25 ug/m<sup>3</sup> to 15 ug/m<sup>3</sup>, the population attributable fraction for hospital admissions in CVD-DM patients was only reduced from 3.1% to 3.34%. Although this is only a 0.24% reduction, if this ratio was applied to the global population of 7.6 billion, it would reduce hospital admissions for 18.24 million CVD-DM patients, which is a tremendous number. WHO proposed the new guideline to facilitate stepwise improvement in air quality and thus gradual, but meaningful, health benefits for the population, of which the greatest benefit would be observed in countries with high air pollution levels and large populations such as China (Miller et al., 2012). In addition; the new guidelines could provide new evidence-informed tools for policymakers in each country to guide legislation and policies to reduce global air pollutant levels and reduce the burden of disease caused by exposure to air pollution.

In our study, we employed multiple sensitivity analyses to confirm the stability of the results. The results of most sensitivity analyses were consistent. However, it is worth to be noted that the difference between the results of CHAP data and the results of Original data in the multi-pollutant model is slightly larger compared to the results of the single-pollutant model (For example, PM<sub>10</sub> in Fig. S17 vs. PM<sub>10</sub> in Fig. S20). We interpret this difference to be due to the different variables in the model. More specifically, in single-pollutant model, only the air pollutant of interest was included in the model in addition to the covariates, whether CHAP data or Original data were used. In multi-pollutant model, only PM<sub>10</sub> and O<sub>3</sub> were included when using CHAP data. However, when using Original data, in addition to the air pollutant of interest, the other 5 pollutants were also adjusted in multi-pollutant model in the form of principal components. All sensitivity analyses prove that our results are robust.

There are several potential mechanisms to explain the adverse effects of air pollution for CVD-DM patients. Firstly, the inflammatory response induced in the lungs by inhaled air pollutants (e.g. SO<sub>2</sub>, CO) leads to the release of cytokines and other mediators that reach all parts of the body through the systemic circulation (Jia et al., 2017). Secondly, pollutants may cross the alveolar wall and interact directly with the cardiovascular system (Liu, 2014). Thirdly, for particulate pollutants, it may activate the autonomic nervous system through sensory receptors on the alveolar surface, which has been reported as a rapid way to affect cardiovascular function (Jia et al., 2017). Finally, inhaled air pollutants could also damage endothelial dysfunction, hepatic insulin resistance, elevated hemoglobin level and alterations in autonomic tone which may increase insulin resistance (Dionisio et al., 2016; SYSU. Satellite Data to Freshman, 2022).

Our study encompasses several strengths. First, there was a large sample size, corresponding to nearly 2 million CVD-DM patients from 242 Second-class hospital or higher across Beijing were included in our study, which gives a good representation for the estimate. Second, we measured the relationship between air pollution and CVD-DM patients in several aspects, including hospital admissions, LOS and hospital cost which allows us for a more comprehensive view for the relationship between air pollutants and CVD-DM patients in terms of acute effects and disease burden. Third, we used multiple criteria including China's and WHO's AQG to estimate the attributable risk of pollutants. This is the first time the WHO's 2021 AQG has been applied to a real-world study since its publishing in September 2021.

Several limitations should be noted. First, this study is an observational and ecological study, we cannot draw a causal inference although we used several methods to reduce the confounding bias. Second, We calculated air pollutant concentrations based on fixed monitoring stations, which may result in exposure measurement errors (Dionisio et al.,

2016; SYSU. Satellite Data to Freshman, 2022). Third, Due to the expiration of the collaboration with BMHCIC, our study only focused on patients with total CVD comorbid with DM, and not all CVD subtypes are associated with air pollutants (Stafoggia, 2020). Meanwhile, we cannot check the number of hospital admission for CVD and DM respectively. We will continue to discuss with BMHCIC to obtain different types of CVD data for more detailed analysis in the future. Finally, we cannot adjust for confounding factors such as lifestyle habits, medication history, etc. for each individual, due to the aggregated time series data.

Based on the findings of our present study and limitations, we propose the following points for future research. First, subsequent studies should be based on individual data with residential information for more in-depth exploration. We believe that data based on individual address information is more suitable for use in conjunction with satellite data such as AOD data (Dionisio et al., 2016; SYSU. Satellite Data to Freshman, 2022) because it is possible to obtain accurate individual air pollution exposure through latitude and longitude information. Second, the specific components of particulate pollutants and the sources of gaseous pollutants vary from country to country, and subsequent studies should focus more on the effects of particular component. Finally, our study only preliminarily observed the effect of air pollution on total CVD comorbid with DM, and future studies should concentrate on the relationship between different subtypes of CVD comorbid with DM and air pollution to provide more precise findings.

## 5. Conclusion

In summary, air pollutants exposure especially PM<sub>2.5</sub> and PM<sub>10</sub> are associated with increased hospital admissions, hospital cost and length of hospital stay for CVD-DM patients. The effects of air pollutants are faster and stronger in patients with CVD-DM, compared to patients with CVD or DM alone. Policy changes to reduce air pollutants exposure may lead to improved CVD-DM admissions and substantial savings in health care spending and hospital stay.

## Ethical approval

The study protocol was approved by the Institutional Review Board at the School of Public Health, Capital Medical University.

## Consent for publication

Our manuscript does not contain any individual person's data in any form (including any individual details, images or videos), so written informed consent was not required.

## Funding source

Funding: This study was supported by the Program of the Natural Science Fund of China (No.82003559, No.82073668). The sponsors of the study had no role in study design, data collection, data analysis, interpretation, or writing of the report. The corresponding author had full access to all the data in the study and had final responsibility for the decision to submit for publication.

## Declaration of Competing Interest

The authors declare that they have no known competing financial interests or personal relationships that could have appeared to influence the work reported in this paper.

## Acknowledgments

We thank all the healthcare personnel who contributed to the detection, epidemiological investigation, and data release for the air pollutions data and meteorological data.

## Appendix A. Supplementary data

Supplementary data to this article can be found online at <https://doi.org/10.1016/j.envint.2022.107301>.

## References

- Aklilu, D., et al., 2020. Short-term effects of extreme temperatures on cause specific cardiovascular admissions in Beijing. *China Environ. Res.* 186, 109455.
- Alemayehu, Y.A., Asfaw, S.L., Terfie, T.A., 2020. Exposure to urban particulate matter and its association with human health risks. *Environ. Sci. Pollut. Res. Int.* 27 (22), 27491–27506.
- Aryal, A., Harmon, A.C., Dugas, T.R., 2021. Particulate matter air pollutants and cardiovascular disease: Strategies for intervention. *Pharmacol. Ther.* 223, 107890.
- Aturinde, A., et al., 2021. Spatial Analysis of Ambient Air Pollution and Cardiovascular Disease (CVD) Hospitalization Across Sweden. *GeoHealth*, 5(5): p. e2020GH000323.
- Bennett, J.E., et al., 2019. Particulate matter air pollution and national and county life expectancy loss in the USA: A spatiotemporal analysis. *PLoS Med.* 16 (7), e1002856.
- Berbudi, A., et al., 2020. Type 2 Diabetes and its Impact on the Immune System. *Curr. Diabetes Rev.* 16 (5), 442–449.
- Bhatnagar, A., 2017. Environmental Determinants of Cardiovascular Disease. *Circ. Res.* 121 (2), 162–180.
- Byrne, C.P., et al., 2020. Short-Term Air Pollution as a Risk for Stroke Admission: A Time-Series Analysis. *Cerebrovasc. Dis.* 49 (4), 404–411.
- Cao, D., et al., 2021. Ambient PM(2.5) exposure and hospital cost and length of hospital stay for respiratory diseases in 11 cities in Shanxi Province. *China. Thorax.*
- Cao, D., et al., 2021. Ambient PM exposure and hospital cost and length of hospital stay for respiratory diseases in 11 cities in Shanxi Province. *China. Thorax.*
- China, M.o.E.P.o. Measures for On-site Supervision and Inspection of Pollution Source Automatic Monitoring Facilities, 2012. Access date: 3/25/2022; Available from: [http://www.mee.gov.cn/gkml/hbb/bl/201202/t20120213\\_223413.htm](http://www.mee.gov.cn/gkml/hbb/bl/201202/t20120213_223413.htm).
- Crouse, D.L., et al., 2015. Ambient PM<sub>2.5</sub>, O<sub>3</sub>, and NO<sub>2</sub> Exposures and Associations with Mortality over 16 Years of Follow-Up in the Canadian Census Health and Environment Cohort (CanCHEC). *Environ. Health Perspect.*, 2015. 123(11): p. 1180–6.
- Dionisio, K.L., Chang, H.H., Baxter, L.K., 2016. A simulation study to quantify the impacts of exposure measurement error on air pollution health risk estimates in copollutant time-series models. *Environmental health : a global access science source* 15 (1), 114.
- Einarson, T.R., et al., 2018. Prevalence of cardiovascular disease in type 2 diabetes: a systematic literature review of scientific evidence from across the world in 2007–2017. *Cardiovasc. Diabetol.* 17 (1), 83.
- Esposito, K., et al., 2016. Particulate matter pollutants and risk of type 2 diabetes: a time for concern? *Endocrine* 51 (1), 32–37.
- Fann, N., et al., 2017. Estimated Changes in Life Expectancy and Adult Mortality Resulting from Declining PM<sub>2.5</sub> Exposures in the Contiguous United States: 1980–2010. *Environmental health perspectives*, 2017. 125(9): p. 097003.
- Franchini, M., et al., 2012. Air pollution, vascular disease and thrombosis: linking clinical data and pathogenic mechanisms. *J. Thromb. Haemost.* 10 (12), 2438–2451.
- Hoffmann, B., et al., 2021. WHO Air Quality Guidelines 2021–Aiming for Healthier Air for all: A Joint Statement by Medical, Public Health, Scientific Societies and Patient Representative Organisations. *Int. J. Public Health* 66 (88).
- Hu, Q., et al., 2021. Association of ambient particle pollution with gestational diabetes mellitus and fasting blood glucose levels in pregnant women from two Chinese birth cohorts. *Sci. Total Environ.* 762, 143176.
- Ishii, M., et al., 2021. Association of short-term exposure to air pollution with myocardial infarction with and without obstructive coronary artery disease. *Eur. J. Preventive Cardiology* 28 (13), 1435–1444.
- Jia, Y.-Y., Q. Wang, and T. Liu, Toxicity Research of PM Compositions In Vitro. *International journal of environmental research and public health*, 2017. 14(3).
- Joseph, P., Leong, D., McKee, M., Anand, S.S., Schwalm, J.-D., Teo, K., Mente, A., Yusuf, S., 2017. Reducing the Global Burden of Cardiovascular Disease, Part 1: The Epidemiology and Risk Factors. *Circ. Res.* 121 (6), 677–694.
- Kim, S.R., et al., 2021. Association of the combined effects of air pollution and changes in physical activity with cardiovascular disease in young adults. *Eur. Heart J.* 42 (25), 2487–2497.
- Kuźma, Ł., et al., 2020. Effect of air pollution on the number of hospital admissions for acute coronary syndrome in elderly patients. *Polish archives of internal medicine* 130 (1), 38–46.
- Li, F., et al., 2015. Ambient air pollution in China poses a multifaceted health threat to outdoor physical activity. *J. Epidemiol. Community Health* 69 (3), 201–204.
- Li, H., et al., 2018. Effects of ambient carbon monoxide on daily hospitalizations for cardiovascular disease: a time-stratified case-crossover study of 460,938 cases in Beijing, China from 2013 to 2017. *Environ. Health* 17 (1), 82.
- Lin, H., et al., 2016. Mortality burden of ambient fine particulate air pollution in six Chinese cities: Results from the Pearl River Delta study. *Environ. Int.* 96, 91–97.
- Liu, C., et al., 2014. Exaggerated effects of particulate matter air pollution in genetic type II diabetes mellitus. *Part. Fibre Toxicol.* 11, 27.
- Liu, X., et al., 2021. Acute effect of particulate matter pollution on hospital admissions for stroke among patients with type 2 diabetes in Beijing, China, from 2014 to 2018. *Ecotoxicol. Environ. Saf.* 217, 112201.
- Low Wang, C.C., et al., 2016. Clinical Update: Cardiovascular Disease in Diabetes Mellitus: Atherosclerotic Cardiovascular Disease and Heart Failure in Type 2 Diabetes Mellitus - Mechanisms, Management, and Clinical Considerations. *Circulation* 133 (24), 2459–2502.
- Ma, L.Y., et al., 2020. China cardiovascular diseases report 2018: an updated summary. *J. Geriatr. Cardiol.* 17 (1), 1–8.
- Miller, M.R., Shaw, C.A., Langrish, J.P., 2012. From particles to patients: oxidative stress and the cardiovascular effects of air pollution. *Future cardiology* 8 (4), 577–602.
- Muhammad, K., Ayoub, M.A., Iratni, R., 2021. Vascular Inflammation in Cardiovascular Disease: Is Immune System Protective or Bystander? *Curr. Pharm. Des.* 27 (18), 2141–2150.
- Organization, W.H. New WHO Global Air Quality Guidelines aim to save millions of lives from air pollution, 2021. Access date: 3/26/2022; Available from: <https://www.who.int/news/item/22-09-2021-new-who-global-air-quality-guidelines-aim-to-save-millions-of-lives-from-air-pollution>.
- Pinaut, L., et al., 2018. Diabetes Status and Susceptibility to the Effects of PM<sub>2.5</sub> Exposure on Cardiovascular Mortality in a National Canadian Cohort. *Epidemiology (Cambridge, Mass.)* 29 (6), 784–794.
- Prata, D.N., Rodrigues, W., Bermejo, P.H., 2020. Temperature significantly changes COVID-19 transmission in (sub)tropical cities of Brazil. *Sci. Total Environ.* 729, 138862.
- Qi, H., et al., 2020. COVID-19 transmission in Mainland China is associated with temperature and humidity: A time-series analysis. *Sci. Total Environ.* 728, 138778.
- Ribeiro, P.C., et al., 2019. Fine particulate matter and ischemic heart diseases in relation to sex. An ecological time series study. *Sao Paulo Med J* 137 (1), 60–65.
- Rodriguez-Araujo, G., Nakagami, H., 2018. Pathophysiology of cardiovascular disease in diabetes mellitus. *Cardiovasc. Endocrinol. Metab.* 7 (1), 4–9.
- Roth, G.A., et al., 2019. Global Burden of Cardiovascular Diseases and Risk Factors, 1990–2019: Update From the GBD 2019 Study. *J. Am. Coll. Cardiol.*, 2020. 76(25): p. 2982–3021.
- Saeedi, P., Petersohn, I., Salpea, P., Malanda, B., Karuranga, S., Unwin, N., Colagiuri, S., Guariguata, L., Motala, A.A., Ogurtsova, K., Shaw, J.E., Bright, D., Williams, R., 2019. Global and regional diabetes prevalence estimates for 2019 and projections for 2030 and 2045: Results from the International Diabetes Federation Diabetes Atlas, 9 (th) edition. *Diabetes Res. Clin. Pract.* 157, 107843. <https://doi.org/10.1016/j.diabres.2019.107843>.
- Sarwar, N., et al., 2010. Diabetes mellitus, fasting blood glucose concentration, and risk of vascular disease: a collaborative meta-analysis of 102 prospective studies. *Lancet* 375 (9733), 2215–2222.
- Sepandi, M., et al., 2021. Emergency hospital admissions for cardiovascular diseases attributed to air pollution in Tehran during 2016–2019. *Environ. Sci. Pollut. Res. Int.* 28 (28), 38426–38433.
- Singh, G.M., et al., 2013. The age-specific quantitative effects of metabolic risk factors on cardiovascular diseases and diabetes: a pooled analysis. *PLoS ONE* 8 (7), e65174.
- Stafoggia, M., et al., 2020. Short-term effects of particulate matter on cardiovascular morbidity in Italy: a national analysis. *Eur. J. Preventive Cardiology*.
- Strain, W.D., Paldánus, P.M., 2018. Diabetes, cardiovascular disease and the microcirculation. *Cardiovascular diabetology* 17 (1), 57.
- Tian, Y., et al., 2018. Association between ambient air pollution and daily hospital admissions for ischemic stroke: A nationwide time-series analysis. *PLoS Med.* 15 (10), e1002668.
- Vallianou, N.G., et al., 2021. Diabetes mellitus in the era of climate change. *Diabetes Metab.* 47 (4), 101205.
- Voorhees, A.S., et al., 2014. Public health benefits of reducing air pollution in Shanghai: a proof-of-concept methodology with application to BenMAP. *Sci. Total Environ.* 485–486, 396–405.
- Wang, X., et al., 2018. Ambient coarse particulate pollution and mortality in three Chinese cities: Association and attributable mortality burden. *Sci. Total Environ.* 628–629, 1037–1042.
- Wang, M., et al., 2020. The association between PM(2.5) exposure and daily outpatient visits for allergic rhinitis: evidence from a seriously air-polluted environment. *Int. J. Biometeorol.* 64 (1), 139–144.
- Wang, X., et al., 2020. Associations between acute exposure to ambient air pollution and length of stay for inpatients with ischemic heart disease: a multi-city analysis in central China. *Environ. Sci. Pollut. Res. Int.* 27 (35), 43743–43754.
- Yang, Y., et al., 2018. Particulate matter components and health: a literature review on exposure assessment. *J. Public Health and Emergency* 2.
- Yang, Y., et al., 2018. Particulate matter components and health: a literature review on exposure assessment. *J. Public Health Emerg.* 2, 14.
- China, M.o.E.P.o. Ambient Air Quality Standards GB 3095-2012, 2016. Access date: 3/25/2022; Available from: [http://www.mee.gov.cn/ywqz/fqgz/bz/bzwb/dqjhjhd/dqjhjlbz/201203/t20120302\\_224165.htm](http://www.mee.gov.cn/ywqz/fqgz/bz/bzwb/dqjhjhd/dqjhjlbz/201203/t20120302_224165.htm).
- SYSU. Satellite Data to Freshman. 2022 3/25/2022; Available from: <http://www.satdatafresh.com/index.html>.