

CORRECTION OPEN



Author Correction to: SARS-CoV-2 interaction with Siglec-1 mediates *trans*-infection by dendritic cells

Daniel Perez-Zsolt, Jordana Muñoz-Basagoiti, Jordi Rodon , Marc Elosua-Bayes, Dàlia Raïch-Regué , Cristina Risco , Martin Sachse, Maria Pino, Sanjeev Gumber, Mirko Paiardini , Jakub Chojnacki, Itziar Erkizia, Xabier Muñoz-Trabudua, Ester Ballana , Eva Riveira-Muñoz, Marc Noguera-Julian, Roger Paredes, Benjamin Trinité, Ferran Tarrés-Freixas, Ignacio Blanco, Victor Guallar, Jorge Carrillo , Julià Blanco, Amalio Telenti, Holger Heyn , Joaquim Segalés , Bonaventura Clotet, Javier Martínez-Picado , Júlia Vergara-Alert and Nuria Izquierdo-Useros

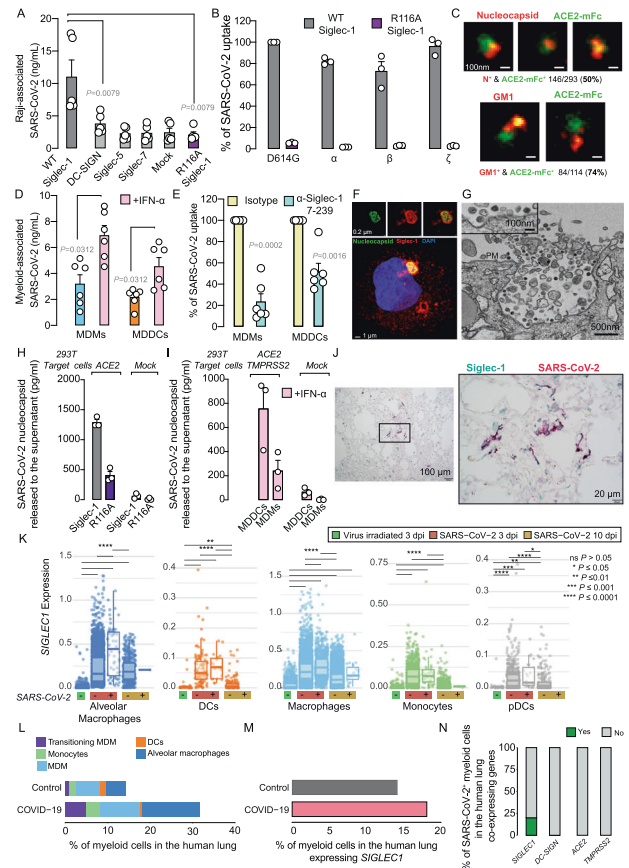
© The Author(s), under exclusive licence to CSI and USTC 2022

Cellular & Molecular Immunology (2022) 19:965–966; <https://doi.org/10.1038/s41423-022-00893-y>

Correction to: Cellular & Molecular Immunology <https://doi.org/10.1038/s41423-021-00794-6>, published online 15 November 2021

In the version of this correspondence initially published, one of the SARS-CoV-2 variants used in Fig. 1B, which was originally described in the article as the SARS-CoV-2 variant 'B.1.1.248.2 Gamma', is actually the 'P.2 Zeta' SARS-CoV-2 variant of interest. The GISAID accession ID EPI_ISL_1831696 provided is correct, but

it belongs to the Zeta variant. The results and conclusions are not affected by this unintentional inaccuracy.





Open Access This article is licensed under a Creative Commons Attribution 4.0 International License, which permits use, sharing, adaptation, distribution and reproduction in any medium or format, as long as you give appropriate credit to the original author(s) and the source, provide a link to the Creative Commons license, and indicate if changes were made. The images or other third party material in this article are included in the article's Creative Commons license, unless indicated otherwise in a credit line to the material. If material is not included in the

article's Creative Commons license and your intended use is not permitted by statutory regulation or exceeds the permitted use, you will need to obtain permission directly from the copyright holder. To view a copy of this license, visit <http://creativecommons.org/licenses/by/4.0/>.

© The Author(s), under exclusive licence to CSI and USTC 2022