



|              |  |
|--------------|--|
| Title        | Peripheral platelet phagocytosis in an extremely low birth weight infant: a case report  |
| Author(s)    | Hatanaka, Daisuke; Ito, Kana; Fukama, Eisuke; Nomura, Tomoaki; Kusakari, Michiko; Takahashi, Hidehiro; Nakamura, Toshihiko; Takahashi, Naoto                         |
| Citation     | Fukushima Journal of Medical Science. 68(2): 129-134   |
| Issue Date   | 2022   |
| URL          | <a href="http://ir.fmu.ac.jp/dspace/handle/123456789/1876">http://ir.fmu.ac.jp/dspace/handle/123456789/1876</a>  |
| Rights       | © 2022 The Fukushima Society of Medical Science. This article is licensed under a Creative Commons [Attribution-NonCommercial-ShareAlike 4.0 International] license. |
| DOI          | 10.5387/fms.2022-03  |
| Text Version | publisher  |

This document is downloaded at: 2022-10-06T20:11:50Z



## Peripheral platelet phagocytosis in an extremely low birth weight infant : a case report

Daisuke Hatanaka<sup>1)</sup>, Kana Ito<sup>1, 2)</sup>, Eisuke Fukama<sup>1)</sup>, Tomoaki Nomura<sup>1)</sup>, Michiko Kusakari<sup>1)</sup>,  
Hidehiro Takahashi<sup>1)</sup>, Toshihiko Nakamura<sup>1)</sup>, and Naoto Takahashi<sup>3)</sup>

<sup>1)</sup>Department of Neonatology, Japanese Red Cross Musashino Hospital, Tokyo, Japan, <sup>2)</sup>Department of Pediatrics, National Defense Medical College Hospital, Saitama, Japan, <sup>3)</sup>Department of Pediatrics, Tokyo University School of Medicine, Tokyo, Japan

(Received January 11, 2022, accepted May 23, 2022)

### Abstract

A 768 g female neonate, born at 25 weeks' gestation, developed sepsis due to methicillin-resistant *Staphylococcus epidermidis* on day 14. Severe thrombocytopenia was observed, and hemophagocytic macrophages were identified in her peripheral blood smear. Cytokine profiles at the time of onset suggested that an inflammatory cytokine storm had activated lymphocytes and macrophages, leading to platelet phagocytosis. After administration of vancomycin for 14 days and immunoglobulin therapy, she improved without any complications. Considering the results of cytokine profiles, early intervention for infection may have prevented progression to hemophagocytic lymphohistiocytosis and reduced the severity of clinical symptoms.

**Key words :** extremely low birth weight infant, sepsis, thrombocytopenia, platelet phagocytosis, cytokine profile

### Introduction

Thrombocytopenia is one of the most frequent hematologic abnormalities in the neonatal period, with sepsis being among the most common causes of severe neonatal thrombocytopenia. We encountered a case of an extremely low birth weight infant who developed sepsis on day 14 and whose peripheral blood smear showed many images of platelet phagocytosis by macrophages. To the best of our knowledge, this is the first reported case of neonatal sepsis with hemophagocytic macrophages identified in a peripheral blood smear. We report the pathophysiology from the perspective of the infant's cytokine profiles at the time of onset.

### Case report

A 768 g female was delivered by emergency ce-

sarean section at 25 weeks' gestation, due to tocolysis failure. The baby was intubated immediately and admitted to our neonatal intensive care unit (NICU). Chest radiographic findings were compatible with respiratory distress syndrome, and artificial lung surfactant (Surfacten<sup>®</sup>, Mitsubishi Tanabe Pharma, Osaka, Japan) was administered. High-frequency oscillatory ventilation mode was selected as the initial ventilator setting. Empirical antibiotics (ampicillin and gentamicin) were administered for 3 days.

On day 14, the patient's condition worsened. Although the anterior fontanelle was flat and there were no abnormal cardiopulmonary findings, there was decreased activity and poor skin color. Blood examination revealed an increased inflammatory response and severe thrombocytopenia (Table 1). No coagulopathy was observed, nor did test results meet the diagnostic criteria for neonatal

---

Corresponding author : Daisuke Hatanaka E-mail : ndmc1077@yahoo.co.jp

©2022 The Fukushima Society of Medical Science. This article is licensed under a Creative Commons [Attribution-NonCommercial-ShareAlike 4.0 International] license.  
<https://creativecommons.org/licenses/by-nc-sa/4.0/>

Table 1. Laboratory values at the time of onset

| <i>Hemogram</i>               |                            | <i>Blood chemistry</i>            |             |
|-------------------------------|----------------------------|-----------------------------------|-------------|
| WBC                           | 10.5 × 10 <sup>3</sup> /μL | Protein                           | 3.4 g/dL    |
| Segmented neutrophils         | 39.0%,                     | Albumin                           | 1.5 g/dL    |
| Basophils                     | 2.0%,                      | Total bilirubin                   | 3.6 mg/dL   |
| Lymphocytes                   | 51.0%,                     | Direct bilirubin                  | 0.8 mg/dL   |
| Monocytes                     | 8.0%                       | LDH                               | 250 IU/L    |
| Hemoglobin                    | 12.6 g/dL                  | AST                               | 32 IU/L     |
| Platelets                     | 4 × 10 <sup>3</sup> /μL    | ALT                               | 30 IU/L     |
|                               |                            | CK                                | 39 IU/L     |
| <i>Coagulation parameters</i> |                            | Uric acid                         | 3.6 mg/dL   |
| PT                            | 15.0 sec                   | BUN                               | 40.9 mg/dL  |
| APTT                          | 48.0 sec                   | Cr                                | 0.96 mg/dL  |
| Fib                           | 357 mg/dL                  | Ferritin                          | 315.0 ng/mL |
| AT-III                        | 41%                        |                                   |             |
| D-dimer                       | <0.5 μg/mL                 |                                   |             |
| <i>Serological tests</i>      |                            | <i>Blood bacterial culture</i>    |             |
| CRP                           | 8.15 mg/dL                 | <i>Staphylococcus epidermidis</i> |             |

WBC : white blood cell, PT : prothrombin time, APTT : activated partial thromboplastin time, Fib : fibrinogen, AT-III : antithrombin-III, CRP : C-reactive protein, LDH : lactate dehydrogenase, AST : aspartate aminotransferase, ALT : alanine aminotransferase, CK : creatine kinase, BUN : blood urea nitrogen, Cr : creatinine

disseminated intravascular coagulation. However, many images of platelet phagocytosis by macrophages were observed in her peripheral blood smear (Figure 1). The patient was diagnosed as having clinical sepsis. Because *Enterobacter* and coagulase-negative staphylococcus were detected in nasal culture in the most recent result of once-a-week surveillance, these were assumed to be the causative organisms. She was thus started on intravenous administration of antibiotics (amikacin 8 mg/kg/day and vancomycin 20 mg/kg/day) and immunoglobulin therapy (200 mg/kg/day for 3 days). Platelet transfusion was also performed for 2 days.

On day 15, the blood culture was positive and the causative agent was found to be methicillin-resistant *Staphylococcus epidermidis* (MRSE), so antibiotic therapy was continued only with vancomycin, to which the organism was sensitive. After the start of medication, her C-reactive protein decreased steadily, and her platelet count also improved gradually (Figure 2). Vancomycin was administered for 14 days, after which the infection did not recur.

On day 46, the baby was extubated and the ventilation mode was switched to nasal continuous positive airway pressure that continued for a further 27 days. She was discharged on day 110 without sequelae.

## Methods

We measured serum cytokine levels with the BioPlex protein array system (Bio-Rad, Alameda, CA, USA), as described previously<sup>1)</sup>, using the BioPlex human cytokine 17-plex panel.

The results of cytokine profiles at onset and 12 hours after onset are shown in Table 2. The cytokine data at onset are before IVIG administration and data at 12 hours after onset are after IVIG administration. Abnormally high values were observed in 11 items, including tumor necrosis factor- $\alpha$  (TNF- $\alpha$ ), interleukin (IL)-6, interferon (IFN)- $\gamma$ , IL-2, IL-5, IL-10, IL-17, granulocyte colony stimulating factor, IL-8, monocyte chemoattractant protein-1 (MCP-1), and macrophage inflammatory protein-1 $\beta$  (MIP-1 $\beta$ ). Among these, levels of TNF- $\alpha$ , IL-6, IFN- $\gamma$ , IL-10, IL-8, and MCP-1 were strikingly high, whereas the level of granulocyte/macrophage colony stimulating factor was not high. Reference control values were obtained from Takahashi *et al*<sup>1)</sup>.

## Ethics

We obtained informed consent from the patient's parents and this study was approved by the ethics committee of the Japanese Red Cross Musashino Hospital (3090).

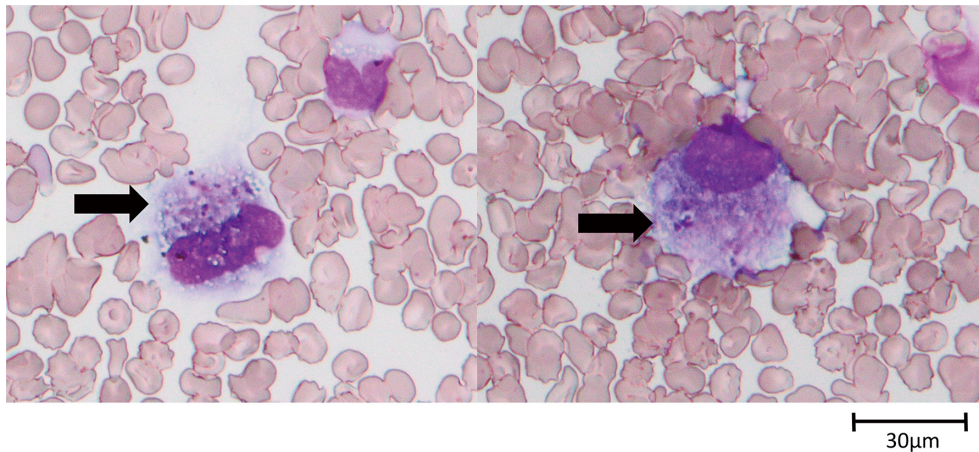


Fig. 1. Images of platelet-phagocytic macrophages in the peripheral blood smear (May-Grünwald Giemsa stain,  $\times 400$ ). Arrows indicate phagocytosed platelets in the cytoplasm of the macrophages.

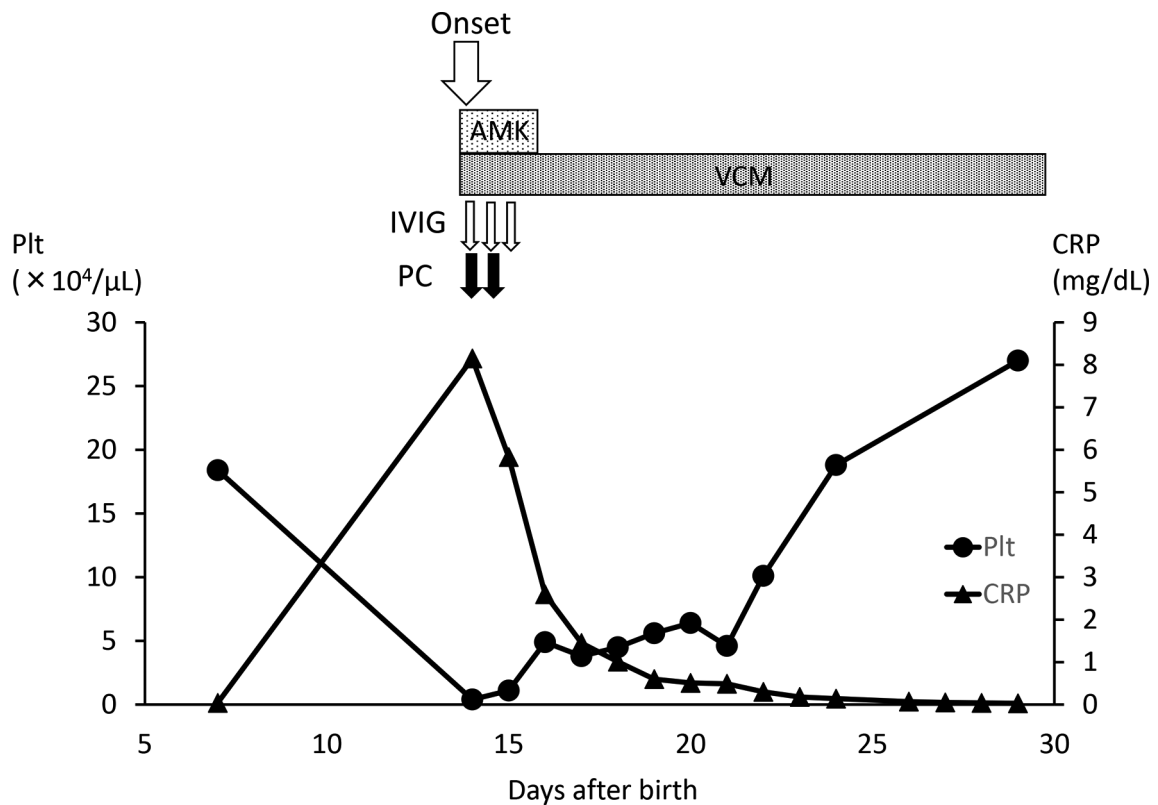


Fig. 2. Clinical course of the patient. ● Denotes platelets and ▲ denotes C-reactive protein (CRP). AMK : amikacin, IVIG : intravenous immunoglobulin, PC : platelet concentrate, Plt : platelets, VCM : vancomycin.

## Discussion

Thrombocytopenia is one of the most frequent hematologic abnormalities occurring in the neonatal period. It affects about 18-35% of all patients admitted to the NICU, with sepsis being among the most common cause of severe neonatal thrombocy-

topenia<sup>2,3</sup>). Thrombocytopenia is one of the most predictive, independent risk factors for sepsis-associated mortality in very low birth weight infants<sup>4</sup>). It may be due to suppression of hematopoiesis or increased consumption and destruction. However, the mechanism of thrombocytopenia in neonatal sepsis has not been clearly elucidated.

Table 2. Cytokine profiles at onset and 12 hours after onset

|                                   | At time of onset | 12 hours after onset | Control <sup>1)</sup><br>(CB, n=224)<br>mean±SD |
|-----------------------------------|------------------|----------------------|---|
| Proinflammatory cytokines (pg/mL) |                  |                      |   |
| TNF- $\alpha$                     | 2175.78          | 554.79               | 2.05±5.18                                       |
| IL-1 $\beta$                      | 5.17             | 1.59                 | 0.60±6.01                                       |
| IL-6                              | 227.53           | 45.8                 | 4.88±6.96                                       |
| Th1 cytokines (pg/mL)             |                  |                      |   |
| IFN- $\gamma$                     | 480.17           | 357.99               | 8.34±8.23                                       |
| IL-2                              | 56.82            | 17.56                | 9.49±12.6                                       |
| IL-12                             | 4.14             | 2.03                 | 3.03±5.56                                       |
| Th2 cytokines (pg/mL)             |                  |                      |   |
| IL-4                              | 1.54             | 0.56                 | 0.59±3.42                                       |
| IL-5                              | 28.81            | 12.77                | 0.65±2.24                                       |
| IL-10                             | 274.28           | 104.47               | 0.99±3.27                                       |
| IL-13                             | 0.81             | 0.56                 | 1.43±7.11                                       |
| Th17 cytokines (pg/mL)            |                  |                      |   |
| IL-17                             | 11.5             | 5.94                 | 1.97±3.82                                       |
| Growth factors (pg/mL)            |                  |                      |   |
| IL-7                              | 0.77             | <OOR                 | 2.10±2.23                                       |
| GM-CSF                            | 3.58             | 1.92                 | 15.1±5.24                                       |
| G-CSF                             | 123.27           | 113.59               | 10.1±6.93                                       |
| Chemokines (pg/mL)                |                  |                      |   |
| IL-8                              | 872.24           | 90.79                | 13.0±3.65                                       |
| MCP-1                             | 1563.95          | 733.29               | 68.0±2.69                                       |
| MIP-1 $\beta$                     | 1004.82          | 144.98               | 222.0±1.75                                      |

CB : cord blood, SD : standard deviation, OOR : out of range, TNF : tumor necrosis factor, IL : interleukin, IFN : interferon, GM-CSF : granulocyte/macrophage colony stimulating factor, G-CSF : granulocyte colony stimulating factor, MCP-1 : monocyte chemoattractant protein-1, MIP-1 $\beta$  : macrophage inflammatory protein-1 $\beta$ .

In the present case, many images of platelet phagocytosis by macrophages were observed in her peripheral blood smear, and increased destruction may have been the cause of her thrombocytopenia. The fact that platelets increased steadily after only two platelet transfusions likely proved that the cause of thrombocytopenia in this infant was not the suppression of platelet production.

Cytological evidence of hemophagocytosis is usually found in bone marrow films or in biopsies of other organs such as lymph nodes, liver, spleen, and skin<sup>5)</sup>. The observation of hemophagocytic macrophages in a peripheral blood smear is uncommon. Kaga *et al.*<sup>6)</sup> reported a neonate with neonatal toxic shock syndrome (TSS)-like exanthematous disease (NTED) complicated by hemophagocytic syndrome (HPS). In this case, the patient did not meet the diagnostic criteria of HPS, so-called hemophagocytic lymphohistiocytosis (HLH).<sup>7)</sup> Compared

with the cytokine profile measurement groups we have reported to date and HLH group (Table 3), this infant's TNF- $\alpha$  was strikingly high, as was her IL-6 and IFN- $\gamma$ . In addition, the values of three chemokines, IL-8, MCP-1, and MIP-1 $\beta$ , were also high. As we reported previously, even extremely low birth weight infants can suffer from cytokine storms<sup>12)</sup>. Considering the cytokine profile results, we speculated that a cytokine storm occurred with activation of lymphocytes and excessive and inappropriate activation of macrophages, which phagocytose platelets. We could find no further phagocytosis of macrophages in the peripheral blood smear 12 hours after the onset of the disease. Comparing the cytokine profiles at the two times, a significant decrease in inflammatory cytokines and chemokines occurred over a short period of time (Table 2), which may have led to a short stimulation of hemophagocytosis and a good recovery of the infant's platelet

Table 3. Serum cytokine concentrations in the patient at time of onset, and pediatric controls.

|                                   | Present patient | Lm pneumonia <sup>8)</sup> | NTED <sup>9)</sup><br>(mean±SD) | NLR <sup>10)</sup><br>(CB) | HLH <sup>11)</sup><br>(median and range) |
|-----------------------------------|-----------------|----------------------------|---------------------------------|----------------------------|--|
| Proinflammatory cytokines (pg/mL) |                 |                            |                                 |                            |  |
| TNF- $\alpha$                     | 2175.78         | 548.3                      | 25.9±62.5                       | 18.62                      | 3.2(1.0-27.9)                            |
| IL-1 $\beta$                      | 5.17            | 129.1                      | 2.9±5.4                         | 4.46                       |  |
| IL-6                              | 227.53          | 5798.6                     | 54.8±47.6                       | 94.13                      | 51.1(3.9-4472.6)                         |
| Th1 cytokines (pg/mL)             |                 |                            |                                 |                            |  |
| IFN- $\gamma$                     | 480.17          | 961.3                      | 132.5±211.7                     | 16.3                       | 1088.5(49.2-5000)                        |
| IL-2                              | 56.82           | 3.1                        | 89.2±166.2                      | <OOR                       | 3.1(1.0-51.0)                            |
| IL-12                             | 4.14            | 41.9                       | 9.0±16.2                        | <OOR                       |  |
| Th2 cytokines (pg/mL)             |                 |                            |                                 |                            |  |
| IL-4                              | 1.54            | 6                          | 3.0±5.6                         | 0.63                       | 3.0(1.0-103.8)                           |
| IL-5                              | 28.81           | 5.4                        | 32.0±27.7                       | <OOR                       |  |
| IL-10                             | 274.28          | 29.3                       | 1209.9±1289.5                   | 1.92                       | 623.5(15.6-5000)                         |
| IL-13                             | 0.81            | 5.5±11.7                   | 0.8                             |                            |  |
| Th17 cytokine (pg/mL)             |                 |                            |                                 |                            |  |
| IL-17                             | 11.5            | 86.3                       | 7.6±20.8                        | 5.15                       |  |
| Growth factors (pg/mL)            |                 |                            |                                 |                            |  |
| IL-7                              | 0.77            | 2.5                        | 6.2±5.6                         | 2.02                       |  |
| GM-CSF                            | 3.58            | 254.8                      | 37.8±104.1                      | <OOR                       |  |
| G-CSF                             | 123.27          | >2680.1                    | 47.1±68.6                       | 383.91                     |  |
| Chemokines (pg/mL)                |                 |                            |                                 |                            |  |
| IL-8                              | 872.241         | 1189.9                     | 38.8±28.9                       | 62.88                      |  |
| MCP-1                             | 1563.95         | 1537.8                     | 527.3±637.1                     | <OOR                       |  |
| MIP-1 $\beta$                     | 1004.82         | 252.4                      | 670.2±630.0                     | 156.43                     |  |

Lm : *Listeria monocytogenes*, NTED : neonatal toxic shock-like exanthematous disease, NLR : neonatal leukemoid reaction, CB : cord blood, HLH : hemophagocytic lymphohistiocytosis, SD : standard deviation, OOR : out of range, TNF : tumor necrosis factor, IL : interleukin, IFN : interferon, GM-CSF : granulocyte/macrophage colony stimulating factor, G-CSF : granulocyte colony stimulating factor, MCP-1 : monocyte chemoattractant protein-1, MIP-1 $\beta$  : macrophage inflammatory protein-1 $\beta$

count.

In adults, detection of peripheral hemophagocytosis is thought to reflect lethal clinical conditions<sup>13)</sup>. In the present infant, although thrombocytopenia was severe, her clinical course was not serious. In a report of pediatric HLH, IFN- $\gamma$  and IL-10 were highly elevated, and IL-6 was moderately elevated<sup>11)</sup>. While our infant's cytokine profiles were close to those of HLH, we speculate that she did not progress to HLH because inflammatory cytokines were lowered at an early stage due to early intervention for infection. The fact that inflammatory cytokines and chemokines were markedly reduced in a short period of time, as noted above, also supports this hypothesis.

In conclusion, this may be the first report of an extremely low birth weight infant with severe thrombocytopenia during sepsis and platelet phagocytosis on peripheral blood smear. When severe

thrombocytopenia is observed in neonatal sepsis, it is important to check the peripheral blood smear carefully ; measurement of the cytokine profile may help clarify the pathogenesis of the disease.

## Disclosure

The authors declare no conflicts of interest.

## Author contributions

D.H. wrote the manuscript. N.T. performed the cytokine measurements. K.I., E.F., T.N., M.K., H.T., T.N., and N.T. gave conceptual advice. All authors read and approved the final manuscript.

## References

1. Takahashi N, Uehara R, Kobayashi M, *et al.* Cyto-

- kine profiles of seventeen cytokines, growth factors and chemokines in cord blood and its relation to perinatal clinical findings. *Cytokine*, **49** : 331-337, 2010.
2. Castle V, Andrew M, Kelton J, Giron D, Johnston M, Carter C. Frequency and mechanism of neonatal thrombocytopenia. *J Pediatr*, **108**(5 Pt. 1) : 749-755, 1986.
  3. Brown RE, Rimsza LM, Pastos K, *et al.* Effects of sepsis on neonatal thrombopoiesis. *Pediatr Res*, **64**(4) : 399-404, 2008.
  4. Levit O, Bhandari V, Li FY, Shabanova V, Gallagher PG, Bizzarro MJ. Clinical and laboratory factors that predict death in very low birth weight infants presenting with late-onset sepsis. *Pediatr Infect Dis J*, **33**(2) : 143-146, 2014.
  5. Sloma I, Vincent H, Addebous A, Rivoisy C, Turhan AG, Michot JM. Haemophagocytic histiocyte in a peripheral blood film. *Br J Haematol*, **165**(2) : 163, 2014.
  6. Kaga A, Watanabe H, Miyabayashi H, Metoki T, Kitaoka S, Kumaki S. A term infant of neonatal toxic shock syndrome-like exanthematous disease complicated with hemophagocytic syndrome. *Tohoku J Exp Med*, **240** : 167-170, 2016.
  7. Henter JI, Horne A, Aricó M, *et al.* HLH-2004 : Diagnostic and therapeutic guidelines for hemophagocytic lymphohistiocytosis. *Pediatr Blood Cancer*, **48** : 124-131, 2007.
  8. Kawamata R, Takahashi N, Yada Y, Koike Y, Kono Y, Momoi MY. Cytokine profile of a premature infant with early onset listeriosis. *Pediatr Int*, **53** : 386-388, 2011.
  9. Takahashi N, Hasegawa H, Komiyama M, *et al.* Selective excretion of anti-inflammatory cytokine interleukin-10 in a superantigen-inducing neonatal infectious disease. *Cytokine*, **45** : 39-43, 2009.
  10. Nakamura T, Hatanaka D, Kashima K, *et al.* Serial changes of cytokine profiles and acute phase reactants in a male infant with neonatal leukemoid reaction and his mother. (in Japanese) *J Jpn Soc Perin Neon Med*, **54**(4) : 1098-1104, 2018.
  11. Xu XJ, Tang YM, Song H, *et al.* Diagnostic accuracy of specific cytokine pattern in hemophagocytic lymphohistiocytosis in children. *J Pediatr*, **160**(6) : 984-990, 2012.
  12. Saito M, Takahashi N, Ueda S, *et al.* Cytokine profile in a premature infant with systemic *Bacillus cereus* infection. *Pediatr Int*, **52** : e34-36, 2010.
  13. Kuwata K, Yamada S, Kinuwaki E, Naito M, Mitsuya H. An early indicator of advanced systemic inflammatory response syndrome/hemophagocytic syndrome. *Shock*, **25**(4) : 344-350, 2006.