



# Geophysical Research Letters<sup>®</sup>



## RESEARCH LETTER

10.1029/2021GL097232

## GPS Rates of Vertical Bedrock Motion Suggest Late Holocene Ice-Sheet Readvance in a Critical Sector of East Antarctica

Matt A. King<sup>1,2</sup> , Christopher S. Watson<sup>1,2</sup> , and Duanne White<sup>3,4</sup>

<sup>1</sup>Surveying and Spatial Sciences, School of Geography, Planning, and Spatial Sciences, University of Tasmania, Hobart, TAS, Australia, <sup>2</sup>The Australian Centre for Excellence in Antarctic Science, University of Tasmania, Hobart, TAS, Australia, <sup>3</sup>Centre for Applied Water Science, University of Canberra, Canberra, ACT, Australia, <sup>4</sup>The Australian Centre for Excellence in Antarctic Science, University of Canberra, Canberra, ACT, Australia

### Key Points:

- We present new Global Positioning System estimates of vertical bedrock motion in the Totten-Denman glacier region of East Antarctica
- Surface mass balance loading displacements are a dominant signal across Antarctica and here contribute  $\sim +1$  mm/yr of velocity bias (2010–2020)
- A significant portion of this sector of East Antarctica is undergoing long-term subsidence, consistent with Holocene ice-sheet advance

### Supporting Information:

Supporting Information may be found in the online version of this article.

### Correspondence to:

M. A. King,  
[Matt.King@utas.edu.au](mailto:Matt.King@utas.edu.au)

### Citation:

King, M. A., Watson, C. S., & White, D. (2022). GPS rates of vertical bedrock motion suggest late Holocene ice-sheet readvance in a critical sector of East Antarctica. *Geophysical Research Letters*, 49, e2021GL097232. <https://doi.org/10.1029/2021GL097232>

Received 1 DEC 2021

Accepted 7 FEB 2022

### Author Contributions:

**Conceptualization:** Matt A. King, Duanne White

**Formal analysis:** Matt A. King, Christopher S. Watson, Duanne White

**Methodology:** Matt A. King

**Visualization:** Matt A. King

**Writing – original draft:** Matt A. King

**Writing – review & editing:** Matt A. King, Christopher S. Watson, Duanne White

**Abstract** We investigate present-day bedrock vertical motion using new Global Positioning System (GPS) timeseries from the Totten-Denman glacier region of East Antarctica ( $\sim 77^{\circ}$ – $120^{\circ}$ E) where models of glacial isostatic adjustment (GIA) disagree, glaciers are likely losing mass, and few data constraints on GIA exist. We show that varying surface mass balance loading (SMBL) is a dominant signal, contributing random-walk-like noise to GPS timeseries across Antarctica. In the study region, it induces site velocity biases of up to  $\sim +1$  mm/yr over 2010–2020. After correcting for SMBL displacement and GPS common mode error, subsidence is evident at all sites aside from the Totten Glacier region where uplift is  $\sim 1.5$  mm/yr. Uplift near the Totten Glacier is consistent with late Holocene ice retreat while the widespread subsidence further west suggests possible late Holocene readvance of the region's ice sheet, in broad agreement with limited glacial geological data and highlighting the need for sampling beneath the current ice sheet.

**Plain Language Summary** The bedrock around the Antarctic Ice Sheet is moving in response to past and present changes in the weight of the ice sheet. Identifying the response to past ice-sheet changes (since  $\sim 20,000$  years ago) is important since it is an important correction to satellite measurements used to obtain present-day changes of the ice sheet, which are affecting sea levels. In this study, we describe a new set of GPS measurements of bedrock vertical motion in a poorly observed section of East Antarctica. This region includes the Totten and Denman glacier basins which contain enough ice to raise sea levels by more than 7 m. We show that recent variations in snowfall are large enough to deform the Earth by several millimeters per year. After considering this, and other sources of error, the GPS velocities suggest the bedrock is largely going down in this region, contrary to expectations. We suggest that this could be due to growth of the ice sheet over the last few thousand years before its recent switch to contributing overall to sea-level rise.

## 1. Introduction

Models of Antarctic glacial isostatic adjustment (GIA) show substantial differences, partly because of lack of data to constrain them (Martín-Español et al., 2016; Whitehouse et al., 2019). These differences represent uncertainty that affects estimates of ice-sheet mass change from satellite gravimetry and, to a lesser extent, satellite altimetry—both in terms of the ice-sheet wide contribution to sea-level change, as well the contribution over regional or basin-level scales (e.g., King et al., 2012).

Over the recent decade, Global Positioning System (GPS)-estimates of bedrock velocities have become increasingly important for testing the different GIA model predictions of bedrock displacement or as data to inform empirical estimates (e.g., Argus et al., 2014; Bevis et al., 2009; King et al., 2010; Liu et al., 2018; Sasgen et al., 2017). While many GPS sites have been deployed on bedrock in West Antarctica and the Antarctic Peninsula, much of East Antarctica remains sparsely observed (Whitehouse et al., 2019). So, while GIA models in this region show substantial differences our ability to validate them in East Antarctica is limited (Martín-Español et al., 2016).

In this study, we examine a new GPS data set of vertical bedrock displacement from a very sparsely observed sector of the East Antarctic Ice Sheet (EAIS). This sector spans from  $77^{\circ}$  to  $120^{\circ}$ E (approximately 2,000 km of the East Antarctic coastline), and includes the Totten and Denman glacier systems, two of the most vulnerable glacier systems in the EAIS. These glacier regions are of substantial interest as they each hold more than 3 m of sea-level equivalent in their drainage basins and have both shown evidence of recent dynamic change (Brancato

© 2022. The Authors.

This is an open access article under the terms of the [Creative Commons Attribution License](https://creativecommons.org/licenses/by/4.0/), which permits use, distribution and reproduction in any medium, provided the original work is properly cited.

et al., 2020; X. Li et al., 2016; Miles et al., 2021; Mohajerani et al., 2018; Roberts et al., 2017). We compare the GPS vertical velocities to a range of models of GIA after paying particular attention to short-term processes that bias observations and/or increase noise, in particular the effects of surface mass balance loading (SMBL) displacements, and then consider the consequences for Holocene ice history.

## 2. Data Sets and Analysis

### 2.1. Surface Mass Balance Loading Displacements (1979–2020)

Obtaining accurate and precise GPS velocities or timeseries that reflect long-term bedrock motion requires correction for elastic deformation of the solid Earth due to contemporaneous surface loading changes; in Antarctica largely atmospheric and snow/ice surface mass variations (Santamaría-Gómez & Mémin, 2015; Thomas et al., 2011). Characterization of ice loading displacement is challenging due to uncertainties in input data sets (such as converting satellite altimeter ice elevation change to mass) or circularity in reasoning (using satellite gravimetry data which themselves depend on GIA models). With few exceptions (e.g., Koulali et al., 2022; Martín-Español et al., 2016) these corrections have tended to be in the form of multi-year or multi-decadal linear rates of displacement (e.g., Argus et al., 2014; Thomas et al., 2011; Wolstencroft et al., 2015) with a focus on regions of substantial dynamic glacier change (Barletta et al., 2018; Nield et al., 2014; Samrat et al., 2020).

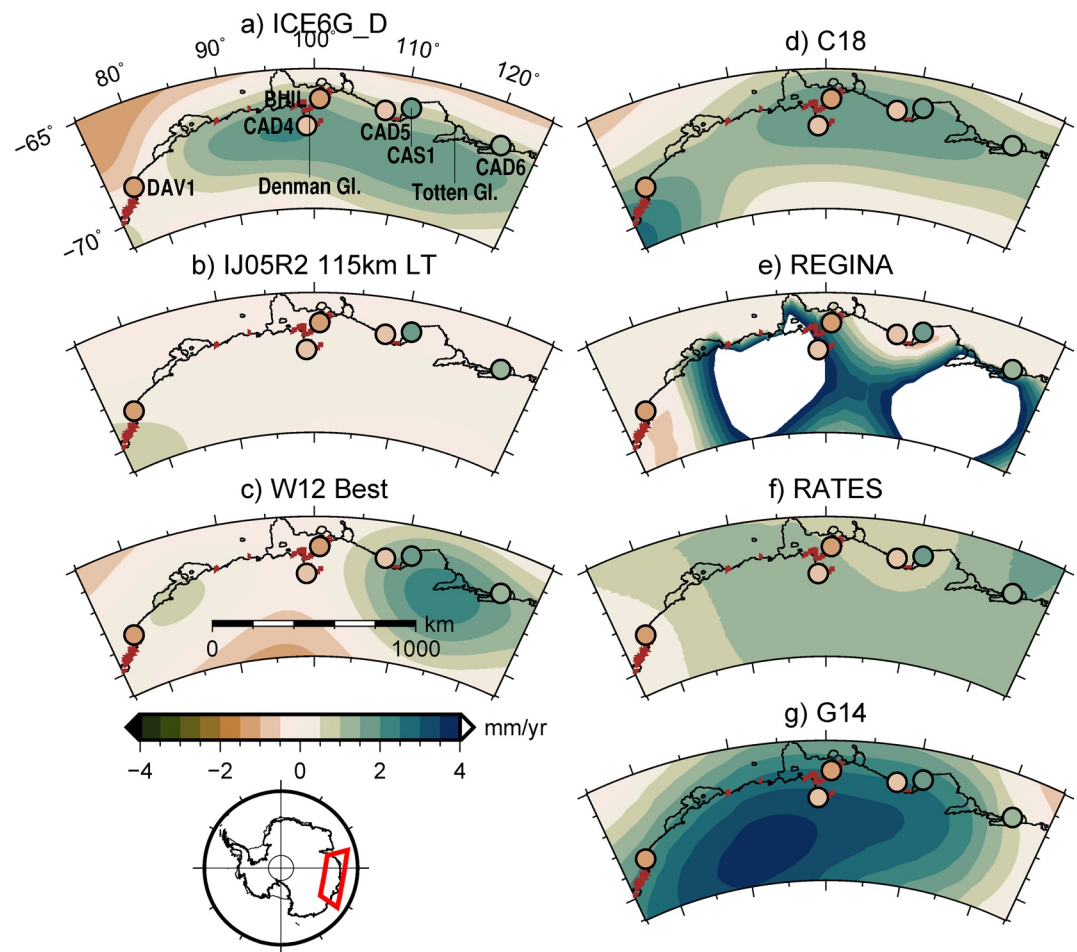
However, SMB time series exhibit a power-law like character in Antarctica over years to centuries (King & Watson, 2020), suggesting that subsequent displacements may produce biases in bedrock velocities and affect the interpretation of GIA (Koulali et al., 2022).

We model SMBL using SMB anomalies based on the regional model MAR v3.11 (35 km horizontal resolution; Kittel et al., 2021) and, for comparison, RACMO2.3p2 (27 km horizontal resolution; van Wessem et al., 2018). At the time of analysis MAR outputs spanned the period January 1979 to September 2020 and RACMO outputs spanned the period January 1979 to August 2018, and we work with monthly model outputs in both cases. We adopt MAR as the primary data set due to its extended period. To compute SMB mass timeseries, we first interpolated the input grids to a consistent 5 km resolution and computed SMB anomalies to the mean rate by subtracting the mean SMB per grid cell over the respective full data periods. Using SMB anomalies is necessary as SMB models, unlike hydrological models, only consider the mass change at the top surface of the ice sheet and do not consider mass discharge due to glacier flow. Using anomalies assumes the long-term inputs are entirely balanced by equivalent outputs; we address this further below. We then applied a consistent land mask, defined as the limit of the grounded ice sheet (Haran et al., 2005), cumulatively summed the timeseries, and converted to the mass to equivalent cylinders of 2.5 km radius.

We used these mass timeseries as inputs into the REAR v1.0 software (Melini et al., 2015) to compute elastic loading displacements in a center-of-solid Earth (CE) reference frame. We used the AK135 continental Earth model (Kennett et al., 1995) represented by 89-layers (2 km depth layers for the top 60 km then 50 km layers below), and computed elastic load Love numbers using the E-CL0V3RS software to degree 35,000 (Barletta et al., 2006). Using alternative Earth models produced differences  $< \sim 0.5$  mm (Figure S1 in Supporting Information S1); AK135 was chosen due to its similarity in this region with the recent three-dimensional model of Lloyd et al. (2020). We interpolated the model outputs to the GPS daily time series epochs.

### 2.2. Altimeter Timeseries (2003–2019)

For comparison, we also computed timeseries of elastic displacement based on satellite altimeter ice sheet volume change data (Shepherd et al., 2019). These data have the advantage of including the effects of both SMB and ice discharge but introduce systematic uncertainty, notably the conversion from volume to mass. We commenced with a merged CryoSat-2 and Envisat 5 km gridded elevation change product with 140-day sampling over January 2003 to February 2019 that covers the East Antarctic Ice Sheet (EAIS; Shepherd et al., 2019). Biases between Envisat and CryoSat-2 were already estimated and removed on a cell-by-cell basis to produce continuous timeseries. We applied the same land mask as for the SMB models and filled gaps using an efficient method based on discrete cosine transforms (Garcia, 2010; Wang et al., 2012). Volume changes were converted to mass changes using the simple approach of Shepherd et al. (2019), with elevation changes having the density of snow ( $350 \text{ kg/m}^3$ ) or ice ( $900 \text{ kg/m}^3$ ) depending on a pre-defined mask. In this region, only the Totten Glacier was



**Figure 1.** GPS site locations and bedrock uplift rates in the study region. GPS sites are labeled and estimated uplift rates are shown as circles. GPS velocities were determined following time series correction for common mode error and surface mass balance loading changes. The background shading is the predicted uplift rates from conventional forward (left) and empirical (right) glacial isostatic adjustment models. Bedrock locations are shown in brown and the ice grounding line and ice shelf fronts in black. All model predictions and GPS estimates are in a common mode frame (see text).

within the ice mask, although we test applying a density of ice also for the Denman Glacier. We used the same approach for computing elastic displacements from the altimeter derived data set as for the SMBL.

### 2.3. GPS Timeseries (2006–2020)

We focus on six GPS sites in the sector of East Antarctica in the region of the Totten and Denman glaciers shown in Figure 1. Two of the sites are long-running International GNSS Service sites (DAV1 and CAS1) and one is an extended record of a site deployed since December 2006 (BHIL). Three of the sites are new and were deployed in December 2015 (CAD4, CAD5) or December 2016 (CAD6). We considered data spanning December 2006 to January 2019 (the start date was chosen to align with the start of the BHIL timeseries). Further site details may be found in Table S1 in Supporting Information S1. Opportunity for GPS deployment on bedrock is limited in this region, especially away from the coast, as indicated by the distribution of rock outcrops shown in brown in Figure 1. As such, the newly acquired data from CAD4, CAD5, and CAD6, and extended data from BHIL, CAS1, and DAV1, add rare and important constraints on GIA models.

We analyzed raw GPS data using GIPSY v6.4 software and NASA Jet Propulsion Laboratory orbit and clock products (repro3) in the IGS14 realization of ITRF2014 (Altamimi et al., 2016). We removed the effects of atmospheric pressure loading (ATML) from the time series using displacements in the center-of-figure (CF) frame based on the MERRA-2 atmospheric model available at [massloading.net](http://massloading.net). GPS time series are shown in

Figure S2 in Supporting Information S1. To provide context, we also compute elastic loading due to surface loading (ATML, SMBL, and altimetry) at 259 existing or previous GPS sites across the entirety of Antarctica and its offshore islands.

We removed common mode error (CME) from the GPS timeseries using methods described in Text S1 in Supporting Information S1. In brief, we made use of the only long-running and stable GPS site in this region (DAV1) noting that CAS1 is subject to time-variable dynamical changes in the Totten Glacier. We decomposed the DAV1 timeseries using complete ensemble empirical mode decomposition with adaptive noise (CEEMDAN; Colominas et al., 2014; Torres et al., 2011) after removing SMBL and ATML and correcting for offsets related to hardware changes. We took the non-linear, low frequency components of the decomposition and subtracted that as CME from all timeseries. We return to the CME in the discussion. The improved linearity of BHIL timeseries after applying CME (and SMBL) at BHIL is clear in Figure S4 in Supporting Information S1.

To compute GPS site velocities and their uncertainties (Figure S3 in Supporting Information S1) we used HECTOR v1.9 software (Bos et al., 2013) as described in Text S1 in Supporting Information S1.

#### 2.4. GIA Models

We compare the GPS velocities with seven different GIA models: three conventional forward models and four empirical models. The forward models are ICE6G\_D (VM5a Earth model; Argus et al., 2014; Peltier et al., 2018), IJ05R2 with 115 km lithosphere Earth model (Ivins et al., 2013), and W12 ('Best' Earth model; Whitehouse et al., 2012). The four empirical models are RATES (Martín-Español et al., 2016), G14 (Gunter et al., 2014), REGINA (Sasgen et al., 2017), and C18 (Caron et al., 2018). C18 and RATES were supplied with formal uncertainties, while the other models were not.

The seven different predictions of present-day GIA uplift are shown in Figure 1, including the conventional forward models (left column) and empirical models (right column). Models not in a CM frame were shifted from a CE frame by adding  $-0.38$  mm/yr based on the estimate of Sun and Riva (2020); this correction has a formal uncertainty (2-sigma) of 0.09 mm/yr. Of the models, IJ05R2, ICE6G\_D and W12 were originally in CE. We note that there may be some inconsistency between the different realizations of CM, notably for G14 where the rates are relative to a region of low precipitation in central East Antarctica.

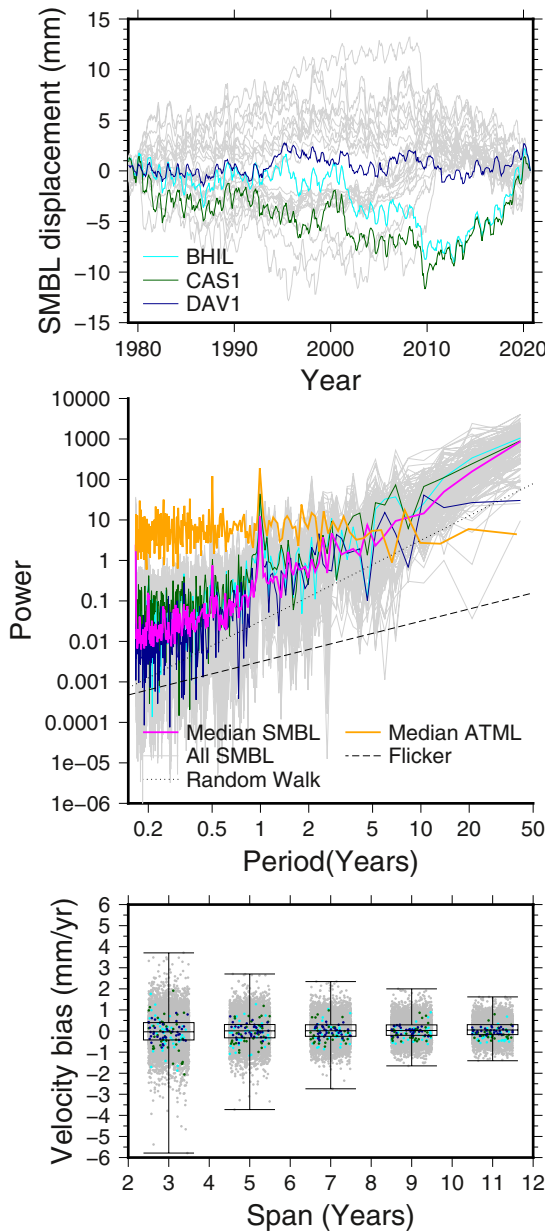
Comparison of the different GIA predictions (Figure 1) reveals variation between models in terms of the mean uplift rate which exceeds 5 mm/yr, but also distinct differences in spatial patterns within this region. For the forward models this reflects a lack of Holocene ice history data from this region and uncertainty in the Earth rheology, while for the data-informed models it reflects, in part, differences in methodology and data corrections such as firn densification (Whitehouse et al., 2019). The REGINA model shows higher levels of variability, presumably associated with its basis in spherical harmonics and with little data to constrain that solution in this region; hence we focus mostly on the other models hereon.

### 3. Results

#### 3.1. Surface Mass Balance Loading Displacements

Timeseries of modeled SMBL displacement are plotted in Figure 2 (top) for illustrative sites CAS1 (green), DAV1 (blue), and BHIL (cyan) and they show ranges of up to 12 mm at CAS1 and BHIL but are smaller at DAV1. For context we also show modeled SMBL for a random subset of sites from across Antarctica (gray lines), which show substantial variation over all periods, ranging up to  $\sim\pm 15$  mm. Periods of rapid change in displacement are evident from time-to-time, and these are especially associated with large accumulation events; the most rapid changes will not be evenly distributed around zero as large negative SMB events are not yet common in Antarctica.

The respective power-spectra are shown in Figure 2 (middle) and reveal that the timeseries have a power-law like character, with an approximately linear increase in power with period in log-log space, although tapering off at long periods for DAV1. The power spectra for SMBL displacement at CAS1 and BHIL and the median power spectrum computed across all Antarctic sites (magenta) has a slope close to that of random walk noise (spectral



**Figure 2.** Modeled bedrock vertical displacements due to surface mass balance loading anomalies from MAR. All panels highlight BHIL (cyan), DAV1 (blue), and CAS1 (green). (Top) Timeseries of displacements at a random subset of GPS sites. (Middle) Power spectra (log-log scale) for all GPS locations (gray lines) and with the median spectrum (pink). The median spectrum for modeled ATML displacements at the same locations is also shown (orange). The spectral slope for pure flicker and random walk noise are also shown. (Bottom) biases introduced in velocities at all GPS sites computed over different data spans and periods. Individual results are shown as gray dots and box plots show the median, inter-quartile range, and the whiskers show the full range of the data.

index of  $-2$ ). The median spectrum for the RACMO-based timeseries is like that of MAR but with slightly reduced power at the longest periods (closer to pure random walk).

Figure 2 (lower) shows the velocity biases that would be introduced if the SMBL displacements in Figure 2 (upper) were not corrected, as a function of time series duration, obtained by sub-sampling the modeled displacements with steps of 1 year. Biases at CAS1 and BHIL can exceed 1 mm/yr, and this includes the data period considered here where mean biases of 1 mm/yr are sustained over  $\sim 2010$ – $2020$ , and faster since  $\sim 2016$  (Figure 2, top).

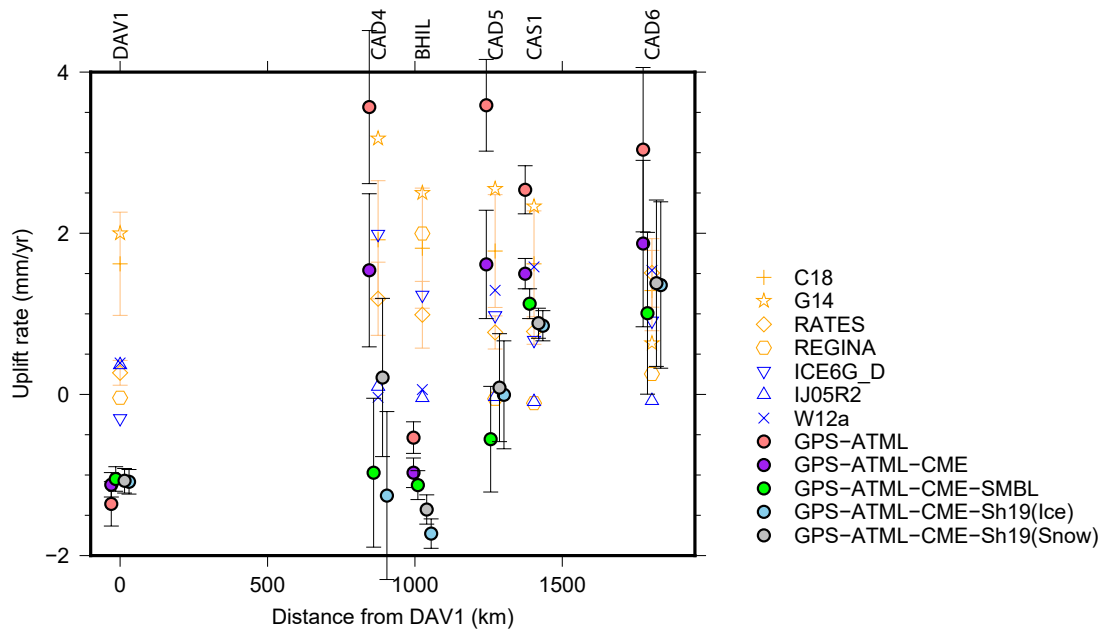
### 3.2. GPS Velocities in the Denman-Totten Glacier Region

The GPS site vertical velocities, computed after correcting for ATML, SMBL (MAR), and CME, are shown in Figure 1, plotted over the different GIA predictions. Our estimates of bedrock motion are universally low, with highest uplift rates of  $\sim 1.5$  mm/yr near Totten Glacier (CAS1 and CAD6) or subsidence of  $\sim 0.5$ – $1.7$  mm/yr around the Denman Glacier (CAD4, BHIL, and CAD5) and DAV1. We show these and their uncertainties in Figure 3 (green circles). We also show GPS velocities using time series corrected using one of the two different altimetry-based elastic corrections instead of the SMBL model: using the density of snow for Denman Glacier (gray circles) or the density of ice (light blue circles). While differences are evident between the different velocity solutions, the broad pattern remains the same. We adopt the SMBL-based GPS velocities as the primary solution hereon due to the presence of space-time noise in the altimeter data and uncertainties in converting altimeter volume change to mass, and with the knowledge that any unmodeled ice dynamic loss will shift the corrected GPS velocities toward the negative.

The weighted root-mean-square (WRMS) and weighted mean differences between the observations and models are given in Table S2 in Supporting Information S1. The best statistical agreement using WRMS is with W12, closely followed by IJ05R2. All models other than W12 have most of their variation orientated north-south and hence either match the signal in the eastern or western sectors but not both. The weighted-mean difference reveals the consistent bias in uplift rates between models and the velocities of  $\sim 1$  mm/yr for IJ05R2 and W12 and up to  $\sim 3$  mm/yr for the other models. Including the C18 and RATES uncertainties noticeably reduces the WRMS and weighted-mean, with RATES values approaching those of the best forward models.

We also illustrate in Figure 3 the effect of not applying the CME correction or any form of ice mass loading model. The GPS velocities without either correction are shown as red circles with corresponding uncertainties (see also Figure S3 in Supporting Information S1). Aside from DAV1, these show rates of uplift of  $2.5$ – $3.5$  mm/yr, generally above the prediction from all models but closest to G14. Removing CME from DAV1 (or any other correction) makes almost no difference to the estimated velocity there, with clear and consistent subsidence of  $\sim 1.0$  mm/yr that is well below all model predictions. However, at the other sites, the impact of removing the CME is to reduce uplift rates by  $\sim 0.5$ – $2.0$  mm/yr (Figure 3, purple circles).

The effect of modeling and removing ice mass loading is to reduce the velocities further, reflecting the negative SMB anomaly over much of the data period (Figure 2, top). The underlying time series effects of the different modeling approaches is illustrated in Figure S4 in Supporting Information S1 for BHIL which shows, without these two corrections, substantial



**Figure 3.** Bedrock uplift rates in the region of the Denman and Totten Glaciers expressed as distance (approximately east) from DAV1. GPS-estimated uplift rates are shown as circles with different corrections applied to the GPS timeseries. Symbols at each site are arbitrary offset horizontally for clarity. Uncertainties are 1-sigma and shown for the GPS, C18, and RATES estimates. Sh19() refers to the Shepherd et al. (2019) altimetry with the density of ice or snow for the Denman Glacier.

non-linearity. Both SMBL and altimetry solutions indicate BHIL subsidence after the application of these corrections, although the timeseries is more linear in the former case. Using the altimetry-derived loading that uses the density of ice for the Denman Glacier change further increases the rate of subsidence at BHIL and, especially, CAD4 (Figure 3) with negligible effect at other sites.

In all cases, the velocities based on timeseries with CME and SMBL (MAR) displacements modeled have either the smallest or second smallest velocity uncertainty (Table S2 in Supporting Information S1) suggesting that important timeseries noise is being removed in these solutions. Comparing modeled displacements based on MAR and RACMO shows good agreement since 2010 but differences before then (Figure S4 in Supporting Information S1), and so this introduces some uncertainty into solutions based on SMBL corrections.

#### 4. Discussion

Our finding of long-term subsidence in the sector of coastal East Antarctica west of Totten Glacier builds on previous studies that have analyzed earlier records from DAV1 and BHIL, and MAW1 650 km to the west of DAV1, indicating subsidence or marginal amounts of uplift along this coastline (Argus et al., 2014; Hammond et al., 2021; Martín-Español et al., 2016; Thomas et al., 2011). Liu et al. (2018) suggested uplift of  $\sim 1.6$  mm/yr at DAV1 over the shorter period 2010–2014 (inclusive) but analysis of longer series (2006–2019) does not support this (Figure S2 in Supporting Information S1), perhaps because of short-period SMBL variability. Our results provide clear evidence for subsidence along this coastline with both DAV1 and BHIL showing statistically significant subsidence, even before CME and ice mass loading corrections, which persist after these corrections are applied. While not the focus of our study, MAW1 shows clear subsidence of  $\sim 1.2$ – $1.6$  mm/yr in our analysis (regardless of the correction choices; Figure S2 in Supporting Information S1). The addition of CAD4 and CAD5 provide further evidence that subsidence is occurring along substantial transects of this coastline once their series are corrected for CME and ice surface loading. The CAD4 finding is significant as it is the first inland site,  $\sim 150$  km from the coastline, for which a velocity is available in this sector of East Antarctica.

Our findings depend, to some extent, on the CME correction employed. CME is commonly removed from GPS timeseries (e.g., Dong et al., 2006), including those from Antarctica (W. Li et al., 2019; Liu et al., 2018), but its computation typically uses a network of sites over a region spanning hundreds to thousands of kilometers across the region of interest. Applying a CME correction removes common error that is assumed to be systematic and

of non-geophysical origin. Our analysis demonstrates coherence between DAV1 and BHIL over  $\sim 1,000$  km after removal of ATML and where very different SMBL displacements exist. This demonstrates that CME is a real and important signal to consider in precise point positioning (PPP) solutions in Antarctica, especially for short or patchy time series.

We note that while the GPS velocities are subject to reference frame uncertainty, it is unlikely to explain the observed subsidence, given the uncertainty of the origin of ITRF2014 maps to  $\pm 0.31$  mm/yr (1-sigma) in the vertical component in this region (Riddell et al., 2017). Our comparison of GPS and model velocities also relies, in some cases, on the geocentre (CE-CM) translation we adopt. Here we use the values of Sun and Riva (2020) but geocentre estimates are uncertain and technique specific. Of the few published estimates, some of the largest are those of Métivier et al. (2020) which would reduce the forward-modeled uplift rates by a further 0.58 mm/yr from the value we used (the total correction would be  $0.96 \pm 0.12$  mm/yr [1-sigma]). However, this would still not explain the observed differences entirely and would not affect the comparison to empirical solutions already in a realization of CM. As such, it is unlikely that differences in frame origins can resolve the differences we see.

Our results, therefore, suggest that present-day subsidence may not be unusual along this  $\sim 1,800$  km stretch of coastline in East Antarctica. In the Denman Glacier region this disagrees with the GIA models examined and runs contrary to an understanding of monotonic retreat of the ice sheet in this region from the Last Glacial Maximum (LGM) to present-day that is embedded within forward models. Regional paleoenvironmental records evidence Holocene ice margin fluctuations that are consistent with the GPS-derived pattern of modern-day subsidence and uplift. At the Windmill Islands, near Casey (CAS1), moraines record a retreat of nearby Law Dome by  $\sim 1$  km during the late Holocene (Goodwin, 1993). In contrast, at Bunger Hills (BHIL) and in the Davis (DAV1) region, Holocene moraines are restricted to at or near the modern ice margin (Colhoun & Adamson, 1992; White et al., 2009). Further, epishelf lake records at Bunger Hills suggest late Holocene ice re-advance (Berg et al., 2020) that may be driving present-day subsidence. In the Davis region, weathered clasts in marginal shear moraines at Vestfold Hills (Gore et al., 1994) indicate exposure and weathering of the landscape inboard of the present-day position followed by ice sheet re-advance. The timing of ice sheet re-advance is less clear, but may have been co-incident with a local late Holocene cool period recorded in sediments in marine inlets at Vestfold Hills (McMinn et al., 2001) and at Rauer Group (Berg et al., 2010).

Geological evidence of relative sea level (RSL) at Vestfold and Bunger Hills has commonly been interpreted as indicating Holocene uplift, but is not inconsistent with late-Holocene subsidence. While there is a clear picture of relative sea level fall from an early Holocene RSL highstand of  $\sim 10$  m above sea level (e.g., Colhoun & Adamson, 1992; Zwart et al., 1998), raised beach deposits and isolation basins only record RSL fall during the mid-Holocene, and there are no records that conclusively place RSL above the present day during the past 1000–2000 years. RSL records below sea level have not been thoroughly examined, but freshwater sediments deposited in Izvilistaya Inlet at Bunger Hills (sill height 3 m below sea level, Berg et al., 2020) are consistent with a RSL lowstand since  $\sim 1.7$  ka BP, indicative of limited late Holocene subsidence.

The late Holocene ice readvance advocated for here is not included in forward models of Antarctic GIA. This potentially missing ice history will not, however, contribute to the disagreement with purely empirical solutions of RATES, REGINA, and G14. That each of these solutions shows very different signal from one another and from the forward models suggests that the techniques themselves require further development in this region, although we note that in other places in Antarctica there is very good agreement between some of these solutions and GPS uplift rates (Martín-Español et al., 2016; Wolstencroft et al., 2015). This regional disparity suggests that localized signal is causing an issue in this region—perhaps because of SMB variability in this region and its impact on measurements of ice sheet volume change used in empirical solutions.

Lower rates of uplift than predicted by published models of GIA, or indeed subsidence, will alter estimated rates of mass change based on GRACE and GRACE Follow-On data. Notably, subsidence instead of uplift in this region will generally change the sign of the GIA correction for GRACE and lead to reduced estimates of mass loss (or greater gain), but not alter the non-linear parts of the timeseries. The hypothesis that increased ice loading during the late Holocene is the origin of the subsidence can be tested with new forward GIA models. Until those experiments are performed, GRACE analysis focusing on Totten or Denman glacier systems should use the W12 or IJ05R2 GIA models but with caution noting the biases present.

## 5. Conclusions

We report on a new GPS data set in a critical sector of East Antarctica, surrounding the Totten and Denman glacier systems, which have few geodetic or geological constraints on bedrock uplift or ice history, as are relevant to informing or validating models of glacial isostatic adjustment.

We first demonstrate the importance of correcting GPS time series for elastic deformation associated with fluctuations in surface mass balance, with effects in this region reaching +1 mm/yr over 10 years (see also Koulali et al., 2022). At GPS sites across Antarctica the modeled surface mass balance loading displacements show an approximately random-walk spectral signature, with displacements of several mm over a few months and sustained displacement rates over several years. This is an important effect to consider at all GPS sites in Antarctica (we discuss this further in Supporting Information S1).

We then show that, after correction for GPS common mode error and the effects of ice mass loading changes, the bedrock is most likely subsiding in the region from  $\sim 77^\circ$  to  $107^\circ$ E, including the Denman Glacier system. This is contrary to all current GIA models but is consistent with unmodeled Holocene readvance of the ice sheet in this region. Around the Totten Glacier we find modest uplift of  $\sim 1.5$  mm/yr, consistent with an understanding of late Holocene ice sheet retreat in this region.

Our analysis therefore provides new and important constraints on models of glacial isostatic adjustment, and we add new geodetic evidence to the hypothesis that much of this region may have experienced ice sheet readvance during the late Holocene.

## Conflict of Interest

The authors declare no conflicts of interest relevant to this study.

## Data Availability Statement

Raw GPS data are available at <https://data.gnss.ga.gov.au/>, or <http://dx.doi.org/doi:10.26179/xd2t-0x18>. The AK135 continental model was sourced from <http://rses.anu.edu.au/seismology/ak135/ak135f.html>. All data relevant to the analysis, including SMB data, GPS time series, and loading displacement time series, are available at <http://rdp.utas.edu.au/metadata/0f9d9776-f858-421b-b92c-de0ab350d4a3>.

## References

- Altamimi, Z., Rebischung, P., Métivier, L., & Collilieux, X. (2016). ITRF2014: A new release of the International Terrestrial Reference Frame modeling nonlinear station motions. *Journal of Geophysical Research: Solid Earth*, *121*(8), 6109–6131. <https://doi.org/10.1002/2016JB013098>
- Argus, D. F., Peltier, W. R., Drummond, R., & Moore, A. W. (2014). The Antarctica component of postglacial rebound model ICE-6G\_C (VM5a) based on GPS positioning, exposure age dating of ice thicknesses, and relative sea level histories. *Geophysical Journal International*, *198*(1), 537–563. <https://doi.org/10.1093/gji/ggu140>
- Barletta, V. R., Bevis, M., Smith, B. E., Wilson, T., Brown, A., Bordonni, A., et al. (2018). Observed rapid bedrock uplift in Amundsen Sea embayment promotes ice-sheet stability. *Science*, *360*(6395), 1335–1339. <https://doi.org/10.1126/science.aao1447>
- Barletta, V. R., Ferrari, C., Diolaiuti, G., Carnielli, T., Sabadini, R., & Smiraglia, C. (2006). Glacier shrinkage and modeled uplift of the Alps. *Geophysical Research Letters*, *33*(14). <https://doi.org/10.1029/2006GL026490>
- Berg, S., Melles, M., Gore, D. B., Verkulich, S., & Pushina, Z. V. (2020). Postglacial evolution of marine and lacustrine water bodies in Bunge Hills. *Antarctic Science*, *32*(2), 107–129. <https://doi.org/10.1017/S0954102019000476>
- Berg, S., Wagner, B., Cremer, H., Leng, M. J., & Melles, M. (2010). Late quaternary environmental and climate history of Rauer Group, East Antarctica. *Palaeogeography, Palaeoclimatology, Palaeoecology*, *297*(1), 201–213. <https://doi.org/10.1016/j.palaeo.2010.08.002>
- Bevis, M., Kendrick, E., Smallley, R., Dalziel, I., Caccamise, D., Sasgen, I., et al. (2009). Geodetic measurements of vertical crustal velocity in West Antarctica and the implications for ice mass balance. *Geochemistry, Geophysics, Geosystems*, *10*, Q10005. <https://doi.org/10.1029/2009gc002642>
- Bos, M. S., Fernandes, R. M. S., Williams, S. D. P., & Bastos, L. (2013). Fast error analysis of continuous GNSS observations with missing data. *Journal of Geodesy*, *87*(4), 351–360. <https://doi.org/10.1007/s00190-012-0605-0>
- Brancato, V., Rignot, E., Miiillo, P., Morlighem, M., Mouginot, J., An, L., et al. (2020). Grounding line retreat of Denman glacier, East Antarctica, measured with COSMO-SkyMed radar interferometry data. *Geophysical Research Letters*, *47*(7), e2019GL086291. <https://doi.org/10.1029/2019GL086291>
- Caron, L., Ivins, E. R., Larour, E., Adhikari, S., Nilsson, J., & Blewitt, G. (2018). GIA model statistics for GRACE hydrology, cryosphere, and ocean science. *Geophysical Research Letters*, *45*(5), 2203–2212. <https://doi.org/10.1002/2017GL076644>
- Colhoun, E. A., & Adamson, D. A. (1992). *Raised beaches of the Bunge Hills, Antarctica*. Antarctic Division, Department of the Arts, Sport, the Environment and Territories.
- Colominas, M. A., Schlotthauer, G., & Torres, M. E. (2014). Improved complete ensemble EMD: A suitable tool for biomedical signal processing. *Biomedical Signal Processing and Control*, *14*, 19–29. <https://doi.org/10.1016/j.bspc.2014.06.009>

## Acknowledgments

The authors thank the Editor and anonymous reviewers for their helpful remarks. This work was supported by the Australian Research Council (ARC) Special Research Initiative for Antarctic Gateway Partnership (Project ID SR140300001), ARC Australian Centre for Excellence in Antarctic Science (Project ID SR200100008), and from the Australian Government's Australian Antarctic Program (Project 4318). The latter grant supported the deployment and maintenance of the CAD sites within the CaDaGIA network and the maintenance of BHIL, CAS1, DAV1, and MAW1 are part of the International GNSS Service network and are operated by Geoscience Australia. This paper is a contribution to the Scientific Committee for Antarctic Research (SCAR) GIANT REGAIN project. The authors acknowledge the efforts of many people to deploy and maintain the GPS sites, with fieldwork led by Sue Cook, Tobias Staal and Ben Galton-Fenzi. The authors thank Michiel van den Broeke and Chris Kittel for making SMB model outputs available, Andrew Shepherd and Lin Gilbert for making the altimetry data available, and Leonid Petrov for providing ATML data. Roelof Rietbroek proposed the algorithm for estimating offsets with local data only. The authors thank Valentina Barletta and Andrea Bordonni for providing the E-CLOV3RS software. The authors thank NASA JPL for making GIPSY and associated satellite orbit and clock products available. Open access publishing facilitated by University of Tasmania, as part of the Wiley - University of Tasmania agreement via the Council of Australian University Librarians.



- Dong, D., Fang, P., Bock, Y., Webb, F., Prawirodirdjo, L., Kedar, S., & Jamason, P. (2006). Spatiotemporal filtering using principal component analysis and Karhunen-Loeve expansion approaches for regional GPS network analysis. *Journal of Geophysical Research*, *111*, B03405. <https://doi.org/10.1029/2005jb003806>
- García, D. (2010). Robust smoothing of gridded data in one and higher dimensions with missing values. *Computational Statistics & Data Analysis*, *54*(4), 1167–1178. <https://doi.org/10.1016/j.csda.2009.09.020>
- Goodwin, I. D. (1993). Holocene deglaciation, sea-level change, and the emergence of the Windmill islands, Budd coast, Antarctica. *Quaternary Research*, *40*(1), 70–80. <https://doi.org/10.1006/qres.1993.1057>
- Gore, D. B., Colhoun, E. A., & Bell, K. (1994). Derived constituents in the glacial sediments of the Vestfold Hills, East Antarctica. *Quaternary Science Reviews*, *13*(3), 301–307. [https://doi.org/10.1016/0277-3791\(94\)90033-7](https://doi.org/10.1016/0277-3791(94)90033-7)
- Gunter, B. C., Didova, O., Riva, R. E. M., Ligtenberg, S. R. M., Lanaerts, J. T. M., King, M., et al. (2014). Empirical estimation of present-day Antarctic glacial isostatic adjustment and ice mass change. *The Cryosphere*, *8*(2), 743–760. <https://doi.org/10.5194/tc-8-743-2014>
- Hammond, W. C., Blewitt, G., Kreemer, C., & Nerem, R. S. (2021). GPS imaging of global vertical land motion for studies of sea level rise. *Journal of Geophysical Research: Solid Earth*, *126*, e2021JB022355. <https://doi.org/10.1029/2021JB022355>
- Haran, T., Bohlander, J., Scambos, T., & Fahnestock, M. (2005). *MODIS mosaic of Antarctica (MOA) image map (Digital Media)*. National Snow and Ice Data Center.
- Ivins, E. R., James, T. S., Wahr, J., Schrama, E. J. O., Landerer, F., & Simon, K. (2013). Antarctic contribution to sea-level rise observed by GRACE with improved GIA correction. *Journal of Geophysical Research*, *118*, 3126–3141. <https://doi.org/10.1002/jgrb.50208>
- Kennett, B. L. N., Engdahl, E. R., & Buland, R. (1995). Constraints on seismic velocities in the Earth from traveltimes. *Geophysical Journal International*, *122*(1), 108–124. <https://doi.org/10.1111/j.1365-246X.1995.tb03540.x>
- King, M. A., Altamimi, Z., Boehm, J., Bos, M., Dach, R., Elosegui, P., et al. (2010). Improved constraints to models of glacial isostatic adjustment: A review of the contribution of ground-based geodetic observations. *Surveys in Geophysics*, *31*(5), 465–507. <https://doi.org/10.1007/s10712-010-9100-4>
- King, M. A., Bingham, R. J., Moore, P., Whitehouse, P. L., Bentley, M. J., & Milne, G. A. (2012). Lower satellite-gravimetry estimates of Antarctic sea-level contribution. *Nature*, *491*, 586–589. <https://doi.org/10.1038/nature11621>
- King, M. A., & Watson, C. S. (2020). Antarctic surface mass balance: Natural variability, noise, and detecting new trends. *Geophysical Research Letters*, *47*(12), e2020GL087493. <https://doi.org/10.1029/2020GL087493>
- Kittel, C., Amory, C., Agosta, C., Jourdain, N. C., Hofer, S., Delhasse, A., et al. (2021). Diverging future surface mass balance between the Antarctic ice shelves and grounded ice sheet. *The Cryosphere*, *15*(3), 1215–1236. <https://doi.org/10.5194/tc-15-1215-2021>
- Koulali, A., Whitehouse, P. L., Clarke, P., van den Broeke, M. R., Niell, G. A., King, M. A., et al. (2022). GPS-observed elastic deformation due to surface mass balance variability in the Southern Antarctic Peninsula. *Geophysical Research Letters*. <https://doi.org/10.1029/2021GL097109>
- Li, W., Li, F., Zhang, S., Lei, J., Zhang, Q., & Yuan, L. (2019). Spatiotemporal filtering and noise analysis for regional GNSS network in Antarctica using independent component analysis. *Remote Sensing*, *11*(4), 386. <https://doi.org/10.3390/rs11040386>
- Li, X., Rignot, E., Mouginit, J., & Scheuchl, B. (2016). Ice flow dynamics and mass loss of Totten Glacier, East Antarctica from 1989 to 2015. *Geophysical Research Letters*, *43*, 6366–6373. <https://doi.org/10.1002/2016GL069173>
- Liu, B., King, M., & Dai, W. J. (2018). Common mode error in Antarctic GPS coordinate time-series on its effect on bedrock-uplift estimates. *Geophysical Journal International*, *214*(3), 1652–1664. <https://doi.org/10.1093/gji/ggy217>
- Lloyd, M. A., Wiens, D. A., Zhu, H., Tromp, J., Nyblade, A. A., Aster, R. C., et al. (2020). Seismic structure of the Antarctic upper mantle imaged with adjoint tomography. *Journal of Geophysical Research: Solid Earth*, *125*(3). <https://doi.org/10.1029/2019JB017823>
- Martín-Español, A., King, M. A., Zammit-Mangion, A., Andrews, S. B., Moore, P., & Bamber, J. L. (2016). An assessment of forward and inverse GIA solutions for Antarctica. *Journal of Geophysical Research: Solid Earth*, *121*(9), 6947–6965. <https://doi.org/10.1002/2016jb013154>
- McMinn, A., Hejnisij, H., Harle, K., & McOrist, G. (2001). Late-Holocene climatic change recorded in sediment cores from Ellis Fjord, eastern Antarctica. *The Holocene*, *11*(3), 291–300. <https://doi.org/10.1191/095968301671577682>
- Melini, D., Gegout, P., King, M., Marzeion, B., & Spada, G. (2015). *On the Rebound: Modeling Earth's Ever-Changing Shape* (Vol. 96). EOS. <https://doi.org/10.1029/2015EO033387>
- Métivier, L., Rouby, H., Rebeschung, P., & Altamimi, Z. (2020). ITRF2014, Earth figure changes, and geocenter velocity: Implications for GIA and recent ice melting. *Journal of Geophysical Research: Solid Earth*, *125*(2), e2019JB018333. <https://doi.org/10.1029/2019JB018333>
- Miles, B. W. J., Jordan, J. R., Stokes, C. R., Jamieson, S. S. R., Gudmundsson, G. H., & Jenkins, A. (2021). Recent acceleration of Denman Glacier (1972–2017), East Antarctica, driven by grounding line retreat and changes in ice tongue configuration. *The Cryosphere*, *15*(2), 663–676. <https://doi.org/10.5194/tc-15-663-2021>
- Mohajerani, Y., Velicogna, I., & Rignot, E. (2018). Mass loss of totten and moscow University glaciers, East Antarctica, using regionally optimized GRACE mascons. *Geophysical Research Letters*, *45*(14), 7010–7018. <https://doi.org/10.1029/2018GL078173>
- Niell, G. A., Barletta, V. R., Bordon, A., King, M. A., Whitehouse, P. L., Clarke, P. J., et al. (2014). Rapid bedrock uplift in the Antarctic Peninsula explained by viscoelastic response to recent ice unloading. *Earth and Planetary Science Letters*, *397*, 32–41. <https://doi.org/10.1016/j.epsl.2014.04.019>
- Peltier, R. W., Argus, D. F., & Drummond, R. (2018). Comment on “An Assessment of the ICE-6G\_C (VM5a) Glacial Isostatic Adjustment Model” by Purcell et al. *Journal of Geophysical Research: Solid Earth*, *123*(2), 2019–2028. <https://doi.org/10.1002/2016JB013844>
- Riddell, A. R., King, M. A., Watson, C. S., Sun, Y., Riva, R. E. M., & Rietbroek, R. (2017). Uncertainty in geocenter estimates in the context of ITRF2014. *Journal of Geophysical Research: Solid Earth*, *122*. <https://doi.org/10.1002/2016jb013698>
- Roberts, J., Galton-Fenzi, B. K., Paolo, F. S., Donnelly, C., Gwyther, D. E., Padman, L., et al. (2017). Ocean forced variability of Totten Glacier mass loss. *Geological Society, London, Special Publications*, *461*, 461–186. <https://doi.org/10.1144/sp461.6>
- Samrat, N. H., King, M. A., Watson, C., Hooper, A., Chen, X. Y., Barletta, V. R., & Bordon, A. (2020). Reduced ice mass loss and three-dimensional viscoelastic deformation in northern Antarctic Peninsula inferred from GPS. *Geophysical Journal International*, *222*(2), 1013–1022. <https://doi.org/10.1093/gji/ggaa229>
- Santamaría-Gómez, A., & Mémin, A. (2015). Geodetic secular velocity errors due to interannual surface loading deformation. *Geophysical Journal International*, *202*(2), 763–767. <https://doi.org/10.1093/gji/ggv190>
- Sasgen, I., Martín-Español, A., Horvath, A., Klemann, V., Petrie, E. J., Wouters, B., et al. (2017). Joint inversion estimate of regional glacial isostatic adjustment in Antarctica considering a lateral varying Earth structure (ESA STSE Project REGINA). *Geophysical Journal International*, *211*(3), 1534–1553. <https://doi.org/10.1093/gji/ggx368>
- Shepherd, A., Gilbert, L., Muir, A. S., Konrad, H., McMillan, M., Slater, T., et al. (2019). Trends in Antarctic ice sheet elevation and mass. *Geophysical Research Letters*, *46*(14), 8174–8183. <https://doi.org/10.1029/2019GL082182>
- Sun, Y., & Riva, R. E. M. (2020). A global semi-empirical glacial isostatic adjustment (GIA) model based on Gravity Recovery and Climate Experiment (GRACE) data. *Earth System Dynamics*, *11*(1), 129–137. <https://doi.org/10.5194/esd-11-129-2020>

- Thomas, I. D., King, M. A., Bentley, M. J., Whitehouse, P. L., Penna, N. T., Williams, S. D. P., et al. (2011). Widespread low rates of Antarctic glacial isostatic adjustment revealed by GPS observations. *Geophysical Research Letters*, *38*, L22302. <https://doi.org/10.1029/2011GL049277>
- Torres, M. E., Colominas, M. A., Schlotthauer, G., & Flandrin, P. (2011a). A complete ensemble empirical mode decomposition with adaptive noise. In *Paper presented at the 2011 IEEE International conference on acoustics, speech and signal processing (ICASSP)*. <https://doi.org/10.1109/icassp.2011.5947265>
- van Wessem, J. M., van de Berg, W. J., Noël, B. P. Y., van Meijgaard, E., Amory, C., Birnbaum, G., et al. (2018). Modelling the climate and surface mass balance of polar ice sheets using RACMO2—Part 2: Antarctica (1979–2016). *The Cryosphere*, *12*(4), 1479–1498. <https://doi.org/10.5194/tc-12-1479-2018>
- Wang, G., Garcia, D., Liu, Y., de Jeu, R., & Johannes Dolman, A. (2012). A three-dimensional gap filling method for large geophysical datasets: Application to global satellite soil moisture observations. *Environmental Modelling & Software*, *30*, 139–142. <https://doi.org/10.1016/j.envsoft.2011.10.015>
- White, D. A., Bennike, O., Berg, S., Harley, S. L., Fink, D., Kiernan, K., et al. (2009). Geomorphology and glacial history of Rauer Group, East Antarctica. *Quaternary Research*, *72*(1), 80–90. <https://doi.org/10.1016/j.yqres.2009.04.001>
- Whitehouse, P. L., Bentley, M. J., Milne, G. A., King, M. A., & Thomas, I. D. (2012). A new glacial isostatic adjustment model for Antarctica: Calibrated and tested using observations of relative sea-level change and present-day uplift rates. *Geophysical Journal International*, *190*(3), 1464–1482. <https://doi.org/10.1111/j.1365-246X.2012.05557.x>
- Whitehouse, P. L., Gomez, N., King, M. A., & Wiens, D. A. (2019). Solid Earth change and the evolution of the Antarctic ice sheet. *Nature Communications*, *10*(1), 503. <https://doi.org/10.1038/s41467-018-08068-y>
- Wolstencroft, M., King, M. A., Whitehouse, P. L., Bentley, M. J., Nield, G. A., King, E. C., et al. (2015). Uplift rates from a new high-density GPS network in Palmer Land indicate significant late Holocene ice loss in the southwestern Weddell Sea. *Geophysical Journal International*, *203*(1), 737–754. <https://doi.org/10.1093/gji/ggv327>
- Zwartz, D., Bird, M., Stone, J., & Lambeck, K. (1998). Holocene sea-level change and ice-sheet history in the Vestfold Hills, East Antarctica. *Earth and Planetary Science Letters*, *155*(1), 131–145. [https://doi.org/10.1016/S0012-821X\(97\)00204-5](https://doi.org/10.1016/S0012-821X(97)00204-5)

## References From the Supporting Information

- Colominas, M. A., Schlotthauer, G., & Torres, M. E. (2014). Improved complete ensemble EMD: A suitable tool for biomedical signal processing. *Biomedical Signal Processing and Control*, *14*, 19–29. <https://doi.org/10.1016/j.bspc.2014.06.009>
- DeMets, C., Calais, E., & Merkouriev, S. (2016). Reconciling geodetic and geological estimates of recent plate motion across the Southwest Indian Ridge. *Geophysical Journal International*, *208*(1), 118–133. <https://doi.org/10.1093/gji/ggw386>
- Dong, D., Fang, P., Bock, Y., Webb, F., Prawirodirdjo, L., Kedar, S., & Jamason, P. (2006). Spatiotemporal filtering using principal component analysis and Karhunen-Loeve expansion approaches for regional GPS network analysis. *Journal of Geophysical Research*, *111*, B03405. <https://doi.org/10.1029/2005JB003806>
- Kim, B.-H., Eom, J., Seo, K.-W., & Wilson, C. R. (2016). Spurious barometric pressure acceleration in Antarctica and propagation into GRACE Antarctic mass change estimates. *Geophysical Journal International*, *206*(2), 1306–1314. <https://doi.org/10.1093/gji/ggw211>
- King, M. A., & Watson, C. S. (2020). Antarctic surface mass balance: Natural variability, noise, and detecting new trends. *Geophysical Research Letters*, *47*(12), e2020GL087493. <https://doi.org/10.1029/2020GL087493>
- Li, W., Li, F., Zhang, S., Lei, J., Zhang, Q., & Yuan, L. (2019). Spatiotemporal filtering and noise analysis for regional GNSS network in Antarctica using independent component analysis. *Remote Sensing*, *11*(4), 386.
- Liu, B., King, M., & Dai, W. J. (2018). Common mode error in Antarctic GPS coordinate time-series on its effect on bedrock-uplift estimates. *Geophysical Journal International*, *214*(3), 1652–1664.
- Lloyd, A. J., et al. (2020). Seismic structure of the Antarctic upper mantle imaged with adjoint tomography. *Journal of Geophysical Research: Solid Earth*, *125*(3). <https://doi.org/10.1029/2019JB017823>
- Martín-Español, A., Zammit-Mangion, A., Clarke, P. J., Flament, T., Helm, V., King, M. A., et al. (2016). Spatial and temporal Antarctic Ice Sheet mass trends, glacio-isostatic adjustment, and surface processes from a joint inversion of satellite altimeter, gravity, and GPS data. *Journal of Geophysical Research: Earth Surface*, *121*(2), 182–200. <https://doi.org/10.1002/2015JF003550>
- Santamaría-Gómez, A., & Mémin, A. (2015). Geodetic secular velocity errors due to interannual surface loading deformation. *Geophysical Journal International*, *202*(2), 763–767. <https://doi.org/10.1093/gji/ggv190>
- Torres, M. E., Colominas, M. A., Schlotthauer, G., & Flandrin, P. (2011b). A complete ensemble empirical mode decomposition with adaptive noise. In *Paper presented at 2011 IEEE International Conference on Acoustics, Speech and signal processing (ICASSP)*. (pp. 22–27).