

Oct 22nd, 11:00 AM - 12:30 PM

UMass Brut: Re-imagining the Plinth

John Amodeo
IBI Group

Follow this and additional works at: https://scholarworks.umass.edu/umassbrut_community



Part of the [Architectural History and Criticism Commons](#), [Cultural Resource Management and Policy Analysis Commons](#), [Environmental Design Commons](#), [Historic Preservation and Conservation Commons](#), [Landscape Architecture Commons](#), [Other Architecture Commons](#), and the [Urban, Community and Regional Planning Commons](#)

Amodeo, John, "UMass Brut: Re-imagining the Plinth" (2021). *UMassBRUT Community*. 7.
https://scholarworks.umass.edu/umassbrut_community/2021symposium/day_1/7

This Event is brought to you for free and open access by ScholarWorks@UMass Amherst. It has been accepted for inclusion in UMassBRUT Community by an authorized administrator of ScholarWorks@UMass Amherst. For more information, please contact scholarworks@library.umass.edu.

UMASS DARTMOUTH: RE-IMAGINING THE PLINTH

UMass Brut Symposium
Session 2: Sense of Place

John Amodeo, ASLA LEED AP
Principal



PAUL RUDOLPH 1918-1997

1. Harvard GSD '47, Masters of Architecture under Bauhaus founder Walter Gropius
2. Born in KY, Bachelor of Architecture from Alabama Tech, and began his first practice in Sarasota, FL, becoming one of the founders of the Sarasota School of Architecture, a southern modernist movement.
3. An early practitioner of "green architecture": Sunscreens and cross-ventilation
4. Chair of Yale Department of Architecture 1958-64: his students include Muzharul Islam, Norman Foster, and Richard Rogers



**LOCAL RUDOLPH
ARCHITECTURE**



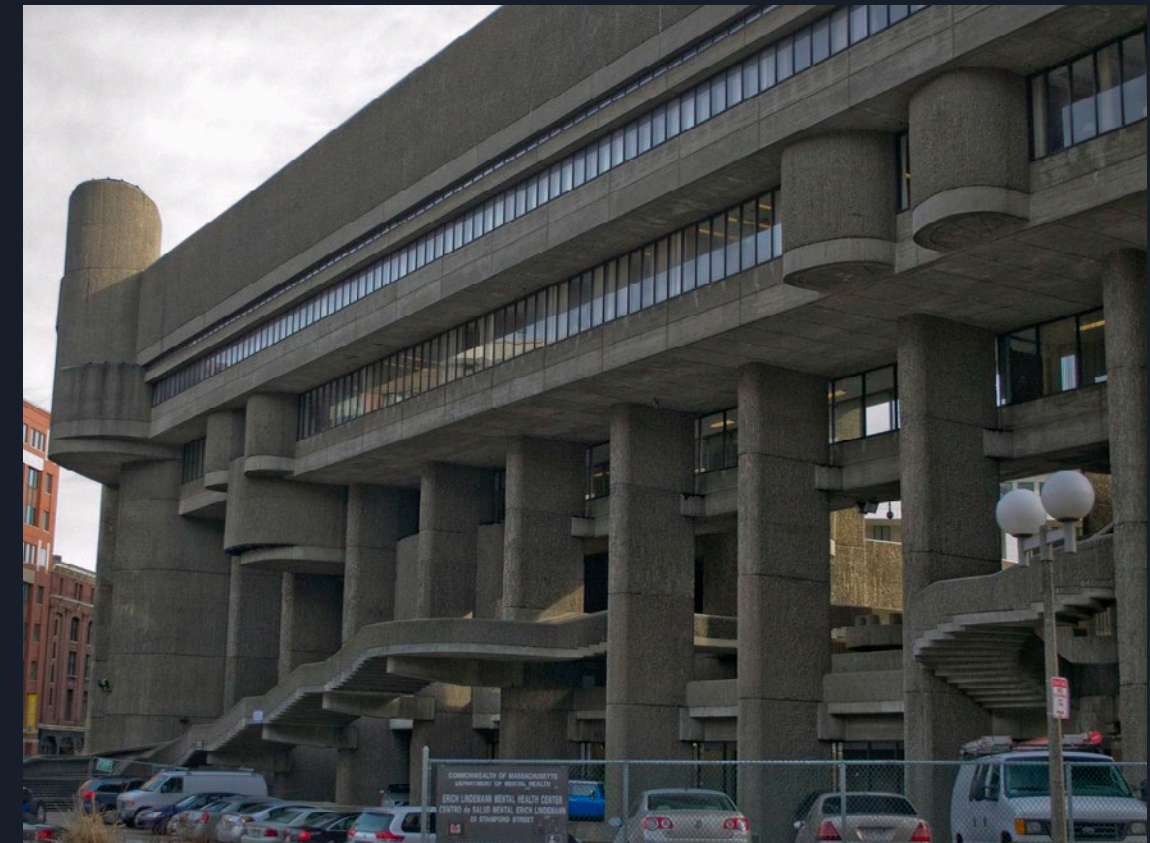
Blue Cross Blue Shield Building, 1957



First and Second Church, 1963



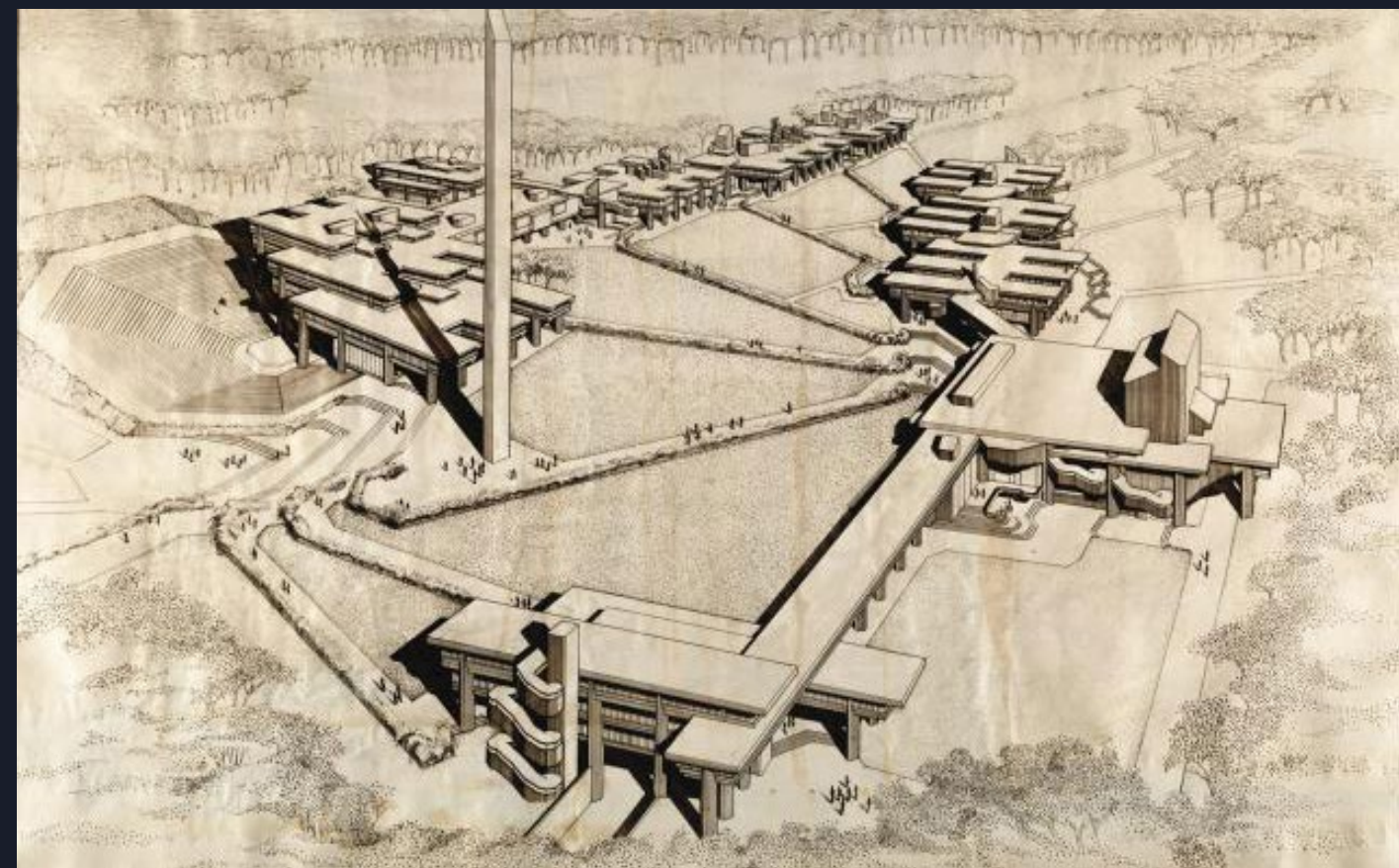
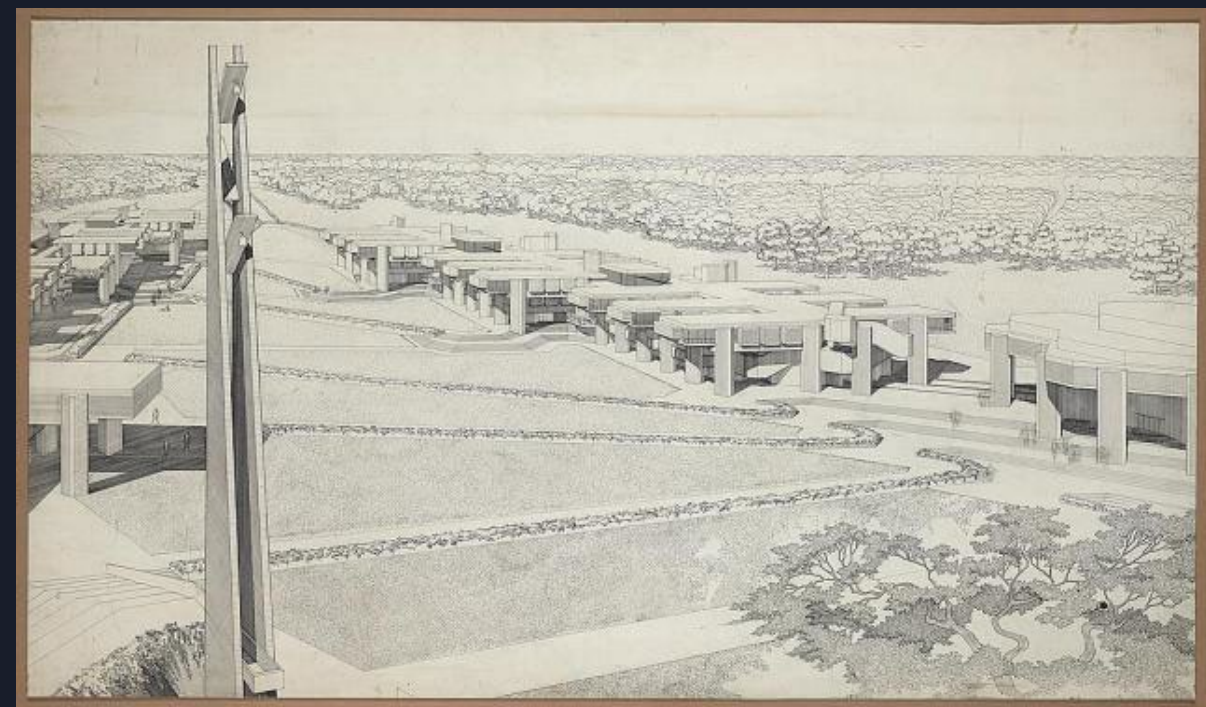
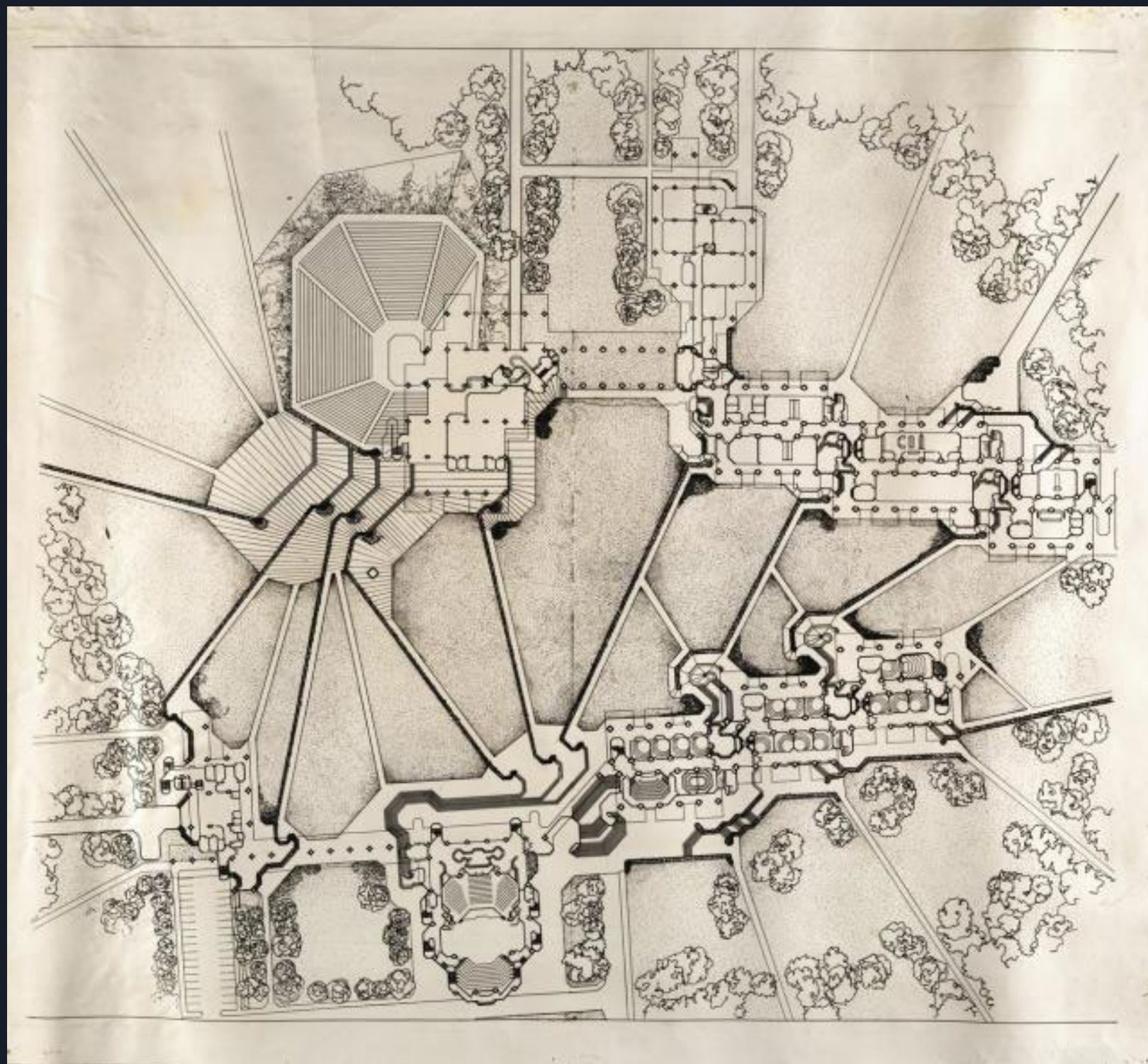
Yale Art and Architecture Building, 1963



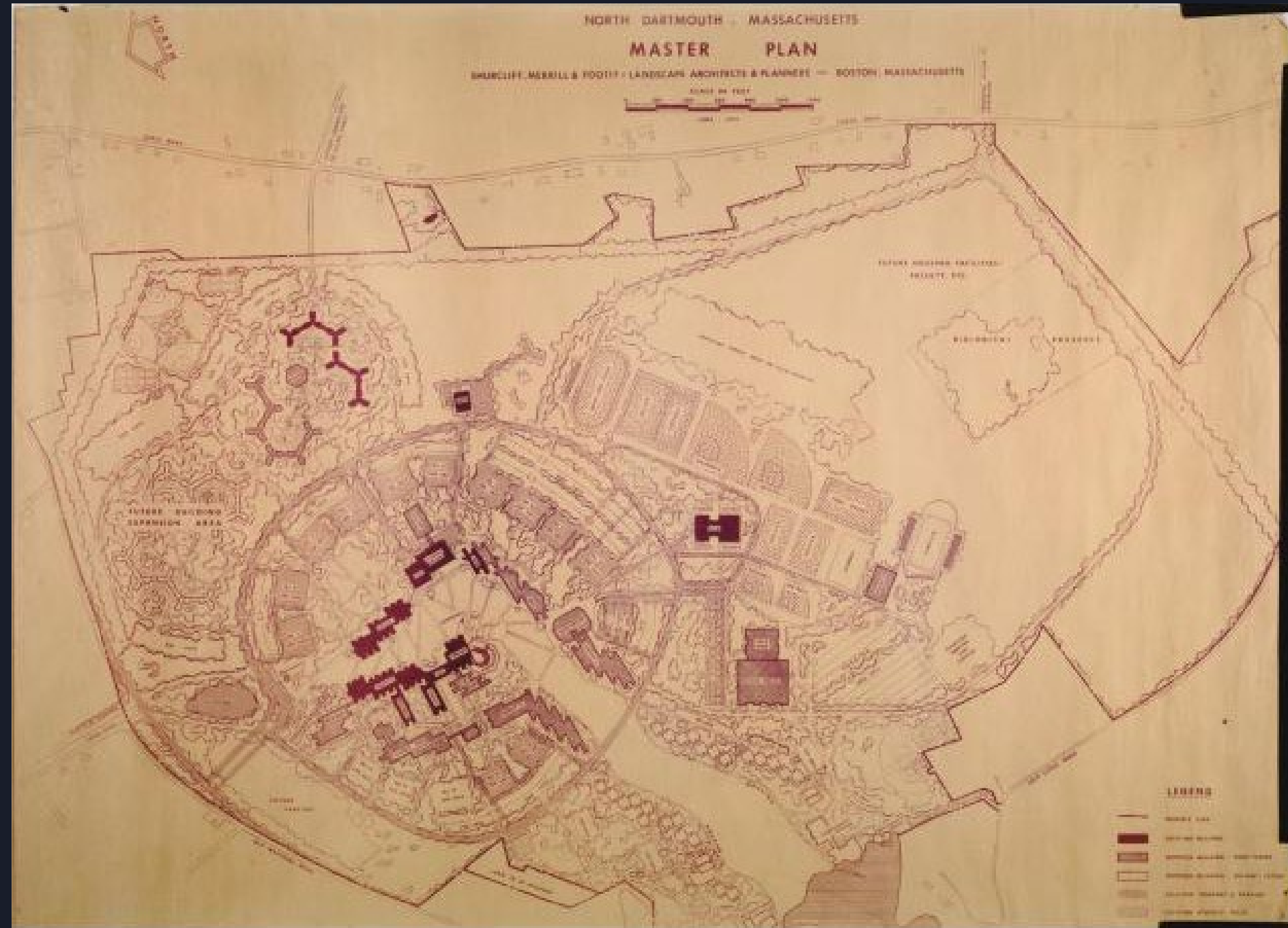
Government Service Center, 1971

UMASS DARTMOUTH CAMPUS MASTER PLAN, 1963

PAUL RUDOLPH



UMASS DARTMOUTH CAMPUS LANDSCAPE MASTER PLAN, 1963
SHURCLIFF, MERRILL, AND FOOTIT



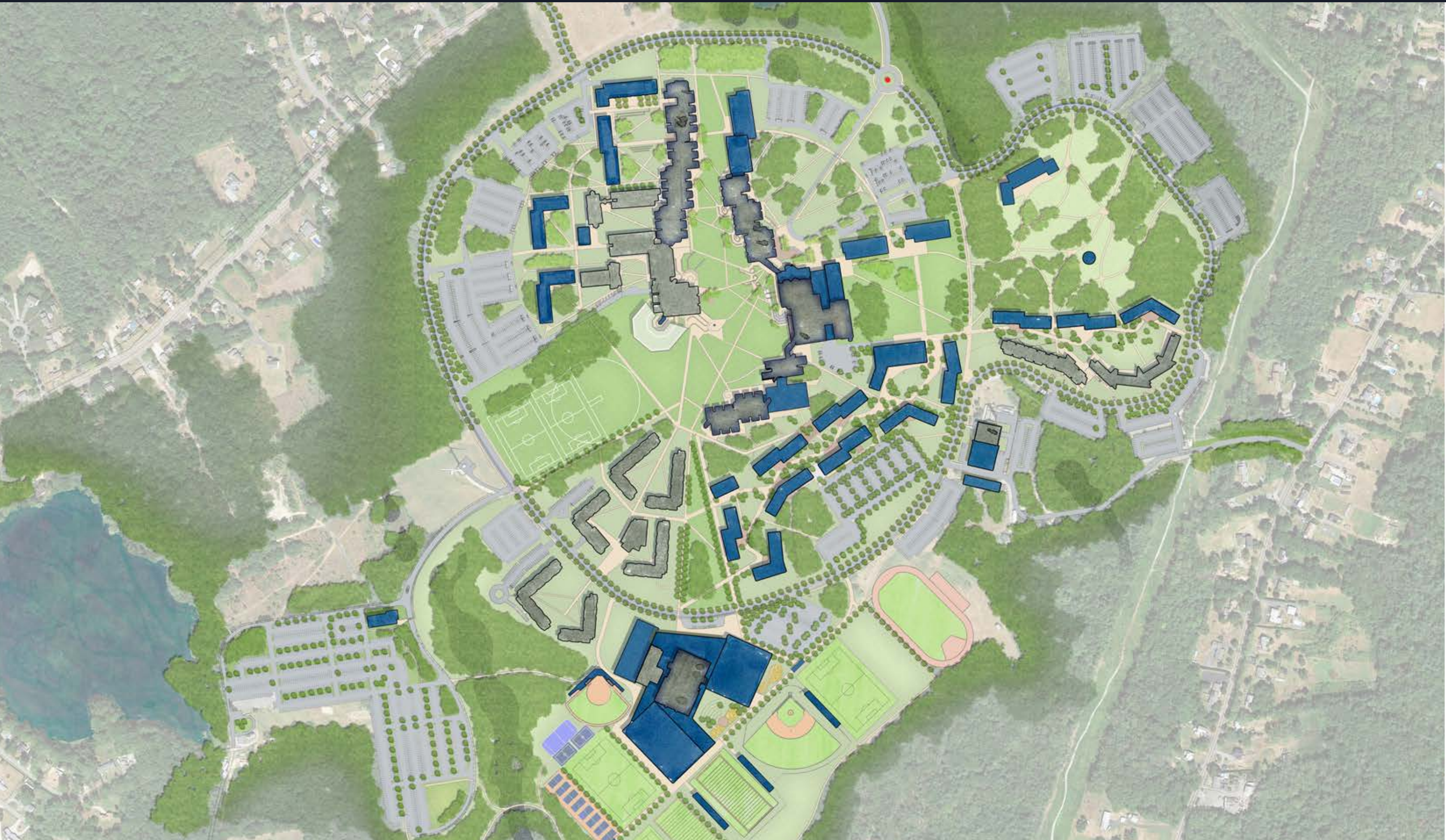
UMASS DARTMOUTH OPENS 1964



UMASS DARTMOUTH CAMPUS TODAY



UMASS DARTMOUTH CAMPUS VISION PLAN, 2018



PRIORITY PROJECT

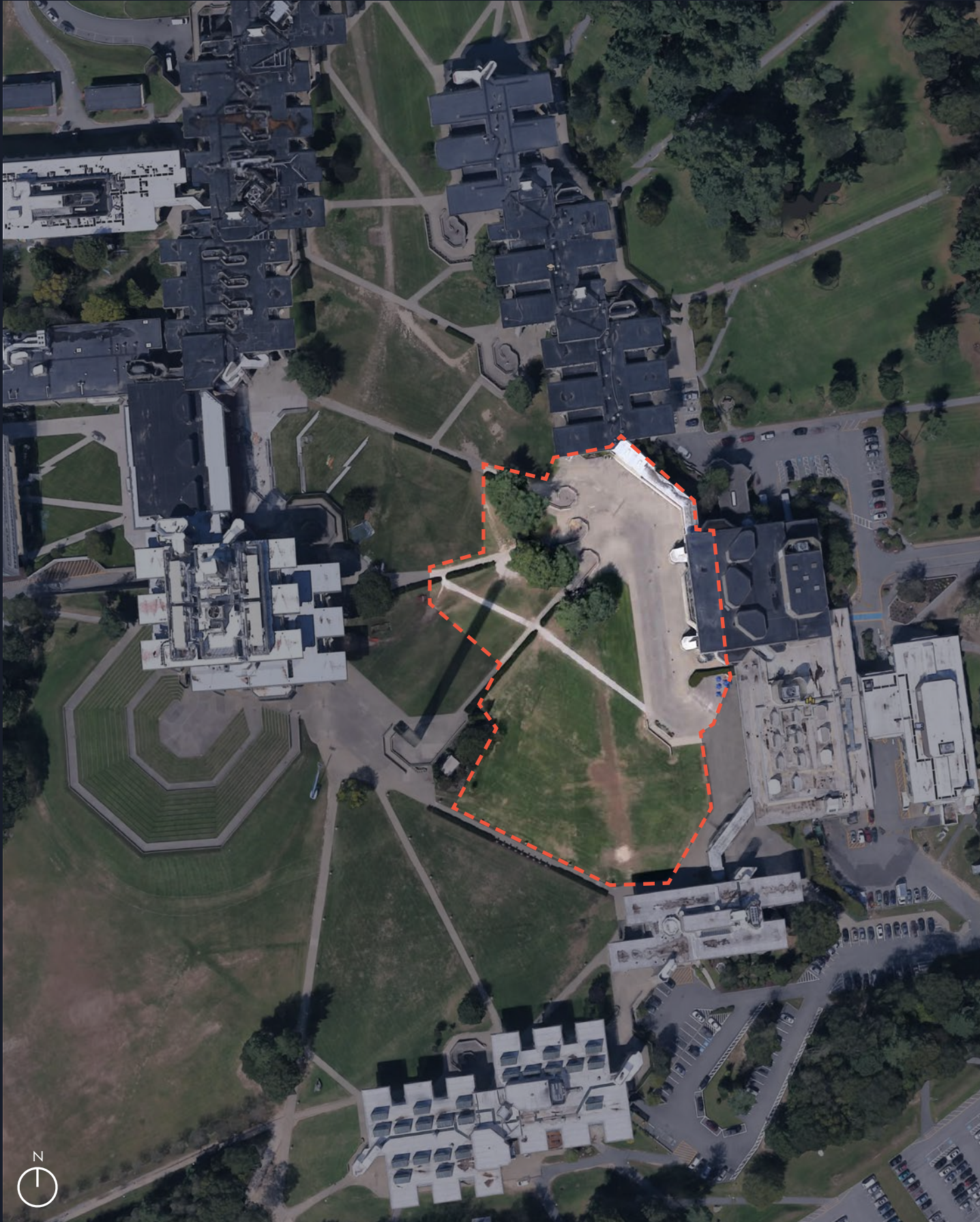
MAIN AUDITORIUM STEPS

GOALS

1. Improve the overall image of the Auditorium as it engages the Main Quad
2. Introduce more planting/softscape
3. Activate the area as a campus gathering place
4. Improve Universal Access
5. Respect the Rudolph legacy



OVERALL SITE PLAN



EXISTING



PROPOSED

BEFORE & AFTER

MAINTAINING MONUMENTALITY



BEFORE & AFTER

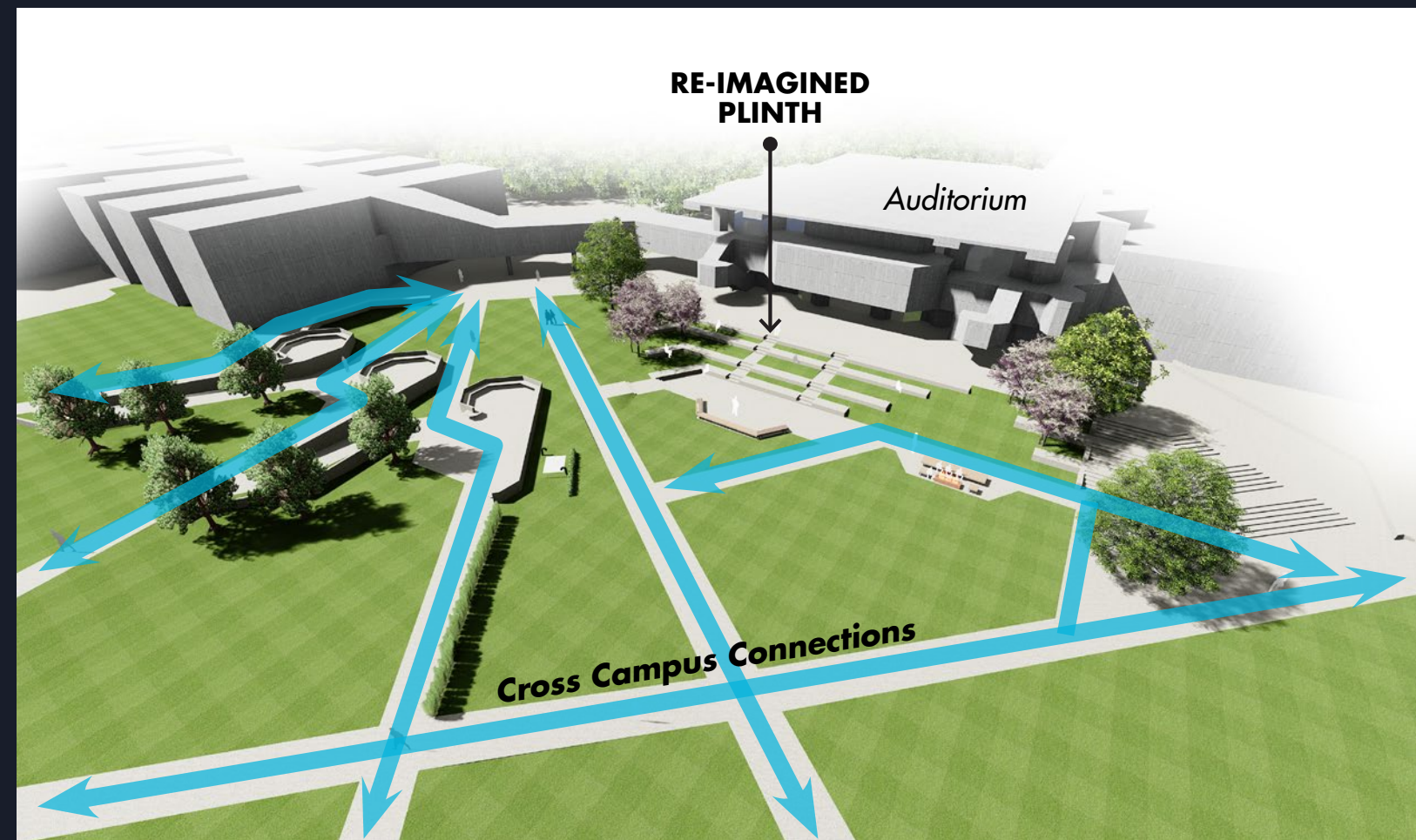
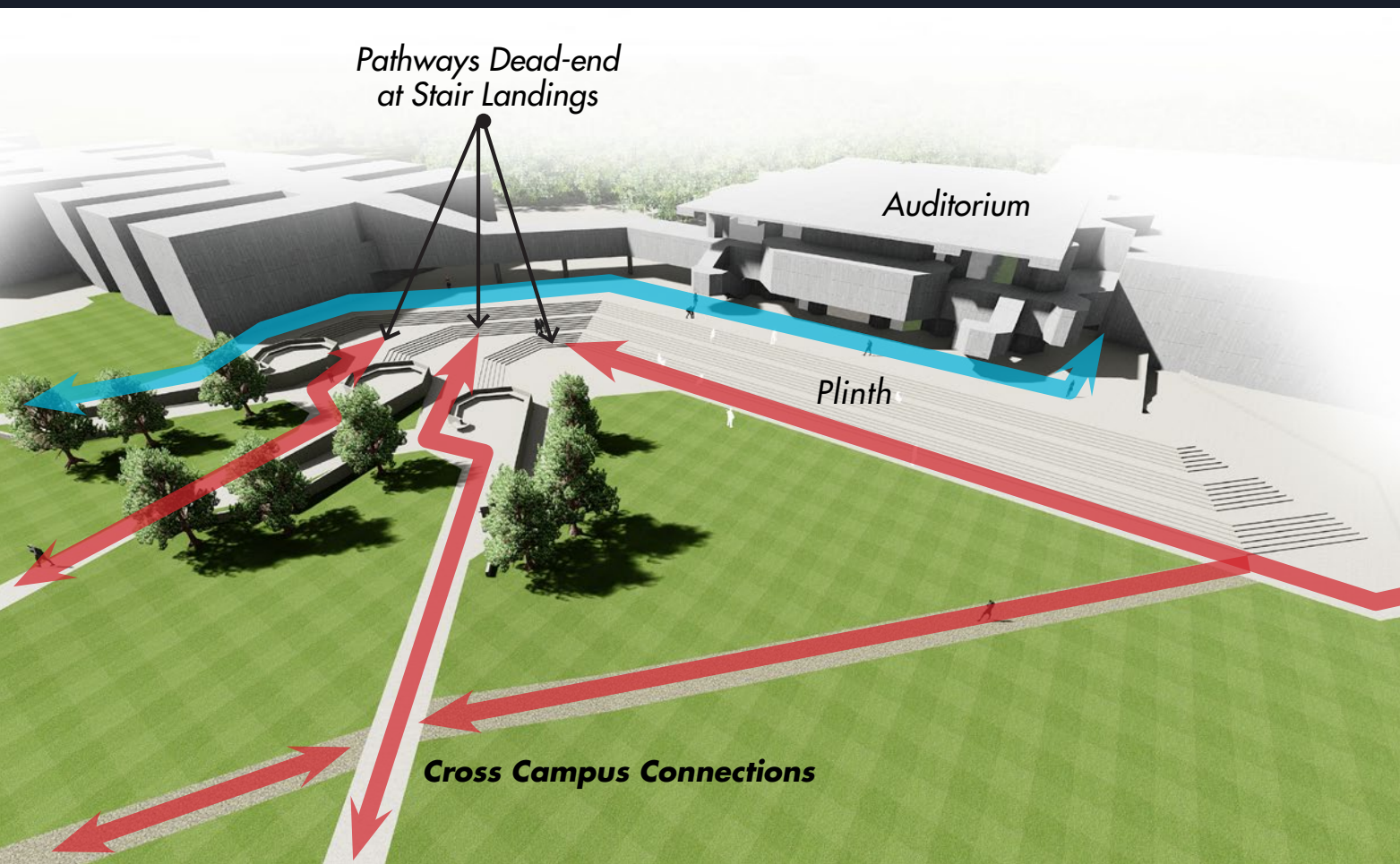
CREATING GATHERING SPACE



BEFORE & AFTER

IMPROVING UNIVERSAL ACCESS

ACCESSIBILITY DIAGRAMS



-  ACCESSIBLE PATHS
-  INACCESSIBLE PATHS

BEFORE & AFTER

IMPROVING UNIVERSAL ACCESS



BEFORE & AFTER

IMPROVING UNIVERSAL ACCESS



BEFORE & AFTER

LIGHTING



SYMPATHETIC GEOMETRY / SCALE / MUSCULARITY



MATERIALITY / CONCRETE



MATERIALITY / SOFTENING



MATERIALITY / CREATING WARMTH



DEDICATION CEREMONY, NOVEMBER 2017



*Will some of today's
approaches need our
future attention ?*

