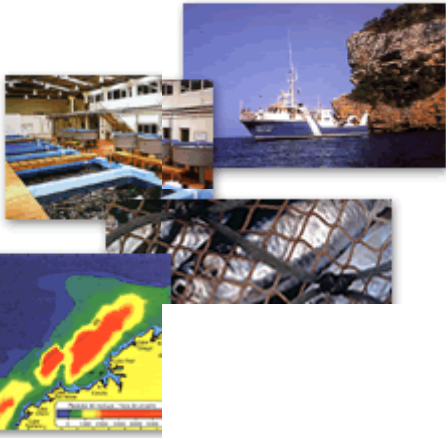




INSTITUTO
ESPAÑOL DE
OCEANOGRAFÍA



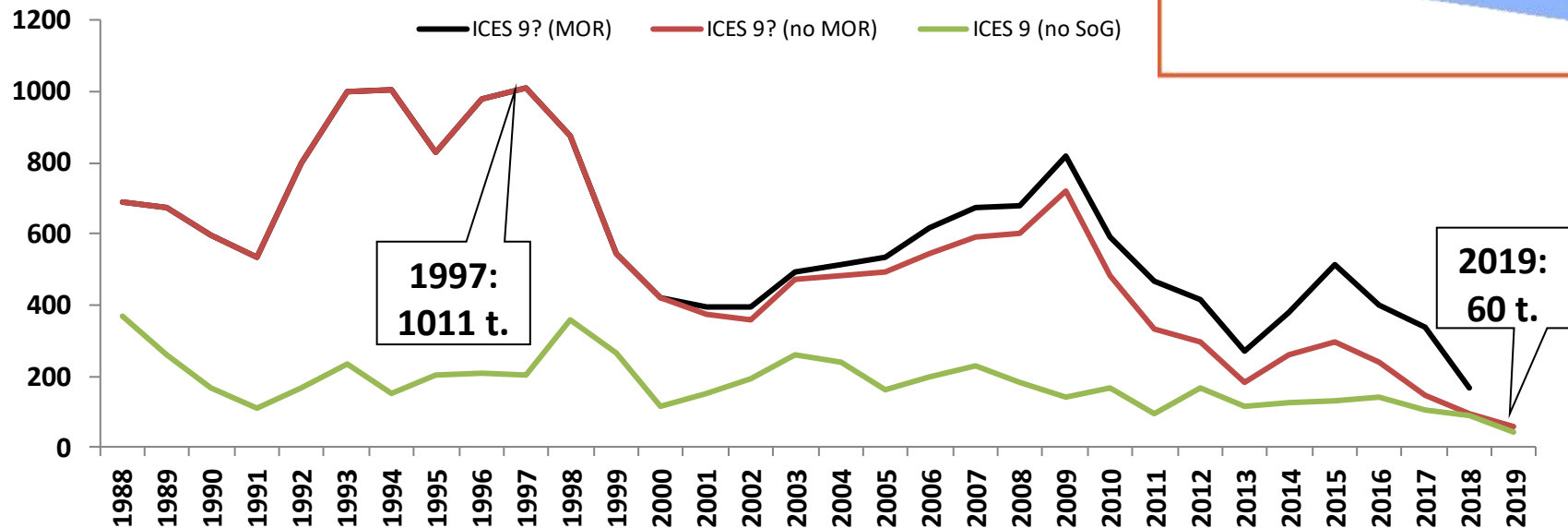
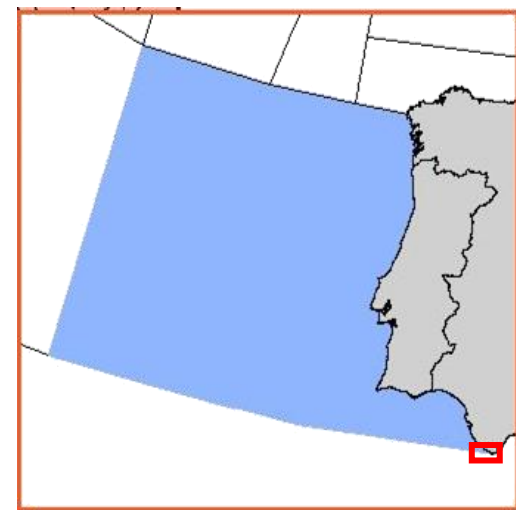
SBR in ICES 9

Juan Gil Herrera

ICES WGDEEP

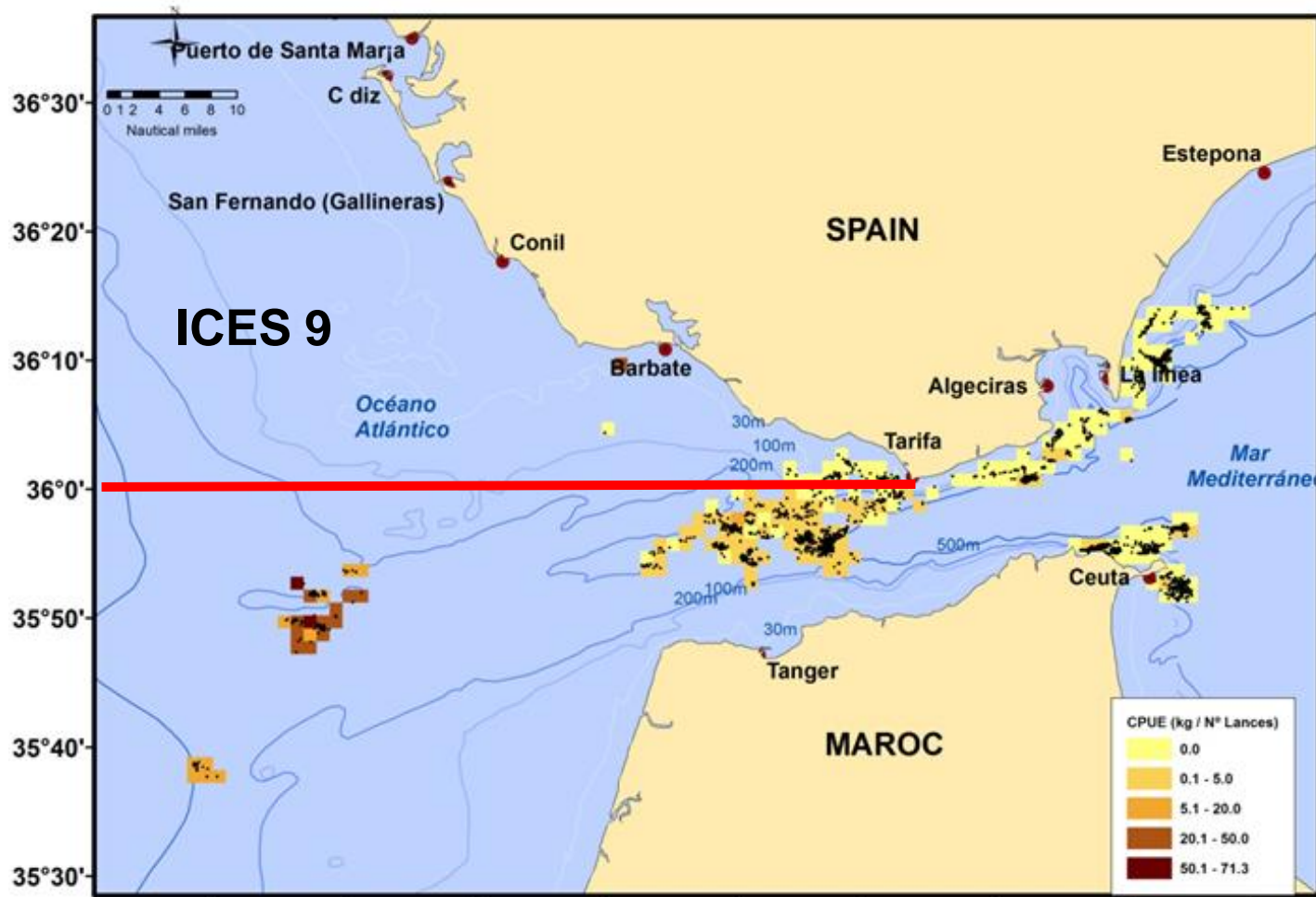
24 April-1 May 2020

BLACKSPOT SEABREAM LANDINGS IN ICES 9

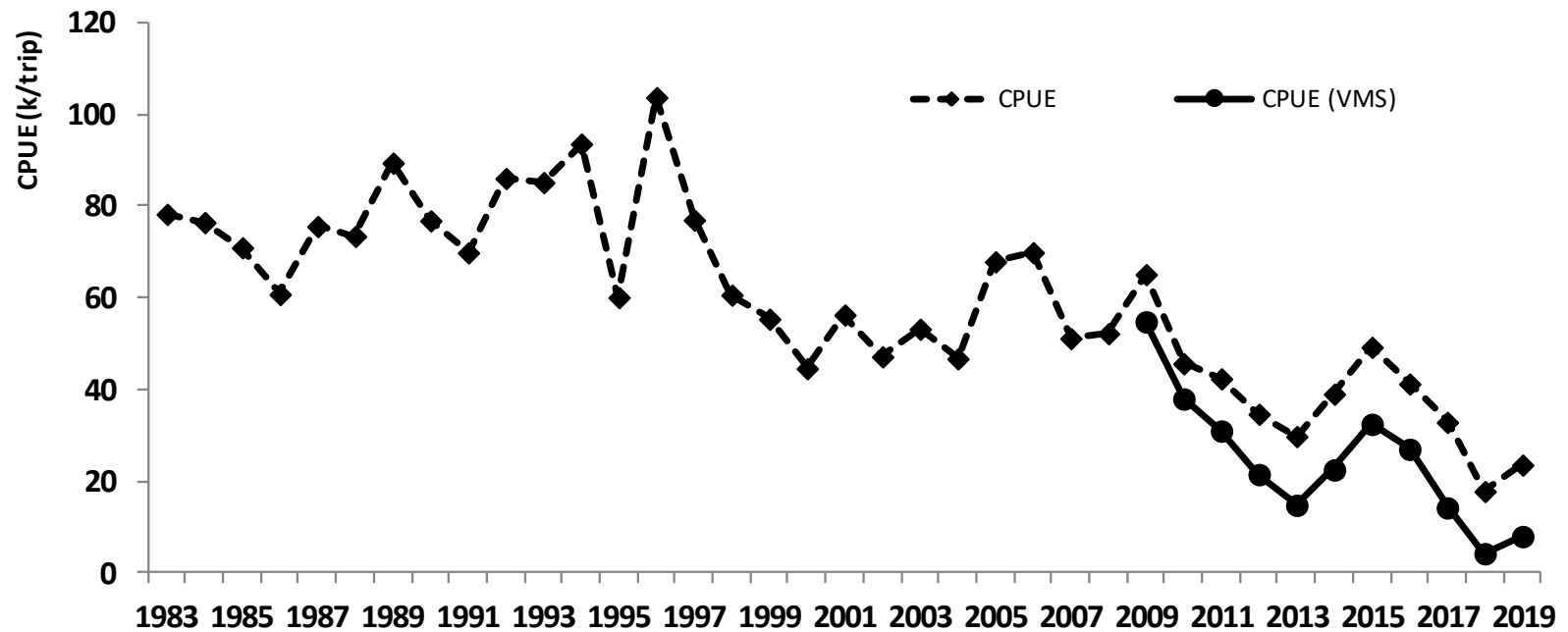


***Pagellus bogaraveo* is caught by Spanish and Portuguese fleets in ICES Subarea 9? Black line includes Morocco landings since 2001. Green line corresponds to ICES 9 landings without Strait of Gibraltar target fishery**

SPANISH “VORACERA” TARGET FISHERY FOOTPRINT (from VMS)

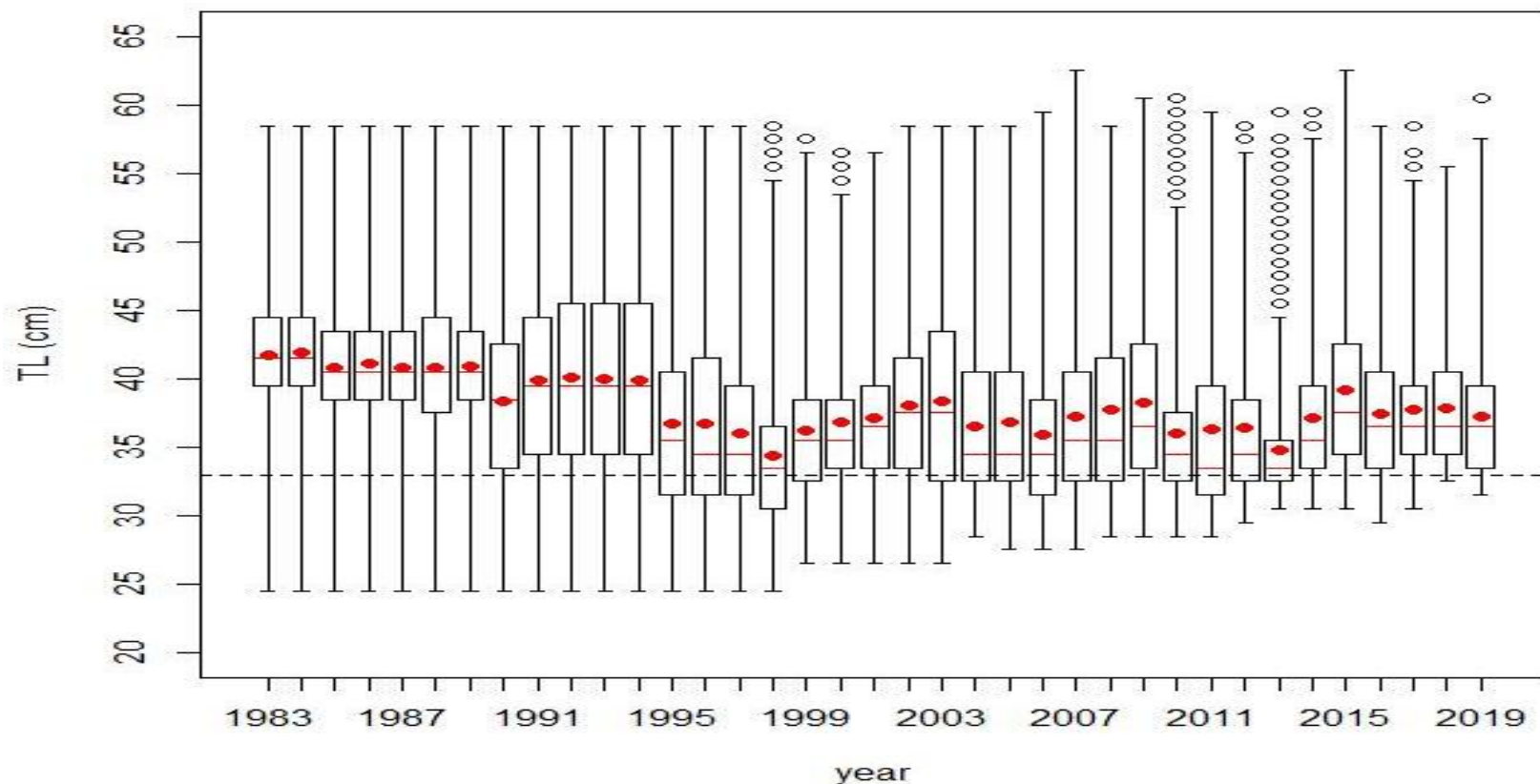


SPANISH “VORACERA” TARGET FISHERY (Strait of Gibraltar) CPUEs



Biomass index from VMS as a basis for the Advice!!

SPAIN LANDINGS LENGTH DISTRIBUTIONS (Strait of Gibraltar)



EU Minimum Landing Size = 33 cm TL (for Atlantic and Mediterranean)

PORTUGAL INFO (Farias and Figueiredo, WD 2020)

Landings by region (5)

Peniche (Portuguese Central Western coast) represented nearly 50% of the Portuguese landings of the species in ICES 9

Standardized CPUE (2015-2019)

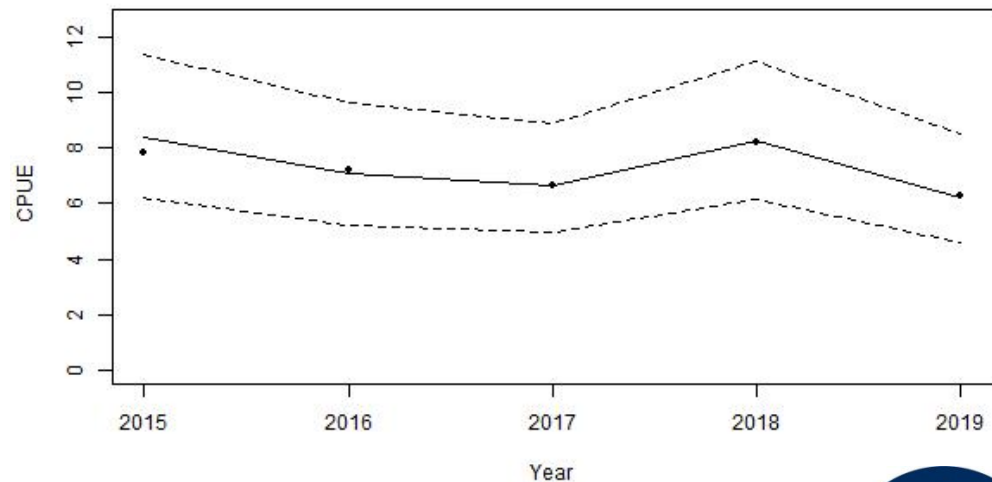
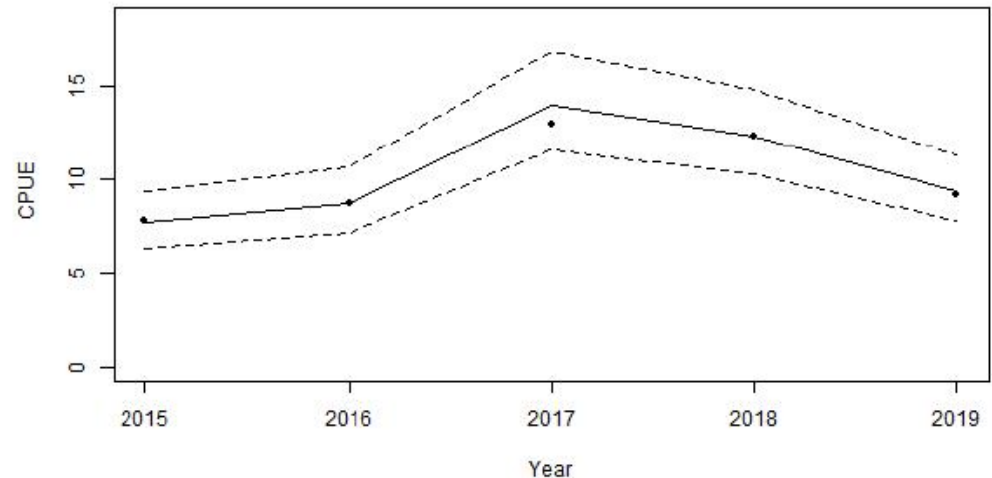
2 reference fleets, from Peniche:

Polyvalent (21 boats)

Trawl (14 boats)

Trends are not in line with the Strait of Gibraltar one

Polyvalent fleet CPUE



+ PORTUGAL INFO (Farias and Figueiredo, WD 2020)

LBI exercise:

L_{50} and L_{inf} from Krug (1990)

L-W parameters (2019)

Ref.	Conservation					P_{mega}	Optimizing Yield	MSY
	L_c/L_{mat}	$L_{25\%}/L_{\text{mat}}$	$L_{95\%}/L_{\text{inf}}$	$L_{\text{maxy}}/L_{\text{opt}}$	$L_{\text{max5\%}}/L_{\text{inf}}$		$L_{\text{mean}}/L_{\text{opt}}$	$L_{\text{mean}}/L_{F=M}$
	> 1	> 1	> 0.8	≈ 1	> 0.8	>30%	≈ 1 (>0.9)	≥ 1
2014	0.66	0.74	0.66	0.80	0.74	2.5%	0.79	0.94
2015	0.77	0.82	0.71	0.85	0.82	4.8%	0.86	0.95
2016	0.66	0.69	0.71	0.94	0.78	3.5%	0.79	0.95
2017	0.77	0.77	0.68	0.73	0.72	1.8%	0.82	0.91
2018	0.77	0.79	0.69	0.87	0.75	2.8%	0.84	0.93
2019	0.66	0.79	0.72	0.90	0.77	4.0%	0.83	1.00

Hermaphrodite species

ADVICE, AS IN PREVIOUS YEARS

DLS 3.2 Category

Index A (2018–2019)		6.08
Index B (2015–2017)		24.54
Index ratio (A/B)		0.25
Uncertainty cap	Applied	0.80
Recent advised catch (2019–2020)		149 t
Discard rate		Negligible
Precautionary buffer	Not applied?	
Catch advice		119 t
% Advice change		-20%

ALTERNATES?

QUESTIONS ON THE TABLE, AGAIN ... NEVER IS TOO LATE

Stock identity (species patchy distribution)

Strait of Gibraltar “target” fishery: ICES and GFCM

Outside Strait of Gibraltar “not target” fisheries. Its landings decrease might be caused from TAC (and quotas) reductions based on the advice which only reflects the biomass decrease of the overexploited SoG fishery

Basis for the advice (no benchmark yet):

- Same as till now
- Leave out SoG target fishery (so, strictly sbr-9)

Portuguese info for DLS 3.2

Move down to DLS 4 or 5

Sorry about the mess ☹