



HEALTHY CITIES - EXPERT PANEL
ESCUELA ANDALUZA DE SALUD PUBLICA
APRIL 26TH - GRANADA, SPAIN



Land use and Transport

Urban planning and mobility as promoters of healthy cities

GranWHO expert panel on Healthy Cities

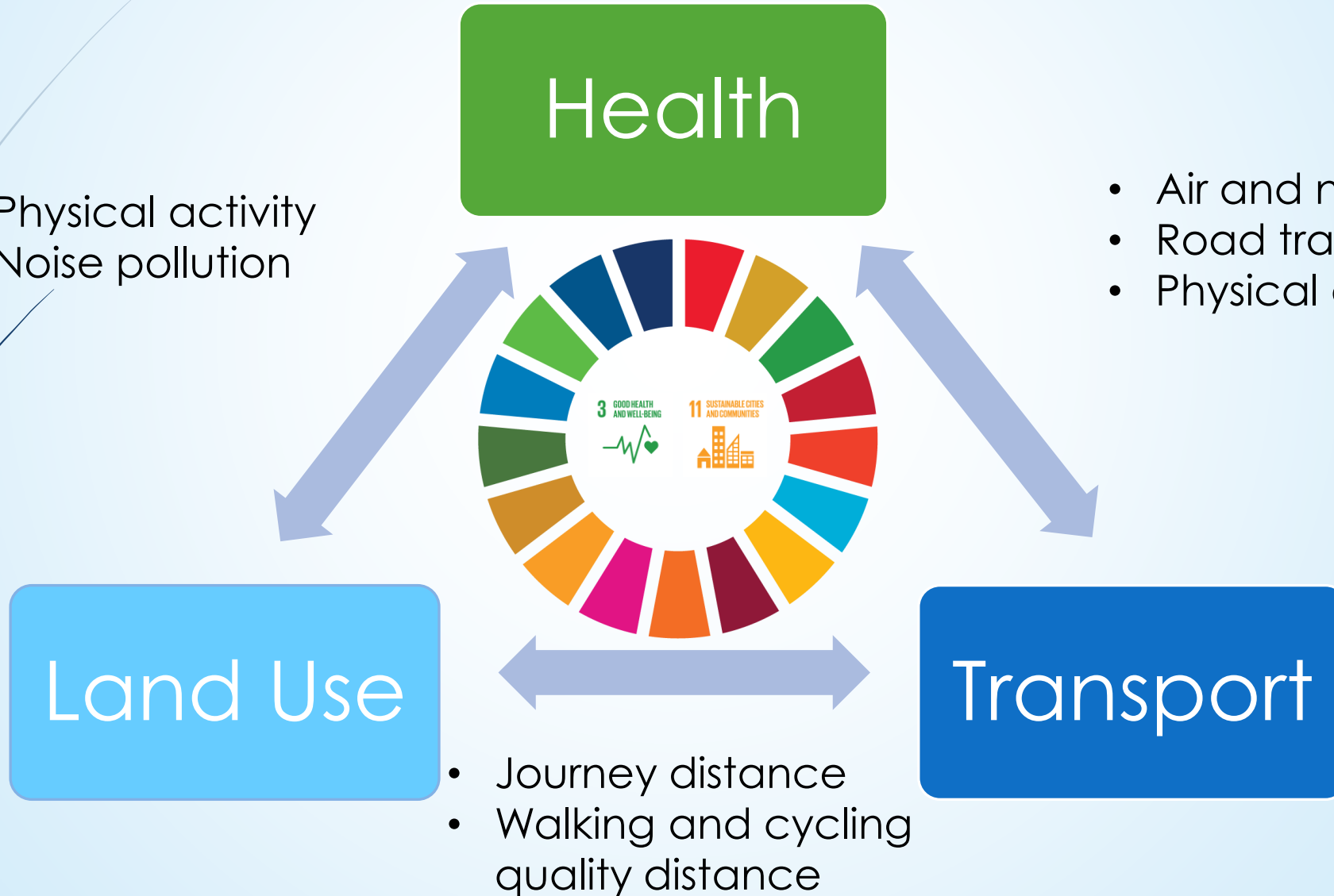
M. Gabriela Ochoa Covarrubias

PhD student

Granada 2019

Health, land use and transport

- Physical activity
- Noise pollution



- Air and noise pollution
- Road traffic injuries
- Physical activity

Walking and cycling?

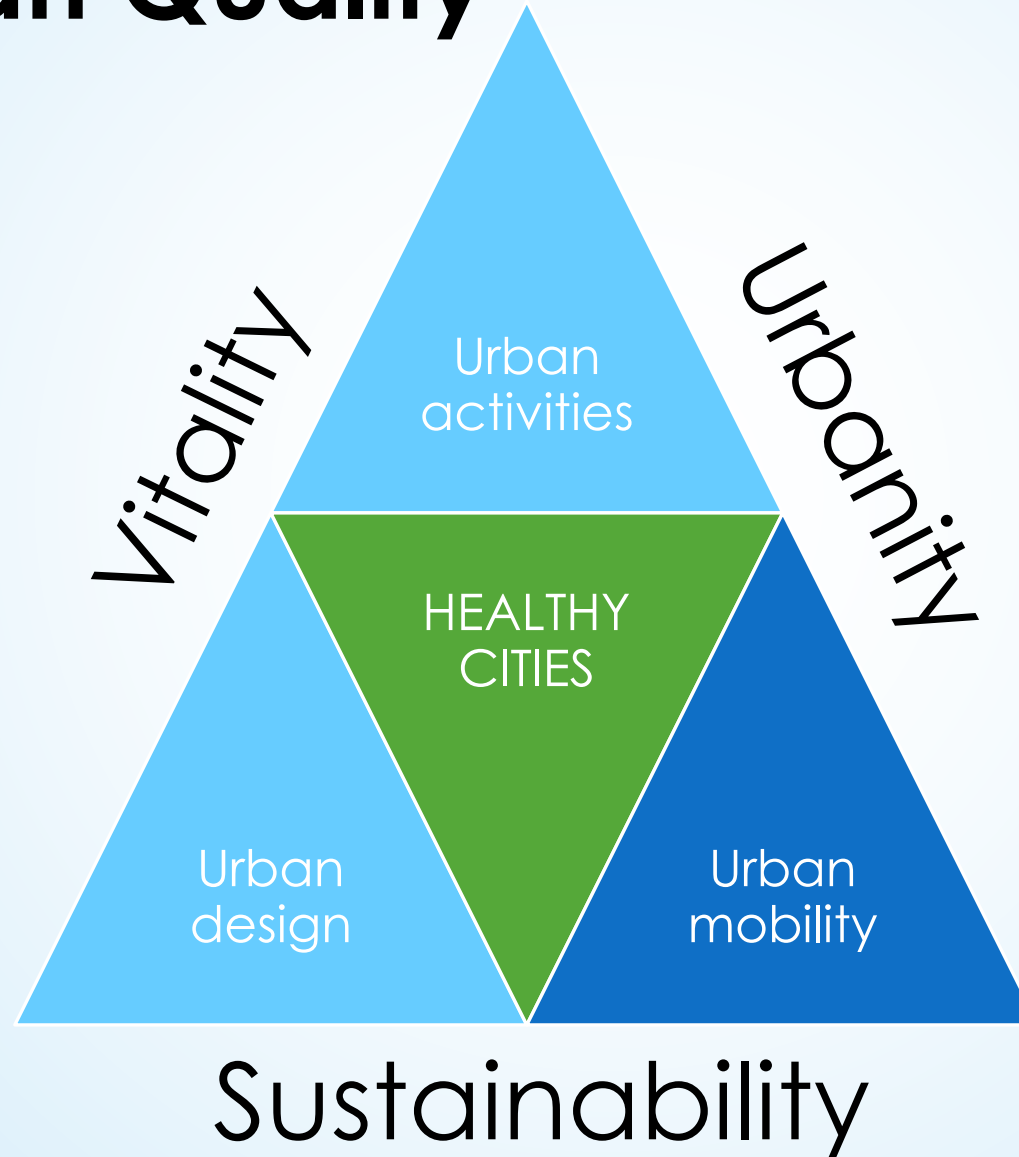
Land Use



Transport

- Weather (measuring)
 - Group of age
 - Microclimate
 - Cultural behaviour
- Distance (reducing)
 - Density
 - Diversity
 - Proximity
- Quality distance (promoting)
 - Urban topology, sidewalks, green areas, bicycle lanes
 - Traffic, intersection design, connectivity
 - Public security

Urban Quality

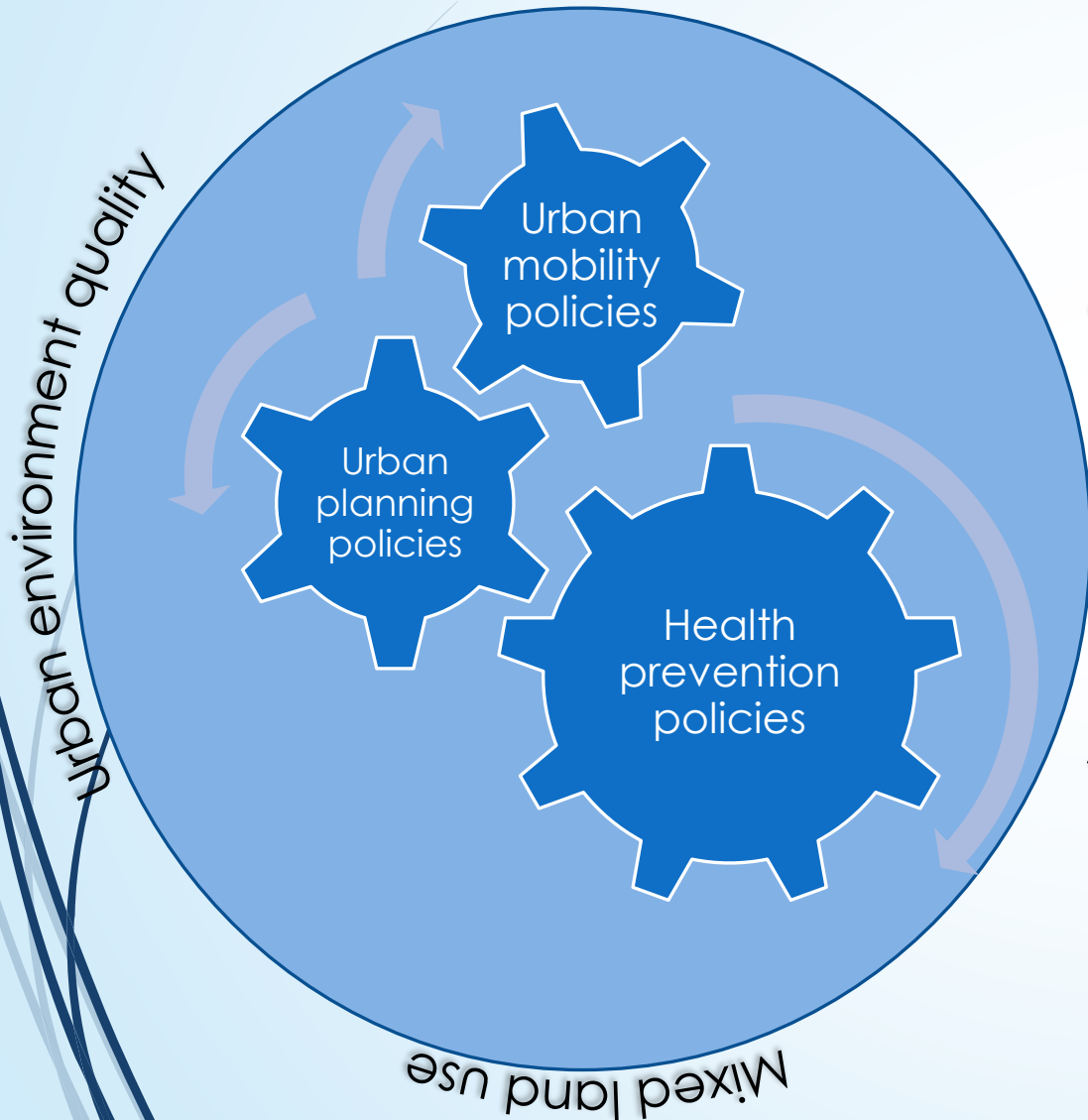


Proximity Density Diversity

URBAN QUALITY

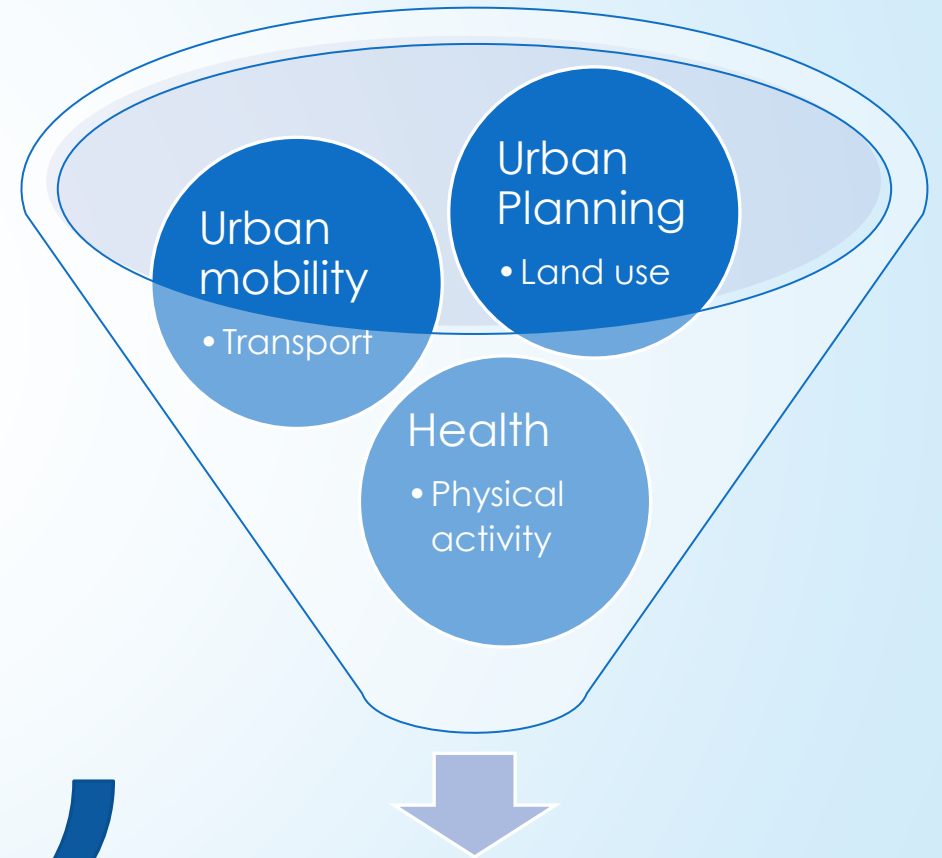
Conclusion

Policymakers coordination



Journeys reduction

Interdisciplinary research



Causality links



Conclusion

“...perhaps the most important advantage of urban proximity is that it enables us to work together in order to make our world better” Edward Glaeser, Harvard University professor.

References



- Böcker, L., Dijst, M., & Faber, J. (2016). Weather, transport mode choices and emotional travel experiences. *Transportation Research Part A: Policy and Practice*, 94, 360–373. <https://doi.org/10.1016/j.tra.2016.09.021>
- Bouchard, C., Blair, S. N., & Haskell, W. L. (2018). *Physical Activity and Health*. Human Kinetics.
- Chang, A., Miranda-Moreno, L., Cao, J., & Welle, B. (2017). The effect of BRT implementation and streetscape redesign on physical activity: A case study of Mexico City. *Transportation Research Part A: Policy and Practice*, 100, 337–347. <https://doi.org/10.1016/j.tra.2017.04.032>
- Chica-Olmo, J., Rodríguez-López, C., & Chillón, P. (2018). Effect of distance from home to school and spatial dependence between homes on mode of commuting to school. *Journal of Transport Geography*, 72, 1–12. <https://doi.org/10.1016/j.jtrangeo.2018.07.013>
- Chillón, P., Evenson, K. R., Vaughn, A., & Ward, D. S. (2011). A systematic review of interventions for promoting active transportation to school. *International Journal of Behavioral Nutrition and Physical Activity*, 8(1), 10. <https://doi.org/10.1186/1479-5868-8-10>
- Claris, S., & Scopelliti, D. (2016). *Cities alive: towards a walking world*. Retrieved from <https://trid.trb.org/view/1416692>
- Clark, A. F., Scott, D. M., & Yiannakoulias, N. (2014). Examining the relationship between active travel, weather, and the built environment: a multilevel approach using a GPS-enhanced dataset. *Transportation*, 41(2), 325–338. <https://doi.org/10.1007/s11116-013-9476-3>
- Delclòs-Alió, X., & Miralles, C. (2018). Looking at Barcelona through Jane Jacobs's eyes: Mapping the basic conditions for urban vitality in a Mediterranean conurbation. *Land Use Policy*, 75, 505–517. <https://doi.org/10.1016/j.landusepol.2018.04.026>

References

- ▶ Fishman, E., Böcker, L., & Helbich, M. (2015). Adult Active Transport in the Netherlands: An Analysis of Its Contribution to Physical Activity Requirements. *PLOS ONE*, 10(4), e0121871. <https://doi.org/10.1371/journal.pone.0121871>
- ▶ Gerike, R., Nazelle, A. de, Nieuwenhuijsen, M., Panis, L. I., Anaya, E., Avila-Palencia, I., ... Consortium, on behalf of the P. (2016). Physical Activity through Sustainable Transport Approaches (PASTA): a study protocol for a multicentre project. *BMJ Open*, 6(1), e009924. <https://doi.org/10.1136/bmjopen-2015-009924>
- ▶ Helbich, M., Emmichoven, M. J. Z. van, Dijst, M. J., Kwan, M.-P., Pierik, F. H., & Vries, S. I. de. (2016). Natural and built environmental exposures on children's active school travel: A Dutch global positioning system-based cross-sectional study. *Health & Place*, 39, 101–109. <https://doi.org/10.1016/j.healthplace.2016.03.003>
- ▶ Hirsch, J. A., DeVries, D. N., Brauer, M., Frank, L. D., & Winters, M. (2018). Impact of new rapid transit on physical activity: A meta-analysis. *Preventive Medicine Reports*, 10, 184–190. <https://doi.org/10.1016/j.pmedr.2018.03.008>
- ▶ Huertas-Delgado, F. J., Herrador-Colmenero, M., Villa-González, E., Aranda-Balboa, M. J., Cáceres, M. V., Mandic, S., & Chillón, P. (2017). Parental perceptions of barriers to active commuting to school in Spanish children and adolescents. *European Journal of Public Health*, 27(3), 416–421. <https://doi.org/10.1093/eurpub/ckw249>
- ▶ Inchley, J., World Health Organization, & Regional Office for Europe. (2017). *Adolescent obesity and related behaviours: trends and inequalities in the who european region, 2002-2014 : observations from the Health Behavior in School-aged Children (HBSC) WHO collaborative cross-national study*. Retrieved from http://www.euro.who.int/__data/assets/pdf_file/0019/339211/WHO_ObesityReport_2017_v3.pdf?ua=1

References

- ▶ Medina, C., Janssen, I., Campos, I., & Barquera, S. (2013). Physical inactivity prevalence and trends among Mexican adults: results from the National Health and Nutrition Survey (ENSANUT) 2006 and 2012. *BMC Public Health*, 13(1), 1063. <https://doi.org/10.1186/1471-2458-13-1063>
- ▶ Montgomery, J. (1998). Making a city: Urbanity, vitality and urban design. *Journal of Urban Design*, 3(1), 93–116. <https://doi.org/10.1080/13574809808724418>
- ▶ Murata, M., Campos, J. D., & Lastra, M. S. (2017). ¿Por qué la gente no usa el Metro? Efectos del transporte en la Zona Metropolitana de la Ciudad de México. *Investigaciones Geográficas*, 0. <http://dx.doi.org/10.14350/ig.56661>
- ▶ Niculaie, N. I., & Álmos, A. (2018). Active commuting to Faculty pilot study. Retrieved 5 April 2019, from <http://web.b.ebscohost.com/abstract?site=ehost&scope=site&jrnl=14534223&AN=135221675&h=3gTaSaj6Q0v8L5PmQ2MMKNjAbQxwufB1NVkhdw8YZxclZZh1c78SJjWWGsgL6oFINAwLmJrQi%2bdskMDDEcyTBQ%3d%3d&crl=c&resultLocal=ErrCrlNoResults&resultNs=Ehost&crlhashurl=login.aspx%3fdirect%3dtrue%26profile%3dehost%26scope%3dsite%26authtype%3dcrawler%26jrnl%3d14534223%26AN%3d135221675>
- ▶ Segura-Díaz, J. M., Herrador-Colmenero, M., Martínez-Téllez, B., & Chillón, P. (2015). Efecto de la precipitación y el periodo estacional sobre los patrones de desplazamiento al centro educativo en niños y adolescentes de Granada. *Nutrición Hospitalaria*, 31(3), 1264–1272. <https://doi.org/10.3305/nh.2015.31.3.8282>

References

- ▶ Talavera Garcia, R., Valenzuela Montes, L. M., & Soria Lara, J. A. (2018). Evaluating the influence of the quality of walking distance on the coverage of light rail stops in Granada (Spain). *Boletín De La Asociación De Geógrafos Españoles*, (79), 2472. <https://doi.org/10.21138/bage.2472>
- ▶ Talavera-Garcia, R., & Valenzuela-Montes, L. M. (2018). Conceptual Analysis of Walking Distance to Transit: Towards a More Integrative Approach. *Ace-Architecture City and Environment*, 13(37), 183-+. <https://doi.org/10.5821/ace.13.37.5134>
- ▶ Tao, S., Corcoran, J., Rowe, F., & Hickman, M. (2018). To travel or not to travel: 'Weather' is the question. Modelling the effect of local weather conditions on bus ridership. *Transportation Research Part C: Emerging Technologies*, 86, 147–167. <https://doi.org/10.1016/j.trc.2017.11.005>
- ▶ UITP. (2018). *Integrating mobility health impact in decision-making* (p. 8) [Policy brief]. Retrieved from Union International des Transport Publics website: <https://www.uitp.org/sites/default/files/cck-focus-papers-files/Policy%20Brief%20-%202018%20-Web.pdf>
- ▶ UITP. (2019, April 7). Better than a diet: public transport enables active and healthy lifestyles. Retrieved 22 April 2019, from UITP website: <https://www.uitp.org/news/better-diet-public-transport-enables-active-and-healthy-lifestyles>
- ▶ Villa-González, E., Ruiz, J. R., & Chillón, P. (2015). Associations between Active Commuting to School and Health-Related Physical Fitness in Spanish School-Aged Children: A Cross-Sectional Study. *International Journal of Environmental Research and Public Health*, 12(9), 10362–10373. <https://doi.org/10.3390/ijerph120910362>



HEALTHY CITIES - EXPERT PANEL
ESCUELA ANDALUZA DE SALUD PUBLICA
APRIL 26TH - GRANADA, SPAIN



Thank you for your attention

ochoagabriela@correo.ugr.es

PhD student

Department of Urban and Territorial Planning
University of Granada.