

Maxillariella vulcanica

(F. LEHM. & KRAENZL.) M. A. BLANCO & CARNEVALI
LANKESTERIANA 7: 530. 2007

Synonyms: *Maxillaria vulcanica* F. Lehm. & Kraenzl. Bot. Jahrb. Syst. 26(5): 484. 1899.

Type: Ecuador. Tunguragua, 1500–2000 m. *F. C. Lehmann 8103* (holotype: B, destroyed; fragment: HBG; isotypes: K, LE, US).

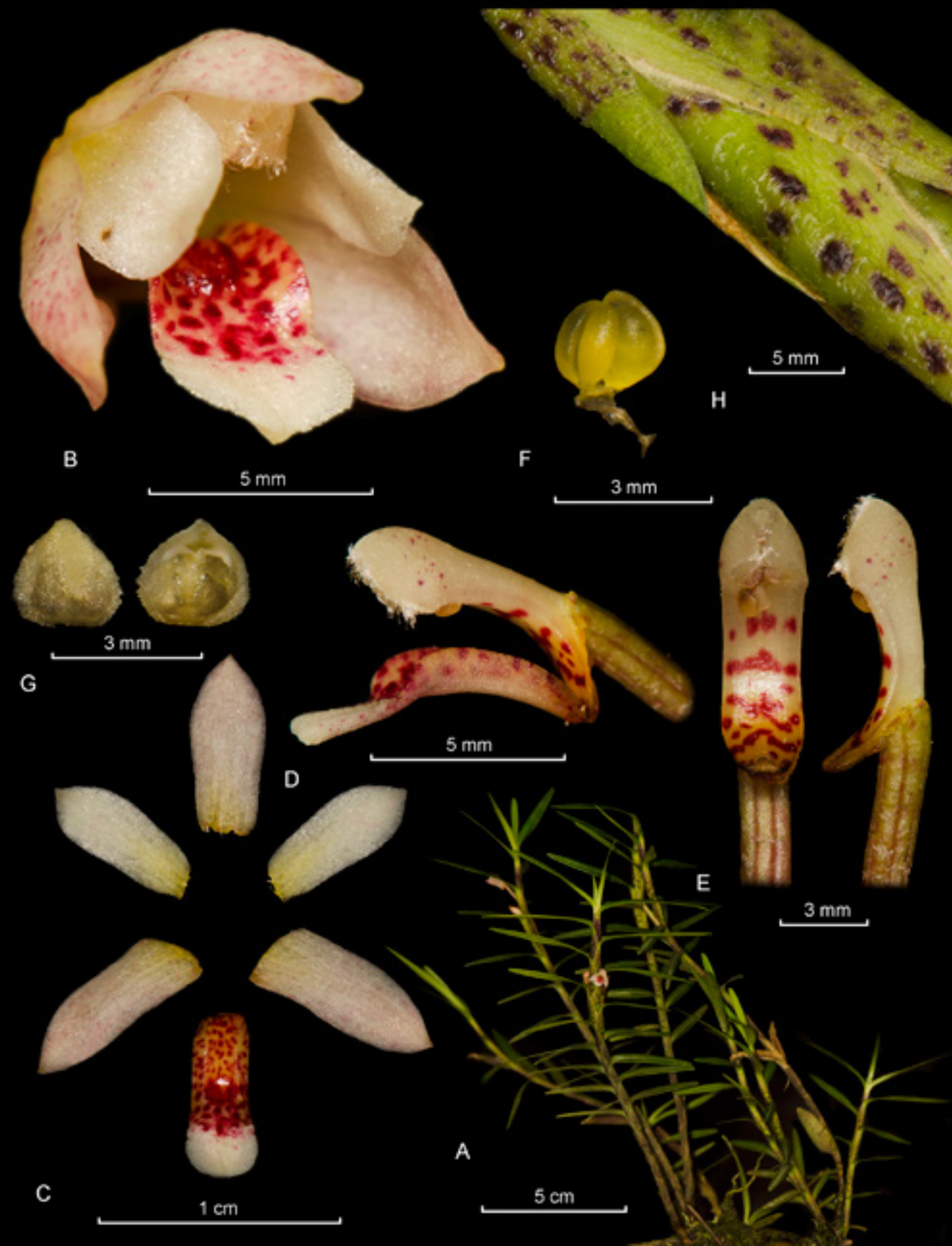
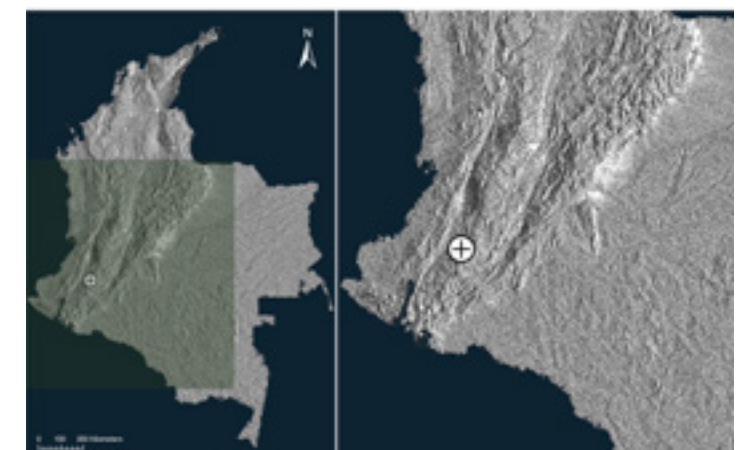
Illustrated specimen: Colombia, Cauca, Central Cordillera, Popyán, Rio Blanco, 1700 m, Cultivated in Finca La Elvira, Nursery Angulorquideas. *J.F. Restrepo 304* as *Maxillaria arbuscula* (CAUPI)

Plant epiphyte. *Stems* slender, cane-like, imbricating, branching. *Pseudobulbs* ellipsoid, purple spotted, 1.8–2.0 × 0.6–0.7 cm. *Leaves* 2.5–3.75 × 0.5 cm, linear, acute, unequally bilobed, distichous; *sheaths* with red-purple spots. *Inflorescence* axillar, subsessile, 1.3–1.8 cm long. *Flowers* white, diversely suffused and spotted with pink successive, single, campanulate, globose. *Ovary* 6–7 × 1.5–1.7 mm. *Sepals* 8–8.5 × 3–3.5 mm, oblong, ovate, concave, obtuse, red-purple spotted on the adaxial side. *Petals* 7 × 3–3.5 mm, obtuse, elliptic, with few red-purple spots. *Lip* 7–7.5 × 3 mm, ligulate-elliptic, shallowly trilobed, lateral lobes incurved, mid-lobe broad, obtuse, with a conspicuous callus close to the middle of the lip, oblong, raised, with 2 ridges, rigid. *Column* 6.75–7 × 3 mm, slightly curved, clavate, thickened towards the apex, with red-purple spots in the middle and the apex, dark-red towards the apex, clinandrium fringed. *Anther cap* papillose, 2 mm wide. *Pollinia* 4, dark yellow, obovoid.

Maxillariella vulcanica is recognized by the ascending habit, slender cane-like stems bearing few, ellipsoid pseudobulbs. The flowers are white, diversely suffused and spotted with pink, the lip bears a conspicuous callus near the middle, and the column is prominently fringed apically. It was previously known from Ecuador and Peru, and is here recoded for Colombia as well.

References:

Christenson, Eric A. 2013. *Maxillaria*, an unfinished monograph. Robert Christenson. USA.



LCDP: *Maxillariella vulcanica* (F. Lehm. & Kraenzl.) M. A. Blanco & Carnevali. **A.**Habit. **B.** Flower. **C.** Dissected perianth. **D.** Column and lip. **E.** Column, side and dorsal view. **F.** Pollinia. **G.** Anther cap. **H.** Leaf sheaths.

