

Andinia pseudocaulescens

(L.B.SM. & S.K.HARRIS) KARREMANS & S.VIEIRA-URIBE

PHYTOTAXA 295 (2): 125. 2017

Synonyms: *Lepanthes pseudocaulescens* L.B.Sm. & S.K.Harris, Bot. Mus. Leaf. 2(3): 33. 1934.
Brachycladium pseudocaulescens (L.B.Sm. & S.K.Harris) Luer, Monogr. Syst. Bot. Missouri Bot. Gard. 103: 308. 2005.
Oreophilus pseudocaulescens (L.B.Sm. & S.K.Harris) Archila, Selbyana 29(2): 206. 2008[2009].
Neooreophilus pseudocaulescens (L.B.Sm. & S.K. Harris) Archila, Revista Guatemal. 12(2): 86. 2009.
Penducella pseudocaulescens (L.B.Sm. & S.K.Harris) Luer, Orchid Digest 74(2): 71. 2010.

Type: Colombia. Dept. of Cauca: highlands of Popayán, alt. 1400-1800 m, July 1901, *F.C. Lehmann B.T. 352* (holotype, GH; isotypes, AMES, G).

Illustrated specimen: Colombia. Antioquia: Valdivia. En árbol de potrero junto a la carretera a Briceño. 1800 m, 3 de enero 2011, *S. Vieira 028, N. Peláez* (JAUM; LCDP voucher).

Plant epiphytic, pendent, up to 15 cm long or longer. *Stem* 3.0–4.0 mm long between ramicauls, each segment enclosed by two imbricating, infundibular sheaths, with a ciliate dilated ostia. *Roots* slender, ca. 0.5 mm in diameter. *Ramicauls* ca. 1 mm long, enclosed by a single infundibular sheath with ciliate dilated ostia. *Leaves* green, suffused with purple along the veins, ovate to elliptical, thickly coriaceous, ciliate, obtuse, 7.0-7.5 × 4.5-5.0 mm, the base narrowing into a petiole less than 0.2 mm long. *Inflorescence* a congested, successively few flowered raceme; borne by a slender peduncle ca. 0.8 mm long; ovary costate, ca. 0.9 mm long. *Dorsal sepal* burgundy, ovate, shortly acuminate, 3-veined, 4.2-4.4 × 2.8-3.0 mm, connate to the lateral sepals for about 0.3 mm. *Lateral sepals* burgundy, suffused with orange near the base, ovate, slightly oblique, acuminate, 2-veined, 4.1-4.3 × 2.2-2.4 mm, basally connate for about 0.3 mm. *Petals* 0.5-0.6 × 3.0 mm, transversally bilobed, the lobes oblong to narrowly triangular, the upper lobe burgundy, pubescent, 1.7 mm long; the lower lobe orange, ciliate, uncinata, 1.3 mm long. *Lip* orange, marginally suffused with burgundy, lunate, cellular ciliate, 3-veined, embracing the column, cuneate at the base, adnate to the base of the column, obtuse, with incurved, acute basal lobes, 1.2 × 2.0 mm when expanded. *Column* green, terete, the anther and stigma apical, ca. 2.0 mm long including the rostellum; the ros-

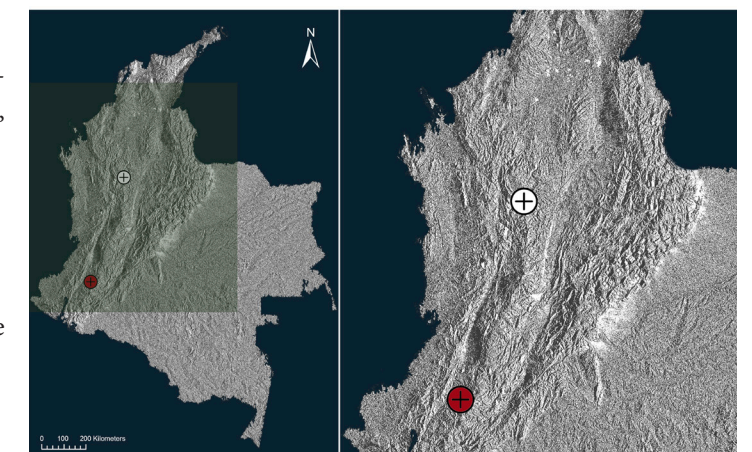
tellum antrorse, conspicuous. *Pollinia* two, yellow, ovoid, brought together by a drop-like viscidium. *Anther cap* cream spotted with burgundy, cucullate.

Andinia pseudocaulescens has a wide distribution and has been found on all three Cordilleras in Colombia as well as in Ecuador. It frequently grows together with other species of *Andinia* subgen. *Brachycladium* (Luer) Karremans & S.Vieira-Urube, but can be recognized by the small plants with elliptical leaves that are marginally ciliate, the burgundy flowers almost as big as the leaves, borne on short inflorescences, with ovate, acuminate sepals, and transversally bilobed, pubescent petals with narrowly oblong lobes.

References:

Luer, C. A. 1994. Icones Pleurothallidinarum XI. Systematics of *Lepanthes* subgenus *Brachycladium* and *Pleurothallis* subgenus *Aenigma* subgenus *Elongatia* subgenus *Kraenzlinella*. *Monogr. Syst. Bot. Missouri Bot. Gard.* 52: 38-41.

Wilson, M., Frank, G.S., Jost, L., Pridgeon, A.M., Vieira-Urube, S., Karremans, A.P. 2017. Phylogenetic analysis of *Andinia* (Pleurothallidinae; Orchidaceae) and a systematic re-circumscription of the genus. *Phytotaxa* 295(2): 101-131.



LCDP: *Andinia pseudocaulescens* (L.B.Sm. & S.K.Harris) Karremans & S.Vieira-Urube. A. Habit. B. Leaf. C. Inflorescence. D. Flower. E. Dissected perianth. F. Lip, side view. G. Ovary and column, side view. H. Ovary, column and lip, dorsal and side view. I. Anther cap and pollinia.

