

# *Prosthechea mejia*

(WITHNER & P.A.HARDING) W.E.HIGGINS  
SELBYANA 29: 214. 2009

**Synonyms:** : *Anacheilium mejia* Withner & P.A.Harding, *Cattleyas* & Relatives: Debatable Epidendrums: 101. 2004.

**Type:** Colombia. Hort. *Mejia de Moreno s.n.* (holotype: US).

**Illustrated specimen:** Colombia, Tolima: Roncesvalles, vía entre Rovira y Roncesvalles, 1400 m. November 2018, *Milton Rincón González 481* (TOLI; LCDP Voucher).

Epiphytic, creeping, erect *herb*, creeping, rhizome separating growths up to 8 cm, 50 cm tall including the inflorescence. *Roots* fibrous. *Pseudobulb* long spindle-like, slightly compressed, up to 20 cm long. *Foliar sheath* 1, deciduous or persistent. *Leaves* 2 per pseudobulb, long elliptic, dark green, 20–30 × 1.0–2.5 cm. *Floral spathe* 2–10 cm long, brown. *Inflorescence* 20–40 cm long, terminal. *Pedice*l 2 cm. *Ovary* 1 cm, three sided, three low wings laterally. *Flowers* numerous 10–20, long lasting, non-resupinate, patent; sepals and petals dull yellow to yellow-green, red-brown blotches at base; lip white, dark purple centrally, sparing margins; callus white; column green at base becoming white, dark maroon blotches at base. *Sepals* 1.0–1.5 × 0.3 cm, lanceolate, acute. *Petals* 1.0–1.5 × 0.3 cm, spatulate, narrow. *Lip* obscurely three lobed, lateral lobes oblong, medial lobe oval, apex acute; callus two parallel lamella with a central sulcus at their bases, distally flattening be slightly raised from lip medial lobe. *Column* short 2.5 mm long, fused to lip base 2 mm, base hollowed out, apex with lateral wings and apical teeth equal, dorsal tooth with ligule. *Clinandrium* semicircular, bilobed, apical, rostellum with central thickening, bi-toothed ventrally. *Anther cap* 4-celled. *Pollinia* 4, obovoid, equal, stipe 1 mm, viscidium small.

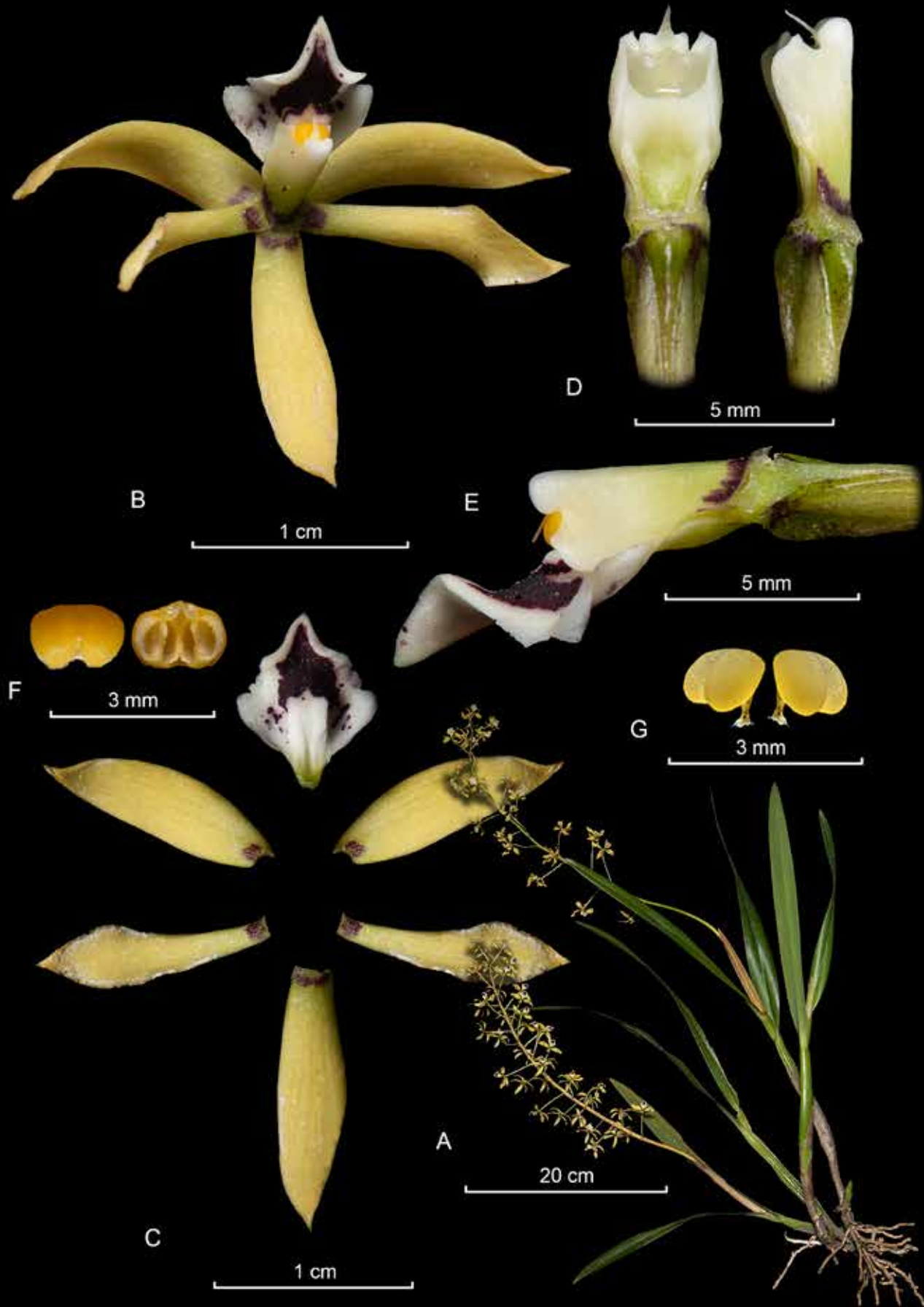
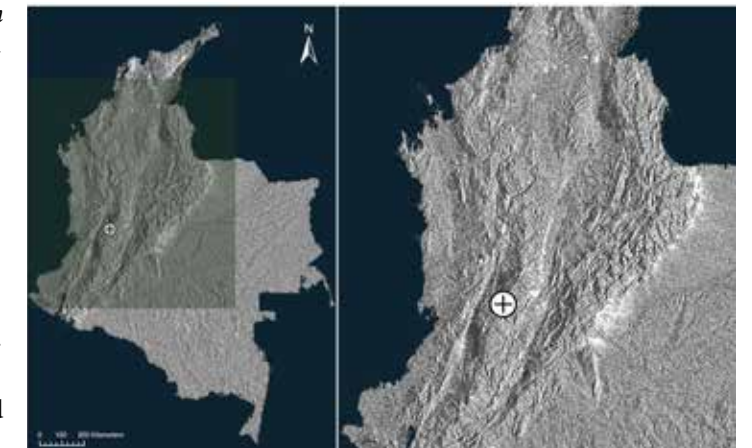
*Prosthechea mejia* is easily recognized by its multi-flowered inflorescence with distinctly colored flowers and a lip that is white with a dark purple central blotch. The closest relative is *P. spectra* (Lindl.) W.E.Higgins, with fewer flowers, yellow with many purple spots on the sepals and petals, and lighter purple on the lip. *Prosthechea vita* (D.G.Hunt, Withner & P.A.Harding) J.M.H.Shaw, described at the same time as *P. mejia*, is based on a plant obtained

from Ecuagenera. The artist prepared the original drawings of *P. mejia* from a desiccated specimen and that of *P. vita* from a flower in liquid. At the time of description they appeared different, but the cultivated plants which served as types have continued flowering in Patricia Harding's personal collection and are undoubtedly the same species.

#### References:

Higgins, W. E. 2008. New Combinations in *Prosthechea* Knowles & Westc. (Orchidaceae). *Selbyana* 29(2): 214.

Whitner, C.L. & Harding, P.A. 2004. *The Cattleyas and their relatives Vol. VII : The Debatable Epidendrums*. 300 p.



LCDP: *Prosthechea mejia* (Withner & P.A.Harding) W.E.Higgins. A. Habit. B. Flower. C. Dissected perianth. D. Column, side and ventral view. E. Ovary with column and lip. F. Anther cap. G. Pollinia.

