



Reanalyses of Maskelyne's tidal data at St. Helena in 1761

Philip L. Woodworth and John M. Vassie

National Oceanography Centre, Joseph Proudman Building, 6 Brownlow Street,
Liverpool, L3 5DA, United Kingdom

Correspondence: Philip L. Woodworth (plw@noc.ac.uk)

Received: 24 June 2022 – Discussion started: 5 July 2022

Revised: 5 September 2022 – Accepted: 6 September 2022 – Published: 26 September 2022

Abstract. The construction of an electronic data set of the tidal measurements made at St. Helena in 1761 by Nevil Maskelyne is described. These data were first analysed by Cartwright (1971, 1972) in papers which have importance within studies of changing tides. However, Cartwright's data files were never archived for the benefit of other researchers, demonstrating that “old data” at risk can sometimes take the form of electronic rather than paper records. In the present paper, the newly digitised Maskelyne data have been reanalysed by several techniques in order to obtain an updated impression of whether the tide has changed at that location in over two and a half centuries. This new data set may be found via <https://doi.org/10.5285/e66db85a-eaae-6665-e053-6c86abc0bfb9> (Woodworth and Vassie, 2022). Our main conclusion, consistent with that of Cartwright, is that the major tidal constituent (M2) has changed little. However, the results of the various techniques demonstrate how difficult it is to obtain reliable conclusions for the smaller constituents.

1 Introduction

Almost 50 years ago, David Cartwright investigated whether the ocean tide at St. Helena had changed since 1761, with his findings reported in two papers (Cartwright, 1971, 1972). This was an interesting piece of work at the time but has gained additional importance since then, given our present understanding that the ocean tide has been changing in recent decades in many parts of the world (Woodworth, 2010). There are many possible reasons for such changes in the tide, of which change in water depth due to climate change is the most obvious (Haigh et al., 2020). Consequently, there is a lot to be learned on this subject, with a re-examination of historical data being especially important.

The comparison of the modern and historical tides at St. Helena was made using a year of high- and low-water data at Ascension Island in 1958–1959 in order to provide a reference tide for the use of the response method in analyses of the short tidal records available from St. Helena. Ascension lies 1300 km northwest of St. Helena but can be considered “nearby” in the context of the ocean tide response to astronomical forcing. Cartwright himself had been one of the

developers of the response method (Munk and Cartwright, 1966). The modern tide at St. Helena was determined by means of Cartwright's own tidal measurements there for 39 d in 1969, while the historical tide was calculated from measurements made by Nevil Maskelyne for over a month in 1761, both data sets analysed using the response method and the Ascension reference record.

A listing of Maskelyne's tidal measurements at St. Helena is given at the end of Maskelyne (1762), as shown in Fig. 1. Although Cartwright must have spent a lot of time putting these measurements into electronic form, it is impossible for anyone to readily repeat his work now because he did not lodge his files in a data centre. Back in 1971 there was no culture of depositing data sets in centres such as the British Oceanographic Data Centre (BODC) or even of providing supplementary material for a paper.

“Data reanalysis” comes into this discussion because we wanted to see if we would obtain the same findings as Cartwright, should the Maskelyne data be made available electronically once again, especially given the present interest in changing tides (Haigh et al., 2020). As a result, a summary of our own conclusions on the tides at St. Helena, based

1761.				
Day of observation.	Apparent time.	The height in divisions and tenths.	No. of observations.	N. B. The height is set down according to the divisions on the post, each of which is 3 inches.
Nov. 12.	8 56 A. M.	1, 2	L 17	
	9 32 A. M.	1, 8	34	
	9 52 A. M.	2, 2	18	
	10 37 A. M.	4, 0	16	
	10 58 P. M.	11	16	
	2 27 P. M.	12, 4	H 55	
	3 29 P. M.	12	18	
	3 49 P. M.	11, 3	16	
	4 32 P. M.	9, 4	20	
	8 26 P. M.	1	L	
	9 54 P. M.	2, 2		
Nov. 13. High surf.	6 45 A. M.	4, 8	38	
	7 24 A. M.	3, 3	36	
	7 57 A. M.	2, 5	12	
	9 21 A. M.	1, 5	L 12	
	9 32 A. M.	2, 0	20	
	1 26 P. M.	10, 9	28	
	3 21 P. M.	13, 3	H 22	
	3 54 P. M.	12, 8	26	
	6 35 P. M.	6, 3	20	

Figure 1. The start of the table of measurements of sea level at St. Helena in 1761 to be found at the end of Maskelyne (1762).

on analyses of Maskelyne's data set, compared to those of Cartwright is given below.

2 The Maskelyne data set

The first person to make tidal measurements at St. Helena was the Rev. Nevil Maskelyne, Astronomer Royal 1765–1811. Maskelyne's reason for visiting the island was to observe the time of the transit of Venus on 6 June 1761, an objective that was prevented by the cloudy weather. His exercise in tide recording, from 12 November to 22 December 1761, must have compensated somewhat for the failure of that main objective.

As explained by Cartwright et al. (2017), knowledge of the tide was still rudimentary in 1761. Newton had shown that the main characteristics of the ocean tide followed from his gravitational theory. However, there was a lack of observational data from which one could learn more about tidal dynamics, especially from remote island locations. St. Helena was certainly remote but had one major drawback, in that its exposure to swell waves made it difficult to observe the modest tidal rise and fall (the mean tidal range is approximately 1 m).

Maskelyne managed to largely eliminate the effect of swell waves by reading from a graduated vertical staff many times over the course of a few minutes and recording the average

reading: "I therefore generally made 40 or 50 observations, and sometimes more than 100, if the rise and fall of the water seemed very irregular". The resulting averages traced out a smooth tidal curve, and simultaneous readings by Maskelyne and his assistant Charles Mason agreed consistently to better than half an inch (12 mm). (Mason is better known as the leading surveyor of the Mason–Dixon line and for the measurement of a degree of latitude in North America.) Their observations were made for all states of the tide between 12 November and 22 December 1761, except for a short interruption when the swell damaged the vertical staff.¹

The resulting measurements can be found in a table at the end of Maskelyne (1762), and the present exercise involved the typing of those numbers into a single ASCII computer file. That file, called "maskelyne_data", has a format which is essentially the same as Fig. 1. It consists of spot measurements of heights at particular times, all of which come from Maskelyne's table apart from a couple of errors which Cartwright pointed out in a footnote at the bottom of Cartwright (1971, p. 617). In these cases, we have used the Cartwright numbers instead. The times corresponding to each tide level are given as hours and minutes, and the levels themselves are in "divisions and tenths", where one division is 3 in. Also shown is the number of separate instantaneous estimates of height made rapidly by Maskelyne over several minutes, averaged and recorded to the nearest minute. There are some days which are almost complete, with measurements of tide level around the clock. However, as pointed out in Cartwright (1971), in the latter part of the data set, the measurements are increasingly in daylight hours (Fig. 2). Cartwright (1971) should be consulted for further explanation of how Maskelyne came to make his measurements and for additional details about them, while the header of "maskelyne_data" contains more detailed information about the file itself. Section 5 mentions the locations from which this new data file might be obtained.

Before comparing our findings with those of Cartwright in the next sections, we can point to several remarks in his papers to do with the data that we have concerns about.

- On page 617 of Cartwright (1971) he says "Each sea level [measured by Maskelyne] was the mean of up to 100 or more observations at different states of the swell over several minutes, and recorded against the mean time to the nearest 1/4 min."

¹It is certainly possible to make visual measurements of "still water level" to that accuracy using a tide staff (tide pole) in relatively calm conditions, by averaging visually over the incidence of swell waves. Similar tide poles continue to be used today to check the performance of modern tide gauges (IOC, 2016). One has at this point to assume that Maskelyne's staff was vertical, with no scale errors in the conversion of its "divisions and tenths" into modern units. Unfortunately, the zero of Maskelyne's staff was not related to a land benchmark, so the historical data are not useful to studies of long-term sea level change.

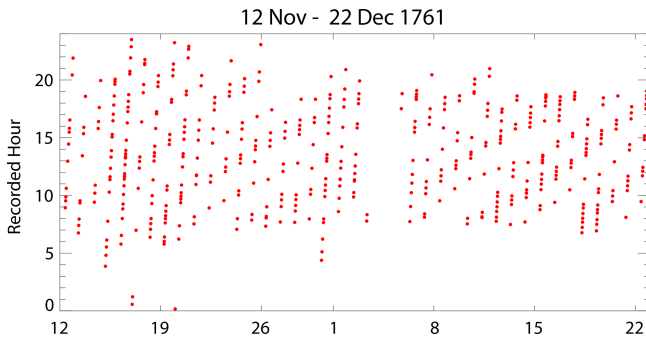


Figure 2. The recorded (local) times of Maskelyne's measurements. Some measurements were made around the clock in the earlier part of the data set. However, they can be seen to be restricted to daylight hours in the latter part.

One can see from Maskelyne's table that there were certainly some sea level measurements obtained from over 100 separate observations. However, that was the case for only 10 of the measurements out of 478 in total. Normally, there were only a few tens of observations. Therefore, it seems that this sentence of Cartwright (1971) overstates the quality of Maskelyne's data somewhat.

In addition, it is not clear where the "mean time to the nearest 1/4 min" statement came from. Maskelyne (1762, pp. 589–590) says "I always looked at my watch before I began to note the height of the water, and looked at it again when I had finished the experiment; the medium of the two times I set down as the true time of the observation. The times set down are exact to the minute".

- The first footnote on Cartwright (1971, p. 617) says "I was unable to detect any sensible change in datum after the pole was re-set".

This is a reference to the entry in Maskelyne's table showing that the tide pole was damaged on 3 December and that Maskelyne put it back on 5 December saying "The post was set up again as near the former height as could be judged". However, as discussed below, there is some evidence for a datum shift of about 2 or 3 cm either side of this event, and this datum shift significantly impacts the determination of changes in the diurnal tides in particular.

- There are also some additional minor inconsistencies. For example, there were 40 d with measurements as stated in Cartwright (1971, p. 617). They spanned 41 d (12 November–22 December) with a day with no data on 4 December. However, in Cartwright (1972, p. 337) he implies that the span was 42 d. And in his table on p. 338, he says he used only 39 d of data which "exclude certain lacunae [gaps] in the data". But the only gap was the 4 December one. If he used only 39 d, it is not obvious which day of the 40 he dropped; there were many days shown as having high surf which he might have been rejected otherwise.

- Finally, p. 617 contains a long paragraph concerning what the longitude was of the clock used by Maskelyne and Mason. While this paragraph is interesting, it does not really seem relevant to the present comparison of historical and modern tides. Even if there was an uncertainty of 0.1° in longitude as he suggests, that propagates into uncertainties of only $0.1/0.2^\circ$ in the calculation of the phase lags of diurnal/semidiurnal tides, which is well within any realistic uncertainty in a comparison.

3 Data reanalyses

3.1 Time corrections to Maskelyne's measurements

Before a comparison can be made between the modern and historical tides, it is necessary to convert Maskelyne's times to Greenwich mean time (GMT), in a similar way to Cartwright (1971). Maskelyne's times were local apparent (sun dial) times, derived from measurements of local meridian transits of the sun using a transit telescope, with the aid of a clock to interpolate times between measurements. As Cartwright (1971) explains, the precision of these measurements could not be bettered since the work was undertaken alongside frequent astronomical checks as part of a study by Maskelyne of the going of clocks in different latitudes.

First, we adjusted for longitude using the same value (5.718° W) used for the study of Manuel Johnson's data at St. Helena in 1826–1827 (Cartwright et al., 2017).² All such historical measurements of the tide at St. Helena have been made at the landing steps in Jamestown Bay, as they continue to be made to this day. Then, we corrected for the differences between local apparent and mean times due to the sun not always being on the Equator, the difference being called the equation of time (EOT), using EOT values from the 1795 *Nautical Almanac*.

We used EOT values from the 1795 edition of the *Almanac* because we happened to have a copy available. The *Nautical Almanac* was first published in 1767, and so it did not exist in 1761, so we had to use EOT values for not too different a later year. Fortunately, 1761 and 1795 were both non-leap years, and their EOT values should be very similar as any changes in the EOT over only 3 decades will be negligible; as a confirmation, we checked that the small differences in the EOT over two centuries between 1795 and 1991 in the tables we used were the same as those shown in Hughes et al. (1989). The resulting total time corrections for each day (i.e. longitude and EOT) were very similar to those listed in Table 5 of Cartwright (1971).

²It was not possible to include in the present study information on the tide at St. Helena based on the Manuel Johnson measurements in 1826–1827 as they were not of sufficient quality for examining small changes in the tide through the years; see Cartwright et al. (2017) for details.

Table 1. Amplitudes (H , cm) and Greenwich phase lags (G , °) of the main tidal constituents (TCs) in the STHL4.X set and their origins.

TC	H (cm)	G (°)	Origin
M2	32.49	80.04	Principal lunar semidiurnal
S2	11.39	101.96	Principal solar semidiurnal
K1	3.46	349.22	Principal lunar/solar diurnal
O1	2.08	190.65	Principal lunar
N2	6.69	70.88	Larger elliptical lunar semidiurnal

3.2 Initial comparison of modern and historical tides

In order to make our own comparison of the modern and historical tides, we initially made use of a set of 62 tidal constants derived from a record of subsurface pressure (SSP) at St. Helena spanning 1 year (October 1995–October 1996). This set is called STHL4. It contains constants for 5 long-period, 18 diurnal, 20 semidiurnal and 19 higher-frequency constituents. Although the record is of SSP and not real sea level, there is not much difference between the constants that would be obtained from the two as the product of density and acceleration due to gravity (ρg) happens to be almost exactly 1.0 at St. Helena. This was confirmed by comparison to another set of constants for real sea level during 1993–2006, computed by Richard Ray for the Manuel Johnson study (Cartwright et al., 2017).

However, there was the expected difference for S2 (the main solar semidiurnal tide) which has an amplitude of 10.25 in STHL4 and 11.39 cm in Ray's set. That can be explained by the S2 air tide at St. Helena having an amplitude of 1.1 mbar and a phase lag which is almost opposite that of sea level (Ray, 1998). As a result, S2 in SSP has an amplitude about 1 cm smaller than in sea level.

Therefore, for present purposes we defined a new set of constants based on STHL4 but with those for S2 taken from Ray's set. For consistency, we also replaced those for S1 by Ray's, although this has an amplitude of only 1.4 mm, consistent with Fig. 3 of Ray and Egbert (2004). This set of 62 harmonic coefficients is called STHL4.X. The amplitudes (H) and Greenwich phase lags (G) of the five main constituents (TCs) and their origins (see Pugh and Woodworth, 2014) are listed in Table 1. (A full list of the harmonic coefficients in STHL4 and STHL4.X can be found in the Supplement).

One obvious thing to point out is how small the diurnal tides are at St. Helena and, therefore, how difficult it would be to decide reliably on any changes in them from one epoch to another, even if one had a longer historical data set than Maskelyne's measurements of over a month and with irregular timing. Our findings, and those of Cartwright (1971) to be discussed below, should be considered with this reservation in mind.

The STHL4.X harmonics were used to make 1 min predictions of the tide for 1761 from which we picked out values at exactly the same times as Maskelyne's measurements.³ These are called "predicted" values, although "hindcasted" would probably be a better description (Cartwright's expression for them was a "tidal synthesis"). There are then 478 of them corresponding to the same number of Maskelyne values.

Figure 3a shows the time series of 1 min predicted heights from 12 November–22 December together with the Maskelyne sea levels shown by red dots. The two sets of values have been adjusted to have zero mean. It can be seen that many of Maskelyne's measurements took place around high or low tide as was his intention (Maskelyne, 1762). However, there were also many measurements around mid-tide. Figure 3b focusses on a subset of data for 15–20 November, demonstrating the general good correspondence of predicted heights and Maskelyne's measurements.

Figure 3c shows sea level differences (Maskelyne – predicted) with the overall mean difference removed. One can see that there is an apparent datum shift at the time that Maskelyne's tide pole was damaged on 3 December and replaced on 5 December. Determining the size of a datum shift is difficult when the shift is comparable to the variability in the record due to fluctuations in the ocean water properties (especially temperature) and to meteorological effects, and it is sometimes difficult even deciding if there is a shift at all. However, simple inspection suggests a shift of about 2.8 cm at that time, estimated from the difference between the average sea level differences either side of the gap. Figure 4a shows that after adjustment for the shift, the predicted and Maskelyne sea levels values correspond satisfactorily (as in fact do the unadjusted values given that 2.8 cm is a small amount compared to the tidal range). Figure 4b shows that the sea level differences have no major dependence on tidal level.⁴

An important issue at this point is that Cartwright (1971) did not believe that there was any evidence for a datum shift. Therefore, his findings were based on an analysis of the complete Maskelyne data set without consideration of either a datum shift or the possible importance of long-period tides (which in this case amounts to much the same thing). We

³These predictions assume the same nodal variations for the lunar tides as in the equilibrium tide, which is a reasonable assumption for an ocean island location. The end of 1761 is anyway not at a time of nodal maximum or minimum, so any uncertainty arising from this assumption will be small.

⁴The apparent larger scatter at high and low waters than at mid-tide in Fig. 4a, which is counter-intuitive as measurements are normally more accurate at the turning points than at mid-tide when the water level is changing rapidly, is an artefact of there being more measurements at the high and low water levels. The standard deviation of Maskelyne – predicted levels in Fig. 4b is 3.2, 3.0 and 3.0 cm for bands of predicted level –60 to –20, –20 to 20 and 20 to 60 cm respectively.

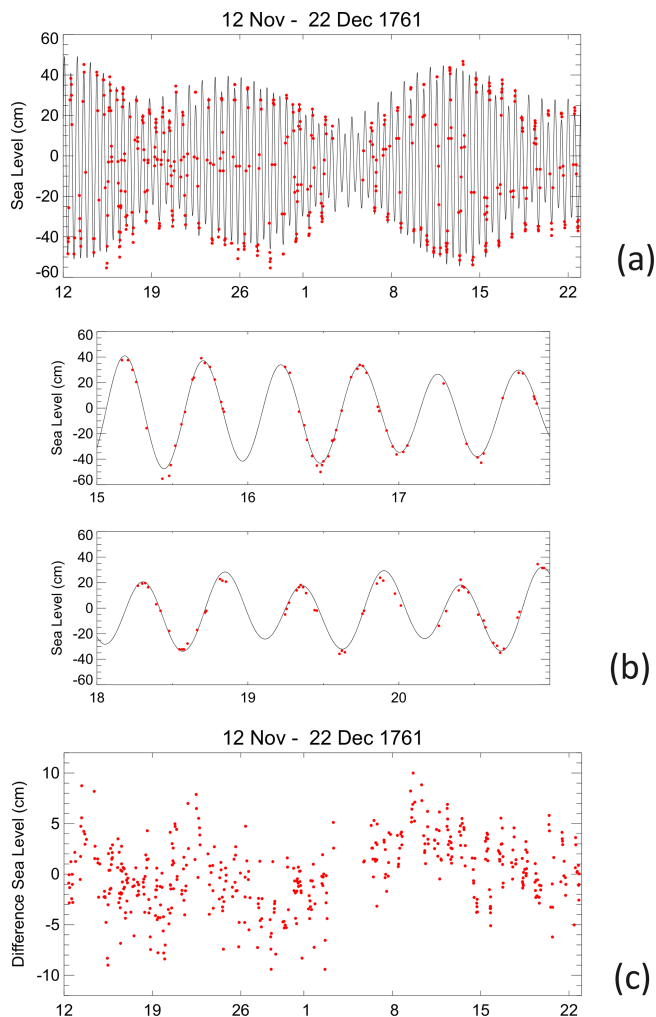


Figure 3. (a) 1 min predicted heights for 12 November–22 December 1761 together with the Maskelyne sea levels shown by red dots. The two sets of values have been adjusted to have zero mean. (b) A subset of (a) focussing on 15–20 November 1761 which corresponds to Fig. 4 of Cartwright (1971), although the predicted tide will be slightly different in the two cases, and a couple of outlying Maskelyne's measurements shown here appear not to have been used by Cartwright. Before and after the 6 d shown, the observations of Maskelyne are mostly confined to daylight hours. (c) Sea level differences (Maskelyne – predicted) with the overall mean difference removed.

made a considerable number of tests using predictions based on STHL4.X of whether findings on the tidal composition of Maskelyne's data could be affected by his irregular temporal sampling and/or by a datum shift and/or by long-period tides. There were too many tests to be described in detail in this short note, but our general conclusion was that a datum shift of 2–3 cm or the presence of long-period tides (or not) would not significantly impact the determination of the main semidiurnal tides (M2 and S2) but would be important for the diurnals, with uncertainties of about 10% in their am-

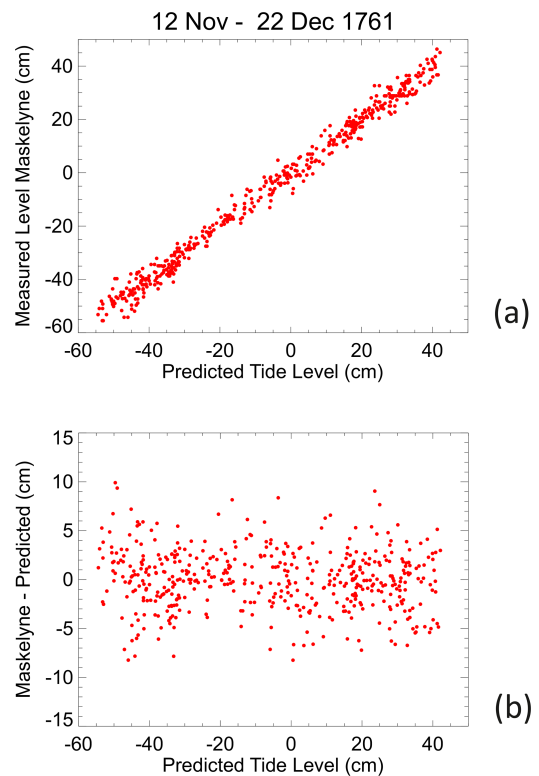


Figure 4. (a) Predicted and Maskelyne sea level values after datum shift adjustment. (b) Sea level differences (Maskelyne – predicted) after datum shift correction showing no major dependence on tidal level.

plitudes. These initial tests informed our choice of methods employed in the next sections.

3.3 New harmonic tidal analysis (first method)

The next question is how to analyse more rigorously the modern and historical (i.e. predicted and Maskelyne) measurements in order to see how the tide might have differed between the two epochs. To do that, a form of harmonic analysis was devised involving harmonic fitting to the two sets of 478 heights. The obvious drawback to such a fit is that the data are not regularly spaced in time, so an initial concern was that fits could be biased towards the earlier days with many measurements. However, the residuals of the fits described below look much like those of Fig. 3c, with similar earlier and later residual variances. Therefore, this seems not to be the case.

Several variants of harmonic fits were tried, and what seems to be the best is described here. This considered just five main constituents (M2, S2, K1, O1 and N2) as it was believed that the available data justified using no more than that. N2 was included in its own right, rather than as a related constituent, because it is so large (amplitude of almost 7 cm

and larger than either K1 and O1), and in theory it should be determined adequately with a month of data.

Several other harmonics were included as related constituents. These included K2 and T2 related to S2, P1 related to K1, Q1 related to O1, and NU2, 2N2 and MU2 related to N2. Each of the related constituents were required to have amplitudes relative to the main constituents in proportion to those in STHL4.X and differences in phase lags to those of the main constituents also as in STHL4.X but with related amplitudes and phase lags adjusted for the nodal cycle as appropriate for the end of 1761.

Various tests were made to ensure the following: (i) that the method and program code perform as required and (ii), as mentioned above, that the irregular sampling of the 478 Maskelyne times does not in itself unduly bias the determined amplitudes and phases for the main constituents, especially the semidiurnals. The fit thereby contains 10 parameters for the five main constituents and an optional 11th parameter to represent the possible datum shift on 4 December.

Changes were made before making these fits to both the predicted and Maskelyne data considered previously in Sect. 3.2, in order to remove the complications of long-period tides from both of them. This involved a simple change for the predicted data, in that we used only 57 of the 62 harmonics in STHL4.X (i.e. without the five long-period components Sa, Ssa, Mm, MSf and Mf).

For Maskelyne's data, the contributions of Mm, MSf and Mf to the measurements were removed using values from the finite element solution (FES) 2014 model (Lyard et al., 2021). Of these, Mf is the most important and MSf the least important. The model has H (cm) and G ($^{\circ}$) values of 1.49 and 358.64 for Mf, 0.69 and 355.46 for Mm, and 0.020 and 209.15 for MSf respectively. Corrections for the seasonal constituents Sa and Ssa were not made as it was decided that they were unlikely to be important. A period of 8 years of monthly mean sea level (MSL) values for St. Helena in the Permanent Service for Mean Sea Level (PSMSL) data set (Holgate et al., 2013) indicated that November levels were on average only 11 mm above December levels but could vary between +36 and -15 mm. Therefore, given that we also had no way to correct for daily and weekly changes in MSL, no monthly MSL adjustments were made.

The results when including the 11th parameter in the two fits to predicted and Maskelyne data were as in Table 2a. AR is the ratio of historical to modern amplitudes, and PHLD is the historical phase lag minus modern phase lag. The fit to predicted values suggested a possible datum shift of -0.2 cm, consistent with zero, as expected as of course the predicted time series has no shift in it. On the other hand, the fit to the historical Maskelyne values resulted in 1.4 cm for the possible datum shift. This is a smaller shift than obtained in the initial look at the data in Sect. 3.2; accounting for the long-period tides in the Maskelyne data using the FES2014 model values reduced its estimated amount.

The fits indicate that there has been no change to the main semidiurnal tides (M2 and S2), although N2 is suggested to be 15 % smaller in the historical tide. On the other hand, they suggest that K1 had only 84 % of its modern value in historical times, and there was a 12 % larger historical O1. These departures of the amplitudes of the historical diurnals from their modern values of approximately 10 % are consistent with the anticipated biases arising from the various tests with STHL4.X mentioned above.

However, if one believed there to be no datum shift, as in Cartwright (1971), then fits using 10 parameters only result in the values shown in Table 2b. In this case, the M2 and S2 semidiurnal tides appear to be much the same in the two epochs, with S2 just a few percent smaller in the historical data. However, it results in historical K1 being only 72 % of its modern value which is less plausible, while historical O1 is suggested to have been 8 % larger. These two sets of results demonstrate how sensitive the findings for the diurnals are to whether or not there was a small datum shift, even if only centimetric.

3.4 New harmonic tidal analysis (second method)

As explained above, a problem with analysing the Maskelyne data set is the irregular temporal sampling of his measurements. Therefore, in order to provide a more conventional time series for use in a second form of harmonic analysis, use was made of the predicted tide in order to interpolate at 1 min intervals between Maskelyne's measurements, applying linear adjustments to the predictions between consecutive Maskelyne measurements so as to correspond faithfully to the original data when available. There is obviously some danger in this approach, particularly for calculation of the diurnal tides, given that many of the later Maskelyne measurements were during daytime only. Therefore, there is a possibility of some information content from the predicted tide passing into the interpolated Maskelyne tide. However, in spite of these reservations, it was decided that this approach offered an interesting alternative method. The predicted tide in this case was taken from a set of 62 harmonics called STHL2, calculated from an SSP record at St. Helena, spanning November 1993 to February 1995. Its five main constituents have amplitudes and phase lags as shown in Table 3. (A full list of the harmonic coefficients in STHL2 can be found in the Supplement.) These STHL2 values are almost identical to those of STHL4, but the amplitude of S2 is 0.914 of that in STHL4.X for the air tide reasons explained in Sect. 3.2.⁵

⁵A reviewer asked why we chose to use a different set of constants (STHL2) in this section instead of the STHL4.X used earlier, or the set derived from data during 1993–2006 mentioned above. The fact is that the two authors of this paper started on their analyses using their individually chosen sets of data that were happy with as to their tidal information content. In practice, it does no harm to

Table 2. (a) Values of ratio of historical to modern amplitudes (AR) and historical phase lag minus modern phase lag (PHLD, °) when including an 11th parameter in the fits to predicted and Maskelyne data by the first harmonic method (Sect. 3.3). (b) Values of AR and PHLD when not including an 11th parameter in the first harmonic method. (c) Values obtained using the second harmonic method (Sect. 3.4).

(a)									
M2		S2		K1		O1		N2	
AR	PHLD	AR	PHLD	AR	PHLD	AR	PHLD	AR	PHLD
0.994	−0.50	0.992	1.263	0.841	1.758	1.124	9.613	0.846	−0.463
(b)									
M2		S2		K1		O1		N2	
AR	PHLD	AR	PHLD	AR	PHLD	AR	PHLD	AR	PHLD
0.992	−0.690	0.961	1.817	0.719	−6.029	1.080	12.021	0.841	−0.812
(c)									
M2		S2		K1		O1		N2	
AR	PHLD	AR	PHLD	AR	PHLD	AR	PHLD	AR	PHLD
0.997	−0.48	1.040 [0.951]	2.35	0.938	8.23	0.952	−5.38	0.935	−1.4

Table 3. Amplitudes (H , cm) and Greenwich phase lags (G , °) of the main tidal constituents (TCs) in the STHL2 set.

TC	H (cm)	G (°)
M2	32.37	79.92
S2	10.41	99.57
K1	3.49	349.71
O1	2.03	187.89
N2	6.67	70.87

Using STHL2 results in a time series of 59 040 predicted 1 min values between 12 November and 22 December 1761 and a separate time series of Maskelyne values interpolated using STHL2. Each of these was analysed using a conventional monthly tidal analysis containing 27 independent constituents including two long-period constituents (Mm and MSf) and 8 related constituents with relationships to corresponding independent constituents taken from those in STHL2. Findings were as shown in Table 2c, again suggesting similar semidiurnal tides (M2 and S2) in modern and historical times, although the AR value for S2 slightly larger than 1.0 converts to 0.951 once correction for the different S2 amplitudes in SSP and real sea level is allowed for (shown by the square brackets). There were smaller historical diurnal tides than modern ones and smaller N2.

This tidal analysis results in interesting findings for the two long-period tides. These are calculated to have amplitudes (cm) for Mm of 3.143 (historical) and 0.577 (predicted)

use different sets as it provides a feel for the stability of present-day constants.

and for MSf of 2.597 (historical) and 2.016 (predicted). However, as noted above, the amplitude of the real Mm at St. Helena is only 0.69 cm, if one assumes the FES2014 model to be correct. It turns out that the much larger amplitude of Mm obtained in the analysis of the historical data than that of the predicted data, together with its phase lag, is consistent with simply parameterising the possible datum shift discussed in Sect. 3.3 in a different way.

In summary, the results of this second harmonic analysis for the main semidiurnal tides are essentially identical to those of the first harmonic method in Sect. 3.3. In addition, both tend to suggest smaller historical diurnal tides than modern ones, although this second harmonic method suggests more stable K1 and O1 than the first method does.

3.5 New response analysis

In a further type of tidal analysis, we attempted to reproduce the work of Cartwright (1971) by modifying the response analysis software which Cartwright used for the analysis of short records (Cartwright, 1969).

Unfortunately, the version available to us did not work with randomly spaced data and had to be modified to do so and rewritten in the Delphi language. It filters a reference time series with six bandpass filters: diurnal, semidiurnal and ter-diurnal, each having a real and conjugate part. In addition, the original version of the software lags the reference data by 2 d relative to the observations and applies the same filters. As a result, there are 12 band-passed series in total. The software then calculates a covariance matrix between a reference series and the data under investigation, and response weights are calculated relative to these 12 series. For present purposes, we extended the method to employ reference se-

ries that also lead the observations by 2 d, thereby making the analysis symmetrical, resulting in 18 band-passed reference series in all. The data themselves were not filtered.

We applied the program to the Maskelyne data using St. Helena predictions as a reference, derived from STHL2 as described above. As regards the dominant M2 constituent, findings indicate $AR = 0.992$ and $PHLD = -0.11^\circ$. Meanwhile, AR for S2 = 0.972 after allowance for the air tide and $PHLD = 4.19^\circ$. However, findings for the small diurnal tides were unsatisfactory, yielding historical amplitudes only about 60 % of their modern ones, which is less plausible.

These results are not perfect but provide confidence in the findings using the harmonic methods, at least for the M2 constituent. The sparse Maskelyne data, and their daylight bias, are likely to be the major reasons for what appears to be the poor performance of the response method for the diurnals.

4 Comparisons of Cartwright's and our own analyses

Cartwright (1971) used a complicated form of response method (described earlier in Cartwright, 1969), allowing for measurements at arbitrary fractions of an hour so as to accommodate the irregular times of Maskelyne's measurements, and using data from Ascension Island as a reference record in the method. Unfortunately, those Ascension data are no longer available, and there are details of his method which are hard to follow. Therefore, it is impossible to reproduce Cartwright (1971) in all respects. The best we can do at this stage is to make our own analyses and see if our main conclusions agree with his.

Cartwright (1971) decided that the 1761 M2 tide amplitude was 0.98 of the modern value (or 0.984 by a different method) and that the historical phase lag was 2.9° (or 2.39° by the different method) less than now. We present these in Table 4 in the same form as Table 2.⁶ These are almost the same as the conclusions for M2 in Sect. 3.3 when allowing for a datum shift or not. They are also consistent with the M2 findings in Sect. 3.4. Cartwright concluded that his PHLD values were indistinguishable from zero given the noise in the records.

In the case of S2, he stated that “the trends are almost exactly reversed [compared to M2]”. Cartwright used a pressure sensor for his 1969 measurements, as we did later for STHL2 and STHL4, but his 1971 paper makes no mention of the complication of the S2 air tide. However, the amplitude given for S2 in his Table 2 is 11.2 cm, which indicates that, for one reason or other, he believed that the amplitude of S2 in the ocean tide at this location was essentially the same as we have used in STHL4.X, as discussed in Sect. 3.2.

⁶We believe we have the correct signs for PHLD in this table: Cartwright chose to work with phase leads rather than lags.

In the present study, the first harmonic method of Sect. 3.3 showed that if one allows for the datum shift or not, then the “reverse S2 trend” is indeed the case for phase lag, although the historical S2 amplitude is a little smaller than today, as for M2, rather than a little larger as Cartwright obtained. That is the same conclusion as for the second harmonic method in Sect. 3.4 once the air tide is allowed for. It cannot be important to agonise about the very small changes in S2 amplitude. That would require unreasonable assumptions concerning the accuracy of Maskelyne's measurements: for example, on the accuracy of the 3 in. graduations of the tide pole and an assumption that it was perfectly vertical. In addition, there was the inevitable complication of making accurate tidal measurements in the frequent presence of high surf. Similar to Cartwright, we do not believe there is any significance in the “reverse trend” for S2 phase lag, given the variability in the records, consistent with PHLD near zero for both of the main semidiurnals.

The diurnals are more problematical. Cartwright (1971) considered that the historical amplitudes of the diurnals were 1.0 and 0.85 times the present ones for K1 and O1 respectively with both historical phase lags about 13° larger. In a second method, he considered both historical amplitudes to be about 95 % of the present ones, with historical phase lags 9° larger.

The phase lag findings of Cartwright (1971) are consistent with those of the first harmonic method in Sect. 3.3 when allowing for a datum shift, with phase lags larger in historical times (although not by as much as 13°). On the other hand, the first method has smaller/larger historical amplitudes for K1/O1, compared to similar or slightly smaller historical amplitudes for both constituents in Cartwright (1971). If one does not allow for a datum shift, the first method again suggests smaller/larger historical amplitudes for K1/O1 but PHLD values moving in opposite directions unlike in Cartwright (1971).

The conclusions on the diurnals from the second harmonic method of Sect. 3.4 are consistent with Cartwright (1971), in there being historical amplitudes a few percent smaller than today, although the phase lags for K1 and O1 move in opposite directions in the second method unlike in Cartwright (1971). One notes the large Mm obtained in Sect. 3.4 from the interpolated Maskelyne data is consistent with the datum shift considered in Sect. 3.3. Our own attempt at response analysis in Sect. 3.5 supported the case for essentially unchanged semidiurnal tides.

Some differences in findings between this report and Cartwright (1971) are to be expected for several reasons. One important aspect concerns the data sets that he had available, which were a year of high and low water levels at Ascension in 1958–1959, 39 d of his own measurements at St. Helena in 1969 and of course Maskelyne's measurements in 1761. On the other hand, we have about 3 decades of continuous sea level measurements from St. Helena, acquired through the South Atlantic programme of the National Oceanography

Table 4. Values of ratio of historical to modern amplitudes (AR) and historical phase lag minus modern phase lag (PHLD, °) obtained in the two methods of Cartwright (1971).

	M2		S2		K1		O1	
	AR	PHLD	AR	PHLD	AR	PHLD	AR	PHLD
Method 1:	0.98	−2.9	1.02	2.9	1.0	13.0	0.83	13.0
Method 2:	0.984	−2.39	1.016	2.39	0.95	9.1	0.95	9.1

Centre (Cartwright et al., 1988; Spencer et al., 1993). Those records, from which STHL4.X and STHL2 were derived, are of much higher quality than those of Cartwright (1971).

Second, the methods used to analyse the data are different. Cartwright used the Ascension record as a reference in a response analysis involving his 1969 data and Maskelyne's data. On the other hand, we have used two forms of harmonic analysis and our own response method. Less important, in his analysis it seems that Cartwright did not include the several measurements that Maskelyne himself flagged as “doubtful” or “very doubtful” because of swell conditions, whereas we have used all 478 of Maskelyne's measurements in our analyses.

Third, there is the question of whether or not there really was a datum shift on 4 December 1761. Cartwright (1971) did not believe there was any evidence for a “sensible change in datum”, but the present work has shown that there probably was a small shift. It is possible that the filters Cartwright used in his response method resulted in his analysis being less sensitive to a small shift. However, that seems not to be the case when using the harmonic method. Although findings on changes in the main semidiurnal tides (M2 and S2) are largely unaffected, consideration of the shift does have an impact on findings for the diurnal tides. Unfortunately, the shift happens in almost the middle of the 40 d of measurements, and splitting the data sets into two and analysing them separately, as one might do with a longer record, is not a suitable option.

5 Data availability

The small file “maskelyne_data” referred to above can be accessed via <https://doi.org/10.5285/e66db85a-eaae-6665-e053-6c86abc0bfb9> (Woodworth and Vassie, 2022). The file has also been deposited with the British Oceanographic Data Centre in which it has accession number POL200133. Any information on the tidal analyses made in this study may be obtained from both authors.

6 Conclusions

To sum up, the headline results of Cartwright (1971) were that the semidiurnal tides had not changed at St. Helena since 1761, that the amplitudes of the diurnals were on balance

slightly smaller than today and that they had a phase lag about 10° larger in 1761. Both of our new analyses agree qualitatively with those conclusions for the semidiurnals: we believe historical and modern M2 to be essentially the same and that the S2 amplitude was a couple of percent smaller in historical times. On the other hand, one notes big differences between methods in Tables 2 and 4 for the diurnals which result from the difficulties of analysing the short Maskelyne data set. As a result, we would be more hesitant to claim any changes at all in either the semidiurnal or diurnal tides. In retrospect, one wonders why Cartwright chose to focus on the apparent changes in phase of the diurnals that he obtained, given that his own discussion at the top of p. 619 shows that their phase lag difference of approximately 10° was only a 2 σ effect.

The findings of Cartwright (1971) were important ones that have been referenced in major reviews of “tides a-changin” (e.g. Haigh et al., 2020). However, from the perspective of “old records for new knowledge”, his study also serves as an important example that electronic data sets can be as much at risk as paper records. His own measurements at St. Helena in 1969 can no longer be found, while his version of the 1958–1959 high- and low-water record at Ascension and, of course, the Maskelyne data at St. Helena are also missing.⁷ Therefore, it is good at least that a data set of the historical St. Helena measurements made by Maskelyne in 1761 is once again available for any researcher to investigate. It has been interesting to make our own analyses from that recovered data set, confirming Cartwright's main findings on the similarity of the predominant M2 constituent in the historical and modern data from St. Helena.

Supplement. A supplement to this paper is available containing a full list of harmonic constants in STHL4, STHL4.X and STHL2. The supplement related to this article is available online at: <https://doi.org/10.5194/essd-14-4387-2022-supplement>.

⁷Cartwright obtained the 1958–1959 Ascension high- and low-water data from the US Coast and Geodetic Survey (USCGS), so it is probable that a version of this data set is archived by a US centre. Cartwright (1971) also mentions a month of hourly sea levels from Ascension in 1959 that was obtained from the USCGS. The latter does not appear to have been used in the Cartwright (1971) study; if required, a manuscript copy of that short record may be obtained from the present authors.

Author contributions. PLW undertook the data rescue aspect of this work. Both PLW and JMV performed the data analyses and prepared the manuscript.

Competing interests. The contact author has declared that none of the authors has any competing interests.

Disclaimer. Publisher's note: Copernicus Publications remains neutral with regard to jurisdictional claims in published maps and institutional affiliations.

Acknowledgements. We thank Richard Ray and David Pugh for comments on an earlier version of this article. Richenda Houseago-Stokes of the British Oceanographic Data Centre is thanked for setting up the DOI for the Maskelyne data set.

Review statement. This paper was edited by Giuseppe M. R. Manzella and reviewed by Laurent Testut and Giuseppe M. R. Manzella.

References

- Cartwright, D. E.: Some further results of the "response method" of tidal analysis, Proceedings of the International Hydrographic Bureau Symposium on Tides held in Monaco, April 1967, UNESCO publication, 195–202, 1969.
- Cartwright, D. E.: Tides and waves in the vicinity of Saint Helena, *Philos. T. R. Soc. London, A*, 270, 603–649, <https://doi.org/10.1098/rsta.1971.0091>, 1971.
- Cartwright, D. E.: Some ocean tide measurements of the eighteenth century, and their relevance today, *P. R. Soc. Edinb. B: Biological Sciences*, 72, 331–339, <https://doi.org/10.1017/S0080455X00001892>, 1972.
- Cartwright, D. E., Spencer, R., Vassie, J. M., and Woodworth, P. L.: The tides of the Atlantic Ocean, 60N to 30S, *Philos. T. R. Soc. London, A*, 324, 513–563, <https://doi.org/10.1098/rsta.1988.0037>, 1988.
- Cartwright, D. E., Woodworth, P. L., and Ray, R. D.: Manuel Johnson's tide record at St. Helena, *Hist. Geo Space. Sci.*, 8, 9–19, <https://doi.org/10.5194/hgss-8-9-2017>, 2017.
- Haigh, I. D., Pickering, M. D., Green, J. A. M., Arbic, B. K., Arns, A., Dangendorf, S., Hill, D., Horsburgh, K., Howard, T., Idier, D., Jay, D. A., Lee, S. B., Müller, M., Schindelegger, M., Talke, S. A., Wilmes, S.-B., and Woodworth, P. L.: The tides they are a-changin': A comprehensive review of past and future nonastronomical changes in tides, their driving mechanisms and future implications, *Rev. Geophys.*, 57, e2018RG000636, <https://doi.org/10.1029/2018RG000636>, 2020.
- Holgate, S. J., Matthews, A., Woodworth, P. L., Rickards, L. J., Tamisiea, M. E., Bradshaw, E., Foden, P. R., Gordon, K. M., Jevrejeva, S., and Pugh, J.: New data systems and products at the Permanent Service for Mean Sea Level, *J. Coastal Res.*, 29, 493–504, <https://doi.org/10.2112/JCOASTRES-D-12-00175.1>, 2013.
- Hughes, D. W., Yallop, B. D., and Hohenkerk, C. Y.: The equation of time, *Mon. Not. R. Astron. Soc.*, 238, 1529–1535, <https://doi.org/10.1093/mnras/238.4.1529>, 1989.
- Intergovernmental Oceanographic Commission (IOC): Manual on sea-level measurements and interpretation (IOC Manuals and Guides No.14), Volume V: Radar Gauges, edited by: Woodworth, P. L., Paris, Intergovernmental Oceanographic Commission of UNESCO, 104 pp., <http://unesdoc.unesco.org/images/0024/002469/246981E.pdf> (last access: 1 September 2022), 2016.
- Lyard, F. H., Allain, D. J., Cancet, M., Carrère, L., and Picot, N.: FES2014 global ocean tide atlas: design and performance, *Ocean Sci.*, 17, 615–649, <https://doi.org/10.5194/os-17-615-2021>, 2021.
- Maskelyne, N.: Observations on the tides in the Island of St. Helena: in a letter from the Rev. Nevil Maskelyne, A. M. F. R. S. to Thomas Birch, D. D. Secretary to the Royal Society, *Philos. T. R. Soc.*, 52, 586–606, <https://doi.org/10.1098/rstl.1761.0100>, 1762.
- Munk W. H. and Cartwright, D. E.: Tidal spectroscopy and prediction, *Philos. T. R. Soc. London, A*, 259, 533–581, <https://doi.org/10.1098/rsta.1966.0024>, 1966.
- Pugh, D. T. and Woodworth, P. L.: Sea-level science: Understanding tides, surges, tsunamis and mean sea-level changes, Cambridge, Cambridge University Press, 408 pp., ISBN 9781107028197, 2014.
- Ray, R. D.: Diurnal oscillations in atmospheric pressure at twenty-five small oceanic islands, *Geophys. Res. Lett.*, 25, 3851–3854, <https://doi.org/10.1029/1998GL900039>, 1998.
- Ray, R. D. and Egbert, G. D.: The global S1 tide, *J. Phys. Oceanogr.*, 34, 1922–1935, [https://doi.org/10.1175/1520-0485\(2004\)034<1922:TGST>2.0.CO;2](https://doi.org/10.1175/1520-0485(2004)034<1922:TGST>2.0.CO;2), 2004.
- Spencer, R., Foden, P. R., McGarry, C., Harrison, A. J., Vassie, J. M., Baker, T. F., Smithson, M. J., Harangozo, S. A., and Woodworth, P. L.: The ACCLAIM programme in the South Atlantic and Southern Oceans, *Int. Hydrogr. Rev.*, 70, 7–21, 1993.
- Woodworth, P. L.: A survey of recent changes in the main components of the ocean tide, *Cont. Shelf Res.*, 30, 1680–1691, <https://doi.org/10.1016/j.csr.2010.07.002>, 2010.
- Woodworth P. L. and Vassie J. M.: Maskelyne sea level observations from the Island of St. Helena in 1761, NERC EDS British Oceanographic Data Centre NOC [data set], <https://doi.org/10.5285/e66db85a-eaae-6665-e053-6c86abc0bfb9>, 2022.