

Involvement of the extracellular matrix and integrin signalling proteins in skeletal muscle glucose uptake

Authors: F. Draicchio¹, V. Behrends¹, N. Tillin¹, N.M. Hurren¹, L. Sylow² and R. Mackenzie¹.

Affiliations: ¹School of Life and Health Sciences, University of Roehampton, Whitelands College, London, U.K.

²Molecular Metabolism in Cancer & Ageing Research Group,

Department of Biomedical Sciences, University of Copenhagen, Copenhagen, DK.

Abstract

Whole-body euglycaemia is partly maintained by two cellular processes that encourage glucose uptake in skeletal muscle; 1) the insulin- and 2) contraction-stimulated pathways, with research suggesting convergence between these two previously separate processes. The normal structural integrity of the skeletal muscle requires an intact actin cytoskeleton as well as integrin-associated proteins, thus those structures are likely fundamental for effective glucose uptake in skeletal muscle. In contrast, excessive extracellular matrix (ECM) remodelling and integrin expression in skeletal muscle may contribute to insulin resistance owing to an increased physical barrier causing reduced nutrient and hormonal flux (**Figure 1**). This review paper explores the role of the ECM and the actin cytoskeleton in insulin- and contraction-mediated glucose uptake in skeletal muscle. This is a clinically important area of research given that defects in the structural integrity of the ECM and integrin-associated

This is an Accepted Article that has been peer-reviewed and approved for publication in The Journal of Physiology, but has yet to undergo copy-editing and proof correction. Please cite this article as an 'Accepted Article'; doi: [10.1113/JP283039](https://doi.org/10.1113/JP283039).

This article is protected by copyright. All rights reserved.

proteins may contribute to loss of muscle function and decreased glucose uptake in type 2 diabetes.

key words: integrin, ILK, Rac1, ECM, actin cytoskeleton, muscle contraction, insulin, insulin resistance.

General Introduction

Glucose homeostasis involves a complex interplay and cross-talk between pancreatic β -cells and insulin-sensitive tissues such as skeletal muscle, adipose tissue, and the liver. This cross-talk is defective in Type 2 diabetes (T2D) due to a combination of failing β -cell function, reduced insulin sensitivity, and elevated endogenous glucose production (EGP) (Stumvoll *et al.*, 2005). Reduced insulin sensitivity is considered the starting point for the development of T2D, with β -cell dysfunction presenting at the latter stages of the progression from pre-diabetes to overt T2D (Stumvoll *et al.*, 2005). Human studies show that skeletal muscle is the primary site for insulin-mediated glucose disposal (DeFronzo *et al.*, 1985; Baron *et al.*, 1991a; Bouché *et al.*, 2004). Thus, a substantial amount of research has been directed towards understanding the molecular defects associated with insulin signalling in skeletal muscle to develop novel treatment strategies for conditions such as T2D. Yet, to date there are no drugs available that target skeletal muscle insulin resistance and therefore, it is key to clarify the underlying molecular mechanisms. As canonical insulin signalling has not presented optimal targets, lesser studied pathways, such as the actin cytoskeleton, extracellular matrix, and focal adhesions might present new opportunities.

The causes of insulin resistance and reduced insulin-stimulated glucose uptake in skeletal muscle are complex and likely involve disruptions to **1)** glucose delivery, **2)** transport across

the sarcolemma and **3**) glucose metabolism with defects in the intracellular protein networks contributing to failure of the second and third of these processes (Zick, 2001; Karlsson *et al.*, 2005; Mackenzie & Elliott, 2014). Importantly, and related to the three points above, mounting evidence in rodents and humans supports the notion that the actin cytoskeleton and extracellular matrix may play an important role in muscle glucose uptake and GLUT4 transport (Richardson *et al.*, 2005; Berria *et al.*, 2006; Huber *et al.*, 2006; Kang *et al.*, 2011, 2013, 2014; Dixon *et al.*, 2013; Inoue *et al.*, 2013; Wada *et al.*, 2013; Williams *et al.*, 2015). Moreover, the major extracellular matrix (ECM) surface receptors integrins, and their downstream effectors, are emerging as potential players in skeletal muscle insulin action and glucose uptake (Williams *et al.*, 2015). Therefore, understanding the role that integrin and its associated structural proteins plays in insulin action and glucose transport in skeletal muscle may be fundamental to identify new therapeutic targets for the treatment of insulin resistance and T2D. This review paper will outline and discuss the emerging evidence for the ECM and its associated integrin proteins playing a critical role in skeletal muscle glucose uptake.

The Canonical pathways responsible for facilitating glucose uptake in skeletal muscle

Skeletal muscle provides a large disposal site for both the oxidation and storage of glucose, making it a key tissue in the management of diseases such as T2D (DeFronzo *et al.*, 1982). The plasma membrane (PM) of the skeletal muscle fibre is unique in that it consists of the sarcolemma and the transverse tubules (T-tubules). In the absence of insulin, and at rest, muscle glucose transport likely occurs via glucose transporter (GLUT) 1 (Marette *et al.*, 1992b; Rudich *et al.*, 2003), localised constitutively at the sarcolemma.

In skeletal muscle, two key stimuli facilitate glucose uptake: **1)** insulin and **2)** contraction (Richter *et al.*, 1985; Wallberg-Henriksson & Holloszy, 1985; Lundell & Krook, 2013; Kjøbsted *et al.*, 2019; Holloszy, 2003). Yet rapidly evolving research reports significant overlap between contraction- and insulin-stimulated glucose transport, suggesting more convergence between these pathways (Wojtaszewski *et al.*, 1996; Cortright & Dohm, 1997; Kim *et al.*, 2021; Richter *et al.*, 2021; Ihlemann *et al.*, 2000). In addition, exercise is known to stimulate over 1,000 phosphorylation sites in human skeletal muscle, suggesting that there are a great number of regulators yet to be identified (SyLOW *et al.*, 2016). The T-tubules likely represent a major site of glucose transport in skeletal muscle, as the majority of GLUT4 mobilised in response to insulin inserts into the T-tubule membranes and only a smaller fraction into the sarcolemma in human and rodent muscle (Marette *et al.*, 1992a; Lauritzen, 2013; Knudsen *et al.*, 2020; Henríquez-Olguin *et al.*, 2019). Upon stimulation, GLUT4s translocate from GLUT storage vesicles (GSV) in the cytoplasm to the cell surface to facilitate glucose uptake across the sarcolemma (SyLOW *et al.*, 2021). The processes involved in GLUT4 trafficking have received a great deal of attention and have been reviewed elsewhere (Richter & Hargreaves, 2013, McConell *et al.*, 2020, Tunduguru and Thurmond, 2017; SyLOW *et al.*, 2017, 2021; Richter, 2021; Merz *et al.*, 2022); therefore, they will only be briefly outlined within this review.

Upon binding to its receptor, insulin initiates a cascade of events at the muscle cell membrane that results in the phosphorylation of insulin receptor substrate (IRS)-1 and the subsequent activation of phosphatidylinositol 3-kinase (PI3K) (SyLOW *et al.*, 2021). At this intersection, PI3K offers an important bifurcation point leading to two parallel signalling cascades required for GLUT4 translocation, one requiring the serine-threonine kinase Akt1/2 (Brozinick & Birnbaum 1998; Lund *et al.*, 1998; Wang *et al.*, 1999) and the other, the Rho

family GTPase Rac1 (JeBailey *et al.*, 2007; Sylow *et al.*, 2013; Sylow *et al.*, 2014; Ueda *et al.*, 2008; Sylow *et al.*, 2021). Downstream of Akt, the phosphorylation of TBC1 domain family member 4 (TBC1D4 or AS160) leads to TBC1D4 inhibition, and the subsequent release of the intracellular GSVs. Together with Rac1-mediated cytoskeletal reorganisation, these signalling pathways promote GLUT4 translocation and increased glucose uptake in response to insulin. The reader is referred to recent reviews (Sylow *et al.*, 2021).

Contraction of skeletal muscle also provides a potent mechanism for GLUT4 translocation and glucose uptake. This process is independent of insulin and seems to require, in part, AMP-activated protein kinase (AMPK) and Rac1 (Kjøbsted *et al.*, 2017; Sylow *et al.*, 2016; Kjøbsted *et al.*, 2019; Yue *et al.*, 2020; Hardie & Lin, 2017; Ito *et al.*, 2005). With cellular changes in energy status, and increased excitation-contraction coupling, both elevated Ca²⁺ and AMP:ATP ratios are known activators of AMPK (Rose & Richter, 2005; Jensen *et al.*, 2007; Hawley *et al.*, 1996; Hayashi *et al.*, 1998; Jensen *et al.*, 2014) resulting in TBC1D4Ser704 phosphorylation via the AMPK γ 3-containing complexes (Eickelschulte *et al.*, 2021; Blair *et al.*, 2009; Chen *et al.*, 2008; Chen *et al.*, 2011; Cheung *et al.*, 2000; Hardie & Carling, 1997), allowing for GLUT4 translocation to the cell membrane (Kjøbsted *et al.*, 2019). The reader is referred to recent reviews (Sylow *et al.*, 2017; Richter *et al.*, 2021). Emerging evidence suggests substantial cross-talk between these canonical pathways and the ECM in facilitating glucose transport in skeletal muscle, which will be outlined in the following sections.

Extracellular matrix (ECM) and Transmembrane Protein Structure

The extracellular matrix (ECM) network on the plasma membrane is linked to the intracellular cortical actin cytoskeleton in the cytoplasm through a nexus of proteins. These proteins include integrins, talin, vinculin, FAK, Arp 2/3, and Rac1 (DeMali *et al.*, 2002; Vicente-Manzanares *et al.*, 2009; Hsiao *et al.*, 2015; Csapo *et al.*, 2020; Delon & Brown, 2007), which are located downstream of the ECM and interact with the transmembrane integrins (**Figure 2**). The ECM is a dynamic structure, which consists of a network of proteins that modulate biological processes including insulin-stimulated glucose transport, cell migration, differentiation, development, and repair (Schuppan, 1990; Andez & Amenta, 1995; Haynes, 2009; Williams *et al.*, 2015). Moreover, the ECM is fundamental for cell-to-cell interaction as well as function and maintenance of all tissue (Mayer, 2003; Williams *et al.*, 2015). The fabrication of the ECM consists of over 300 proteins, with collagens, proteoglycans, laminin, integrins, elastin, and cell-binding glycoproteins forming the major elements of the ECM, each with distinct physical and biochemical properties (Hynes & Naba, 2011; Hall & Sanes, 1993).

Collagen (Col) is the most abundant ECM structural component and is essential for cell adhesion, migration, differentiation, wound healing, and morphogenesis (Aumailley & Gayraud, 1998; Kang *et al.*, 2011; Zutter & McCall-Culbreath, 2008). Moreover, collagens are required for tissue support and structural integrity (Aumailley & Gayraud, 1998; Kang *et al.*, 2011). Collagen I, III, and IV are the most abundantly expressed isoforms in mammalian skeletal muscle with the latter found mostly in the basement membrane (Yurchenco & Patton, 2009; Kang *et al.*, 2011).

Proteoglycans are protein structures that are heavily glycosylated, formed of a core protein with one or more glycosaminoglycan (GAG) side chains attached, and are discussed

elsewhere (Yue, 2014). Importantly for skeletal muscle, proteoglycans form a network with growth factors and growth factor receptors, including the insulin receptor (Ussar *et al.*, 2012; Morcavallo *et al.*, 2014; Ohta *et al.*, 2018) and are associated in cell signalling and biological processes, including angiogenesis (Yue, 2014), which may provide a role in promoting glucose transport and diffusion.

The Dystrophin-glycoprotein complex (DGC) is a large multicomponent membrane-spanning complex that binds extracellular proteins with intracellular non-contractile proteins (Langenbach & Rando, 2002; Barresi & Campbell, 2006), thus providing a physical structure between the basement membrane and the subsarcolemmal cytoskeleton (**Figure 2**). The central component of the DGC complex is the dystroglycan protein, consisting of two glycoprotein subunits, α and β (Ibraghimov-Beskrovnaya *et al.*, 1992; Holt *et al.*, 2000; Langenbach & Rando, 2002), with each playing a distinct role in muscle structure and stability, as already described elsewhere (Ervasti & Campbell, 1991; Ibraghimov-Beskrovnaya *et al.*, 1992). The α -dystroglycan, binds to the ECM via various laminin isoforms (laminin 1, 2, and 4) on one side, and the organisation of the cortical actin cytoskeleton on the other side, through β -dystroglycan (Ibraghimov-Beskrovnaya *et al.*, 1992; Holt *et al.*, 2000; Langenbach & Rando, 2002). β -dystroglycan is transmembrane protein bound to γ -actin via the large non-contractile protein dystrophin, located intracellularly (Ervasti & Campbell, 1991; Rybakova *et al.*, 2000; Langenbach & Rando, 2002; Michele & Campbell, 2003). Interestingly, the DGC plays a protective role in preventing actin depolymerisation (Ervasti, 2013). This is an important point given that actin depolymerisation and optimal actin reorganisation are needed for insulin- (SyLOW *et al.*, 2014; Brozinick *et al.*, 2004; JeBailey *et al.*, 2004; JeBailey *et al.*, 2007; SyLOW *et al.*, 2013) and contraction- (SyLOW *et al.*, 2012) mediated glucose uptake in skeletal muscle.

Integrins - The ECM communicates using transmembrane cell surface receptors known as integrins (Mayer, 2003). Laminin acts as a ligand for the integrin receptor (Grounds *et al.*, 2005), positioned at costameres and aligned with the Z-disks of the myofibrils (Csapo *et al.*, 2020). In forming a link between the ECM and the cytoplasm, integrins transduce signals across the plasma membrane and activates intracellular signalling including several downstream kinases that appear to be implicated in nutrient uptake and glucose metabolism (Williams *et al.*, 2015). Integrins are heterodimeric, transmembrane glycoproteins with an α and a β chain non-covalently associated (Mayer, 2003; Rahimov & Kunkel, 2013). Thus far, 18 α and 8 β chains have been identified, which combine to form at least 24 different dimers (Van der Flier & Sonnenberg, 2001; Mayer, 2003). The diversity of these proteins is increased by the expression of splice variants that generates sub-chains. Seven α subunits are expressed in skeletal muscle; $\alpha 1$, $\alpha 3$, $\alpha 4$, $\alpha 5$, $\alpha 6$, $\alpha 7$, and αV , all of which are linked to the $\beta 1$ integrin subunit (Williams *et al.*, 2015). Integrins are known to provide a bidirectional linkage between the ECM and the cytoskeleton, transferring external stimuli to regulate cellular processes while also allowing intracellular signalling proteins to contribute to external adhesion (Boppart & Mahmassani, 2019; Csapo *et al.*, 2020). Integrins lack endogenous enzymatic activity, so they are believed to form focal adhesions (FAs), composed of complex groups of downstream signalling molecules and proteins to provide a link to actin and microtubule cytoskeletons (Hynes, 2002; Schober *et al.*, 2007; Clemente *et al.*, 2012). Integrins form a structural linkage with the actin cytoskeleton including the actin-binding protein talin, which links to the β subunit of integrin, contributing to force development within the actin cytoskeleton (Gheyara *et al.*, 2007).

In the context of this review, it seems prudent to highlight the positioning of Rac1 within ECM-actin cytoskeleton arrangements given its central role in actin cytoskeleton remodelling

and GLUT4 translocation. In response to stimuli that generate membrane expansion, the actin-related protein 2/3 (Arp 2/3) complex binds to vinculin, an interaction regulated by phosphatidylinositol-4,5-bisphosphate (PIP₂) and Rac1 (**Figure 2**) (DeMali *et al.*, 2002). The activation of the Arp 2/3 complex by Rac1 and the Scar/WAVE proteins (Machesky & Insall, 1998; Miki *et al.*, 1998) results in the complex binding to actin (DeMali *et al.*, 2002). Importantly, the involvement of Rac1 in the linkage between integrin-talin-vinculin offers a clear network between the structural complements of skeletal muscle and the cellular processes involved in glucose transport activity.

Integrin-associated proteins and the actin cytoskeleton – implications for glucose uptake

Although the role of integrins and ECM-associated proteins in ECM remodelling and muscle cell integrity has been extensively characterised (Legate & Fässler, 2009; Wickström *et al.*, 2010; Draicchio *et al.*, 2020), little is known about the specific functions of the intracellular protein complexes within the context of muscle structural stability, and the regulation of insulin-stimulated cytoskeleton remodelling and glucose transport (Gheyara *et al.*, 2007; Draicchio *et al.*, 2020). It has been challenging to study the physiological role of integrins because it is difficult to recreate the complex ECM and cell-cell-junction environment *in vitro*, thus good model systems are still needed. Moreover, several of the key proteins involved in muscle structural stability seem to not have a catalytic activity (e.g., integrin b1 subunit, ILK, NCK).

Skeletal muscle actin cytoskeleton consists of β - and γ -actin. The actin cytoskeleton undergoes substantial reorganisation in response to insulin stimulation (Dugina *et al.*, 2009;

Kee *et al.*, 2009), in a Rac1-dependent manner via cofilin and Arp (Chiu *et al.*, 2010; JeBailey *et al.*, 2007; Sylow *et al.*, 2014), a process that mediates the very last steps of GLUT4 fusion with the PM (Brozinick *et al.*, 2004; Brozinick *et al.*, 2007). Accordingly, Rac1 is activated in response to insulin stimulation in skeletal muscle. Rac1 and the actin cytoskeleton likely act in parallel to Akt since individual inhibition of Rac1 or Akt partially decreased insulin-stimulated glucose transport by ~40% and ~60%. Yet, their simultaneous inhibition completely blocked insulin-stimulated glucose transport. Accordingly, the actin cytoskeleton depolymerising agent, LatrunculinB plus Akt inhibition blocked insulin-stimulated glucose uptake, while LatrunculinB had no additive effect on Rac1 inhibition.

Emerging evidence suggests that integrin and its associated downstream targets may play a fundamental role in glucose metabolism in skeletal muscle (Bisht *et al.*, 2008; Zong *et al.*, 2009; Graae *et al.*, 2019). This hypothesis is based on the following observations: 1) integrin-associated proteins and Rac1 seem to play a pivotal role in promoting actin remodelling that contributes to glucose uptake in skeletal muscle; 2) integrin-associated proteins provide an essential linkage between the ECM, the sarcolemma, and the actin cytoskeleton (Gheyara *et al.*, 2007; Draicchio *et al.*, 2020), therefore contributing to ECM structure stability, which may be necessary for normal nutrient transport in this tissue type (Gheyara *et al.*, 2007; Draicchio *et al.*, 2020).

Downstream integrin substrates include integrin-linked kinase (ILK), focal adhesion kinase (FAK) (Hynes, 2002; Schober *et al.*, 2007; Draicchio *et al.*, 2020), Akt, and Rac1 (Williams *et al.*, 2015; Draicchio *et al.*, 2020). The serine/threonine kinase ILK might be implicated in insulin-stimulated glucose transport. ILK complexes with PINCH and parvin forming the ILK-PINCH-parvin (IPP) complex, which functions at the earliest steps of integrin signalling (Wu, 1999; Stanchi *et al.*, 2009; Draicchio *et al.*, 2020). This complex links integrins to the actin

cytoskeleton through a number of insulin-sensitive downstream effectors, including parvin, α -actinin, talin, Arp2/3 and the PI3K-Akt-Rac1 pathway (**Figure 3A**) (Qian *et al.*, 2005; Gheyara *et al.*, 2007). ILK is ubiquitously expressed in mammalian tissues and has three distinct domains: 1) an N-terminus domain, 2) a pleckstrin homology (PH)-like domain, and 3) a C-terminal kinase-like domain (Stanchi *et al.*, 2009; Wickström *et al.*, 2010). ILK mediates its interactions with PINCH through the N-terminus domain, and parvin through the C-terminus domain (Legate *et al.*, 2006; Stanchi *et al.*, 2009; Wickström *et al.*, 2010).

ILK interacts directly with the β -integrin subunits and recruits downstream targets implicated in the insulin-stimulated glucose uptake pathway, via IRS-1/Akt as well as the actin cytoskeleton remodelling via Rac1 (Gheyara *et al.*, 2007; Draicchio *et al.*, 2020). Specifically, ILK seems to activate PDK1 and GSK-3 β through PINCH, therefore acting as an upstream regulator of Akt in skeletal and smooth muscle as well as other cell types (Wu & Dedhar, 2001; Qian *et al.*, 2005; Tang *et al.*, 2007; Williams *et al.*, 2015). In addition, ILK recruits the downstream effectors α -actinin and Rac1 through Parvin (Williams *et al.*, 2015; Draicchio *et al.*, 2020) (**Figure 3A**). This is likely implicated in promoting glucose uptake via cytoskeletal rearrangements because siRNA-mediated knockdown of ILK reduces Rac1 activation and cytoskeleton reorganisation in epithelial cells (Filipenko *et al.*, 2005).

The focal adhesion kinase (FAK), together with ILK and the IPP complex, appears to be another molecule that exert integrins' function towards the actin cytoskeleton (Williams *et al.*, 2015; Draicchio *et al.*, 2020). FAK is a non-receptor tyrosine kinase known to play an essential role in insulin signalling (Parsons, 2003; Huang *et al.*, 2006; Bisht *et al.*, 2007) via

PI3K and its downstream substrates Akt (Bisht *et al.*, 2008) and TBC1D4 (AS160) (Rondas *et al.*, 2012; Deshmukh *et al.*, 2006; Geraghty *et al.*, 2007) (**Figure 3A**). Once integrins are engaged and bind to the ECM, FAK is activated and interacts with the β 1 integrin subunits and other signalling and cytoskeletal molecules at the focal adhesion (FA) sites (Chen *et al.*, 2000; Schober *et al.*, 2007). In addition, reducing FAK expression in L6 myotubes reduced glucose uptake, GLUT4 translocation, p-FAK^{Tyr397}, and actin fibre rearrangements under maximal insulin stimulation (100 nmol/l) (Huang *et al.*, 2006). Under both control and maximal insulin treatment, glucose uptake and GLUT4 translocation were increased in C2C12 myocytes overexpressing FAK, implying that increased FAK protected C2FAK^{wt/+} (FAK overexpressing) cells from hyperinsulinaemia-induced insulin resistance, whereas C2FAK^{mut/+} (FAK tyrosine-397 mutated) cells developed insulin resistance. Furthermore, in the C2siRNAFAK^{wt}, (FAK siRNA cells) insulin-stimulated glucose uptake and GLUT4 translocation were significantly impaired under control and insulin treatment, supporting the notion that FAK elimination reduces glucose uptake and transport, likely as a consequence of impaired insulin signalling (Bisht *et al.*, 2007), perhaps via a reduction in FAK-mediated PI3K-Akt activation and TBC1D4 inhibition (Bisht *et al.*, 2008; Rondas *et al.*, 2012).

A potential role of extracellular matrix remodelling in diet-induced insulin resistance and reduced glucose uptake in muscle

Over the past decade, mounting evidence in humans (Berria *et al.*, 2006) and rodents (Kang *et al.*, 2011) suggests that increased ECM remodelling is associated with a number of pathological states, including insulin resistance in skeletal muscle. ECM proteins including fibronectin, proteoglycans, and connective tissue growth factors increase several fold in human (Richardson *et al.*, 2005; Berria *et al.*, 2006) as well as mouse skeletal muscles

(Huber *et al.*, 2007; Kang *et al.*, 2011, 2013 and 2014), adipose tissue (Inoue *et al.*, 2013) and liver (Wada *et al.*, 2013; Dixon *et al.*, 2013), in response to diet-induced obesity (DIO). High-fat diets are associated with chronic systemic inflammation (Tan & Norhaizan, 2019; Duan *et al.*, 2018), which increases ECM protein synthesis as well as decreasing ECM protein degradation, resulting in increased deposition and remodelling of ECM (Ruiz-Ojeda *et al.*, 2019) (**Figure 3B**).

There are two working hypotheses that may explain the mechanisms underlying ECM-associated insulin resistance in DIO. The first is that the increased protein expression within the ECM creates a physical barrier preventing normal insulin action and glucose diffusion across the sarcolemma (Kang *et al.*, 2013; Williams *et al.*, 2015) (**Figure 3B**). The second hypothesis suggests that muscle ECM may expand to impair vascular function and neovascular growth, given the close contact between the ECM and the endothelium (Williams *et al.*, 2015). The first of these hypotheses suggests that collagen, fibronectin and proteoglycan proteins accumulate in the interstitial space increasing diffusion distance and impeding substrate and hormonal delivery (Berria *et al.*, 2006; Williams *et al.*, 2015). In support of this hypothesis, Kang *et al.* showed that hyaluronan (HA; a major ECM component) in skeletal muscle was significantly increased in the insulin-resistant DIO mice when compared to chow-fed mice (Kang *et al.*, 2013). Interestingly, the same authors also showed that treatment with long-acting pegylated human recombinant PH20 hyaluronidase (PEGPH20) caused a dose-dependent reduction in muscle HA content and improved skeletal muscle insulin resistance in DIO mice (Kang *et al.*, 2013). These results show that whole-body depletion of an ECM polysaccharide improves muscle insulin sensitivity in obese mice, whereas ECM protein accumulation seems to exacerbate insulin resistance (Kang *et al.*, 2013).

The second hypothesis that may explain the role the ECM's plays in insulin resistance centres on the notion that nutrient delivery to the contracting muscle requires functional blood flow to ensure sufficient glucose (during exercise) and insulin (post-exercise) availability to facilitate glucose uptake and glycogen resynthesis, respectively. Thus, ECM vascular dysfunction and capillary rarefaction have been linked to insulin resistance and T2D (Jansson, 2007; Williams *et al.*, 2015). In muscle, nutrient blood flow is enhanced by unperfused capillaries recruited by insulin (Bonner *et al.*, 2013). Research shows that 40% of insulin-stimulated glucose uptake is attributed to augmented muscle perfusion; with this haemodynamic response known to be absent in insulin-resistant T2D patients (Laakso *et al.*, 1990; Baron *et al.*, 1991b, 2000; Vincent *et al.*, 2003; Ellmerer *et al.*, 2006; Kim *et al.*, 2008; Kubota *et al.*, 2011; Bonner *et al.*, 2013). Given that insulin-resistant rodents and humans show capillary rarefaction, this highlights the importance of sufficient muscle capillarisation for insulin-mediated glucose disposal (Lillioja *et al.*, 1987; Mårin *et al.*, 1994; Gavin *et al.*, 2005; Chung *et al.*, 2006; Guo *et al.*, 2012; Bonner *et al.*, 2013). Furthermore, the angiotensin II receptor blocker Losartan (Guo *et al.*, 2012), which enhances vasculature-induced tissue perfusion, also improves insulin sensitivity and increases microvascular density in skeletal muscles (Kang *et al.*, 2011; Guo *et al.*, 2012; Chai *et al.*, 2011; Kang *et al.*, 2011; Guo *et al.*, 2011; Bonner *et al.*, 2013).

Using *mVEGF*^{-/-} mice, Bonner *et al.* (2013) showed a ~60% decrease in capillary density in skeletal muscle. Moreover, KO mice lacking VEGF present with reduced insulin-mediated glucose disposal (Bonner *et al.*, 2013). Importantly, Bonner and colleagues observed that this reduction in insulin-stimulated glucose uptake in skeletal muscle was not associated with a reduction in intracellular insulin signalling (IRS-1, p85, and p/t Akt), suggesting that reduced insulin-stimulated muscle glucose uptake was caused by poor muscle perfusion

(Bonner *et al.*, 2013). Thus, it is hard to draw a complete picture of insulin signalling in skeletal muscle as it is possible that integrin-associated signalling could have been negatively affected in this *mVEGF*^{-/-} rodent model (Bonner *et al.*, 2013). Taken together, the studies above suggest that muscle capillary rarefaction and endothelial dysfunction are two avenues through which the remodelling of the ECM may contribute to insulin resistance in skeletal muscles (Williams *et al.*, 2015).

Integrins: important players in diet-induced insulin resistance

It seems clear that excessive ECM protein remodelling harms insulin sensitivity in skeletal muscle. However, it also appears possible that loss of function in key receptor proteins may also be implicated in insulin resistance. Of the two main integrin-mediated adhesion molecules, integrin $\alpha2\beta1$ is of particular interest as under stress conditions such as high-fat diets (HFD), it reveals an antiangiogenic and profibrotic nature, promoting increased collagen expression and ROS production (Langholz *et al.*, 1995; Kang *et al.*, 2011; Bedard & Krause, 2007). Integrin $\alpha2\beta1$ deletion in mouse skeletal muscle leads to angiogenesis and cell proliferation *in vivo* (Zhang *et al.*, 2008; Kang *et al.*, 2011). In contrast, the collagen receptor integrin $\alpha1\beta1$ is proangiogenic and antifibrotic with integrin $\alpha1$ -null mesangial cells displaying increased collagen synthesis (Chen *et al.*, 2004, 2007, Borza *et al.*, 2012). Moreover, integrin $\alpha1\beta1$ deletion causes a reduction in angiogenesis and endothelial cell proliferation *in vivo* (Pozzi *et al.*, 2000; Abair *et al.*, 2008).

Zong and colleagues (2009) showed that deletion of muscle-specific integrin $\beta1$ in chow-fed mice led to a reduction in whole-body insulin-stimulated glucose uptake during a

hyperinsulinaemic-euglycaemic clamp; a finding that was accompanied by a decrease in muscle glycogen synthesis and p-Akt^{Ser473} (Zong *et al.*, 2009). A notion demonstrated schematically in **Figure 3B**.

Using mouse models lacking integrin $\alpha 2\beta 1$ (*itga2^{-/-}*) and integrin $\alpha 1\beta 1$ (*itga1^{-/-}*), Kang *et al.* showed that a HFD caused insulin resistance in both controls and integrin-null mice (Kang *et al.*, 2011), yet glucose infusion rates (GIRs) were reduced in *itga1^{-/-}* compared with control (*itga1^{+/+}*) mice in response to HFD treatment. In addition, GIRs were higher in the HF-fed *itga2^{-/-}* mice when compared with HF-fed *itga2^{+/+}* mice. Moreover, HF-fed *itga2^{-/-}* skeletal muscles had increased IRS-1 and p-Akt expression compared to controls (Kang *et al.*, 2011). Taken together, these data imply that HFD mice lacking integrin $\alpha 2\beta 1$ have improved insulin sensitivity, suggesting that integrin $\alpha 2\beta 1$ may play a role in the development of insulin resistance.

Interestingly, the HF-fed *itga2^{-/-}* mice seemed to be protected against HFD induced insulin resistance, associated with the presence of a normal collagen protein structure (Kang *et al.*, 2011). Moreover, the decreased insulin resistance observed in integrin $\alpha 2\beta 1$ null rodent may be explained by an enhanced vascularisation in HF-fed *itga2^{-/-}* mice compared to controls as shown using immunostaining techniques (Kang *et al.*, 2011), providing further evidence of the anti-angiogenic nature of integrin $\alpha 2\beta 1$.

The study by Kang *et al.* (2011) provides mechanistic insight into the potential link between muscle insulin resistance, decreased glucose disposal, and increased collagen structure, which seems to be reversed in the absence of integrin $\alpha 2\beta 1$. Importantly, HF-fed rodents in

whom integrin $\alpha 2\beta 1$ was deleted had significantly greater insulin-stimulated glucose uptake compared with chow-fed *itga2^{+/+}* mice. This study proposes a key role of integrins in insulin resistance and glucose uptake, however it does not explain how integrins, at a mechanistic level, connect to the cytoskeleton and exert their functions. The next section will review the key integrin-associated proteins along with the potential role these proteins play in ECM-cytoskeleton stabilisation and glucose uptake in skeletal muscle.

ILK-deficient mice under HFD show improved insulin sensitivity and muscle capillarisation

Kang *et al.* (2016) used muscle-specific ILK-deficient (ILK^{lox/lox}HSacre) mice to study ILK under diet-induced muscle insulin resistance. ILK^{lox/lox}HSacre and WT mice (ILK^{lox/lox}) were fed HFD or chow diet for 16 wk (Kang *et al.*, 2016), with validated insulin clamps being performed at 0 and 16 wk. ILK deficiency did not alter body mass or body fat in the ILK^{lox/lox}HSacre mice. In addition, glucose infusion rates and glucose disappearance (R_d) rates were not different between chow-fed groups, whereas both parameters were substantially higher in HF-fed ILK^{lox/lox}HSacre compared with HF-fed WT, suggesting greater insulin-mediated glucose response in the ILK-deficient mice (Kang *et al.*, 2016). Glucose metabolic index (R_g) was greater in HF-fed WT compared with chow-fed WT, meaning the mice developed HFD-induced insulin resistance; however, the HFD-induced glucose metabolism impairment was absent in the HF-fed ILK^{lox/lox}HSacre mice (Kang *et al.*, 2016). Moreover, the same authors found that R_g was not different between WT and ILK-deficient mice in adipose tissue, regardless of diet. These results suggest that, independently of adiposity, muscle-specific ILK deletion improves glucose intolerance despite diet-induced insulin resistance (Kang *et al.*, 2016).

Interestingly, Wasserman's group found that improved insulin resistance was associated with an increase in CD31, a vascular/endothelial marker protein found in proximity of capillaries, implying increased signalling for local capillarisation in the HFD ILK-deficient mice (Kang *et al.*, 2016). The increase of CD31 in HF-fed ILK^{lox/lox}HSACre mice was also associated with a decrease in JNK, P38 and ERK1/2, all of which are known to inhibit endothelial function and capillary proliferation, with an increase in insulin-dependant Akt phosphorylation (Kang *et al.*, 2016). In sum, muscle-specific ILK-deficient mice showed increased muscle capillarization and increased Akt activity; highlighting the importance of ILK in insulin perfusion and insulin signalling in skeletal muscle.

ILK depletion impairs glucose uptake in muscles of adult mice in a non-pathological context

Elsewhere, a study by Hatem-Vaquero *et al.* (2017) used whole-body conditional ILK knockdown (cKD-ILK) mice to make comparisons with WT counterparts in response to a typical chow-fed diet with comparisons for glucose control measured by glucose (GTT) and insulin tolerance test (ITT). These data showed elevated glycaemia and insulinaemia in cKD-ILK mice and increased homeostasis model assessment of insulin resistance (HOMA-IR; Hatem-Vaquero *et al.*, 2017). In a parallel *in vitro* experiment showed that GLUT4 expression and p-Akt^{Ser473} were reduced in cKD-ILK tissues (Hatem-Vaquero *et al.*, 2017). Taken together, these results suggest that ILK depletion in adult mice in a non-pathological context, impairs GLUT4 expression and membrane presence, with subsequent reduction in peripheral glucose uptake and insulin sensitivity (Hatem-Vaquero *et al.*, 2017). It is worth

noting that these authors intended to perform this research on healthy, basal-fed adult mice, to avoid any upstream ILK pathological changes linked to ECM-associated proteins content, a phenomenon typically seen in type 2 diabetes (Berria *et al.*, 2006; Pasarica *et al.*, 2009; Kang *et al.*, 2011; Williams *et al.*, 2015; Hatem-Vaquero *et al.*, 2017). Overall, Hatem-Vaquero and co-workers' (2017) results show differences in glucose homeostasis between the cCK ILK and the WT mice. This is contrary to the observations of Kang *et al.* (2016), where the non inducible skeletal muscle-specific ILK KO mice showed no differences in glucose homeostasis compared to WT under basal chow-fed diet. This discrepancy may be explained by the different origin and settings of the mice model used; Kang *et al.*'s (2016) KO mice were developed through a muscle-specific ILK deletion at birth, whereas in the Hatem-Vaquero *et al.*'s (2017) models of ILK depletion were induced in adulthood. That said, what both these studies seem to confirm is that ILK is an important effector in the integrin nexus that acts as a downstream regulator in diet-induced insulin resistance.

The ILK/Rac1/cytoskeleton pathway is involved in insulin resistance

Insulin-resistant skeletal muscle and muscle cells in culture displays altered actin remodelling. Sylow *et al.* (2013a) demonstrated decreased Rac1 expression by 20% in soleus and 15% in EDL, along with reduced glucose uptake in mice feed a HFD for 12 weeks. Elsewhere Raun *et al.* (2018) showed that HFD Rac1 muscle-specific knockout (mKO) mice display reduced insulin-stimulated glucose transport in triceps, gastrocnemius and soleus muscles, suggesting that Rac1 ablation and HFD treatment combined negatively effects insulin-dependent glucose transport in muscle. These mouse studies are corroborated in human based experimental trials showing that Rac1 signalling is impaired in insulin-resistant patients with T2D and in obese subjects (Sylow *et al.*, 2013a). ILK has been also shown to have a role in regulating actin filaments' rearrangement via PI3K-Rac1 (Qian

et al., 2005; Gheyara *et al.*, 2007). Indeed, ILK overexpression in CEF cells increased Rac1 activation, a finding completely reversed with the administration of the PI3K inhibitor LY294002 (10-20 μ M), suggesting that Rac1 is implicated in ILK signalling in a PI3K-dependent manner (Qian *et al.*, 2005). In addition, the same authors demonstrated that Rac1 inhibition in CEF cells inhibited the effects of ILK on active filament and cell migration (Qian *et al.*, 2005). A similar link between ILK and Rac1 could be therefore speculated in skeletal muscle as well.

ILK depletion in *Caenorhabditis elegans* and *Drosophila melanogaster* leads to muscle detachment of focal adhesion sites (Zervas *et al.*, 2001; Mackinnon *et al.*, 2002; Gheyara *et al.*, 2007; Alessi *et al.*, 1997), while ILK KO mice presented severe muscular dystrophy and actin cytoskeleton restructuring and displacements of focal adhesion-related proteins, such as dystrophin and FAK (Gheyara *et al.*, 2007; Boccafoschi *et al.*, 2011; Hodges *et al.*, 1997). Taken together, these findings demonstrate that ILK is a possible actin cytoskeleton regulator sitting upstream of Rac1. However, Gheyara and co-workers (2007) did not investigate the metabolic consequences of ILK depletion. Thus, we speculate that glucose uptake may have decreased in the ILK KO model, given that ILK depleted mice also showed a reduction in skeletal muscle mass, a tissue that accounts for 80% of the total glucose metabolism under insulin stimulation (Bisht & Dey, 2008). The hypothesis is supported elsewhere (Kang *et al.*, 2016; Hatem-Vaquero *et al.*, 2017).

Conclusion

The integrins and the actin cytoskeleton are suggested to have an important role in contraction- and insulin-stimulated glucose uptake in muscle. This functional link involves the ECM-associated integrin network, which might be required for all stimuli to be effective and inducing glucose transport in skeletal muscle. It is worth noting that the tension-mediated

pathway seems to operate alongside both contraction- and insulin-stimulated glucose uptake, rather than separately. While the interacting proteins involved in this regulatory process need further investigation, integrin-associated proteins and the actin cytoskeleton have potential roles. ECM remodeling occurs in mouse and human models of obesity, insulin resistant and type 2 diabetes that are linked, in part, to elevated systemic inflammation, which is in turn associated with pro-fibrotic mechanisms. The ECM involvement in obesity-induced insulin resistance may be explained by the evidence that ECM remodeling contributes to increased collagen formation, a process responsible for generating a physical barrier for insulin fusion and glucose transport. Moreover, ECM remodeling causes distinct compositional changes in integrin signaling within the matrix, again a process known to contribute to reduced insulin and nutrient uptake in skeletal muscle. The research discussed in this review suggest that a stable linkage between the ECM and the cytoplasmic actin cytoskeleton is critical for effective glucose uptake in skeletal muscle in response to insulin-, contraction- and tension-mediated pathways. However, we cannot yet ascertain if the ECM-integrin axis operates independently of the traditional pathways, or merely works alongside these to assist effective glucose uptake. This research area is clearly still in its infancy with a number of key question unanswered that will require technological advances.

Funding Support

This research did not receive any specific grant from funding agencies in the public, commercial, or not-for-profit sectors.

Competing Interests

No conflicts of interest, financial or otherwise, are declared by the authors.

This article is protected by copyright. All rights reserved.

Authors' Contribution

FD, RM and LS contributed to the conception of the manuscript. FD and RM contributed to drafting and writing the manuscript. LS, VB, NT and NH contributed to revising intellectual content of the manuscript. FD and RM had primary responsibility for final content. All authors approved the final version of the manuscript and the authors who qualify for authorship are listed.

References

- Abair, T. D., Bulus, N., Borza, C., Sundaramoorthy, M., Zent, R., & Pozzi, A. (2008). Functional analysis of the cytoplasmic domain of the integrin $\alpha 1$ subunit in endothelial cells. *Blood*, *112*(8), 3242–3254. <https://doi.org/10.1182/blood-2007-12-126433>
- Alessi, D. R., Deak, M., Casamayor, A., Barry Caudwell, F., Morrice, N., Norman, D. G., Gaffney, P., Reese, C. B., MacDougall, C. N., Harbison, D., Ashworth, A., & Bownes, M. (1997). 3-Phosphoinositide-dependent protein kinase-1 (PDK1): structural and functional homology with the *Drosophila* DSTPK61 kinase. *Current Biology*, *7*(10), 776–789. [https://doi.org/10.1016/s0960-9822\(06\)00336-8](https://doi.org/10.1016/s0960-9822(06)00336-8)
- Al-Khalili, L., Bouzakri, K., Glund, S., Lönnqvist, F., Koistinen, H. A., & Krook, A. (2006). Signaling Specificity of Interleukin-6 Action on Glucose and Lipid Metabolism in Skeletal Muscle. *Molecular Endocrinology*, *20*(12), 3364–3375. <https://doi.org/10.1210/me.2005-0490>
- Andez, A. M., & Amenta, P. S. (1995). The extracellular matrix in hepatic regeneration. *The FASEB Journal*, *9*(14), 1401–1410. <https://doi.org/10.1096/fasebj.9.14.7589981>
- Aumailley, M., & Gayraud, B. (1998). Structure and biological activity of the extracellular matrix. *Journal of Molecular Medicine*, *76*(3–4), 253–265. <https://doi.org/10.1007/s001090050215>
- Baron, A. D., Laakso, M., Brechtel, G., & Edelman, S. V. (1991). Reduced capacity and affinity of skeletal muscle for insulin-mediated glucose uptake in noninsulin-

- dependent diabetic subjects. Effects of insulin therapy. *Journal of Clinical Investigation*, 87(4), 1186–1194. <https://doi.org/10.1172/jci115117>
- Baron, A. D., Laakso, M., Brechtel, G., & Eedelman, S. V. (1991). Mechanism of Insulin Resistance in Insulin-Dependent Diabetes Mellitus: A Major Role for Reduced Skeletal Muscle Blood Flow*. *The Journal of Clinical Endocrinology & Metabolism*, 73(3), 637–643. <https://doi.org/10.1210/jcem-73-3-637>
- Baron, A. D., Tarshoby, M., Hook, G., Lazaridis, E. N., Cronin, J., Johnson, A., & Steinberg, H. O. (2000). Interaction between insulin sensitivity and muscle perfusion on glucose uptake in human skeletal muscle: evidence for capillary recruitment. *Diabetes*, 49(5), 768–774. <https://doi.org/10.2337/diabetes.49.5.768>
- Barresi, R., & Campbell, K. P. (2006). Dystroglycan: from biosynthesis to pathogenesis of human disease. *Journal of Cell Science*, 119(2), 199–207. <https://doi.org/10.1242/jcs.02814>
- Bedard, K., & Krause, K. H. (2007). The NOX Family of ROS-Generating NADPH Oxidases: Physiology and Pathophysiology. *Physiological Reviews*, 87(1), 245–313. <https://doi.org/10.1152/physrev.00044.2005>
- Beria, R., Wang, L., Richardson, D. K., Finlayson, J., Belfort, R., Pratipanawatr, T., de Filippis, E. A., Kashyap, S., & Mandarino, L. J. (2006). Increased collagen content in insulin-resistant skeletal muscle. *American Journal of Physiology-Endocrinology and Metabolism*, 290(3), E560–E565. <https://doi.org/10.1152/ajpendo.00202.2005>
- Bisht, B., & Dey, C. S. (2008). Focal Adhesion Kinase contributes to insulin-induced actin reorganization into a mesh harboring Glucose transporter-4 in insulin resistant skeletal muscle cells. *BMC Cell Biology*, 9(1), 1–12. <https://doi.org/10.1186/1471-2121-9-48>
- Bisht, B., Goel, H. L., & Dey, C. S. (2007). Focal adhesion kinase regulates insulin resistance in skeletal muscle. *Diabetologia*, 50(5), 1058–1069. <https://doi.org/10.1007/s00125-007-0591-6>
- Bisht, B., Srinivasan, K., & Dey, C. S. (2008a). In vivo inhibition of focal adhesion kinase causes insulin resistance. *The Journal of Physiology*, 586(16), 3825–3837. <https://doi.org/10.1113/jphysiol.2008.157107>
- Bisht, B., Srinivasan, K., & Dey, C. S. (2008b). In vivo inhibition of focal adhesion kinase causes insulin resistance. *The Journal of Physiology*, 586(16), 3825–3837. <https://doi.org/10.1113/jphysiol.2008.157107>
- Blair, D. R., Funai, K., Schweitzer, G. G., & Cartee, G. D. (2009). A myosin II ATPase inhibitor reduces force production, glucose transport, and phosphorylation of AMPK and TBC1D1 in electrically stimulated rat skeletal muscle. *American Journal of Physiology-Endocrinology and Metabolism*, 296(5), E993–E1002. <https://doi.org/10.1152/ajpendo.91003.2008>
- Boccafoschi, F., Mosca, C., Bosetti, M., & Cannas, M. (2011). The role of mechanical stretching in the activation and localization of adhesion proteins and related

- intracellular molecules. *Journal of Cellular Biochemistry*, 112(5), 1403–1409. <https://doi.org/10.1002/jcb.23056>
- Bonner, J. S., Lantier, L., Hasenour, C. M., James, F. D., Bracy, D. P., & Wasserman, D. H. (2012). Muscle-Specific Vascular Endothelial Growth Factor Deletion Induces Muscle Capillary Rarefaction Creating Muscle Insulin Resistance. *Diabetes*, 62(2), 572–580. <https://doi.org/10.2337/db12-0354>
- Boppart, M. D., & Mahmassani, Z. S. (2019). Integrin signalling linking mechanical stimulation to skeletal muscle hypertrophy. *American Journal of Physiology-Cell Physiology*, 317(4), C629–C641. <https://doi.org/10.1152/ajpcell.00009.2019>
- Borza, C. M., Su, Y., Chen, X., Yu, L., Mont, S., Chetyrkin, S., Voziyan, P., Hudson, B. G., Billings, P. C., Jo, H., Bennett, J. S., DeGrado, W. F., Eckes, B., Zent, R., & Pozzi, A. (2012). Inhibition of Integrin $\alpha 2\beta 1$ Ameliorates Glomerular Injury. *Journal of the American Society of Nephrology*, 23(6), 1027–1038. <https://doi.org/10.1681/asn.2011040367>
- Bouché, C., Serdy, S., Kahn, C. R., & Goldfine, A. B. (2004). The Cellular Fate of Glucose and Its Relevance in Type 2 Diabetes. *Endocrine Reviews*, 25(5), 807–830. <https://doi.org/10.1210/er.2003-0026>
- Brozinick, J. T., & Birnbaum, M. J. (1998). Insulin, but Not Contraction, Activates Akt/PKB in Isolated Rat Skeletal Muscle. *Journal of Biological Chemistry*, 273(24), 14679–14682. <https://doi.org/10.1074/jbc.273.24.14679>
- Brozinick, J. T., Hawkins, E. D., Strawbridge, A. B., & Elmendorf, J. S. (2004). Disruption of Cortical Actin in Skeletal Muscle Demonstrates an Essential Role of the Cytoskeleton in Glucose Transporter 4 Translocation in Insulin-sensitive Tissues. *Journal of Biological Chemistry*, 279(39), 40699–40706. <https://doi.org/10.1074/jbc.m402697200>
- Brozinick, J. T., Berkemeier, B.A., & Elmendorf, J.S. (2007). “Actin”g on GLUT4: membrane & cytoskeletal components of insulin action. *Current Diabetes Reviews* 3: 111–122, 2007. doi:10.2174/157339907780598199.
- Chai, W., Wang, W., Dong, Z., Cao, W., & Liu, Z. (2011). Angiotensin II Receptors Modulate Muscle Microvascular and Metabolic Responses to Insulin In Vivo. *Diabetes*, 60(11), 2939–2946. <https://doi.org/10.2337/db10-1691>
- Chen, L. M., Bailey, D., & Fernandez-Valle, C. (2000). Association of $\beta 1$ Integrin with Focal Adhesion Kinase and Paxillin in Differentiating Schwann Cells. *The Journal of Neuroscience*, 20(10), 3776–3784. <https://doi.org/10.1523/jneurosci.20-10-03776.2000>
- Chen, S., Murphy, J., Toth, R., Campbell, D., Morrice, N., & Mackintosh, C. (2007). Complementary regulation of TBC1D1 and AS160 by growth factors, insulin and AMPK activators. *Biochemical Journal*, 409(2), 449–459. <https://doi.org/10.1042/bj20071114>

- Chen, S., Wasserman, D. H., MacKintosh, C., & Sakamoto, K. (2011). Mice with AS160/TBC1D4-Thr649Ala Knockin Mutation Are Glucose Intolerant with Reduced Insulin Sensitivity and Altered GLUT4 Trafficking. *Cell Metabolism*, 13(1), 68–79. <https://doi.org/10.1016/j.cmet.2010.12.005>
- Chen, X., Abair, T. D., Ibanez, M. R., Su, Y., Frey, M. R., Dise, R. S., Polk, D. B., Singh, A. B., Harris, R. C., Zent, R., & Pozzi, A. (2007). Integrin $\alpha1\beta1$ Controls Reactive Oxygen Species Synthesis by Negatively Regulating Epidermal Growth Factor Receptor-Mediated Rac Activation. *Molecular and Cellular Biology*, 27(9), 3313–3326. <https://doi.org/10.1128/mcb.01476-06>
- Chen, X., Moeckel, G., Morrow, J. D., Cosgrove, D., Harris, R. C., Fogo, A. B., Zent, R., & Pozzi, A. (2004). Lack of Integrin $\alpha1\beta1$ Leads to Severe Glomerulosclerosis after Glomerular Injury. *The American Journal of Pathology*, 165(2), 617–630. [https://doi.org/10.1016/s0002-9440\(10\)63326-3](https://doi.org/10.1016/s0002-9440(10)63326-3)
- Cheung, P. C. F., Salt, I. P., Davies, S. P., Hardie, D. G., & Carling, D. (2000). Characterization of AMP-activated protein kinase γ -subunit isoforms and their role in AMP binding. *Biochemical Journal*, 346(3), 659–669. <https://doi.org/10.1042/bj3460659>
- Chiu, T. T., Patel, N., Shaw, A.E., Bamburg, J.R., & Klip, A (2010). Arp2/3- and cofilin-coordinated actin dynamics is required for insulin-mediated GLUT4 translocation to the surface of muscle cells. *Mol Biol Cell* 21: 3529–3539 <https://doi:10.1091/mbc.e10-04-0316>
- Chiu, T. T., Jensen, T. E., Sylow, L., Richter, E. A., & Klip, A. (2011). Rac1 signalling towards GLUT4/glucose uptake in skeletal muscle. *Cellular Signalling*, 23(10), 1546–1554. <https://doi.org/10.1016/j.cellsig.2011.05.022>
- Chung, A. W., Hsiang, Y. N., Matzke, L. A., McManus, B. M., van Breemen, C., & Okon, E. B. (2006). Reduced Expression of Vascular Endothelial Growth Factor Paralleled With the Increased Angiostatin Expression Resulting From the Upregulated Activities of Matrix Metalloproteinase-2 and -9 in Human Type 2 Diabetic Arterial Vasculature. *Circulation Research*, 99(2), 140–148. <https://doi.org/10.1161/01.res.0000232352.90786.fa>
- Clemente, C., Xavier-Neto, J., dalla Costa, A., Consonni, S., Antunes, J., Rocco, S., Pereira, M., Judice, C., Strauss, B., Joazeiro, P., Matos-Souza, J., & Franchini, K. (2012). Focal adhesion kinase governs cardiac concentric hypertrophic growth by activating the AKT and mTOR pathways. *Journal of Molecular and Cellular Cardiology*, 52(2), 493–501. <https://doi.org/10.1016/j.yjmcc.2011.10.015>
- Csapo, R., Gumpenberger, M., & Wessner, B. (2020). Skeletal Muscle Extracellular Matrix – What Do We Know About Its Composition, Regulation, and Physiological Roles? A Narrative Review. *Frontiers in Physiology*, 11, 1–15. <https://doi.org/10.3389/fphys.2020.00253>
- DeFronzo, R. A., Gunnarsson, R., Björkman, O., Olsson, M., & Wahren, J. (1985). Effects of insulin on peripheral and splanchnic glucose metabolism in noninsulin-dependent

- (type II) diabetes mellitus. *Journal of Clinical Investigation*, 76(1), 149–155. <https://doi.org/10.1172/jci111938>
- DeFronzo, R., Simonson, D., & Ferrannini, E. (1982). Hepatic and peripheral insulin resistance: A common feature of Type 2 (non-insulin-dependent) and Type 1 (insulin-dependent) diabetes mellitus. *Diabetologia*, 23(4), 1–7. <https://doi.org/10.1007/bf00253736>
- Delon, I., & Brown, N. H. (2007). Integrins and the actin cytoskeleton. *Current Opinion in Cell Biology*, 19(1), 43–50. <https://doi.org/10.1016/j.ceb.2006.12.013>
- DeMali, K. A., Barlow, C. A., & Burridge, K. (2002). Recruitment of the Arp2/3 complex to vinculin. *Journal of Cell Biology*, 159(5), 881–891. <https://doi.org/10.1083/jcb.200206043>
- Deshmukh, A., Coffey, V. G., Zhong, Z., Chibalin, A. V., Hawley, J. A., & Zierath, J. R. (2006). Exercise-Induced Phosphorylation of the Novel Akt Substrates AS160 and Filamin A in Human Skeletal Muscle. *Diabetes*, 55(6), 1776–1782. <https://doi.org/10.2337/db05-1419>
- Dixon, L. J., Flask, C. A., Papouchado, B. G., Feldstein, A. E., & Nagy, L. E. (2013). Caspase-1 as a Central Regulator of High Fat Diet-Induced Non-Alcoholic Steatohepatitis. *PLoS ONE*, 8(2), e56100. <https://doi.org/10.1371/journal.pone.0056100>
- Draicchio, F., Vliet, S., Ancu, O., Paluska, S. A., Wilund, K. R., Mickute, M., Sathyapalan, T., Renshaw, D., Watt, P., Sylow, L., Burd, N. A., & Mackenzie, R. W. (2020). Integrin-associated ILK and PINCH1 protein content are reduced in skeletal muscle of maintenance haemodialysis patients. *The Journal of Physiology*, 598(24), 5701–5716. <https://doi.org/10.1113/jp280441>
- Duan, Y., Zeng, L., Zheng, C., Song, B., Li, F., Kong, X., & Xu, K. (2018). Inflammatory Links Between High Fat Diets and Diseases. *Frontiers in Immunology*, 9, 1–10. <https://doi.org/10.3389/fimmu.2018.02649>
- Dugina, V., Zwaenepoel, I., Gabbiani, G., Clément, S., & Chaponnier, C. (2009). Beta and gamma-cytoplasmic actins display distinct distribution and functional diversity. *Journal of Cell Science* 122: 2980–2988
- Eickelschulte, S., Hartwig, S., Leiser, B., Lehr, S., Joschko, V., Chokkalingam, M., Chadt, A., & Al-Hasani, H. (2021). AKT/AMPK-mediated phosphorylation of TBC1D4 disrupts the interaction with insulin-regulated aminopeptidase. *Journal of Biological Chemistry*, 296, 1–13. <https://doi.org/10.1016/j.jbc.2021.100637>
- Ellmerer, M., Hamilton-Wessler, M., Kim, S. P., Huecking, K., Kirkman, E., Chiu, J., Richey, J., & Bergman, R. N. (2006). Reduced Access to Insulin-Sensitive Tissues in Dogs With Obesity Secondary to Increased Fat Intake. *Diabetes*, 55(6), 1769–1775. <https://doi.org/10.2337/db05-1509>

- Ervasti, J. M., & Campbell, K. P. (1991). Membrane organization of the dystrophin-glycoprotein complex. *Cell*, *66*(6), 1121–1131. [https://doi.org/10.1016/0092-8674\(91\)90035-w](https://doi.org/10.1016/0092-8674(91)90035-w)
- Filipenko, N. R., Attwell, S., Roskelley, C., & Dedhar, S. (2005). Integrin-linked kinase activity regulates Rac- and Cdc42-mediated actin cytoskeleton reorganization via α -PIX. *Oncogene*, *24*(38), 5837–5849. <https://doi.org/10.1038/sj.onc.1208737>
- Gavin, T. P., Stallings, H. W., Zwetsloot, K. A., Westerkamp, L. M., Ryan, N. A., Moore, R. A., Pofahl, W. E., & Hickner, R. C. (2005). Lower capillary density but no difference in VEGF expression in obese vs. lean young skeletal muscle in humans. *Journal of Applied Physiology*, *98*(1), 315–321. <https://doi.org/10.1152/jappphysiol.00353.2004>
- Geraghty, K., Chen, S., Harthill, J., Ibrahim, A., Toth, R., Morrice, N., Vandermoere, F., Moorhead, G., Hardie, D., & MacKintosh, C. (2007). Regulation of multisite phosphorylation and 14–3–3 binding of AS160 in response to IGF-1, EGF, PMA and AICAR. *Biochemical Journal*, *407*(2), 231–241. <https://doi.org/10.1042/bj20070649>
- Gheyara, A. L., Vallejo-Illarramendi, A., Zang, K., Mei, L., St.-Arnaud, R., Dedhar, S., & Reichardt, L. F. (2007). Deletion of Integrin-Linked Kinase from Skeletal Muscles of Mice Resembles Muscular Dystrophy Due to α 7 β 1-Integrin Deficiency. *The American Journal of Pathology*, *171*(6), 1966–1977. <https://doi.org/10.2353/ajpath.2007.070555>
- Graae, A. S., Grarup, N., Ribel-Madsen, R., Lystbæk, S. H., Boesgaard, T., Staiger, H., Fritsche, A., Wellner, N., Sulek, K., Kjolby, M., Backe, M. B., Chubanava, S., Prats, C., Serup, A. K., Birk, J. B., Dubail, J., Gillberg, L., Vienberg, S. G., Nykjær, A., . . . Holst, B. (2019). ADAMTS9 Regulates Skeletal Muscle Insulin Sensitivity Through Extracellular Matrix Alterations. *Diabetes*, *68*(3), 502–514. <https://doi.org/10.2337/db18-0418>
- Graham, Z. A., Gallagher, P. M., & Cardozo, C. P. (2015). Focal adhesion kinase and its role in skeletal muscle. *Journal of Muscle Research and Cell Motility*, *36*(4–5), 305–315. <https://doi.org/10.1007/s10974-015-9415-3>
- Grounds, M. D., Sorokin, L., & White, J. (2005). Strength at the extracellular matrix-muscle interface. *Scandinavian Journal of Medicine and Science in Sports*, *15*(6), 381–391. <https://doi.org/10.1111/j.1600-0838.2005.00467.x>
- Guo, Q., Mori, T., Jiang, Y., Hu, C., Ohsaki, Y., Yoneki, Y., Nakamichi, T., Ogawa, S., Sato, H., & Ito, S. (2011). Losartan modulates muscular capillary density and reverses thiazide diuretic-exacerbated insulin resistance in fructose-fed rats. *Hypertension Research*, *35*(1), 48–54. <https://doi.org/10.1038/hr.2011.140>
- Hall, Z. W., & Sanes, J. R. (1993). Synaptic structure and development: The neuromuscular junction. *Cell*, *72*, 99–121. [https://doi.org/10.1016/s0092-8674\(05\)80031-5](https://doi.org/10.1016/s0092-8674(05)80031-5)
- Hardie, D. G., & Carling, D. (1997). The AMP-Activated Protein Kinase. Fuel Gauge of the Mammalian Cell? *European Journal of Biochemistry*, *246*(2), 259–273. <https://doi.org/10.1111/j.1432-1033.1997.00259.x>

- Hardie, D. G., & Lin, S. C. (2017). AMP-activated protein kinase – not just an energy sensor. *F1000Research*, 6, 1724. <https://doi.org/10.12688/f1000research.11960.1>
- Hatem-Vaquero, M., Griera, M., García-Jerez, A., Luengo, A., Álvarez, J., Rubio, J. A., Calleros, L., Rodríguez-Puyol, D., Rodríguez-Puyol, M., & de Frutos, S. (2017). Peripheral insulin resistance in ILK-depleted mice by reduction of GLUT4 expression. *Journal of Endocrinology*, 234(2), 115–128. <https://doi.org/10.1530/joe-16-0662>
- Hawley, S. A., Davison, M., Woods, A., Davies, S. P., Beri, R. K., Carling, D., & Hardie, D. G. (1996). Characterization of the AMP-activated Protein Kinase Kinase from Rat Liver and Identification of Threonine 172 as the Major Site at Which It Phosphorylates AMP-activated Protein Kinase. *Journal of Biological Chemistry*, 271(44), 27879–27887. <https://doi.org/10.1074/jbc.271.44.27879>
- Hayashi, T., Hirshman, M. F., Kurth, E. J., Winder, W. W., & Goodyear, L. J. (1998). Evidence for 5'AMP-Activated Protein Kinase Mediation of the Effect of Muscle Contraction on Glucose Transport. *Diabetes*, 47(8), 1369–1373. <https://doi.org/10.2337/diab.47.8.1369>
- Henríquez-Olguin, C., Knudsen, J. R., Raun, S. H., Li, Z., Dalbram, E., Treebak, J. T., Sylow, L., Holmdahl, R., Richter, E. A., Jaimovich, E., & Jensen, T. E. (2019). Cytosolic ROS production by NADPH oxidase 2 regulates muscle glucose uptake during exercise. *Nature Communications*, 10(1). <https://doi.org/10.1038/s41467-019-12523-9>
- Hodges, B., Hayashi, Y., Nonaka, I., Wang, W., Arahata, K., & Kaufman, S. (1997). Altered expression of the alpha7beta1 integrin in human and murine muscular dystrophies. *Journal of Cell Science*, 110(22), 2873–2881. <https://doi.org/10.1242/jcs.110.22.2873>
- Holloszy, J. O. (2003). A forty-year memoir of research on the regulation of glucose transport into muscle. *American Journal of Physiology-Endocrinology and Metabolism*, 284(3), E453–E467. <https://doi.org/10.1152/ajpendo.00463.2002>
- Holt, K. H., Crosbie, R. H., Venzke, D. P., & Campbell, K. P. (2000). Biosynthesis of dystroglycan: processing of a precursor propeptide. *FEBS Letters*, 468(1), 79–83. [https://doi.org/10.1016/s0014-5793\(00\)01195-9](https://doi.org/10.1016/s0014-5793(00)01195-9)
- Hsiao, J., Goins, L., Petek, N., & Mullins, R. (2015). Arp2/3 Complex and Cofilin Modulate Binding of Tropomyosin to Branched Actin Networks. *Current Biology*, 25(12), 1573–1582. <https://doi.org/10.1016/j.cub.2015.04.038>
- Huang, D., Khoe, M., Ilic, D., & Bryer-Ash, M. (2006). Reduced Expression of Focal Adhesion Kinase Disrupts Insulin Action in Skeletal Muscle Cells. *Endocrinology*, 147(7), 3333–3343. <https://doi.org/10.1210/en.2005-0382>
- Huber, J., Löffler, M., Bilban, M., Reimers, M., Kadl, A., Todoric, J., Zeyda, M., Geyeregger, R., Schreiner, M., Weichhart, T., Leitinger, N., Waldhäusl, W., & Stulnig, T. M. (2006). Prevention of high-fat diet-induced adipose tissue remodeling in obese diabetic mice by n-3 polyunsaturated fatty acids. *International Journal of Obesity*, 31(6), 1004–1013. <https://doi.org/10.1038/sj.ijo.0803511>

- Hynes, R. O. (2002). Integrins. *Cell*, 110(6), 673–687. [https://doi.org/10.1016/s0092-8674\(02\)00971-6](https://doi.org/10.1016/s0092-8674(02)00971-6)
- Hynes, R. O. (2009). The Extracellular Matrix: Not Just Pretty Fibrils. *Science*, 326(5957), 1216–1219. <https://doi.org/10.1126/science.1176009>
- Hynes, R. O., & Naba, A. (2011). Overview of the Matrisome--An Inventory of Extracellular Matrix Constituents and Functions. *Cold Spring Harbor Perspectives in Biology*, 4(1), a004903. <https://doi.org/10.1101/cshperspect.a004903>
- Ibraghimov-Beskrovnaya, O., Ervasti, J. M., Leveille, C. J., Slaughter, C. A., Sernett, S. W., & Campbell, K. P. (1992). Primary structure of dystrophin-associated glycoproteins linking dystrophin to the extracellular matrix. *Nature*, 355(6362), 696–702. <https://doi.org/10.1038/355696a0>
- Ihleemann, J., Ploug, T., Hellsten, Y., & Galbo, H. (2000). Effect of stimulation frequency on contraction-induced glucose transport in rat skeletal muscle. *American Journal of Physiology-Endocrinology and Metabolism*, 279(4), E862–E867. <https://doi.org/10.1152/ajpendo.2000.279.4.e862>
- Inoue, M., Jiang, Y., Barnes, R. H., Tokunaga, M., Martinez-Santibañez, G., Geletka, L., Lumeng, C. N., Buchner, D. A., & Chun, T. H. (2013). Thrombospondin 1 Mediates High-Fat Diet-Induced Muscle Fibrosis and Insulin Resistance in Male Mice. *Endocrinology*, 154(12), 4548–4559. <https://doi.org/10.1210/en.2013-1587>
- Ito, Y., Obara, K., Ikeda, R., Ishii, M., Tanabe, Y., Ishikawa, T., & Nakayama, K. (2005). Passive stretching produces Akt- and MAPK-dependent augmentations of GLUT4 translocation and glucose uptake in skeletal muscles of mice. *Pflügers Archiv - European Journal of Physiology*, 451(6), 803–813. <https://doi.org/10.1007/s00424-005-1512-5>
- Jansson, P. A. (2007). Endothelial dysfunction in insulin resistance and type 2 diabetes. *Journal of Internal Medicine*, 262(2), 173–183. <https://doi.org/10.1111/j.1365-2796.2007.01830.x>
- JeBailey, L., Rudich, A., Huang, X., Ciano-Oliveira, C. D., Kapus, A., & Klip, A. (2004). Skeletal Muscle Cells and Adipocytes Differ in Their Reliance on TC10 and Rac for Insulin-Induced Actin Remodeling. *Molecular Endocrinology*, 18(2), 359–372. <https://doi.org/10.1210/me.2003-0294>
- JeBailey, L., Wanono, O., Niu, W., Roessler, J., Rudich, A., & Klip, A. (2007). Ceramide- and Oxidant-Induced Insulin Resistance Involve Loss of Insulin-Dependent Rac-Activation and Actin Remodeling in Muscle Cells. *Diabetes*, 56(2), 394–403. <https://doi.org/10.2337/db06-0823>
- Jensen, T. E., Rose, A. J., Jørgensen, S. B., Brandt, N., Schjerling, P., Wojtaszewski, J. F. P., & Richter, E. A. (2007). Possible CaMKK-dependent regulation of AMPK phosphorylation and glucose uptake at the onset of mild tetanic skeletal muscle contraction. *American Journal of Physiology-Endocrinology and Metabolism*, 292(5), E1308–E1317. <https://doi.org/10.1152/ajpendo.00456.2006>

- Jensen, T. E., Sylow, L., Rose, A. J., Madsen, A. B., Angin, Y., Maarbjerg, S. J., & Richter, E. A. (2014). Contraction-stimulated glucose transport in muscle is controlled by AMPK and mechanical stress but not sarcoplasmic reticulum Ca²⁺ release. *Molecular Metabolism*, 3(7), 742–753. <https://doi.org/10.1016/j.molmet.2014.07.005>
- Kang, L., Ayala, J. E., Lee-Young, R. S., Zhang, Z., James, F. D., Neuffer, P. D., Pozzi, A., Zutter, M. M., & Wasserman, D. H. (2011). Diet-Induced Muscle Insulin Resistance Is Associated With Extracellular Matrix Remodeling and Interaction With Integrin $\alpha 2 \beta 1$ in Mice. *Diabetes*, 60(2), 416–426. <https://doi.org/10.2337/db10-1116>
- Kang, L., Lantier, L., Kennedy, A., Bonner, J. S., Mayes, W. H., Bracy, D. P., Bookbinder, L. H., Hasty, A. H., Thompson, C. B., & Wasserman, D. H. (2013). Hyaluronan Accumulates With High-Fat Feeding and Contributes to Insulin Resistance. *Diabetes*, 62(6), 1888–1896. <https://doi.org/10.2337/db12-1502>
- Kang, L., Mayes, W. H., James, F. D., Bracy, D. P., & Wasserman, D. H. (2013). Matrix metalloproteinase 9 opposes diet-induced muscle insulin resistance in mice. *Diabetologia*, 57(3), 603–613. <https://doi.org/10.1007/s00125-013-3128-1>
- Kang, L., Mokshagundam, S., Reuter, B., Lark, D. S., Sneddon, C. C., Hennayake, C., Williams, A. S., Bracy, D. P., James, F. D., Pozzi, A., Zent, R., & Wasserman, D. H. (2016). Integrin-Linked Kinase in Muscle Is Necessary for the Development of Insulin Resistance in Diet-Induced Obese Mice. *Diabetes*, 65(6), 1590–1600. <https://doi.org/10.2337/db15-1434>
- Karlsson, H. K., Zierath, J. R., Kane, S., Krook, A., Lienhard, G. E., & Wallberg-Henriksson, H. (2005). Insulin-Stimulated Phosphorylation of the Akt Substrate AS160 Is Impaired in Skeletal Muscle of Type 2 Diabetic Subjects. *Diabetes*, 54(6), 1692–1697. <https://doi.org/10.2337/diabetes.54.6.1692>
- Kee, A.J., Gunning, P.W., & Hardeman, E.C. (2009). Diverse roles of the actin cytoskeleton in striated muscle. *Journal of Muscle Research & Cell Motility*. 2009; 30(5-6):187-97.
- Kim, F., Pham, M., Maloney, E., Rizzo, N. O., Morton, G. J., Wisse, B. E., Kirk, E. A., Chait, A., & Schwartz, M. W. (2008). Vascular Inflammation, Insulin Resistance, and Reduced Nitric Oxide Production Precede the Onset of Peripheral Insulin Resistance. *Arteriosclerosis, Thrombosis, and Vascular Biology*, 28(11), 1982–1988. <https://doi.org/10.1161/atvbaha.108.169722>
- Kim, H. J., Kim, T., Hoffman, N. J., James, D. E., Humphrey, S. J., & Yang, P. (2021). PhosR enables processing and functional analysis of phosphoproteomic data. *Cell Reports*, 34(8), 108771. <https://doi.org/10.1016/j.celrep.2021.108771>
- Kjøbsted, R., Hingst, J. R., Fentz, J., Foretz, M., Sanz, M., Pehmøller, C., Shum, M., Marette, A., Mounier, R., Treebak, J. T., Wojtaszewski, J. F. P., Viollet, B., & Lantier, L. (2018). AMPK in skeletal muscle function and metabolism. *The FASEB Journal*, 32(4), 1741–1777. <https://doi.org/10.1096/fj.201700442r>
- Kjøbsted, R., Munk-Hansen, N., Birk, J. B., Foretz, M., Viollet, B., Bjørnholm, M., Zierath, J. R., Treebak, J. T., & Wojtaszewski, J. F. (2016). Enhanced Muscle Insulin Sensitivity

- After Contraction/Exercise Is Mediated by AMPK. *Diabetes*, 66(3), 598–612. <https://doi.org/10.2337/db16-0530>
- Kjøbsted, R., Roll, J. L., Jørgensen, N. O., Birk, J. B., Foretz, M., Viollet, B., Chadt, A., Al-Hasani, H., & Wojtaszewski, J. F. (2019). AMPK and TBC1D1 Regulate Muscle Glucose Uptake After, but Not During, Exercise and Contraction. *Diabetes*, 68(7), 1427–1440. <https://doi.org/10.2337/db19-0050>
- Knudsen, J. R., Steenberg, D. E., Hingst, J. R., Hodgson, L. R., Henriquez-Olguin, C., Li, Z., Kiens, B., Richter, E. A., Wojtaszewski, J. F., Verkade, P., & Jensen, T. E. (2020). Prior exercise in humans redistributes intramuscular GLUT4 and enhances insulin-stimulated sarcolemmal and endosomal GLUT4 translocation. *Molecular Metabolism*, 39, 100998. <https://doi.org/10.1016/j.molmet.2020.100998>
- Kubota, T., Kubota, N., Kumagai, H., Yamaguchi, S., Kozono, H., Takahashi, T., Inoue, M., Itoh, S., Takamoto, I., Sasako, T., Kumagai, K., Kawai, T., Hashimoto, S., Kobayashi, T., Sato, M., Tokuyama, K., Nishimura, S., Tsunoda, M., Ide, T., . . . Kadowaki, T. (2011). Impaired Insulin Signaling in Endothelial Cells Reduces Insulin-Induced Glucose Uptake by Skeletal Muscle. *Cell Metabolism*, 13(3), 294–307. <https://doi.org/10.1016/j.cmet.2011.01.018>
- Laakso, M., Edelman, S. V., Brechtel, G., & Baron, A. D. (1990). Decreased effect of insulin to stimulate skeletal muscle blood flow in obese man. A novel mechanism for insulin resistance. *Journal of Clinical Investigation*, 85(6), 1844–1852. <https://doi.org/10.1172/jci114644>
- Langenbach, K., & Rando, T. (2002). Inhibition of dystroglycan binding to laminin disrupts the PI3K/AKT pathway and survival signaling in muscle cells. *Muscle & Nerve*, 26(5), 644–653. <https://doi.org/10.1002/mus.10258>
- Langholz, O., Röckel, D., Mauch, C., Kozłowska, E., Bank, I., Krieg, T., & Eckes, B. (1995). Collagen and collagenase gene expression in three-dimensional collagen lattices are differentially regulated by alpha 1 beta 1 and alpha 2 beta 1 integrins. *Journal of Cell Biology*, 131(6), 1903–1915. <https://doi.org/10.1083/jcb.131.6.1903>
- Lauritzen, H. P. (2013). Insulin- and Contraction-Induced Glucose Transporter 4 Traffic in Muscle. *Exercise and Sport Sciences Reviews*, 41(2), 77–86. <https://doi.org/10.1097/jes.0b013e318275574c>
- Legate, K. R., & Fässler, R. (2009). Mechanisms that regulate adaptor binding to β -integrin cytoplasmic tails. *Journal of Cell Science*, 122(2), 187–198. <https://doi.org/10.1242/jcs.041624>
- Lillioja, S., Young, A. A., Culter, C. L., Ivy, J. L., Abbott, W. G., Zawadzki, J. K., Yki-Järvinen, H., Christin, L., Secomb, T. W., & Bogardus, C. (1987). Skeletal muscle capillary density and fiber type are possible determinants of in vivo insulin resistance in man. *Journal of Clinical Investigation*, 80(2), 415–424. <https://doi.org/10.1172/jci113088>
- Lund, S., Pryor, P. R., Østergaard, S., Schmitz, O., Pedersen, O., & Holman, G. D. (1998). Evidence against protein kinase B as a mediator of contraction-induced glucose

- transport and GLUT4 translocation in rat skeletal muscle. *FEBS Letters*, 425(3), 472-474. [10.1016/s0014-5793\(98\)00293-2](https://doi.org/10.1016/s0014-5793(98)00293-2)
- Lundell, L. S., & Krook, A. (2013). ContRac1ion-Mediated Glucose Uptake: A Central Role for Rac1. *Diabetes*, 62(4), 1024–1025. <https://doi.org/10.2337/db12-1789>
- Machesky, L. M., & Insall, R. H. (1998). Scar1 and the related Wiskott–Aldrich syndrome protein, WASP, regulate the actin cytoskeleton through the Arp2/3 complex. *Current Biology*, 8(25), 1347–1356. [https://doi.org/10.1016/s0960-9822\(98\)00015-3](https://doi.org/10.1016/s0960-9822(98)00015-3)
- Mackenzie, R., & Elliott, B. (2014). Akt/PKB activation and insulin signaling: a novel insulin signaling pathway in the treatment of type 2 diabetes. *Diabetes, Metabolic Syndrome and Obesity: Targets and Therapy*, 55. <https://doi.org/10.2147/dms0.s48260>
- Mackenzie, R., Maxwell, N., Castle, P., Elliott, B., Brickley, G., & Watt, P. (2012). Intermittent Exercise with and without Hypoxia Improves Insulin Sensitivity in Individuals with Type 2 Diabetes. *The Journal of Clinical Endocrinology & Metabolism*, 97(4), E546–E555. <https://doi.org/10.1210/jc.2011-2829>
- Mackinnon, A., Qadota, H., Norman, K. R., Moerman, D. G., & Williams, B. D. (2002). C. elegans PAT-4/ILK Functions as an Adaptor Protein within Integrin Adhesion Complexes. *Current Biology*, 12(10), 787–797. [https://doi.org/10.1016/s0960-9822\(02\)00810-2](https://doi.org/10.1016/s0960-9822(02)00810-2)
- Marette, A., Burdett, E., Douen, A., Vranic, M., & Klip, A. (1992). Insulin Induces the Translocation of GLUT4 From a Unique Intracellular Organelle to Transverse Tubules in Rat Skeletal Muscle. *Diabetes*, 41(12), 1562–1569. <https://doi.org/10.2337/diab.41.12.1562>
- Marette, A., Richardson, J. M., Ramlal, T., Balon, T. W., Vranic, M., Pessin, J. E., & Klip, A. (1992). Abundance, localization, and insulin-induced translocation of glucose transporters in red and white muscle. *American Journal of Physiology-Cell Physiology*, 263(2), C443–C452. <https://doi.org/10.1152/ajpcell.1992.263.2.c443>
- Marin, P., Andersson, B., Krotkiewski, M., & Bjorntorp, P. (1994). Muscle Fiber Composition and Capillary Density in Women and Men With NIDDM. *Diabetes Care*, 17(5), 382–386. <https://doi.org/10.2337/diacare.17.5.382>
- Mayer, U. (2003). Integrins: Redundant or Important Players in Skeletal Muscle? *Journal of Biological Chemistry*, 278(17), 14587–14590. <https://doi.org/10.1074/jbc.r200022200>
- McConell, G. K., Sjøberg, K. A., Ceutz, F., Gliemann, L., Nyberg, M., Hellsten, Y., Frøsig, C., Kiens, B., Wojtaszewski, J. F. P., & Richter, E. A. (2020). Insulin-induced membrane permeability to glucose in human muscles at rest and following exercise. *The Journal of Physiology*, 598(2), 303–315. <https://doi.org/10.1113/jp278600>
- Merz, K. E., Tunduguru, R., Ahn, M., Salunkhe, V. A., Veluthakal, R., Hwang, J., Bhattacharya, S., McCown, E. M., Garcia, P.A., Zhou, C., Oh, E., Yoder, S. M., Elmendorf, J. S. & Thurmond, D. C. (2022). Changes in Skeletal Muscle PAK1 Levels Regulate Tissue Crosstalk to Impact Whole Body Glucose Homeostasis.

- Michele, D. E., & Campbell, K. P. (2003). Dystrophin-Glycoprotein Complex: Post-translational Processing and Dystroglycan Function. *Journal of Biological Chemistry*, 278(18), 15457–15460. <https://doi.org/10.1074/jbc.r200031200>
- Miki, H., Suetsugu, S., & Takenawa, T. (1998). WAVE, a novel WASP-family protein involved in actin reorganization induced by Rac. *The EMBO Journal*, 17(23), 6932–6941. <https://doi.org/10.1093/emboj/17.23.6932>
- Morcavallo, A., Buraschi, S., Xu, S. Q., Belfiore, A., Schaefer, L., Iozzo, R. V., & Morrione, A. (2014). Decorin differentially modulates the activity of insulin receptor isoform A ligands. *Matrix Biology*, 35, 82–90. <https://doi.org/10.1016/j.matbio.2013.12.010>
- Ohta, K., Aoyama, E., Ahmad, S. A. I., Ito, N., Anam, M. B., Kubota, S., & Takigawa, M. (2018). CCN2/CTGF binds the small leucine rich proteoglycan protein Tsukushi. *Journal of Cell Communication and Signaling*, 13(1), 113–118. <https://doi.org/10.1007/s12079-018-0487-x>
- Parsons, T. J. (2003). Focal adhesion kinase: the first ten years. *Journal of Cell Science*, 116(8), 1409–1416. <https://doi.org/10.1242/jcs.00373>
- Pasarica, M., Gowronska-Kozak, B., Burk, D., Remedios, I., Hymel, D., Gimble, J., Ravussin, E., Bray, G. A., & Smith, S. R. (2009). Adipose Tissue Collagen VI in Obesity. *The Journal of Clinical Endocrinology & Metabolism*, 94(12), 5155–5162. <https://doi.org/10.1210/jc.2009-0947>
- Pozzi, A., Moberg, P. E., Miles, L. A., Wagner, S., Soloway, P., & Gardner, H. A. (2000). Elevated matrix metalloprotease and angiostatin levels in integrin alpha 1 knockout mice cause reduced tumor vascularization. *Proceedings of the National Academy of Sciences of the United States of America*, 97(5), 2202–2207. <https://doi.org/10.1073/pnas.040378497>
- Qian, Y., Zhong, X., Flynn, D. C., Zheng, J. Z., Qiao, M., Wu, C., Dedhar, S., Shi, X., & Jiang, B. H. (2005). ILK mediates actin filament rearrangements and cell migration and invasion through PI3K/Akt/Rac1 signaling. *Oncogene*, 24(19), 3154–3165. <https://doi.org/10.1038/sj.onc.1208525>
- Rahimov, F., & Kunkel, L. M. (2013). Cellular and molecular mechanisms underlying muscular dystrophy. *Journal of Cell Biology*, 201(4), 499–510. <https://doi.org/10.1083/jcb.201212142>
- Raun, S. H., Ali, M., Kjøbsted, R., Møller, L. L. V., Federspiel, M. A., Richter, E. A., Jensen, T. E., & Sylow, L. (2018). Rac1 muscle knockout exacerbates the detrimental effect of high-fat diet on insulin-stimulated muscle glucose uptake independently of Akt. *The Journal of Physiology*, 596(12), 2283–2299. <https://doi.org/10.1113/jp275602>
- Richardson, D. K., Kashyap, S., Bajaj, M., Cusi, K., Mandarino, S. J., Finlayson, J., DeFronzo, R. A., Jenkinson, C. P., & Mandarino, L. J. (2005). Lipid Infusion Decreases the Expression of Nuclear Encoded Mitochondrial Genes and Increases

- the Expression of Extracellular Matrix Genes in Human Skeletal Muscle. *Journal of Biological Chemistry*, 280(11), 10290–10297. <https://doi.org/10.1074/jbc.m408985200>
- Richter, E. A., & Hargreaves, M. (2013). Exercise, GLUT4, and Skeletal Muscle Glucose Uptake. *Physiological Reviews*, 93(3), 993–1017. <https://doi.org/10.1152/physrev.00038.2012>
- Richter, E. A., Ploug, T., & Galbo, H. (1985). Increased Muscle Glucose Uptake After Exercise: No Need for Insulin During Exercise. *Diabetes*, 34(10), 1041–1048. <https://doi.org/10.2337/diab.34.10.1041>
- Richter, E. A., Sylow, L., & Hargreaves, M. (2021). Interactions between insulin and exercise. *Biochemical Journal*, 478(21), 3827–3846. <https://doi.org/10.1042/bcj20210185>
- Rondas, D., Tomas, A., Soto-Ribeiro, M., Wehrle-Haller, B., & Halban, P. A. (2012). Novel Mechanistic Link between Focal Adhesion Remodeling and Glucose-stimulated Insulin Secretion. *Journal of Biological Chemistry*, 287(4), 2423–2436. <https://doi.org/10.1074/jbc.m111.279885>
- Rose, A. J., & Richter, E. A. (2005). Skeletal Muscle Glucose Uptake During Exercise: How is it Regulated? *Physiology*, 20(4), 260–270. <https://doi.org/10.1152/physiol.00012.2005>
- Rudich, A., Konrad, D., Török, D., Ben-Romano, R., Huang, C., Niu, W., Garg, R. R., Wijesekara, N., Germinario, R. J., Bilan, P. J., & Klip, A. (2003). Indinavir uncovers different contributions of GLUT4 and GLUT1 towards glucose uptake in muscle and fat cells and tissues. *Diabetologia*, 46(5), 649–658. <https://doi.org/10.1007/s00125-003-1080-1>
- Ruiz-Ojeda, Méndez-Gutiérrez, Aguilera, & Plaza-Díaz. (2019). Extracellular Matrix Remodeling of Adipose Tissue in Obesity and Metabolic Diseases. *International Journal of Molecular Sciences*, 20(19), 4888. <https://doi.org/10.3390/ijms20194888>
- Rybakova, I. N., Patel, J. R., & Ervasti, J. M. (2000). The Dystrophin Complex Forms a Mechanically Strong Link between the Sarcolemma and Costameric Actin. *Journal of Cell Biology*, 150(5), 1209–1214. <https://doi.org/10.1083/jcb.150.5.1209>
- Schober, M., Raghavan, S., Nikolova, M., Polak, L., Pasolli, H. A., Beggs, H. E., Reichardt, L. F., & Fuchs, E. (2007). Focal adhesion kinase modulates tension signaling to control actin and focal adhesion dynamics. *Journal of Cell Biology*, 176(5), 667–680. <https://doi.org/10.1083/jcb.200608010>
- Schuppan, D. (1990). Structure of the extracellular matrix in normal and fibrotic liver: collagens and glycoproteins. *Seminars in Liver Disease*, 10(1), 1–10. <https://doi.org/10.1055/s-2008-1040452>
- Stanchi, F., Grashoff, C., Nguemini Yonga, C. F., Grall, D., Fässler, R., & van Obberghen-Schilling, E. (2009). Molecular dissection of the ILK-PINCH-parvin triad reveals a fundamental role for the ILK kinase domain in the late stages of focal-adhesion

- maturation. *Journal of Cell Science*, 122(11), 1800–1811. <https://doi.org/10.1242/jcs.044602>
- Stumvoll, M., Goldstein, B. J., & van Haeften, T. W. (2005). Type 2 diabetes: principles of pathogenesis and therapy. *The Lancet*, 365(9467), 1333–1346. [https://doi.org/10.1016/s0140-6736\(05\)61032-x](https://doi.org/10.1016/s0140-6736(05)61032-x)
- Sylow, L., Jensen, T. E., Kleinert, M., Hojlund, K., Kiens, B., Wojtaszewski, J., Prats, C., Schjerling, P., & Richter, E. A. (2013). Rac1 Signaling Is Required for Insulin-Stimulated Glucose Uptake and Is Dysregulated in Insulin-Resistant Murine and Human Skeletal Muscle. *Diabetes*, 62(6), 1865–1875. <https://doi.org/10.2337/db12-1148>
- Sylow, L., Jensen, T. E., Kleinert, M., Mouatt, J. R., Maarbjerg, S. J., Jeppesen, J., Prats, C., Chiu, T. T., Boguslavsky, S., Klip, A., Schjerling, P., & Richter, E. A. (2012). Rac1 Is a Novel Regulator of Contraction-Stimulated Glucose Uptake in Skeletal Muscle. *Diabetes*, 62(4), 1139–1151. <https://doi.org/10.2337/db12-0491>
- Sylow, L., Kleinert, M., Pehmøller, C., Prats, C., Chiu, T. T., Klip, A., Richter, E. A., & Jensen, T. E. (2014). Akt and Rac1 signaling are jointly required for insulin-stimulated glucose uptake in skeletal muscle and downregulated in insulin resistance. *Cellular Signalling*, 26(2), 323–331. <https://doi.org/10.1016/j.cellsig.2013.11.007>
- Sylow, L., Kleinert, M., Richter, E. A., & Jensen, T. E. (2016). Exercise-stimulated glucose uptake — regulation and implications for glycaemic control. *Nature Reviews Endocrinology*, 13(3), 133–148. <https://doi.org/10.1038/nrendo.2016.162>
- Sylow, L., Tokarz, V. L., Richter, E. A., & Klip, A. (2021). The many actions of insulin in skeletal muscle, the paramount tissue determining glycemia. *Cell Metabolism*, 33(4), 758–780. <https://doi.org/10.1016/j.cmet.2021.03.020>
- Tan, B. L., & Norhaizan, M. E. (2019). Effect of High-Fat Diets on Oxidative Stress, Cellular Inflammatory Response and Cognitive Function. *Nutrients*, 11(11), 2579. <https://doi.org/10.3390/nu11112579>
- Tang, C. H., Lu, D. Y., Tan, T. W., Fu, W. M., & Yang, R. S. (2007). Ultrasound Induces Hypoxia-inducible Factor-1 Activation and Inducible Nitric-oxide Synthase Expression through the Integrin/Integrin-linked Kinase/Akt/Mammalian Target of Rapamycin Pathway in Osteoblasts. *Journal of Biological Chemistry*, 282(35), 25406–25415. <https://doi.org/10.1074/jbc.m701001200>
- Tunduguru, L. & Thurmond, D. (2017). Promoting Glucose Transporter-4 Vesicle Trafficking along Cytoskeletal Tracks: PAK-Ing Them Out. *Frontiers in Endocrinology*, 8, 329. <https://doi.org/10.3389/fendo.2017.00329>
- Ueda, S., Kataoka, T., & Satoh, T. (2008). Activation of the small GTPase Rac1 by a specific guanine-nucleotide-exchange factor suffices to induce glucose uptake into skeletal-muscle cells. *Biology of the Cell*, 100(11), 645–661. <https://doi.org/10.1042/bc20070160>

- Ussar, S., Bezy, O., Bluher, M., & Kahn, C. R. (2012). Glypican-4 Enhances Insulin Signaling via Interaction With the Insulin Receptor and Serves as a Novel Adipokine. *Diabetes*, 61(9), 2289–2298. <https://doi.org/10.2337/db11-1395>
- van der Flier, A., & Sonnenberg, A. (2001). Function and interactions of integrins. *Cell and Tissue Research*, 305(3), 285–298. <https://doi.org/10.1007/s004410100417>
- Vicente-Manzanares, M., Choi, C. K., & Horwitz, A. R. (2009). Integrins in cell migration – the actin connection. *Journal of Cell Science*, 122(2), 199–206. <https://doi.org/10.1242/jcs.018564>
- Vincent, M. A., Barrett, E. J., Lindner, J. R., Clark, M. G., & Rattigan, S. (2003). Inhibiting NOS blocks microvascular recruitment and blunts muscle glucose uptake in response to insulin. *American Journal of Physiology-Endocrinology and Metabolism*, 285(1), E123–E129. <https://doi.org/10.1152/ajpendo.00021.2003>
- Wada, T., Miyashita, Y., Sasaki, M., Aruga, Y., Nakamura, Y., Ishii, Y., Sasahara, M. K. M. D., Kanasaki, K., Kitada, M., Koya, D., Shimano, H., Tsuneki, H., & Sasaoka, T. (2013). Eplerenone ameliorates the phenotypes of metabolic syndrome with NASH in liver-specific SREBP-1c Tg mice fed high-fat and high-fructose diet. *American Journal of Physiology-Endocrinology and Metabolism*, 305(11), E1415–E1425. <https://doi.org/10.1152/ajpendo.00419.2013>
- Wallberg-Henriksson, H., & Holloszy, J. O. (1985). Activation of glucose transport in diabetic muscle: responses to contraction and insulin. *American Journal of Physiology-Cell Physiology*, 249(3), C233–C237. <https://doi.org/10.1152/ajpcell.1985.249.3.c233>
- Wang, Q., Somwar, R., Bilan, P. J., Liu, Z., Jin, J., Woodgett, J. R., & Klip, A. (1999). Protein Kinase B/Akt Participates in GLUT4 Translocation by Insulin in L6 Myoblasts. *Molecular and Cellular Biology*, 19(6), 4008–4018. <https://doi.org/10.1128/MCB.19.6.4008>
- Wickström, S. A., Lange, A., Montanez, E., & Fässler, R. (2009). The ILK/PINCH/parvin complex: the kinase is dead, long live the pseudokinase! *The EMBO Journal*, 29(2), 281–291. <https://doi.org/10.1038/emboj.2009.376>
- Williams, A. S., Kang, L., & Wasserman, D. H. (2015). The extracellular matrix and insulin resistance. *Trends in Endocrinology & Metabolism*, 26(7), 357–366. <https://doi.org/10.1016/j.tem.2015.05.006>
- Wu, C. (1999). Integrin-linked kinase and PINCH: partners in regulation of cell-extracellular matrix interaction and signal transduction. *Journal of Cell Science*, 112(24), 4485–4489. <https://doi.org/10.1242/jcs.112.24.4485>
- Wu, C., & Dedhar, S. (2001). Integrin-linked kinase (ILK) and its interactors. *Journal of Cell Biology*, 155(4), 505–510. <https://doi.org/10.1083/jcb.200108077>
- Yue, B. (2014). Biology of the Extracellular Matrix. *Journal of Glaucoma*, 23, S20–S23. <https://doi.org/10.1097/ijg.0000000000000108>

- Yue, Y., Zhang, C., Zhang, X., Zhang, S., Liu, Q., Hu, F., Lv, X., Li, H., Yang, J., Wang, X., Chen, L., Yao, Z., Duan, H., & Niu, W. (2020). An AMPK/Axin1-Rac1 signaling pathway mediates contraction-regulated glucose uptake in skeletal muscle cells. *American Journal of Physiology-Endocrinology and Metabolism*, *318*(3), E330–E342. <https://doi.org/10.1152/ajpendo.00272.2019>
- Yurchenco, P., & Patton, B. (2009). Developmental and Pathogenic Mechanisms of Basement Membrane Assembly. *Current Pharmaceutical Design*, *15*(12), 1277–1294. <https://doi.org/10.2174/138161209787846766>
- Zervas, C. G., Gregory, S. L., & Brown, N. H. (2001). Drosophila Integrin-Linked Kinase Is Required at Sites of Integrin Adhesion to Link the Cytoskeleton to the Plasma Membrane. *Journal of Cell Biology*, *152*(5), 1007–1018. <https://doi.org/10.1083/jcb.152.5.1007>
- Zhang, Z., Ramirez, N. E., Yankeelov, T. E., Li, Z., Ford, L. E., Qi, Y., Pozzi, A., & Zutter, M. M. (2008). $\alpha 2\beta 1$ integrin expression in the tumor microenvironment enhances tumor angiogenesis in a tumor cell-specific manner. *Blood*, *111*(4), 1980–1988. <https://doi.org/10.1182/blood-2007-06-094680>
- Zick, Y. (2001). Insulin resistance: a phosphorylation-based uncoupling of insulin signaling. *Trends in Cell Biology*, *11*(11), 437–441. [https://doi.org/10.1016/s0962-8924\(01\)02129-8](https://doi.org/10.1016/s0962-8924(01)02129-8)
- Zong, H., Armoni, M., Harel, C., Karnieli, E., & Pessin, J. E. (2012). Cytochrome P-450 CYP2E1 knockout mice are protected against high-fat diet-induced obesity and insulin resistance. *American Journal of Physiology-Endocrinology and Metabolism*, *302*(5), E532–E539. <https://doi.org/10.1152/ajpendo.00258.2011>
- Zutter, M., & McCall-Culbreath, K. (2008). Collagen Receptor Integrins: Rising to the Challenge. *Current Drug Targets*, *9*(2), 139–149. <https://doi.org/10.2174/138945008783502494>

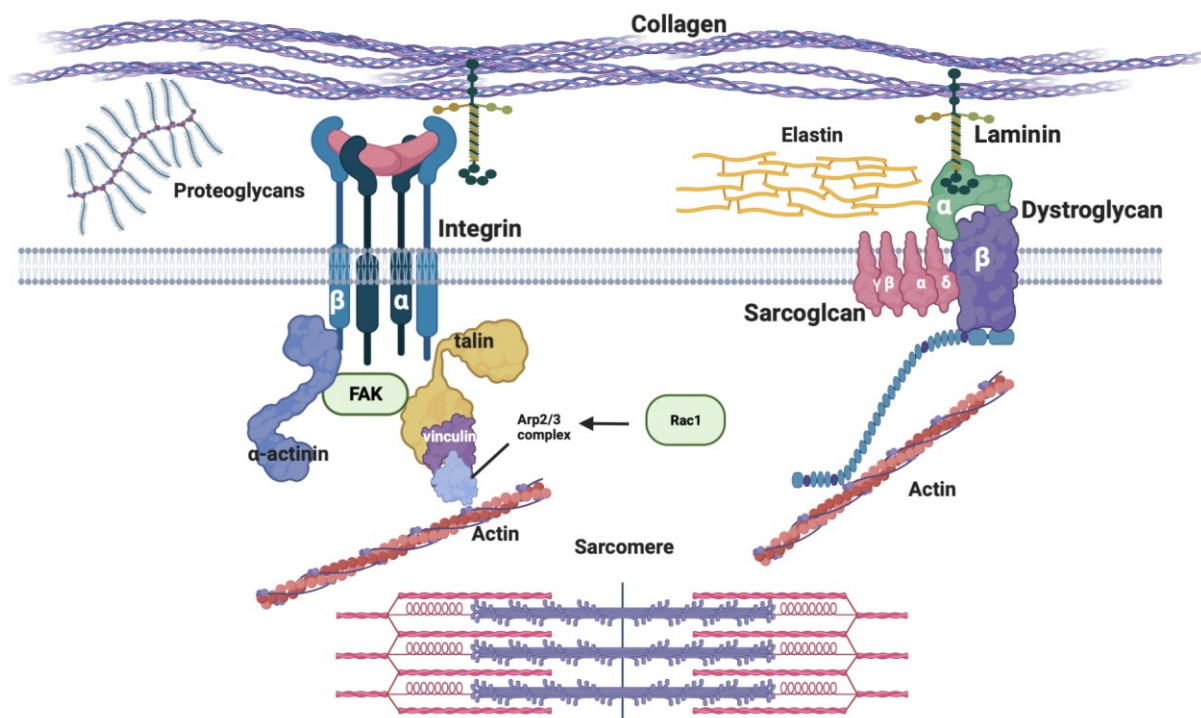


Figure 1. Shows nutrient and hormonal flux impeded by the accumulation of excessive extracellular matrix proteins, causing a physical barrier for glucose uptake in skeletal muscle. Abbreviations: ILK, integrin-linked kinase; FAK, focal adhesion kinase; AKT protein kinase B; Rac1, Ras-related C3 botulinum toxin substrate 1; PINCH, particularly interesting new cysteine– histidine-rich protein; NCK2, noncatalytic region of tyrosine kinase adaptor protein 2; IRS1, insulin receptor substrate 1; PI3K, phosphatidylinositol 3-kinase.

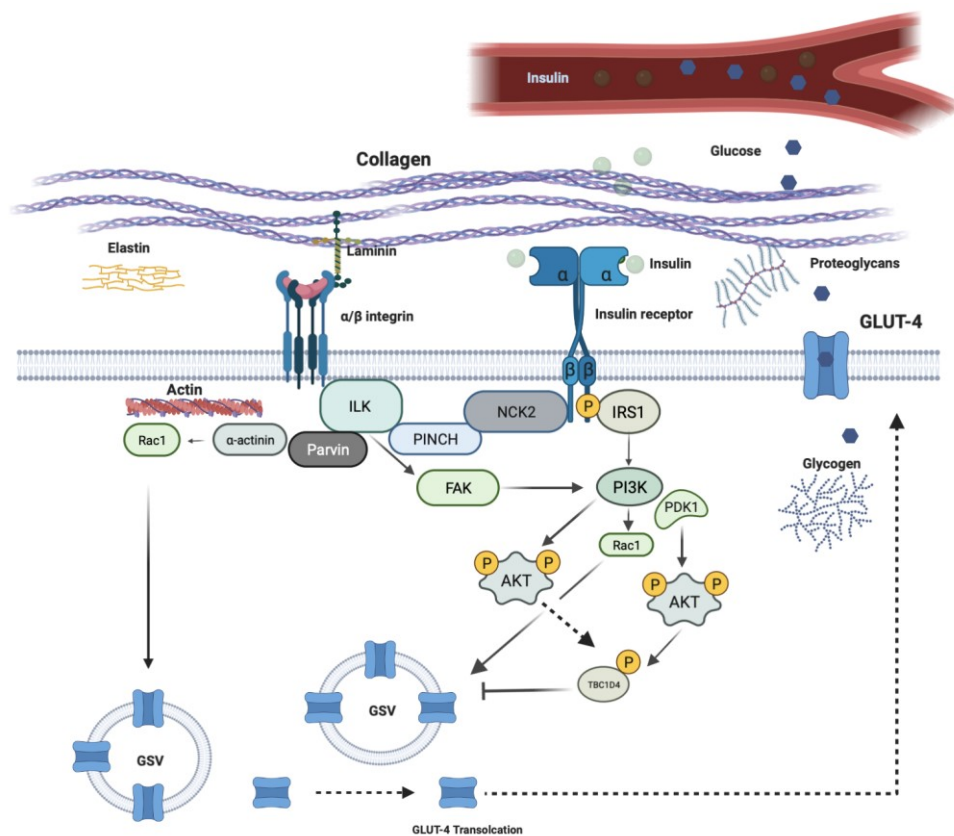


Figure 2. Key components of the extracellular matrix (ECM) of skeletal muscle, demonstrate the linkage between the ECM-associated proteins structures and the contractile filaments of muscle. Abbreviations: FAK, focal adhesion kinase; Arp2/3complex, actin-related protein 2/3 complex.

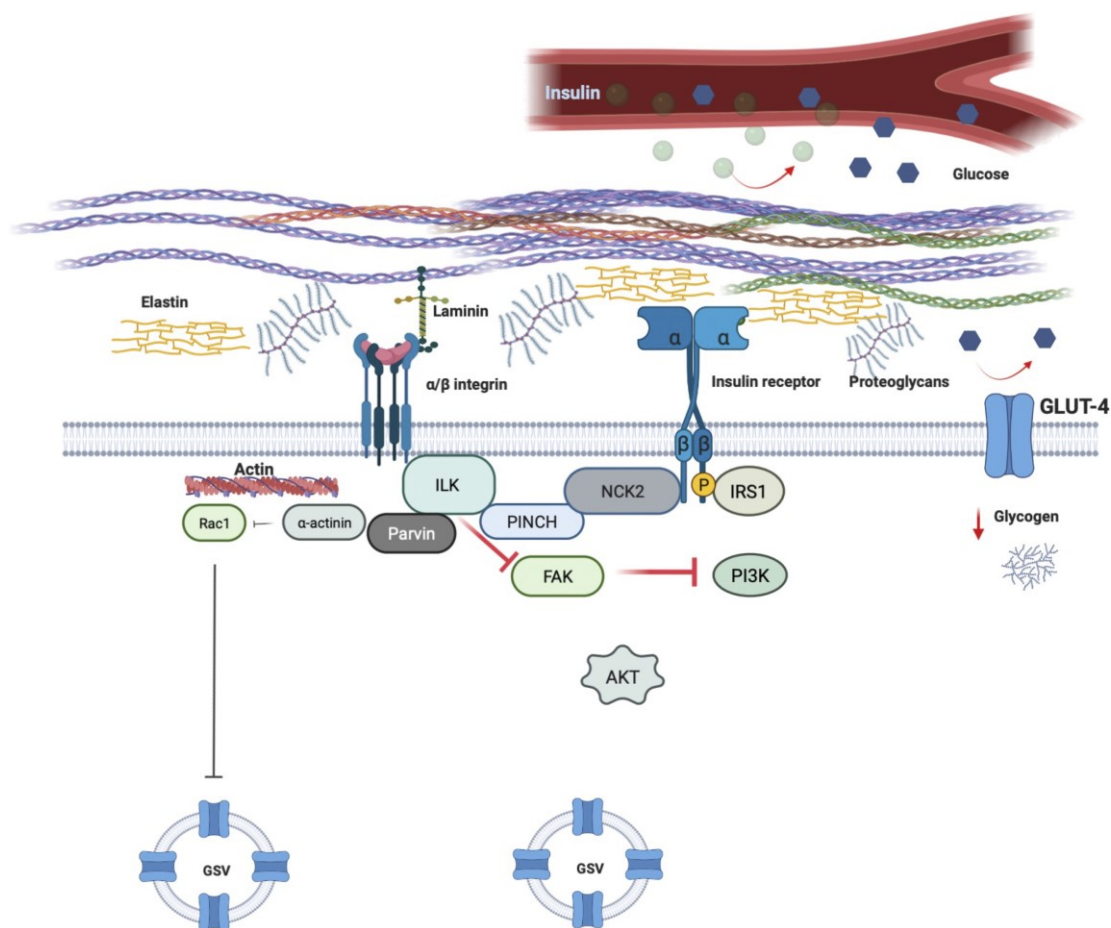


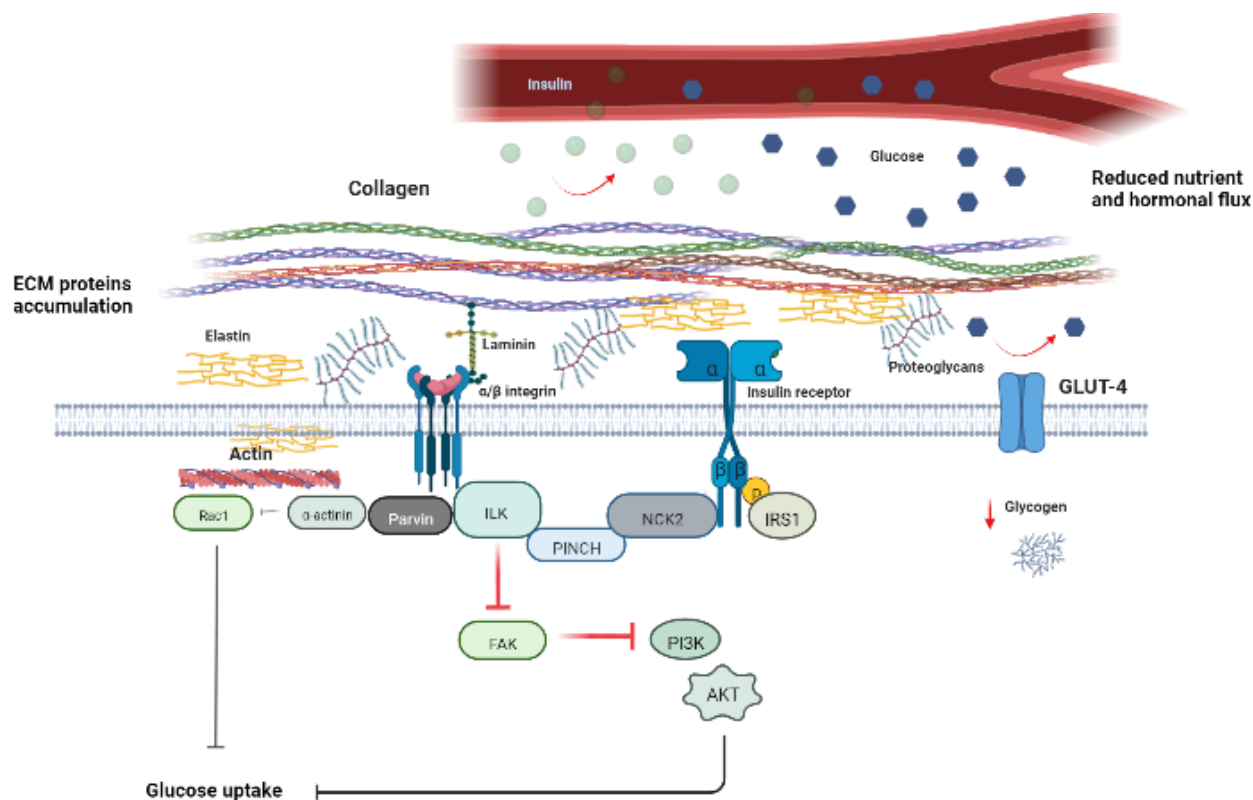
Figure 3A. Shows potential pathway linking integrins and their associated proteins in the regulation of glucose metabolism in muscle. **Figure 3B.** Shows the proposed disruptions to insulin-signalling and glucose transport due to excessive ECM remodelling. Abbreviations: ILK, integrin-linked kinase; FAK, focal adhesion kinase; Akt, protein kinase B; GSV, Glucose Storage Vesicles; IRS1, insulin receptor substrate 1; Rac1, Ras-related C3 botulinum toxin substrate 1; PINCH, particularly interesting new cysteine–histidine-rich protein; TBC1D4, TBC1 domain family member 4.



Fulvia Draicchio has a background in Biotechnology and Genetics before moving into the research theme of Human Metabolism and metabolic disorders of type 2 diabetes and chronic kidney disease in the Laboratory of Dr Richard Mackenzie in collaboration with Dr Nick Burd. Her research suggests that disruption to the transmembrane protein linkage between the cytoskeleton and the extracellular matrix in skeletal muscle may contribute to reduced amino acid metabolism and insulin resistance in hemodialysis.



Richard W.A. Mackenzie is a Reader in Insulin Resistance and Metabolism at the University of Roehampton (London). With over 10 years' experience in investigating the mechanisms that govern contraction- and insulin-stimulated glucose transport in skeletal muscle, he has a particular interest in the role of inositol hexakisphosphate (IP6) kinase 1 (IP6K1) in the inhibition Akt/PKB and reduced insulin signalling in skeletal muscle. His research focus requires molecular and whole-body approaches to investigate the disease processes in human metabolism and type 2 diabetes.

Created in BioRender.com 

Abstract figure. Shows nutrient and hormonal flux impeded by the accumulation of excessive extracellular matrix proteins, causing a physical barrier for glucose uptake in skeletal muscle. Abbreviations: ILK, integrin-linked kinase; FAK, focal adhesion kinase; AKT protein kinase B; Rac1, Ras-related C3 botulinum toxin substrate 1; PINCH, particularly interesting new cysteine– histidine-rich protein; NCK2, noncatalytic region of tyrosine kinase adaptor protein 2; IRS1, insulin receptor substrate 1; PI3K, phosphatidylinositol 3-kinase.