



Hill, R., Conibear, A., Dewey, W., Kelly, E., & Henderson, G. (2022). Role of Acetaldehyde in Ethanol Reversal of Tolerance to Morphine-Induced Respiratory Depression in Mice. *Advances in drug and alcohol research*, 1. <https://doi.org/10.3389/adar.2021.10143>

Publisher's PDF, also known as Version of record

License (if available):
CC BY

Link to published version (if available):
[10.3389/adar.2021.10143](https://doi.org/10.3389/adar.2021.10143)

[Link to publication record in Explore Bristol Research](#)
PDF-document

This is the final published version of the article (version of record). It first appeared online via Frontiers at <https://doi.org/10.3389/adar.2021.10143>. Please refer to any applicable terms of use of the publisher.

University of Bristol - Explore Bristol Research

General rights

This document is made available in accordance with publisher policies. Please cite only the published version using the reference above. Full terms of use are available: <http://www.bristol.ac.uk/red/research-policy/pure/user-guides/ebr-terms/>



Role of Acetaldehyde in Ethanol Reversal of Tolerance to Morphine-Induced Respiratory Depression in Mice

Rob Hill^{1*†}, Alexandra Conibear¹, William Dewey², Eamonn Kelly¹ and Graeme Henderson¹

¹School of Physiology, Pharmacology and Neuroscience, University of Bristol, Bristol, United Kingdom, ²Department of Pharmacology and Toxicology, Virginia Commonwealth University, Richmond, VA, United States

OPEN ACCESS

Edited by:

Emmanuel Onaivi,
William Paterson University,
United States

Reviewed by:

Ephrem Engidawork,
Addis Ababa University, Ethiopia
Jose A. Moron,
Washington University in St. Louis,
United States
Alex Dopico,
University of Tennessee Health
Science Center (UTHSC),
United States

*Correspondence:

Rob Hill
rob.hill@nottingham.ac.uk

[†]Present address:

Rob Hill
School of Life Sciences, Queen's
Medical Centre, University of
Nottingham, Nottingham,
United Kingdom

Received: 22 October 2021

Accepted: 20 December 2021

Published: 31 January 2022

Citation:

Hill R, Conibear A, Dewey W, Kelly E and Henderson G (2022) Role of Acetaldehyde in Ethanol Reversal of Tolerance to Morphine-Induced Respiratory Depression in Mice. *Adv. Drug. Alco. Res.* 1:10143. doi: 10.3389/adar.2021.10143

Background: Opioid users regularly consume other drugs such as alcohol (ethanol). Acute administration of ethanol rapidly reverses tolerance to morphine-induced respiratory depression. However, recent research has suggested that the primary metabolite of ethanol, acetaldehyde, may play a key role in mediating the CNS effects seen after ethanol consumption. This research investigated the role of acetaldehyde in ethanol reversal of tolerance to morphine-induced respiratory depression.

Methods: Tolerance was induced in mice by 6-days implantation of a 75 mg morphine pellet with control mice implanted with a placebo pellet. Tolerance was assessed by acute morphine administration on day 6 and respiration measured by plethysmography. Levels of acetaldehyde were inhibited or enhanced by pre-treatments with the acetaldehyde chelator D-penicillamine and the inhibitor of acetaldehyde dehydrogenase disulfiram respectively.

Results: Morphine pellet implanted mice displayed tolerance to an acute dose of morphine compared to placebo pellet implanted controls. Acute acetaldehyde administration dose-dependently reversed tolerance to morphine respiratory depression. As previously demonstrated, ethanol reversed morphine tolerance, and this was inhibited by D-penicillamine pre-treatment. An acute, low dose of ethanol that did not significantly reverse morphine tolerance was able to do so following disulfiram pre-treatment.

Conclusion: These data suggest that acetaldehyde, the primary metabolite of ethanol, is responsible for the reversal of morphine tolerance observed following ethanol administration.

Keywords: opioid, ethanol, acetaldehyde, respiration, morphine, tolerance, polydrug, polypharmacology

INTRODUCTION

Heroin users are notorious poly drug users, often taking other drugs such as alcohol (ethanol), benzodiazepines, cocaine, gabapentinoids, other illicit drugs as well as other opioids (1–7). Whilst it is known that opioids such as heroin induce fatal overdose by depressing respiration (8, 9), it is important to understand how the contemporaneous use of other drugs may increase the risk of an overdose event.

As ethanol is a central nervous system (CNS) depressant, the general assumption has been that the depressant effects of ethanol and heroin are simply additive, increasing the degree of respiratory depression and thereby increasing the likelihood of an overdose. In a study of overdose deaths involving both ethanol and heroin (10) reported that high blood ethanol levels were associated with intermittent heroin use and this could reflect additivity. However, they also reported a number of deaths in which blood ethanol and morphine were not high (ethanol < 1,000 mg/L and morphine < 0.5 mg/L). Others have reported that blood alcohol levels in fatal heroin overdoses are not typically high (1, 11–14), suggesting another interaction between heroin and ethanol, beyond simple additivity, may also be occurring (15).

We have previously reported that in mice a low dose of ethanol, which by itself did not depress respiration, rapidly reversed tolerance to both morphine- and oxycodone-induced respiratory depression as well as tolerance to their antinociceptive effects (16–20) but did not reverse tolerance induced by methadone (17). We also observed that a low concentration of ethanol (20 mM) could reverse μ opioid receptor (MOR) desensitization and cellular tolerance to morphine in locus coeruleus (LC) neurons as well as tolerance to oxycodone in dorsal root ganglion neurons (20, 21). Ethanol also reduced the phosphorylation of MOR induced by morphine (21). These data suggest that the effect of ethanol is at the level of cells expressing MOR, most likely by reversing receptor desensitization and thus reducing cellular and *in vivo* tolerance to morphine.

There is substantial evidence that MOR desensitization and tolerance to morphine are mediated primarily by a PKC-dependent mechanism. Exposure to PKC inhibitors reversed morphine-induced MOR desensitization in LC neurons from wild type mice (22, 23) whereas MOR desensitization by morphine was absent in LC neurons from PKC α knock out mice (23). Furthermore, *in vivo* administration of the PKC inhibitors, calphostin C and tamoxifen, significantly reversed morphine- and oxycodone-induced tolerance to respiratory depression (19, 24).

Interestingly, co-administration of a PKC inhibitor and ethanol did not result in enhanced reversal of oxycodone tolerance over ethanol alone (19) suggesting that ethanol may act by inhibiting PKC, thereby reversing morphine tolerance. However, as we have discussed previously (21) the reported effects of ethanol on PKC activity are confusing and contradictory with no effect, slight inhibition and activation having been reported (21, 25–27). This made us consider the possibility that in the brain, acetaldehyde, the primary metabolite of ethanol, rather than ethanol itself might inhibit PKC as has been observed in rat hepatocytes (28) and thus through this mechanism may also reverse morphine tolerance as observed previously through administration of PKC inhibitors.

In the present paper, we have characterised the ability of acetaldehyde to reverse tolerance to morphine respiratory depression and have examined the role of acetaldehyde in ethanol reversal of morphine tolerance.

METHODS AND MATERIALS

Animals

Male CD-1 mice (Charles River, United Kingdom) weighing approximately 30 g were maintained at 22°C on a reversed 12 h dark-light cycle with food and water available *ad libitum*. All experiments were performed in the dark (active) phase. Mice were randomly ascribed to treatment groups with the experimenter blinded to the drug treatment. All procedures were performed in accordance with the United Kingdom Animals (Scientific Procedures) Act 1986, the European Communities Council Directive (2010/63/EU) and the University of Bristol ethical review document.

Measurement of Respiration

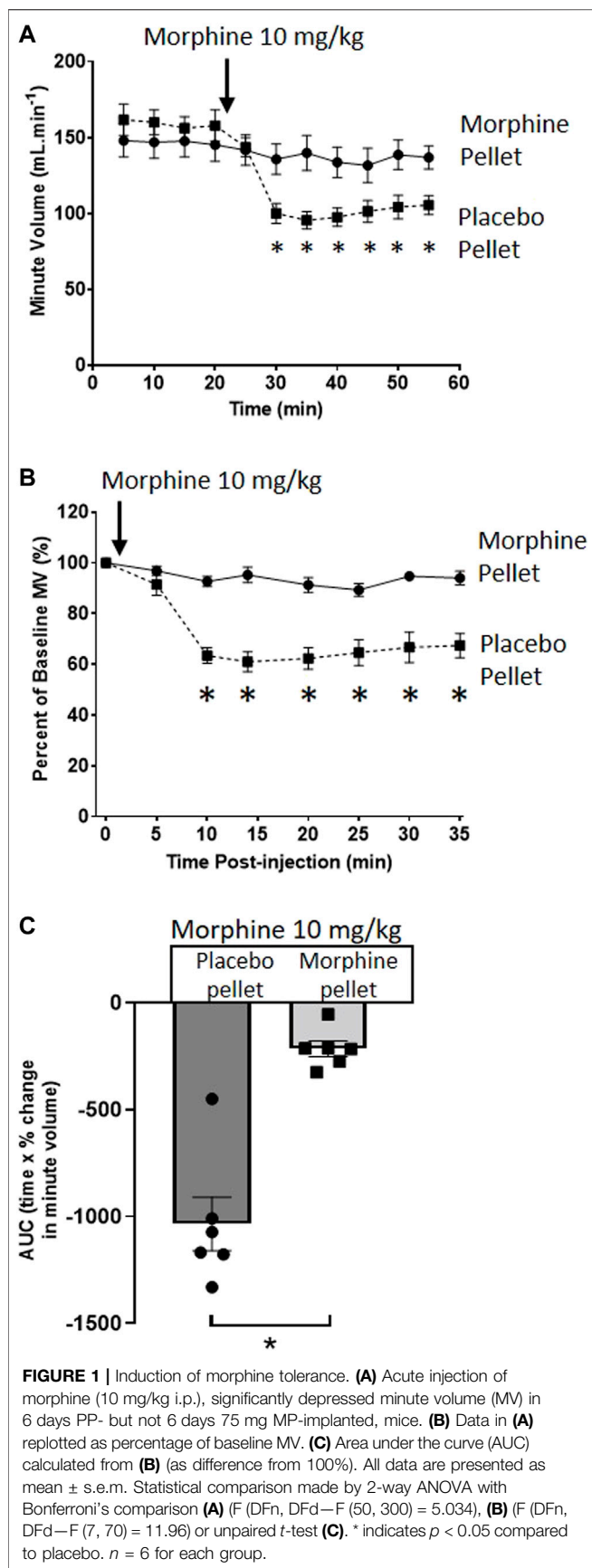
Respiration was measured in freely moving mice using plethysmography chambers (EMKA Technologies, France) supplied with a 5% CO₂ in air mixture (BOC Gas Supplies, United Kingdom) as described previously (17). Rate and depth of respiration were recorded and averaged over 5 min periods (except immediately after drug injection when the time period was approximately 3 min) and converted to minute volume (rate \times tidal volume).

Prolonged Morphine Treatment and Assessment of Tolerance

To induce tolerance to morphine mice were implanted subcutaneously for 6 days with a 75 mg morphine pellet on the lower dorsal flank under isoflurane general anaesthesia as described previously (17). Control mice were implanted with placebo pellets. On day 6 following pellet implantation baseline respiration was recorded for 20 min prior to administration of an acute challenge dose of morphine (10 mg/kg *i.p.*) or vehicle (saline) on one side of the peritoneal cavity. This tolerance protocol was utilised as it has been shown to be sufficient to induce significant tolerance to morphine respiratory depression in mice compared to regular but intermittent administration of morphine (17, 29).

In those experiments in which the effects of acetaldehyde or ethanol on morphine tolerance were studied an *i.p.* injection of acetaldehyde (50 or 100 mg/kg) or ethanol (0.1 or 0.3 g/kg) or vehicle was administered to the opposite side of the peritoneal cavity immediately after the morphine injection. Respiration was then recorded for 35 min following drug/vehicle administration, allowing maximal depression of respiration to develop. In experiments where disulfiram (40 mg/kg) (30, 31) or D-penicillamine (50 mg/kg) (32) were studied, these were administered *i.p.* to mice 30 min prior to the administration of morphine and ethanol/acetaldehyde (*i.e.*, 10 min prior to commencing the measurement of respiration). These drugs were administered *i.p.* on the same side as morphine.

Previously published research administering doses of disulfiram (30 mg/kg) have been shown to significantly inhibit ethanol but not acetaldehyde induced anxiolysis (32), whereas previously published research administering D-penicillamine



(50 mg/kg) has shown a clear inhibition of voluntary ethanol consumption (32) with both papers suggesting the effects are mediated through manipulation of acetaldehyde concentrations. These papers were used to define the doses of disulfiram and D-penicillamine used in the current study.

Data Analysis

For each mouse the change in minute volume, following acute drug administration, has been calculated as a percentage of the pre-drug baseline as described previously (19, 29). Area under the response versus time curve (AUC) was determined using a 100% baseline as described previously (17). Overall changes from a single factor were analysed using a One-way ANOVA with Bonferroni's post-test. GraphPad Prism 8 was used for all statistical analyses. All data are displayed as mean ± standard error of the mean (s.e.m.).

Drugs and Chemicals

Morphine alkaloid pellets and placebo pellets were obtained from the National Institute on Drug Abuse (Bethesda, MD, United States). Morphine hydrochloride, (Macfarlan Smith, United Kingdom), D-penicillamine, disulfiram (both from Tocris United Kingdom) were all dissolved as appropriate in sterile saline. Acetaldehyde (Sigma Aldrich United Kingdom), was diluted (w/v) into sterile saline, using only glassware.

RESULTS

Induction of Morphine Tolerance

We have previously described the induction of tolerance to morphine respiratory depression by subcutaneous implantation of a 75 mg morphine pellet (MP) for 6 days (16). **Figure 1** illustrates the degree of respiratory depression induced by an acute injection of morphine (10 mg/kg i.p.) in both morphine and placebo pellet (PP) implanted mice. Whilst acute morphine depressed respiration in placebo pellet implanted mice, in morphine pellet implanted mice there was little or no depression of respiration indicating the development of tolerance to the respiratory depressant effect of morphine. Morphine depression of respiration was observed to be primarily mediated by a reduction in the frequency of respiratory events (**Table 1**), i.e. a decrease in breaths per minute. This is in concurrence with our previously published observations (17) and was consistent throughout all experiments.

Reversal of Morphine Tolerance by Acute Acetaldehyde Administration

When administered alone to MP-implanted mice, acetaldehyde (50 and 100 mg/kg i.p.) did not alter respiration (**Figures 2A,B,E**). In contrast, co-administration of acetaldehyde with an acute dose of morphine (10 mg/kg i.p.) in MP-implanted mice, dose-dependently increased the degree of respiratory depression seen when compared to respiratory depression induced by the same acute dose of morphine co-administered with vehicle (**Figures 2C-E**). Area under the curve (AUC)

TABLE 1 | Effect of drug treatments on respiratory frequency and tidal volume.

Drug treatment	Pre-drug baseline		15 min drug effect		N
	Frequency (BPM)	Tidal volume (ml/breath)	Frequency (BPM)	Tidal volume (ml/breath)	
Figure 1					
PP + morphine 10 mg/kg	473.2 ± 22.8	0.33 ± 0.02	278.6 ± 17.2 ^a	0.35 ± 0.03	6
MP + morphine 10 mg/kg	509.2 ± 36.4	0.29 ± 0.02	477.4 ± 35.7	0.28 ± 0.01	6
Figure 2					
MP + acet. 50 mg/kg	460.1 ± 31.4	0.33 ± 0.02	507.1 ± 16.1	0.29 ± 0.04	6
MP + acet. 100 mg/kg	529.0 ± 44.8	0.27 ± 0.02	494.6 ± 54.1	0.28 ± 0.02	6
MP + acet. 50 mg/kg and morphine 10 mg/kg	348.1 ± 12.2	0.43 ± 0.04	286.4 ± 13.1 ^a	0.44 ± 0.02	6
MP + acet. 100 mg/kg and morphine 10 mg/kg	427.6 ± 16.0	0.32 ± 0.01	310.8 ± 34.7 ^a	0.31 ± 0.02	6
Figure 3					
PP + morphine 10 mg/kg and ethanol 0.3 g/kg (Veh pre-treatment)	409.9 ± 11.8	0.35 ± 0.02	226.0 ± 18.8 ^a	0.37 ± 0.01	6
PP + morphine 10 mg/kg and ethanol 0.3 g/kg (DP 50 mg/kg pre-treatment)	438.1 ± 20.1	0.36 ± 0.02	259.3 ± 31.5 ^a	0.39 ± 0.03	6
MP + saline (DP 50 mg/kg pre-treatment)	415.7 ± 15.7	0.36 ± 0.02	465.9 ± 19.4	0.31 ± 0.02	6
MP + morphine 10 mg/kg (DP 50 mg/kg pre-treatment)	448.3 ± 20.9	0.32 ± 0.03	445.9 ± 23.1	0.31 ± 0.02	6
MP + ethanol 0.3 g/kg (DP pre-treatment)	501.7 ± 36.4	0.30 ± 0.02	509.2 ± 36.4	0.33 ± 0.01	6
MP + morphine 10 mg/kg (veh pre-treatment)	454.6 ± 32.9	0.33 ± 0.02	407.4 ± 26.9	0.34 ± 0.01	6
MP + morphine 10 mg/kg and ethanol 0.3 g/kg (veh pre-treatment)	424.8 ± 19.6	0.37 ± 0.02	226.7 ± 20.4 ^a	0.35 ± 0.01	6
MP + morphine 10 mg/kg and ethanol 0.3 g/kg (DP 50 mg/kg pre-treatment)	327.7 ± 12.3	0.40 ± 0.03	261.0 ± 9.2 ^a	0.44 ± 0.01	6
Figure 4					
MP + morphine 10 mg/kg (veh pre-treatment)	522.4 ± 18.1	0.29 ± 0.02	461.8 ± 18.6	0.31 ± 0.02	6
MP + morphine 10 mg/kg and ethanol 0.1 g/kg (veh pre-treatment)	425.8 ± 22.2	0.37 ± 0.01	277.3 ± 18.2 ^a	0.44 ± 0.02 ^a	6
MP + morphine 10 mg/kg (disulfiram 40 mg/kg pre-treatment)	471.9 ± 42.5	0.32 ± 0.02	401.9 ± 45.4	0.36 ± 0.03	6
MP + morphine 10 mg/kg and ethanol 0.3 g/kg (disulfiram 40 mg/kg pre-treatment)	485.6 ± 25.1	0.30 ± 0.02	296.3 ± 21.4 [*]	0.33 ± 0.01	6

^aIndicates a significant change ($p < 0.05$) from pre-drug baseline values.

All values are mean ± SEM, of 5-min averages. Pre-drug baseline values are taken from the 15–20-min pre-drug time bin. Post-drug values are taken from the 15–20-min time bin taken from the time of injection. Unless otherwise stated there was no significant change from pre-drug baseline levels. MP, 75-mg morphine pellet, acet, acetaldehyde; DP, D-penicillamine. Values were compared using a paired two-way Student's *t*-test.

analysis shows that the degree of respiratory depression induced by morphine co-administered with acetaldehyde 100 mg/kg in MP-implanted mice was not significantly different from that seen when morphine alone was administered to PP-implanted mice (Figure 2E) demonstrating that tolerance to morphine induced by morphine pellet implantation had been completely reversed.

Effect of Changes in Acetaldehyde Levels on Ethanol Reversal of Morphine Tolerance

To investigate whether acetaldehyde plays a role in ethanol reversal of morphine tolerance, we used two agents that would alter the levels of acetaldehyde in the brain following ethanol administration. D-penicillamine chelates acetaldehyde without affecting ethanol metabolism, thereby reducing free acetaldehyde levels (32–34). Whereas, disulfiram inhibits the metabolism of acetaldehyde by acetaldehyde dehydrogenase, thereby increasing and prolonging acetaldehyde levels in the brain following ethanol administration (35–37).

In PP-implanted mice, pre-treatment for 30 min with D-penicillamine (50 mg/kg i.p.) did not alter the degree of respiratory depression induced by co-administration of morphine (10 mg/kg i.p.) and ethanol (0.3 g/kg i.p.) (Figure 3A). In MP-implanted mice, acute administration of saline, morphine or ethanol did not result in respiratory depression following pre-treatment with D-penicillamine (Figure 3B). Co-administration of ethanol and morphine in saline pre-treated, MP-implanted

mice resulted in significant respiratory depression compared to morphine co-administered with saline (Figures 3C,D). This demonstrates ethanol reversal of morphine tolerance as previously described (16, 17). In contrast however, pre-treatment with D-penicillamine prior to acute morphine and ethanol administration resulted in a significant reduction in the respiratory depression seen with morphine and ethanol in MP-implanted mice (Figures 3C,D).

To investigate the effect of disulfiram, which would be expected to enhance acetaldehyde levels, we chose to examine its ability to enhance the reversal of morphine tolerance by a low dose of ethanol (0.1 g/kg i.p.) that alone produced no significant change in morphine tolerance (Figures 4A–C). Pre-treatment for 30 min with disulfiram (40 mg/kg i.p.) or saline in MP-implanted mice did not alter the tolerance observed following acute morphine (10 mg/kg i.p.) administration (Figures 4A–C). However, pre-treatment with disulfiram significantly enhanced the degree of respiratory depression observed following morphine and low dose ethanol administration to MP-implanted mice (Figures 4A–C). Taken together our findings with D-penicillamine and disulfiram suggest that acetaldehyde, as a metabolite of ethanol, is responsible for the reversal of morphine tolerance by ethanol.

DISCUSSION

In the present paper, we have provided evidence that acetaldehyde is the mediator of ethanol reversal of morphine

Morphine Pellet Implanted Mice

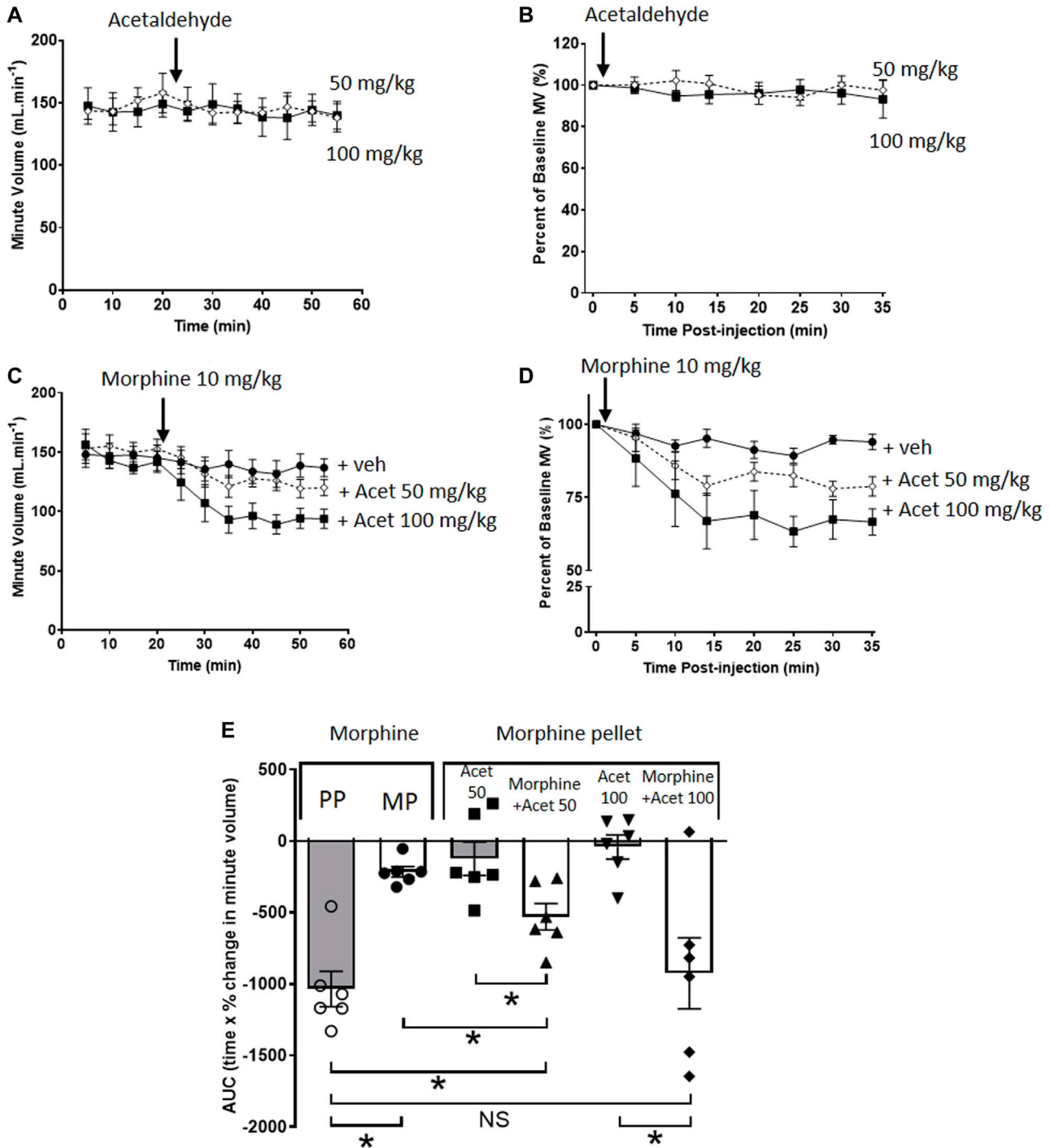
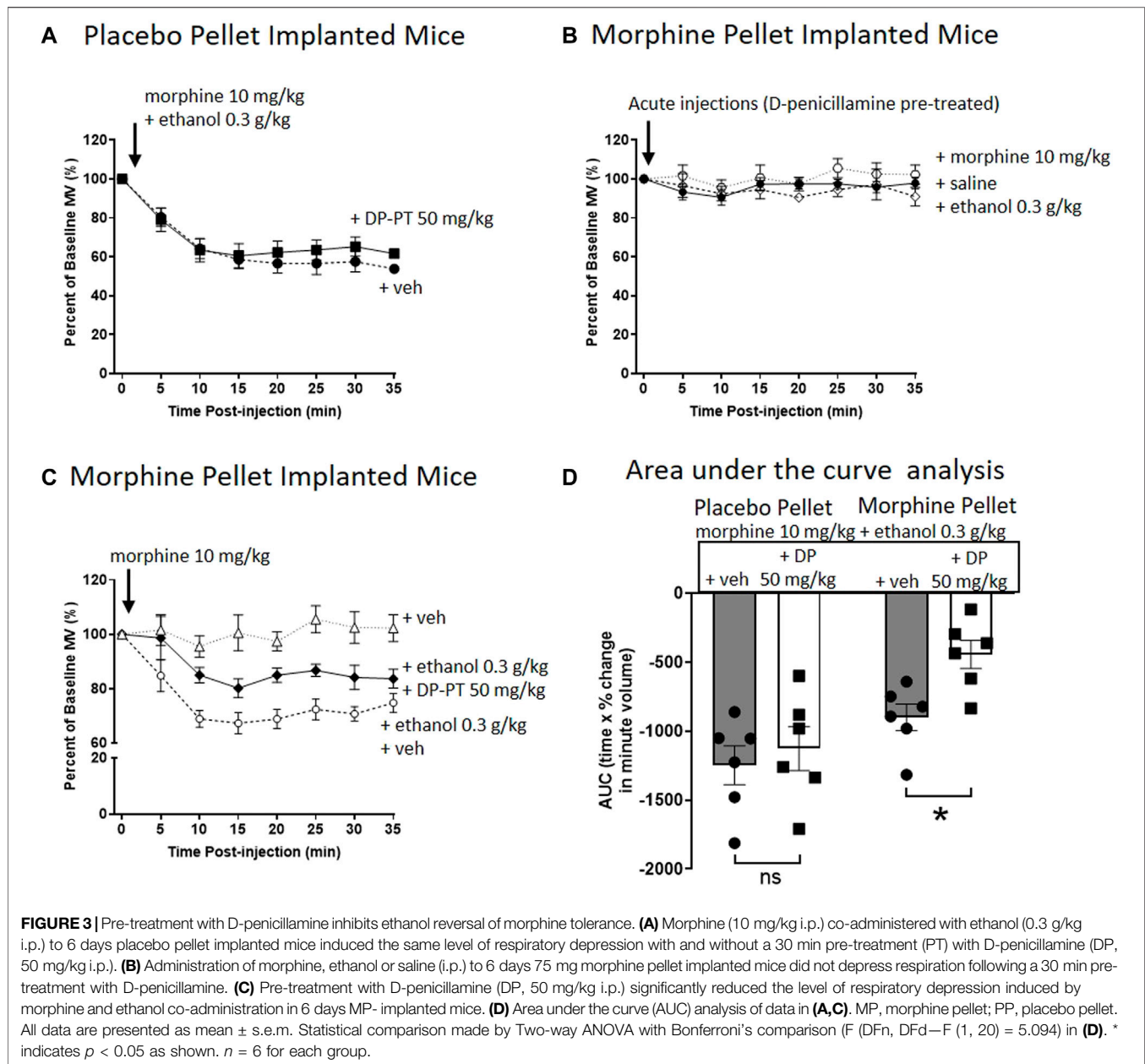


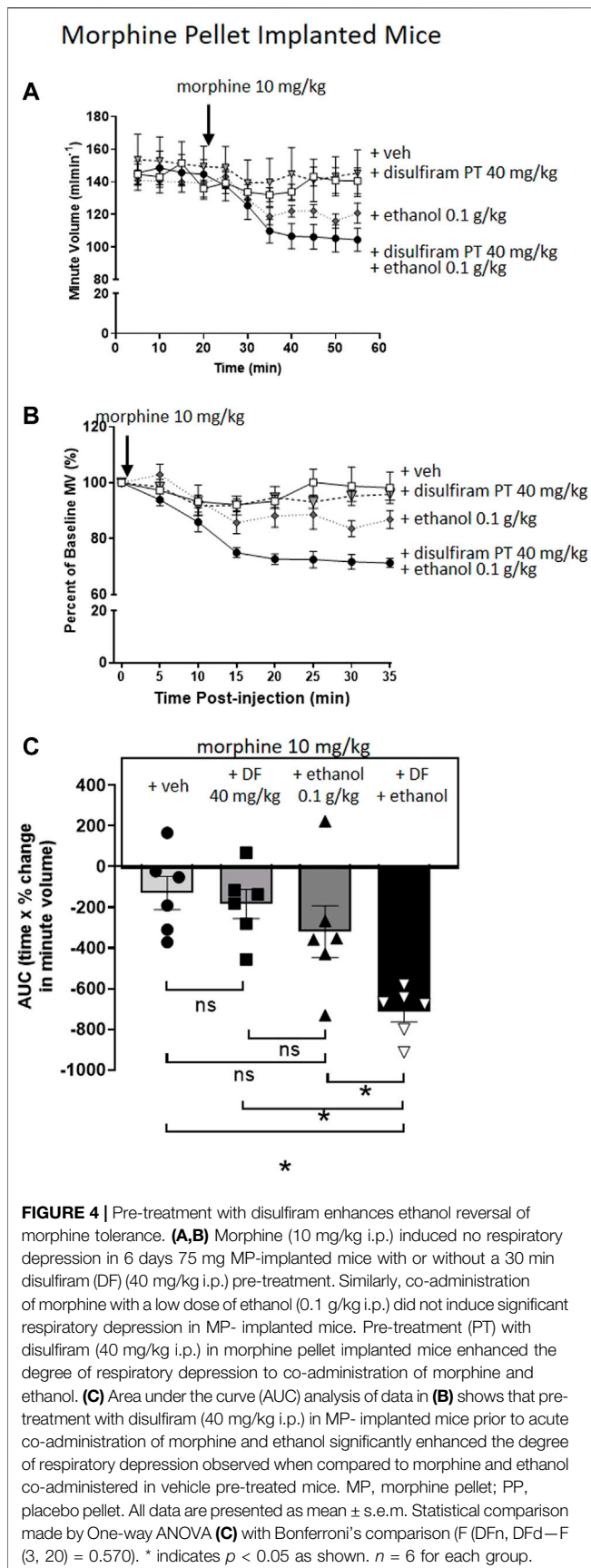
FIGURE 2 | Acetaldehyde modulates morphine tolerance. **(A,B)** Acute administration of acetaldehyde 50 mg/kg i.p. (open symbols) or 100 mg/kg i.p. (closed symbols) did not depress minute volume (MV) in mice implanted for 6 days with a 75 mg MP. **(C,D)** Acute administration of morphine (10 mg/kg i.p.) did not depress respiration in MP- implanted mice indicating that tolerance had developed. Co-administration of acetaldehyde (Acet) and morphine depressed respiration in an acetaldehyde dose-dependent manner. **(E)** Area under the curve (AUC) analysis of data in **(B,D)** shows that when acetaldehyde 50 mg/kg or 100 mg/kg was administered along with acute morphine respiratory depression was restored i.e. morphine tolerance had been reversed. MP, morphine pellet; PP, placebo pellet. All data are presented as mean ± s.e.m. Statistical comparison made by One-way ANOVA with Bonferroni's comparison (F (DFn, DFd)—F (5, 29) = 9.971) in **(E)**. * indicates $p < 0.05$ as shown. $n = 6$ for each group.



tolerance to respiratory depression. We first demonstrated that acute administration of acetaldehyde itself reversed tolerance to morphine-induced respiratory depression in a manner similar to ethanol. Acetaldehyde can be produced from ethanol in the brain through metabolism by brain catalase and CYP2E1 enzymes and has been suggested to mediate many of the psychopharmacological effects of ethanol (38, 39). Acetaldehyde levels in the brain can be manipulated in two ways, chelation by D-penicillamine to reduce free acetaldehyde levels (32–34) and inhibition of acetaldehyde metabolism by disulfiram, an acetaldehyde dehydrogenase inhibitor, to elevate acetaldehyde levels (35–37). We observed that chelation of acetaldehyde with D-penicillamine reduced the reversal of tolerance by ethanol and that disulfiram, which inhibits

acetaldehyde metabolism, potentiated the reversal of tolerance by ethanol. These data strongly support the view that acetaldehyde plays a significant role as a mediator of ethanol reversal of morphine tolerance to respiratory depression.

Disulfiram is used in the treatment of recovering alcoholics (34, 40, 41). In humans taking disulfiram subsequent to consumption of alcohol results in a peripheral accumulation of acetaldehyde that evokes a highly aversive response and is intended to act as a deterrent therapy to prevent relapse (41, 42), though the efficacy of this has been questioned (40–42). In mice administered acetaldehyde or pre-treated with disulfiram and then administered ethanol we did not observe any changes in normal spontaneous behaviours (e.g., excessive grooming of the injection site, writhing, squirming, extreme quiescence) that



might indicate an aversive response although we did not specifically test for aversion in behavioural studies. It has previously been reported that acetaldehyde (100 mg/kg) induced a small but significant degree of anxiogenesis in mice tested in the elevated plus maze (31), even though this dose of acetaldehyde did not result in significantly increased levels of the stress hormone corticosterone. The data in our experiments supports this as there did not appear to be any significant degree of anxiety produced by acetaldehyde that might have affected the breathing of the mice.

Agonist induced MOR desensitisation is thought to be an important component of opioid tolerance (43). For morphine, a relatively low efficacy MOR agonist (44), there is good evidence that PKC is one of the major mediators of MOR desensitization and tolerance (43), though both G-protein receptor kinases and arrestin are also thought to have lesser roles in mediating morphine induced MOR desensitisation (45–47). We and others have previously demonstrated that PKC is an important mediator of cellular tolerance (22) as well as tolerance to its antinociceptive effects (48–50). We have also demonstrated that the PKC inhibitors calphostin C and tamoxifen, were able to reverse tolerance to the respiratory depressant effects of morphine (23). PKC α , PKC γ and to a lesser extent PKC ϵ have been implicated in mediating morphine antinociceptive tolerance (22, 50). In locus coeruleus neurons PKC α is the isoform involved in morphine-induced MOPr desensitization (23). We have recently observed an inability of morphine to induce tolerance to respiratory depression in PKC α knock out mice (Hill and Henderson, unpublished observation). Morphine tolerance can be enhanced by expressing a constitutively active form of PKC α in respiratory control neurons in mice (51). These data suggest a key role for PKC α in tolerance to morphine respiratory depression.

We had previously suggested that ethanol might reverse morphine tolerance through inhibition of PKC α (21) although using purified PKC α we were only able to demonstrate slight (~20%) inhibition of enzyme activity *in vitro* at a relatively high concentration (100 mM) of ethanol. Other investigators had reported conflicting effects of ethanol on PKC activity, some observing no effect, slight inhibition or even activation (25–27). Importantly, acetaldehyde has been shown to inhibit PKC activity in rat hepatocytes (28) and it was this activity in conjunction with the previously observed ability of ethanol and PKC inhibition to independently and non-summatively reverse morphine tolerance, that suggested acetaldehyde may be playing a key role at the level of PKC in this process. In recent years use of gabapentinoids, gabapentin and pregabalin, amongst people with a history of opioid use has increased (4, 6, 52–55) and may contribute to overdose deaths (56, 57). We found that, like ethanol, pregabalin reversed tolerance to respiratory depression induced by morphine (4, 19). Gabapentinoids are known to interfere with the translocation of the $\alpha 2\delta 1$ calcium channel subunit to the plasma membrane (58). It will be of interest to determine whether these drugs can also interact with PKC activation *in vitro* assays.

We have also previously shown that prolonged ethanol administration to mice through a liquid ethanol diet was able to prevent the development of tolerance to morphine respiratory depression (59). These data in conjunction with the currently presented research suggest that prolonged ethanol consumption in heroin users may present significant levels of centrally formed acetaldehyde that chronically inhibits mechanisms of tolerance at the level of the MOR. Whilst the manner of tolerance induction in the presented research is not intended to mimic the opioid users consumption patterns, these data suggest that chronic or acute consumption of ethanol is likely to increase the risk of accidental overdose, particularly in more experienced users where established tolerance may be reversed by ethanol consumption (15).

Further research investigating the effect of centrally administered acetaldehyde on the development and reversal of tolerance to morphine respiratory depression as well as the role of acetaldehyde in the effects of prolonged ethanol administration will be important future avenues of research to clarify further the role of acetaldehyde in ethanol reversal of tolerance to morphine. Importantly, further research should focus on establishing a mechanistic action through which PKC activity or location is altered by ethanol, acetaldehyde and pregabalin. This is likely to provide important insight not only into potentially dangerous polypharmacological scenarios, but also mechanisms through which patient analgesia may be enhanced in incidences of tolerance. The relative risk that this presents with regards to enhanced respiratory depression will need to be carefully considered in this context.

CONCLUSION

We propose that ethanol reversal of morphine tolerance to respiratory depression results from its conversion to acetaldehyde and that it is acetaldehyde, rather than ethanol, which fundamentally interacts with mechanisms of tolerance effective at the MOR.

REFERENCES

- Darke S, Hall W. Heroin Overdose: Research and Evidence-Based Intervention. *J Urban Health Bull N.Y Acad Med* (2003) 80(2):189–200. doi:10.1093/jurban/jtg022
- Borriello R, Carfora A, Cassandro P, Petrella R. A Five Years Study on Drug-Related Deaths in Campania (Italy). *Ann Ist Super Sanita* (2014) 50(4):328–33. doi:10.4415/Ann_14_04_06
- Preston KL, Jobs ML, Phillips KA, Epstein DH. Real-time Assessment of Alcohol Drinking and Drug Use in Opioid-dependent Polydrug Users. *Behav Pharmacol* (2016) 27(7):579–84. doi:10.1097/Fbp.0000000000000250
- Lyndon A, Audrey S, Wells C, Burnell ES, Ingle S, Hill R, et al. Risk to Heroin Users of Polydrug Use of Pregabalin or Gabapentin. *Addiction* (2017) 112(9):1580–9. doi:10.1111/add.13843
- Wang L, Min JE, Krebs E, Evans E, Huang D, Liu L, et al. Polydrug Use and its Association with Drug Treatment Outcomes Among Primary Heroin, Methamphetamine, and Cocaine Users. *Int J Drug Pol* (2017) 49:32–40. doi:10.1016/j.drugpo.2017.07.009
- Moses TEH, Lundahl LH, Greenwald MK. Factors Associated with Sedative Use and Misuse Among Heroin Users. *Drug and Alcohol Dependence* (2018) 185:10–6. doi:10.1016/j.drugalcdep.2017.11.035
- Palamar JJ, Le A, Mateu-Gelabert P. Not just Heroin: Extensive Polysubstance Use Among US High School Seniors Who Currently Use Heroin. *Drug and Alcohol Dependence* (2018) 188:377–84. doi:10.1016/j.drugalcdep.2018.05.001
- Pattinson KTS. Opioids and the Control of Respiration. *Br J Anaesth* (2008) 100(6):747–58. doi:10.1093/bja/aen094
- Montandon G, Ren J, Victoria NC, Liu H, Wickman K, Greer JJ, et al. G-protein-gated Inwardly Rectifying Potassium Channels Modulate Respiratory Depression by Opioids. *Anesthesiology* (2016) 124(3):641–50. doi:10.1097/ALN.0000000000000984
- Ruttenber AJ, Kalter HD, Santinga P The role of ethanol abuse in the etiology of heroin-related death. *J Forensic Sci* (1990) 35:891–900.
- Hickman M, Carrivick S, Paterson S, Hunt N, Zador D, Cusick L, et al. London Audit of Drug-Related Overdose Deaths: Characteristics and Typology, and

DATA AVAILABILITY STATEMENT

The raw data supporting the conclusion of this article will be made available by the authors, without undue reservation.

ETHICS STATEMENT

The animal study was reviewed and approved by the University of Bristol Animal Welfare and Ethics Review Board, prior to authorisation by the Home Office (UK). All procedures were performed in accordance with the United Kingdom Animals (Scientific Procedures) Act 1986, the European Communities Council Directive (2010/63/EU) and the University of Bristol ethical review document.

AUTHOR CONTRIBUTIONS

RH performed all *in vivo* experiments as well as writing the first manuscript draft. All Authors contributed to experimental design and subsequent editing of the manuscript.

FUNDING

The work described in this paper was supported by grants from National Institute of Health (NIH—United States) (RO1DA036975) to WD and GH and the Medical Research Council (MRC) (MR/S010890/1) United Kingdom to GH and EK and (MR/N020669/1) to EK. The funders of the study had no role in the study design, data collection, data analysis, data interpretation or writing of the report.

CONFLICT OF INTEREST

The authors declare that the research was conducted in the absence of any commercial or financial relationships that could be construed as a potential conflict of interest.

- Implications for Prevention and Monitoring. *Addiction* (2007) 102(2):317–23. doi:10.1111/j.1360-0443.2006.01688.x
12. Shah NG, Lathrop SL, Reichard RR, Landen MG. Unintentional Drug Overdose Death Trends in New Mexico, USA, 1990-2005: Combinations of Heroin, Cocaine, Prescription Opioids and Alcohol. *Addiction* (2008) 103(1):126–36. doi:10.1111/j.1360-0443.2007.02054.x
 13. Green TC, Grau LE, Carver HW, Kinzly M, Heimer R. Epidemiologic Trends and Geographic Patterns of Fatal Opioid Intoxications in Connecticut, USA: 1997-2007. *Drug and Alcohol Dependence* (2011) 115(3):221–8. doi:10.1016/j.drugalcdep.2010.11.007
 14. Fugelstad A, Annell A, Ågren G. Long-term Mortality and Causes of Death Among Hospitalized Swedish Drug Users. *Scand J Public Health* (2014) 42(4):364–9. doi:10.1177/1403494814525006
 15. Hickman M, Lingford-Hughes A, Bailey C, Macleod J, Nutt D, Henderson G. Does Alcohol Increase the Risk of Overdose Death: the Need for a Translational Approach. *Addiction* (2008) 103(7):1060–2. doi:10.1111/j.1360-0443.2008.02134.x
 16. Hull LC, Gabra BH, Bailey CP, Henderson G, Dewey WL. Reversal of Morphine Analgesic Tolerance by Ethanol in the Mouse. *J Pharmacol Exp Ther* (2013) 345(3):512–9. doi:10.1124/jpet.112.202184
 17. Hill R, Lyndon A, Withey S, Roberts J, Kershaw Y, MacLachlan J, et al. Ethanol Reversal of Tolerance to the Respiratory Depressant Effects of Morphine. *Neuropsychopharmacol* (2016) 41:762–73. doi:10.1038/npp.2015.201
 18. Jacob JC, Poklis JL, Akbarali HI, Henderson G, Dewey WL. Ethanol Reversal of Tolerance to the Antinociceptive Effects of Oxycodone and Hydrocodone. *J Pharmacol Exp Ther* (2017) 362(1):45–52. doi:10.1124/jpet.117.241083
 19. Hill R, Dewey WL, Kelly E, Henderson G. Oxycodone-induced Tolerance to Respiratory Depression: Reversal by Ethanol, Pregabalin and Protein Kinase C Inhibition. *Br J Pharmacol* (2018) 175(12):2492–503. doi:10.1111/bph.14219
 20. Jacob JC, Sakakibara K, Mischel RA, Henderson G, Dewey WL, Akbarali HI. Ethanol Reversal of Oxycodone Tolerance in Dorsal Root Ganglia Neurons. *Mol Pharmacol* (2018) 93(5):417–26. doi:10.1124/mol.117.110775
 21. Llorente J, Withey S, Rivero G, Cunningham M, Cooke A, Saxena K, et al. Ethanol Reversal of Cellular Tolerance to Morphine in Rat Locus Coeruleus Neurons. *Mol Pharmacol* (2013) 84(2):252–60. doi:10.1124/mol.113.085936
 22. Bailey CP, Llorente J, Gabra BH, Smith FL, Dewey WL, Kelly E, et al. Role of Protein Kinase C and μ -opioid Receptor (MOPr) Desensitization in Tolerance to Morphine in Rat Locus Coeruleus Neurons. *Eur J Neurosci* (2009) 29(2):307–18. doi:10.1111/j.1460-9568.2008.06573.x
 23. Bailey C, Oldfield S, Llorente J, Caunt C, Teschemacher A, Roberts L, et al. Involvement of PKCa and G-Protein-Coupled Receptor Kinase 2 in Agonist-Selective Desensitization of M-Opioid Receptors in Mature Brain Neurons. *Br J Pharmacol* (2009) 158(1):157–64. doi:10.1111/j.1476-5381.2009.00140.x
 24. Withey SL, Hill R, Lyndon A, Dewey WL, Kelly E, Henderson G. Effect of Tamoxifen and Brain-Penetrant Protein Kinase C and C-Jun N-Terminal Kinase Inhibitors on Tolerance to Opioid-Induced Respiratory Depression in Mice. *J Pharmacol Exp Ther* (2017) 361(1):51–9. doi:10.1124/jpet.116.238329
 25. Rex EB, Rankin ML, Ariano MA, Sibley DR. Ethanol Regulation of D1 Dopamine Receptor Signaling Is Mediated by Protein Kinase C in an Isozyme-specific Manner. *Neuropsychopharmacol* (2008) 33(12):2900–11. doi:10.1038/npp.2008.16
 26. Slater SJ, Kelly MB, Larkin JD, Ho C, Mazurek A, Taddeo FJ, et al. Interaction of Alcohols and Anesthetics with Protein Kinase Ca. *J Biol Chem* (1997) 272(10):6167–73. doi:10.1074/jbc.272.10.6167
 27. Reneau J, Reyland ME, Popp RL. Acute Ethanol Exposure Prevents PMA-Mediated Augmentation of N-Methyl-D-Aspartate Receptor Function in Primary Cultured Cerebellar Granule Cells. *Alcohol* (2011) 45(6):595–605. doi:10.1016/j.alcohol.2011.03.002
 28. Domenicotti C, Paola D, Lamedica A, Ricciarelli R, Chiarpotto E, Marinari UM, et al. Effects of Ethanol Metabolism on PKC Activity in Isolated Rat Hepatocytes. *Chemico-Biological Interactions* (1996) 100(2):155–63. doi:10.1016/0009-2797(96)03696-4
 29. Hill R, Disney A, Conibear A, Sutcliffe K, Dewey W, Husbands S, et al. The Novel μ -opioid Receptor Agonist PZM21 Depresses Respiration and Induces Tolerance to Antinociception. *Br J Pharmacol* (2018) 175(13):2653–61. doi:10.1111/bph.14224
 30. Kim AK, Souza-Formigoni MLO. Disulfiram Impairs the Development of Behavioural Sensitization to the Stimulant Effect of Ethanol. *Behav Brain Res* (2010) 207(2):441–6. doi:10.1016/j.bbr.2009.10.032
 31. Escrig MA, Pardo M, Aragon CM, Correa M. Anxiogenic and Stress-Inducing Effects of Peripherally Administered Acetaldehyde in Mice: Similarities with the Disulfiram-Ethanol Reaction. *Pharmacol Biochem Behav* (2012) 100(3):404–12. doi:10.1016/j.pbb.2011.10.002
 32. Font L, Aragon CMG, Miquel M. Voluntary Ethanol Consumption Decreases after the Inactivation of central Acetaldehyde by D-Penicillamine. *Behav Brain Res* (2006) 171(1):78–86. doi:10.1016/j.bbr.2006.03.020
 33. Font L, Luján MÁ, Pastor R. Involvement of the Endogenous Opioid System in the Psychopharmacological Actions of Ethanol: the Role of Acetaldehyde. *Front Behav Neurosci* (2013) 7:93. doi:10.3389/fnbeh.2013.00093
 34. Acquas E, Salamone JD, Correa M. Editorial: Ethanol, its Active Metabolites, and Their Mechanisms of Action: Neurophysiological and Behavioral Effects. *Front Behav Neurosci* (2018) 12:95. doi:10.3389/fnbeh.2018.00095
 35. Westcott JY, Weiner H, Shultz J, Myers RD. *In Vivo* acetaldehyde in the Brain of the Rat Treated with Ethanol. *Biochem Pharmacol* (1980) 29(3):411–7. doi:10.1016/0006-2952(80)90521-3
 36. He Z, Ericksson P, Alho H, Harmoinen A, Nordback I. Effects on Endogenous Acetaldehyde Production by Disulfiram and Ethanol Feeding on Rat Pancreas. *J Gastrointest Surg* (2001) 5(5):531–9. doi:10.1016/s1091-255x(01)80092-5
 37. Schicchi A, Besson H, Rasamison R, Berleur M-P, Mégarbane B. Fomepizole to Treat Disulfiram-Ethanol Reaction: a Case Series. *Clin Toxicol* (2020) 58(9):922–5. doi:10.1080/15563650.2019.1708091
 38. Correa M, Manrique HM, Font L, Escrig MA, Aragon CMG. Reduction in the Anxiolytic Effects of Ethanol by Centrally Formed Acetaldehyde: the Role of Catalase Inhibitors and Acetaldehyde-Sequestering Agents. *Psychopharmacology* (2008) 200(4):455–64. doi:10.1007/s00213-008-1219-3
 39. Correa M, Salamone JD, Segovia KN, Pardo M, Longoni R, Spina L, et al. Piecing Together the Puzzle of Acetaldehyde as a Neuroactive Agent. *Neurosci Biobehavioral Rev* (2012) 36(1):404–30. doi:10.1016/j.neubiorev.2011.07.009
 40. De Sousa A. The Pharmacotherapy of Alcohol Dependence: a State of the Art Review. *Mens Sana Monogr* (2010) 8(1):69–82. doi:10.4103/0973-1229.58820
 41. Mutschler J, Grosshans M, Soyka M, Rösner S. Current Findings and Mechanisms of Action of Disulfiram in the Treatment of Alcohol Dependence. *Pharmacopsychiatry* (2016) 49(4):137–41. doi:10.1055/s-0042-103592
 42. Grant JE, Potenza MN, Kraus SW, Petrakis IL. Naltrexone and Disulfiram Treatment Response in Veterans with Alcohol Dependence and Co-occurring Problem-Gambling Features. *J Clin Psychiatry* (2017) 78(9):e1299–e1306. doi:10.4088/JCP.16m11220
 43. Williams JT, Ingram SL, Henderson G, Chavkin C, von Zastrow M, Schulz S, et al. Regulation of μ -Opioid Receptors: Desensitization, Phosphorylation, Internalization, and Tolerance. *Pharmacol Rev* (2013) 65(1):223–54. doi:10.1124/pr.112.005942
 44. McPherson J, Rivero G, Baptist M, Llorente J, Al-Sabah S, Krasel C, et al. μ -Opioid Receptors: Correlation of Agonist Efficacy for Signalling with Ability to Activate Internalization. *Mol Pharmacol* (2010) 78(4):756–66. doi:10.1124/mol.110.066613
 45. Lowe JD, Sanderson HS, Cooke AE, Ostovar M, Tsisanova E, Withey SL, et al. Role of G Protein-Coupled Receptor Kinases 2 and 3 in μ -Opioid Receptor Desensitization and Internalization. *Mol Pharmacol* (2015) 88(2):347–56. doi:10.1124/mol.115.098293
 46. Mann A, Illing S, Miess E, Schulz S. Different Mechanisms of Homologous and Heterologous μ -opioid Receptor Phosphorylation. *Br J Pharmacol* (2015) 172(2):311–6. doi:10.1111/bph.12627
 47. Quillinan N, Lau EK, Virk M, von Zastrow M, Williams JT. Recovery from μ -Opioid Receptor Desensitization after Chronic Treatment with Morphine and Methadone. *J Neurosci* (2011) 31(12):4434–43. doi:10.1523/jneurosci.4874-10.2011
 48. Ueda H, Inoue M, Matsumoto T. Protein Kinase C-Mediated Inhibition of μ -Opioid Receptor Internalization and its Involvement in the Development of Acute Tolerance to Peripheral μ -Agonist Analgesia. *J Neurosci* (2001) 21(9):2967–73. doi:10.1523/jneurosci.21-09-02967.2001
 49. Bohn LM, Lefkowitz RJ, Caron MG. Differential Mechanisms of Morphine Antinociceptive Tolerance Revealed in β Arrestin-2 Knock-Out Mice. *J Neurosci* (2002) 22(23):10494–500. doi:10.1523/jneurosci.22-23-10494.2002

50. Smith FL, Javed R, Elzey MJ, Welch SP, Selley D, Sim-Selley L, et al. Prolonged Reversal of Morphine Tolerance with No Reversal of Dependence by Protein Kinase C Inhibitors. *Brain Res* (2002) 958(1):28–35. doi:10.1016/s0006-8993(02)03394-2
51. Lin H-Y, Law P-Y, Loh HH. Activation of Protein Kinase C (PKC) α or PKC ϵ as an Approach to Increase Morphine Tolerance in Respiratory Depression and Lethal Overdose. *J Pharmacol Exp Ther* (2012) 341(1):115–25. doi:10.1124/jpet.111.188235
52. Schifano F. Misuse and Abuse of Pregabalin and Gabapentin: Cause for Concern? *CNS Drugs* (2014) 28(6):491–6. doi:10.1007/s40263-014-0164-4
53. McNamara S, Stokes S, Kilduff R, Shine A. Pregabalin Abuse Amongst Opioid Substitution Treatment Patients. *Ir Med J* (2015) 108(10):309–10.
54. Evoy KE, Covvey JR, Peckham AM, Ochs L, Hultgren KE. Reports of Gabapentin and Pregabalin Abuse, Misuse, Dependence, or Overdose: An Analysis of the Food and Drug Administration Adverse Events Reporting System (FAERS). *Res Soc Administrative Pharm* (2019) 15(8):953–8. doi:10.1016/j.sapharm.2018.06.018
55. Evoy KE, Sadrameli S, Contreras J, Covvey JR, Peckham AM, Morrison MD. Abuse and Misuse of Pregabalin and Gabapentin: a Systematic Review Update. *Drugs* (2020) 81:125–56. doi:10.1007/s40265-020-01432-7
56. Hakkinen M, Vuori E, Kalso E, Gergov M, Ojanpera I. Pregabalin and Gabapentin Abuse and Toxicity as Disclosed from Postmortem Cases. *Clin Toxicol* (2014) 52(4):329.
57. Häkkinen M, Vuori E, Kalso E, Gergov M, Ojanperä I. Profiles of Pregabalin and Gabapentin Abuse by Postmortem Toxicology. *Forensic Sci Int* (2014) 241:1–6. doi:10.1016/j.forsciint.2014.04.028
58. Field MJ, Cox PJ, Stott E, Melrose H, Offord J, Su T-Z, et al. Identification of the α_1 -1 Subunit of Voltage-dependent Calcium Channels as a Molecular Target for Pain Mediating the Analgesic Actions of Pregabalin. *Proc Natl Acad Sci* (2006) 103(46):17537–42. doi:10.1073/pnas.0409066103
59. Hill R, Roberts J, Maclachlan J, Dewey W, Kelly E, Henderson G. Prolonged Ethanol Administration Prevents the Development of Tolerance to Morphine-Induced Respiratory Depression. *Drug and Alcohol Dependence* (2019) 205:107674. doi:10.1016/j.drugalcdep.2019.107674

Copyright © 2022 Hill, Conibear, Dewey, Kelly and Henderson. This is an open-access article distributed under the terms of the Creative Commons Attribution License (CC BY). The use, distribution or reproduction in other forums is permitted, provided the original author(s) and the copyright owner(s) are credited and that the original publication in this journal is cited, in accordance with accepted academic practice. No use, distribution or reproduction is permitted which does not comply with these terms.