

University of Dundee

Evolution of factors shaping the endoplasmic reticulum

Kontou, Aspasia; Herman, Emily K.; Field, Mark C.; Dacks, Joel B.; Koumandou, V. Lila

Published in:
Traffic

DOI:
[10.1111/tra.12863](https://doi.org/10.1111/tra.12863)

Publication date:
2022

Licence:
CC BY

Document Version
Publisher's PDF, also known as Version of record

[Link to publication in Discovery Research Portal](#)

Citation for published version (APA):

Kontou, A., Herman, E. K., Field, M. C., Dacks, J. B., & Koumandou, V. L. (2022). Evolution of factors shaping the endoplasmic reticulum. *Traffic*, 23(9), 462-473. <https://doi.org/10.1111/tra.12863>

General rights





Copyright and moral rights for the publications made accessible in Discovery Research Portal are retained by the authors and/or other copyright owners and it is a condition of accessing publications that users recognise and abide by the legal requirements associated with these rights.

- Users may download and print one copy of any publication from Discovery Research Portal for the purpose of private study or research.
- You may not further distribute the material or use it for any profit-making activity or commercial gain.
- You may freely distribute the URL identifying the publication in the public portal.

Take down policy

If you believe that this document breaches copyright please contact us providing details, and we will remove access to the work immediately and investigate your claim.

Evolution of factors shaping the endoplasmic reticulum

Aspasia Kontou¹ | Emily K. Herman²  | Mark C. Field^{3,4}  | Joel B. Dacks^{2,4,5}  |
V. Lila Koumandou¹ 

¹Genetics Laboratory, Department of Biotechnology, Agricultural University of Athens, Athens, Greece

²Division of Infectious Diseases, Department of Medicine, University of Alberta, Edmonton, Alberta, Canada

³School of Life Sciences, University of Dundee, Dundee, UK

⁴Biology Centre, Czech Academy of Sciences, České Budějovice, Czech Republic

⁵Centre for Life's Origin and Evolution, Department of Genetics, Evolution and Environment, University College of London, London, UK

Correspondence

V. Lila Koumandou, Genetics Laboratory, Department of Biotechnology, Agricultural University of Athens, Iera Odos 75, Athens 11855, Greece.

Email: koumandou@aua.gr

Present address

Emily K. Herman, Department of Agricultural, Food and Nutritional Science, Faculty of Agricultural, Life and Environmental Sciences, University of Alberta, Edmonton, Alberta, Canada.

Funding information

Natural Sciences and Engineering Research Council of Canada, Grant/Award Numbers: RES0046091, RES0043758; Wellcome Trust, Grant/Award Number: 204697/Z/16/Z

Abstract

Endomembrane system compartments are significant elements in virtually all eukaryotic cells, supporting functions including protein synthesis, post-translational modifications and protein/lipid targeting. In terms of membrane area the endoplasmic reticulum (ER) is the largest intracellular organelle, but the origins of proteins defining the organelle and the nature of lineage-specific modifications remain poorly studied. To understand the evolution of factors mediating ER morphology and function we report a comparative genomics analysis of experimentally characterized ER-associated proteins involved in maintaining ER structure. We find that reticulons, REEPs, atlastins, Ufe1p, Use1p, Dsl1p, TBC1D20, Yip3p and VAPs are highly conserved, suggesting an origin at least as early as the last eukaryotic common ancestor (LECA), although many of these proteins possess additional non-ER functions in modern eukaryotes. Secondary losses are common in individual species and in certain lineages, for example lunapark is missing from the Stramenopiles and the Alveolata. Lineage-specific innovations include protrudin, Caspr1, Arl6IP1, p180, NogoR, kinesin and CLIMP-63, which are restricted to the Opisthokonta. Hence, much of the machinery required to build and maintain the ER predates the LECA, but alternative strategies for the maintenance and elaboration of ER shape and function are present in modern eukaryotes. Moreover, experimental investigations for ER maintenance factors in diverse eukaryotes are expected to uncover novel mechanisms.

KEYWORDS

comparative genomics, endomembrane system, endoplasmic reticulum, eukaryogenesis, evolution, last eukaryotic common ancestor, phylogeny, reticulons, vesicular traffic

1 | INTRODUCTION

The eukaryotic endomembrane system mediates export of macromolecules, uptake of molecules and particles from the environment, together with degradation and intracellular transport of proteins, lipids and nutrients.¹ A central compartment is the endoplasmic reticulum (ER), where nascent membrane and secretory proteins are translocated, folded and transported to the Golgi

complex for modification, packaging into vesicles and targeting to the plasma membrane or internal organelles.² By contrast, endocytosed material is packaged into vesicles at the plasma membrane and trafficked to endosomes from where it is either recycled to the plasma membrane or proceeds to late endosomes, multivesicular bodies and the lysosome. Defective cellular components can also be directed to the lysosome for degradation, via autophagy.³ Retrograde pathways recycle material from the

This is an open access article under the terms of the [Creative Commons Attribution](https://creativecommons.org/licenses/by/4.0/) License, which permits use, distribution and reproduction in any medium, provided the original work is properly cited.

© 2022 The Authors. *Traffic* published by John Wiley & Sons Ltd.

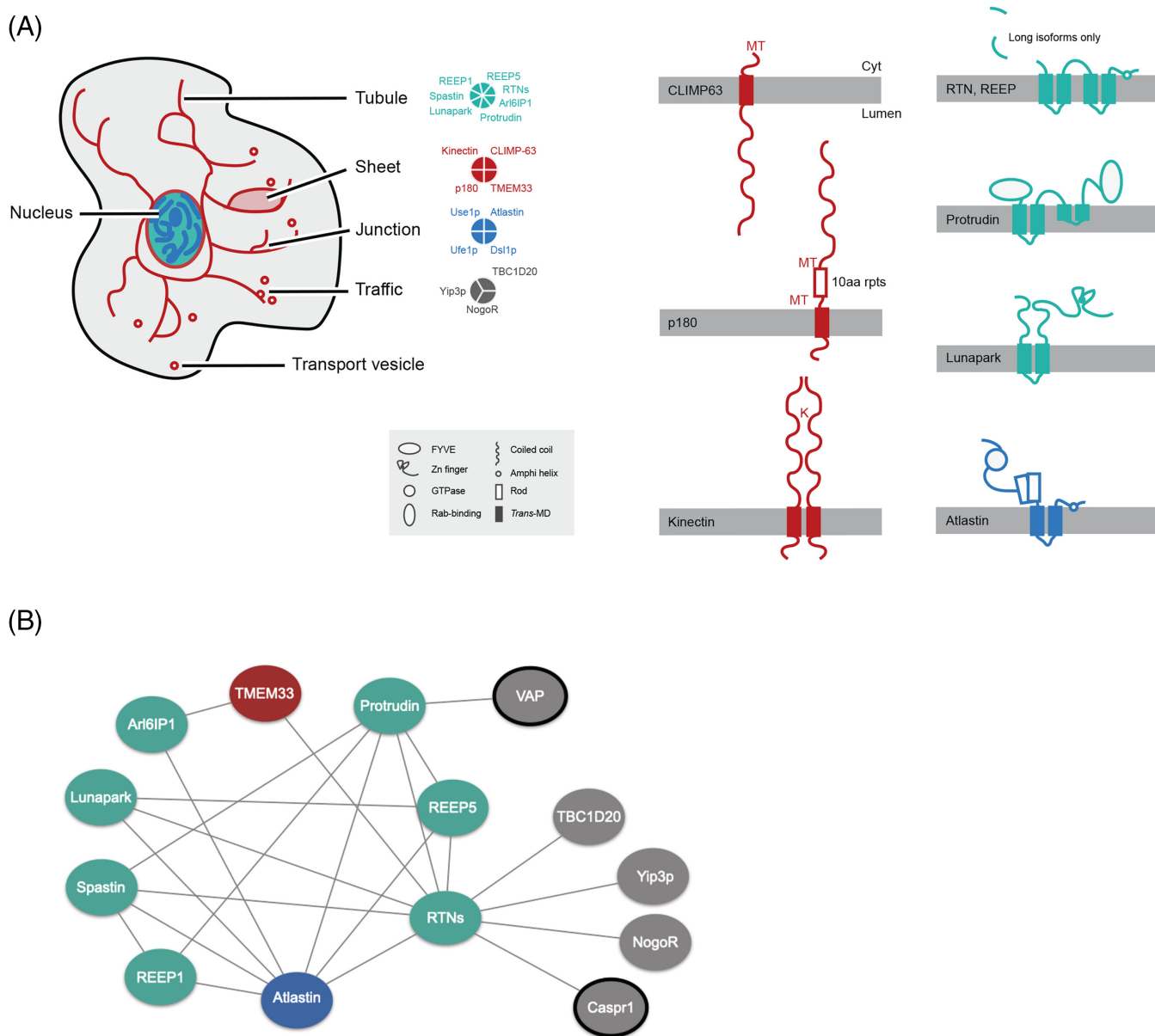


FIGURE 1 Location, architecture and interactions of ER morphology proteins. Proteins are colour-coded based on their function in shaping ER tubules (teal), sheets (red), junctions (blue) and other functions in trafficking (grey). A, Schematic of the location and domain architecture of ER morphology proteins. Membrane-spanning proteins are shown with the cytoplasmic side facing up. Schematically represented domains are shown in the inset. The approximate binding positions of CLIMP-63 and p180 to microtubules (MT), and of kinectin to kinesin (K) are also indicated. B, Protein-protein interactions between ER morphology proteins. For further details see Table S1. VAP and Caspr1 are not shown in panel A. Arl6IP1, ADP-ribosylation factor-like 6 interacting protein 1; Caspr1, contactin-associated protein 1; CLIMP-63, cytoskeleton-linking membrane protein 63; Dsl1p, depends on SLY1-20; NogoR, Nogo receptor; p180, 180 kDa ribosome receptor; REEP, receptor expression-enhancing proteins; RTNs, reticulons; TBC1D20, Rab1 GAP TBC-domain family 20; TMEM33, *trans*-membrane protein 33; Ufe1p, unknown function essential; Use1p, unconventional SNARE in the ER; VAP, VAMP-associated protein; Yip3p, Ypt-interacting protein 3.

endosome to the Golgi complex and from the Golgi complex back to the ER.^{2,4}

Structural, compositional and functional integrity of the endomembrane system requires the activity of specificity factors and structural proteins directing traffic between compartments; many of these proteins have a clear evolutionary history and arose through paralog expansion.⁵⁻⁷ Multiple studies have revealed a highly complex last

eukaryotic common ancestor (LECA), with compelling evidence that both major organelles and trafficking routes were established before diversification of modern eukaryotic lineages.⁸ A general model for early establishment of ancestral endo- and exocytic pathways has emerged.⁹ An archaeal contributor to eukaryogenesis is generally accepted and the Asgard archaea are currently the most likely candidates for this role,¹⁰ but while potential ancestors of eukaryotic

compartment specificity proteins are present in these prokaryotes, there is no evidence for compartmentalization based on mechanisms homologous to eukaryotic systems, and images from the first cultured representative Asgard archaea did not reveal internal membranous structures.¹¹ Overall, the most parsimonious model is that the majority of the endomembrane system arose between an earlier 'first' eukaryotic common ancestor (FECA) and LECA, but only general principles of this process are understood.^{12,13}

The LECA possessed mitochondria, substantial internal differentiated compartments and a well-defined nucleus, but the order in which each arose remains unclarified.^{8,14} There are multiple models for the origin of the ER¹⁵ which are constrained by the presence of the Sec61 translocon, homologous with the SecY bacterial/archaeal export system.^{16,17} In mitochondria-early models, acquisition of the mitochondrion drives development of the endomembrane system, with the ER as an elaboration of the mitochondrial outer membrane.^{18,19} In mitochondria-late models, the ER arose by elaboration of either the plasma membrane or the nuclear envelope.¹⁴ N-Glycosylation, a major ER function, likely originated in archaea, suggesting that quality control and ER-associated degradation were also present in the LECA.²⁰

Studies of the evolution of factors shaping the ER are lacking and many of the proteins involved have no obvious relationship to general endomembrane specificity factors, precluding inclusion into many prior models of organelle origins.²¹ The ER is a network of sheet-like cisternae and interconnected tubules and in most cells is contiguous with the nuclear envelope (Figure 1A). Tubule formation is mediated by reticulons, REEP5/DP1/Yop1, REEP1, Arl6IP1/ARMER, spastin, lunapark and protrudin.²²⁻²⁴ Furthermore, Atlastin/Sey1p, Use1p, Ufe1p and Dsl1p play critical roles in tubule homotypic fusion leading to the emergence of ER junctions and branches.²²⁻²⁷ CLIMP-63, kinectin, p180, TMEM33, as well as reticulons are thought to regulate the sheet-like ER conformation.²² In mammalian cells ER organization depends on the cytoskeleton: REEP1 interacts directly with microtubules through a C-terminal cytoplasmic domain,²⁸ while STIM1 is concentrated at ER-tubule tips and mediates tip attachment complex (TAC) functions, a mechanism by which ER tubules extend along microtubules.²⁹

Reticulons orthologs are present in mammals, fungi, amoebozoa and plants, exhibit distinct tissue-specific expression patterns^{30,31} and are involved in diverse functions, including ER network formation, ER-Golgi trafficking and apoptosis.³² As such, reticulons are implicated in various neurodegenerative diseases, including Alzheimer's dementia, amyotrophic lateral sclerosis, multiple sclerosis and hereditary spastic paraplegia (HSP). Reticulons share the eponymous reticulon homology domain (RHD) near the C-terminus which consists of two short hairpin *trans*-membrane domains and is important for subcellular localization and protein-protein interactions.^{21,30,32} Reticulons, REEPs and Arl6IP1 are involved in forming high-curvature tubular polygonal networks through their double hairpin *trans*-membrane segments (Figure 1A), which can form a wedge conformation.^{22,23,33} Reticulons can act synergistically with REEPs, while oligomerization into immobile higher-ordered structures is a requirement for proper tubule formation.²⁹ Arl6IP1-regulated ER tubulation is only

thought to be characteristic of metazoa.³³ Spastin, a disease gene associated with HSP, is a microtubule-severing AAA ATPase,³⁴ and the M1 isoform, through a hairpin partially inserted in the ER membrane, participates in ER network formation.³⁵ Spastin also interacts with protrudin, atlastin and REEP1.²² Protrudin and lunapark are structurally similar proteins with an antagonistic role towards atlastin in ER-tubule fusion.^{36,37} Atlastins have only been found in metazoa but similar functions are supported in other eukaryotes by Sey1p.^{25,38} Use1p, Ufe1p and Dsl1p are involved in an atlastin/Sey1p-independent ER fusion pathway in *Saccharomyces cerevisiae*.^{27,38,39} CLIMP-63, kinectin and p180 each possess coiled-coil domains (Figure 1A), important for controlling shape and stacking of ER sheets.^{40,41}

Many of these proteins have additional interactors (Figure 1B and Table S1) or function in other aspects of intracellular trafficking. For example, reticulons associate with Yip3p/PRA1 (prenylated Rab acceptor), a guanine dissociation factor, and with TBC1D20, a GTPase-activating protein which modulates Rab1 and Rab2 activity.^{32,42,43} VAP-A affects the subcellular localization of protrudin,⁴⁴ while Ufe1p, Use1p and Dsl1p are also involved in retrograde vesicular transport.^{45,46} Nogo-A (RTN4A) is bound by the Nogo receptor (NogoR), a brain-specific, leucine-rich-repeat protein, an interaction sufficient to inhibit neurite outgrowth in the central nervous system.⁴⁷ Nogo-A also interacts with the cell adhesion molecule Caspr1, important for localizing potassium channels at axonal paranodes^{32,48} and for propagation of action potentials, obviously animal-specific functions.

The ER is highly extensive, contributing up to ~50% of total membrane in mammalian cells and, for some eukaryogenesis models, ER origin is crucial for understanding endomembrane system evolution.⁴⁹ Using comparative genomics and phylogenetics we reconstruct the evolution of factors shaping the ER together with protein interactors. While we find a highly conserved core, there is also evidence for post-LECA diversification, indicating ongoing adaptation of the ER.

2 | RESULTS AND DISCUSSION

To reconstruct the evolutionary history of proteins involved in ER morphology, we searched 50 high quality predicted proteomes using protein sequences of ER morphology-associated proteins from *S. cerevisiae* and *Homo sapiens* as queries; additional criteria, including best reciprocal BLAST, HMMer and retention of domain architecture were also employed (see Section 4). The distribution of these proteins based upon recovered homologs is shown in Figure 2. The major feature to emerge is exceptional widespread conservation, indicating an ancient origin for much of the machinery supporting ER structure and function prior to the LECA (Figure 3 and Table 1). For clarity, we consider proteins below according to their described functions.

2.1 | ER tubules

Reticulons and REEP5/Yop1p act synergistically in formation of ER tubules and are highly conserved in multiple lineages (Figures 2 and 3)

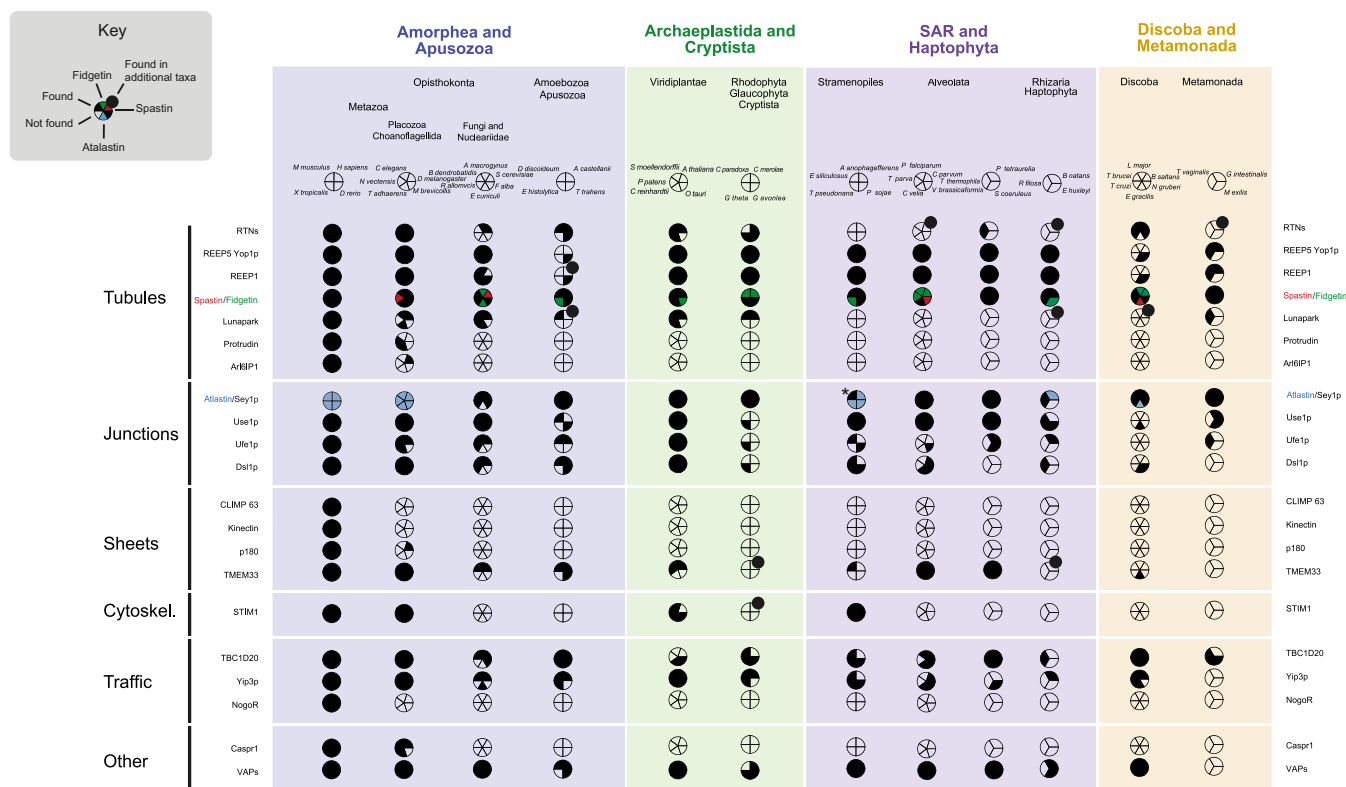


FIGURE 2 Distribution of ER morphology proteins across eukaryotic lineages. Data are based on BLAST and HMMer results together with alignments and phylogenetic reconstruction. Filled sectors indicate the presence of the protein and empty sectors indicate that the relevant gene was not found. Large taxon groupings are colour coded, and the proteins are grouped based on their function in shaping the morphology of the ER, as in Table 1. Accession numbers are given in Table S3, and complete species names in Table S5. For spastin/fidgetin, the black colour indicates presence of both, pink indicates presence of spastin only, and green indicates presence of fidgetin only (Figure S3). *For Atlasin/Sey1p, blue colour indicates presence of Atlasin, black indicates presence of Sey1p, *Ectocarpus siliculosus* has both (Figure S4). For lineages checked with wider species sampling on the EukProt server (Table S6) a tangential bullet indicates that positive hits were found in other species of that lineage.

and likely originated in the LECA.⁵⁰ For reticulons, independent gene duplications occurred in multiple lineages, leading to the emergence of two reticulon proteins in fungi (*S. cerevisiae*, *Allomyces macrogynus*), multiple proteins in Cryptophyta (three in *G. theta* and two in *G. avonlea*) and many in plants (Figure 4 and Table S2). The duplications that led to emergence of four reticulon paralogs in *H. sapiens* must have taken place in the common ancestor of the vertebrates (Figure 4).

The REEP family has six paralogs in *H. sapiens*, which are highly similar. Therefore, discriminating between REEP1 and REEP5 from BLAST and HMMer searches was only possible in vertebrates (*Mus musculus*, *Danio rerio* and *Xenopus tropicalis*). Phylogenetic reconstruction suggests an early duplication in the Opisthokonta leading to two clades, one with vertebrate REEPs 1–4, and one with REEPs 5–6 (Figure S1). Except for *S. cerevisiae*, *Rozella allomycis* and *Thecamonas trahens*, all other opisthokonts have at least two REEP paralogs and all metazoa have a representative in each of the two clades. Furthermore, lineage-specific duplications are seen for *D. rerio*, *Drosophila melanogaster* and *A. macrogynus*. Expansions of the reticulon and REEP protein families (as well as the VAPs, see below) are particularly common within the Viridiplantae (Table S2). This is consistent with

many examples of expansions in the endomembrane system protein cohort in higher plants⁵¹ and may be related to the frequent whole genome duplications known to have occurred in this lineage.^{52–54} In addition, these expanded protein families may be associated with tissue-specific functions.^{55,56} In metazoa, there is also evidence for tissue or developmental-linked expression for reticulon paralogs and their isoforms, as well as for REEPs^{30,31,57–59}; it is thus probable that expansions of these protein families in other organisms resulted in differentiated functions.

Lunapark is conserved in metazoa, plants, *Dictyostelium discoideum*, *Cyanidioschyzon merolae*, *Cyanophora paradoxa* and *Trichomonas vaginalis*. Notably, lunapark was not found in the Stramenopiles and Alveolata. Lunapark antagonizes atlastin in the fusion of ER tubules and stabilizes nascent three-way junctions.^{37,60} Furthermore, a theoretical model has been proposed explaining ER morphologies and remodelling based on only two types of curvature-stabilizing proteins that generate straight or concave sheet edges, exemplified by the reticulons and lunapark, respectively.⁶¹ Therefore, in organisms lacking lunapark, either its function is performed by a non-homologous protein or some other mechanism exists to control the dynamics between ER tubules and sheets.

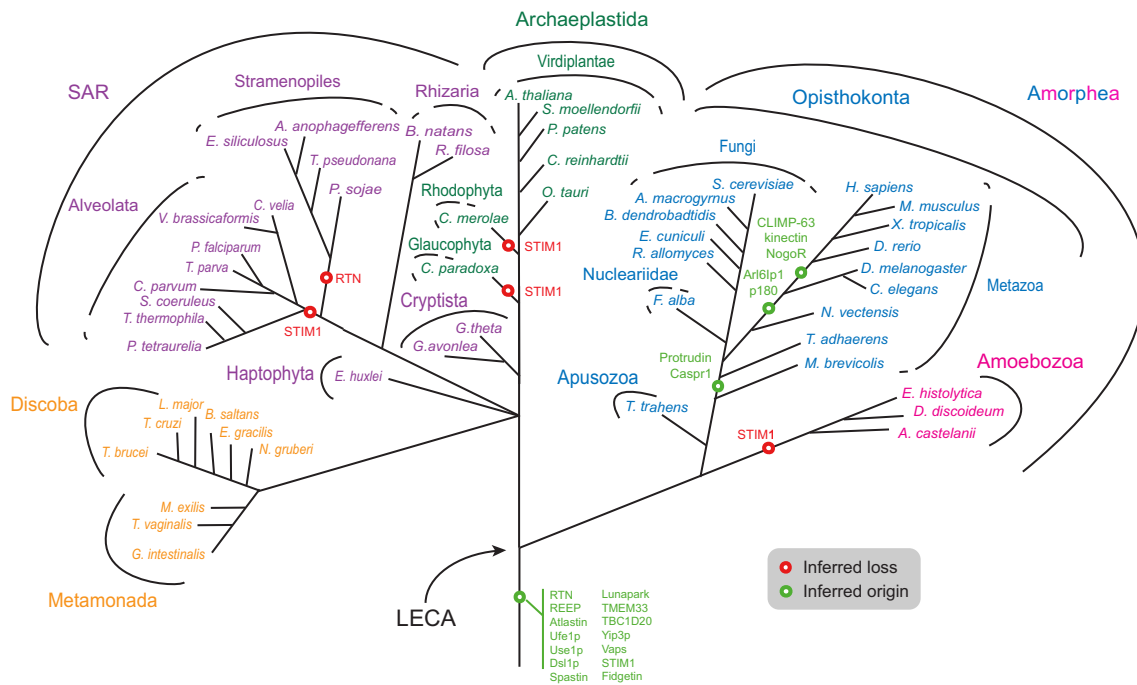


FIGURE 3 Distribution of ER morphology proteins mapped onto eukaryotic phylogeny. The most likely point of origin of each protein is indicated, based on the results of the present study. The tree omits much detail regarding losses of paralogs from specific taxa and ignores any potential lateral gene transfer. STIM1: most likely origin, but with multiple secondary losses (also see Figure 2). Sey1p, synthetic enhancer of Yop1p; LECA, last eukaryotic common ancestor; STIM1, stromal interaction molecule 1, other abbreviations as in Figure 1.

Protrudin and Arl6IP1 are also involved in formation of tubular ER and as both are only present in opisthokonts are thus lineage-specific. Protrudin emerged in the placozoa to regulate ER density and the ratio between tubules and sheets. Important for protrudin localization is interaction with VAP-A⁶²; VAP (vesicle-associated membrane protein-associated protein) also contributes to tethering between the ER and the plasma membrane. A second isoform, VAP-B, is found in mammals, mutants of which give rise to amyotrophic lateral sclerosis and induce ER restructuring.⁴⁴ VAP paralogs have many roles in intracellular trafficking and are localized to the Golgi, ER-Golgi intermediate compartment, tight junctions, neuromuscular junctions, recycling endosomes, and the plasma membrane.⁶² Unsurprisingly, therefore, VAPs are widely conserved (Figures 2 and 3), but while multiple lineage-specific expansions are present, VAP-A and VAP-B paralogs likely arose in vertebrates (Figure S2).

Arl6IP1 is present only in some metazoa, in concordance with previous studies, suggesting that Arl6IP1 participates in formation of the ER tubules only in this lineage.³³ Arl6IP1 recruits the inositol 5-phosphatase INPP5K (SKIP) to the ER and specifically to newly formed ER tubules that grow along microtubule tracks.⁶³ Therefore, this mechanism for recruitment of INPP5K is apparently specific to some metazoa and, significantly, absence from *Caenorhabditis elegans* indicates a distinct phosphoinositide signalling platform. Interestingly, Arl6IP1 also interacts with atlastin-1, is an antiapoptotic protein, is the conophylline receptor as well as the genetic determinant for HSP and pain insensitivity,^{33,64,65} which may well be linked with inositol phosphate signalling.

Spastin belongs to the diverse AAA-ATPase superfamily which share a common ATPase domain and spastin could not always be unequivocally determined from initial searches. In many cases the top BLAST hits were annotated as 'fidgetin', which is a spastin paralog. We carried out phylogenetic analysis for all spastin and fidgetin sequences in our species of interest, which showed that multiple species across all eukaryotic lineages have both spastin and fidgetin, suggesting an early origin for both (Figure S3). *Nematostella vectensis*, *S. cerevisiae*, *Vitrella brassicaformis* and *Euglena gracilis*, only have spastins, but a number of species outside the metazoa only have fidgetin, including *Encephalitozoon cuniculi*, *A. macrogynus*, *Entamoeba histolytica*, *Ostreococcus tauri*, *Cyanophora paradoxa*, *C. merolae*, *Thalassiosira pseudonana*, *Plasmodium falciparum*, *Theileria parva*, *Cryptosporidium parvum*, *Emiliania huxleyi*, *Bodo saltans* and *Leishmania major*; the rather patchy representation likely indicates multiple secondary losses of one or other paralog. However, none of the species studied has lost both paralogs, suggesting an important function. Because both proteins function as microtubule-severing enzymes,⁶⁶ and have only been marginally studied outside metazoa,⁶⁷ experimental work is needed to confirm the roles of spastin and fidgetin across the eukaryotes, and their potential contributions towards ER topology.

2.2 | ER junctions

Homotypic membrane fusion of neighbouring ER tubules is mediated by atlastin and Sey1p, which have very similar functions.⁶⁸

TABLE 1 List of proteins included in this study, categorized based on their functions relevant to Endoplasmic reticulum (ER) structure and/or other functions, where relevant.

Functions		Proteins	Origin
ER structure	Tubules	Reticulons	Ancient
		REEP5/Yop1p	Ancient
		REEP1	Unclear
		Spastin	Ancient
		Lunapark	Ancient
		Protrudin	Holozoa
	ER junctions	Arl6IP1	Metazoa
		Atlastin/Sey1p	Ancient
		Ufe1p-Use1p-Dsl1p	Ancient
	Sheets	Reticulons	Ancient
		CLIMP-63	Metazoa
		Kinectin	Metazoa
		p180	Metazoa
TMEM33		Ancient	
ER-microtubules		STIM1	Ancient
Endomembrane trafficking	Spastin	Ancient	
	CLIMP-63	Metazoa	
	REEP1	Unclear	
	Reticulons	Ancient	
	Spastin	Ancient	
	Ufe1p-Use1p-Dsl1p	Ancient	
	TBC1D20	Ancient	
Other functions	Yip3p	Ancient	
	VAPs	Ancient	
	NogoR	Metazoa	
	Caspr1	Holozoa	

Note: Some proteins (e.g. reticulons) have multiple functions and are listed more than once. In the last column, the most probable point of origin of each is indicated, based on the results of the present study.

Although the proteins have overall low sequence similarity, both belong to the dynamin family and possess a cytosolic N-terminal GTPase domain, followed by a helical bundle domain, which is significantly longer in Sey1p, two closely spaced *trans*-membrane segments and a cytosolic C-terminal tail, which includes an amphipathic helix.²⁷ Our analysis indicates that eukaryotes possess either an atlastin or a Sey1p ortholog, except for *Ectocarpus siliculosus* for which an ortholog for both can be identified (Table S3 and Figure S4). Atlastins are found in metazoa, stramenopiles, *Bigelowiella natans* and *Euglena gracilis*, whereas Sey1p is present in all other organisms. Previous analyses^{25,38} suggested a model in which ancestral Sey1p mediated homotypic membrane fusion in the LECA with atlastin emerging in the metazoa, but the fact that we see multiple examples of atlastin outside metazoa may instead indicate that both proteins were present in LECA, followed by multiple losses. The longer helical bundle of Sey1p-like proteins is important for dimerization⁶⁹; however, atlastins also dimerize^{27,68} so the longer helical bundle domain may also have another role, e.g. in spacing of ER junctions. Further analysis, including wider species sampling and other homologous proteins may help

clarify the origin of atlastin and Sey1p, as well as differences in their function.

Atlastin is likely the sole mediator of ER fusion in metazoa, as is the Sey1p-homolog RHD3 in plants. However, an alternative fusion pathway in *S. cerevisiae* is mediated by the ER SNAREs Ufe1p and Use1p in Sey1p-mutant cells, which also requires the tethering protein Dsl1p,^{27,38,39} although it is not known if this occurs in parallel with the Sey1p-mediated mechanism in wild type cells, or only compensates Sey1p mutants. Ufe1p, Use1p, and Dsl1p are widely distributed in eukaryotes (Figures 2 and 3, Table S4,^{70,71}), which is likely explained by their central role in retrograde vesicular transport.

2.3 | ER sheets

Reticulons, CLIMP-63, kinectin, p180 and TMEM33 are involved in formation of ER sheets. Reticulons locate to the edges of ER sheets generating high-membrane curvature²² and are highly conserved. CLIMP-63, kinectin and p180 are non-essential for ER sheet

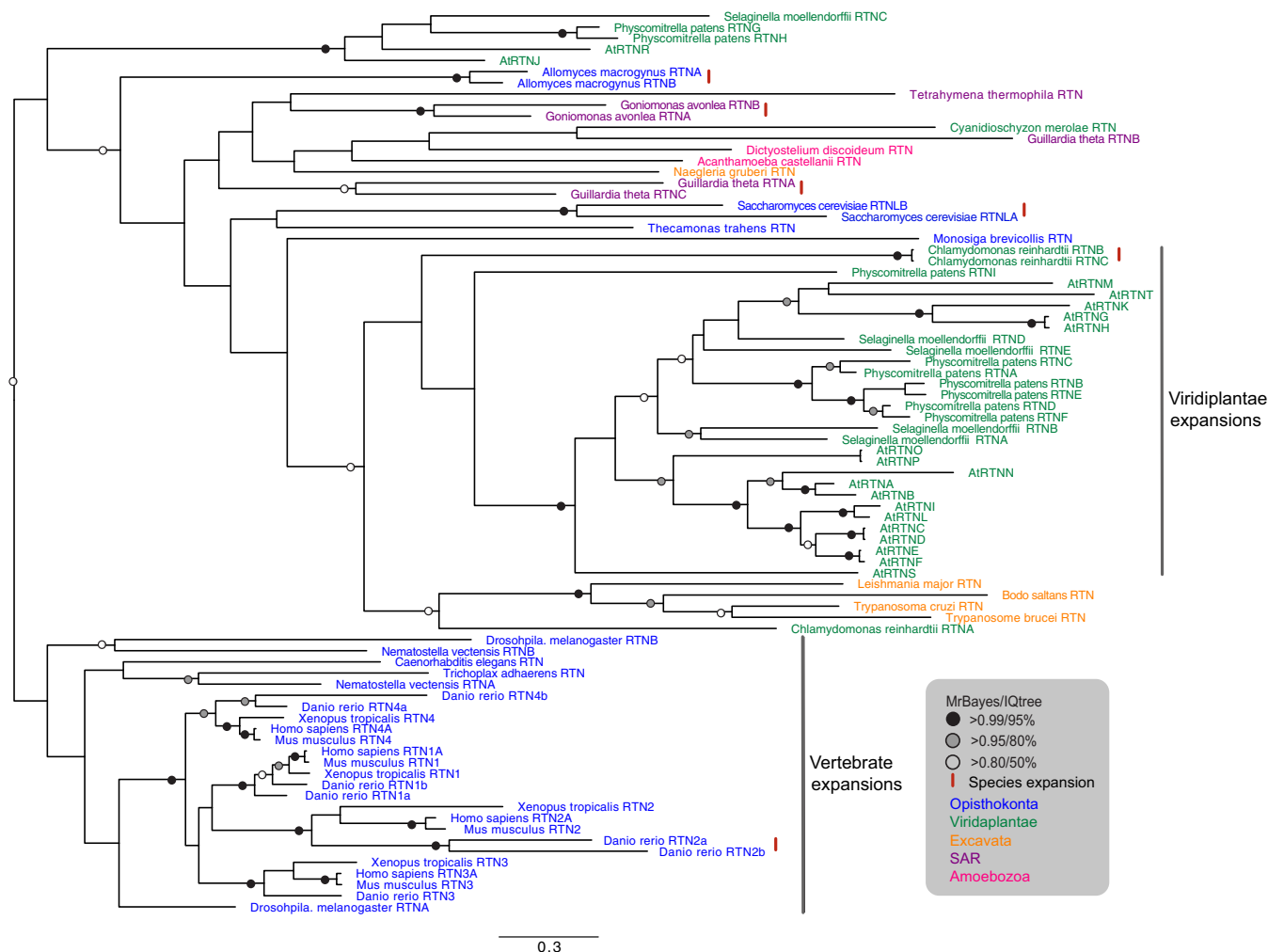


FIGURE 4 Phylogenetic reconstruction of the reticulons. The tree shown is based on MrBayes. Well-supported nodes in both the MrBayes and Maximum Likelihood (IQ) analyses are highlighted. The two major expansions in vertebrates and plants are also highlighted. The red lines 'I' indicate species-specific duplications. Species names are coloured as in Figure 3. At, *Arabidopsis thaliana*.

formation⁴⁰ and are present only in some metazoa (Figures 2 and 3). Our results indicate that CLIMP-63 and kinectin originated before the evolution of *D. rerio* and p180 before *D. melanogaster*. In contrast, orthologs of TMEM33 are found in at least some species of most lineages: opisthokonts, fungi, apusozoa, amoebozoa, plants, glaucophyta, rhodophyta, stramenopiles, alveolata, rhizaria and discoba (Figures 2 and 3). These results indicate an ancient role for reticulons outside metazoa in the formation of the ER sheets, most likely in stabilizing the edges,⁴⁰ and for TMEM33, which binds to reticulon homology domain-containing proteins and regulates their membrane-shaping activity.²² CLIMP-63, kinectin and p180 are coiled-coil domain proteins promoting sheet formation, further antagonizing the curvature-promoting action of reticulons; these proteins also associate with polysomes, characteristic of rough ER, and optimize the size of the luminal space of ER sheets,⁴⁰ while recent evidence suggests preferential interactions with different microtubule populations.⁷² One more metazoa-specific ER sheet-promoting protein, TMEM170A, was identified recently.⁷³

2.4 | ER-cytoskeleton interactions

ER tubules use at least two mechanisms to extend along microtubules, the TAC and ER-sliding dynamics. TAC functions are mediated by the integral ER membrane protein STIM1, which concentrates at the tip of ER tubules, and the microtubule end-binding protein 1 (EB1) which localizes to the tip of dynamic microtubules. STIM1 and EB1 interact with each other directly, allowing ER tubules to elongate or contract.^{29,74} STIM1 is conserved across metazoa, viridiplantae and stramenopiles (Figure 2). It is probable that STIM1 arose early in eukaryotic evolution but has been lost frequently, indicating that other proteins are needed for ER-cytoskeleton interactions. In mammalian cells, spastin, CLIMP-63, p180 and REEP1 all bind microtubules,^{28,40} but it is unknown if they function similarly to STIM1. Spastin and REEP1 interact with atlastin, an association that may aid ER tubules and cytoskeleton microtubules to form an organized network.²⁸

2.5 | Lineage-specific ER evolution

Multiple duplications were observed for many of the proteins considered here, including reticulons, REEP5/Yop1p, atlastin/Sey1p, Yip3p and VAPs, indicating species-specific and lineage-specific innovation. Furthermore, secondary losses are common in individual species, and even in certain lineages, for example the reticulons have most likely been lost from the stramenopiles; lunapark from the stramenopiles and alveolata; TMEM33 from the cryptista, haptophyta and metamonada, and STIM from the alveolata, excavata, glaucophyta, haptophyta, rhizaria and rhodophyta. To further check whole-lineage losses apparent in Figure 2, extra analyses were done using wider species sampling, the results of which are shown in Table S6. For example, REEP has been lost in the three amoebozoan species initially examined (*E. histolytica*, *D. discoideum*, *Acanthamoeba castellanii*) but further analysis showed that REEP homologs are present in certain other species of this lineage (*Dracoamoeba jomungandri*, *Filamoeba sp_ATCC50430*, *Vermamoeba vermiformis*, *Arcella intermedia*, *Amoeba proteus*).

If protein distribution is considered by organism, a number of interesting features emerge. The most dramatic is absence of several proteins involved in ER formation from a number of lineages. More specifically, atlastin/Sey1p, spastin and Yip3 were the only proteins recovered in *E. histolytica*, and atlastin/Sey1p, spastin, Use1p and TBC1D20 the only proteins recovered in *Monocercomonoides exilis* (Figure 2); notably, the GTPase substrates of TBC1D20, Rab1 and Rab2, are also conserved in *M. exilis* giving confidence for this result.⁷⁵ The apparent absence of ER shaping factors in certain lineages could be attributed to increased sequence divergence or genome data limitations, but multiple absences make this unlikely and these observations potentially indicate that mechanisms for ER formation are highly simplified or mediated by novel factors in those organisms. Indeed, the non-classical structure of the ER in *E. histolytica*^{76,77} and *M. exilis*^{75,78} could be attributed to the lack of reticulons and REEPs. A final significant feature is the presence of multiple paralogs (three REEPs, two atlastin/Sey1p proteins, three spastins/fidgetins, three Use1 proteins, three TMEM33, two TBC1D20 and seven VAPs) in *Paramecium tetraurelia* (Table S2). *P. tetraurelia* has nearly 40 000 genes, most of which arose through at least three successive whole-genome duplications, likely explaining these features.⁷⁹ The different paralogs may also play a role in remodelling the ER during different life stages in *Paramecium*.⁸⁰ [Correction added on 30 August 2022, after first online publication: The text “*Mammuthus exilis*” in the second paragraph of page 8 has been corrected to “*M. exilis*”.]

Animal-specific interactors of reticulons include NogoR and Caspr1. NogoR, the receptor for RTN4A (NogoA), is localized at the plasma membrane of neurons, and binding of RTN4A to NogoR can lead to inhibition of neuronal growth.³² This receptor appears to be present only in vertebrates: *H. sapiens*, *M. musculus*, *X. tropicalis*, *D. rerio* (Figure 2). This narrow distribution can be explained by the presence of a highly developed nervous system in these organisms. Caspr1 (contactin-associated protein) belongs to a family of transmembrane proteins participating in forming and stabilizing myelinated axons⁸¹ and interacts with RTN4A to mediate localization of

potassium channels in axonal paranodes.³² Metazoa and placozoa have at least one member of the Caspr protein family (Figures 2 and 3, Table S2), although for *D. melanogaster*, *C. elegans* and *Trichoplax adhaerens* it remains to be determined if these are true Caspr1 orthologs (Table S3). Notably, *T. adhaerens* lacks a typical nervous system with axons, synapses or muscles,⁸² so a Caspr protein in this organism would likely have a different function. Interestingly, Caspr is also conserved in gastropods (results not shown), which also have a highly developed nervous system, but which evolved along distinct lines and independently from the metazoan system.

3 | CONCLUSIONS

The endomembrane system comprises multiple organelles providing important functions specific to eukaryotic cells. Significantly, many of the ER proteins studied here are widely distributed across eukaryotes, pointing to an origin predating the LECA and diversification of eukaryotic supergroups. Apart from being fully consistent with a highly complex endomembrane system in the LECA, these observations unite the ER with other compartments in terms of an ancient origin.^{6,83,84} Reticulons/REEPs, spastin/fidgetin, atlastin/Sey1p, TMEM33 and STIM delineate a minimum set of ancient proteins for shaping major ER features, namely tubules, junctions, sheets and cytoskeletal interactions. Added to this are further elaborations in the opisthokonta (Protrudin, Arl6IP1, CLIMP-63, kinectin, p180, NogoR and Caspr1), and involvement of factors which have functions outside ER formation (Use1p, Ufe1p, Dsl1p, Vaps, TBC1D20 and Yip3). Secondary losses and lineage-specific duplications are common, with some evidence from metazoa and higher plants for differentiated functions between paralogs.

Several central components of the ER have clear antecedents in the Archaea. Use of dolichol-pyrophosphate as a lipid-linked oligosaccharide donor in Archaea is in common with eukaryotes as opposed to dolichol phosphate as used by bacteria,⁸⁵ while the Archaeal universal signal recognition particle protein SRP54 is more closely related to eukaryotes than bacteria, and SRP19 is present in Archaea but not bacteria.⁸⁶ However, the ER protein translocase in Archaea is simpler than eukaryotes, and similarly some components of the ER quality control and glycosylation apparatus must post-date FECA. Evolution of the machinery required to build and maintain an internal fenestrated network of membranes together with protein folding and quality control mechanisms was therefore clearly complete by the time of LECA. Functional studies of the factors shaping the ER in organisms outside the opisthokonta would greatly enhance our understanding of the flexibility of this organelle across the eukaryotes.

4 | METHODS

4.1 | Databases

Data were collected from 50 species with high quality genome databases and selected to provide a wide sampling of the eukaryotic

super-groups,⁸⁷ including multiple representative taxa in each group. The choice of species was such as to facilitate detection of species-specific secondary losses versus absence from the group, to minimize detection failure because of species-specific sequence divergence and so that failure to retrieve a candidate ortholog could be ascribed to true absence or extreme divergence, but not database incompleteness. Details of databases used are given in Table S5. Predicted proteomes for most species were downloaded from the respective databases for local analysis.

4.2 | Taxonomic homology survey

Initial queries used *H. sapiens* and *S. cerevisiae* predicted proteins (Tables S2 and S3). Forward BLAST⁸⁸ searches were run using default settings and an *e*-value cut-off of 0.05. A relatively high *e*-value was selected to reduce the number of sequences falsely excluded because of sequence divergence. All recovered sequences were subjected to reverse BLAST against the original genome (i.e. *H. sapiens* or *S. cerevisiae*) and, in some cases, against the NCBI non-redundant database for confirmation of orthology. For yeast queries, reverse BLAST searches were run manually; for human protein queries, reverse BLAST searches were run automatically (with an *e*-value cut-off of 0.05) and further inspected manually. A candidate ortholog was considered if reverse BLAST recovered the original query or annotated orthologs from other species, within the top five hits. Additionally, both for initial candidate identification and for validation by reverse BLAST, rather than relying solely on *e*-values, sequences were analysed by alignment and parsed through the NCBI conserved domain database for the presence of significant sequence similarity throughout the protein length, conservation of overall protein length and domain architecture. In cases where the initial queries failed to recover a candidate ortholog, the following three strategies were used: Forward BLAST searches were repeated using query sequences (annotated, or retrieved in our analysis) from a taxon more closely related to the target genome (e.g. an *Arabidopsis* protein used as the query against *Chlamydomonas*), HMMer v3.1b1 (hmmer.org) was used with a template composed of the entire set of recovered proteins for a given query and with a cut-off significance parameter of 0.05, or yeast and/or human protein sequences were used as queries for tBLASTn against genomic contigs. Default tBLASTn settings were used, again with an *e*-value cut-off of 0.05. Results from these searches were evaluated for *e*-value, predicted protein length, conserved domains, and subjected to reverse BLAST against the original query genome. Furthermore, returned candidate sequences were aligned and subject to phylogenetic analysis to confirm both extensive sequence homology and monophyly. Failure to identify a significant hit with all these methods resulted in assignment of 'not found'. Detailed results from all searches are shown in Table S3. To further check whole-lineage losses apparent in Figure 2, as well as certain positive outliers (e.g. the *Tetrahymena thermophila* reticulon and the *D. discoideum* lunapark) extra BLAST searches were done using wider species sampling, the results of which are shown in Table S6. For these searches, all available species in the TCS database of the EukProt

server^{89,90} (<http://evocellbio.com/eukprot/>) for each lineage of interest were examined by BLAST, using as queries *H. sapiens* and *S. cerevisiae* predicted proteins with an *e*-value cut-off of 0.05, and all recovered sequences were subjected to reverse BLAST (with an *e*-value cut-off of 0.05) on the NCBI server against the *Homo sapiens*, *S. cerevisiae*, and the general RefSeq database for confirmation of orthology. Any novel hit identified by this method was also used as a query against the rest of the species of the lineage. Specifically, we used the EukProt server to search for (a) reticulons in the Alveolata, Metamonada, Rhizaria and Stramenopiles, (b) REEP in the Amoebozoa, (c) Lunapark in SAR and Discoba, (d) TMEM33 in Cryptista, Glaucophyta, Haptophyta, Metamonada, Rhizaria and Rhodophyta, and (e) STIM in the Alveolata, Amoebozoa, Cryptista, Excavata (Discoba and Metamonada), Glaucophyta, Haptophyta, Rhizaria and Rhodophyta.

4.3 | Alignments and phylogenetic reconstruction

Alignments (available in the Appendix S1) were created using MUSCLE⁹¹ and masked to retain only unambiguously homologous regions. Phylogenetic analysis was performed by two separate methods. To obtain the Bayesian tree topology and posterior probability values, MrBayes version 3.1.2 was used,⁹² with the LG model of sequence evolution⁹³ and a gamma distribution of four categories of rate. Analyses were run with four chains for 2×10^7 generations, removing all trees before a plateau established by graphical estimation and checked for convergence. All analyses had an average standard deviation of split frequencies less than 0.01 (indicating convergence), with the exception of the pan-eukaryotic REEP analysis (0.027) and VAP analysis (0.014). Maximum-likelihood (ML) analysis was performed using IQ-TREE v.1.6.10⁹⁴ on the CIPRES Science Gateway server.⁹⁵ IQ-TREE was run with ultrafast bootstrap approximation (UFBoot) to assess branch support.⁹⁶ Model testing was performed using the built-in ModelFinder program with the best model selected according to the BIC criterion, and 1000 pseudoreplicates were obtained until tree convergence reached the default convergence coefficient.⁹⁷ Trees were visualized in FigTree. Nodes with greater than 0.95 posterior probability and 80% bootstrap support were considered robust, and nodes with over 0.80 posterior probability and 50% bootstrap support are highlighted.

ACKNOWLEDGMENTS

Work in the Field laboratory is supported by the Wellcome Trust (204697/Z/16/Z to MCF). Work in the Dacks Lab is supported by Discovery Grants (RES0043758, RES0046091) from the Natural Sciences and Engineering Research Council of Canada to JBD.

PEER REVIEW

The peer review history for this article is available at <https://publons.com/publon/10.1111/tra.12863>.

ORCID

Emily K. Herman  <https://orcid.org/0000-0002-5327-0755>

Mark C. Field  <https://orcid.org/0000-0002-4866-2885>

Joel B. Dacks  <https://orcid.org/0000-0003-4520-5694>

V. Lila Koumandou  <https://orcid.org/0000-0002-0624-0190>

REFERENCES

- Alberts B, Johnson A, Lewis J, Raff M, Roberts K, Walter P. *Molecular Biology of the Cell*. 4th ed. New York: Garland Science; 2002. Available from: <https://www.ncbi.nlm.nih.gov/books/NBK21054/>
- Lee MCS, Miller EA, Goldberg J, Orci L, Schekman R. Bi-directional protein transport between the ER and Golgi. *Annu Rev Cell Dev Biol*. 2004;20:87-123.
- Gatica D, Lahiri VV, Klionsky DJ. Cargo recognition and degradation by selective autophagy. *Nat Cell Biol*. 2018;20:233-242.
- Bonifacino JS, Glick BS. The mechanisms of vesicle budding and fusion. *Cell*. 2004;116:153-166.
- Field MC, Dacks JB. First and last ancestors: reconstructing evolution of the endomembrane system with ESCRTs, vesicle coat proteins, and nuclear pore complexes. *Curr Opin Cell Biol*. 2009;21:4-13.
- Koumandou VL, Dacks JB, Coulson R, Field MC. Control systems for membrane fusion in the ancestral eukaryote; evolution of tethering complexes and SM proteins. *BMC Evol Biol*. 2007;17:1-17.
- Elias M, Brighthouse A, Gabernet-Castello C, Field MC, Dacks JB. Sculpting the endomembrane system in deep time: high resolution phylogenetics of Rab GTPases. *J Cell Sci*. 2012;125:2500-2508.
- Koumandou VL, Wickstead B, Ginger ML, Van Der Giezen M, Dacks JB, Field MC. Molecular paleontology and complexity in the last eukaryotic common ancestor. *Crit Rev Biochem Mol Biol*. 2013;48:373-396.
- Dacks JB, Field MC. Evolutionary origins and specialisation of membrane transport. *Curr Opin Cell Biol*. 2018;53:70-76.
- Zaremba-Niedzwiedzka K, Caceres EF, Saw JH, et al. Asgard archaea illuminate the origin of eukaryotic cellular complexity. *Nature*. 2017;541:353-358.
- Imachi H, Nobu MK, Nakahara N, et al. Isolation of an archaeon at the prokaryote-eukaryote interface. *Nature*. 2020;577:519-525.
- Dacks JB, Robinson MS. Outerwear through the ages: evolutionary cell biology of vesicle coats. *Curr Opin Cell Biol*. 2017;47:108-116.
- Roger AJ, Susko E, Leger MM. Evolution: reconstructing the timeline of eukaryogenesis. *Curr Biol*. 2021;31:R193-R196.
- López-García P, Moreira D. Open questions on the origin of eukaryotes. *Trends Ecol Evol*. 2015;30:697-708.
- Baum DA, Baum B. An inside-out origin for the eukaryotic cell. *BMC Biol*. 2014;12:1-22.
- Harris AJ, Goldman AD. The very early evolution of protein translocation across membranes. *PLoS Comput Biol*. 2021;17:1-30.
- Cao TB, Saier MH. The general protein secretory pathway: phylogenetic analyses leading to evolutionary conclusions. *Biochim Biophys Acta Biomembr*. 2003;1609:115-125.
- Gould SB, Garg SG, Martin WF. Bacterial vesicle secretion and the evolutionary origin of the eukaryotic endomembrane system. *Trends Microbiol*. 2016;24:525-534.
- McBride HM. Mitochondria and endomembrane origins. *Curr Biol*. 2018;28:R367-R372.
- Lombard J. The multiple evolutionary origins of the eukaryotic N-glycosylation pathway. *Biol Direct*. 2016;11:36.
- Voeltz GK, Prinz WA, Shibata Y, Rist JM, Rapoport TA. A class of membrane proteins shaping the tubular endoplasmic reticulum. *Cell*. 2006;124:573-586.
- Urade T, Yamamoto Y, Zhang X, Ku Y, Sakisaka T. Identification and characterization of TMEM33 as a reticulon-binding protein. *Kobe J Med Sci*. 2014;60:E57-E65.
- Barlowe C. Atlasin GTPases shape up ER networks. *Dev Cell*. 2009;17:157-158.
- Farhan H, Hauri HP. Membrane biogenesis: networking at the ER with Atlastin. *Curr Biol*. 2009;19:R906-R908.
- Hu J, Shibata Y, Zhu PP, et al. A class of dynamin-like GTPases involved in the generation of the tubular ER network. *Cell*. 2009;138:549-561.
- Orso G, Pendin D, Liu S, et al. Homotypic fusion of ER membranes requires the dynamin-like GTPase Atlastin. *Nature*. 2009;460:978-983.
- Hu J, Rapoport TA. Fusion of the endoplasmic reticulum by membrane-bound GTPases. *Semin Cell Dev Biol*. 2016;60:105-111.
- Park SH, Zhu P-P, Parker RL, Blackstone C. Hereditary spastic paraplegia proteins REEP1, spastin, and atlastin-1 coordinate microtubule interactions with the tubular ER network. *J Clin Invest*. 2010;120:1097-1110.
- Friedman JR, Voeltz GK. The ER in 3D: a multifunctional dynamic membrane network. *Trends Cell Biol*. 2011;21:709-717.
- Chiurchiù V, Maccarrone M, Orlandi A. The role of reticulons in neurodegenerative diseases. *Neuromolecular Med*. 2014;16:3-15.
- Oertle T, Schwab ME. Nogo and its pARTners. *Trends Cell Biol*. 2003;13:187-194.
- Yang YS, Strittmatter SM. The reticulons: a family of proteins with diverse functions. *Genome Biol*. 2007;8:234.
- Yamamoto Y, Yoshida A, Miyazaki N, Iwasaki K, Sakisaka T. Arl6IP1 has the ability to shape the mammalian ER membrane in a reticulon-like fashion. *Biochem J*. 2014;458:69-79.
- Mannan AU, Boehm J, Sauter SM, et al. Spastin, the most commonly mutated protein in hereditary spastic paraplegia interacts with Reticulon 1 an endoplasmic reticulum protein. *Neurogenetics*. 2006;7:93-103.
- Solowska JM, Baas PW. Hereditary spastic paraplegia SPG4: what is known and not known about the disease. *Brain*. 2015;138:2471-2484.
- Chang J, Lee S, Blackstone C. Protrudin binds atlastins and endoplasmic reticulum-shaping proteins and regulates network formation. *Proc Natl Acad Sci U S A*. 2013;110:14954-14959.
- Chen S, Novick P, Ferro-Novick S. ER network formation requires a balance of the dynamin-like GTPase Sey1p and the Lunapark family member Lnp1p. *Nat Cell Biol*. 2012;14:707-716.
- Anwar K, Klemm RW, Condon A, et al. The dynamin-like GTPase Sey1p mediates homotypic ER fusion in *S. cerevisiae*. *J Cell Biol*. 2012;197:209-217.
- Rogers JV, McMahon C, Baryshnikova A, Hughson FM, Rose MD. ER-associated retrograde SNAREs and the Dsl1 complex mediate an alternative, Sey1p-independent homotypic ER fusion pathway. *Mol Biol Cell*. 2014;25:3401-3412.
- Shibata Y, Shemesh T, Prinz WA, Palazzo AF, Kozlov MM, Rapoport TA. Mechanisms determining the morphology of the peripheral ER. *Cell*. 2010;143:774-788.
- Goyal U, Blackstone C. Untangling the web: mechanisms underlying ER network formation. *Biochim Biophys Acta Mol Cell Res*. 2013;1833:2492-2498.
- Geng J, Shin ME, Gilbert PM, Collins RN, Burd CG. *Saccharomyces cerevisiae* Rab-GDI displacement factor ortholog Yip3p forms distinct complexes with the Ypt1 Rab GTPase and the reticulon Rtn1p. *Eukaryot Cell*. 2005;4:1166-1174.
- Haas AK, Yoshimura S-i, Stephens DJ, Preisinger C, Fuchs E, Barr FA. Analysis of GTPase-activating proteins: Rab1 and Rab43 are key Rabs required to maintain a functional Golgi complex in human cells. *J Cell Sci*. 2007;120:2997-3010.
- Hashimoto Y, Shirane M, Matsuzaki F, Saita S, Ohnishi T, Nakayama KI. Protrudin regulates endoplasmic reticulum morphology and function associated with the pathogenesis of hereditary spastic paraplegia. *J Biol Chem*. 2014;289:12946-12961.
- Schmitt HD. Dsl1p/Zw10: common mechanisms behind tethering vesicles and microtubules. *Trends Cell Biol*. 2010;20:257-268.
- Rogers JV, Arlow T, Inkell ER, Koo TS, Rose MD. ER-associated SNAREs and Sey1p mediate nuclear fusion at two distinct steps during yeast mating. *Mol Biol Cell*. 2013;24:3896-3908.

47. Fournier AE, GrandPre T, Strittmatter SM. Identification of a receptor mediating Nogo-66 inhibition of axonal regeneration. *Nature*. 2001; 409:341-346.
48. Nie DY, Zhou ZH, Ang BT, et al. Nogo-A at CNS paranodes is a ligand of Caspr: possible regulation of K⁺-channel localization. *EMBO J*. 2003;22:5666-5678.
49. Martin WF, Tielens AGM, Mentel M, Garg SG, Gould SB. The physiology of phagocytosis in the context of mitochondrial origin. *Microbiol Mol Biol Rev*. 2017;81:e00008-e00017.
50. Oertle T, Klinger M, Stuermer CAO, Schwab ME. A reticular rhapsody: phylogenetic evolution and nomenclature of the RTN/Nogo gene family. *FASEB J*. 2003;17:1238-1247.
51. Barlow LD, Dacks JB. Seeing the endomembrane system for the trees: evolutionary analysis highlights the importance of plants as models for eukaryotic membrane-trafficking. *Semin Cell Dev Biol*. 2018;80:142-152. [10.1016/j.semcdb.2017.09.027](https://doi.org/10.1016/j.semcdb.2017.09.027)
52. Panchy N, Lehti-Shiu M, Shiu SH. Evolution of gene duplication in plants. *Plant Physiol*. 2016;171:2294-2316.
53. Li Z, Baniaga AE, Sessa EB, et al. Early genome duplications in conifers and other seed plants. *Sci Adv*. 2015;1:e1501084.20.
54. Jiao Y, Li J, Tang H, Paterson AH. Integrated syntenic and phylogenomic analyses reveal an ancient genome duplication in monocots. *Plant Cell*. 2014;26:2792-2802.
55. Kriechbaumer V, Maneta-Peyret L, Fouillen L, et al. The odd one out: Arabidopsis reticulon 20 does not bend ER membranes but has a role in lipid regulation. *Sci Rep*. 2018;8:1-15.
56. Brooks RL, Mistry CS, Dixon AM. Curvature sensing amphipathic helix in the C-terminus of RTNLB13 is conserved in all endoplasmic reticulum shaping reticulons in *Arabidopsis thaliana*. *Sci Rep*. 2021;11:1-11.
57. Huber AB, Weinmann O, Brösamle C, Oertle T, Schwab ME. Patterns of Nogo mRNA and protein expression in the developing and adult rat and after CNS lesion. *J Neurosci*. 2002;22:3553-3567.
58. Wakefield S, Tear G. The Drosophila reticulon, Rtnl-1, has multiple differentially expressed isoforms that are associated with a sub-compartment of the endoplasmic reticulum. *Cell Mol Life Sci*. 2006;63:2027-2038.
59. Hurt CM, Björk S, Ho VK, Gilsbach R, Hein L, Angelotti T. REEP1 and REEP2 proteins are preferentially expressed in neuronal and neuronal-like exocytotic tissues. *Brain Res*. 2014;1545:12-22.
60. Chen S, Desai T, McNew JA, Gerard P, Novick PJ, Ferro-Novick S. Lunapark stabilizes nascent three-way junctions in the endoplasmic reticulum. *Proc Natl Acad Sci U S A*. 2015;112:418-423.
61. Shemesh T, Klemm RW, Romano FB, et al. A model for the generation and interconversion of ER morphologies. *Proc Natl Acad Sci U S A*. 2014;111:E5243-E5251.
62. Saita S, Shirane M, Natume T, Iemura SI, Nakayama KI. Promotion of neurite extension by protrudin requires its interaction with vesicle-associated membrane protein-associated protein. *J Biol Chem*. 2009; 284:13766-13777.
63. Dong R, Zhu T, Benedetti L, et al. The inositol 5-phosphatase INPP5K participates in the fine control of ER organization. *J Cell Biol*. 2018; 217:3577-3592.
64. Kuroda M, Funasaki S, Saitoh T, et al. Determination of topological structure of ARL6ip1 in cells: identification of the essential binding region of ARL6ip1 for conophylline. *FEBS Lett*. 2013;587:3656-3660.
65. Nizon M, Küry S, Péréon Y, et al. ARL6IP1 mutation causes congenital insensitivity to pain, acromutilation and spastic paraplegia. *Clin Genet*. 2018;93:169-172.
66. Kuo YW, Howard J. Cutting, amplifying, and aligning microtubules with severing enzymes. *Trends Cell Biol*. 2021;31:50-61.
67. Song G, Kwon CT, Kim SH, et al. The rice SPOTTED LEAF4 (SPL4) encodes a plant spastin that inhibits ROS accumulation in LEAF development and functions in LEAF senescence. *Front Plant Sci*. 2019;9:1-14.
68. Yan L, Sun S, Wang W, et al. Structures of the yeast dynamin-like GTPase Sey1p provide insight into homotypic ER fusion. *J Cell Biol*. 2015;210:961-972.
69. Sun J, Zheng H. Efficient ER fusion requires a dimerization and a C-terminal tail mediated membrane anchoring of RHD3. *Plant Physiol*. 2018;176:406-417.
70. Venkatesh D, Boehm C, Barlow LD, et al. Evolution of the endomembrane systems of trypanosomatids—conservation and specialisation. *J Cell Sci*. 2017;130:1421-1434.
71. Klinger CM, Klute MJ, Dacks JB. Comparative genomic analysis of multi-subunit tethering complexes demonstrates an ancient pan-eukaryotic complement and sculpting in Apicomplexa. *PLoS One*. 2013;8:1-15.
72. Zheng P, Obara CJ, Szczesna E, et al. ER proteins decipher the tubulin code to regulate organelle distribution. *Nature*. 2021;601:132-138. Available from: <http://www.ncbi.nlm.nih.gov/pubmed/34912111>
73. Christodoulou A, Santarella-Mellwig R, Santama N, Mattaj IW. Transmembrane protein TMEM170A is a newly discovered regulator of ER and nuclear envelope morphogenesis in human cells. *J Cell Sci*. 2016; 129:1552-1565. doi:[10.1242/jcs.175273](https://doi.org/10.1242/jcs.175273)
74. English AR, Zurek N, Voeltz GK. Peripheral ER structure and function. *Curr Opin Cell Biol*. 2009;21:596-602.
75. Karnkowska A, Treitli SC, Brzoń O, et al. The oxymonad genome displays canonical eukaryotic complexity in the absence of a mitochondrion. *Mol Biol Evol*. 2019;36:2292-2312.
76. Teixeira JE, Huston CD. Evidence of a continuous endoplasmic reticulum in the protozoan parasite *Entamoeba histolytica*. *Eukaryot Cell*. 2008;7:1222-1226.
77. Perdomo D, Aït-Ammar N, Syan S, Sachse M, Jhingan GD, Guillén N. Cellular and proteomics analysis of the endomembrane system from the unicellular *Entamoeba histolytica*. *J Proteomics*. 2015;112: 125-140.
78. Treitli SC, Kotyk M, Yubuki N, et al. Molecular and morphological diversity of the oxymonad genera monocercomonoides and *Blattamonas* gen. nov. *Protist*. 2018;169:744-783.
79. Aury J-M, Jaillon O, Duret L, et al. Global trends of whole-genome duplications revealed by the ciliate *Paramecium tetraurelia*. *Nature*. 2006;444:171-178.
80. Ramoino P, Diaspro A, Fato M, Beltrame F, Robello M. Changes in the endoplasmic reticulum structure of *Paramecium primaurelia* in relation to different cellular physiological states. *J Photochem Photobiol B Biol*. 2000;54:35-42.
81. Zou Y, Zhang W, Liu H, et al. Structure and function of the contactin-associated protein family in myelinated axons and their relationship with nerve diseases. *Neural Regen Res*. 2017;12:1551.
82. Jorgensen EM. Animal evolution: looking for the first nervous system. *Curr Biol*. 2014;24:655-658.
83. Dacks JB, Field MC. *Eukaryotic Cell Evolution from a Comparative Genomic Perspective: The Endomembrane System*. CRC Press; 2004: 309-334.
84. Field MC, Gabernet-castello C, Dacks JB. Reconstructing the evolution of the endocytic system: insights from genomics and molecular cell biology. In: Jekely G, ed. *Eukaryotic Membranes and Cytoskeleton. Advances in Experimental Medicine and Biology*. Springer; 2007:84-96.
85. Eichler J. N-Glycosylation in Archaea—new roles for an ancient post-translational modification. *Mol Microbiol*. 2020;114:735-741.
86. Albers SV, Szabó Z, Driessen AJM. Protein secretion in the Archaea: multiple paths towards a unique cell surface. *Nat Rev Microbiol*. 2006; 4:537-547.
87. Adl SM, Simpson AGB, Farmer MA, et al. The new higher level classification of eukaryotes with emphasis on the taxonomy of protists. *J Eukaryot Microbiol*. 2005;52:399-451.
88. Altschul S, Madden T, Schaffer A, et al. Gapped blast and psi-blast: a new generation of protein database search programs. *Nucleic Acids Res*. 1997;25:3389-3402.

89. Richter D, Berney C, Strasser J, et al. EukProt: a database of genome-scale predicted proteins across the diversity of eukaryotes. *bioRxiv*. 2022. [10.1101/2020.06.30.180687](https://doi.org/10.1101/2020.06.30.180687)
90. Priyam A, Woodcroft BJ, Rai V, et al. Sequenceserver: a modern graphical user interface for custom BLAST databases. *Mol Biol Evol*. 2019;36:2922-2924.
91. Edgar RC. MUSCLE: multiple sequence alignment with high accuracy and high throughput. *Nucleic Acids Res*. 2004;32:1792-1797.
92. Ronquist F, Huelsenbeck JP. MrBayes 3: Bayesian phylogenetic inference under mixed models. *Bioinformatics*. 2003;19:1572-1574.
93. Le SQ, Gascuel O. An improved general amino acid replacement matrix. *Mol Biol Evol*. 2008;25:1307-1320.
94. Nguyen L-T, Schmidt HA, von Haeseler A, Minh BQ. IQ-TREE: a fast and effective stochastic algorithm for estimating maximum-likelihood phylogenies. *Mol Biol Evol*. 2015;32:268-274.
95. Miller MA, Pfeiffer W, Schwartz T. Creating the CIPRES science gateway for inference of large phylogenetic trees. *2010 Gateway Computing Environments Workshop (GCE)*. IEEE; 2010, pp. 1-8.
96. Minh BQ, Nguyen MAT, Von Haeseler A. Ultrafast approximation for phylogenetic bootstrap. *Mol Biol Evol*. 2013;30:1188-1195.
97. Kalyaanamoorthy S, Minh BQ, Wong TKF, Von Haeseler A, Jermin LS. ModelFinder: fast model selection for accurate phylogenetic estimates. *Nat Methods*. 2017;14:587-589.

SUPPORTING INFORMATION

Additional supporting information can be found online in the Supporting Information section at the end of this article.

How to cite this article: Kontou A, Herman EK, Field MC, Dacks JB, Koumandou VL. Evolution of factors shaping the endoplasmic reticulum. *Traffic*. 2022;23(9):462-473. doi:[10.1111/tra.12863](https://doi.org/10.1111/tra.12863)