

## CLINICAL REVIEW

# Improvement in Lung Cancer Outcomes With Targeted Therapies: An Update for Family Physicians

*Christian Rolfo, MD, PhD, Francesco Passiglia, MD, Marcin Ostrowski, MD, Lúcia Farracho, Tereza Ondřejichová, Ana Dolcan, Marta Castiglia, BSc, Roy Remmen, MD, PhD, Konstantinos Papadimitriou, MD, and Patrick Pauwels, MD, PhD*

**In the past decade the advent of target therapy has led to a silent revolution in the treatment of lung cancer. Thanks to the specificity of their target, new tailored drugs are able to achieve a larger benefit and lower toxicity and provide better quality of life than cytotoxic drugs in a limited number of patients, selected by molecular profile. Nowadays, the epidermal growth factor receptor tyrosine kinase inhibitors erlotinib and gefitinib, and the anaplastic lymphoma kinase inhibitor crizotinib, are targeted agents approved for treatment of non-small-cell lung cancer. Family physicians play an important role in the treatment, detection, and management of common toxicities and in providing emotional support. Therefore this review integrates molecular profile assessment with evidence of the efficacy and toxicity of tyrosine kinase inhibitors to provide an updated overview of the treatment of non-small-cell lung cancer, which radically changed after the advent of targeted therapies. It also aims to promote a more intensive and interactive collaboration between specialists and family physicians in the management of all phases of cancer care. (J Am Board Fam Med 2015;28:124–133.)**

**Keywords:** Cancer, Drug Therapy, Lung Cancer, Medical Oncology, Non-Small-Cell Lung Cancer, Tyrosine Kinase

The past decade has witnessed a silent revolution in the war against cancer, thanks to the advent of new therapies, which target specific mutations related to cancer cell proliferation and survival in different types of tumors. Among all cancers, lung cancer remains the leading cause of cancer-related death in most countries, with 159,260 expected deaths in

the United States in 2014. Lung cancer occurs predominately in people between 50 and 70 years old, but the risk of developing this cancer reaches a peak in people older than 70 years. Lung cancer incidence decreased in the past two decades in several countries, including the United States, following a decreased rate of smoking. At the same time, the incidence among women, including former or never smokers, is rapidly increasing.<sup>1</sup> The discovery of “oncogenic driver mutations” and the subsequent development of tailored agents has radically changed the treatment of lung cancer in ten years, leading to the development of personalized strategies.<sup>2,3</sup> Non-small-cell lung cancer (NSCLC) was traditionally classified, based on histologic features, as adenocarcinoma, squamous cell carcinoma, and other nonspecified subtypes, which represent about 55%, 35%, and 10% of all NSCLC cases, respectively. In the early 1990s treatment approaches available for patients with lung cancer were poor, with a median survival of 2 to 4

This article was externally peer reviewed.

Submitted 26 February 2014; revised 7 September 2014; accepted 25 September 2014.

From the Phase I Early Clinical Trials Unit, Department of Oncology, Antwerp University Hospital, Edegem, Belgium (CR, FP, KP); European Cancer Organisation, Antwerp University Hospital, Edegem, Belgium (MO, LF, TO, AD); Molecular Pathology Unit, Department of Pathology, Antwerp University Hospital, Edegem, Belgium (MC, PP); and the Faculty of Medicine and Health Sciences, Antwerp University Hospital, Edegem, Belgium (RR).

Funding: none.

Conflict of interest: none declared.

Corresponding author: Christian Rolfo, MD, PhD, Phase I Early Clinical Trials Unit, Department of Oncology, Antwerp University Hospital, Edegem, Belgium, UZA, Wilrijkstraat 10, 2650 Edegem, Belgium (E-mail: christian.rolfo@uza.be).

months.<sup>4</sup> The introduction of platinum-based combinations with third-generation agents such as gemcitabine, vinorelbine, and docetaxel significantly improved survival outcomes, which led to a “plateau” of about 10 to 11 months’ median survival; nowadays these combinations are still considered the standard of care for the majority of patients with NSCLC.<sup>5</sup> Subsequently, significant advances have been made with the introduction of new, more specific cytotoxic drugs, such as pemetrexed, with improved efficacy, especially against the non-squamous cell carcinoma subtype. The addition of this agent led to a further improvement in survival to 12 to 13 months<sup>6</sup> and up to 14 months with the introduction of maintenance treatment.<sup>7</sup> Furthermore, the discovery of key oncogene alterations contributed to the gradual shift of NSCLC classification from a histologic- to molecular-based profile. In fact, even when the histologic subtype is a factor when selecting among different chemotherapies, the tumor molecular features are now crucial for the selection of patients to receive new tailored agents. The first example is the discovery of specific epidermal growth factor receptor (EGFR) mutations and ALK gene rearrangements in a subset of patients with NSCLC, leading to the development of the EGFR tyrosine kinase inhibitors (TKIs) erlotinib, gefitinib, and afatinib and the ALK inhibitors crizotinib and ceritinib, which currently are the only targeted drugs approved for the treatment of NSCLC.<sup>8</sup> New driver mutations were recently identified in both adenocarcinoma and squamous cell carcinoma, and several ongoing trials are investigating the activity of new potential target agents. The introduction of new tailored approaches in clinical practice changed the lung cancer treatment strategy; new emerging toxicities require active involvement and collaboration of family physicians in all phases of care. Family physicians, with their ongoing relationships with patients and the patient’s family and caregivers, has an important role in the treatment, detection, and management of common toxicities and in providing emotional support. Family physicians are also well positioned to identify and address unmet nonmedical and medical needs that have such a crucial influence on quality of life, playing a key role in mediating the relationship between the medical oncologist and the patient. Therefore we believe that family physicians should be up to date with these radical changes in clinical oncology, especially

with regard to the treatment of common malignancies such as NSCLC (Figures 1 and 2).

## **EGFR Pathway and EGFR Inhibitors**

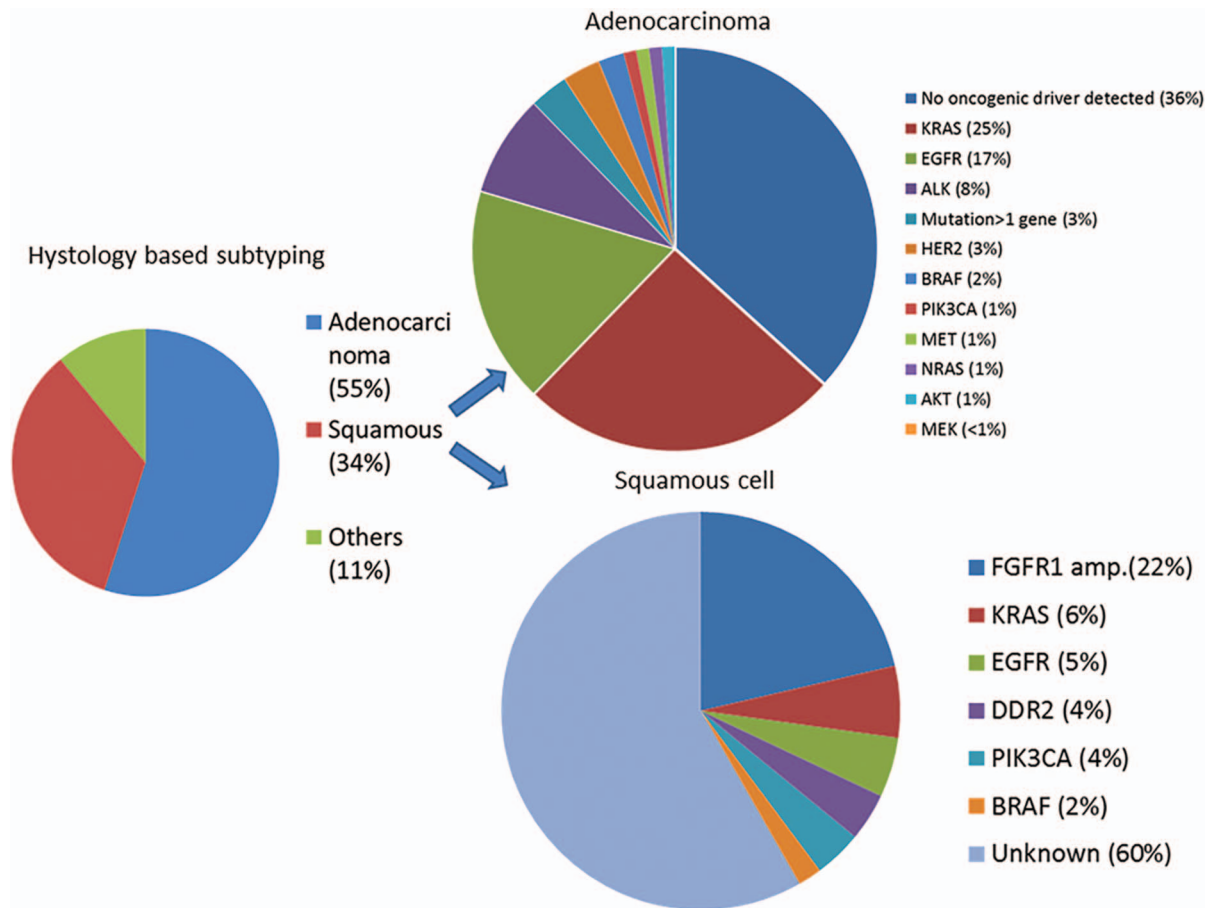
### ***EGFR Mutations***

EGFR-activating mutations are the most frequent driver mutations in NSCLC, reported in about 40% to 60% of Asian,<sup>9–11</sup> 15% to 20% of white,<sup>12,13</sup> and about 30% of Latin-American<sup>14</sup> patients with NSCLC; they are very important as clinical predictors of EGFR TKI sensitivity and efficacy.<sup>15</sup> The most frequent mutations are exon19 deletions (>20 variant types) and a mutation at codon 858 in exon21 (L858R), accounting for 90% of overall EGFR mutations.<sup>16</sup> Several in vitro studies demonstrated that these mutations increased EGFR activity and were responsible for cancer cell proliferation and survival, also leading to angiogenesis, tumor invasion, and metastatic potential. Following molecular interaction with the receptor, small-molecule TKIs specifically inhibit EGFR and are capable of inactivating the downstream aberrant signaling pathways.

### ***EGFR TKIs***

EGFR TKIs represent the mainstream in targeted therapy in NSCLC, leading to improvements in the median survival rates and quality of life for patients with tumors harboring EGFR-activating mutations. Gefitinib is available as film-coated tablets that contain 250 mg of the active compound, taken once a day. Erlotinib is available in 3 dose-strength tablets: 25, 100, and 150 mg; the recommended dose is 150 mg once a day. Both of these drugs are recommended as first-line treatment for patients whose tumors harbor EGFR-activating mutations, but erlotinib was also approved as a second-/third-line treatment for patients with unknown EGFR mutational status.<sup>17</sup> Several randomized studies included in a recent meta-analysis, however, showed that erlotinib and gefitinib have lower efficacy than standard chemotherapy in pretreated patients with EGFR wild-type tumors<sup>18</sup>, suggesting that the EGFR mutation is a predictive biomarker for EGFR TKI efficacy in a second-line setting. Both drugs should be taken 1 hour before or 2 hours after lunch, whereas only erlotinib-treated patients should avoid drinking grapefruit juice, reduce or stop smoking, and avoid taking proton pump inhibitors 4 hours before or 2 hours

**Figure 1. Molecular subsets of lung cancer.**

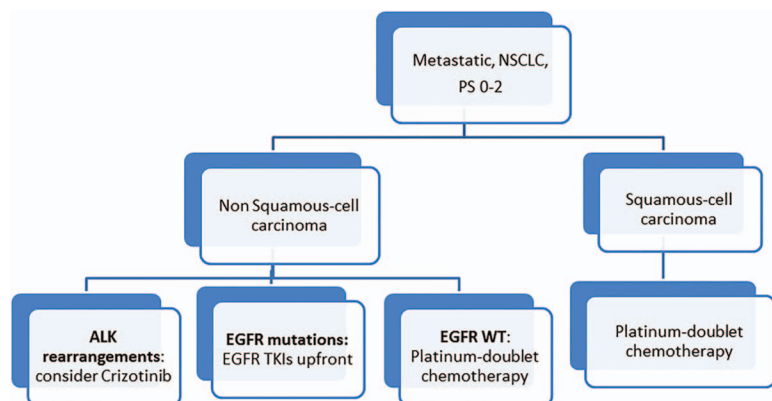


after the TKI's uptake to avoid drug's interactions. Afatinib, another TKI, has been recently approved by the US Food and Drug Administration (FDA) and European Medical Agency as a first-line treatment of NSCLC in patients whose tumors harbor

EGFR-activating mutations, at a dose of 40 mg once daily.

At least 8 different clinical trials comparing front-line EGFR TKI treatment with standard platinum chemotherapy in patients with EGFR-

**Figure 2. Treatment algorithm in first-line metastatic non-small-cell lung cancer (NSCLC). EGFR, epidermal growth factor receptor; PS, performance status; TKI, tyrosine kinase inhibitor; WT, wild-type.**



mutated NSCLC have shown that targeted treatment is better than standard chemotherapy in this selected patient population, leading to a significant improvement in survival, which reached a plateau of 24 to 30 months<sup>11,15,19–24</sup> (Table 1). Such findings suggest that testing tumors for specific activating mutations, and tailoring the therapeutic approach, may optimize patients' survival outcomes. Several studies showed a higher occurrence of EGFR-activating mutations in a subgroup of patients with NSCLC reporting some clinical features, such as “women, nonsmokers, Asian race and especially adenocarcinoma subtype,” which could be considered as clinical predictive factors for TKI sensitivity. Otherwise, a significant percentage of patients without the aforementioned clinical features also was positive for EGFR-activating mutations.<sup>25</sup> Based on these findings, the American Society of Clinical Oncology recommends EGFR mutation testing before treatment with EGFR TKIs in the management of all patients with advanced lung cancer.<sup>26</sup> While most patients with EGFR-mutated NSCLC present good initial responses to treatment with gefitinib or erlotinib, they invariably develop resistance to EGFR TKIs,<sup>25</sup> translating into clinical disease progression usually after 10 to 12 months of treatment. In clinical practice this often interrupts the current targeted treatment and requires a switch to a standard platinum-doublet chemotherapy. In the past year, however, an improved understanding of the mechanisms of underlying resistance to EGFR TKIs emphasizes the importance of a genotype-guided approach to therapy. Several cell-based studies identified a second EGFR gene mutation,

T790M, as the leading cause of acquired resistance to first-generation EGFR TKIs in about 50% of patients.<sup>27</sup> This observation guided the development of a new generation of irreversible EGFR inhibitors, including CO1686 and AZD9291, capable of specifically targeting and inactivating the T790M mutation.<sup>28,29</sup> Another significant group of cancers (approximately 20%) acquire resistance to EGFR TKIs following the amplification of the mesenchymal–epithelial transition (MET) factor receptor tyrosine kinase, which activates different EGFR signaling pathways.<sup>30</sup> Other resistance-related processes include Her-2 amplification (12%), phenotypic change from NSCLC to small-cell lung carcinoma (4%), and modifications in other parallel signaling pathways.<sup>31</sup> Several ongoing studies will contribute to an improved understanding of the molecular basis of acquired resistance, and new therapeutic approaches will improve the efficacy of anticancer regimens in NSCLC.

## ALK Translocation and ALK Inhibitors

### *EML-ALK Chromosome Rearrangement*

In 2007 Soda and colleagues<sup>32</sup> discovered another driver mutation in NSCLC: the *EML4-ALK* fusion gene, which is the consequence of a chromosomal rearrangement, resulting in a fusion between the N-terminal portion of the EML4 protein and the intracellular region of the receptor ALK. *EML4-ALK* fusion leads to a ligand-independent, constitutive activation of the rearranged ALK receptor, which is responsible for both tumor cell proliferation and survival. ALK translocation occurs in about 3% to 7% of patients with NSCLC<sup>33</sup> and is

**Table 1. Randomized Studies Comparing Epidermal Growth Factor Receptor Tyrosine Kinase Inhibitors and Chemotherapy in First-Line Treatment of Non-Small-Cell Lung Cancer**

Study	TKI	EGFR mutations (n)	ORR (TKI vs CT) (%)	Median PFS (TKI vs CT) (months)	OS (TKI vs CT) (months/HR)
First-Signal	Gefitinib	27	84 vs 37	8.4 vs 6.7	30.6 vs 26.5
IPASS	Gefitinib	132	71 vs 47	9.8 vs 6.4	21.6 vs 21.9
NEJGSG002	Gefitinib	228	74 vs 29	10.8 vs 5.4	27.7 vs 26.6
WJTOG3405	Gefitinib	172	62 vs 32	9.2 vs 6.3	NA
OPTIMAL	Erlotinib	154	83 vs 36	13.7 vs 4.6	NA
EURTACC	Erlotinib	173	58 vs 15	9.7 vs 5.2	NA
Lux-Lung 3	Afatinib	308	56 vs 23	13.6 vs 6.9	HR: 1.12
Lux-Lung 6	Afatinib	364	67 vs 23	11 vs 5.6	HR: 0.95

CT, chemotherapy; EGFR, epidermal growth factor receptor; HR, hazard ratio; NA, not available; ORR, objective response rate; OS, overall survival; PFS, progression-free survival; TKI, tyrosine kinase inhibitor.



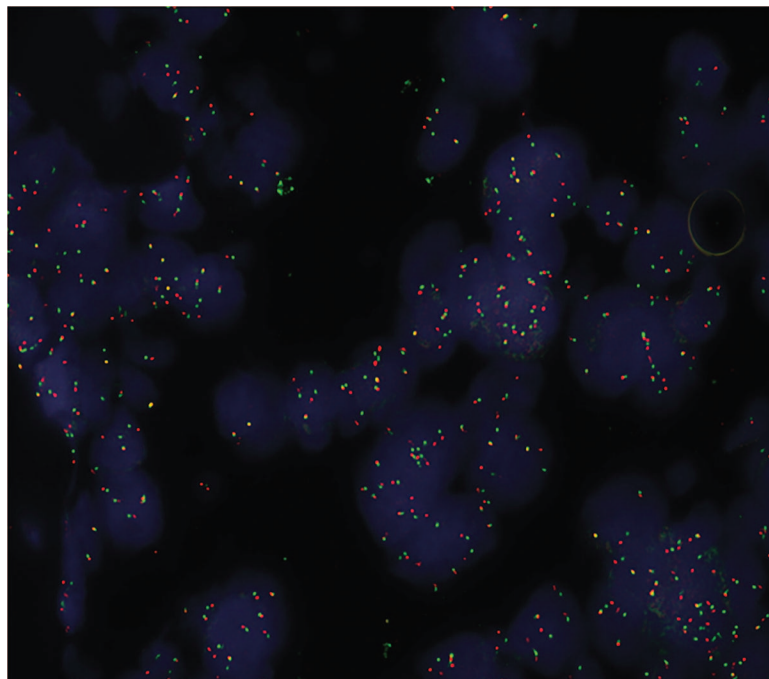
not mutually exclusive with *EGFR* and *KRAS* gene mutations. Data obtained from different studies show that it is more frequent in Eastern Asian patients, those with adenocarcinomas histotypes, light or never smokers, women, and younger patients. However, it was also reported in patients with squamous or adenosquamous carcinomas and in smokers, albeit at a much lower rate.<sup>33,34</sup> Furthermore, the ALK-positive tumor phenotype seems to be associated with worse survival and an increased risk of brain and liver metastases,<sup>35</sup> whereas it is resistant EGFR TKI therapy<sup>33,34</sup> and has higher sensitivity to the cytotoxic agent pemetrexed.<sup>36</sup> Immune fluorescence in situ hybridization is currently considered the standard test, approved for the detection of ALK -rearrangements in tumor samples (Figure 3).

#### ***EML-ALK Inhibitors***

Crizotinib is the first and actually the only available ALK inhibitor approved for treatment of ALK-positive patients with NSCLC, at doses of 250 mg twice daily (500 mg/day). It is a potent oral ATP competitor at the ATP-binding pocket of the ALK receptor, with additional anti-MET and anti-ROS1 activity. The approval and subsequent introduction of crizotinib in clinical practice was based on the

results of phase I and II trials which showed a surprising response rate as well as a progression-free survival rate in ALK-positive pretreated patients,<sup>37-39</sup> leading to an acceleration of the drug registration procedures, definitively approved by the FDA in October 2011. This is the first report in the history of oncology that a drug is approved based only on the phase I and II data. These results were subsequently confirmed by a phase III trial (PROFILE 1007), which showed a significant improvement of response and survival rates and also in terms of quality of life for pretreated patients with NSCLC.<sup>40</sup> Today, the drug is still recommended for the treatment of ALK-positive patients with NSCLC only when progressing after first-line chemotherapy,<sup>8</sup> but another randomized phase III trial, PROFILE 1014, investigated the efficacy of crizotinib in a first-line setting, showing a significant survival benefit in this selected subgroup of patients.<sup>41</sup> Unfortunately, because of the development of resistance, ALK-positive patients treated with crizotinib also relapse after a variable period of sensitivity; this may be related to a second mutation either in the ATP-binding pocket or the amplification of the ALK fusion gene. Other less frequent alterations include increased EGFR phosphorylation and mutation, Kit amplification

**Figure 3. ALK-positive fluorescence in situ hybridization image of a patient with non-small-cell lung cancer.**



and mutation, and *KRAS* mutation. Next-generation ALK inhibitors, developed to overcome crizotinib resistance, are under investigation in several early phase studies. One of these compounds, ceritinib, has shown great activity in a recent phase I study by Shaw et al,<sup>42</sup> receiving approval by the FDA for the treatment of ALK-rearranged patients with NSCLC who had progressed or were intolerant to crizotinib. Since these second-generation target drugs have variable efficacy against some specific mutations, molecular testing after progression is required to ensure the best tailored approach<sup>43</sup> (Table 2).

## Emerging Toxicities and Management

### *EGFR Inhibitors' Toxicity*

TKIs present a good tolerability profile, with a significantly lower incidence of side effects, such as myelosuppression, nausea, vomiting, fatigue, and neurotoxicity, when compared with chemotherapy. On the other hand, new adverse events, such as skin rash, diarrhea, and asymptomatic hypertransaminasemia, emerged as a specific result of silencing the EGFR pathway in healthy cells, whereas severe toxicities were less frequently reported.<sup>15,22,23</sup> Skin toxicity is the most common adverse effect associated with TKIs, reported in >80% of patients treated with these drugs. Although <20% of patients have severe symptoms,<sup>44</sup> skin toxicity is visible and often causes physical and emotional discomfort, resulting in a significant impact on quality of life.<sup>45</sup> Such toxicity is related to dose reductions in 60% of patients or discontinuation of treatment in 32%,<sup>46</sup> with subsequent poor clinical outcomes and an increase in management costs. Thus it is

essential for family physicians to be aware of these dermatologic side effects to ensure appropriate and early management. Skin rash is characterized by a monomorphic papulopustular eruption, often confined to seborrheic areas (midfacial region and the upper trunk), which consists of erythematous follicular papules that evolve into pustules and sometimes may become infected, usually with *Staphylococcus aureus*, forming yellow crusts.<sup>47</sup> The reactive treatment of skin rash depends on its severity. Differentiating low-grade toxicity (grade 2), characterized by eruption with papules or pustules covering <30% of the body surface without symptoms interfering with daily activities, from moderate to high-grade toxicity (grade 3), characterized by eruption with papules or pustules covering >30% of the body surface, with symptoms that interfere with daily activities, is important. In grade 2 toxicity, local treatment with an antibiotic (clindamycin 1% gel, erythromycin 3% gel, or metronidazole 1% gel) is recommended. In grade 3, in addition to the local treatment, systemic treatment with oral tetracyclines for 4 weeks and oral corticosteroids for 10 days is recommended. If no improvement occurs, discontinuation or interruption of treatment may be indicated. For nonresponsive and grade 4 toxicity, which is characterized by generalized rash or severe symptoms, systemic treatment with intravenous corticosteroids, antibiotics, and hydration—or even hospitalization for emergency treatment—may be considered.<sup>48,49</sup> Although the toxicity profile between different TKIs is comparable, it seems to be somewhat worse for afatinib than for erlotinib or gefitinib. Furthermore, data reported from several trials and a recent meta-

**Table 2. Clinical Trials with Crizotinib in ALK-positive Patients**

Study	Phase	Patients with NSCLC, AKT+ (n)	ORR (%)	PFS (months)	Author
PROFILE 1001	Phase I	149	60.8 (95% CI, 52.3–68.9)	9.7 (95% CI, 7.7–12.8)	Camidge 2012
PROFILE 1005	Phase II	261	60 (95% CI, 53.6–65.9)	8.1 (95% CI, 6.8–9.7)	Kim 2012
PROFILE 1007	Phase III (CZT vs pemetrexed/docetaxel)	346	65 vs. 19.5*	7.7 vs 3.0*	Shaw 2013
PROFILE 1014	Phase III (CZT vs cisplatin or carboplatin + pemetrexed)	343	74 vs. 45*	10.9 vs 7.0*	Mok 2014

\*P < .0001.

CZT, crizotinib; CI, confidence interval; NA, not available; NSCLC, Non-small-cell lung cancer; ORR, objective response rate; PFS, progression-free survival.

analysis<sup>50</sup> suggested that patients reporting skin rash had better survival than those without skin toxicity. Thus rash can be considered an independent, clinical, early predictor of TKI efficacy, and providing this information to patients could help them better tolerate toxicity-related physical and emotional discomfort (Figure 4 and Table 3).

#### **ALK Inhibitor Toxicity**

Patients treated with crizotinib reported fewer toxicities and improved results in lung cancer symptom control and in global quality of life when compared with patients treated with chemotherapy. The most frequent treatment-related adverse effects were visual disorders, such as visual impairment, photopsia, blurred vision, vitreous floaters, photophobia, and diplopia. Gastrointestinal events such as nausea, vomiting, diarrhea, and constipation are generally mild, can be managed with a supportive care, and tend to decrease in severity after the first few weeks of therapy. Because elevated liver enzymes are frequently observed (40% to 70%) with grade 3 in 7% to 15% of patients, monitoring them every 2 weeks of the crizotinib therapy's duration is strongly recommended. Peripheral edema, which is a common side effect, may be managed with standard medical intervention. Finally, about 69% of patients experienced at least 1 episode of sinus bradycardia (heart rate  $\leq$ 60 bpm).<sup>40</sup> With regard to ceritinib, the most grade 3 to 4 common terminology criteria for adverse

events were diarrhea, fatigue, hyperglycemia, hypophosphatemia, increased transaminases and lipase concentrations, and anemia.<sup>42</sup>

#### **Future Perspectives and Conclusions**

The introduction of the EGFR TKIs gefitinib, erlotinib, and afatinib and the ALK inhibitors crizotinib and ceritinib represent the most important innovations in NSCLC treatment over the past ten years. By targeting the main pathways of NSCLC pathophysiology, these new drugs significantly improved survival rates and quality of life in a highly selected subgroup of patients, sparing them from toxic chemotherapy approaches; for the vast majority of patients, however, chemotherapy remains the only potential treatment. Although the target agents were approved only for *EGFR* and *ALK* gene alterations,<sup>8</sup> the number of potential biomarkers is rapidly increasing. New driver mutations were identified in both adenocarcinoma, such as *K-Ras*, *Her-2-neu*, *MET*, *N-Ras*, *BRAF*, *MAP-2-K*, *PIK3CA*, *AKT1*, *ROS*, and *RET* mutations, and squamous cell carcinoma, such as *FGFR-1* amplification, *EGFR* mutation and amplification, *PIK3CA* mutation and amplification, *PTEN* loss, and *DDR2*, but  $>$ 50% of mutations remain unknown.<sup>51,52</sup> Several ongoing trials are investigating the activity of new target agents in patients with these mutations (Table 4). The rapidly growing number of targeted treatment options will lead to new insight into

**Figure 4.** Cutaneous toxicities, or “skin rash”, caused by tyrosine kinase inhibitors in patients with non-small-cell lung cancer.



**Table 3. Common Toxicities With Epidermal Growth Factor Receptor Tyrosine Kinase Inhibitors**

Adverse Events	Gefitinib						Erlotinib						Afatinib	
	NEJSG002		IPASS		First-SIGNAL		WJTOG3405		OPTIMAL		EURTAC		LUX-LUNG 3	Grade >3
	Grade 1-4	Grade >3	Grade 1-4	Grade >3	Grade 1-4	Grade >3	Grade 1-4	Grade >3	Grade 1-4	Grade >3	Grade 1-4	Grade >3	Grade 1-4	Grade >3
Rash	71	5	66	3	72	29	85	1	73	2	80	13	89	16
Diarrhea	34	1	46	4	50	2	54	1	25	1	57	5	95	14
Fatigue	10	2	17	1	28	10	39	1	5	0	57	6	17	1
Stomatitis	NA	NA	17	1	40	2	22	0	13	1	NA	NA	70	9
Vomiting	NA	NA	13	1	19	0	NA	NA	1	0	NA	NA	17	3
AST/ALT elevation	54	26	NA	NA	30	11	70	27	37	4	6	2	NA	NA

Data are percentages.  
 ALT, alanine transaminase; AST, aspartate transaminase; NA, not available.

**Table 4. New Target Agents in Advanced Non-Small-Cell Lung Cancer**

Histological Subtype	Targets	Drugs
Non squamous-cell carcinoma	Anti-EGFR (T790 mol/L)	AZD-9291 CO-1686
	Anti-ALK	Ceritinib
	Anti-MEK	Selumetinib
	Anti-BRAF	Dabrafenib
	Anti-HER2	Trastuzumab Pertuzumab
	Anti-MET	Onartuzumab Tivantinib Cabozantinib Crizotinib
	Anti-RET	Cabozantinib
	Anti-EGFR	Necitumumab
	Anti-FGFR1	Ponatinib Dovitinib Cediranib
	Anti-DDR2	Dasatinib
Squamous-cell carcinoma	Anti-EGFR	Necitumumab
	Anti-FGFR1	Ponatinib Dovitinib Cediranib
	Anti-DDR2	Dasatinib

personalized treatment in the near future. Nowadays, new techniques such as “next-generation-sequencing” make possible the creation of a molecular-genomic profile of every patient’s tumor, based on the analysis of either a single tissue sample, circulating tumor cells, or circulating tumor DNA. Therefore the need for close collaboration between health professionals, including medical oncologists, molecular biologists, pathologists, and family physicians, will increase. The role of family physicians remains critical because of their unique and privileged position of seeing patients on a daily basis; thus they should be updated by other experts on scientific discoveries relevant to their everyday practice and more frequently involved in the global view of care in all the phases.

**References**

1. Cancer facts & figures 2014. Atlanta (GA): American Cancer Society. Available from: <http://www.cancer.org/acs/groups/content/@research/documents/webcontent/acsc-042151.pdf>. Accessed May 7, 2014.
2. Torti D, Trusolino L. Oncogene addiction as a foundational rationale for targeted anti-cancer therapy: promises and perils. *EMBO Mol Med* 2011;3:623–36.
3. Bronte G, Rizzo S, La Paglia L, et al. Driver mutations and differential sensitivity to targeted therapies: a new approach to the treatment of lung adenocarcinoma. *Cancer Treat Rev* 2010;36(Suppl 3):S21–9.
4. Ganz PA, Figlin RA, Haskell CM, La Soto N, Siau J. Supportive care versus supportive care and combina-



- tion chemotherapy in metastatic non-small cell lung cancer. Does chemotherapy make a difference? *Cancer* 1989;63:1271–8.
5. Schiller JH, Harrington D, Belani CP, et al. Comparison of four chemotherapy regimens for advanced non-small-cell lung cancer. *N Engl J Med* 2002;346:92–8.
  6. Scagliotti GV, Parikh P, von Pawel J, et al. Phase III study comparing cisplatin plus gemcitabine with cisplatin plus pemetrexed in chemotherapy-naïve patients with advanced-stage non-small-cell lung cancer. *J Clin Oncol* 2008;26:3543–51.
  7. Paz-Ares LG, de Marinis F, Dediu M, et al. PARAMOUNT: Final overall survival results of the phase III study of maintenance pemetrexed versus placebo immediately after induction treatment with pemetrexed plus cisplatin for advanced nonsquamous non-small-cell lung cancer. *J Clin Oncol* 2013;31:2895–902.
  8. Peters S, Adjei AA, Gridelli C, Reck M, Kerr K, Felip E, ESMO Guidelines Working Group. Metastatic non-small-cell lung cancer (NSCLC): ESMO Clinical Practice Guidelines for diagnosis, treatment and follow-up. *Ann Oncol* 2012;23(Suppl 7):vii56–64.
  9. Mitsudomi T, Kosaka T, Endoh H, et al. Mutations of the epidermal growth factor receptor gene predict prolonged survival after gefitinib treatment in patients with non-small-cell lung cancer with postoperative recurrence. *J Clin Oncol* 2005;23:2513–20.
  10. Takano T, Ohe Y, Sakamoto H, et al. Epidermal growth factor receptor gene mutations and increased copy numbers predict gefitinib sensitivity in patients with recurrent non-small-cell lung cancer. *J Clin Oncol* 2005;23:6829–37.
  11. Han JY, Park K, Kim SW, et al. First-SIGNAL: first-line single-agent irressa versus gemcitabine and cisplatin trial in never-smokers with adenocarcinoma of the lung. *J Clin Oncol* 2012;30:1122–8.
  12. Sharma SV, Bell DW, Settleman J, Haber DA. Epidermal growth factor receptor mutations in lung cancer. *Nat Rev Cancer* 2007;7:169–81.
  13. Rosell R, Moran T, Queralt C, et al; Spanish Lung Cancer Group. Screening for epidermal growth factor receptor mutations in lung cancer. *N Engl J Med* 2009;361:958–67.
  14. Arrieta O, Cardona AF, Federico Bramuglia G, et al. Genotyping non-small cell lung cancer (NSCLC) in Latin America. *J Thorac Oncol* 2011;6:1955–9.
  15. Mok TS, Wu YL, Thongprasert S, et al. Gefitinib or carboplatin-paclitaxel in pulmonary adenocarcinoma. *N Engl J Med* 2009;361:947–57.
  16. Bronte G, Rolfo C, Giovannetti E, et al. Are erlotinib and gefitinib interchangeable, opposite or complementary for non-small cell lung cancer treatment? Biological, pharmacological and clinical aspects. *Crit Rev Oncol Hematol* 2014;89:300–13.
  17. Shepherd FA, Rodrigues Pereira J, Ciuleanu T, et al; National Cancer Institute of Canada Clinical Trials Group. Erlotinib in previously treated non-small-cell lung cancer. *N Engl J Med* 2005;353:123–32.
  18. Li N, Yang L, Ou W, Zhang L, Wang SY. Meta-analysis of EGFR tyrosine kinase inhibitors compared with chemotherapy as second-line treatment in pretreated advanced non-small cell lung cancer. *PLoS One* 2014;9:e102777.
  19. Maemondo M, Inoue A, Kobayashi K, et al; North-East Japan Study Group. Gefitinib or chemotherapy for non-small-cell lung cancer with mutated EGFR. *N Engl J Med* 2010;362:2380–8.
  20. T Mitsudomi T, Morita S, Yatabe Y, et al; West Japan Oncology Group. Gefitinib versus cisplatin plus docetaxel in patients with non-small-cell lung cancer harbouring mutations of the epidermal growth factor receptor (WJTOG3405): an open label, randomised phase 3 trial. *Lancet Oncol* 2010;11:121–8.
  21. Zhou C, Wu YL, Chen G, et al. Erlotinib versus chemotherapy as first-line treatment for patients with advanced EGFR mutation-positive non-small-cell lung cancer (OPTIMAL, CTONG-0802): a multicentre, open-label, randomised, phase 3 study. *Lancet Oncol* 2011;12:735–42.
  22. Rosell R, Carcereny E, Gervaise R, et al. Erlotinib versus standard chemotherapy as first-line treatment for European patients with advanced EGFR mutation-positive non-small-cell lung cancer (EURTAC): a multicentre, open-label, randomised phase 3 trial. *Lancet Oncol* 2012;13:239–46.
  23. Sequist LV, Yang JC, Yamamoto N, et al. Phase III study of afatinib or cisplatin plus pemetrexed in patients with metastatic lung adenocarcinoma with EGFR mutations. *J Clin Oncol* 2013;31:3327–34.
  24. Wu YL, Zhou C, Hu CP, et al. LUX-Lung 6: a randomized, open-label, phase III study of afatinib (A) versus gemcitabine/cisplatin (GC) as first-line treatment for Asian patients (pts) with EGFR mutation-positive (EGFR M+) advanced adenocarcinoma of the lung. *J Clin Oncol* 2013;31(Suppl): Abstract 8016.
  25. Sequist LV, von Pawel J, Garmey EG, et al. Randomized phase II study of erlotinib plus tivantinib versus erlotinib plus placebo in previously treated non-small-cell lung cancer. *J Clin Oncol* 2011;29:3307–15.
  26. Keedy VL, Temin S, Somerfield MR, et al. American Society of Clinical Oncology provisional clinical opinion: epidermal growth factor receptor (EGFR) Mutation testing for patients with advanced non-small-cell lung cancer considering first-line EGFR tyrosine kinase inhibitor therapy. *J Clin Oncol* 2011;29:2121–7.
  27. Kobayashi S, Boggon TJ, Dayaram T, et al. EGFR mutation and resistance of non-small-cell lung cancer to gefitinib. *N Engl J Med* 2005;352:786–92.

28. Janne PA, Ramalingam S, Yang JC, et al. Clinical activity of the mutant-selective EGFR inhibitor AZD9291 in patients (pts) with EGFR inhibitor-resistant non-small cell lung cancer (NSCLC). *J Clin Oncol* 2014;32(5 Suppl): Abstract 8009.
29. Sequist LV, Soria JC, Gadgeel SM, et al. First-in-human evaluation of CO-1686, an irreversible, highly selective tyrosine kinase inhibitor of mutations of EGFR (activating and T790M). *J Clin Oncol* 2014;32(5 Suppl): Abstract 8010.
30. Engelman JA, Zejnullahu K, Mitsudomi T, et al. MET amplification leads to gefitinib resistance in lung cancer by activating ERBB3 signaling. *Science* 2007;316:1039–43.
31. Takezawa K, Pirazzoli V, Arcila ME, et al. HER2 amplification: a potential mechanism of acquired resistance to EGFR inhibition in EGFR-mutant lung cancers that lack the second-site EGFR T790M mutation. *Cancer Discov* 2012;2:922–33.
32. Soda M, Choi YL, Enomoto M, et al. Identification of the transforming EML4-ALK fusion gene in non-small-cell lung cancer. *Nature* 2007;448:561–6.
33. Shaw AT, Yeap BY, Mino-Kenudson M, et al. Clinical features and outcome of patients with non-small-cell lung cancer who harbor EML4-ALK. *J Clin Oncol* 2009;27:4247–53.
34. Klempner SJ, Cohen DW, Costa DB. ALK translocation in non-small cell lung cancer with adenocarcinoma and squamous cell carcinoma markers. *J Thorac Oncol* 2011;6:1439–40.
35. Yang P, Kulig K, Boland JM, et al. Worse disease-free survival in never-smokers with ALK+ lung adenocarcinoma. *J Thorac Oncol* 2012;7:90–7.
36. Lee JO, Kim TM, Lee SH, et al. Anaplastic lymphoma kinase translocation: a predictive biomarker of pemetrexed in patients with non-small cell lung cancer. *J Thorac Oncol* 2011;6:1474–80.
37. Kwak EL, Bank YJ, Camidge DR, et al. Anaplastic lymphoma kinase inhibition in non-small-cell lung cancer. *N Engl J Med* 2010;363:1693–703.
38. Camidge DR, Bang YJ, Kwak EL, et al. Activity and safety of crizotinib in patients with ALK-positive non-small-cell lung cancer: Updated results from a phase 1 study. *Lancet Oncol* 2012;13:1011–1019.
39. Kim DK, Ahn MJ, Yang P, et al. Updated results of a global phase II study with crizotinib in advanced ALK-positive non-small cell lung cancer (NSCLC). *J. Clin. Oncol.* 30: (suppl; abstr. 7533) 2012.
40. Shaw AT, Kim DW, Nakagawa K, et al. Crizotinib versus chemotherapy in advanced ALK-positive lung cancer. *N Engl J Med* 2013;368:2385–94.
41. Mok T, Kim DW, Wu JL, et al. First-line crizotinib versus pemetrexed cisplatin or pemetrexed carboplatin in patients with advanced ALK-positive non-squamous non small-cell lung cancer: results of a phase III study (PROFILE 1014). *J Clin Oncol* 2014; 32(5 Suppl); Abstract 8002.
42. Shaw AT, Engelman JA. Ceritinib in ALK-rearranged non-small-cell lung cancer. *N Engl J Med* 2014;370:1189–97.
43. Katayama R, Shaw AT, Kahn TM, et al. Mechanisms of acquired crizotinib resistance in ALK-rearranged lung cancers. *Sci Transl Med* 2012;4: 120ra17.
44. Pérez-Soler R, Saltz L. Cutaneous adverse effects with HER1/EGFR-targeted agents: is there a silver lining? *J Clin Oncol* 2005;23:5235–46.
45. Joshi SS, Ortiz S, Witherspoon JN, et al. Effects of epidermal growth factor receptor inhibitor-induced dermatologic toxicities on quality of life. *Cancer* 2010;116:3916–23.
46. Boone SL, Rademaker A, Liu D, Pfeiffer C, Mauro DJ, Lacouture ME. Impact and management of skin toxicity associated with anti-epidermal growth factor receptor therapy: survey results. *Oncology* 2007;72: 152–9.
47. Busam KJ, Capodiceci P, Motzer R, Kiehn T, Phelan D, Halpern AC. Cutaneous side-effects in cancer patients treated with the anti-epidermal growth factor receptor antibody C225. *Br J Dermatol* 2001;144: 1169–76.
48. Lynch TJ Jr, Kim ES, Eaby B, Garey J, West DP, Lacouture ME. Epidermal growth factor receptor inhibitor-associated cutaneous toxicities: an evolving paradigm in clinical management. *Oncologist* 2007; 12:610–21.
49. Peuvrel L, Bachmeyer C, Requiai Z, et al. Semiology of skin toxicity associated with epidermal growth factor receptor (EGFR) inhibitors. *Support Care Cancer* 2012;20:909–21.
50. Petrelli F, Borgonovo K, Cabiddu M, Lonati V, Barni S. Relationship between skin rash and outcome in non-small-cell lung cancer patients treated with anti-EGFR tyrosine kinase inhibitors: a literature-based meta-analysis of 24 trials. *Lung Cancer* 2012;78:8–15.
51. Oxnard GR, Binder A, Jänne PA. New targetable oncogenes in non-small-cell lung cancer. *J Clin Oncol* 2013;31:1097–104.
52. Hammerman PS, Sos ML, Ramos AH, et al. Mutations in the DDR2 kinase gene identify a novel therapeutic target in squamous cell lung cancer. *Cancer Discov* 2011;1:78–89.