

Distribution, function and predictive value of tumor-infiltrating $\gamma\delta$ T lymphocytes

Francesco Dieli,^{1,3,*} Giorgio Stassi,² Matilde Todaro,^{2,3} Serena Meraviglia,¹ Nadia Caccamo^{1,3} and Adriana Cordova²

¹Department of Biopathology and Biotechnology; University of Palermo; Palermo, Italy; ²Department of Surgical and Anatomical Disciplines; University of Palermo; Palermo, Italy; ³Biomedical Research Centre; University of Palermo; Palermo, Italy

Keywords: $\gamma\delta$ T cells, cytokines, cytotoxicity, melanoma, tumor-infiltrating lymphocytes

Abbreviations: T_{EM}, effector memory T; T_{EMRA}, terminally differentiated effector memory T; Treg, regulatory T cell

Although $\gamma\delta$ T cells are known to exert both tumor-preventing and tumor-promoting activity, there is still little information on the functional characteristics and clinical significance of $\gamma\delta$ T cells isolated from the tumor site. In a recent study, we have investigated the distribution of different $\gamma\delta$ T-cell populations in melanoma and their impact on disease outcome.

Substantial evidence indicates that the immune system participates in cancer pathogenesis and may either contribute to disease progression or potentially inhibit tumor growth. On one hand, regressing tumor lesions are often markedly infiltrated by mononuclear cells and the presence of T lymphocytes has been associated with improved prognosis in patients affected by different types of cancer.¹ On the other hand, tumor infiltration by T-lymphocyte subsets endowed with immunoregulatory or suppressive potential has been associated with tumor progression and unfavorable prognosis.¹ Although most studies on the role of the immune system in oncogenesis, tumor progression and response to therapy have focused on CD8⁺ T cells, other lymphocyte subsets may be involved. Thus, understanding the role of different subsets of tumor-infiltrating immune cells in the pathogenesis of specific tumors is critical for the development of efficient antitumor immunotherapeutic strategies.

$\gamma\delta$ T lymphocytes are important effector cells that may play a critical role in cancer immunosurveillance.² In line with this notion, results from recent clinical trials support the use of $\gamma\delta$ T cells as immunotherapeutic agents, either via the adoptive transfer of ex vivo expanded $\gamma\delta$ T cells

or following the activation of $\gamma\delta$ T cells in vivo, by means of compounds such as phosphoantigens or aminobisphosphonates.³ $\gamma\delta$ T cells are heterogeneous and can be sub-divided into two main populations based on phenotypic and functional parameters: $\gamma\delta$ T cells expressing the V δ 1 T-cell receptor (TCR) chain, which are mostly found in mucosal tissues, and $\gamma\delta$ T cells expressing the V δ 2 TCR chain, which predominate in the peripheral blood and secondary lymphoid organs. $\gamma\delta$ T cells are endowed with a variety of effector functions that contribute to antitumor immune responses. In particular, $\gamma\delta$ T cells can mediate cytotoxic activity against cancer cells, produce T_H1-associated cytokines and cross-talk with dendritic cells, macrophages and B cells.⁴ This said, under appropriate conditions, $\gamma\delta$ T cells may divert from their typical T_H1-like phenotype and polarize toward T_H2, T_H17, and regulatory T cells (Tregs),⁴ all of which (at least potentially) inhibit antitumor immune responses.

Driven by these observations, we have recently evaluated the representation and functional characteristics of tumor-infiltrating $\gamma\delta$ T cells isolated from patients affected by primary melanoma and correlated the levels of infiltrating $\gamma\delta$ T cells with common clinicopathological features.⁵

Immune cells were detected in 70% of 74 tissue specimens from primary melanoma patients, macrophages being the predominant cell population. $\gamma\delta$ T cells were the major CD3⁺ T-lymphocyte subset and V δ 1 and V δ 2 T cells were equally represented. The vast majority of melanoma-infiltrating V δ 1 and V δ 2 T cells exhibited an effector memory (T_{EM}) or terminally differentiated effector memory (T_{EMRA}) phenotype, which is indicative of cells that reside at or have migrated to sites of inflammation and display immediate effector functions.⁶ However, because the yield of primary $\gamma\delta$ T cells isolated from melanoma lesions was very low and did not allow for detailed functional studies, we generated a panel of V δ 1 and V δ 2 polyclonal $\gamma\delta$ T-cell lines starting from the tumor-infiltrating immune cells of 8 patients. All tested V δ 1 and V δ 2 T-cell lines were able to produce cytokines with proven antitumor activity, such as tumor necrosis factor α (TNF α) and interferon γ (IFN γ) and to kill melanoma cells in vitro, suggesting that both resident V δ 1 and recently migrated V δ 2 T cells may contribute to tumor growth control. However, we found substantial differences in the cytotoxic activity of V δ 1 and V δ 2 T cells. In particular, while the majority of V δ 1 T-cell lines exerted potent cytotoxic

*Correspondence to: Francesco Dieli; Email: francesco.dieli@unipa.it

Submitted: 12/27/12; Accepted: 12/28/12

Citation: Dieli F, Stassi G, Todaro M, Meraviglia S, Caccamo N, Cordova A. Distribution, function and predictive value of tumor-infiltrating $\gamma\delta$ T lymphocytes. Oncoimmunology 2013; 2:e23434; <http://dx.doi.org/10.4161/onci.23434>

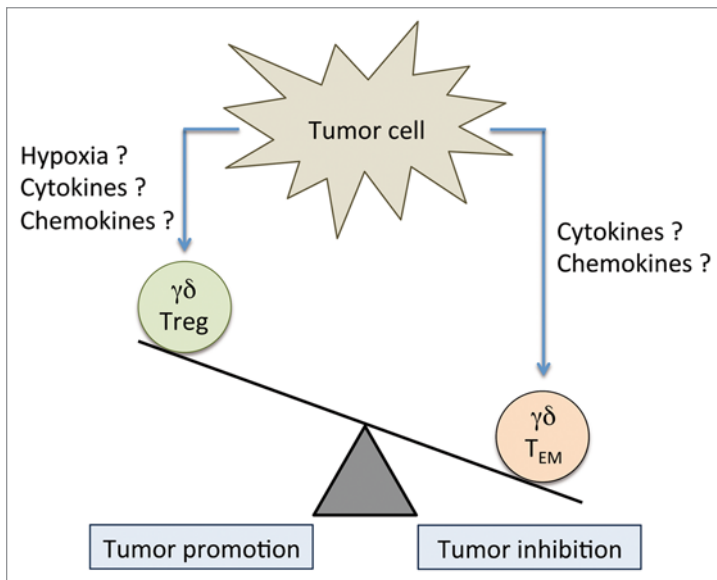


Figure 1. Potential role of $\gamma\delta$ T cells in tumor control. T_{EM}, effector memory T cell; Treg, regulatory T cell.

effects against melanoma cell lines in vitro, only a few V δ 2 T-cell lines were able to kill such targets.

In our study, the presence of $\gamma\delta$ T cells, and in particular of the V δ 2 subset, among tumor-infiltrating immune cells significantly correlated with early stage melanoma, a finding that may stem, at least in part, from the limited efficacy of local immune responses at advanced disease stages. Of note, higher percentages of $\gamma\delta$ T cells were detected in patients bearing early (Stage 0–II) melanoma lesions and no metastases, whereas $\gamma\delta$ cells were scarce in patients at an advanced disease stage (Stage III–IV) and bearing metastatic lesions.

Recent studies have revealed a high frequency of $\gamma\delta$ T cells among tumor-infiltrating lymphocytes from patients affected by different types of cancer, but the clinical relevance of intratumoral $\gamma\delta$ T cells remains unknown. Thus, while in one study the percentage of $\gamma\delta$ T cells infiltrating renal cell carcinoma lesions failed to correlate with prognostic features,⁷

in a cohort of breast cancer patients the amount of intratumoral $\gamma\delta$ T cells correlated positively with advanced tumor stages and lymph node metastasis, but inversely with both relapse-free and overall survival.⁸ Nowadays, we can only speculate on the discrepancy between results obtained in melanoma, renal cell carcinoma and breast cancer patients. The relative abundance of V δ 1 and V δ 2 $\gamma\delta$ T cells can only be discerned by the use of additional markers (cytokine production, cytotoxic activity, migratory properties), implying that a positive or negative correlation with prognosis may depend on the specific $\gamma\delta$ T-cell subset recruited at the tumor site (Fig. 1). Furthermore, the net biological effects of $\gamma\delta$ T cells may depend on the tumor type and its anatomical location, perhaps reflecting micro-environmental differences. For instance, transforming growth factor β (TGF β), which is abundantly secreted at the tumor site by tumor-infiltrating macrophages or malignant cells themselves, may favor the differentiation of $\gamma\delta$ cells with Treg-like

properties, which inhibit antitumor immune responses.⁴

There is thus an urgent need for additional prospective investigations of the relevance of $\gamma\delta$ T cells in different types of tumor, evaluating multiple structural and functional parameters. Such a knowledge will undoubtedly help in the determination of the most significant biomarkers to predict disease outcome and eventually guide $\gamma\delta$ T cell-based tumor-specific immunotherapies.

Disclosure of Potential Conflicts of Interest

No potential conflicts of interest were disclosed.

References

1. Gooden MJ, de Bock GH, Leffers N, Daemen T, Nijman HW. The prognostic influence of tumour-infiltrating lymphocytes in cancer: a systematic review with meta-analysis. *Br J Cancer* 2011; 105:93-103; PMID:21629244; <http://dx.doi.org/10.1038/bjc.2011.189>.
2. Hayday AC. Gammadelta T cells and the lymphoid stress-surveillance response. *Immunity* 2009; 31:184-96; PMID:19699170; <http://dx.doi.org/10.1016/j.immuni.2009.08.006>.
3. Hannani D, Ma Y, Yamazaki T, Déchanet-Merville J, Kroemer G, Zitvogel L. Harnessing $\gamma\delta$ T cells in anticancer immunotherapy. *Trends Immunol* 2012; 33:199-206; PMID:22364810; <http://dx.doi.org/10.1016/j.it.2012.01.006>.
4. Caccamo N, Todaro M, Sireci G, Meraviglia S, Stassi G, Dieli F. Mechanisms underlying lineage commitment and plasticity of human $\gamma\delta$ T cells. *Cell Mol Immunol* 2013; 10:30-4; PMID:23085943.
5. Cordova A, Toia F, La Mendola C, Orlando V, Meraviglia S, Rinaldi G, et al. Characterization of human $\gamma\delta$ T lymphocytes infiltrating primary malignant melanomas. *PLoS One* 2012; 7:e49878; PMID:23189169; <http://dx.doi.org/10.1371/journal.pone.0049878>.
6. Dieli F, Poccia F, Lipp M, Sireci G, Caccamo N, Di Sano C, et al. Differentiation of effector/memory Vdelta2 T cells and migratory routes in lymph nodes or inflammatory sites. *J Exp Med* 2003; 198:391-7; PMID:12900516; <http://dx.doi.org/10.1084/jem.20030235>.
7. Inman BA, Frigola X, Harris KJ, Kuntz SM, Lohse CM, Leibovich BC, et al. Questionable relevance of $\gamma\delta$ T lymphocytes in renal cell carcinoma. *J Immunol* 2008; 180:3578-84; PMID:18292585.
8. Ma C, Zhang Q, Ye J, Wang F, Zhang Y, Wevers E, et al. Tumor-infiltrating $\gamma\delta$ T lymphocytes predict clinical outcome in human breast cancer. *J Immunol* 2012; 189:5029-36; PMID:23034170; <http://dx.doi.org/10.4049/jimmunol.1201892>.