



Inferring $S_8(z)$ and $\gamma(z)$ with cosmic growth rate measurements using machine learning

Felipe Avila^{1,a}, Armando Bernui¹, Alexander Bonilla², Rafael C. Nunes^{3,4}

¹ Observatório Nacional, Rua General José Cristino 77, São Cristóvão, Rio de Janeiro, RJ 20921-400, Brazil

² Departamento de Física, Universidade Federal de Juiz de Fora, Juiz de Fora, MG 36036-330, Brazil

³ Instituto de Física, Universidade Federal do Rio Grande do Sul, Porto Alegre, RS 91501-970, Brazil

⁴ Instituto Nacional de Pesquisas Espaciais, Av. dos Astronautas 1758, Jardim da Granja, São José dos Campos, SP, Brazil

Received: 12 May 2022 / Accepted: 26 June 2022

© The Author(s) 2022

Abstract Measurements of the cosmological parameter S_8 provided by cosmic microwave background and large scale structure data reveal some tension between them, suggesting that the clustering features of matter in these early and late cosmological tracers could be different. In this work, we use a supervised learning method designed to solve Bayesian approach to regression, known as Gaussian Processes regression, to quantify the cosmic evolution of S_8 up to $z \sim 1.5$. For this, we propose a novel approach to find firstly the evolution of the function $\sigma_8(z)$, then we find the function $S_8(z)$. As a sub-product we obtain a minimal cosmological model-dependent $\sigma_8(z=0)$ and $S_8(z=0)$ estimates. We select independent data measurements of the growth rate $f(z)$ and of $[f\sigma_8](z)$ according to criteria of non-correlated data, then we perform the Gaussian reconstruction of these data sets to obtain the cosmic evolution of $\sigma_8(z)$, $S_8(z)$, and the growth index $\gamma(z)$. Our statistical analyses show that $S_8(z)$ is compatible with Planck Λ CDM cosmology; when evaluated at the present time we find $\sigma_8(z=0) = 0.766 \pm 0.116$ and $S_8(z=0) = 0.732 \pm 0.115$. Applying our methodology to the growth index, we find $\gamma(z=0) = 0.465 \pm 0.140$. Moreover, we compare our results with others recently obtained in the literature. In none of these functions, i.e. $\sigma_8(z)$, $S_8(z)$, and $\gamma(z)$, do we find significant deviations from the standard cosmology predictions.

1 Introduction

The way how the matter clusters throughout the universe evolution is one of the critical probes to judge whether the concordance model Λ CDM is, in fact, the standard model of cosmology. In front of this scenario, accurate measurements

of $f(z)$, the growth rate of cosmic structures, and of $\sigma_8(z)$, the variance of the matter fluctuations at the scale of 8 Mpc/h, are important scientific targets of current and future large astronomical surveys [1–3].

The growth rate, f , represents a measure of the matter clustering evolution from the primordial density fluctuations to the large-scale structures observed today, as such it behaves differently in Λ CDM-type models, based on the theory of general relativity (GR), and in alternative models of cosmology, based on modified gravity theories. On the other hand, $\sigma_{8,0} \equiv \sigma_8(z=0)$ can be obtained using the cosmic microwave background (CMB) data, where it scales the overall amplitude of the measured angular power spectrum¹ [4].

The growth rate of cosmic structures is defined as $f(a) \equiv d \ln D(a)/d \ln a$, where $D = D(a)$ is the linear growth function, and a is the scale factor in the Robertson–Walker metric, based on GR theory. A direct measurement of f applying the above relationship to a given data set does not work because the cosmological observable is the density contrast and not the growth function $D(a)$ [5]. However, it is possible to obtain indirect measurements of f if one can measure the velocity scale parameter $\beta \equiv f/b$, and one knows the linear bias b of the cosmological tracer used in the measurement of β [6–9]. Additionally, the most common approach to quantify the clustering evolution of cosmic structures is in the form of their product,² $[f\sigma_8](z)$, through the analyses of the Redshift Space Distortions (RSD) [10], that is, studying the distortions in the two-point correlation function (2PCF) caused by the Doppler effect of galaxy peculiar velocities, associated with

¹ The observed CMB angular power spectrum amplitude scales nearly proportional with the primordial comoving curvature power spectrum amplitude A_s , but assuming the Λ CDM model this amplitude constraint can be converted into the fluctuation at the present day, usually quantified by the $\sigma_{8,0}$ parameter.

² Usually, $f\sigma_8$ is termed the parametrized growth rate.

^a e-mail: felipeavila@on.br (corresponding author)

the gravitational growth of inhomogeneities [11] (for other applications of the 2PCF in matter clustering analyses see, e.g., [12–17]).

Efforts done in recent years have provided measurements of both quantities: $f\sigma_8$ and f , at various redshifts and through the analyses of a diversity of cosmological tracers, including luminous red galaxies, blue galaxies, voids, and quasars. We shall explore these data to find, as robust as possible, a measurement of $\sigma_8(z)$ and $S_8(z)$, quantities that has been reported to be in some tension when comparing the measurements from the last Planck CMB data release [4] with the analyses from several large-scale structure surveys [18–24].

The main objective of our analyses is to break the degeneracy in the product function $[f\sigma_8](z)$ using the cosmic growth rate data $f(z)$, to know the evolution of the functions $\sigma_8(z)$ and $S_8(z)$. In turn, the knowledge of $\sigma_8(z)$ provides its value at $z = 0$, $\sigma_{8,0}$, an interesting outcome of these analyses considering the current σ_8 -tension reported in the literature [21, 22, 24]. Our approach consists of using the Gaussian processes tool to reconstruct the functions $[f\sigma_8](z)$ and $f(z)$, using for this task two data sets: 20 measurements of $[f\sigma_8](z)$ and 11 measurements of $f(z)$, respectively. The reconstructed functions $[f\sigma_8]^{\text{GP}}(z)$ and $f^{\text{GP}}(z)$ allow us to know the function $\sigma_8(z)$, as described in the next section.

This work is organized as follows. In Sect. 2 we review the main equations of the linear theory of matter perturbations. In Sect. 3 we present the data sets and describe the statistical methodology used in our analyses. Section 4 we report our main results and discussions. We draw our concluding remarks in Sect. 5.

2 Theory

On sub-horizon scales, in the linear regime, and assuming that dark energy does not cluster, the evolution equation for the growth function is given by

$$\frac{df(a)}{d \ln a} + f^2 + \left(2 + \frac{1}{2} \frac{d \ln H(a)^2}{d \ln a}\right) f - \frac{3}{2} \Omega_m(a) = 0, \quad (1)$$

where $\Omega_m(a) \equiv \Omega_{m,0} a^{-3} H_0^2 / H(a)^2$, with $\Omega_{m,0} \equiv \Omega_m(z = 0)$ the matter density parameter today, and $H(a)$ is the Hubble rate as a function of the scale factor, a . A good approximation for $f(z)$ is given by [25–27]

$$f(z) \simeq \Omega_m^\gamma(z), \quad (2)$$

where γ is termed the growth index. For dark energy models within GR theory γ is considered a constant with approximate value $\gamma \simeq 3(\omega - 1)/(6\omega - 5)$ [28]. In the Λ CDM model, where $\omega = -1$, one has $\gamma = 6/11 \simeq 0.55$. However, in alternative cosmological scenarios the growth index can indeed assume distinct functional forms beyond the constant

value [28, 29]. In fact, from Eq. (2) one can define,

$$\gamma(z) \equiv \frac{\ln f(z)}{\ln \Omega_m(z)}, \quad (3)$$

a more general definition for γ .

The mass variance of the matter clustering is given by

$$\sigma_R^2(z) = \frac{1}{2\pi^2} \int_0^\infty P(k, z) W_R^2(k) dk, \quad (4)$$

where $P(k, z)$ is the matter power spectrum and $W_R(k)$ is the window function with R symbolizing a physical scale. The matter power spectrum can be written as

$$P(k, z) = \left[\frac{D(z)}{D(z=0)} \right]^2 T^2(k) P(k, z=0), \quad (5)$$

where $T^2(k)$ is the transfer function. One can write the Eq. (4) as

$$\sigma_R^2(z) = D^2(z) \sigma_R^2(z=0), \quad (6)$$

assuming the normalization $D(z=0) = 1$ for the linear growth function $D(z)$ [30].

From the analyses of diverse cosmological tracers it is common to perform the measurements at scales of $R = 8 \text{ Mpc}/h$, that is, $\sigma_{8,0} \equiv \sigma_8(z=0)$. Thus, for the scale of $8 \text{ Mpc}/h$ one has

$$\sigma_8(z) = D(z) \sigma_{8,0}. \quad (7)$$

Then, the product $[f\sigma_8](z)$ can be written as

$$[f\sigma_8](z) = -\sigma_{8,0} (1+z) \frac{dD(z)}{dz}, \quad (8)$$

which directly measures the matter density perturbation rate.

For the purpose of our analyses, one can obtain the function $\sigma_8(z)$ as the quotient of the functions

$$\sigma_8^{\text{q}}(z) \equiv \frac{[f\sigma_8]^{\text{GP}}(z)}{f^{\text{GP}}(z)}, \quad (9)$$

where $f^{\text{GP}}(z)$ and $[f\sigma_8]^{\text{GP}}(z)$ were reconstructed using Gaussian Processes from measurements of $f(z)$ and $[f\sigma_8](z)$, respectively. The superscript ‘q’ in σ_8^{q} is used to indicate the quotient shown in Eq. (9).

Once we obtain the function $\sigma_8^{\text{q}}(z)$, we shall obtain the function $S_8(z)$ through

$$S_8(z) \equiv \sigma_8^{\text{q}}(z) \left(\frac{\Omega_m(z)}{0.30} \right)^{1/2}. \quad (10)$$

3 Data set and methodology

In this section we present the $f(z)$ and $[f\sigma_8](z)$ data used to reconstruct first the $f^{\text{GP}}(z)$ and $[f\sigma_8]^{\text{GP}}(z)$ functions, then used to infer the cosmic evolution of the $\sigma_8(z)$ and $S_8(z)$ functions. In addition to these data, we use a set of $E(z)$

Table 1 Data compilation of 11 $f(z)$ measurements; see Sect. 3 for details

Survey	z	f	Reference	Cosmological tracer
ALFALFA	0.013	0.56 ± 0.07	[9]	HI extragalactic sources
2dFGRS	0.15	0.49 ± 0.14	[35,36]	galaxies
GAMA	0.18	0.49 ± 0.12	[37]	Multiple-tracer: blue and red gals
WiggleZ	0.22	0.60 ± 0.10	[38]	Galaxies
SDSS	0.35	0.70 ± 0.18	[39]	Luminous red galaxies (LRG)
GAMA	0.38	0.66 ± 0.09	[37]	multiple-tracer: blue & Red gals
WiggleZ	0.41	0.70 ± 0.07	[38]	Galaxies
2SLAQ	0.55	0.75 ± 0.18	[40]	LRG and quasars
WiggleZ	0.60	0.73 ± 0.07	[38]	Galaxies
VIMOS-VLT Deep Survey	0.77	0.91 ± 0.36	[36]	Faint galaxies
2QZ & 2SLAQ	1.40	0.90 ± 0.24	[41]	Quasars

measurements performed by [31], in the redshift interval $z \in [0.0, 1.5]$, to reconstruct the $\gamma(z)$ function defined in Eq. (3).

3.1 The $f(z)$ data

The literature reports diverse compilations of measurements of the growth rate of cosmic structures, $[f\sigma_8](z)$ (see, e.g. [32–34]), which we update here. Our compilation of $f(z)$ data, shown in Table 1, follows these criteria:

- (i) We consider $f(z)$ data obtained from uncorrelated redshift bins when the measurements concern the same cosmological tracer, and data from possibly correlated redshift bins when different cosmological tracers were analysed.
- (ii) We consider only data with a direct measurement of f , and not measurements of $f\sigma_8$ that use a fiducial cosmological model to eliminate the σ_8 dependence.
- (iii) We consider the latest measurement of f when the same survey collaboration performed two or more measurements corresponding to diverse data releases.

3.2 The $[f\sigma_8](z)$ data

In Table 2 we present our compilation of $f\sigma_8$ data. The criteria for selecting these data are:

- (i) We consider $[f\sigma_8](z)$ data obtained from uncorrelated redshift bins when the measurements concern the same cosmological tracer, and data from possibly correlated redshift bins when different cosmological tracers were analysed.
- (ii) We consider direct measurements of $f\sigma_8$.
- (iii) We consider the latest measurement of $f\sigma_8$ when the same survey collaboration performed two or more measurements corresponding to diverse data releases.

3.3 Gaussian processes regression

To extract maximum cosmological information from a given data set, as for instance the f and $f\sigma_8$ data listed in Tables 1 and 2, we perform a Gaussian Processes Regression (GP), obtaining in this way smooth curves for the functions $f^{GP}(z)$ and $[f\sigma_8]^{GP}(z)$ according to the approach described in Sect. 2. Both reconstructed functions are then used to obtain the cosmic evolution of $\sigma_8^d(z)$ and $S_8(z)$.

The GP consists of generic supervised learning method designed to solve regression and probabilistic classification problems, where we can interpolate the observations and compute empirical confidence intervals and a prediction in some region of interest [54]. In the cosmological context, GP techniques has been used to reconstruct cosmological parameters, like the dark energy equation of state, $w(z)$, the expansion rate of the universe, the cosmic growth rate, and other cosmological functions (see, e.g., [5,55–74] for a short list of references).

The main advantage in this procedure is that it is able to make a non-parametric inference using only a few physical considerations and minimal cosmological assumptions. Our aim is to reconstruct a function $F(x)$ from a set of its measured values $F(x_i) \pm \sigma_i$, for different values $\{x_i\}$ of the variable x . It assumes that the value of the function at any point x_i follows a Gaussian distribution. The value of the function at x_i is correlated with the value at other point x'_i . Thus, a GP is defined as

$$F(x_i) = \mathcal{GP}(\mu(x_i), \text{cov}[F(x_i), F(x_i)]), \tag{11}$$

where $\mu(x_i)$ and $\text{cov}[F(x_i), F(x_i)]$ are the mean and the variance of the variable at x_i , respectively. For the reconstruction of the function $F(x_i)$, the covariance between the values of this function at different positions x_i can be modeled as

$$\text{cov}[F(x), F(x')] = k(x, x'), \tag{12}$$

Table 2 Data compilation of 20 $[f\sigma_8](z)$ measurements; see Sect. 3 for details

Survey	z	$f\sigma_8$	Reference	Cosmological tracer
SnIa+IRAS	0.02	0.398 ± 0.065	[42]	SNIa + galaxies
6dFGS	0.025	0.39 ± 0.11	[43]	Voids
6dFGS	0.067	0.423 ± 0.055	[44]	Galaxies
SDSS-veloc	0.10	0.37 ± 0.13	[45]	DR7 galaxies
SDSS-IV	0.15	0.53 ± 0.16	[46]	eBOSS DR16 MGS
BOSS-LOWZ	0.32	0.384 ± 0.095	[47]	DR10, DR11
SDSS-IV	0.38	0.497 ± 0.045	[46]	eBOSS DR16 galaxies
WiggleZ	0.44	0.413 ± 0.080	[48]	Bright emission-line galaxies
CMASS-BOSS	0.57	0.453 ± 0.022	[49]	DR12 voids + galaxies
SDSS-CMASS	0.59	0.488 ± 0.060	[50]	DR12
SDSS-IV	0.70	0.473 ± 0.041	[46]	eBOSS DR16 LRG
WiggleZ	0.73	0.437 ± 0.072	[48]	Bright emission-line galaxies
SDSS-IV	0.74	0.50 ± 0.11	[2]	eBOSS DR16 voids
VIPERS v7	0.76	0.440 ± 0.040	[51]	Galaxies
SDSS-IV	0.85	0.52 ± 0.10	[2]	eBOSS DR16 voids
SDSS-IV	0.978	0.379 ± 0.176	[52]	eBOSS DR14 quasars
VIPERS v7	1.05	0.280 ± 0.080	[51]	Galaxies
FastSound	1.40	0.482 ± 0.116	[53]	ELG
SDSS-IV	1.48	0.30 ± 0.13	[2]	eBOSS DR16 voids
SDSS-IV	1.944	0.364 ± 0.106	[52]	eBOSS DR14 quasars

where $k(x, x')$ is known as the kernel function. The kernel choice is often very crucial to obtain good results regarding the reconstruction of the function $F(x)$.

The kernel most commonly used is the standard Gaussian squared-exponential (SE) approach, defined as

$$k_{SE}(x, x') = \sigma_F^2 \exp\left(-\frac{|x - x'|^2}{2l^2}\right), \tag{13}$$

where σ_F^2 is the signal variance, which controls the strength of the correlation of the function F , and l is the length scale that determines the capacity to model the main characteristics (global and local) of F in the evaluation region (l measures the coherence length of the correlation in x). These two parameters are often called hyper-parameters.

However, given the irregular pattern noticed in our data sets (observe the blue squares representing the $f(z)$ and $[f\sigma_8](z)$ data shown in the plots of Fig. 1), a more general kernel is suitable for the GP analyses, namely the Rational Quadratic kernel (RQ), defined as [54]

$$k_{RQ}(x, x') = \left(1 + \frac{|x - x'|^2}{2\alpha l^2}\right)^{-\alpha}, \tag{14}$$

where α is the scale mixture parameter. This kernel can be seen as an infinite sum of SE kernels with different characteristic length-scales.

Beside the choice of the kernel, the length scale bounds also have an influence in the results, as discussed in [66, 75]. For data showing irregular pattern behavior, as the data

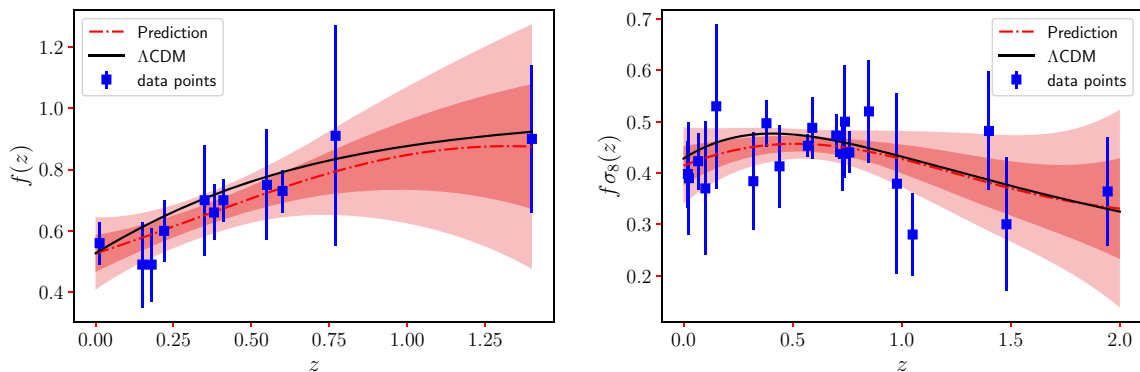


Fig. 1 Left panel: growth rate reconstruction $f^{GP}(z)$ from Table 1. Right panel: the reconstruction of $[f\sigma_8]^{GP}(z)$ function using the sample in Table 2. In both plots the shaded areas represent the 1σ and 2σ CL regions

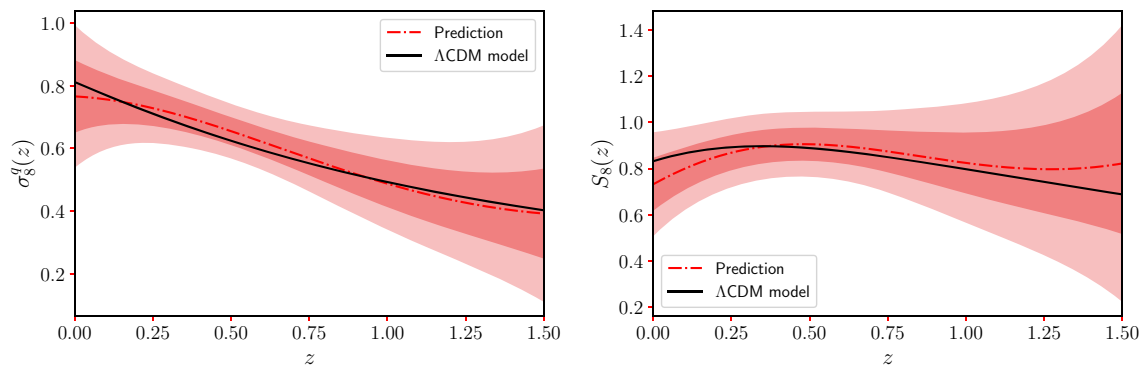


Fig. 2 Left panel: reconstruction of the function $\sigma_8^q(z)$ (the letter q to remember its origin: the quotient of two continuous functions) at 1σ and 2σ CL obtained from our $[f\sigma_8](z)$ and $f(z)$ data sample. The dot-dashed line represents the prediction from the data. Right panel: same

we are considering for analyses, a more restrictive bounds for the hyper-parameters are necessary. To reconstruct the function $[f\sigma_8](z)$ correctly, our choice for the length scale bound corresponds to the redshift interval of the sample. For the $f\sigma_8$ sample, for instance, we fix the priors $0.1 \leq l \leq 2$ and $0.1 \leq \alpha \leq 2$.

It is worth mentioning that the choice of the kernel and the length scale parameters, l and α , were delicate steps for a robust GP reconstruction of the function $\gamma(z)$ from the $[f\sigma_8](z)$ data sample. However, the reconstructed functions $\sigma_8^q(z)$ and $S_8(z)$ were obtained robustly against those particular choices, and this is also true for the $\gamma(z)$ function reconstructed using the $f(z)$ and $E(z)$ data.

4 Results and discussions

The left panel of Fig. 1 shows the $f(z)$ reconstruction at 1σ and 2σ confidence levels (CL) in the redshift range $z \in [0.0, 1.4]$, and the blue squares are the data points from Table 1. The dash-dot line is the prediction obtained from the GP using the RQ kernel. When evaluated at the present time, we find $f(z = 0) = 0.526 \pm 0.060$ at 1σ CL. In the right panel of Fig. 1 we quantify the same statistical information, but assuming our $[f\sigma_8](z)$ data sample. When evaluated at the present time, $z = 0$, we find $f\sigma_8(z = 0) = 0.414 \pm 0.038$ at 1σ CL. In both panels, the black solid line represents the Λ CDM prediction with the Planck-CMB best fit values [76]. One can notice that the model-independent obtained here from both data samples, Tables 1 and 2, predicts a smaller amplitude in comparison with Λ CDM model, but globally compatible within 2σ uncertainties.

Figure 2 on the left panel shows the function $\sigma_8^q(z)$ obtained through the methodology described in Sect. 2. When evaluated at the present time, we find $\sigma_{8,0}^q = 0.766 \pm 0.116$ at 1σ CL. On the right panel of Fig. 2 we show the function S_8

as in left panel, but for the $S_8(z)$ function. The black line represents the prediction from the Λ CDM model considering the Planck-CMB cosmological parameters

obtained using $\sigma_8^q(z)$ according to Eq. (10). Here one notices that for such a procedure we need infer also a reconstruction process for the function $\Omega_m(z)$. For this, in the context of the standard framework, we can use the $O_m(z)$ diagnostic function [77]

$$O_m(z) = \frac{E^2(z) - 1}{(1+z)^3 - 1}. \tag{15}$$

If the expansion history $E(z)$ is driven by the standard Λ CDM model with null spatial curvature, then the function $O_m(z)$ is proportional to the matter density $\Omega_m(z)$. To reconstruct the $\Omega_m(z)$ function in minimal model assumptions, let us use the Supernovae Type Ia data from the Pantheon sample [78]. As is well known, the Supernovae Type Ia traditionally have been one of the most important astrophysical tools in establishing the so-called standard cosmological model. For the present analyses, we use the Pantheon compilation, which consists of 1048 SNIa distributed in the range $0.01 < z < 2.3$ [78]. With the hypothesis of a spatially flat Universe, the full sample of Pantheon can be binned into six model independent $E(z)$ data points [31]. We study the six data points reported by [79] in the form of $E(z)$, including theoretical and statistical considerations made by the authors there for its implementation. Under these considerations, we find $\Omega_{m,0} = 0.274 \pm 0.073$ at 1σ CL. Note that this estimate is model-independent. Then, we reconstruct the evolution of the matter density in a model-independent way, by applying again the Pantheon sample on the definition $\Omega_m(z) \equiv \Omega_{m,0}(1+z)^3/E^2(z)$. Figure 3 on the left panel shows the robust reconstruction for the $E(z)$ function and on the right panel for the $O_m(z)$ diagnostic function. After these steps, we can infer the reconstruction for the S_8 function as a function of redshift (right panel in Fig. 2). When evaluated at the present time, we find $S_8(z = 0) = 0.732 \pm 0.115$ at 1σ CL.

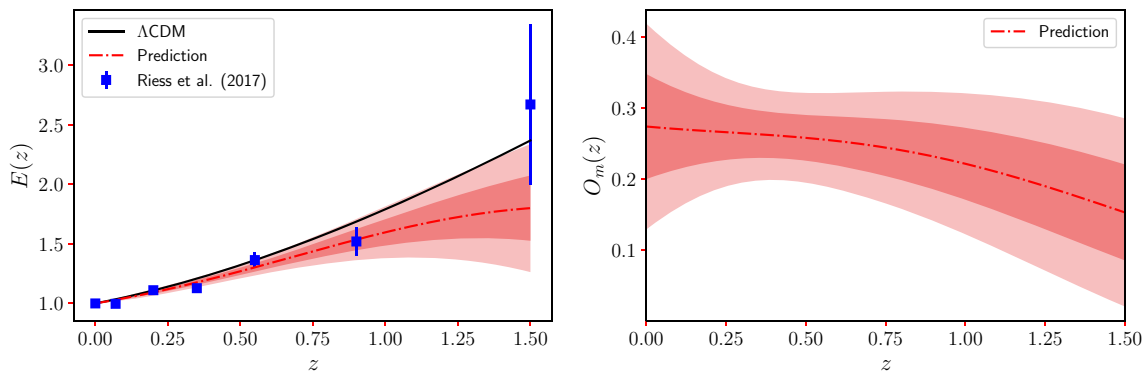


Fig. 3 Left panel: reconstruction of the $E(z)$ function from the Pantheon sample. Right panel: reconstruction of the $O_m(z)$ diagnostic test function from the Pantheon sample. The black line represents Λ CDM model from Planck-CMB values

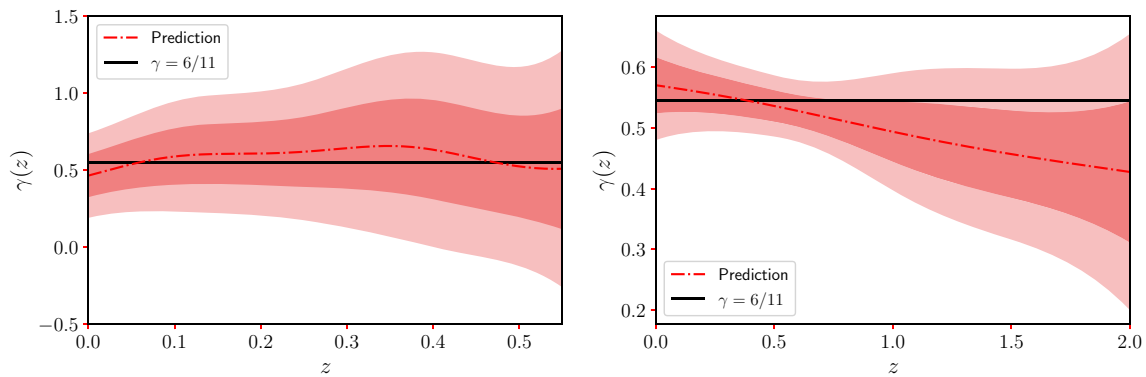


Fig. 4 Left panel: reconstruction of the $\gamma(z)$ function with the $f(z)$ sample. Right panel: reconstruction of the $\gamma(z)$ function with the $f\sigma_8$ sample

Within the context of the Λ CDM model, CMB temperature fluctuations measurements from Planck and ACT + WMAP indicate S_8 values of 0.834 ± 0.016 [76] and 0.840 ± 0.030 [80], respectively. On the other hand, the value of S_8 inferred by a host of weak lensing and galaxy clustering measurements is typically lower than the CMB-inferred values, ranging between 0.703 to 0.782: examples of surveys reporting lower values of S_8 include CFHTLenS [81], KiDS-450 [82], KiDS-450 + 2dFLenS [83], KiDS + VIKING-450 (KV450) [84], DES-Y1 [85], KV450 + BOSS [86], KV450 + DES-Y1 [87,88], a re-analysis of the BOSS galaxy power spectrum [89], KiDS-1000 [90], and KiDS-1000 + BOSS + 2dFLenS [91]. Planck Sunyaev-Zeldovich cluster counts also infer a rather low value of $S_8 = 0.774 \pm 0.034$ [92]. To balance the discussion, it is also worth remarking that KiDS-450 + GAMA [93] and HSC SSP [94] indicate higher values of S_8 , of $0.800^{+0.029}_{-0.027}$ and $0.804^{+0.032}_{-0.029}$, respectively. Also, combining data from CMB, RSD, X-ray, and SZ cluster counts, [95] found $S_8 = 0.841 \pm 0.038$. From our overall results, summarized in Fig. 2, it can be noticed that our model-independent analyses are fully compatible with the Planck Λ CDM cosmology (prediction quantified by the black line in Fig. 2). Because our approach does not assume any fiducial cosmology, the error bar estimate in S_8 is degenerate. Due to this,

our model-independent estimates are also compatible with some weak lensing and galaxy clustering measurements.

Now, let us investigate the cosmic evolution of the growth index $\gamma(z)$. First, let us analyze and quantify its evolution as described by the definition given in Eq. (3). Figure 4 on the left panel shows $\gamma(z)$ at late times inferred from the $f(z)$ data in combination with the Pantheon sample. It is important to remember that the Pantheon sample is used to reconstruct the function $\Omega_m(z)$. The black line represents the prediction in GR theory. We find that γ is still statistically compatible with GR. When evaluated at the present time, we find $\gamma(z = 0) = 0.465 \pm 0.140$ at 1σ CL.

On the other hand, following [96], one can write the growth index γ as a function of $[f\sigma_8]$ in the form

$$\gamma(a) = \frac{\ln\left(\frac{[f\sigma_8](a)}{\int_0^a dx \frac{[f\sigma_8](x)}{x}}\right)}{\ln\left(\frac{a [f\sigma_8](a)^2}{3 \int_0^a dx [f\sigma_8](x) \int_0^x dy \frac{[f\sigma_8](y)}{y}}\right)}. \tag{16}$$

The main advantage of the above equation is that it only requires $[f\sigma_8](a)$ data to describe $\gamma(a)$. In this way, we apply our data compilation, displayed in Table 2, in this equation and show our results in the right panel of Fig. 4. When evaluated at the present time, we find $\gamma(z = 0) = 0.571 \pm 0.046$ at

1σ CL. Note that both the data set and the statistical approach developed here are different from the analyses presented in [96]. Although both reconstruction processes on $\gamma(z)$ are compatible with GR, it is interesting to note that data predictions show a different tendency, while $f(z)$ data predict a behavior above the value $\gamma = 6/11$, for $z > 0.3$, the $[f\sigma_8](z)$ data sample predicts a behavior below $\gamma = 6/11$. Despite this, all analyses displayed here are compatible with GR. That is, in short, we do not find any deviation from standard cosmology predictions.

It is worth commenting the growth rate tension reported in the literature in light of recent statistical analyses, considering assumptions that could solve the Hubble and the growth rate tensions simultaneously.

A class of modified gravity theories that allows the Newton's gravitational constant to evolve, i.e. $G = G(z)$ evolves with z , can solve at the same time both the Hubble and growth rate tensions, as shown by [97, 98]. In [99], parametrizing an evolving gravitational constant, the authors found no tension with the RSD data and the Planck- Λ CDM model. Additionally, using an updated $f\sigma_8$ data set, [100] shows that analysing a subsample of the 20 most recently published data the tension in $f\sigma_8$ disappears, and the GR theory is favoured over modified gravity theories.

On the other hand, combining weak lensing, real space clustering and RSD data, [101] found a substantial increase in the growth tension: from 3.5σ considering only $f\sigma_8$ data to 6σ when taking into account also the E_g data.

As a criterion for comparison, we look for previous studies in the growth rate tension using the GP reconstruction. In [102], using $f\sigma_8$ data, the authors did not find any tension when no prior in H_0 is used in the analyses, which agrees with our results because no H_0 prior was assumed here. In [103], the authors consider evolving dark energy models and show that, for these models, the growth rate tension between dynamical probe data and CMB constraints increases. More recently [104], using different kernels for the GP reconstruction and two methodologies to obtain the hyperparameters, discovered that the growth rate tension arises for specific redshift intervals and kernels.

Gaussian reconstruction is a powerful tool that allows to reconstruct functions from observational data without prior assumptions. However, it has the disadvantage that the reconstructed functions exhibit large uncertainties, as the case studied here where we have few data with large errors (see Tables 1 and 2). For example in [105], using only a $f\sigma_8$ data set, the authors found no tension in the growth rate, but one observes that the confidence regions are large enough to encompass different cosmological models. To avoid this inconvenience, the way adopted in the literature is to combine diverse cosmological probes or assume specific priors. From our results, and other statistical analyses like those in [102, 104], we can say that in the future, with more astronom-

ical data measured with less uncertainty, the GP methodology may indeed solve the growth rate tension.

4.1 Consistency tests in Λ CDM

It is important to perform consistency tests, comparing our results with the predictions of the Λ CDM model. This time we search for S_8 and σ_8 but following a different approach. In fact, we now perform a Bayesian analysis with both data sets presented in the Tables 1 and 2 using the Markov chain Monte Carlo (MCMC) method to analyze the set of parameters $\theta_i = \{\Omega_m, \sigma_8\}$, and building the posterior probability distribution function

$$p(D|\theta) \propto \exp\left(-\frac{1}{2}\chi^2\right), \quad (17)$$

where χ^2 is chi-squared function. The goal of any MCMC approach is to draw M samples θ_i from the general posterior probability density

$$p(\theta_i, \alpha|D) = \frac{1}{Z} p(\theta, \alpha) p(D|\theta, \alpha), \quad (18)$$

where $p(\theta, \alpha)$ and $p(D|\theta, \alpha)$ are the prior distribution and the likelihood function, respectively. Here, the quantities D and α are the set of observations and possible nuisance parameters. The quantity Z is a normalization factor. In order to constrain the baseline θ_i , we assume a uniform prior such that: $\Omega_{m,0} \in [0.1, 0.5]$ and $\sigma_{8,0} \in [0.5, 1.0]$.

We perform the statistical analysis based on the *emcee* [106] code along with *GetDist* [107] to analyze our chains. We follow the Gelman-Rubin convergence criterion [108], checking that all parameters in our chains had excellent convergence.

Figure 5 shows the posterior distribution in the parameter space $\Omega_m - \sigma_8$ (left panel) and $\Omega_m - S_8$ (right panel) at 1σ and 2σ CL for $[f\sigma_8](z)$ and $[f\sigma_8](z) + f(z)$ data set, respectively. For Λ CDM model, we find $\Omega_{m,0} = 0.292 \pm 0.061$, $\sigma_{8,0} = 0.798 \pm 0.040$ and $S_{8,0} = 0.788 \pm 0.055$ at 1σ CL from $[f\sigma_8](z)$ only. When performing the joint analyses $[f\sigma_8](z) + f(z)$, we find $\Omega_{m,0} = 0.274 \pm 0.029$, $\sigma_{8,0} = 0.809 \pm 0.029$ and $S_{8,0} = 0.773 \pm 0.033$ at 1σ CL (for recent analyses see, e.g. [109–111]).

As well known, there is a tension for low- z measurements of growth data, and it is weaker than the Planck- Λ CDM predictions (see [21, 22] and reference therein for a review). Our results here also confirm that growth rate data based in our compilation and criteria also predict a suppression on the amplitude of the matter density perturbation at low z due the low Ω_m estimation in comparison with that from the Planck- Λ CDM baseline. Despite obtaining a low $\Omega_{m,0}$ best-fit value in our analyses, including the error estimates our results are in agreement with the Planck CMB cosmological parameters at 1σ CL.

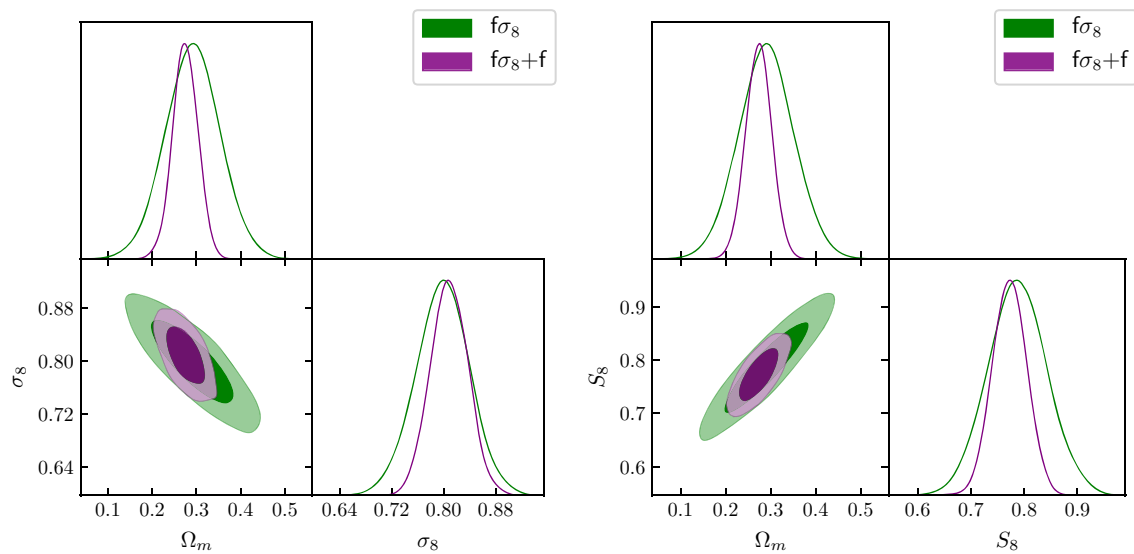


Fig. 5 1D and 2D posterior distributions for $[f\sigma_8](z)$ and $[f\sigma_8](z) + f(z)$ data at 1σ and 2σ CL. Left panel: contour diagram on the plane $\Omega_m - \sigma_8$. Right panel: contour diagram on the plane $\Omega_m - S_8$

5 Final remarks

The study of the large-scale matter clustering in the universe is attracting interest of the scientific community due to valuable information encoded in the growth rate of cosmic structures, useful to discriminate between the standard model of cosmology and alternative scenarios. In this work we construct, using the GP algorithm, the cosmic evolution of the functions $\sigma_8(z)$, $S_8(z)$, and $\gamma(z)$ using sets of measurements of $f(z)$, $[f\sigma_8](z)$, and $E(z)$ (see Tables 1 and 2, and [79]).

According to the current literature, measurements of the cosmological parameter $S_8(z=0)$ provided by early (using CMB) and late (through galaxy clustering at $z \lesssim 2$) cosmological tracers reveal some discrepancy between them, suggesting somehow that the process of cosmic structures growth could be different. Although this tension could be due to unknown – or uncalibrated – systematics, it is worthwhile to investigate the possibility of new physics beyond the standard model. This motivate us to construct the cosmic evolution of $\sigma_8^q(z)$ first, and then $S_8(z)$, using available data. All our results show a good concordance, at less than 2σ CL, with the corresponding predictions derived from the standard cosmological model, i.e. the flat Λ CDM.

In the near future, we expect several percent measurements of the expansion history of the universe, as well as of the cosmic growth rate, in a large set of experiments, e.g., through maps of the universe obtained by the Euclid satellite [112], or measuring the peculiar motions of galaxies using Type Ia supernovae from LSST [113], RSD with DESI [114]. Additionally, we will have the SKA telescopes performing BAO surveys and measuring weak gravitational lensing using

21 cm intensity mapping [115, 116]. All of these efforts will either reveal a systematic cause or harden the current tension in the growth rate measurements. Then, the methodology and results presented here can be significantly improved with new and precise measurements. Therefore, we believe that future perspectives in obtaining estimates of S_8 minimally model-dependent with cosmic growth rate measurements can shed new light on the current S_8 tension.

Acknowledgements FA and AB thank CAPES and CNPq for the grants under which this work was carried out. RCN acknowledges financial support from the Fundação de Amparo à Pesquisa do Estado de São Paulo (FAPESP, São Paulo Research Foundation) under the project no. 2018/18036-5.

Data Availability Statement This manuscript has no associated data or the data will not be deposited. [Authors' comment: The data underlying this article will be shared on request to the corresponding author.]

Open Access This article is licensed under a Creative Commons Attribution 4.0 International License, which permits use, sharing, adaptation, distribution and reproduction in any medium or format, as long as you give appropriate credit to the original author(s) and the source, provide a link to the Creative Commons licence, and indicate if changes were made. The images or other third party material in this article are included in the article's Creative Commons licence, unless indicated otherwise in a credit line to the material. If material is not included in the article's Creative Commons licence and your intended use is not permitted by statutory regulation or exceeds the permitted use, you will need to obtain permission directly from the copyright holder. To view a copy of this licence, visit <http://creativecommons.org/licenses/by/4.0/>.

Funded by SCOAP³. SCOAP³ supports the goals of the International Year of Basic Sciences for Sustainable Development.

References

1. A. Pezzotta et al., *A&A* **604**, A33 (2017). [arXiv:1612.05645](https://arxiv.org/abs/1612.05645)
2. M. Aubert et al., *MNRAS* **513**, 186 (2022) <https://doi.org/10.48550/arXiv.2007.09013>
3. J.E. Bautista et al., *MNRAS* **500**, 736 (2021). [arXiv:2007.08993](https://arxiv.org/abs/2007.08993)
4. P.C. Aghanim, Y. Akrami, M. Ashdown, J. Aumont, C. Baccigalupi, M. Ballardini, A.J. Banday, R.B. Barreiro, N. Bartolo, S. Basak, K. Benabed, J. Bernard, M. Bersanelli, P. Bielewicz, J.R. Bond, J. Borrill, F.R. Bouchet, F. Boulanger, M. Bucher, C. Burigana, E. Calabrese, J. Cardoso, J. Carron, A. Challinor, H.C. Chiang, L.P. Colombo, C. Combet, F. Couchot, B.P. Crill, F. Cuttaia, P. Bernardis, A.D. Rosa, G.D. Zotti, J. Delabrouille, J.M. Delouis, E.D. Valentino, J.M. Diego, O. Dor'e, M. Douspis, A. Ducout, X. Dupac, G.P. Efstathiou, F. Elsner, T.A. Ensslin, H.K. Eriksen, E. Falgarone, Y.T. Fantaye, F. Finelli, M. Frailis, A.A. Fraisse, E. Franceschi, A.V. Frolov, S. Galeotta, S. Galli, K. Ganga, R.T. G'enoza-Santos, M. Gerbino, T. Ghosh, J. Gonz'alez-Nuevo, K.M. G'orski, S. Gratton, A. Gruppuso, J.E. Gudmundsson, W. Handley, F.K. Hansen, S. Henrot-Versill'e, D. Herranz, E. Hivon, Z. Huang, A.H. Jaffe, W.C. Jones, A. Karacki, E. Keihanen, R. Keskitalo, K. Kiiveri, J. Kim, T. Kisner, N. Krachmalnicoff, M. Kunz, H. Kurki-Suonio, G. Lagache, J. Lamarre, A.N. Lasenby, M. Lattanzi, C.R. Lawrence, F. Levrier, M. Liguori, P.B. Lilje, V. Lindholm, M. L'opez-Caniego, Y. Ma, J. Mac'ias-P'erez, G. Maggio, D. Maino, N. Mandolesi, A. Mangilli, P.G. Martin, E. Mart'inez-Gonz'alez, S. Matarrese, N. Mauri, J.D. McEwen, A. Melchiorri, A. Mennella, M. Migliaccio, M. Miville-Desch'enes, D. Molinari, A. Moneti, L. Montier, G. Morgante, A. Moss, S. Mottet, P. Natoli, L. Pagano, D. Paoletti, B. Partridge, G. Patanchon, G., Patrizii, L., Perdureau, F. Perrotta, V. Pettorino, F. Piacentini, J. Puget, J.P. Rachen, M. Reinecke, M. Remazeilles, A. Renzi, G.M. Rocha, G.M. Roudier, L. Salvati, M. Sandri, M. Savelainen, D. Scott, C. Sirignano, G. Sirri, L.D. Spencer, R. Sunyaev, A. Suur-Uski, J. Tauber, D. Tavagnacco, M. Tenti, L. Toffolatti, M. Tomasi, M. Tristram, T. Trombetti, J. Valiviita, F. Vansyngel, B.V. Tent, L. Vibert, P. Vielva, F. Villa, N. Vittorio, B.D. Wandelt, I.K. Wehus, A. Zonca *A&A* **641**, A6 (2020). <https://doi.org/10.1051/0004-6361/201833910>
5. F. Avila, A. Bernui, R.C. Nunes, E. de Carvalho, C.P. Novaes, *MNRAS* **509**, 2994 (2022). [arXiv:2111.08541](https://arxiv.org/abs/2111.08541)
6. M. Bilicki, M. Chodorowski, T. Jarrett, G.A. Mamon, *ApJ* **741**, 31 (2011). [arXiv:1102.4356](https://arxiv.org/abs/1102.4356)
7. S.S. Boruah, M.J. Hudson, G. Lavaux, *MNRAS* **498**, 2703 (2020). [arXiv:1912.09383](https://arxiv.org/abs/1912.09383)
8. K. Said, M. Colless, C. Magoulas, J.R. Lucey, M.J. Hudson, *MNRAS* **497**, 1275 (2020). [arXiv:2007.04993](https://arxiv.org/abs/2007.04993)
9. F. Avila, A. Bernui, E. de Carvalho, C.P. Novaes, The growth rate of cosmic structures in the local Universe with the ALFALFA survey. *Monthly Not. R. Astron. Soc.* **505**(3), 3404–3413 (2021). <https://doi.org/10.1093/mnras/stab1488>
10. L. Perenon, S. Ilic, R. Maartens, A. de la Cruz-Dombriz, Improvements in cosmological constraints from breaking growth degeneracy. *Astron. Astrophys.* **642**, A116 (2020). <https://doi.org/10.1051/0004-6361/202038409>
11. N. Kaiser, *MNRAS* **227**, 1 (1987)
12. F. Avila, C.P. Novaes, A. Bernui, E. de Carvalho, *JCAP* **2018**, 041 (2018). [arXiv:1806.04541](https://arxiv.org/abs/1806.04541)
13. F. Avila, C.P. Novaes, A. Bernui, E. de Carvalho, J.P. Nogueira-Cavalcante, *MNRAS* **488**, 1481 (2019). [arXiv:1906.10744](https://arxiv.org/abs/1906.10744)
14. B. Pandey, S. Sarkar, *MNRAS* **498**, 6069 (2020). [arXiv:2002.08400](https://arxiv.org/abs/2002.08400)
15. B. Pandey, S. Sarkar, *JCAP* **2021**, 019 (2021). [arXiv:2103.11954](https://arxiv.org/abs/2103.11954)
16. E. De Carvalho, A. Bernui, H.S. Xavier, C.P. Novaes, Baryon acoustic oscillations signature in the three-point angular correlation function from the SDSS-DR12 quasar survey. *Monthly Not. R. Astron. Soc.* **492**(3), 4469–4476 (2020). <https://doi.org/10.1093/mnras/staa119>
17. E. de Carvalho, A. Bernui, F. Avila, C.P. Novaes, J.P. Nogueira-Cavalcante, *A&A* **649**, A20 (2021). [arXiv:2103.14121](https://arxiv.org/abs/2103.14121)
18. G. d'Amico et al., *JCAP* **2020**, 005 (2020). [arXiv:1909.05271](https://arxiv.org/abs/1909.05271)
19. O.H. Philcox, M.M. Ivanov, M. Simonović, M. Zaldarriaga, *J. Cosmol. Astropart. Phys.* **2020**, 032 (2020)
20. C. García-García et al., *JCAP* **2021**, 030 (2021). [arXiv:2105.12108](https://arxiv.org/abs/2105.12108)
21. E. Di Valentino et al., *Astropart. Phys.* **131**, 102604 (2021)
22. L. Perivolaropoulos, F. Skara, Challenges for λ cdm: an update. (2021). [arXiv:2105.05208](https://arxiv.org/abs/2105.05208)
23. L. Huang, Z. Huang, H. Zhou, Z. Li, *arXiv e-prints* (2021). [arXiv:2110.08498](https://arxiv.org/abs/2110.08498)
24. R.C. Nunes, S. Vagnozzi, *MNRAS* **505**, 5427–5437 (2021)
25. L. Wang, P.J. Steinhardt, *ApJ* **508**, 483 (1998). [arXiv:astro-ph/9804015](https://arxiv.org/abs/astro-ph/9804015)
26. L. Amendola, C. Quercellini, *Phys. Rev. Lett.* **92**, 181102 (2004). [arXiv:astro-ph/0403019](https://arxiv.org/abs/astro-ph/0403019)
27. E. de Carvalho, A. Bernui, F. Avila, C.P. Novaes, J.P. Nogueira-Cavalcante, BAO angular scale at $z_{\text{eff}} = 0:11$ with the SDSS blue galaxies. *Astron. Astrophys.* **649**, A20 (2021). <https://doi.org/10.1051/0004-6361/202039936>
28. E.V. Linder, R.N. Cahn, *Astropart. Phys.* **28**, 481 (2007). [arXiv:astro-ph/0701317](https://arxiv.org/abs/astro-ph/0701317)
29. R.C. Batista, *Phys. Rev. D* **89**, 123508 (2014). [arXiv:1403.2985](https://arxiv.org/abs/1403.2985)
30. G.A. Marques, A. Bernui, *JCAP* **2020**, 052 (2020). [arXiv:1908.04854](https://arxiv.org/abs/1908.04854)
31. A.G. Riess, S.A. Rodney, D. Scolnic, D.L. Shafer, L. Strolger, H.C. Ferguson, M. Postman, O. Graur, D. Maoz, S.W. Jha, B. Mobasher, S. Casertano, B. Hayden, A. Molino, J. Hjorth, P.M. Garnavich, D.O. Jones, R.P. Kirshner, A.M. Koekemoer, N.A. Grogin, G.B. Brammer, S. Hemmati, M.E. Dickinson, P.M. Challis, S.G. Wolff, K.I. Clubb, A.V. Filippenko, H. Nayyeri, U. Vivian, D.C. Koo, S.M. Faber, D.D. Kocevski, L.D. Bradley, D. Coe, Type Ia Supernova Distances at Redshift > 1.5 from the Hubble Space Telescope Multi-cycle Treasury Programs: The Early-Expansion Rate. *Astrophys. J.* **853**, 126 (2018). <https://doi.org/10.3847/1538-4357/aaa5a9>
32. S. Basilakos, *Int. J. Mod. Phys. D* **21**, 1250064 (2012). [arXiv:1202.1637](https://arxiv.org/abs/1202.1637)
33. R.C. Nunes, J.E.M. Barboza, E.M.C. Abreu, J.A. Neto, *JCAP* **08**, 051 (2016). [arXiv:1509.05059](https://arxiv.org/abs/1509.05059)
34. P. Bessa, M. Campista, A. Bernui, *EPJC* **82**, 506 (2022). [arXiv:2112.00822](https://arxiv.org/abs/2112.00822)
35. E. Hawkins et al., *MNRAS* **346**, 78 (2003). [arXiv:astro-ph/0212375](https://arxiv.org/abs/astro-ph/0212375)
36. L. Guzzo et al., *Nature* **451**, 541 (2008). [arXiv:0802.1944](https://arxiv.org/abs/0802.1944)
37. C. Blake, I.K. Baldry, Bland-J. Hawthorn, L. Christodoulou, M. Colless, C.J. Conselice, S.P. Driver, A.M. Hopkins, J. Liske, J.S. Loveday, P. Norberg, J.A. Peacock, G.B. Poole, A.S. Robotham, Galaxy And Mass Assembly (GAMA): improved cosmic growth measurements using multiple tracers of large-scale structure. *Monthly Not. Roy. Astron. Soc.* **436**, 3089–3105 (2013). <https://doi.org/10.1093/mnras/stt1791>
38. C. Blake et al., *MNRAS* **415**, 2876 (2011). [arXiv:1104.2948](https://arxiv.org/abs/1104.2948)
39. M. Tegmark et al., *Phys. Rev. D* **74**, 123507 (2006). [arXiv:astro-ph/0608632](https://arxiv.org/abs/astro-ph/0608632)

40. N.P. Ross, J.D. Ângela, T. Shanks, D. Wake, R.D. Cannon, A. Edge, R. Nichol, P.J. Outram, M. Colless, W.J. Couch, S.M. Croom, R.D. Propris, M.J. Drinkwater, D.J. Eisenstein, J.S. Loveday, K.A. Pimblett, I. Roseboom, D.P. Schneider, R. Sharp, P.M. Weilbacher, The 2dF-SDSS LRG and QSO Survey: the LRG 2-point correlation function and redshift-space distortions. *Monthly Not. Roy. Astrono. Soc.* **381**, 573–588 (2007). <https://doi.org/10.1111/j.1365-2966.2007.12289.x>
41. J. da Ângela et al., *MNRAS* **383**, 565 (2008). [arXiv:astro-ph/0612401](https://arxiv.org/abs/astro-ph/0612401)
42. S.J. Turnbull et al., *MNRAS* **420**, 447 (2012). [arXiv:1111.0631](https://arxiv.org/abs/1111.0631)
43. I. Achatouv, C. Blake, P. Carter, J. Koda, F. Beutler, *Phys. Rev. D* **95**, 083502 (2017). [arXiv:1606.03092](https://arxiv.org/abs/1606.03092)
44. F. Beutler et al., *MNRAS* **423**, 3430 (2012). [arXiv:1204.4725](https://arxiv.org/abs/1204.4725)
45. M. Feix, A. Nusser, E. Branchini, *Phys. Rev. Lett.* **115**, 011301 (2015). [arXiv:1503.05945](https://arxiv.org/abs/1503.05945)
46. S. Alam et al., *MNRAS* **470**, 2617 (2017). [arXiv:1607.03155](https://arxiv.org/abs/1607.03155)
47. A.G. Sánchez et al., *MNRAS* **440**, 2692 (2014). [arXiv:1312.4854](https://arxiv.org/abs/1312.4854)
48. C. Blake et al., *MNRAS* **425**, 405 (2012). [arXiv:1204.3674](https://arxiv.org/abs/1204.3674)
49. S. Nadathur, P.M. Carter, W.J. Percival, H.A. Winther, J.E. Bautista, *Phys. Rev. D* **100**, 023504 (2019). [arXiv:1904.01030](https://arxiv.org/abs/1904.01030)
50. C.-H. Chuang et al., *MNRAS* **461**, 3781 (2016). [arXiv:1312.4889](https://arxiv.org/abs/1312.4889)
51. M.J. Wilson, *arXiv e-prints* (2016). [arXiv:1610.08362](https://arxiv.org/abs/1610.08362)
52. G.-B. Zhao et al., *MNRAS* **482**, 3497 (2019). [arXiv:1801.03043](https://arxiv.org/abs/1801.03043)
53. T. Okumura et al., *PASJ* **68**, 38 (2016). [arXiv:1511.08083](https://arxiv.org/abs/1511.08083)
54. C.E. Rasmussen, C.K.I. Williams, *Gaussian Processes for Machine Learning* (Springer, Berlin, 2006)
55. M. Seikel, C. Clarkson, M. Smith, *JCAP* **2012**, 036 (2012). [arXiv:1204.2832](https://arxiv.org/abs/1204.2832)
56. A. Shafieloo, A.G. Kim, E.V. Linder, *Phys. Rev. D* **85**, 123530 (2012). [arXiv:1204.2272](https://arxiv.org/abs/1204.2272)
57. J.E. González, J.S. Alcaniz, J.C. Carvalho, *JCAP* **2016**, 016 (2016). [arXiv:1602.01015](https://arxiv.org/abs/1602.01015)
58. J.E. Gonzalez, *Phys. Rev. D* **96**, 123501 (2017). [arXiv:1710.07656](https://arxiv.org/abs/1710.07656)
59. M.-J. Zhang, H. Li, *EPJC* **78**, 460 (2018). [arXiv:1806.02981](https://arxiv.org/abs/1806.02981)
60. G.A. Marques et al., *JCAP* **2019**, 019 (2019). [arXiv:1812.08206](https://arxiv.org/abs/1812.08206)
61. F. Renzi, A. Silvestri, *arXiv e-prints* (2020). [arXiv:2011.10559](https://arxiv.org/abs/2011.10559)
62. D. Benisty, *Phys. Dark Universe* **31**, 100766 (2021). [arXiv:2005.03751](https://arxiv.org/abs/2005.03751)
63. A. Bonilla, S. Kumar, R.C. Nunes, S. Pan, *arXiv e-prints* (2021). [arXiv:2102.06149](https://arxiv.org/abs/2102.06149)
64. A. Bonilla, S. Kumar, R.C. Nunes, *Eur. Phys. J. C* **81**, 127 (2021). [arXiv:2011.07140](https://arxiv.org/abs/2011.07140)
65. E. Ó. Colgáin, M.M. Sheikh-Jabbari, *arXiv e-prints* (2021). [arXiv:2101.08565](https://arxiv.org/abs/2101.08565)
66. W. Sun, K. Jiao, T.-J. Zhang, *arXiv e-prints* (2021). [arXiv:2105.12618](https://arxiv.org/abs/2105.12618)
67. F. Renzi, N. B. Hogg, W. Giarè, *arXiv e-prints* (2021). [arXiv:2112.05701](https://arxiv.org/abs/2112.05701)
68. C. Bengaly, *arXiv e-prints* (2021). [arXiv:2111.06869](https://arxiv.org/abs/2111.06869)
69. C. Escamilla-Rivera, J.L. Said, J. Mifsud, *JCAP* **2021**, 016 (2021)
70. S. Dhawan, J. Alsing, S. Vagnozzi, *MNRASL* **506**, L1–L5 (2021)
71. P. Mukherjee, N. Banerjee, Nonparametric reconstruction of interaction in the cosmic dark sector. *Phys. Rev. D.* **103**(12), 123530 (2021). <https://doi.org/10.1103/PhysRevD.103.123530>
72. R.E. Keeley, A. Shafieloo, G.-B. Zhao, J.A. Vazquez, H. Koo, *ApJ* **161**, 151 (2021)
73. B. L’Huillier, A. Shafieloo, D. Polarski, A.A. Starobinsky, *MNRAS* **494**, 819–826 (2020)
74. J. Ruiz-Zapatero, C. García-García, D. Alonso, P.G. Ferreira, R.D.P. Grumitt, *MNRAS* **512**, 1967 (2022). [arXiv:2201.07025](https://arxiv.org/abs/2201.07025)
75. L. Perenon et al., *Phys. Dark Universe* **34**, 100898 (2021). [arXiv:2105.01613](https://arxiv.org/abs/2105.01613)
76. Planck, N. Aghanim et al., *A&A* **641**, A6 (2020). [arXiv:1807.06209](https://arxiv.org/abs/1807.06209)
77. V. Sahni, A. Shafieloo, A.A. Starobinsky, Two new diagnostics of dark energy. *Phys. Rev. D.* **78**(10), 103502 (2008). <https://doi.org/10.1103/PhysRevD.78.103502>
78. D.M. Scolnic et al., *ApJ* **859**, 101 (2018). [arXiv:1710.00845](https://arxiv.org/abs/1710.00845)
79. B.S. Haridasu, V.V. Luković, M. Moresco, N. Vittorio, *JCAP* **2018**, 015 (2018). [arXiv:1805.03595](https://arxiv.org/abs/1805.03595)
80. ACT, S. Aiola et al., *JCAP* **12**, 047 (2020). [arXiv:2007.07288](https://arxiv.org/abs/2007.07288)
81. S. Joudaki et al., *MNRAS* **465**, 2033 (2017). [arXiv:1601.05786](https://arxiv.org/abs/1601.05786)
82. S. Joudaki et al., *MNRAS* **471**, 1259 (2017). [arXiv:1610.04606](https://arxiv.org/abs/1610.04606)
83. S. Joudaki et al., *MNRAS* **474**, 4894 (2018). [arXiv:1707.06627](https://arxiv.org/abs/1707.06627)
84. H. Hildebrandt et al., *A&A* **633**, A69 (2020). [arXiv:1812.06076](https://arxiv.org/abs/1812.06076)
85. DES, M.A. Troxel et al., *Phys. Rev. D* **98**, 043528 (2018). [arXiv:1708.01538](https://arxiv.org/abs/1708.01538)
86. T. Tröster et al., *A&A* **633**, L10 (2020). [arXiv:1909.11006](https://arxiv.org/abs/1909.11006)
87. S. Joudaki et al., *A&A* **638**, L1 (2020). [arXiv:1906.09262](https://arxiv.org/abs/1906.09262)
88. M. Asgari et al., *A&A* **634**, A127 (2020). [arXiv:1910.05336](https://arxiv.org/abs/1910.05336)
89. M.M. Ivanov, M. Simonović, M. Zaldarriaga, *JCAP* **05**, 042 (2020). [arXiv:1909.05277](https://arxiv.org/abs/1909.05277)
90. KiDS, M. Asgari et al., *A&A* **645**, A104 (2021). [arXiv:2007.15633](https://arxiv.org/abs/2007.15633)
91. C. Heymans et al., *A&A* **646**, A140 (2021). [arXiv:2007.15632](https://arxiv.org/abs/2007.15632)
92. Planck, P.A.R. Ade et al., *A&A* **594**, A24 (2016). [arXiv:1502.01597](https://arxiv.org/abs/1502.01597)
93. E. van Uitert et al., *MNRAS* **476**, 4662 (2018). [arXiv:1706.05004](https://arxiv.org/abs/1706.05004)
94. T. Hamana et al., *Publ. Astron. Soc. Jpn.* **72**, 16 (2020). [arXiv:1906.06041](https://arxiv.org/abs/1906.06041)
95. A. Blanchard, S. Ilić, *A&A* **656**, A75 (2021). [arXiv:2104.00756](https://arxiv.org/abs/2104.00756)
96. R. Arjona, S. Nesseris, *JCAP* **2020**, 042–042 (2020)
97. L. Perenon, J. Bel, R. Maartens, A. de la Cruz-Dombriz, *JCAP* **2019**, 020 (2019). [arXiv:1901.11063](https://arxiv.org/abs/1901.11063)
98. V. Marra, L. Perivolaropoulos, *Phys. Rev. D* **104**, L021303 (2021). [arXiv:2102.06012](https://arxiv.org/abs/2102.06012)
99. S. Nesseris, G. Pantazis, L. Perivolaropoulos, *Phys. Rev. D* **96**, 023542 (2017). [arXiv:1703.10538](https://arxiv.org/abs/1703.10538)
100. L. Kazantzidis, L. Perivolaropoulos, *Phys. Rev. D* **97**, 103503 (2018). [arXiv:1803.01337](https://arxiv.org/abs/1803.01337)
101. F. Skara, L. Perivolaropoulos, *Phys. Rev. D* **101**, 063521 (2020). [arXiv:1911.10609](https://arxiv.org/abs/1911.10609)
102. E.-K. Li, M. Du, Z.-H. Zhou, H. Zhang, L. Xu, *MNRAS* **501**, 4452 (2021). [arXiv:1911.12076](https://arxiv.org/abs/1911.12076)
103. G. Alestas, L. Perivolaropoulos, *MNRAS* **504**, 3956 (2021). [arXiv:2103.04045](https://arxiv.org/abs/2103.04045)
104. M. Reyes, C. Escamilla-Rivera, *arXiv e-prints* (2022). [arXiv:2203.03574](https://arxiv.org/abs/2203.03574)
105. A. Quelle, A.L. Maroto, *EPJC* **80**, 369 (2020). [arXiv:1908.00900](https://arxiv.org/abs/1908.00900)
106. D. Foreman-Mackey, D.W. Hogg, D. Lang, J. Goodman, *Publ. Astron. Soc. Pac.* **125**, 306 (2013)
107. A. Lewis, *arXiv e-prints* (2019). [arXiv:1910.13970](https://arxiv.org/abs/1910.13970)
108. A. Gelman, D.B. Rubin, *Stat. Sci.* **7**, 457 (1992)
109. A.B. Rivera, J.E. García-Farieta, *Int. J. Mod. Phys. D* **28**, 1950118 (2019). [arXiv:1605.01984](https://arxiv.org/abs/1605.01984)
110. R.C. Nunes, A. Bernui, *EPJC* **80**, 1025 (2020). [arXiv:2008.03259](https://arxiv.org/abs/2008.03259)
111. D. Benisty, D. Staicova, *A&A* **647**, A38 (2021). [arXiv:2009.10701](https://arxiv.org/abs/2009.10701)
112. L. Amendola, S. Appleby, D. Bacon, et al. Cosmology and Fundamental Physics with the Euclid Satellite. *Living Rev. Relativ.* **16**, 6 (2013). <https://doi.org/10.12942/lrr-2013-6>
113. C. Howlett, A.S.G. Robotham, C.D.P. Lagos, A.G. Kim, *ApJ* **847**, 128 (2017)
114. N. Hamaus et al., *JCAP* **2020**, 023–023 (2020)
115. M. Santos et al., Advancing Astrophysics with the Square Kilometre Array (AASKA14) **19**, 019 (2015). [arXiv:1501.03989](https://arxiv.org/abs/1501.03989)
116. P. Bull et al., Advancing astrophysics with the square kilometre array (AASKA14). **24**, 024 (2015). [arXiv:1501.04088](https://arxiv.org/abs/1501.04088)