



Acta Palaeobotanica 54(2): 173–195, 2014  
DOI: 10.2478/acpa-2014-0011

# European Jurassic floras: statistics and palaeoenvironmental proxies

MARIA BARBACKA<sup>1,4,\*</sup>, EMESE BODOR<sup>2,3,\*</sup>, AGATA JARZYŃKA<sup>4</sup>, EVELYN KUSTATSCHER<sup>5,6</sup>,  
GRZEGORZ PACYNA<sup>7</sup>, MIHAI E. POPA<sup>8</sup>, GIOVANNI G. SCANU<sup>9</sup>, FRÉDÉRIC THÉVENARD<sup>10</sup>,  
and JADWIGA ZIAJA<sup>4</sup>

<sup>1</sup>Hungarian Natural History Museum, Botanical Department, H-1476 Budapest, P.O. Box 222, Hungary;  
e-mail: barbacka@bot.nhmus.hu

<sup>2</sup>Hungarian Geological and Geophysical Institute, Geological and Geophysical Collections, 1143 Budapest,  
Stefánia út 14, Hungary

<sup>3</sup>Eötvös Loránd University, Department of Palaeontology, 1117 Budapest, Pázmány Péter sétány 1/C,  
Hungary; e-mail: emesebodor@gmail.com

<sup>4</sup>W. Szafer Institute of Botany, Polish Academy of Sciences, Lubicz 46, 31-512 Kraków, Poland;  
e-mail: j.ziaja@botany.pl

<sup>5</sup>Naturmuseum Südtirol, Bindergasse 1, 39100 Bolzano/Bozen, Italy

<sup>6</sup>Department für Geo- und Umweltwissenschaften, Paläontologie und Geobiologie, Ludwig-Maximilians-  
Universität und Bayerische Staatssammlung für Paläontologie und Geobiologie, Richard-Wagner-Straße 10,  
80333 München, Germany; e-mail: Evelyn.Kustatscher@naturmuseum.it

<sup>7</sup>Department of Palaeobotany and Palaeoherbarium, Institute of Botany, Jagiellonian University,  
ul. Lubicz 46, 31-512 Kraków, Poland; e-mail: grzegorz\_pacyna@o2.pl

<sup>8</sup>University of Bucharest, Faculty of Geology and Geophysics, Laboratory of Palaeontology, 1, N. Balcescu  
Ave., 010041, Bucharest, Romania; e-mail: mihai@mepopa.com

<sup>9</sup>Department of Chemical and Geological Sciences, University of Cagliari, via Trentino 51, I-09127 Cagliari,  
Italy; e-mail: gioscanu@gmail.com

<sup>10</sup>UMR5276 CNRS, Laboratoire de Géologie de Lyon, Terre, Planètes et Environnement, Université Claude  
Bernard Lyon 1, 69622 Villeurbanne cedex, France; e-mail: Frederic.Thevenard@univ-lyon1.fr

Received 15 September 2014; accepted for publication 5 November 2014

**ABSTRACT.** The Jurassic floras of Europe show considerable diversity. To examine the extent of this diversity and its possible causes we used multivariate statistical methods (cluster analysis, PCA, NMDS) to compare all significant Jurassic floras in Europe. Data were based on 770 taxa from 46 fossiliferous occurrences (25 units) from France, Germany, Greenland, Hungary, Italy, Norway, Poland, Romania, Scotland, Serbia, Sweden, Switzerland, and the United Kingdom. Statistical analyses were applied at species level and genus level, and also performed for the major plant groups. The genus cladograms show affinities between different localities based on environmental factors, while the cladograms based on species affinities indicate only taxonomical correlations. The study shows that locality age does not seem to be of paramount importance for floral composition.

**KEYWORDS:** flora composition, autochthonous and allochthonous floras, cluster analysis, PCA, NMDS, Jurassic, Europe

## INTRODUCTION

In the last decades, as taxonomic studies of numerous Mesozoic localities have been completed, palaeoenvironmental reconstruction of

different floras/localities has become a focus of interest. Different methods have been applied to study plants' adaptation to environmental conditions and the mechanisms of plant distribution and migration. Methods include analyses of macromorphology and cuticular structure

\* These authors contributed equally to this article and share first co-authorship

(Barbacka et al. 2006, Pott & McLaughlin 2009, Steinhorsdottir et al. 2011), traditional quantitative methods (Knobloch & Mai 1986, Kostina & Herman 2013), comparisons between macro- and microfloras (Kustatscher et al. 2010), analyses of the affinities between palynomorphs and their “mother” plants or sporomorph ecogroups (Abbink et al. 2004), and considerations of plants’ environmental requirements based on statistical analyses (Spicer & Hill 1979, Rees et al. 2000, McElwain et al. 2007, Jasper et al. 2010, Barbacka 2011). Statistical analyses have also been used to compare floras on the global scale (Spicer & Hill 1979, Herman & Spicer 1997). These methods provide extensive information helpful in understanding the relationships between localities and taxa, and they can indicate possible migration pathways and distribution mechanisms, as is done for phytoprovinces (Vakhrameev 1991). Significant palaeogeographic and palaeoclimatic hypotheses have been proposed.

The aim of the present study was to compare fossil floras on a regional scale in Europe (except Russia) and to determine the most important factors influencing the similarities and dissimilarities between particular regions (i.e. palaeogeographical, temporal, environmental, and climatic factors), and in particular the degree to which the palaeoenvironment influenced the plant composition at the sites.

The study is based on literature data and on our unpublished data. Fortunately, in recent times some classic localities (France, Germany, Italy, Sweden, United Kingdom, some localities in Poland) have been taxonomically revised and re-examined according to the methodological standards of modern palaeobotany and supplemented by local environmental data. A number of new localities have been described (Serbia, some small Polish sites, Switzerland, Norway), and work on some localities is in progress (Hungary, Romania). For all localities, more or less comprehensive information on their palaeoenvironmental settings is available.

To date there has been no detailed study correlating different European floras of the Jurassic period except for a recent comparison of Middle Jurassic floras of Europe and northern palaeo-Africa that demonstrated dissimilarity in the floras of this period (Scanu et al. 2014). Such work is needed if we are to understand how uniform/diverse the floras of Europe were during the Jurassic, or to understand the

compositional differences between the various floras and/or time slices in relation to their environmental or latitudinal settings. Since the number of species and genera described from the different floras over the years is very high, only multivariate statistical methods can be used. This is the first study comparing the various macrofloras and relating them to their palaeoecological settings.

## MATERIAL AND METHODS

The database comprises 770 taxa from 46 Early, Middle and Late Jurassic localities in Europe (Table 1). For statistical reasons, floras with less than five well-defined species were not considered. The data are based mostly on classic and modern peer-reviewed works published up to 2013. For floras that were revised the latest list of taxa was used. Records from classic works which were not re-examined or only partly re-examined were used in their original form, supplemented by the new data. Because a large number of references are cited, they are given in tables (taxonomic references Table 2, environmental references Table 3) and are not repeatedly mentioned in the text. Records from France, Italy, Poland, Romania, and Greenland contain, besides published data, also unpublished data on taxa from revisions, most of them done by us. Taxa with uncertain determinations (“cf.”) were recorded in the database as definite. Indeterminable taxa (sp.) were included only when they were the only representatives of a given genus. In other cases undetermined species (e.g. “sp.”, “sp. A”) were omitted.

Outcrops of the same age and depositional setting in a given area were treated as single units and labelled as such; examples are Yorkshire (United Kingdom), Franken (Germany), Scania (Sweden), Hungary, some Late Jurassic localities in France, the Holy Cross Mts. (Poland), the Veneto area (Italy), and Serbia (see Table 3).

The database was prepared using MS Excel software in a 1/0 (presence-absence) matrix for species and genera. The full database from the studied localities is attached as a supplement ([http://botany.pl/ibwyd/acta\\_paleo/base1/act-p54\\_2\\_Barbacka.html](http://botany.pl/ibwyd/acta_paleo/base1/act-p54_2_Barbacka.html)).

The statistical and mathematical analyses employed the R program (R Development Core Team 2011). Sampling was affected by different factors at each locality (e.g. sample accessibility, size of outcrop, subjective selection of material, preservation); this should be borne in mind when interpreting the results. Rarefaction was not possible in this case as only binary data were available, without abundance data.

Statistical analyses:

1) Diversity indices. Alpha diversity (Bush & Bambach 2004) was calculated for all taxonomical groups in each locality. Both the total number of taxa and the alpha diversity of the localities and epochs were calculated. Alpha diversity provides important information about the locality but is strongly affected by differences in the manner of collecting fossils (open mines, dumps,

**Table 1.** Localities and locality units, with their depositional environments during the Jurassic of Europe

| Country     | Locality/environment |  |                      |  |  |   |                    |  |   |  |
|-------------|----------------------|--|----------------------|--|--|---|--------------------|--|---|--|
|             | Lower Jurassic (L)   |  |                      | Middle Jurassic (M)                                    |  |   | Upper Jurassic (U) |  |   |  |
|             | unit name            | localities   | depositional setting | unit name  | localities                                     | depositional setting                                      | unit name          | localities                             | depositional setting                            |  |
| Poland      | Holy Cross-L         | Studzianna Huta<br>Odrovaż Gromadzice<br>Chmielów<br>Podszkodzie | fluvial              | Grojec-M   | Grojec   | fluvial   | Wólka-U            | Wólka                                  | lagoon  |  |
|             | Vendée-L             | Causses basin<br>Deux-Sèvres Vendée<br>Hettange                  | lagoon – marine      | Causses-M<br>Mamers-M                                  | Causses<br>Mamers                              | lagoon<br>lagoon  | Jura-U             | Armaille<br>Creys<br>Orbagnoux<br>Jura | allochthonous lagoon – delta<br>– paralic basin |  |
| Romania     | Reșița-L             | Anina<br>Sirinia<br>Cristian<br>Holbav                           | fluvial              |  |  |   |                    |  |   |  |
| Hungary     | Mecsek-L             | Mecsek Mts.  | delta                |  |  |   |                    |  |   |  |
| Germany     | Franken-L            | Bayreuth<br>Nürnberg<br>Bamberg                                  | fluvial              |  |  |   | Solnhofen-U        | Solnhofen<br>Nusplingen<br>Brunn       | lagoon, marine                                  |  |
|             | Veneto-L             | Rovère di Velo<br>Rotzo<br>Veneto                                | allochthonous        | Sardegna-M   | Sardegna                                       | coastal fluvial   |                    |  |   |  |
| Norway      |                      |  |                      | Andoya-M   | Andoya   | fluvial   |                    |  |   |  |
| Greenland   | Scoresby-L           | Scoresby Sound   | delta                |  |  |   |                    |  |   |  |
|             |                      |  |                      | Yorkshire-M<br>Stonesfield-M<br>Berreraig-M<br>Brent-M | Yorkshire<br>Stonesfield<br>Berreraig<br>Brent | delta<br>coastal upland<br>allochthonous<br>allochthonous | Sutherland-U       | Sutherland                             | river, delta,<br>allochthonous                  |  |
| Serbia      | Stara Planina-L      | Stara Planina Mt.<br>Dobra<br>Ruj Mt.<br>Vrška Čuka              | fluvial/<br>delta    |  |  |   |                    |  |   |  |
| Sweden      | Scania-L             | Scania   | fluvial              |  |  |   |                    |  |   |  |
| Switzerland |                      |  |                      |  |  |   | Basel-U            | Basel                                  | lagoonal  |  |

**Table 2.** References for taxonomic data of all studied localities

| State          | Locality   | Age                                    | References  |
|----------------|--|--|---|
| France         | general  | Early Jurassic                         | Brongniart 1828–1837, 1849, Schimper 1869, Thévenard et al. 1995  |
|                | Vendée   | Early Jurassic                         | Saporta 1873–1891, Carpentier 1950, Corsin 1950, Barale 1987  |
|                | Causses  | Middle Jurassic                        | Philippe et al. 1998  |
|                | Mamers   | Middle Jurassic                        | Lemoigne 1968, Philippe et al. 1998   |
|                | Armaille<br>Creys<br>Orbagnoux<br>Jura           | Late Jurassic                          | Barale 1981   |
| Germany        | Bayreuth   | Early Jurassic                         | Schenk 1867, Weber 1968, Kirchner 1992, Gregor and Hauptmann 1998   |
|                | Nürnberg   | Early Jurassic                         | Schenk 1867, Gothan 1914, Gregor and Hauptmann 1998   |
|                | Bamberg  | Early Jurassic                         | Schenk 1867, Kräusel 1958, Kirchner 1992, Gregor and Hauptmann 1998   |
|                | Solnhofen  | Late Jurassic                          | Kuhn 1961, Barthel et al. 1990, Jung 1974, Kräusel 1943, Wellnhöfer 2008  |
|                | Nusplingen                                       | Late Jurassic                          | Dietls G. and Schweigert G. 2011  |
|                | Brunn  | Late Jurassic                          | Röper and Rothgaenger 1997  |
| Greenland      | Scoresby Sound                                   | Early Jurassic                         | Harris 1926, 1931, 1932a, b, 1935, 1937, 1946   |
| Hungary        | Mecsek Mts.                                      | Early Jurassic                         | Nagy 1961, Barbacka 1992, 1994a, b, 1997, 2000, 2001, 2002, 2009, 2011, Thévenard and Barbacka 2000, Wcisło-Luraniec and Barbacka 2000, Barbacka and Bodor 2008                           |
| Italy          | Rotzo/Veneto/<br>Rovere di Velo                  | Early Jurassic                         | De Zigno 1856–1868, 1873–1885, Grandori 1913a, b, Wesley 1956, 1958, 1966, 1974, Bartiromo and Barone Lumaga 2009   |
|                | Sardinia   | Middle Jurassic                        | Tornquist 1904, Krasser 1912, 1913, 1920, Edwards 1929, Comaschi Caria 1959, Dieni et al. 1983, Salard-Cheboldaef and Vozenin-Serra 1984, Scanu et al. 2012                               |
| Norway         | Andoya   |  | Manum et al. 1991, Bruun Christensen 1995   |
| Poland         | Grojec   | Middle Jurassic                        | Raciborski 1889, 1894, Reymanówna 1963, 1973, 1985, Wcisło-Luraniec, 1985, 1989, Jarzynka 2012  |
|                | Gromadzice                                       | Early Jurassic                         | Raciborski 1882, 1891a, b, 1892a, b, Makarewiczówna 1928, Harris 1931, Karaszewski 1965, Grabowska et al. 1970, Pacyna and Zdebska 2011   |
|                | Huta   | Early Jurassic                         | Barbacka et al. 2014  |
|                | Odrowąż  | Early Jurassic                         | Wcisło-Luraniec 1991, 1992, 2001, Reymanówna 1992, Reymanówna et al. 1987, Barbacka et al. 2007, 2010,  |
|                | Podszkodzie                                      | Early Jurassic                         | Makarewiczówna 1928, Samsonowicz 1929, Grabowska et al. 1970, Pacyna 2013   |
|                | Studzianna                                       | Early Jurassic                         | Barbacka et al. 2014  |
| Romania        | Reșița Basin                                     | Early Jurassic (Hettangian-Sinemurian) | Krasser 1915, Semaka 1962a, b, 1965, 1970, Givulescu 1992, 1997, 1998, Popa 1997a, 1998, 2000a, b, 2009, Popa and Van Konijnenburg-van Cittert 2006                                       |
| Scotland       | Bearreraig                                       | Middle Jurassic                        | Morton 1965   |
|                | Brent  | Middle Jurassic                        | Bruun Christensen 1995  |
|                | Sutherland                                       | Late Jurassic                          | Van der Burgh and Van Konijnenburg-van Cittert 1984, Van Konijnenburg-van Cittert and Van der Burgh 1989, Van Konijnenburg-van Cittert 2008   |
| Serbia         | Stara Planina Mt.<br>Dobra Ruj Mt.<br>Vrška Čuka | Early Jurassic                         | Djordjević-Milutinović 2010   |
| Sweden         | Scania   | Early Jurassic                         | Nathorst 1876, 1878a, b, c, Halle 1908, Lundblad 1950, Pott and McLaughlin 2009   |
| Switzerland    | Basel  | Late Jurassic                          | Van Konijnenburg-van Cittert and Meyer 1996   |
| United Kingdom | Stonesfield                                      | Middle Jurassic                        | Cleal and Rees 2003, Van Konijnenburg-van Cittert 2008  |
|                | Yorkshire  | Middle Jurassic                        | Seward 1900, Harris 1961, 1964, 1969, 1979, Harris and Millington 1974, Harris and Miller 1974, Hill 1985, Van Konijnenburg-van Cittert & Morgans 1999, Van Konijnenburg-van Cittert 2008 |

boreholes) and unequal numbers of taxa found in each flora. To make the data comparable, normed values for each locality were calculated: (1) is the value assigned to the plant group showing the highest diversity at a given locality, and (0) is the value assigned for an

absent plant group. Then the diversity of a particular plant group is assigned a numerical value between 0 and 1 (see Table 4).

2) Multivariate methods. Sample-centred (Q mode) community analytical methods were performed.

**Table 3.** References for depositional environments of particular floras

| Country        | Abbreviation    | References for environment                                 |
|----------------|-----------------|--|
| France         | Vendée-L        | Barale 1981  |
|                | Causses-M       | Bernier et al. 2014  |
|                | Mamers-M        | Bernier et al. 2014  |
|                | Jura-U          | Barale 1981  |
| Germany        | Franken-L       | Weber 1968, Gregor and Hauptmann 1998                      |
|                | Solnhofen-U     | Barthel et al. 1990  |
|                | Nussplingen     | Dietls and Schweigert 2011                                 |
|                | Brunn           | Röper and Rothgaenger 1997                                 |
| Greenland      | Scoresby-L      | Seward 1911  |
| Hungary        | Mecsek-L        | Nagy 1961, Püspöki et al. 2012                             |
| Italy          | Veneto-L        | Bartirromo and Barone Lumaga 2009, Scanu et al. 2012       |
|                | Sardegna-M      | Costamagna et al. 2007, Scanu et al. 2012, 2014            |
| Norway         | Brent-M         | Bruun Christensen 1995                                     |
|                | Andoya-M        | Manum et al. 1991  |
| Poland         | Holy Cross-L    | Pieńkowski 2004  |
|                | Grojec-M        | Jarzynka 2012  |
|                | Wólka-U         | Liszkowski 1972  |
| Romania        | Reșița-L        | Popa 2009  |
| Scotland       | Bearreraig-M    | Bateman et al. 2000, Dower et al. 2004                     |
|                | Sutherland-U    | van Konijnenburg-van Cittert and van der Burgh 1989, 1996  |
| Serbia         | Stara Planina-L | Haas et al. 2011   |
| Sweden         | Scania-L        | Ahlberg et al. 2003  |
| Switzerland    | Basel-U         | Gee et al 2003, Jank et al. 2006                           |
| United Kingdom | Stonesfield-M   | Cleal and Rees 2003  |
|                | Yorkshire-M     | Harris 1953, Van Konijnenburg-van Cittert and Morgans 1999 |

Multivariate methods were used for all studied localities.

2.1) Large amounts of data can be grouped according to their similarity (Hammer et al. 2001) using cluster analysis with Ward's method (Euclidean distance). In this method the clusters with lowest variance within groups are combined in pairs (Hammer & Harper 2006, Hatvani et al. 2011). Segregation may result from different factors such as the age of the floras, palaeogeographic region, or environmental factors. All of these factors, together with error caused by sampling or other human influences, should be taken into consideration in interpreting the results (Cascales-Miñana 2010, Kovács et al. 2012).

2.2) The data were also ordered along a continuum of taxonomical content (Hammer & Harper 2006). The results of such ordination can be interpreted as influenced by environmental factors. Among the ordination methods, PCA (principal component analysis) (Spicer & Hill 1979) has often been used in palaeontology. The axes are virtually combined from the presence and absence of all taxa occurring. The localities are placed in a low-dimensional space in a way that highly preserves the original distances between them. In this study the method could not be used for the basic data because the matrix is undetermined (the number of

taxa significantly exceeds the number of localities). The localities can be compared by PCA if  $\alpha$  diversity is used.

Correspondence analysis (CA) is widely used in grouping data having similar properties (e.g. Coiffard et al. 2008, Barbacka 2011) but we did not apply it here. CA maximizes the correspondence and not the variance among localities. CA values are calculated from variance and covariance matrixes, which would require abundance data; as mentioned, in the literature only presence-absence information is given.

2.3) Non-metric multidimensional scaling (NMDS) was used to illustrate the relationships between localities based on their degree of similarity. NMDS uses rank orders and can therefore be applied to a variety of types of data. The objective of this method is to reduce information from multiple dimensions (in our study, multiple localities) to two or three, so that they can be visualized and interpreted. NMDS is not an eigenvalue-eigenvector technique like principal components analysis or correspondence analysis. This means that an NMDS ordination can be rotated or centred to any desired configuration (Rabinowitz 1975, Holland 2008).

We chose to use three-dimensional visualisation for this study.

**Table 4.** Alpha diversity of different groups at different localities/units, normed against maximum diversity of the given group

|                 | Hepa-<br>tophytes | Lycophy-<br>tes | Horsetails | Ferns | Seed<br>Ferns | Cycads | Bennet-<br>tites | Gink-<br>gophytes | Conifers |
|-----------------|-------------------|-----------------|------------|-------|---------------|--------|------------------|-------------------|----------|
| Scoresby-L      | 1.000             | 0.500           | 0.625      | 0.533 | 0.273         | 0.281  | 0.125            | 0.474             | 0.464    |
| Veneto-L        | 0.000             | 0.000           | 0.375      | 0.367 | 0.273         | 0.031  | 0.450            | 0.105             | 0.679    |
| Franken-L       | 0.000             | 0.000           | 0.250      | 0.300 | 0.091         | 0.094  | 0.000            | 0.158             | 0.321    |
| Stonesfield-M   | 0.000             | 0.000           | 0.000      | 0.133 | 0.227         | 0.063  | 0.100            | 0.053             | 0.214    |
| Holy Cross-L    | 0.000             | 0.500           | 0.625      | 0.700 | 0.318         | 0.469  | 0.075            | 0.579             | 0.464    |
| Stara Planina-L | 0.000             | 0.000           | 0.125      | 0.300 | 0.136         | 0.219  | 0.100            | 0.211             | 0.071    |
| Reșița-L        | 0.200             | 0.500           | 0.250      | 0.667 | 0.455         | 0.219  | 0.400            | 0.474             | 0.286    |
| Scania-L        | 0.000             | 1.000           | 0.500      | 0.833 | 1.000         | 0.656  | 0.350            | 0.368             | 0.500    |
| Vendée-L        | 0.000             | 0.000           | 0.000      | 0.133 | 0.273         | 0.156  | 0.200            | 0.053             | 0.357    |
| Mecsek-L        | 0.000             | 0.000           | 0.500      | 0.433 | 0.273         | 0.219  | 0.075            | 0.263             | 0.536    |
| Yorkshire-M     | 1.000             | 0.500           | 1.000      | 1.000 | 0.591         | 1.000  | 1.000            | 1.000             | 1.000    |
| Brent-M         | 0.000             | 0.000           | 0.125      | 0.400 | 0.000         | 0.094  | 0.100            | 0.211             | 0.000    |
| Bearreraig-M    | 0.000             | 0.000           | 0.125      | 0.167 | 0.000         | 0.063  | 0.050            | 0.000             | 0.036    |
| Andoya-M        | 0.000             | 0.000           | 0.000      | 0.033 | 0.045         | 0.000  | 0.025            | 0.105             | 0.143    |
| Grojec-M        | 0.000             | 0.000           | 0.500      | 0.667 | 0.091         | 0.156  | 0.075            | 0.053             | 0.107    |
| Sardegna-M      | 0.000             | 0.000           | 0.000      | 0.200 | 0.091         | 0.094  | 0.425            | 0.000             | 0.214    |
| Causses-M       | 0.000             | 0.000           | 0.375      | 0.067 | 0.000         | 0.000  | 0.000            | 0.000             | 0.107    |
| Mamers-M        | 0.000             | 0.000           | 0.250      | 0.000 | 0.045         | 0.000  | 0.300            | 0.000             | 0.071    |
| Sutherland-U    | 0.000             | 0.000           | 0.375      | 0.733 | 0.318         | 0.469  | 0.250            | 0.000             | 0.500    |
| Basel-U         | 0.000             | 0.000           | 0.125      | 0.000 | 0.000         | 0.000  | 0.025            | 0.000             | 0.214    |
| Jura-U          | 0.000             | 0.000           | 0.000      | 0.167 | 0.182         | 0.281  | 0.225            | 0.000             | 0.714    |
| Wólka-U         | 0.000             | 0.000           | 0.000      | 0.000 | 0.091         | 0.000  | 0.000            | 0.000             | 0.143    |
| Solnhofen-U     | 0.000             | 0.500           | 0.125      | 0.100 | 0.045         | 0.000  | 0.075            | 0.316             | 0.750    |

## RESULTS AND DISCUSSION

### ALPHA DIVERSITY

The dataset includes 770 macrofossil plant taxa from 25 units (46 localities) of the European Jurassic. Only 181 (23.5%) of the 770 taxa occurred at more than one locality; 76.5% of them are specific to single localities or groups of localities.

The two most widespread species were *Cladophlebis denticulata* and *C. haiburnensis*, present at eight localities. Of the 65 ginkgo-phyte taxa present in the European Jurassic, only five occurred at more than two localities.

The analysed localities greatly differ in the degree of diversity of their floral composition (Fig. 1). Most diverse is the flora from Yorkshire (Middle Jurassic, 197 taxa), where all plant groups are represented by a large number of taxa. Five localities (Andoya-M,

Basel-U, Bearreraig-M, Causses-M, Wólka-U) showed ca 10 or fewer species.

As shown in Figure 2A and B, the number of taxa decreased by 22.7% (species level) and 21.3% (genus level) going from the Early to Middle Jurassic, and continuously from the Middle to Late Jurassic by 12.9% (species) and 15.9% (genera). The decrease in taxa corresponds to a decrease in the number of known fossiliferous sites in the Late Jurassic. This trend may be explained by an increase of sea level followed by transgression, particularly significant from the Middle Jurassic, which reduced the extent of emerged land in Europe (e.g. Pieńkowski et al. 2008) and consequently the terrestrial habitats. However, the numerical ratio of species/genera which defines average diversity in particular epochs does not decrease proportionally with time, but is highest in the Early Jurassic (3.7), followed by the Late Jurassic (3.1), and lowest in the Middle Jurassic (2.8).

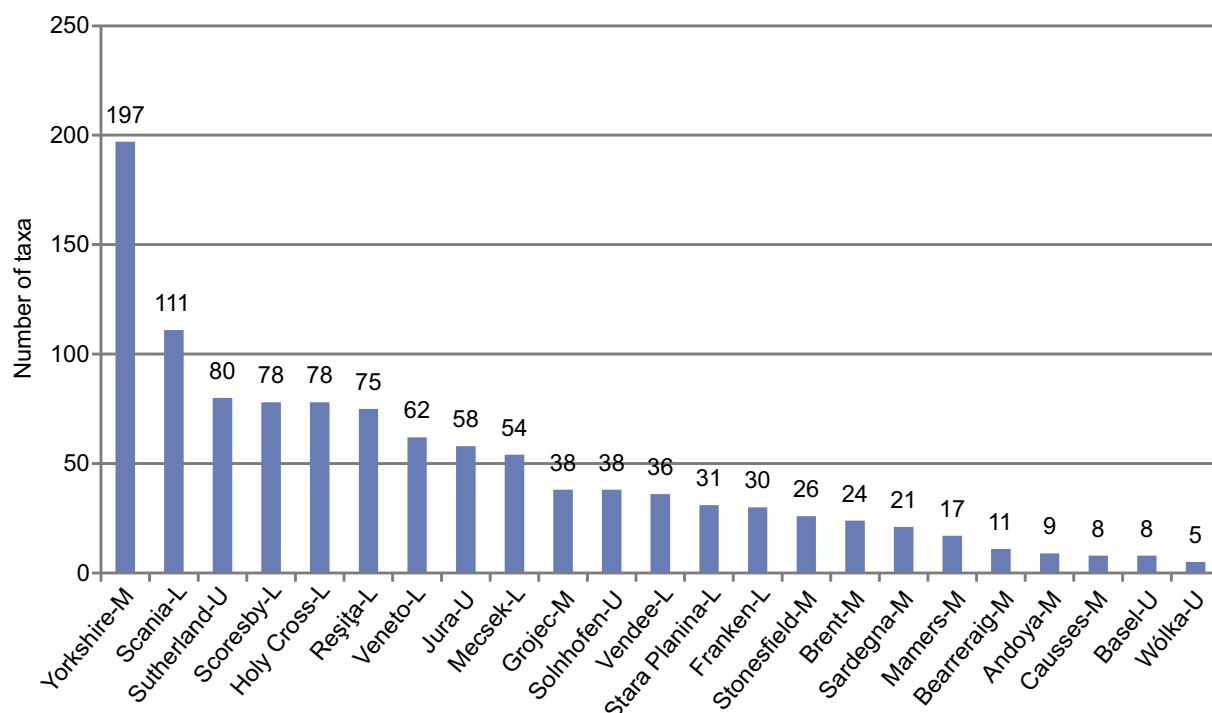


Fig. 1. Diversity of the studied localities

That last ratio is remarkable, because the most diverse flora (Yorkshire) is Middle Jurassic in age. On the other hand, half of the localities/ areas yielding Jurassic plant fossils are Early Jurassic in age. However, this alone cannot explain the conspicuously high diversity of the Early Jurassic (e.g. at Reșița, Scania, Scoresby Sound) presented on Figure 1.

Almost all higher plant groups were found in most localities and during the entire Jurassic. Usually the highest diversity was among ferns (11 units) and conifers (10 units), while bennettitaleans were the most diverse at only three localities. The distribution and diversity of the higher plant groups also depended on the type of locality. The most diversified and abundant floras come from large units like Yorkshire-M, Scoresby-L, Franken-L, and Scania-L, which have been studied in detail and over an extended period. Smaller localities such as Grojec-M, Mecsek-L, Reșița-L, Sardegna-M, and Solnhofen-U also yielded a rich and diverse flora. Several small plant associations such as Basel-U, Causses-M, Jura-U, Mamers-M, Veneto-L, and Wólka-U are characterised by a low number of taxa. Those are generally allochthonous and deposited in lagoonal sedimentary basins. It is possible that plant remains from these localities were exposed to damage, destruction, and selection during transport prior to their burial in the marine environment.

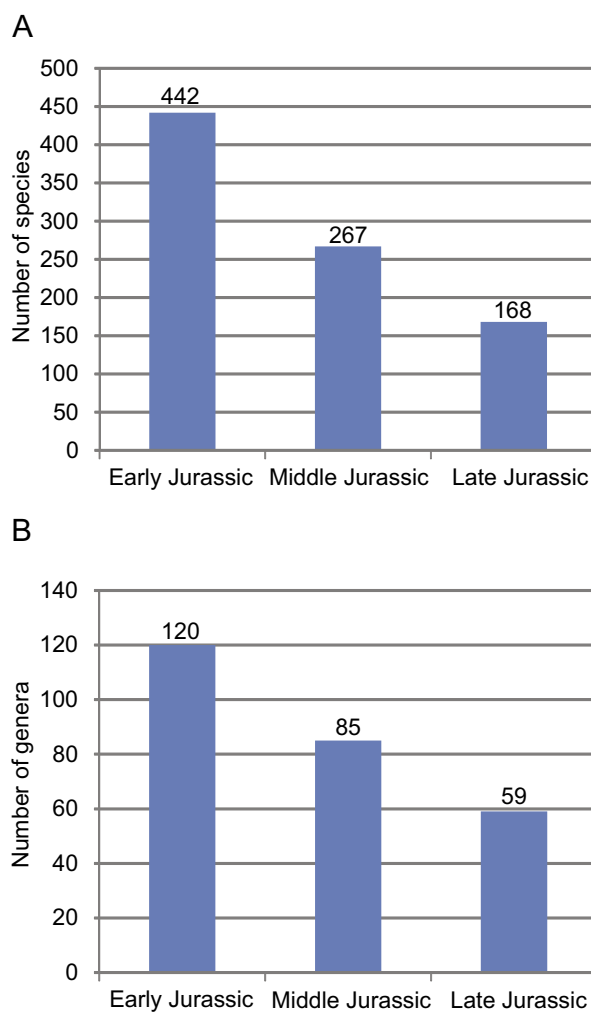
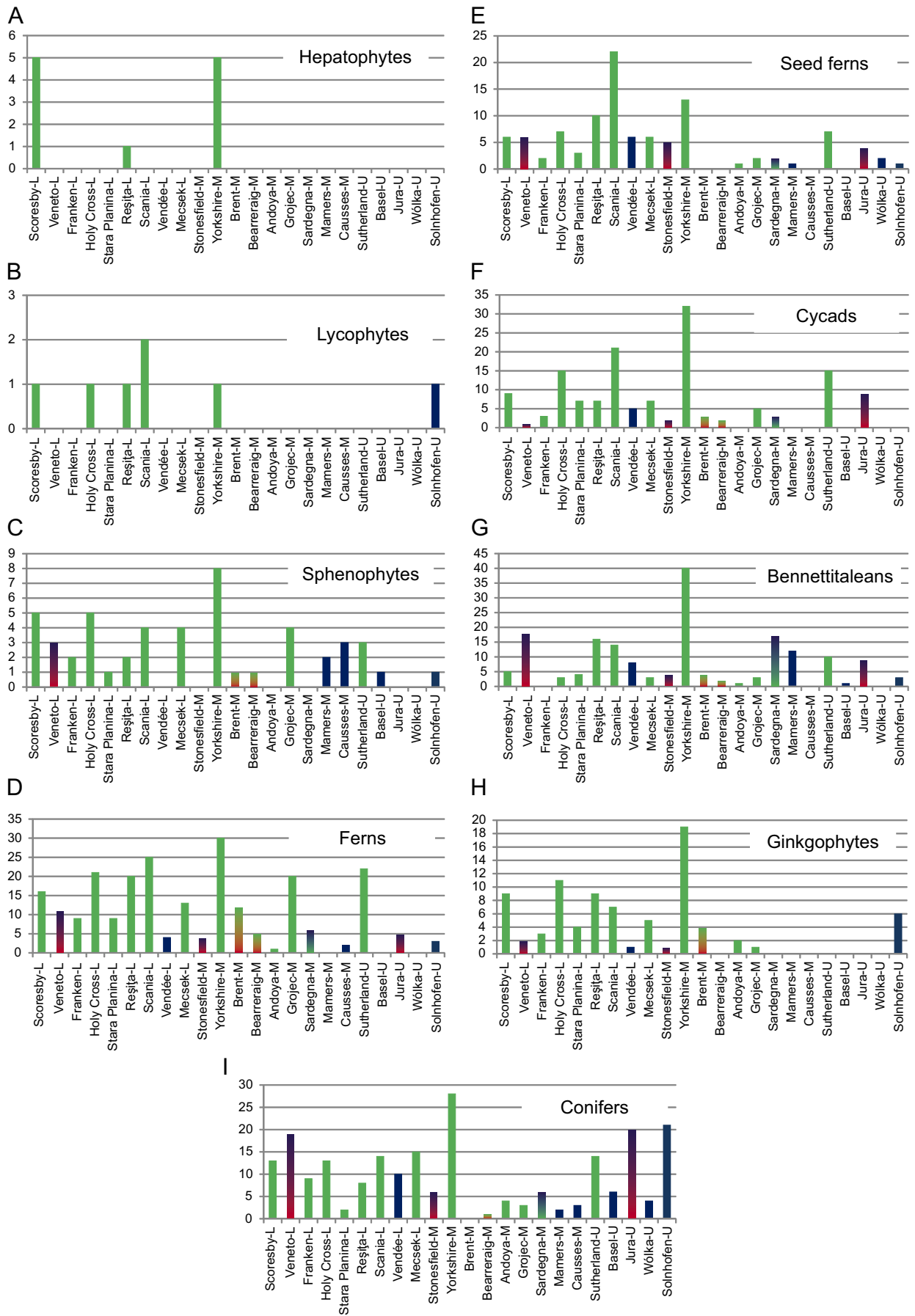


Fig. 2. **A** – Number of species in particular epochs. **B** – Number of genera in particular epochs



**Fig. 3.** Number of recorded taxa belonging to major plant groups, by time and environment. Green – delta and fluvial, blue – coastal and lagoon, blue-green – coastal, fluvial. Grouping by cluster analysis: blue-red – allochthonous coastal lagoonal, green-red – allochthonous fluvial and delta



Bryophytes and lycophytes are the rarest plant groups (Fig. 3A, B). They were described mostly from Early Jurassic floras (e.g. Holy Cross-L, Reșița-L, Scania-L, Scoresby-L) and from the Yorkshire Middle Jurassic locality. The low diversity of these groups might be due to factors such as their low fossilization potential and difficulties in correct identification due to their small size. Sphenophytes as well as ginkgophytes were common and diverse during the whole Jurassic (Fig. 3C, H); their diversity decreased slightly in the Middle and Late Jurassic, but this might also reflect the general decrease in species diversity from the Middle to Late Jurassic. The distribution of ferns is quite constant through the Jurassic, differing in diversity between localities, with a slight decrease towards the Late Jurassic (Fig. 3D). The distribution of cycads and bennettitaleans also remains quite constant throughout the Jurassic (Fig. 3F, G). Seed ferns show a significant reduction through time, with the highest diversity in Scania-L (Fig. 3E).

Conifers show a significant reduction of taxa number in the Middle Jurassic but increase in diversity during the Late Jurassic (Fig. 3I).

Based on the relative abundance of the higher plant groups within the different floras, the localities can be divided into five categories. Category A, including Basel-U, Causses-M, and Wólka-U, (Fig. 4A) is characterised by a low number of plant groups (2–3) but significantly more diverse conifers. These localities are usually poor in taxa and are formed in a lagoonal setting. This suggests transport of plants at least from the coastal zone to the site of deposition. Category B, including Andoya-M, Jura-U, and Solnhofen-U (Fig. 4B), shows similar lagoonal deposition and very diverse conifers, but other plant groups are also represented (5–7).

Category C (Fig. 4C) includes two localities (Mamers-M, Sardegna-M) in which bennettitaleans are the most diverse group, associated with conifers, seed ferns and ferns or horse-tails (4–5 plant groups).

Category D (Fig. 4D) is characterised by very diverse ferns and low occurrence of higher plant groups (5–7). This group contains Bearerraig-M, Brent-M, and Grojec-M, all Middle Jurassic in age. This grouping is in line with Abbink et al.'s (2004) inference, on the basis of palynological results from the Callovian, of cooler and more humid conditions.

The last two categories, E and F (Fig. 4E, F), are characterised by the presence of numerous higher plant groups but with lower taxonomical variability within the various groups; no group shows much higher diversity than the other groups in these floras. Category E has 6–7 higher plant groups, with almost equally diverse conifers, ferns, cycads, and bennettitaleans. The floras in this group are those of Franken-L, Mecsek-L, Stonesfield-M, Veneto-L, and Vendée-L.

In category F the 7–9 higher plant groups are represented by relatively equal numbers of taxa. This group includes Holy Cross-L, Reșița-L, Scania-L, Scoresby-L, Stara Planina-L, Sutherland-U, and Yorkshire-M.

It seems that high diversity of one of the higher plant groups (Fig. 4A–D) limits both the diversity and number of the other groups, while uniform variability within plant groups is associated with an increase of the number of groups in a given environment (Fig. 4E, F).

The trends depicted in Figure 4A–F can be explained by the correlations for certain plant groups (Fig. 5). The correlation is highest between cycads and ferns (0.85) and lowest between bennettitaleans and sphenophytes (0.5). The correlation is also low between seed ferns and sphenophytes (0.53), conifers and ginkgophytes (0.55), and conifers and ferns (0.57).

#### MULTIVARIATE ANALYSES

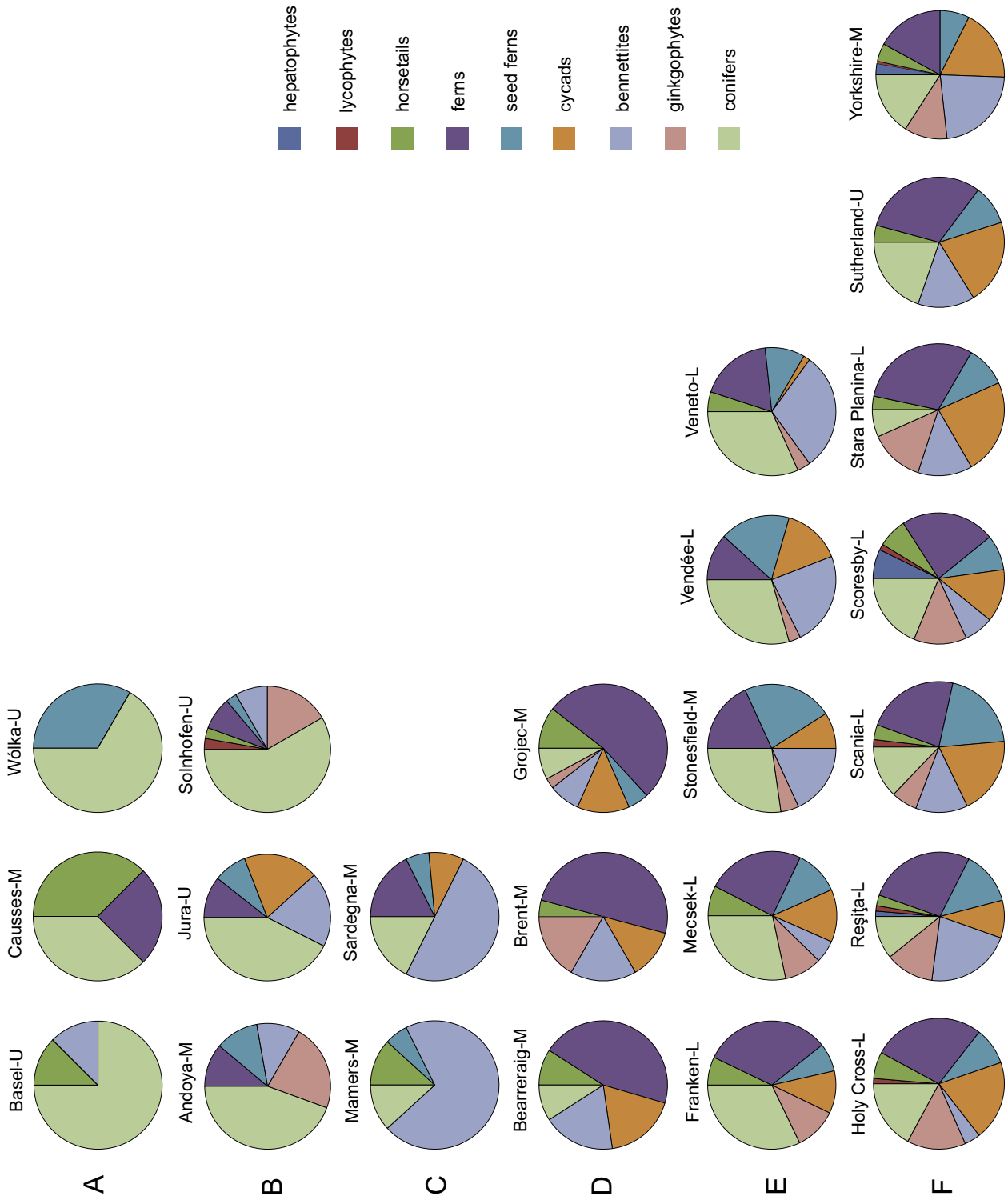
Multivariate analyses were performed at the level of higher plant groups based on their diversity. Both PCA (Fig. 6) and visualisation by NMDS (Fig. 10) show a strong horseshoe effect which is generally caused by the nonlinear connection between the variables (Podani & Miklos 2002). This is common in ecological samples (Rees et al. 2000), where environmental factors often influence the plot. The position of the localities in Figure 6 is determined by their taxonomical composition at the level of major plant groups. The PCA biplot shows which groups affected the differentiation of localities and to what degree. The vectors show the reversed direction and significance (length) of this effect.

In PCA (Fig. 6) the localities with lagoonal and coastal settings occupy the right upper quarter of the plot, while those of fluvial or deltaic types occupy the right lower quarter. The first component explains 73% of the variance

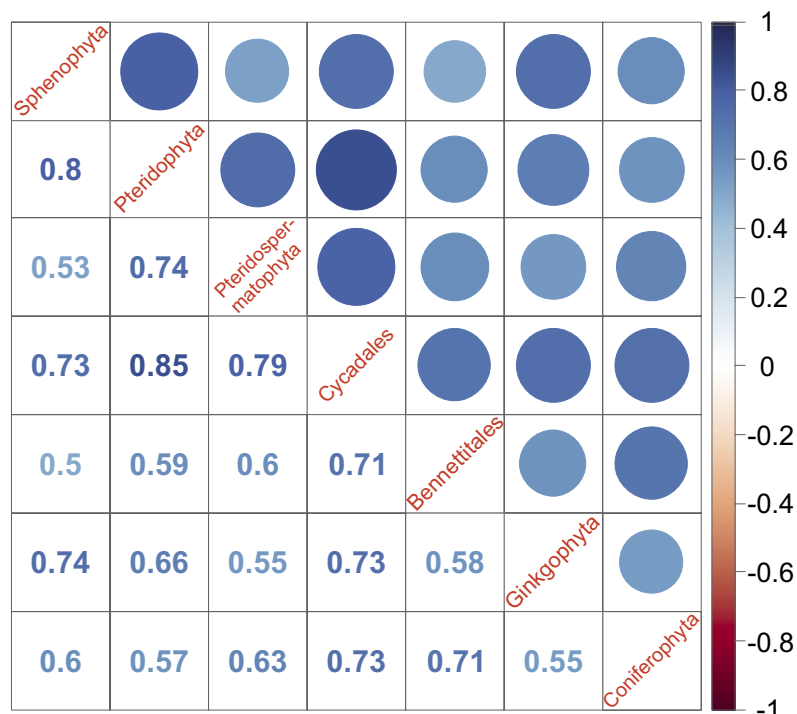
and the second explains 12%, indicating that the method is reliable.

Along the PC1 axis all plant groups are negatively correlated. The first component is determined mainly by the ferns (loading:  $-0.5$ ), cycads (loading:  $-0.47$ ), and bennettitaleans

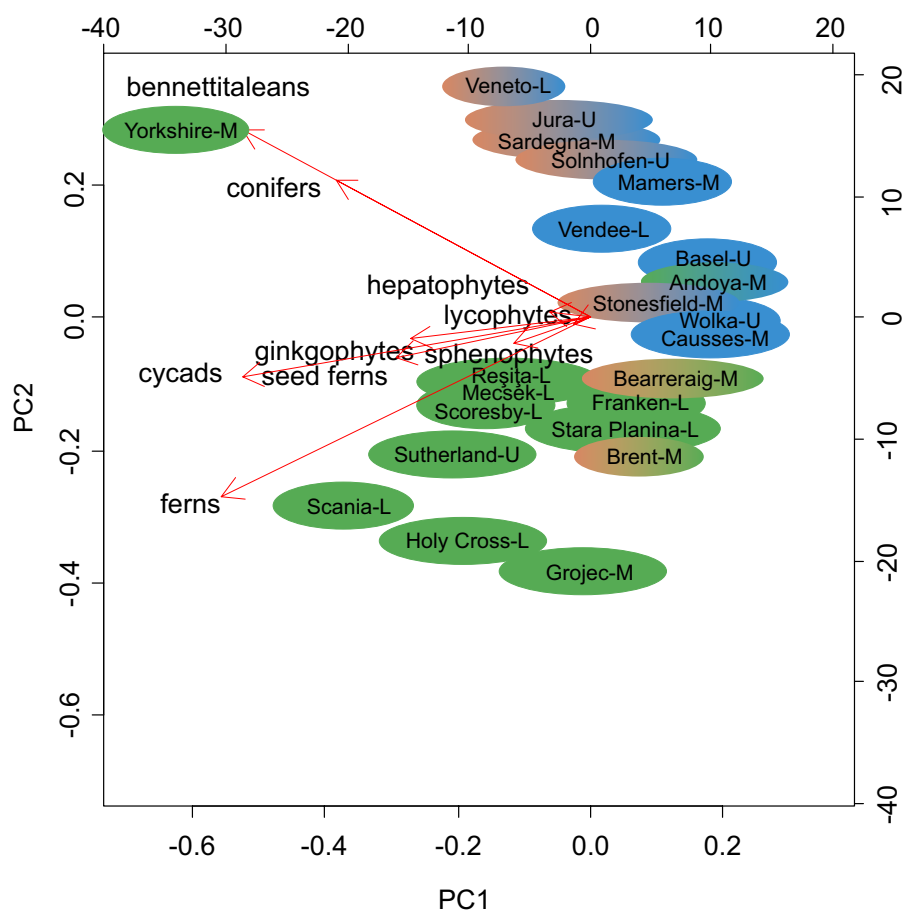
(loading:  $-0.48$ ). Along the PC2 axis the bennettitalean group is positively correlated and the most important (loading  $+0.73$ ), together with ferns having similar absolute values but different signs (loading  $-0.57$ ). The small loading values indicate low explanatory power of



**Fig. 4.** Grouping of localities by diversity. **A** – with maximum diversity of conifers and low number of other plant groups, **B** – with maximum diversity of conifers but with other more diverse plant groups, **C** – with maximum diversity of bennettitaleans, **D** – with maximum diversity of ferns, **E** – with high number of plant groups but with conifers being most diverse, **F** – with high number of plant groups, rather equally represented



**Fig. 5.** Correlation values of plant groups during the Jurassic in Europe (the size and colour intensity of the circles represent the strength of the correlation)



**Fig. 6.** PCA biplot calculated from plant group diversity of all localities. Arrows indicate the trend of the plant groups in forming axes PC1 and PC2. Locality colours correspond to depositional environment: green – delta and fluvial, blue – coastal and lagoon, blue-green – coastal and fluvial. Grouping by cluster analysis: blue-red – allochthonous coastal lagoonal, green-red – allochthonous fluvial and delta

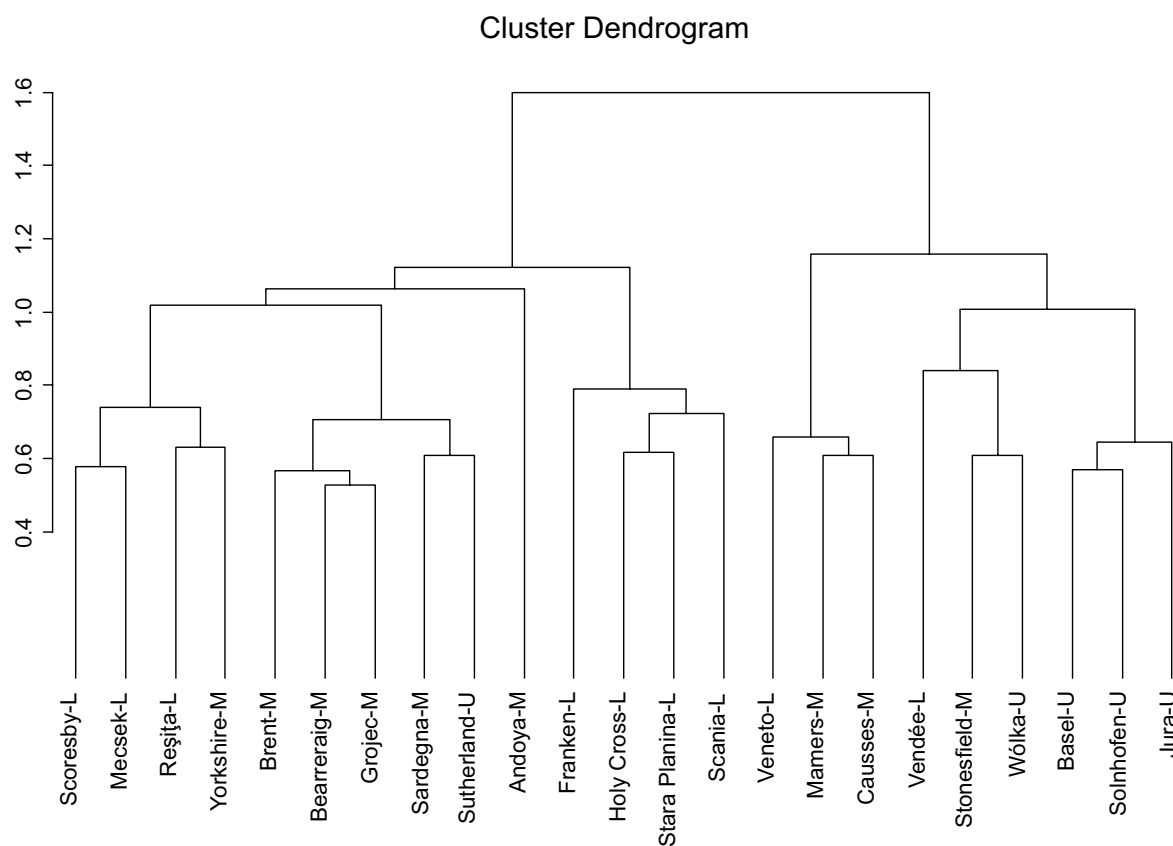


Fig. 7. Cluster dendrogram calculated with Ward's method, based on genus data

groups such as hepatophytes, lycophytes, and sphenophytes (loadings under 0.1).

Yorkshire-M is most highly influenced by bennettitaleans (40 taxa), followed by the Veneto-L flora (with 18 taxa). In Sardegna-M (17) and Mamers-M (12) the ferns are extremely rare, having a high impact in the negative region of the PCA plot.

The negative correlation of PC2 is affected mainly by the ferns. Relatively high fern diversity characterises Holy Cross-L (21 taxa) and Grojec-M (20 taxa), and also Scania-L (25 taxa), Sutherland-U (22), and Scoresby-L (16), which were fern-dominated.

#### CLUSTER ANALYSES

Ward's cluster analysis was done for genus and species levels. The analysis based on genera allowed us to compare localities in which the state of preservation prevents determination to species. Analyses on genus level also lessen the possibility of error resulting from incorrect classification.

In the genus cluster (based on presence-absence) the localities are organized in two major clades corresponding to their palaeoenvironmental distribution (Fig. 7). The first clade

(left) groups all localities with fluvio-deltaic depositional settings. The second clade (right) groups all localities of lagoonal, archipelago of spongy reefs, or island environments with marine influences (xerophytic plants, salt trails visible on cuticle structures). Some outcrops (Causse-M, Mamers-M) are lagoonal or correspond to paralic basins (Barale 1981, Bernier et al. 2014). Some floras such as Solnhofen-U (Barthel et al. 1990), Wólka-U (archipelago of spongy reefs and islands), and Veneto-L (preserved in the marine Calcarei Grigi Formation) were formed in marine settings and preserved in limestone with few taxa (Bartirromo & Barone Lumaga 2009). The allochthonous floras (unknown depositional environment) tend towards fluvio-deltaic or lagoonal types of environment.

Cluster analysis based on species shows a different pattern of similarity between particular localities (Fig. 8). In contrast to the cladogram at genus level, environment is not the most important factor; a set of different factors seems to influence the grouping of localities.

The error of this analysis is rather large. In the genera dataset, 40% of the genera are recorded from only one locality, while in the species dataset the singletons comprise 67%.

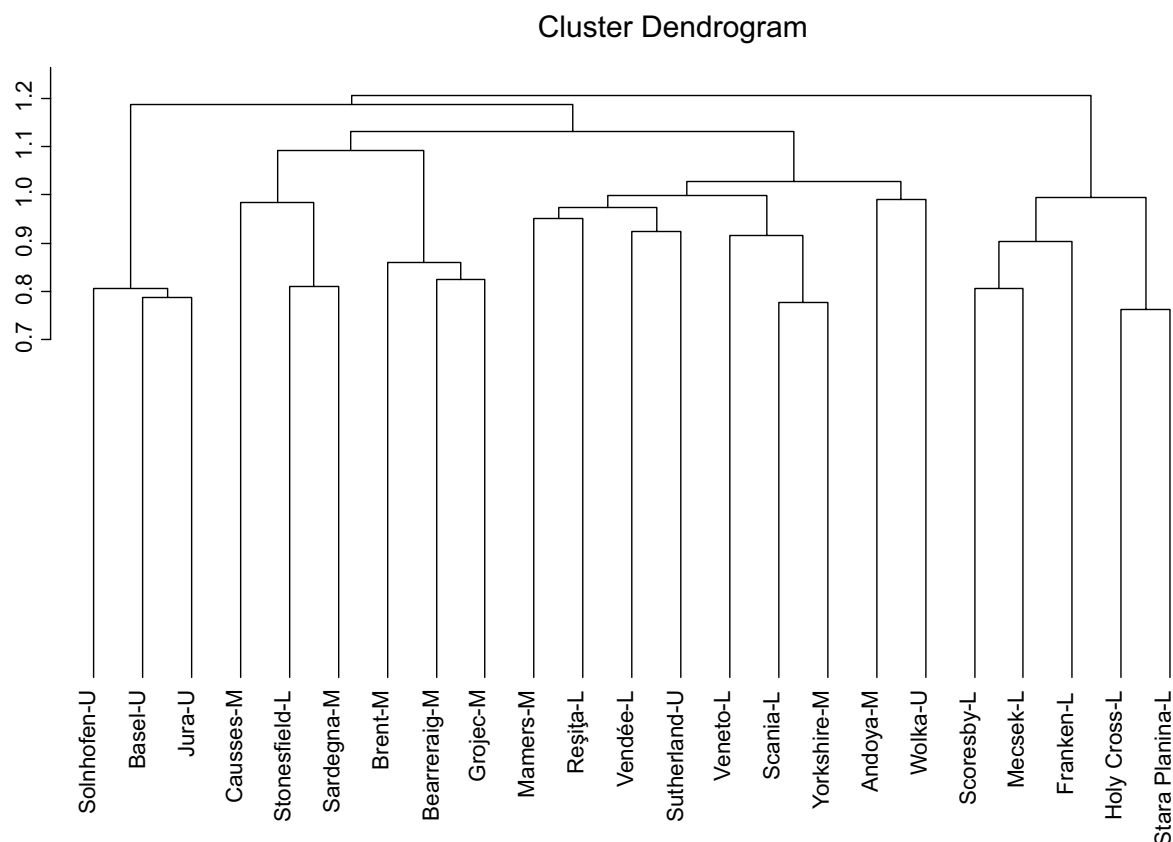


Fig. 8. Cluster dendrogram calculated with Ward's method, based on species data

The analysis for species highlights similarity between sites, while the cluster analyses for genera points up differences between localities. The large number of singletons is a serious source of error, making the data difficult to compare.

Table 5 presents a correlation analysis showing very low correlations and a very low linear connection between localities.

The highest correlation is between Stara Planina-L and Holy Cross-L. The correlations are also high between Holy Cross-L and Franken-L and between Scoresby-L and Mecsek-L. These localities are grouped together in the cladogram (right clade); this may be explained by their location on the stable European continental platform (Csontos & Vörös 2004). Additionally, all of them are Early Jurassic in age.

The other clade (right middle) contains localities of mixed age, which are correlated with Yorkshire-M (Scania-L, Vendée-L, Veneto-L) and are grouped with localities whose correlations are minimal (Reșița-L, Andoya-M). This is probably due to their high numbers of species not typical for European Jurassic floras and derived from neighbouring areas such as Reșița-L, which has numerous elements in

common with Iranian and Afghan floras (Popa 1998, Popa & Van Konijnenburg-van Cittert 2006, Vakhrameev 1991).

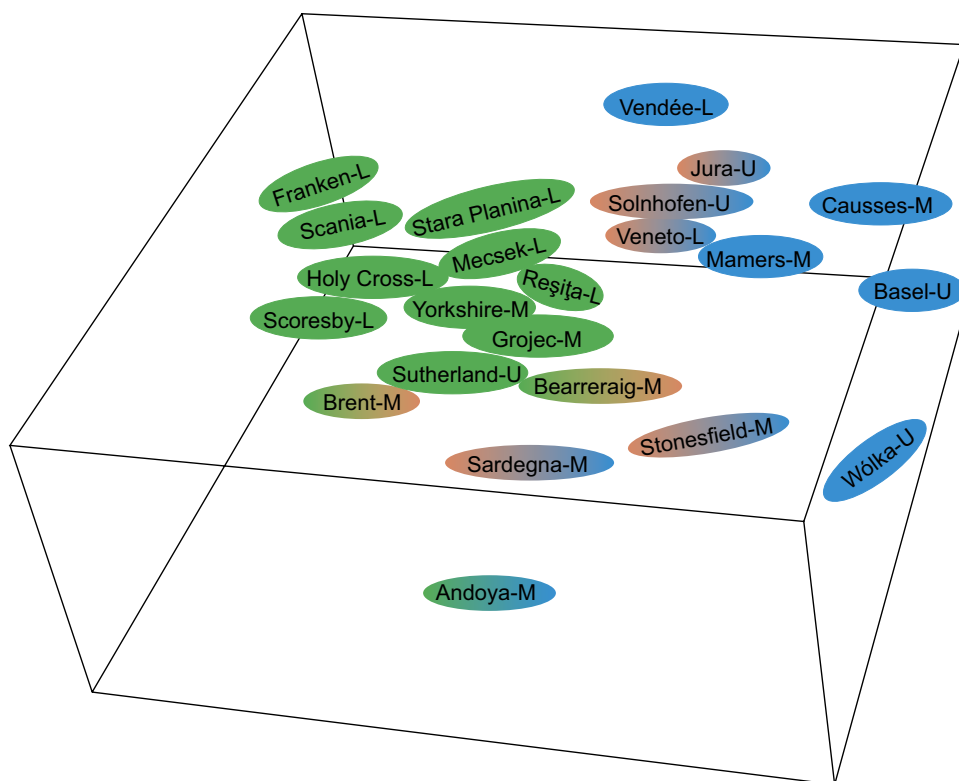
The floral composition of Andoya-M and Basel-U shows a high percentage of singleton taxa.

The third cluster (left middle in Fig. 8) has Berreraig-M, Brent-M, and Grojec-M fern-dominated floras; the three other points (Causse-M, Sardegna-M, Stonesfield-M) correlate mostly with Brent-M or Grojec-M. All of them are middle Jurassic in age.

The left-clade groups (Basel-U, Jura-U, Solnhofen-U) are conifer-dominated and deposited in deep marine environments, preserved in laminated marls.

Our three-dimensional NMDS (Fig. 9) visualises the relationships between all localities, displaying information in a distance matrix. The localities form two separate groups which correspond to the predominant type of depositional environment in a given territory. Those with coastal-lagoonal landscape (e.g. Andoya-M, Basel-U, Causse-M, Mammers-M, Solnhofen-U, Vendée-L, Wólka-U) are grouped together with allochthonous floras from Jura-U, Stonesfield-M, and Veneto-L, similar to the groupings in the PCA and in the genus





**Fig. 9.** 3D NMDS plot based on genus data. Colours indicate depositional environments: green – delta and fluvial, blue – coastal and lagoonal, blue-green – coastal and fluvial. Grouping by cluster analysis: blue-red – allochthonous coastal and lagoonal, green-red – allochthonous fluvial and delta

cladogram (Figs 6, 7 respectively). These localities are clearly separated from the floras of deltaic and fluvial environments.

## INTERPRETATION AND DISCUSSION

A comparison of many different localities dispersed in such a large area as Europe is bound to be affected by certain biases. One of the most important of them is the fact that the majority of the big fossil assemblages were collected over a long time interval (several years or decades), often from several sites in the same area or from different fossiliferous horizons. On the other hand, a finding of lower diversity of plant assemblages may be due to the small area of the locality, a low number of fossiliferous layers, and/or limited opportunities to sample. These kinds of problems are well known in palaeobotanical studies (Cleal & Rees 2003).

Due to the palaeobiogeographic distribution of the emerged land (Csonotos & Vörös 2004), most terrestrial European fossil assemblages are Early Jurassic in age (27 localities studied, comprising 59% of all studied floras). All of them are relatively diverse. The Middle Jurassic is represented by nine localities/

units (20% of all those studied); among them, Yorkshire-M is the richest of all European Jurassic localities (197 taxa), having nearly twice as many taxa as the richest Early Jurassic locality (Scania-L) and five times as many as the subsequent Middle Jurassic flora from Grojec-M (see Fig. 1). From all the remaining seven Middle Jurassic localities/units (15% of all those studied) fewer than 40 taxa were reported altogether. Ten localities are Late Jurassic in age. Basel-U in Switzerland and Wólka-U in Poland show very low plant diversity, with less than ten taxa. More diverse are the French Jura-U unit (three localities: Armaille, Creys, Orbagnoux) with 58 species, and Sutherland-U (Scotland) with 80 species.

The cluster analyses clearly indicate that time is the factor that least influences the floristic composition of Europe's Jurassic localities. Neither in the genus nor in the species cladograms were the localities grouped by age.

At genus level the principal factor affecting taxonomical composition is the type of environment. Based on the depositional settings of the localities, three types of depositional environments were distinguished: fluvial; deltaic, representing riparian vegetation; and lagoonal,

most probably representing coastal environments (references in Table 2).

The results from multivariate analyses clearly separate the floras of fluvial and deltaic habitats from those of lagoonal or coastal vegetation. Such differentiation can be explained by the stress effect observed in plant assemblages from marine-influenced environments (xerophytic conditions). The poorer plant content of marine deposits might also be caused by taphonomic selection during transport from emerged land to the deep-sea environments where they fossilized (e.g. Wólka-U).

It is noticeable that in most localities in lagoonal depositional settings, which suggest a coastal influence on the vegetation, one of the higher plant groups is more diverse than others. This is the case of the conifers found in Andoya-M, Basel-U, Causses-M, Solnhofen-U, and Wólka-U, or the bennettitaleans in Mammers-M and Sardegna-M (conifers are also well represented in these latter floras). The rest of the “lagoon” localities, although more variable in plant groups, have considerably less diverse ferns.

In delta and fluvial depositional environments the ferns are very diverse, sometimes more diverse than all other plant groups, while the diversity of ginkgophytes varies widely between localities. Conifers are usually less diverse than in lagoon environments (see Fig. 4 A–E).

Cluster analysis at species level does not differentiate localities by environment as much as it links them by common species which can be very widespread and highly tolerant. This analysis rather shows similarities in alpha diversity and also correlations between numbers of common species.

Alpha diversity analysis showed the plant groups to have unequal distributions in particular localities. Sphenophytes are not recorded at seven localities (see Fig. 3C). Six of these localities were conifer-dominated and had small amounts of ferns, except for Sardegna-M which was fern-dominated. The presence of ferns would suggest wet conditions but sphenophytes did not develop there. The total lack of sphenophytes in the Stonesfield-M flora has been explained by the absence of marshy conditions (Cleal & Rees 2003).

At some small localities with allochthonous flora the absence of certain plant groups might be explained by taphonomic processes.

For example, ferns are highly diverse at almost every locality (Fig. 3D). Most widely distributed are *Cladophlebis denticulata* and *C. haiburnensis* (8 localities), *Todites princeps* and *T. williamsoni* (7 localities), *Clathropteris meniscoides*, *Phlebopteris angustiloba*, and *P. polypodioides* (6 localities); other species of *Thaumatopteris*, *Dictyophyllum*, and *Phlebopteris* occur at five localities. Such a wide distribution of ferns may be explained in part by the higher number of deltaic and fluvial environments, always favourable for ferns.

A lack of sphenophytes and ferns may be connected with conditions or with the energy of transport. Delicate fronds can hardly withstand long-distance transport in water. This would also explain why palynological samples of Jurassic terrestrial sediments contain frequent fern spores (Abbink et al. 2004, Götz et al. 2011).

Seed ferns were very common elements during the whole Jurassic (Fig. 3E) but they were missing from a few low-diversity localities with allochthonous flora. At genus level the seed ferns are not very diverse even though the 18 seed fern genera contain 73 species. High diversity of seed ferns can be explained by their ability to occupy various palaeoecological habitats, from mires (where they can be coal generators) to flood plains and levees, sometimes even as mangroves or as climbers and lianas (Harris 1932a, Harris 1964, Popa 1997b). This evolutionary strength is therefore expressed systematically.

The genera *Sagenopteris* and *Pachypteris* are most widespread among the seed ferns, both recorded from 12 localities, but in fact only 8 species of *Sagenopteris* and 12 species of *Pachypteris* were reported from Europe. Most of them occur at only one locality.

At genus level the most frequent is *Brachyphyllum* (18 localities), probably due to its wide environmental tolerance (Vakhrameev 1970, 1991, Alvin 1982, Hesselbo et al. 2003, Greb et al. 2006, Wang et al. 2005, Popa & Van Konijnenburg-van Cittert 2006, Barbacka 2011). Also widespread are *Nilssonia*, *Otozamites* (14 localities), *Pterophyllum*, *Neocalamites*, *Baiera*, *Pagiophyllum* (10 localities), and *Elatocladus*, *Podozamites*, and *Equisetites* (9 localities). Most of these are associated with deltaic and fluvial environments which offered variable and good conditions for diversification of floras (Popa 2009, Barbacka 2011).



In both cluster analysis and the NMDS matrix it can be seen that allochthonous floras with uncertain environmental settings are attributable to a depositional setting based on their composition. This may be helpful in general discussions on their depositional settings. Thus, the palaeoenvironment related to the French Late and Early Jurassic localities may be determined as lagoon, while Bearraig-M, Brent-M, Sutherland-U, and Veneto-L probably originated from fluvial/deltaic surroundings.

## CONCLUSIONS

- The Jurassic floras of Europe are continuous in transitions between epochs; they often show similarity independently of time.
- Particular epochs differ in dominant plant groups but not greatly.
- The most diverse flora comes from the Middle Jurassic (Yorkshire, 197 taxa) although the Middle Jurassic is represented by the fewest localities.
- It seems that during the entire Jurassic the growth and depositional environment was the factor most influencing the floral composition.
- The basic known types of environment were characterised by the dominance of particular plant groups.
- Statistical methods are helpful in segregating and interpreting large datasets. Especially interesting here is the clear differentiation of allochthonous localities by habitat conditions.

## ACKNOWLEDGMENTS

We thank Johanna H.A. Van Konijnenburg-van Cittert for revising the Yorkshire data, Attila Vörös for palaeogeographical comments, and the reviewers for constructive remarks on the manuscript. This work was supported by funds from the Polish National Science Centre (grant No DEC-2012/05/B/NZ8/00990), the Hungarian National Science Foundation (grant OTKA 100658), and statutory funds of the W. Szafer Institute of Botany, Polish Academy of Sciences.

## REFERENCES

- ABBINK O., Van KONIJNENBURG-van CITTERT J.H.A. & VISSCHER H. 2004. A sporomorph ecogroup model of the Northwest European Jurassic–Lower Cretaceous: concepts and framework. *Geol. Mijnbouw*, 83: 17–38.
- AHLBERG A., SIVHED U. & ERLSTRÖM M. 2003. The Jurassic of Skåne, southern Sweden. *Geol. Surv. Den. Greenl. Bull.*, 1: 527–541.
- ALVIN K.L. 1982. Cheirolepidiaceae: biology, structure and paleoecology. *Rev. Palaeobot. Palynol.*, 37: 71–98.
- BARALE G. 1981. La Paléoflora jurassique du Jura français: étude systématique, aspects stratigraphiques et paléocologiques. *Docum. Lab. Géol. Lyon*, 81: 1–467.
- BARALE G. 1987. Les cheirolepidiacees du jurassique inférieur de Saint-Fromond, bassin de Carentan (Manche-France). *Bull. Soc. Bot. France, Actual Bot.*, 134(2): 19–37.
- BARBACKA M. 1992. The Liassic seed ferns of the Mecsek Mountains (S. Hungary): 257–263. In: J. Kovar-Eder (ed.), *Palaeovegetational development in Europe and regions relevant to its palaeofloristic evolution*. Proc. Pan. Eur. Palaeobot. Conf. Vienna, 19–23 Sept. 1991.
- BARBACKA M. 1994a. *Komlopteris* Barbacka nov. gen., a segregate from *Pachypteris* Brongniart. *Rev. Palaeobot. Palynol.*, 83: 339–349.
- BARBACKA M. 1994b. *Pachypteris banatica* from the Mecsek Mountains Liassic. *Acta Palaeobot.* 34(1): 5–19.
- BARBACKA M. 1997. *Ctenozamites cycadea* (Berger) Schenk from the Mecsek Mountains Liassic – S. Hungary. *Meded. Nederl. Inst. Toegep. Geowetens. TNO*, 58: 81–85.
- BARBACKA M. 2000. Bennettitales from the Mecsek Mountains Liassic, Hungary. *Acta Palaeobot.*, 40(2): 111–127.
- BARBACKA M. 2001. The cycads of Hungarian Liassic. *Rev. Paléobiol.*, 20(2): 525–541.
- BARBACKA M. 2002. The Liassic Ginkgoales from the Mecsek Mountains, Hungary. *Rev. Paléobiol.*, 21(2): 697–715.
- BARBACKA M. 2009. Sphenophyta from the Early Jurassic of the Mecsek Mts., Hungary. *Acta Palaeobot.*, 49(2): 221–231.
- BARBACKA M. 2011. Biodiversity and the reconstruction of Early Jurassic flora from the Mecsek Mountains (southern Hungary). *Acta Palaeobot.*, 51(2): 127–179.
- BARBACKA M. & BODOR E. 2008. Systematic and palaeoenvironmental investigations of fossil ferns *Cladophlebis* and *Todites* from the Liassic of Hungary. *Acta Palaeobot.*, 48(2): 133–149.
- BARBACKA M., PÁLFY J. & SMITH P.L. 2006. Hettangian (Early Jurassic) plant fossils from Puale Bay (Peninsular terrane, Alaska). *Rev. Palaeobot. Palynol.*, 142: 33–46.
- BARBACKA M., ZIAJA J. & WCISŁO-LURANIEC E. 2010. Taxonomy and palaeoecology of the Early Jurassic macroflora from Odrowąż, central Poland. *Acta Geol. Pol.*, 60(3): 373–392.

- BARBACKA M., ZIAJA J., WCISŁO-LURANIEC E. & REYMANÓWNA M. 2007. *Hirmeriella muensteri* (Schenk) Jung from Odrowąż (Poland), with female and male cones, and in situ *Classopolis* pollen grains. *Acta Palaeobot.*, 47(2): 339–357.
- BARBACKA M., PACYNA G., FELDMAN-OLSZEWSKA A., ZIAJA J., BODOR E. 2014. Triassic-Jurassic flora of Poland; floristical support of climatic changes. *Acta Geol. Pol.*, 64(3): 281–308.
- BARTIROMO A. & BARONE LUMAGA M.R. 2009. Taxonomical revision of the collection of Jurassic plants from Roveré di Velo (Veneto, northern Italy) stored in the Palaeontological Museum of the University of Naples “Federico II”. *Boll. Soc. Paleont. Ital.*, 48(1): 1–13.
- BARTHEL K.W., SWINBURNE N.H.M. & CONWAY MORRIS S. 1990. *Solnhofen: a study in Mesozoic palaeontology*. Cambridge University Press, Cambridge.
- BATEMAN R.M., MORTON N. & DOWER B.L. 2000. Early Middle Jurassic plant communities in Northwest Scotland: paleoecological and paleoclimatic significance. *GeoResearch Forum*, 6: 501–512.
- BERNIER P., BARALE G., BOURSEAU J.-P., BUFFETAUT E., GAILLARD C., GALL J.-C. & WENZ S. 2014. The lithographic limestones of Cerin (southern Jura Mountains, France). A synthetic approach and environmental interpretation. *Compt. Rend. Palevol*, 13(5): 383–402.
- BRONGNIART A. 1828–1837. *Histoire des végétaux fossils ou recherches botaniques et géologiques sur les végétaux renfermés dans les diverses couches du globe*. Dufour et d’Ocagne (Vol. I), Crochard et Compagnie (Vol. II), Paris.
- BRONGNIART A. 1849. *Tableau des genres de végétaux fossils considérés sous le point de vue de leur classification botanique et de leur distribution géologique*. Martinem, Paris.
- BRUUN CHRISTENSEN O. 1995. Mid-Late Jurassic palaeoenvironments in the Northern North Sea, Norway as characterised by macroflora and fauna elements. *Geobios*, M.S., 18: 69–76.
- Van der BURGH J. & Van KONIJNENBURG-van CITTERT J.H.A. 1984. A drifted flora from the Kimmeridgian (Upper Jurassic) of Lothbeg Point, Sutherland, Scotland. *Rev. Palaeobot. Palynol.*, 43: 359–396.
- BUSH A.M. & BAMBACH R.K. 2004. Did Alpha diversity increase during the Phanerozoic? Lifting the veils of taphonomic, latitudinal and environmental biases. *Jour. Geol.*, 112(6): 625–642.
- CARPENTIER A. 1950. Les flores infraliasiques des Deux-Sevres et de la Vendée. *Ann. Paleont.*, 35: 1–23.
- CASCALES-MIÑANA B. 2010. Testing similarity coefficients for analysis of the fossil record using clustering methods: the Palaeozoic flora as a study case. *Rev. Españ. Paleont.*, 25(1): 19–34.
- CLEAL C.J. & REES P.M. 2003. The Middle Jurassic flora from Stonesfield, Oxfordshire, UK. *Palaeontology*, 46(4): 739–801.
- COIFFARD C., GOMEZ B., NEL A., KVAČEK J., NÉRAUDEAU D. & THÉVENARD F. 2008. Application of the Wagner’s Parsimony Method in fossil plant assemblages from the Cretaceous of Europe. *Rev. Palaeobot. Palynol.*, 148(1): 1–12.
- COMASCHI CARIA I. 1959. Le piante fossili della Sardegna. *Memorie VII. Riv. Ital. Paleont. Strat.*, 7: 1–176.
- CORSIN P. 1950. Découverte de sédiments rhétiens dans les Boulonnais. Etude préliminaire de leur faune et leur flore. *Ann. Soc. Geol. Nord.*, 70: 243–268.
- COSTAMAGNA L.G., BARCA S. & LECCA L. 2007. The Bajocian-Kimmeridgian Jurassic sedimentary cycle of eastern Sardinia: Stratigraphic, depositional and sequence interpretation of the new “Baunei Group”. *Compt. Rend. Geoscience*, 390: 601–612.
- CSONTOS L. & VÖRÖS A. 2004. Mesozoic plate tectonic reconstruction of the Carpathian region. *Palaeogeogr. Palaeoclimat. Palaeoecol.*, 210: 1–56.
- DIENI I., FISHER J.C., MASSARI F., SALARD-CHEBOLDAEFF M. & VOZENIN-SERRA C. 1983. La succession de Genna Selole (Baunei) dans le cadre de la paléogéographie mésojurassique de la Sardaigne orientale. *Mem. Sci. Geol. Padova*, 36: 117–148.
- DIETLS G. & SCHWEIGERT G. 2011. *Im Reich der Meerengel – Der Nusplinger Plattenkalk und seine Fossilien*. Verlag Dr. Friedrich Pfeil, München.
- DJORDJEVIĆ-MILUTINOVIĆ D. 2010. An overview of Paleozoic and Mesozoic sites with macroflora in Serbia. *Bull. Nat. Hist. Mus.*, 3: 27–46.
- DOWER B.L., BATEMAN R.M. & STEVENSON D.W.M. 2004. Systematics, ontogeny, and phylogenetic implications of exceptional anatomically preserved cycadophyte leaves from the Middle Jurassic of Berreraig Bay, Skye, Northwest Scotland. *Bot. Rev.*, 70(2): 105–120.
- EDWARDS W.N. 1929. The Jurassic flora of Sardinia. *Ann. Mag. Nat. Hist.*, 10: 385–394.
- GEE C.T., MEYER C.A. & Van KONIJNENBURG-van CITTERT J.H.A. 2003. The first unequivocal sphenophytes from the Late Jurassic of northwestern Switzerland (late Oxfordian Vellerat Formation) – palaeobotany and implications for facies interpretation. *Cour. Forsch.-Inst. Senckenberg*, 241: 97–109.
- GIVULESCU R. 1992. Une révision nomenclaturale et taxonomique de la flore du Lias de Vulcan-Codlea, Roumanie. *Contribuii Botanice, Bucuresti*.
- GIVULESCU R. 1997. La flore du lias inférieur d’Anina (Roumanie). *Natura Silvaniae*, 1: 67–81.
- GIVULESCU R. 1998. Flora fosili a Jurasicului inferior de la Anina. *Editura Academiei Romane, Bucuresti*.

- GOTHAN W. 1914. Die unter-liassische (rhätische) Flora der Umgegend von Nürnberg. *Abhand. Naturhistor. Gesell. Nürnberg*, 19: 89–186.
- GÖTZ A.E., RUCKWIED K. & BARBACKA M. 2011. Palaeoenvironment of the Late Triassic (Rhaetian) and Early Jurassic (Hettangian) Mecsek Coal Formation (south Hungary): implications from macro and microfloral assemblages. *Palaeobiodiv. Palaeoenviron.*, 91: 75–88.
- GRABOWSKA I., MARCINKIEWICZ T., ORŁOWSKA-ZWOLIŃSKA T. & ROGALSKA M. 1970. Flora jury dolnej i środkowej: 47–55. In: *Budowa Geologiczna Polski. Tom II. Katalog Skamieniałości. Część 2. Mezozoik. Wydawnictwa Geologiczne, Warszawa.*
- GRANDORI L. 1913a. Intorno alla flora dei calcari grigi studiata da Achille De Zigno. Nota preliminare. *Accademia Veneto-Trentino-Istria di Padova*, 6: 143–148.
- GRANDORI L. 1913b. La Flora dei Calcari Grigi del Veneto, Parte Prima. Revisione e completamento dell'opera "Flora Fossilis Formationis Ooliticae" del Barone A. De Zigno. *Memorie dell'Istituto Geologico della Regia Università di Padova*, 2: 1–112.
- GREB S.F., DiMICHELE W.A. & GASTALDO R.A. 2006. Evolution and importance of wetlands in earth history. *Geol. Soc. Am. Special Paper*, 399: 1–40.
- GREGOR H.J. & HAUPTMANN S. 1998. Geologie, Fazies und Fossilinhalt des Unteren Lias in der Sandgrube Dietz bei Pechgraben (Kulmbach, Oberfranken). *Dokumenta Naturae*, 117: 53–79.
- HAAS J., KOVÁCS S., GAWLICK H.-J., GRÁDINARU E., KARAMATA S., SUDAR M., PÉRO CS., MELLO J., POLÁK M., OGORELEC B. & BUSER S. 2011. Jurassic evolution of the tectonostratigraphic units of the Circum-Pannonian Region. *Jahrb. Geol. Bundesanst.*, 151: 281–384.
- HALLE T.G. 1908. Zur Kenntnis der Mesozoischen Equisetales Schwedens. *Kungl. Svens. Vetenskap. Handl.*, 43(1): 1–38.
- HAMMER O. & HARPER D.A.T. 2006. *Paleontological Data Analysis*. Blackwell Publishing, Oxford.
- HAMMER Ř., HARPER D.A.T. & RYAN P.D. 2001. PAST: Paleontological Statistics Software Package for Education and Data Analysis. *Palaeont. Electronica*, 4(1): 1–9.
- HARRIS T.M. 1926. The Rhaetic flora of Scoresby Sound, East Greenland. *Medd. Grønland*, 68: 45–148.
- HARRIS T.M. 1931. The Fossil Flora of Scoresby Sound East Greenland, 1: Cryptogams (exclusive of Lycopodiales). *Medd. Grønland*, 85(2): 1–102.
- HARRIS T.M. 1932a. The fossil flora of Scoresby Sound East Greenland, 2: Description of seed plants incertae sedis together with a discussion of certain Cycadophyte cuticles. *Medd. Grønland*, 85: 1–114.
- HARRIS T.M. 1932b. The Fossil Flora of Scoresby Sound East Greenland, Part 3: Caytoniales and Bennettitales. *Medd. Grønland*, 85(5): 1–133.
- HARRIS T.M. 1935. The fossil flora of Scoresby Sound East Greenland. Part 4: Ginkgoales, Coniferales, Lycopodiales and isolated fructifications. *Medd. Grønland*, 112(1): 1–176.
- HARRIS T.M. 1937. The fossil flora of Scoresby Sound East Greenland. Part 5: Stratigraphic relations of the plant bed. *Medd. Grønland*, 112(2): 1–114.
- HARRIS T.M. 1946. Liassic and Rhaetic plants collected in 1936–38 from East Greenland. *Medd. Grønland*, 114(9): 1–39.
- HARRIS T.M. 1953. The geology of the Yorkshire Jurassic flora. *Proc. Yorkshire Geol. Soc.*, 29(4): 63–71.
- HARRIS T.M. 1961. The Yorkshire Jurassic Flora. I: Thallophtya – Pteridophyta. Trustees of the British Museum, London.
- HARRIS T.M. 1964. The Yorkshire Jurassic Flora. II: Caytoniales, Cycadales & Pteridosperms. Trustees of the British Museum (Natural History), London.
- HARRIS T.M. 1969. The Yorkshire Jurassic Flora. III. Bennettitales. Trustees of the British Museum (Natural History), London.
- HARRIS T.M. 1979. The Yorkshire Jurassic Flora. V: Coniferales. Trustees of the British Museum, London.
- HARRIS T.M. & MILLER J. 1974. The Yorkshire Jurassic flora IV. Czekanowskiales. Trustees of the British Museum (Natural History), London.
- HARRIS T.M. & MILLINGTON W. 1974. The Yorkshire Jurassic flora IV. Ginkgoales. Trustees of the British Museum (Natural History), London.
- HATVANI I.G., KOVÁCS J., SZÉKELY I., KOVÁCSNÉ JAKUSCH P. & KORPONAI J. 2011. Analysis of long term water quality changes in the Kis-Balaton Water Protection System with time series, cluster analysis and Wilks' lambda distribution. *Ecological Engineering*, 37: 629–635.
- HERMAN A.B. & SPICER R.A. 1997. New quantitative palaeoclimate data for the Late Cretaceous Arctic: evidence for a warm polar ocean. *Palaeogeogr. Palaeoclimat. Palaeoecol.*, 128: 227–251.
- HESELBO S.P., MORGANS-BELL H.S., McELWAIN J.C., REES P. M., ROBINSON S.A. & ROSS C.E. 2003. Carbon-cycle perturbation in the Middle Jurassic and accompanying changes in the terrestrial palaeoenvironment. *Jour. Geol.*, 111: 259–276.
- HOLLAND S.M. 2008. Non-metric multidimensional scaling (MDS). R Development Core Team.
- HILL C.R., MOORE D.T, GREENSMITH J.T. & WILLIAMS R. 1985. Palaeobotany and petrology of a Middle Jurassic ironstone bed at Wrack Hills, North Yorkshire. *Proc. Yorkshire Geol. Soc.*, 45 (1985): 277–292.
- JANK M., MEYER C.A. & WETZEL A. 2006. Late Oxfordian to Late Kimmeridgian carbonate deposits of NW Switzerland (Swiss Jura): stratigraphical and palaeogeographical implications in the transition area between the Paris Basin and the Tethys. *Sediment. Geol.*, 186: 237–263.

- JARZYŃKA A. 2012 (unpubl.) The middle Jurassic flora of the Grojec clays – taxonomy and palaeoecology. PhD Theses. Archives W. Szafer Institute of Botany, Polish Academy of Sciences, Kraków (in Polish).
- JASPER K., HARTKOPF-FRODER C., FLAJS G. & LITTKER R. 2010. Palaeoecological evolution of Duckmantian wetlands in the Ruhr Basin (western Germany): A palynological and coal petrographical analysis. *Rev. Palaeobot. Palynol.*, 162: 123–145.
- JUNG W. 1974. Die Konifere *Brachyphyllum nepos* Saporta aus den Solnhofener Plattenkalke (unteres Untertithon), ein Halophyt. *Mitt. Bayer. Sta. atssamml. Paläont. hist. Geol.* 14: 49–58.
- KARASZEWSKI W. 1965. On Middle Liassic age of the flora from Chmielów, near Ostrowiec (Middle Poland) and its significance for the stratigraphy of continental Jurassic. *Kwart. Geol.*, 9(2): 261–270.
- KIRCHNER M. 1992. Untersuchungen an einigen Gymnospermen der Fränkischen Rhät-Lias-Grenzschichten. *Palaeontographica*, B, 224(1–3): 17–61.
- KNOBLOCH E. & MAI D.H. 1986. Monographie der Früchte und Samen in der Kreide von Mitteleuropa. Ústřední Ústav Geologický v Akademii, Československé Akademie, Praha.
- Van KONIJNENBURG-van CITTERT J.H.A. 2008. The Jurassic fossil plant record of the UK area. *Proc. Geol. Ass.*, 119: 59–72.
- Van KONIJNENBURG-van CITTERT J.H.A. & van der BURGH J. 1989. The flora from the Kimmeridgian (Upper Jurassic) of Culgower, Sutherland, Scotland. *Rev. Palaeobot. Palynol.*, 61: 1–51.
- Van KONIJNENBURG-van CITTERT J.H.A. & van der BURGH J. 1996. Review of the Kimmeridgian flora of Sutherland, Scotland, with reference to the ecology and in situ pollen and spores. *Proc. Geol. Assoc.*, 107: 97–105.
- Van KONIJNENBURG-van CITTERT J.H.A. & MEYER C.A. 1996. Plant remains from the Vellerat Formation (Oxfordian) of the Swiss Jura mountains. *Eclogae geol. Helv.*, 89(3): 1117–1136.
- Van KONIJNENBURG-van CITTERT J.H.A. & MORGANS H.S. 1999. The Jurassic flora of Yorkshire. *Palaeontological Association Field Guides to fossils* 8. Palaeontological Association, London.
- KOSTINA E.I. & HERMAN A.B. 2013. The Middle Jurassic flora of South Mongolia: composition, age and phytogeographic position. *Rev. Palaeobot. Palynol.*, 193: 82–98.
- KOVÁCS J.P., TANOS J., KORPONAI I., KOVÁCSNÉ SZÉKELY K., GONDÁR K., GONDÁR-SÓREGI I. & HATVANI G. 2012. Analysis of Water Quality Data for Scientists: 65–94. In: Voudouris K. & Voutsas D. (eds), *Water Quality Monitoring and Assessment Rijeka*. InTech Open Access Publisher, Budapest.
- KRASSER F. 1912. *Williamsonia* in Sardinien. *Sitzungsber. Akad. Wissensch. Wien*, 121: 943–973.
- KRASSER F. 1913. Die fossile Flora der Williamsonien Bergenden Juraschichten von Sardinien. *Anzeiger. Akad. Anz.*, 4: 31–36.
- KRASSER F. 1915. Männliche Williamsonien aus dem Sandsteinschiefer des unteren Lias von Steierdorf im Banat. *Denkschrift. Kaiser. Akad. Wissenschaft. Wien, Mathemat. Naturwissenschaft. Klasse*, 93: 1–14.
- KRASSER F. 1920. Doggerflora von Sardinien. *Sitzungsber. Akad. Wissenschaft. Wien*, 129: 1–26.
- KRÄUSEL R. 1943. *Furcifolium longifolium* Seward n. comb., eine Ginkgophyte aus dem Solnhofener Jura. *Senckenbergiana*, 26(5): 426–433.
- KRÄUSEL R. 1958. Die Juraflora von Sassendorf bei Bamberg. I. Sporenpflanzen. *Senckenbergiana lethaea*, 39: 67–103.
- KUHN O. 1961. Die Tier- und Pflanzenwelt des Solnhofener Schiefers Mit vollständigem Arten- und Schriftenverzeichnis. *Geologica Bavarica* 48: 1–68.
- KUSTATSCHER E., Van KONIJNENBURG-van CITTERT J.H.A. & ROGHI G. 2010. Macrofloras and palynomorphs as possible proxies for palaeoclimatic and palaeoecological studies: A case study from the Pelsonian (Middle Triassic) of Kuhwiesenkopf/Monte Pra della Vacca (Olang Dolomites, N-Italy). *Palaeogeogr. Palaeoclimat. Palaeoecol.*, 290: 71–80.
- LEMOIGNE Y. 1968. Paléoflore à Cupressales dans le Trias Rhetien du Cotentin. *Compt. Rend. Ac. Sci.*, 264: 715–718.
- LISZKOWSKI J. 1972. Pierwsze górnourajskie stanowisko paleoflorystyczne w Polsce. *Przeegl. Geol.*, 8–9: 388–393.
- LUNDBLAD A.B. 1950. Studies in the Rhaeto-Liassic floras of Sweden. I. Pteridophyta, Pteridospermae and Cycadophyta from the mining district of NW Scania. *Kungl. Svens. Vetenskapsakad. Handl., Fjärde serien*, 1(8): 1–82.
- MAKAREWICZÓWNA A. 1928. Etude sur la flore fossile du lias inférieur des environs d'Ostrowiec. *Travaux de la Société des Science et des Letters de Wilno, Travaux de L'Institut de Géologie de l'Université de Wilno*, 4(3): 1–49.
- MANUM S.B., BOSE M.N. & VIGRAN J.O. 1991. The Jurassic flora of Andoya, northern Norway. *Rev. Palaeobot. Palynol.*, 68: 233–256.
- McELWAIN J.C., POPA M.E., HESSELBO S.P., HAWORTH D.M. & SURLYK F. 2007. Macroecological responses of terrestrial vegetation to climatic and atmospheric change across the Triassic/Jurassic boundary in East Greenland. *Paleobiology*, 33: 547–573.
- MORTON N. 1965. The Bearreraig Sandstone Series (Middle Jurassic) of Skye and Raasay. *Scot. Jour. Geol.*, 1(2): 189–216.
- NAGY I.Z. 1961. Liassic remains of the Mecsek Mountains. *Ann. Inst. Geol. Publ. Hung.*, 49(2): 609–613.
- NATHORST A. 1876. Bidrag till Sveriges fossila flora. *Kungl. Svens. Vetenskapsakad. Handl.*, 14(3): 1–82.

- NATHORST A. 1878a. Beitrage zur fossilen Flora Schwedens. Über winige fossile Pflanzen von Palsjö in Schonen. Stuttgart.
- NATHORST A. 1878b. Om floran i Skanes Kolförande Bildingar. I. Floran vid Bjuf. P.A. Norstedt & Söner, Stockholm.
- NATHORST A. 1878c. Om floran i Skanes Kolförande Bildingar. II. Floran vid Höganäs och Helsingborg. P.A. Norstedt & Söner, Stockholm.
- PACYNA G. 2013. Critical review of research on the Lower Jurassic flora of Poland. *Acta Palaeobot.*, 53(2): 141–163. DOI: 10.2478/acpa-2013-0015.
- PACYNA G. & ZDEBSKA D. 2011. Nowe dane o rodzaju *Ixostrobus* Raciborski 1892 (nagozalążkowe, Czekanowskiales?) z dolnej jury Gromadzie (Góry Świętokrzyskie): 33–39. In: Matyja B.A., Wierzbowski A. & Ziółkowski P. (eds), *Jurassica IX*, Materiały konferencyjne, Artykuły, Małogoszcz, 06–08.09.2011. Polskie Towarzystwo Geologiczne, Polska Grupa Robocza Systemu Jurajskiego.
- PHILIPPE M., THÉVENARD F., BARALE G., GUIGNARD G. & FERRY S. 1998. Causses (SE France) Middle Bathonian Flora and phytocoenosis of France at that time. *Palaeogeogr., Palaeoclimat., Palaeoecol.*, 143(1–3): 135–158.
- PIEŃKOWSKI G. 2004. The epicontinental Lower Jurassic of Poland. *Pol. Geol. Inst. special Papers*, 12: 1–122.
- PIEŃKOWSKI G., SCHUDACK M.E., BOSAK P., ENAY R., FELDMAN-OLSZEWSKA A., GOLONKA J., GUTOWSKI J., HERNGREEN G.F.W., JORDAN P., KROBICKI M., LATHULIERE B., LEINFELDER R.R., MICHALIK J., MONNING E., NOE-NYGAARDN., PALFY J., PINT A., RASSER W., REISDORF A.G., SCHMID D.U., SCHWEIGERTG., SURLYK F., WETZEL A. & WONG T.E. 2008. Jurassic: 823–922. In: McCann T. (ed.), *The Geology of Central Europe*, vol 2. Geol. Soc., London.
- PODANI J. & MIKLÓS I. 2002. Resemblance coefficients and the horseshoe effect in principal coordinates analysis. *Ecology*, 83: 3331–3343.
- POPA M.E. 1997a. Liassic ferns from the Steierdorf Formation, Anina, Romania. In: Herngreen G.F.W. (ed.), *Proceedings 4th European Palaeobotanical and Palynological Conference*. Meded. Nederl. Inst. Toegep. Geowetens. TNO, 58: 139–148.
- POPA M.E. 1997b. Corystospermal pteridosperms in the Liassic continental deposits of Romania. *Acta Palaeont. Rom.*, 81–87.
- POPA M.E. 1998. The Liassic continental flora of Romania: Systematics, Stratigraphy and Paleocology. *Acta Bot. Horti Bucurestensis* 1997–1998, 177–184.
- POPA M.E. 2000a (unpubl.). Early Jurassic land flora of the Getic Nappe. PhD Thesis, Archives of the University of Bucharest.
- POPA M.E. 2000b. Aspects of Romanian Early Jurassic palaeobotany and palynology. Part III. *Phytostratigraphy of the Getic Nappe. Acta Palaeont. Rom.*, 2: 377–386.
- POPA M.E. 2009. Late Palaeozoic and Early Mesozoic continental formations of the Reșița Basin. Editura Universitii din Bucuresti, Bucharest.
- POPA M.E. & Van KONIJNENBURG-van CITTERT J.H.A. 2006. Aspects of Romanian Early-Middle Jurassic palaeobotany and palynology. Part VII. Successions and floras. *Progr. Nat. Sci.*, 16: 203–212.
- POTT C. & McLOUGHLIN S. 2009. Bennettitalean foliage in the Rhaetian – Bajocian (latest Triassic – Middle Jurassic) floras of Scania, southern Sweden. *Rev. Palaeobot. Palynol.*, 158: 117–166.
- PÜSPÖKI Z., FORGÁCS Z., KOVÁCS ZS., KOVÁCS E., SOÓS-KABLÁR J., JÁGER L., PUSZTAFALVI J., KOVÁCS Z., DEMETER G., MCINTOSH R.W., BUDAY T., KOZÁK M., and VERBÓCI J. 2012. Stratigraphy and deformation history of the Jurassic coal bearing series in the Eastern Mecsek (Hungary) – *Int. Journ. of Coal Geology* 102(2012): 35–51.
- RABINOWITZ G.B. 1975. An introduction to Nonmetric Multidimensional Scaling. *Amer. Jour. Political Sci.*, 19: 343–390.
- RACIBORSKI M. 1889. O obecnym stanie mych badań flory kopalnej ogniotrwałych glinek krakowskich. *Spraw. Kom. Fizjogr.*, 23: 129–140.
- RACIBORSKI M. 1891a. Flora retycka północnego stoku Gór Świętokrzyskich. *Rozpr. Wydz. Mat.-Przyr. Akad. Umiej.*, 23: 292–326.
- RACIBORSKI M. 1891b. Ueber die rhätische Flora am Nordabhange des polnischen Mittelgebirges. *Anz. Akad. Wissenschaften Krakau*, Februar 1891: 64–68.
- RACIBORSKI M. 1892a. Przyczynek do flory retyckiej Polski. *Rozpr. Wydz. Mat.-Przyr. Akad. Umiej.*, 22: 345–360.
- RACIBORSKI M. 1892b. Beiträge zur Kenntnis der rhaetischen Flora Polens. *Anzeiger der Akademie der Wissenschaften in Krakau*, December 1891: 375–379.
- RACIBORSKI M. 1894. Flora kopalna ogniotrwałych glinek krakowskich. Część I. Rodniowce (Archaeogniatae). *Pam. Mat.-Przyr. Akad. Umiej.*, 18: 1–101.
- R DEVELOPMENTCORE TEAM 2011. R: A language and environment for statistical computing and graphics. R Foundation for Statistical Computing, Vienna, Austria. Available from: <http://www.R-project.org/>. Accessed September 2014.
- REES P.M., ZIEGLER A.M. & VALDES. P.J. 2000. Jurassic phytogeography and climates: new data and model comparisons: 297–318. In: Huber B.T., Macleod K.G. & Wing S.L. (eds), *Warm climates in earth history*. Cambridge Univ. Press, Cambridge.
- REYMANÓWNA M. 1963. The Jurassic flora from Grojec near Cracow in Poland. Part I. *Acta Palaeobot.*, 4(2): 9–48.

- REYMANÓWNA M. 1973. The Jurassic flora from Grojec near Kraków in Poland. Part II. Caytoniales and anatomy of *Caytonia*. *Acta Palaeobot.*, 14(2): 45–87.
- REYMANÓWNA M. 1985. *Mirovia szaferei* gen. et sp. nov. (Ginkgoales) from the Jurassic of the Kraków region, Poland. *Acta Palaeobot.*, 25(1, 2): 3–12.
- REYMANÓWNA M. 1992. Two conifers from the Liassic flora from Odrowąż in Poland: 33. Pan-European Palaeobotanical Conference 1991 Palaeovegetational development of Europe, Abstract Volume, Natural History Museum Vienna, Austrian Commission for UNESCO under the auspices of IOP, Vienna.
- REYMANÓWNA M., WCISŁO-LURANIEC E. & ICHAS-ZIAJA J. 1987. The Liassic flora of the Holy Cross Mts: 46–54. 14 International Botanical Congress Berlin, Guide to excursion no. 24, From the Jurassic to the Holocene: the palaeoflora and palaeoecology of W and S Poland.
- RÖPER M. & ROTHGAENGER M. 1997. Zur Altersdatierung und Paläoökologie der Oberjura-Plattenkalke von Brunn/Oberpfalz (Oberes Kimmeridium/Oberpfalz). *Acta Albertina Ratisbonensia*, 50(2): 77–122.
- SALARD-CHEBOLDIAEFF M. & VOZENIN-SERRA C. 1984. Palynoflore et taphoflore jurassiques de Sardaigne centre-orientale. *Rev. Paléobiol.*, Vol. spécial, 1(1): 193–197.
- SAMSONOWICZ J. 1929. Cechsztyń, trias i lias na północnym zboczu Łysogór (summary: Les Zechstein, le Trias et le Liassique sur le versant nord du Massif de S-te Croix). *Spraw. Pol. Inst. Geol.*, 5(1–2): 1–281.
- SAPORTA G. 1873–1891. *Paléontologie française (Plantes Jurassiques)*. Ser. 2, vol. I–IV. G. Masson, Paris.
- SCANU G.G., KUSTATSCHER E. & PITTAU P. 2012. The Jurassic plant fossils of the Lovisato Collection: preliminary notes. *Boll. Soc. Paleontol. Ital.*, 51(2): 71–84.
- SCANU G.G., KUSTATSCHER E. & PITTAU P. 2014. The Jurassic Flora of Sardinia – a new piece in the palaeobiogeography puzzle of the Middle Jurassic. *Rev. Palaeobot. Palynol.*, in press.
- SCHENK A. 1867. *Die fossile Flora der Grenzschichten des Keupers und Lias Frankens*. C. W. Kreidel's Verlag, Wiesbaden.
- SCHIMPER W. 1869. *Traité de Paléontologie Végétale ou la Flore du Monde Primitif dans ses Rapports avec les Formations Géologiques et la Flore du Monde Actuel*, vol.1. J.B. Baillié et Fils, Paris.
- SEMAKA A. 1962a. Flora Liassic de la Anina (Banat). *Anuarul Comitetului Geologic*, 32: 527–569.
- SEMAKA A. 1962b. Flora Liassic de la Doman (Banat). *Dri de Seamale edinelor Comitetului Geologic*, 43: 125–242.
- SEMAKA A. 1965. Zur Kenntnis der *Nilssonia orientalis*-Flora in den Südkarpathen. *Acta Palaeobot.*, 6(2): 27–39.
- SEMAKA A. 1970. Geologisch-Palaeobotanische Untersuchungen in S.O. Banaten Danubikum. *Memorii*, 11: 1–79.
- SEWARD A.C. 1900. The Jurassic flora I. The Yorkshire coast. *Catalogue of the Mesozoic Plants in the Department of Geology, British Museum (Natural History)* 3: 1–341.
- SEWARD A.C. 1911. The Jurassic flora of Sutherland. *Trans. Roy. Soc. Edinb.*, 47(23): 643–709.
- SPICER R.A. & HILL C.R. 1979. Principal components and correspondence analyses of quantitative data from a Jurassic plant bed. *Rev. Palaeobot. Palynol.*, 28: 273–297.
- STEINTHORSDDOTTIR M., BACON K.L., POPA M.E., BOCHNER L. & MCELWAIN J.C. 2011. Bennettitalean leaf cuticle fragments (here *Anomozamites* and *Pterophyllum*) can be used interchangeably in stomatal frequency-based palaeo-CO<sub>2</sub> reconstructions. *Palaeontology*, 54: 867–882.
- THÉVENARD F. & BARBACKA M. 2000. Two leaf morphotypes of the *Pagiophyllum peregrinum* (Lindley et Hutton) Schenk emend Kendall from the Mecsek Mountains, Hungary. *Acta Palaeobot.*, Suppl. 2: 219–231.
- THÉVENARD F., PHILIPPE M. & BARALE G. 1995. Le delta hettangien de La Grandville (Ardennes, France): étude paléobotanique et paléocéologique. *Géobios*, 28(2): 145–162.
- TORNQUIST A. 1904. Beiträge zur Geologie der Westlichen Mittelmeerland. In: *Die Pflanzen des Mittelsjurassischen Sandsteines Ost-sardinien*. *Neu. Jahrb. Mineral., Geol. Paläontol.*, 20: 149–158.
- VAKHRAMEEV V.A. 1970. Pattern of distribution and Palaeoecology of Mesozoic conifers Cheirolepidiaceae. *Paleontol. Journ.*, 1(1970): 19–34.
- VAKHRAMEEV V.A. 1991. Jurassic and Cretaceous floras and climates of the Earth. Cambridge University Press, Cambridge.
- WANG Y., MOSBRUGGER V. & ZHANG H. 2005. Early to Middle Jurassic vegetation and climatic events in the Qaidam Basin, Northwest China. *Palaeogeogr. Palaeoclimat. Palaeoecol.*, 224(1–3): 200–216.
- WCISŁO-LURANIEC E. 1985. New details of leaf structure in *Bilsdalea dura* Harris (Coniferae) from the Jurassic of Kraków, Poland. *Acta Palaeobot.*, 25(1,2): 13–20.
- WCISŁO-LURANIEC E. 1989. *Pseudotorellia tenuis* sp. nov. (Ginkgoales) from the Jurassic of the Kraków region. *Acta Palaeobot.*, 29(1): 207–211.
- WCISŁO-LURANIEC E. 1991. The Lower Liassic flora from Odrowąż in Poland and its ecosystem. Fifth Symposium on Mesozoic Terrestrial Ecosystems and Biota. Extended Abstracts. Contributions from the Paleontological Museum University of Oslo, 364: 69–70.
- WCISŁO-LURANIEC E. 1992. Flora from Odrowąż in Poland – a typical Lower Liassic European flora: 331–335. In: J. Kovar-Eder (ed.), *Palaeovegetational*

- development in Europe and regions relevant to its palaeofloristic evolution. Proc. Pan. Eur. Palaeobot. Conf. Vienna, 19–23 Sept. 1991.
- WCISŁO-LURANIEC E. 2001. Porównanie liasowej flory z Odrowąża (Sołtyków) z innymi florami europejskimi tego samego wieku: 32. Polskie Towarzystwo Geologiczne. Państwowy Instytut Geologiczny. Polska Grupa Robocza Systemu Jurajskiego – Jurassica II Spotkanie, 27–29.09.2001. Starachowice.
- WCISŁO-LURANIEC E. & BARBACKA M. 2000. *Ixostrobus grenlandicus* Harris from Hungarian Liassic with reference to revision of the genus *Ixostrobus* from Poland. Acta Palaeobot., 40(1): 35–38.
- WEBER R. 1968. Die fossile Flora der Rhät-Lias-Übergangsschichten von Bayreuth (Oberfranken) unter besonderer Berücksichtigung der Coenologie. Erlanger Geol. Abhandl., 72: 1–73.
- WELLNHOFER P. 2008. *Archaeopteryx*. Der Urvogel von Solnhofen. Verlag Dr. Friderich Pfeil. München.
- WESLEY A. 1956. Contribution to the knowledge of the flora of the Grey Limestone of Veneto, I. Memorie Università Padova, 19: 1–69.
- WESLEY A. 1958. Contribution to the knowledge of the flora of the Grey Limestone of Veneto, II. Memorie Università Padova, 21: 1–57.
- WESLEY A. 1966. The fossil flora of the grey limestones of Veneto, Northern Italy and its relationships to the other European floras of similar age. Palaeobotanist, 14(1–3): 124–130.
- WESLEY A. 1974. On the bennettitalean remains from the Lias of northern Italy: 66–71. In: Bose M.N. (ed.), Symposium on morphological and stratigraphical palaeobotany. Birbal Sahni Institute of Palaeobotany, Lucknow, Special Publication 2.
- De ZIGNO A. 1856–68. Flora Fossilis Formationis Oolithicae. Le piante fossili dell'Oolite. Vol. 1. Tipografia del seminario, Padova.
- De ZIGNO A. 1873–85. Flora Fossilis Formationis Oolithicae. Le piante fossili dell'Oolite. Vol. 2. Tipografia del seminario, Padova.