

SEQUENCE-BASED SPECIES DELIMITATION IN THE BALKAN *BYTHINELLA* MOQUIN-TANDON, 1856 (GASTROPODA: RISSOOIDEA) WITH GENERAL MIXED YULE COALESCENT MODEL

ANDRZEJ FALNIEWSKI, MAGDALENA SZAROWSKA

Department of Malacology, Institute of Zoology, Jagiellonian University, Gronostajowa 9, 30-387 Kraków, Poland (email: andrzej.falniewski@uj.edu.pl)

ABSTRACT: Three sets of sequences of cytochrome oxidase subunit I (COI) from a spring snail *Bythinella* representing all the Balkans (63 sequences), Greece (78 sequences), and Romania (136 sequences), were used to infer maximum likelihood ultrametric trees. The trees were used to run General Mixed Yule Coalescent (GMYC) analyses assuming single threshold and multiple threshold models. For the single threshold model the threshold value was identical (0.00248 substitution per site) for each data set; for the multiple one the threshold value varied widely for the Balkan tree. Despite the same threshold value, the distinctness of the same lineages varied among trees, mostly due to differences in the models of substitution inferred for each set of sequences, but also due to different proportions of singletons in the data sets. The inferred numbers of ML entities, theoretically equalling the numbers of species, compared with all the biological evidence available so far, were overestimated in Romanian and Greek trees, but realistic in the tree for all the Balkans.

KEY WORDS: *Bythinella*, Balkans, COI, species delimitation

INTRODUCTION

Bythinella, minute freshwater snails, common inhabitants of springs, are found from southern Poland to the Mediterranean, and from Spain to Asia Minor. This widely distributed genus has been a common subject of study, but where the delimitation of *Bythinella* species is concerned, it is enigmatic. RADOMAN (1976, 1983) considered that shell characters were useful at the species level, while BOETERS (1973) and JUNGBLUTH & BOETERS (1977) considered soft-part anatomy to be crucial for species delimitation. However, considering wide morphological variability of shell and soft parts in this genus, none of the characters of shell or soft-part anatomy appears to be useful for clear delimitation and recognition of species (GIUSTI & PEZZOLI 1977, 1980, FALNIEWSKI 1987, 1992, BICHAIN et al. 2007a, b). Recently, molecular studies on *Bythinella* (BICHAIN et al. 2007a, HAASE et al. 2007, BENKE et al. 2009, FALNIEWSKI et al. 2009a, b, c, 2012, FALNIEWSKI & SZAROWSKA 2011) shed some light on the problem

of species delimitation in this genus, but it is still far from resolved.

There are only a few cases known where morphological differences are paralleled by molecular differences in sympatric taxa of *Bythinella*. In these cases the species distinctness of the taxa is doubtless (FALNIEWSKI et al. 2009b, FALNIEWSKI & SZAROWSKA 2011). Otherwise taxonomic decisions at the species level are controversial.

Recently PONS et al. (2006) introduced a procedure for delimiting species from sequence data, without the prior definition of taxon and/or population, usually defined geographically. The procedure is based on analyses of branch lengths on a DNA tree for tests of species boundaries, assuming the difference in branching rates at the level of species and populations, determined between species by speciation and extinction rates (PONS et al. 2006), and within a species reflecting coalescence processes. The technique combines the equations that describe processes of lin-

age birth at the species level (assuming the simplest model of YULE 1924) with coalescence models within species, and applies a likelihood ratio test to assess the fit of branch lengths. This enables the location of shift in dynamics of branching associated with species boundary. Thus the technique estimates species boundaries directly from branching rates in mixed population phylogenetic trees without the need for any prior definition of populations or species. The procedure is known as General Mixed Yule Coalescent (GMYC) procedure (“general”, because it has relaxed some biologically rather unrealistic assumption of the MYC model).

The GMYC procedure has been applied in several studies (AHRENS et al. 2007, FONTANETO et al. 2007, 2009, BARRACLOUGH et al. 2009, JOUSSELIN et al.

2009, LELIAERT et al. 2009, PAPADOPOULOU et al. 2009a, b, c, YASSIN et al. 2009, ADOLFSSON et al. 2010, BODE et al. 2010, BRANDAO et al. 2010, CICCONARDI et al. 2010, CRAWFORD et al. 2010, GATTOLLIAT & MONAGHAN 2010, HENDRICH et al. 2010, PAGES et al. 2010, ZALDIVAR-RIVERO et al. 2010, VUATAZ et al. 2011). Some of the studies concerned molluscs (NEKOLA et al. 2009, LORION et al. 2010, POWELL et al. 2011). Reliability of species delimited by GMYC has been discussed (e.g. LOHSE 2009, PAPADOPOULOU et al. 2009c), and developed (MONAGHAN et al. 2009). The aim of the present paper is to apply GMYC procedure to *Bythinella* data from our previous papers (FALNIOWSKI et al. 2009a, b, 2012, FALNIOWSKI & SZAROWSKA 2011), since the species-level taxonomy of this genus remains an enigma.

MATERIAL AND METHODS

All the sequences of cytochrome oxidase subunit I (COI) considered in the present study are listed in our previous publications on *Bythinella* from Romania (FALNIOWSKI et al. 2009b), Bulgaria (FALNIOWSKI et al. 2009a) and Greece (FALNIOWSKI & SZAROWSKA 2011), and on the radiation of the genus in the Balkans (FALNIOWSKI et al. 2012). See the above papers for the description of the localities, collection and molecular techniques, and GenBank Accession numbers of the used sequence.

The first tree, inferred for the Balkans (FALNIOWSKI et al. 2012) consisted of 63 COI sequences (Table 1). Two species represented the outgroup; 34 sequences belonged to 10 putative species; all six species from Romania were represented by one sequence each; the ten putative species from Greece were represented by one or two haplotypes each. The second tree, inferred for Greece (FALNIOWSKI & SZAROWSKA 2011), consisted of 78 haplotypes (Table 1); two of the haplotypes represented the outgroup, 5 represented *Bythinella* species from the outside of Greece, and 71 sequences represented all the haplotypes found in Greece (from 302 sequences analysed). The third tree, inferred for the Romanian *Bythinella* (FALNIOWSKI et al. 2009b), consisted of all 136 sequences (representing 10 outgroup species, five species of *Bythinella* from the outside of Romania, and 23 haplotypes of the Romanian *Bythinella*); thus the tree included Romanian haplotypes represented more than once in the data set. Such a design of data sets was intended to compare the behaviour of the technique with (slightly) different data. All the trees are presented with an outgroup species, to show the relative length of the branches, but in each case an ultrametric tree (i. e. with molecular clock enforced) was computed without the outgroup taxa.

For each maximum likelihood analysis, we used the best fit model of sequence evolution found by

ModelTest v3.06 (POSADA & CRANDALL 1998, POSADA 2003). Following the recommendations of SOBER (2002) and POSADA & BUCKLEY (2004), we chose the best model for each dataset using the Akaike Information Criterion (AKAIKE 1974). We performed ML analyses in PAUP*4.0b10 (SWOFFORD 2002) and used an heuristic search strategy with stepwise addition of taxa, 10 random-sequence addition replicates, and tree-bisection-reconnection (TBR) branch swapping (SWOFFORD et al. 1996). For each of the datasets (Romania, Greece, and whole Balkans) phylogeny was inferred with and without an enforced molecular clock, to perform the Likelihood Ratio Test (LRT) (NEI & KUMAR 2000, POSADA 2003) with PAUP, to test the molecular clock hypothesis for COI. To calibrate the trees – thus to give some impression of the time frame of the inferred process of speciation – data from WILKE (2003) were applied. The ultrametric trees of *Bythinella* (with molecular clock enforced) were used for GMYC analysis (PONS et al. 2006, MONAGHAN et al. 2009).

This method uses a maximum likelihood approach to optimize the shift in the branching patterns of the gene tree from interspecific branches (assuming Yule’s model: YULE 1924) to intraspecific branches (assuming neutral coalescent). It optimizes the ML value of a threshold, such that the nodes before the threshold are identified as speciation events, and the nodes beyond the threshold value are interpreted as reflecting coalescent processes. The method was applied to the ultrametric trees inferred with PAUP*4.0b10 (SWOFFORD 2002), and GMYC procedure was run, using the package R v.2.8.0 (R DEVELOPMENT CORE TEAM 2008), with the extension APE v.2.6.2 (PARADIS et al. 2004, PARADIS 2006), applying the code provided by Dr. TIM BARRACLOUGH.

The numbers of lineages and likelihoods were plotted against time (reflected by the number of substitutions per site), and a threshold between

speciation and coalescence was fitted. A unique species/population split for a particular time (single threshold) may not reflect the real diversification for all the lineages, especially in large trees, thus we also performed analysis allowing multiple, independent thresholds over time across the tree (option multiple). Chi-square tests of significance of inferred clus-

ters (null model assuming a uniform branching pattern) were performed. Support limits for the number of clusters were estimated from the likelihood surface for the time of transition between phases. For each of the three datasets, and each of the two GMYC models (single vs. multiple) the analysis was run three times.

RESULTS

In total, 63 COI sequences for the whole Balkans, 78 for Greece and 136 for Romania (Table 1) were analysed. The models inferred for each of the three trees with Akaike Information Criterion and ModelTest are presented in Table 1. Molecular clock hypothesis was rejected for the trees representing the Balkans and Romania, but not rejected for Greece (Table 1), in which the calibration point was presented (Fig. 2).

PAUP* found 71 ultrametric trees for the Balkans, 490 for Greece, and 1,002 for Romania (Table 2). Strict consensus trees computed with PAUP* showed that for each data set the trees did not differ in deeper branches, before the threshold values were inferred. Nevertheless, in each set of trees the analysis was run on ten randomly chosen trees, with the same results for a given set of trees. Thus, the results of the GMYC analysis are presented on one tree for the Balkans (Fig. 1), one for Greece (Fig. 2), and one for Romania (Fig. 3).

The results of the GMYC analysis (Table 2) rejected the null hypothesis of a uniform branching pattern ($p = 0.0000$) for both single and multiple thresholds. The ML values of the GMYC model assuming a single and multiple threshold were similar (Table 2). The likelihood values for the Balkans, even for the

single threshold model (Fig. 4), suggested at least two threshold values. The inferred threshold time for the model assuming single threshold was the same (0.00248 substitutions per site) for all three trees (Table 2). It has to be noted that for the Balkans, in one run another value (0.00496) was found.

For the GMYC model assuming multiple thresholds (Table 2, Fig. 4) the same threshold was found in each of the trees. However, yet another value (0.00095) was found for Greece, and two other values (0.00187 and 0.02303) were inferred for the Balkans. The threshold values were plotted in the trees (Figs 1–3). The number of ML clusters for each tree was higher for the multiple threshold model (Table 2): 8, 9 and 35, respectively, vs. 6, 8 and 23 (Table 2). The highest numbers were found in the Romanian tree. For recognition of species more informative is the number of ML entities. This is the number of inferred lineages at presumably species level, including all the clusters as well as all the singletons. The number of ML entities (68) was the same for the single and multiple threshold model for the Greek tree (Table 2), slightly higher (55 vs. 53) for the multiple threshold model for the Romanian tree (Table 2), but much lower (27 vs. 38) for the multiple threshold model for the Balkan tree (Table 2, Fig. 4).

Table 1. Models of COI evolution selected with PAUP*, ModelTest and AIC

	Balkans	Greece	Romania
number of sequences	63	78	136
model selected	GTR + I + Γ	GTR + I + Γ	TrN + I + Γ
base frequencies: A, C	0.3409, 0.2163	0.3164, 0.1920	0.3428, 0.1603
G, T	0.1225, 0.3204	0.1349, 0.3566	0.1190, 0.3779
substitution rate matrix	[A–C] = 272.8169 [A–G] = 4222.1479 [A–T] = 206.2349 [C–G] = 438.3951 [C–T] = 2715.1609 [G–T] = 1.0000	[A–C] = 35.2722 [A–G] = 641.8149 [A–T] = 25.0159 [C–G] = 33.1934 [C–T] = 333.2993 [G–T] = 1.0000	[A–C] = 1.0000 [A–G] = 8.9136 [A–T] = 1.0000 [C–G] = 1.0000 [C–T] = 17.1773 [G–T] = 1.0000
invariable sites prop. (I)	0.6519	0.6007	0.5646
Γ shape parameter α	2.5072	0.9321	0.9188
LRT test	$p = 0.0230$	$p = 0.0759$	$p = 0.0295$
molecular clock	rejected	not rejected	rejected

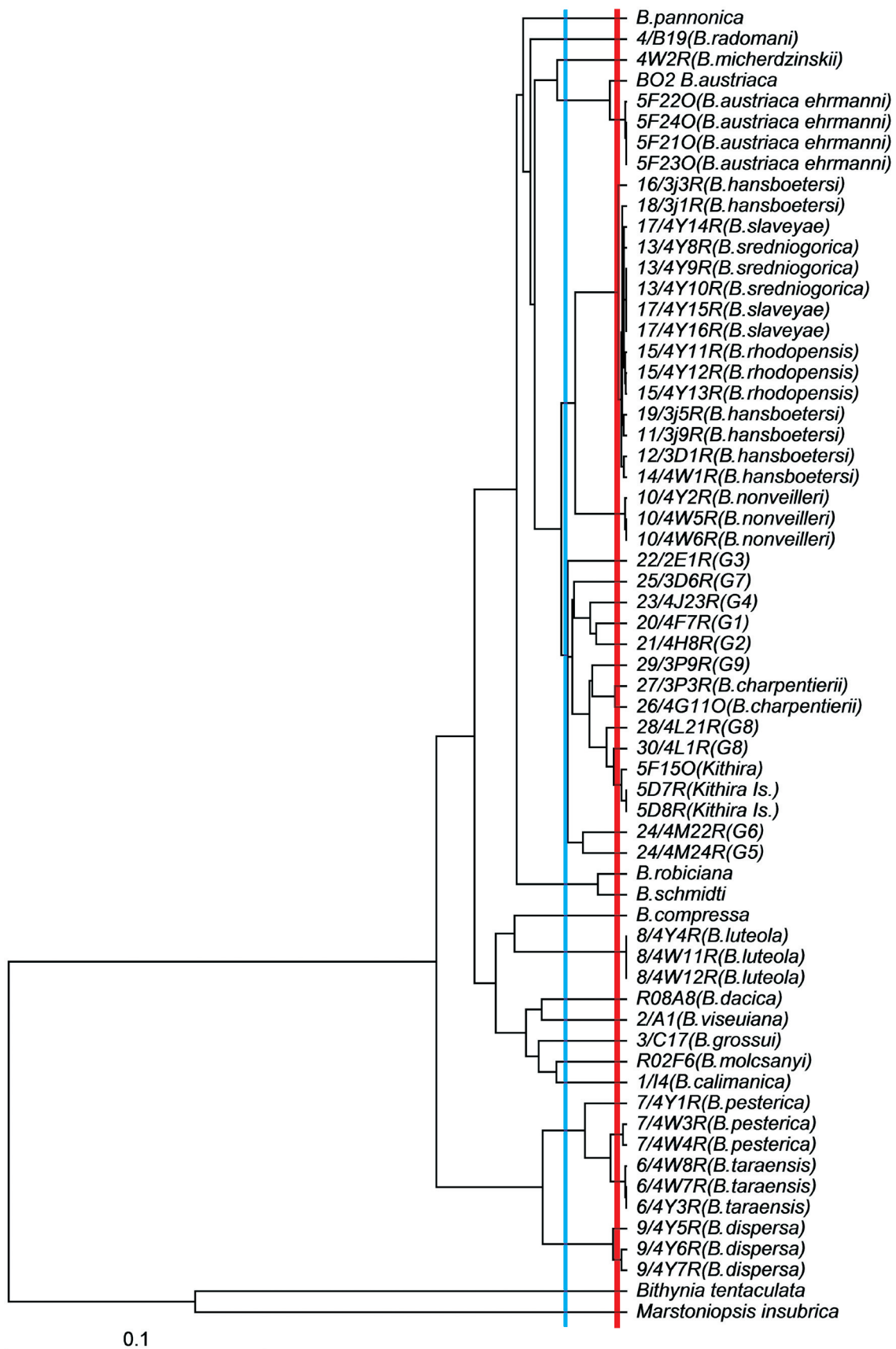


Fig. 1. Ultrametric tree inferred for all Balkan *Bythinella* (FALNIOWSKI et al. 2012); threshold value for single threshold model given in red, one of threshold values computed with multiple threshold model given in blue; for locality numbers/sequences coding see FALNIOWSKI et al. (2012)

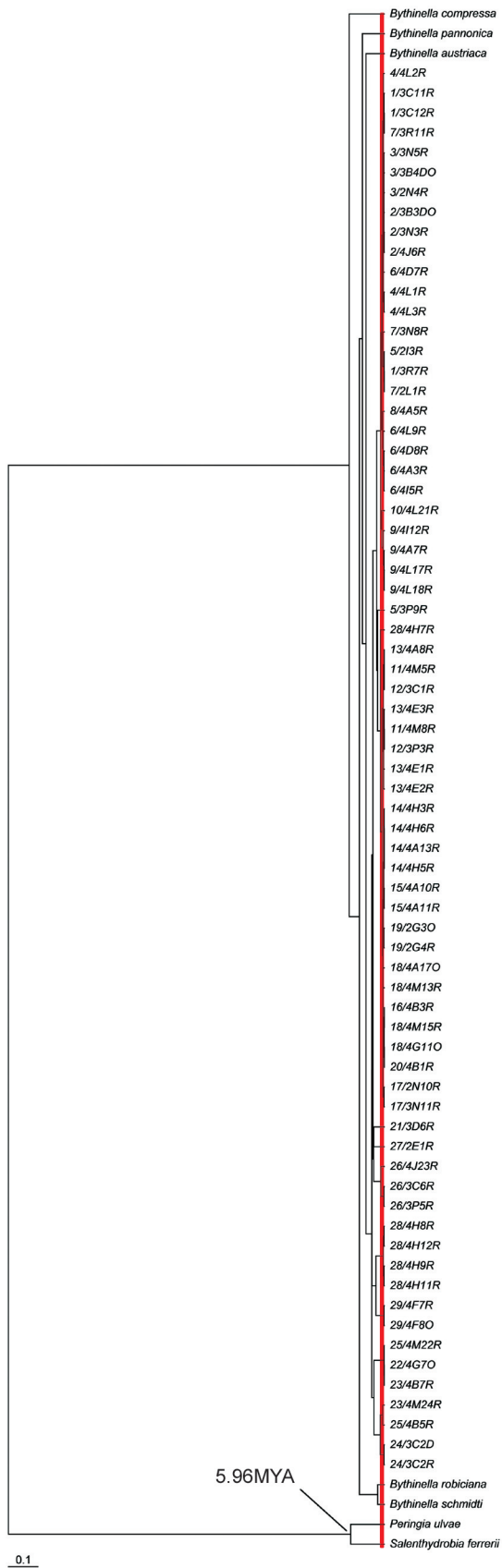


Fig. 2. Ultrametric tree inferred for Greek *Bythinella* (FALNIOWSKI & SZAROWSKA 2011); threshold value given in red; for localities numbers/sequences coding see FALNIOWSKI & SZAROWSKA (2011)

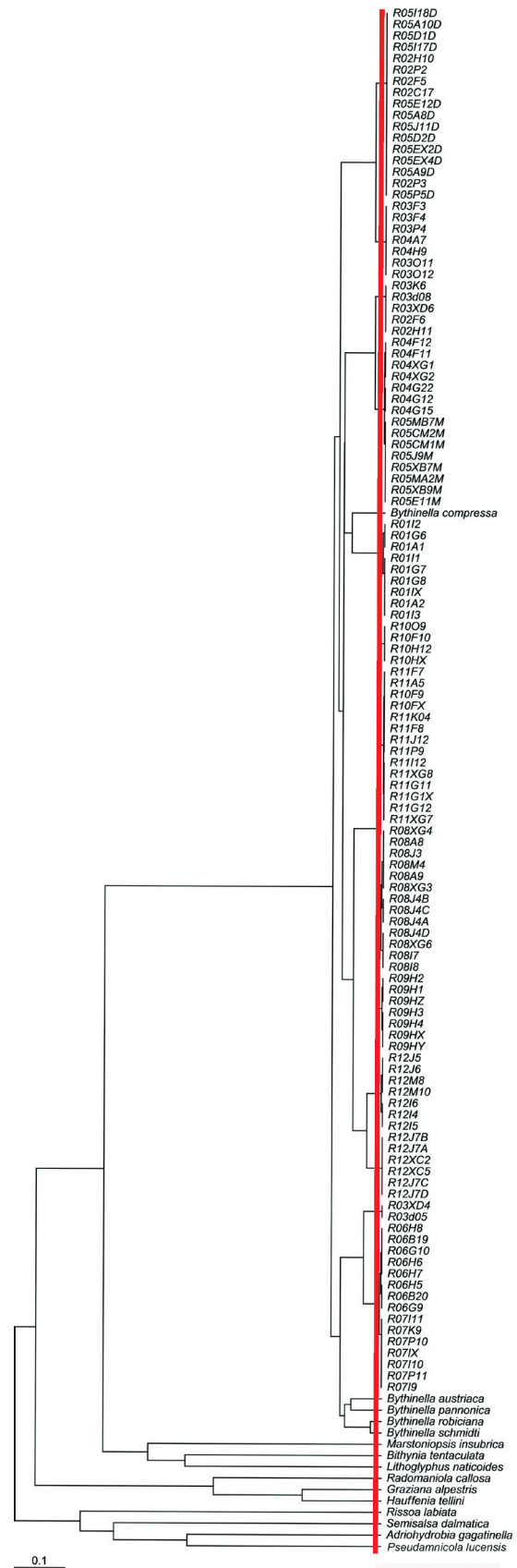


Fig. 3. Ultrametric tree inferred for all Romanian *Bythinella* (FALNIOWSKI et al. 2009b); threshold value given in red; for localities numbers/sequences coding see FALNIOWSKI et al. (2009b)

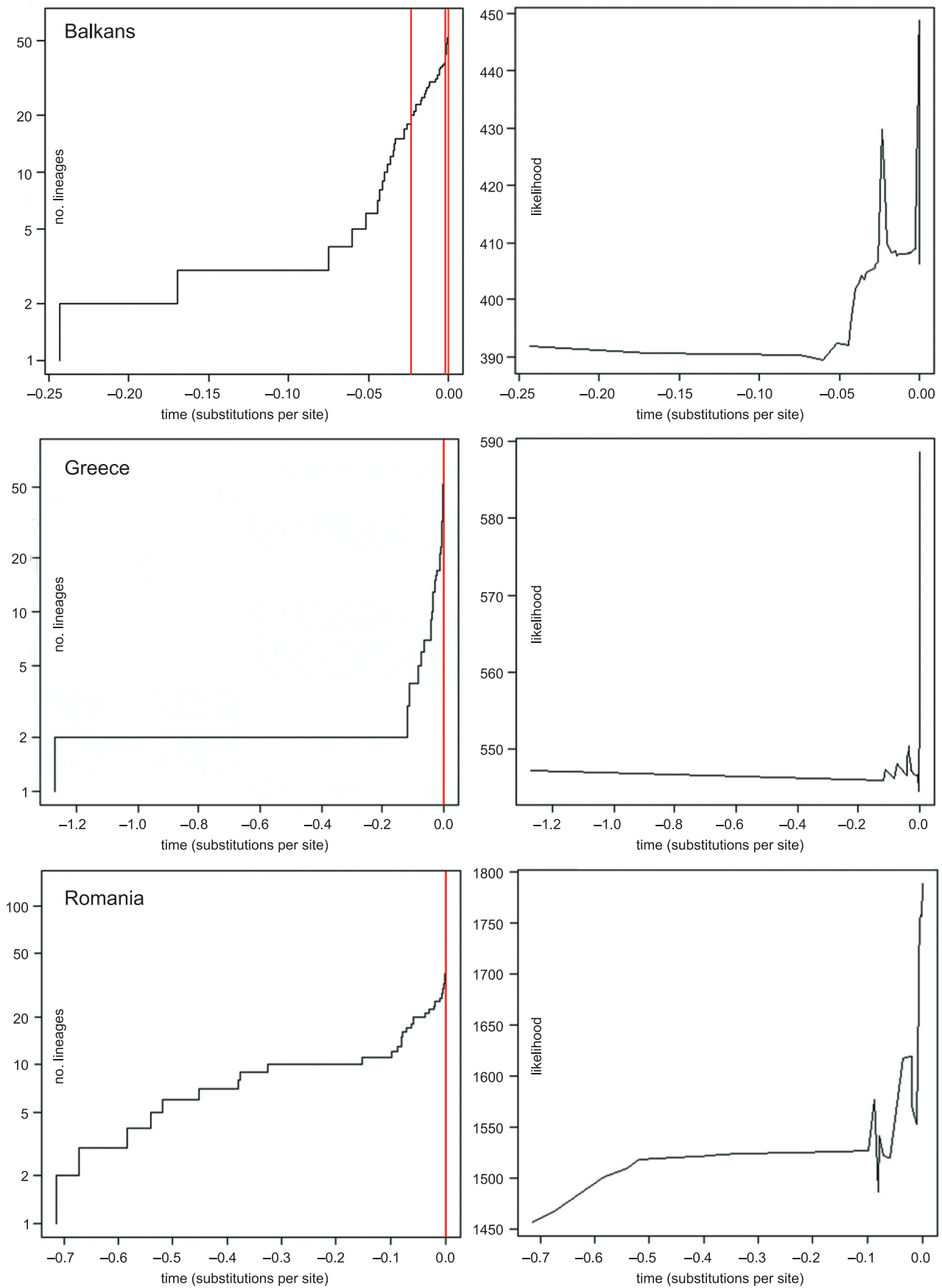


Fig. 4. Results of GMYC analysis: number of lineages (left; multiple threshold) and likelihood (right; single threshold) as function of time (in number of substitutions per site)



Table 2. Results of GMYC analysis

	Balkans	Greece	Romania
number of ultrametric trees	71	490	1,002
likelihood of null model	391.8979	547.1936	1457.108
ML of GMYC model, single threshold	448.6695	588.6577	1788.625
ML of GMYC model, multiple threshold	438.3652	597.0882	1799.147
likelihood ratio, single threshold	113.5432	82.92817	663.0329
LR test (p), single threshold	0.0000	0.0000	0.0000
likelihood ratio, multiple threshold	92.93456	99.78914	684.078
LR test (p), multiple threshold	0.0000	0.0000	0.0000
ML clusters' number, single threshold	6	8	23
confidence interval, single threshold	6–6	8–8	23–23
ML clusters' number, multiple threshold	8	9	35
confidence interval, multiple threshold	7–8	9–9	30–35
ML entities' number, single threshold	38	68	53
confidence interval, single threshold	38–38	68–68	53–53
ML entities' number, multiple threshold	27	68	55
confidence interval, multiple threshold	24–27	66–68	47–55
single threshold time (substitution/site)	–0.00248	–0.00248	–0.00248
multiple threshold time (substitution/site)	–0.00187	–0.00248	–0.00248
	–0.00248	–0.00095	
	–0.02303		

DISCUSSION

All the trees, following the assumptions of the technique, were fully dichotomous and ultrametric (PONS et al. 2006). However, as the clock hypothesis was rejected for the Romanian and whole Balkan trees, they were ultrametric formally, but this ultrametricity did not reflect real evolutionary processes. This obviously weakens the biological meaning of the results.

It is obvious that different substitution models may affect results of the GMYC technique (e.g. LIM et al. 2012). Table 1 shows that the models differ markedly between the trees. Unexpectedly, the threshold values inferred with the single threshold model were the same for all three phylogenies considered.

In general, a limitation of the method of PONS et al. (2006) is that it fits a single transition time between the pure-birth and coalescent phases. This may make the outcome sensitive to over-sampling of individual genotypes. In the present study the Romanian data set consisted of several haplotypes represented more than once in the data set. In fact, this comprised all sequences obtained in FALNIOWSKI et al. (2009b), and the tree might represent oversampling. However, the inferred threshold value was the same as in the case of the Greek dataset including all the haplotypes, each of them represented once. On the other hand, the threshold value is different for the Balkan tree which included mostly species represented by one sequence each, together with some species represented by some more sequences.

Sampling only a small number of populations may lead to artificial clustering within species when using the GMYC procedure (LOHSE 2009, PAPADOPOULOU et al. 2009c), but in our data as few as 12 Romanian populations sampled (FALNIOWSKI et al. 2009b) resulted in 23 (35) ML clusters; 29 Greek populations (FALNIOWSKI & SZAROWSKA 2011) in 8 (9) ML clusters; 10 populations from the Balkans (FALNIOWSKI et al. 2012) represented by more than one sequence, resulted in 6 (8) ML clusters. Thus, we cannot confirm LOHSE's opinion (LOHSE 2009). It is also clear that the ML threshold number need not be informative: it was highest in the Romanian tree, but the number of the ML entities was higher in the Greek tree. Surely, this reflects numerous sequences that appeared more than once in the Romanian dataset. However, where several sequences differ in, say, one substitution, the number of ML clusters will be higher as well.

ZALDIVAR et al. (2010) observed that the multiple threshold GMYC model, even where it resulted in a lower number of barcode species, frequently considered the existence of two or more species within various clusters of sequences that evidently belonged to a single lineage. In our study the single and multiple threshold models resulted in approximate numbers of ML entities in the Greek *Bythinella*. In the case of the Romanian *Bythinella* the number inferred with the multiple threshold model approximated the number inferred with the single threshold model, but

the confidence interval of the former was wider (Table 2). On the other hand, in the case of the Balkan *Bythinella* the number of ML entities inferred with the multiple threshold model was much lower than the one found with the single threshold model (27 vs. 38), and it was unexpectedly low.

GMYC models can accommodate singletons, but are thought to yield skewed results when too many are included (LIM et al. 2012). Fig. 1, the tree representing the Balkans, shows numerous singletons (22 in a tree consisting of 63 sequences). Indeed, the multiple threshold model resulted in some threshold values which were biologically unrealistic (Fig. 4). On the other hand, the threshold value inferred with the single threshold model was the same as for the other trees.

Despite all the ambiguities concerning the species-level taxonomy in *Bythinella* (e.g. GIUSTI & PEZZOLI 1977, 1980, FALNIOWSKI 1987, 1992, BICHAIN et al. 2007a, b, HAASE et al. 2007), there are data on morphology, biology, distribution etc. of the taxa of *Bythinella* considered in the present study (FALNIOWSKI et al. 2009a, b, c, FALNIOWSKI & SZAROWSKA 2011, FALNIOWSKI et al. 2012), and some species-level classification of those taxa has been proposed. Thus the results of the GMYC analysis could be compared with those data.

Obviously, a straightforward comparison of the trees is not possible. In the Balkan tree the Romanian *Bythinella* is represented by six singletons only, but the number of the ML entities (presumably species) in the Romanian tree is 38 (53 minus 15 singletons representing outgroup). Thus, in Romania, either the GMYC technique gave unrealistic results, as only six species were distinguished (FALNIOWSKI et al. 2009 b, c), or there really are many more species. Similarly, in the Greek tree 61 (68 minus 7 singletons representing outgroup) ML entities are represented by 12 sequences only (representing 10 presumed species). Thus, again, two interpretations are theoretically possible, but in the Romanian and Greek *Bythinella* the GMYC technique seems to overestimate the number of species.

In the Balkan tree the single threshold model resulted in 38 ML entities (27 in the multiple threshold

one). Two singletons are outgroup, there are also three *Bythinella* species from outside of the Balkans [*B. austriaca* (Frauenfeld, 1857), *B. compressa* (Frauenfeld, 1857), *B. pannonica* (Frauenfeld, 1865)], and outside of the Balkans are *B. austriaca ehrmanni* Pax, 1938, and *B. micherdzinskii* Falniowski, 1980. From Slovenia are *B. robiciana* (Clessin, 1890) and *B. schmidtii* (Küster, 1852)). Six species are from Romania (*B. radomani* Falniowski, Szarowska et Sirbu, 2009, *B. dacica* Grossu, 1946, *B. viseuiana* Falniowski, Szarowska et Sirbu, 2009, *B. grossui* Falniowski, Szarowska et Sirbu, 2009, *B. molcsanyi* H. Wagner, 1941, and *B. calimanica* Falniowski, Szarowska et Sirbu, 2009). From Greece there are ten species [*B. charpentierii* (Roth, 1855), and nine species not yet described: FALNIOWSKI & SZAROWSKA 2011]. Another six species from the Balkans are: *B. hansboetersi* Glöer et Pešić, 2006 (including the nominal taxa: *B. slaveyae* Glöer et Georgiev, 2011, and *B. rhodopensis* Glöer et Georgiev, 2009), *B. dispersa* Radoman, 1976, *B. taraensis* Glöer et Pešić, 2010, *B. pesterica* Glöer, 2008, *B. luteola* Radoman, 1976, and *B. nonveilleri* Glöer, 2008. Thus the total number of species distinguished prior to this study is 31 (29 *Bythinella*), assuming that *B. micherdzinskii* and *B. austriaca ehrmanni* (subspecies level so far) are distinct species. The three sequences of *B. pesterica* most probably represent two species. *B. dispersa*, as well as *B. charpentierii*, geographically rather widely distributed, may also represent two species. The two sequences representing G8 from Greece represent rather two species (again, one from the southern, and the other from the northern part of the Peloponnese peninsula); it seems that yet another species occurs in the Kythira island. Thus, the total number of species distinguished prior to the GMYC analysis equals 36, which is very close to the number 38 inferred with the single threshold model of GMYC for the Balkan data set. Anyway, this total number clusters within the range given by the two GMYC models.

ACKNOWLEDGEMENTS

We wish to thank Dr. TIM BARRACLOUGH for providing the R scripts used for performing the GMYC analysis.

REFERENCES

- ADOLFSSON S., MICHALAKIS Y., PACZESNIAK D., BODE S. N. S., BUTLIN R. K. 2010. Evaluation of elevated ploidy and asexual reproduction as alternative explanations for geographic parthenogenesis in *Eucypris virens* ostracods. *Evolution* 64: 986–997. doi: 10.1111/j.1558-5646.2009.00872.x
- AHRENS D., MONAGHAN M. T., VOGLER A. P. 2007. DNA-based taxonomy for associating adults and larvae in multi-species assemblages of chafers (Coleoptera: Scarabaeidae). *Mol. Phyl. Evol.* 44: 436–449. doi: 10.1016/j.ympev.2007.02.024
- AKAIKE H. 1974. A new look at the statistical model identification. *IEEE Trans. Automat. Control* 19: 716–723. doi: 10.1109/TAC.1974.1100705
- BARRACLOUGH T. G., HUGHES M., ASHFORD-HODGES N., FUJISAWA T. 2009. Inferring evolutionarily significant units of bacterial diversity from broad environmental



- surveys of single-locus data. *Biol. Lett.* 5: 425–428. doi: 10.1098/rsbl.2009.0091
- BENKE M., BRÄNDLE M., ALBRECHT C., WILKE T. 2009. Pleistocene phylogeography and phylogenetic concordance in cold-adapted spring snails (*Bythinella* spp.). *Mol. Ecol.* 18: 890–903. doi: 10.1111/j.1365-294X.2008.04073.x
- BICHAIN J.-M., GAUBERT P., SAMADI S., BOISSELIER-DUBAYLE M.-C. 2007a. A gleam in the dark: Phylogenetic species delimitation in the confusing spring-snail genus *Bythinella* Moquin-Tandon, 1856 (Gastropoda: Risssooidea: Amnicolidae). *Mol. Phyl. Evol.* 45: 927–941. doi: 10.1016/j.ympev.2007.07.018
- BICHAIN J.-M., BOISSELIER-DUBAYLE M.-C., BOUCHET P., SAMADI S. 2007b. Species delimitation in the genus *Bythinella* (Mollusca: Caenogastropoda: Risssooidea): a first attempt combining molecular and morphometrical data. *Malacologia* 49: 293–311. doi: 10.4002/0076-2997-49.2.293
- BODE S. N. S., ADOLFSSON S., LAMATSCH D. K., MARTINS M. J. F., SCHMIT O., VANDEKERKHOVE J., MEZQUITA F., NAMIOTKO T., ROSSETTI G., SCHÖN I., BUTLIN R. K., MARTENS K. 2010. Exceptional cryptic diversity and multiple origins of parthenogenesis in a freshwater ostracod. *Mol. Phyl. Evol.* 54: 542–552. doi: 10.1016/j.ympev.2009.08.022
- BOETERS H. D. 1973. Die Gattung *Bythinella* and Gattung *Marstoniopsis* in Westeuropa, I. Westeuropäische Hydrobiidae, 4 (Prosobranchia). *Proc. Fourth Europ. Malac. Congr., Malacologia* 14: 271–285.
- BRANDAO S. N., SAUER J., SCHON I. 2010. Circumantarctic distribution in Southern Ocean benthos? A genetic test using the genus *Macroscapha* (Crustacea, Ostracoda) as a model. *Mol. Phyl. Evol.* 55: 1055–1069. doi: 10.1016/j.ympev.2010.01.014
- CICCONARDI F., NARDI F., EMERSON B. C., FRATI F., FANCIULLI P. P. 2010. Deep phylogeographic divisions and long-term persistence of forest invertebrates (Hexapoda: Collembola) in the North-Western Mediterranean basin. *Mol. Ecol.* 19: 386–400. doi: 10.1111/j.1365-294X.2009.04457.x
- CRAWFORD A. J., LIPS K. R., BIRMINGHAM E. 2010. Epidemic disease decimates amphibian abundance, species diversity, and evolutionary history in the highlands of central Panama. *Proc. Natl. Acad. Sci. USA* 107: 13777–13782. doi: 10.1073/pnas.0914115107
- FALNIOWSKI A. 1987. Hydrobioidea of Poland (Prosobranchia: Gastropoda). *Folia Malacol.* 1: 1–122.
- FALNIOWSKI A. 1992. Genus *Bythinella* Moquin-Tandon, 1855, in Poland (Gastropoda, Prosobranchia, Hydrobiidae). Paper presented at: IMC 1986. Proceedings of the 9th International Malacological Congress; Edinburgh, UK.
- FALNIOWSKI A., HORSÁK M., SZAROWSKA M. 2009a. *Bythinella hansboetersi* Glöer et Pešić, 2006 (Gastropoda: Risssooidea) in Bulgaria: its morphology, molecular distinctness, and phylogeography. *Folia Malacol.* 17: 11–22.
- FALNIOWSKI A., SZAROWSKA M. 2011. Radiation and phylogeography in a spring snail *Bythinella* (Mollusca: Gastropoda: Risssooidea) in continental Greece. *Ann. Zool. Fenn.* 48: 67–90.
- FALNIOWSKI A., SZAROWSKA M., GLÖER P., PEŠIĆ V., GEORGIEV D., HORSÁK M., SIRBU I. 2012. Radiation in *Bythinella* (Mollusca: Gastropoda: Risssooidea) in the Balkans. *Folia Malacol.* 20: 1–10. doi: 10.2478/v10125-012-0006-2
- FALNIOWSKI A., SZAROWSKA M., SIRBU I. 2009b. *Bythinella* Moquin-Tandon, 1856 (Gastropoda: Risssooidea: Bythinellidae) in Romania: species richness in a glacial refugium. *J. Nat. Hist.* 43: 2955–2973. doi: 10.1080/00222930903359636
- FALNIOWSKI A., SZAROWSKA M., SIRBU I. 2009c. *Bythinella* Moquin-Tandon, 1856 (Gastropoda: Risssooidea: Bythinellidae) in Romania: its morphology with description of four new species. *Folia Malacol.* 17: 21–36. doi: 10.2478/v10125-009-0003-2
- FONTANETO D., HERNIOU E., BOSCHETTI C., CAPRIOLI M., MELONE G., RICCI C., BARRACLOUGH T. G. 2007. Independently evolving species in asexual bdelloid rotifers. *PLoS Biology* 5: e87. doi: 10.1371/journal.pbio.0050087
- FONTANETO D., KAYA M., HERNIOU E. A., BARRACLOUGH T. G. 2009. Extreme levels of hidden diversity in microscopic animals (Rotifera) revealed by DNA taxonomy. *Mol. Phyl. Evol.* 53: 182–189. doi: 10.1016/j.ympev.2009.04.011
- GATTOLLIAT J. L., MONAGHAN M. T. 2010. DNA-based association of adults and larvae in Baetidae (Ephemeroptera) with the description of a new genus *Adnoptilum* in Madagascar. *J. N. Am. Benthol. Soc.* 29: 1042–1057. doi: 10.1899/09-119.1
- GIUSTI F., PEZZOLI E. 1977. Primo contributo alla revisione del genere *Bythinella* in Italia. *Natura Bresciana, Annuario del Museo Civico di Storia Naturale di Brescia* 14: 3–80.
- GIUSTI F., PEZZOLI E. 1980. *Gasteropodi*, 2 (Gastropoda: Prosobranchia: Hydrobioidea, Pyrguloidea). Consiglio Nazionale delle Ricerche AQ/1/47. Guide per il riconoscimento delle specie animali delle acque interne Italiane, 8, Verona.
- HAASE M., WILKE T., MILDNER P. 2007. Identifying species of *Bythinella* (Caenogastropoda: Risssooidea): A plea for an integrative approach. *Zootaxa* 1563: 1–16.
- HENDRICH L., PONS J., RIBERA I., BALKE M. 2010. Mitochondrial *Cox1* sequence data reliably uncover patterns of insect diversity but suffer from high lineage-idiosyncratic error rates. *PLoS ONE* 5(12): e14448. doi: 10.1371/journal.pone.0014448
- JOUSSELIN E., DESDEVISES Y., D'ACIER A. C. 2009. Fine-scale cospeciation between *Brachycaudus* and *Buchnera aphidicola*: bacterial genome helps define species and evolutionary relationships in aphids. *Proc. R. Soc. Lond. B* 276: 187–196. doi: 10.1098/rspb.2008.0679
- JUNGBLUTH J. H., BOETERS H. D. 1977. Zur Artabgrenzung bei *Bythinella dunkeri* und *bavarica* (Prosobranchia). *Malacologia* 16: 143–147.
- LELIAERT F., VERBRUGGEN H., WYSOR B., DE CLERCK O. 2009. DNA taxonomy in morphologically plastic taxa: algorithmic species delimitation in the *Boodlea* complex (Chlorophyta: Cladophorales). *Mol. Phyl. Evol.* 53: 122–133. doi: 10.1016/j.ympev.2009.06.004



- LIM G. S., BALKE M., MEIER R. 2012. Determining species boundaries in a world full of rarity: singletons, species delimitation methods. *Syst. Biol.* 60: 1–5.
- LOHSE K. 2009. Can mtDNA barcodes be used to delimit species? A response to Pons et al. (2006). *Syst. Biol.* 58: 439–442. doi: 10.1093/sysbio/syp039
- LORION J., BUGE B., CRUAUD C., SAMADI S. 2010. New insights into diversity and evolution of deep-sea Mytilidae (Mollusca: Bivalvia). *Mol. Phyl. Evol.* 57: 71–83. doi: 10.1016/j.ympev.2010.05.027
- MONAGHAN M. T., WILD R., ELLIOT M., FUJISAWA T., BALKE M., INWARD D. J., LEES D.C., RANAIVOSOLO R., EGGLETON P., BARRACLOUGH T. G., VOGLER A. P. 2009. Accelerated species inventory on Madagascar using coalescent-based models of species delineation. *Syst. Biol.* 58: 298–311. doi: 10.1093/sysbio/syp027
- NEI M., KUMAR S. 2000. Molecular evolution and phylogenetics. Oxford University Press, Oxford.
- NEKOLA J. C., COLES B. F., BERGTHORSSON U. 2009. Evolutionary pattern and process within the *Vertigo gouldii* (Mollusca: Pulmonata, Pupillidae) group of minute North American land snails. *Mol. Phyl. Evol.* 53: 1010–1024. doi: 10.1016/j.ympev.2009.09.012
- PAGES M., CHAVAL Y., HERBRETEAU V., WAENGSOTHORN S., COSSON J. F. 2010. Revisiting the taxonomy of the Rattini tribe: a phylogeny-based delimitation of species boundaries. *BMC Evol. Biol.* 10: 184. doi: 10.1186/1471-2148-10-184
- PAPADOPOULOU A., ANASTASIOU I., KESKIN B., VOGLER A. P. 2009a. Comparative phylogeography of tenebrionid beetles in the Aegean archipelago: the effect of dispersal ability and habitat preference. *Mol. Ecol.* 18: 2503–2517. doi: 10.1111/j.1365-294X.2009.04207.x
- PAPADOPOULOU A., JONES A. G., HAMMOND P. M., VOGLER A. P. 2009b. DNA taxonomy and phylogeography of beetles of the Falkland Islands (Islas Malvinas). *Mol. Phyl. Evol.* 53: 935–947. doi: 10.1016/j.ympev.2009.08.027
- PAPADOPOULOU A., MONAGHAN M. T., BARRACLOUGH T. G., VOGLER A. P. 2009c. Sampling error does not invalidate the Yule-coalescent model for species delimitation. A response to Lohse (2009). *Syst. Biol.* 58: 442–444. doi: 10.1093/sysbio/syp038
- PARADIS E. 2006. Analyses of phylogenetics and evolution with R. Springer, New York.
- PARADIS E., CLAUDE J., STRIMMER K. 2004. APE: analyses of phylogenetics and evolution in R language. *Bioinformatics* 20: 289–290. doi: 10.1093/bioinformatics/btg412
- PONS J., BARRACLOUGH T. G., GOMEZ-ZURITA J., CARDOSO A., DURAN D. P., HAZELL S., KAMOUN S., SUMLIN W. D., VOGLER A. P. 2006. Sequence-based species delimitation for the DNA taxonomy of undescribed insects. *Syst. Biol.* 55: 595–609. doi: 10.1080/10635150600852011
- POSADA D. 2003. Selecting models of evolution. In: SALEMI M., VANDAMME A.-M. (eds). The phylogenetic handbook. A practical approach to DNA and protein phylogeny. Cambridge University Press, Cambridge, pp. 256–282.
- POSADA D., BUCKLEY T. R. 2004. Model selection and model averaging in phylogenetics: advantages of Akaike Information Criterion and Bayesian approaches over Likelihood Ratio Tests. *Syst. Biol.* 53: 793–808. doi: 10.1080/10635150490522304
- POSADA D., CRANDALL K. A. 1998. Modeltest: testing the model of DNA substitution. *Bioinformatics* 14: 817–818. doi: 10.1093/bioinformatics/14.9.817
- POWELL J. R., MONAGHAN M. T., OPIK M., RILLIG M. C. 2011. Evolutionary criteria outperform operational approaches in producing ecologically relevant fungal species inventories. *Mol. Ecol.* 20: 655–666. doi: 10.1111/j.1365-294X.2010.04964.x
- R DEVELOPMENT CORE TEAM 2008. R: a language and environment for statistical computing. R Foundation for Statistical Computing, Vienna, Austria.
- RADOMAN P. 1976. Speciation within the family Bythynellidae on the Balkans and Asia Minor. *Zeitschr. Zool. Syst. Evolutionsforsch.* 14: 130–152. doi: 10.1111/j.1439-0469.1976.tb00522.x
- RADOMAN P. 1983. Hydrobioidea a superfamily of Prosobranchia (Gastropoda). I. Systematics. Serbian Academy of Sciences and Arts, Monographs 547, Department of Sciences 57: 1–256.
- SOBER E. 2002. Instrumentalism, parsimony, and the Akaike framework. *Phil. Sci.* 69: 112–123. doi: 10.1086/341839
- SWOFFORD D. L. 2002. PAUP* - Phylogenetic Analysis Using Parsimony (* and other methods). Ver. 4. [Computer software and manual], Sinauer Associates Inc. Publishers, Sunderland.
- SWOFFORD D. L., OLSEN G. J., WADDELL P. J., HILLIS D. M. 1996. Phylogenetic inference. In: HILLIS D. M., MORITZ C., MABLE B. K. (eds). Molecular systematics. 2 ed, Sinauer Associates Inc., Sunderland, pp. 407–514.
- VUATAZ L., SARTORI M., WAGNER A., MONAGHAN M. T. 2011. Toward a DNA taxonomy of alpine *Rhithrogena* (Ephemeroptera: Heptageniidae) using a mixed Yule-coalescent analysis of mitochondrial and nuclear DNA. *PLoS ONE* 6(5): e19728. doi: 10.1371/journal.pone.0014448
- WILKE T. 2003. *Salenthydrobia* gen. nov. (Rissooidea: Hydrobiidae): a potential relict of the Messinian salinity crisis. *Zool. J. Linn. Soc.* 137: 319–336. doi: 10.1046/j.1096-3642.2003.00049.x
- YASSIN A., AMEDEGNATO C., CRUAUD C., VEUILLE M. 2009. Molecular taxonomy and species delimitation in Andean *Schistocerca* (Orthoptera: Acrididae). *Mol. Phyl. Evol.* 53: 404–411. doi: 10.1016/j.ympev.2009.06.012
- YULE G. U. 1924. A mathematical theory of evolution based on the conclusions of Dr. J. C. Willis, FRS. *Phil. Trans. R. Soc. B* 213: 21–87. doi: 10.1098/rstb.1925.0002
- ZALDIVAR-RIVERO A., MARTINEZ J. J., CECCARELLI F. S., DE JESÚ'S-BONILLA V. S., RODRÍGUEZ-PÉREZ A. C., RESÉNDIZ-FLORES A., SMITH A. 2010. DNA barcoding a highly diverse group of parasitoid wasps (Braconidae: Doryctinae) from a Mexican nature reserve. *Mitochondrial DNA* 21: 18–23.

Received: January 2nd, 2012

Revised: March 26th, 2012

Accepted: April 24th, 2012

