

Multi-modal switching in responsive DNA block co-polymer conjugates†

Cite this: *Phys. Chem. Chem. Phys.*, 2013, **15**, 16263

Gökçen Yaşayan,^{ab} Johannes P. Magnusson,^a Giovanna Sicilia,^a Sebastian G. Spain,^a Stephanie Allen,^a Martyn C. Davies^a and Cameron Alexander^{*a}

New classes of information-rich DNA block co-polymer conjugates were synthesised, encoded with thermoresponsive and biocompatible poly(tri(ethylene glycol)ethyl ether methacrylate) (pTriEGMA) chains and oligomeric nucleic acids connected by either bioreducible or non-reducible links. The pTriEGMA chains were grown from initiator-functionalised hybridised DNA, designed to assemble with toehold overhangs. Functional information in the conjugates was explored *via* dynamic light scattering (DLS) and atomic force microscopy (AFM), in order to evaluate (i) reversible self-assembly into supramolecular structures across the pTriEGMA phase transition temperature; (ii) conformational change *via* addition of competing DNA sequences across the toeholds, and (iii) reductive cleavage of polymer–DNA links. The results showed that discrete nanoscale conjugates could reversibly associate through pTriEGMA phase behaviour and that size and association behaviour in one class of conjugate could be switched by addition of a competing DNA sequence and by reduction to break the polymer–DNA links. Preliminary experiments with the DNA-conjugates as delivery systems for doxorubicin to a cancer cell line indicated good tolerability of the conjugates alone and cytotoxic efficacy when loaded with the drug.

Received 28th May 2013,
Accepted 22nd August 2013

DOI: 10.1039/c3cp52243a

www.rsc.org/pccp

Introduction

Nucleic acid nanotechnology offers a range of possibilities for new materials with sophisticated functions. Information encoded into DNA and RNA-based materials can encompass not only biological signals, but also structural and architectural function. Pioneering work by Seeman and others has shown that synthetic structures of great complexity can be assembled by re-programming DNA assembly modes.^{1–4} Complex dynamic behaviour and controlled chemistry with DNA assemblies has been demonstrated,^{5–7} while catalytically switched DNA assemblies *via* 'toehold' and hairpin sequences have enabled elegant logic and information operations to be performed.^{8–10}

The stability of certain DNA sequences in biological environments facilitates their use in practical applications, making such systems appealing as biomedical materials. Systems that could self-assemble to precisely-definable architectures in order to localise at disease sites in the body¹¹ and then alter conformation to signal a problem or release a drug at that target site, are of particular interest. The richness of information in nucleic acid

sequences suggests that DNA modules could easily be exploited to encode a structural response in a material to a disease – or externally-mediated signal. Within the biomaterials field there is an increasing focus on switching phenomena, especially *via* intrinsically-responsive systems.^{12–17} Leading papers have shown that a new class of amphiphilic co-polymers, based on PEG-methacrylate (PEGMA) are non-toxic, non-immunogenic and can change their conformations/molecular architectures in response to external stimuli.^{18,19} Related polyPEGMA materials can reversibly assemble into micelles and disassemble to release model drugs in response to stimuli.²⁰ Micellar assembly/disassembly and the stimuli causing these changes can be varied and controlled to a high degree.^{21–25} Unfortunately, the majority of techniques to cause a response in biomaterials, either for signal transduction or for disassembly and drug release are rather generic in nature, *i.e.* they require heat, light, change in redox potential *etc.*, none of which are truly customisable. Recent papers from the Herrmann group have shown, however, that polymer micelles and vesicles can be programmed to assemble into precisely controllable architectures *via* a combination of DNA base-pairing blocks and either hydrophilic PEG or hydrophobic PPG blocks.^{26–29} The combination therefore of DNA sequences with responsive polymer blocks accordingly offers intriguing possibilities for multi-switchable materials, which might act as cell- or even patient-specific bioprobes, sensors, and controlled release systems. Of particular note would be

^a School of Pharmacy, University of Nottingham, Nottingham, NG7 2RD, UK.

E-mail: cameron.alexander@nottingham.ac.uk; Fax: +44 (0)115 951 5102;

Tel: +44 (0)115 846 7678

^b Marmara Universitesi, Istanbul, Turkey

† Electronic supplementary information (ESI) available. See DOI: 10.1039/c3cp52243a



materials that could be activated by both exogenous stimuli, such as external ultrasound,³⁰ as well as endogenous signals, such as long circulating microRNAs.^{31,32}

However, before any practical applications can be considered for responsive DNA conjugates, their behaviour at the molecular level needs to be defined. Here we report the synthesis of new multi-responsive DNA-polymer conjugates and the characterisation of the conjugates by biophysical techniques, including AFM to give information on conjugate properties at the nanoscale. These materials combine “smart” tri(ethylene glycol)ethyl ether methacrylate (pTriEGMA) chains and oligomeric nucleic acids with ‘toehold’ sequences to facilitate strand interchange. In addition to the thermoresponsive switching of the polymer chains and the sequence binding/interchange function of the DNA blocks, the conjugates were prepared with either reducible disulfide (conjugate 1) or non-reducible links (conjugate 2) between polymer and DNA, thus providing a further means to change functional behaviour in one of the materials. The conjugates and their response modes are shown schematically in Fig. 1.

We further show solution biophysical data, including dynamic light scattering (DLS) and atomic force microscopy (AFM) experiments, which were used to characterise the changes in conformation of the conjugates as they were ‘switched’ by (a) temperature changes, (b) addition of DNA strands designed to disrupt self-assembly and (c) reducing agents to cleave the polymer-DNA linkages.

Finally, we report the results of preliminary investigations into the use of these materials as carriers for doxorubicin, a widely used cytotoxic, as a first stage in evaluating the efficacy of polymer-DNA conjugates as multi-switchable drug delivery systems.

Materials and methods

All solvents and reagents were of analytical or HPLC grade and purchased from Sigma or Fisher Scientific unless otherwise specified. Deuterated solvents were purchased from Sigma Aldrich.

Tri(ethylene glycol)ethyl ether methacrylate (TriEGMA, M_n 246) was purchased from Sigma-Aldrich and purified by passing it through a column filled with basic alumina before use. Copper(II) bromide (Cu(II)Br_2 , 99%), copper(I) bromide (Cu(I)Br , >98%), triethylamine (Et_3N , 99%), dithiodiethanol (technical grade), α -bromoisobutyryl bromide (98%), fluorescein *O*-methacrylate (97%), doxorubicin hydrochloride (98.0–102.0%), thiazolyl blue tetrazolium bromide (MTT) and *N,N'*-disuccinimidyl carbonate (DSC) (>95%), Tris buffer, TRIS borate EDTA (TBE) buffer (10 \times), *N,N',N'',N'''*-ethylenediamine tetraacetic acid (EDTA) were purchased from Sigma-Aldrich. Tris-(2-carboxyethyl)phosphine hydrochloride (TCEP) was purchased Invitrogen. Methacryloxyethyl thiocarbonyl rhodamine B (Polyfluor 570) was purchased from Polysciences. All reagents were used as received unless otherwise stated. Tris(2-pyridyl) methylamine (TPMA) and 3 were prepared as previously reported.³³

Oligonucleotide sequences oligo 1 (5' TAA CAG GAT TAG CAG AGC GAG G, 5' C6-NH₂), oligo 2 (5' CCT CGC TCT GCT AAT CC, 5' C6-NH₂) and oligo 3 (CCT CGC TCT GCT AAT CCT GTT A) were purchased HPLC purified from Biomers GmbH (Ulm, Germany) and used as received. Dialysis membrane (6–8 K, regenerated cellulose) was used as received from Spectrapor.

For AFM studies, mica discs and specimen discs were purchased from Agar Scientific (Stansted, UK), ScanAsyst-Fluid + AFM probes (resonant mechanical frequency: 120–180 kHz, spring constant: 0.7 N m⁻¹) were purchased from Bruker

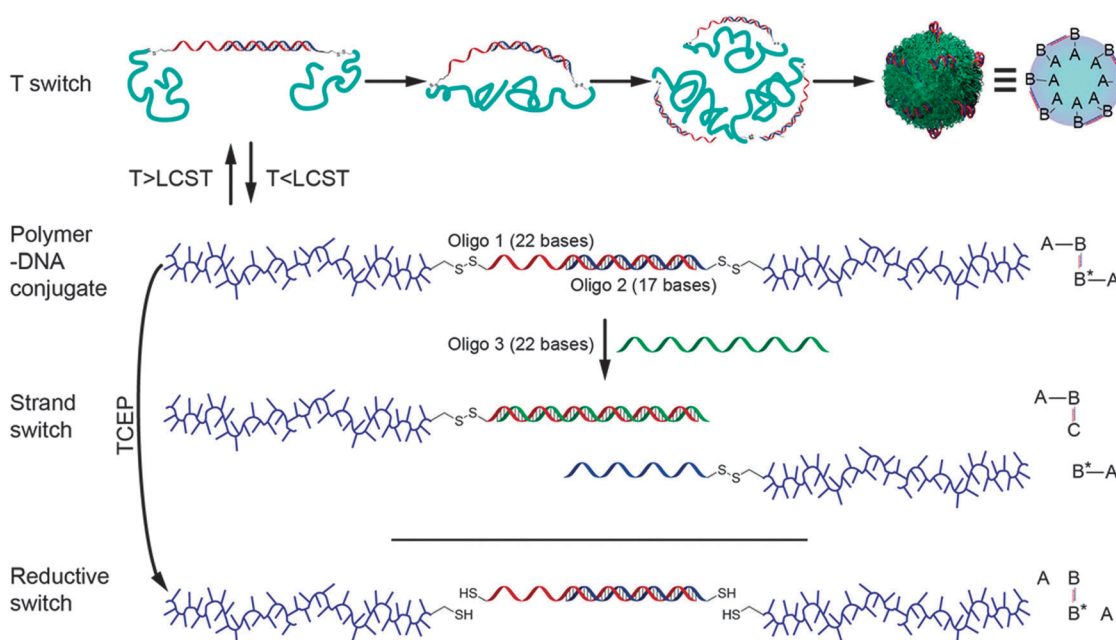


Fig. 1 Multi-mode switchable polymer-DNA conjugates. The three response modes are shown schematically, with temperature-induced polymer phase transition of ‘A’ blocks in the AB-B*A conjugates to supramolecular assemblies (top), DNA strand switching to separate ‘A-B-C’ and ‘B*-A’ blocks (lower middle) and reductive cleavage of polymer-DNA links to generate ‘A’ and ‘B-B*’ blocks (bottom).



(Cambridge, UK). 0.22 μm PES and 0.45 μm MCF syringe filters were purchased from Interlab (Wellington, New Zealand). Dulbecco's Phosphate Buffered Saline buffer (DPBS, 0.0095 M (PO_4) without Ca and Mg) was purchased from Lonza (Cambridge, UK). For zeta potential measurements, disposable capillary cells were purchased from Malvern Instruments (Worcestershire, UK).

Initiator synthesis

Synthesis of 2-((2-hydroxyethyl)disulfanyl)ethyl 2-bromo-2-methylpropanoate (1). Dithiodiethanol (25.2 g, 0.164 mol) and triethylamine (9.14 g, 0.09 mol) were dissolved in anhydrous DCM (100 mL). The solution was cooled to 0 $^\circ\text{C}$ and α -bromo-isobutyryl bromide (18.8 g, 0.082 mol) was added dropwise. The solution was subsequently allowed to reach room temperature and left to react for 4 hours. The mixture was filtered and the solvent evaporated *in vacuo*. The remaining oil was purified by flash column chromatography (silica gel 60 \AA , 35–70 μm , eluent 8/2 diethyl ether–hexane). The product was recovered as a yellowish oil (9.0 g, 37% yield). ^1H NMR (CDCl_3 , 400 MHz): δ 4.45–4.42 (– COOCH_2 –, t, J = 6.7 Hz, 2H), 3.89–3.86 (HO– CH_2 –, t, J = 5.8 Hz, 2H), 2.98–2.94 (–S– CH_2 –, t, J = 6.7 Hz, 2H), 2.89–2.86 (–S– CH_2 –, t, J = 5.8 Hz, 2H), 2.16 (–OH, t, 1H), 1.92 (CH_3 –, s, 6H). ^{13}C NMR (CDCl_3): δ 171.56, 63.66, 60.23, 55.54, 41.57, 36.51, 30.71.

Synthesis of 2-(((2,5-dioxopyrrolidin-1-yl)oxy)carbonyl)oxy)ethyl)disulfanyl)ethyl 2-bromo-2-methylpropanoate (2, DSC-SS-Br). **1** (2 g, 6.6 mmol) and *N,N'*-disuccinimidyl carbonate (DSC) (2 g, 7.8 mmol) were dissolved in anhydrous MeCN (10 mL). The solution was cooled down to 0 $^\circ\text{C}$ and triethylamine (0.79 g, 7.8 mmol) was added. The reaction was allowed to warm to room temperature and left to react for 4 hours. The solvent was removed *in vacuo* and the residue dissolved in DCM. The organic phase was washed 3 times with water, dried with magnesium sulfate and removed *in vacuo*. The remaining oil was purified by flash column chromatography (silica gel 60 \AA , 35–70 μm , eluent 95/5 diethyl ether–methanol). Initiator 1 was recovered as yellowish oil (600 mg, 21% yield). HRMS: calculated for (M + Na) 467.9586 found (M + Na) 467.9593. ^1H NMR (CDCl_3 , 400 MHz): δ 4.62–4.58 (– COOCH_2 –, t, J = 6.8 Hz, 2H), 4.49–4.46 (– COOCH_2 –, t, J = 6.5 Hz, 2H), 3.07–3.00 (–S– CH_2 –, m, 4H), 2.87 (– CH_2 –, s, 4H), 1.97 (CH_3 –, s, 6H). ^{13}C NMR (CDCl_3): δ 171.46, 168.41, 151.42, 68.72, 63.46, 55.51, 36.86, 36.24, 30.72, 25.46.

Oligonucleotide annealing (hybrid 1). Oligo 1 (5' TAA CAG GAT TAG CAG AGC GAG G, 5' C6-NH₂) (3518 μg , 0.5 μmol) and oligo 2 (5' CCT CGC TCT GCT AAT CC, 5' C6-NH₂) (2617 μg , 0.5 μmol) were dissolved in 3.6 mL of annealing buffer (10 mM Tris, 50 mM NaCl, 1 mM EDTA, pH 7.5). The solution was heated on a water bath at 90 $^\circ\text{C}$ for 5 minutes and subsequently allowed to cool down slowly to room temperature. The solution was desalted by dialysis against UHQ water (resistivity > 18 M Ω) and lyophilised to yield hybrid 1.

Oligonucleotide conjugation (initiator 1). Hybrid 1 (6135 μg , 0.5 μmol) was resuspended in 10 mL of DPBS and the pH of the solution adjusted to 7.5. **2** (36 mg, 81 μmol) was dissolved in 200 μL of DMSO and added dropwise to the oligonucleotide solution. The conjugation was allowed to proceed for 1 hour.

Afterwards excess initiator was removed by dialysis against water for 3 days (MWCO 6–8 K), after dialysis 26 mL of oligonucleotide solution was collected. The oligonucleotide content was quantified by measuring the optical density at 260 nm. A total of 5246 mg of the oligonucleotide was recovered (0.4 mmol). The oligonucleotide solution was split into aliquots and lyophilized.

Oligonucleotide polymerization (conjugate 1). Initiator 1 (1750 μg , 0.135 μmol), TriEGMA (204 mg, 829 μmol) and Polyfluor 570 (70 μg , 0.1 μmol) were dissolved in DPBS buffer (900 μL). The solution was degassed by purging with argon for 15 minutes on a icebath. The polymerization was initiated by the addition of TPMA (3.9 mg, 13.4 μmol), Cu(I)Br (0.33 mg, 2.31 μmol) and Cu(II)Br₂ (1.03 mg, 4.63 μmol) in DPBS (100 μL). The reaction was left to polymerize for 4 hours at 4 $^\circ\text{C}$, afterwards the reaction was stopped by exposing the solution to air. The product was purified by dialysis at 4 $^\circ\text{C}$ against water containing EDTA and then pure water. The purified solution was aliquoted and lyophilized. 6 mg of the pink oligonucleotide block copolymer was collected (conjugate 1).

Oligonucleotide conjugation (initiator 2). Hybrid 1 (7.85 mg, 0.6 μmol) was resuspended in DPBS (7 mL) and the pH of the solution adjusted to 7.5. **3** (50 mg, 104 μmol) was dissolved in 300 μL of DMSO and added dropwise to the oligonucleotide solution. The conjugation was allowed to proceed for 1 hour. Excess initiator was removed by dialysis against water (MWCO 6–8 K), after which the solution was lyophilized. The lyophilised oligonucleotide was then resuspended in DNase free water (2.5 mL) and passed through a PD10 desalting column. The oligonucleotide content was quantified by measuring the optical density at 260 nm. Recovery of initiator 2 was 5670 mg (72% yield). The oligonucleotide solution was split into 3 aliquots and lyophilized.

Oligonucleotide polymerization (conjugate 2). Initiator 2 (1.890 mg, 0.145 μmol) and TriEGMA (204 mg, 829 μmol) were dissolved in DPBS (600 μL). Fluorescein *O*-methacrylate (1.23 mg, 3 μmol) was dissolved in 69 μL of DMSO and added to the oligonucleotide solution. TPMA (5.16 mg, 18.4 μmol) and Cu(II)Br₂ (1.37 mg, 6.1 μmol) in DPBS (200 μL) were added to the oligonucleotide solution and the flask sealed with a rubber septum. The solution was placed in a water icebath at 4 $^\circ\text{C}$ and degassed by purging with argon for 15 minutes. After degassing 70 μL of a solution containing sodium ascorbate (0.188 mg, 0.95 μmol) was added to initiate the polymerization. The reaction was left to polymerize at 4 $^\circ\text{C}$, after 6 hours the reaction was stopped since solution had become very viscous. The solution was diluted with DNase free water and purified by dialysis at 4 $^\circ\text{C}$ against water–ethanol (9/1) containing EDTA and then against pure water for 3 days in total. The remaining solution was centrifuged and then filtered through a 0.45 μm MCF syringe filter in order to remove any precipitate from the solution. 8.4 mg of the greenish oligonucleotide block copolymer was collected after lyophilisation.

Protocols for loading doxorubicin in conjugates

Conjugate 1. Conjugate 1 (300 μg , 0.01 μmol) was dissolved in 0.5 mL of DNase free water. Doxorubicin hydrochloride solution (85 μg , 0.15 μmol) and triethylamine (726 μg , 7 μmol) were added to the polymer solution and allowed to equilibrate for 1 h.



Triethylamine and free doxorubicin were removed by passing the solution through a PD25 minitrap column (GE Healthcare). Drug loading was determined by measuring the absorbance of the polymer solution at 480 nm in 1/1 water–DMSO and comparing to a doxorubicin hydrochloride standard curve in the same solvent.

Conjugate 2. Conjugate 2 (4000 µg, 0.05 µmol) was dissolved in 3.5 mL of DNase free water. Doxorubicin-HCl solution (400 µg, 0.69 µmol) and triethylamine (726 µg, 7 µmol) were added to the polymer solution and allowed to equilibrate for 1 h. Triethylamine and free doxorubicin were removed by passing the solution through a PD10 column (GE Healthcare). Drug loading was determined as before.

Hybrid 1. Hybrid 1 (689 µg, 0.056 µmol) was dissolved in 0.875 mL of DNase free water. Doxorubicin hydrochloride solution (204 µg, 0.35 µmol) and triethylamine (726 µg, 7 µmol) were added to the polymer solution and it was left to equilibrate for an hour. Triethylamine and free doxorubicin were removed by passing the solution through a PD10 column.

In all cases drug loading was determined by measuring the absorbance of the DNA solution at 480 nm in 50% water–50% DMSO and comparing to a doxorubicin hydrochloride standard curve.

Cell culture

General procedure. A549 cells (human alveolar adenocarcinoma cell line) were seeded on a 96-well plate (100 µL per well, 5×10^4 cells per mL) using Eagle's minimum media containing 10% FCS and 4 mM L-glutamine. Cells were allowed to attach for 24 h at 37 °C in a 5% CO₂ atmosphere before the media was removed and replaced with 100 µL of media that contained the appropriate treatment.

Determination of doxorubicin IC₅₀. Cells were incubated with varying concentrations of doxorubicin HCl for 72 hours before metabolic activity was determined using a MTT assay. The assay was performed by aspirating the media and replacing it with 100 µL of media containing 1 mg mL⁻¹ of MTT. The MTT solution was incubated for 2 hours at 37 °C, afterwards the solution was carefully aspirated. The resulting formazan crystals were dissolved in DMSO (100 µL) and the absorbance 560 nm read using a plate reader (Tecan M200). Untreated cells (media only) were used as a control for 100% metabolic activity. 6 wells were used to test each concentration. Doxorubicin-HCl IC₅₀ values were calculated using GraphPad Prism 5 (EC50 Shift model).

Cytotoxicity of doxorubicin loaded conjugates. Cells were treated with doxorubicin HCl, doxorubicin:DNA complex and DNA conjugate alone. When doxorubicin-HCl was used a concentration of 0.11 µM (half calculated IC₅₀) was maintained. Cells were incubated for 72 hours before the media was aspirated. Metabolic activity of each well was determined using a MTT assay and compared to untreated cells, 6 wells were used to test each compound.

Measurements and analysis

Gel permeation chromatography (GPC) analysis of polymers. Gel permeation chromatography was performed on a Polymer

Labs GPC 50 Plus system fitted with a differential refractive index detector. Separations were performed on a pair of PLgel Mixed-D columns (300 × 7.8 mm, 5 µm bead size, Polymer Labs UK) fitted with a matching guard column (50 × 7.8 mm). The mobile phase was 95/5 chloroform–triethylamine at a flow rate of 1 mL min⁻¹. Column calibration was achieved using narrow polystyrene standards (160 Da–240 kDa, Polymer Labs, UK). Conjugate 1 was prepared at 1 mg mL⁻¹ in phosphate buffer saline at pH 7.4 and reduced using TCEP. The polymer was subsequently extracted into chloroform. 100 µL of the chloroform polymer solution was injected onto the column. Molecular weights and polydispersity indices were calculated using Polymer Labs Cirrus 3.0 Software.

Spectroscopy. ¹H and ¹³C NMR spectra were recorded on a Bruker 400 spectrometer at 399.8 MHz (¹H) and 100.5 MHz (¹³C) in chloroform-d. All chemical shifts are reported in ppm relative to TMS. HRMS spectra were recorded on an ESI-TOF Waters 2795 separation module/micromass LCT platform. UV/Vis spectrometry was carried out on a Beckman Coulter DU 800 UV spectrophotometer. Fluorescence spectra were recorded using a Varian Cary Eclipse fluorescence spectrophotometer.

PAGE analysis. Polyacrylamide gel electrophoresis (PAGE) analysis was carried out at 160 mV using a 15% acrylamide running gel. Native gels were prepared using acrylamide–bis-acrylamide (29 : 1) and TBE (1×) solutions. 1 µg equivalence of the appropriate oligonucleotide was loaded into each well. The oligonucleotide/polymer bands were visualized either using methylene blue or Stains All staining. IDT Oligo Length Standard 10/60 was used as a size marker for the gels.

Poly(TriEGMA) quantification – barium/iodine staining. Poly(TriEGMA) homopolymer (*M_n* 20 kDa) was dissolved in water and samples in the range of 10 µg mL⁻¹ to 25 µg mL⁻¹ were prepared. Samples (1 mL) were incubated with BaCl₂ solution (250 µL, 5% in 1 N HCl) and iodine solution (250 µL, 1.27% I₂ and 4% KI (w/v)). The solution was incubated at room temperature for 15 minutes. Sample absorbances were subsequently read at 535 nm on a UV/Vis spectrometer. Unknown samples were treated in the same way and their concentration calculated from the standard curve obtained from the poly(TriEGMA) homopolymer samples of known concentration.

Atomic force microscopy (AFM). Topography images and particle analysis of DNA–polymer conjugates were obtained in liquid using a Multimode 8 Scanning Probe Microscopy station, operating in PeakForce Tapping™ mode. Images were acquired using an E-scanner, at scan rates between 1–3 Hz, setpoint of ~0.04 V with a resolution of 512 × 512 pixels.

AFM studies were carried out across varying temperature ranges. For low temperature studies, the sample tubes were cooled in an ice bath prior to imaging and studies were carried out in a pre-cooled room. For studies above room temperature, an external heating stage (Nanoscope, Bruker, Santa Barbara, CA) was used, enabling imaging at controlled temperatures up to 40 °C. In all cases, images were obtained on freshly cleaved mica substrates pre-incubated with 10 mM MgCl₂ solution for 10 min, and washed with distilled water several times and blown dry completely with nitrogen at room temperature before



sample addition. The polymer–DNA conjugate samples were prepared at a concentration of $10 \mu\text{g mL}^{-1}$ in DPBS buffer (filtered through a $0.22 \mu\text{m}$ syringe filter). For AFM studies, topography images were captured and grain size analysis of the particles were carried out from image data (NanoScope Analysis software – Version 1.20 (Bruker)). Samples were left for at least 30 min following temperature increases, to allow samples to equilibrate prior to resuming imaging.

Variable-temperature AFM studies with polymer–DNA conjugates were performed either by heating aqueous sample solutions directly on the surface of the mica while using the AFM probe (*in situ* studies), or by heating–cooling samples in a small vial prior to transfer to the AFM chamber and subsequent imaging (*ex situ* studies).

AFM studies of the effect of competing DNA sequences on the conjugates were performed by injecting a mixture of pre-hybridised polymer–DNA conjugates and the complementary DNA (with the ratio of 1:5) onto magnesium coated mica. Conjugates were then imaged directly in the AFM chamber at temperatures between 15–40 °C, or pre-incubated with the complementary strand in a separate vial at the desired temperature before addition into the AFM chamber maintained at the same incubation temperature.

The effects of reducing agents on the polymer–DNA conjugates were evaluated by adding a solution of TCEP in DPBS (5 mM) to the conjugate solution ($10 \mu\text{g mL}^{-1}$) with the ratio of 1:1 (v/v) with 5 min incubation time before injection of the sample onto magnesium coated mica in the AFM chamber.

Zeta potential measurements. Zeta potential measurements of the DNA–polymer conjugates were measured using a Malvern Zetasizer Nano ZS. Measurements were performed at 15, 25, 30, 35 and 40 °C. The system was then cooled to 15 °C and measurements were carried out to examine disaggregation behaviour. Prior to analysis, samples were equilibrated for 15 minutes at the target temperature. A minimum of three measurements were performed at each temperature. Afterwards a continuous study from 15 °C to 40 °C and from 40 °C to 15 °C was performed. All samples were prepared in DPBS buffer.

Dynamic light scattering (DLS). Hydrodynamic radii of the DNA–polymer conjugates in solution were measured *via* scattered light recorded at a 90° angle to incident radiation in a Viscotek 802 DLS instrument equipped with a 50 mW internal laser operating at a wavelength of 830 nm. From standard auto correlation functions, measured diffusion coefficients were related to particle hydrodynamic radius *via* the Stokes–Einstein equation,

$$R_H = kT/6\pi\eta D$$

where R_H is the hydrodynamic radius, k is the Boltzmann constant, T is the temperature, D is the diffusion coefficient, and η is the viscosity of the solvent. Additionally it was assumed that particles were spherical and non-interacting.

The measurements of particle sizes of the conjugates were performed at 15, 25, 30, 35 and 40 °C in DPBS buffer. Variable temperature particle size assays were carried out by cooling the system to 15 °C and re-measuring to examine disaggregation

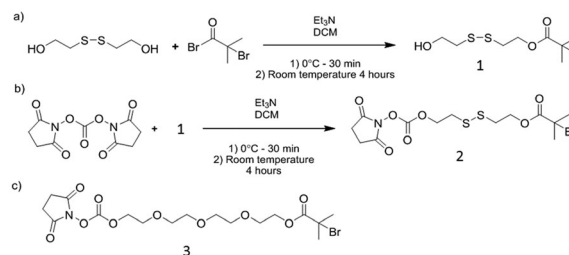
behaviour. Then complementary DNA (oligo 3) was added to the solution and particle sizes examined at 15, 30 and 40 °C. Afterwards the conjugates were examined before and after addition of complementary strands at 15 and 30 °C, and finally before and after incubation with TCEP at 30 °C. Samples were heated for 15 min at the target temperature before measurements. All samples were prepared in DPBS buffer.

Results and discussion

The new DNA–polymer hybrids were synthesised using a ‘grafting from’ approach *via* controlled polymerisation techniques. Atom Transfer Radical Polymerisation (ATRP) was chosen due to wide tolerance of functionality and applicability in ambient aqueous conditions.³⁴ ATRP initiators with amino-reactive *N*-hydroxysuccinimidyl carbonate bromoisobutyrate ester moieties were synthesised containing either a reducible disulfide (2) or a redox stable oligo ethylene glycol linker (3, Scheme 1).

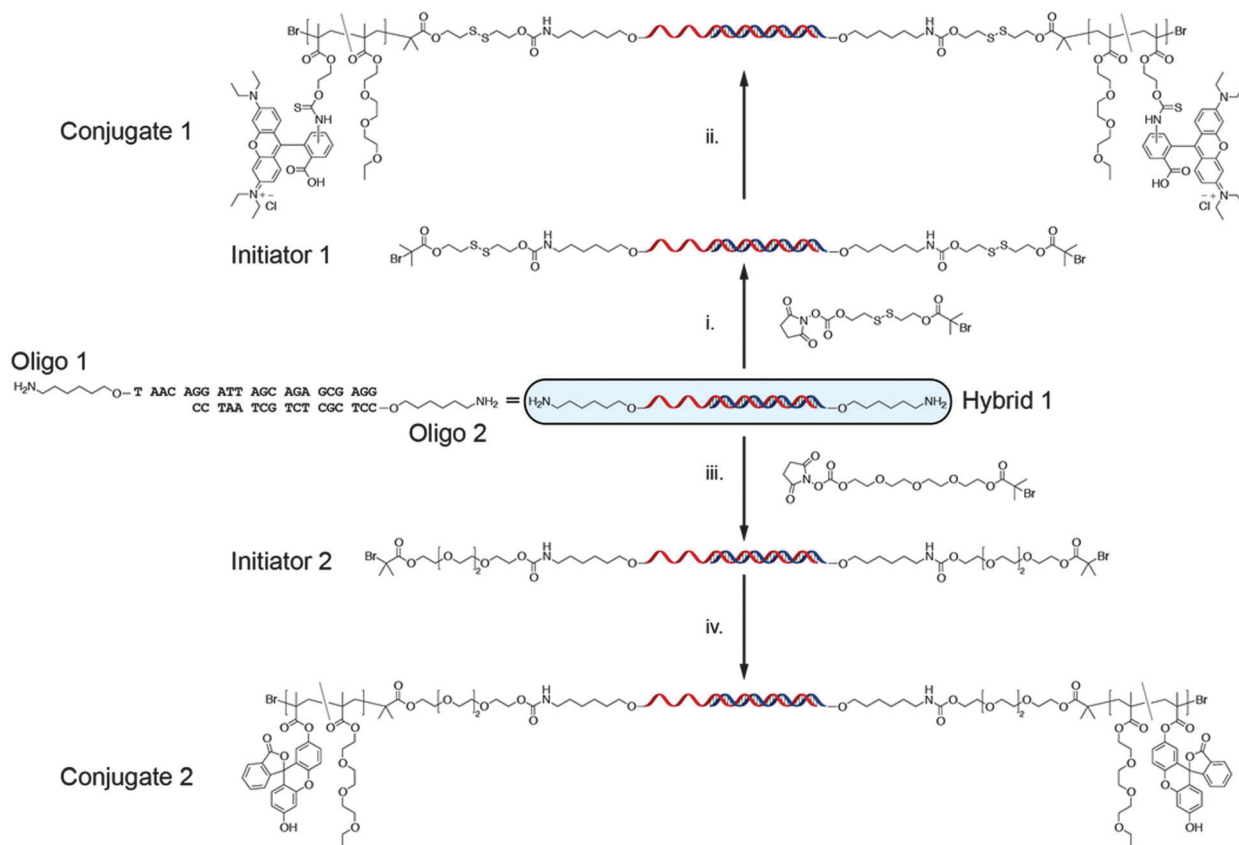
The DNA assembly consisted of a 22 base strand (oligo 1) and a 17 base strand (oligo 2). Oligo 2 was complementary to 17 bases from the 3'-terminus of oligo 1. Upon hybridisation of the strands a 5-base overhang, or ‘toehold’, of single stranded DNA was left at the 5' terminus of oligo 1 to allow facile displacement in the presence of a strand fully complementary to oligo 1. We therefore envisaged an AB–B*A structure would be formed when polymers were grown from opposite ends of the DNA sequences, but which could disassemble to form ABC and AB* structures on addition of the complementary ‘C’ strand.

Both oligonucleotides contained amine moieties at their 5' termini which were transformed into ATRP initiators by reaction with either 2 or 3. Two classes of conjugate had been intended in these studies, with the responsive polymer part of the conjugate connected to DNA *via* either a reducible or non-reducible link. Accordingly, reaction of 2 (with a reducible disulfide link) and 3 (no reducible link) with hybrid 1 *i.e.* pre-annealed oligo 1 (5' TAA CAG GAT TAG CAG AGC GAG G, 5' C6-NH₂) and oligo 2 (5' CCT CGC TCT GCT AAT CC, 5' C6-NH₂), yielded the macroinitiator conjugates initiator 1 and 2 respectively (Scheme 2). ATRP in aqueous conditions, with TriEGMA as a monomer known to exhibit LCST behaviour when polymerised, generated soluble block copolymer materials. Two fluorescent monomers, Polyfluor 570 and fluorescein *O*-methacrylate were also incorporated into the polymer chains to facilitate subsequent polymer analysis. In addition, the two classes of conjugates were prepared with different polymeric chain lengths in



Scheme 1 Synthesis of heterobifunctional ATRP-initiators.





Scheme 2 Synthesis of polymer–DNA conjugates. (i) Conjugation of hybrid 1 to a reducible ATRP initiator. (ii) TriEGMA/polyfluor 570 ATRP polymerisation of initiator 1. (iii) Conjugation of hybrid 1 to a non reducible ATRP initiator. (iv) TriEGMA/fluorescein O-methacrylate ATRP polymerisation of initiator 2.

order to probe the effect of the thermoresponsive polymer on DNA stability and the polymeric chain length in terms of packing properties of the structures. Responsive polymer conjugate 1 contained shorter polymeric blocks linked to the DNA sequences by disulfide bonds, while the second material, with longer polymer chains and without disulfide linkers was denoted as conjugate 2 (Scheme 2).

Primary characterisation of the conjugate materials was *via* gel electrophoresis and UV-Vis spectroscopy. Success of polymer growth was demonstrated by disappearance of sharp DNA-oligomer bands from polyacrylamide gel electrophoresis (PAGE) experiments, and quantification of pTriEGMA with barium/iodine staining in comparison with optical density at 260 nm to determine oligonucleotide content (Fig. S1, ESI[†]). Thus, while no free oligonucleotide bands corresponding to the initiator-functionalised annealed double strands (initiator 1 and 2) or any residual single strand components (oligo 1 and 2) were apparent in the PAGE experiments, a broad smear on the gel was visible in the lane corresponding to the polymer–DNA conjugates. Comparison of the UV/vis absorptions of the pTriEGMA and DNA blocks of the conjugates enabled a molar mass of the polymer part to be determined as 30 kDa for conjugate 2 (Fig. S1 and Table S1, ESI[†]). Molar mass of the polymer conjugate 1 was found to be 8 kDa by GPC analysis after separation of the DNA portion by TCEP.

Biophysical studies of polymer–DNA conjugates

In order to probe the solution behaviour of the polymer–DNA conjugates in response to stimuli, AFM, zeta potential measurements and DLS were employed as the primary techniques. Specifically these experiments aimed to address conjugate morphology, size, and surface charge in response to a number of stimuli including temperature, addition of complementary DNA strands and action of reducing agents. AFM has previously been used to study a range of DNA-hybrid materials so was considered particularly relevant to this study.^{35–37}

Initial experiments, carried out with freshly cleaved mica as the AFM substrate, showed no attachment of polymer–DNA conjugates at the surface of the mica under aqueous conditions. Pre-treatment of mica with MgCl₂ solution followed by a wash step to remove unbound cations resulted in rapid attachment of particles to the surface. This suggested that the polyanionic DNA segments were accessible at the surface of the particles, either forming a corona layer or at least partially projecting from the surface.

Thermal response studies with conjugate 1

Two experimental designs were used to investigate the surface properties and self assembly behaviour of conjugate 1 at various temperatures. These involved (a) imaging the conjugates



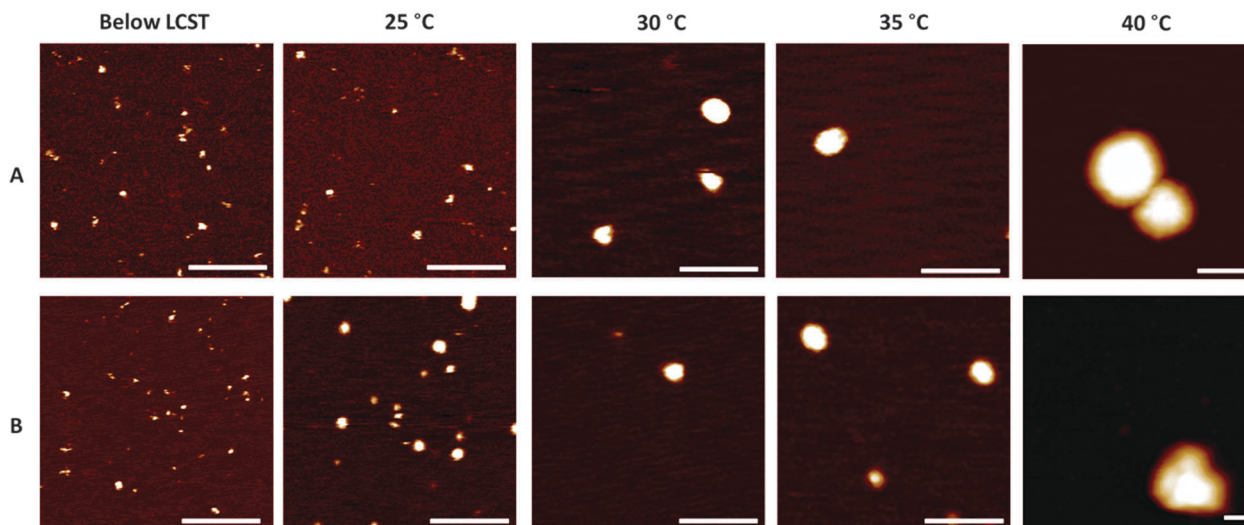


Fig. 2 (A) AFM topography images of *in situ* aggregation studies of conjugate 1 below the LCST and at 25, 30, 35 and 40 °C, (B) *ex situ* aggregation studies of conjugate 1 below the LCST and at 25, 30, 35 and 40 °C. (Scales bars: 100 nm for all images. Vertical scales: 3 nm for all images at below the LCST and 25 °C, 4 nm for all images at 30 and 35 °C, 80 nm for *in situ* studies at 40 °C, and 130 nm for *ex situ* studies at 40 °C. Please see ESI,† Fig. S3 for more images obtained at 40 °C, and Table S3 for the AFM height measurements of the conjugates.)

during temperature ramp experiments directly in the AFM sample chamber, *i.e.* *in situ* imaging of response; and (b) carrying out the temperature ramp *ex situ* in a sample vial and rapidly transferring the conjugates to the AFM chamber for imaging.

AFM topography images (Fig. 2) indicated that conjugate 1 formed particles that were approximately spherical under all conditions investigated and the size of the conjugates increased with temperature. AFM *in situ* images obtained at temperatures below the expected phase transition temperature of the pTriEGMA blocks indicated the mean diameters of conjugate 1 particles were around 6 nm, increasing to ~28 nm at 35 °C and 161 nm at 40 °C (Table 1). These data suggested that the 8 kDa pTriEGMA chains attached to the oligonucleotide sequences did not exhibit strong and persistent structures at the lowest temperatures, as the hybridised oligos would be expected to have dimensions of 4–5 nm through their 17 paired bases under these conditions.

Ex situ aggregation studies performed on the same conjugate showed very similar size–temperature profiles (Table 1) at

all temperatures up to 40 °C, suggesting that conjugate structure and self-assembly was not markedly affected by attachment to the Mg²⁺-coated mica surface. However, conjugates held at 40 °C *ex situ* prior to imaging formed particles which were much larger and more polydisperse compared to the same conjugates imaged with *in situ* temperature changes. This suggested that, as expected, attachment of the particles to mica impeded full aggregation.

Intriguingly, according to both the *in situ* and *ex situ* temperature-response AFM imaging studies, the size of the particles increased over the temperature range (~15–40 °C) spanning the known lower critical solution temperature (LCST) of pTriEGMA (26 °C), but without uncontrolled aggregation. However at temperatures well above the LCST, *i.e.* 40 °C, the size of the particles increased significantly, suggesting a secondary aggregation phenomenon around physiological temperatures.

DLS studies of conjugate 1 were carried out over the same temperature range probed by AFM, but with heating periods of 15 min at each target temperature before measurements of particle size. These data indicate particle sizes in reasonable accord with those obtained by AFM. However, the DLS data show features consistent with size dispersity, for example high scatter from the larger particles in the sample apparent in the intensity distribution data, and also some evidence of the reductive cleavage of polymers from the DNA segments (Fig. S4, ESI†). It should also be noted that the size of features measured by AFM is a function of the finite size of the apex of the AFM probe, whilst it is the hydrodynamic radius of the particles that is measured by DLS. Hence an exact correlation of measured particle sizes obtained *via* these different techniques was not expected. The height of features measured by AFM can also be influenced by the compressive forces applied by the imaging probe, and the heights of the particles were indeed found to be far smaller than the lateral dimensions of particles measured

Table 1 AFM particle analysis results of features observed in the *in situ* and *ex situ* temperature-ramp studies, DLS mass and number distribution results and the average of three zeta potential measurements of conjugate 1

	D_{AFM}^a (nm)	D_{AFM}^b (nm)	D_h^c (nm)	D_h^d (nm)	Zeta potential (ζ , mV)
Below LCST ^e	6 ± 2	6 ± 3	3 ± 1	2 ± 1	-14 ± 1
25 °C	7 ± 2	11 ± 3	5 ± 2	5 ± 2	-18 ± 2
30 °C	22 ± 6	22 ± 5	19 ± 7	18 ± 7	-26 ± 2
35 °C	28 ± 6	28 ± 7	23 ± 6	21 ± 6	-28 ± 4
40 °C	161 ± 22	317 ± 601	161 ± 26	113 ± 35	-30 ± 1

^a Diameter of particles by AFM *in situ* temperature ramp studies.

^b Diameter of particles by AFM *ex situ* temperature ramp studies.

^c Hydrodynamic diameter of particles by DLS mass distribution.

^d Hydrodynamic diameter of particles by DLS number distribution.

^e DLS and zeta potential studies carried out at 15 °C.



by AFM and the diameters obtained by DLS (please see ESI,† Table S3). Nevertheless, the estimates of the particle size from the number and mass distribution DLS data suggested a similar temperature dependent pattern of conjugate solution behaviour as that indicated by AFM imaging (Table 1); again, a two-stage response to temperature was observed, with an initial change in particle size apparent between 25–30 °C and full aggregation at 40 °C.

The effect of temperature on surface charge was estimated using zeta potential measurements (Table 1). Conjugate 1 was negatively charged across the temperature range, most likely due to the phosphate groups of the DNA blocks, and again indicative of a surface corona of DNA segments in the particles. The magnitude of the negative charge increased with temperature probably as a result of enhanced display of the DNA segments as the thermoresponsive pTriEGMA blocks collapse to form a hydrophobic core above the polymer LCST. The change in zeta potential was fully reversible (Fig. S5, ESI†), suggesting that pTriEGMA chain collapse above the LCST in the block co-polymers did not result in uncontrolled aggregation under these conditions.

Thermal response studies with conjugate 2

With a view to exploring the effects of a longer pTriEGMA chain on the association behaviour of the block co-polymers, thermal response studies were carried out on the second material, conjugate 2. The *in situ* variable-temperature AFM and DLS studies showed a very similar pattern of assembly to that obtained for conjugate 1, with the exception of particle sizes at 40 °C (Fig. 3 and Table 2). Discrete particles rather than large aggregates were formed above 35 °C, and the changes in particle size and zeta potential were fully reversible across the full temperature range (Fig. S5 and S7, Table S4, ESI†). We attribute this to the longer pTriEGMA chains in the conjugate. Support for this assertion also arose from the difficulties in visualisation of conjugate 2 by aqueous phase AFM, indicative of a highly hydrated surface layer of the conjugates under all conditions (Fig. S6, ESI†).

Polymer–DNA conjugate response to competitive hybridisation

The second programmed response mode of the conjugates was based around the internal linking of the A–B polymer–DNA blocks *via* the DNA sequences with 5 base-pair overhangs into

Table 2 AFM particle analysis results of features observed in the *in situ* temperature-ramp studies, DLS mass and number distribution results and the average of three zeta potential measurements of conjugate 2

	D_{AFM}^a (nm)	D_{h}^b (nm)	D_{h}^c (nm)	Zeta potential (ζ , mV)
Below LCST ^d	10 ± 3	7 ± 2	7 ± 3	−11 ± 2
25 °C	15 ± 5	14 ± 9	14 ± 11	−20 ± 1
30 °C	22 ± 10	16 ± 5	16 ± 8	−21 ± 1
35 °C	23 ± 8	20 ± 6	20 ± 3	−24 ± 1
40 °C	34 ± 14	24 ± 8/111 ± 20	24 ± 14	−28 ± 1

^a Diameter of particles by AFM *in situ* temperature-ramp studies.

^b Diameter of particles by DLS mass distribution. ^c Diameter of particles by DLS number distribution. ^d DLS and zeta potential studies carried out at 15 °C.

the AB–B*A structure (Fig. 1). Addition of a third DNA strand, oligo 3, complementary to one of the sequences holding the hybridised block co-polymers together, resulted in changes in the observed molar masses and hybridisation states as reported by gel electrophoresis (Fig. S2, ESI†).

In order to probe the structures of the conjugates in further detail, AFM and DLS experiments were performed. At temperatures below the LCST of the pTriEGMA blocks AFM micrographs were dominated by preferential adsorption of the competing strands (added in excess to the conjugates) to the metal-ion doped mica surface. However, when oligo 3 was added to conjugate 1 at temperatures of 30 °C or above in the AFM sample chamber, grain size analysis indicated an overall reduction in mean diameters of particles present from 22 ± 6 nm to 18 ± 3 nm (Fig. 4 and Table 3).

Two populations of particles were discernible in AFM after addition of the competing DNA strand, with mean diameters of ~15 nm and ~26 nm, which we attribute to the presence of polymer–DNA ABC blocks as well as B*A and residual AB–B*A polymer–DNA conjugates. DLS studies confirmed the size reduction of one component of the sample but also the heterogeneity of the samples following competing strand addition. Having noted that conjugate 1 AB–B*A blocks had self-assembled to form larger structures at 40 °C than 30 °C, we assessed the sensitivity of the conjugates to complementary strand addition at the higher temperature. As is apparent from Table 3, the resultant species, although heterogeneous in overall diameter, were markedly smaller than those present before addition of the complementary oligo 3 strand.

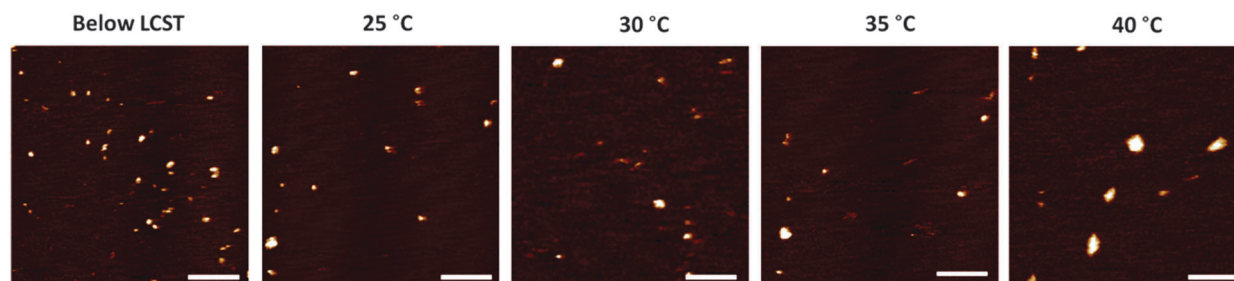


Fig. 3 AFM topography images of *in situ* aggregation studies of conjugate 2 below the LCST and at 25, 30, 35 and 40 °C. (Scale bars: 100 nm, vertical scales: 4 nm for all images. Please see ESI,† Table S3 for the AFM height measurements of the conjugates.)



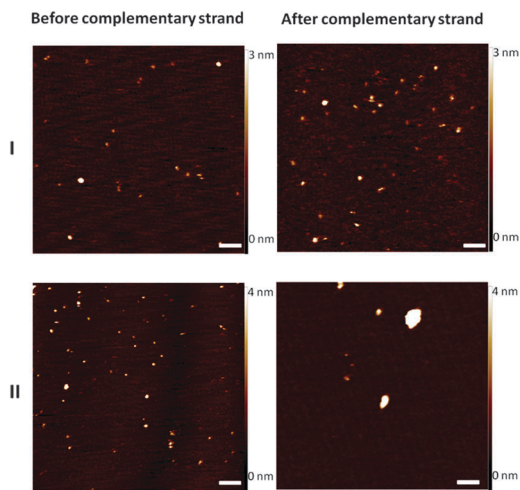


Fig. 4 AFM topography images of conjugates before and after adding complementary group *in situ* at 30 °C (I); conjugate 1; (II); conjugate 2. (Scale bars: 100 nm for all images. Please see Fig. S8 and Table S5, ESI†)

The same experiments were carried out with conjugate 2 AB-B*A blocks, as it was expected that the longer pTriEGMA chains in these materials might sterically hinder the approach of the complementary strand to the linking B-B* hybridised sequence. The obtained particle size data were more complex for these conjugates, as heterogenous samples were obtained at both 30 °C and 40 °C, however, the change in overall diameters of the observed particulate species following addition of the competing strands suggested that some change in hybridisation state of the AB-B*A conjugates had likely occurred.

Response of polymer–DNA conjugates to a reducing environment

The conjugates 1 and 2 differed not only in chain length of the grown pTriEGMA blocks but also in the way these were attached

to the DNA strands, with a reductively cleavable disulfide link in conjugate 1 but a noncleavable oligoethyleneoxide sequence in conjugate 2. In order to probe the response of the conjugates to a reducing environment we added the reducing agent TCEP, which has similar reductive potential to that occurring *in vivo*, but which has less tendency to precipitate in the AFM sample chamber than the biological reductant glutathione.

Accordingly, conjugates 1 and 2 were imaged by AFM in fluid at 30 °C as a solution of TCEP was injected into the sample chamber. As apparent from AFM images, time dependent changes in size and morphology were apparent up to a duration of 77 minutes. The data show sizes and heights of observed structures were reduced over time and a number of elongated features formed which differed qualitatively from the mostly spherical starting components (Fig. 5). No changes were observed for conjugate 2 structures in the corresponding experiment (Fig. S11 and S12a, ESI†). In order to check that any new structural features occurring in conjugate 1 following reduction were not solely a consequence of anchorage to the mica substrate, TCEP was mixed with separate solutions of conjugates 1 and 2, and the mixtures injected onto magnesium coated mica after a 5 minute incubation time. For conjugate 1 it was observed that the size of the features reduced to 7 nm, *i.e.* of similar dimensions to those expected for dsDNA of 22 bases, and a number of elongated and ‘doughnut’ structures were again observed (Fig. 6). However, no change in size or shape occurred for conjugate 2 under the same reducing conditions. (Fig. S11b and c, ESI†).

Evaluation of polymer–DNA conjugates as drug delivery systems

The possibility of using the multi-responsive polymer–DNA conjugates as drug delivery systems was investigated in preliminary experiments using doxorubicin as a drug capable

Table 3 AFM and DLS data before and after addition of complementary DNA strands to conjugates

		Conjugate 1 before			Conjugate 1 after		
		D_{AFM}^a (nm)	D_h^b (nm)	D_h^c (nm)	D_{AFM}^a (nm)	D_h^b (nm)	D_h^c (nm)
30 °C	Mean value	22 ± 6	22 ± 5	19 ± 7	18 ± 6	—	—
	Population I				15 ± 3	11 ± 3	11 ± 3
	Population II				26 ± 4	—	—
40 °C	Mean value	161 ± 22	161 ± 26	113 ± 35	50 ± 15	—	—
	Population I				39 ± 5	41 ± 14	39 ± 16
	Population II				60 ± 14	227 ± 37	—
		Conjugate 2 before			Conjugate 2 after		
		D_{AFM}^a (nm)	D_h^b (nm)	D_h^c (nm)	D_{AFM}^a (nm)	D_h^b (nm)	D_h^c (nm)
30 °C	Mean value	22 ± 10	16 ± 5	16 ± 8	34 ± 19	—	—
	Population I				17 ± 3	12 ± 4	11 ± 6
	Population II				38 ± 19	51 ± 24	—
40 °C	Mean value	34 ± 14	24 ± 8	24 ± 14	60 ± 22	—	—
	Population I				38 ± 7	34 ± 18	34 ± 11
	Population II		111 ± 20		74 ± 16	302 ± 26	—

^a Diameter of particles by AFM grain size analysis following addition of oligo 3 *in situ*. ^b Diameter of particles by DLS mass distribution. ^c Diameter of particles by DLS number distribution.



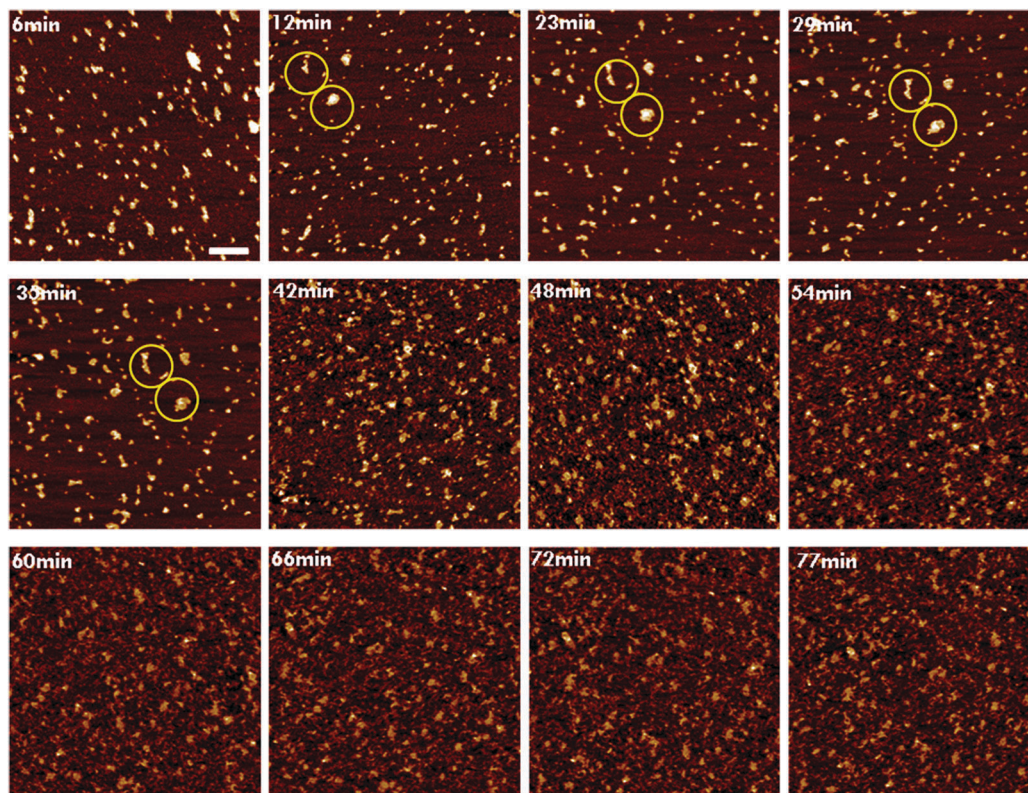


Fig. 5 AFM topography images of conjugate 1 in *in situ* studies after addition of TCEP at various time points. Scale bar: 100 nm, vertical scale: 3 nm in all images.

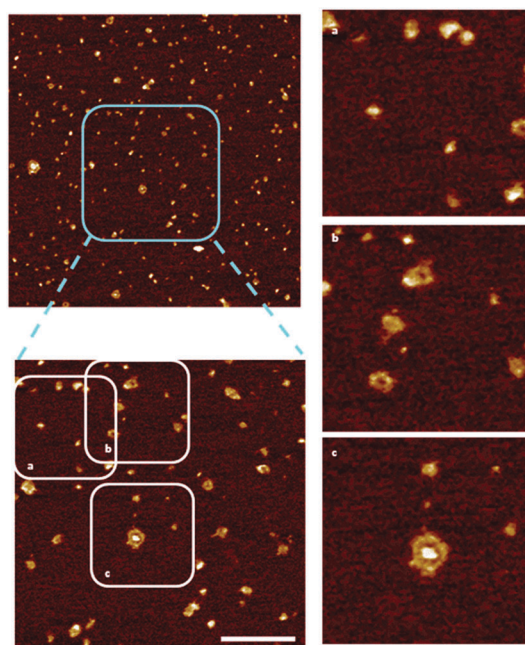


Fig. 6 AFM topography images of conjugate 1 after addition of reducing agent and the morphologies of the structures after addition of reducing agent in *ex situ* studies. TCEP was mixed with separate solutions of conjugate 1, and the mixtures injected onto magnesium-coated mica after a 5 minute incubation time. (Scale bar: 100 nm, vertical scales: 3 nm.)

of binding to double-stranded DNA, and A549 cells as a representative cancer cell line. Specifically we wanted to evaluate whether the conjugates might (a) self-assemble into structures of appropriate size for extended circulation (5–200 nm), (b) carry a cytotoxic dose of doxorubicin, and (c) alter conformation in response to addition of a complementary nucleotide sequence to release the cytotoxic. For these studies we aimed for proof-of-concept with a response mode designed around a DNA strand complementary to the B–B* link, in order to alter the AB–B*A structures extracellularly, as might be required for tumour tissue-localised doxorubicin delivery.

We demonstrated that the native double stranded oligonucleotide had a very strong affinity towards doxorubicin (Fig. S12, ESI†). Initial assays established that the polymer–DNA conjugates could be loaded with doxorubicin and that weight ratios of up to 0.06 doxorubicin:conjugate could be achieved. The conjugate 1 could be loaded to a higher weight ratio with doxorubicin than conjugate 2, as expected based on the higher DNA:polymer ratio in conjugate 1.

Measurements of metabolic activity (MTT assay) indicated that both polymer–DNA conjugates were well tolerated by the A549 cell line with no loss in viability in the absence of doxorubicin (Fig. 7 and Fig. S14, ESI†). Polymer–DNA conjugates and their constituent oligonucleotides combined with doxorubicin were toxic at concentrations of 0.11 mM drug, and fluorescence due to doxorubicin was clearly apparent in cell images after 24 and 48 h (Fig. S15, ESI†). Perhaps surprisingly, the free doxorubicin was less toxic at the same dose than the



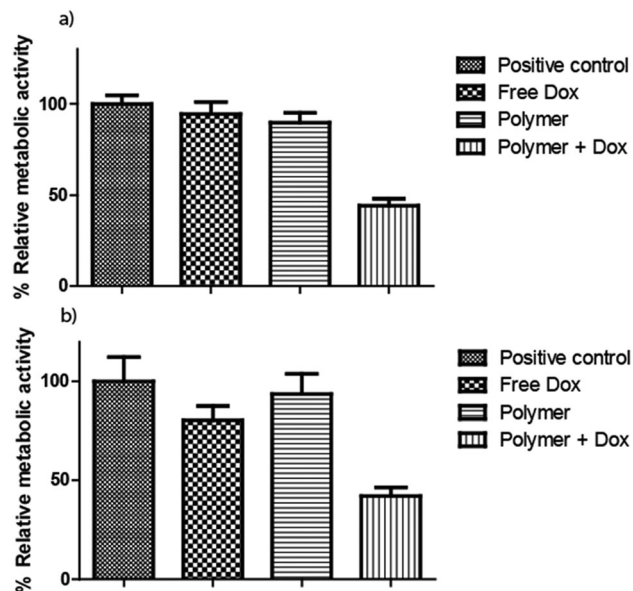


Fig. 7 Cytotoxicity of free doxorubicin in A549 cells, doxorubicin bound to oligonucleotides and conjugate 1 (a) and doxorubicin bound to conjugate 2 (b).

polymer–DNA conjugates and the double-stranded DNA sequence with intercalated doxorubicin. The same cytotoxicity profile was apparent for conjugate 2.

However, addition of the complementary oligonucleotide strand to oligo 1, which had been shown to compete effectively with the B–B* hybridisation in gel electrophoresis (Fig. S2, ESI†), AFM and DLS assays, did not result in overall enhanced cytotoxicity. Cell metabolic activity was not further reduced by addition of either complementary or scrambled DNA strands (Fig. S14, ESI†). It may have been the case that the complementary and scrambled single strand oligonucleotides may have been degraded by DNases in the extracellular media before they could interact with the DNA sequences in the polymer conjugates, but this is unlikely based on the stabilities of the oligonucleotides observed in our prior assays. The fact that displacement of oligo 1 by oligo 3 was readily observed in gel electrophoresis, and also that DLS and AFM showed observable changes in conjugate structure with complementary strand addition, implies another mechanism for the lack of enhancement of doxorubicin-induced cytotoxicity expected from DNA hybrid disruption. Recent studies of ‘DNA origami’ systems,^{38–42} in which oligonucleotides were designed to transport and release doxorubicin to cancer cells, have indicated that conformational changes in double-stranded DNA sequences could be used to encode variable affinities for doxorubicin binding within the base pair complementary regions.⁴³ These variable affinities arise from the way in which doxorubicin binds to different base-pair sequences in DNA,⁴⁴ but it should also be noted that doxorubicin itself also alters the twist and pitch of double-stranded DNA when bound. Indeed, this phenomenon has recently been exploited wherein specifically designed DNA sequences with varying degrees of twist have been shown to exhibit tuneable affinities for the drug.⁴³

Although we were not able to probe in sufficient detail the structures of the doxorubicin-loaded polymer–DNA conjugates to assign changes in hybridised base pair sequence conformations, it is nevertheless likely that the attached polymer chains constrained the base pairs in the DNA blocks to some extent. This in turn may account for the lower loading of doxorubicin per oligonucleotide sequence in the responsive polymer–DNA conjugates compared to the DNA-only systems. Thus, while access to the oligonucleotide components of the conjugates by the added complementary strands was demonstrated to take place (Fig. 6 and Fig. S2, ESI†), the affinities of the original hybridised strands and the displaced strands for doxorubicin may not have been very different. Thus there may have been only a minimal difference in stability of doxorubicin bound to the B–C unit formed by addition of complementary strand oligo 3 to the conjugates compared to the starting A–B–B*–A polymer–DNA conjugates. This would mean that addition of the competing oligo 3 strand to the A–B-toehold overhangs was concurrent with displacement of the B* strand, and at such a rate that doxorubicin, intercalated initially into the double strand, did not leave the conjugate as one double strand unravelled and a second double strand formed. Support for such a mechanism was obtained in drug release studies (Fig. S16, ESI†) which indicated similar release rates for doxorubicin from the conjugates as compared with doxorubicin and added oligonucleotides.

These data, combined with the analogous studies on DNA origami systems, thus support our assertion that polymer chain length and attachment of the polymer blocks to DNA *via* a reducible linker were less important in delivery to A549 cells than the ability to bind doxorubicin in the DNA strands. However, the data suggests some design rules for future studies, in that polymer–DNA conjugates need to have controlled structure at multiple scales, *i.e.* including base pair twist, as well as base pair sequence and assembly into nanoscale objects, in order to function as effective cytotoxic delivery systems.

Overall, the combined biophysical analyses (AFM, DLS and PAGE) shows that the conjugates were able to alter their conformations and structures through a variety of stimuli (temperature, addition of DNA strands and for conjugate 1, reduction), and drug delivery experiments indicated that the polymer–DNA conjugates were good carriers for doxorubicin. Although other DNA carriers have recently been reported for enhanced delivery of doxorubicin,^{39,43} the *in vitro* cytotoxicity of doxorubicin was not enhanced by addition of a competing strand in our assays.

Conclusions

Two new polymer–DNA conjugate species were prepared by ATRP-‘grafting-from’ methodologies. Three different and experimentally orthogonal response mechanisms were encoded in the polymer structures and the resultant structural changes in the polymers were characterised by AFM and DLS studies across temperature ranges, before and after addition of competing and scrambled DNA sequences, and before and after



addition of a reducing agent. These data provide useful information for the design of drug and gene delivery vehicles, cell entry/trafficking systems, and provide insight for enhancing polymer-based therapeutics. Our studies focused on extracellular responses of the conjugates to complementary DNA strands, but for intracellular release an uncharged morpholino sequence could be used in place of the charged DNA. Similarly, for sensing and diagnostic applications, linking oligonucleotide strands between the polymers could be complementary to a miRNA sequence indicative of disease. However, a key parameter for the use of these systems in any practical application is the ability to define precisely the molecular level structure, such that a binding/hybridisation/strand breaking stimulus is able to cause sufficient changes in architecture to effect sensing and/or release.

This work was supported by the Engineering and Physical Sciences Research Council (Grant EP/H005625/1) and by a scholarship to GY from Marmara University. We also thank Christine Grainger-Boulty for technical help and Dr Francisco Fernandez-Trillo for helpful discussions.

Notes and references

- B. Chakraborty, R. J. Sha and N. C. Seeman, *Proc. Natl. Acad. Sci. U. S. A.*, 2008, **105**, 17245–17249.
- C. X. Lin, S. Rinker, X. Wang, Y. Liu, N. C. Seeman and H. Yan, *Proc. Natl. Acad. Sci. U. S. A.*, 2008, **105**, 17626–17631.
- N. Wu, X. Zhou, D. M. Czajkowsky, M. Ye, D. Zeng, Y. Fu, C. Fan, J. Hu and B. Li, *Nanoscale*, 2011, **3**, 2481–2484.
- K. Numajiri, M. Kimura, A. Kuzuya and M. Komiyama, *Chem. Commun.*, 2010, **46**, 5127–5129.
- M. Gao, K. Gawel and B. T. Stokke, *Soft Matter*, 2011, **7**, 1741–1746.
- R. P. Goodman, M. Heilemann, S. Doose, C. M. Erben, A. N. Kapanidis and A. J. Turberfield, *Nat. Nanotechnol.*, 2008, **3**, 93–96.
- M. L. McKee, P. J. Milnes, J. Bath, E. Stulz, R. K. O'Reilly and A. J. Turberfield, *J. Am. Chem. Soc.*, 2012, **134**, 1446–1449.
- P. Yin, H. M. T. Choi, C. R. Calvert and N. A. Pierce, *Nature*, 2008, **451**, 318.
- M. J. Campolongo, J. S. Kahn, W. Cheng, D. Yang, T. Gupton-Campolongo and D. Luo, *J. Mater. Chem.*, 2011, **21**, 6113–6121.
- S. Chatterjee, J. B. Lee, N. V. Valappil, D. Luo and V. M. Menon, *Nanoscale*, 2012, **4**, 1568–1571.
- D. E. Owens and N. A. Peppas, *Int. J. Pharm.*, 2006, **307**, 93–102.
- G. Pasparakis and M. Vamvakaki, *Polym. Chem.*, 2011, **2**, 1234–1248.
- J. Buller, A. Laschewsky, J.-F. Lutz and E. Wischerhoff, *Polym. Chem.*, 2011, **2**, 1486–1489.
- M. Soliman, R. Nasanit, S. R. Abulatefeh, S. Allen, M. C. Davies, S. S. Briggs, L. W. Seymour, J. A. Preece, A. M. Grabowska, S. A. Watson and C. Alexander, *Mol. Pharmaceutics*, 2012, **9**, 1–13.
- F. S. Du, Y. Wang, R. Zhang and Z. C. Li, *Soft Matter*, 2010, **6**, 835–848.
- G. Gao, H. Heo, J. Lee and D. Lee, *J. Mater. Chem.*, 2010, **20**, 5454–5461.
- D. S. W. Benoit, S. M. Henry, A. D. Shubin, A. S. Hoffman and P. S. Stayton, *Mol. Pharmaceutics*, 2010, **7**, 442–455.
- J. F. Lutz, O. Akdemir and A. Hoth, *J. Am. Chem. Soc.*, 2006, **128**, 13046–13047.
- J. F. Lutz and A. Hoth, *Macromolecules*, 2006, **39**, 893–896.
- J. P. Magnusson, A. Khan, G. Pasparakis, A. O. Saeed, W. Wang and C. Alexander, *J. Am. Chem. Soc.*, 2008, **130**, 10852–10853.
- N. Feebler, N. Badi, K. Schade, S. Pfeifer and J. F. Lutz, *Macromolecules*, 2009, **42**, 33–36.
- T. Traitel, R. Goldbart and J. Kost, *J. Biomater. Sci., Polym. Ed.*, 2008, **19**, 755–767.
- E. Wagner, *Expert Opin. Biol. Ther.*, 2007, **7**, 587–593.
- M. Nakayama and T. Okano, *J. Drug Delivery Sci. Technol.*, 2006, **16**, 35–44.
- Y. T. Li, Y. Q. Tang, R. Narain, A. L. Lewis and S. P. Armes, *Langmuir*, 2005, **21**, 9946–9954.
- M. S. Ayaz, M. Kwak, F. E. Alemdaroglu, J. Wang, R. Berger and A. Herrmann, *Chem. Commun.*, 2011, **47**, 2243–2245.
- F. E. Alemdaroglu, N. C. Alemdaroglu, P. Langguth and A. Herrmann, *Adv. Mater.*, 2008, **20**, 899–902.
- F. E. Alemdaroglu, M. Safak, J. Wang, R. Berger and A. Herrmann, *Chem. Commun.*, 2007, 1358–1359.
- F. E. Alemdaroglu and A. Herrmann, *Org. Biomol. Chem.*, 2007, **5**, 1311–1320.
- G. Li, G. Fei, H. Xia, J. Han and Y. Zhao, *J. Mater. Chem.*, 2012, **22**, 7692–7696.
- X. Chen, H. W. Liang, J. F. Zhang, K. Zen and C. Y. Zhang, *Trends Cell Biol.*, 2012, **22**, 125–132.
- K. Zen and C. Y. Zhang, *Med. Res. Rev.*, 2012, **32**, 326–348.
- Z. Tyeklar, R. R. Jacobson, N. Wei, N. N. Murthy, J. Zubietta and K. D. Karlin, *J. Am. Chem. Soc.*, 1993, **115**, 2677–2689.
- J. P. Magnusson, S. Bersani, S. Salmaso, C. Alexander and P. Caliceti, *Bioconjugate Chem.*, 2010, **21**, 671–678.
- M. Kwak and A. Herrmann, *Angew. Chem., Int. Ed.*, 2010, **49**, 8574–8587.
- K. Ding, F. E. Alemdaroglu, M. Boersch, R. Berger and A. Herrmann, *Angew. Chem., Int. Ed.*, 2007, **46**, 1172–1175.
- S. Nagahara and T. Matsuda, *Polym. Gels Networks*, 1996, **4**, 111–127.
- M. Endo, Y. Yang and H. Sugiyama, *Biomater. Sci.*, 2013, **1**, 347–360.
- Q. Jiang, C. Song, J. Nangreave, X. Liu, L. Lin, D. Qiu, Z.-G. Wang, G. Zou, X. Liang, H. Yan and B. Ding, *J. Am. Chem. Soc.*, 2012, **134**, 13396–13403.
- A. Kuzuya and M. Komiyama, *Nanoscale*, 2010, **2**, 309–321.
- Y. Ke, G. Bellot, N. V. Voigt, E. Fradkov and W. M. Shih, *Chem. Sci.*, 2012, **3**, 2587–2597.
- S. M. Douglas, H. Dietz, T. Liedl, B. Hogberg, F. Graf and W. M. Shih, *Nature*, 2009, **459**, 414–418.
- Y.-X. Zhao, A. Shaw, X. Zeng, E. Benson, A. M. Nystrom and B. Hogberg, *ACS Nano*, 2012, **6**, 8684–8691.
- G. E. Kellogg, J. N. Scarsdale and F. A. Fornari, *Nucleic Acids Res.*, 1998, **26**, 4721–4732.

