

Bukti Korespondensi Publikasi Artikel
Sensing and Bio-Sensing Research

Artikel disubmit pada tanggal **09 Maret 2021** dengan judul: **DESIGNING THE MEASUREMENT OF NITROGEN SOIL CONDITIONS USING NAÏVE BAYES AND GEOGRAPHIC INFORMATION SYSTEM (GIS)**.

Namun, pada tanggal 15 Maret 2021 artikel kami mendapat penolakan (Riject) dari reviewer dikarenakan artikel kami perlu dilakukan improvisasi pada bagian gambar, konten pembahasan, dan judul. Berdasarkan saran tersebut, selanjutnya kami melakukan perombakan dan submit ulang artikel yang telah kami perbaiki pada tanggal **16 April 2021** dengan judul: **GIS-BASED AND NAÏVE BAYES FOR NITROGEN SOIL MAPPING IN LENDAH, INDONESIA**.

Berikut rangkuman korespondensi dari artikel kami:

Tanggal	Korespondensi		Hal
	Author	Editor Jurnal	
10 Maret 2021	Artikel disubmit melalui editor manager jurnal dengan kode SBSR-D-21-00024 dan judul: DESIGNING THE MEASUREMENT OF NITROGEN SOIL CONDITIONS USING NAÏVE BAYES AND GEOGRAPHIC INFORMATION SYSTEM (GIS) (lampiran 1. Bukti email dan foto editorial manager jurnal)		3
15 Maret 2021		Email keputusan editor bahwa artikel kami telah ditolak (rejected) pada tanggal 15 Maret 2021 (Lampiran 2. Bukti email keputusan editor)	4
16 April 2021	Artikel disubmit ulang setelah dilakukan improvisasi dengan judul GIS-BASED AND NAÏVE BAYES FOR NITROGEN SOIL MAPPING IN LENDAH, INDONESIA. (Lampiran 3. Bukti email konfirmasi dari editor dan lampiran artikel)		4
17 April 2021		Notifikasi dari editor tentang cara melakukan tracking artikel yang telah di submit ke jurnal SBSR serta editor memberikan kode artikel: SBSR-D-21-00036	33

		(Lampiran 4. Email dari editor tentang tracking artikel dan kode artikel)	
17 Mei 2021		Email keputusan editor tentang penyampaian saran/rekomendasi dari reviewer beserta lampiran artikel hasil review. (Lampiran 5. Bukti email (decision), dan list comment dari reviewer).	33
9 Juni 2021		Email dari editor memberikan notifikasi tentang deadline revisi lampiran 6. Bukti email (revision reminder)	34
9 Juni 2021	Pengiriman artikel melalui editor manager jurnal. Artikel sudah diperbaiki sesuai dengan saran reviewer. (Lampiran 7. Bukti email konfirmasi pengiriman perbaikan artikel dan respon comment dari penulis).		35
14 Juni 2021		Email keputusan dari editor bahwa artikel sudah diterima (Lampiran 8. Bukti email)	36
17 Juni 2021		Email editor tentang penyampaian ucapan "Congratulation" (Lampiran 9. Bukti email)	36
18 Juni 2021		Email konfirmasi pengiriman artikel ke galley/production (Lampiran 10. Bukti email)	37
21 Juni 2021		Email pemberitahuan tentang publishing agreement (Lampiran 11. Bukti email)	37
23 Juni 2021	Komunikasi tentang pengecekan galley proof pada artikel sebelum dilakukan finishing publikasi (Lampiran 12. Bukti email)		38
25 Juni 2021	Komunikasi tentang teknik pembayaran biaya publikasi (Lampiran 13. Bukti email)		38
	Artikel terpublikasi online pada jurnal Sensing and Bio-Sensing Research Vol 33 pada tanggal 9 Juli 2021 (Lampiran 14, Bukti email artikel terpublikasi online)		39

Lampiran 1

A.

PDF for submission to Sensing and Bio-Sensing Research requires approval Eksternal
Kotak Masuk

Sensing and Bio-Sensing Research <em@editorialmanager.com>
Sel, 9 Mar 2021 21.58
kepada saya

Terjemahkan pesan
Nonaktifkan untuk: Inggris
This is an automated message.

DESIGNING THE MEASUREMENT OF NITROGEN SOIL CONDITIONS USING NAÏVE BAYES AND GEOGRAPHIC INFORMATION SYSTEM (GIS)

Dear Mr Yudhana,

The PDF for your above referenced manuscript has been built and requires your approval. If you have already approved the PDF of your submission, this e-mail can be ignored.

Please review the PDF carefully, before approving it, to confirm it appears as you expect and is free of any errors. Once approved, no further changes can be made.

B.

SENSING AND BIO-SENSING RESEARCH								
HOME • LOGOUT • HELP • REGISTER • UPDATE MY INFORMATION • JOURNAL OVERVIEW			Role: Author			Username: Anton Yudhana		
MAIN MENU • CONTACT US • SUBMIT A MANUSCRIPT • INSTRUCTIONS FOR AUTHORS • POLICIES								
← Submissions with an Editorial Office Decision for Author								
Page: 1 of 1 (3 total completed submissions)								
Results per page 10								
Action	Manuscript Number	Title	Initial Date Submitted	Status Date	Current Status	Date Final Disposition Set	Final Disposition	
Action Links	SBSR-D-21-00024	DESIGNING THE MEASUREMENT OF NITROGEN SOIL CONDITIONS USING NAÏVE BAYES AND GEOGRAPHIC INFORMATION SYSTEM (GIS)	Mar 09, 2021	Mar 15, 2021	Completed - Reject	Mar 15, 2021	Reject	

Lampiran 2

View Letter - Google Chrome
editorialmanager.com/sbsr/ViewLetter.aspx?id=24603&lsid={A88DADD0-D5BF-4158-AF12-EC3B9A117033}

Date: Mar 15, 2021
To: "Anton Yudhana" eyudhana@ee.uad.ac.id
From: "Sensing and Bio-Sensing Research" SBSR@elsevier.com
Subject: Decision on submission to Sensing and Bio-Sensing Research

Manuscript Number: SBSR-D-21-00024

DESIGNING THE MEASUREMENT OF NITROGEN SOIL CONDITIONS USING NAÏVE BAYES AND GEOGRAPHIC INFORMATION SYSTEM (GIS)

Dear Mr Yudhana,

Thank you for submitting your manuscript to Sensing and Bio-Sensing Research.

I regret to inform you that the reviewers recommend against publishing your manuscript, and [I must therefore reject it](#). My comments, and any reviewer comments, are below.

For alternative journals that may be more suitable for your manuscript, please refer to our Journal Finder (<http://journalfinder.elsevier.com>).

We appreciate you submitting your manuscript to Sensing and Bio-Sensing Research and thank you for giving us the opportunity to consider your work.

Kind regards,
Richard Luxton
Editor-in-Chief

More information and support
You will find information relevant for you as an author on Elsevier's Author Hub:
<https://www.elsevier.com/authors>

FAQ: How can I reset a forgotten password?
https://service.elsevier.com/app/answers/detail/a_id/28452/supporthub/publishing/kw/editoria

For further assistance, please visit our customer service site:
<https://service.elsevier.com/app/home/supporthub/publishing/>. Here you can search for solutions on a range of topics, find answers to frequently asked questions, and learn more about Editorial Manager via interactive tutorials. You can also talk 24/7 to our customer support team by phone and 24/7 by live chat and email.

Lampiran 3

Confirming submission to Sensing and Bio-Sensing Research
Eksternal
Kotak Masuk

Sensing and Bio-Sensing Research <em@editorialmanager.com>
Sab, 17 Apr 2021 10.34
kepada saya

Terjemahkan pesan
Nonaktifkan untuk: Inggris
This is an automated message.

GIS-BASED AND NAÏVE BAYES FOR NITROGEN SOIL MAPPING IN LENDA, INDONESIA

Dear Mr Yudhana,

We have received the above referenced manuscript you submitted to Sensing and Bio-Sensing Research.

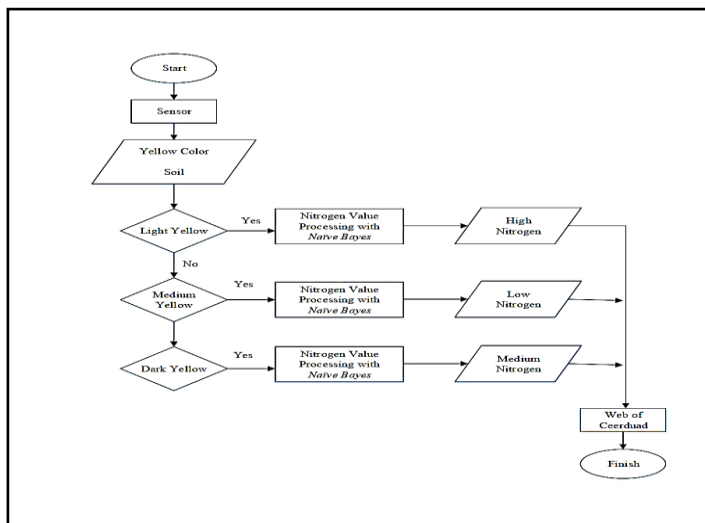
To track the status of your manuscript, please log in as an author at <https://www.editorialmanager.com/sbsr/>, and navigate to the "Submissions Being Processed" folder.

Thank you for submitting your work to this journal.

Manuskrip:

Highlights:

- This work presents to measure soil nitrogen by using the TCS3200 sensor with the Naïve Bayes algorithm.
- Geographical Information Systems (GIS-based) was to mapping area
- TCS32000 sensor was successfully mapping the low, medium, and high level of nitrogen.
- The accuracy of the sensor is 87.5%



GIS-BASED AND NAÏVE BAYES FOR NITROGEN SOIL MAPPING IN LENDAH, INDONESIA

Anton Yudhana^{1*}, Dedy Sulisty², Ilham Mufandi³

^{1,2}Department of Electrical Engineering, Universitas Ahmad Dahlan Yogyakarta Kampus IV, Jl. Ringroad Selatan, Kragilan, Tamanan, Banguntapan, Bantul, Special Region of Yogyakarta 55191

³Department of Chemical Engineering, Indian Institute of Technology Delhi, New Delhi 110016, India.

*Corresponding authors: eyudhana@ee.uad.ac.id

Abstract:

Rice or *Oryza sativa* L. is the staple food of Indonesian society. In recent years, rice has become a national topic of conversation because it is one of the imported commodities with large quantities and costs due to low production rates and high rice demand. Good soil is main element in the paddy field to produce rice's good quality. Soil nitrogen (N) content is an important nutrient for the growth of rice plants. This research was

performed to measure soil nitrogen content with the use of technology through a prototype checking the N content of paddy soil using the TCS3200 sensor with the naïve Bayes algorithm. The Wemos D1 Mini microcontroller of TCS3200 sensor readings data are sent to the web ceerduad.com. Geographical information systems (GIS) was developed to mapping area and to obtain training data for the naïve Bayes algorithm which the researcher took 20 soil samples in Lendah sub-district. From the experiment results, a prototype of lowland soil nitrogen content using the TCS3200 sensor can measure soil nitrogen levels with an accuracy of 87.5% and sending the sensor data to the web ceerduad.com for backup. TCS3200 sensor also was successfully mapping the low, medium, and high levels of nitrogen

Keywords: *Rice, Lowland nitrogen, Naïve Bayes, Geographical Information Systems (GIS)*

1 **1. Introduction**

2 Rice or *Oryza sativa* L. is growing abundant in Indonesia as the society's staple food. However,
3 farmers need to maintain rice plants to get the rice's good quality [1]. In the last few years, rice has
4 become a national topic of conversation because it was one of the imported commodities with a large
5 amount and cost in which was caused by the low production rates and the high demand for rice.
6 According to the publication of the Central Statistics Agency (BPS), national rice production in 2017
7 reached 47.30 million tons [2]. Generally, rice production depends on the season to produce rice's good
8 quality in a tropical country like Indonesia [3]. There is the different of nitrogen soil level between rainy
9 season and dry season [4]. Rice plants grow faster and huge good production In rainy season. [5]. Hence,
10 measurement of soil level is important to improve the production, management and planning agriculture
11 activity [6].

12 The influence of the changing seasons during the rice planting can reduce rice production [7], [5],
13 [8]. Therefore, farmers should develop agriculture method and technology to complete the rice
14 consumption by increasing rice cultivation [9]. As a tropical country, Indonesia has unpredictable
15 weather that can affect agricultural production, especially rice production, caused by annual rainfall
16 [10], El Nino [11] and the temperature rise as the climate change [12]. In other hand, soil fertility is also
17 influential on the rice production [13] and needed more attention to identify the plant growth [14], [15].
18 The balancing of soil nutrients are required to identify the rice's good quality [16]. Soil is one of the
19 main element in organisms living in which there are nutrients and water as food sources for plants [16–
20 17].

21 The soil content consist of various mineral, nitrogen, and other organic compound[18]. The nitrogen
22 (N) content in the soil is an essential nutrient for rice plants' growth. Nitrogen (N) cycle from the soil
23 cause reduce soil fertility, plant growth [19] and environmental pollution [20], [21] such as ammonia
24 volatilization, nitrate leaching, and nitrous oxide emission [22] .

25 Hence, the controlling of N content in the soil must be considered for knowing the N content in the
26 soil [23]. Three things cause the loss of nitrogen from the soil: The nitrogen in the lowland soils affects
27 rice plants' vegetative growth [24–25]. The rainwater movement will cause soil activity[26–27], In order
28 to, the soil quality is not monitored and detrimental rice farmers loss [28–30]. In increasing the farmer's
29 welfare in their income, it is necessary to make the fertilizers efficient to save energy sources and
30 increase rice production [31–33]. In this modern era, the rice farmers are still using the estimating
31 method for knowing the soil quality and there is no tool used to determine the paddy land's quality [9],
32 [34]. In addition, mapping the paddy fields to identify nitrogen (N) content in the soil was required to
33 the rice production [35–36].

34 There are many methods to conduct the mapping area in the agriculture field such as monitoring soil
35 content by using remote sensing (RS) dan GIS has investigated by O. A. Adeyeye, 2018 [37] to measure
36 the water exploration in 3 zones: low potential zone, medium potential zone, and high potential zone.
37 The developing of mapping tools has applied in Mekong Region, Vietnam by A. Aekakkarunroj *et*

1 *al*, 2019 thought ArcGIS desktop 10.5 and digital model SRTM 30. ArcGIS software also can be applied
2 for groundwater quality [39–40] to identify six soil textural classes (organic, coarse loamy, silt [40],
3 clay, fine sand, and coarse sand) [41], soil erosion [42], and flood prediction [44–46].

4 In addition, GIS is an important tools to predict and mapping the spatial distribution of soil on the
5 landscape [46]. The application of GIS can share the information regarding soil physicochemical
6 parameter in precision farming to examine the soil properties such as nitrogen [45–48], sulfur [48],
7 fluoride [50–51], potassium [51], and phosphorous [52]. ArcGIS can display the manipulate
8 georeferenced information[53], store assemble [54], create georeferenced data, and generate multiple
9 missing spatial data [56–57]. The procedure of GIS package is firstly choice the active zone [57] and
10 the layers in the active zone as subdivided according the characteristics [58]. The study area was
11 calculated by using spatial distribution maps and interpolating the data in each location [59], [60].

12 In recently, The experiment in the mapping area of agriculture have used Machine Learning (ML)
13 with high accuracy such as: Naïve Bayes [62–63], Support Vector Machine (SVM)[64–65], K Nearest
14 Neighbors (KNN) [66–67], Bayesian Networks (BNs) [68–69], and Random forest (RF) [60–70].
15 Application of Machine Learning is to predict the phenomena in future. The data classification in
16 machine learning is big important to get the high accuracy. In this experiment. Naïve Bayes was applied
17 to predict the nitrogen soil level because Naïve Bayes have a high accuracy. In previous research, D.
18 Seka, 2019 [70] have conducted the Naïve Bayes model to predict the genotype of maize with accuracy
19 of 87%. Hubert, 2021 [71] have investigated the experiment about the clarification of promotion images
20 using Naïve Bayes with accuracy of 94%

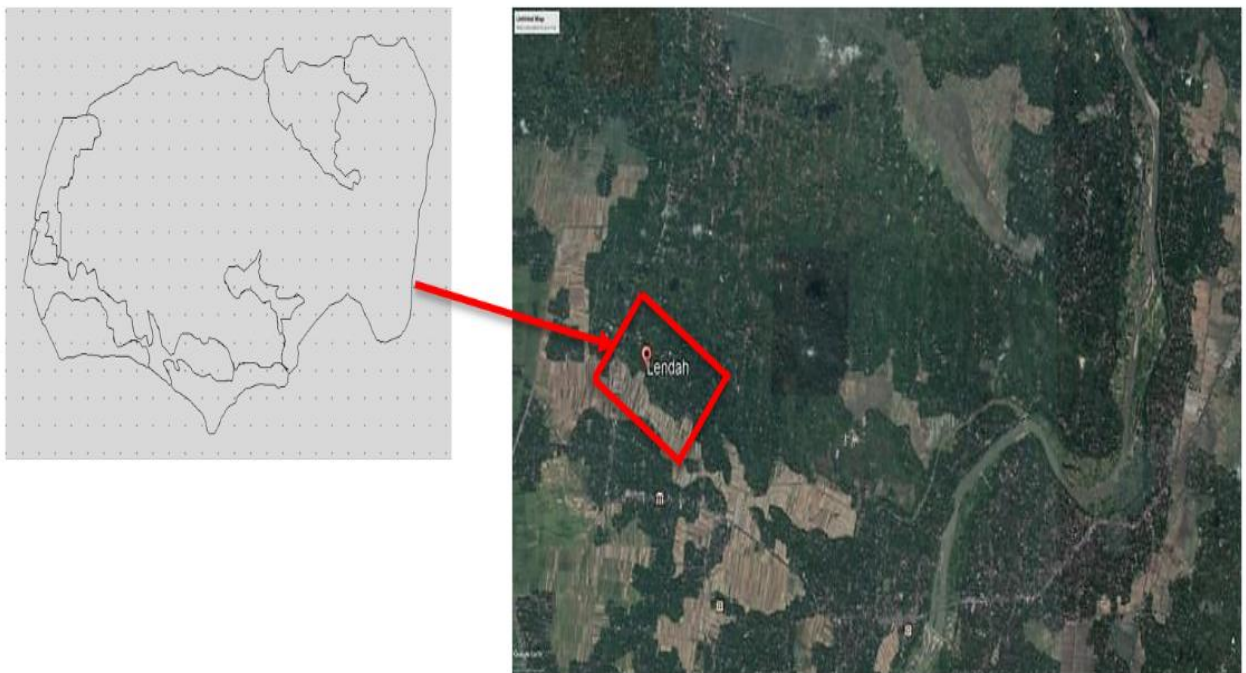
21 From the explanation above, this experiment was to design the technology utilization solution
22 through a prototype to identify the Nitrogen (N) content in the soil. In addition, mapping the N content
23 was carried out by using GIS. GIS-based mapping can be used as data for the farmers and the
24 government in evaluating the possibility of soil nitrogen content in the rice fields. The Geographic
25 Information System (GIS) in mapping agricultural land was created to help develop the farmers'
26 agricultural productivity and welfare.

28 **2. Materials and Methods**

29 The design of the device, software design and arc *Geographic Information System* (GIS) are described
30 below.

31 **2.1 Study Area**

1 This experiment was conducted in Lendah sub-district, Kulonprogo, Indoneisa between longitudes 7°
2 38'42"-7° 59'3" and lantitudes110° 1'37"- 110°16'26". Lendah sub-district was covered in 6 villages,
3 namely Bumirejo Village, Wahuharjo Village, Ngetakrejo Village, Sidorejo Village and Gulurejo
4 Village and including 62 hamlets, 115 RW, and 246 RT.
5 The total of population in lendah is 13,064 head of families. The rice field in Lendah is about 671.87
6 Ha that used for agriculture such as the cultivation of food crops grown in the rainy season and
7 horticultural crops planted in the dry season (<https://lendirah.kulonprogokab.go.id/>). The general problem
8 in this area is the sociaty unknown the nitrogen soil level and unknow the information regarding the
9 alternative technology to improve the rice production in real-time. It is recognized that information
10 technology and supporting devices have a great effect on increasing agricultural production. The map
11 of Lendah sub-district was made based on the Lendah map on google earth. The purpose of finding a
12 map of the Lendah district location with google earth is to get a map image based on the current situation



13 or in real terms. The researcher took 20 soil samples in Lendah sub-district. From the results of these
14 searches, Image map of the Lendah location can be describe in **Fig. 1**.

15 **Fig. 1.** Lendah Sub-district in the Google Earth

16
17 A map of Lendah sub-district was created by using shapefile. **Fig. 2** show the catalog to save
18 the shapefile created. It has been created, click right, new and continue to shapefile, select the polygon
19 shape to create a map. Furthermore, the shapefile was appearance on the layers.

20
21

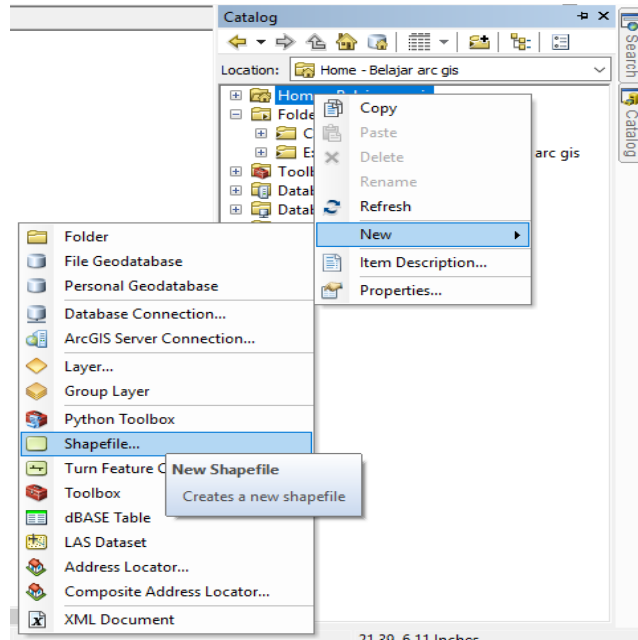


Fig. 2. Shapefile creation

1
2

2.2 Design of The Device

Fig 3 shows the system block diagram. Hardware design to detect the N content in paddy soil was done by detecting RGB with the TCS3200 sensor which was installed by input the microcontroller. This

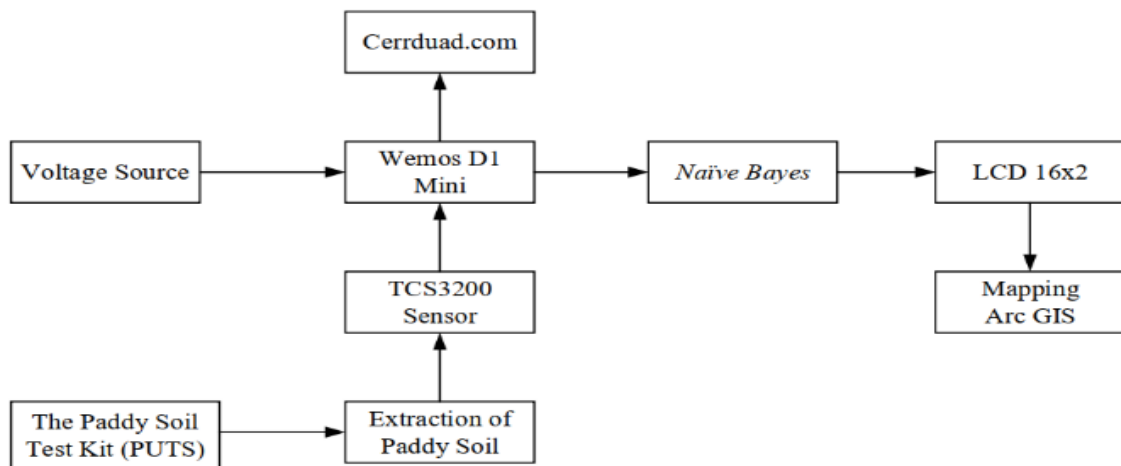
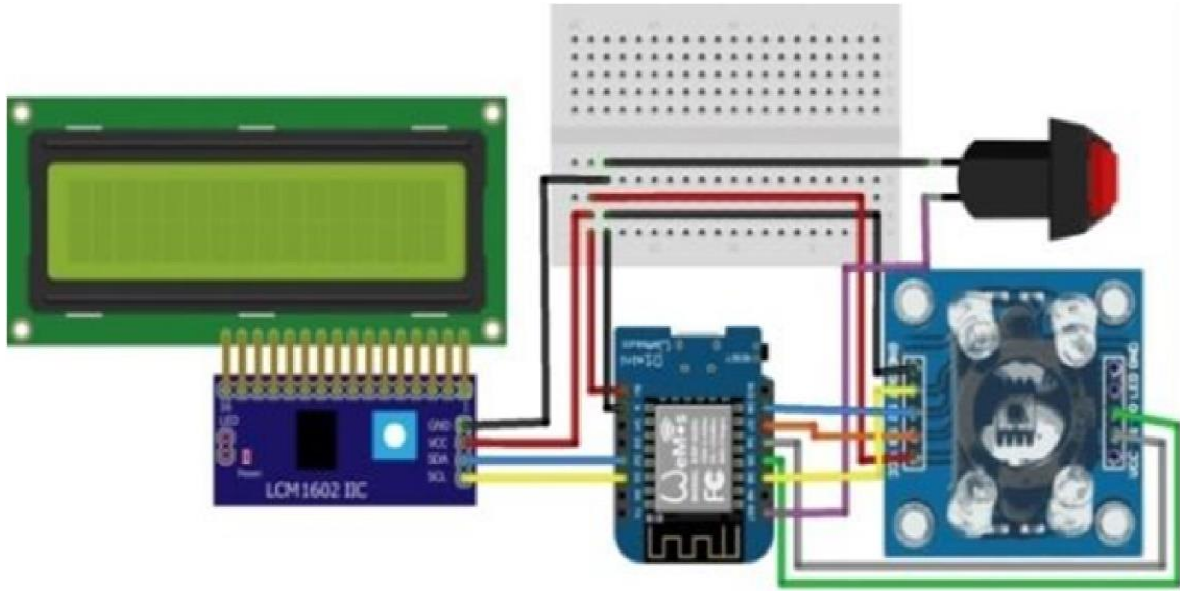


Fig. 3. System Block Diagram

research was conducted on a Wemos D1 Mini microcontroller because it has a compatible board at an affordable price [12].

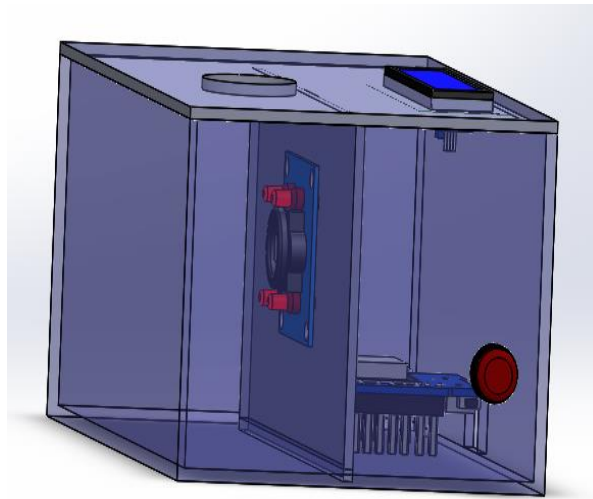
Based on the system block diagram above, the sensor can read the N content's detection with the result displayed in an RGB image then the sensor readings are processed by the Wemos D1 Mini displayed on the LCD and sent to the web ceerduad.com. From the LCD, it can be shown the mapping by using Arc GIS. The Arc GIS carry out the mapping. The block diagram in Fig. 3 can be implemented in Fig

13 4



1
2

a) Diagram of the final assembly in electrical system



3
4

b) 3D Design of prototype

Fig 4. Measurement system a) final assembly of electrical system, and b) 3D design of prototype

5
6
7
8
9
10
11

Fig. 4. Shows the design of a paddy field nitrogen meter. From design of the tools, the TCS3200 sensor readings color must be in a dark situation or light-proof. If there is a light inference, the sensor readings are less accurate.

12 **2.2. Software Design**

Flow diagram of a measuring device for lowland soil nitrogen can be illustrated in **Fig. 5**. The sensor in this research was used the TCS3200. If there is an input of color from the soil extraction, the extracted paddy soil is read by the TCS3200 sensor then classified by naïve Bayes. Finally, the results were displayed on the LCD screen and the data is sent to the web site ceerduad.com.

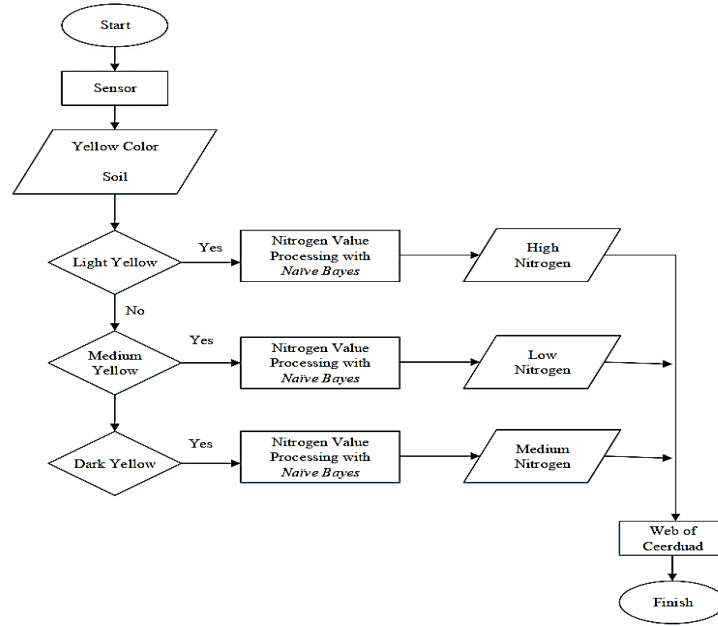


Fig. 5. Flowchart of the code algorithm for nitrogen soil mapping

2.2.1 Naïve Bayes Classifier

Naïve Bayes Classifier is a classification method that came from the Bayes theorem to maximize the posterior possibility and also can be used to increasing the classification probability in variable and condition factors [72], [73]. Thomas Bayes is an English scientist claiming the classification method using the probability and statistic method. The Bayes theorem known by the future predicts odds based on previous experiences [74], [75].

The advantages of using this Naïve Bayes are that this method requires a little training data in determining the range of parameters used in the classification process because an independent variable took only the variant of a variable in a class needed to determine the classification without the whole of the covariance matrix[76]. The Naïve Bayes classifier can be performed in equation [77].

$$Y_{NB} = \operatorname{argmax} P(y_i) \prod_{i=1}^{17} P\left(\frac{x_i}{y_i}\right) \quad (1)$$

$$P\left(\frac{x_i}{y_i}\right) = \frac{1}{\sqrt{2\pi\alpha}} e^{-\frac{(x_i-\eta)^2}{2\alpha^2}} \quad (2)$$

Where $P(y_i)$ represent the prior probability of y_i , $P(x_i/y_i)$ is the conditional probability, α is the standard deviation of x_i and η is the mean. Naïve Bayes also has high accuracy and speed when using extensive data in the database to get small errors [78], [79].

$$P(x) = \frac{P(c)P(c)}{P(x)} \quad (3)$$

1 Where, $P(c)$ is the probability of categorized test data on the overall test data, $P(x|c)$ represents lass
2 Probability on all test data, $P(x)$ is predictors prior probability, and $P(c | x)$ is posterior probability.

3

4 **2.3. Arc GIS**

5 *Geographic Information System (GIS)* is a system that combines the text data (attributes) with the
6 graphical data (spatial) objects that are linked geographically [80], [81]. Arc GIS is a software
7 developed by ESRI (Environment Science & Research Institute), which combines various GIS software
8 functions. Types of software on the desktop Arc GIS include [82]:

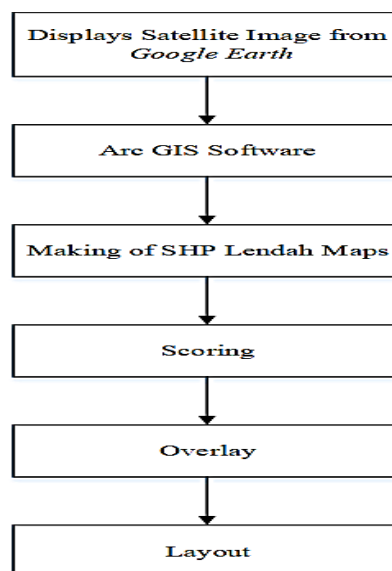
- 9 • Arc View is used for fundamental spatial map analysis, can generate spatial data, and layered
10 map design.
- 11 • Arc Map is used for map visualization, spatial data design, map editing, and map design.
- 12 • Arc Editor is used to manipulate shapefile data.
- 13 • Arc Info is used to manipulate data and data analysis.
- 14 • Arc Catalog is used to store GIS data and manage spatial data.

15 Geographic Information System is also devoted to data management with spatial information [83]. In
16 addition, GIS can also link the data, organize the data, and perform data analysis to decide on the
17 regional issues. In general, GIS is the earth's geographic information system used to provide 2D digital
18 information from its analysis [84].

19

20 **2.3.1. Mapping Design with GIS**

21 The scheme planning for the rice field is important to achieve the expected mapping results. Therefore,
22 the mapping steps can be seen in **Fig. 6** below.



23

Fig. 6. Mapping Design Scheme

24

1 The schematic in **Fig 6** begins with taking a map of the Lendah sub-district from Google Earth and then
 2 inserting it into the Arc GIS software. From the Lendah sub-district map image, a shapefile combined
 3 into one structure from the Lendah sub-district and a score is made for each polygon was created [85],
 4 [86]. By the union map technique, it is combined and was produce the desired mapping. The display
 5 satellite image from google earth is to get maps image based on the current situation or in real terms.
 6 Arc GIS software is to mapping area and to obtain training data with 20 samples in Lendah, Indonesia.
 7 Making of SHP (Shapefile) is a step to save the maps image. Scoring is to calculated the soil nitrogen
 8 level based on the color parameter and the paddy soil nitrogen content. Overlay is applied to combine
 9 a shapefile into one structure. Layout is to described the mapping result of the paddy soil nitrogen

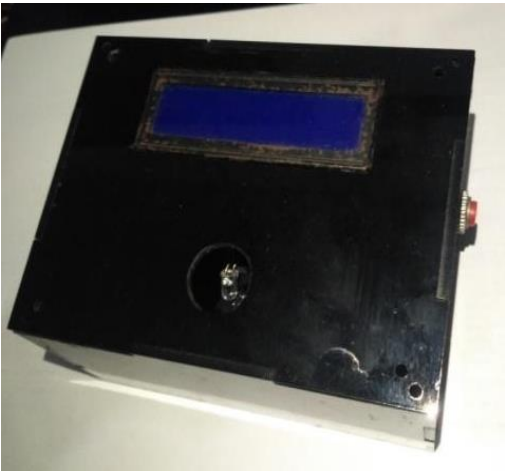
10

11 **3. Findings and Discussions**

12 **3.1 Prototype of Paddy Soil Nitrogen Level Meter**

13 The prototype of the paddy soil nitrogen meter can be implemented in **Fig. 7**. The device must be tight
 14 and light-proof so that the TCS3200 sensor readings are not disturbed.

15



16

17 **Fig. 7.** A Prototype of the Paddy Soil Nitrogen Meter

18

19 **3.2 Paddy Soil Testing by TCS3200 Sensor**

20 The paddy soil testing was tested by using TCS sensor to make the soil classification. The experiment
 21 result shows in table 1 which the device status as the result from prototype and the Paddy Soil Test Kit
 22 (PUTS) as the standard data from government of Indonesia. The soil classification from prototype
 23 (Device status) was used to analysis of Naïve Bayes in this experiment. The TCS3200 sensor was
 24 carried out two readings for each oil sample.

25 **Table 1. The TCS3200 Sensor Test Results and the Paddy Soil Test Kit (PUTS)**

Testing	R	G	B	Device Status	PUTS Status	Soil Code
---------	---	---	---	---------------	-------------	-----------

1	158	142	116	Low	Medium	1
2	167	142	116	Medium	Medium	1
3	125	111	96	Low	Medium	2
4	136	121	104	Medium	Medium	2
5	168	140	110	High	High	3
6	163	142	112	High	High	3
7	125	111	96	Medium	Medium	4
8	136	121	104	Medium	Medium	4
9	157	143	116	Low	Low	5
10	148	140	115	Low	Low	5
11	145	133	112	Low	Low	6
12	147	133	113	Low	Low	6
13	127	116	96	Medium	Medium	7
14	140	123	103	Medium	Medium	7
15	148	136	112	Low	Low	8
16	142	136	110	Low	Low	8
17	158	143	112	Low	Low	9
18	166	149	119	Low	Low	9
19	118	113	96	Low	Low	10
20	127	121	103	Low	Low	10
21	132	126	98	Low	Low	11
22	145	131	106	Low	Low	11
23	138	121	101	High	High	12
24	145	128	108	High	High	12
25	137	123	101	Low	Low	13
26	144	128	104	Low	Low	13
27	148	145	118	Low	Low	14
28	158	148	118	Medium	Low	14
29	132	126	101	Low	Low	15
30	142	131	108	Low	Low	15
31	130	121	98	Medium	Medium	16
32	140	126	103	Medium	Medium	16
33	135	126	98	Low	Low	17
34	140	131	106	Low	Low	17
35	165	146	119	Medium	Medium	18
36	169	146	119	High	Medium	18
37	139	131	112	Low	Low	19
38	146	134	116	Low	Low	19
39	125	118	98	Low	Medium	20
40	137	124	103	Medium	Medium	20

1

2

According to **Table 1**. It Show the comparison of the testing TCS3200 sensor results and the testing results of the Paddy Field Test Kit (PUTS) that the results of TCS3200 sensor readings are not similar with the results of PUTS tests. So that the accuracy of the testing can be determined as follows:

3

4

5

$$\text{Accuracy} = \frac{\text{Testing total} - \text{error}}{\text{The number of testing}} \times 100\% \quad (4)$$

6

$$= \frac{40-5}{40} \times 100\%$$

7

$$= 87.5\%$$

1
2
3
4
5
6
7
8

According to the equation 4, the accuracy level is 87.5%. This result was compared with previous research in the field of GIS mapping with the difference of application and methods. The comparison detail can be described in **Table 2**. In addition, the accuracy in this study is higher than the previous research. the experimental result in this study is better than the previous research because we made a prototype to check the N content of paddy soil using the TCS3200 sensor and data sent can be show in the website of ceerduad.com in which the design of prototype is simple and easy use

Table 2. The comparison of accuracy between this study and previous study

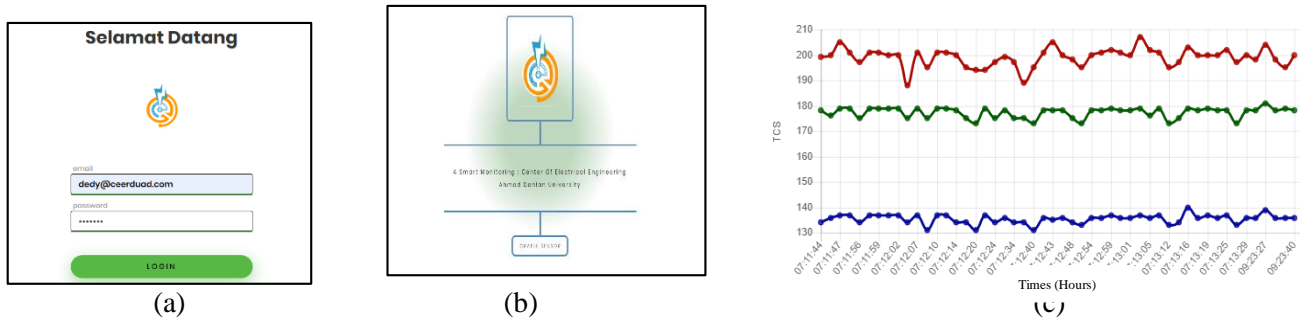
Studies	Methods	Application	Accuracy	Ref
Dedeoğlu and Dengiz, 2019	Hybrid system approach using analytic hierarchy process (AHP) and GIS	Land suitability index	Accuracy of 83% and and accuracy of NDVI (Normalized difference vegetation index) of 78%	[87]
Tehrany, Pradhan, and Jebur 2014	<ul style="list-style-type: none"> • Weigh-of Evidence WoE) model and SIG-SVM (Support vector machine model) • Standalone RBF (Radial basis function) and SVM 	Flood susceptibility mapping	<ul style="list-style-type: none"> • Success rate accuracy of 84.67% and prediction rate of 84.28%. • Success rate accuracy of 86.47% and prediction rate of 81.27% 	[88]
Elkhrachy, 2015	Satellite image and GIS Tools	Flash flood hazard mapping	Overall accuracy of 84.4% and Kappa coefficient of 82.5%	[89]
Akumu et al. 2015	GIS-Fuzzy logic based	Modeling soil texture	Overall accuracy of 79% and Kappa statistics of 70%	[41]
Msabi and Makonyo, 2021	GIS and multi-criteria decision analysis	Flood susceptibility mapping	Accuracy of 87.24%	[90]
Akumu, Baldwin, and Dennis, 2019	GIS based modeling	Soil moisture regime (SMR)	Overall accuracy of 65%	[23]
This study	GIS based	Mapping Nitrogen soil mapping	Accuracy of 87.5%	

9
10
11
12
13

3.3 Data Delivery to the ceerduad.com Web

The results data from the TCS3200 sensor readings was delivered to the ceerduad.com webserver as the database to display the graph reading from TCS sensor in the form: Red, Green, Blue (RGB color). Data delivery to the ceerduad.com can be seen in **Fig 8**.

1



2

3 **Fig 8.** The step of data delivery: (a)The ceerduad.com Web Login Page;(b) The Display of Sensor
 4 Graphic; (c) The Sensor Graph on ceerduad.com Web

5

6 From **Fig 8.** The ceerduad.com web can be access by using email dan password to maintain security for
 7 users of this application. Webserver features by using Indonesai language which aims to make farmers
 8 understand and access this application easily. After login, the process forward in the ceerduad.com can
 9 be seen in **Fig 8c.** Click on Sensor Graph to see the graphical display of the TCS3200 sensor reading.
 10 Graph shows 3 colors including: Red, Green, and Blue (RGB color) that show the soil nitrogen
 11 condition in Lendah District. The data from the sensor was automatically stored and load in excel. The
 12 results of the TCS3200 sensor readings in excel can be shown in **Table 3.**

13

Table 3. The TCS3200 data backed up on the web

No	Red	Green	Blue	Status	Hours	Date
1	191	223	183	Medium	2:13:42	2020-04-21
2	186	216	181	Medium	2:13:44	2020-04-21
3	189	221	183	Medium	2:13:45	2020-04-21
4	191	222	183	Medium	2:13:48	2020-04-21
5	176	223	221	Medium	2:13:49	2020-04-21
6	189	218	181	Medium	2:13:54	2020-04-21
7	189	221	183	Medium	2:13:57	2020-04-21
8	194	226	188	Medium	2:14:00	2020-04-21
9	196	228	201	Medium	2:14:01	2020-04-21
10	136	111	123	Medium	2:14:03	2020-04-21

14

15 From the data in Table 2, it shows in real-time by using the Wemos D1 Mini microcontroller. The
 16 sending data was provided the form of RGB (Red, Green, and Blue) value data by the TCS3200 sensor
 17 readings and the sensor's nitrogen level status.

18

19 3.4 Determine of Naïve Bayes Classifier

20 In this study, Naïve Bayes is used to explain the probability of nitrogen content in the soil based
 21 on 3 categories, namely low, medium, and high. The amount of analysis data is as many as 40
 22 classifications and divided into 22 classes of low, 13 classes of medium, and 5 classes of high. Data

1 classification of soil can be seen in table 1. The nitrogen probabilities (low, medium, and high) are the
 2 probability of the total readings of the TCS3200 sensor and divided by the whole data with the results
 3 are 0.55 of low, 0.325 of medium, and 0.125 of high. The detail calculations are:

- 4 a. Low nitrogen probabilities
 $P(c(\text{low})) = 22/40 = 0.55$
- 6 b. Medium nitrogen probabilities
 $P(c(\text{medium})) = 13/40 = 0.325$
- 8 c. High nitrogen probabilities
 $P(c(\text{high})) = 5/40 = 0.125$

10 Then, the classification result of RGB value was performed in tables 4, 5, and 6.

12 **Table 4. Red Odds**

<i>RED</i>						
Range of value	Low	Medium	High	P (rre)	P (rse)	P (rti)
$\geq 44 \ \&\leq 86$	0	0	0	0/23	0/14	0/3
$\geq 87 \ \&\leq 129$	2	4	0	2/23	4/13	0/3
$\geq 130 \ \&\leq 172$	20	10	4	20/23	10/13	4/4
$\geq 173 \ \&\leq 255$	0	0	0	0/23	0/14	0/3

13
 14 **Table. 4** shows four classifications of opportunities for reading Red with different values of ranges.
 15 Red readings are at low (P(rre)), medium (P(rse)), and high (P(rti)).

17 **Table 5. Green Odds**

<i>GREEN</i>						
Range of value	Low	Medium	High	P (gre)	P (gse)	P (gti)
$\geq 44 \ \&\leq 86$	0	0	0	0/23	0/14	0/3
$\geq 87 \ \&\leq 129$	7	10	2	7/23	10/13	2/4
$\geq 130 \ \&\leq 172$	15	4	2	15/23	4/13	2/4
$\geq 173 \ \&\leq 255$	0	0	0	0/23	0/14	0/3

18
 19 **Table 5** shows four classifications of opportunities for reading Green with different values of ranges.
 20 Green reading at low (P(gre)), medium (P(gse)), and high (P(gti)).

22 **Table 6. Blue Odds**

<i>BLUE</i>						
Range of value	Low	Medium	High	P (bre)	P (bse)	P (bti)
$\geq 44 \ \&\leq 86$	0	0	0	0/23	0/14	0/3
$\geq 87 \ \&\leq 129$	22	14	4	22/23	14/13	4/4
$\geq 130 \ \&\leq 172$	0	0	0	0/23	0/14	0/3
$\geq 173 \ \&\leq 255$	0	0	0	0/23	0/14	0/3

1 **Table 6** shows four classifications of opportunities for reading Blue with different values of ranges.
 2 Blue readings are at low (P(bre)), medium (P(bse)), and high (P(bti)). The RGB value from the
 3 TCS3200 sensor is $X = \{R= 118; G = 125; B = 145\}$, then the nitrogen content of paddy soil was
 4 calculated by using naïve Bayes' algorithm, then use the equation (1) as follows:

5 a. Determine P(c), the low, medium, and high probability of the sensor reading data and the amount
 6 of data

7 $P(R) = 23/40$

8 $P(S) = 13/40$

9 $P(T) = 5/40$

10 b. Determine P(x/c), the low, medium, and high of the RGB color table 4.4, 4.5, and 4.6.

11 • Low odds

12 $P(rre) = \frac{20}{23}; P(gre) = \frac{15}{23}; P(bre) = \frac{22}{23}$

13 • Medium odds

14 $P(rse) = \frac{10}{13}; P(gse) = \frac{10}{13}; P(bse) = \frac{14}{13}$

15 • High odds

16 $P(rti) = \frac{4}{4}; P(gti) = \frac{2}{4}; P(bti) = \frac{4}{4}$

17 c. Determine P(x|c)P(c)

18 • Low

19 $P(x|re)P(R) = \frac{10}{13} \times \frac{10}{13} \times \frac{14}{13} \times \frac{13}{40} = \frac{132.000}{486.680} = 0.27$

20 • Medium

21 $P(x|se)P(S) = \frac{10}{13} \times \frac{10}{13} \times \frac{14}{13} \times \frac{13}{40} = \frac{18200}{87880} = 0.2$

22 • High

23 $P(x|ti)P(T) = \frac{4}{4} \times \frac{2}{4} \times \frac{4}{4} \times \frac{4}{40} = \frac{128}{2560} = 0.05$

24 d. Calculate the set value of X on all data

25 $P(X) = \frac{34}{40} \times \frac{21}{40} \times \frac{40}{40} = \frac{28560}{64000} = 0.45$

26 e. Identify the odds of the low, medium, and high nitrogen levels.

27 • Low

28 $P(re|x) = \frac{0.27}{0.45} = 0.6$

29 • Medium

30 $P(se|x) = \frac{0.2}{0.45} = 0.4$

31 • High

32 $P(ti|x) = \frac{0.05}{0.45} = 0.11$

1 Therefore, the results of the calculation with *naïve bayes* can be concluded if $P(re|x) > P(se|x)$ dan
 2 $P(re|x) > P(ti|x)$. Then the nitrogen content is low.

3 This result was compared with previous research from Ma et al. 2017 [91] by using Mahalanobis
 4 distance analysis (MD) with the RGB values are 213 of R, 111 of G, and 56 of B. MD analysis from
 5 Ma et al. 2017 [91] was found 3 variations: principle component 1, 2, and 3 (PC1, PC2, and PC3) with
 6 the result -5.72 to 3.57, - 3.01 to 2.36, and -0.93 to 1.08, respectively. The equation of MD analysis
 7 can be determined as follows:

$$MD_{(x,y)} = \sqrt{(xi - y)^T M (xi - y)}$$

8
 9 Where: M is proportional to the inverse of the covariance matrix, dimensional x and y are PC value of
 10 the soil





11

12 3.5 Nitrogen Soil Mapping by Arc GIS

13 The data soil was performed in the polygon with 20 samples. The mapping area was made based
 14 on the results of nitrogen measurements of paddy soil by grouping several levels of nitrogen content.
 15 According to the Agricultural R & D Agency, the nitrogen measurement results are divided into four;
 16 low, medium, high, and very high. Therefore, the nitrogen content parameter can be made into a paddy
 17 soil nitrogen content grouping which can be seen in **Table 7**.

18

Table 7. Color Classification of Nitrogen Levels

Class	Color	Nitrogen Content	Score
1		Low	1
2		Medium	2
3		High	3
4		Very High	4

19

20 From the nitrogen measurements based on the colors, there are four levels of nitrogen content.
 21 Therefore, the Scoring for the color's parameter and the paddy soil nitrogen content in Lendah sub-
 22 district can be illustrated in **Table 8**. The soil sample is the place for taking soil samples.

23

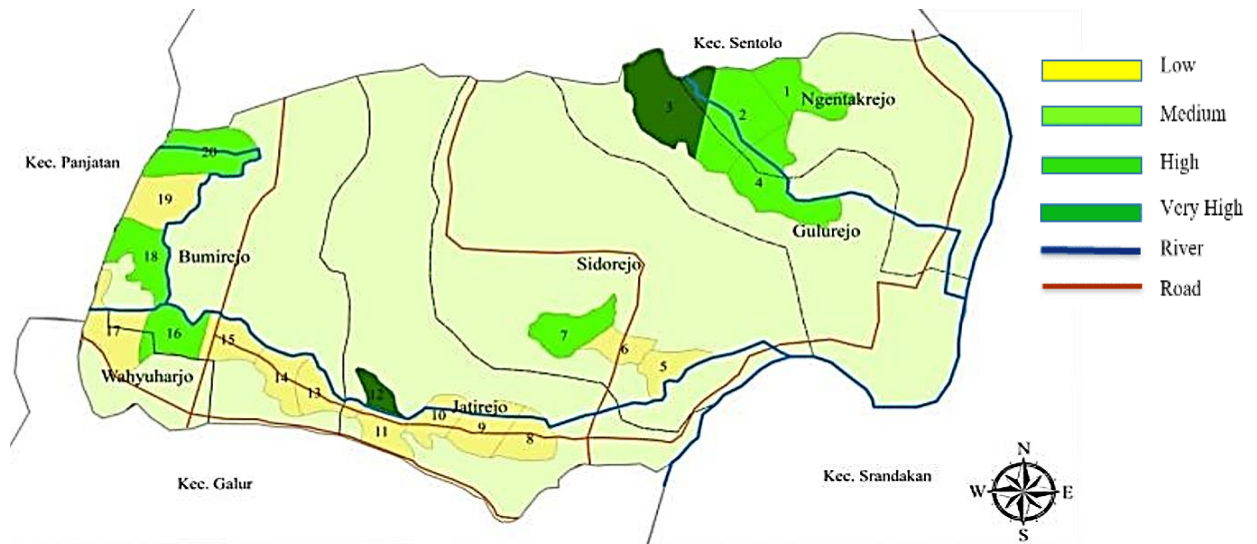
Table 8. The N Score of the Soil Nitrogen Levels

FID	Shape	Soil Sample	N Content	N Score
2	Polygon	1	Medium	2
1	Polygon	2	Medium	2
0	Polygon	3	High	3
3	Polygon	4	Medium	2
4	Polygon	5	Low	1
5	Polygon	6	Low	1
6	Polygon	7	Medium	2
7	Polygon	8	Low	1
8	Polygon	9	Low	1
9	Polygon	10	Low	1
10	Polygon	11	Low	1

11	Polygon	12	High	3
12	Polygon	13	Low	1
13	Polygon	14	Low	1
14	Polygon	15	Low	1
15	Polygon	16	Medium	2
16	Polygon	17	Low	1
17	Polygon	18	Medium	2
18	Polygon	19	Low	1
19	Polygon	20	Medium	2

1
2
3
4
5

After collecting the paddy soil nitrogen content, the results in 20 points/place of the soil sampling which the mapping of lowland soil in the Lendah sub-district can be implemented. Based on the attribute data in Figure 13 result, the map of lowland soil nitrogen content in Lendah district can be seen in **Fig. 9**.



6 **Fig. 9.** Map of the Soil Nitrogen Content of the Lendah District

7

8 From the mapping results of the paddy soil nitrogen in Lendah district, there are three levels of nitrogen
9 levels. Paddy soil nitrogen with a yellowish-green color (score = 1) is described as a low nitrogen level
10 with the percentage of 55%. The green color (score = 2) reflects moderate nitrogen levels with the rate
11 of 35%. Meanwhile, the dark green color (score = 3) is described as high nitrogen content with the
12 percentage of 10% from the number of samples measured nitrogen content. The experiment result of
13 nitrogen soil mapping was clarified in four levels: low of 55%, medium of 35%, and high of 10% from
14 the number of samples. This result was similar with previous research in the field of soil erosion and
15 flood hazard [92], soil protection function of forest ecosystems [93], evaluation of land suitability [94-
16 95], and soil fertility index [96].

17

18 4. Conclusion

1 A paddy field nitrogen levels by using the TCS3200 sensor and the Wemos D1 Mini microcontroller
2 has been proven to measure rice fields' nitrogen content and sending the TCS3200 sensor reading to the
3 web ceerduad.com to back up the data. The sensor accuracy by using Naïve Bayes for reading the paddy
4 soil nitrogen content's color is 87.5%. Mapping of the paddy soil nitrogen Lendah sub-district with
5 Geographic Information System (GIS) was successfully created to perform the analysis and action
6 quickly in the rice field area with low, medium, or high nitrogen levels.

9 **Conflict of Interest:**

10 The authors have stated no conflict of interest

11 **Credit Statements (Authors Contribution):**

12 **Anton Yudhana:** Supervision, Project Administration. Conceptualization, Methodology, Validation

13 **Dedy Sulisty:** Investigation, Collect Data, Software.

14 **Ilham Mufandi:** Writing, Editing, Visualization, Resources, Original Draft

16 **Acknowledgments:**

17 We would like to show our gratitude to Dr. Sunardi, M.T., the dean of Industrial Technology of
18 Universitas Ahmad Dahlan and Nuryono Satya Widodo, M.Eng. the head of Electrical Department of
19 Universitas Ahmad Dahlan for sharing their pearls of wisdom with us during the course of this research.

21 **Funding:**

22 This research was supported by Institute of Research and Community Services (LPPM) Universitas
23 Ahmad Dahlan.

27 **References**

- 28 [1] X. Jia, B. Hu, B. P. Marchant, L. Zhou, Z. Shi, and Y. Zhu, "A methodological framework for
29 identifying potential sources of soil heavy metal pollution based on machine learning: A case
30 study in the Yangtze Delta, China," *Environ. Pollut.*, vol. 250, pp. 601–609, 2019, doi:
31 10.1016/j.envpol.2019.04.047.
- 32 [2] B. P. Statistik, *Luas Panen Dan Produksi Beras di Indonesia (Harvested Area and Rice*
33 *Production in Indonesia)*, 1 st eddit. Badan Pusat Statistika Indonesia, 2018.
- 34 [3] W. Masiza, J. G. Chirima, H. Hamandawana, and R. Pillay, "Enhanced mapping of a
35 smallholder crop farming landscape through image fusion and model stacking," *Int. J. Remote*
36 *Sens.*, vol. 41, no. 22, pp. 8736–8753, 2020, doi: 10.1080/01431161.2020.1783017.

- 1 [4] J. B. Nsengiyumva and R. Valentino, "Predicting landslide susceptibility and risks using GIS-
2 based machine learning simulations, case of upper Nyabarongo catchment," *Geomatics, Nat.*
3 *Hazards Risk*, vol. 11, no. 1, pp. 1250–1277, 2020, doi: 10.1080/19475705.2020.1785555.
- 4 [5] P. R. Yoon and J. Y. Choi, "Effects of shift in growing season due to climate change on rice
5 yield and crop water requirements," *Paddy Water Environ.*, vol. 18, no. 2, pp. 291–307, 2020,
6 doi: 10.1007/s10333-019-00782-7.
- 7 [6] M. Avand, H. Moradi, and M. R. lasbooyee, "Using machine learning models, remote sensing,
8 and GIS to investigate the effects of changing climates and land uses on flood probability," *J.*
9 *Hydrol.*, vol. 595, 2021, doi: 10.1016/j.jhydrol.2020.125663.
- 10 [7] T. Takama and E. Aldrian, "Climate Change Vulnerability to Rice Paddy Production in Bali,
11 Indonesia," *Springer*, no. January, 2014, doi: 10.1007/978-3-642-40455-9.
- 12 [8] N. T. Chung, A. Jintrawet, and P. Promburom, "Impacts of Seasonal Climate Variability on
13 Rice Production in the Central Highlands of Vietnam," *Agric. Agric. Sci. Procedia*, vol. 5, pp.
14 83–88, 2015, doi: 10.1016/j.aaspro.2015.08.012.
- 15 [9] A. Yudhana and S. A. Akbar, "Penerapan Aplikasi Teknologi Agrimon Untuk Memantau
16 Kualitas Pertanian Padi Kepada Kelompok Tani Desa Argorejo," *Pros. Semin. Nas. Has.*
17 *Pengabd. Kpd. Masy.*, pp. 298–302, 2018.
- 18 [10] D. G. C. Kirono, J. R. A. Butler, J. L. McGregor, A. Ripaldi, J. Katzfey, and K. Nguyen,
19 "Historical and future seasonal rainfall variability in Nusa Tenggara Barat Province, Indonesia:
20 Implications for the agriculture and water sectors," *Clim. Risk Manag.*, vol. 12, pp. 45–58,
21 2016, doi: 10.1016/j.crm.2015.12.002.
- 22 [11] R. L. Naylor, D. S. Battisti, D. J. Vimont, W. P. Falcon, and M. B. Burke, "Assessing risks of
23 climate variability and climate change for Indonesian rice agriculture," *Proc. Natl. Acad. Sci.*
24 *U. S. A.*, vol. 104, no. 19, pp. 7752–7757, 2007, doi: 10.1073/pnas.0701825104.
- 25 [12] T. Yuliawan and I. Handoko, "The Effect of Temperature Rise to Rice Crop Yield in Indonesia
26 uses Shierary Rice Model with Geographical Information System (GIS) Feature," *Procedia*
27 *Environ. Sci.*, vol. 33, pp. 214–220, 2016, doi: 10.1016/j.proenv.2016.03.072.
- 28 [13] A. C. R. Lima, W. B. Hoogmoed, L. Brussaard, and F. Sacco Dos Anjos, "Farmers'
29 assessment of soil quality in rice production systems," *NJAS - Wageningen J. Life Sci.*, vol. 58,
30 no. 1–2, pp. 31–38, 2011, doi: 10.1016/j.njas.2010.08.002.
- 31 [14] B. D. Khaki, N. Honarjoo, N. Davatgar, A. Jalalian, and H. T. Golsefid, "Assessment of two
32 soil fertility indexes to evaluate paddy fields for rice cultivation," *Sustain.*, vol. 9, no. 8, pp. 1–

- 1 13, 2017, doi: 10.3390/su9081299.
- 2 [15] M. Pulido Moncada, D. Gabriels, D. Lobo, J. C. Rey, and W. M. Cornelis, “Visual field
3 assessment of soil structural quality in tropical soils,” *Soil Tillage Res.*, vol. 139, pp. 8–18,
4 2014, doi: 10.1016/j.still.2014.01.002.
- 5 [16] T. S. Sukitprapanon, M. Jantamenchai, D. Tulaphitak, and P. Vityakon, “Nutrient composition
6 of diverse organic residues and their long-term effects on available nutrients in a tropical sandy
7 soil,” *Heliyon*, vol. 6, no. 11, p. e05601, 2020, doi: 10.1016/j.heliyon.2020.e05601.
- 8 [17] I. N. Puja, A. A. N. Supadma, and D. A. N. I. M. Mega, “Kajian Unsur Hara Tanah Sawah
9 Untuk Menentukan Tingkat Kesuburan,” *Agrotrop J. Agric. Sci.*, vol. 3, no. 2, pp. 51–56,
10 2015.
- 11 [18] Z. Shirvani, “A holistic analysis for landslide susceptibility mapping applying geographic
12 object-based random forest: A comparison between protected and non-protected forests,”
13 *Remote Sens.*, vol. 12, no. 3, 2020, doi: 10.3390/rs12030434.
- 14 [19] C. W. Liu, Y. Sung, B. C. Chen, and H. Y. Lai, “Effects of nitrogen fertilizers on the growth
15 and nitrate content of lettuce (*Lactuca sativa* L.),” *Int. J. Environ. Res. Public Health*, vol. 11,
16 no. 4, pp. 4427–4440, 2014, doi: 10.3390/ijerph110404427.
- 17 [20] F. S. Gilliam, J. H. Billmyer, C. A. Walter, and W. T. Peterjohn, “Effects of excess nitrogen on
18 biogeochemistry of a temperate hardwood forest: Evidence of nutrient redistribution by a
19 forest understory species,” *Atmos. Environ.*, vol. 146, pp. 261–270, 2016, doi:
20 10.1016/j.atmosenv.2016.04.007.
- 21 [21] T. Triadiati, A. Pratama, and S. Abdulrachman, “Pertumbuhan dan Efisiensi Penggunaan
22 Nitrogen pada Padi (*Oryza sativa* L.) Dengan Pemberian Pupuk Urea yang Berbeda,” *Anat. dan*
23 *Fisiol.*, vol. XX, no. 2, pp. 1–14, 2012, doi: 10.14710/baf.v20i2.4767.
- 24 [22] K. C. Cameron, H. J. Di, and J. L. Moir, “Nitrogen losses from the soil/plant system: A
25 review,” *Ann. Appl. Biol.*, vol. 162, no. 2, pp. 145–173, 2013, doi: 10.1111/aab.12014.
- 26 [23] C. E. Akumu, K. Baldwin, and S. Dennis, “GIS-based modeling of forest soil moisture regime
27 classes: Using Rinker Lake in northwestern Ontario, Canada as a case study,” *Geoderma*, vol.
28 351, pp. 25–35, 2019, doi: <https://doi.org/10.1016/j.geoderma.2019.05.014>.
- 29 [24] B. M. Moro, I. R. Nuhu, E. Ato, and B. Nathaniel, “Effect of nitrogen rates on the growth and
30 yield of three rice (*Oryza sativa* L.) varieties in rain-fed lowland in the forest agro-ecological
31 zone of Ghana,” *Int. J. Agric. Sci. ISSN*, vol. 5, no. 7, pp. 878–885, 2015.
- 32 [25] A. Leon and K. Kohyama, “Estimating nitrogen and phosphorus losses from lowland paddy

- 1 rice fields during cropping seasons and its application for life cycle assessment,” *J. Clean.*
2 *Prod.*, vol. 164, pp. 963–979, 2017, doi: 10.1016/j.jclepro.2017.06.116.
- 3 [26] T. I. Jang, H. K. Kim, C. H. Seong, E. J. Lee, and S. W. Park, “Assessing nutrient losses of
4 reclaimed wastewater irrigation in paddy fields for sustainable agriculture,” *Agric. Water*
5 *Manag.*, vol. 104, pp. 235–243, 2012, doi: 10.1016/j.agwat.2011.12.022.
- 6 [27] Y. He, Z. Jianyun, Y. Shihong, H. Dalin, and X. Junzeng, “Effect of controlled drainage on
7 nitrogen losses from controlled irrigation paddy fields through subsurface drainage and
8 ammonia volatilization after fertilization,” *Agric. Water Manag.*, vol. 221, no. January 2018,
9 pp. 231–237, 2019, doi: 10.1016/j.agwat.2019.03.043.
- 10 [28] A. Yudhana and A. C. Kusuma, “Water quality monitoring at paddies farming based on
11 android,” *IOP Conf. Ser. Mater. Sci. Eng.*, vol. 403, no. 1, 2018, doi: 10.1088/1757-
12 899X/403/1/012042.
- 13 [29] K. Jha, A. Doshi, P. Patel, and M. Shah, “A comprehensive review on automation in
14 agriculture using artificial intelligence,” *Artif. Intell. Agric.*, vol. 2, pp. 1–12, 2019, doi:
15 10.1016/j.aiaa.2019.05.004.
- 16 [30] D. Devapal, “Smart Agro Farm Solar Powered Soil and Weather Monitoring System for
17 Farmers,” *Mater. Today Proc.*, vol. 24, pp. 1843–1854, 2019, doi:
18 10.1016/j.matpr.2020.03.609.
- 19 [31] A. B. Tarigan, Marheni, and J. Ginting, “Application of fertilizer type and dosage toward
20 brown planthopper (*Nilaparvata lugens* Stall.) attack level on several paddy (*Oryza sativa* L.)
21 varieties,” *IOP Conf. Ser. Earth Environ. Sci.*, vol. 260, no. 1, 2019, doi: 10.1088/1755-
22 1315/260/1/012179.
- 23 [32] B. W. Hariyadi, F. Nizak, I. R. Nurmalasari, and ..., “Effect of Dose And Time of Npk
24 Fertilizer Application on The Growth And Yield of Tomato Plants (*Lycopersicon Esculentum*
25 Mill),” *Agric.*, 2019, [Online]. Available: <https://eprints.unmerbaya.ac.id/id/eprint/208/>.
- 26 [33] Z. Zahra’a, E. M. Harahap, and Sarifuddin, “Peningkatan Produktifitas Padi Sawah (*Oryza*
27 *sativa* L.) Melalui Dosis Pupuk dan Melihat Kesuburan Tanah Dengan Indeks Hara Tanah di
28 Desa Tanjung Rejo Kecamatan Percut Sei Tuan,” *J. Pertan. Trop.*, vol. 5, no. 2, pp. 284–291,
29 2018, doi: 10.32734/jpt.v5i2.3022.
- 30 [34] D. Manikandan, A. M. Skl, and T. Sethukarasi, “Agro-gain - an absolute agriculture by
31 sensing and data-driven through iot platform,” *Procedia Comput. Sci.*, vol. 172, no. 2019, pp.
32 534–539, 2020, doi: 10.1016/j.procs.2020.05.065.

- 1 [35] J. Dong and X. Xiao, "Evolution of regional to global paddy rice mapping methods: A
2 review," *ISPRS J. Photogramm. Remote Sens.*, vol. 119, pp. 214–227, 2016, doi:
3 10.1016/j.isprsjprs.2016.05.010.
- 4 [36] X. Jiang, B. Zou, H. Feng, J. Tang, Y. Tu, and X. Zhao, "Spatial distribution mapping of Hg
5 contamination in subclass agricultural soils using GIS enhanced multiple linear regression," *J.
6 Geochemical Explor.*, vol. 196, pp. 1–7, 2019, doi: 10.1016/j.gexplo.2018.10.002.
- 7 [37] O. A. Adeyeye, E. A. Ikpokonte, and S. A. Arabi, "GIS-based groundwater potential mapping
8 within Dengi area, North Central Nigeria," *Egypt. J. Remote Sens. Sp. Sci.*, vol. 22, no. 2, pp.
9 175–181, 2019, doi: <https://doi.org/10.1016/j.ejrs.2018.04.003>.
- 10 [38] P. Yariyan *et al.*, "Flood susceptibility mapping using an improved analytic network process
11 with statistical models," *Geomatics, Nat. Hazards Risk*, vol. 11, no. 1, pp. 2282–2314, 2020,
12 doi: 10.1080/19475705.2020.1836036.
- 13 [39] X. Tang, Y. Shu, Y. Lian, Y. Zhao, and Y. Fu, "A spatial assessment of urban waterlogging
14 risk based on a Weighted Naïve Bayes classifier," *Sci. Total Environ.*, vol. 630, pp. 264–274,
15 2018, doi: 10.1016/j.scitotenv.2018.02.172.
- 16 [40] G. Zhou, R. Zhang, and D. Zhang, "Manifold learning co-location decision tree for remotely
17 sensed imagery classification," *Remote Sens.*, vol. 8, no. 10, 2016, doi: 10.3390/rs8100855.
- 18 [41] C. E. Akumu *et al.*, "GIS-fuzzy logic based approach in modeling soil texture: Using parts of
19 the Clay Belt and Hornepayne region in Ontario Canada as a case study," *Geoderma*, vol. 239–
20 240, pp. 13–24, 2015, doi: <https://doi.org/10.1016/j.geoderma.2014.09.021>.
- 21 [42] B. Aslam, A. Maqsoom, W. Salah Alaloul, M. Ali Musarat, T. Jabbar, and A. Zafar, "Soil
22 erosion susceptibility mapping using a GIS-based multi-criteria decision approach: Case of
23 district Chitral, Pakistan," *Ain Shams Eng. J.*, 2020, doi:
24 <https://doi.org/10.1016/j.asej.2020.09.015>.
- 25 [43] C. Di Salvo, F. Pennica, G. Ciotoli, and G. P. Cavinato, "A GIS-based procedure for
26 preliminary mapping of pluvial flood risk at metropolitan scale," *Environ. Model. Softw.*, vol.
27 107, pp. 64–84, 2018, doi: <https://doi.org/10.1016/j.envsoft.2018.05.020>.
- 28 [44] V.-H. Nhu *et al.*, "Mapping of groundwater spring potential in karst aquifer system using
29 novel ensemble bivariate and multivariate models," *Water (Switzerland)*, vol. 12, no. 4, pp. 1–
30 25, 2020, doi: 10.3390/W12040985.
- 31 [45] U. Sur, P. Singh, and S. R. Meena, "Landslide susceptibility assessment in a lesser Himalayan
32 road corridor (India) applying fuzzy AHP technique and earth-observation data," *Geomatics*,

- 1 *Nat. Hazards Risk*, vol. 11, no. 1, pp. 2176–2209, 2020, doi:
2 10.1080/19475705.2020.1836038.
- 3 [46] F. Baker and C. Smith, “A GIS and object based image analysis approach to mapping the
4 greenspace composition of domestic gardens in Leicester, UK,” *Landsc. Urban Plan.*, vol.
5 183, pp. 133–146, 2019, doi: <https://doi.org/10.1016/j.landurbplan.2018.12.002>.
- 6 [47] S. Ettazarini and M. El Jakani, “Mapping of groundwater potentiality in fractured aquifers
7 using remote sensing and GIS techniques: the case of Tafraoute region, Morocco,” *Environ.*
8 *Earth Sci.*, vol. 79, no. 5, 2020, doi: 10.1007/s12665-020-8848-1.
- 9 [48] J. Liu, K. M. Kamarudin, Y. Liu, and J. Zou, “Developing pandemic prevention and control by
10 anp-qfd approach: A case study on urban furniture design in china communities,” *Int. J.*
11 *Environ. Res. Public Health*, vol. 18, no. 5, pp. 1–26, 2021, doi: 10.3390/ijerph18052653.
- 12 [49] K. Chaudhary, P. K. Saraswat, and S. Khan, “Improvement in fluoride remediation technology
13 using GIS based mapping of fluoride contaminated groundwater and microbe assisted
14 phytoremediation,” *Ecotoxicol. Environ. Saf.*, vol. 168, pp. 164–176, 2019, doi:
15 <https://doi.org/10.1016/j.ecoenv.2018.10.007>.
- 16 [50] D. Karunanidhi, P. Aravinthasamy, M. Deepali, T. Subramani, and K. Shankar, “Groundwater
17 Pollution and Human Health Risks in an Industrialized Region of Southern India: Impacts of
18 the COVID-19 Lockdown and the Monsoon Seasonal Cycles,” *Arch. Environ. Contam.*
19 *Toxicol.*, vol. 80, no. 1, pp. 259–276, 2021, doi: 10.1007/s00244-020-00797-w.
- 20 [51] S. Elidrissi, F. E. Omdi, A. El Azhari, N. Fagel, and L. Daoudi, “New application of GIS and
21 statistical analysis in mapping the distribution of quaternary calcrete (Tensift Al Haouz area,
22 Central Morocco),” *CATENA*, vol. 188, p. 104419, 2020, doi:
23 <https://doi.org/10.1016/j.catena.2019.104419>.
- 24 [52] H. U. Leena, B. G. Premasudha, S. Panneerselvam, and P. K. Basavaraja, “Pedometric
25 mapping for soil fertility management – A case study,” *J. Saudi Soc. Agric. Sci.*, vol. 20, no. 2,
26 pp. 128–135, 2021, doi: <https://doi.org/10.1016/j.jssas.2020.12.008>.
- 27 [53] K. Koenig, B. Höfle, M. Hämmerle, T. Jarmer, B. Siegmann, and H. Lilienthal, “Comparative
28 classification analysis of post-harvest growth detection from terrestrial LiDAR point clouds in
29 precision agriculture,” *ISPRS J. Photogramm. Remote Sens.*, vol. 104, pp. 112–125, 2015, doi:
30 10.1016/j.isprsjprs.2015.03.003.
- 31 [54] L. Kang, “Street architecture landscape design based on Wireless Internet of Things and GIS
32 system,” *Microprocess. Microsyst.*, vol. 80, p. 103362, 2021, doi:
33 <https://doi.org/10.1016/j.micpro.2020.103362>.

- 1 [55] R. Wu, X. Zhang, Q. Yuan, and X. Lu, "Landscape design of urban theme park based on GIS
2 system and Internet of Things," *Microprocess. Microsyst.*, p. 103396, 2020, doi:
3 <https://doi.org/10.1016/j.micpro.2020.103396>.
- 4 [56] D. Al-Shammari, I. Fuentes, B. M. Whelan, P. Filippi, and T. F. A. Bishop, "Mapping of
5 cotton fields within-season using phenology-based metrics derived from a time series of
6 landsat imagery," *Remote Sens.*, vol. 12, no. 18, 2020, doi: 10.3390/RS12183038.
- 7 [57] S. Ganiny and O. Nisar, "Mathematical modeling and a month ahead forecast of the
8 coronavirus disease 2019 (COVID-19) pandemic: an Indian scenario," *Model. Earth Syst.
9 Environ.*, vol. 7, no. 1, pp. 29–40, 2021, doi: 10.1007/s40808-020-01080-6.
- 10 [58] W. Zhou, "GIS for Earth Sciences," D. Alderton and S. A. B. T.-E. of G. (Second E. Elias,
11 Eds. Oxford: Academic Press, 2021, pp. 281–293.
- 12 [59] V.-H. Dang, N.-D. Hoang, L.-M.-D. Nguyen, D. T. Bui, and P. Samui, "A novel GIS-Based
13 random forest machine algorithm for the spatial prediction of shallow landslide susceptibility,"
14 *Forests*, vol. 11, no. 1, 2020, doi: 10.3390/f11010118.
- 15 [60] M. S. Tehrany, L. Kumar, and F. Shabani, "A novel GIS-based ensemble technique for flood
16 susceptibility mapping using evidential belief function and support vector machine: Brisbane,
17 Australia," *PeerJ*, vol. 2019, no. 10, 2019, doi: 10.7717/peerj.7653.
- 18 [61] A. Arabameri, W. Chen, T. Blaschke, J. P. Tiefenbacher, B. Pradhan, and D. T. Bui, "Gully
19 head-cut distribution modeling using machine learning methods-a case study of N.W. Iran,"
20 *Water (Switzerland)*, vol. 12, no. 1, 2020, doi: 10.3390/w12010016.
- 21 [62] R. N. Rachmawati and N. H. Puspongoro, "Spatial Bayes Analysis on Cases of Malnutrition
22 in East Nusa Tenggara, Indonesia," *Procedia Comput. Sci.*, vol. 179, no. 2020, pp. 337–343,
23 2021, doi: 10.1016/j.procs.2021.01.014.
- 24 [63] G. Prabakaran, D. Vaithiyanathan, and M. Ganesan, "FPGA based effective agriculture
25 productivity prediction system using fuzzy support vector machine," *Math. Comput. Simul.*,
26 vol. 185, pp. 1–16, 2021, doi: <https://doi.org/10.1016/j.matcom.2020.12.011>.
- 27 [64] M. Ahmadlou *et al.*, "Flood susceptibility mapping and assessment using a novel deep learning
28 model combining multilayer perceptron and autoencoder neural networks," *J. Flood Risk
29 Manag.*, vol. 14, no. 1, 2021, doi: 10.1111/jfr3.12683.
- 30 [65] D. Tien Bui *et al.*, "A new intelligence approach based on GIS-based Multivariate Adaptive
31 Regression Splines and metaheuristic optimization for predicting flash flood susceptible areas
32 at high-frequency tropical typhoon area," *J. Hydrol.*, vol. 575, pp. 314–326, 2019, doi:

- 1 10.1016/j.jhydrol.2019.05.046.
- 2 [66] A. Motevalli, S. A. Naghibi, H. Hashemi, R. Berndtsson, B. Pradhan, and V. Gholami,
3 “Inverse method using boosted regression tree and k-nearest neighbor to quantify effects of
4 point and non-point source nitrate pollution in groundwater,” *J. Clean. Prod.*, vol. 228, pp.
5 1248–1263, 2019, doi: 10.1016/j.jclepro.2019.04.293.
- 6 [67] P. A. Aguilera, A. Fernández, R. Fernández, R. Rumí, and A. Salmerón, “Bayesian networks
7 in environmental modelling,” *Environ. Model. Softw.*, vol. 26, no. 12, pp. 1376–1388, 2011,
8 doi: <https://doi.org/10.1016/j.envsoft.2011.06.004>.
- 9 [68] P. A. Aguilera, A. Fernández, F. Reche, and R. Rumí, “Hybrid Bayesian network classifiers:
10 Application to species distribution models,” *Environ. Model. Softw.*, vol. 25, no. 12, pp. 1630–
11 1639, 2010, doi: <https://doi.org/10.1016/j.envsoft.2010.04.016>.
- 12 [69] H. R. Pourghasemi *et al.*, “Assessment of Urban Infrastructures Exposed to Flood Using
13 Susceptibility Map and Google Earth Engine,” *IEEE J. Sel. Top. Appl. Earth Obs. Remote
14 Sens.*, vol. 14, pp. 1923–1937, 2021, doi: 10.1109/JSTARS.2020.3045278.
- 15 [70] D. Seka, B. S. Bonny, A. N. Yoboué, S. R. Sié, and B. A. Adopo-Gourène, “Identification of
16 maize (*Zea mays* L.) progeny genotypes based on two probabilistic approaches: Logistic
17 regression and naïve Bayes,” *Artif. Intell. Agric.*, vol. 1, pp. 9–13, 2019, doi:
18 10.1016/j.aiia.2019.03.001.
- 19 [71] Hubert, P. Phoenix, R. Sudaryono, and D. Suhartono, “Classifying Promotion Images Using
20 Optical Character Recognition and Naïve Bayes Classifier,” *Procedia Comput. Sci.*, vol. 179,
21 no. 2020, pp. 498–506, 2021, doi: 10.1016/j.procs.2021.01.033.
- 22 [72] D. T. Bui *et al.*, “Landslide detection and susceptibility mapping by AIRSAR data using
23 support vector machine and index of entropy models in Cameron Highlands, Malaysia,”
24 *Remote Sens.*, vol. 10, no. 10, 2018, doi: 10.3390/rs10101527.
- 25 [73] B. T. Pham, D. Tien Bui, H. R. Pourghasemi, P. Indra, and M. B. Dholakia, “Landslide
26 susceptibility assessment in the Uttarakhand area (India) using GIS: a comparison study of
27 prediction capability of naïve bayes, multilayer perceptron neural networks, and functional
28 trees methods,” *Theor. Appl. Climatol.*, vol. 128, no. 1–2, pp. 255–273, 2017, doi:
29 10.1007/s00704-015-1702-9.
- 30 [74] R. Priya, D. Ramesh, and E. Khosla, “Crop Prediction on the Region Belts of India: A Naïve
31 Bayes MapReduce Precision Agricultural Model,” *2018 Int. Conf. Adv. Comput. Commun.
32 Informatics, ICACCI 2018*, pp. 99–104, 2018, doi: 10.1109/ICACCI.2018.8554948.

- 1 [75] R. Jahan, "Applying Naive Bayes Classification Technique for Classification of Improved
2 Agricultural Land soils," *Int. J. Res. Appl. Sci. Eng. Technol.*, vol. 6, no. 5, pp. 189–193, 2018,
3 doi: 10.22214/ijraset.2018.5030.
- 4 [76] W. Paas and J. C. J. Groot, "Creating adaptive farm typologies using Naive Bayesian
5 classification," *Inf. Process. Agric.*, vol. 4, no. 3, pp. 220–227, 2017, doi:
6 10.1016/j.inpa.2017.05.005.
- 7 [77] A. Kadirhodjaev, P. R. Kadavi, C.-W. Lee, and S. Lee, "Analysis of the relationships between
8 topographic factors and landslide occurrence and their application to landslide susceptibility
9 mapping: a case study of Mingchukur, Uzbekistan," *Geosci. J.*, vol. 22, no. 6, pp. 1053–1067,
10 2018, doi: 10.1007/s12303-018-0052-x.
- 11 [78] T. Setiadi, F. Noviyanto, H. Hardianto, A. Tarmuji, A. Fadlil, and M. Wibowo,
12 "Implementation of naïve bayes method in food crops planting recommendation," *Int. J. Sci.*
13 *Technol. Res.*, vol. 9, no. 2, pp. 4750–4755, 2020.
- 14 [79] H. Zhang, Z. X. Cao, M. Li, Y. Z. Li, and C. Peng, "Novel naïve Bayes classification models
15 for predicting the carcinogenicity of chemicals," *Food Chem. Toxicol.*, vol. 97, pp. 141–149,
16 2016, doi: 10.1016/j.fct.2016.09.005.
- 17 [80] M. Ismail, M. K. Abdel Ghaffar, and M. A. Azzam, "GIS application to identify the potential
18 for certain irrigated agriculture uses on some soils in Western Desert, Egypt," *Egypt. J. Remote*
19 *Sens. Sp. Sci.*, vol. 15, no. 1, pp. 39–51, 2012, doi: 10.1016/j.ejrs.2012.03.001.
- 20 [81] M. N. Gebeyehu, "Remote Sensing and GIS Application in Agriculture and Natural Resource
21 Management," *Int. J. Environ. Sci. Nat. Resour.*, vol. 19, no. 2, 2019, doi:
22 10.19080/ijesnr.2019.19.556009.
- 23 [82] R. Sharma, S. S. Kamble, and A. Gunasekaran, "Big GIS analytics framework for agriculture
24 supply chains: A literature review identifying the current trends and future perspectives,"
25 *Comput. Electron. Agric.*, vol. 155, no. October, pp. 103–120, 2018, doi:
26 10.1016/j.compag.2018.10.001.
- 27 [83] M. A. Hossain Bhuiyan, S. Chandra Karmaker, M. Bodrud-Doza, M. A. Rakib, and B. B.
28 Saha, "Enrichment, sources and ecological risk mapping of heavy metals in agricultural soils
29 of dhaka district employing SOM, PMF and GIS methods," *Chemosphere*, vol. 263, p. 128339,
30 2021, doi: 10.1016/j.chemosphere.2020.128339.
- 31 [84] U. Atila, I. R. Karas, and A. Abdul-Rahman, "Integration of CityGML and Oracle Spatial for
32 implementing 3D network analysis solutions and routing simulation within 3D-GIS
33 environment," *Geo-Spatial Inf. Sci.*, vol. 16, no. 4, pp. 221–237, 2013, doi:

- 1 10.1080/10095020.2013.867102.
- 2 [85] I. R. Karas and S. Demir, “Dijkstra algorithm interactive training software development for
3 network analysis applications in GIS,” *Energy Educ. Sci. Technol. Part A Energy Sci. Res.*,
4 vol. 28, no. 1, pp. 445–452, 2011.
- 5 [86] S. Ahmed, R. F. Ibrahim, and H. A. Hefny, “GIS-based network analysis for the roads network
6 of the Greater Cairo area,” *CEUR Workshop Proc.*, vol. 2144, 2017.
- 7 [87] M. Dedeoğlu and O. Dengiz, “Generating of land suitability index for wheat with hybrid
8 system approach using AHP and GIS,” *Comput. Electron. Agric.*, vol. 167, no. October, p.
9 105062, 2019, doi: 10.1016/j.compag.2019.105062.
- 10 [88] M. S. Tehrany, B. Pradhan, and M. N. Jebur, “Flood susceptibility mapping using a novel
11 ensemble weights-of-evidence and support vector machine models in GIS,” *J. Hydrol.*, vol.
12 512, pp. 332–343, 2014, doi: 10.1016/j.jhydrol.2014.03.008.
- 13 [89] I. Elkhachy, “Flash Flood Hazard Mapping Using Satellite Images and GIS Tools: A case
14 study of Najran City, Kingdom of Saudi Arabia (KSA),” *Egypt. J. Remote Sens. Sp. Sci.*, vol.
15 18, no. 2, pp. 261–278, 2015, doi: 10.1016/j.ejrs.2015.06.007.
- 16 [90] M. M. Msabi and M. Makonyo, “Flood susceptibility mapping using GIS and multi-criteria
17 decision analysis: A case of Dodoma region, central Tanzania,” *Remote Sens. Appl. Soc.
18 Environ.*, vol. 21, p. 100445, 2021, doi: <https://doi.org/10.1016/j.rsase.2020.100445>.
- 19 [91] F. Ma *et al.*, “Soil variability description using Fourier transform mid-infrared photoacoustic
20 spectroscopy coupling with RGB method,” *Catena*, vol. 152, pp. 190–197, 2017, doi:
21 10.1016/j.catena.2017.01.005.
- 22 [92] I. E. Olorunfemi, A. A. Komolafe, J. T. Fasinmirin, A. A. Olufayo, and S. O. Akande, “A GIS-
23 based assessment of the potential soil erosion and flood hazard zones in Ekiti State,
24 Southwestern Nigeria using integrated RUSLE and HAND models,” *CATENA*, vol. 194, p.
25 104725, 2020, doi: <https://doi.org/10.1016/j.catena.2020.104725>.
- 26 [93] N. Bozali, “Assessment of the soil protection function of forest ecosystems using GIS-based
27 Multi-Criteria Decision Analysis: A case study in Adiyaman, Turkey,” *Glob. Ecol. Conserv.*,
28 vol. 24, p. e01271, 2020, doi: <https://doi.org/10.1016/j.gecco.2020.e01271>.
- 29 [94] A. A. El Baroudy, “Mapping and evaluating land suitability using a GIS-based model,”
30 *Catena*, vol. 140, pp. 96–104, 2016, doi: 10.1016/j.catena.2015.12.010.
- 31 [95] H. Kazemi and H. Akinci, “A land use suitability model for rainfed farming by Multi-criteria
32 Decision-making Analysis (MCDA) and Geographic Information System (GIS),” *Ecol. Eng.*,

- 1 vol. 116, no. March, pp. 1–6, 2018, doi: 10.1016/j.ecoleng.2018.02.021.
- 2 [96] T. Tunçay, Ş. Kılıç, M. Dedeoğlu, O. Dengiz, O. Başkan, and İ. Bayramin, “Assessing soil
3 fertility index based on remote sensing and gis techniques with field validation in a semiarid
4 agricultural ecosystem,” *J. Arid Environ.*, vol. 190, no. March, 2021, doi:
5 10.1016/j.jaridenv.2021.104525.
- 6

Lampiran 4.

Submission to Sensing and Bio-Sensing Research - manuscript number
Eksternal
Kotak Masuk

Sensing and Bio-Sensing Research <em@editorialmanager.com>
Sel, 20 Apr 2021 23.33
kepada saya

Terjemahkan pesan
Nonaktifkan untuk: Inggris

This is an automated message.

Manuscript Number: SBSR-D-21-00036
GIS-BASED AND NAÏVE BAYES FOR NITROGEN SOIL MAPPING IN LENDAH,
INDONESIA

Dear Mr Yudhana,

Your above referenced submission has been assigned a manuscript number: SBSR-D-21-00036.

To track the status of your manuscript, please log in as an author at <https://www.editorialmanager.com/sbsr/>, and navigate to the "Submissions Being Processed" folder.

Thank you for submitting your work to this journal.

Lampiran 5.

Decision on submission to Sensing and Bio-Sensing Research
Eksternal
Kotak Masuk

Sensing and Bio-Sensing Research <em@editorialmanager.com>
Sen, 17 Mei 2021 17.10
kepada saya

Terjemahkan pesan
Nonaktifkan untuk: Inggris
Manuscript Number: SBSR-D-21-00036

GIS-BASED AND NAÏVE BAYES FOR NITROGEN SOIL MAPPING IN LENDAH,
INDONESIA

Dear Mr Yudhana,

Thank you for submitting your manuscript to Sensing and Bio-Sensing Research.

I have completed my evaluation of your manuscript. The reviewers recommend reconsideration of your manuscript following minor revision and modification. I invite you to resubmit your manuscript after addressing the comments below. Please resubmit your revised manuscript by Jun 16, 2021.

List comment dari reviewer:

<https://www.editorialmanager.com/sbsr/>, and navigate to the "Submissions Needing Revision" folder under the Author Main Menu.

Sensing and Bio-Sensing Research values your contribution and I look forward to receiving your revised manuscript.

Kind regards,

Richard Luxton

Editor-in-Chief

Sensing and Bio-Sensing Research

Editor and Reviewer comments:

1. overall the information presented represents valuable information regarding the mapping area by using Arch GIS. The introduction and theory are relevant. The previous study finding is describes clear for explain the present study. This tool is making well with accuracy 87.5%. I suggest that the accuracy tool need to compare with other work in the field of mapping area by using TCS3200 and give some reasons why your works is better that before?
2. In fig 6. Shows the mapping design scheme. Please explain more every part the function from diagram flow.
3. overall, the information of Nitrogen soil mapping by Arc Gis (sub-chapter 3.4) is clear and well done with four nitrogen contents (low, medium, high, and very high). This part not show the comparable with previous work. So I suggest that this part should add the comparison with previous work.
4. in the part of Naïve Bayes classifier (sub 3.4) I found some words that missing with numerical writing. Please change!
5. in sub-3.4 addition the previous research in the field RGB for comparing this work with previous work.

Lampiran 6

Revision reminder for Sensing and Bio-Sensing Research
Eksternal
Kotak Masuk

Sensing and Bio-Sensing Research <em@editorialmanager.com>
Rab, 9 Jun 2021 16.38
kepada saya

Terjemahkan pesan
Nonaktifkan untuk: Inggris
This is an automated message.

Manuscript Number: SBSR-D-21-00036R1
GIS-BASED AND NAÏVE BAYES FOR NITROGEN SOIL MAPPING IN LENDAH, INDONESIA

Dear Mr Yudhana,

We would like to remind you that on May 17, 2021 we asked you to revise your above referenced manuscript and your revision is due by Jun 16, 2021.

Sensing and Bio-Sensing Research values your contribution and we look forward to receiving your revised manuscript.

To submit your revision, please log in as an author at <https://www.editorialmanager.com/SBSR/>, and navigate to the "Submissions Needing Revision" folder under the Author Main Menu. You will also find the decision letter and comments available there.

Lampiran 7.

Confirming submission to Sensing and Bio-Sensing Research
Eksternal
Kotak Masuk

Sensing and Bio-Sensing Research <em@editorialmanager.com>
Rab, 9 Jun 2021 22.18
kepada saya

Terjemahkan pesan
Nonaktifkan untuk: Inggris
This is an automated message.

Manuscript Number: SBSR-D-21-00036R1

GIS-BASED AND NAÏVE BAYES FOR NITROGEN SOIL MAPPING IN LENDAH, INDONESIA

Dear Mr Yudhana,

We have received the above referenced manuscript you submitted to Sensing and Bio-Sensing Research.

To track the status of your manuscript, please log in as an author at <https://www.editorialmanager.com/sbsr/>, and navigate to the "Revisions Being Processed" folder.

Thank you for submitting your revision to this journal.

Kind regards,

Respon comment dari penulis:

Author's Response To Reviewer Comments - Google Chrome
editorialmanager.com/sbsr/viewAuthorsResponseToReviewers.aspx?docid=1744&revision=1&msid={F81C4C20-B3C7-4D8C-89BF-D49577E8C414}

Author's Response To Reviewer Comments

Close

Comment 1:
overall the information presented represents valuable information regarding the mapping area by using Arch GIS. The introduction and theory are relevant. The previous study finding is describes clear for explain the present study. This tool is making well with accuracy 87.5%. I suggest that the accuracy tool need to compare with other work in the field of mapping area by using TCS3200 and give some reasons why your works is better that before?

Reply to comment 1:
We deeply appreciate your helpful comment. We have added the previous research in the field of GIS mapping with the difference of application and methods. It can be described in Table 2. In addition, the accuracy in this study is higher than the previous research. the experimental result in this study is better than the previous research because we made a prototype to check the N content of paddy soil using the TCS3200 sensor and data sent can be show in the website of ceerduad.com in which the design of prototype is simple and easy to use. In can be describe in fig of this manuscript that i have attach in the reviewer report.
in here, the detail of the comparison between this study and previous research can be seen in below:
1. Research from (Dedeoğlu and Dengiz, 2019) with the method of Hybrid system approach by using analytic hierarchy process (AHP) and GIS were Accuracy of 83% and accuracy of NDVI (Normalized difference vegetation index) of 78%. This research was applied in the land suitability.
2. The experiment from Tehrani, Pradhan, and Jebur 2014) was used Weigh-of Evidence (WoE) model and SIG-SVM (Support vector machine model) Standalone RBF (Radial basis function) and SVM with the result of Success rate accuracy of 84.67%, prediction rate of 84.28%, Success rate accuracy of 86.47% and prediction rate of 81.27%
3. the experiment from (Elkhrachy, 2015) was conducted by Satellite image and GIS Tools with the result of Overall accuracy of 84.4% and Kappa coefficient of 82.5%. this experiment was performed in Flash flood hazard mapping.
4. The experiment from (Akumu et al. 2015) was conducted by GIS-Fuzzy logic based with the result of Overall accuracy of 79% and Kappa statistics of 70%. this research was applied to modelling soil texture.
5. (Msabi and Makonyo, 2021) was investigated the flood susceptibility mapping by using GIS and multi-criteria decision analysis with the Accuracy of 87.24%.
6. (Akumu, Baldwin, and Dennis, 2019) was investigated the Soil moisture regime (SMR) mapping with the accuracy of 65%.
7. Our experiment was conducted by using GIS Based and Naive Bayes with accuracy of 87.5% to nitrogen soil mapping.

Comment 2:
In fig 6. Shows the mapping design scheme. Please explain more every part the function from diagram flow.

Reply to comment 2:
As suggested by the reviewer, we have added the description of the function from diagram flow (Fig 6). Please find in the detail below or find the line from (178 to 187) of manuscripts

- Display satellite image from google earth is to get maps image based on the current situation or in real terms. Find in fig 1 of manuscripts
- Arc GIS software is to mapping area and to obtain training data with 20 samples in Lendah, Indonesia.
- Making of SHP (Shapefile) is a step to save the maps image
- Scoring is to calculated the soil nitrogen level based on the color parameter and the paddy soil nitrogen content. Find in table 8 the Nitrogen (N) score of the soil
- Overlay is applied to combine a shapefile into one structure
- Layout is to described the mapping result of the paddy soil nitrogen

1 ?

Lampiran 8

Decision on submission to Sensing and Bio-Sensing Research
Eksternal
Kotak Masuk

Sensing and Bio-Sensing Research <em@editorialmanager.com>
Sen, 14 Jun 2021 15.41
kepada saya

Terjemahkan pesan
Nonaktifkan untuk: Inggris
Manuscript Number: SBSR-D-21-00036R1

GIS-BASED AND NAÏVE BAYES FOR NITROGEN SOIL MAPPING IN LENDAH, INDONESIA

Dear Mr Yudhana,

Thank you for submitting your manuscript to Sensing and Bio-Sensing Research.

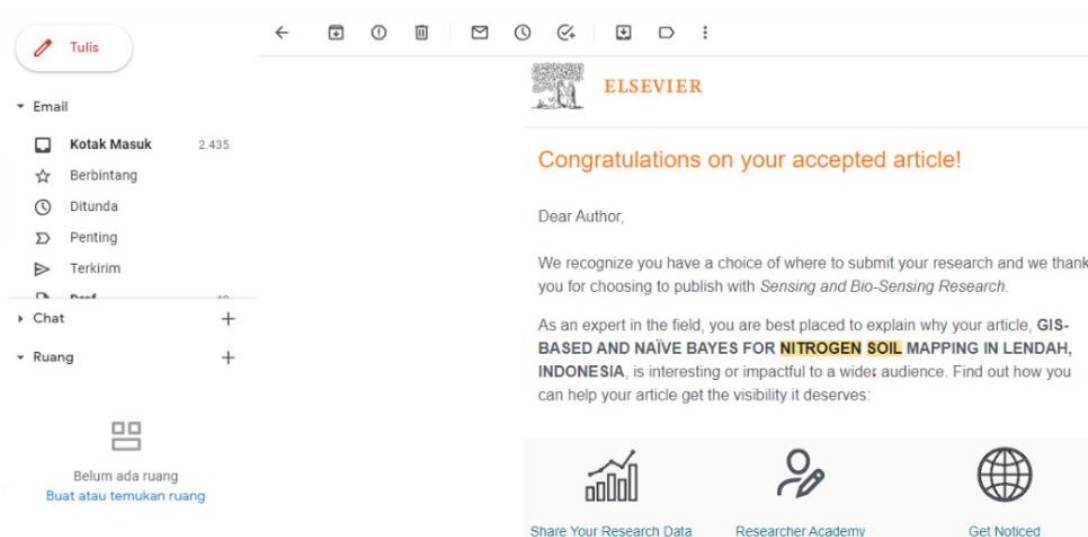
I am pleased to inform you that your manuscript has been **accepted for publication.**

My comments, and any reviewer comments, are below.
Your accepted manuscript will now be transferred to our production department. We will create a proof which you will be asked to check, and you will also be asked to complete a number of online forms required for publication. If we need additional information from you during the production process, we will contact you directly.

We appreciate you submitting your manuscript to Sensing and Bio-Sensing Research and hope you will consider us again for future submissions.

Kind regards,
Richard Luxton

Lampiran 9.



The screenshot shows an email client interface. On the left is a sidebar with navigation options: 'Email' (with sub-items: Kotak Masuk 2.435, Berbintang, Ditunda, Penting, Terkirim), 'Chat', and 'Ruang'. The main content area displays an email from Elsevier with the subject 'Congratulations on your accepted article!'. The email body reads: 'Dear Author, We recognize you have a choice of where to submit your research and we thank you for choosing to publish with Sensing and Bio-Sensing Research. As an expert in the field, you are best placed to explain why your article, GIS-BASED AND NAÏVE BAYES FOR NITROGEN SOIL MAPPING IN LENDAH, INDONESIA, is interesting or impactful to a wider audience. Find out how you can help your article get the visibility it deserves:'. Below the text are three icons with labels: 'Share Your Research Data' (bar chart icon), 'Researcher Academy' (person icon), and 'Get Noticed' (globe icon).

Lampiran 10.

Production has begun on your article [SBSR_100435] in Sensing and Bio-Sensing Research
Eksternal
Kotak Masuk

t.manavalan@elsevier.com
Jum, 18 Jun 2021 12.19
kepada saya

Terjemahkan pesan
Nonaktifkan untuk: Inggris

Our reference: SBSR 100435
Article reference: SBSR_SBSR-D-21-00036
Article title: GIS-based and Naïve Bayes for nitrogen soil mapping in Lendah, Indonesia
To be published in: Sensing and Bio-Sensing Research

Dear Dr. Yudhana,

Thank you for choosing to publish in Sensing and Bio-Sensing Research. Please read this e-mail carefully as it contains important information.

FINALIZE PUBLISHING YOUR ARTICLE:

We work hard to publish our authors' articles online as quickly and efficiently as possible, therefore processing of your accepted manuscript for publication has already begun. To ensure that we publish your article in accordance with your wishes, please now complete the forms found here:

<http://authors.elsevier.com/authorforms/SBSR100435/950e5165ba64e8d1305550ad6127f75f>

If this link does not work, please copy the entire URL (noting that it may run on to a second line in this message) into your browser. You should log in with your Elsevier Profile credentials, which you may have already created when submitting your article.

Lampiran 11.

Publishing Agreement completed for your article [SBSR_100435]
Eksternal
Kotak Masuk

Elsevier - Author Forms <Article_Status@elsevier.com>
Lampiran
Sen, 21 Jun 2021 22.10
kepada ilhammufandi1805, saya

Terjemahkan pesan
Nonaktifkan untuk: Inggris
Elsevier

cover
Dear Dr. Yudhana,

Thank you for completing the Publishing Agreement Form for your article GIS-based and Naïve Bayes for nitrogen soil mapping in Lendah, Indonesia. Please find attached a copy of the "Journal Publishing (License) Agreement" which you completed online on June 21, 2021.

If you have any questions, please do not hesitate to contact us. To help us assist you, please quote our article reference SBSR_100435 in all correspondence.

Now that your article has been accepted, you will want to maximize the impact of your work. Elsevier facilitates and encourages authors to share their article responsibly. To learn about the many ways in which you can share your article whilst respecting copyright, visit: www.elsevier.com/sharing-articles.

We are committed to publishing your article as quickly as possible.

Kind regards,
Elsevier Researcher Support

Lampiran 12.

Review the proofs of your article [SBSR_100435] in Sensing and Bio-Sensing Research
Eksternal
Kotak Masuk

t.manavalan@elsevier.com

Rab, 23 Jun 2021 07.03

kepada saya

Terjemahkan pesan
Nonaktifkan untuk: Inggris

PLEASE DO NOT ALTER THE SUBJECT LINE OF THIS EMAIL

Our reference: SBSR 100435

Article reference: SBSR_SBSR-D-21-00036

Article title: GIS-based and Naïve Bayes for nitrogen soil mapping in Lendah, Indonesia

To be published in: Sensing and Bio-Sensing Research

Dear Dr. Yudhana,

We recently sent you proofs of the above-mentioned article. Our records indicate that we have not yet received your proof corrections or your approval to publish the article without change.

Please review the proof and submit any corrections within 48 hours to help us publish your article as quickly and accurately as possible.

Please click on the link below to access your proofs and the instructions for returning your corrections.

[https://elsevier.proofcentral.com/en-us/landing-page.html?
token=31b25ecb0f7dd5b1ff5390e3b9ad40](https://elsevier.proofcentral.com/en-us/landing-page.html?token=31b25ecb0f7dd5b1ff5390e3b9ad40)

If this link does not work, please copy the entire URL (noting that it may run on to a second line in this message) into your browser.

Lampiran 13.

Your Elsevier invoice OAD0000131413
Eksternal
Kotak Masuk

OAElsevierInvoicesNoReply@elsevier.com

Lampiran

Jum, 2 Jul 2021 12.46

kepada saya

Terjemahkan pesan
Nonaktifkan untuk: Inggris
Elsevier Logo

Dear Sir/Madam,

Please find your invoice OAD0000131413 attached to this email.

Transaction Number	Due Date	Currency	Transaction Amount
OAD0000131413	01-AUG-2021	USD	1,400.00

Can we assist you with anything?

For payment and bank account information please refer to the attached invoice. If you have a question regarding the invoice please follow the link to our customer support center.

Kind regards,

Researcher Support

Dear Sir/Madam,

Please find your invoice OAD0000131413 attached to this email.

Transaction Number	Due Date	Currency	Transaction Amount
OAD0000131413	01-AUG-2021	USD	1,400.00

Can we assist you with anything?

Lampiran 14.

Dear Author, your article is online, what's next?
Eksternal
Kotak Masuk

Sensing and Bio-Sensing Research <service@author.email.elsevier.com>
Jum, 9 Jul 2021 18.36
kepada saya

Terjemahkan pesan
Nonaktifkan untuk: Inggris
If you are unable to view this message correctly, click here

Elsevier

Your article is online - time to get noticed!
Dear Author,

Your article GIS-based and Naive Bayes for nitrogen soil mapping in Lendah, Indonesia is available on ScienceDirect, where over 15 million researchers around the world can read it.

Here are a few tips on getting your article noticed:

Mendeley - Showcase your research, collaborate with peers, and get insights Researcher Academy-Learn how to promote your work and tell your story Share Links - Share and Promote your article
Mendeley Researcher Academy Sharing and Promoting

Celebrate the publication of your article infographic

Thank you for publishing with us. We look forward to receiving manuscripts from you in the future!
Sincerely,

The Researcher Engagement Team

Can we assist you with something? Visit our help page »



ELSEVIER

Your article is online - time to get noticed!

Dear Author,

Your article **GIS-based and Naive Bayes for nitrogen soil mapping in Lendah, Indonesia** is available on ScienceDirect, where over 15 million researchers around the world can read it.

Here are a few tips on getting your article noticed:



Mendeley



Researcher Academy



Sharing and Promoting