

ACCEPTED MANUSCRIPT • OPEN ACCESS

Evidence for temporary and local transition of sp^2 graphite-type to sp^3 diamond-type bonding induced by the tip of an atomic force microscope

To cite this article before publication: Thomas P Hofmann *et al* 2022 *New J. Phys.* in press <https://doi.org/10.1088/1367-2630/ac8570>

Manuscript version: Accepted Manuscript

Accepted Manuscript is “the version of the article accepted for publication including all changes made as a result of the peer review process, and which may also include the addition to the article by IOP Publishing of a header, an article ID, a cover sheet and/or an ‘Accepted Manuscript’ watermark, but excluding any other editing, typesetting or other changes made by IOP Publishing and/or its licensors”

This Accepted Manuscript is © 2022 The Author(s). Published by IOP Publishing Ltd on behalf of Deutsche Physikalische Gesellschaft and the Institute of Physics.

As the Version of Record of this article is going to be / has been published on a gold open access basis under a CC BY 3.0 licence, this Accepted Manuscript is available for reuse under a CC BY 3.0 licence immediately.

Everyone is permitted to use all or part of the original content in this article, provided that they adhere to all the terms of the licence <https://creativecommons.org/licenses/by/3.0>

Although reasonable endeavours have been taken to obtain all necessary permissions from third parties to include their copyrighted content within this article, their full citation and copyright line may not be present in this Accepted Manuscript version. Before using any content from this article, please refer to the Version of Record on IOPscience once published for full citation and copyright details, as permissions may be required. All third party content is fully copyright protected and is not published on a gold open access basis under a CC BY licence, unless that is specifically stated in the figure caption in the Version of Record.

View the [article online](#) for updates and enhancements.

Evidence for temporary and local transition of sp^2 graphite-type to sp^3 diamond-type bonding induced by the tip of an atomic force microscope

Thomas Hofmann¹, Xinguo Ren², Alfred J. Weymouth¹, Daniel Meuer¹, Alexander Liebig¹, Andrea Donarini³, Franz J. Giessibl¹

E-mail: franz.giessibl@ur.de

¹Institute of Experimental and Applied Physics, Department of Physics, University of Regensburg, 93040 Regensburg, Germany

²Beijing National Laboratory for Condensed Matter Physics, Institute of Physics, Chinese Academy of Sciences, 3rd South Str. 8, Beijing 100190, China

³Institute of Theoretical Physics, Department of Physics, University of Regensburg, 93040 Regensburg, Germany

Abstract. Artificial diamond is created by exposing graphite to pressures on the order of 10 GPa and temperatures of about 2000 K. Here, we provide evidence that the pressure exerted by the tip of an atomic force microscope onto graphene over the carbon buffer layer of silicon carbide can lead to a temporary transition of graphite to diamond on the atomic scale. We perform atomic force microscopy with CO terminated tips and copper oxide (CuOx) tips to image graphene and to induce the structural transition. A local transition induced by the force of the tip is accompanied by local rehybridization from an sp^2 -bonded to an sp^3 -bonded local structure. Density functional theory (DFT) predicts that a repulsive threshold of ≈ 13 nN, followed by a force reduction by ≈ 4 nN is overcome when inducing the graphite-diamond transition. The experimental observation of the third harmonic with a magnitude of about 200 fm fits well to overcoming a force barrier of $F_{barrier} \approx 5$ nN, followed by a force reduction by $-F_{barrier}$ and an upswing by $F_{barrier}$ for decreasing distances. Experimental evidence for this transition is provided by the emergence of third harmonics in the cantilever oscillation when the laterally flexible CO terminated tip exerts a large repulsive force. Probing the sample with rigid CuOx tips in the strong repulsive regime shows a strong difference in the yielding of the A versus B sites to the pressure of the tip. The large repulsive overall force of ≈ 10 nN is only compatible with the experimental data if one assumes that the repulsive force acting on the tip when inducing the transition is compensated by a heavily increased van-der-Waals attraction of the tip due to form fitting of tip and sample by local indentation. The experiment also shows that atomic force microscopy allows to perform high pressure physics on the atomic scale.

PACS numbers: Valid PACS appear here

*CONTENTS***Contents**

1	Diamond versus graphite and transitions	3
2	Density functional theory calculations on the effect of a high load of an atomic contact to bilayer graphene on SiC	4
3	Experimental setup	9
3.1	Scanning probe microscopy	9
3.2	Experimental observables	9
3.3	Sample preparation	12
4	Experimental data	12
4.1	AFM with inert trimer tips and CO terminated tips	12
4.2	Constant height data sets recorded with a CO terminated tip	17
4.3	Interpretation of the constant height data	19
4.3.1	Calculation of STM data for graphene with CO tips	19
4.3.2	Simulating frequency shift data with the probe particle model	20
4.3.3	CO bending leads to crossover in force versus distance spectra	22
4.3.4	The emergence of higher harmonics for close distances	23
4.4	Distance spectra	26
5	Images of graphene using CuOx tips	27
6	Images of graphene under weak repulsive forces for CO-terminated and CuOx tips	28
7	Summary	28
8	Appendix	31
8.1	Combined STM and AFM with reactive single atom metal tips	31
8.2	Correction of CO bending	34
8.3	Higher harmonics of a different order and illustration of higher harmonics generation	34
8.4	Examples of imaging graphene with CO tips on other substrates	35
9	Remarks about the time sequence of these data	35
10	Acknowledgments	37

CONTENTS

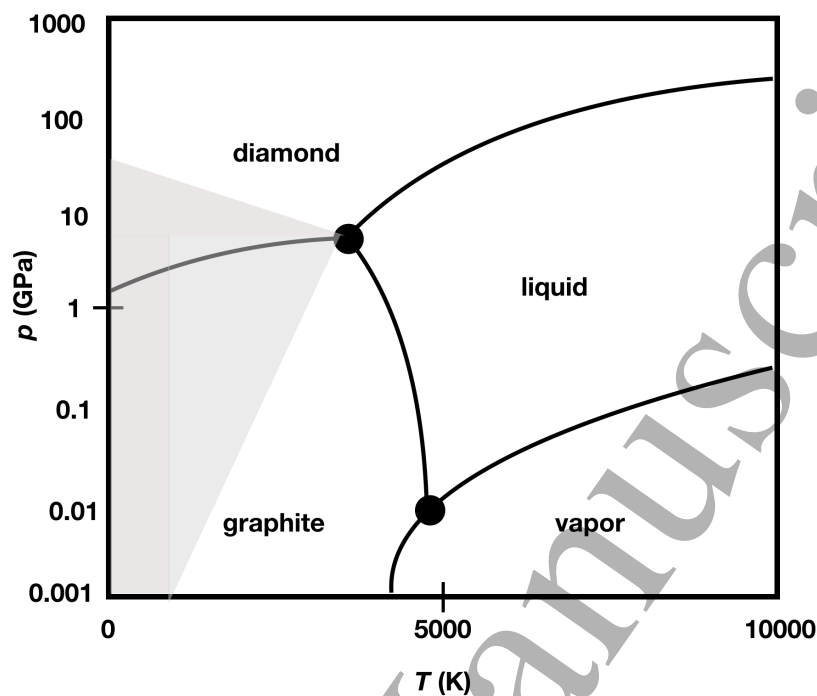


Figure 1. Schematic phase diagram of carbon after data from Fig. 4 in [4]. The phase boundary between graphite and diamond for temperatures below 4000 K is not a sharp line but a wide coexistence area indicated by the zone shaded in gray.

1. Diamond versus graphite and transitions

“Deep within the earth diamonds grow. Diamonds the size of footballs, diamonds the size of watermelons – countless billions of tons of diamonds wait for eternity a hundred miles beyond our reach.” – this is the opening sentence in chapter I of Robert M. Hazen’s stunning account on the history of making artificial diamond [1] as reported in [2, 3]. The pressure in the mantle of the earth at a depth of 100 miles is about 10 GPa, and fractions of these football-sized diamonds can survive the trip to the earth’s surface only when transported by volcanic eruptions of great speed [1]. Most of these “watermelon-sized diamonds” emerge on the surface of the earth as graphite, the stable phase of carbon for pressures below about 2 GPa at low temperatures. A schematic phase diagram that shows the large coexistence area shaded in gray - both graphite and diamond are stable in ambient conditions, is presented in Fig. 1 after data from [4].

Graphite and diamond coexist over a large range of pressures and temperatures, indicated by the gray zone in the phase diagram of Figure 1 created with data from [1, 4]. Therefore, transforming graphite to synthetic diamond requires to push the material through this wide gray area utilizing massive and ingenious reactor cells that sustain a pressure on the order of 10 GPa at temperatures around 2000 K [1]. At ambient conditions, graphite is slightly more stable than diamond by about 3 kJ/mol or 30 meV per atom [5, 6], while at 0 K, diamond appears to be more stable than graphite by an

CONTENTS

even smaller energy [5]. The two phases separated by a barrier of about 0.5 eV per atom (Fig. 4a in [6]), and it was already found in 1962 [7] that diamond starts to transform into graphite both inside a crystal as well as on the surface by heating it in a vacuum to 1700 °C. This temperature corresponds to $k_B \cdot T \approx 172$ meV. While this energy is significantly below the barrier of 0.5 eV, the attempt frequency is expected to be around the frequency of optical phonons in diamond of about 40 THz, yielding a significant transition rate even for thermal energies below the barrier.

Recently, the tip of an atomic force microscope (AFM) [8] was used to induce a transition of bilayer graphene to diamond [9] or 2D boron nitride to a diamond-like structure by AFM [10]. These nano indentation experiments applied loads of up to 100 nN to a blunt spherical Si probe with, compared to atomic dimensions, a large contact area, which lead to these sp^2 type bonding to diamond-like sp^3 type bonding conversions [9]. Recently, such transitions have also been observed in boron nitrate on a SiO_2 substrate [10].

Because of the increasing relative stability of matter with decreasing size, one might even expect that it is easier to induce this transition with an atomically sharp tip. The strength of materials with a given cross section is typically much smaller than the strength of an individual bond times the number of bonds that bridge the cross section. The reason is the slipping of bonds one by one under the influence of shear forces (see e.g. Vol. II, chapter 30-7 in [11]).

The tip of an AFM can create enormous pressure when its repulsive force is confined on a single unit cell. A surface unit cell in graphite spans an area of $246 \text{ pm} \times 246 \text{ pm} \times \sin(\pi/3)$ and forms a honeycomb mesh with two basis atoms spaced at 142 pm. In AFM, forces between the front atom of the tip and the sample atom next to it can reach forces in the nanonewton regime without creating damage. A small repulsive force of merely 525 pN over one unit cell already invokes a huge pressure of 10 GPa.

A transition of the bonding type between a CO terminated tip and a Fe adatom on Cu(111) has recently been observed [12]. In this experiment, approaching the CO terminated tip to the Fe adatom resulted first in a local van-der-Waals minimum of about -10 pN at a distance of 400 pm, followed by a repulsive barrier of about +20 pN at 300 pm ending in a weak covalent bond with an absolute minimum of about -400 pN at a distance of 260 pm. Here, we attempt to modify the bonding character between the graphene surface layer and the buffer layer underneath on the scale of a few atoms with an atomically sharp tip.

2. Density functional theory calculations on the effect of a high load of an atomic contact to bilayer graphene on SiC

The creation of diamond in pressure cells differs largely from exerting pressure by a single front atom of an AFM tip. Density functional theory (DFT) can simulate the effect of impinging an atomically sharp CO tip on bilayer graphene on SiC. For simplicity, we only consider the CO molecule pointing with the O atom towards the sample as the

CONTENTS

number of unit cells	surface vectors	$F_{rehybridization}$ eV/Å	$F_{rehybridization}$ nN	pressure GPa
1	1×1	1.33	2	41
4	2×2	4.7	7	36
12	$2\sqrt{3} \times 2\sqrt{3}$	8.0	13	20

Table 1. Rehybridization thresholds as a function of unit cell size.

AFM tip. DFT within the generalized gradient approximation of Perdew, Burke, and Ernzerhof [13], as implemented in the Fritz-Haber-Institute-aims code package [15] is used here to calculate the effect of a CO terminated tip that is located in the center of a graphene hexagon on SiC(0001). We build on a previous DFT study of this sample system by Nemeč et al. [14]. The calculations were performed at zero bias voltage and a temperature of 0 K.

Figure 2 shows the results of a DFT calculation where a CO terminated tip is placed above the center of a graphene hexagon and the repulsive force on the CO tip termination is plotted against the interlayer distance between the monolayer graphene and the carbon buffer layer for three different sizes of unit cells.

The black curve corresponds to a 1×1 structure where a CO terminated tip is placed over each unit cell as indicated in Figure 2 (b). The force starts at zero at the equilibrium interlayer distance of 335 pm and then rises sharply to a value of about 2 nN at a nearest inter-graphene-layer distance of 235 pm. The next stable data point is at about 160 pm, close to the bond length in diamond, where the force rises sharply again for even smaller distances.

The blue curve refers to a 2×2 structure, corresponding to one CO tip in four unit cells as depicted in Figure 2 (c). The force again starts at zero at the equilibrium interlayer distance of 335 pm and then rises even more sharply to a value of about 7 nN where it declines until the nearest inter-graphene-layer distance reaches 160 pm, again increasing profoundly upon further distance reduction.

Finally, the red curve refers to a $2\sqrt{3} \times 2\sqrt{3}$ structure, corresponding to one CO tip in twelve unit cells. Here, the force even rises up to a value of about 13 nN before it declines again until a distance of 150 pm. The calculated curve does not cover the even smaller distances that are expected to show another rising repulsive force.

It should be noted, however, to exert such a high force (pressure) from the CO tip, in our simulations, the CO molecule has to be fixed vertically in the simulation. Without doing so, the CO molecule will be tilted away from the upright position before reaching such a high force. How the CO tip might be stabilized under the experimental condition will be discussed further below.

While the increase of unit cell sizes has led to increased force thresholds that induce the graphite to diamond transition, we expect that the force threshold saturates for large enough unit cells. Experimental and theoretical evidence shows that when graphene is

CONTENTS

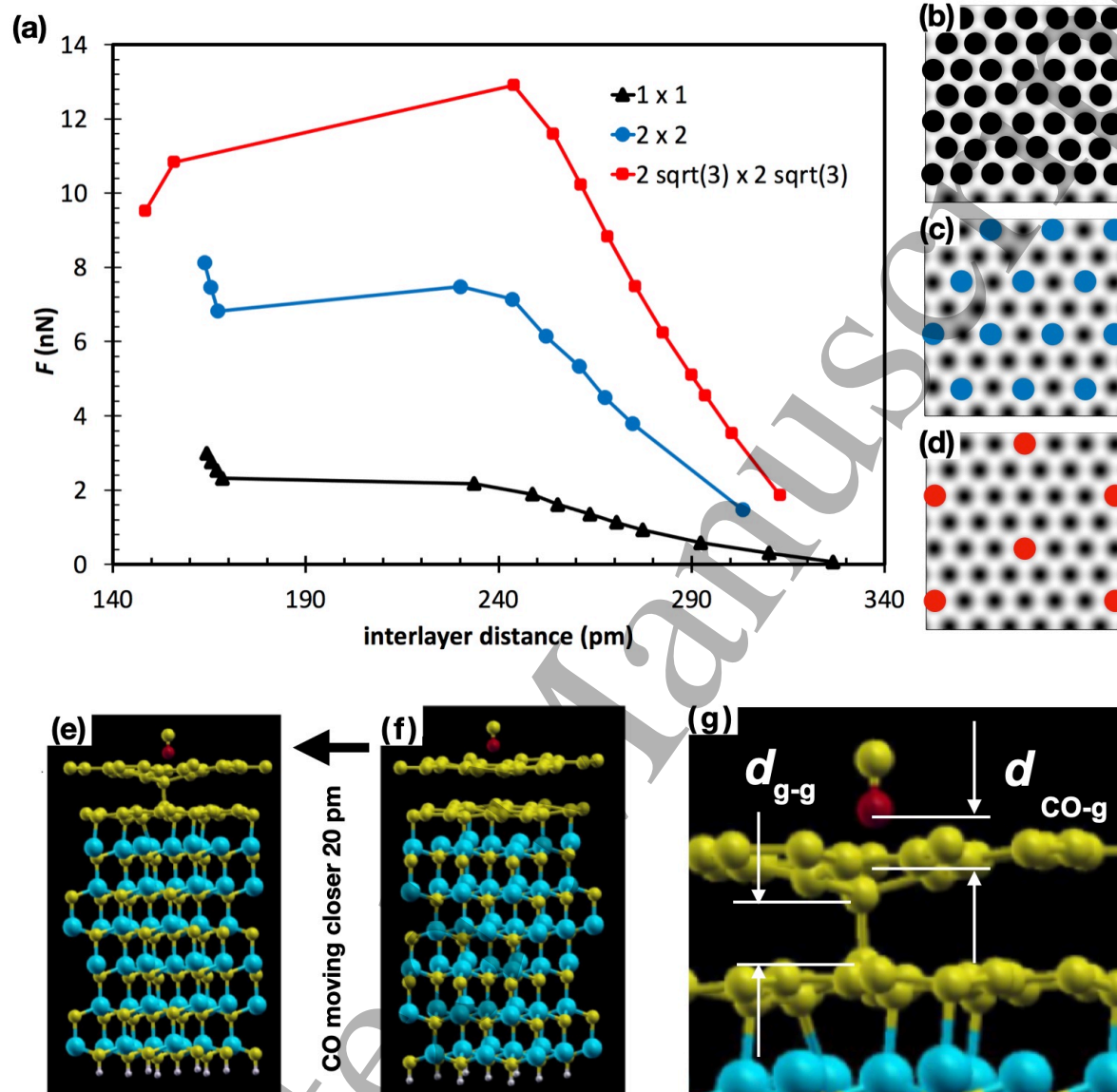


Figure 2. A CO molecule is located over the hollow site (center) of a hexagonal unit cell of bilayer graphene on SiC. (a) DFT calculated force spectra that occur during rehybridization for monolayer graphene on a graphene buffer layer on SiC as a function of interlayer distance d_{g-g} as illustrated in (g). Three different sizes of unit cells are shown: (b) in the black curve, a CO molecule presses on every unit cell (1×1 structure), (c) the blue curve refers to one CO molecule for four unit cells (2×2 structure), and (d) finally one CO molecule for 12 unit cells ($2\sqrt{3} \times 2\sqrt{3}$ structure). (e) The slab is shown under high load where the transition has taken place. (f) Same slab with CO 20 pm further away. (g) Close up of the tip region of (e): The CO tip molecule is centered over the carbon hexagon, and one of the three A sites of the graphene surface layer moves significantly towards the buffer layer and forms a covalent bond with a A_{BL} atom.

1
2
3
4
5
6
7
8
9
10
11
12
13
14
15
16
17
18
19
20
21
22
23
24
25
26
27
28
29
30
31
32
33
34
35
36
37
38
39
40
41
42
43
44
45
46
47
48
49
50
51
52
53
54
55
56
57
58
59
60

CONTENTS

exposed to forces from the tip of a scanning probe microscope close by, the largest part of the bending occurs within nanometers from the tip [16].

Table 1 summarizes the results of Fig. 2 and lists the corresponding average pressures. As expected, the average pressure falls for larger unit cells. However, the calculated pressure where a transition occurs for the 1×1 structure at $T = 0$ K is at 41 GPa surprisingly high, given that the empirically found pressure needed for artificial diamond creation is about 10 GPa.

A possible reason for this discrepancy is provided by Grochala, who notes that thermal activation is important in particular when transforming graphite to diamond, “which results in immeasurably sluggish transformation at $T < 1000$ K even when the pressures involved are larger than necessary for transformation” (p. 3682 in [5]).

Although the sample is at a temperature of about 4 K in our experiment, it is conceivable that the oscillating motion of our tip with its amplitude of $A = 50$ pm shakes the lattice in a similar fashion as thermal excitation and thus helps the atoms to find their new equilibrium positions as the thermal motion at the high temperatures required in artificial diamond creation. One may argue that the oscillation of the cantilever is very slow in frequency (40 kHz) with respect to optical phonon frequencies (40 THz) and should therefore considered to be adiabatic. However, as we will see below, dissipation is observed in the experiment, proving that the oscillation of the tip to and from the sample is not a conservative process, but runs through a hysteresis loop as explained by Sasaki and Tsukada (Fig. 2 in [17]). The jumps at the edges of the hysteresis loop are limited by phonon dynamics and are therefore very similar to direct thermal excitation.

The equipartition theorem predicts that the thermal motion of an atom with mass m_a held by bonds with an atomic stiffness k_{bond} has a thermally excited motion δx in every spatial degree of freedom of

$$\frac{1}{2}k_{bond} \langle \delta x^2 \rangle = \frac{1}{2}k_B T, \quad (1)$$

where $k_B = 1.38 \cdot 10^{-23}$ J/K is Boltzmann’s constant. At a temperature of $T \approx 2000$ K and an estimated value for $k_{bond} \approx 300$ N/m, a total thermal motion of about 10 pm is estimated. This motion will certainly help to find the new local energy minimum that the diamond structure provides under high pressure.

Figure 3 (a) displays the bonding energies of graphene and diamond after Figure 4a of [6]. Note that the bonding energy of graphite and graphene are very similar, the one of graphite is lower by the exfoliation energy. This energy is required to release the van-der-Waals bond between two layers and amounts to approximately 30 meV per atom. Chemical bonds are typically two orders of magnitude larger.

The minimum for graphene is located at a distance of 142 pm, the bonding distance of the sp^2 bonds in planar graphene. For diamond, the minimum is at 155 pm, the bonding distance of the sp^3 bonds diamond.

In bilayer graphene, the layers are spaced by 330 pm. Figure 3 (a) plots the bonding energy of graphene and diamond as a function of the bonding distance, where the minimum of the graphene curve is at the bonding length of 142 pm and the minimum

CONTENTS

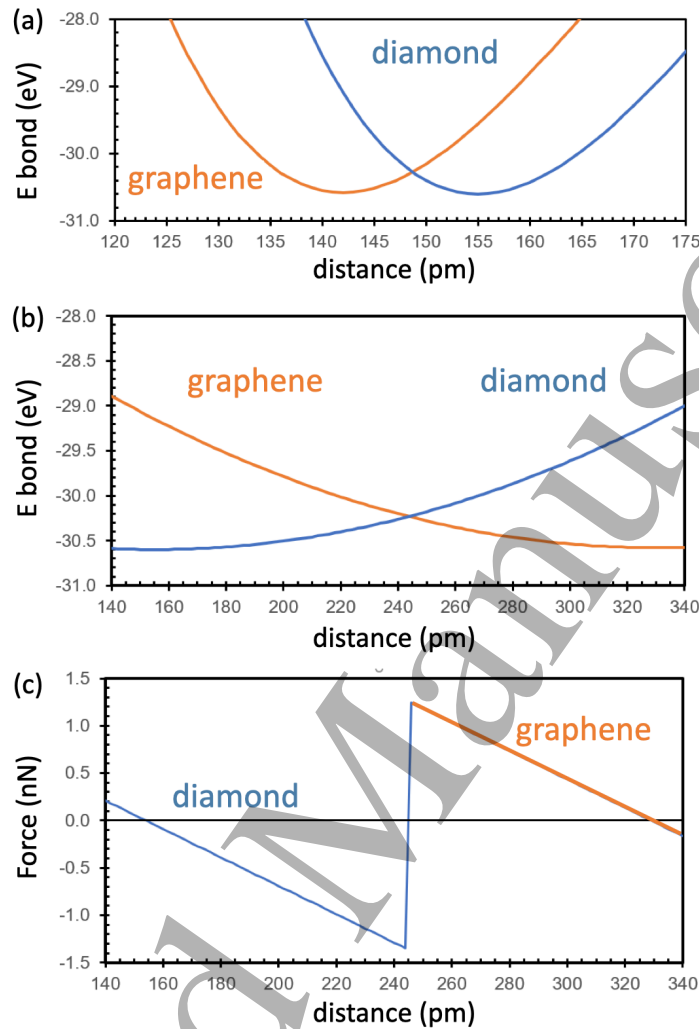


Figure 3. (a) Bonding energies of graphene and diamond after Figure 4a of [6], showing the energetic minima at the bond lengths of graphene at 142 pm and diamond at 155 pm. (b) Energy profile of (a) rescaled to the vertical bond length of bilayer graphene of about 330 pm. (c) Force in vertical direction derived from (b). Note that (b) and (c) are only qualitative derivations from graphene and diamond data.

for diamond at 155 pm. Bilayer graphene has a vertical bonding distance of 330 pm. When rescaling the energy profile of Figure 3 (a) to the vertical dimension, we again have a local minimum of at 155 pm for diamond and one at 330 pm for bilayer graphene, obtaining Fig.3 (b). We can now take the derivative with respect to distance and obtain the force profile in 3 (c). Note that this procedure is not exact, it is only an approximative method to obtain a qualitative idea for a force versus distance curve in the vertical direction.

CONTENTS

3. Experimental setup

3.1. Scanning probe microscopy

We use combined STM and AFM to probe the charge density at the Fermi level by STM and the bonding properties of the sample to the various tips by AFM in a single experiment, utilizing a combined scanning tunneling and atomic force microscope operating in ultrahigh vacuum at a temperature of 4.4 K (LT-SPM by ScientaOmicron Nanotechnology, Taunusstein, Germany) employing qPlus force sensors [18, 19].

The data with CO tip termination were recorded with a sensor type S1.0 (see table I in [19] for detailed specifications) with a stiffness of $k = 1\,800\text{ N/m}$, an eigenfrequency of $f_0 = 26\,660.3\text{ Hz}$, an amplitude of $A = 50\text{ pm}$ and a quality factor of $Q = 42\,844$. The bias voltage was 0.1 V unless noted otherwise. The data with the CuOx tip were recorded with a sensor type M4 (table I in [19]) with $k = 1\,850\text{ N/m}$, $f_0 = 46\,597.3\text{ Hz}$, $A = 50\text{ pm}$ and $Q = 482\,321$.

The instrument is controlled by a Nanonis BP4 SPM electronics with an OC4 oscillation controller (Specs-Nanonis, Zurich, Switzerland) and the higher harmonics were detected with a HF2 Lock-in amplifier (Zurich Instruments, Zurich, Switzerland).

The tip was made of etched tungsten, cleaned by *in situ* field emission and formed by poking into a Cu(111) surface followed by checking the apex of the tip by COFI (carbon monoxide front atom identification). The COFI method for tip characterization uses a CO molecule adsorbed on Cu(111) [20, 21] or Pt(111) [22] that images the front section of the tip as illustrated in Fig. 21 (c). The COFI method creates a portrait of the tip that shows if a tip has a single atom, a dimer, trimer [20, 21, 22] or even a flake of graphene as in Fig. 21 at the front.

Here, we use single atom metal tips, trimer metal tips, single atom tips terminated by a CO molecule [23, 24] and copper oxide (CuOx) tips [25, 26, 27] that have all been characterized by COFI. Information on the preparation of CO terminated tips and CuOx tips can be found in [21] and [26], respectively.

3.2. Experimental observables

We record a set of seven observables in each image in forward and backward scan direction that are used to create images and to analyze the interaction in detail:

- (i) A tunneling current $\langle I \rangle$, where the averaging occurs over many oscillation cycles of the sensor that covers a vertical distance of twice the oscillation amplitude A . The tunneling current has an exponential distance dependence with gap width z given by

$$I(z) = G_0 V_{bias} \exp(-z\kappa_I) \quad (2)$$

where G_0 refers to the conductance quantum $G_0 = 2e^2/h \approx 1/(12906\ \Omega)$, $e = 1.6022 \times 10^{-19}\text{ C}$ is the elementary charge of the electron and $h = 6.626 \times 10^{-34}\text{ Js}$

CONTENTS

10

is Planck's constant. The decay constant κ_I is given by

$$\kappa_I = \frac{\sqrt{2m_e\Phi}}{\hbar} \quad (3)$$

with electron mass $m_e = 9.11 \times 10^{-31}$ kg and work function Φ as explained in [28]. A typical decay rate of the tunneling current with distance is a reduction to 1/10 for every distance increase of 100 pm or 1 Å [28].

- (ii) An averaged gradient of the tip sample force is measured by frequency modulation (FM) - AFM [29]. The frequency shift is given by $\Delta f = f - f_0$, where f is the actual oscillation frequency and the frequency shift $\Delta f = f_0 \cdot \langle k_{ts} \rangle / (2k)$ [30], caused by the tip sample force F_{ts} or more precisely an average over its gradient $k_{ts} = -\partial F_{ts}(z) / \partial z$ as shown in equation 4.

If the perturbation of the tip-sample force to an oscillating cantilever is weak, the frequency shift is given by

$$\Delta f(z) = \frac{f_0}{k\pi} \int_{-1}^1 k_{ts}(z + uA) \sqrt{1 - u^2} du \quad (4)$$

that shows that the average tip sample force gradient $\langle k_{ts} \rangle$ is computed by a convolution of k_{ts} over a semicircular weight function with a radius of the oscillation amplitude A [31]. Experimental noise on this frequency shift measurement can be kept low by experimental precautions and choosing a low acquisition bandwidth [19, 32]. Note that all distance data z have an arbitrary offset and $z = 0$ refers to the minimal distance of the experimental data.

The tip sample force F_{ts} can be recovered from the frequency shift spectrum, using e.g. the Sader-Jarvis formula [33] or the Matrix approach [31]. Recently, it was discovered that the presence of inflection points in the force curve requires to meet certain conditions regarding the oscillation amplitude A in order to obtain a well-posed force deconvolution [34, 35, 36]. The deconvolutions performed here have been verified to be well-posed and thus valid.

- (iii) Higher harmonic amplitudes a_n of order n from 2 to 5, where the deflection q of the cantilever is expressed as a Fourier series with $q(t) = \sum_{n=0}^{\infty} a_n \cdot \cos(n2\pi ft)$ with $a_1 = A = 50$ pm and $f = f_0 + \Delta f$. These higher harmonics arise when the tip-sample force F_{ts} is not strictly linear with distance z . Dürig [37] showed that the n -th harmonic a_n can be expressed as a convolution of the force curve with a Chebyshev function and proposed that the full force curve, separated into conservative and dissipative components, can be recovered from the amplitudes and phases of the higher harmonics in FM-AFM. Kawai et al. have used this method to experimentally verify the force field over a KBr(001) surface [38].

The calculation of the higher harmonics as outlined in section VII A.1 of reference [39], and a_n can be expressed in terms of the Fourier components of the tip-sample force F_{ts} for $n \neq 1$:

$$a_n = \frac{1}{1 - n^2} \frac{1}{\pi(1 + \delta_{n0})} \frac{1}{k} \int_0^{2\pi} F_{ts}(z + A \cos(\phi)) \cos(n\phi) d\phi. \quad (5)$$

CONTENTS

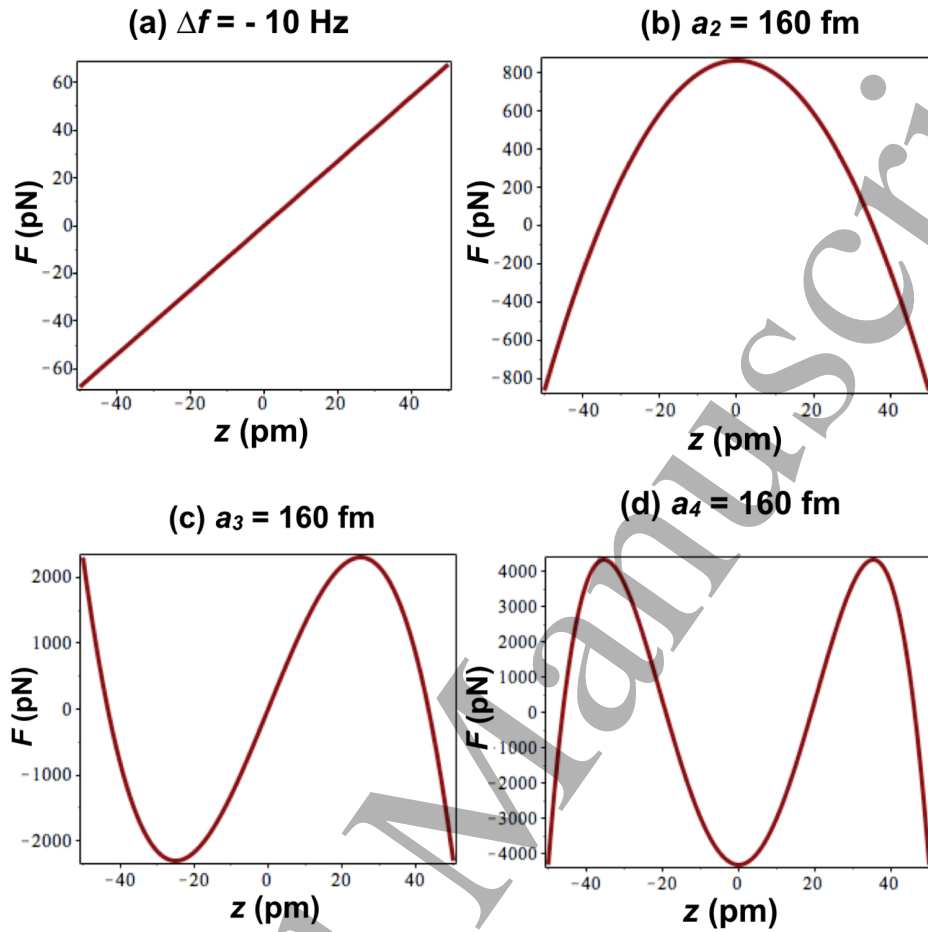


Figure 4. Force versus distance curves over a z -scale of $100 \text{ pm} = 2A$ that are required to (a) generate a frequency shift of -10 Hz ; (b) a second harmonic $a_2 = 160 \text{ fm}$; (c) a third harmonic $a_3 = 160 \text{ fm}$ and (d) a fourth harmonic $a_4 = 160 \text{ fm}$.

The constant cantilever deflection a_0 thus is given by the average force divided by the spring constant $a_0 = \langle F_{ts} \rangle / k$, the amplitude at the fundamental oscillation frequency is $a_1 = A$ and for $n \geq 2$, we find

$$a_n = \frac{1}{1 - n^2} \frac{\hat{F}_{ts}(n\omega)}{k} \quad (6)$$

where $\hat{F}_{ts}(n\omega)$ is the Fourier component of the time dependent tip-sample force $F_{ts}(z + A \cos(\omega t))$ at angular frequency $n\omega$. For example, for $F_{ts}(z_0 + z) = -1.8 \text{ nN} \cdot \cos(2 \arccos(z/A))$ for $-A \leq z \leq A$, we find $a_2 = 333 \text{ fm}$ for a sensor stiffness of $k = 1800 \text{ N/m}$, while for $F_{ts}(z - z_0) = -1.8 \text{ nN} \cdot \cos(3 \arccos(z/A))$ for $-A \leq z \leq A$, we find $a_3 = 125 \text{ fm}$. Figure 4 displays force versus distance laws that are needed to generate a frequency shift of -10 Hz and higher harmonics of order 2, 3 and 4 with a magnitude of 160 fm . It is noted, that measurable frequency shifts require only small force variations, while higher harmonics that rise above the experimental noise level require quite large force variations. Mathematically, the

CONTENTS

12

n -th harmonic a_n can also be evaluated as a convolution of the n -th force gradient with bell-shaped weight functions as presented in [40].

- (iv) A drive signal V_{exc} that excites and maintains a constant oscillation amplitude A of the cantilever. Dissipative tip-sample interactions lead to an increase of the drive signal from V_{exc} to V'_{exc} . The dissipation per oscillation cycle ΔE_{ts} is given by [19]:

$$\Delta E_{ts} = \frac{\pi k A^2}{Q} \left(\frac{V'_{exc}}{V_{exc}} - 1 \right). \quad (7)$$

3.3. Sample preparation

To study the graphite to diamond transition induced by an AFM, graphene [41, 42] on a carbon buffer layer as in graphene grown on the Si side of silicon carbide [43] is an ideal sample, because the graphene top layer is stacked in an AB order [44] on top of the rigid SiC substrate. Graphene samples were produced by the group of Thomas Seyller by heating silicon carbide in an Argon atmosphere [43]. The samples were inserted into a vacuum chamber, heated in situ for cleaning and transferred into the low temperature scanning probe microscope. This preparation led to a flat sample with large areas of single layer graphene as illustrated in Figure 5. Two more variations of graphene have been imaged here: a) the surface layer of highly oriented pyrolytic graphite (HOPG) that was prepared by cleaving with the scotch tape cleaving technique and b) monolayer graphene flakes that are known to form from traces of carbon that are naturally dissolved in copper. Heating a Cu (110) crystal to approximately 800 K leads to migration of carbon to the surface and subsequent graphene formation.

4. Experimental data

Figure 5 (a,b,c) shows the structure of monolayer graphene on a buffer layer on top of a SiC crystal. The stacking of graphene over the buffer layer leads to two inequivalent lattice sites A and B within the hexagonal unit cell (Fig. 5 (a)), where A sits on top of an A_{BL} site on the buffer layer, while B is over a hollow site of the buffer layer (BL). The B_{BL} site on the buffer layer is underneath a hollow site of the surface graphene layer.

The SiC crystal is atomically flat with terraces with a width of a few μm separated by atomic steps and covered predominantly by monolayer graphene with patches of bi- and tri-layer graphene (Fig. 5 (b)). Topographic STM images in Fig. 5(d,e) show the typical 6×6 domains and $6\sqrt{3} \times 6\sqrt{3}$ unit cells.

4.1. AFM with inert trimer tips and CO terminated tips

Figure 6 shows simulations and experimental STM and AFM data for a metal tip (left two columns) and for a CO terminated tip (right two columns), respectively. The STM contrast is calculated using the Tersoff-Hamann approximation [45] for s-type tips in (a) and considering the p_x/p_y symmetry [46, 47] of the CO terminated tip in (b), see

CONTENTS

13

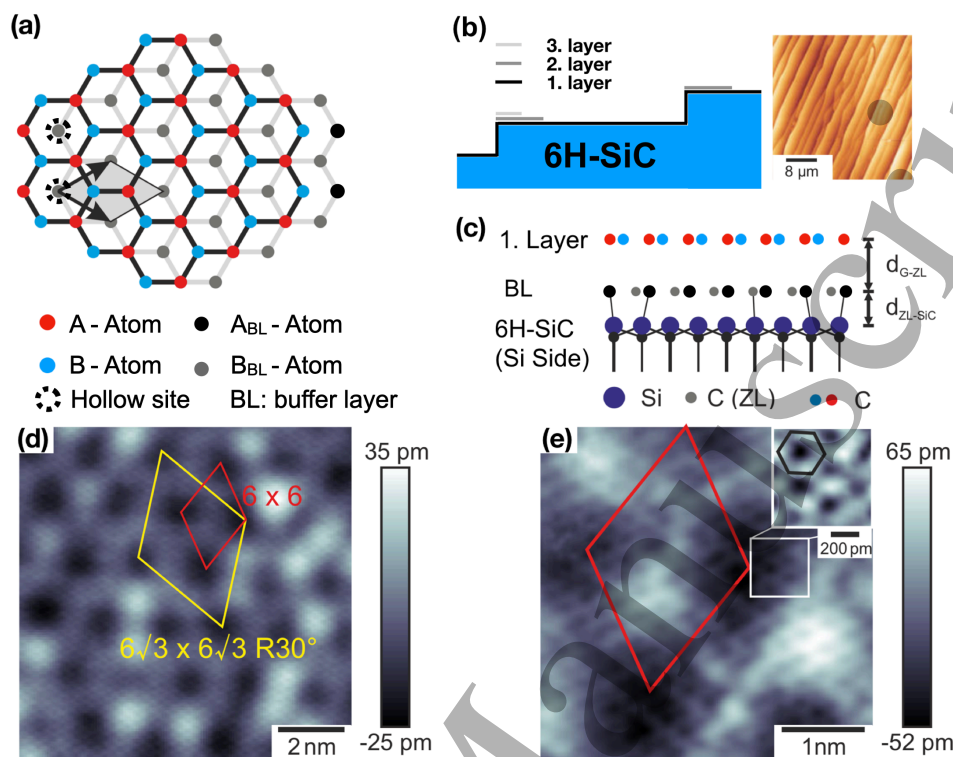


Figure 5. (a) Schematic view of monolayer graphene on a buffer layer on top of a SiC crystal. The A sites in the graphene layer are above an atom of the buffer layer, while the B sites are above a hollow site of the buffer layer. (b) Schematic view of SiC substrate with atomic steps, covered by a buffer layer and 1, 2 and 3 layers of graphene. The terraces have a width of a few micrometers as shown in the STM image to the right. (c) Side view of the structure of monolayer graphene on the buffer layer on top of the Si side of SiC. (d) Topographic STM image of the graphene monolayer with its 6×6 and $6\sqrt{3} \times 6\sqrt{3}$ unit cells. (e) Topographic STM image of the graphene monolayer at higher magnification with inset on atomic scale.

Figure 9. Carbon atoms appear bright in the STM channel for metal tips (Fig. 6 (a,c)) and dark for CO tips (Fig. 6 (b,d)).

The conductance of undoped graphene is very poor as the density of states at the Fermi level is zero because of the Dirac cone electronic structure. However, the Fermi level is pinned at 400 meV for epitaxial graphene on the silicon side of silicon carbide such that even for small tunneling bias, a sizeable tunneling current can flow.

Forces between metal tips and the carbon atoms are attractive [48], therefore the calculated AFM image in Fig. 6 (a) and the experimental AFM image in Fig. 6 (d) show the carbon sites as minima. Figure 6 (b) is a simulation of STM and AFM data for a CO terminated tip. The calculated AFM images use the total charge density as a measure of the attractive force for metal atoms [48] and the repulsive force in case of graphene and CO tips [49].

Figure 6 (c) shows the experimental STM (left) and AFM (right) images of graphene using a trimer tip with the COFI portrait [20, 21, 50] of the tip in the inset of the

CONTENTS

14

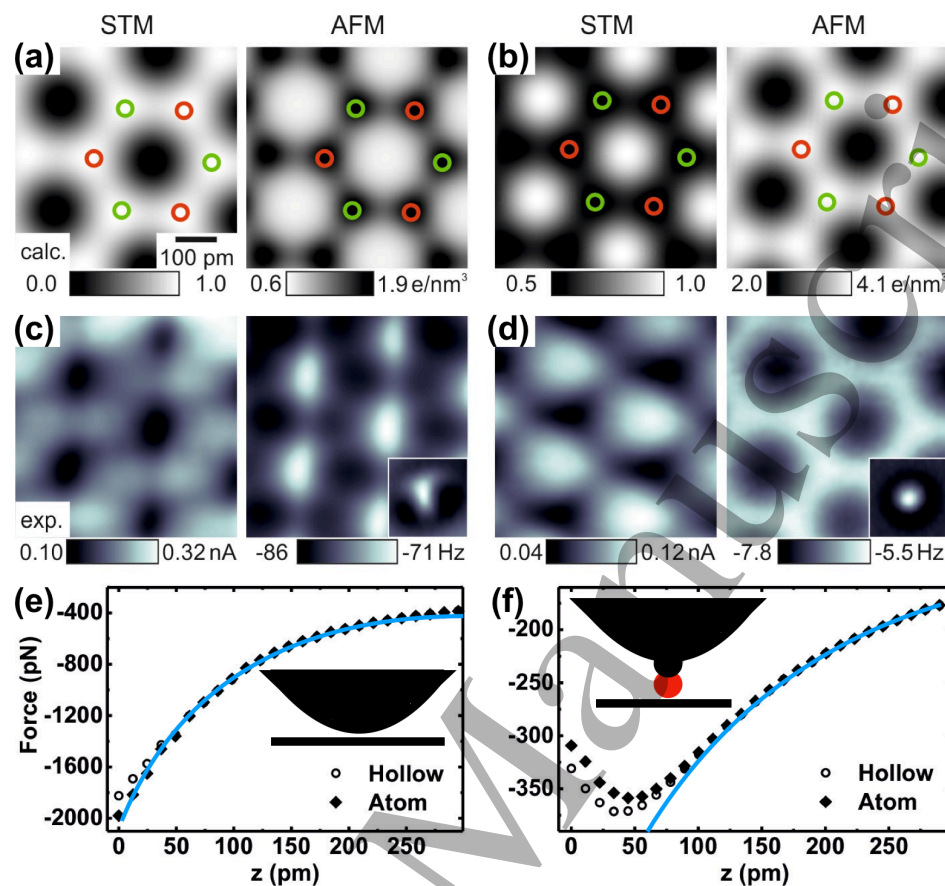


Figure 6. Top row: (a) Left: Calculated STM image of graphene for a metal tip (charge density at the Fermi level, arbitrary units). Right: Calculated AFM image for a metal tip (given by total charge density in electrons per nm³, scale inverted). (b) Calculated STM image of graphene for a CO terminated tip (see Fig. 9 for an explanation, arbitrary units). Right: Calculated AFM image of graphene for a CO terminated tip (given by the total charge density expressed in electrons per nm³). (c) Experimental constant height STM image (left), simultaneously recorded with the corresponding AFM image on the right recorded with a metal tip. (d) Experimental constant height STM image (left), simultaneously recorded with the corresponding AFM image on the right recorded with a CO terminated tip. Insets show COFI images of these tips, verifying that a metallic trimer tip was used in (c) and a CO-terminated tip was used in (d). Bottom row: Force versus distance curves for the metallic trimer tip (e) and for the CO terminated tip (f). The insets show how the CO tip termination acts as a spacer, leading to only 1/5 of the vdW force in (f) compared to the trimer metal tip in (e).

CONTENTS

15

AFM data. The data shows that the trimer tip is indeed sufficiently inert to allow for atomic imaging in both STM and AFM modes. Although graphite is a lubricant and two graphene layers even show superlubricity [51], single atom metal tips form strong bonds to graphene [48]. The formation of a strong bond between the metal tip and the graphene leads to rehybridization of the sp^2 bonds in graphene to sp^3 bonds [52], resulting in unstable imaging and even to ripping the graphene layer off the surface and covering the tip (see experimental data in the appendix in section 8.1). Just as metal trimers on surfaces are much less reactive than monomers [53], trimer tips show much less short range attraction than single atom metal tips and thus enable stable imaging of graphene on SiC. The AFM image appears inverted with respect to the STM image, as the carbon atoms attract the reactive tip and attraction leads to a more negative frequency shift that is displayed dark.

Figure 6 (d) displays the experimental STM (left) and AFM (right) images of graphene using a CO terminated tip, again with the COFI portrait of the tip in the inset of the AFM data. The STM data shows maxima at the centers of the hexagons as discussed below while the AFM data shows an image of graphene that resembles the total charge density of graphene as expected for a tip that interacts by Pauli repulsion.

Overall, the agreement between calculated data in the top row and experimental data in the middle row of Figure 6 is very good, deviations can be explained by the unavoidable asymmetries of the trimer tip and the tilt of the CO tip as discussed in the appendix (Fig. 9).

Figure 6 (e,f) display the force versus distance curves for the two different tips. Figure 6 (e) shows a strong attraction between a Cu trimer tip and graphene that reaches 2 nN where the largest contribution is due to van-der-Waals interaction. The strong attraction between graphene and metal tips is a serious challenge for imaging graphene particularly for single atom metal tips (see Fig. 9 in the appendix). Even for trimer tips, it is possible that graphene sticks stronger to the tip than to the buffer layer in SiC graphene. To maintain the integrity of the tip, we did not go close enough to probe the force minimum when recording Fig. 6 (e).

Figure 6 (f) shows a force versus distance curve that is observed for CO terminated tips. The maximal attraction reaches only 200 pN before repulsion between the CO terminated tip and graphene becomes noticeable. The AFM image in Fig. 6 (d) right displays an experimental image of graphene that looks very similar to the calculated total charge density of graphene as, e.g. shown in Fig. 3D of [54]. The shallow increase of the magnitude of the attractive force with decreasing distance, indicated by blue lines in Figs. 6 (e,f) points to its van-der-Waals origin. Highly reactive tips that interact by covalent chemical bonding would show an exponential increase of force with decreasing distance $F \propto \exp(-z/\lambda)$ with $\lambda \approx 50$ pm. Thus, the CO terminated tips that have proven to image organic molecules such as pentacene very well [24] are also suited well for imaging graphene.

Both force spectra are dominated by van-der-Waals forces (vdW). The vdW force

CONTENTS

16

between a sphere of radius R and a flat surface at distance z is given by [55]:

$$F_{vdW\ sphere}(z) = -\frac{A_H R}{6z^2}, \quad (8)$$

where A_H is the Hamaker constant which has a magnitude of about 1 eV for many combinations of solids [55]. A somewhat weaker distance dependence $\propto 1/z$ results for conical and pyramidal tips, where the vdW force for a conical tip with full angle α is given by [30]:

$$F_{vdW\ cone}(z) = -\frac{A_H \tan^2(\alpha/2)}{6z}, \quad (9)$$

For spherical and conical tips, the vdW force diverges for $z \rightarrow 0$. However, z cannot reach zero as it refers to the distance between the center of the front atom of the tip and the plane connecting the atomic nuclei of the surface layers, yielding a minimal value for z of about 200 pm. For blunt metal tips, e.g. a spherical tip with a radius of $R = 30$ nm or a conical tip with an opening angle of 170° , equations 8 and 9 yield a maximal vdW attraction of $F_{vdW}(z = 200\text{ pm}) \approx -20$ nN for $A_H = 1$ eV.

The force spectra in Figure 6 (e,f) reveal that the difference in short range force is about 200 pN between the hollow and the atomic sites for metallic trimer tips in (e), thus we conclude that the 2 nN attraction is mainly due to van-der-Waals forces. For CO terminated tips, the van-der-Waals forces are much smaller as the CO molecule acts like a separator that keeps the blunt metal tip further away from the flat sample. For the CO terminated tip, the hollow- and atom sites are barely distinguishable in the force spectra for distances of $z > 75$ pm, merging into a difference of about 20 pN for smaller distances once the Pauli repulsion is in effect.

Experimentally, we can only measure the total tip-sample force F_{ts} by AFM, with

$$F_{ts} = F_{front\ atom} + F_{background}, \quad (10)$$

where the background force usually has a long range and is mainly due to vdW forces F_{vdW} , unless a large bias voltage is applied that would add electrostatic long range forces. Hence, it is not possible to separate the long-range van-der-Waals (vdW) part from the short range interactions that originate from the front atom of the tip. When studying individual adatoms, the on-off technique as introduced in [56] can be used. In this technique, the short-range force is given by the difference between the tip-sample force spectrum over the adatom and the force spectrum on a flat section of the sample nearby [56]. However, this technique is not applicable for flat surfaces, where the vdW contribution has to be guessed from the force characteristics before making contact (blue lines in Figs. 6 (e,f)).

Because of the divergence of the vdW force for small distances, the estimated vdW contribution can be grossly in error for small distances as will be discussed further below. Figure 7 illustrates where a relatively small total tip-sample force F_{ts} is composed of a strong attractive background force $F_{background} = F_{vdW}$ and a repulsive force of the front atom $F_{front\ atom} = F_{CO}$.

CONTENTS

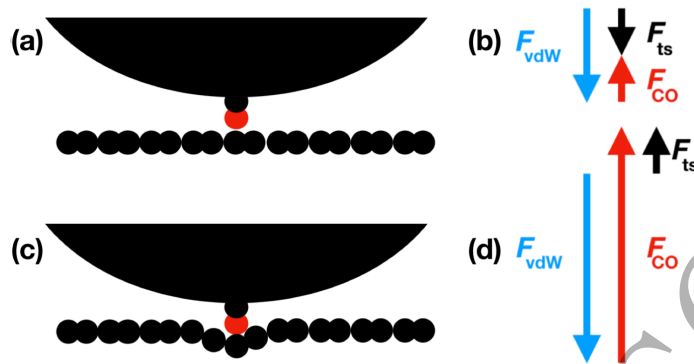


Figure 7. Proposed mechanism where the CO tip penetrates into the surface, leading to a very large van-der-Waals attraction F_{vdW} that is compensated by a large repulsive force F_{CO} , leading to a very small tip sample force F_{ts} .

Resolving graphene atomically by STM is straightforward [41] although the large forces between metallic STM tips and graphene can pull the graphene significantly out of equilibrium, as demonstrated in graphene drumheads [16]. Atomically resolved imaging by AFM with metallic tips is more challenging because the atomic spacing of 142 pm in graphene is only about half of the diameter of a metal tip atom. Simultaneously recorded STM and AFM images of graphite with tungsten tips have shown large lateral offsets between the current and force channels [54]. This lateral shift has been attributed to the large diameter of metal front atoms and their varying contributions to current and force of different atomic orbitals. For CO terminated tips, where the diameter of the O front atom is only 40% of the diameter of a metal atom, the registry between STM and AFM images is close to perfect as evident from Figures 6 (d) and 8.

Carbon monoxide terminated tips mounted on qPlus force sensors [19] are now a standard in AFM [57] after they have successfully been employed to image a pentacene molecule [24], other organic molecules [58, 59], graphene [49] and even molecules that extend into the third dimension normal to the surface [60]. Here, we find that while CO terminated probes truthfully image graphene, CO bending strongly affects the imaging process on the picometer scale.

4.2. Constant height data sets recorded with a CO terminated tip

Figure 8 shows the detailed contrast development in a set of six constant height images of tunneling current, frequency shift Δf and third harmonic amplitude a_3 . Distances get consecutively closer by decrements of 12 pm over a range of 60 pm, starting at (a) the largest distance of $z = 60$ pm, at (b) $z = 48$ pm etc.. The left column shows constant height images of the tunneling current, the center column is the frequency shift and the right column shows the third harmonic amplitude. The contrast in the tunneling current (left column) does not change significantly over the small distance variation of 60 pm from (a) to (f). The current maximum is located at the hollow site for all distances

CONTENTS

18

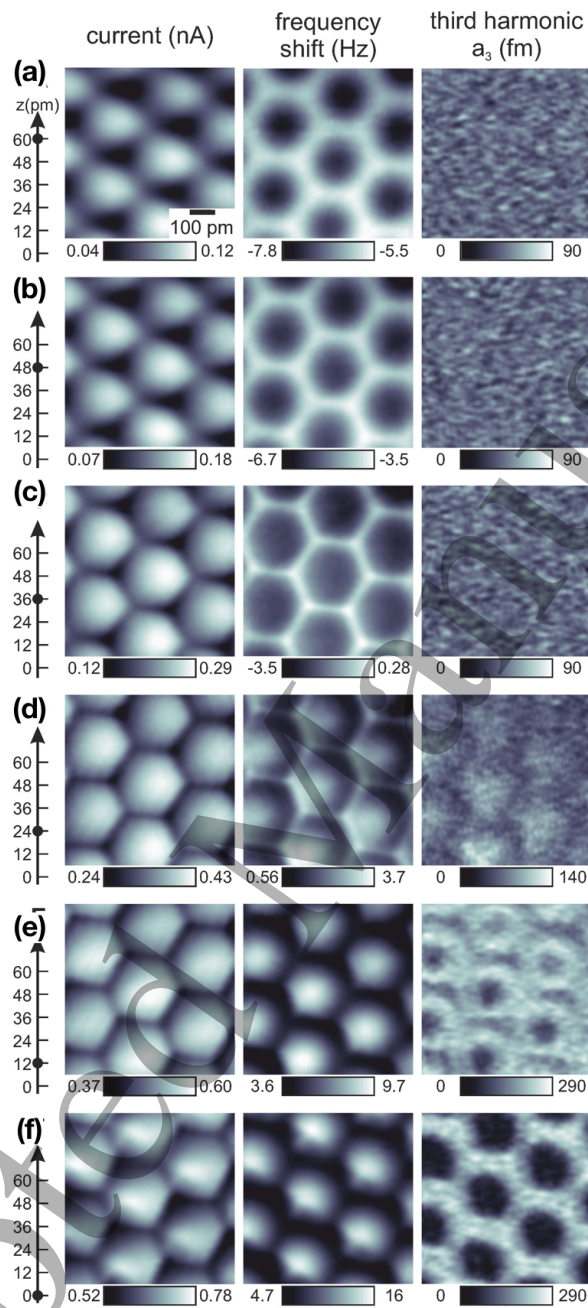


Figure 8. Set of constant-height images with tunneling current (left column), frequency shift (center) and third harmonic amplitude a_3 (right) over a height interval of 60 pm spaced by height decrements of 12 pm from (a) to (f). The tip bias voltage is 100 mV. The tunneling current is maximal over the hollow sites for all distances, caused by the p_x/p_y symmetry of the CO tip molecule (see Fig. 9).

CONTENTS

19

as predicted by the calculation presented in Fig. 6 (b) left and Fig. 9. The frequency shift produces an image of graphene similar to those obtained by transmission electron microscopy in Fig. 1 of [62] or as expected from the total charge density calculation in Fig. 1B at $z = 60$ pm. For smaller distances, the bonds appear to become sharper from Fig. 8 (a) center down to Fig. 8 (c) center at $z = 36$ pm. This sharpening effect has been observed in imaging organic molecules and explained already in 2012 [59], it is caused by CO bending.

At $z = 24$ pm, the contrast starts to invert and the third harmonic a_3 rises over its noise level at the hollow sites. Interestingly, of the six monitored higher harmonic amplitudes $a_2 - a_7$ [40], only a_3 rises above the noise level of about 100 fm (see Appendix with Fig. 23). At $z = 12$ pm, the contrast inversion is fully developed and the higher harmonics show a ring-like structure. The contrast inversion in the frequency shift as well as the rise of the higher harmonics starting at the hollow sites is explained in the following. When the tip is above a hollow site, the oxygen end of the CO molecule becomes trapped in the hollow site and cannot bend laterally.

Our hypothesis, supported by additional considerations further below, is as follows. When the local pressure reaches the value that is required to induce a carbon A atom from the graphene surface layer and a carbon A_{BL} atom from the underlying buffer layer to rehybridize from three sp^2 and one p_z orbital to four sp^3 orbitals, a strong anharmonic force component arises that leads to the rise of a_3 . Because the magnitude of a_3 is only on the order of 100 fm (only 2/1000 of the oscillation amplitude $A = a_1$), the Lock-in amplifier that measures a_3 has to be set to a fairly low bandwidth (here, 5 Hz) to obtain a good signal-to-noise ratio [61].

The frequency shift is more positive over the carbon atoms from frame (a) to (c), pointing to repulsive interactions while a contrast inversion starts to develop at (d) and is fully developed at (e) and (f). The contrast inversion is due to a lateral bending of the CO molecule. The third column, the third harmonic amplitude, becomes noticeable at the height where contrast inversion starts to emerge, explained in section 2. The apparent bond sharpening that becomes noticeable from (c) in the frequency shift channel is caused by CO bending as discussed in Fig. 22 and pertaining text.

4.3. Interpretation of the constant height data

4.3.1. Calculation of STM data for graphene with CO tips The calculation of the STM current for CO terminated tips with its, in comparison to metal tips, inverted contrast as well as the influence of a tilt of the CO tip out of an exact vertical orientation is addressed in Figure 9. In graphene, electron energies rise linearly with momentum at the Fermi energy rather than quadratic as in many metals and semiconductors [64]. The energy-momentum relation is then a Dirac cone, where the zero in energy corresponds to the Fermi wave vector k_F at the K-points. The STM current has been calculated assuming that the π^* orbital of the CO tip dominates the symmetry of the tip wave function. The derivative rule by Chen [46] yields a current proportional to the modulus

CONTENTS

20

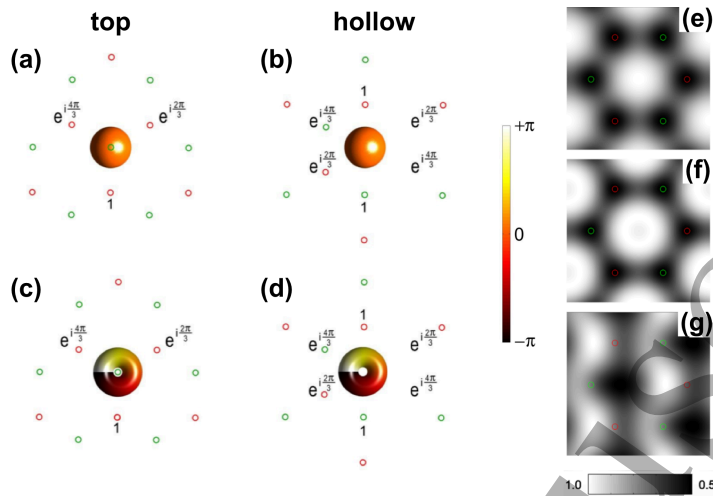


Figure 9. (a-d) Symmetry of the graphene Bloch states and the tip wave functions and phases for s -tips, p -tips (p is short for p_x/p_y here) for hollow and top positions. (f) Simulated constant-height STM image for a CO tip that bends laterally due to lateral forces as it occurs for small distances (see Fig. 6(d) left). (g) Simulated constant-height STM image for a CO tip that is slightly tilted by 8° in the horizontal direction to match the experimental data of Fig. 6.

of the gradient of the local density of states, as it was experimentally verified in single molecules [47]. The local density of states is calculated for graphene within a tight binding model, taking into account only p_z orbitals. The tilting of the molecule ensures contributions to the current proportional to the z -derivative, absent for a CO molecule standing perfectly perpendicular to the surface. The tilting angle has been taken as a fitting parameter.

Figure 9 (a-d) shows the Bloch states at the Fermi energy with Fermi wave vector at the K-points of the Fermi surface $\vec{k}_F = \frac{1}{3}(\vec{b}_1 - \vec{b}_2)$, where \vec{b}_1 and \vec{b}_2 denote the reciprocal unit vectors in \vec{k} -space [64]. For simplicity we have considered undoped graphene and the Bloch states associated to the Fermi wave vector $\vec{k}_F = 1/3\vec{b}_1 - 1/3\vec{b}_2$, where \vec{b}_1 and \vec{b}_2 denote the reciprocal unit vectors in \vec{k} -space. (e) Simulated constant-height STM image for a CO tip (p -tip). Thus, we find a maximal current in the center of the graphene hexagons and zero current at the atom positions as displayed in Figure 9 (e). The effect of the tip-sample forces on tilting the CO molecule are shown in Figure 9 (f), and an 8 degree tilt from a vertical alignment towards the y -direction and the p -wave CO tip is reflected in the calculated image in Figure 9 (g).

4.3.2. Simulating frequency shift data with the probe particle model The interpretation of AFM data on organic materials recorded with CO terminated tips is often performed using the probe-particle model after Hapala et al. [65]. This model assumes a Lennard-Jones interaction between the O front atom of tip and allows for a lateral bending of the CO termination. Standard parameters after [65] were used to plot Δf images in steps of 12 pm. For the simulations (as in the experiment), $k = 1800$ N/m and $f_0 = 30300$ Hz.

CONTENTS

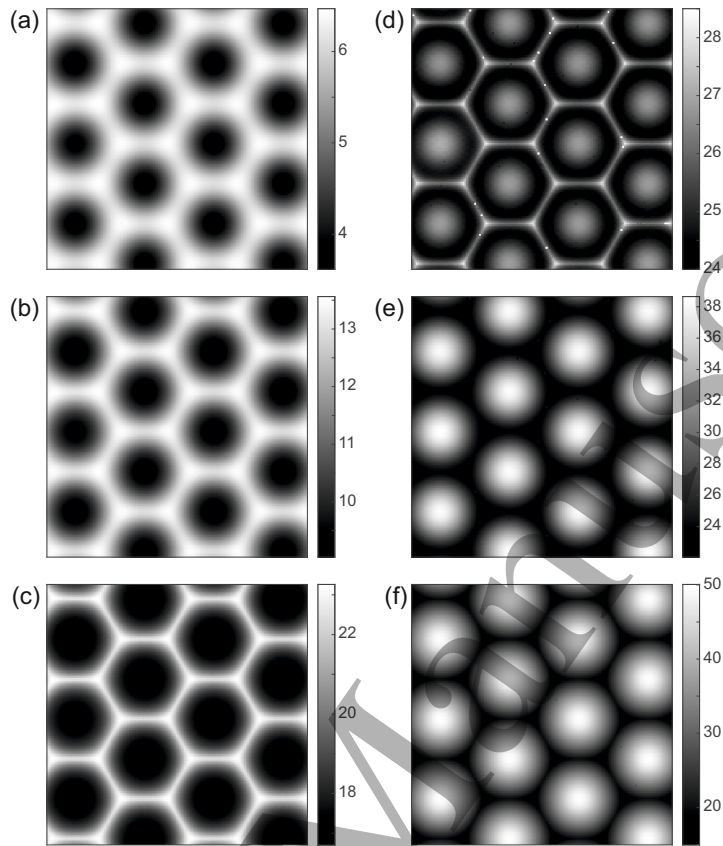


Figure 10. Effect of CO bending on image contrast and force spectroscopy. (a-c) Constant height AFM images of the average tip-sample force gradient $\langle k_{ts} \rangle = 2k\Delta f/f_0$ recorded at three distances where the z' scale corresponds to the z -scale in Figure 8. (d) Contour line at larger distance where little CO bending occurs, yielding regular contrast where atoms appear bright. (e) Contour line at close distance, where the O termination of the CO tip remains in the center of the graphene hexagon all the time, leading to strong CO bending and contrast inversion where hollow sites appear bright. (f) Force versus distance spectra in the center of the hexagon or hollow site (open circles) and over an atom position (solid diamonds), showing a kink followed by a smaller slope at a distance of ≈ 40 pm caused by CO bending.

The graphene is a flat sheet of carbon that was not allowed to relax. No electrostatics were included in the calculation.

A comparison of the experimental frequency shift data in Figure 8 with the probe-particle model simulations in Fig. 10 shows a convincing agreement, starting with an image that resembles the total charge density of graphene in (a), and followed by apparent bond sharpening from (b-d). This apparent bond sharpening with decreasing distances was already observed by Gross et al. in 2012 in Fig. 2 of [59]. Further distance reduction leads to incipient and complete contrast reversal from (d) to (f). CO bending also is responsible for a crossover in local force versus distance spectra.

CONTENTS

22

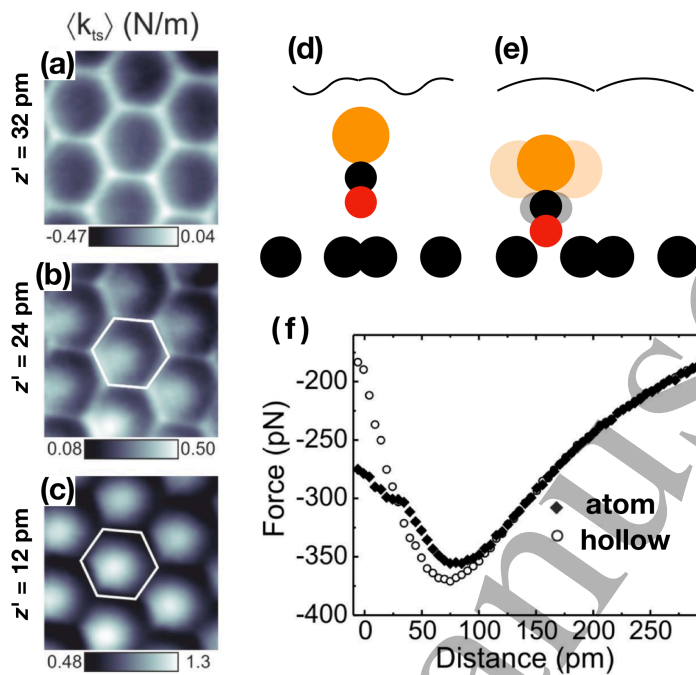


Figure 11. Effect of CO bending on image contrast and force spectroscopy. (a-c) Constant height AFM images of the average tip-sample force gradient $\langle k_{ts} \rangle = 2k\Delta f/f_0$ recorded at three distances where the z' scale corresponds to the z -scale in Figure 8. (d) Contour line at larger distance where little CO bending occurs, yielding regular contrast where atoms appear bright. (e) Contour line at close distance, where the O termination of the CO tip remains in the center of the graphene hexagon all the time, leading to strong CO bending and contrast inversion where hollow sites appear bright. (f) Force versus distance spectra in the center of the hexagon or hollow site (open circles) and over an atom position (solid diamonds), showing a kink followed by a smaller slope at a distance of ≈ 40 pm caused by CO bending.

4.3.3. CO bending leads to crossover in force versus distance spectra When the CO terminated tip is directly above an atom and interacts via Pauli repulsion, it is in an unstable equilibrium. As the lateral stiffness of CO terminated tips is small, only about 0.25 N/m [66], small lateral forces will bend the CO tip termination to the side.

Figure 11 shows two consequences of CO bending. First, we again observe apparent bond sharpening in Fig. 11 (a), transiting into incipient (b) and full (c) contrast reversal. The mechanism for this is illustrated in Fig. 11 (d,e). For intermediate distances, the CO tip termination stays almost perfectly upright and the contour of the frequency shift at constant height would show a positive value right above the carbon atoms as sketched in Fig. 11 (d). When moving very close, the oxygen termination of the CO tip is caught in the hollow site of the graphene hexagon and the CO termination pivots around the hollow site of graphene, causing a contrast inversion in the constant height frequency shift images in Figs. 11 (a-c).

The second consequence of CO bending is apparent in the force versus distance spectra shown in Figure 11 (f). The force versus distance spectrum over the center of

CONTENTS

the hexagon results in a smooth force distance curve because the oxygen end of the CO terminated tip remains stable in the center of the hexagon while local repulsive forces start to act. Note that although the net force on the tip is still attractive at a distance of 100 pm, the force on the CO tip is already repulsive, i.e. positive. The strong vdW attraction of the tip that is larger in magnitude than the repulsion to the CO tip leads to a net negative force on the tip. When performing the force spectrum over the atom position in Figure 11 (f), the CO molecule at the tip starts to bend at a distance of around 40 pm, leading to a crossover of the two force curves.

An inverted crossover, caused by a completely different reason, has been observed by Boneschanscher et al. in Fig. 1c of [49] for graphene on iridium using a metallic tip. The crossover region in Fig. 1c of [49] is smooth and was explained by turning an initially attractive short range interaction between the tip and the carbon atoms in graphene to repulsion for smaller distances. COFI images of the tip are not presented in [49], and as these authors did not report instability issues as those observed here in Figure 9, we suspect that either graphene adheres much stronger to Ir(111) than to the buffer layer on SiC, or their tip was also a fairly inert metallic trimer tip similar to the one used in Fig. 6 rather than a highly reactive single atom metal tip as presented in Fig. 9.

4.3.4. The emergence of higher harmonics for close distances The right column of Figure 8 shows that the third harmonic a_3 starts to become noticeable at a distance (row (d)) where the contrast inversion starts to emerge and the repulsive force between the CO tip termination becomes large enough to cause considerable tip bending.

The emergence of a third harmonic requires the tip to go through a force profile as plotted in Figure 4 (c), i.e. overcoming a force barrier, followed by a reduction in force and again followed by an increasing force. The qualitative Figure 3 (c) would provide a similar force profile, suggesting that the emergence of a_3 is related to overcoming a strong force barrier such as occurs in the graphite to diamond transition.

While a_3 starts to emerge at the hollow sites, further approach leads to a ring-like appearance. We now look closer at this emergence of rings in a_3 in Figure 12. The weak lateral stiffness of the CO terminated tip allows it to pivot around the center of the metallic front atom of the tip with an arm of $d = r_{Cu} + r_{CO}$ as displayed in Fig. 12.

Figure 12 (a) shows the evolution of third harmonics a_3 with decreasing distance at distance decrements of merely 6 pm. Note that there is a slight tilt of about 0.5° in the $500 \text{ pm} \times 500 \text{ pm}$ scan frames - the top line is approximately 4 pm closer than the bottom line, therefore a_3 becomes noticeable first at the bottom of Figure 12 (b). The third harmonics start to emerge at the hollow sites and evolve into ring-like structures for closer distances, in accordance with the model of their origin presented in Figure 12 (m) that shows that the diameters of the ring-like structures follow a simple geometric relation $(d_{\text{HH}}/2)^2 = r_{Cu+CO}^2 - z'^2$ plotted in Fig. 12 (n).

Figure 13 (a) shows a constant height image of the third harmonic a_3 at a close distance where the rings of adjacent unit cells merge, leaving a triangular local minimum

CONTENTS

24

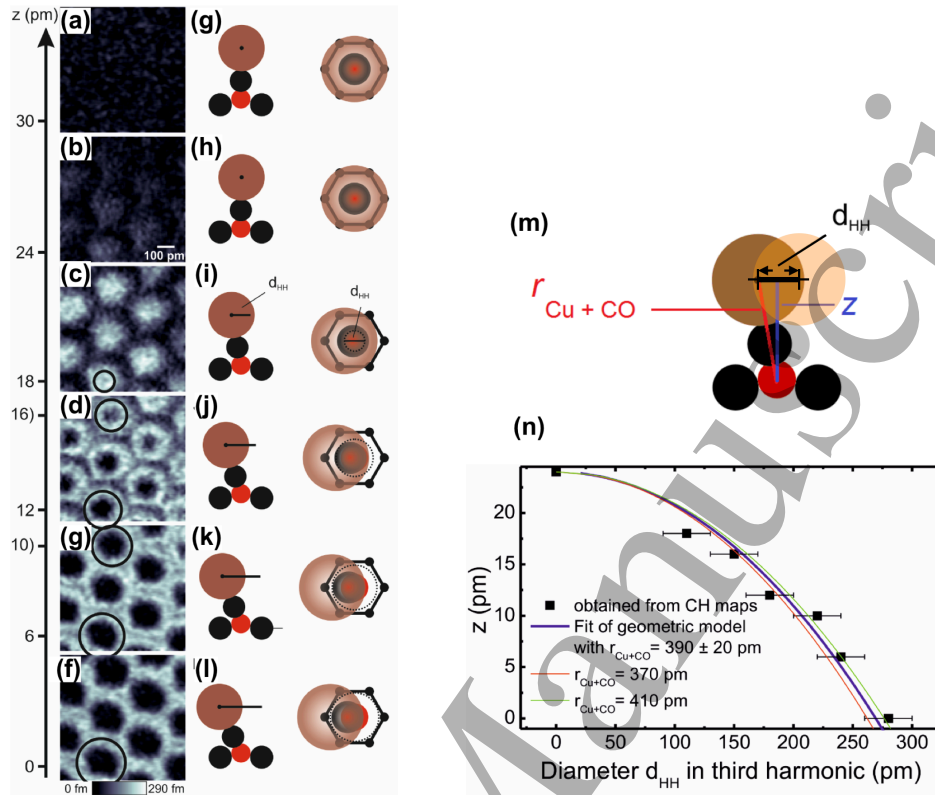


Figure 12. (a) Third harmonic amplitude a_3 for six different heights spaced by 6 pm. A noticeable amplitude a_3 first occurs in the center of the graphene hexagons in (b), turning to rings for closer distances in (d) with increasing diameters d_{HH} (g,f). Note that the scan frame is not perfectly parallel to the sample surface and the z -distances at the lower edge are approximately 4 pm smaller than at the top edge. (g-l) Schematic view showing a tilted CO tip termination. (m,n) The ring diameter d_{HH} follows a simple Pythagorean relation $(d_{HH}/2)^2 = r_{Cu+CO}^2 - z'^2$.

at one of the two lattice sites A and B. The small width $\Delta x \approx 20$ pm of the roughly circular profile of a_3 shows that the distance dependence of a_3 at the hollow site plotted in Fig. 13 (b) even overestimates the z width of a_3 . With an estimate for the arm length d , we find a maximal deflection $\phi \approx 18^\circ$, and with the geometry considerations in Figure 13 (c) we find $\Delta z \approx \Delta x \times \tan \phi \approx 7$ pm.

Thus, the third harmonic occurs over a very thin slice in z direction of only about 7 pm. Given that the weight function to derive a_3 (see equation 5) has a width of about the actual oscillation amplitude A' at which the front atom of the tip and its next sample atom oscillate, it shows that this actual oscillation amplitude A' between the tip's front atom and graphene in the squeezed material must be much smaller than the oscillation amplitude of the sensor itself with $A = 50$ pm. This reduced amplitude can be explained by the repulsive load of the tip over the relatively soft bilayer graphene. Figure 14 is a schematic view of the sample and tip arrangement. Although the tip oscillates at amplitude A , the distance between the graphene surface layer and the tip will oscillate at a much smaller amplitude A' once the repulsive load becomes large

CONTENTS

25

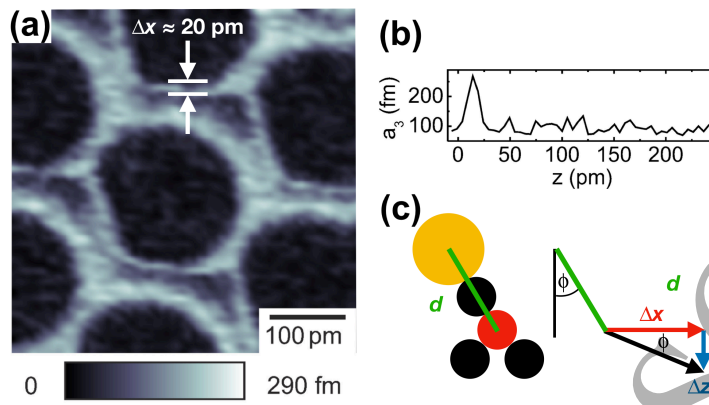


Figure 13. (a) High resolution image of a_3 close to the distance where two adjacent higher-harmonic rings merge. Parameters: $V_{tip} = 0$ V, image size 0.5×0.5 nm² at 64×64 pxl, scanning speed 125 pm/s. (b) Distance spectrum of the third harmonic amplitude a_3 recorded over the hollow site. (c) Geometry of the CO terminated tip trapped with its O termination in the hollow site (see text).

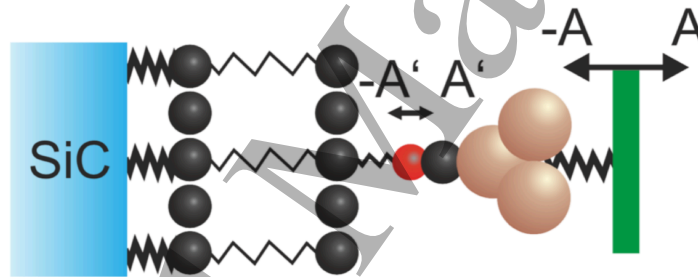


Figure 14. Geometry of the SiC substrate, covered by a buffer layer of graphene and an additional graphene layer. The CO terminated tip oscillates at a reduced amplitude A' once the repulsive forces become significant (see text).

enough to compress the soft bonds between the buffer layer and the graphene.

Figure 15 shows another high resolution image of a_3 supplemented by dissipation data on the right column. The presence of dissipation after equation 7 shows that the tip oscillates non-adiabatically, exciting bursts of phonons of a larger amplitude than those present at the sample temperature of about 4 K for each oscillation cycle.

In a single graphene layer, A and B sites are equal. As mentioned above, for graphene on the buffer layer of SiC, A and B sites are different, because A sites have A_{BL} atoms in the buffer layer underneath while B sites are above hollow sites. If the hypothesis about the graphite to diamond bonding transition is correct, an asymmetry between A and B sites is expected. We expect the A sites to be reduced in height with respect to the B sites. Figure 15 shows high resolution data of a_3 and the energy dissipation per oscillation cycle for four different heights spaced by merely 5 pm. The third harmonic a_3 shows clear differences between A and B sites in (c) and (d), and the dissipation data shows these differences clearly in (c) and in particular in (d), supporting

CONTENTS

26

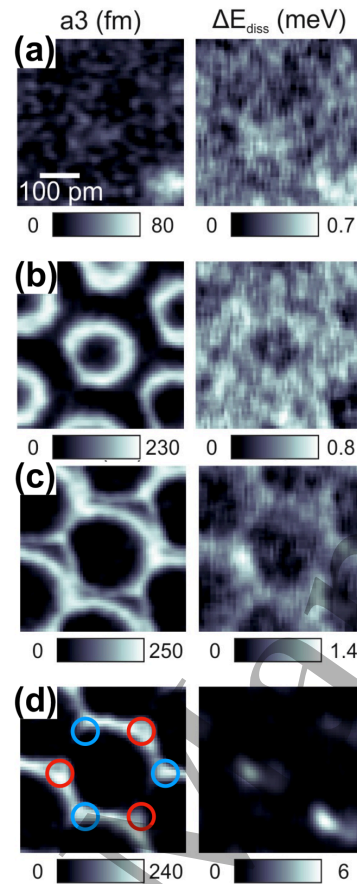


Figure 15. (a-d) Third harmonic amplitude a_3 (left) and energy dissipation of the sensor per oscillation cycle (right) at distance decrements of merely 5 pm per frame, i.e. the whole z -range covered here is only 20 pm. The onset of a few meV of dissipation for very small distances indicates a hysteresis in the force versus distance curve. Parameters: $V_{tip} = 0$ V, image size 500×500 pm² at 64×64 pxl, scanning speed 125 pm/s.

the bonding transition hypothesis.

4.4. Distance spectra

The physical nature of the tip-sample interaction is revealed by the distance dependence of the pertinent physical observables. Figure 16 (a) shows the distance dependence of the frequency shift recorded with a CO terminated tip that was placed over a hollow site, i.e. the center, of a graphene unit cell. The deconvoluted force in Fig. 16 (b) has only a very small magnitude, reaching merely -300 pN. However, this inconspicuous force curve is incompatible with the distance dependence of two more observables, the averaged tunneling current and the third harmonic a_3 .

The averaged tunneling current $\langle I \rangle$ is displayed in a logarithmic scale in Fig. 16 (c), it is at or below the noise level of about 1 pA for $z > 200$ pm, rising in the expected exponential fashion after equation 2 until z reaches about 70 pm, where the

CONTENTS

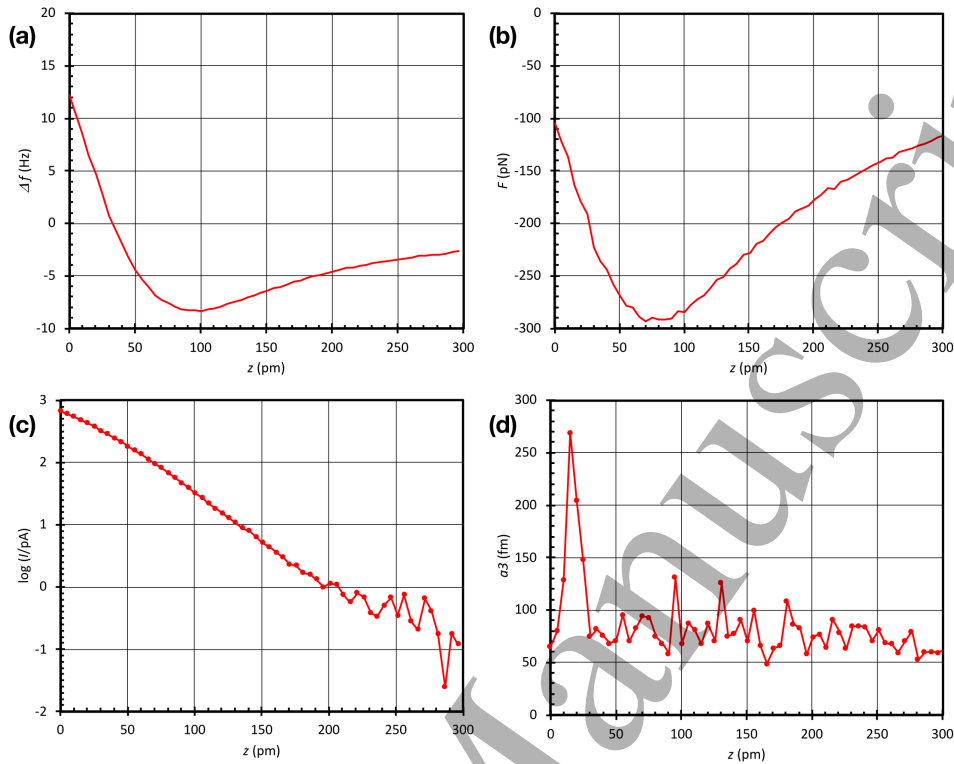


Figure 16. Distance dependence of (a) frequency shift $\Delta f(z)$, (b) tip-sample force $F_{ts}(z)$, (c) logarithm of tunneling current in pA and (d) third harmonic amplitude $a_3(z)$ as a function of vertical distance z . The data was recorded in the center of a hexagon (hollow site), see Fig. 5 (a).

slope becomes noticeably smaller. This reduction in slope points to the emergence of repulsive forces, as previously observed in local tunneling versus distance spectroscopy by Schull et al. [67] on buckyballs.

The emergence of a strong third harmonic in Fig. 16 (d) is interesting and possibly caused by the graphite to diamond transition discussed earlier. The force versus distance relation that is needed to generate a third harmonic of a magnitude of 0.2 pm, again derived from equation 5, is a force that swings up and down by almost 3 nN as displayed in Figure 4.

5. Images of graphene using CuOx tips

The introduction of copper oxide (CuOx) tips [25] provided tips that are as inert as CO terminated tips but more stiff.

The termination of AFM tips with a CO molecule has three profound benefits: First, CO terminated tips are chemically highly inert, interacting mainly by Pauli repulsion [68], where so far, our group only found Cu and Fe as exceptions [12]. Second, the atomic radius of O is small. Therefore, they allow high spatial resolution. The lateral softness can lead to imaging artifacts, although sometimes the flexibility of the tips

CONTENTS

28

provides greater contrast. Third, the long CO molecule acts like a distance holder that keeps the blunt metal tip further from the flat surface, reducing vdW attraction.

In 2016, Mönig et al. [25] introduced copper oxide (CuOx) tips, tips that share the first and second benefit of CO tips yet providing greater lateral stability. We have used those tips to image graphene on SiC as well.

Figure 17 shows again a constant height set where the tunneling current and frequency shift data look similar to the data set taken with a CO terminated tip of Fig. 8 for relatively weak repulsive forces up to (b). However, they do not show significant third harmonics, possibly because the bluntness of CuOx tips does not allow them to push a single unit cell of graphene significantly closer to the buffer layer as other parts of the blunt tip are expected to touch neighboring unit cells. However, one of the two lattice sites A, B is significantly harder than the other, as evident from the emergence of a strong A-B site difference for heights below 20 pm from Figure 17 (d).

Also, the force versus distance curve over the hollow site displayed in Figure 18 (a) shows a pronounced step at a z value of 30 pm that points to a collapse of the lattice and a possible start of rehybridization. When performing the spectrum over an atom site in (b), the transition is softer and at closer z values as expected.

6. Images of graphene under weak repulsive forces for CO-terminated and CuOx tips

In scanning transmission electron microscopy, progress in collimating the electron beam to a diameter close to 130 pm enabled the resolution of the atomic lattice and defects in graphene [43]. Graphene on SiC has been studied before by FM-AFM in vacuum at low temperatures [49], room temperature [69] and in ambient conditions [70]. The data here observed in a slight repulsive regime reveals a very subtle detail. Figure 19 (a) shows a charge density calculation of graphene at a height of 200 pm over the planes connecting the C nuclei. Slater-type orbitals were used for the calculation as in [54], showing weak but noticeable local maxima over the atom sites. When operating AFM with CO or CuOx tips at small repulsive forces, the experimental images clearly show the local maximum of charge density over the carbon atoms as displayed in Fig. 19 (b) for CO terminated tips and in (c) for CuOx tips. The overall contrast is similar for CO and CuOx tips, but the absolute value of the frequency shift is more negative for CuOx tips due to the larger vdW attraction.

7. Summary

To summarize the unification of the experimental observation of higher harmonics and the DFT data, we can explain the higher harmonics as a consequence of local and temporary transtion of graphene layers into a diamond structure. However, we can only explain the fivefold increase of van-der-Waals attraction to values up to 10 nN by a runaway increase of vdW attraction due to indented graphene snuggling up closely

CONTENTS

29

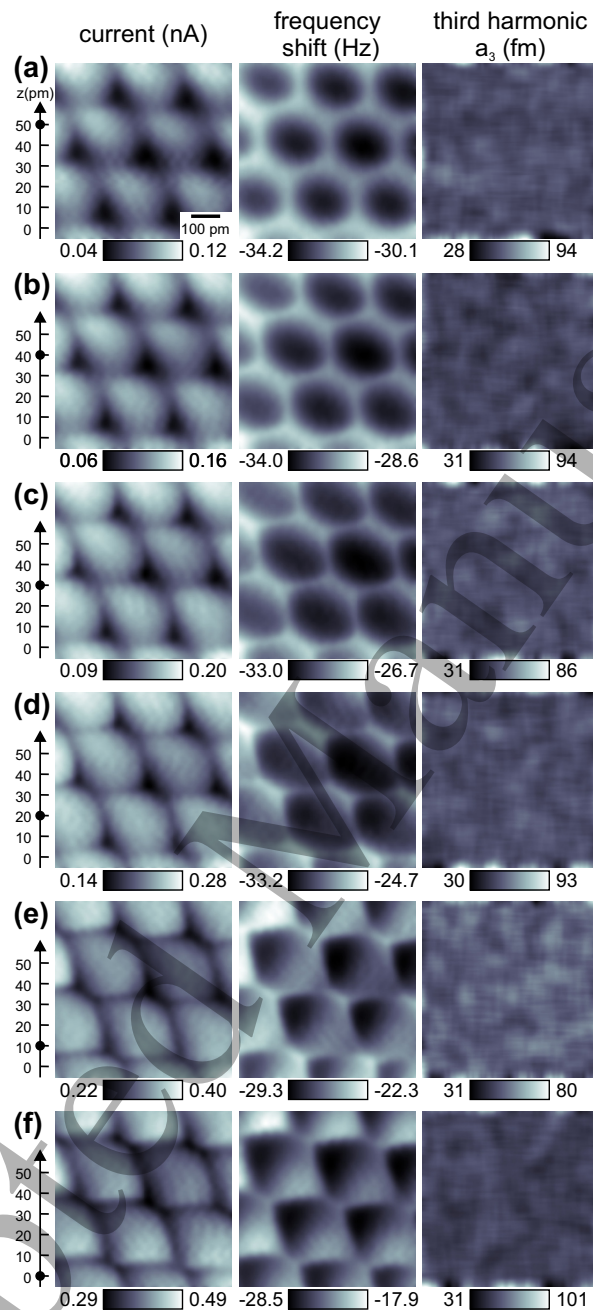


Figure 17. Constant-height images of tunneling current, frequency shift and third harmonic a_3 for a CuOx tip over a distance range of 50 pm from (a) to (f) with decrements of 5 pm. At $z = 50$ pm, the frequency shift image is close to the total charge density of graphene, i.e. a natural image of the surface. For closer distances, distortions start to appear before a pronounced asymmetry between A and B sites emerges at distances at and below $z = 10$ pm. Among the higher harmonics, only a_3 rises above the experimental noise, yet without a clear signature [61].

CONTENTS

30

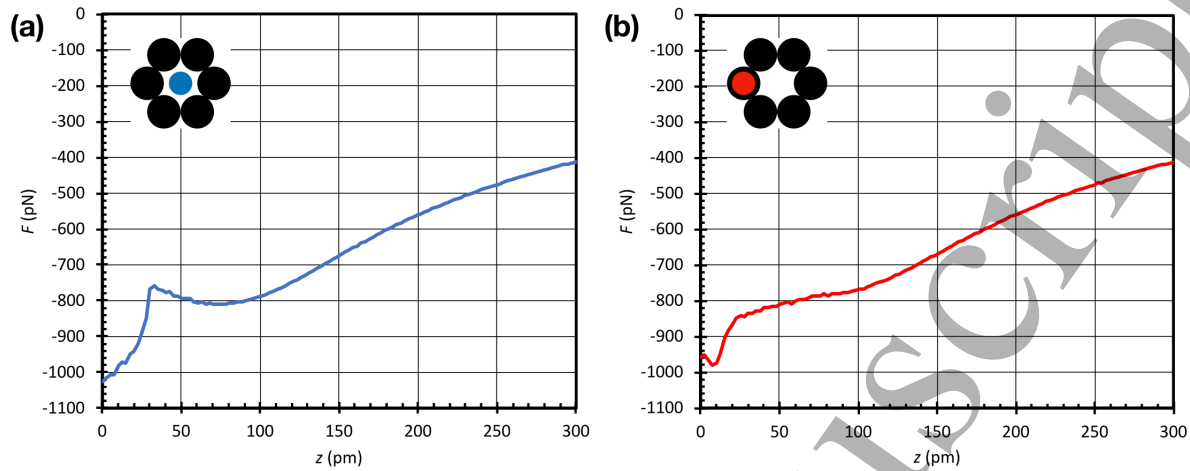


Figure 18. Force versus distance spectra for a CuOx tip over a hollow site (a) and a carbon atom (b). (a) The sharp fall of the spectrum taken at the hollow site at $z = 30$ pm points to a possible onset of a graphite to diamond transition. (b) When taking the spectrum over a carbon atom, we expect that both sample- and tip deformations lead to a lateral displacement, finally ending with the oxygen front atom in the hollow site, causing a delayed force induced transition.

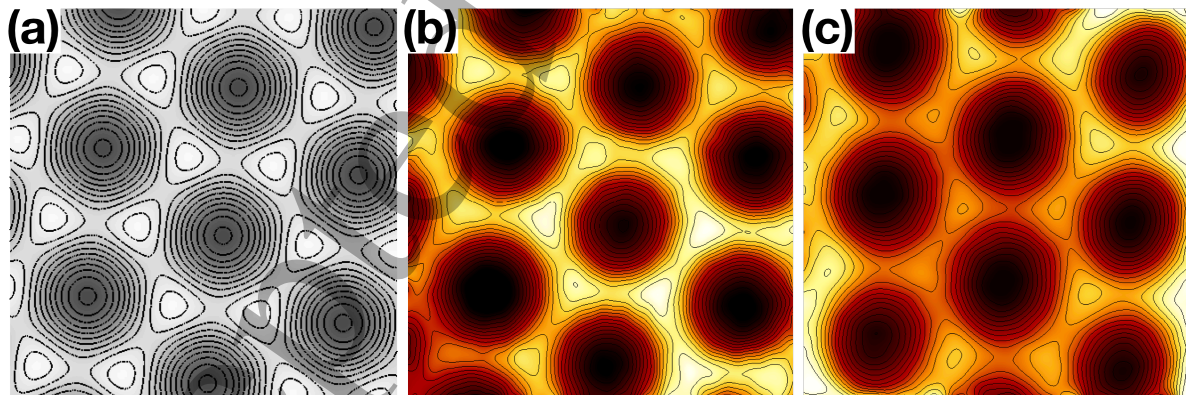


Figure 19. Calculation of total charge density for graphene (a) and high resolution constant height images of graphene using a CO terminated tip (b) and a CuOx tip (c). Image size 0.6 nm by 0.6 nm. Parameters: (a) the total charge density is calculated at a height of 200 pm above the plane that connects the nuclei of the carbon atoms. The charge density ranges from 2 (dark) to 4 (bright) electrons per nm^3 , the contour lines are spaced by 0.2 electrons per nm^3 . (b) Sensor type S1.0 (see [19] for specifications) with $k = 1800$ N/m, $f_0 = 26660.3$ Hz, $A = 50$ pm and $Q = 42844$. The contour lines are spaced by 0.1 Hz, the frequency shift ranges from -8.2 Hz (dark) to -4.9 Hz (bright). (c) Sensor type M4 (see [19] for specifications) with $k = 1850$ N/m, $f_0 = 46597.3$ Hz, $A = 50$ pm and $Q = 482321$. The contour lines are spaced by 0.1 Hz, the frequency shift ranges from -33.5 Hz (dark) to -30.2 Hz (bright).

CONTENTS

31

against a relatively blunt metal tip. We also note that while the data was perfectly reproducible with that one tip, other tips that were possibly sharper did not produce the higher harmonics. Early data from 2004 [40], a time where tip preparation of AFMs was much less sophisticated and tips were known to be very blunt indicated by large negative frequency shifts showed even much higher magnitudes of higher harmonics, pointing to the importance of large runaway vdW attraction for the induction of a graphite to diamond transition and the subsequent generation of higher harmonics.

We note that as we do not yet have a recipe on how to prepare tips that reproduce the observed data, we cannot consider our data to be a proof for our suggested interpretation. In principle, some very odd tip artifact might also cause strong a_3 's. However, we routinely record higher harmonics on our low temperature microscopes and we have not ever observed such clear and strong higher harmonic signals with other CO terminated tips. One of the reviewers suggested that a tip that slides out of the local energy minimum in the center of the graphene hexagon might result in a force curve similar to the one plotted in Figure 4 (c). Also, one could speculate that a breaking of the bond between the CO molecule and the metallic front atom, followed by rebonding to a metal atom in the second atomic layer of the tip might result in a similar force curve. However, we doubt that the current and frequency shift data would continue in such a smooth way over distance reduction in Figures 8, 12 and 15.

In summary, we have found strong additional evidence to references [9] and [10] that the tip of an AFM can cause a pressure induced transition from an sp^2 type bonding symmetry to a diamond-like sp^3 type bonding. The picometer scale study allows us to describe this process on the atomic scale, opening up high-pressure material science to the atomic dimension. In the future, it would be desirable to supplement these studies with high speed optics to learn about chemical bond evolution in the time domain.

8. Appendix

8.1. Combined STM and AFM with reactive single atom metal tips

The tip is crucial for image contrast in STM and AFM. It appears to be sensible to use a sharp single atom metal tip. However, Ondracek et al. [48] calculated that single metal tips are very reactive even with respect to graphene and a tungsten tip can form a chemical bond with graphene where the attractive force reaches 2 nN [48]. This may come as a surprise, as graphite is a widely used lubricant. The graphene layers in graphite slide with very low friction on each other, even leading to superlubricity when those graphene layers are rotated as reported by Dienwiebel et al. [51].

Careful experiments have shown that the highly reactive single atom metal tips allow to obtain atomically resolved images as depicted in Figure 9. At large distance, the attractive forces to the tip are small enough such that atomically resolved STM data is obtainable in Figure 9 (a), while the AFM data in (b) does not show atomic contrast yet. Figures 9 (c,d,g,h) record an event, where the graphene surface layer apparently

CONTENTS

32

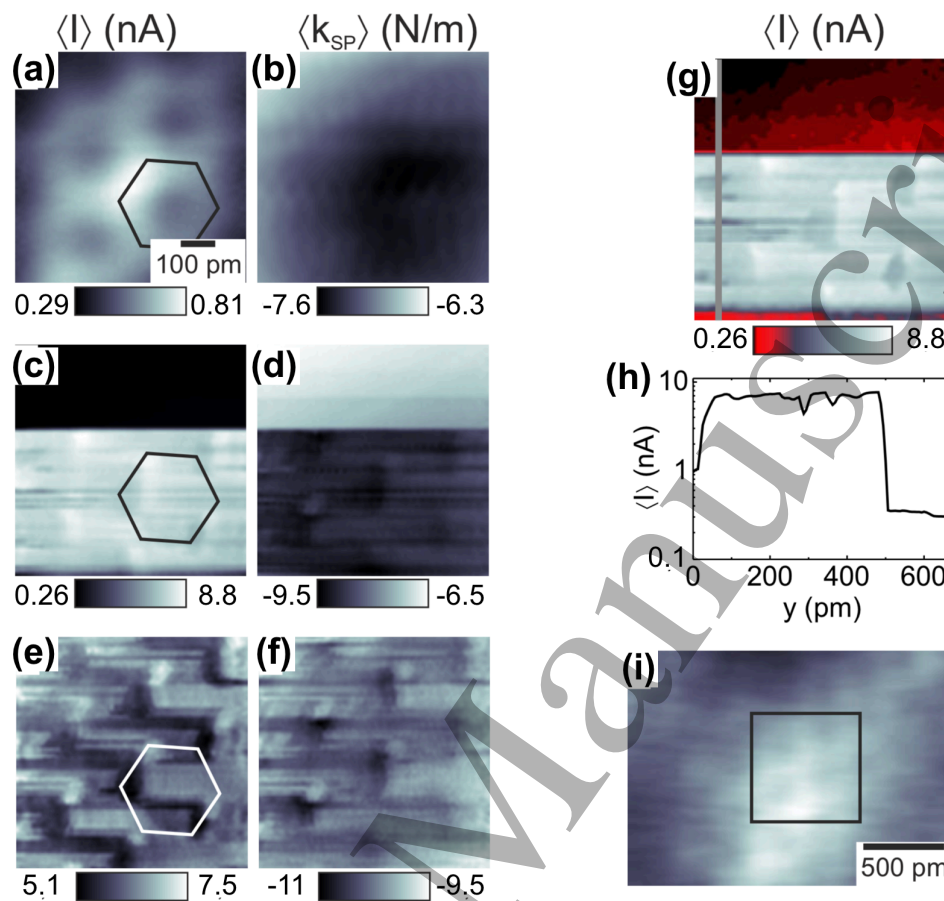


Figure 20. STM and AFM data with a reactive single metal tip. (a) Atomically resolved STM data, while the AFM data in (b) does not provide atomic resolution. (c) Constant height STM data where the graphene flake jumps towards the tip by about 150 pm, enabling atomic contrast in the AFM channel in (d) as well. (e) STM and (f) AFM data with atomic resolution with an unstable tip junction. (g) Constant height STM data and trace (h) showing a jump in current of more than 10, indicating a distance reduction of about 150 pm. (i) Scan area of (a-g).

moves about 150 pm closer to the tip as indicated by the 30-fold jump in current in Fig. 9 (h). At these close distances, atomic resolution is observed in both the STM channel in Fig. 9 (e) and the AFM channel in Fig. 9 (f).

Recently, it was verified experimentally that single metal adatoms on a surface are more than twice as reactive as trimer clusters [53]. Specifically, a single Fe atom on Cu(111) can exert up to 450 pN of attraction to a CO terminated tip, while a Fe trimer only exerts a maximal force of 200 pN [53]. We expect a related effect for single atom versus trimer tips and the reduced reactivity of trimers versus monomers on surfaces is consistent with metallic trimer tips allowing atomic imaging of graphene, while single atom tips pose a danger to pull the graphene layers towards the tip.

Figure 21 (a) shows a topographic STM image where a monolayer graphene on silicon carbide sample was scanned and the attractive forces between tip and sample

CONTENTS

33

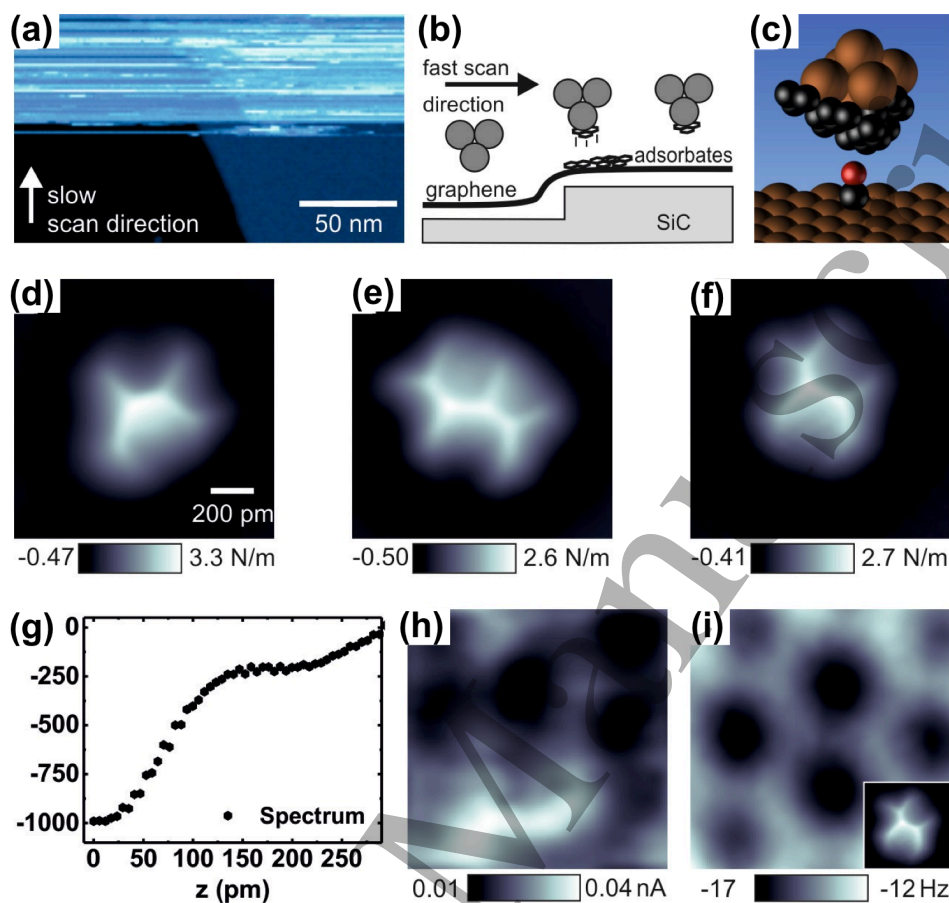


Figure 21. (a) Topographic STM image of monolayer graphene with a reactive tip, where the graphene flake jumps to the tip (b) after about half the image was collected. (c) Sketch of STM tip covered by graphene. (d-f) Experimental tip images obtained by COFI (carbon monoxide front atom identification see ref. [20]). The force versus distance spectrum (g) shows a shoulder that is caused by a lateral reversible drift of the tip during approach, allowing the tip to get even closer to reach a van-der-Waals attraction of about 1 nN. STM (h) and AFM (i) images of graphene obtained with a graphene covered tip. The inset of (i) shows the COFI portrait of the tip used to obtain the image.

were so large that the tip picked up a part of the graphene surface layer causing strong noise in the upper half of Figure 21 (a). This pickup of graphene flakes by a reactive metal tip, illustrated in Figure 21 (b), occurred quite frequently and leads to a metal tip that has a graphene cover wrapped around it as shown in Figure 21 (c).

Inspection of these compromised tips by COFI [20] is used to study and image the tip in Figure 21 (d) after the event that occurred in the midst of recording Figure 21 (a). Similar events occurred many times when starting with a monoatomic metal tip and the tips were always covered by graphene after these instabilities as shown in Figs. 21 (e,f). While it was still possible to image graphene atomically with these graphene covered tips, the force versus distance spectra showed pronounced shoulders as evident

CONTENTS

34

in Figure 21 (g). The appearance of the shoulder in Figure 21 (g) is caused by a change in the dominating vertex of the graphene sheet that covers the tip induced by the reduction of distance, also accompanied by a large lateral shift of constant height data for small height variations (not shown here, see Fig. A.2 in [71] for details). Graphene terminated tips provided noisy images in the STM channel (Fig. 21 (h)) and also in the AFM channel (Fig. 21 (i)), and cleaner data can be obtained with metallic trimer tips as shown in the following.

8.2. Correction of CO bending

A further demonstration of the effects of CO bending is provided by Figure 22, where we first use the normal force data from Figure 22 (a-c) to compute the interaction energy between tip and sample and then take the lateral derivative to calculate the CO deflection and to correct the image [63]. By utilizing the energy profile, calculating lateral forces from it and determining the lateral CO deflection [63, 66], the CO deflection can be determined and the images can be corrected as shown in Fig. 22. The correction algorithm computes the lateral forces acting on the CO terminated probe tip, calculates its lateral bending and corrects the “true” lateral position of the image data, correcting the apparent bond sharpening and leading to warped edges of the corrected images. The correction algorithm shows that the apparent sharpening of the images for closer distances is an artifact caused by the lateral bending of the CO terminated tip.

8.3. Higher harmonics of a different order and illustration of higher harmonics generation

One striking character of the higher harmonics is their very strong distance dependence. Another interesting property is that among the higher harmonics from a_2 , a_3 , a_4 and a_5 , only a_3 rises significantly above the noise, as displayed in Fig. 23. Although there is a weak signal in a_2 in (a), (b) and (c), only a_3 is large enough to allow for a detailed analysis.

This particular representation of the higher harmonics allows for a descriptive graphic representation in Fig. 24 - a_m is the m -th Fourier coefficient of the force when expressed a function of $z + A \cos \phi$.

In particular, for $m = 3$ we find:

$$a_3 = -\frac{1}{8k \cdot \pi} \int_0^{2\pi} F_{ts}(z + A \cos \phi) \cos(3\phi) d\phi. \quad (11)$$

The magnitude of the higher harmonics is very small: for a force sensor with $k = 1800 \text{ N/m}$, a third order amplitude $a_3 = 200 \text{ fm}$ corresponds to a Fourier component of 2.88 nN . This also implies that in practice, higher harmonics can only be detected at a very low detection bandwidth B . The noise in the higher harmonics is given by $\delta a_n = n_q(n f_0) \cdot \sqrt{B}$, where $n_q(f)$ is the frequency dependent deflection noise density that varies little with frequency (see section V in [?]) and is approximately $100 \text{ fm}/\sqrt{\text{Hz}}$.

CONTENTS

35

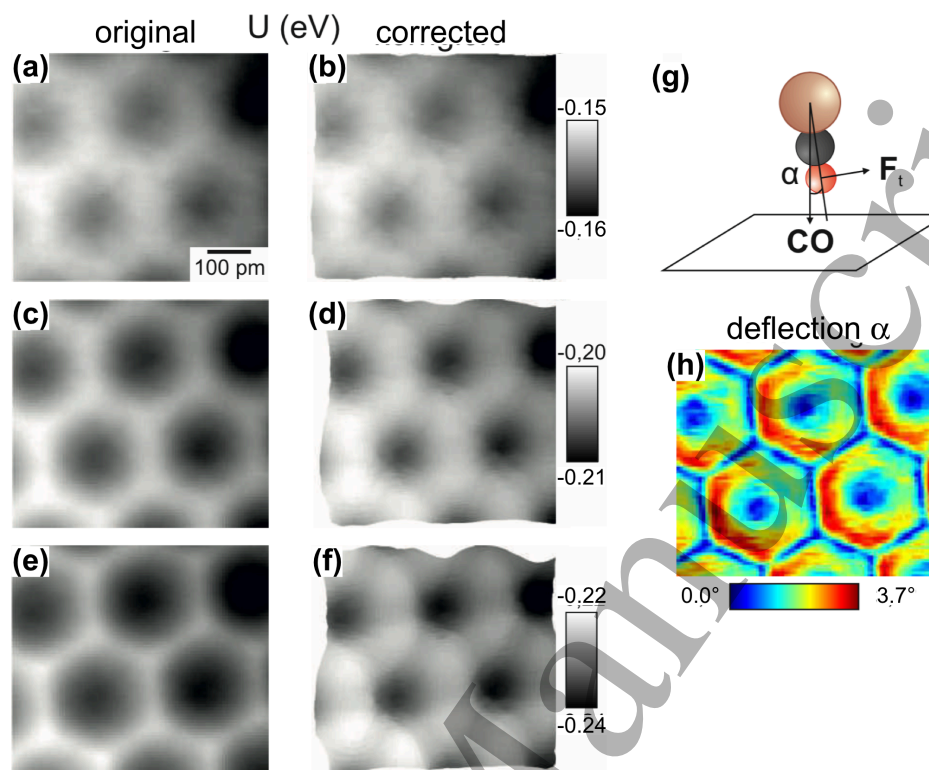


Figure 22. Raw data (a,c,e) and corrected data (b,d,f) for short range potential energy plots deconvoluted from constant height frequency shift images. (g) The CO terminated tip is deflected laterally by an angle α that ranges from 0 to 3.7° as shown in (h).

8.4. Examples of imaging graphene with CO tips on other substrates

In Figure 25 (a-d), we look at HOPG (highly oriented pyrolytic graphite) with a CO tip and observe the same evolution in contrast for the tunneling current and frequency shift as observed for graphene on SiC above, but no higher harmonics. The same happens for graphene on Cu(110) as shown in Figure 25 (e-h).

Figure 26 (d) shows images of the graphene flakes with two random CO molecules that formed on Cu(110), where their small size explains why the STM data in Figure 25 (e-h) is highly irregular, related to the irregularities that are observed in STM on multilayer graphene [73].

Figure 27 is an extended constant height set of Fig. 17 showing current, frequency shift and third harmonic over graphene with CuOx tips where the z distance samples are spaced by merely 5 pm.

9. Remarks about the time sequence of these data

Indications for the proposed transition from sp^2 graphene to sp^3 diamond bonding induced by the pressure of an AFM tip may have been unknowingly observed decades

CONTENTS

36

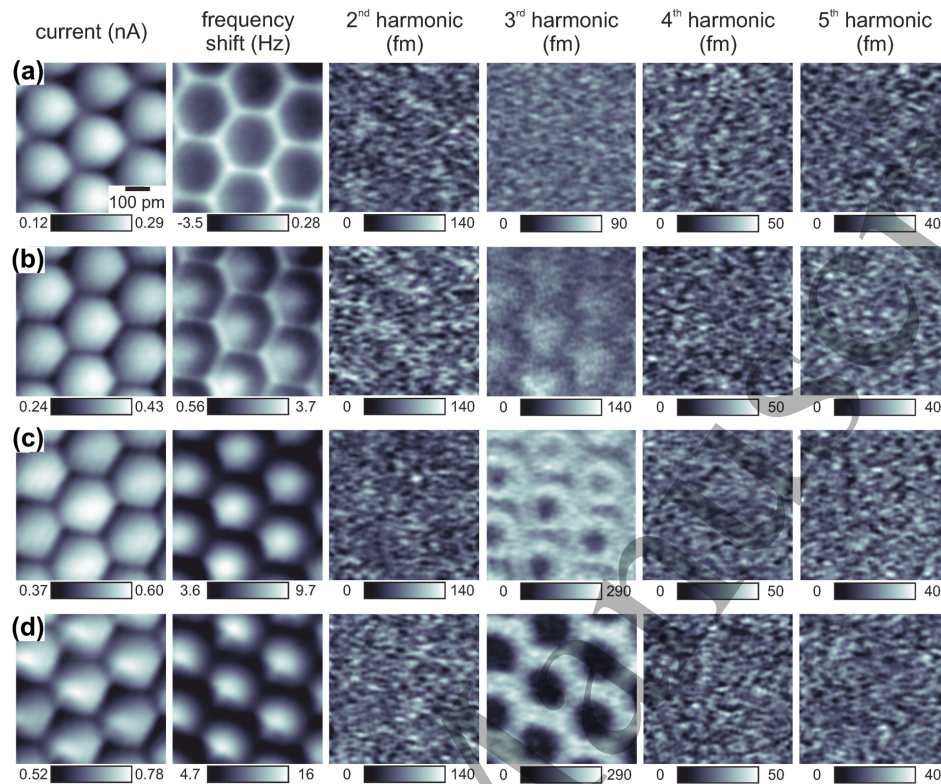


Figure 23. Constant-height images of tunneling current, frequency shift and higher harmonics a_2 , a_3 , a_4 , and a_5 for a CO terminated tip over a distance range of 48 pm from (a) to (d) with decrements of 12 pm. Among the higher harmonics, a_2 may show a weak signal over the noise in (a-c), but a_3 rises very significantly above the experimental noise [61].

ago. In 1987, Binnig observed the flipping rate of graphene in a low temperature STM operated in liquid helium [72], showing strong A-B asymmetry of the flipping rate in Fig. 3 (b) of [72]. This could have been caused by a similar outward-motion of C atoms induced by an sp^2 to sp^3 transition as found here in Figure (e,f,g). In 2004, Hembacher et al. [40] used graphene to image a tungsten tip, where the front atom of a tungsten tip was imaged by either the A or B atoms of the graphite sample using strong creation of higher harmonics in the sensor oscillation. A local transition to diamond would explain the experimental observation of only one front atom image per unit cell of graphite, i.e. a dangling sp^3 bond that reaches from rehybridized B atoms into the vacuum.

The experimental observation of a strong third harmonic that marks overcoming a force threshold with subsequent lowering and increase of the force has only been observed with one CO terminated tip so far. Although this tip lasted for about 34 hours, generated about 900 images (64 constant height datasets with 7 data channels and two scan directions) and experienced $\approx 9 \times 10^9$ approach-retract cycles over a $2A = 100$ pm distance range (oscillation at 26.6 kHz for 34 hours), we did not succeed so far to prepare a CO terminated tip that showed the same resilience.

As outlined further below, a CO terminated tip needs to fulfill two criteria to be

CONTENTS

37

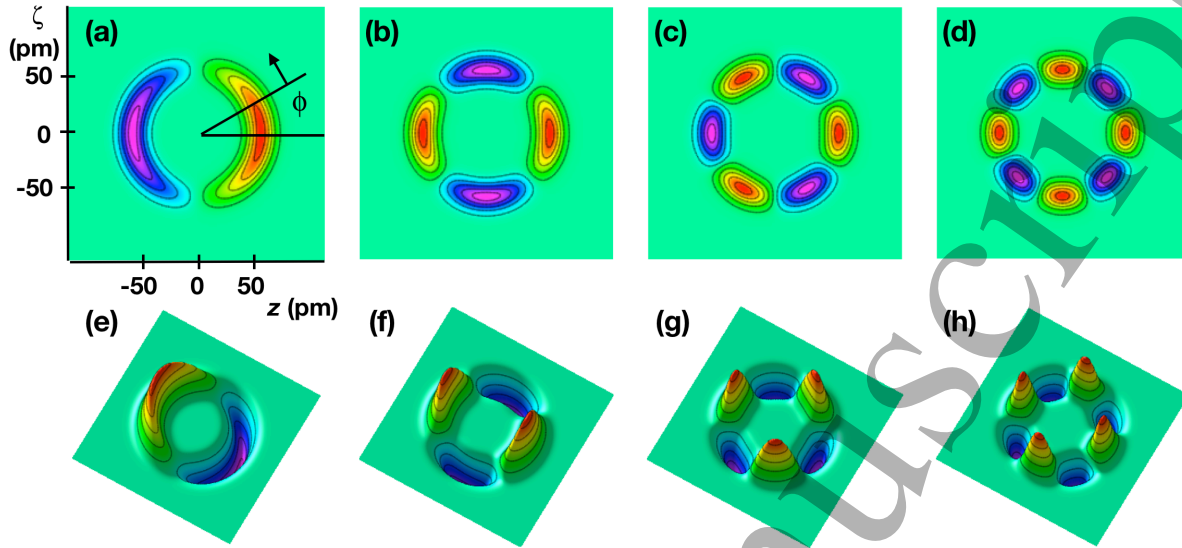


Figure 24. Generation of higher harmonics a_n of order n . The simple relation $a_n = F_{nf}/(k(1 - n^2))$ where F_{nf} is the Fourier component of the tip-sample force at frequency $n \cdot f$ yields a straightforward interpretation. – Pseudo-3D representations of force fields $F(z)$ with $z = A \cos \phi$, $\phi = 2\pi ft$ with oscillation frequency f and time t and $\zeta = A \sin \phi$ where the force is plotted in the vertical axis. (a) Force $F \propto z$ that generates a frequency shift, but no higher harmonics. (b) Force $F \propto \cos(2 \arccos(z/A))$ that generates a nonzero a_2 , but neither a frequency shift nor higher harmonics of an order other than 2. (c) Force $F \propto \cos(3 \arccos(z/A))$ that generates a nonzero a_3 , but neither a frequency shift nor higher harmonics of an order other than 3. (d) Force $F \propto \cos(4 \arccos(z/A))$ that generates a nonzero a_4 , but neither a frequency shift nor higher harmonics of an order other than 4. (e-h) 3D representations of the corresponding force fields $F(z)$.

able to induce a graphite-to-diamond transition and to generate a large third harmonic in the cantilever oscillation: 1. the CO terminated tip needs to sustain a repulsive force on the order of 10 nN; 2. it needs to have a fairly flat metal base to generate a strong van-der-Waals attraction. A recent study has shown that CO terminated tips that are all formed by attaching CO to a single metallic front atom of the tip still show a significant variation in their force versus distance curves over metal clusters (Fig. 1 in [53]).

10. Acknowledgments

We thank Matthias Scheffler for very fruitful discussions based on his body of experience with performing DFT calculations for graphene on SiC and establishing contact with XR who performed the DFT calculations. We also thank Thomas Seyller for supplying samples, Lydia Nemeč and Nikolai Moll for helpful discussions regarding DFT, and Florian Pielmeier for experimental contributions to the measurements of the graphene flake on Cu(110). Further, we thank Roland Bennewitz for providing very useful advice

CONTENTS

38

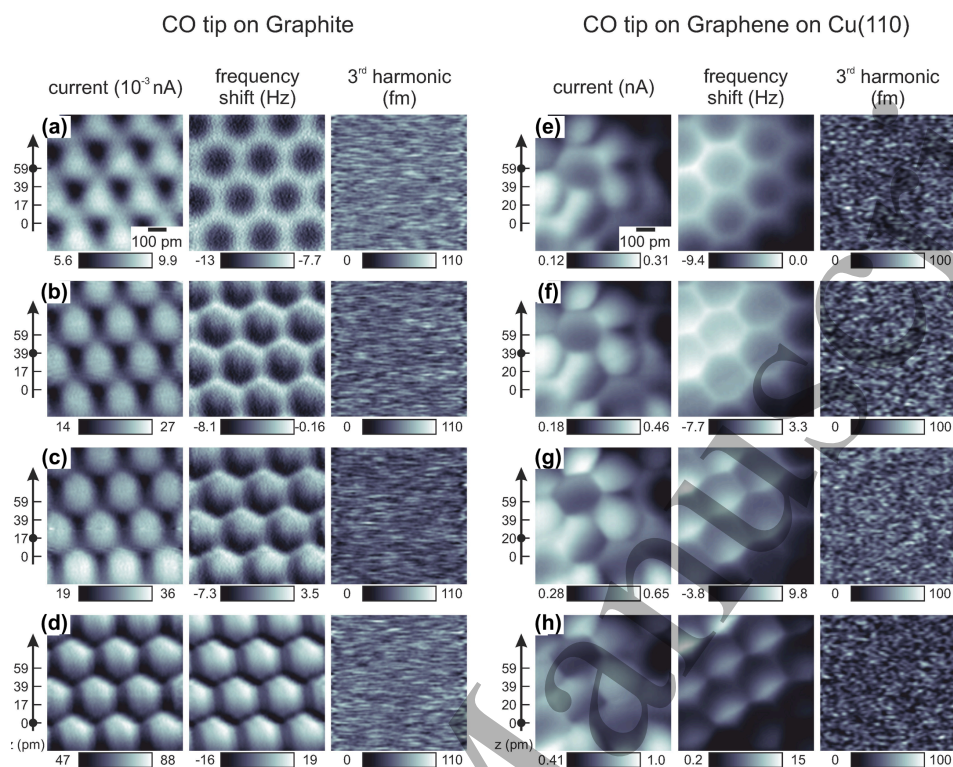


Figure 25. (a-d) Tunneling current, frequency shift and third harmonic amplitude a_3 for highly oriented pyrolytic graphite (HOPG) for decreasing distances. (e-h) Tunneling current, frequency shift and third harmonic amplitude a_3 for a small flake of graphene on Cu(110) for decreasing distances. The contrast of tunneling current (left column) and frequency shift (center column) shows a similar distance dependence as for graphene on SiC shown in Fig. 8. However, the higher harmonics a_3 remain below the noise level of about 100 fm.

on the presentation of the experimental and theoretical data in the manuscript. FJG thanks Roald Hoffmann for discussions that led to the inclusion of Figure 19 and Gerd Binnig for discussions regarding graphene reactivity. We thank the Deutsche Forschungsgemeinschaft for funding under GRK 1570.

- [1] R. M. Hazen, *The diamond makers*. (Cambridge University Press 1999).
- [2] P. Bundy, H. T. Hall, H. M. Strong, R. H. Wentorf, Man-made diamonds. *Nature* **176**, 51 (1955).
- [3] H. P. Bovenkerk, F. P. Bundy, H. T. Hall, H. M. Strong, R. H. Wentorf, Preparation of diamond. *Nature* **184**, 1094 (1959).
- [4] F. P. Bundy, Pressure-temperature phase diagram of elemental carbon. *Physica A* **156**, 169 (1989).
- [5] W. Grochala, Diamond: Electronic Ground State of Carbon at Temperatures Approaching 0 K, *Angew. Chem. Int. Ed.* **53**, 3680 (2014).
- [6] Ilya V. Popov Arno L. Görne, Andrei L. Tchougréeff, Richard Dronskowski, Relative stability of diamond and graphite as seen through bonds and hybridizations, *Phys. Chem. Chem. Phys.* **21**, 10961 (2019).
- [7] V.R. Howes, The Graphitization of Diamond, *Proc. Phys. Soc.* **80**, 648 (1962).
- [8] G. Binnig, C.F. Quate, Ch. Gerber, Atomic Force Microscope. *Phys. Rev. Lett.* **56**, 930 (1986).
- [9] Yang Gao, Tengfei Cao, Filippo Cellini, Claire Berger, Walter A. de Heer, Erio Tosatti, Elisa Riedo, Angelo Bongiorno, Ultrahard carbon film from epitaxial two-layer graphene. *Nature*

CONTENTS

39

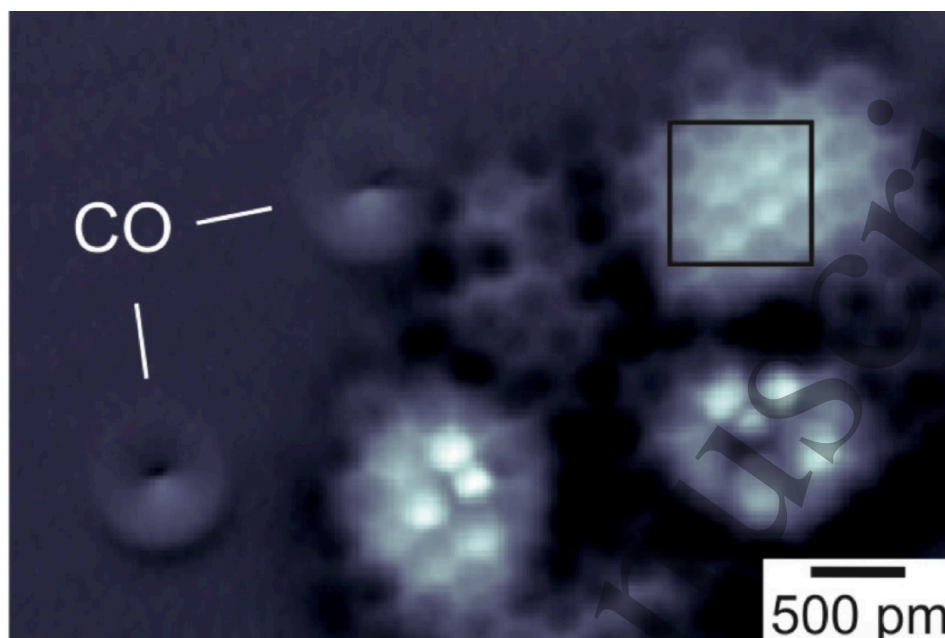


Figure 26. Constant-height image of small graphene flakes that formed by thermal annealing of Cu(110), accompanied by two adsorbed CO molecules. The square frame shows the scan area imaged in Fig. 25 (e-h).

Nanotechnology **13**, 133 (2018).

- [10] Filippo Cellini, Francesco Lavini, Elton Chen, Angelo Bongiorno, Filip Popovic, Ryan L. Hartman, Remi Dingreville, Elisa Riedo, Pressure-Induced Formation and Mechanical Properties of 2D Diamond Boron Nitride. *Advanced Science* **8**, 2002541 (2021).
- [11] R.P. Feynman, R.B. Leighton, M. Sands, Matthew”, *The Feynman lectures on physics; New millennium ed.*”, Basic Books, New York, NY (2010).
- [12] F. Huber, J. Berwanger, S. Polesya, S. Mankovsky, H. Ebert, F.J. Giessibl, Chemical bond formation showing a transition from physisorption to chemisorption, *Science* **366**, 235 (2019).
- [13] J.P. Perdew, K. Burke, M. Ernzerhof, Generalized Gradient Approximation Made Simple. *Phys. Rev. Lett.* **77**, 3865 (1996).
- [14] L. Nemeč, V. Blum, P. Rinke, M. Scheffler, Thermodynamic Equilibrium Conditions of Graphene Films on SiC. *Phys. Rev. Lett.* **111**, 065502 (2013).
- [15] V. Blum, R. Gehrke, F. Hanke, P. Havu, V. Havu, X. Ren, K. Reuter, M. Scheffler, Ab initio molecular simulations with numeric atom-centered orbitals. *Comput. Phys. Commun.* **180**, 2175 (2009).
- [16] N. N. Klimov, S. Jung, S. Zhu, T. Li, C. A. Wright, S. D. Solares, D. B. Newell, N. B. Zhitenev, J. A. Stroscio, Electromechanical Properties of Graphene Drumheads. *Science* **336**, 1557 (2012).
- [17] Naruo Sasaki, Masaru Tsukada, Effect of Microscopic Nonconservative Process on Noncontact Atomic Force Microscopy, *Jpn. J. Appl. Phys.* **39**, L1334 (2000).
- [18] F. J. Giessibl, Atomic Resolution on Si(111)-(7×7) by Noncontact Atomic Force Microscopy with a Force Sensor based on a Quartz Tuning Fork. *Appl. Phys. Lett.* **76**, 1470 (2000).
- [19] F. J. Giessibl, The qPlus sensor, a powerful core for the atomic force microscope. *Rev. Sci. Instrum.* **90**, 11101 (2019).
- [20] J. Welker, F. J. Giessibl, Resolving the angular dependence of chemical bonding forces by force microscopy. *Science* **336**, 444 (2012).
- [21] T. Hofmann, F. Pielmeier, F. J. Giessibl, Chemical and Crystallographic Characterization of the

CONTENTS

40

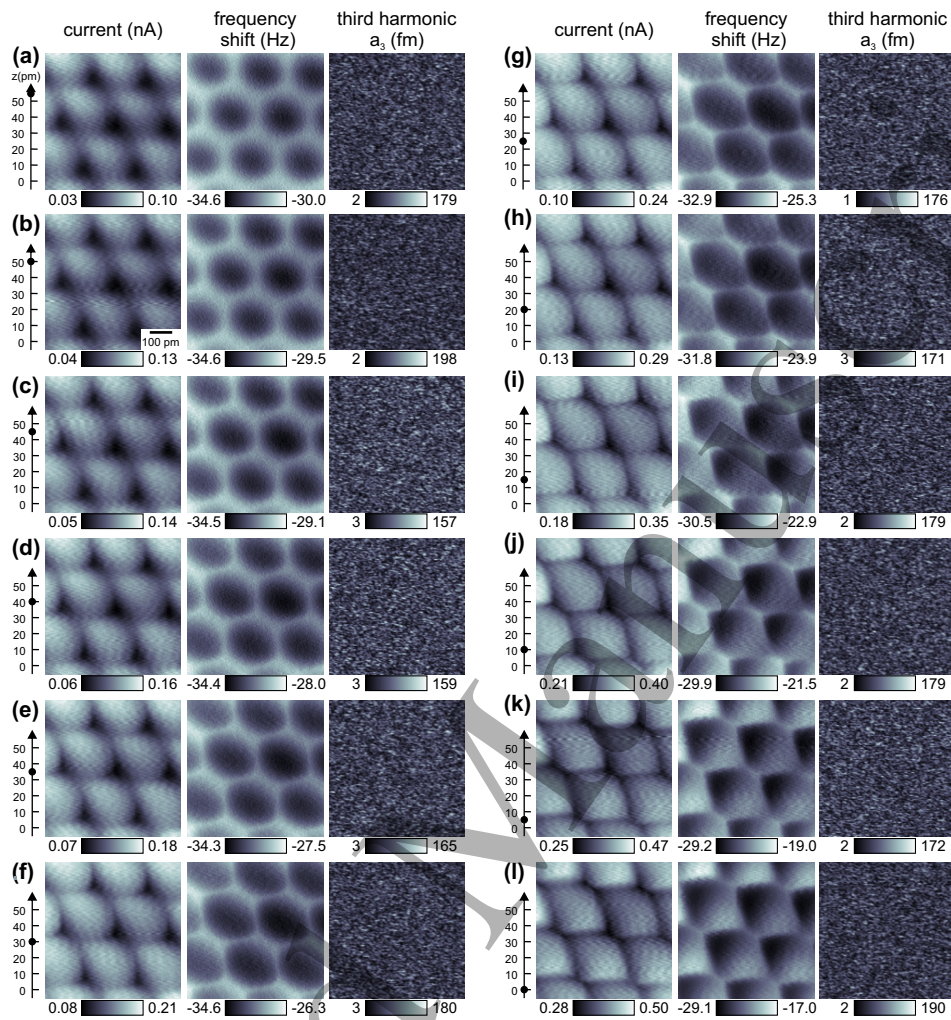


Figure 27. Constant-height images of tunneling current, frequency shift and third harmonic a_3 for a CuOx tip over a distance range of 50 pm from (a) to (f) with decrements of 5 pm. At $z = 50$ pm, the frequency shift image is close to the total charge density of graphene, i.e. a natural image of the surface. For closer distances, distortions start to appear before a pronounced asymmetry between A and B sites emerges at distances at and below $z = 10$ pm.

Tip Apex in Scanning Probe Microscopy. *Phys. Rev. Lett.* **112**, 066101 (2014).

- [22] O. Gretz, A. J. Weymouth, F. J. Giessibl, Identifying the atomic configuration of the tip apex using STM and frequency-modulation AFM with CO on Pt(111). *Phys. Rev. Research* **2**, 033094 (2020).
- [23] L. Bartels, G. Meyer, K.-H. Rieder, Controlled vertical manipulation of single CO molecules with the scanning tunneling microscope: A route to chemical contrast. *Appl. Phys. Lett.* **71**, 213 (1997).
- [24] L. Gross, F. Mohn, N. Moll, P. Liljeroth, G. Meyer, The Chemical Structure of a Molecule Resolved by Atomic Force Microscopy. *Science* **325**, 1110 (2009).
- [25] H. Mönig, D. R. Hermoso, O. Díaz Arado, M. Todorović, A. Timmer, S. Schüer, G. Langewisch, R. Pérez, and H. Fuchs, Submolecular Imaging by Noncontact Atomic Force Microscopy with an Oxygen Atom Rigidly Connected to a Metallic Probe. *ACS Nano* **10**, 1201 (2016).

CONTENTS

41

- [26] A. Liebig, F.J. Giessibl, In-situ characterization of O-terminated Cu tips for high-resolution atomic force microscopy. *Appl. Phys. Lett.* **114**, 143103 (2019).
- [27] Damla Yesilpinar, Bertram Schulze Lammers, Alexander Timmer, Zhixin Hu, Wei Ji, Saeed Amirjalayer, Harald Fuchs, Harry Mönig, Mechanical and Chemical Interactions in Atomically Defined Contacts. *Small* **10**, 1201 (2021). <https://doi.org/10.1002/sml.202101637>
- [28] C.J. Chen, *Introduction to Scanning Tunneling Microscopy*. (Oxford University Press 1993).
- [29] T. R. Albrecht, P. Grütter, D. Horne, D. Rugar, Frequency modulation detection using high-Q cantilevers for enhanced force microscope sensitivity. *Journal of Applied Physics* **69**, 668 (1991).
- [30] F.J. Giessibl, Forces and frequency shifts in atomic-resolution dynamic-force microscopy. *Phys. Rev. B* **56**, 16010 (1997).
- [31] F.J. Giessibl, A direct method to calculate tip-sample forces from frequency shifts in frequency-modulation atomic force microscopy. *Appl. Phys. Lett.* **78**, 123 (2001).
- [32] K. Kobayashi, H. Yamanda, K. Matsushige, Frequency noise in frequency modulation atomic force microscopy. *Rev. Sci. Instrum.* **80**, 043708 (2009).
- [33] J.E. Sader, S.P. Jarvis, Accurate formulas for interaction force and energy in frequency modulation force spectroscopy. *Appl. Phys. Lett.* **84**, 1801 (2004).
- [34] J.E. Sader, B.D. Hughes, F. Huber, F.J. Giessibl, Interatomic force laws that evade dynamic measurement. *Nature Nanotechnology* **13**, 1088 (2018).
- [35] F. Huber, F.J. Giessibl, Experimental use of the inflection point test for force deconvolution in frequency-modulation atomic force microscopy to turn an ill-posed situation into a well-posed one by proper choice of amplitude. *Journal of Applied Physics* **127**, 184301 (2020).
- [36] J.E. Sader, The automation of robust interatomic-force measurements. *Review of Scientific Instruments* **91**, 103702 (2020).
- [37] U. Dürig, Interaction sensing in dynamic force microscopy. *New Journal of Physics* **2**, 5.1 (2000).
- [38] S. Kawai, S. Hafizovic, T. Glatzel, A. Baratoff, E. Meyer, Rapid reconstruction of a strong nonlinear property by a multiple lock-in technique. *Phys. Rev. B* **85**, 165426 (2012).
- [39] F.J. Giessibl, Advances in Atomic Force Microscopy. *Rev. Mod. Phys.* **75**, 749 (2003).
- [40] S. Hembacher, F. J. Giessibl, J. Mannhart, Force Microscopy with Light Atom Probes. *Science* **305**, 380 (2004).
- [41] A. K. Geim, K. S. Novoselov, The rise of graphene. *Nature Materials* **6**, 183 (2007).
- [42] A. K. Geim, Graphene: Status and Prospects. *Science* **324**, 1530 (2009).
- [43] K. V. Emtsev, A. Bostwick, K. Horn, J. Jobst, G. L. Kellogg, Lothar Ley, J. L. McChesney, T. Ohta, S. A. Reshanov, J. Röhrl, E. Rotenberg, A. K. Schmid, D. Waldmann, H. B. Weber, T. Seyller, Towards wafer-size graphene layers by atmospheric pressure graphitization of silicon carbide. *Nature Materials* **8**, 203 (2009).
- [44] H. Matsui, F. Matsui, N. Maejima, T. Matsushita, H. Daimon, Stacking registry determination of graphene on the SiC(0001) by photoelectron holography. *Surface Science* **635**, 1 (2015).
- [45] J. Tersoff and D. R. Hamann, Theory and Application for the Scanning Tunneling Microscope. *Phys. Rev. Lett.* **50**, 1998 (1983).
- [46] C. J. Chen, Tunneling matrix elements in three-dimensional space: The derivative rule and the sum rule. *Phys. Rev. B* **42**, 8841 (1990).
- [47] L. Gross, N. Moll, F. Mohn, A. Curioni, G. Meyer, F. Hanke, M. Persson, High-resolution molecular imaging using a p-wave STM tip. *Phys. Rev. Lett.* **107**, 086101 (2011).
- [48] M. Ondráček, P. Pou, V. Rozsival, C. González, P. Jelínek, R. Pérez, Forces and Currents in Carbon Nanostructures: Are We Imaging Atoms? *Phys. Rev. Lett.* **106**, 176101 (2011).
- [49] M. P. Boneschanscher, J. van der Lit, Zh. Sun, I. Swart, P. Liljeroth, and D. Vanmaekelbergh, Quantitative Atomic Resolution Force Imaging on Epitaxial Graphene with Reactive and Nonreactive AFM Probes. *ACS Nano* **6**, 10216 (2012).
- [50] M. Emmrich, F. Huber, F. Pielmeier, J. Welker, Th. Hofmann, M. Schneiderbauer, D. Meuer, S. Polesya, S. Mankovsky, D. Ködderitzsch, H. Ebert, F.J. Giessibl, Subatomic resolution force microscopy reveals internal structure and adsorption sites of small iron clusters. *Science* **348**,

CONTENTS

42

- 308 (2015).
- [51] M. Dienwiebel, G.S. Verhoeven, N. Pradeep, J.W.M. Frenken, J.A. Heimberg, H.W. Zandbergen, Superlubricity of Graphite. *Phys. Rev. Lett.* **92**, 126101 (2014).
- [52] Personal communication Ruben Perez (last author of [48]) email Jan 19 2022: “Yes, we did see a change to an sp³ hybridization that contributes to make the tip-C atom interaction stronger. This happened with reactive tips (like metal tips) in the attractive force regime.”
- [53] J. Berwanger, S. Polesya, S. Mankovsky, H. Ebert, F.J. Giessibl, Atomically Resolved Chemical Reactivity of Small Fe Clusters. *Phys. Rev. Lett.* **124**, 096001 (2020).
- [54] S. Hembacher, F. J. Giessibl, J. Mannhart, C. F. Quate, Revealing the hidden atom in graphite by low-temperature atomic force microscopy, *Proc. Natl. Acad. Sci. U.S.A.* **100**, 12539 (2003).
- [55] J. Israelachvili, Intermolecular and Surface Forces, 3rd ed., Elsevier, Oxford (2011).
- [56] M. Ternes, C. González, C.P. Lutz, P. Hapala, F.J. Giessibl, P. Jelínek, A.J. Heinrich, Interplay of Conductance, Force, and Structural Change in Metallic Point Contacts. *Phys. Rev. Lett.* **106**, 016802 (2011).
- [57] The pronounced change in imaging characteristics caused by picking up a CO molecule on a metal tip and thus the creation of a CO terminated metal tip was discovered in 1997 by Bartels et al. in STM imaging [23]. When Gross et al. observed in 2009 that these tips provide excellent AFM images of pentacene [24], CO tips became standard in imaging organic molecules by AFM. In the STM channel, the p_x/p_y symmetry of the tip states leads to images that look like a Laplace filtered (and hence inverted) version of the charge density at the Fermi level. In the AFM channel, CO tips image essentially the total charge density by Pauli repulsion [68], yielding an AFM image of the graphene surface that looks very similar to an elementary calculation of the total charge density of graphite as suggested by [64] and presented in Fig. 3D of [54].
- [58] L. Gross, F. Mohn, N. Moll, G. Meyer, R. Ebel, W. M. Abdel-Mageed, M. Jaspars, Organic structure determination using atomic-resolution scanning probe microscopy. *Nature Chemistry* **2**, 821 (2010).
- [59] L. Gross, F. Mohn, N. Moll, B. Schuler, A. Criado, E. Guitian, D. Piena. A. Gourdon, G. Meyer, Bond-order Discrimination by Atomic Force Microscopy. *Science* **337**, 1326 (2012).
- [60] N. Pavlicek, B. Fleury, M. Neu, J. Niedenführ, C. Herranz-Lancho, M. Ruben, J. Repp, Atomic Force Microscopy Reveals Bistable Configurations of Dibenzo[a,h]thianthrene and their Interconversion Pathway. *Phys. Rev. Lett.* **108**, 086101 (2012).
- [61] The HF2 Lock-in amplifier we used allows to record six different higher orders such as a_2 to a_7 in parallel, however the Nanonis BP4 scan controller only allowed to record four more channels (in addition to tunneling current, frequency shift, drive amplitude, ...), therefore, Figure 23 only shows a_2 , a_3 , a_4 and a_5 . We have checked higher orders than 5 manually, and they did also not exceed the noise level.
- [62] P. Y. Huang, C. S. Ruiz-Vargas, A. M. van der Zande, W. S. Whitney, M. P. Levendorf, J. W. Kevek, S. Garg, J. S. Alden, C. J. Hustedt, Y. Zhu, J. Park, P. L. McEuen, D. A. Muller, Grains and grain boundaries in single-layer graphene atomic patchwork quilts. *Nature* **469**, 389 (2011).
- [63] M. Neu, N. Moll, L. Gross, G. Meyer, F. J. Giessibl, J. Repp, Image correction for atomic force microscopy images with functionalized tips. *Phys. Rev. B* **89**, 205407 (2014).
- [64] P. R. Wallace, The Band Structure of Graphite. *Physical Review* **71**, 622 (1947).
- [65] Prokop Hapala, Georgy Kichin, Christian Wagner, F. Stefan Tautz, Ruslan Temirov, Pavel Jelinek, Mechanism of high-resolution STM/AFM imaging with functionalized tips, *Phys. Rev. B* **90**, 085421 (2014).
- [66] A. J. Weymouth, T. Hofmann, F. J. Giessibl, Quantifying Molecular Stiffness and Interaction with Lateral Force Microscopy, *Science* **343**, 1120 (2014).
- [67] Guillaume Schull, Thomas Frederiksen, Mads Brandbyge, Richard Berndt, Passing Current through Touching Molecules. *Phys. Rev. Lett.* **103**, 206803 (2009).
- [68] N. Moll, L. Gross, F. Mohn, A. Curioni, G. Meyer, The mechanisms underlying the enhanced resolution of atomic force microscopy with functionalized tips. *New J. Phys.* **12**, 125020 (2010).

CONTENTS

43

- [69] M. Telychko, J. Berger, Z. Majzik, P. Jelínek, M. Švec, Graphene on SiC(0001) inspected by dynamic atomic force microscopy at room temperature. *Beilstein J. Nanotechnol.* **6**, 901 (2015).
- [70] D. Wastl, F. Speck, E. Wutscher, M. Ostler, T. Seyller, F.J. Giessibl, Observation of 4 nm Pitch Stripe Domains Formed by Exposing Graphene to Ambient Air. *ACS NANO* **7**, 10032 (2013).
- [71] Th. Hofmann, *Hochauflösende Rasterkraftmikroskopie auf Graphen und Kohlenmonoxid*, PhD thesis, University of Regensburg, doi: 10.5283/epub.29735 (2014).
- [72] G.K. Binnig, Atomic-Force Microscopy. *Physica Scripta* **T19**, 53 (1987).
- [73] E. Stolyarova, K. T. Rim, S. Ryu, J. Maultzsch, P. Kim, L. E. Brus, T. F. Heinz, M. S. Hybertsen, G. W. Flynn, High-resolution scanning tunneling microscopy imaging of mesoscopic graphene sheets on an insulating surface. *Proc. Natl. Acad. Sci. U.S.A.* **104**, 9209 (2007).

Accepted Manuscript