



Wintertime Saharan dust transport towards the Caribbean: an airborne lidar case study during EUREC⁴A

Manuel Gutleben^{1,2}, Silke Groß¹, Christian Heske¹, and Martin Wirth¹

¹Deutsches Zentrum für Luft- und Raumfahrt, Institut für Physik der Atmosphäre, Oberpfaffenhofen, Germany

²Meteorologisches Institut, Ludwig-Maximilians-Universität, Munich, Germany

Correspondence: Manuel Gutleben (manuel.gutleben@dlr.de)

Received: 24 January 2022 – Discussion started: 10 February 2022

Revised: 2 May 2022 – Accepted: 6 May 2022 – Published: 8 June 2022

Abstract. Wintertime Saharan dust plumes in the vicinity of Barbados are investigated by means of airborne lidar measurements. The measurements were conducted in the framework of the EUREC⁴A (Elucidating the Role of Cloud-Circulation Coupling in Climate) field experiment upstream the Caribbean island in January–February 2020. The combination of the water vapor differential absorption and high spectral resolution lidar techniques together with dropsonde measurements aboard the German HALO (High Altitude and Long-Range) research aircraft enable a detailed vertical and horizontal characterization of the measured dust plumes. In contrast to summertime dust transport, mineral dust aerosols were transported at lower altitudes and were always located below 3.5 km. Calculated backward trajectories affirm that the dust-laden layers have been transported in nearly constant low-level altitude over the North Atlantic Ocean. Only mixtures of dust particles with other aerosol species, i.e., biomass-burning aerosol from fires in West Africa and marine aerosol, were detected by the lidar. No pure mineral dust regimes were observed. Additionally, all the dust-laden air masses that were observed during EUREC⁴A came along with enhanced water vapor concentrations compared with the free atmosphere above. Such enhancements have already been observed during summertime and were found to have a great impact on radiative transfer and atmospheric stability.

1 Introduction

Mineral dust aerosol is known to be a major contributor to the earth's aerosol mass burden (Cakmur et al., 2006) and is estimated to contribute between 25 % and 30 % to the total aerosol optical depth (Tegen et al., 1997; Kinne et al., 2006). The greatest source region of mineral dust is the Sahara and its arid surrounding landscapes. From a comparison of 15 global aerosol models, Huneus et al. (2011) derived annual dust emissions from North Africa that range from 400 to 2200 Tg a⁻¹. This makes up roughly 50 % of the total global annual dust emission (1000–4000 Tg a⁻¹).

Once injected into the atmosphere, Saharan dust particles can be transported far away from their origin. While only 15 % of the total emitted dust load is transported north- and eastwards towards the Mediterranean and the Middle East

(e.g., Shao et al., 2011), almost 85 % of the dust burden gets carried south- and westwards over the Atlantic Ocean. Transatlantic transport routes vary throughout the year and depend on the large-scale synoptic situation (e.g., Ben-Ami et al., 2009; Tsamalis et al., 2013). During the winter months the Harmattan carries Saharan dust particles at low levels (< 3.5 km) southwestwards towards the Gulf of Guinea (Schepanski et al., 2009). Due to the southernmost position of Intertropical Convergence Zone (ITCZ) during this season, dust particles are then frequently transported towards the South American continent and the Amazon region (e.g., Yu et al., 2015). During boreal summer, however, strong solar insolation over the Sahara causes a deep boundary layer (e.g., Messenger et al., 2009) which can reach up to 6 km in altitude (\approx 500 hPa). This allows dust particles to be mixed upward to higher altitudes where they get caught by the trade winds.

Due to the northward shift of the ITCZ during boreal summer, they then get carried westwards as far as the Caribbean as well as Central and North America along a more northerly transportation route (e.g., Prospero and Carlson, 1972; Prospero et al., 2010). Summertime dust advection can frequently be observed in the Caribbean. During that time of the year the dust particles are usually advected in elevated and decoupled layers – so-called Saharan air layers (SALs; Prospero and Carlson, 1972; Carlson and Prospero, 1972). Wintertime dust plumes, however, reach the Caribbean less frequently and only in connection with favorable synoptic situations.

Transatlantic Saharan dust transport has been studied during several previous research campaigns, e.g., the Saharan Mineral Dust Experiments SAMUM 1 and 2 (Ansmann et al., 2011), the closure experiment SALTRACE (Saharan Aerosol Long-range Transport and Aerosol-Cloud-Interaction Experiment, Weinzierl et al., 2017) or the Next-Generation Aircraft Remote Sensing for Validation Studies II (Stevens et al., 2019). While observations during SAMUM 1 and 2 predominantly focused on the beginning of transatlantic dust transport near the North African coast (Ansmann et al., 2011; Groß et al., 2011, 2013), long-range-transported Saharan dust has been studied during SALTRACE and NARVAL-II on airborne (Gutleben et al., 2019a, b, 2020), shipborne (Rittmeister et al., 2017; Ansmann et al., 2017) and ground-based platforms (Groß et al., 2015; Haarig et al., 2017). In contrast to dust transport in elevated SALs during boreal summer, it was found that dust particles are mostly transported at low atmospheric levels during wintertime. It was also observed that they are sometimes mixed with other aerosol types like biomass-burning aerosols or marine aerosols in the marine boundary layer (MBL; e.g., Ansmann et al., 2009; Baars et al., 2011; Groß et al., 2011; Haarig et al., 2019).

In recent studies it was also shown that summertime SALs may come along with enhanced concentrations of water vapor compared with the surrounding dry free troposphere (Gutleben et al., 2019b, 2020; Ryder, 2021). It was shown that not the aerosol but the water vapor inside the SALs is the dominating driver for net radiative heating during transatlantic dust transport. In this way, water vapor associated with dust layers has the potential to modify the atmospheric stability and consequently to impact the evolution as well as macrophysical properties of shallow marine trade wind clouds.

In addition to that, the transportation of dust particles at low atmospheric levels within and/or atop of the MBL during wintertime implies aerosol radiative effects. The particles may not only have a direct effect on the evolution of shallow marine clouds via absorption and scattering, but also have an indirect effect as aerosols can act as cloud condensation nuclei and ice nucleating particles (Karydis et al., 2011; Bègue et al., 2015; DeMott et al., 2015; Boose et al., 2016).

Up to now, the concurrence of transatlantic Saharan dust and water vapor transport during boreal winter has never

been studied. In early 2020, extensive wintertime mineral dust plumes could be observed upstream the Caribbean island of Barbados during the EUREC⁴A (Elucidating the Role of Cloud-Circulation Coupling in Climate; Stevens et al., 2021) field experiment. Several research flights with the High Altitude and Long Range Research Aircraft (HALO; Krautstrunk and Giez, 2012) were carried out over this region and an extensive lidar and dropsonde data set was collected. This unique data set now enables a detailed investigation of macrophysical properties of the observed long-range-transported dust plumes and the state of the atmosphere.

This paper is structured as follows: in Sect. 2 an overview of the EUREC⁴A project as well as the capabilities and features of the airborne lidar system WALES (Water Vapor Lidar Experiment in Space; Wirth et al., 2009) are introduced. Moreover, an explanation of how lidar data can be used to separate the contributions of individual aerosol species in an aerosol mixture is outlined. A detailed analysis of the observed Saharan dust events by means of airborne lidar and dropsonde measurements is presented in Sect. 3. Finally, in Sect. 4, the results are discussed and the study is concluded.

2 Data and methods

2.1 HALO research flights during EUREC⁴A

The EUREC⁴A field campaign aimed at investigating the driving factors for the evolution of trade wind cumulus clouds in the winter trades (Stevens et al., 2021). As one of several employed research platforms during EUREC⁴A, the German high-flying research aircraft HALO conducted remote sensing measurements east of the Caribbean island of Barbados (Konow et al., 2021). In the period from 18 January to 18 February 2020, the modified Gulfstream G550 research aircraft performed a total of 15 scientific flights (13 local flights from and to Barbados and two transfer flights from and to Germany). An overview of the HALO flight tracks is shown in Fig. 1. The circular flight patterns of the research flights were flown for dropsonde-based analyses of the respective prevailing large-scale divergences (Bony and Stevens, 2019).

On 3 measurement days, Saharan mineral dust was advected to the research area, i.e., on 30 January 2020 during HALO-0130, on 31 January 2020 during HALO-0131 and on 2 February 2020 during HALO-0202. Collected airborne lidar data sets during measurement flights on these days enable a characterization of long-range-transported African dust plumes during EUREC⁴A, although the flights' tracks have not been specifically designed for dust observations. As dust aerosols could only be measured in this 4 d period, it is likely that the observed aerosol originated from the very same African dust outbreak. The enhanced total column aerosol optical depth (AOD) at 550 nm over the dust-affected research areas was captured by MODIS (Moderate Resolution Imaging Spectroradiometer) and is shown in

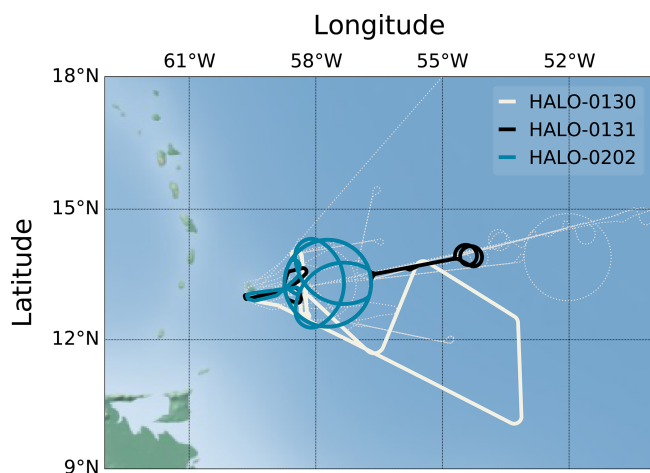


Figure 1. The HALO flight tracks during EUREC⁴A. Flights over long-range-transported Saharan mineral dust are colored. The thin dashed white lines indicate the remaining dust-free research flight tracks.

Fig. 2. MODIS is a spaceborne imaging sensor which operates at 36 spectral bands from 0.4 to 14.4 μm wavelength. While on 2 February the AOD in the research area ranged from 0.2 to 0.4, it was higher during the 2 other days and took maximum values greater than 0.6. The African origin of the aerosol plumes is also verified by calculated backward trajectories using the Hybrid Single Particle Lagrangian Integrated Trajectory model (HYSPLIT; Stein et al., 2015) with NCEP GDAS (National Centers for Environmental Prediction Global Data Assimilation System) input data.

In total, approximately 18.5 h of lidar data could be collected during the three flights. Additionally, a total of 164 dropsondes were launched (Vaisala RD-41; George et al., 2021; Vaisala, 2020); 157 of them worked properly and collected thermodynamic data from aircraft to ground level.

2.2 The WALES lidar instrument aboard HALO

During EUREC⁴A the WALES lidar instrument (Wirth et al., 2009) was operated aboard HALO. It is an airborne differential absorption lidar (DIAL) system for profiling water vapor mass mixing ratios (r_m) with depolarization and high spectral resolution lidar capabilities (HSRL; Esselborn et al., 2008) for vertically resolved measurements of aerosol optical properties.

The DIAL module operates at four wavelengths (three online and one offline wavelength) around the H_2O –absorption band at 935 nm. Due to its high pulse-repetition rate of 0.01 s between online and offline pulses, it enables horizontally and vertically highly resolved measurements of r_m with relative uncertainties of less than 5 % (Kiemle et al., 2008). To obtain the high pulse-repetition rate, two Q -switched Nd:YAG (neodymium-doped yttrium aluminum garnet; Nd:Y₃Al₅O₁₂) ring lasers, which generate pulses

at 1064 nm wavelength, are operated temporally interleaved. The required frequencies for DIAL measurements are generated via frequency doubling of parts of the emitted pulses and subsequent pumping of injection-seeded optical parametric oscillators (Mahnke et al., 2007).

In addition to the DIAL capability, the integrated HSRL module and depolarization sensitive channels allow for highly resolved measurements of particle linear depolarization ratios (δ_p), backscatter ratios ($R = 1 + \beta_p/\beta_m$, with β_p and β_m being the particle backscatter and molecular backscatter coefficients), particle extinction coefficients (α_p) as well as the lidar ratios (S) – all at 532 nm wavelength. Relative uncertainties in measurements of δ_p , R and α_p are 10 %–16 %, 5 % and 10 %–20 %, respectively (Esselborn et al., 2008).

WALES data are spatially and temporally averaged to improve the signal to noise ratio. At typical aircraft speed of 200 m s^{-1} , the horizontal resolutions amount to 3000 m (DIAL) and 200 m (HSRL). The vertical resolution is 15 m and measurements are taken from aircraft to ground level. Since measurements of the WALES DIAL are masked at altitudes < 200 m (due to contamination from surface echoes), no water vapor measurements near ground level are available.

2.3 Lidar-based aerosol-type separation

For an in-depth investigation of the predominating aerosol mixtures during EUREC⁴A (i.e., possible mixtures of transported mineral dust with marine aerosol or biomass-burning aerosol), the well-established lidar-based aerosol-separation technique for two-component aerosol mixtures shown by Tesche et al. (2009) and Groß et al. (2011) is applied. It allows for the calculation of the contribution (in percent) of mineral dust to both the measured particle linear depolarization ratio δ_p and the measured lidar ratio S .

The percentage that Saharan mineral dust is contributing to a measured particle linear depolarization ratio of a two-component aerosol mixture δ_p with biomass-burning aerosol or marine aerosol is calculated as follows:

$$[\%_{\delta}] = \frac{D_B}{D_B + D_A}, \quad (1)$$

with the coefficients D_A and D_B ,

$$D_A = \frac{\delta_{p,DU} - \delta_p}{S_{DU}(1 + \delta_{p,DU})}; \quad (2)$$

$$D_B = \frac{\delta_p - \delta_{p,BB|MA}}{S_{BB|MA}(1 + \delta_{p,BB|MA})}. \quad (3)$$

Here, S_{DU} and $S_{BB|MA}$ are the known lidar ratios of Saharan mineral dust (50 ± 4 ; Groß et al., 2011, 2013) as well as of aged tropospheric biomass-burning aerosol (72.5 ± 7.5 ; Haerig et al., 2018) and marine aerosol (18 ± 5 ; Groß et al., 2013). $\delta_{p,DU}$ and $\delta_{p,BB|MA}$ are the corresponding known

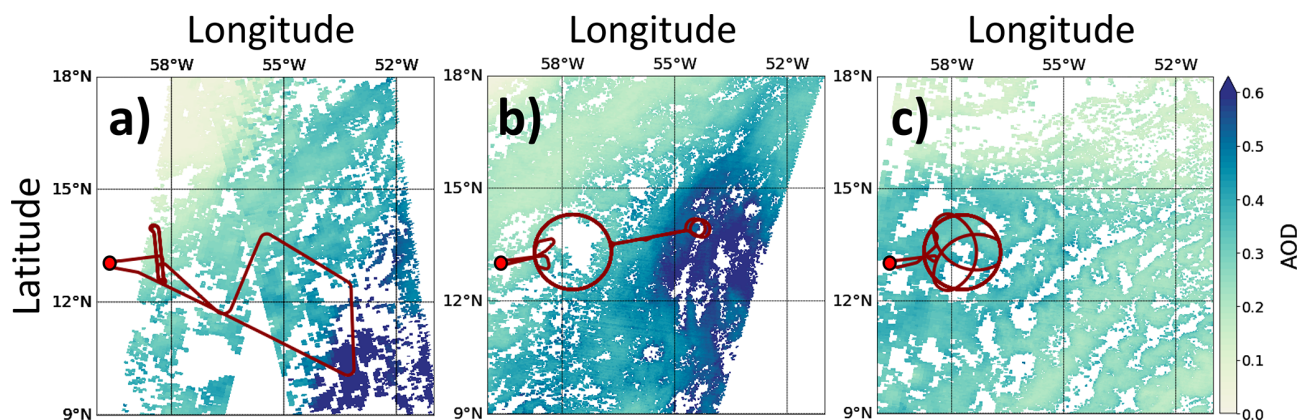


Figure 2. The HALO flight tracks of the three research flights over long-range-transported Saharan dust aerosol on 30 January 2020 (a), 31 January 2020 (b) and 2 February 2020 (c) on top of MODIS (Moderate Resolution Imaging Spectroradiometer) satellite imagery of aerosol optical depth (AOD) at 550 nm. All MODIS images were taken between 14:00 and 18:00 UTC. The Grantley Adams International Airport on Barbados is marked with red dots.

Table 1. Overview of the conducted research flights over Saharan dust aerosol during EUREC⁴A in 2020 including dates, times of take-off and landing, total duration as well as number of launched dropsondes (times given in UTC; note: Atlantic Standard Time = UTC−4).

ID	Date	Take-off	Landing	Duration	Sondes
HALO-0130	30 Jan	11:19	15:09	04:50 h	4
HALO-0131	31 Jan	14:07	00:10 (+1 d)	10:03 h	74
HALO-0202	02 Jan	11:28	20:15	08:47 h	89

particle linear depolarization ratios (Saharan mineral dust: $27 \pm 2\%$; aged biomass-burning aerosol: $< 3\%$; marine aerosol: $3 \pm 1\%$; Tesche et al., 2009; Groß et al., 2011, 2013; Haerig et al., 2017, 2018). For S the percentage is calculated using,

$$[\%_S] = \frac{S_{\text{BB|MA}} (S_{\text{DU}} - S)}{S (S_{\text{BB|MA}} - S_{\text{DU}})} \quad (4)$$

3 Results

3.1 Saharan dust research flights during EUREC⁴A

Transported Saharan mineral dust was present in the research area on 3 measurement days. Times of take-off and landing of the flights conducted on these days, as well as the number of launched dropsondes, are summarized in Table 1. In the following, a detailed overview of the measurements during these three flights is given.

- HALO-0130 on 30 January 2020:* An objective of this relatively short research flight was an under-flight of the GPM (Global Precipitation Measurement Mission; Hou et al., 2014) satellite for concurrent airborne and spaceborne radar and radiometer measurements of subtropical clouds. For this purpose the flight track was designed to lead to a region in the southeast of Barbados, where

long-range-transported Saharan dust aerosol prevailed. The time–height cross section of δ_p highlights a highly depolarizing aerosol regime which ranged from approximately 0.7 to 3.5 km altitude during the whole flight (Fig. 3a). Pure and non-mixed long-range-transported Saharan mineral dust aerosol usually takes typical values around 30 % (Freudenthaler et al., 2009; Groß et al., 2013). This value does not change with transatlantic transportation (Groß et al., 2015). However, δ_p between 0.7 and 3.5 km altitude took slightly smaller values that ranged from 15 % to 30 %. Depolarization ratios in this range are typical for aerosol regimes where mineral dust particles are mixed with less depolarizing particles, i.e., marine aerosol or biomass-burning aerosol (Tesche et al., 2009, 2011). Mixing of different aerosol types is also evident in derived lidar ratios. From ground level to approximately 0.7 km altitude they took values around 30 sr. In intermediate altitudes (0.7–2.0 km) where δ_p took values around 15 % lidar ratios were around 40 sr. At the top levels of the depolarizing layer (2.0–3.5 km) where δ_p was highest, the derived lidar ratios were also highest and took values around 60 sr. This is a clear indication that at the top levels of the aerosol layer highly absorbing biomass-burning aerosols (S of 72.5 ± 7.5 ; Haerig et al., 2018) are mixed with mineral dust particles (typical S of 50 ± 4). On the other hand, at the

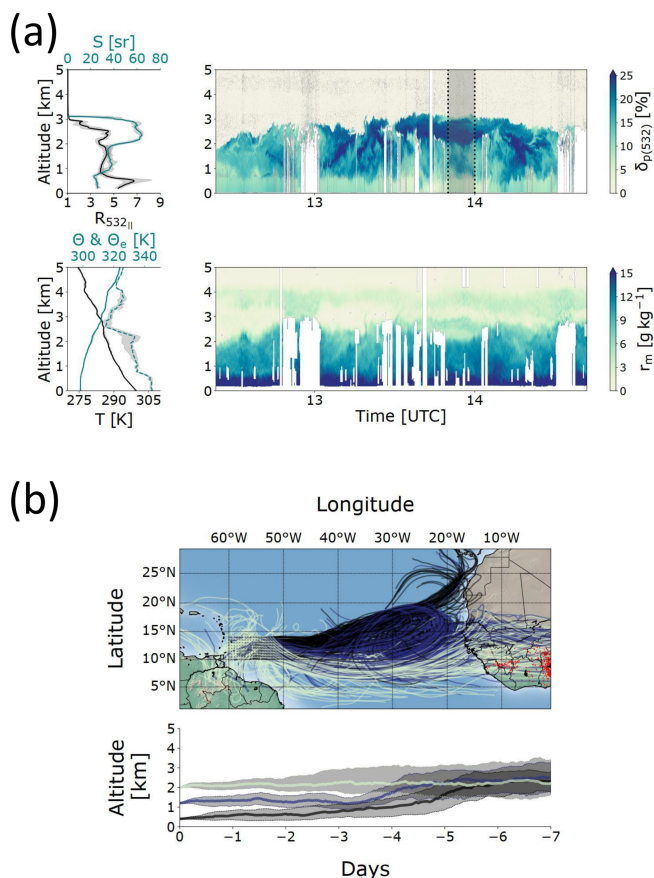


Figure 3. (a) Overview of measured profiles during the HALO-0130 research flight as measured by lidar and dropsondes. The left panels show median profiles of 532 nm backscatter ratio ($R_{||}$, black), lidar ratio (S , teal), temperature (T , black), equivalent potential temperature (Θ_e , teal, dashed) and potential temperature (Θ , teal, solid) during the flight. The profiles of $R_{||}$ and S refer to the gray shaded regions in the respective right panel. Shaded regions indicate the inter-quartile region. The right panels show the measured profiles of the 532 nm particle linear depolarization ratio (δ_p) and water vapor mass mixing ratio (r_m). (b) The 7 d backward trajectories of the air mass that was sampled during the HALO-0130 research flight. Trajectories are indicated for starting points in 0.4 km (black), 1.2 km (blue) and 2.0 km (light green) altitude that are regularly distributed over the research areas (0.5° spacing) and are calculated using the Hybrid Single Particle Lagrangian Integrated Trajectory model (HYSPLIT). Red markers indicate detected thermal anomalies related to active fires detected by the Visible Infrared Imaging Radiometer Suite (VIIRS) 7 d before the respective research flights. The lower panels show the median altitude of the backward trajectories. Shaded regions indicate the inter-quartile region.

lower levels of the aerosol layer, values of δ_p and S point towards a mixture of marine aerosols (S of 18 ± 5) with dust particles (Ben-Ami et al., 2009; Groß et al., 2011).

Ensembles of 7 d backward trajectories that are calculated utilizing HYSPLIT show that the sampled dust-containing aerosol layer traveled for 1 week at a nearly constant altitude from Africa towards the Caribbean (Fig. 3b). Thermal anomalies derived from the Visible Infrared Imaging Radiometer Suite (VIIRS) indicate strong activity of fires in West Africa. The low-latitude transportation route of the aerosol layer ($5\text{--}15^\circ$ N) together with these fires favored the entrainment of biomass-burning aerosols into the boundary layer. A detailed discussion and analysis of the observed aerosol mixtures is given in Sect. 3.2.

During HALO-0130, air masses at low atmospheric levels (trajectories starting at 0.4 km altitude) took a more northerly route over the North Atlantic Ocean ($10\text{--}15^\circ$ N) than the dust-laden air masses at 1.2 and 2.0 km. This could explain why the MBL at lowermost altitudes (< 0.7 km) is characterized by relatively small δ_p and S compared with the overlying atmosphere. The ~ 0.7 km altitude marked a transition inside the MBL. The MBL changed from a moist and neutrally stratified convective boundary layer near the surface ($r_m \sim 18 \text{ g kg}^{-1}$; $\Theta = \text{const.}$) to a dust-laden, drier and more stable layer with lower wind speeds ($r_m = 4\text{--}10 \text{ g kg}^{-1}$; $d\Theta/dz \geq 0$). This layer is then capped at approximately 2.5 km altitude by the trade wind inversion (TWI). The TWI was characterized by a hydrolapse, gradients in wind speed as well as temperature and the transition from an aerosol-laden to an aerosol-free atmosphere.

- b. *HALO-0131 on 31 January 2020*: HALO's second dust flight aimed at measurements of large-scale divergence from dropsondes. This is why a total of seven circles were flown upstream of Barbados and dropsondes were launched at a very high rate. After 3.5 circles a short excursion towards the Northwest Tropical Atlantic Station – a meteorological buoy – was performed. The sampled atmosphere below the circles was characterized by an almost dust-free region in the northwest and a dusty regime in the southeast (see Fig. 2b). As a result the lidar depolarization data show recurring features (Fig. 4a). Highly depolarizing and dust-laden regions were observed between 0.7 and 3 km altitude ($15\% < \delta_p < 30\%$), with the greatest depolarization ratios at 2 km altitude. At these altitudes the lidar ratio S took values around 60 sr, indicating the presence of both mineral dust and biomass-burning aerosol. At lower levels (0.0–0.7 km) S was smaller and around 20 sr. This points towards an additional contribution of marine aerosol at these altitudes.

Similar to HALO-0130, backward trajectories with starting points at low altitudes originate from more northern latitudes than the trajectories starting from altitudes affected by long-range-transported Saharan mineral dust, i.e., at 1.2 and 2.0 km altitude (Fig. 4b). The low latitudes together with low transportation altitudes can again explain that not only mineral dust, but also biomass-burning aerosol from West African fires, marine aerosol and Saharan mineral dust, were observed. This is substantiated by the evident forest fires detected from VIIRS thermal anomalies. The MBL was characterized by a moist and well-mixed convective layer from the surface to approximately 0.7 km altitude ($r_m \approx 18 \text{ g kg}^{-1}$; $\Theta = \text{const.}$) and a dryer, calmer and statically more stable layer from 0.7 to 2.2 km which was capped by the TWI. A relatively moist and dust-containing aerosol layer was observed atop of the MBL. It was vertically extending for roughly 1 km and showed water vapor mass mixing ratios of approximately 4 g kg^{-1} .

- c. *HALO-0202 on 2 February 2020*: Circular flight patterns for large-scale divergence measurements have also been the focus of this research flight. For an additional characterization of the cloud and aerosol scene in the interior of the circles a clover pattern was flown. As a result WALES lidar measurements during this research flight show recurring features (Fig. 5a).

The MBL was again characterized by a well-mixed convective layer from the surface to approximately 0.7 km altitude ($\Theta = \text{const.}$). However, water vapor mixing ratios were slightly smaller compared with the other two flights ($\sim 16 \text{ g kg}^{-1}$). The MBL was capped at approximately 2.5 km altitude by a pronounced TWI. Depolarizing aerosol was found along the whole vertical extent of the MBL. However, δ_p values were highest at the very top of the MBL ($\sim 30\%$ at 2.3 km altitude). Lidar ratios again indicate that the aerosol layer was characterized by a particle mixture of mineral dust aerosol, aged biomass-burning aerosol and marine aerosol. S took the highest values inside the aerosol layer atop the MBL ($\sim 60 \text{ sr}$) and was lowest near ground level ($\sim 30 \text{ sr}$). This indicates that the contribution of biomass-burning aerosol to the aerosol mixture was greatest at the top levels and marine aerosol mostly contributed to the aerosol mixture at lower levels. Regions inside the MBL that were impacted by this aerosol mixture came along with reduced atmospheric moisture content and were characterized by small water vapor mixing ratios that ranged from 5 to 10 g kg^{-1} .

The 7 d backward trajectories for this research flight again indicate that the dust-laden air masses at 1.2 and 2.0 km altitude traveled at nearly constant altitude and that they took a southerly route that favored mixing processes with biomass-burning aerosols and marine aerosols (Fig. 5b).

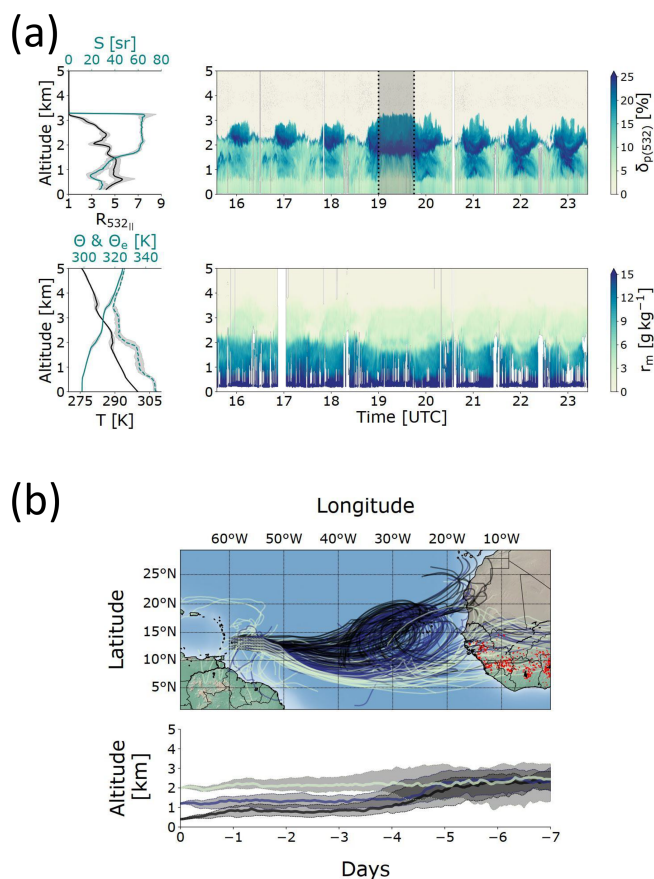


Figure 4. Same as Fig. 3 but for HALO-0131.

3.2 Aerosol and water vapor composition of the observed dust layers

Measurements of lidar ratios and particle linear depolarization ratios during the three research flights over transported Saharan mineral dust indicated that dust particles have been mixed together with aged biomass-burning and marine aerosols. An aerosol regime containing only mineral dust particles was never observed during EUREC⁴A. To investigate these mixed regimes in more detail, the contribution of Saharan mineral dust aerosol to the aerosol mixture is calculated.

Using the equations presented in Sect. 2.3, one can derive mixing lines between the pure Saharan mineral dust aerosol regime and the marine and biomass-burning aerosol regime in a two-dimensional space of S and δ_p (Fig. 6). The joint histogram of the lidar measurements during the three flights over long-range-transported Saharan mineral dust aerosol fits well to the calculated mixing lines. Maximum frequencies of measurements correlate very well with the mixing lines between mineral dust and biomass-burning aerosol as well as mineral dust and marine aerosol derived from the calculations. The histogram also shows that biomass-burning aerosols are not mixed to low atmospheric levels as this

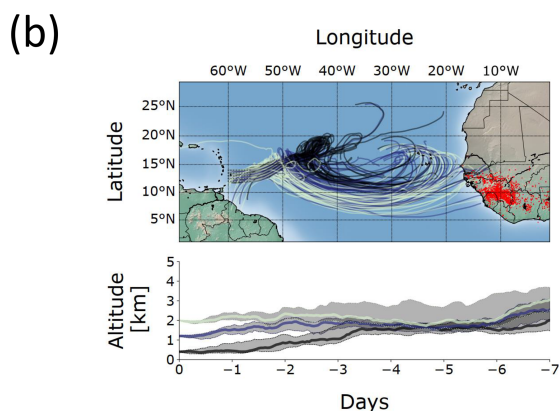
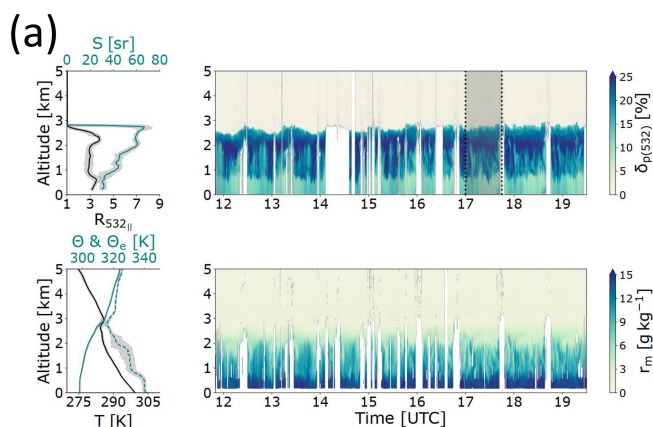


Figure 5. Same as Fig. 3 but for HALO-0202.

would cause a shift of the mixing line between marine aerosol and dust aerosol towards higher lidar ratios. Mineral dust contributions between 40 % and 80 % were observed most frequently in mixtures of marine aerosol with dust aerosol (MA–DU). At higher atmospheric levels mineral dust mostly contributed between 60 % and 80 % to the mixture of biomass-burning aerosol and dust aerosol (BB–DU).

Gutleben et al. (2019a, 2020) observed enhanced water vapor concentrations of approximately 4 g kg^{-1} in elevated and long-range-transported SALs compared with the surrounding atmosphere during the boreal summer months. One objective of the lidar measurements during EUREC⁴A is to answer the question of whether this is also the case for transatlantic dust transport during the boreal winter season.

When looking at the individual lidar curtains of the three research flights one can already identify the slightly enhanced water vapor mass concentrations compared with the dry free troposphere in regions of highest δ_p . Measurements during HALO-0131 and HALO-0202 highlight that the regions of maximum δ_p – which are associated with a great mineral dust loading – on top of the MBLs are not dry, but carry water vapor around 4 g kg^{-1} .

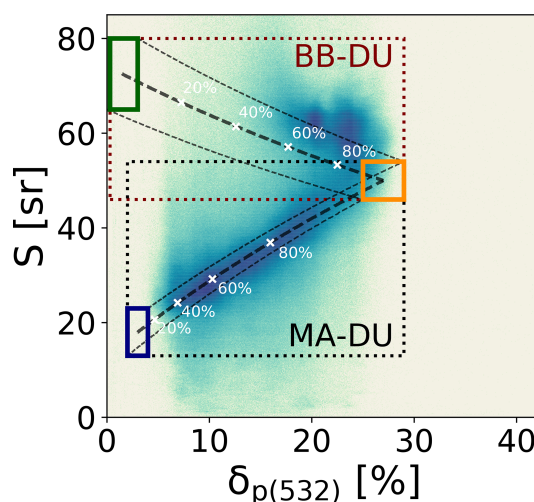


Figure 6. Two-dimensional histogram showing the joint distribution of measured particle linear depolarization (δ_p) and lidar ratios (S) during the three research flights over long-range-transported Saharan mineral dust. Solid rectangles mark the typical positions of the pure aerosol regimes: marine aerosol (MA, blue), transported Saharan mineral dust (DU, orange) and biomass-burning aerosol (BB, green). The dashed rectangles indicate the mixing regimes of biomass-burning aerosols with transported Saharan dust aerosols (BB-DU, maroon) as well as of marine aerosols with transported Saharan dust aerosols (MA-DU, blue). Gray lines indicate the calculated mixing lines (dashed: mean, solid: \pm standard deviation) of the two aerosol mixtures MA-DU and BB-DU. White crosses and percentages indicate the contribution of dust to δ_p of the respective two-component mixtures. The histogram is normalized to the maximum bin count.

This can also be seen in the joint distributions of r_m with δ_p and S (see Fig. 7). It indicates that regions affected by mineral dust are not completely dry, but instead always are accompanied by enhanced water vapor concentrations. Only in mixed regions, where biomass-burning aerosol affects the aerosol mixture ($\delta_p \approx 20 \%$; $S \approx 60 \text{ sr}$), do water vapor mixing ratios drop to values smaller than 4 g kg^{-1} . In the lower MBL, where a mixture of mineral dust with marine aerosol predominates, water vapor concentrations are high in general and take values between 8 and 18 g kg^{-1} .

4 Discussion and conclusions

While during the summer months Saharan dust particles are predominantly transported westwards in SALs at altitudes as great as 6 km (e.g., Prospero and Carlson, 1972; Prospero et al., 2010), Saharan dust transport in the winter months happens at lower atmospheric levels (e.g., Ansmann et al., 2009; Groß et al., 2011; Tesche et al., 2011). This agrees well with the findings in this study, as mineral dust particles were never observed in altitudes higher than $\sim 3.5 \text{ km}$. Low-level transport also favors mixing processes of mineral dust particles with other aerosol species like biomass-burning aerosol or

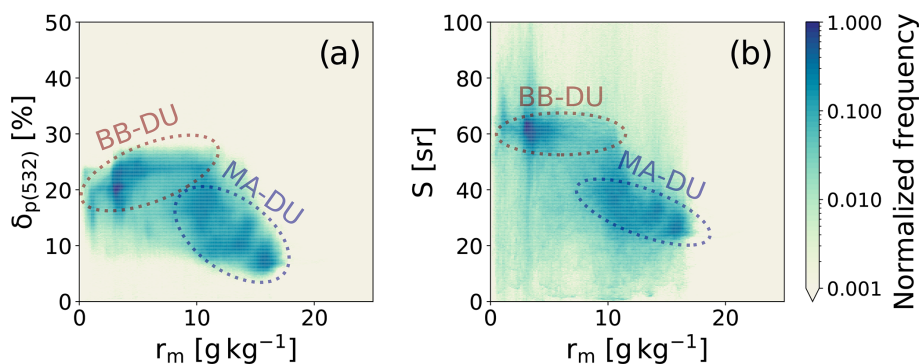


Figure 7. Two-dimensional histograms showing the joint frequency distribution of measured particle linear depolarization δ_p (a) and lidar ratios S (b) with simultaneously measured water vapor mass mixing ratios r_m during the three research flights over long-range-transported Saharan mineral dust. The dashed ellipses indicate an outline of the mixing regimes of aged biomass-burning aerosols with transported Saharan dust aerosols (BB–DU, maroon) as well as of marine aerosols with transported Saharan dust aerosols (MA–DU, blue). The histograms are normalized to their respective maximum bin count.

marine aerosol. As a consequence, pure dust aerosol regimes were never observed during EUREC⁴A and mineral dust particles could only be observed in mixed aerosol regimes. At lowermost altitudes inside the MBL the dust particles were predominantly mixed with marine aerosol. Above the MBL in altitudes from 2 to 3.5 km the dust particles were mixed with biomass-burning aerosol from fires in West Africa.

During their travel over the Atlantic Ocean these dusty aerosol regimes can impact the earth’s radiation budget by directly interacting with radiation via absorption and scattering, by changing cloud microphysical properties or by modifying the atmospheric stratification. However, up to now the radiative impact of long-range Saharan mineral dust transport over the Atlantic Ocean during boreal winter has never been investigated in detail, because necessary highly resolved observations of the vertical and horizontal aerosol distribution were missing. For summertime transport Gutleben et al. (2019b, 2020) highlighted that not the aerosol, but rather the water vapor embedded in long-range-transported SALs, is the dominant driver for radiative heating and the subsequent modification of the atmospheric stability. They used a radiative transfer model together with airborne lidar data collected during NARVAL-II (Next-Generation Aircraft Remote Sensing for Validation Studies II) for their calculation. During summertime the dust transport usually occurs in elevated layers. Due to this spatial separation of the different aerosol layers, the impact of enhanced concentrations of water vapor in SALs on atmospheric heating could easily be quantified. However, wintertime low-level transport – as observed during EUREC⁴A – hampers such a separation as the water vapor concentration inside the MBL is high in general. In addition, the indirect radiative effect of Saharan mineral dust and biomass-burning aerosols (i.e., the modification of marine cloud microphysics by aerosol particles) has to be considered in future simulations of radiative transfer in the winter season. Haariq et al. (2019) demonstrated that smoke

particles play a crucial role for cloud condensation especially during boreal winter, as they dominate the concentration of available cloud condensation nuclei in the mixture. Moreover, the potential of mixed dust aerosol regimes during wintertime transport for ice nucleation should be investigated in future studies.

This study highlights the characteristics of the observed dusty aerosol layers during EUREC⁴A. Although it is based on data collected during only three measurement flights, enhanced water vapor concentrations could be linked to the dust-laden aerosol layers for the first time. In the near future the composition of the dust layers and their radiative impact on the subtropical environment should be investigated in more detail. Finally, it is highly recommended that future and ongoing analyses with focus on radiative transfer, cloud physics or cloud occurrence based on observations during EUREC⁴A consider the impacts of the pronounced aerosol layers described in this paper.

Data availability. The data used in this publication were gathered in the EUREC4A field campaign and are made available through the Institute for Atmospheric Physics of the German Aerospace Center in the HALO database (<https://doi.org/10.17616/R39Q0T>, German Aerospace Center, 2016).

Author contributions. MG, SG and MW contributed in carrying out the airborne measurements during the EUREC⁴A field campaign. Initial lidar data processing was performed by MW. MG and CH performed all analytic computations and analyzed the measured data set. MG took the lead in writing the manuscript under ongoing consultation with SG. All authors discussed and reviewed the findings and contributed to the final manuscript.

Competing interests. The contact author has declared that neither they nor their co-authors have any competing interests.

Disclaimer. Publisher's note: Copernicus Publications remains neutral with regard to jurisdictional claims in published maps and institutional affiliations.

Acknowledgements. The authors thank the staff members of the German Aerospace Center (DLR) HALO aircraft from DLR Flight Experiments for preparing and performing the successful measurement flights.

Financial support. EUREC⁴A is funded with support of the European Research Council (ERC), the Max Planck Society (MPG), the German Research Foundation (DFG), the German Meteorological Weather Service (DWD) and the German Aerospace Center (DLR).

The article processing charges for this open-access publication were covered by the German Aerospace Center (DLR).

Review statement. This paper was edited by Farahnaz Khosrawi and reviewed by two anonymous referees.

References

- Ansmann, A., Baars, H., Tesche, M., Müller, D., Althausen, D., Engelmann, R., Pauliquevis, T., and Artaxo, P.: Dust and smoke transport from Africa to South America: Lidar profiling over Cape Verde and the Amazon rainforest, *Geophys. Res. Lett.*, 36, L11802, <https://doi.org/10.1029/2009gl037923>, 2009.
- Ansmann, A., Petzold, A., Kandler, K., Tegen, I., Wendisch, M., Müller, D., Weinzierl, B., Müller, T., and Heintzenberg, J.: Saharan Mineral Dust Experiments SAMUM-1 and SAMUM-2: what have we learned?, *Tellus B*, 63, 403–429, <https://doi.org/10.1111/j.1600-0889.2011.00555.x>, 2011.
- Ansmann, A., Rittmeister, F., Engelmann, R., Basart, S., Jorba, O., Spyrou, C., Remy, S., Skupin, A., Baars, H., Seifert, P., Senf, F., and Kanitz, T.: Profiling of Saharan dust from the Caribbean to western Africa – Part 2: Shipborne lidar measurements versus forecasts, *Atmos. Chem. Phys.*, 17, 14987–15006, <https://doi.org/10.5194/acp-17-14987-2017>, 2017.
- Baars, H., Ansmann, A., Althausen, D., Engelmann, R., Artaxo, P., Pauliquevis, T., and Souza, R.: Further evidence for significant smoke transport from Africa to Amazonia, *Geophys. Res. Lett.*, 38, L20802, <https://doi.org/10.1029/2011gl049200>, 2011.
- Bègue, N., Tulet, P., Pelon, J., Aouizerats, B., Berger, A., and Schwarzenboeck, A.: Aerosol processing and CCN formation of an intense Saharan dust plume during the EU-CAARI 2008 campaign, *Atmos. Chem. Phys.*, 15, 3497–3516, <https://doi.org/10.5194/acp-15-3497-2015>, 2015.
- Ben-Ami, Y., Koren, I., and Altaratz, O.: Patterns of North African dust transport over the Atlantic: winter vs. summer, based on CALIPSO first year data, *Atmos. Chem. Phys.*, 9, 7867–7875, <https://doi.org/10.5194/acp-9-7867-2009>, 2009.
- Bony, S. and Stevens, B.: Measuring Area-Averaged Vertical Motions with Dropsondes, *J. Atmos. Sci.*, 76, 767–783, <https://doi.org/10.1175/jas-d-18-0141.1>, 2019.
- Boose, Y., Sierau, B., García, M. I., Rodríguez, S., Alastuey, A., Linke, C., Schnaiter, M., Kupiszewski, P., Kanji, Z. A., and Lohmann, U.: Ice nucleating particles in the Saharan air layer, *Atmos. Chem. Phys.*, 16, 9067–9087, <https://doi.org/10.5194/acp-16-9067-2016>, 2016.
- Cakmur, R. V., Miller, R. L., Perlwitz, J., Geogdzhayev, I. V., Ginoux, P., Koch, D., Kohfeld, K. E., Tegen, I., and Zender, C. S.: Constraining the magnitude of the global dust cycle by minimizing the difference between a model and observations, *J. Geophys. Res.*, 111, D06207, <https://doi.org/10.1029/2005jd005791>, 2006.
- Carlson, T. N. and Prospero, J. M.: The Large-Scale Movement of Saharan Air Outbreaks over the northern Equatorial Atlantic, *J. Appl. Meteorol.*, 11, 283–297, [https://doi.org/10.1175/1520-0450\(1972\)011<0283:TLSMOS>2.0.CO;2](https://doi.org/10.1175/1520-0450(1972)011<0283:TLSMOS>2.0.CO;2), 1972.
- DeMott, P. J., Prenni, A. J., McMeeking, G. R., Sullivan, R. C., Peters, M. D., Tobo, Y., Niemand, M., Möhler, O., Snider, J. R., Wang, Z., and Kreidenweis, S. M.: Integrating laboratory and field data to quantify the immersion freezing ice nucleation activity of mineral dust particles, *Atmos. Chem. Phys.*, 15, 393–409, <https://doi.org/10.5194/acp-15-393-2015>, 2015.
- Esselborn, M., Wirth, M., Fix, A., Tesche, M., and Ehret, G.: Airborne high spectral resolution lidar for measuring aerosol extinction and backscatter coefficients, *Appl. Opt.*, 47, 346–358, <https://doi.org/10.1364/AO.47.000346>, 2008.
- Freudenthaler, V., Esselborn, M., Wiegner, M., Heese, B., Tesche, M., Ansmann, A., Müller, D., Althausen, D., Wirth, M., Fix, A., Ehret, G., Knippertz, P., Toledano, C., Gasteiger, J., Garhammer, M., and Seefeldner, M.: Depolarization ratio profiling at several wavelengths in pure Saharan dust during SAMUM 2006, *Tellus B*, 61, 165–179, <https://doi.org/10.1111/j.1600-0889.2008.00396.x>, 2009.
- George, G., Stevens, B., Bony, S., Pincus, R., Fairall, C., Schulz, H., Kölling, T., Kalen, Q. T., Klingebiel, M., Konow, H., Lundry, A., Prange, M., and Radtke, J.: JOANNE: Joint dropsonde Observations of the Atmosphere in tropical North Atlantic mesoscale Environments, *Earth Syst. Sci. Data*, 13, 5253–5272, <https://doi.org/10.5194/essd-13-5253-2021>, 2021.
- German Aerospace Center: HALO database, [dataset], <https://doi.org/10.17616/R39Q0T>, 2016.
- Groß, S., Tesche, M., Freudenthaler, V., Toledano, C., Wiegner, M., Ansmann, A., Althausen, D., and Seefeldner, M.: Characterization of Saharan dust, marine aerosols and mixtures of biomass-burning aerosols and dust by means of multi-wavelength depolarization and Raman lidar measurements during SAMUM 2, *Tellus B*, 63, 706–724, <https://doi.org/10.1111/j.1600-0889.2011.00556.x>, 2011.
- Groß, S., Esselborn, M., Weinzierl, B., Wirth, M., Fix, A., and Petzold, A.: Aerosol classification by airborne high spectral resolution lidar observations, *Atmos. Chem. Phys.*, 13, 2487–2505, <https://doi.org/10.5194/acp-13-2487-2013>, 2013.
- Groß, S., Freudenthaler, V., Schepanski, K., Toledano, C., Schäfler, A., Ansmann, A., and Weinzierl, B.: Optical properties of long-range transported Saharan dust over Barbados as measured by dual-wavelength depolarization Raman

- lidar measurements, *Atmos. Chem. Phys.*, 15, 11067–11080, <https://doi.org/10.5194/acp-15-11067-2015>, 2015.
- Gutleben, M., Groß, S., and Wirth, M.: Cloud macro-physical properties in Saharan-dust-laden and dust-free North Atlantic trade wind regimes: a lidar case study, *Atmos. Chem. Phys.*, 19, 10659–10673, <https://doi.org/10.5194/acp-19-10659-2019>, 2019a.
- Gutleben, M., Groß, S., Wirth, M., Emde, C., and Mayer, B.: Impacts of water vapor on Saharan Air Layer radiative heating, *Geophys. Res. Lett.*, 46, 14854–14862, <https://doi.org/10.1029/2019GL085344>, 2019b.
- Gutleben, M., Groß, S., Wirth, M., and Mayer, B.: Radiative effects of long-range-transported Saharan air layers as determined from airborne lidar measurements, *Atmos. Chem. Phys.*, 20, 12313–12327, <https://doi.org/10.5194/acp-20-12313-2020>, 2020.
- Haarig, M., Ansmann, A., Althausen, D., Klepel, A., Groß, S., Freudenthaler, V., Toledano, C., Mamouri, R.-E., Farrell, D. A., Prescod, D. A., Marinou, E., Burton, S. P., Gasteiger, J., Engelmann, R., and Baars, H.: Triple-wavelength depolarization-ratio profiling of Saharan dust over Barbados during SALTRACE in 2013 and 2014, *Atmos. Chem. Phys.*, 17, 10767–10794, <https://doi.org/10.5194/acp-17-10767-2017>, 2017.
- Haarig, M., Ansmann, A., Baars, H., Jimenez, C., Veselovskii, I., Engelmann, R., and Althausen, D.: Depolarization and lidar ratios at 355, 532, and 1064 nm and microphysical properties of aged tropospheric and stratospheric Canadian wildfire smoke, *Atmos. Chem. Phys.*, 18, 11847–11861, <https://doi.org/10.5194/acp-18-11847-2018>, 2018.
- Haarig, M., Walser, A., Ansmann, A., Dollner, M., Althausen, D., Sauer, D., Farrell, D., and Weinzierl, B.: Profiles of cloud condensation nuclei, dust mass concentration, and ice-nucleating-particle-relevant aerosol properties in the Saharan Air Layer over Barbados from polarization lidar and airborne in situ measurements, *Atmos. Chem. Phys.*, 19, 13773–13788, <https://doi.org/10.5194/acp-19-13773-2019>, 2019.
- Hou, A. Y., Kakar, R. K., Neeck, S., Azarbarzin, A. A., Kummerow, C. D., Kojima, M., Oki, R., Nakamura, K., and Iguchi, T.: The Global Precipitation Measurement Mission, *B. Am. Meteorol. Soc.*, 95, 701–722, <https://doi.org/10.1175/bams-d-13-00164.1>, 2014.
- Huneus, N., Schulz, M., Balkanski, Y., Griesfeller, J., Prospero, J., Kinne, S., Bauer, S., Boucher, O., Chin, M., Dentener, F., Diehl, T., Easter, R., Fillmore, D., Ghan, S., Ginoux, P., Grini, A., Horowitz, L., Koch, D., Krol, M. C., Landing, W., Liu, X., Mahowald, N., Miller, R., Morcrette, J.-J., Myhre, G., Penner, J., Perlwitz, J., Stier, P., Takemura, T., and Zender, C. S.: Global dust model intercomparison in AeroCom phase I, *Atmos. Chem. Phys.*, 11, 7781–7816, <https://doi.org/10.5194/acp-11-7781-2011>, 2011.
- Karydis, V. A., Kumar, P., Barahona, D., Sokolik, I. N., and Nenes, A.: On the effect of dust particles on global cloud condensation nuclei and cloud droplet number, *J. Geophys. Res.-Atmos.*, 116, D23204, <https://doi.org/10.1029/2011jd016283>, 2011.
- Kiemle, C., Wirth, M., Fix, A., Ehret, G., Schumann, U., Gardiner, T., Schiller, C., Sitnikov, N., and Stiller, G.: First airborne water vapor lidar measurements in the tropical upper troposphere and mid-latitudes lower stratosphere: accuracy evaluation and intercomparisons with other instruments, *Atmos. Chem. Phys.*, 8, 5245–5261, <https://doi.org/10.5194/acp-8-5245-2008>, 2008.
- Kinne, S., Schulz, M., Textor, C., Guibert, S., Balkanski, Y., Bauer, S. E., Bernsten, T., Berglen, T. F., Boucher, O., Chin, M., Collins, W., Dentener, F., Diehl, T., Easter, R., Feichter, J., Fillmore, D., Ghan, S., Ginoux, P., Gong, S., Grini, A., Hendricks, J., Herzog, M., Horowitz, L., Isaksen, I., Iversen, T., Kirkevåg, A., Kloster, S., Koch, D., Kristjansson, J. E., Krol, M., Lauer, A., Lamarque, J. F., Lesins, G., Liu, X., Lohmann, U., Montanaro, V., Myhre, G., Penner, J., Pitari, G., Reddy, S., Seland, O., Stier, P., Takemura, T., and Tie, X.: An AeroCom initial assessment – optical properties in aerosol component modules of global models, *Atmos. Chem. Phys.*, 6, 1815–1834, <https://doi.org/10.5194/acp-6-1815-2006>, 2006.
- Konow, H., Ewald, F., George, G., Jacob, M., Klingebiel, M., Kölling, T., Luebke, A. E., Mieslinger, T., Pörtge, V., Radtke, J., Schäfer, M., Schulz, H., Vogel, R., Wirth, M., Bony, S., Crewell, S., Ehrlich, A., Forster, L., Giez, A., Göttsche, F., Groß, S., Gutleben, M., Hagen, M., Hirsch, L., Jansen, F., Lang, T., Mayer, B., Mech, M., Prange, M., Schnitt, S., Vial, J., Walbröl, A., Wendisch, M., Wolf, K., Zinner, T., Zöger, M., Ament, F., and Stevens, B.: EUREC⁴A's HALO, *Earth Syst. Sci. Data*, 13, 5545–5563, <https://doi.org/10.5194/essd-13-5545-2021>, 2021.
- Krautstrunk, M. and Giez, A.: The transition from FALCON to HALO era airborne atmospheric research, in: *Atmospheric Physics*, edited by: Schumann, U., *Research Topics in Aerospace*, 609–624, Springer Berlin Heidelberg, ISBN 978-3-642-30182-7, 2012.
- Mahnke, P., Klingenberg, H., Fix, A., and Wirth, M.: Dependency of injection seeding and spectral purity of a single resonant KTP optical parametric oscillator on the phase matching condition, *Appl. Phys. B*, 89, 1–7, <https://doi.org/10.1007/s00340-007-2746-z>, 2007.
- Messenger, C., Parker, D. J., Reitebuch, O., Agusti-Panareda, A., Taylor, C. M., and Cuesta, J.: Structure and dynamics of the Saharan atmospheric boundary layer during the West African monsoon onset: observations and analyses from the research flights of 14 and 17 July 2006, *Q. J. R. Meteorol. Soc.*, 136, 107–124, <https://doi.org/10.1002/qj.469>, 2009.
- Prospero, J. M. and Carlson, T. N.: Vertical and areal distribution of Saharan dust over the western equatorial North Atlantic Ocean, *J. Geophys. Res.*, 77, 5255–5265, <https://doi.org/10.1029/JC077i027p05255>, 1972.
- Prospero, J. M., Landing, W. M., and Schulz, M.: African dust deposition to Florida: Temporal and spatial variability and comparisons to models, *J. Geophys. Res.*, 115, D13304, <https://doi.org/10.1029/2009jd012773>, 2010.
- Rittmeister, F., Ansmann, A., Engelmann, R., Skupin, A., Baars, H., Kanitz, T., and Kinne, S.: Profiling of Saharan dust from the Caribbean to western Africa – Part I: Layering structures and optical properties from shipborne polarization/Raman lidar observations, *Atmos. Chem. Phys.*, 17, 12963–12983, <https://doi.org/10.5194/acp-17-12963-2017>, 2017.
- Ryder, C. L.: Radiative Effects of Increased Water Vapor in the Upper Saharan Air Layer Associated With Enhanced Dustiness, *J. Geophys. Res.-Atmos.*, 126, 2021JD034696, <https://doi.org/10.1029/2021jd034696>, 2021.
- Schepanski, K., Tegen, I., and Macke, A.: Saharan dust transport and deposition towards the tropical northern Atlantic, *Atmos. Chem. Phys.*, 9, 1173–1189, <https://doi.org/10.5194/acp-9-1173-2009>, 2009.

- Shao, Y., Wyrwoll, K.-H., Chappell, A., Huang, J., Lin, Z., McTainsh, G. H., Mikami, M., Tanaka, T. Y., Wang, X., and Yoon, S.: Dust cycle: an emerging core theme in Earth system science, *Aeolian Res.*, 2, 181–204, <https://doi.org/10.1016/j.aeolia.2011.02.001>, 2011.
- Stein, A. F., Draxler, R. R., Rolph, G. D., Stunder, B. J. B., Cohen, M. D., and Ngan, F.: NOAA's HYSPLIT atmospheric transport and dispersion modeling system, *B. Am. Meteorol. Soc.*, 96, 2059–2077, <https://doi.org/10.1175/BAMS-D-14-00110.1>, 2015.
- Stevens, B., Ament, F., Bony, S., Crewell, S., Ewald, F., Groß, S., Hansen, A., Hirsch, L., Jacob, M., Kölling, T., Konow, H., Mayer, B., Wendisch, M., Wirth, M., Wolf, K., Bakan, S., Bauer-Pfundstein, M., Brueck, M., Delanoë, J., Ehrlich, A., Farrell, D., Forde, M., Gödde, F., Grob, H., Hagen, M., Jäkel, E., Jansen, F., Klepp, C., Klingebiel, M., Mech, M., Peters, G., Rapp, M., Wing, A. A., and Zinner, T.: A high-altitude long-range aircraft configured as a cloud observatory – the NARVAL expeditions, *B. Am. Meteorol. Soc.*, 100, 1061–1077, <https://doi.org/10.1175/bams-d-18-0198.1>, 2019.
- Stevens, B., Bony, S., Farrell, D., Ament, F., Blyth, A., Fairall, C., Karstensen, J., Quinn, P. K., Speich, S., Acquistapace, C., Aemisegger, F., Albright, A. L., Bellenger, H., Bodenschatz, E., Caesar, K.-A., Chewitt-Lucas, R., de Boer, G., Delanoë, J., Denby, L., Ewald, F., Fildier, B., Forde, M., George, G., Gross, S., Hagen, M., Hausold, A., Heywood, K. J., Hirsch, L., Jacob, M., Jansen, F., Kinne, S., Klocke, D., Kölling, T., Konow, H., Lothorn, M., Mohr, W., Naumann, A. K., Nuijens, L., Olivier, L., Pincus, R., Pöhlker, M., Reverdin, G., Roberts, G., Schnitt, S., Schulz, H., Siebesma, A. P., Stephan, C. C., Sullivan, P., Touzé-Peiffer, L., Vial, J., Vogel, R., Zuidema, P., Alexander, N., Alves, L., Arixi, S., Asmath, H., Bagheri, G., Baier, K., Bailey, A., Baranowski, D., Baron, A., Barrau, S., Barrett, P. A., Batier, F., Behrendt, A., Bendinger, A., Beucher, F., Bigorre, S., Blades, E., Blosssey, P., Bock, O., Böing, S., Bossler, P., Bourras, D., Bouruet-Aubertot, P., Bower, K., Branell, P., Branger, H., Brennek, M., Brewer, A., Brilouet, P.-E., Brüggemann, B., Buehler, S. A., Burke, E., Burton, R., Calmer, R., Canonici, J.-C., Carton, X., Cato Jr., G., Charles, J. A., Chazette, P., Chen, Y., Chilinski, M. T., Choularton, T., Chuang, P., Clarke, S., Coe, H., Cornet, C., Coutris, P., Couvreux, F., Crewell, S., Cronin, T., Cui, Z., Cuypers, Y., Daley, A., Damerell, G. M., Dauhut, T., Deneke, H., Desbios, J.-P., Dörner, S., Donner, S., Douet, V., Drushka, K., Dütsch, M., Ehrlich, A., Emanuel, K., Emmanouilidis, A., Etienne, J.-C., Etienne-Leblanc, S., Faure, G., Feingold, G., Ferrero, L., Fix, A., Flamant, C., Flatau, P. J., Foltz, G. R., Forster, L., Furtuna, I., Gadian, A., Galewsky, J., Gallagher, M., Gallimore, P., Gaston, C., Gentemann, C., Geyskens, N., Giez, A., Gollop, J., Gouirand, I., Gourbeyre, C., de Graaf, D., de Groot, G. E., Grosz, R., Güttler, J., Gutleben, M., Hall, K., Harris, G., Helfer, K. C., Henze, D., Herbert, C., Holanda, B., Ibanez-Landeta, A., Intrieri, J., Iyer, S., Julien, F., Kalasse, H., Kazil, J., Kellman, A., Kidane, A. T., Kirchner, U., Klingebiel, M., Körner, M., Krempner, L. A., Kretzschmar, J., Krüger, O., Kumala, W., Kurz, A., L'Hégaret, P., Labaste, M., Lachlan-Cope, T., Laing, A., Landschützer, P., Lang, T., Lange, D., Lange, I., Laplace, C., Lavik, G., Laxenaire, R., Le Bihan, C., Leandro, M., Lefevre, N., Lena, M., Lenschow, D., Li, Q., Lloyd, G., Los, S., Losi, N., Lovell, O., Luneau, C., Makuch, P., Malinowski, S., Manta, G., Marinou, E., Marsden, N., Masson, S., Maury, N., Mayer, B., Mayers-Als, M., Mazel, C., McGeary, W., McWilliams, J. C., Mech, M., Mehlmann, M., Meroni, A. N., Mieslinger, T., Minikin, A., Minnett, P., Möller, G., Morfa Avalos, Y., Muller, C., Musat, I., Napoli, A., Neuberger, A., Noisel, C., Noone, D., Nordsiek, F., Nowak, J. L., Oswald, L., Parker, D. J., Peck, C., Person, R., Philippi, M., Plueddemann, A., Pöhlker, C., Pörtge, V., Pöschl, U., Pologne, L., Posyniak, M., Prange, M., Quiñones Meléndez, E., Radtke, J., Ramage, K., Reimann, J., Renault, L., Reus, K., Reyes, A., Ribbe, J., Ringel, M., Ritschel, M., Rocha, C. B., Rochetin, N., Röttenbacher, J., Rollo, C., Royer, H., Sadoulet, P., Saffin, L., Sandiford, S., Sandu, I., Schäfer, M., Schemann, V., Schirmacher, I., Schlenczek, O., Schmidt, J., Schröder, M., Schwarzenboeck, A., Sealy, A., Senff, C. J., Serikov, I., Shohan, S., Siddle, E., Smirnov, A., Späth, F., Spooner, B., Stolla, M. K., Szkółka, W., de Szoek, S. P., Tarot, S., Tetoni, E., Thompson, E., Thomson, J., Tomassini, L., Totems, J., Ubele, A. A., Villiger, L., von Arx, J., Wagner, T., Walther, A., Webber, B., Wendisch, M., Whitehall, S., Wiltshire, A., Wing, A. A., Wirth, M., Wiskandt, J., Wolf, K., Worbes, L., Wright, E., Wulfmeyer, V., Young, S., Zhang, C., Zhang, D., Ziemann, F., Zinner, T., and Zöger, M.: EUREC⁴A, *Earth Sys. Sci. Data*, 13, 4067–4119, <https://doi.org/10.5194/essd-13-4067-2021>, 2021.
- Tegen, I., Hollrig, P., Chin, M., Fung, I., Jacob, D., and Penner, J.: Contribution of different aerosol species to the global aerosol extinction optical thickness: estimates from model results, *J. Geophys. Res.-Atmos.*, 102, 23895–23915, <https://doi.org/10.1029/97jd01864>, 1997.
- Tesche, M., Ansmann, A., Müller, D., Althausen, D., Engelmann, R., Freudenthaler, V., and Groß, S.: Vertically resolved separation of dust and smoke over Cape Verde using multiwavelength Raman and polarization lidars during Saharan Mineral Dust Experiment 2008, *J. Geophys. Res.*, 114, D13202, <https://doi.org/10.1029/2009jd011862>, 2009.
- Tesche, M., Gross, S., Ansmann, A., Müller, D., Althausen, D., Freudenthaler, V., and Esselborn, M.: Profiling of Saharan dust and biomass-burning smoke with multiwavelength polarization Raman lidar at Cape Verde, *Tellus B*, 63, 649–676, <https://doi.org/10.1111/j.1600-0889.2011.00548.x>, 2011.
- Tsamalis, C., Chédin, A., Pelon, J., and Capelle, V.: The seasonal vertical distribution of the Saharan Air Layer and its modulation by the wind, *Atmos. Chem. Phys.*, 13, 11235–11257, <https://doi.org/10.5194/acp-13-11235-2013>, 2013.
- Vaisala: Dropsonde RD41, Tech. Rep., Vaisala, <https://www.vaisala.com/sites/default/files/documents/RD41-Datasheet-B211706EN.pdf> (last access: 30 May 2022), 2020.
- Weinzierl, B., Ansmann, A., Prospero, J. M., Althausen, D., Benker, N., Chouza, F., Dollner, M., Farrell, D., Fomba, W. K., Freudenthaler, V., Gasteiger, J., Groß, S., Haarig, M., Heinold, B., Kandler, K., Kristensen, T. B., Mayol-Bracero, O. L., Müller, T., Reitebuch, O., Sauer, D., Schäfer, A., Schepanski, K., Spanu, A., Tegen, I., Toledano, C., and Walsch, A.: The Saharan Aerosol Long-Range Transport and Aerosol-Cloud-Interaction Experiment: overview and selected highlights, *B. Am. Meteorol. Soc.*, 98, 1427–1451, <https://doi.org/10.1175/BAMS-D-15-00142.1>, 2017.

- Wirth, M., Fix, A., Mahnke, P., Schwarzer, H., Schrandt, F., and Ehret, G.: The airborne multi-wavelength water vapor differential absorption lidar WALES: system design and performance, *Appl. Phys. B*, 96, 201–213, <https://doi.org/10.1007/s00340-009-3365-7>, 2009.
- Yu, H., Chin, M., Yuan, T., Bian, H., Remer, L. A., Prospero, J. M., Omar, A., Winker, D., Yang, Y., Zhang, Y., Zhang, Z., and Zhao, C.: The fertilizing role of African dust in the Amazon rainforest: A first multiyear assessment based on data from Cloud-Aerosol Lidar and Infrared Pathfinder Satellite Observations, *Geophys. Res. Lett.*, 42, 1984–1991, <https://doi.org/10.1002/2015gl063040>, 2015.